

V&V Reference Report

L2 ASCDS Version : 8.4.3

Observation 7322 - L2 Version 2
Chandra X-Ray Center

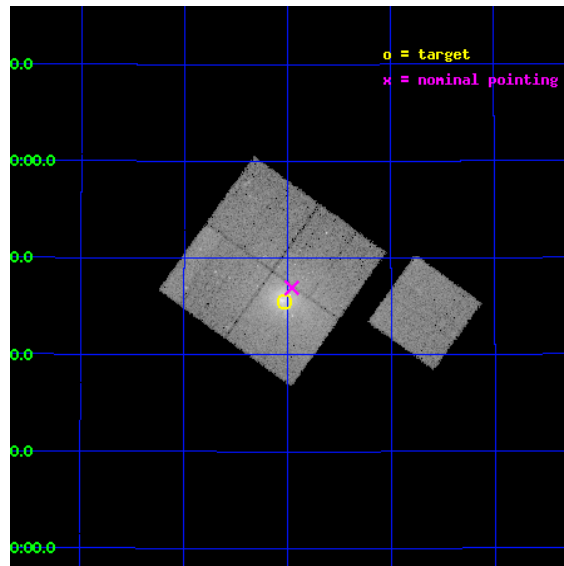
L2 Processing Date : Mar 30 2012

Contents

1	Front	2
2	OBI	3
2.1	OBI	3
2.1.1	Images	3
2.1.2	Bias	3
2.1.3	Parameters	4
2.1.4	Events	4
2.2	Compared Parameters	5
2.3	Aspect	6
2.4	Star Slots	9
2.4.1	Slot 3	9
2.4.2	Slot 4	10
2.4.3	Slot 5	11
2.4.4	Slot 6	12
2.4.5	Slot 7	13
2.5	FID Slots	14
2.5.1	Slot 0	14
2.5.2	Slot 1	15
2.5.3	Slot 2	16
A	Summary	17
A.1	Status	17
A.2	Comments	17

1 Front

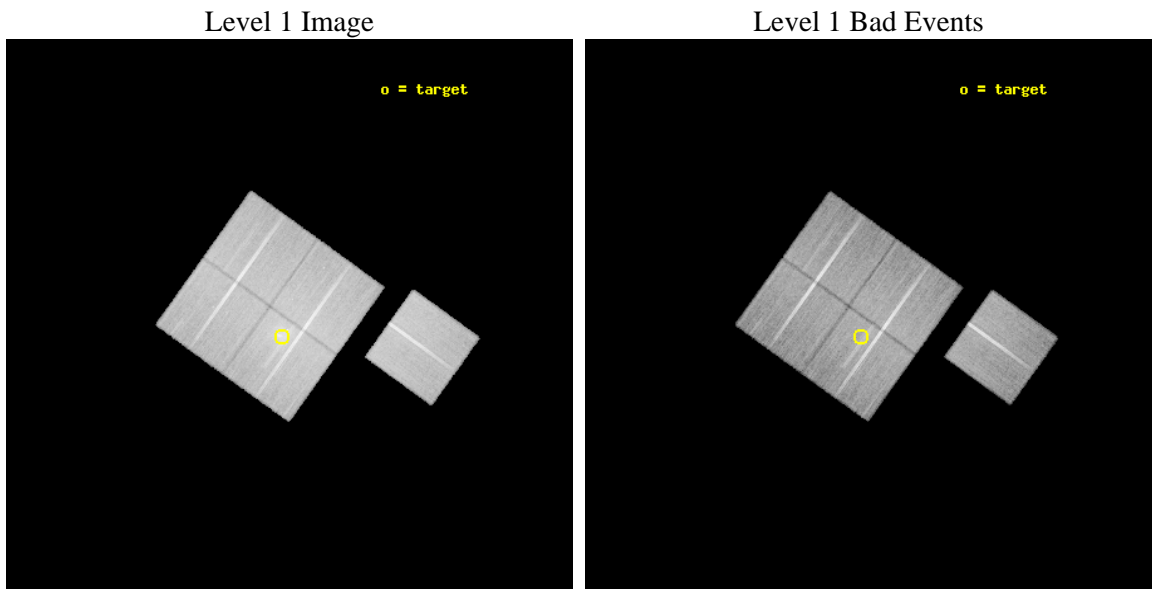
seq_num	800582	Sequence number
obs_id	7322	Observation id
title	Chronicling the Activity of a Supermassive Black Hole	Proposal tit
observer	Dr. william forman	Principal investigator
object	IC1262	Source name
dtcycle	0	
cycle	P	events from which exps? Prim/Second/Both
ra_targ	263.259167	Observer's specified target RA [deg]
dec_targ	43.75925	Observer's specified target Dec [deg]
ra_nom	263.23967119322	Nominal RA [deg]
dec_nom	43.782100399492	Nominal Dec [deg]
roll_nom	125.68631172279	Nominal Roll [deg]
revision	2	Processing version of data
ontime	38039.847858399	Sum of GTIs [s]
livetime	37542.829241601	Livetime [s]
ontime0	38039.724698544	Sum of GTIs [s]
ontime1	38042.906728745	Sum of GTIs [s]
ontime2	38039.806808412	Sum of GTIs [s]
ontime3	38039.847858399	Sum of GTIs [s]
ontime6	38045.96564889	Sum of GTIs [s]
l2events	163407	Number of level 2 events



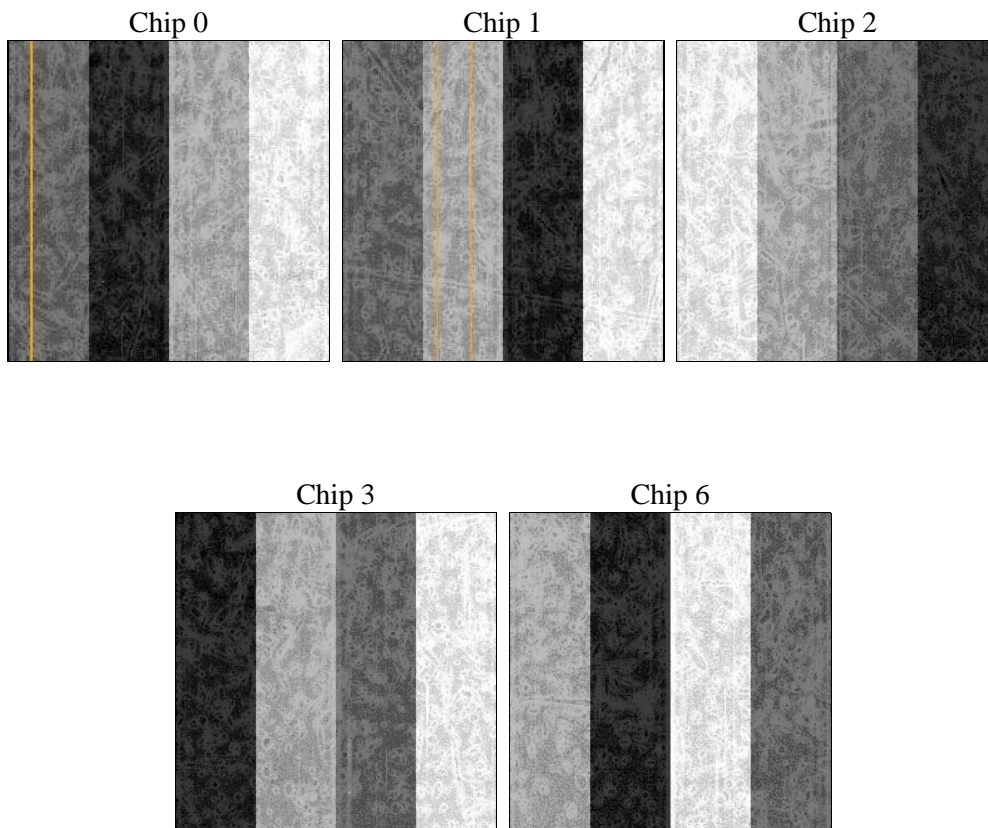
2 OBI

2.1 OBI

2.1.1 Images



2.1.2 Bias



2.1.3 Parameters

obi_num	0	Obi number	sched_exp_time	38000.000000	[s] Scheduled observation exposure time
ascdsver	8.4.3	Processing system revision	ontime	38039.847858399	Sum of GTIs [s]
caldbver	4.4.8	 	ontime0	38039.724698544	Sum of GTIs [s]
date	2012-03-30T19:13:25	Date and time of file creation	ontime1	38042.906728745	Sum of GTIs [s]
revision	2	Processing version of data	ontime2	38039.806808412	Sum of GTIs [s]
			ontime3	38039.847858399	Sum of GTIs [s]
			ontime6	38045.96564889	Sum of GTIs [s]
			l1events	1450914	Number of level 1 events

2.1.4 Events

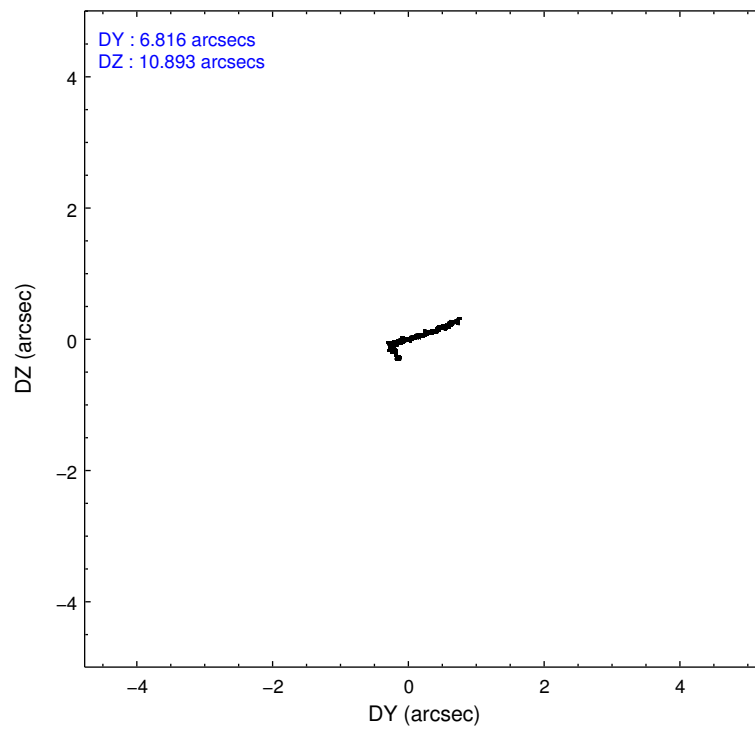
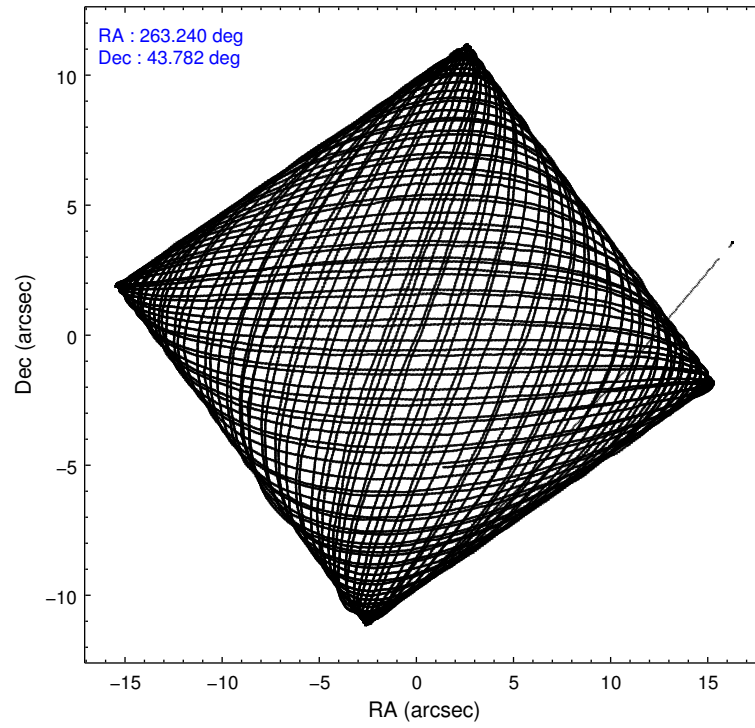
	ccd 0	ccd 1	ccd 2	ccd 3	ccd 6
level 1 events	269048	271163	303368	324390	282945
rejected events	239863	236169	268434	262124	254422
rejected %	89%	87%	88%	80%	89%

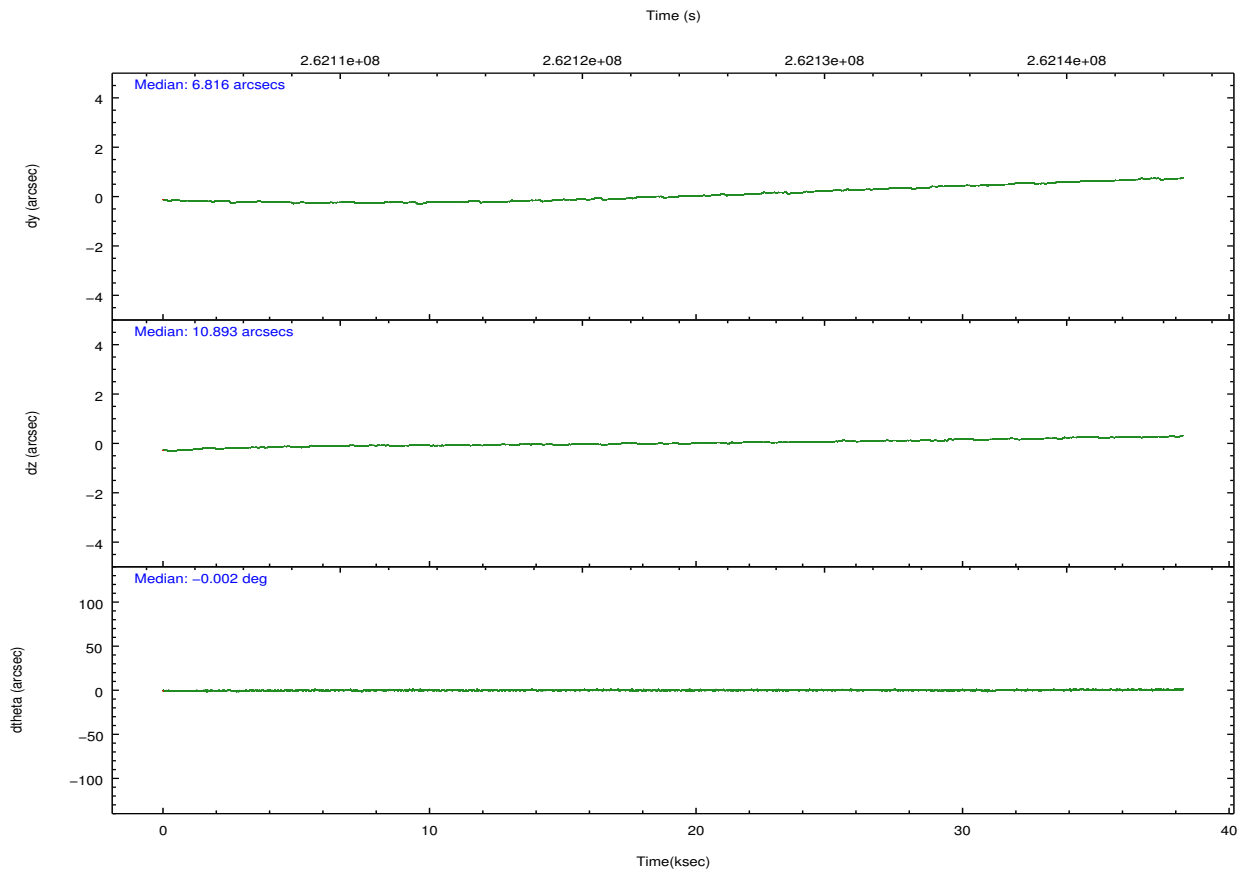
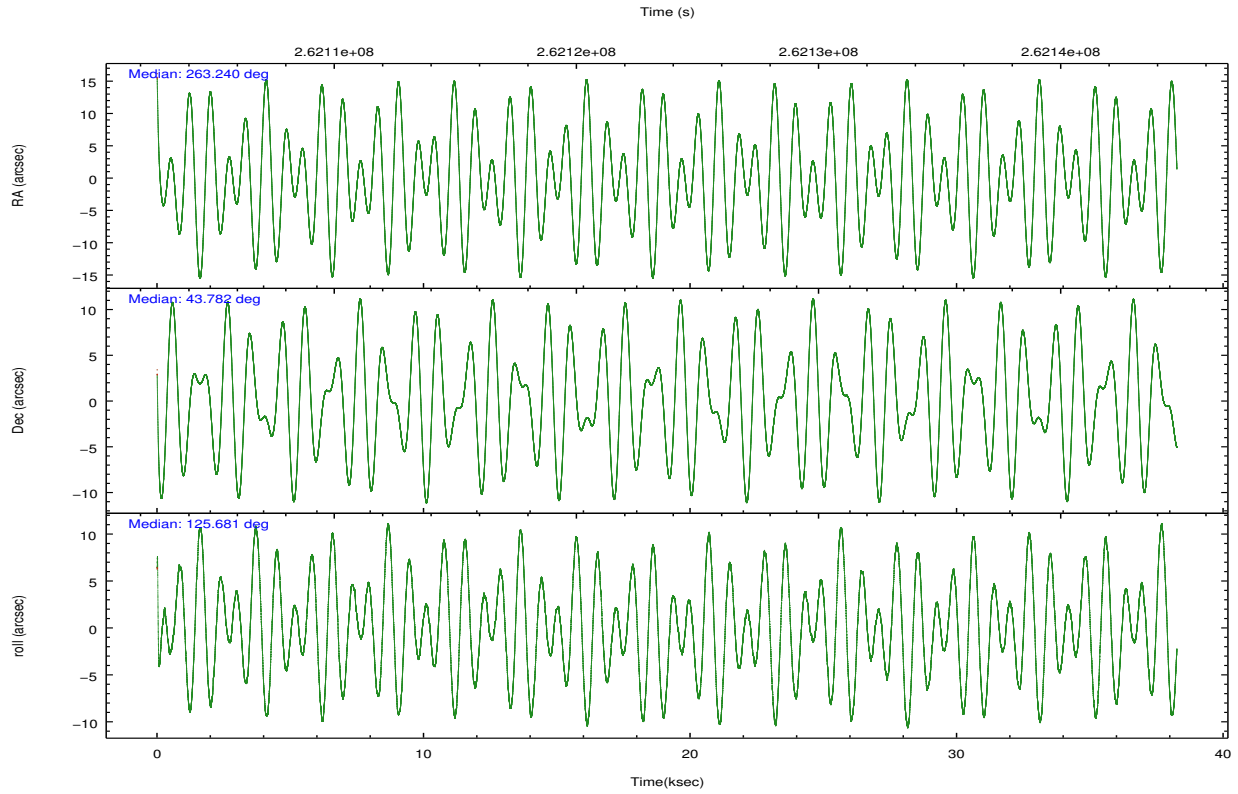
	ccd 0	ccd 1	ccd 2	ccd 3	ccd 6
grade 0 events	10910	14668	16113	39927	10070
	4%	5%	5%	12%	3%
grade 1 events	154	137	211	335	130
	0%	0%	0%	0%	0%
grade 2 events	6746	7152	7295	8777	6183
	2%	2%	2%	2%	2%
grade 3 events	3234	3444	3094	3879	3204
	1%	1%	1%	1%	1%
grade 4 events	2975	3507	3192	3897	3212
	1%	1%	1%	1%	1%
grade 5 events	9252	10633	8917	11328	10930
	3%	3%	2%	3%	3%
grade 6 events	5321	6226	5241	5789	5856
	1%	2%	1%	1%	2%
grade 7 events	230456	225396	259305	250458	243360
	85%	83%	85%	77%	86%

2.2 Compared Parameters

Parameter	Planned	Actual	Parameter	Planned	Actual
Instrument	ACIS	ACIS	Obspar format version number	7	7
Detector	ACIS-01236	ACIS-01236	Obspar file type	PREDICTED	ACTUAL
Grating	NONE	NONE	Obspar update status	NONE	UPDATED
Data mode	VFAINT	VFAINT	Number of optional ACIS chips dropped	0	0
Observation mode	POINTING	POINTING	On-chip summing requested	N	N
[deg] Pointing RA	263.274289	263.2396711932214	Subarray requested	NONE	NONE
[deg] Pointing Dec	43.770912	43.7821003994916	Alternating exposures requested	N	N
[deg] Pointing Roll	125.453665	125.6863117227947	[s] Primary exposure time	0.000000	3.1
[mm] SIM focus pos	-0.782348	-0.7809083437167272			
[mm] SIM defocus	0	0.001439871863259334			
[mm] SIM translation stage pos	-227.592463	-227.5933067819097			
[mm] SIM translation stage offset	-6	-5.999146221020027			
[s] Observation start time (MET)	262104876.184000	262103908.95155			
Observation start date	2006-04-22T14:53:31	2006-04-22T14:38:28			
[s] Observation end time (MET)	262142876.184000	262143583.1159			
Observation end date	2006-04-23T01:26:51	2006-04-23T01:39:43			
Read mode	TIMED	TIMED			

2.3 Aspect





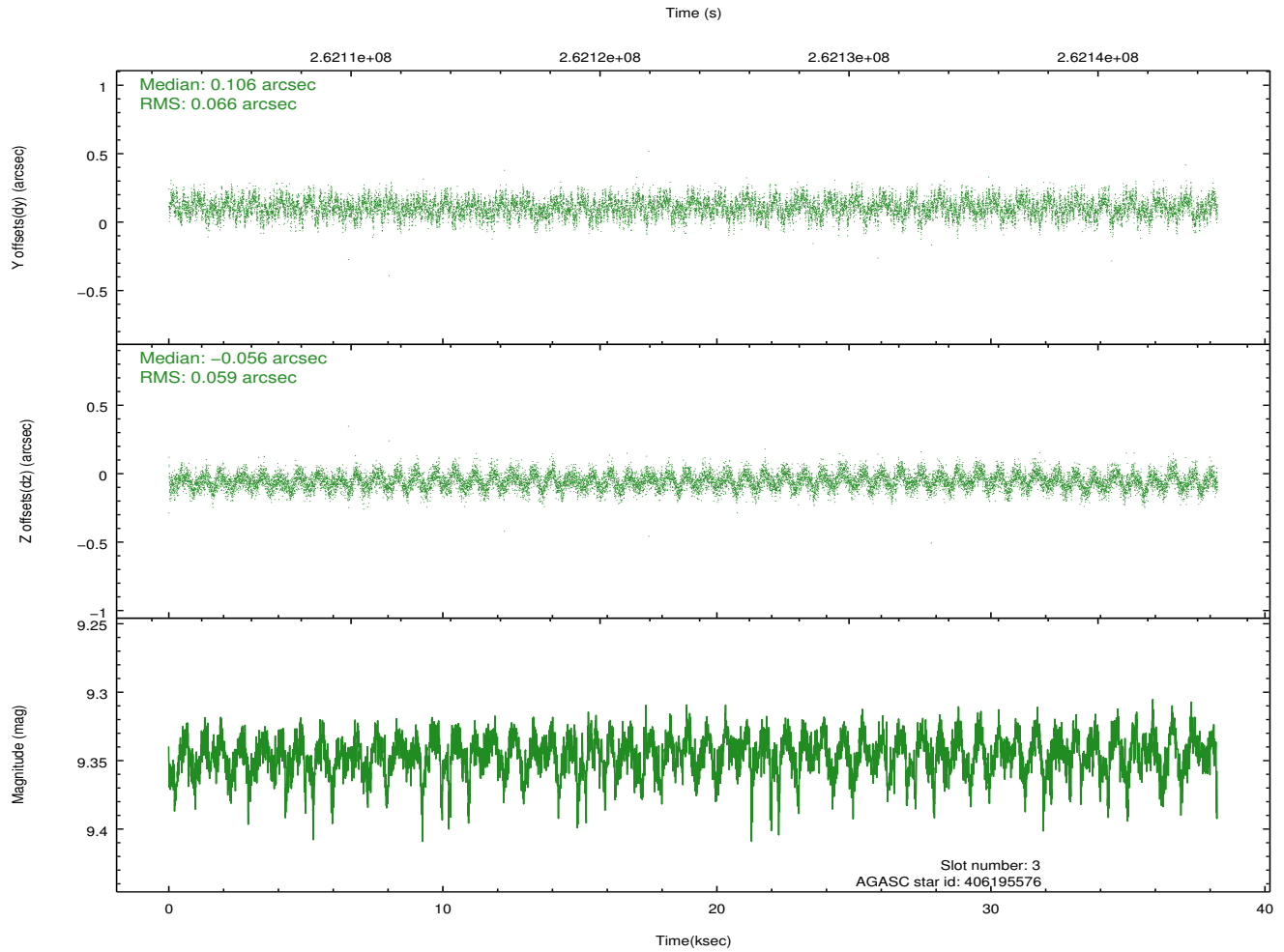
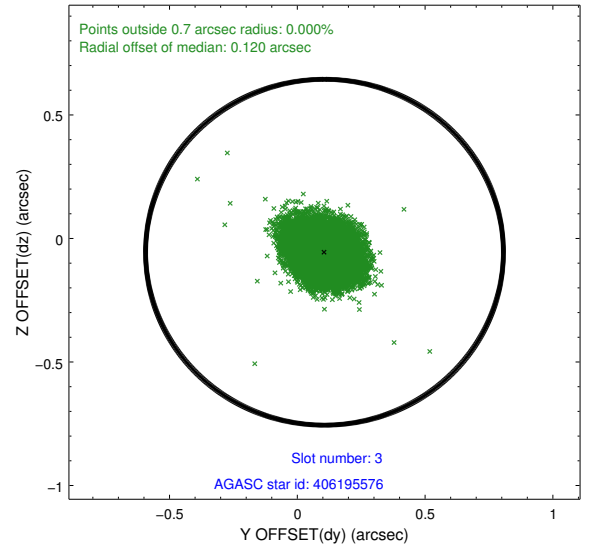
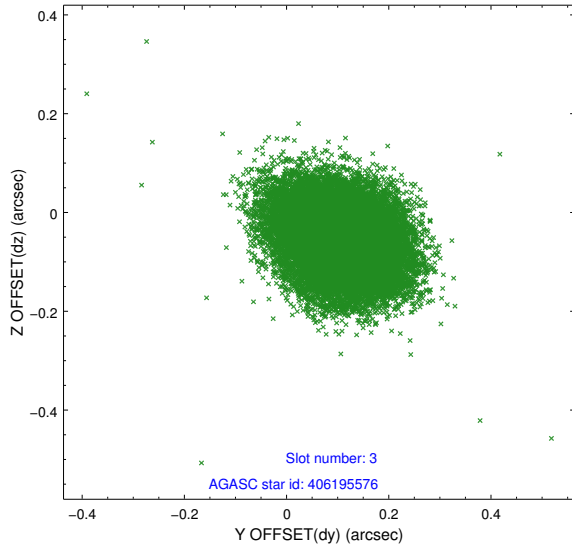
Slot Statistics

slot	status	id	mag	n_pts	med_dy	med_dz	dr1	dr2	ra	dec	mean_y	mean_z
0	FID	ACIS-I-1	7.24	9332	0.086	-0.075	0.008	0.016	0.000000	0.000000	932.75	-957.61
1	FID	ACIS-I-5	7.23	9331	-0.239	0.074	0.007	0.013	0.000000	0.000000	-1815.68	939.99
2	FID	ACIS-I-6	7.25	9332	0.061	0.072	0.008	0.014	0.000000	0.000000	398.23	1584.53
3	GUIDE	406195576	9.35	18657	0.106	-0.056	0.094	0.150	263.106818	43.225469	-1344.28	1496.83
4	GUIDE	406203280	8.03	18660	-0.127	-0.052	0.071	0.110	262.805189	43.558767	90.47	1438.21
5	GUIDE	406204296	7.22	18659	-0.007	0.074	0.054	0.083	263.626842	43.500898	-1324.00	-186.85
6	GUIDE	406205248	7.02	18665	0.022	0.115	0.063	0.096	263.672548	43.397249	-1698.32	-69.56
7	GUIDE	406206640	7.48	18662	0.006	-0.081	0.060	0.099	264.514318	43.598903	-2359.82	-2288.27

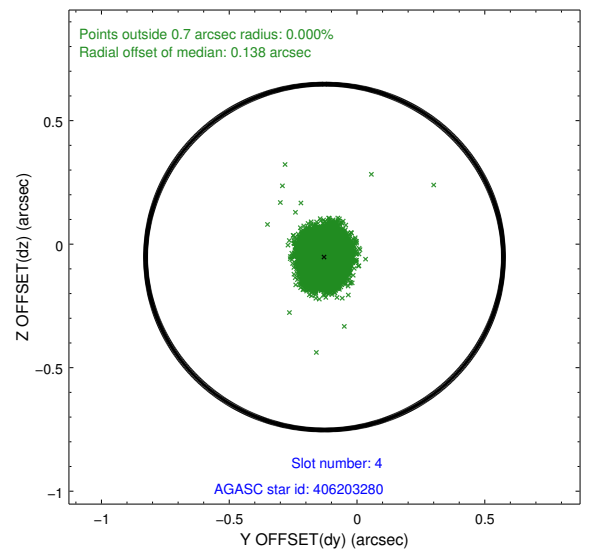
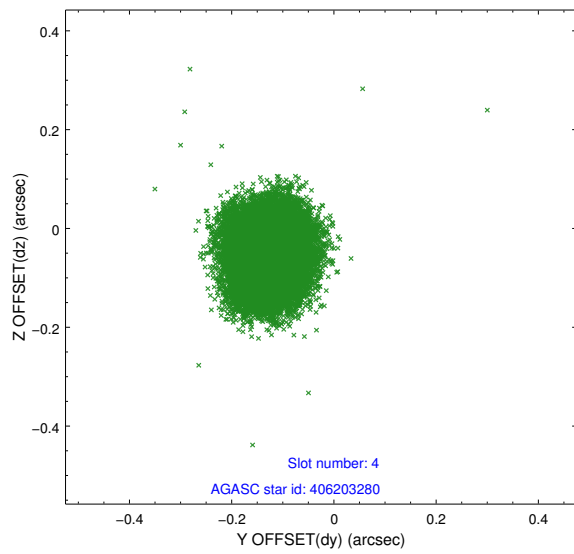
∞

2.4 Star Slots

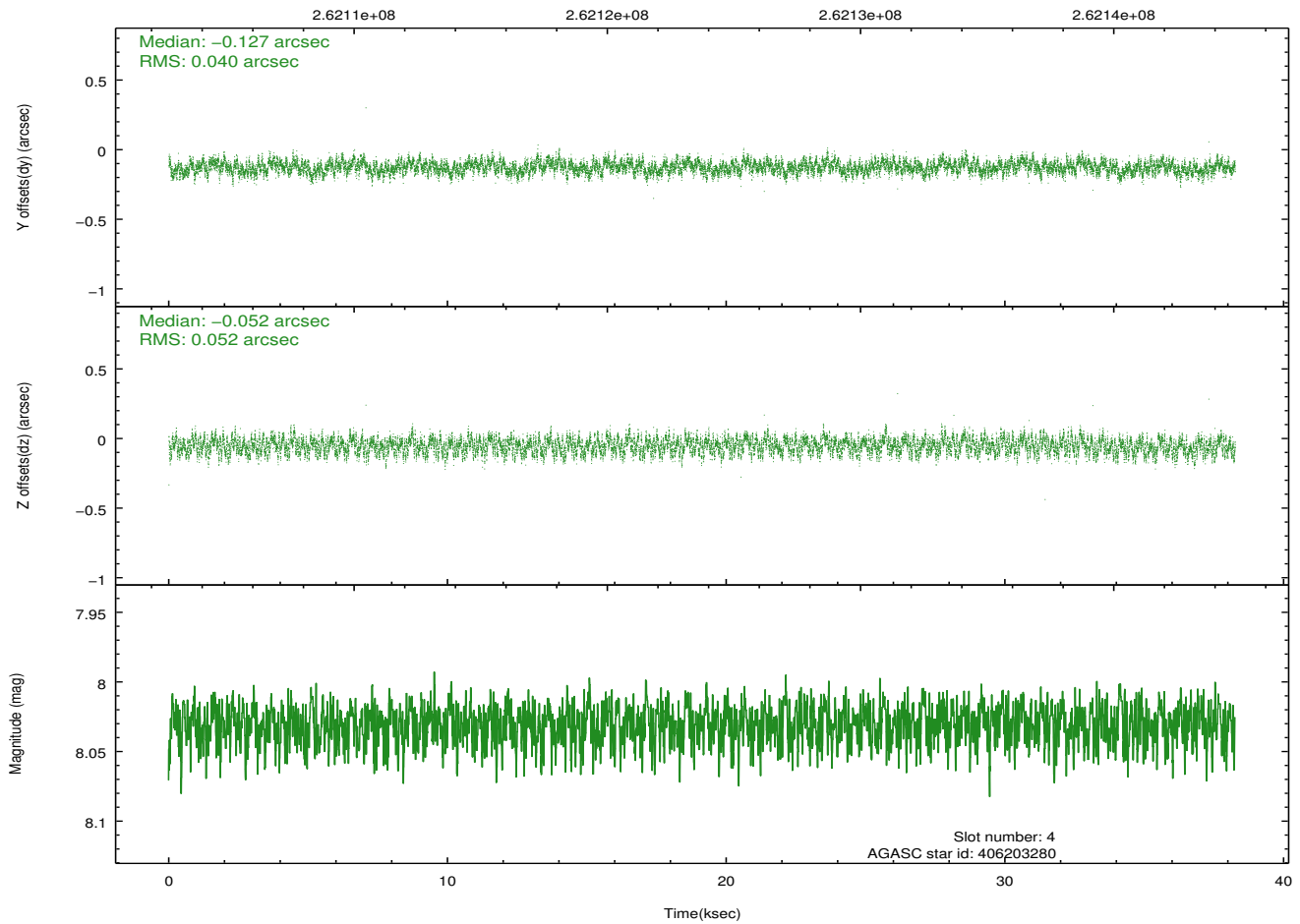
2.4.1 Slot 3



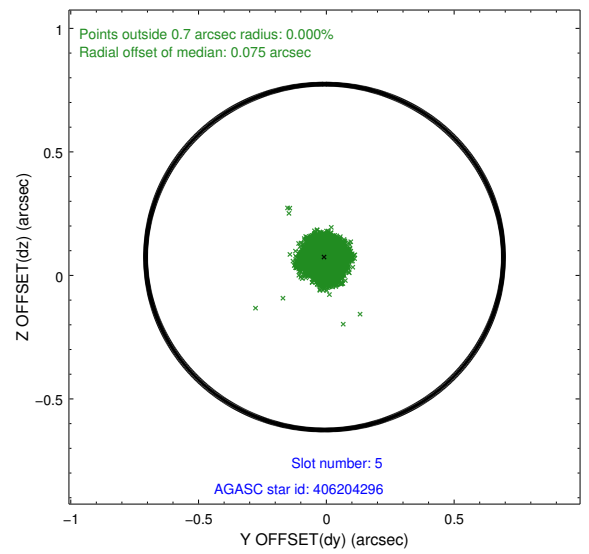
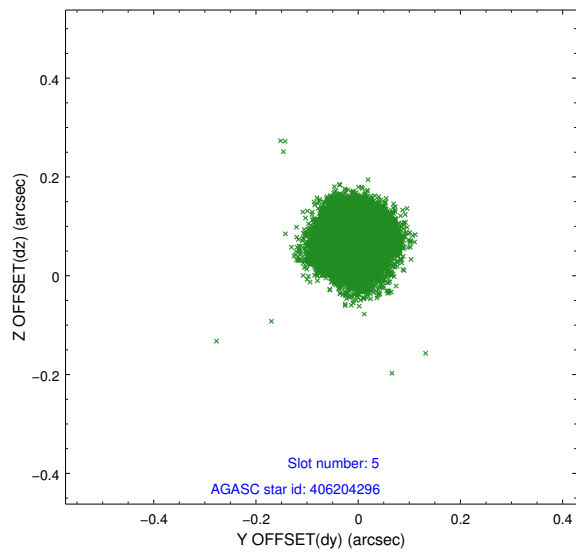
2.4.2 Slot 4



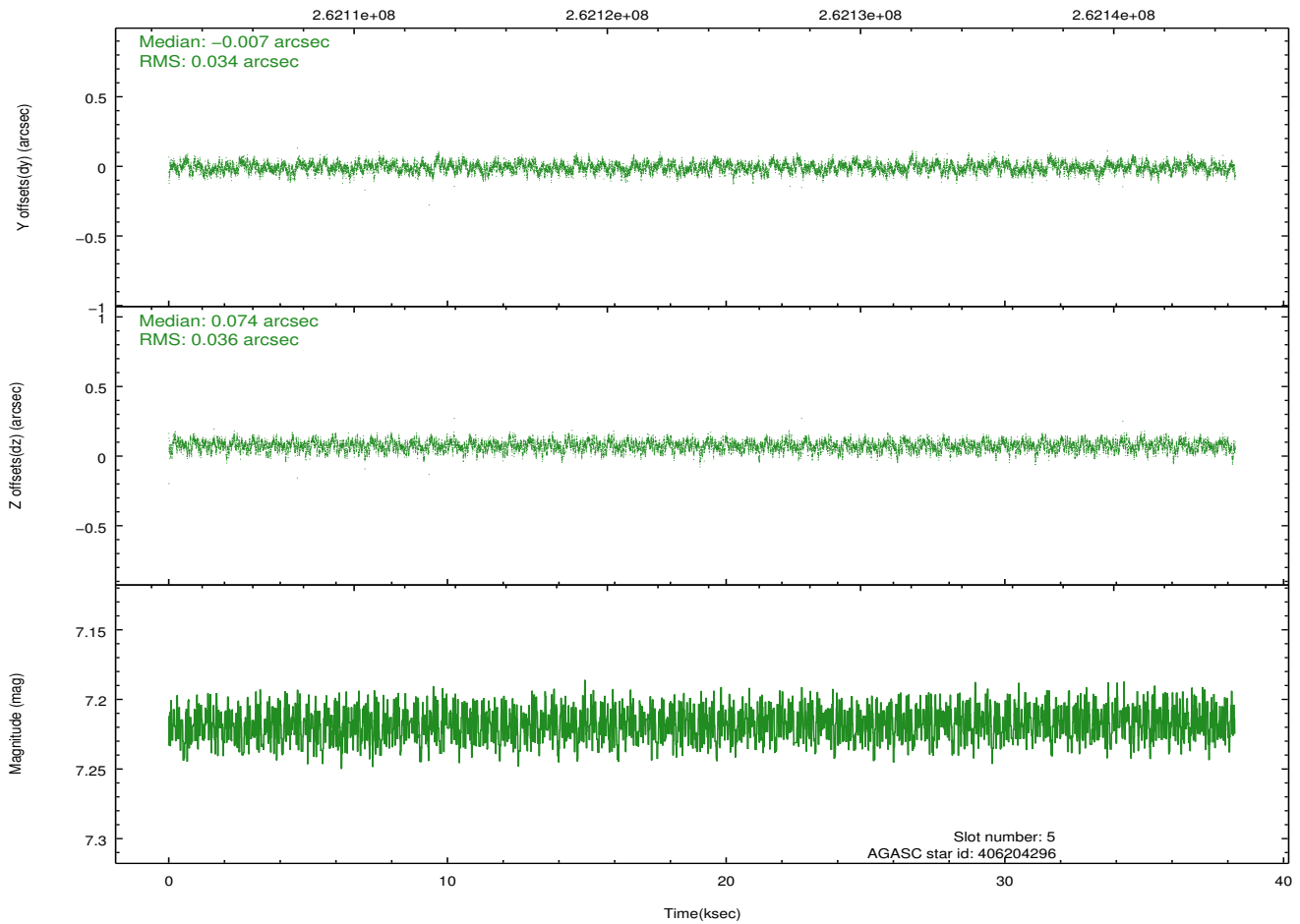
Time (s)



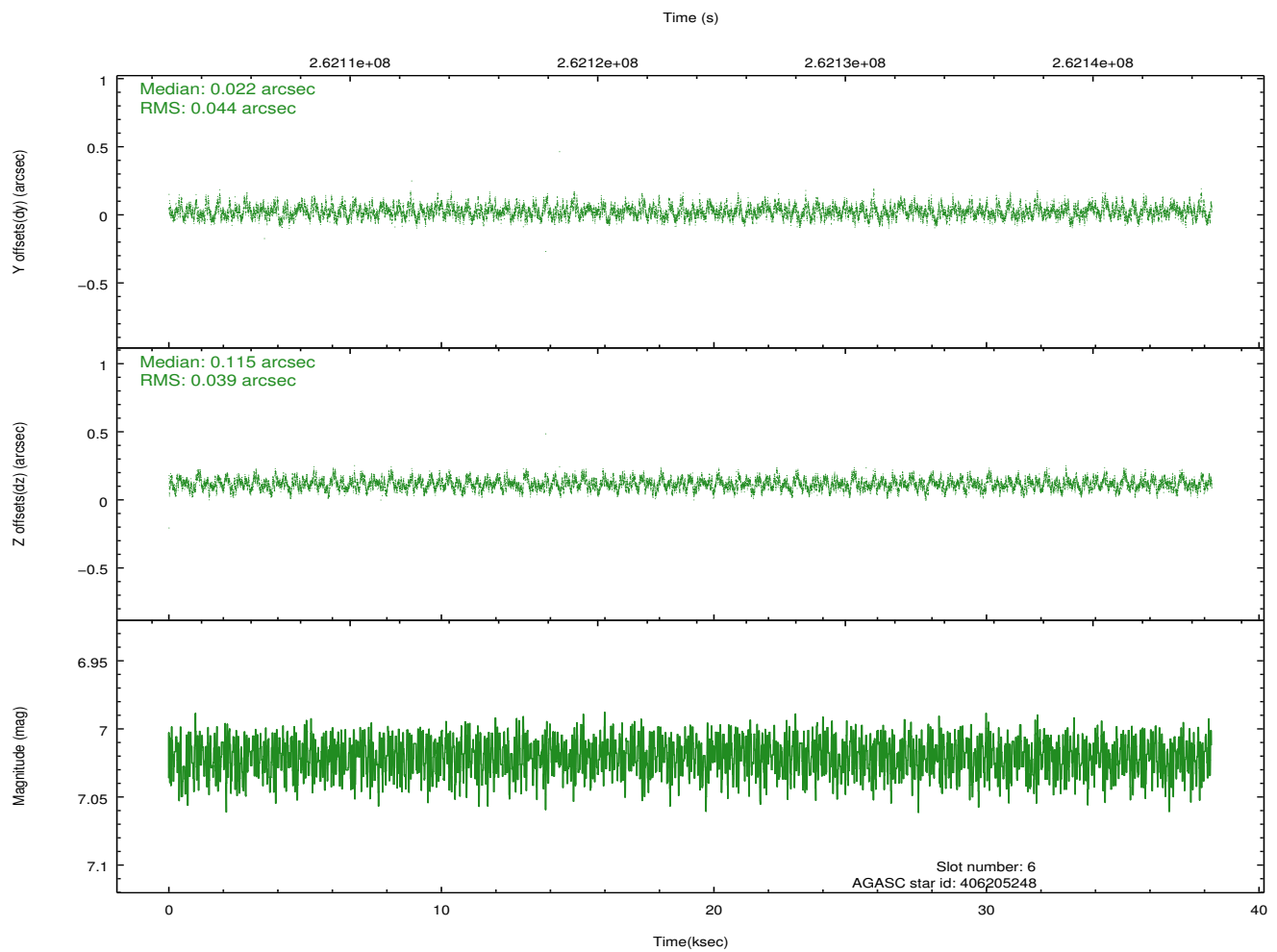
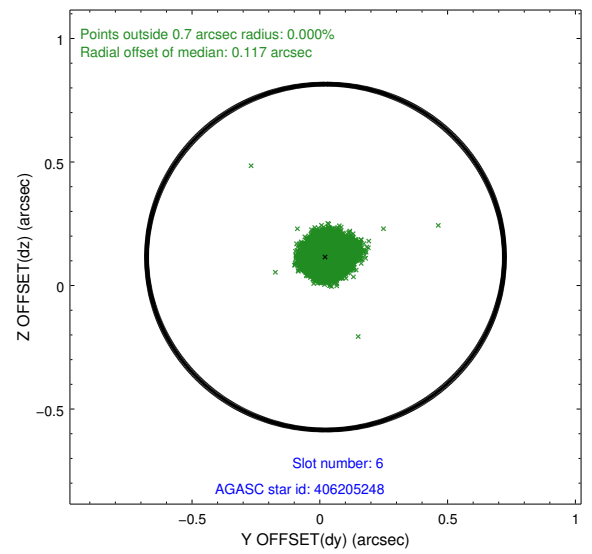
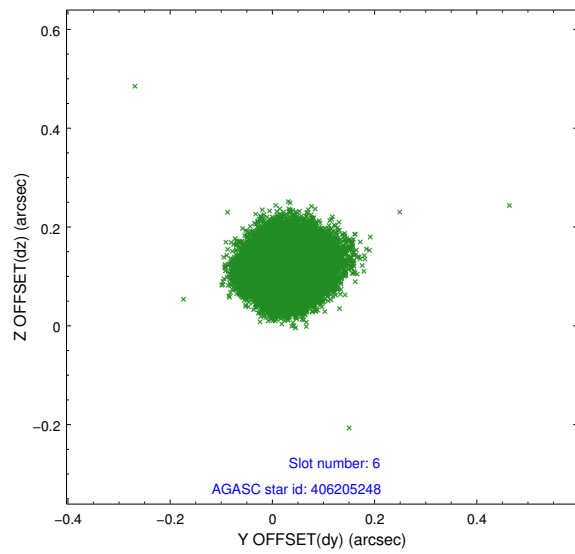
2.4.3 Slot 5



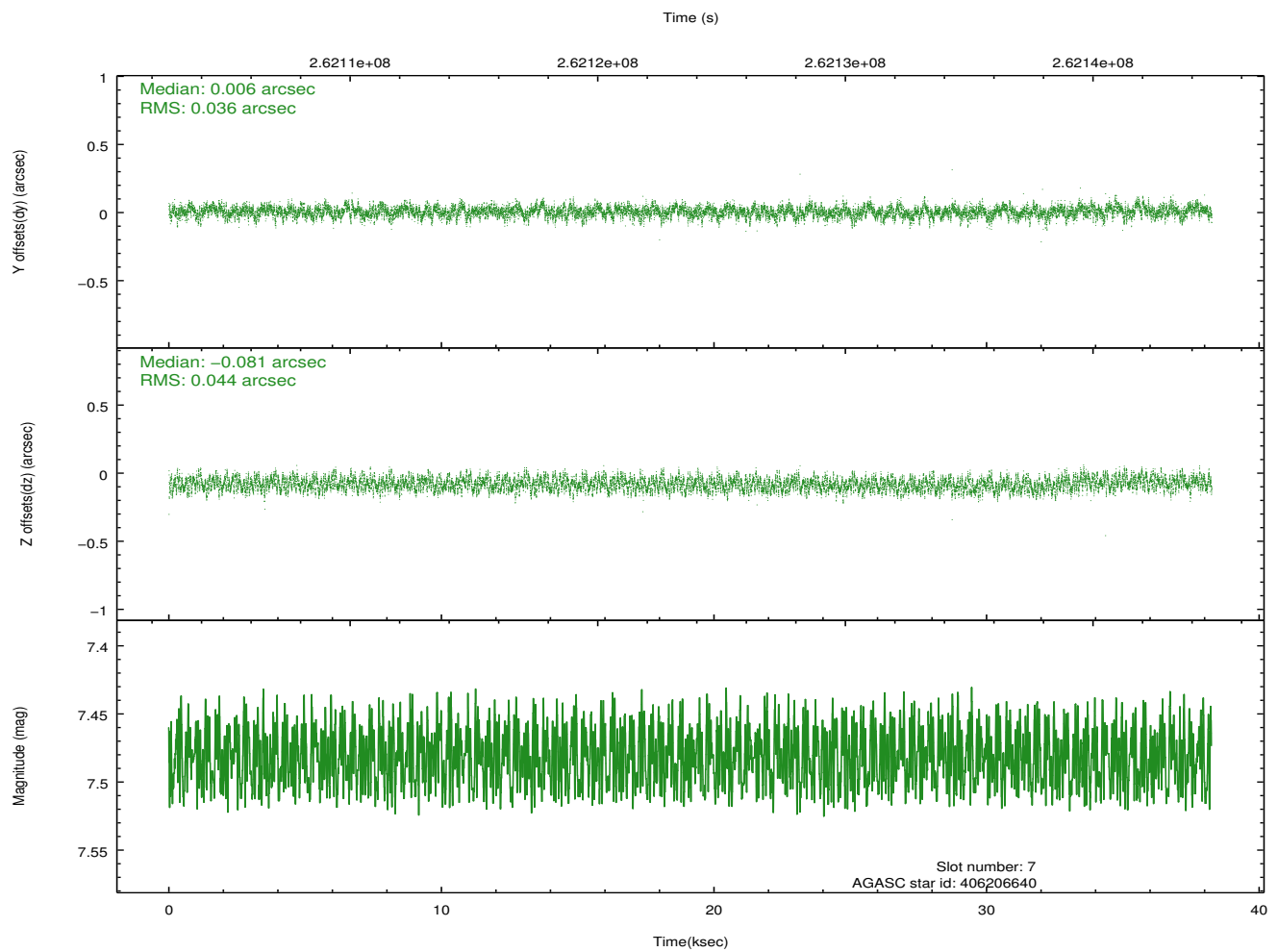
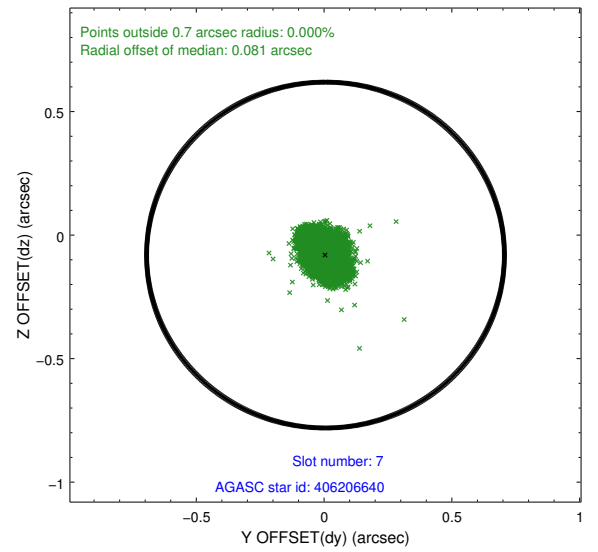
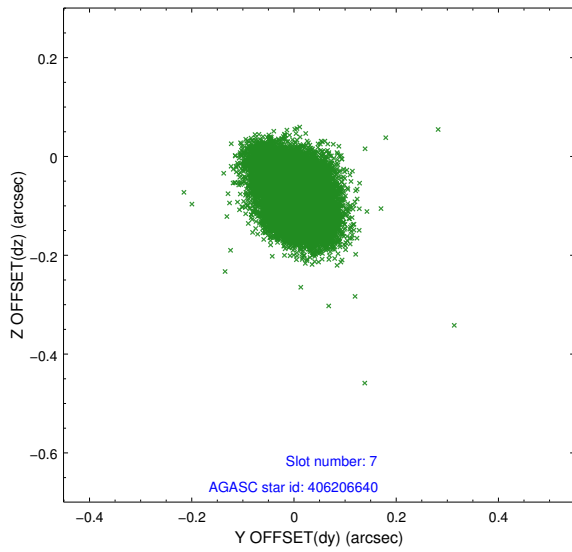
Time (s)



2.4.4 Slot 6

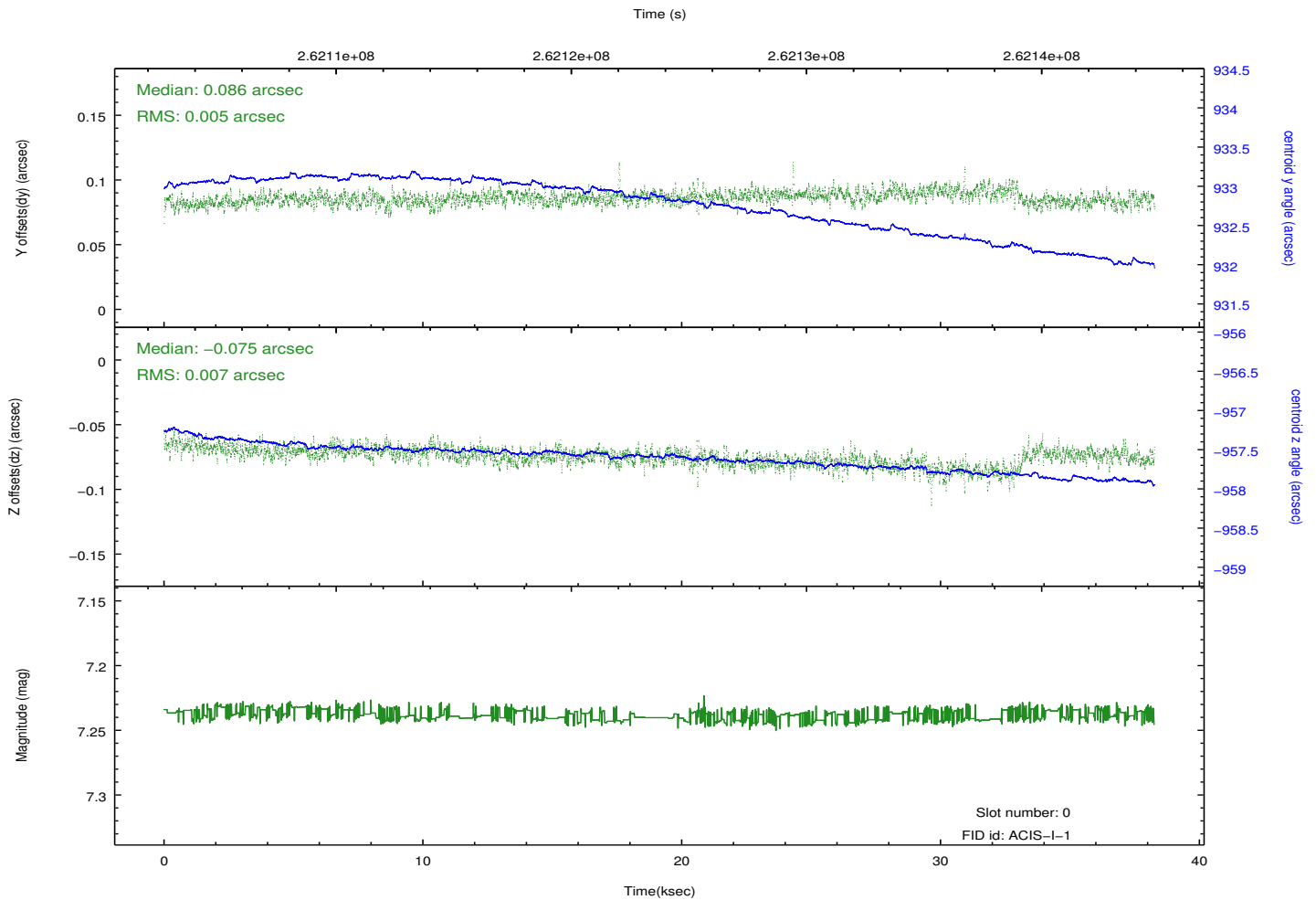
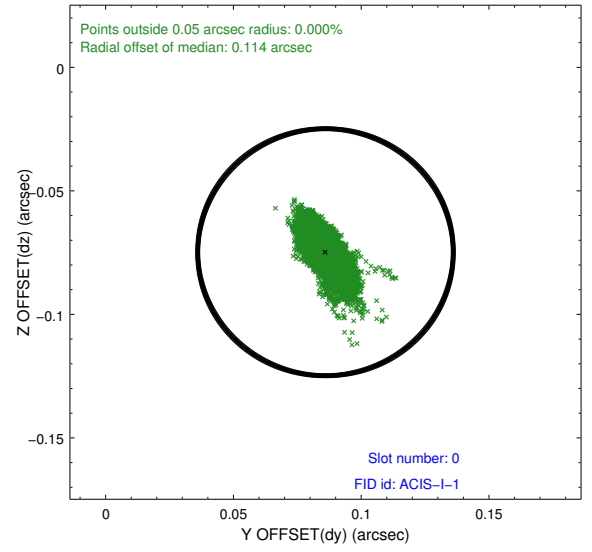
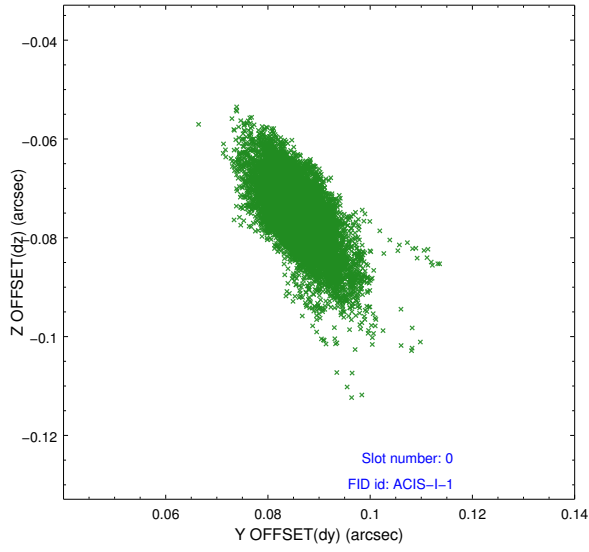


2.4.5 Slot 7

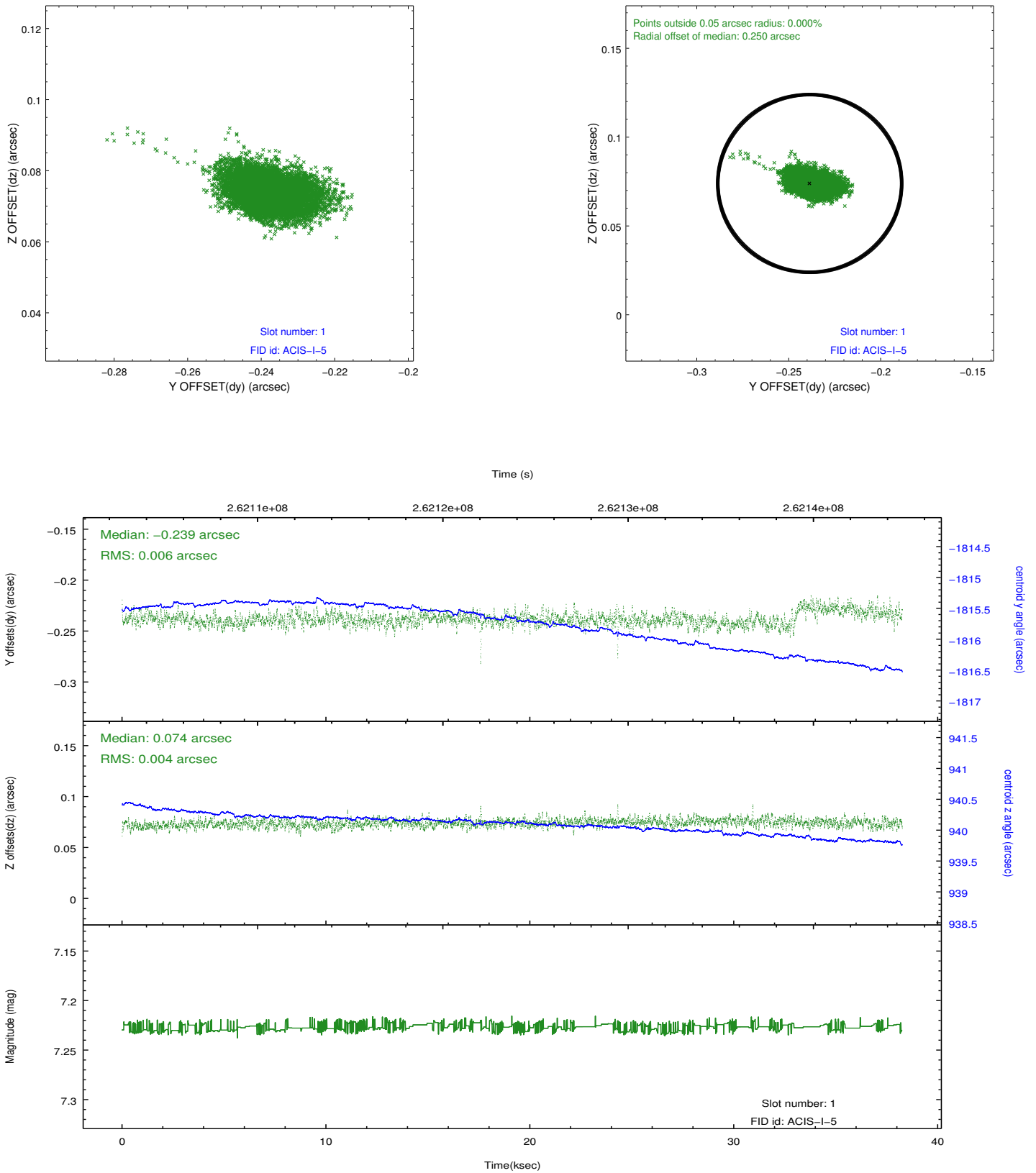


2.5 FID Slots

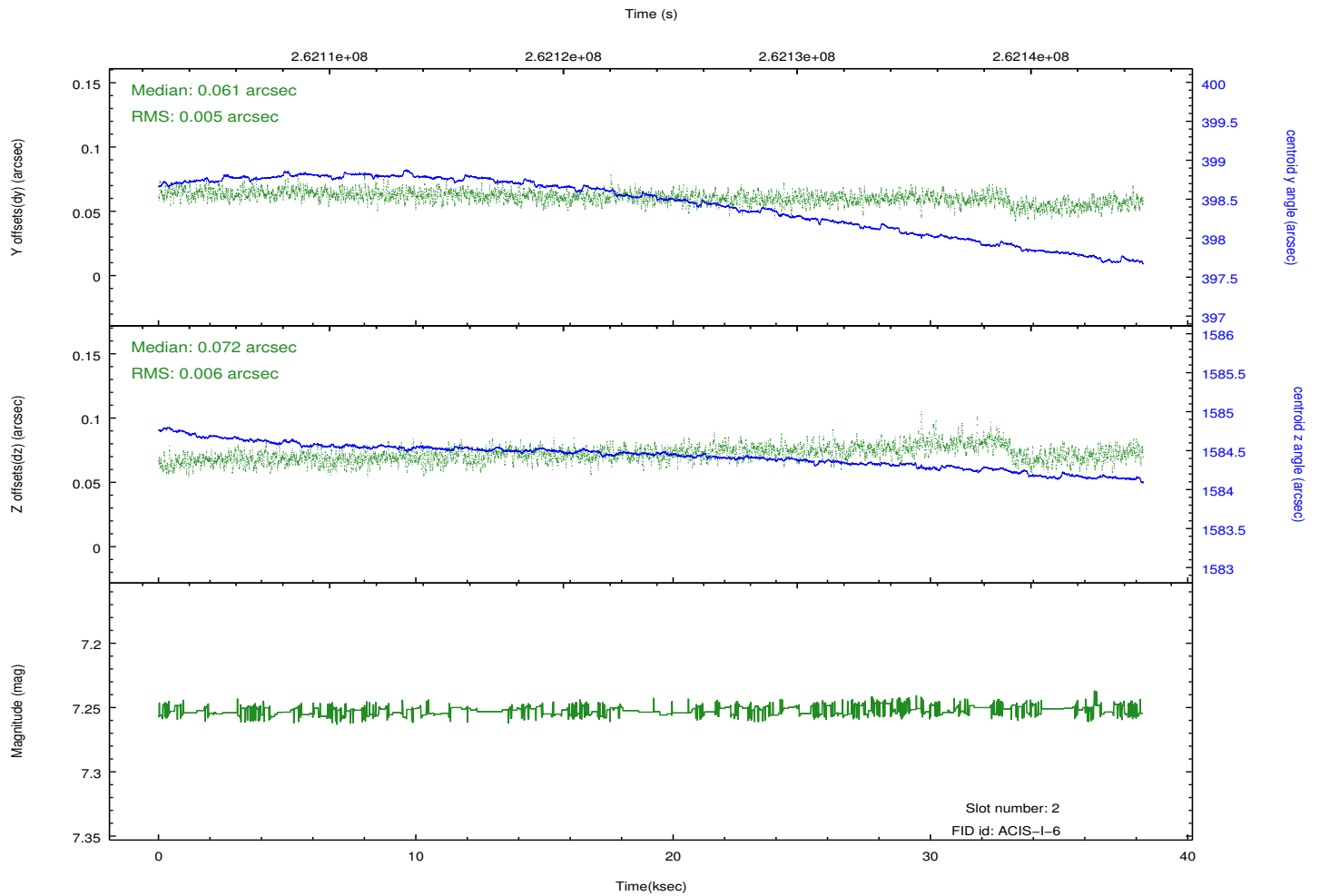
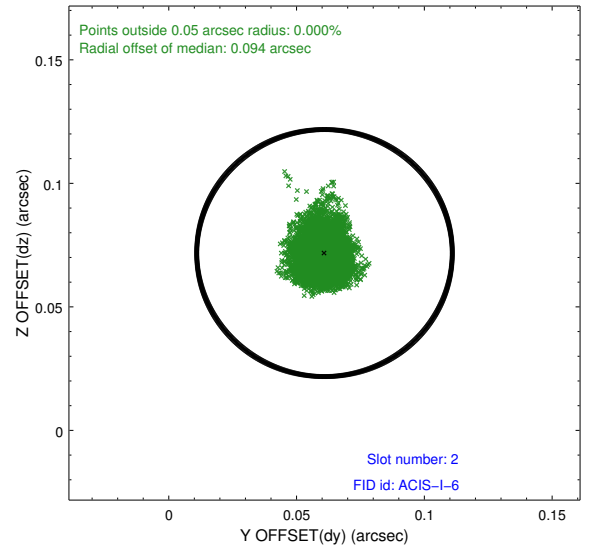
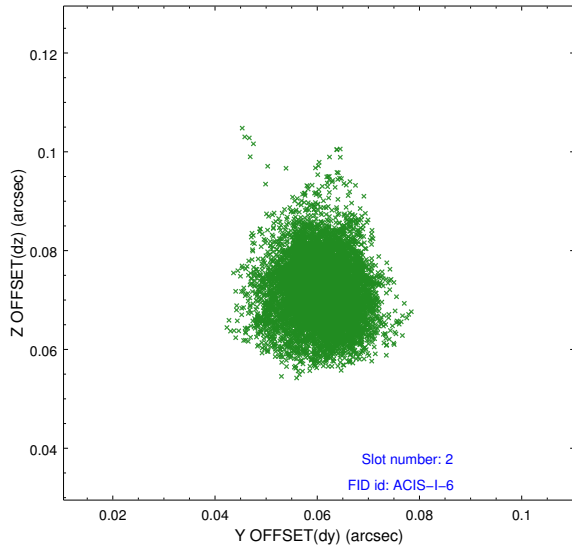
2.5.1 Slot 0



2.5.2 Slot 1



2.5.3 Slot 2



A Summary

A.1 Status

V&V Scientist	Jen Lauer
V&V Date (YYYY-MM-DD)	2012.04.02
V&V Edition	1
V&V Disposition and Status	OK
V&V Charge Time	38.0400179

A.2 Comments