

V&V Reference Report

L2 ASCDS Version : 8.4.5

Observation 742 - L2 Version 6
Chandra X-Ray Center

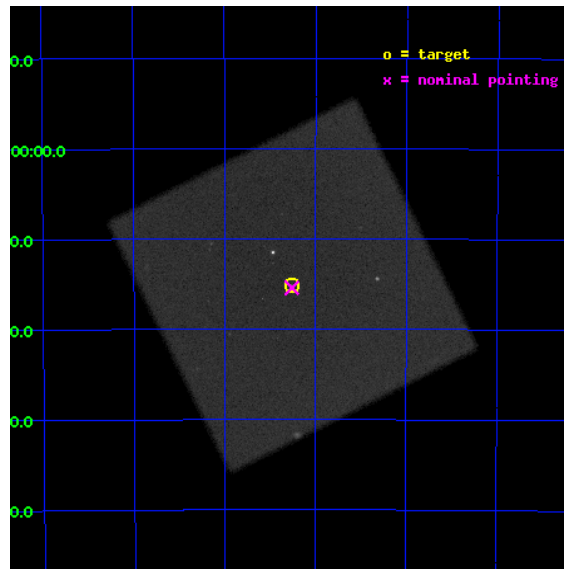
L2 Processing Date : Aug 23 2012

Contents

1	Front	2
2	OBI	3
2.1	OBI	3
2.1.1	Images	3
2.1.2	Parameters	4
2.1.3	Events	4
2.2	Compared Parameters	5
2.3	Aspect	6
2.4	Star Slots	9
2.4.1	Slot 3	9
2.4.2	Slot 4	10
2.4.3	Slot 5	11
2.4.4	Slot 6	12
2.4.5	Slot 7	13
2.5	FID Slots	14
2.5.1	Slot 0	14
2.5.2	Slot 1	15
2.5.3	Slot 2	16
A	Summary	17
A.1	Status	17
A.2	Comments	17

1 Front

seq_num	500038	Sequence number
obs_id	742	Observation id
title	THE MILLISECOND PULSAR PSR J0437-4715: MAGNETOSPHERE OR ATMOSPHERE?	
observer	Dr. George Pavlov	Principal investigator
object	PSR J0437-4715	Source name
ra_targ	69.315833	Observer's specified target RA [deg]
dec_targ	-47.252278	Observer's specified target Dec [deg]
ra_nom	69.315238152801	Nominal RA [deg]
dec_nom	-47.256833631594	Nominal Dec [deg]
roll_nom	288.62014944282	Nominal Roll [deg]
revision	6	Processing version of data
ontime	22487.732068919	[s]
liveltime	22262.008334889	Ontime multiplied by DTCOR
l2events	753608	Number of level 2 events

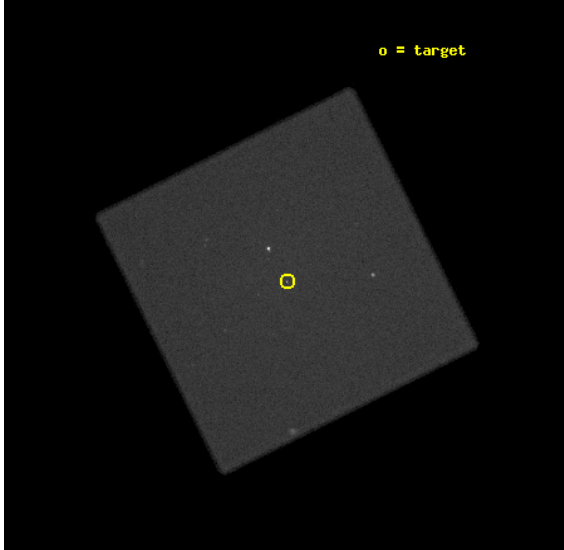


2 OBI

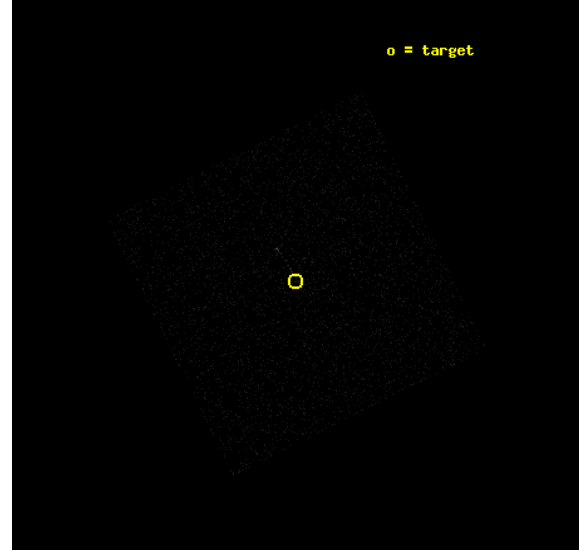
2.1 OBI

2.1.1 Images

Level 1 Image



Level 1 Bad Events



2.1.2 Parameters

obi_num	0	Obi number	sched_exp_time	22000.000000	[s] Scheduled observation exposure time
ascdsver	8.4.5	Processing system revision	ontime	22487.732069917	[s]
caldsver	4.5.1.1	 	l1events	1172276	Number of level 1 events
date	2012-08-23T19:35:27	Date and time of file creation			
revision	6	Processing version of data			

2.1.3 Events

Level 1 Events

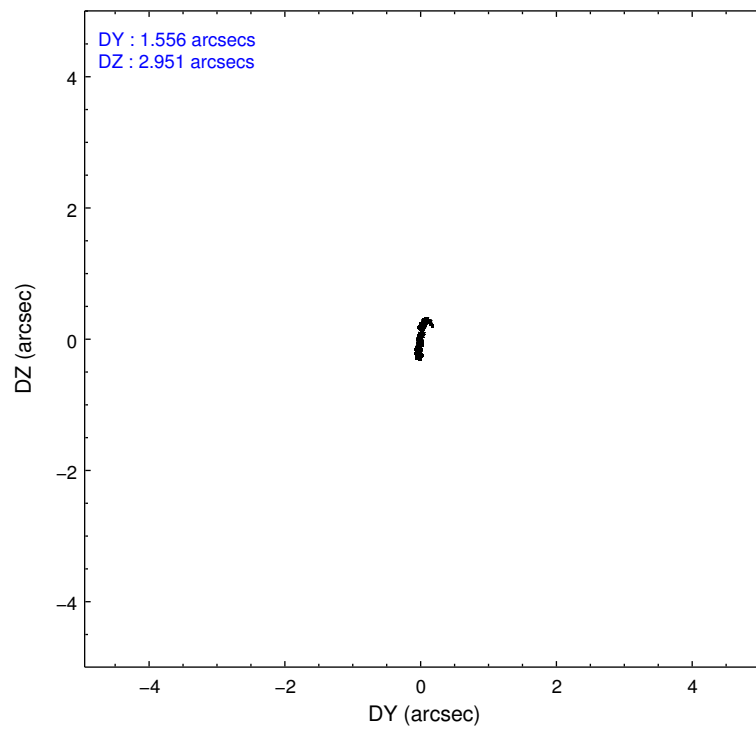
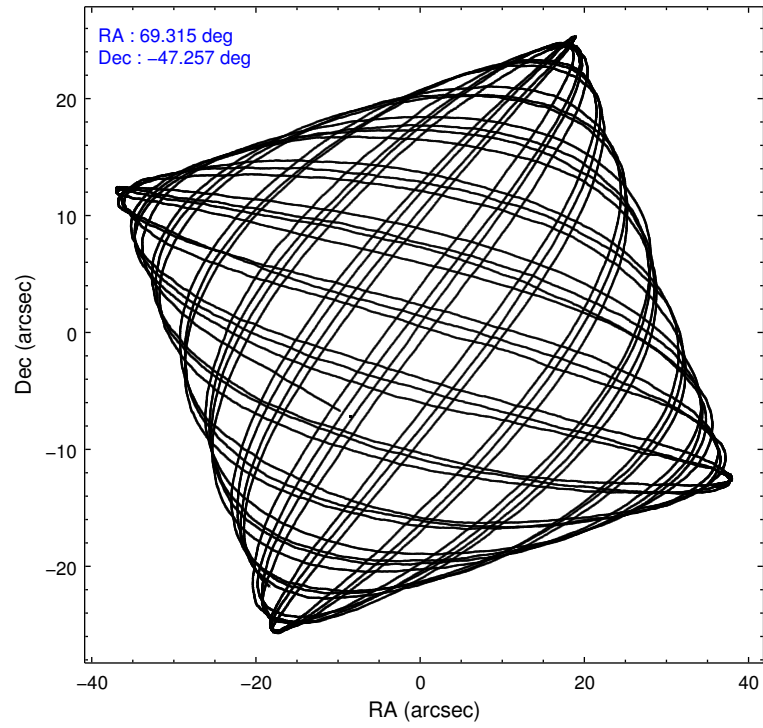
	segment 0
level 1 events	1172276
rejected events	43850
rejected %	3%

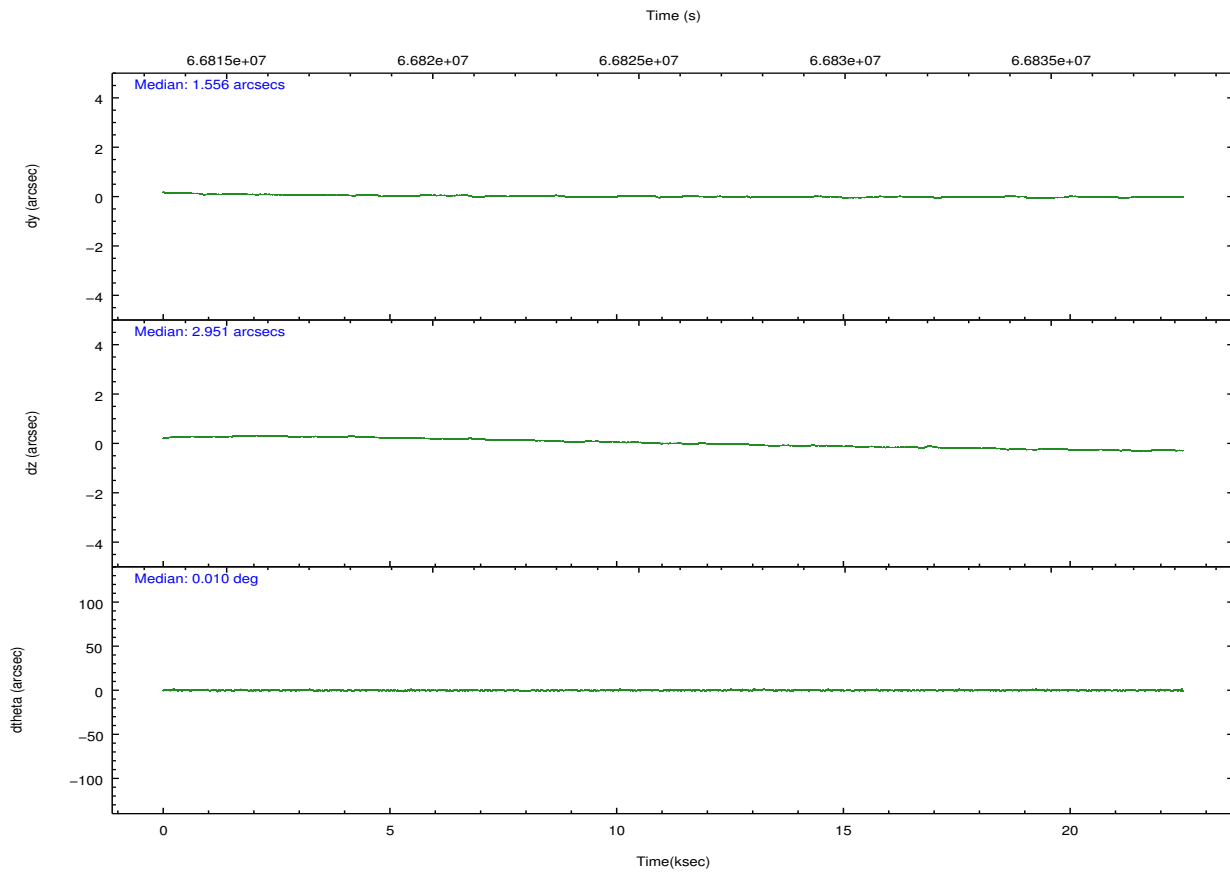
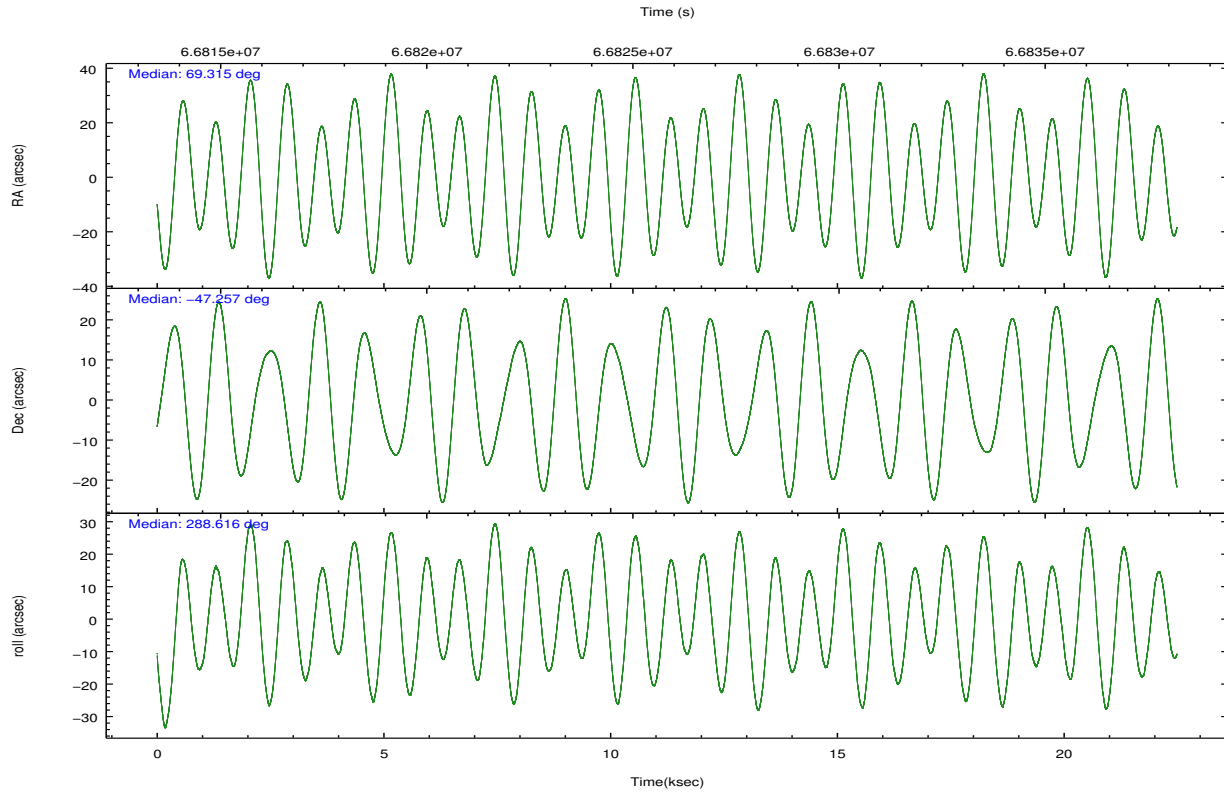
2.2 Compared Parameters

Parameter	Planned	Actual
Instrument	HRC	HRC
Detector	HRC-I	HRC-I
Grating	NONE	NONE
Data mode	OBSERVING	OBSERVING
Observation mode	POINTING	POINTING
[deg] Pointing RA	69.284841	69.31523815280106
[deg] Pointing Dec	-47.238989	-47.25683363159356
[deg] Pointing Roll	288.693321	288.6201494428207
[mm] SIM focus pos	-1.040293	-1.038866356238299
[mm] SIM defocus	0	0.001426264420575141
[mm] SIM translation stage pos	126.985494	126.9854943052878
[mm] SIM translation stage offset	0	-5.413686238853188e-06
[s] Observation start time (MET)	66815072.184000	66814139.796425
Observation start date	2000-02-13T07:43:28	2000-02-13T07:28:59
[s] Observation end time (MET)	66837072.184000	66837417.547274
Observation end date	2000-02-13T13:50:08	2000-02-13T13:56:57

Parameter	Planned	Actual
Obspar format version number	7	7
Obspar file type	PREDICTED	ACTUAL
Obspar update status	NONE	UPDATED

2.3 Aspect



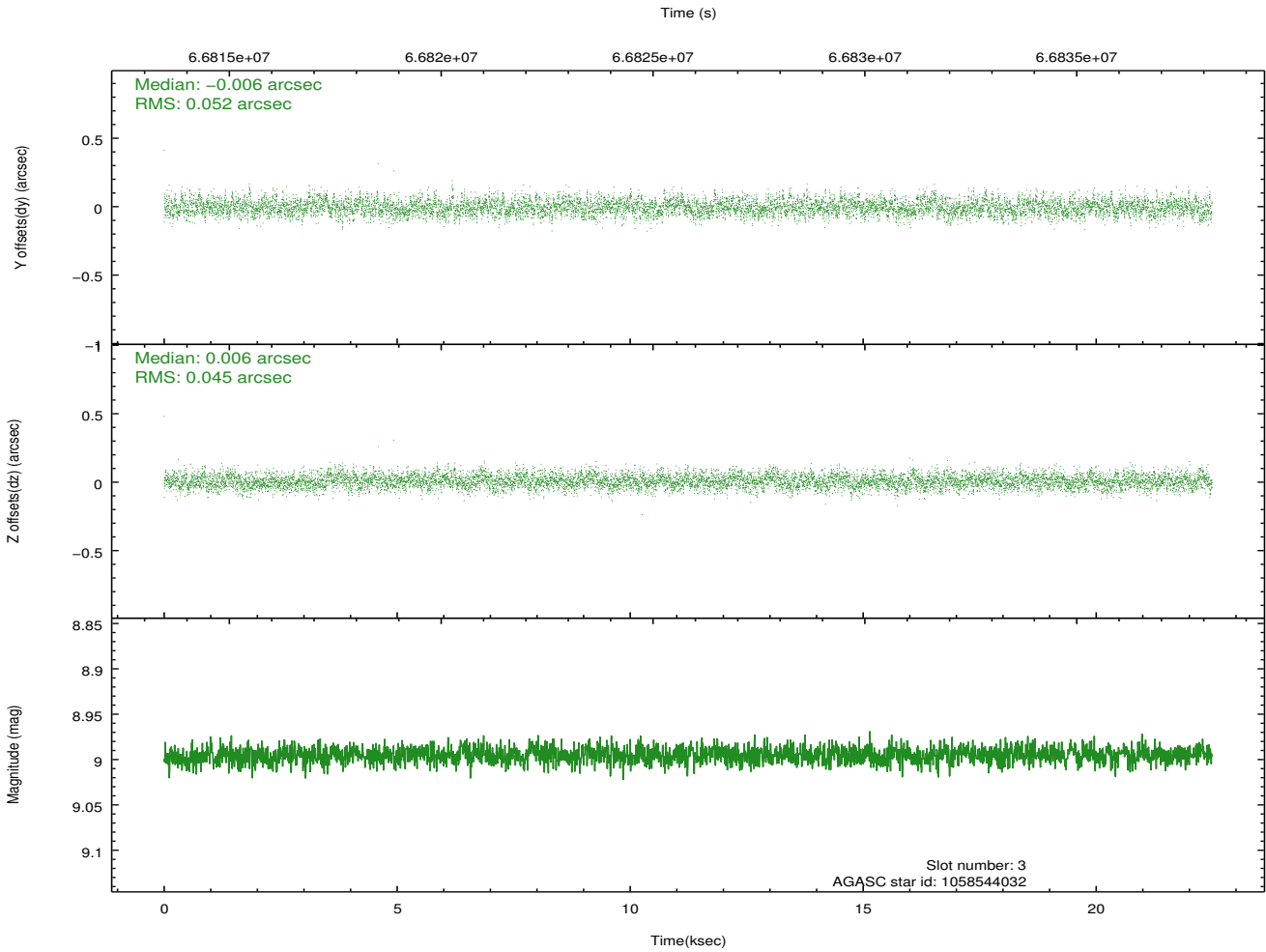
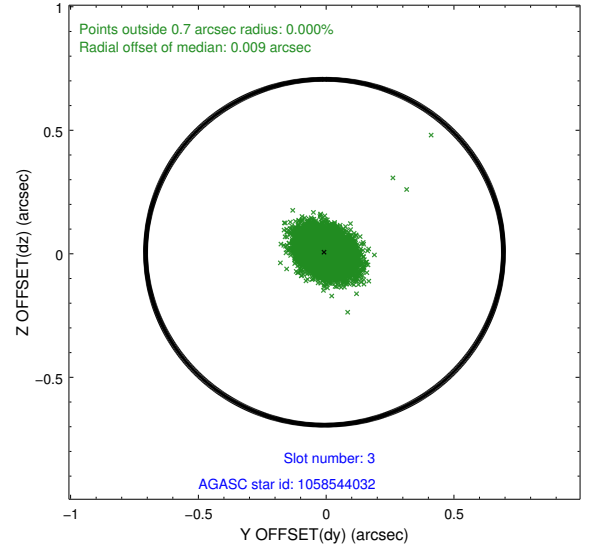
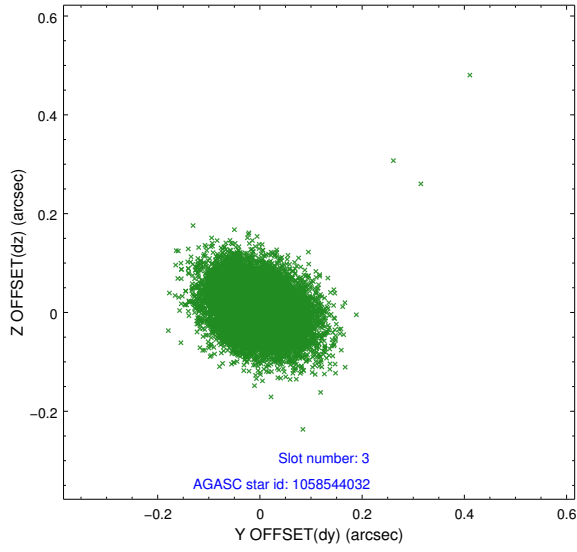


Slot Statistics

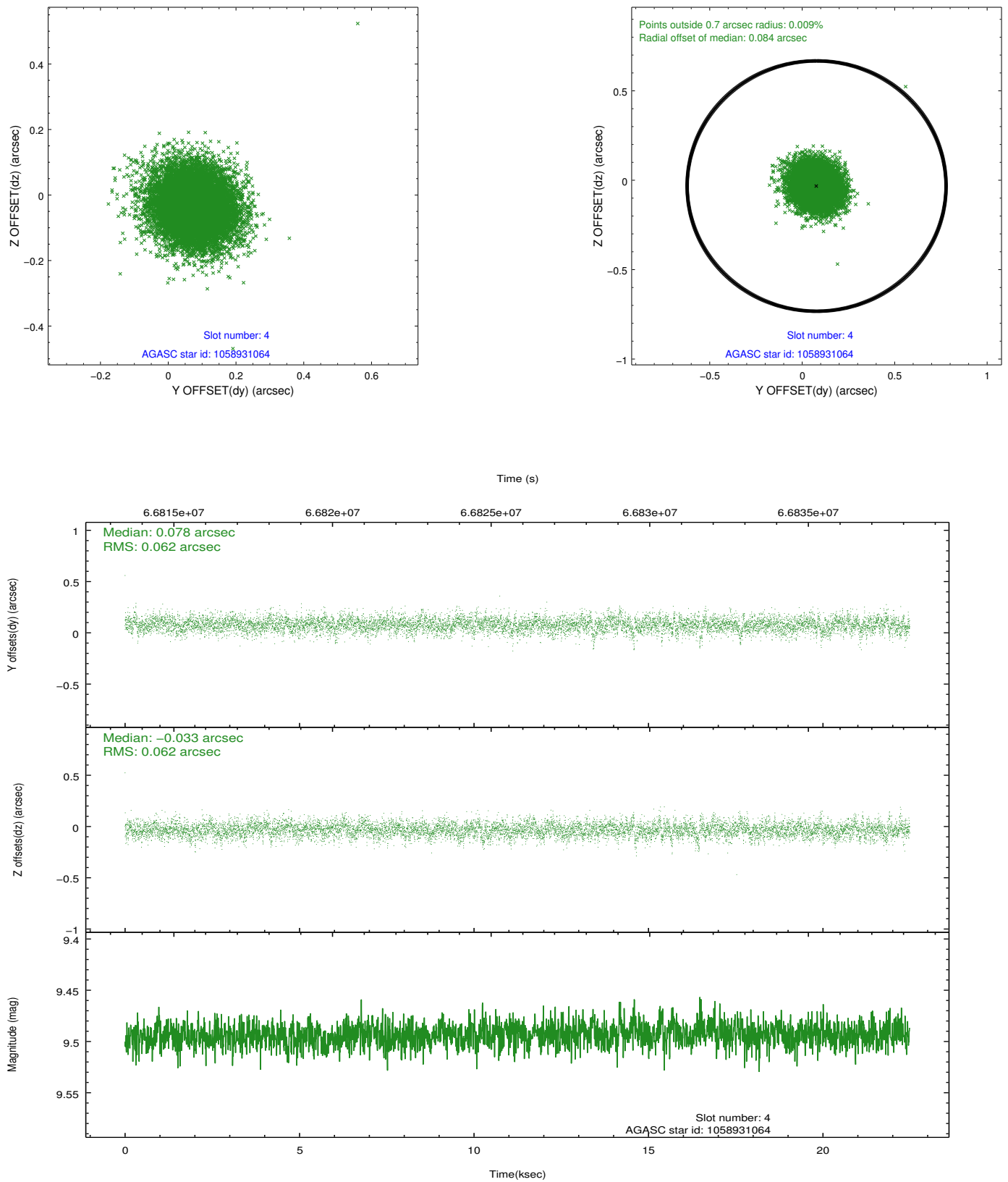
slot	status	id	mag	n_pts	med_dy	med_dz	dr1	dr2	ra	dec	mean_y	mean_z
0	FID	HRC-I-1	6.95	5485	0.061	0.012	0.011	0.018	0.000000	0.000000	-756.97	-1290.72
1	FID	HRC-I-3	7.03	5486	0.034	-0.041	0.011	0.018	0.000000	0.000000	-1185.58	1013.57
2	FID	HRC-I-4	6.98	5485	0.020	-0.060	0.005	0.009	0.000000	0.000000	1285.61	1011.52
3	GUIDE	1058544032	9.00	10967	-0.006	0.006	0.073	0.118	69.576631	-47.141596	-101.62	788.65
4	GUIDE	1058931064	9.49	10961	0.078	-0.033	0.092	0.153	69.760694	-47.722390	2021.46	532.84
5	GUIDE	1058541272	9.23	10965	-0.033	-0.048	0.081	0.132	68.392275	-46.921735	-1772.85	-1717.06
6	GUIDE	1058542336	9.63	10961	-0.003	-0.012	0.124	0.193	69.740954	-46.597293	-1823.56	1807.74
7	GUIDE	1058541248	10.20	10957	-0.029	0.088	0.131	0.220	69.904987	-47.056466	-129.24	1649.51

2.4 Star Slots

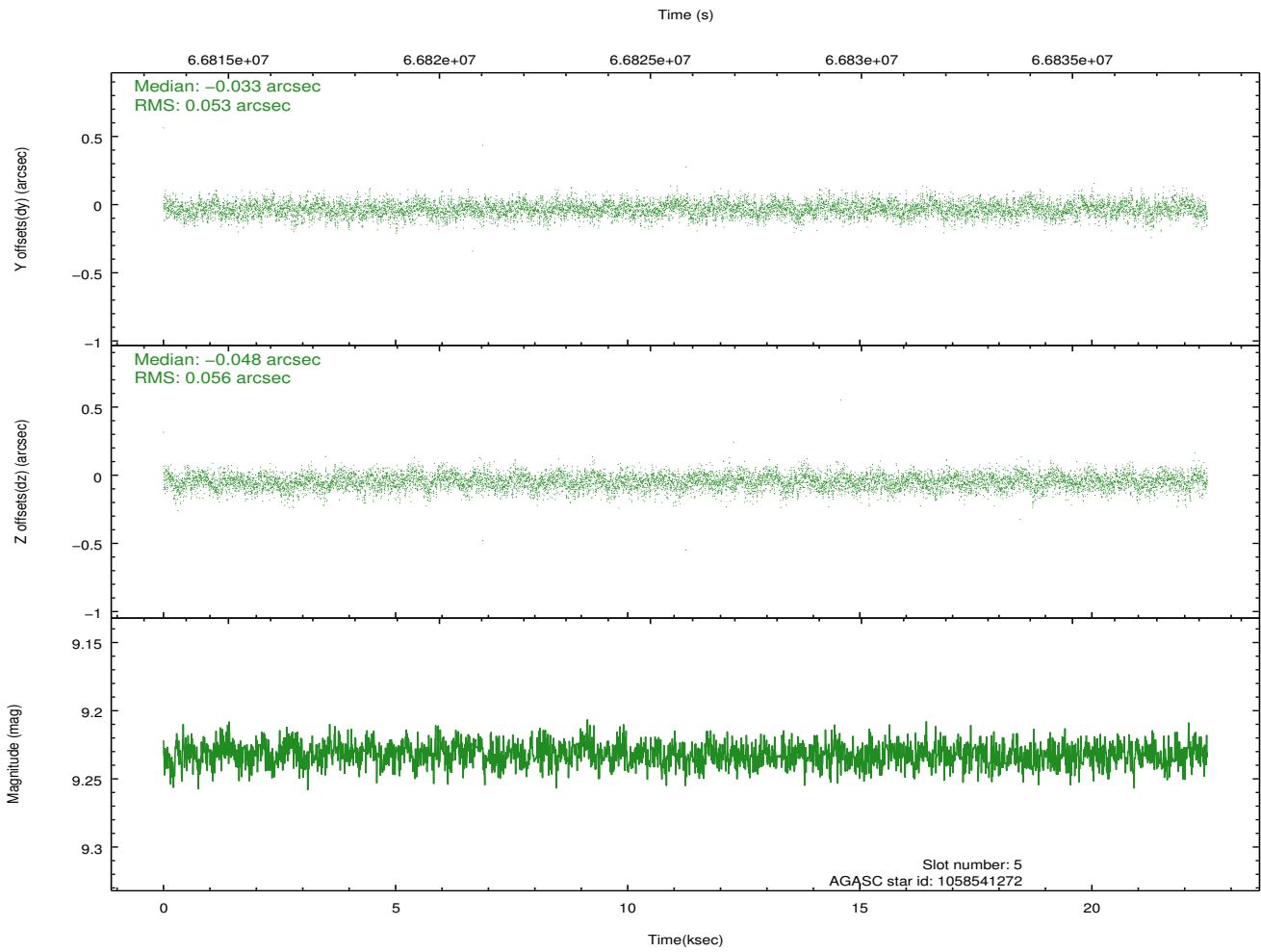
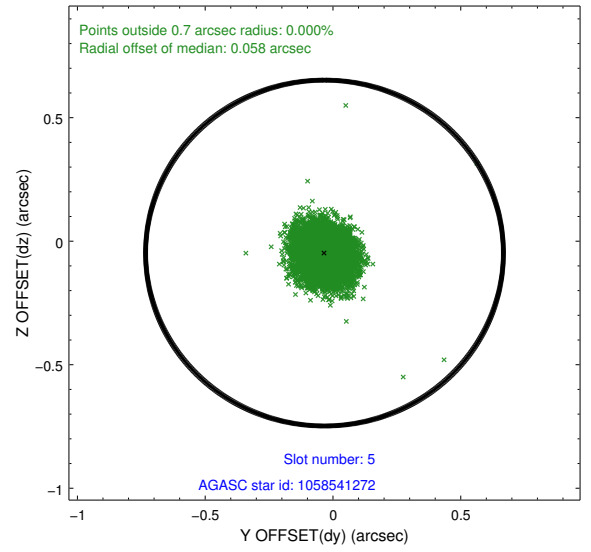
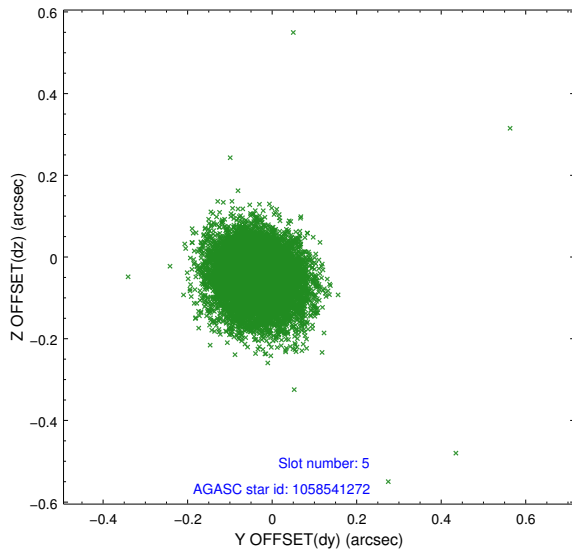
2.4.1 Slot 3



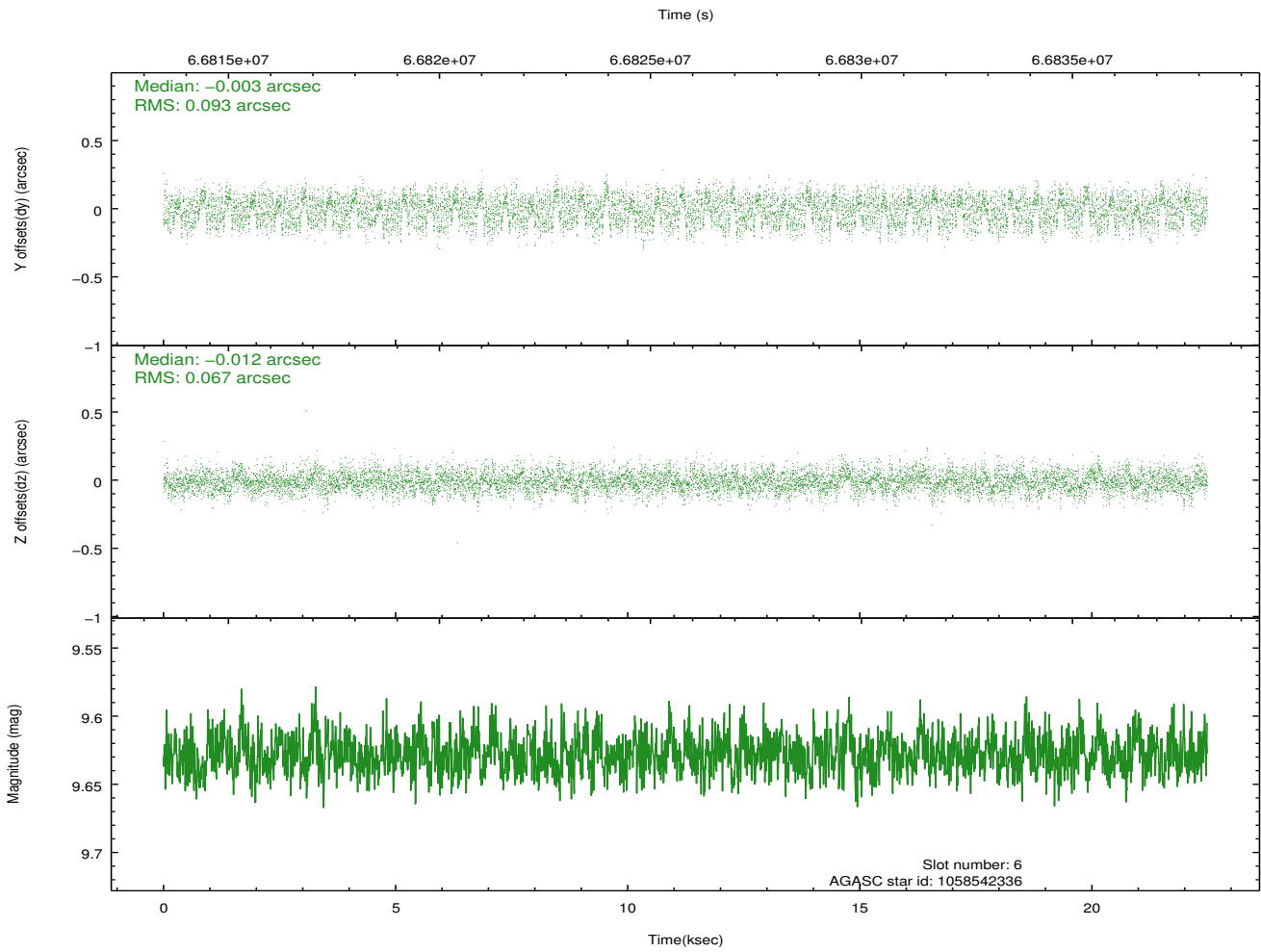
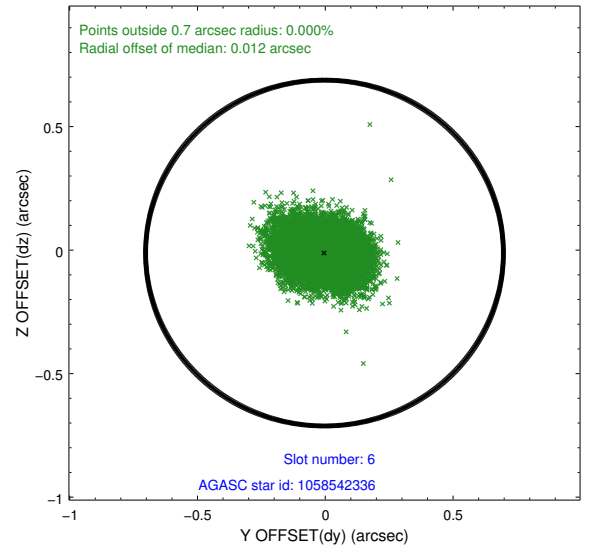
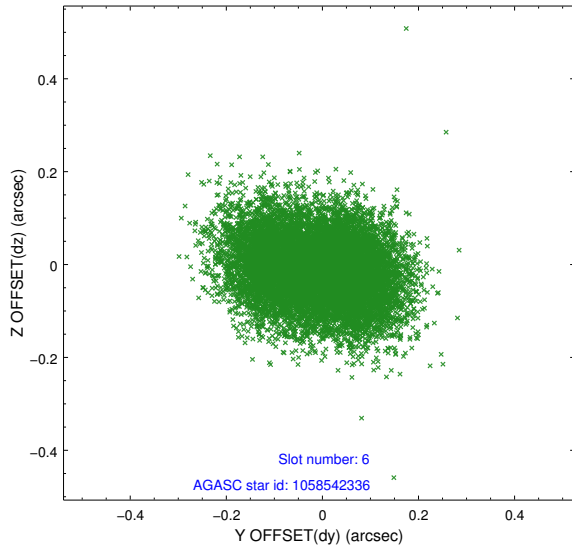
2.4.2 Slot 4



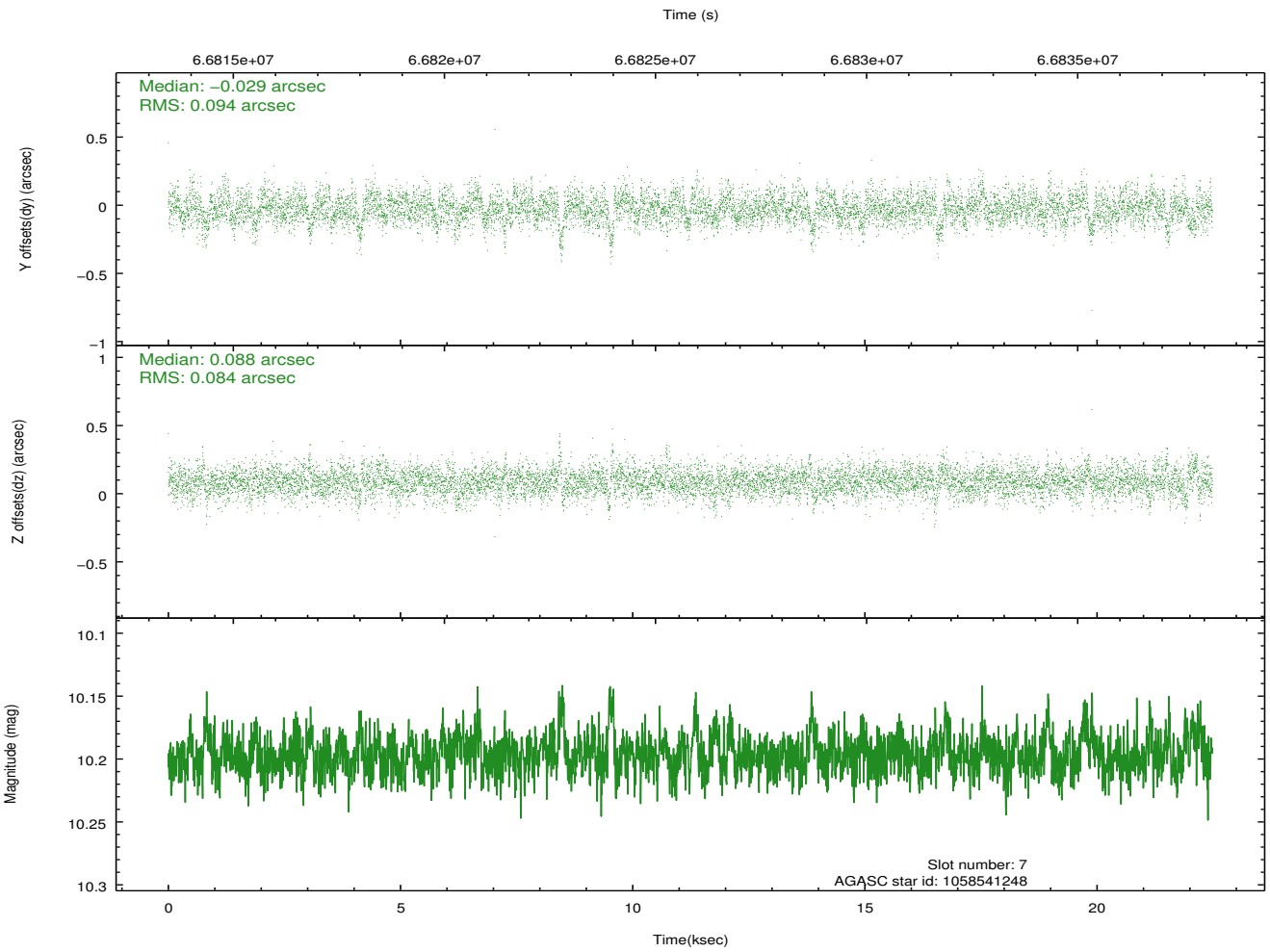
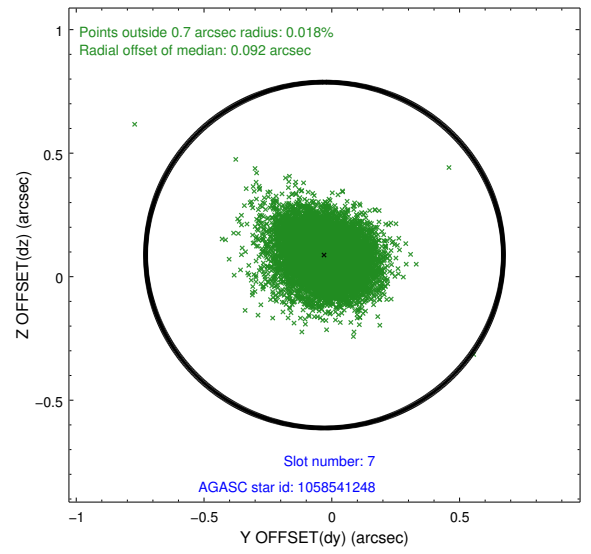
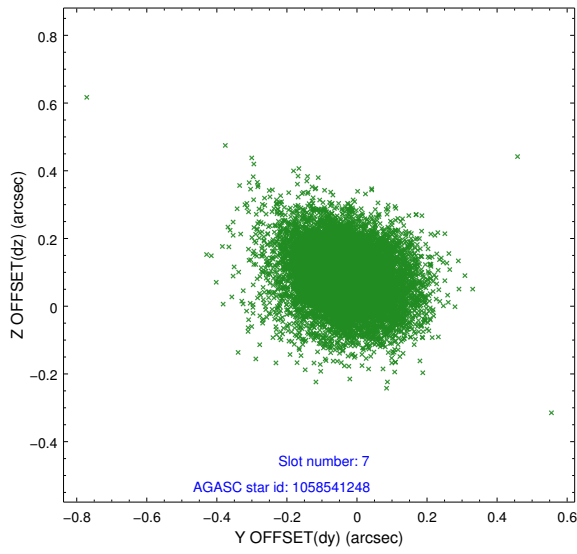
2.4.3 Slot 5



2.4.4 Slot 6

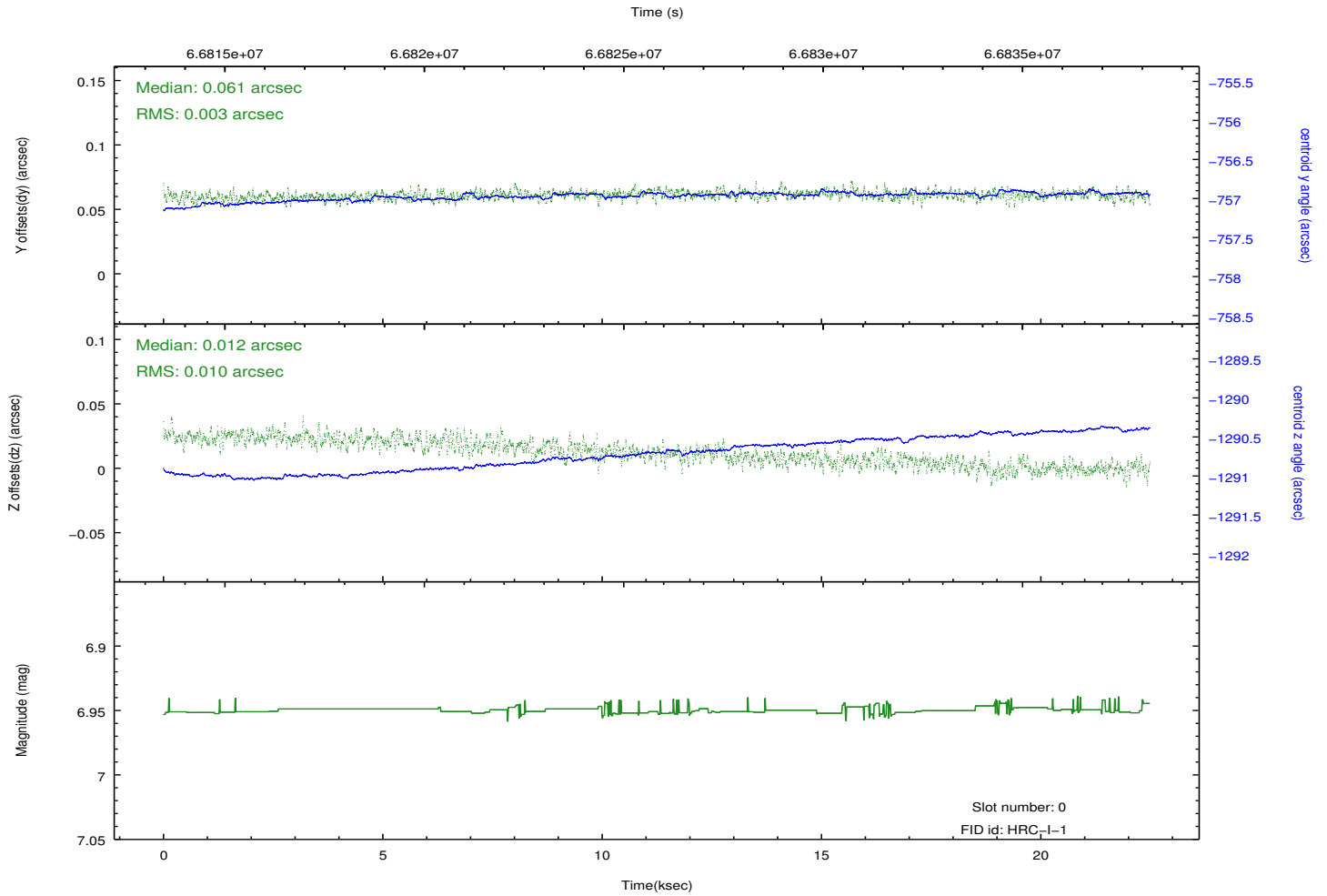
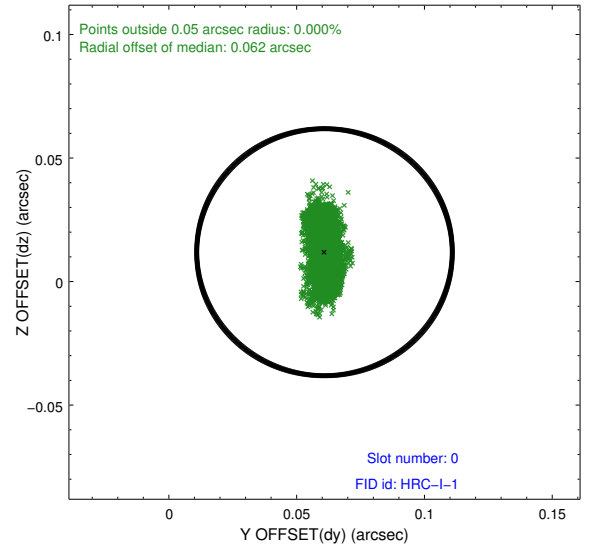
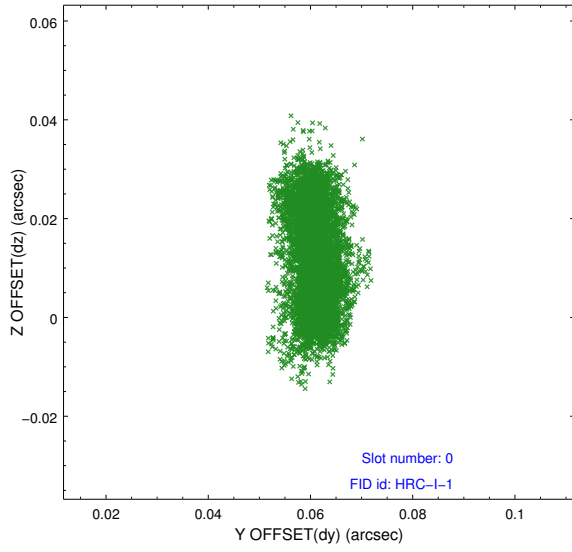


2.4.5 Slot 7

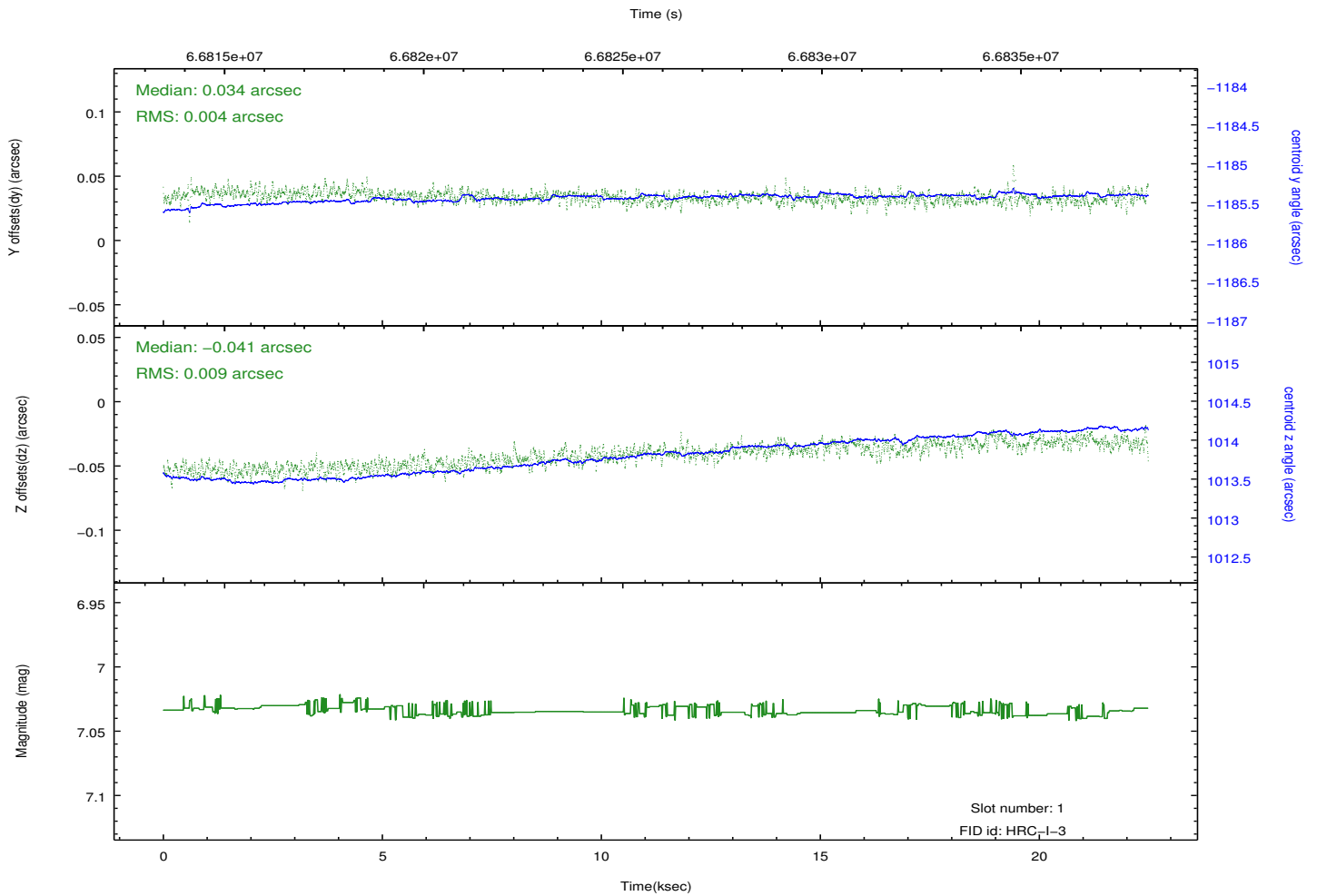
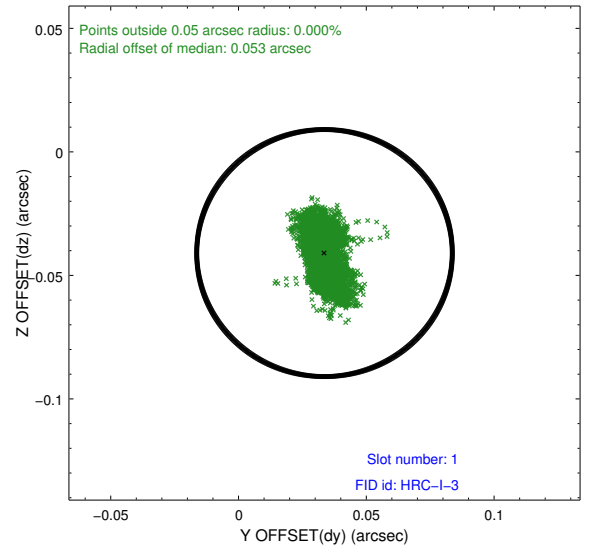
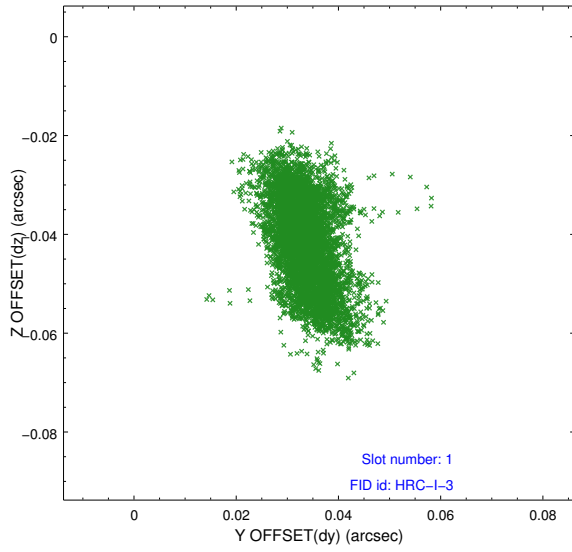


2.5 FID Slots

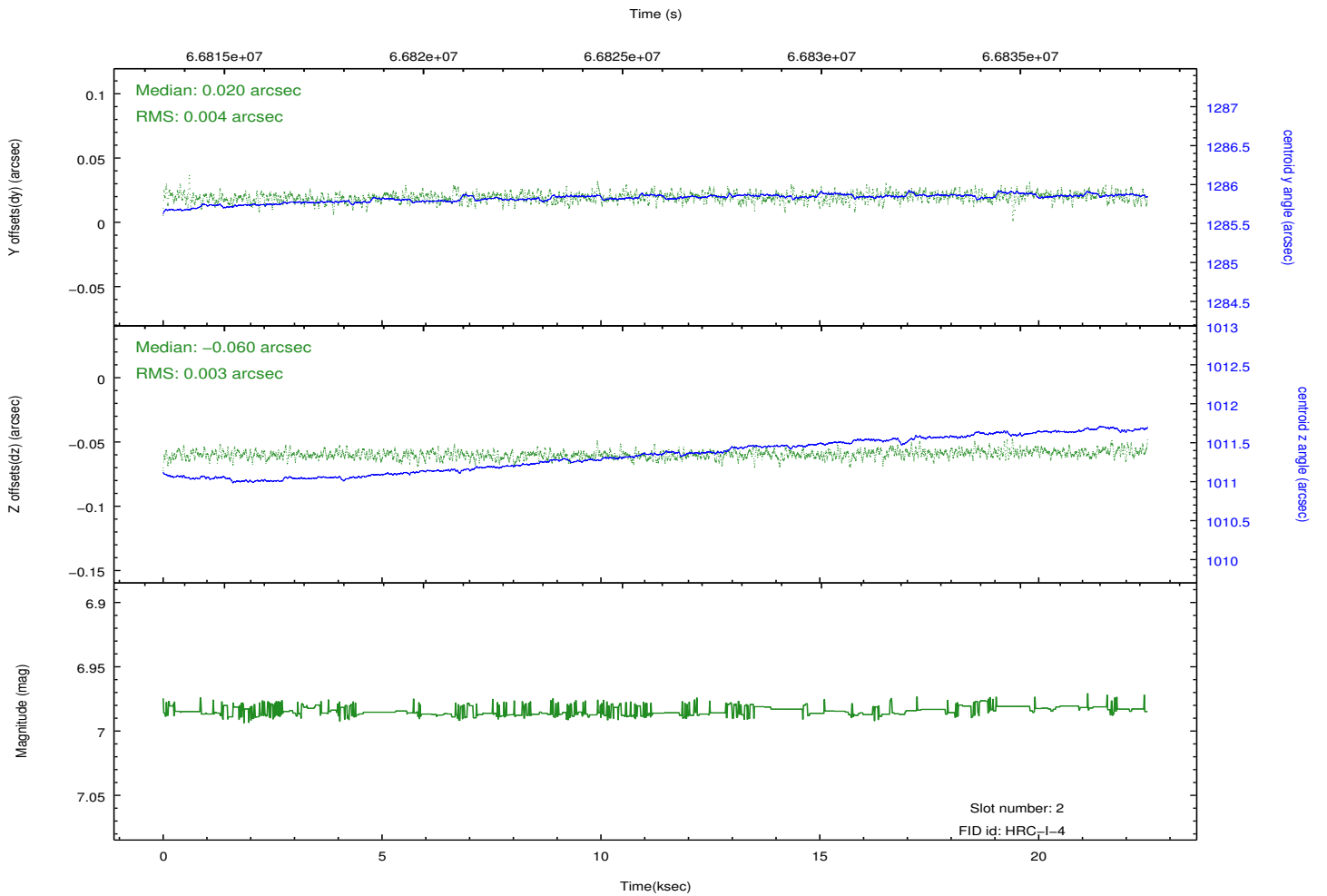
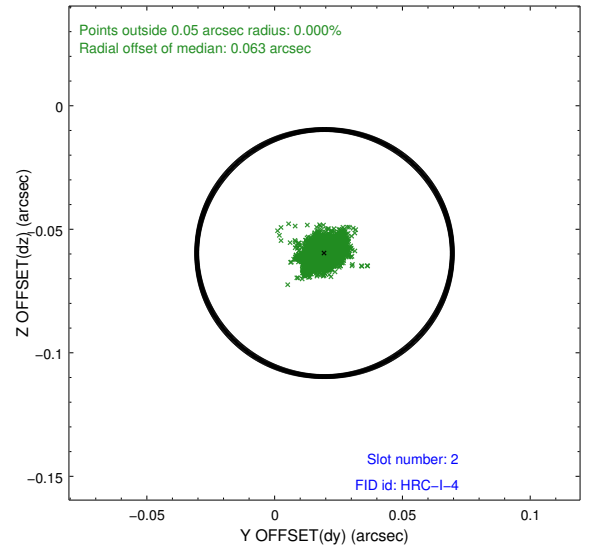
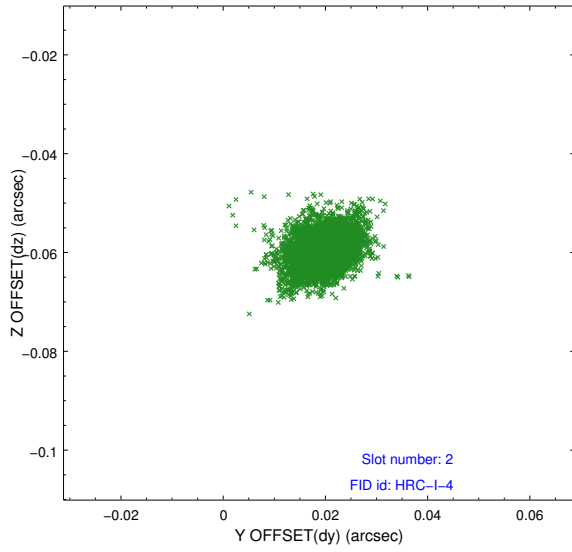
2.5.1 Slot 0



2.5.2 Slot 1



2.5.3 Slot 2



A Summary

A.1 Status

V&V Scientist	Joy Nichols
V&V Date (YYYY-MM-DD)	2012.08.24
V&V Edition	1
V&V Disposition and Status	OK
V&V Charge Time	22.477

A.2 Comments