

V&V Reference Report

L2 ASCDS Version : 8.1.1

Observation 752 - L2 Version 4
Chandra X-Ray Center

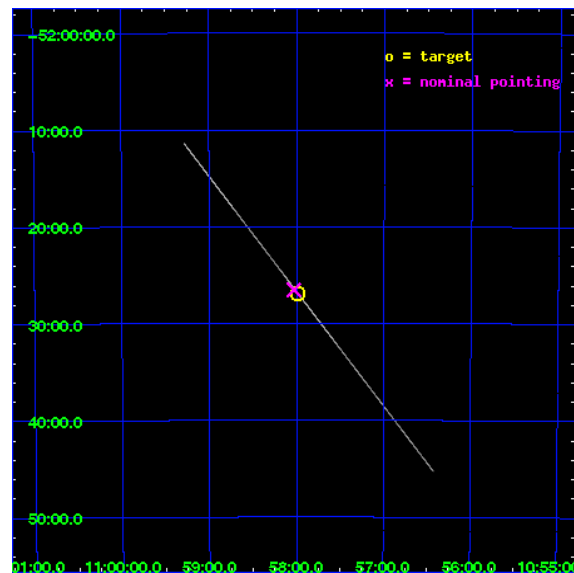
L2 Processing Date : Nov 29 2009

Contents

1	Front	2
2	OBI	3
2.1	OBI	3
2.1.1	Images	3
2.1.2	Bias	3
2.1.3	Parameters	4
2.1.4	Events	4
2.2	Compared Parameters	5
2.3	Aspect	6
2.4	Star Slots	9
2.4.1	Slot 3	9
2.4.2	Slot 4	10
2.4.3	Slot 5	11
2.4.4	Slot 6	12
2.4.5	Slot 7	13
2.5	FID Slots	14
2.5.1	Slot 0	14
2.5.2	Slot 1	15
2.5.3	Slot 2	16
A	Summary	17
A.1	Status	17
A.2	Comments	17

1 Front

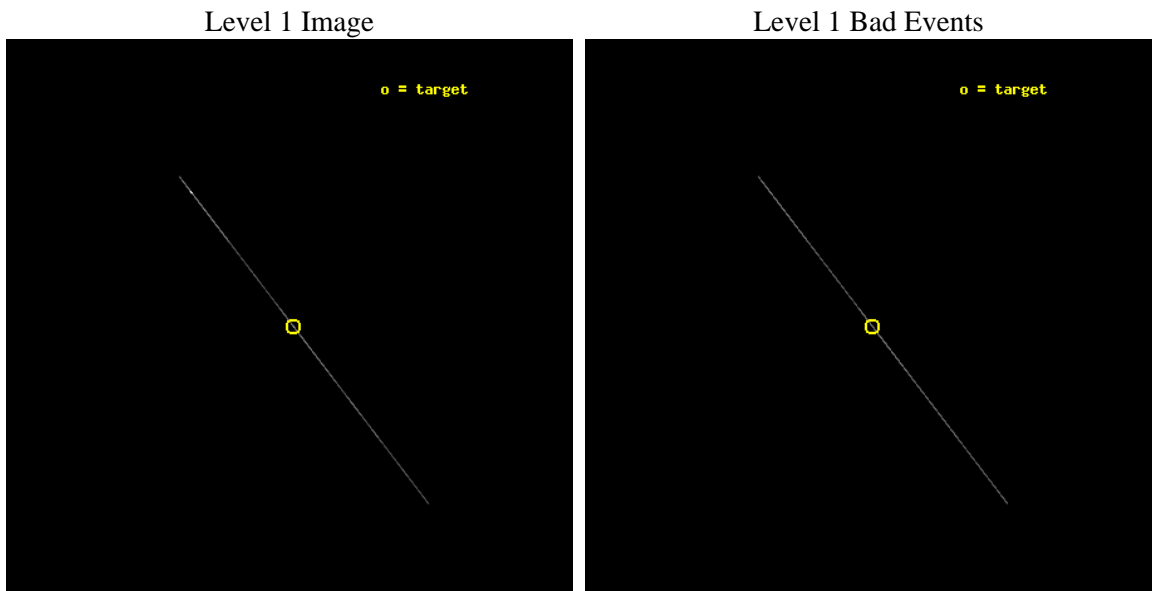
seq_num	500048	Sequence number
obs_id	752	Observation id
title	SPECTROSCOPY AND TIMING OF THE MIDDLE-AGED PULSAR 1055-52	Proposal
observer	Dr. George Pavlov	Principal investigator
object	PSR 1055-52	Source name
ra_targ	164.495	Observer's specified target RA
dec_targ	-52.448972	Observer's specified target Dec
ra_nom	164.50745136485	Nominal RA
dec_nom	-52.442237095579	Nominal Dec
roll_nom	52.358253976464	Nominal Roll
revision	4	Processing version of data
ontime	40723.0	Sum of GTIs [s]
livetime	40563.92578125	Livetime [s]
ontime5	40721.541771501	Sum of GTIs [s]
ontime6	40720.083835125	Sum of GTIs [s]
ontime7	40723.0	Sum of GTIs [s]
ontime8	40721.541787393	Sum of GTIs [s]
ontime9	40723.0	Sum of GTIs [s]
l2events	404508	Number of level 2 events



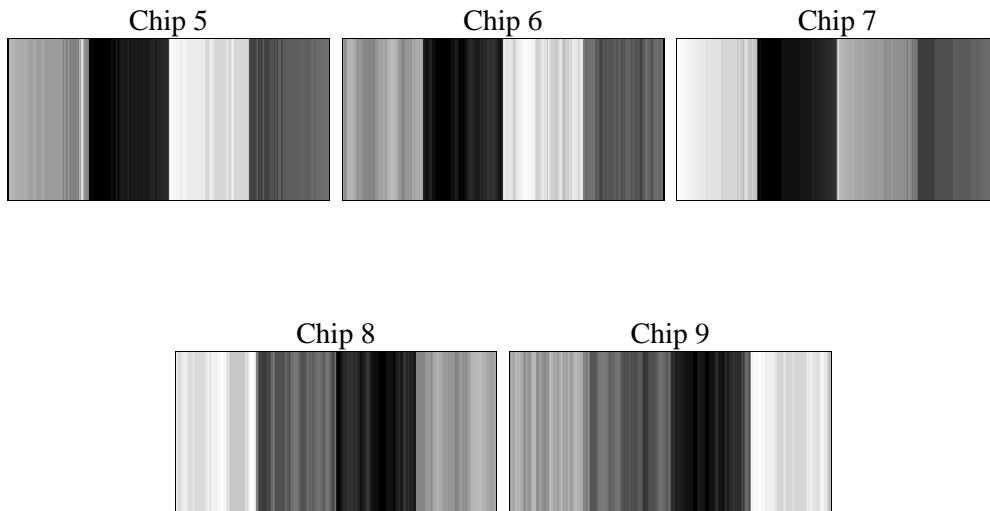
2 OBI

2.1 OBI

2.1.1 Images



2.1.2 Bias



2.1.3 Parameters

obi_num	0	Obi number	sched_exp_time	40542.603000	Scheduled observation exposure time
ascdsver	8.1.1	ASCDS version number	ontime	40723.0	Sum of GTIs [s]
caldbver	4.1.4	 	ontime5	40721.541771501	Sum of GTIs [s]
date	2009-11-29T23:35:35	Date and time of file creation	ontime6	40720.083835125	Sum of GTIs [s]
revision	4	Processing version of data	ontime7	40723.0	Sum of GTIs [s]
			ontime8	40721.541787393	Sum of GTIs [s]
			ontime9	40723.0	Sum of GTIs [s]
			l1events	1271123	Number of level 1 events

2.1.4 Events

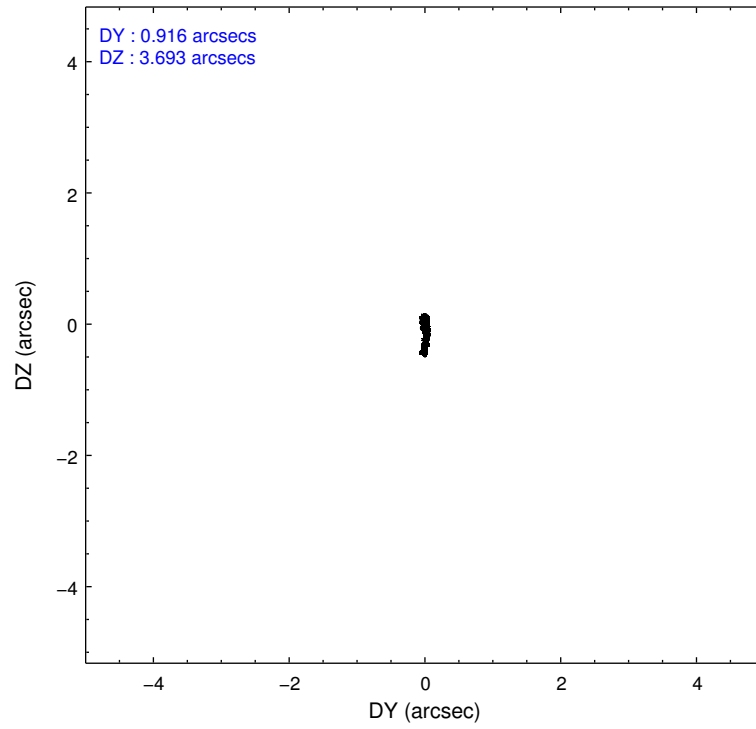
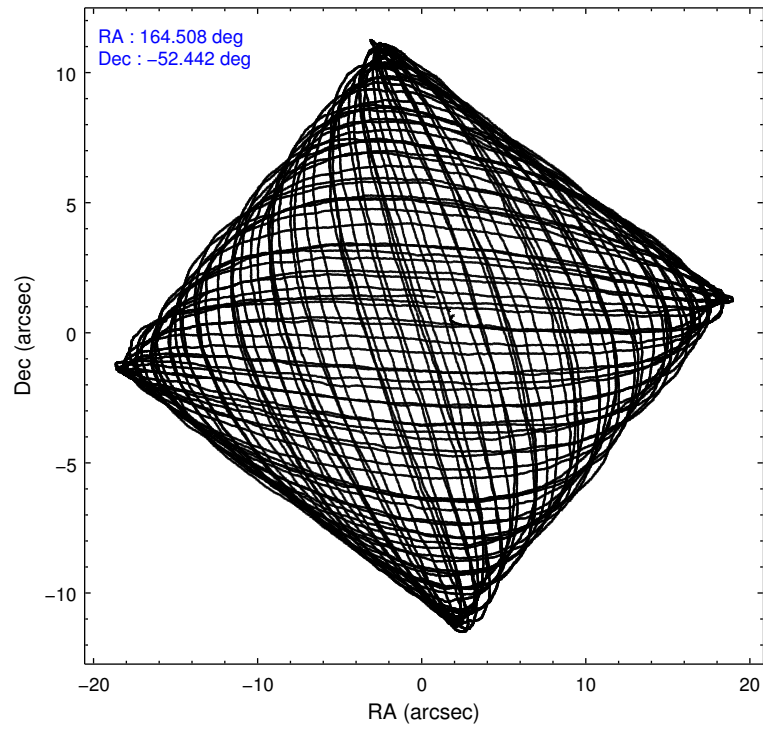
	ccd 5	ccd 6	ccd 7	ccd 8	ccd 9
level 1 events	912614	46427	175004	90014	47064
rejected events	18474	6806	20157	10457	7313
rejected %	2%	14%	11%	11%	15%

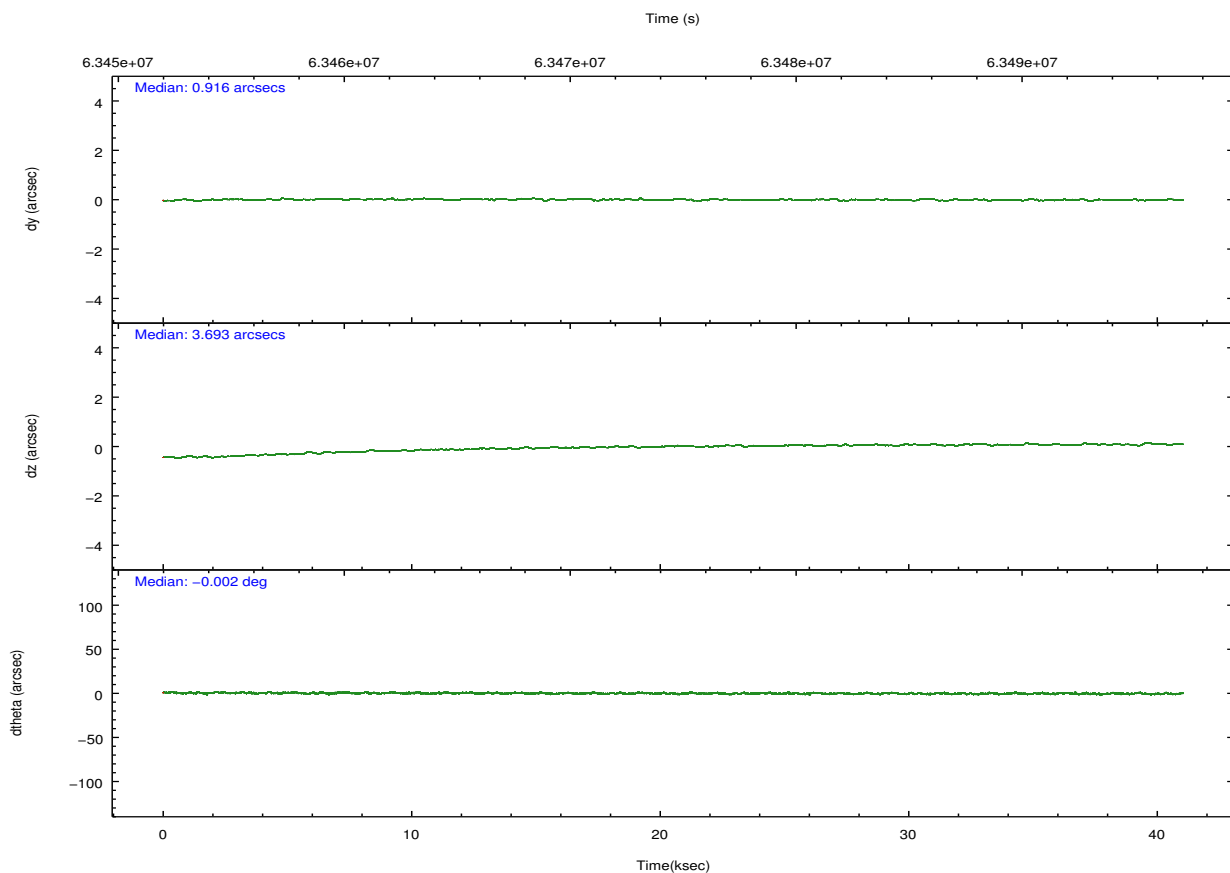
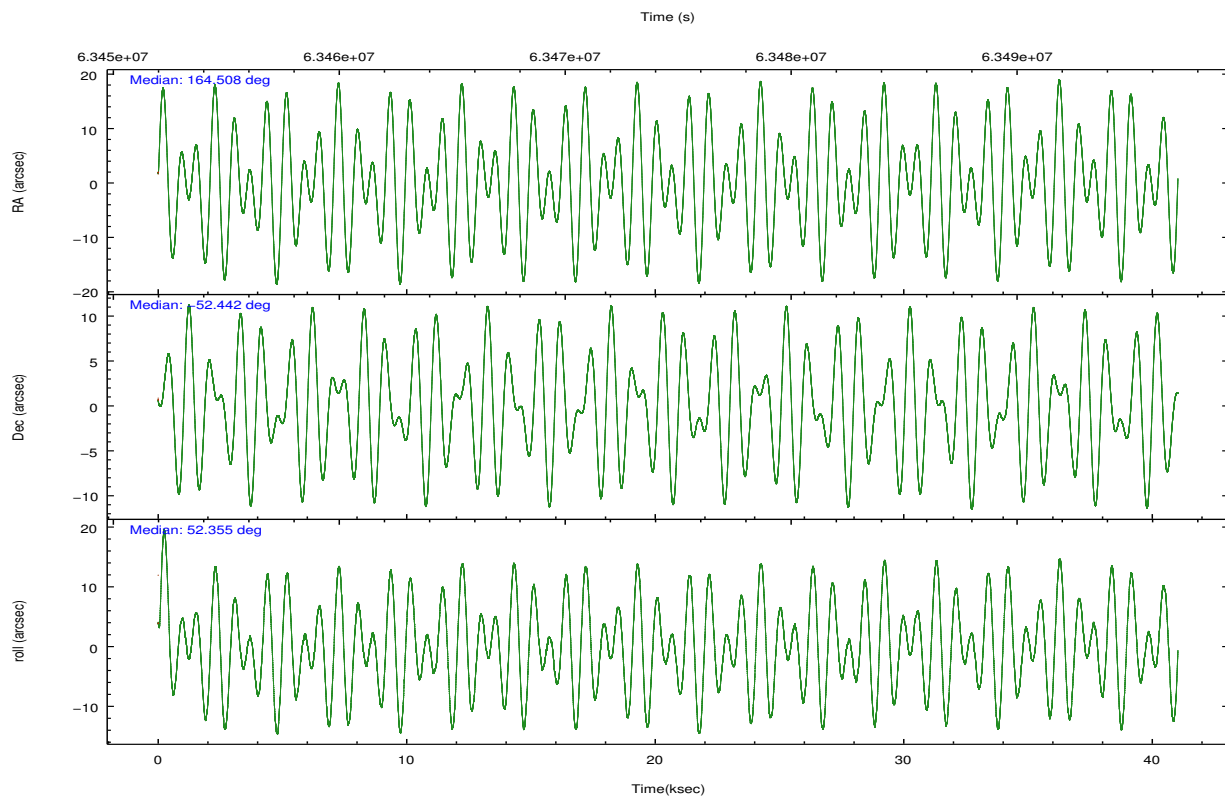
	ccd 5	ccd 6	ccd 7	ccd 8	ccd 9
grade 0 events	552016	4047	31792	16206	4879
	60%	8%	18%	18%	10%
grade 1 events	808	138	340	336	149
	0%	0%	0%	0%	0%
grade 2 events	234661	12059	35143	22012	11280
	25%	25%	20%	24%	23%
grade 3 events	9639	8640	13457	12095	7895
	1%	18%	7%	13%	16%
grade 4 events	8731	8033	12569	11743	8373
	0%	17%	7%	13%	17%
grade 5 events	17613	6667	19808	10117	7161
	1%	14%	11%	11%	15%
grade 6 events	89146	6843	61895	17505	7327
	9%	14%	35%	19%	15%
grade 7 events	0	0	0	0	0
	0%	0%	0%	0%	0%

2.2 Compared Parameters

Parameter	Planned	Actual	Parameter	Planned	Actual
Instrument	ACIS	ACIS	Obspar format version number	6	6
Detector	ACIS-56789	ACIS-56789	Obspar file type	PREDICTED	ACTUAL
Grating	NONE	NONE	Obspar update status	NONE	UPDATED
Data mode	CC33_FAINT	CC33_FAINT	Number of optional ACIS chips dropped	0	0
Observation mode	POINTING	POINTING	On-chip summing requested	N	N
Pointing RA	164.501393	164.5074513648529	Subarray requested	NONE	NONE
Pointing Dec	-52.469499	-52.44223709557942	Alternating exposures requested	N	N
Pointing Roll	52.196814	52.35825397646408	Primary exposure time	0.000000	0
SIM focus pos (mm)	-0.684267	-0.6828225247311905			
SIM defocus (mm)	0	0.001444936568705701			
SIM translation stage pos (mm)	-190.132523	-190.1400660498719			
SIM translation stage offset (mm)	0	0.00754346686406393			
Observation start time	63454524.184000	63453664.874226			
Observation start date	2000-01-05T10:14:20	2000-01-05T10:01:04			
Observation end time	63495067.184000	63495201.463232			
Observation end date	2000-01-05T21:30:03	2000-01-05T21:33:21			
Read mode	CONTINUOUS	CONTINUOUS			

2.3 Aspect



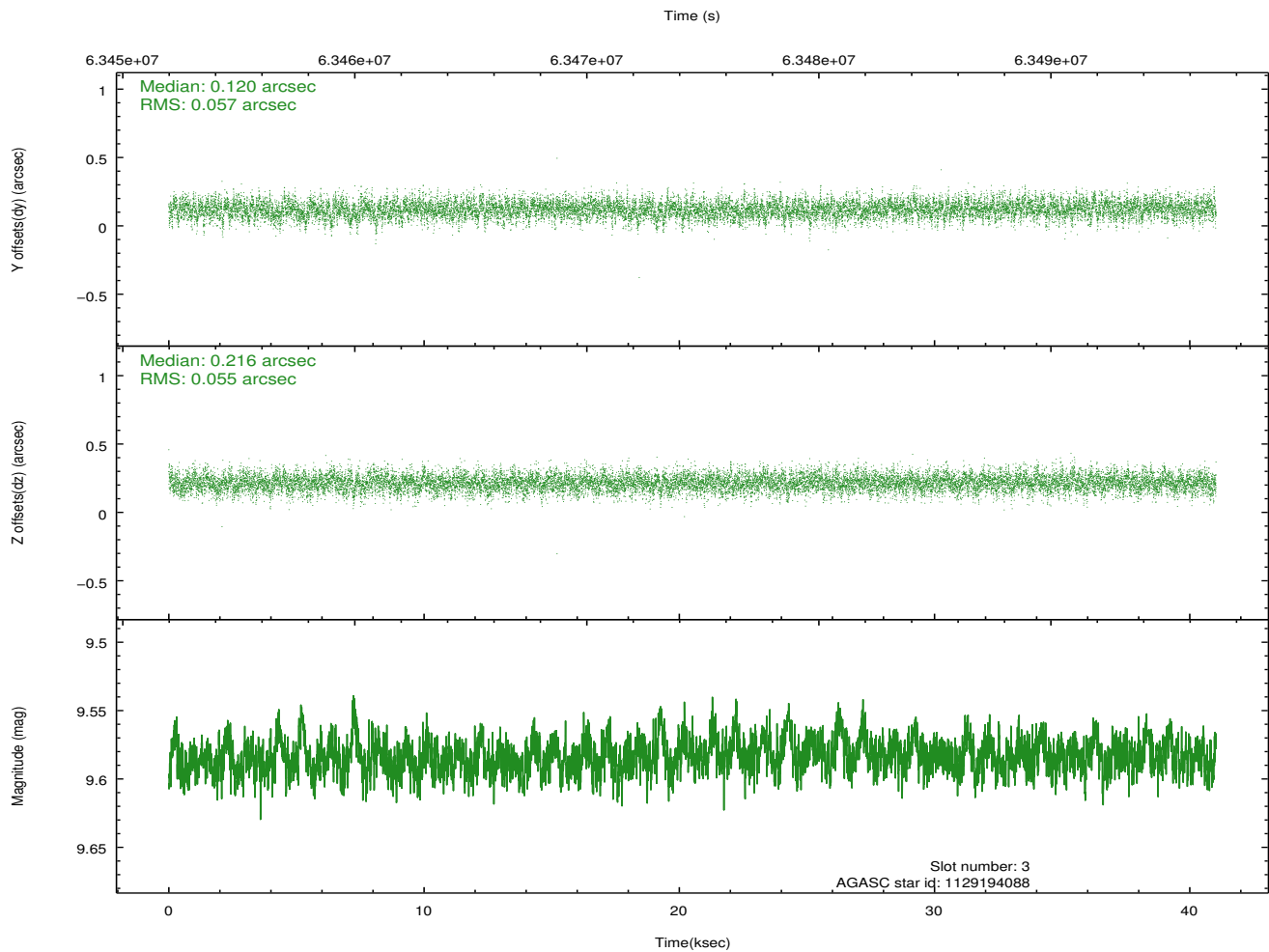
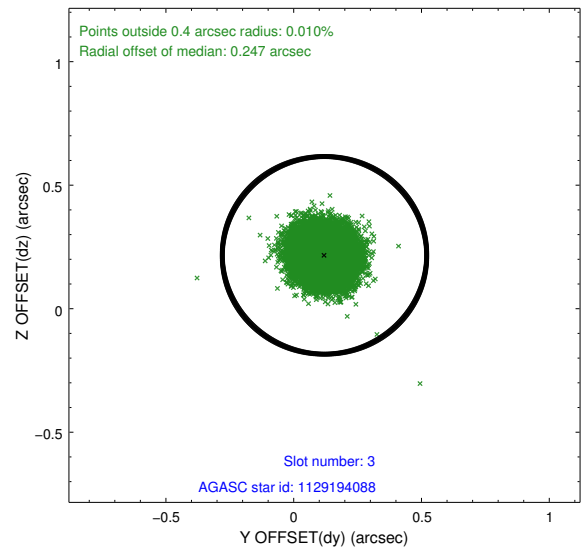
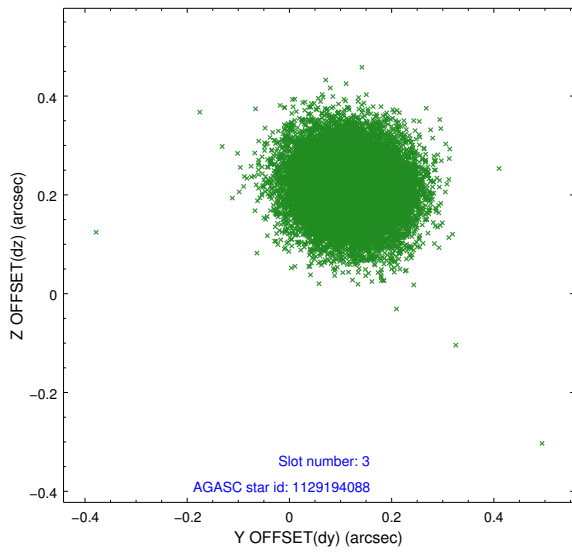


Slot Statistics

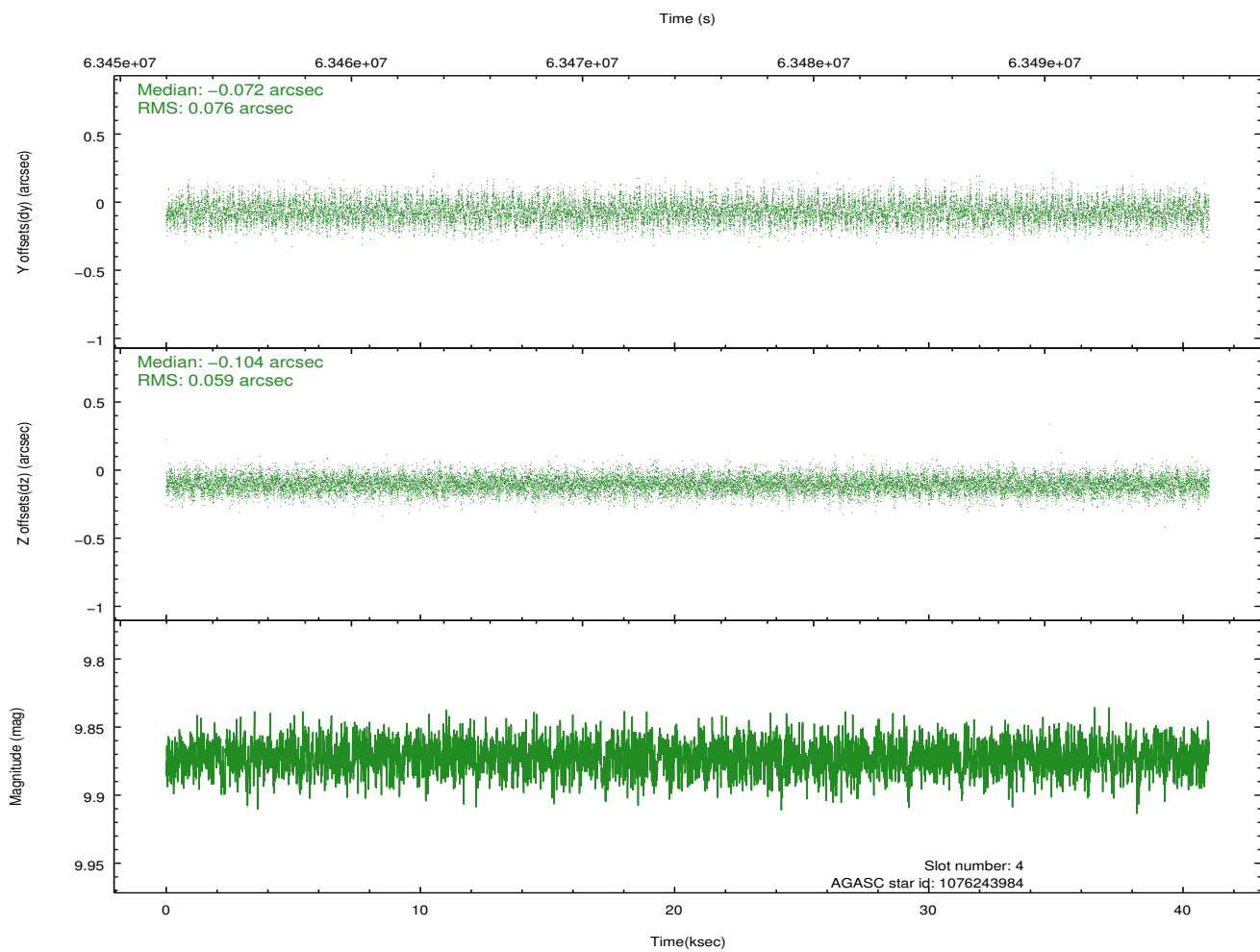
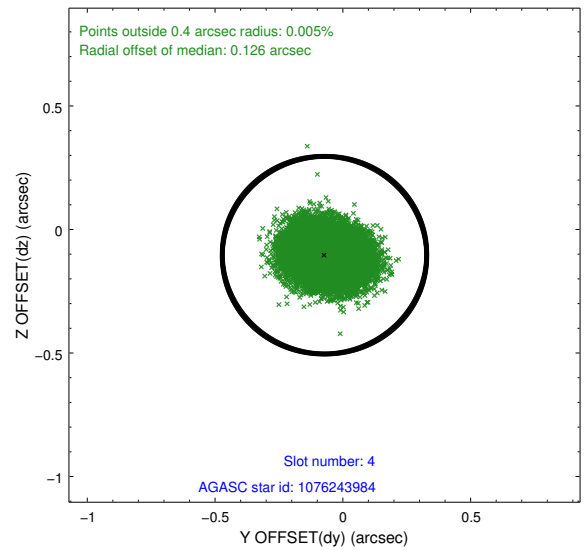
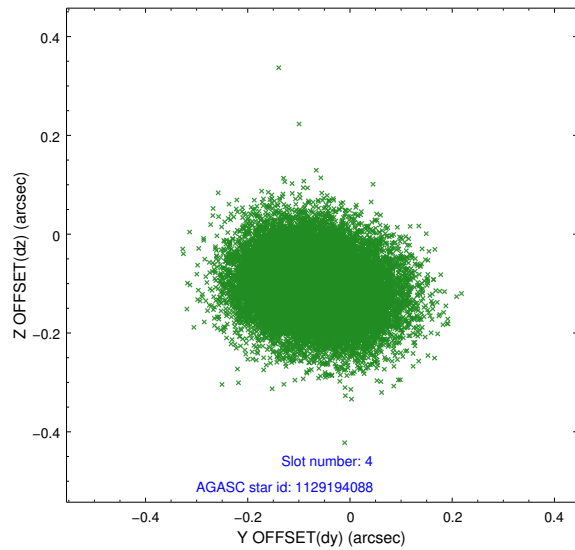
slot	status	id	mag	n_pts	med_dy	med_dz	dr1	dr2	ra	dec	mean_y	mean_z
0	FID	ACIS-S-2	7.11	20016	-0.001	-0.014	0.010	0.017	0.000000	0.000000	-753.56	-1724.69
1	FID	ACIS-S-4	7.21	20015	0.000	0.005	0.007	0.012	0.000000	0.000000	2159.81	183.79
2	FID	ACIS-S-5	7.24	20016	-0.031	0.018	0.010	0.018	0.000000	0.000000	-1806.46	177.52
3	GUIDE	1129194088	9.58	19995	0.120	0.216	0.085	0.138	164.523991	-53.025749	-1552.47	-1265.32
4	GUIDE	1076243984	9.87	19989	-0.072	-0.104	0.102	0.166	164.463022	-51.952350	1418.19	1209.00
5	GUIDE	1076234344	9.43	19996	-0.070	0.098	0.077	0.127	164.887269	-52.498727	433.08	-733.22
6	GUIDE	1076250048	9.25	19998	-0.141	-0.152	0.094	0.153	164.348881	-51.827677	1616.77	1684.75
7	GUIDE	1129197696	9.45	20003	0.161	-0.056	0.081	0.132	164.308240	-53.056065	-1925.19	-963.89

2.4 Star Slots

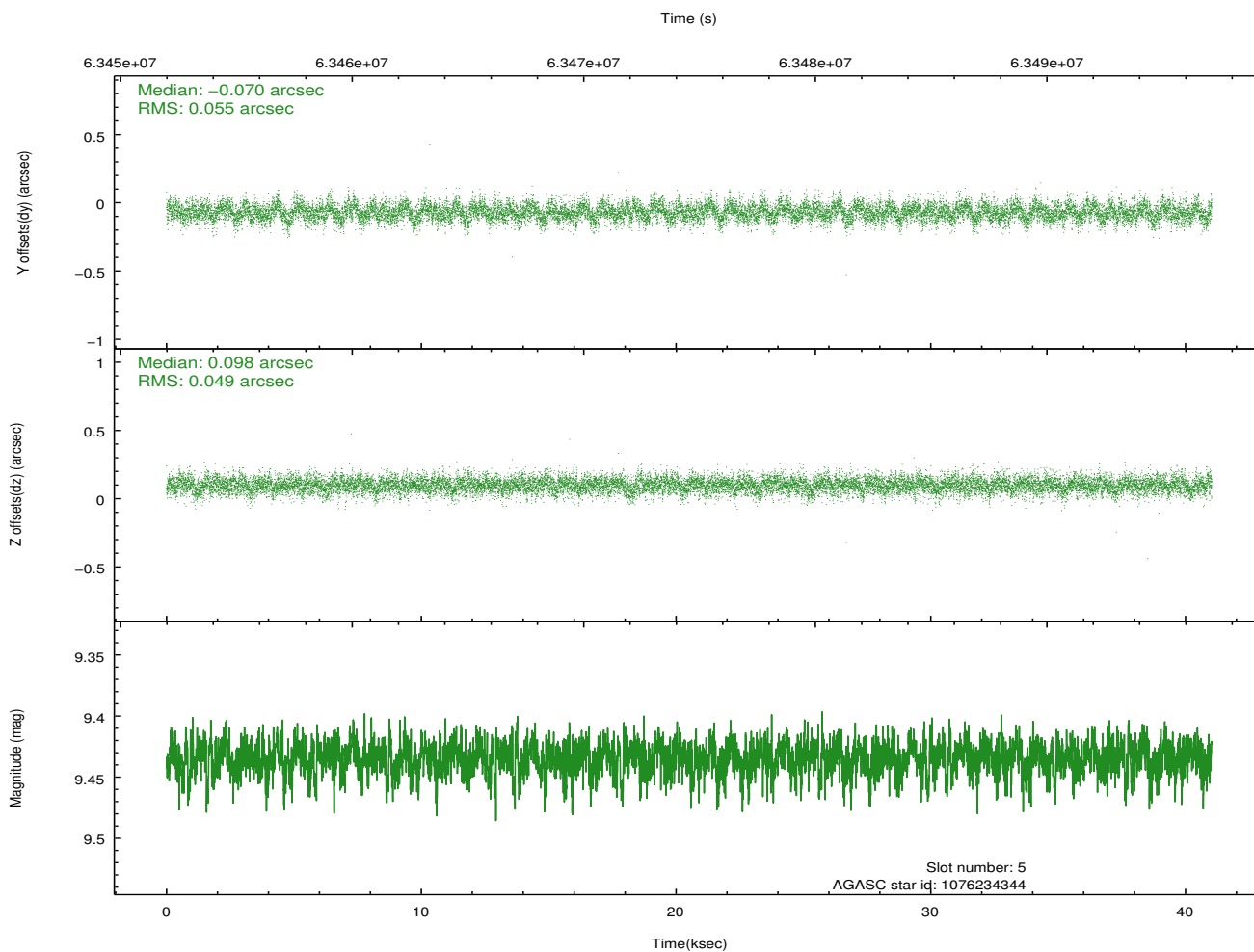
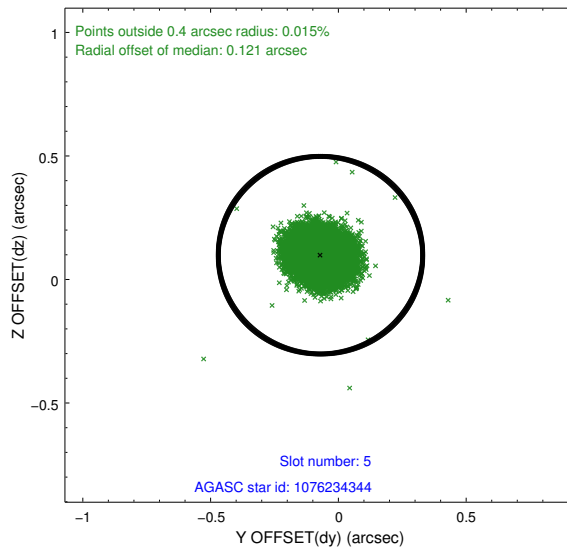
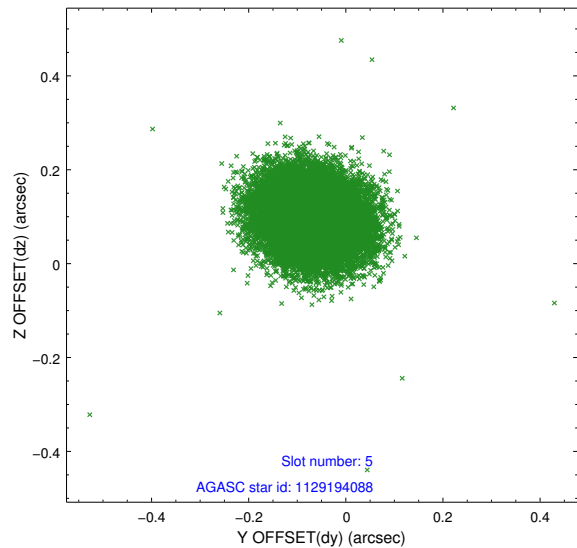
2.4.1 Slot 3



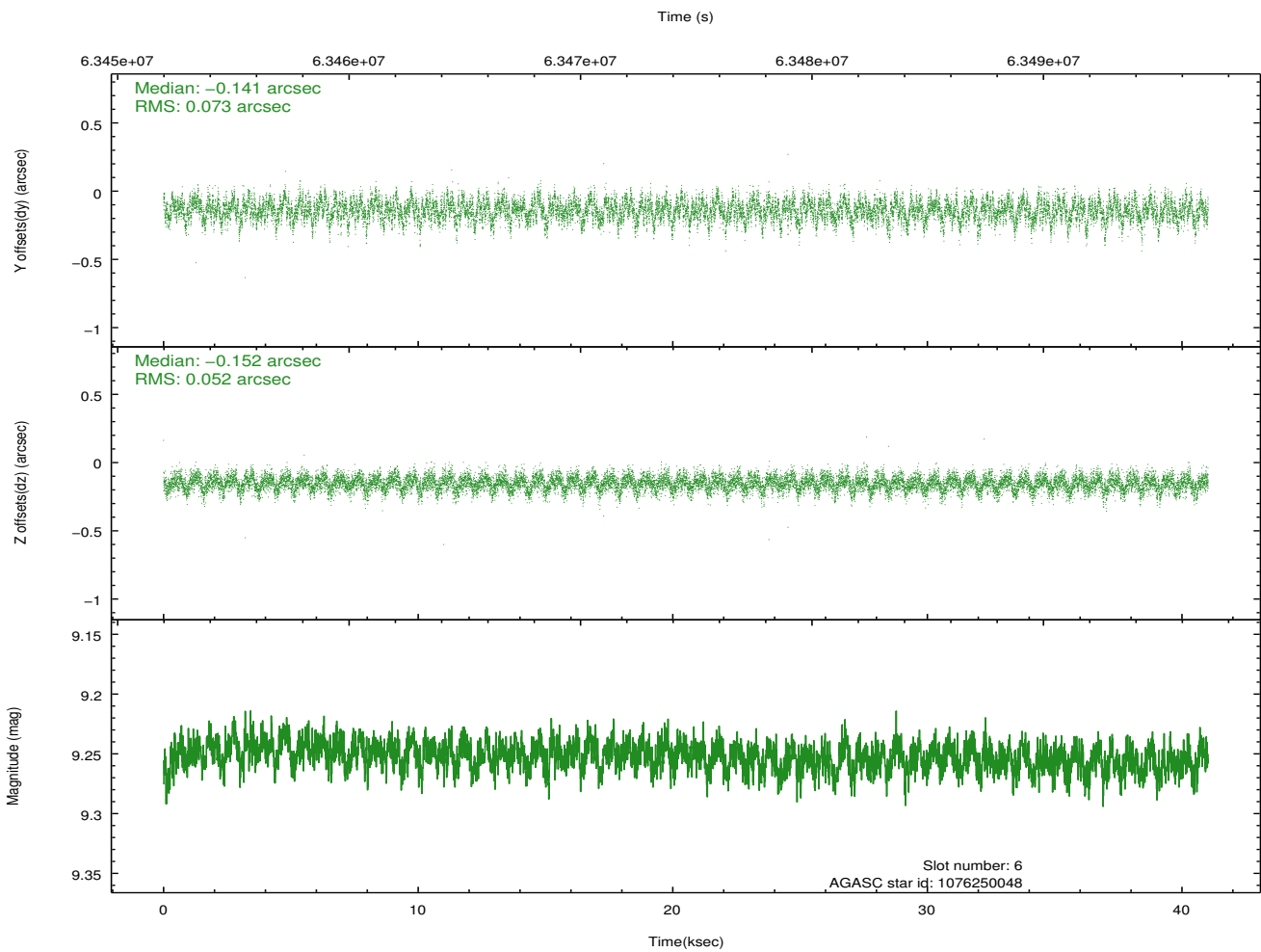
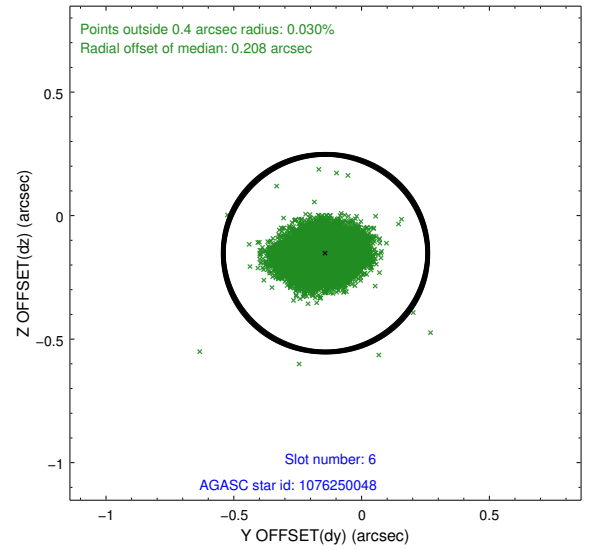
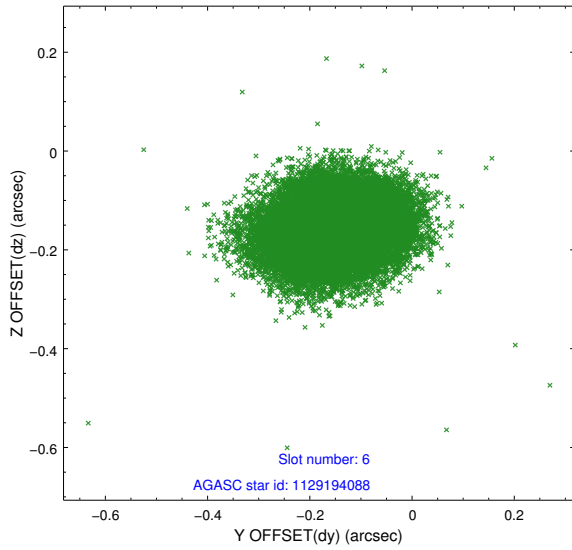
2.4.2 Slot 4



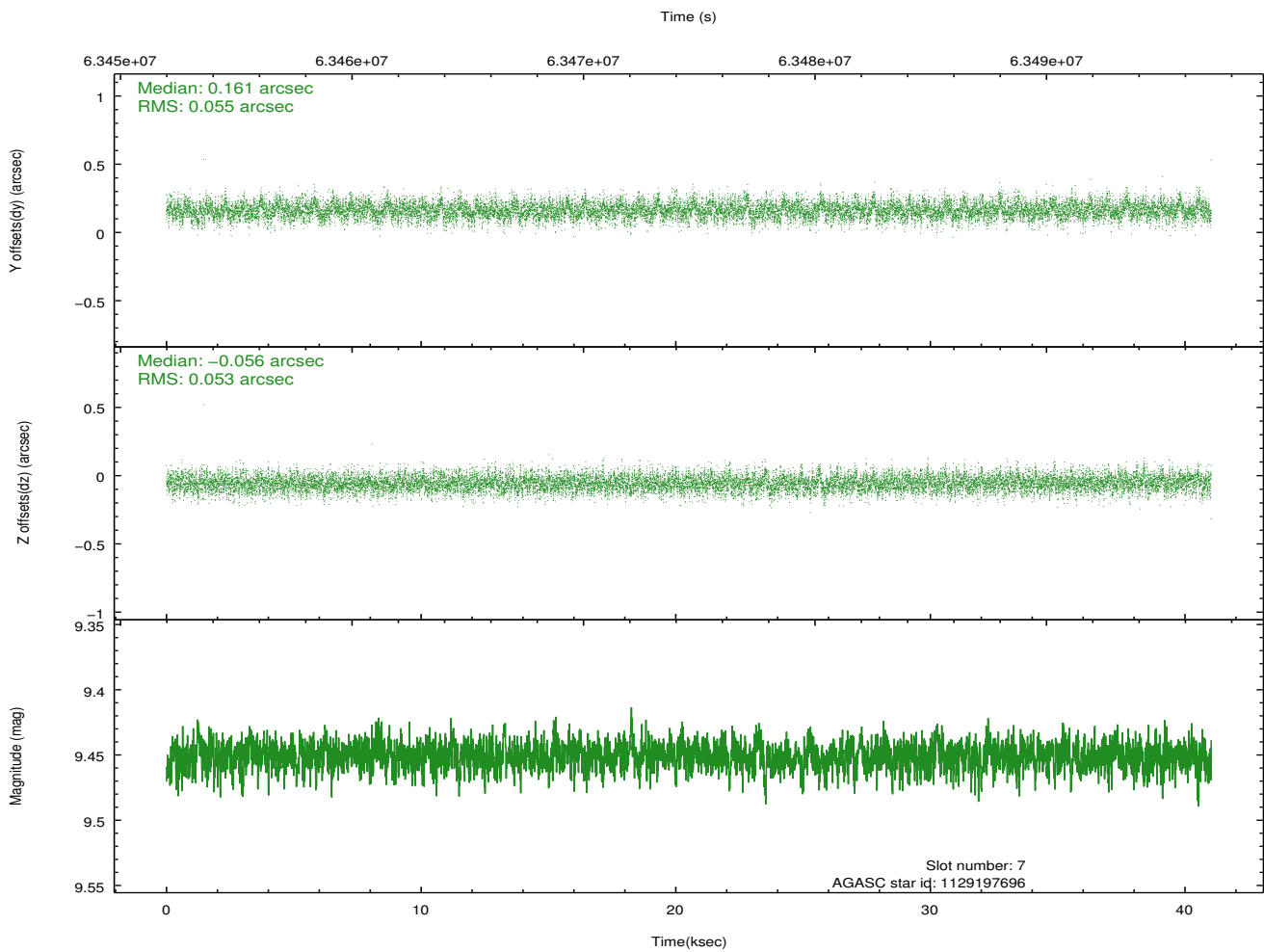
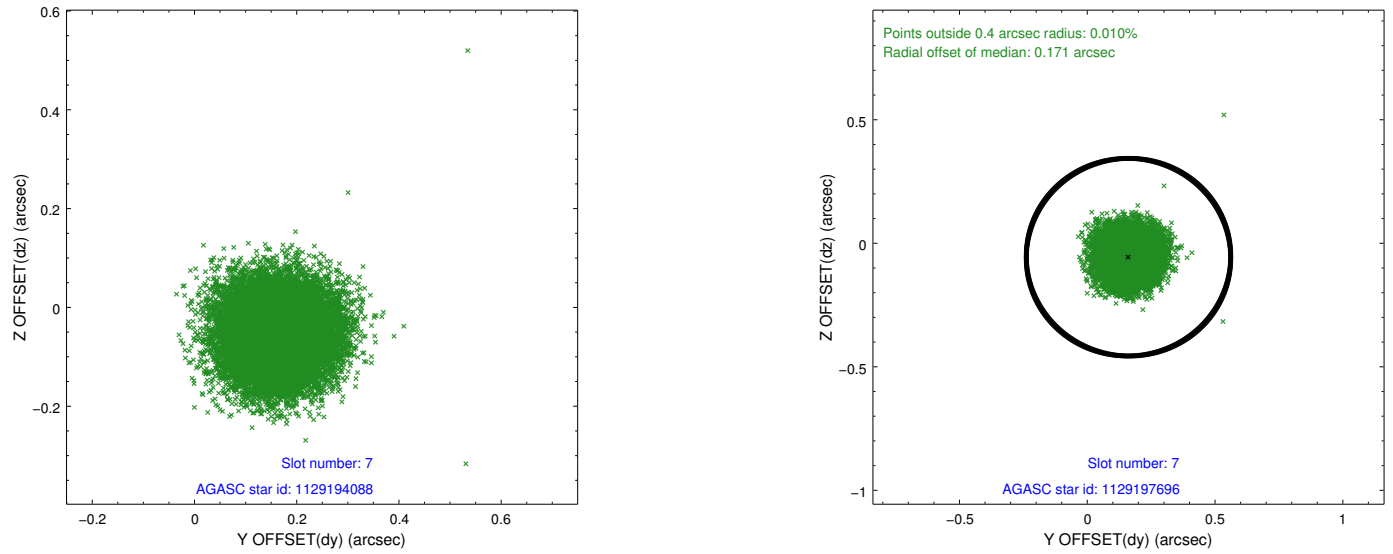
2.4.3 Slot 5



2.4.4 Slot 6

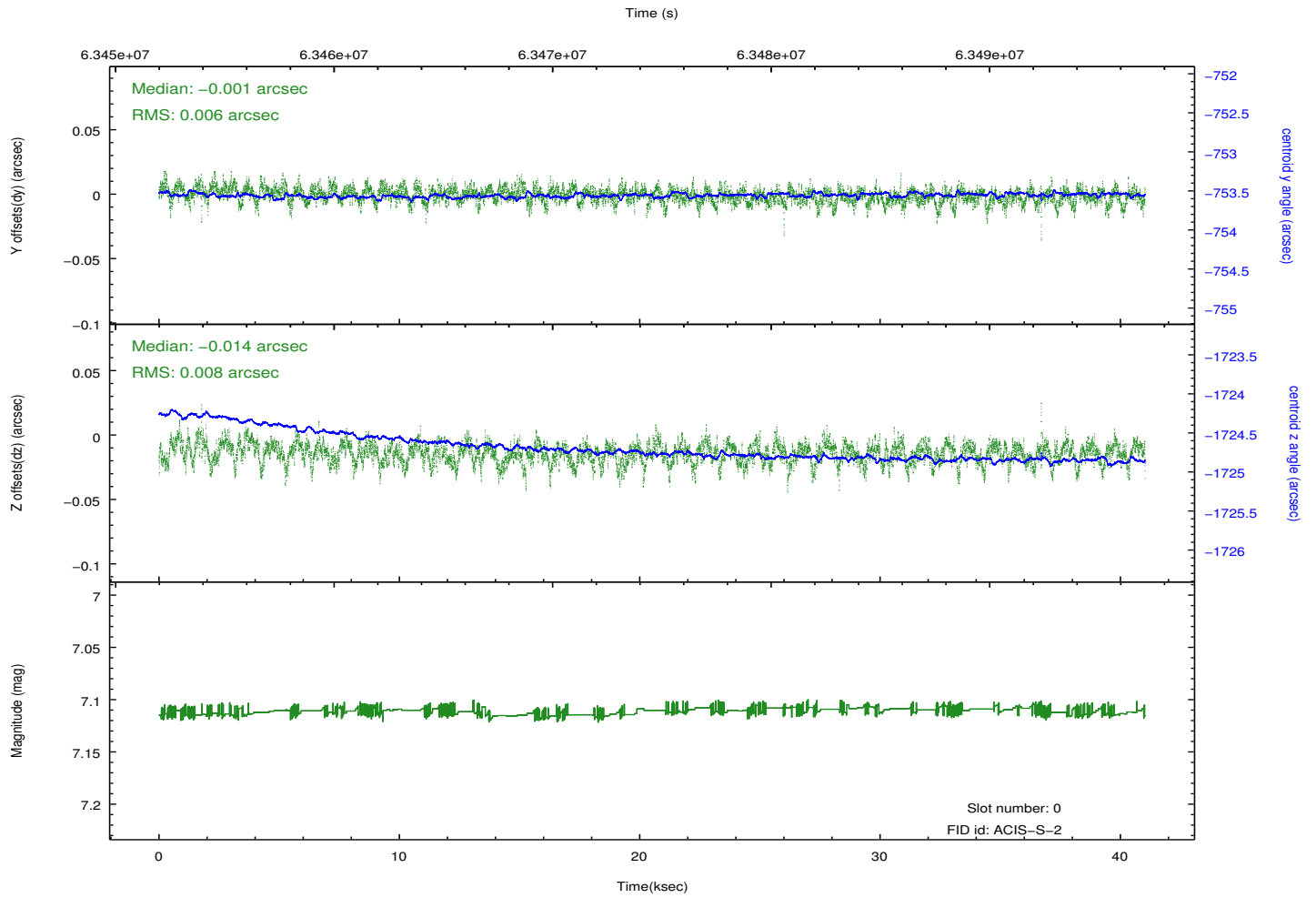
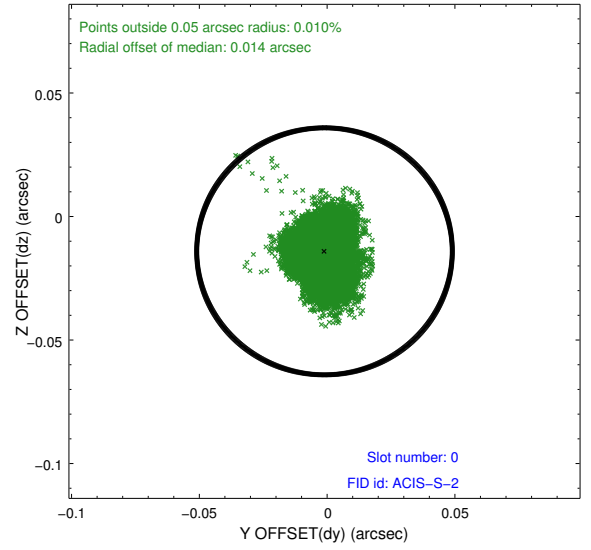
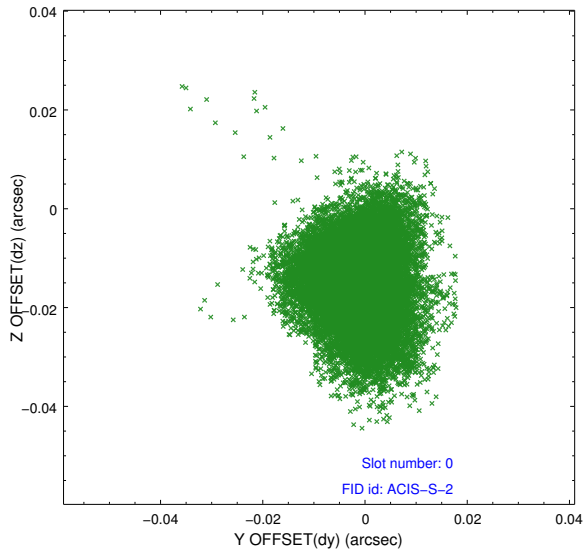


2.4.5 Slot 7

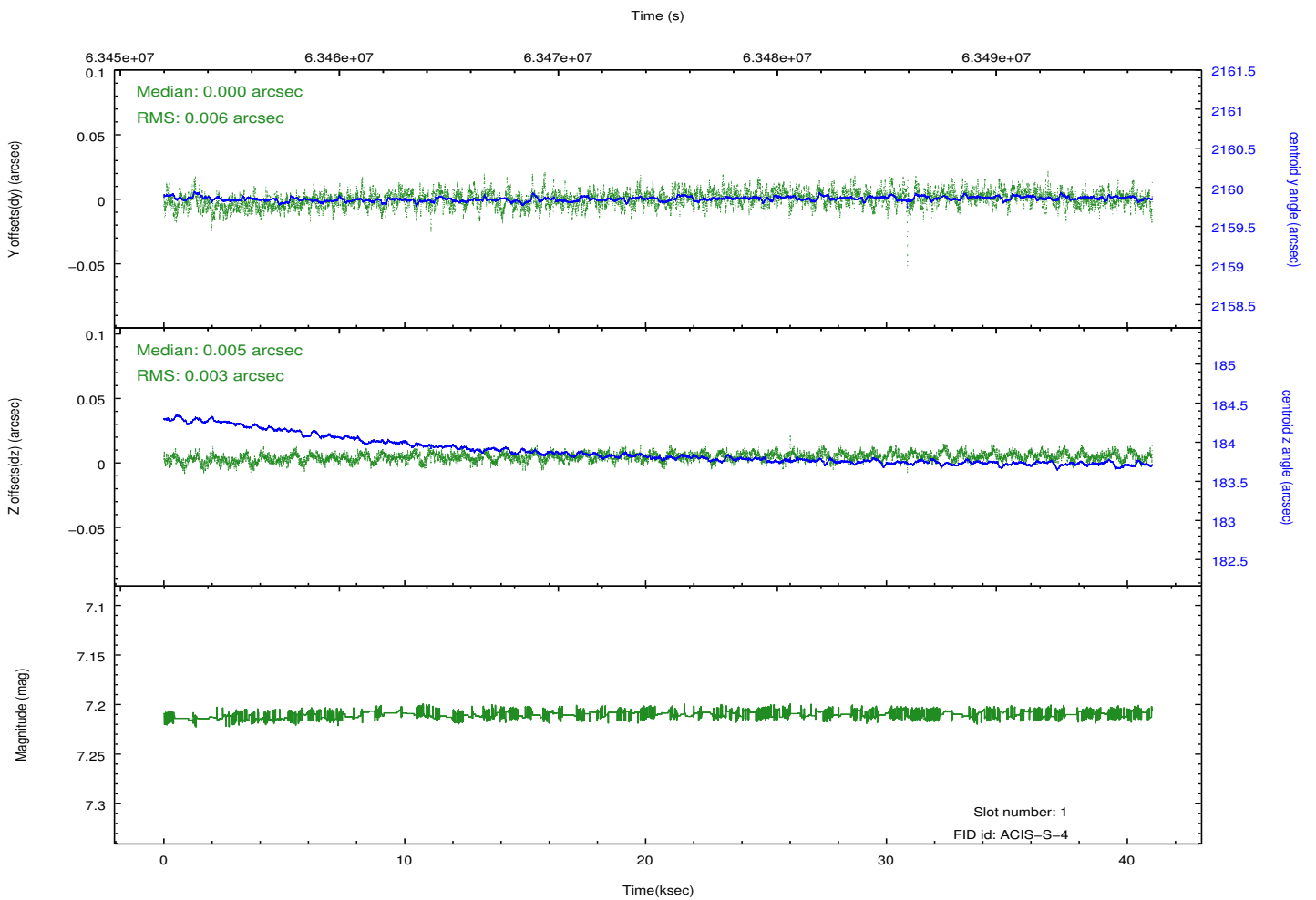
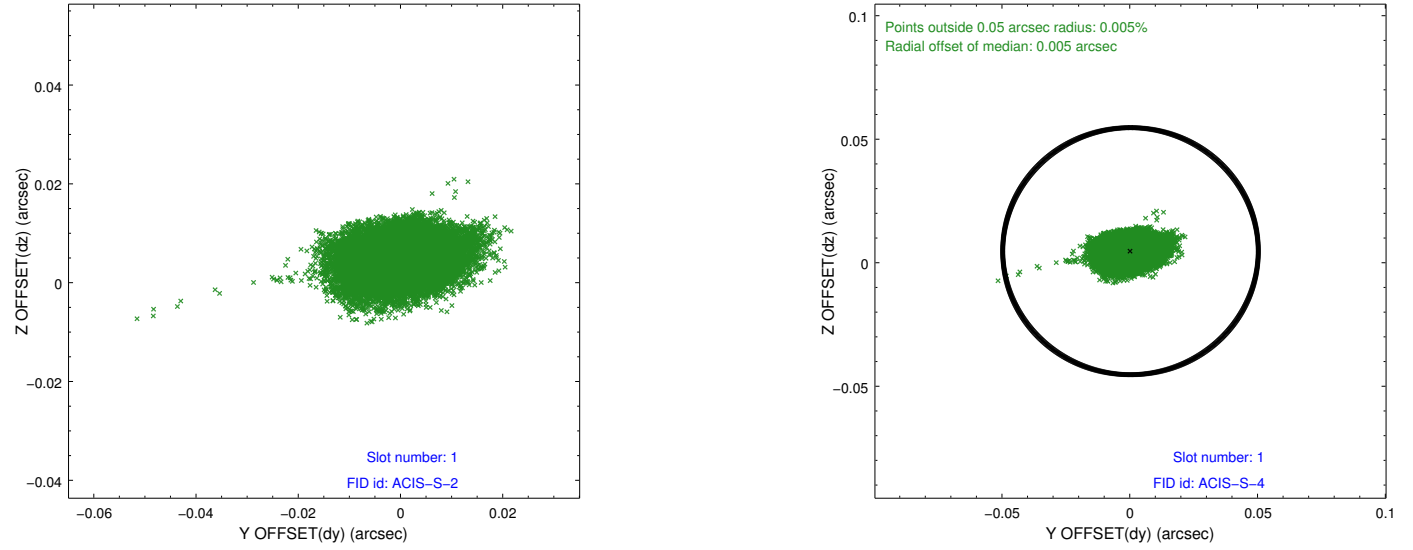


2.5 FID Slots

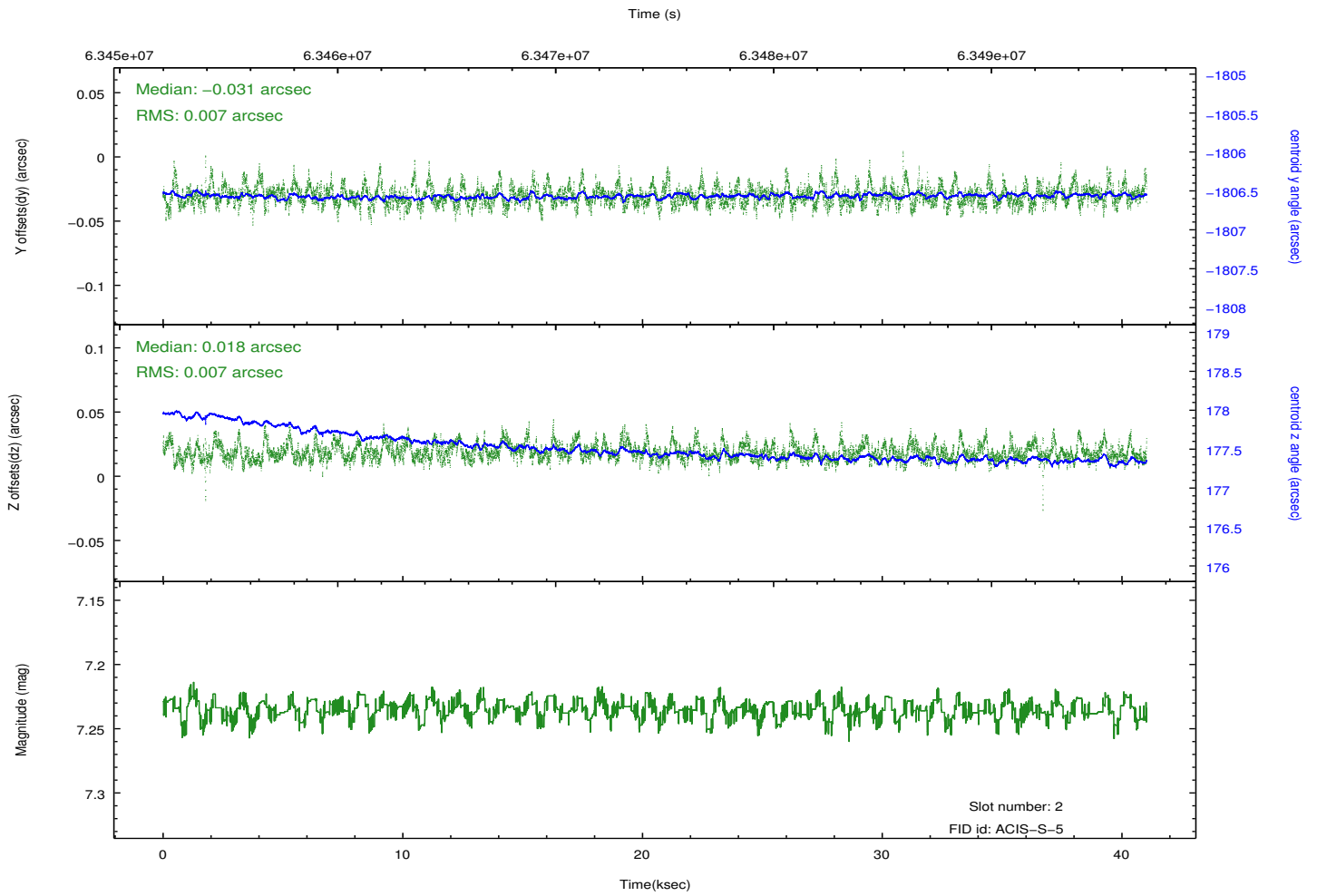
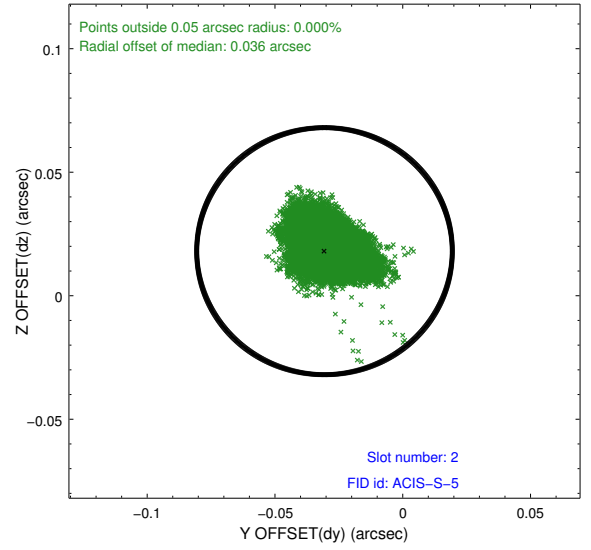
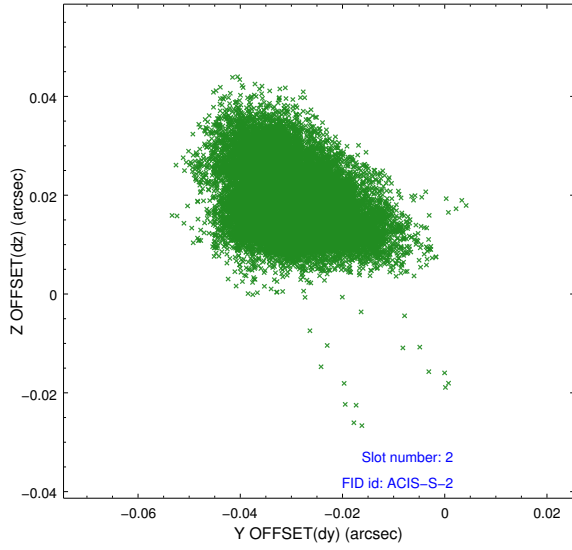
2.5.1 Slot 0



2.5.2 Slot 1



2.5.3 Slot 2



A Summary

A.1 Status

V&V Scientist	Glenn Allen
V&V Date (YYYY-MM-DD)	2009.12.01
V&V Edition	1
V&V Disposition and Status	OK
V&V Charge Time	40.724

A.2 Comments

Charge time:

Charge time for this ObsId remains at the original value of 40.724 ksec although the OnTime is now calculated to be 40.723 ks.