

V&V Reference Report

L2 ASCDS Version : 8.4.4

Observation 7772 - L2 Version 2
Chandra X-Ray Center

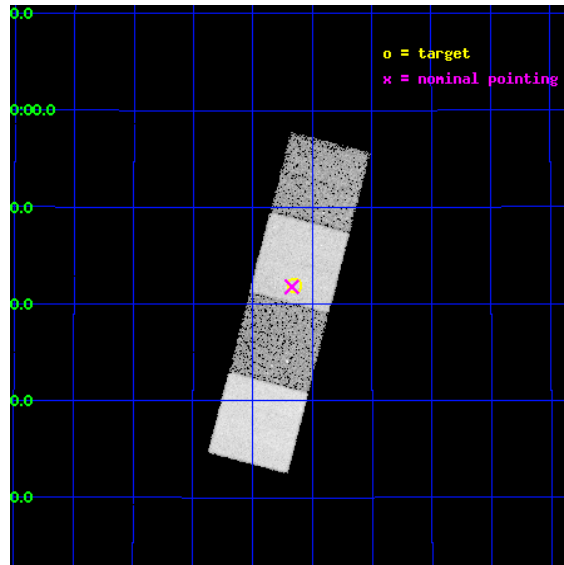
L2 Processing Date : Apr 30 2012

Contents

1	Front	2
2	OBI	3
2.1	OBI	3
2.1.1	Images	3
2.1.2	Bias	3
2.1.3	Parameters	4
2.1.4	Events	4
2.2	Compared Parameters	5
2.3	Aspect	6
2.4	Star Slots	9
2.4.1	Slot 3	9
2.4.2	Slot 4	10
2.4.3	Slot 5	11
2.4.4	Slot 6	12
2.4.5	Slot 7	13
2.5	FID Slots	14
2.5.1	Slot 0	14
2.5.2	Slot 1	15
2.5.3	Slot 2	16
A	Summary	17
A.1	Status	17
A.2	Comments	17

1 Front

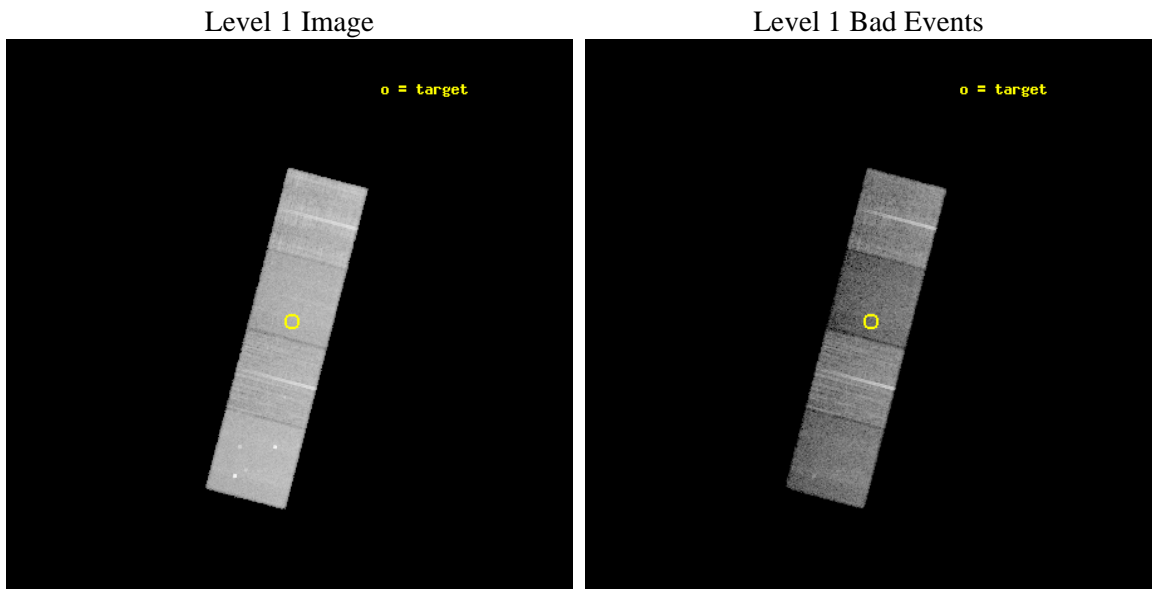
seq_num	701440	Sequence number
obs_id	7772	Observation id
title	Are Compton-thick quasars hidden among the population of heavily obscured Spitzer-selected AGN?	Proposal title
observer	Dr Cristian Vignali	Principal investigator
object	SST24 J143539.34+334159.1	Source name
dtcycle	0	
cycle	P	events from which exps? Prim/Second/Both
ra_targ	218.91375	Observer's specified target RA [deg]
dec_targ	33.69975	Observer's specified target Dec [deg]
ra_nom	218.91798882575	Nominal RA [deg]
dec_nom	33.696379686186	Nominal Dec [deg]
roll_nom	284.62510918489	Nominal Roll [deg]
revision	2	Processing version of data
ontime	15159.000116587	Sum of GTIs [s]
livetime	14960.93662017	Livetime [s]
ontime5	15159.000116587	Sum of GTIs [s]
ontime6	15155.859156251	Sum of GTIs [s]
ontime7	15159.000116587	Sum of GTIs [s]
ontime8	15159.000116587	Sum of GTIs [s]
l2events	142558	Number of level 2 events



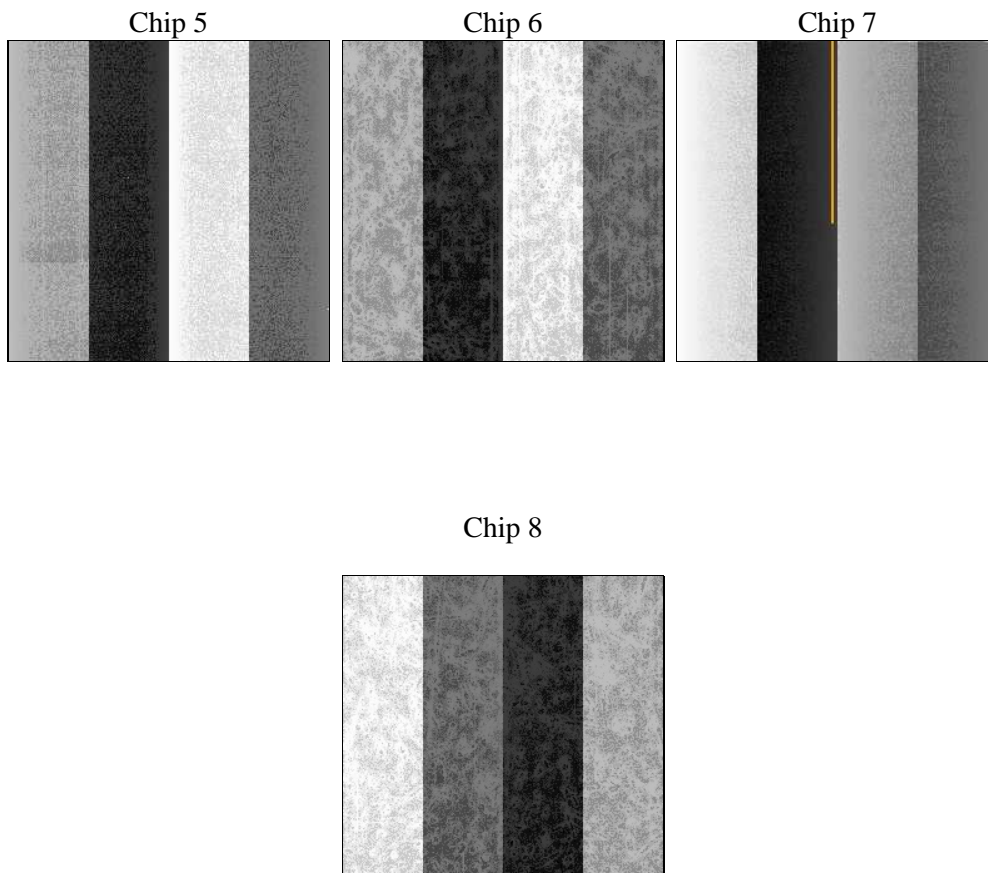
2 OBI

2.1 OBI

2.1.1 Images



2.1.2 Bias



2.1.3 Parameters

obi_num	0	Obi number	sched_exp_time	15000.000000	[s] Scheduled observation exposure time
ascdsver	8.4.4	Processing system revision	ontime	15159.000116587	Sum of GTIs [s]
caldsver	4.4.9	 	ontime5	15159.000116587	Sum of GTIs [s]
date	2012-04-30T13:44:36	Date and time of file creation	ontime6	15155.859156251	Sum of GTIs [s]
revision	2	Processing version of data	ontime7	15159.000116587	Sum of GTIs [s]
			ontime8	15159.000116587	Sum of GTIs [s]
			l1events	552938	Number of level 1 events

2.1.4 Events

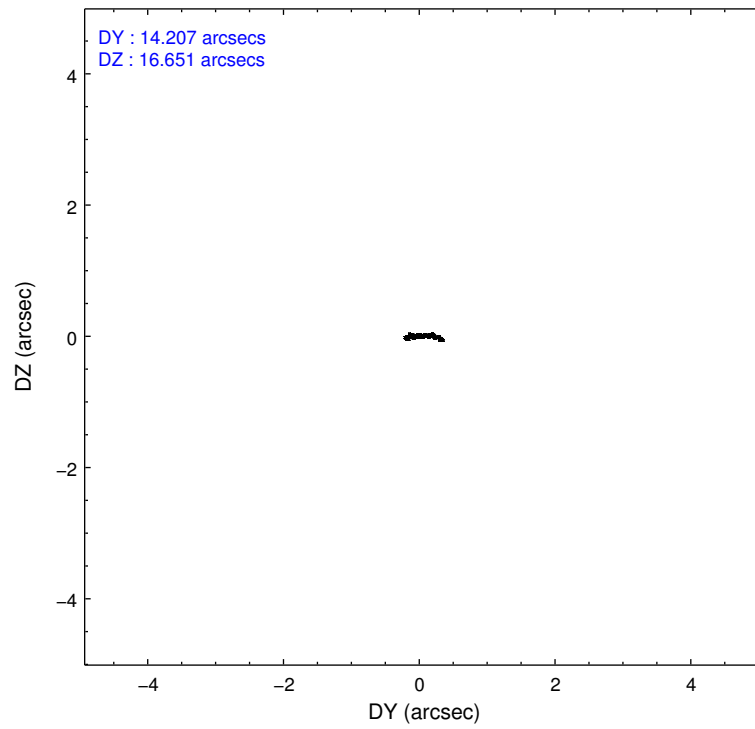
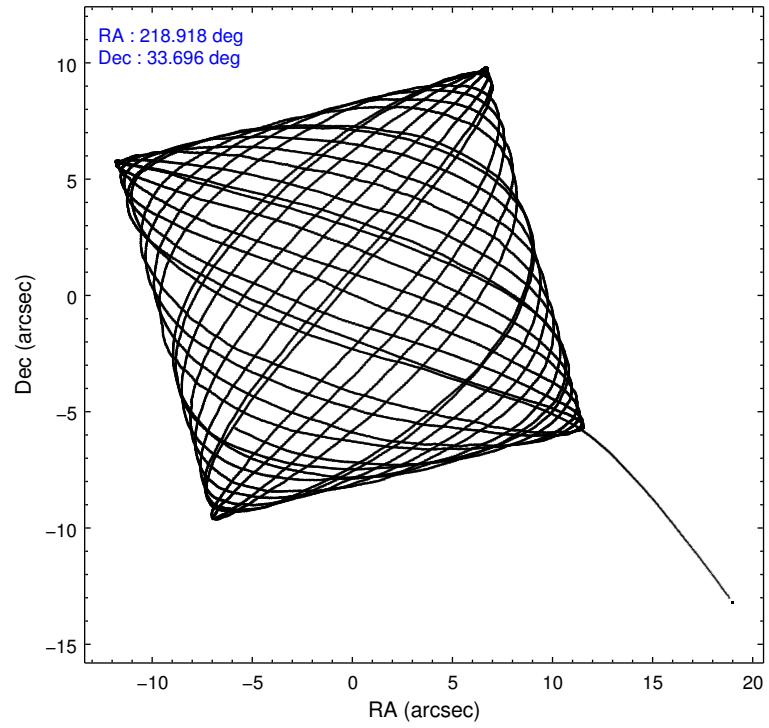
	ccd 5	ccd 6	ccd 7	ccd 8
level 1 events	155494	124703	117677	155064
rejected events	79184	113051	64258	119539
rejected %	50%	90%	54%	77%

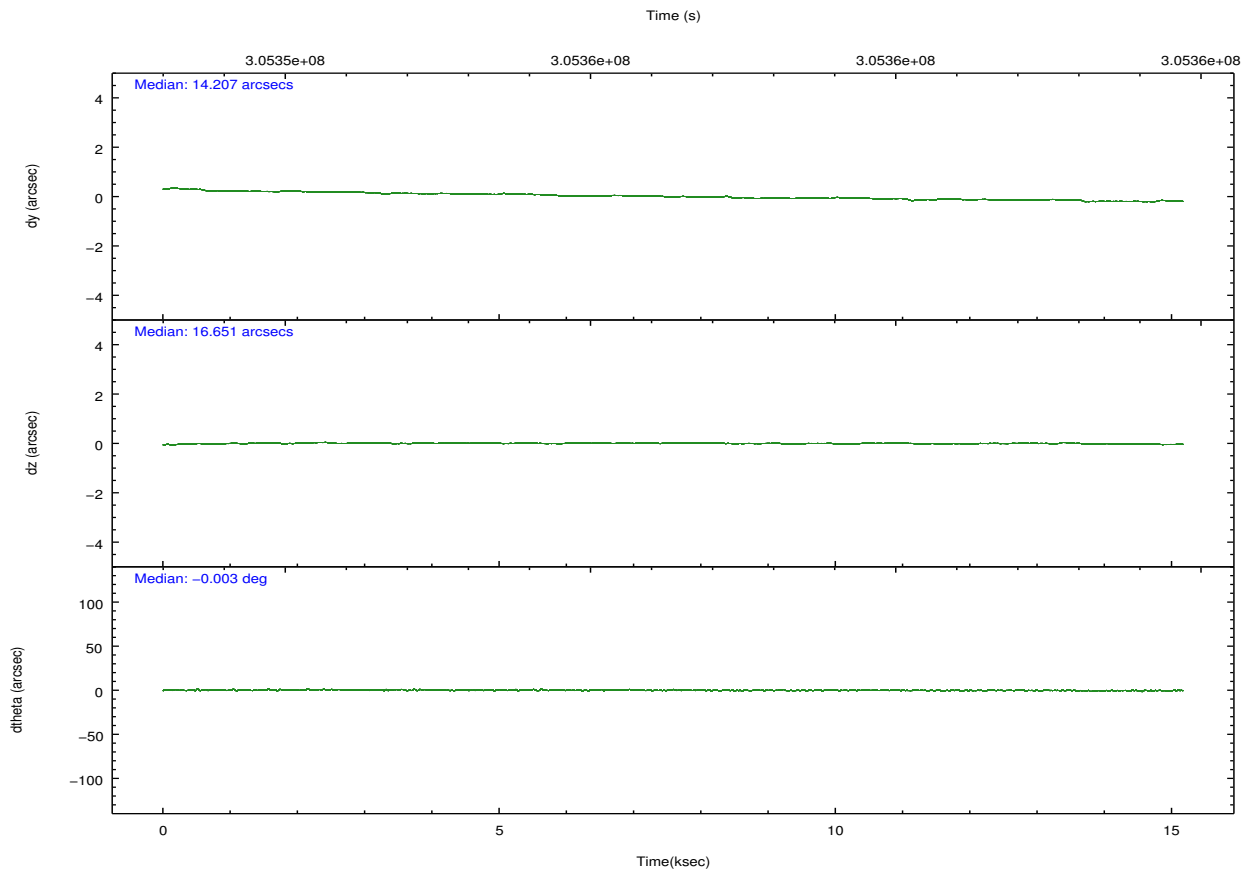
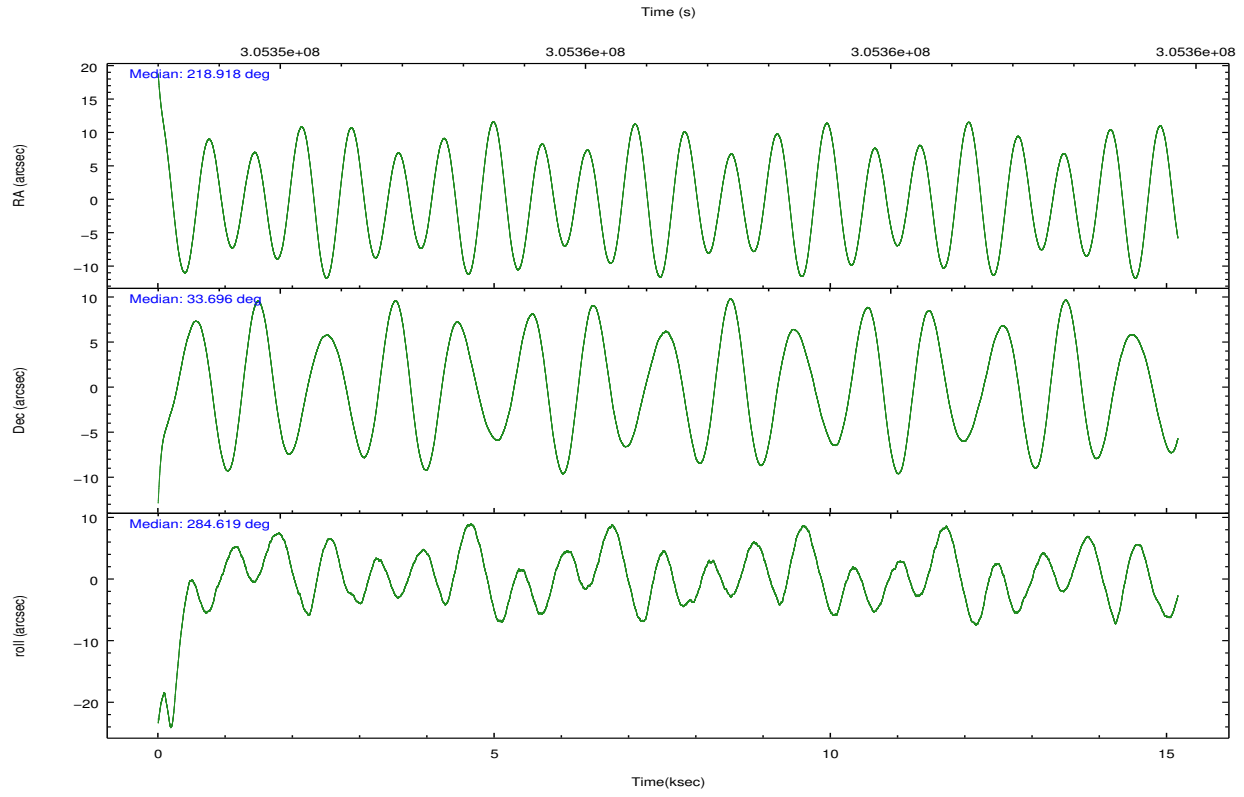
	ccd 5	ccd 6	ccd 7	ccd 8
grade 0 events	10709	4751	6093	10685
	6%	3%	5%	6%
grade 1 events	470	46	186	151
	0%	0%	0%	0%
grade 2 events	24872	2773	12345	9020
	15%	2%	10%	5%
grade 3 events	3764	1364	5396	4373
	2%	1%	4%	2%
grade 4 events	3534	1361	5562	4165
	2%	1%	4%	2%
grade 5 events	12620	4136	12725	6506
	8%	3%	10%	4%
grade 6 events	40617	2510	28814	10430
	26%	2%	24%	6%
grade 7 events	58908	107762	46556	109734
	37%	86%	39%	70%

2.2 Compared Parameters

Parameter	Planned	Actual	Parameter	Planned	Actual
Instrument	ACIS	ACIS	Obspar format version number	7	7
Detector	ACIS-5678	ACIS-5678	Obspar file type	PREDICTED	ACTUAL
Grating	NONE	NONE	Obspar update status	NONE	UPDATED
Data mode	VFAINT	VFAINT	Number of optional ACIS chips dropped	0	0
Observation mode	POINTING	POINTING	On-chip summing requested	N	N
[deg] Pointing RA	218.894554	218.9179888257516	Subarray requested	NONE	NONE
[deg] Pointing Dec	33.715588	33.69637968618601	Alternating exposures requested	N	N
[deg] Pointing Roll	284.481488	284.6251091848904	[s] Primary exposure time	0.000000	3.1
[mm] SIM focus pos	-0.684267	-0.6828225247311905			
[mm] SIM defocus	0	0.001444936568705701			
[mm] SIM translation stage pos	-190.132523	-190.1400660498719			
[mm] SIM translation stage offset	0	0.00754346686406393			
[s] Observation start time (MET)	305348938.184000	305347323.37387			
Observation start date	2007-09-05T03:07:53	2007-09-05T02:42:03			
[s] Observation end time (MET)	305363938.184000	305364970.79972			
Observation end date	2007-09-05T07:17:53	2007-09-05T07:36:10			
Read mode	TIMED	TIMED			

2.3 Aspect



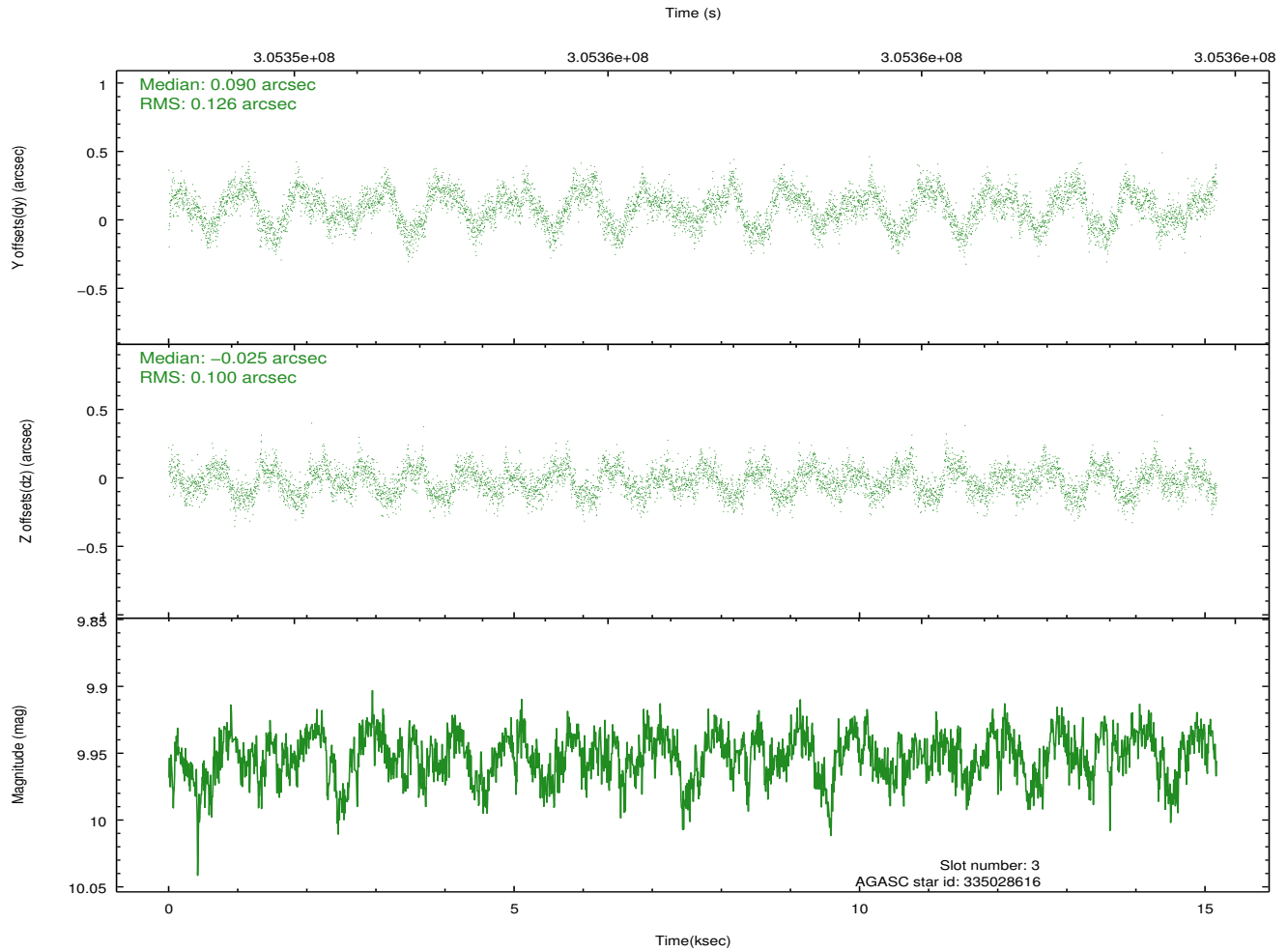
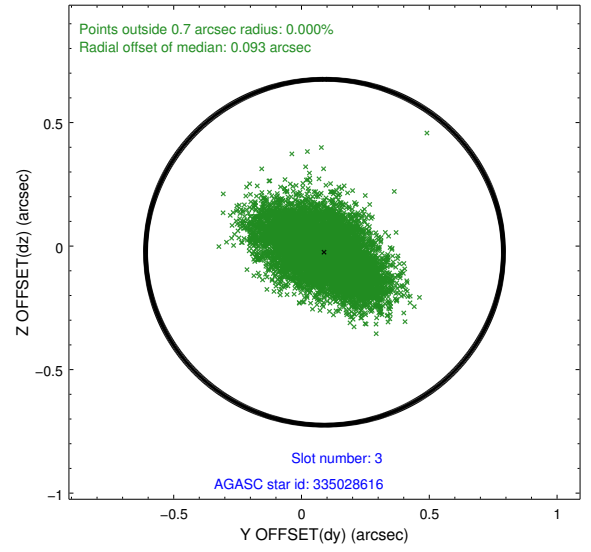
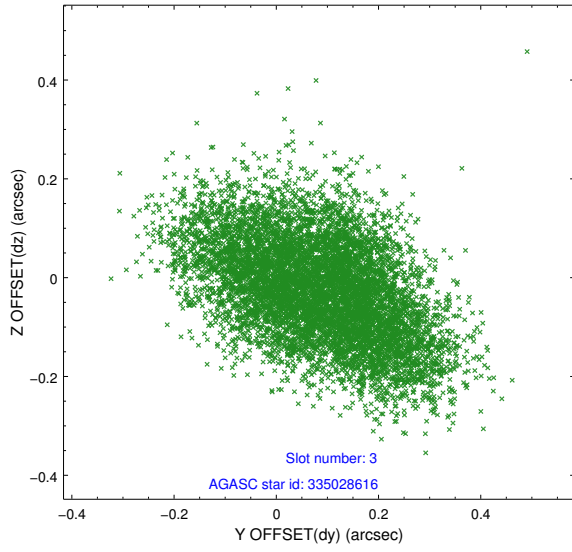


Slot Statistics

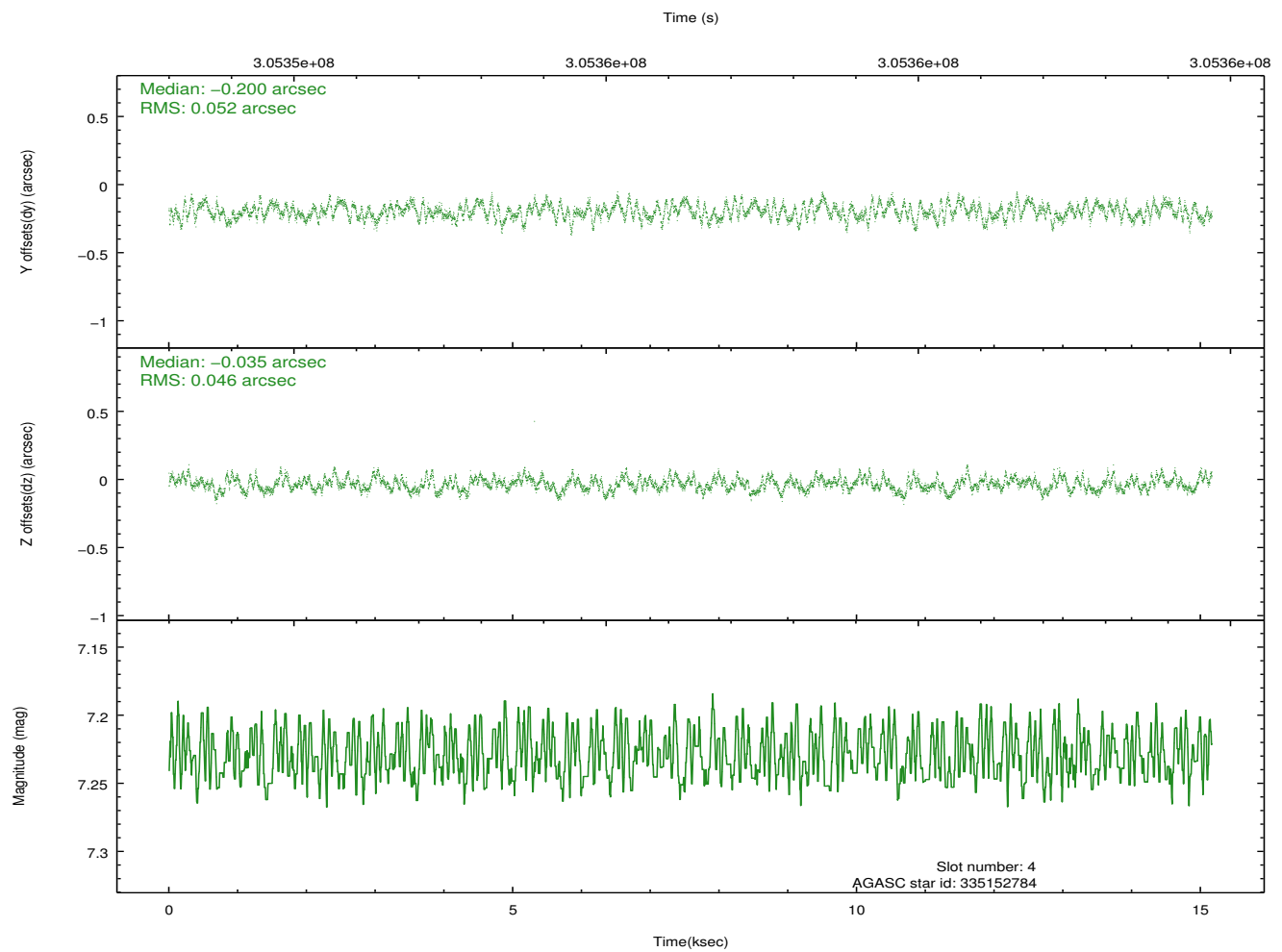
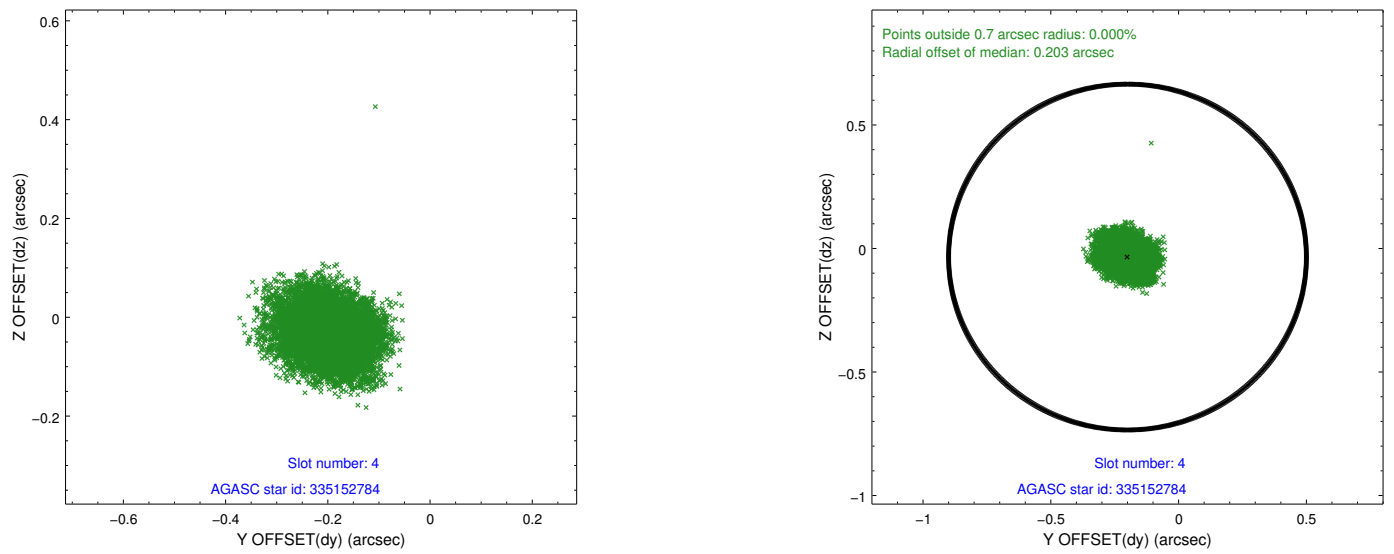
slot	status	id	mag	n_pts	med_dy	med_dz	dr1	dr2	ra	dec	mean_y	mean_z
0	FID	ACIS-S-2	7.09	3699	-0.059	-0.041	0.008	0.013	0.000000	0.000000	-767.25	-1738.10
1	FID	ACIS-S-4	7.18	3699	0.196	0.040	0.007	0.012	0.000000	0.000000	2146.17	170.11
2	FID	ACIS-S-5	7.22	3699	-0.168	0.010	0.007	0.011	0.000000	0.000000	-1819.80	164.14
3	GUIDE	335028616	9.95	7382	0.090	-0.025	0.170	0.279	218.529874	33.175085	1608.61	-1549.87
4	GUIDE	335152784	7.23	7398	-0.200	-0.035	0.076	0.116	219.280617	33.678221	417.80	1086.69
5	GUIDE	335154960	9.55	7376	0.111	-0.099	0.094	0.155	219.209961	33.303073	1675.08	549.17
6	GUIDE	335157088	9.07	7384	-0.086	0.072	0.090	0.155	219.274029	33.726909	243.09	1111.12
7	GUIDE	335025040	9.94	7385	0.087	0.089	0.121	0.202	218.601670	34.305240	-2273.89	-312.12

2.4 Star Slots

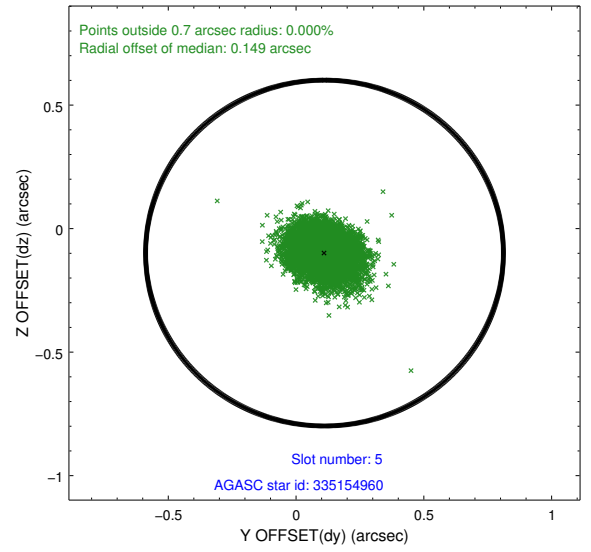
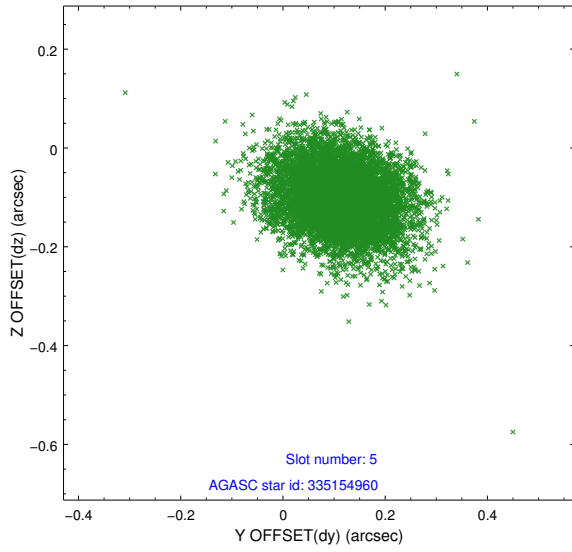
2.4.1 Slot 3



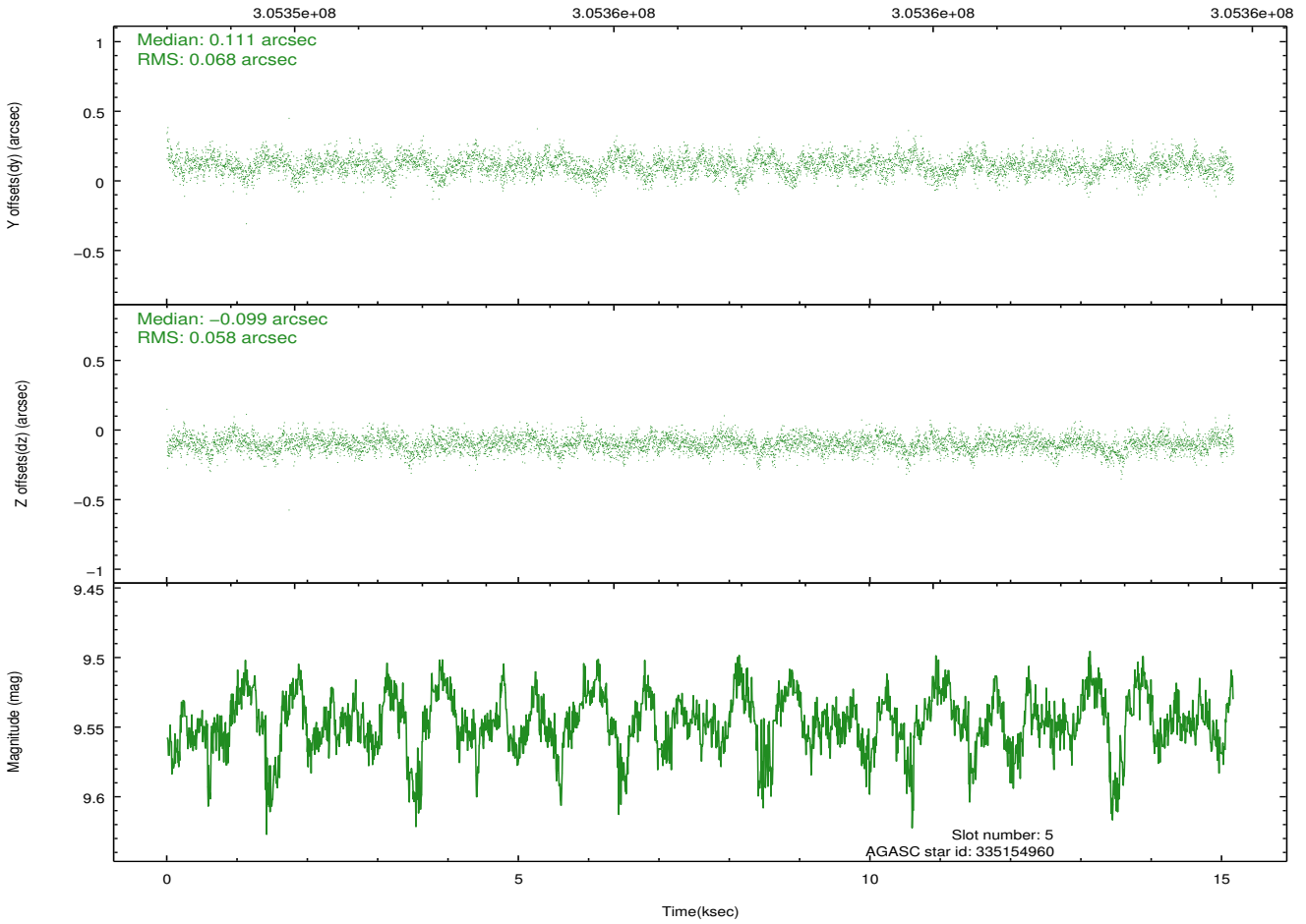
2.4.2 Slot 4



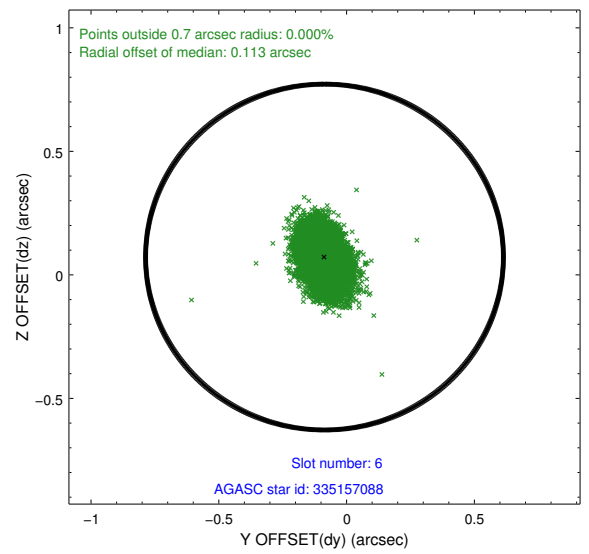
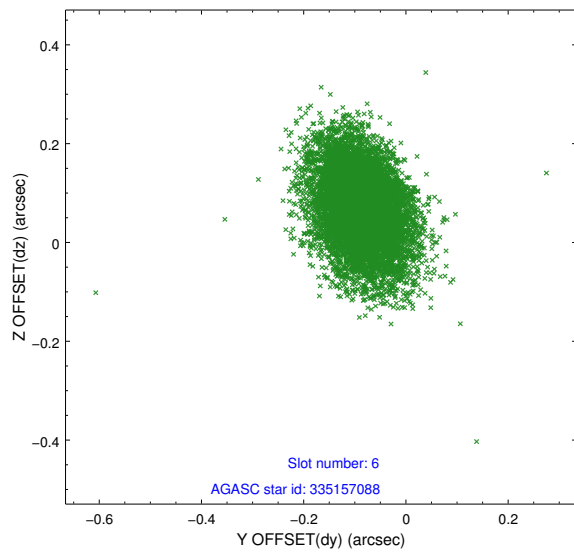
2.4.3 Slot 5



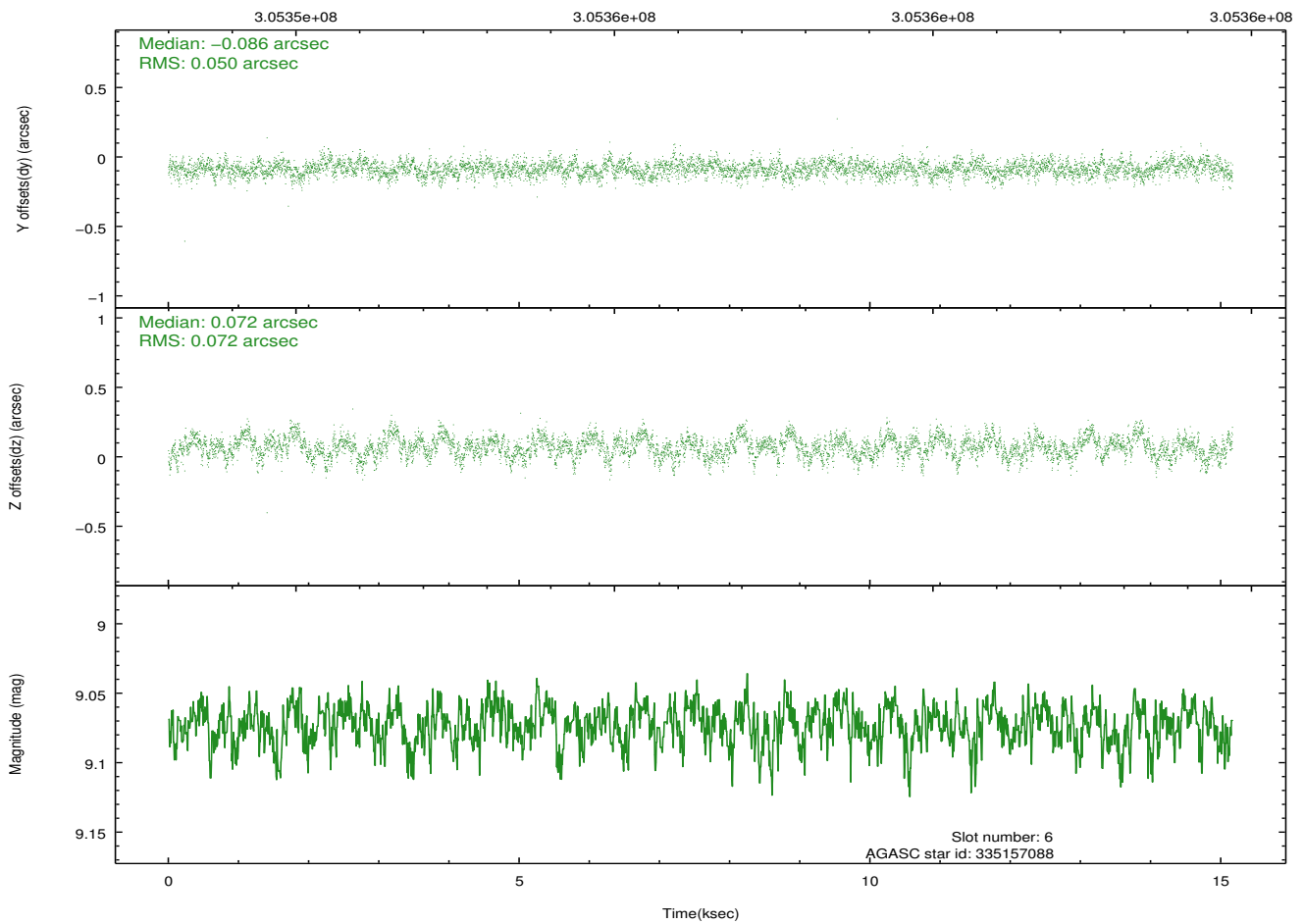
Time (s)



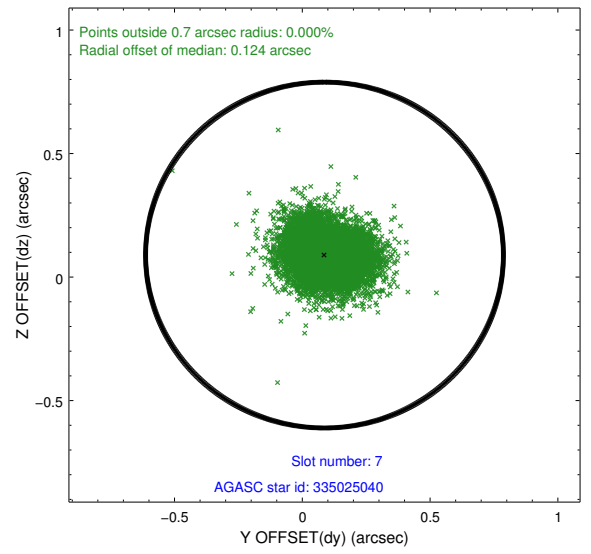
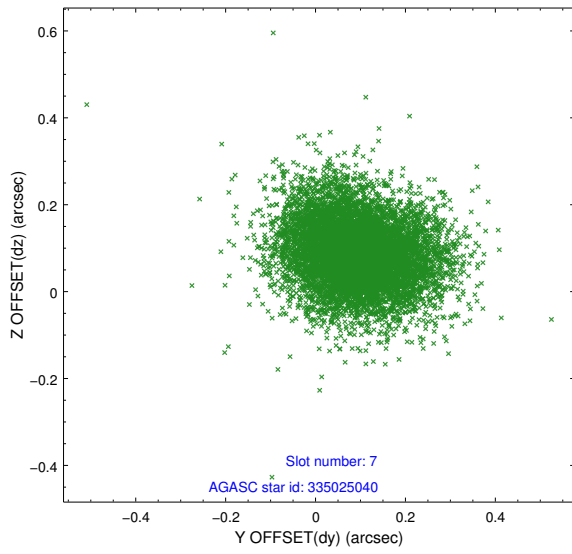
2.4.4 Slot 6



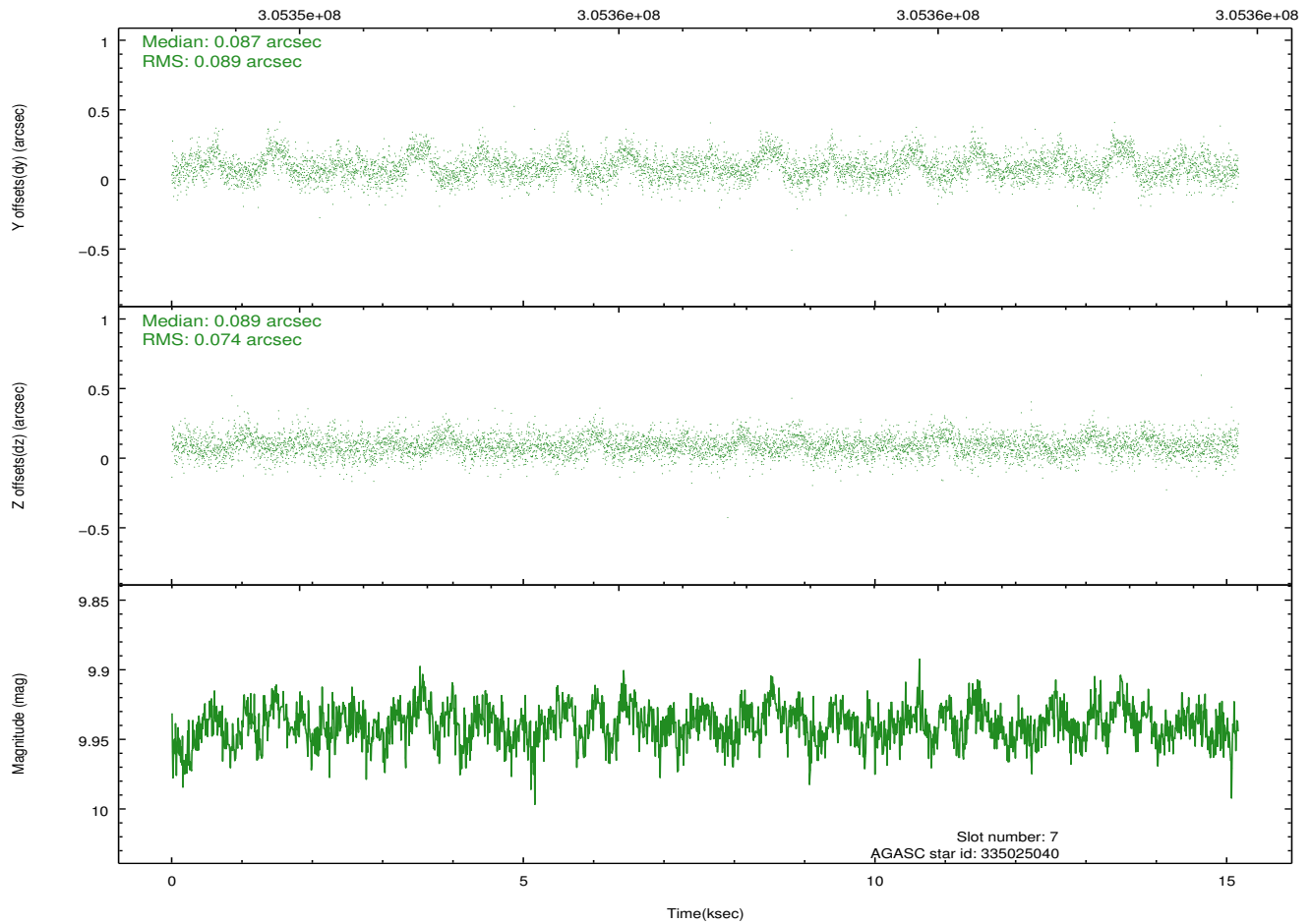
Time (s)



2.4.5 Slot 7

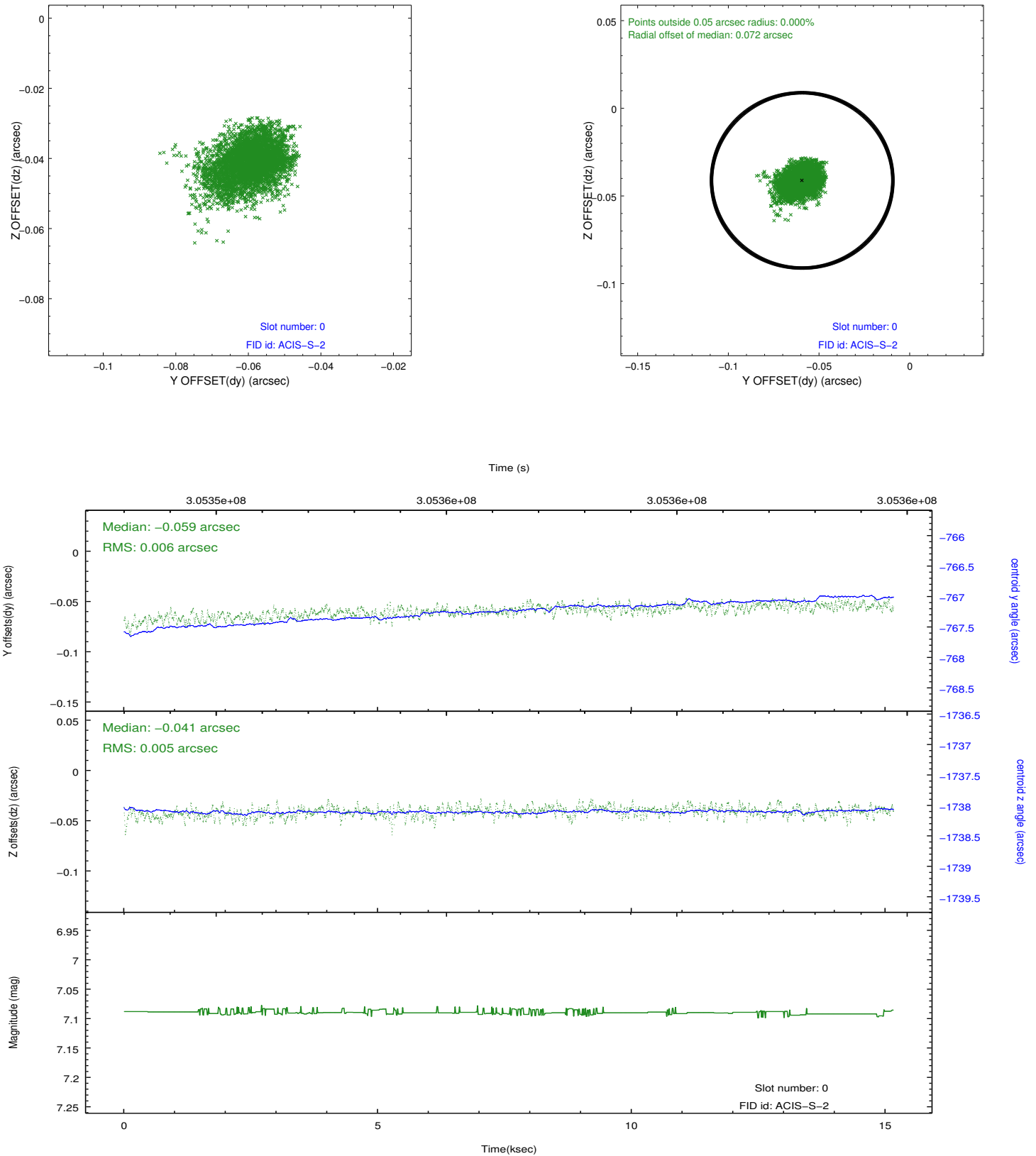


Time (s)

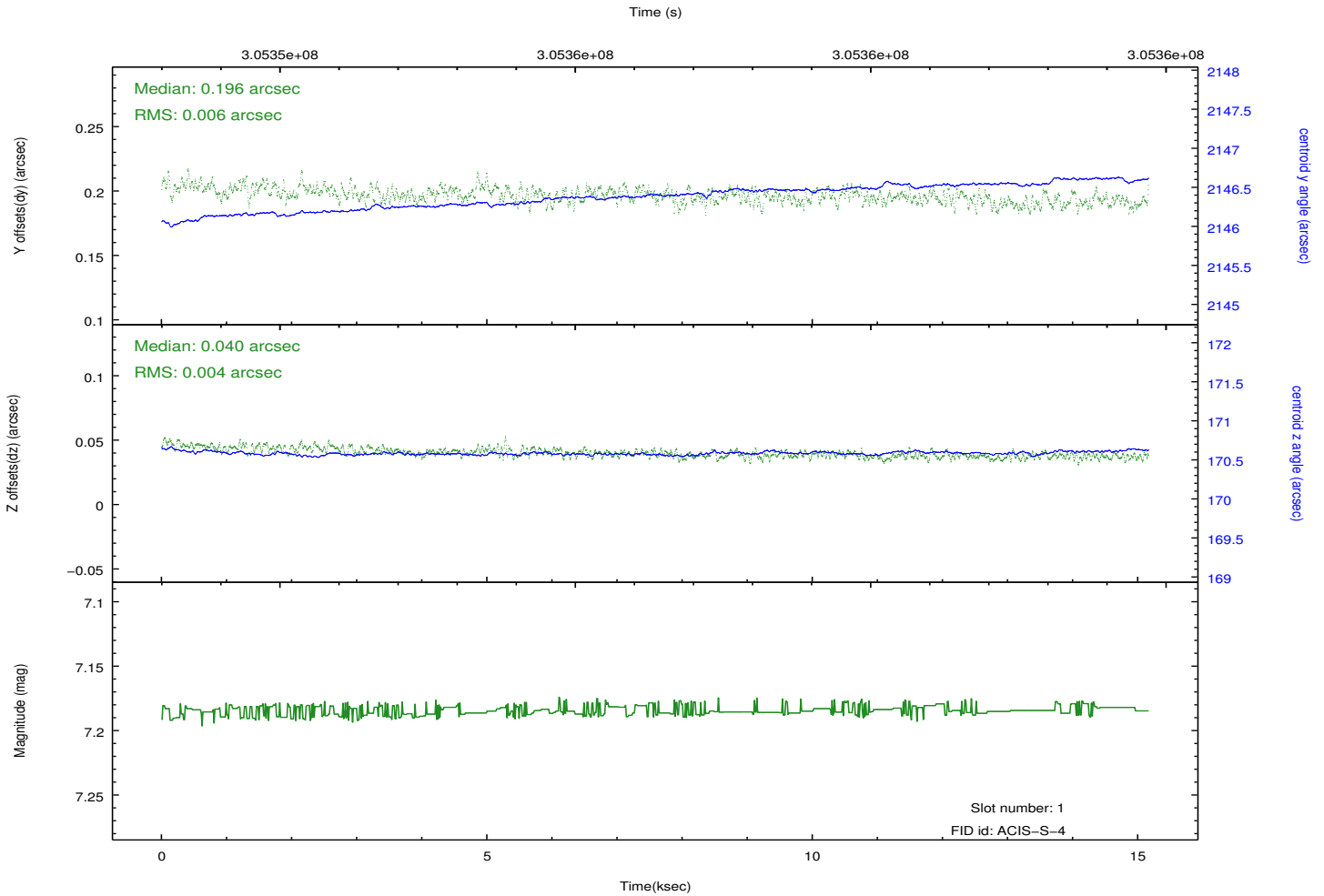
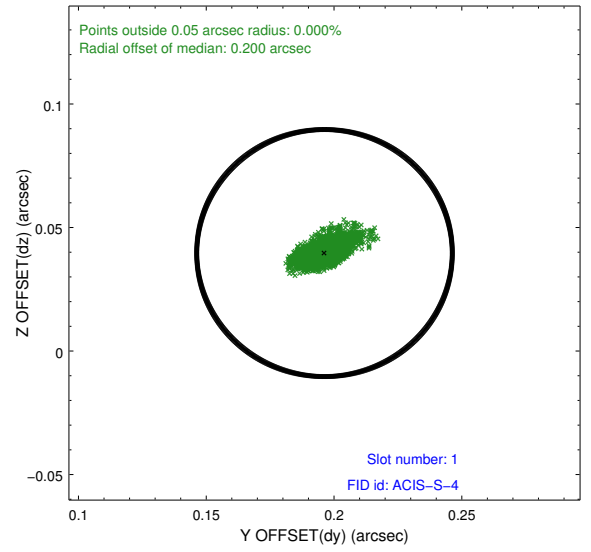
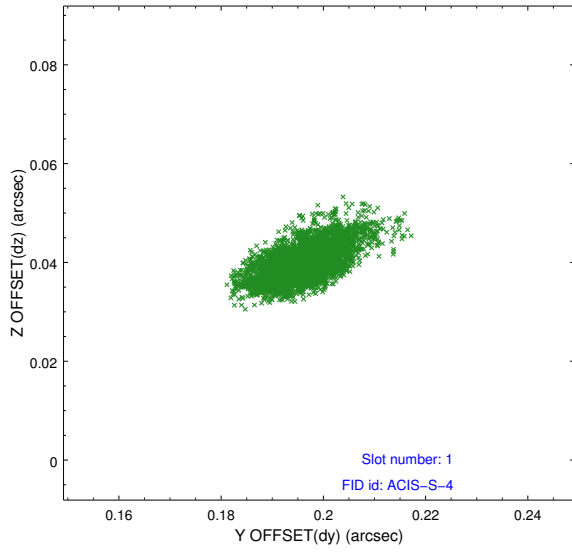


2.5 FID Slots

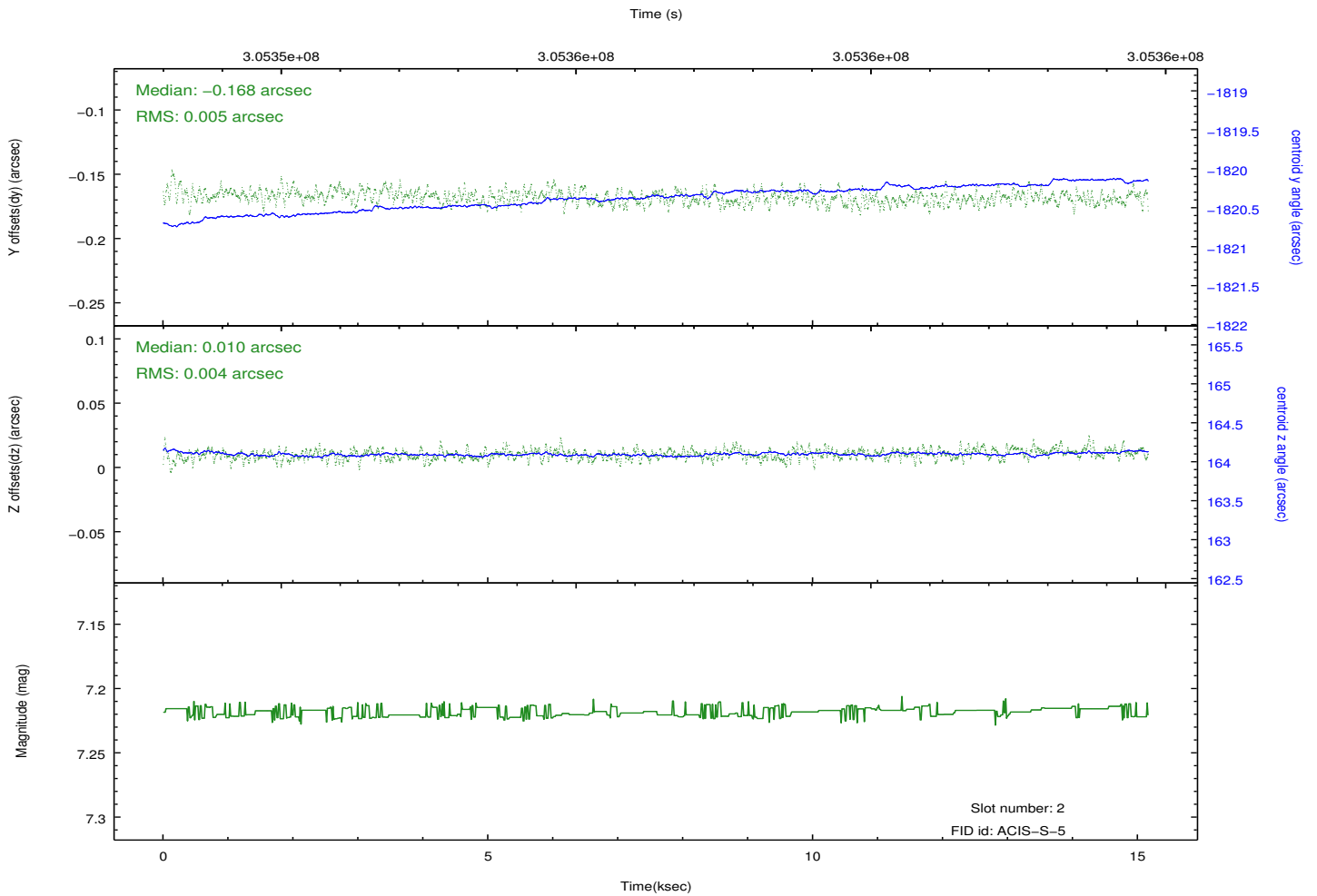
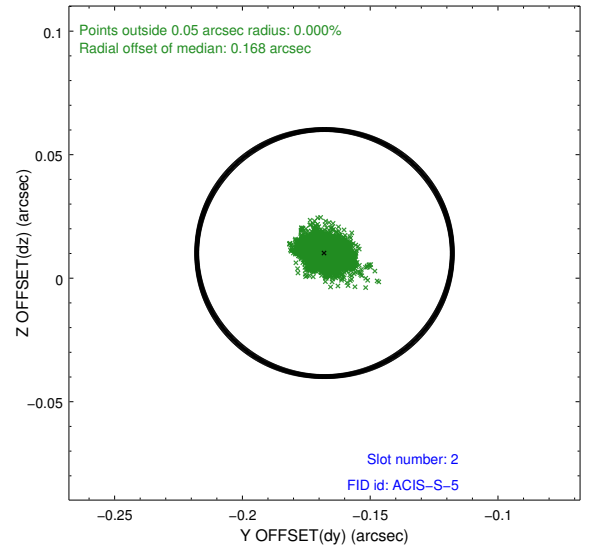
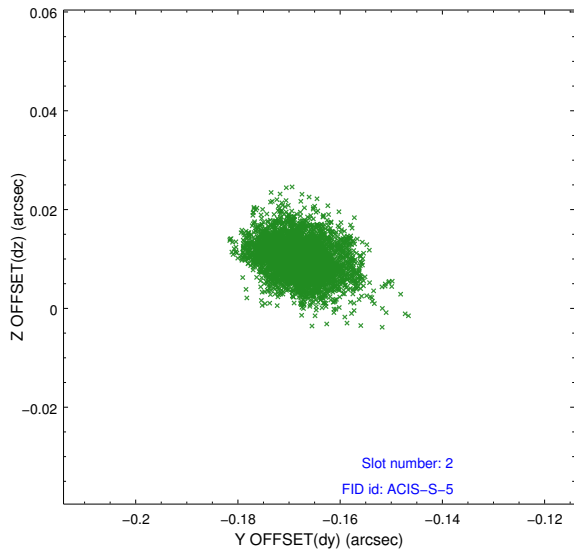
2.5.1 Slot 0



2.5.2 Slot 1



2.5.3 Slot 2



A Summary

A.1 Status

V&V Scientist	Jen Lauer
V&V Date (YYYY-MM-DD)	2012.05.02
V&V Edition	1
V&V Disposition and Status	OK
V&V Charge Time	15.1590001

A.2 Comments

Target coordinates requested: ra=14:35:39.300, dec=+33:41:59.10. Nearest source is at ra=14:35:41.203, dec=+33:42:28.05.