

# V&V Reference Report

## L2 ASCDS Version : 8.4.3.1

Observation 7812 - L2 Version 3  
Chandra X-Ray Center

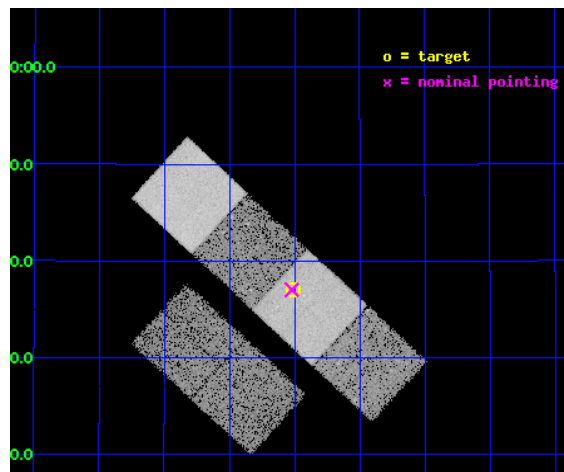
L2 Processing Date : Apr 15 2012

## Contents

<b>1</b>	<b>Front</b>	<b>2</b>
<b>2</b>	<b>OBI</b>	<b>3</b>
2.1	OBI . . . . .	3
2.1.1	Images . . . . .	3
2.1.2	Bias . . . . .	3
2.1.3	Parameters . . . . .	4
2.1.4	Events . . . . .	4
2.2	Compared Parameters . . . . .	5
2.3	Aspect . . . . .	6
2.4	Star Slots . . . . .	9
2.4.1	Slot 3 . . . . .	9
2.4.2	Slot 4 . . . . .	10
2.4.3	Slot 5 . . . . .	11
2.4.4	Slot 6 . . . . .	12
2.4.5	Slot 7 . . . . .	13
2.5	FID Slots . . . . .	14
2.5.1	Slot 0 . . . . .	14
2.5.2	Slot 1 . . . . .	15
2.5.3	Slot 2 . . . . .	16
<b>A</b>	<b>Summary</b>	<b>17</b>
A.1	Status . . . . .	17
A.2	Comments . . . . .	17

# 1 Front

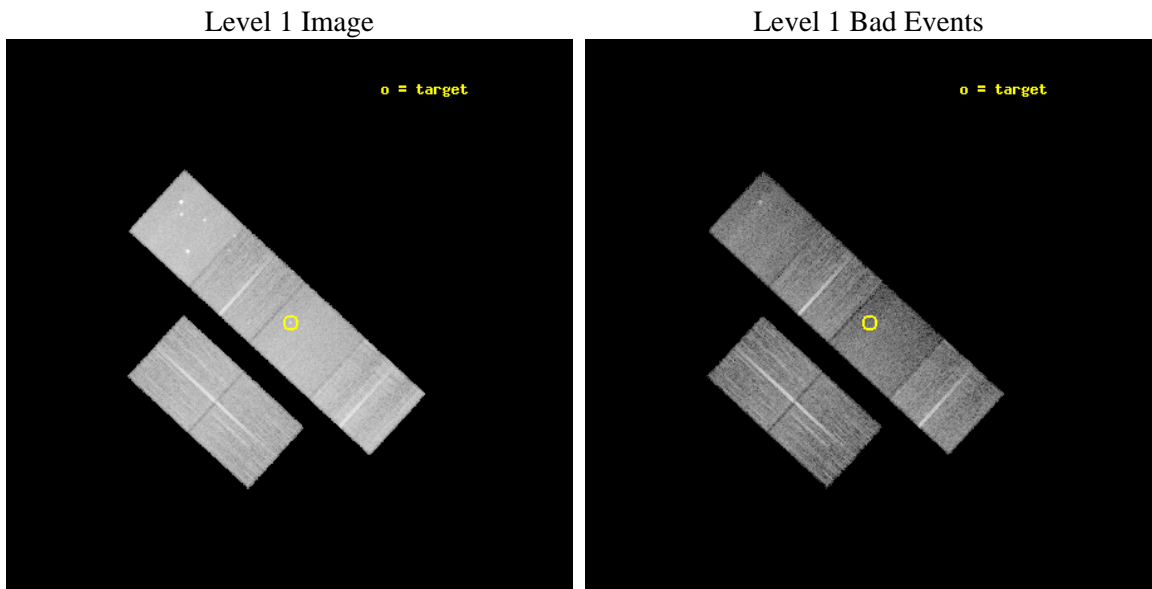
seq_num	701476	Sequence number
obs_id	7812	Observation id
title	The Chandra-RBGS Survey of a Complete Sample of Luminous Infrared Galaxies	Proposal title
observer	Professor David Sanders	Principal investigator
object	VV 340a	Source name
dtcycle	0	&#160
cycle	P	events from which exps? Prim/Second/Both
ra_targ	224.252917	Observer's specified target RA [deg]
dec_targ	24.617417	Observer's specified target Dec [deg]
ra_nom	224.25523303903	Nominal RA [deg]
dec_nom	24.617126062395	Nominal Dec [deg]
roll_nom	42.605878145549	Nominal Roll [deg]
revision	3	Processing version of data
ontime	15052.799943984	Sum of GTIs [s]
livetime	14862.192327385	Livetime [s]
ontime2	15052.799943984	Sum of GTIs [s]
ontime3	15049.559103251	Sum of GTIs [s]
ontime5	15052.799943984	Sum of GTIs [s]
ontime6	15049.558953822	Sum of GTIs [s]
ontime7	15052.799943984	Sum of GTIs [s]
ontime8	15052.799943984	Sum of GTIs [s]
l2events	147279	Number of level 2 events



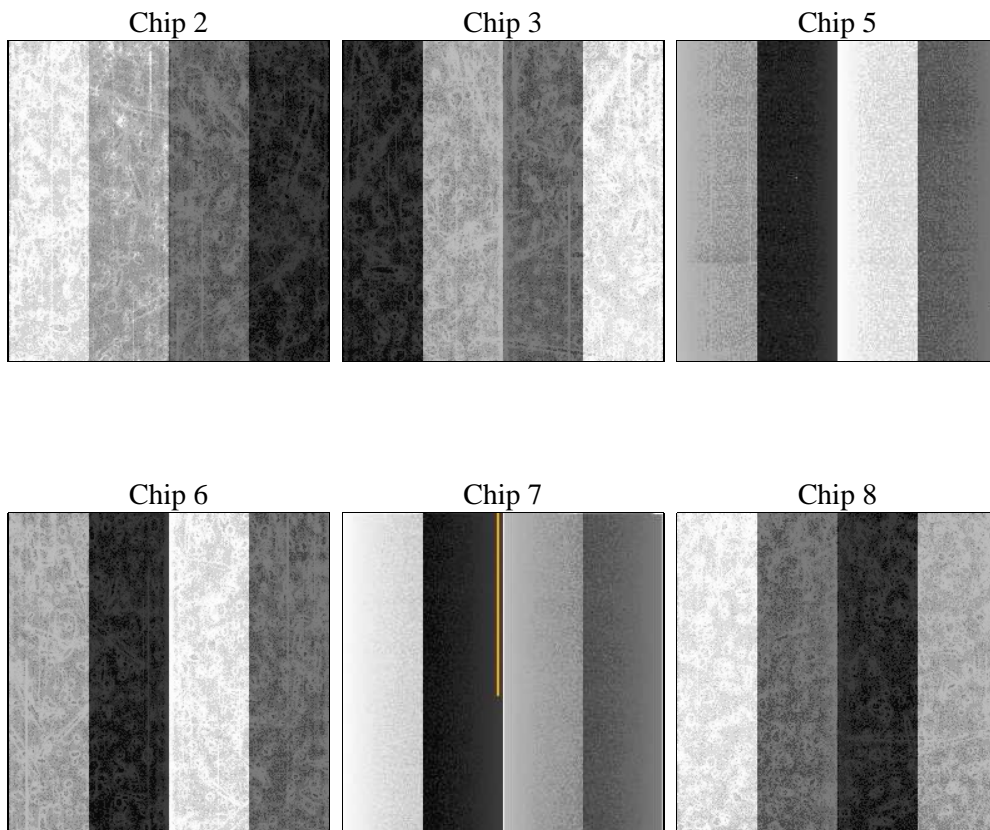
## 2 OBI

### 2.1 OBI

#### 2.1.1 Images



#### 2.1.2 Bias



### 2.1.3 Parameters

obi_num	3	Obi number	sched_exp_time	15000.000000	[s] Scheduled observation exposure time
ascdsver	8.4.3.1	Processing system revision	ontime	15052.799943984	Sum of GTIs [s]
caldbver	4.4.9	&#160	ontime2	15052.799943984	Sum of GTIs [s]
date	2012-04-15T14:37:27	Date and time of file creation	ontime3	15049.559103251	Sum of GTIs [s]
revision	3	Processing version of data	ontime5	15052.799943984	Sum of GTIs [s]
			ontime6	15049.558953822	Sum of GTIs [s]
			ontime7	15052.799943984	Sum of GTIs [s]
			ontime8	15052.799943984	Sum of GTIs [s]
			l1events	661957	Number of level 1 events

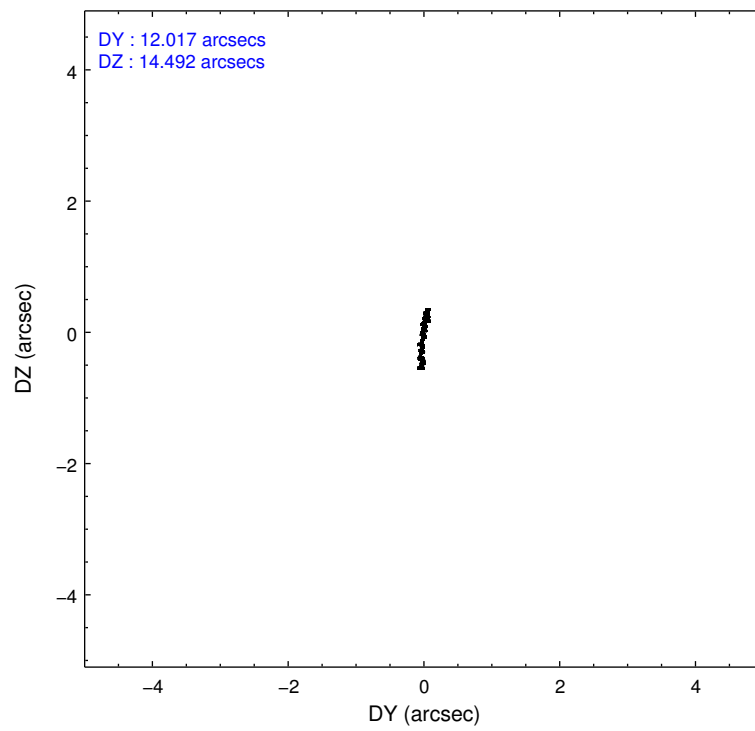
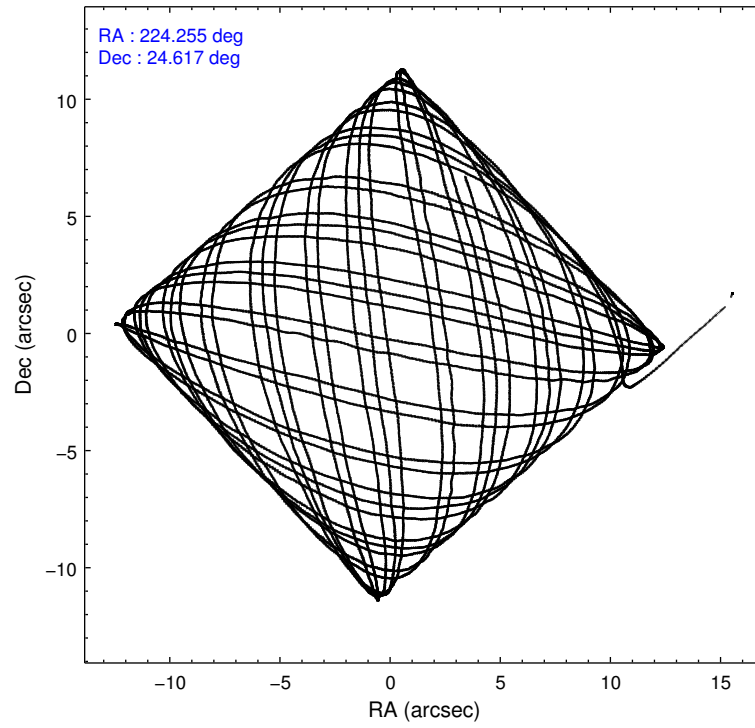
### 2.1.4 Events

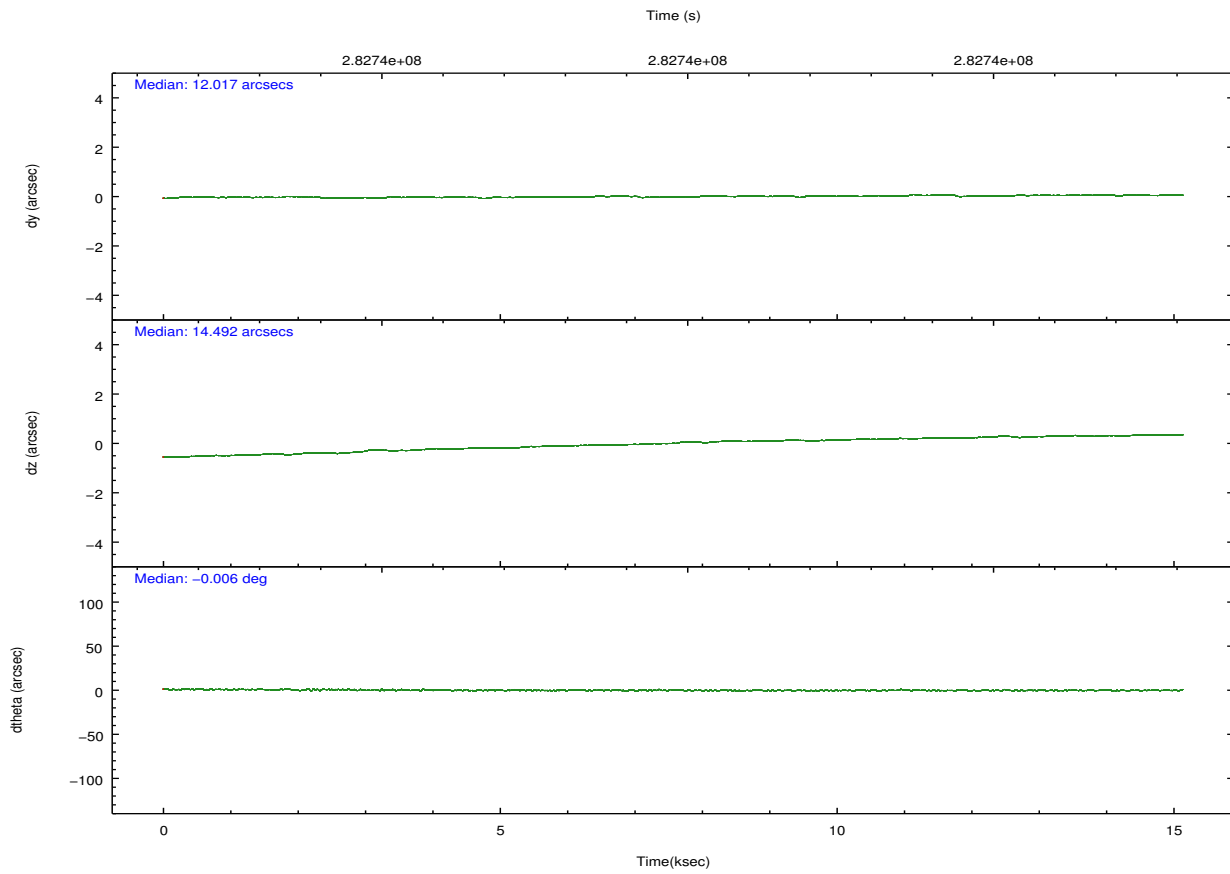
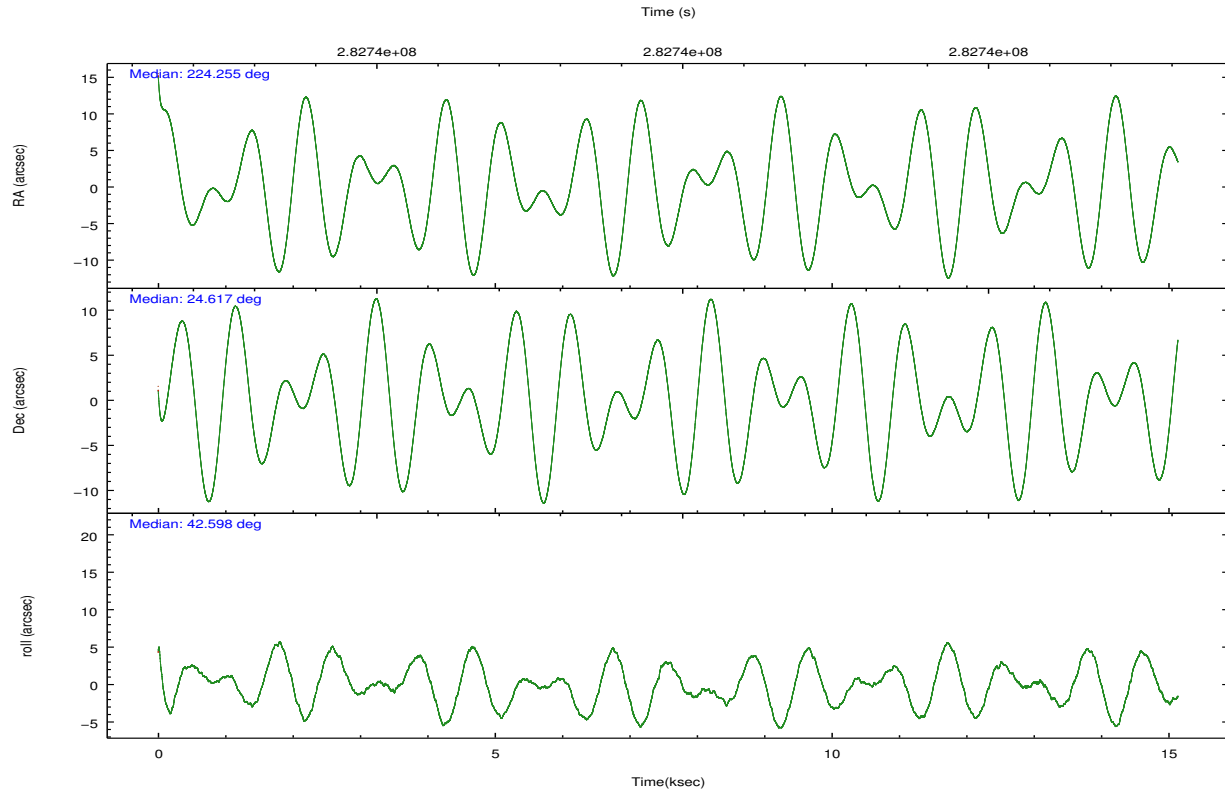
	ccd 2	ccd 3	ccd 5	ccd 6	ccd 7	ccd 8		ccd 2	ccd 3	ccd 5	ccd 6	ccd 7	ccd 8
level 1 events	103035	90504	134356	96700	110252	127110	grade 0 events	3674	3217	7807	4204	5127	11802
rejected events	93014	81577	67509	85945	59400	91043		3%	3%	5%	4%	4%	9%
rejected %	90%	90%	50%	88%	53%	71%	grade 1 events	47	54	247	36	161	110
								0%	0%	0%	0%	0%	0%
							grade 2 events	2446	1916	19580	2235	10230	7054
								2%	2%	14%	2%	9%	5%
							grade 3 events	1036	1013	2786	1108	4790	4514
								1%	1%	2%	1%	4%	3%
							grade 4 events	1064	1006	2685	1083	4771	4177
								1%	1%	1%	1%	4%	3%
							grade 5 events	3177	3799	10300	3883	11372	5677
								3%	4%	7%	4%	10%	4%
							grade 6 events	1802	1777	34008	2128	25942	8536
								1%	1%	25%	2%	23%	6%
							grade 7 events	89789	77722	56943	82023	47859	85240
								87%	85%	42%	84%	43%	67%

## 2.2 Compared Parameters

Parameter	Planned	Actual	Parameter	Planned	Actual
Instrument	ACIS	ACIS	Obspar format version number	7	7
Detector	ACIS-235678	ACIS-235678	Obspar file type	PREDICTED	ACTUAL
Grating	NONE	NONE	Obspar update status	NONE	UPDATED
Data mode	VFAINT	VFAINT	CCD I0 on	N	N
Observation mode	POINTING	POINTING	CCD I1 on	N	N
[deg] Pointing RA	224.246600	224.2552330390295	CCD I2 on	O1	Y
[deg] Pointing Dec	24.590933	24.61712606239472	CCD I3 on	O2	Y
[deg] Pointing Roll	42.452840	42.60587814554923	CCD S0 on	N	N
[mm] SIM focus pos	-0.684267	-0.6828225247311905	CCD S1 on	O3	Y
[mm] SIM defocus	0	0.001444936568705701	CCD S2 on	O5	Y
[mm] SIM translation stage pos	-190.132523	-190.1400660498719	CCD S3 on	Y	Y
[mm] SIM translation stage offset	0	0.00754346686406393	CCD S4 on	O4	Y
[s] Observation start time (MET)	282732326.184000	282731309.22017	CCD S5 on	N	N
Observation start date	2006-12-17T08:44:21	2006-12-17T08:28:29	Number of optional ACIS chips dropped	0	0
[s] Observation end time (MET)	282747326.184000	282748124.85846	On-chip summing requested	N	N
Observation end date	2006-12-17T12:54:21	2006-12-17T13:08:44	Subarray requested	NONE	NONE
Read mode	TIMED	TIMED	Alternating exposures requested	N	N
			[s] Primary exposure time	0.000000	3.2

## 2.3 Aspect



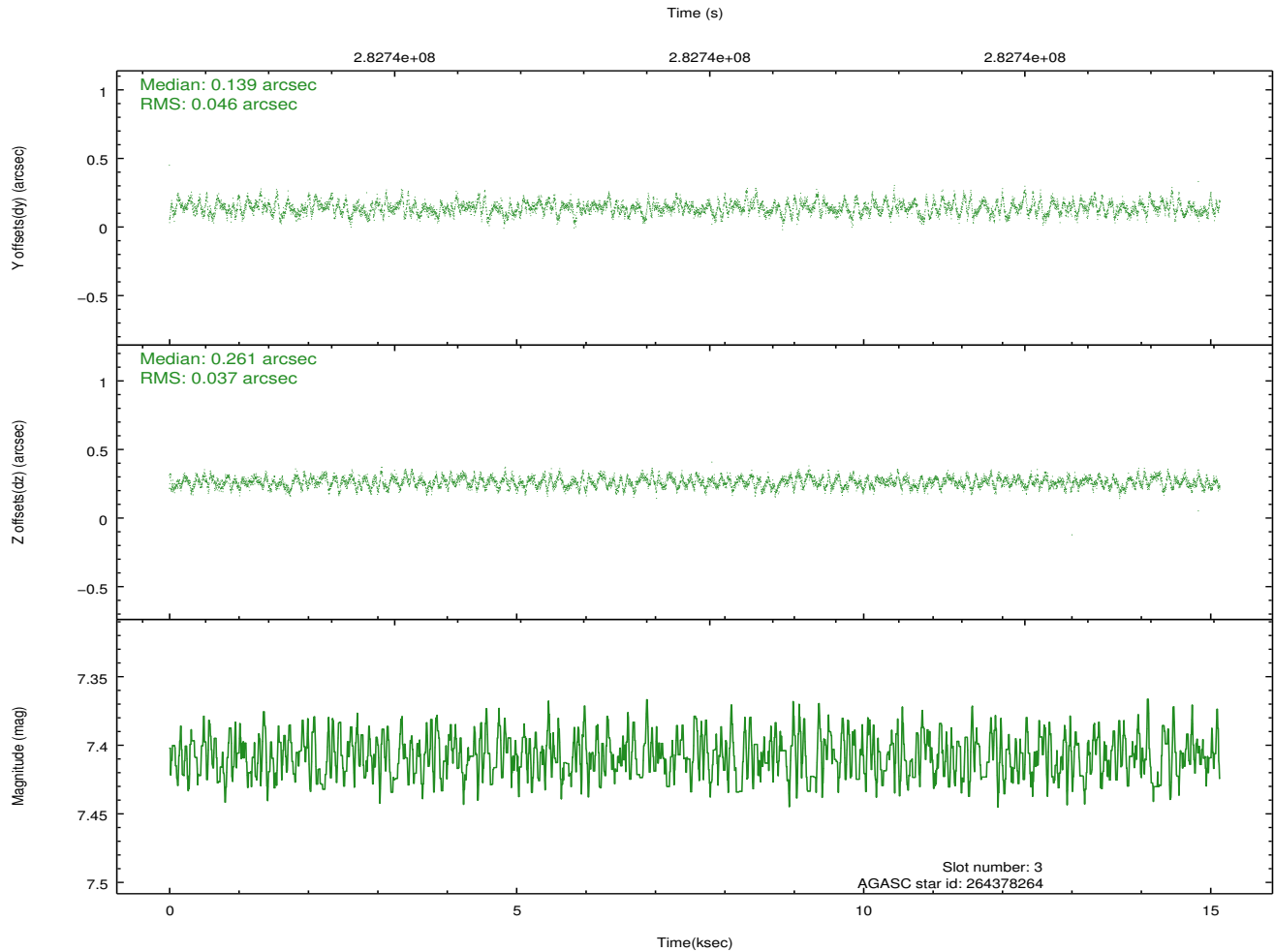
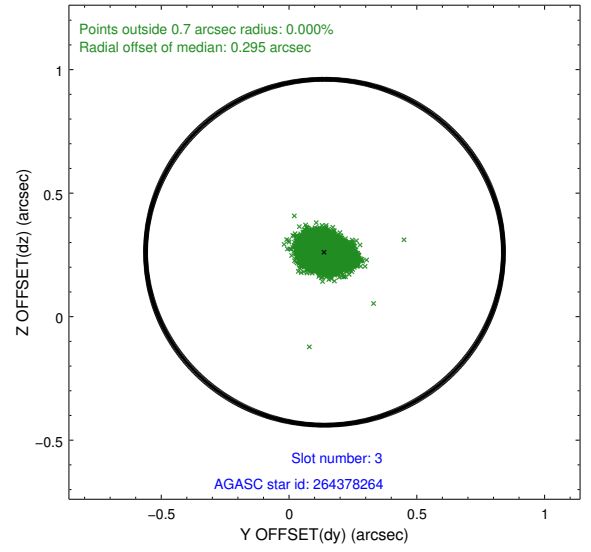
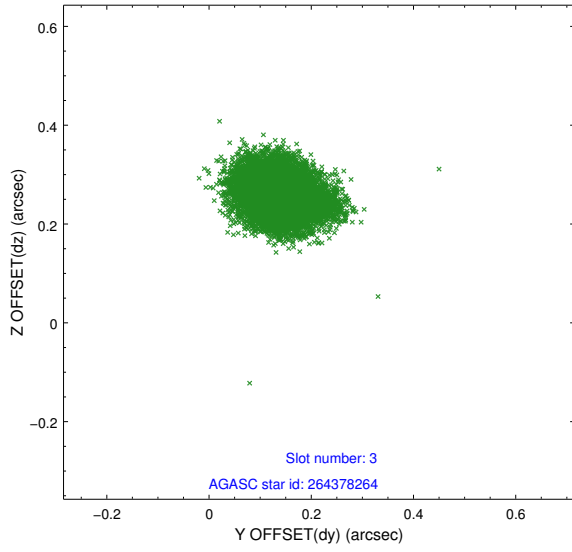


### Slot Statistics

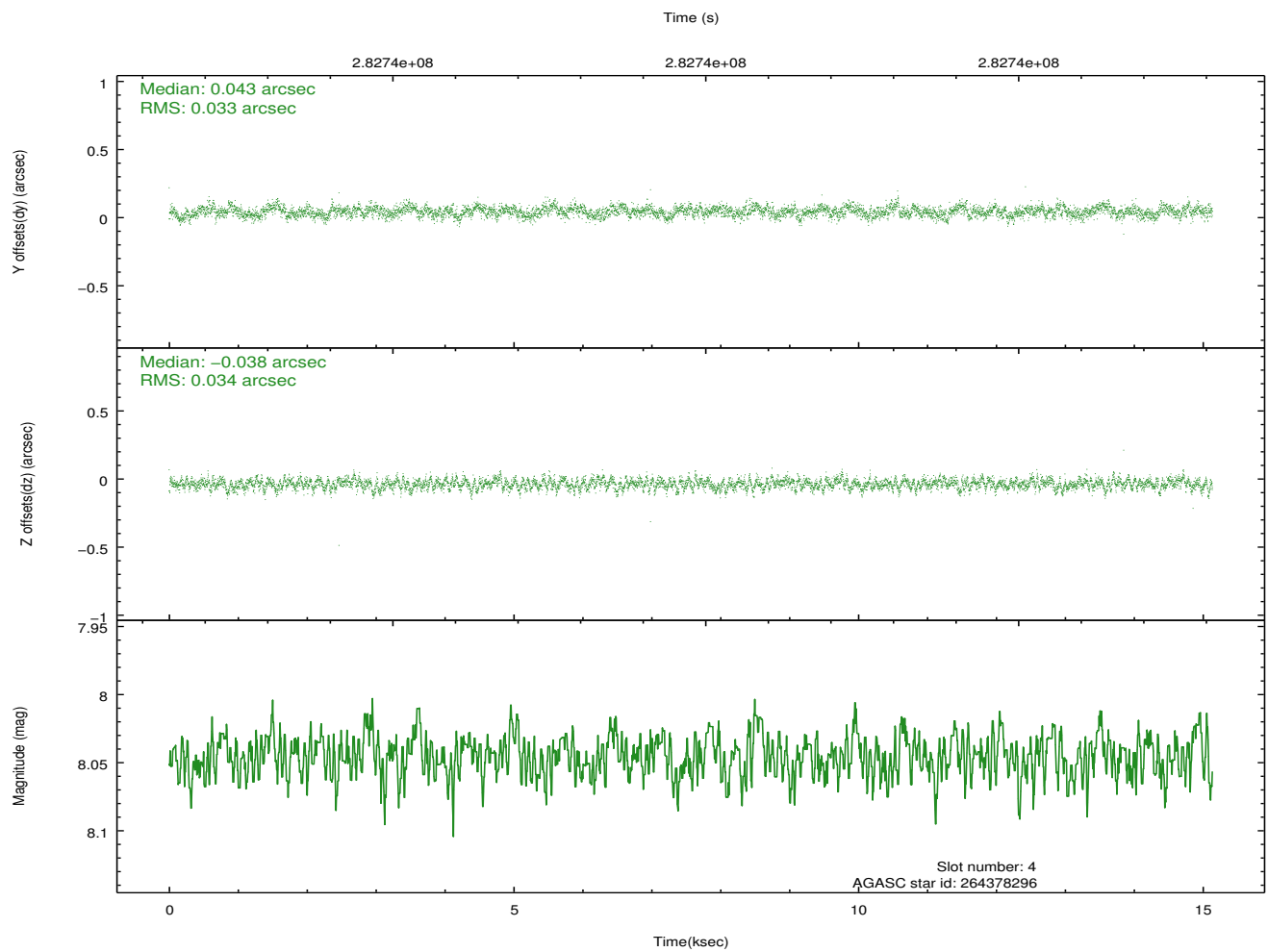
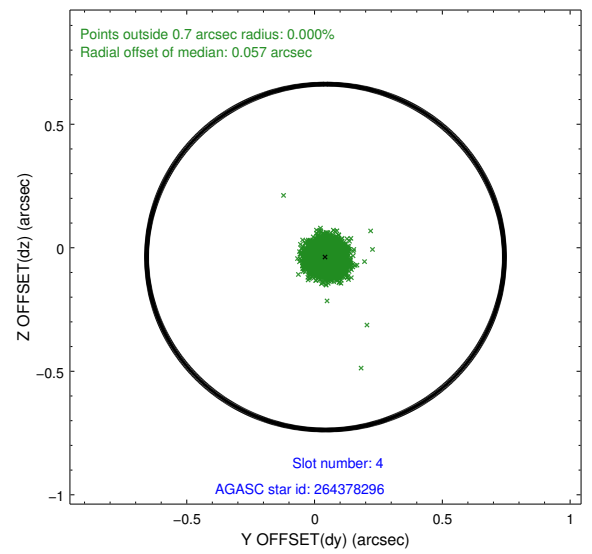
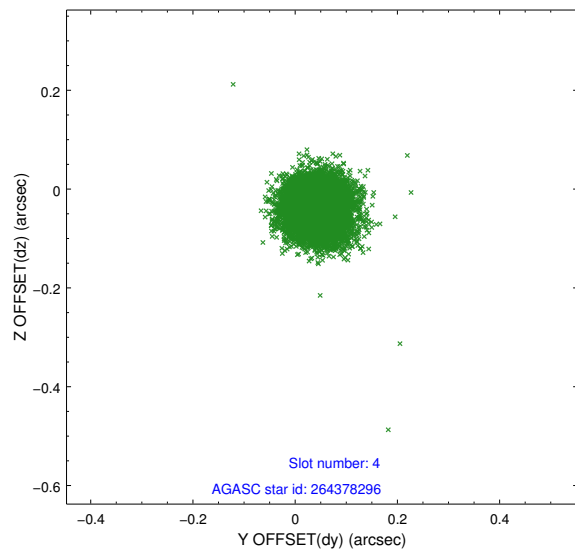
slot	status	id	mag	n_pts	med_dy	med_dz	dr1	dr2	ra	dec	mean_y	mean_z
0	FID	ACIS-S-1	7.18	3693	0.094	-0.032	0.007	0.012	0.000000	0.000000	931.25	-1731.47
1	FID	ACIS-S-2	7.10	3692	-0.043	-0.024	0.012	0.019	0.000000	0.000000	-764.63	-1736.35
2	FID	ACIS-S-5	7.23	3692	-0.074	0.063	0.009	0.015	0.000000	0.000000	-1818.23	165.84
3	GUIDE	264378264	7.41	7385	0.139	0.261	0.063	0.099	224.702047	24.169737	82.57	-2126.31
4	GUIDE	264378296	8.05	7383	0.043	-0.038	0.050	0.081	224.225726	24.809189	480.10	625.80
5	GUIDE	264770816	8.19	7383	0.047	-0.114	0.063	0.101	224.038897	25.087716	707.82	1777.56
6	GUIDE	264773320	7.24	7385	-0.184	-0.034	0.046	0.077	224.706788	25.047987	2219.81	203.28
7	GUIDE	264774552	7.43	7384	-0.051	-0.074	0.056	0.096	224.346661	25.323655	2020.76	1727.30

## 2.4 Star Slots

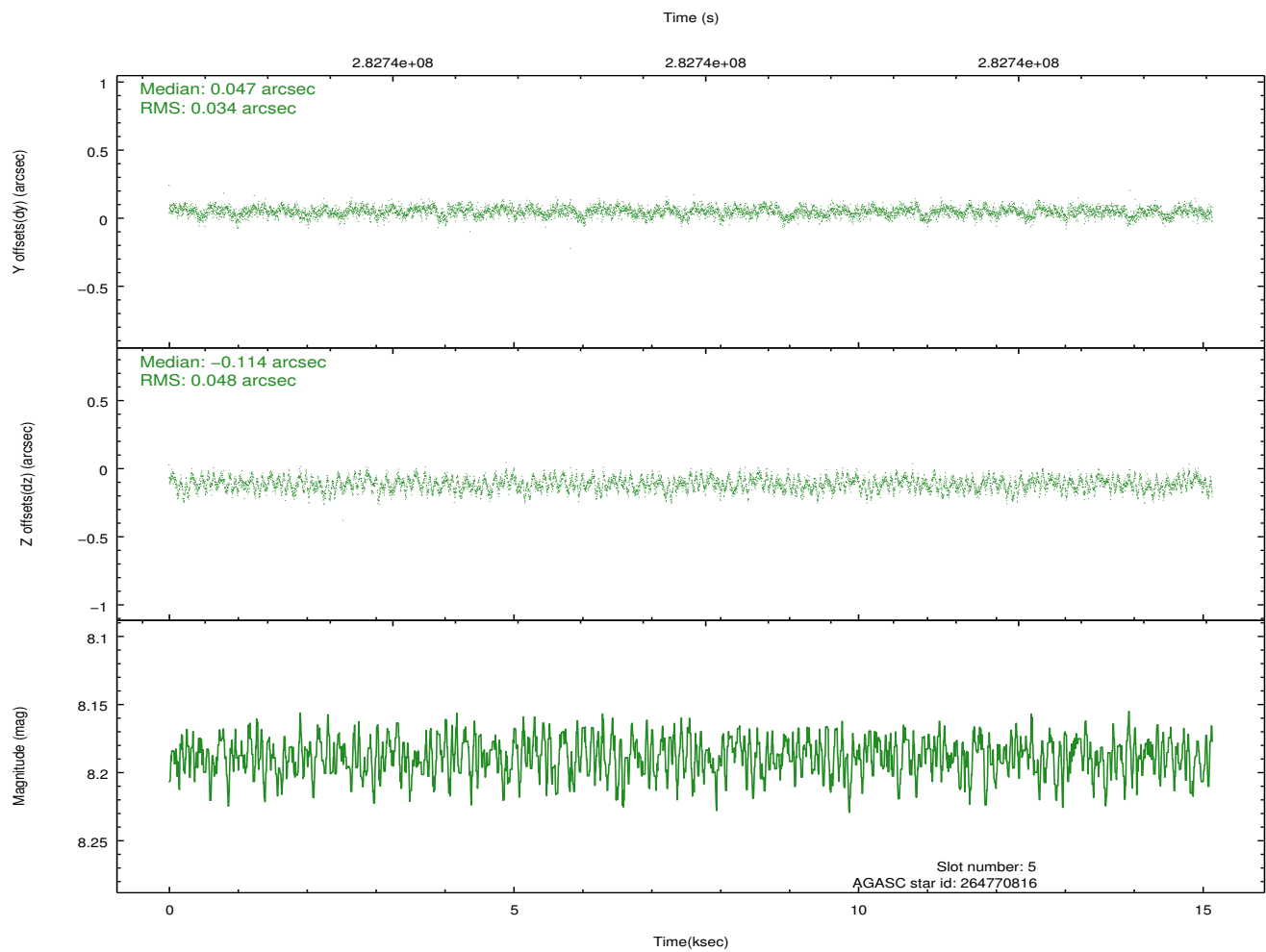
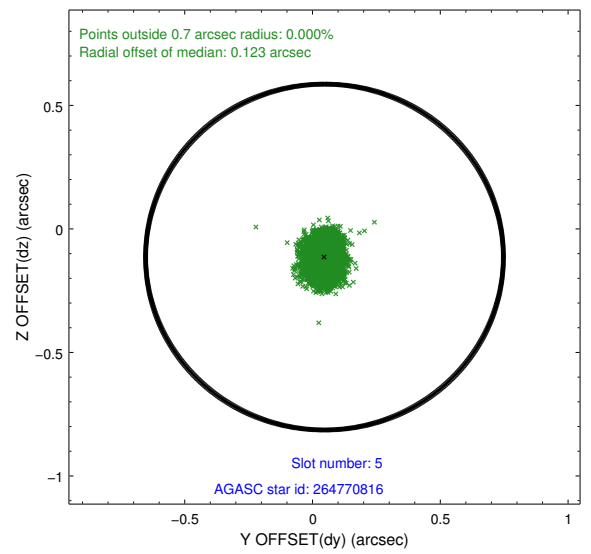
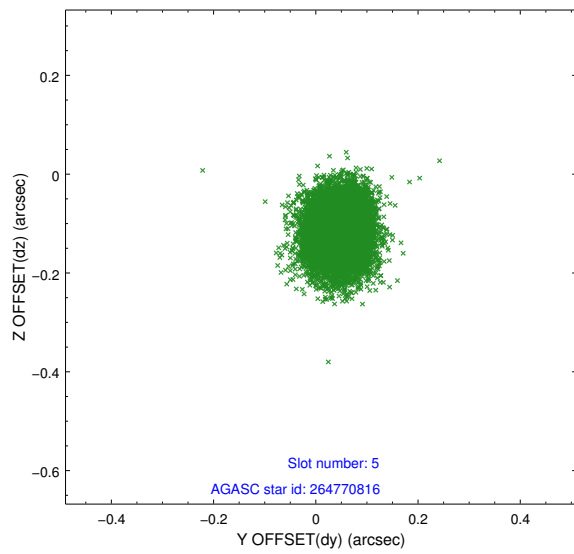
### 2.4.1 Slot 3



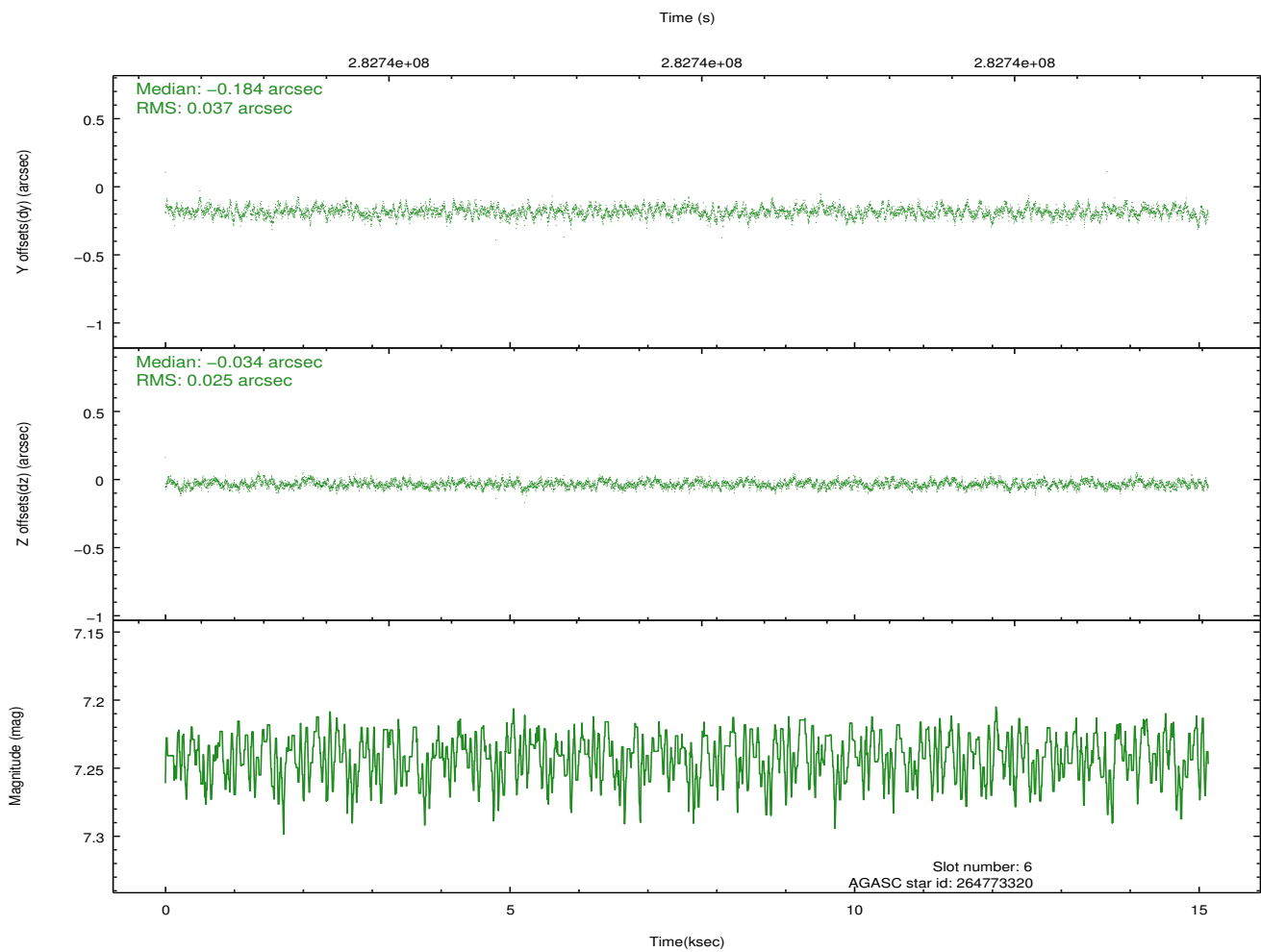
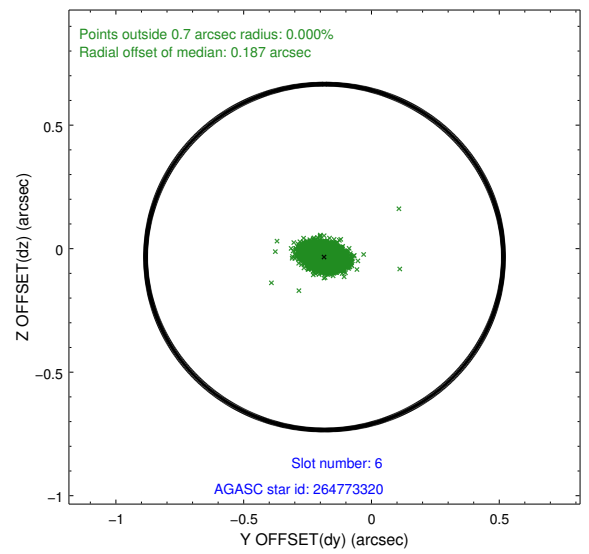
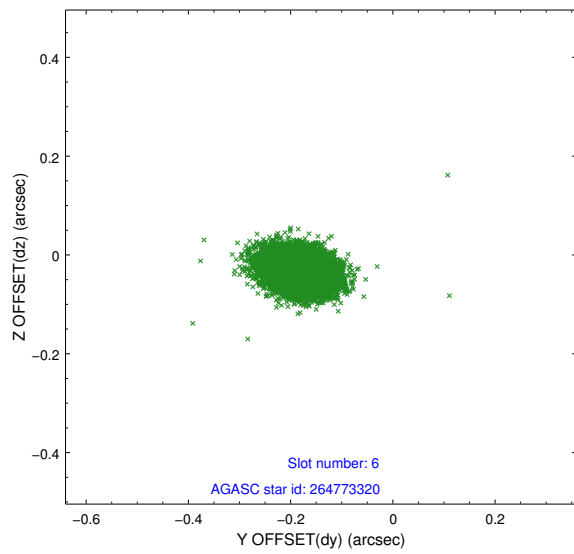
## 2.4.2 Slot 4



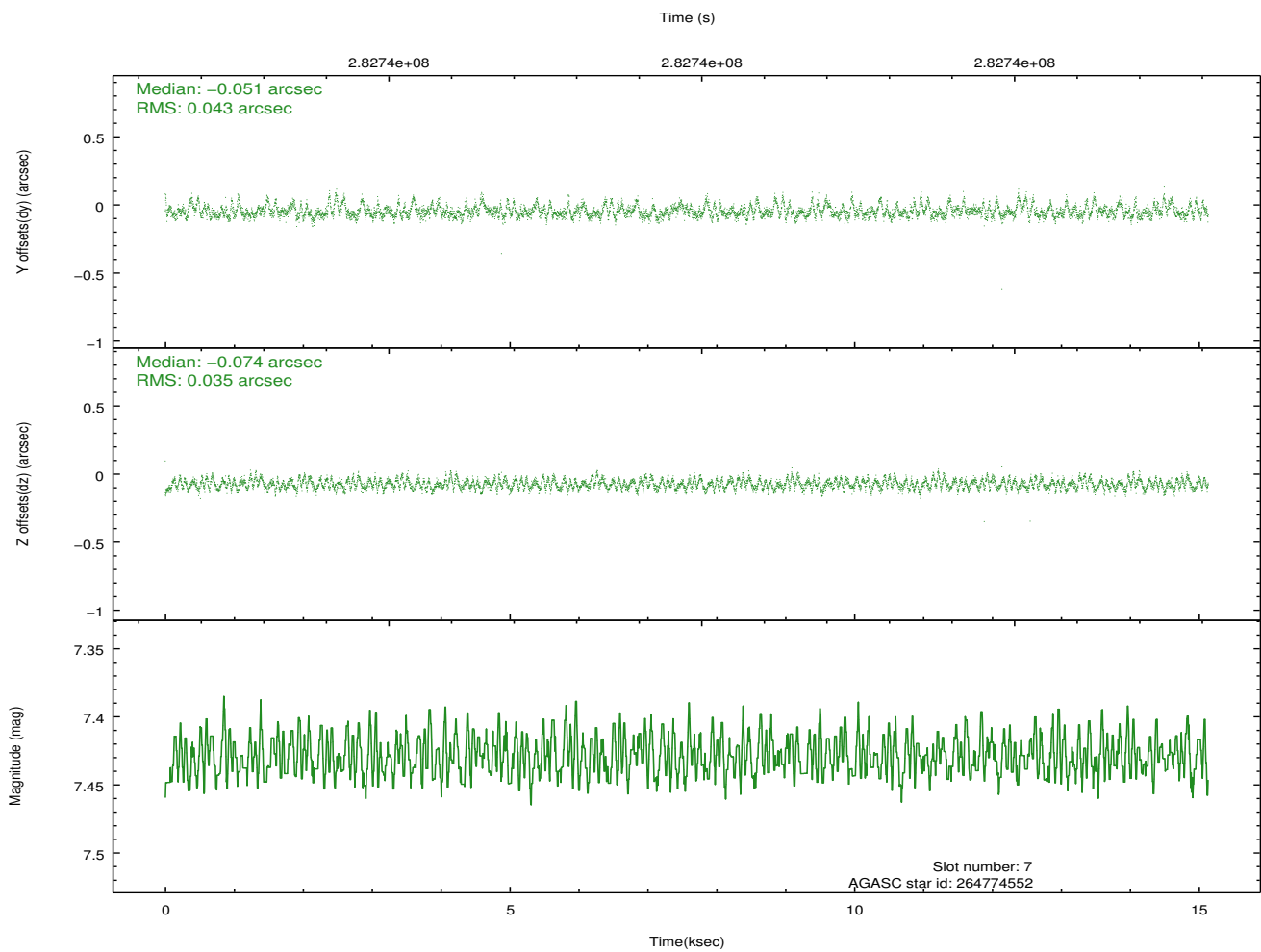
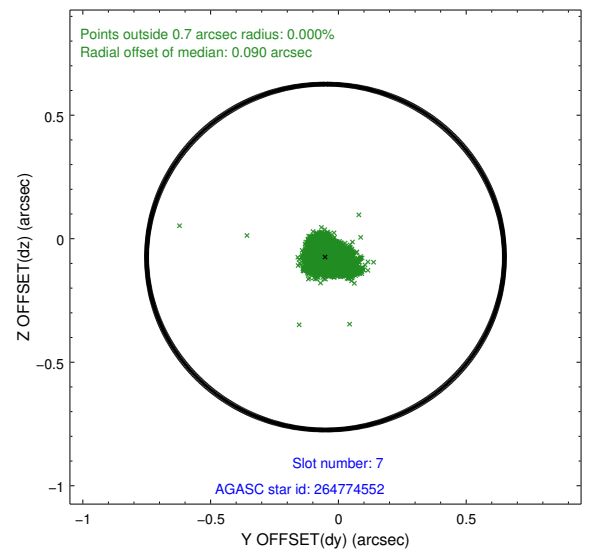
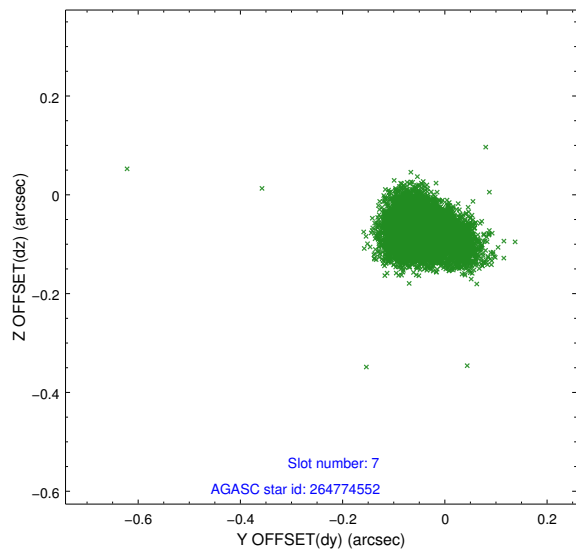
### 2.4.3 Slot 5



## 2.4.4 Slot 6

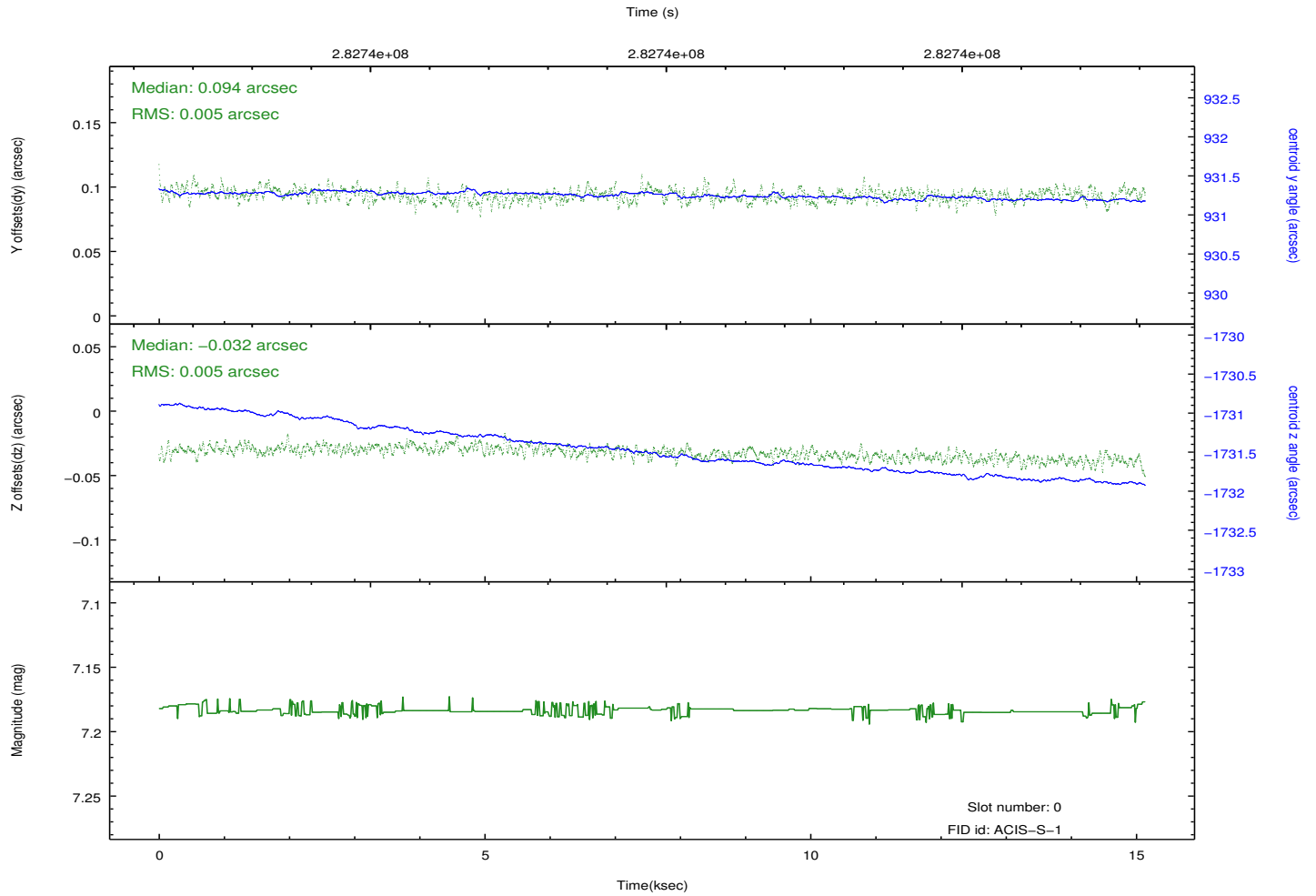
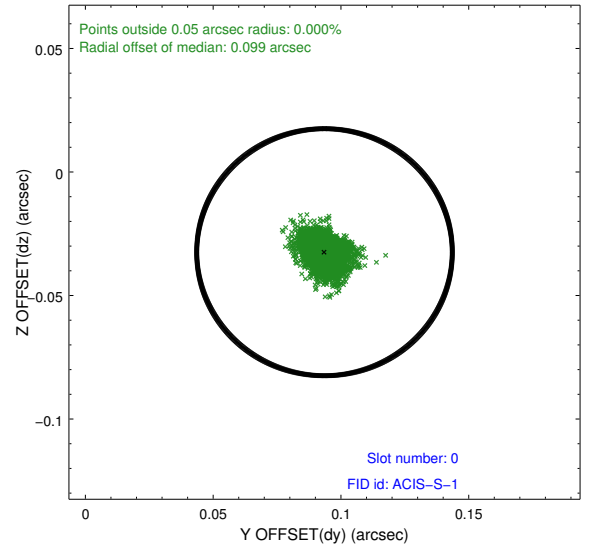
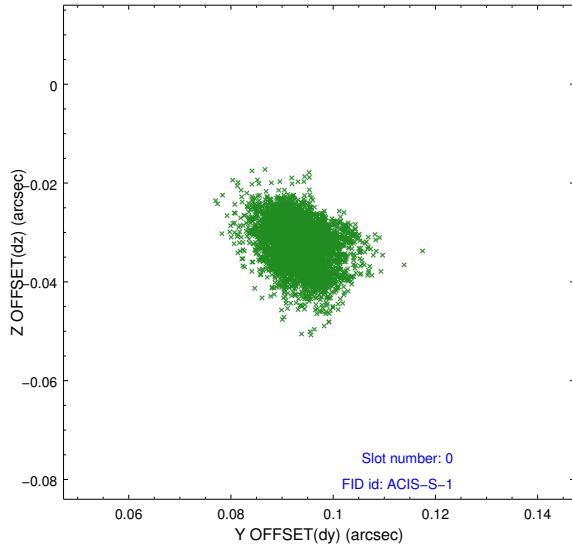


## 2.4.5 Slot 7

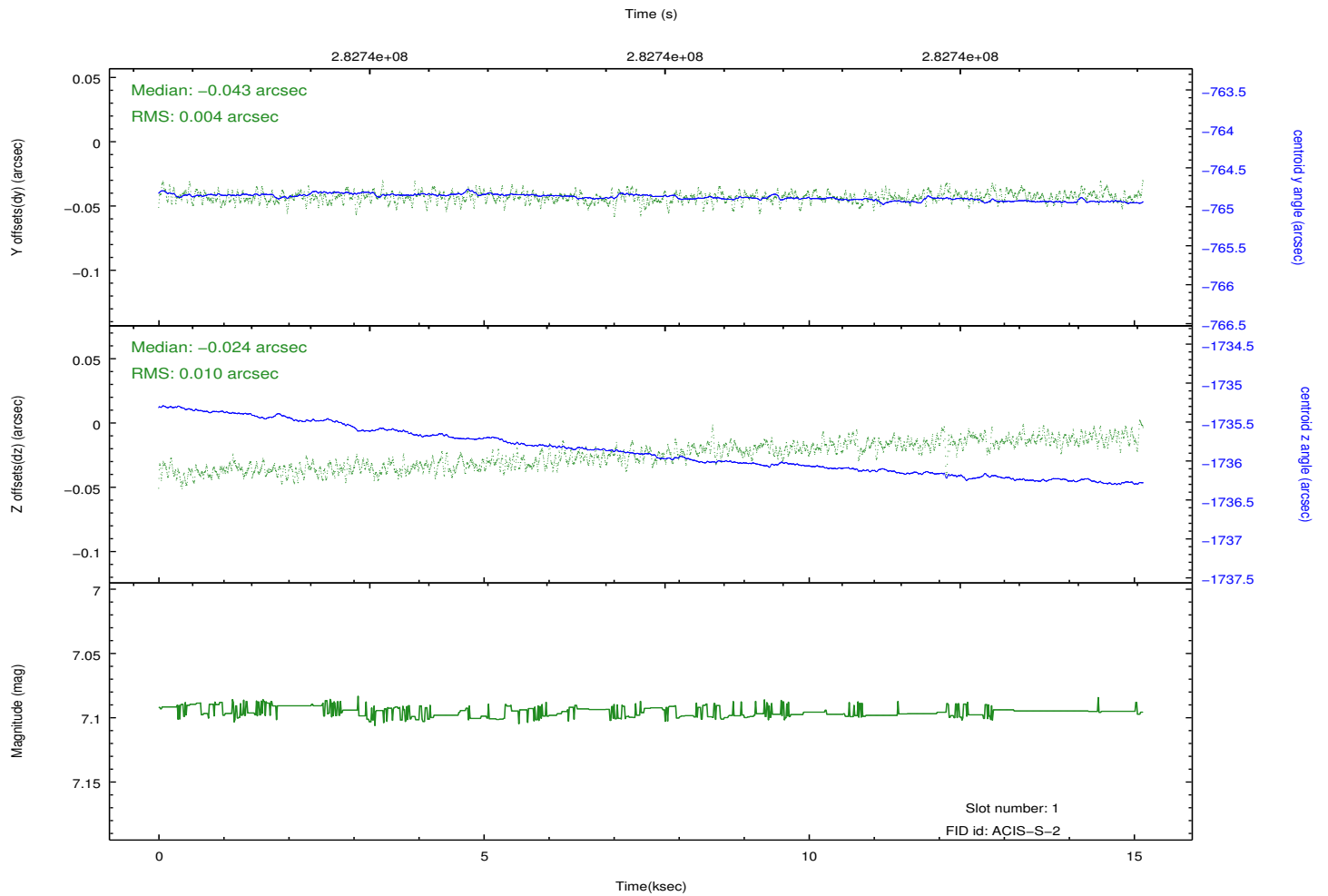
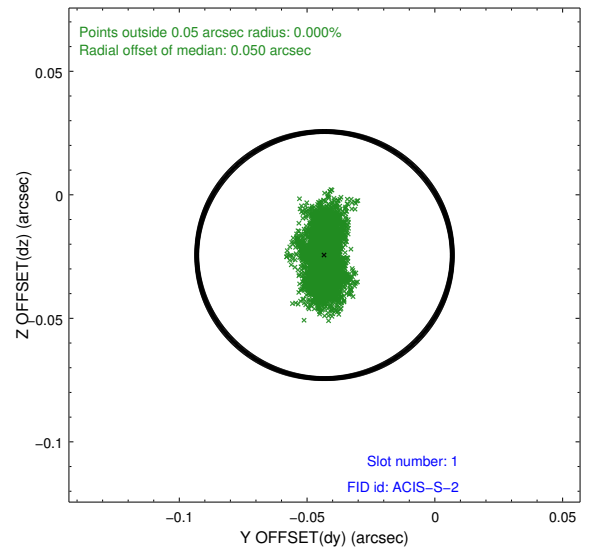
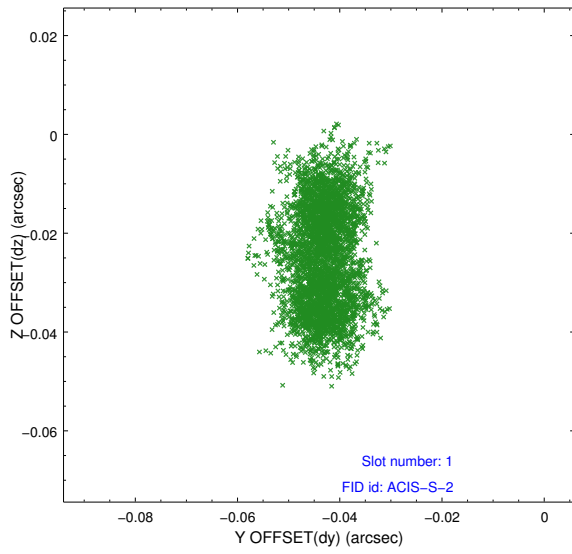


## 2.5 FID Slots

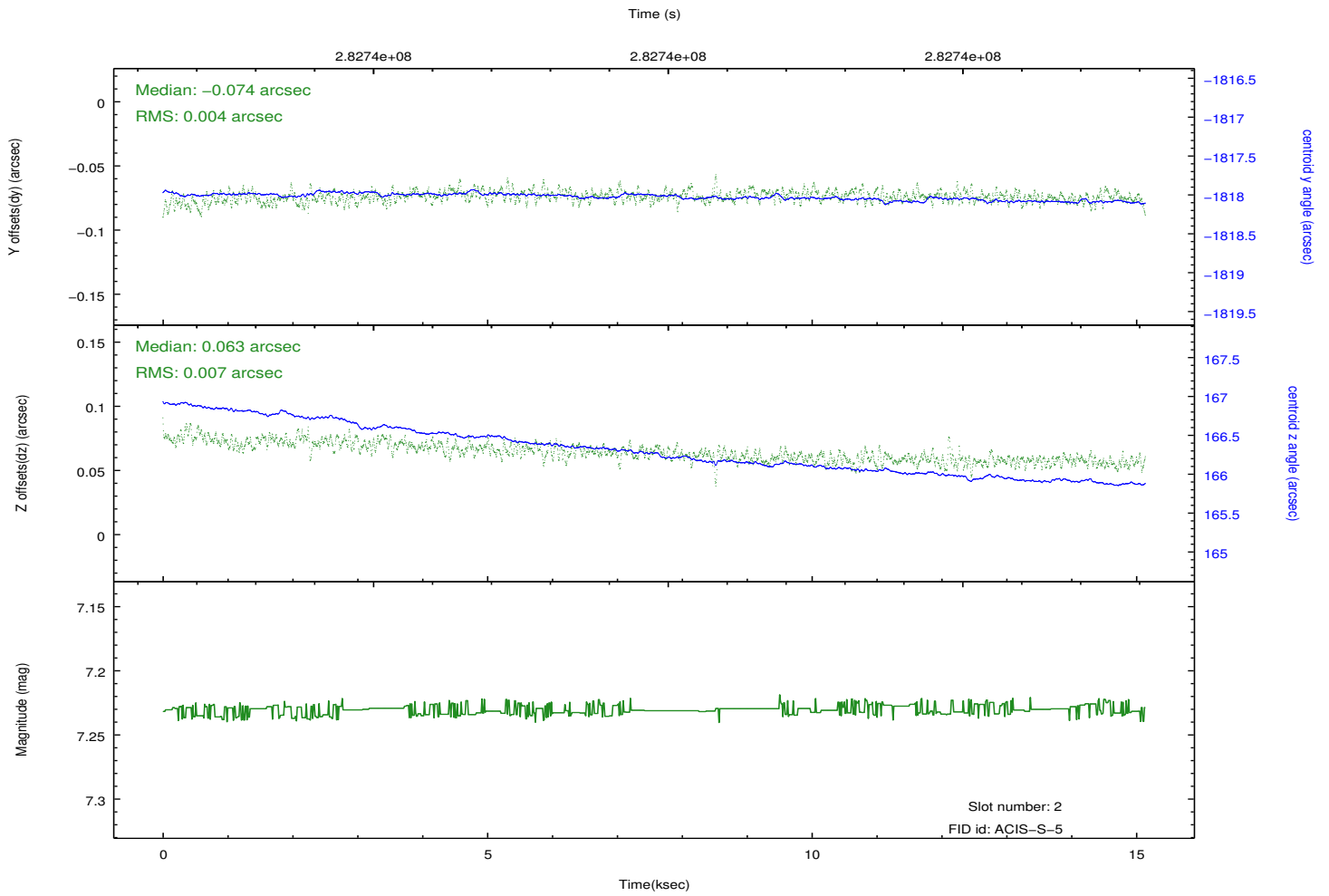
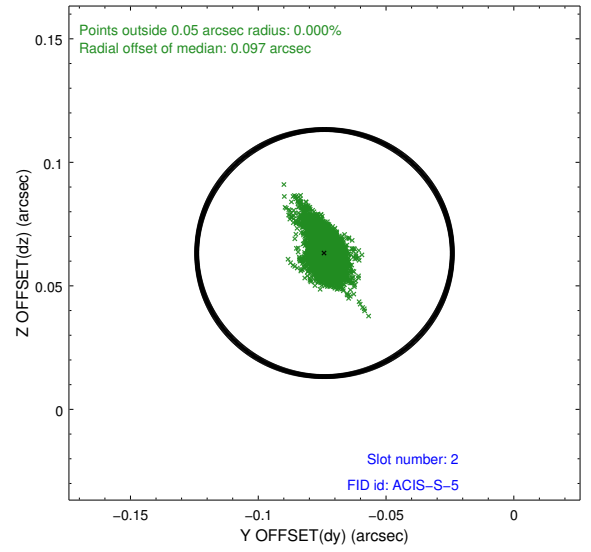
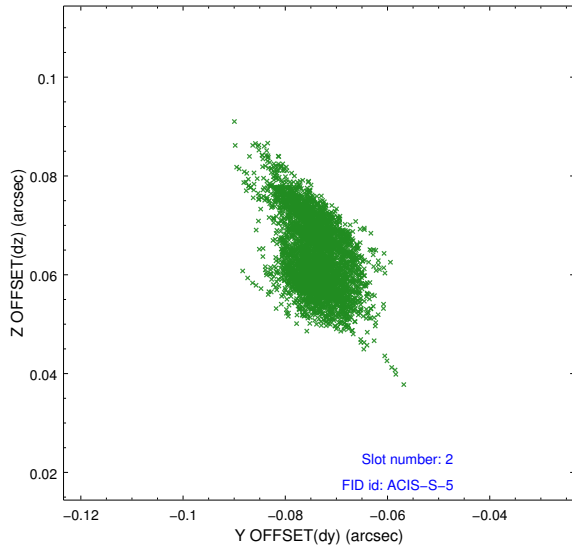
### 2.5.1 Slot 0



## 2.5.2 Slot 1



### 2.5.3 Slot 2



## A Summary

### A.1 Status

V&V Scientist	Beth Sundheim
V&V Date (YYYY-MM-DD)	2012.04.18
V&V Edition	1
V&V Disposition and Status	OK
V&V Charge Time	15.0527999

### A.2 Comments