

# V&V Reference Report

## L2 ASCDS Version : 8.4.4

Observation 7932 - L2 Version 3  
Chandra X-Ray Center

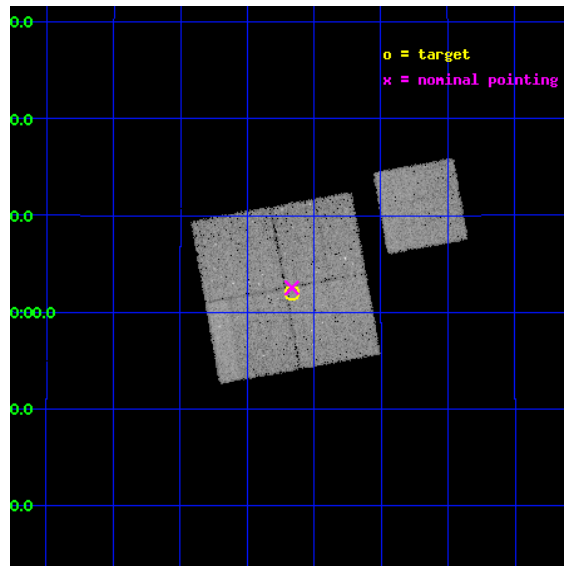
L2 Processing Date : May 6 2012

## Contents

<b>1</b>	<b>Front</b>	<b>2</b>
<b>2</b>	<b>OBI</b>	<b>3</b>
2.1	OBI . . . . .	3
2.1.1	Images . . . . .	3
2.1.2	Bias . . . . .	3
2.1.3	Parameters . . . . .	4
2.1.4	Events . . . . .	4
2.2	Compared Parameters . . . . .	5
2.3	Aspect . . . . .	6
2.4	Star Slots . . . . .	9
2.4.1	Slot 3 . . . . .	9
2.4.2	Slot 4 . . . . .	10
2.4.3	Slot 5 . . . . .	11
2.4.4	Slot 6 . . . . .	12
2.4.5	Slot 7 . . . . .	13
2.5	FID Slots . . . . .	14
2.5.1	Slot 0 . . . . .	14
2.5.2	Slot 1 . . . . .	15
2.5.3	Slot 2 . . . . .	16
<b>A</b>	<b>Summary</b>	<b>17</b>
A.1	Status . . . . .	17
A.2	Comments . . . . .	17

# 1 Front

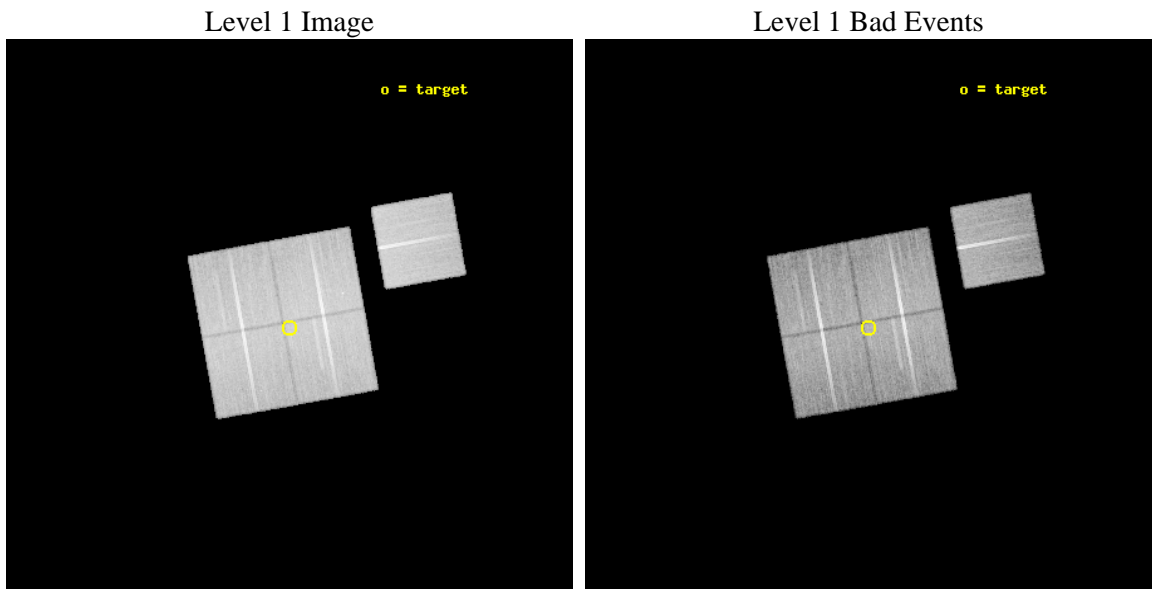
seq_num	800650	Sequence number
obs_id	7932	Observation id
title	A Complete Baryon Census in a Nearby Galaxy Group	Proposal title
observer	Dr. John Mulchaey	Principal investigator
object	NGC2563-P9	Source name
dtycycle	0	&#160
cycle	P	events from which exps? Prim/Second/Both
ra_targ	125.6675	Observer's specified target RA [deg]
dec_targ	21.034417	Observer's specified target Dec [deg]
ra_nom	125.66641725046	Nominal RA [deg]
dec_nom	21.042444792557	Nominal Dec [deg]
roll_nom	79.785894105172	Nominal Roll [deg]
revision	3	Processing version of data
ontime	29983.083325148	Sum of GTIs [s]
livetime	29591.33226828	Livetime [s]
ontime0	29989.24220562	Sum of GTIs [s]
ontime1	29983.001255155	Sum of GTIs [s]
ontime2	29986.183285415	Sum of GTIs [s]
ontime3	29983.083325148	Sum of GTIs [s]
ontime6	29989.201165617	Sum of GTIs [s]
l2events	102780	Number of level 2 events



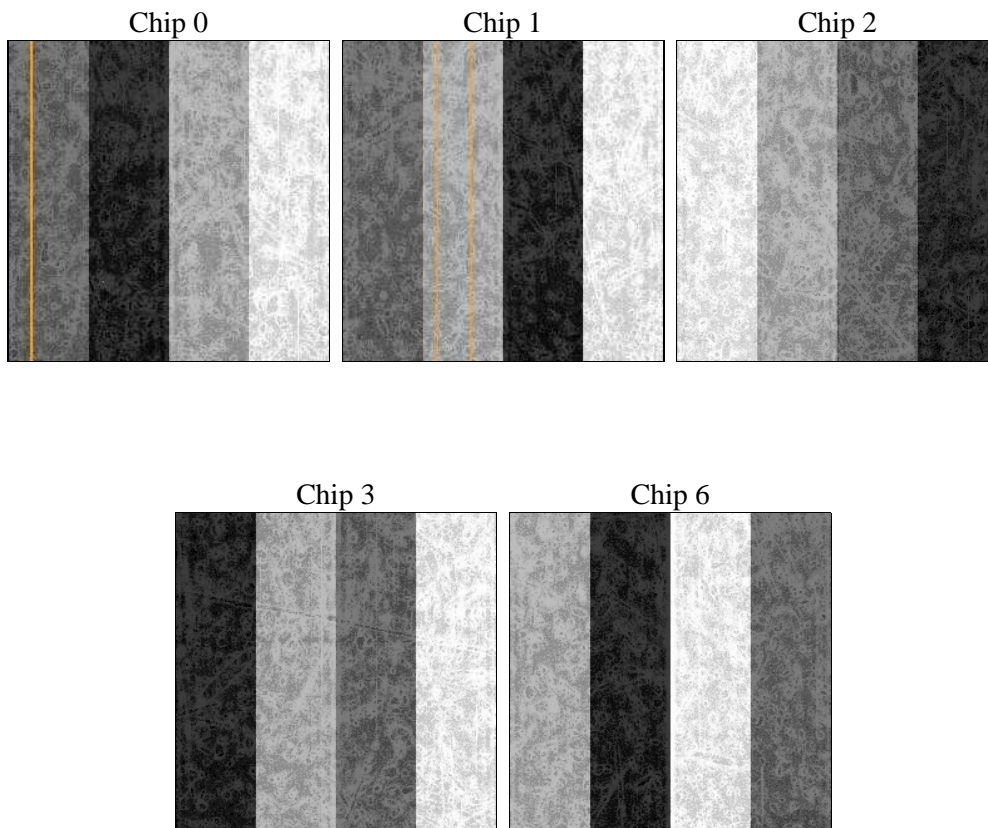
## 2 OBI

### 2.1 OBI

#### 2.1.1 Images



#### 2.1.2 Bias



### 2.1.3 Parameters

obi_num	2	Obi number	sched_exp_time	30000.000000	[s] Scheduled observation exposure time
ascdsver	8.4.4	Processing system revision	ontime	29983.083325148	Sum of GTIs [s]
caldsver	4.4.9	&#160	ontime0	29989.24220562	Sum of GTIs [s]
date	2012-05-06T16:21:35	Date and time of file creation	ontime1	29983.001255155	Sum of GTIs [s]
revision	3	Processing version of data	ontime2	29986.183285415	Sum of GTIs [s]
			ontime3	29983.083325148	Sum of GTIs [s]
			ontime6	29989.201165617	Sum of GTIs [s]
			l1events	1211307	Number of level 1 events

### 2.1.4 Events

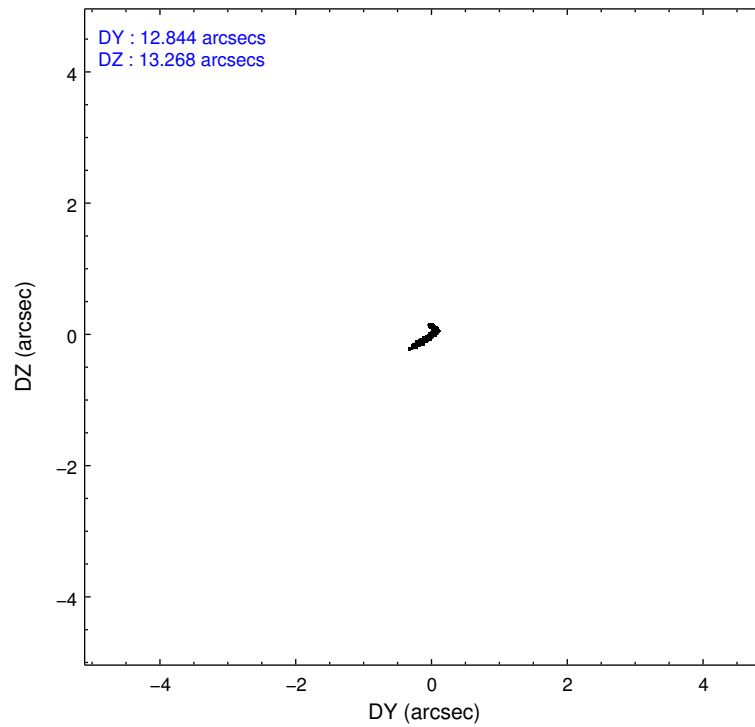
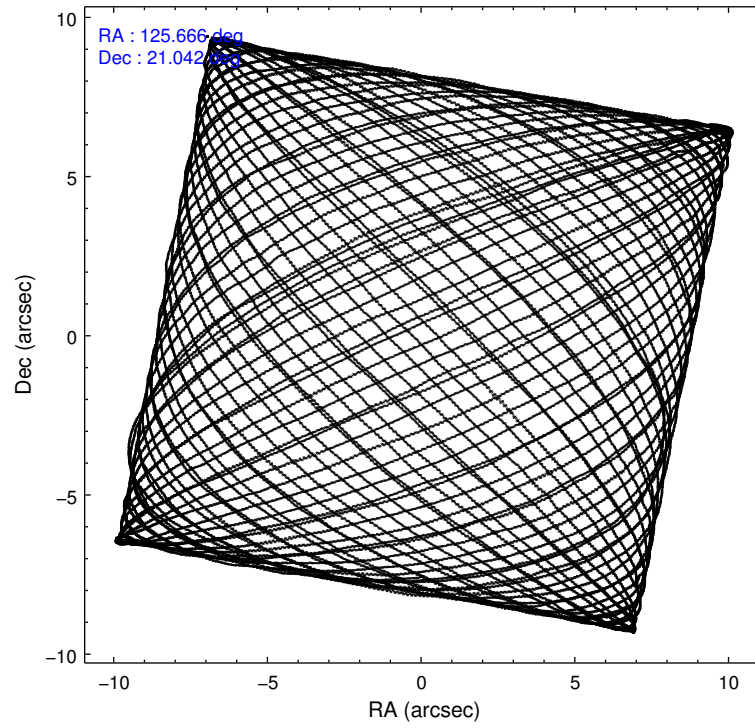
	ccd 0	ccd 1	ccd 2	ccd 3	ccd 6
level 1 events	233979	228265	254443	245343	249277
rejected events	209629	201066	230381	221938	224446
rejected %	89%	88%	90%	90%	90%

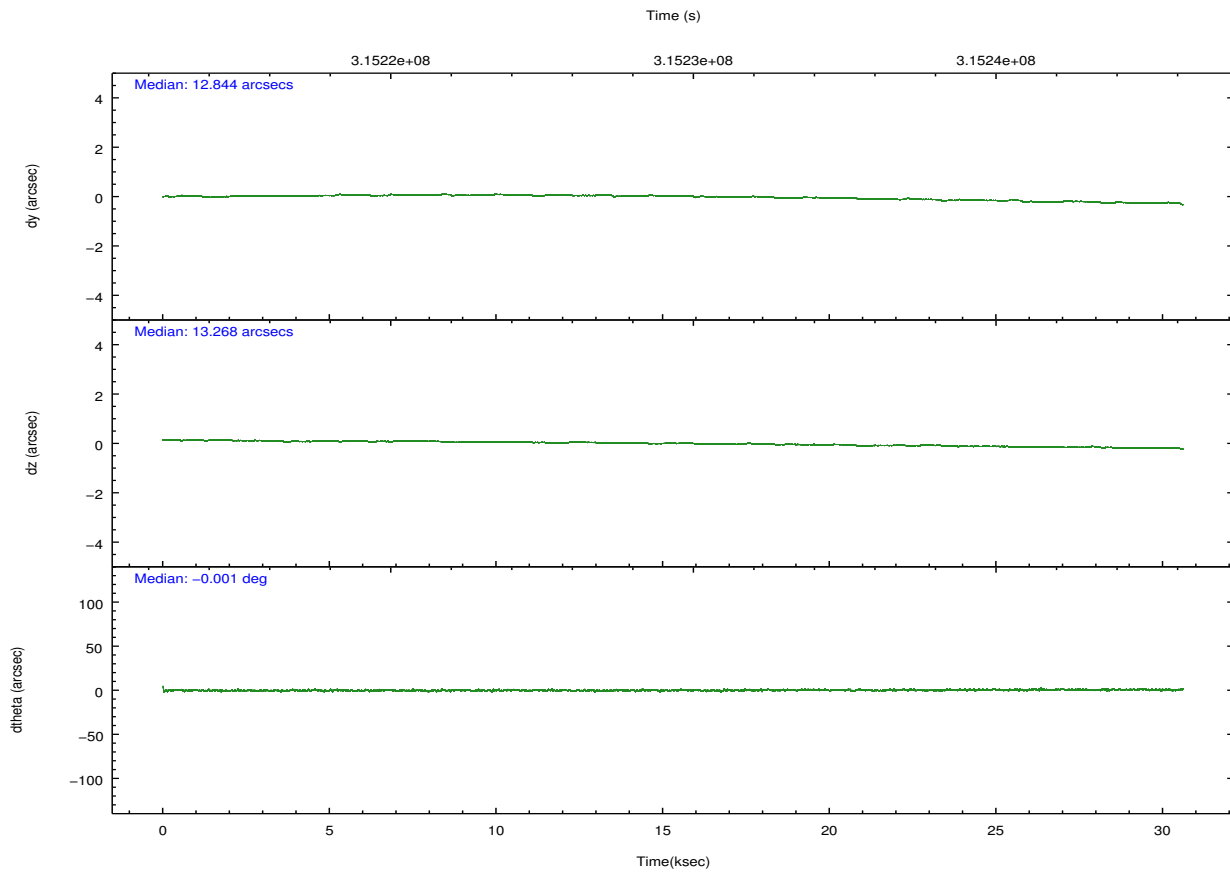
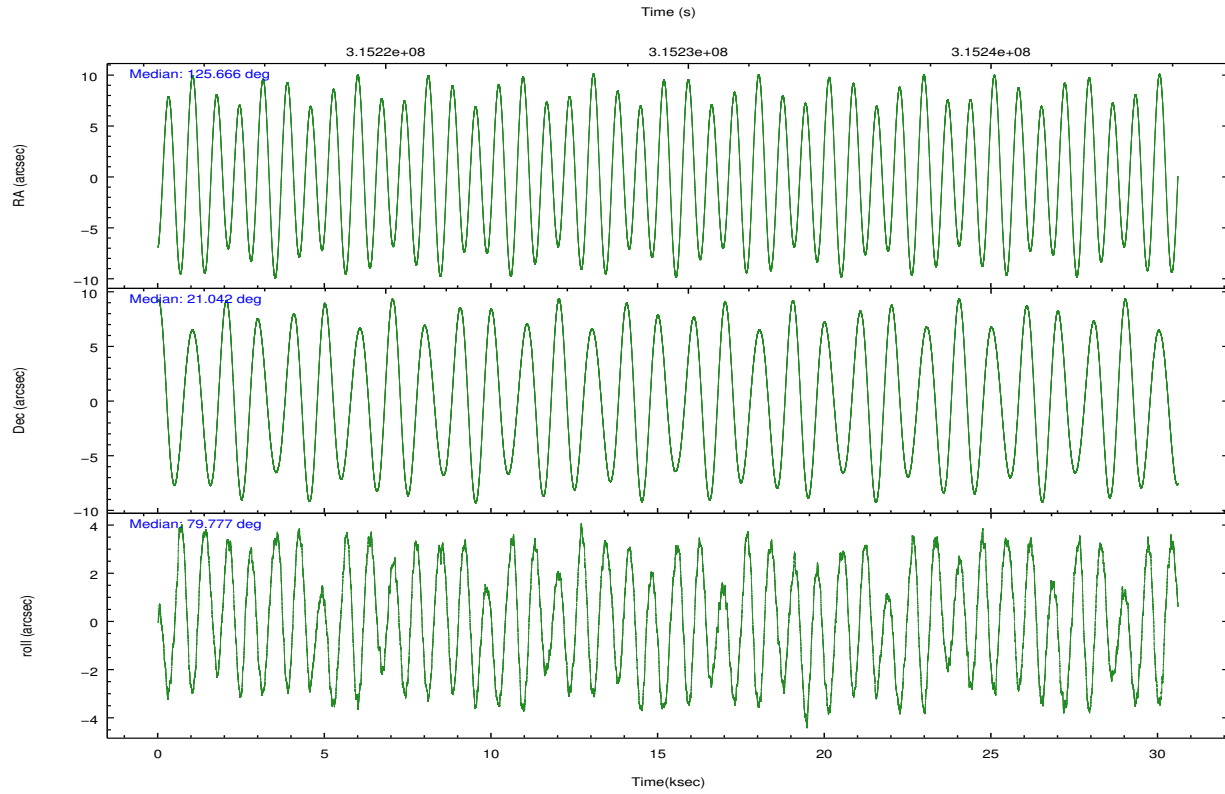
	ccd 0	ccd 1	ccd 2	ccd 3	ccd 6
grade 0 events	8465	9594	8754	8315	8543
	3%	4%	3%	3%	3%
grade 1 events	138	125	135	139	134
	0%	0%	0%	0%	0%
grade 2 events	5893	6234	5675	5046	5337
	2%	2%	2%	2%	2%
grade 3 events	2790	2912	2595	2673	2732
	1%	1%	1%	1%	1%
grade 4 events	2564	2945	2531	2639	2812
	1%	1%	0%	1%	1%
grade 5 events	8580	9495	8081	9862	9648
	3%	4%	3%	4%	3%
grade 6 events	4697	5561	4557	4792	5470
	2%	2%	1%	1%	2%
grade 7 events	200852	191399	222115	211877	214601
	85%	83%	87%	86%	86%

## 2.2 Compared Parameters

Parameter	Planned	Actual	Parameter	Planned	Actual
Instrument	ACIS	ACIS	Obspar format version number	7	7
Detector	ACIS-01236	ACIS-01236	Obspar file type	PREDICTED	ACTUAL
Grating	NONE	NONE	Obspar update status	OVERRIDE	OVERRIDE
Data mode	VFAINT	VFAINT	Number of optional ACIS chips dropped	0	0
Observation mode	POINTING	POINTING	On-chip summing requested	N	N
[deg] Pointing RA	125.6664172116118	125.6664172504604	Subarray requested	NONE	NONE
[deg] Pointing Dec	21.04244483065219	21.04244479255695	Alternating exposures requested	N	N
[deg] Pointing Roll	79.78589410127708	79.78589410517199	[s] Primary exposure time	3.1	3.1
[mm] SIM focus pos	-0.78090834371673	-0.78090834371673			
[mm] SIM defocus	0.001439854621703041	0.001439854621703041			
[mm] SIM translation stage pos	-233.5874344608	-233.5874344608			
[mm] SIM translation stage offset	-0.005028630631784381	-0.005028630631784381			
[s] Observation start time (MET)	315214030.184	315214030.184			
Observation start date	2007-12-28T07:36:05	2007-12-28T07:27:10			
[s] Observation end time (MET)	315244630.184	315244630.184			
Observation end date	2007-12-28T15:56:05	2007-12-28T15:57:10			
Read mode	TIMED	TIMED			

## 2.3 Aspect



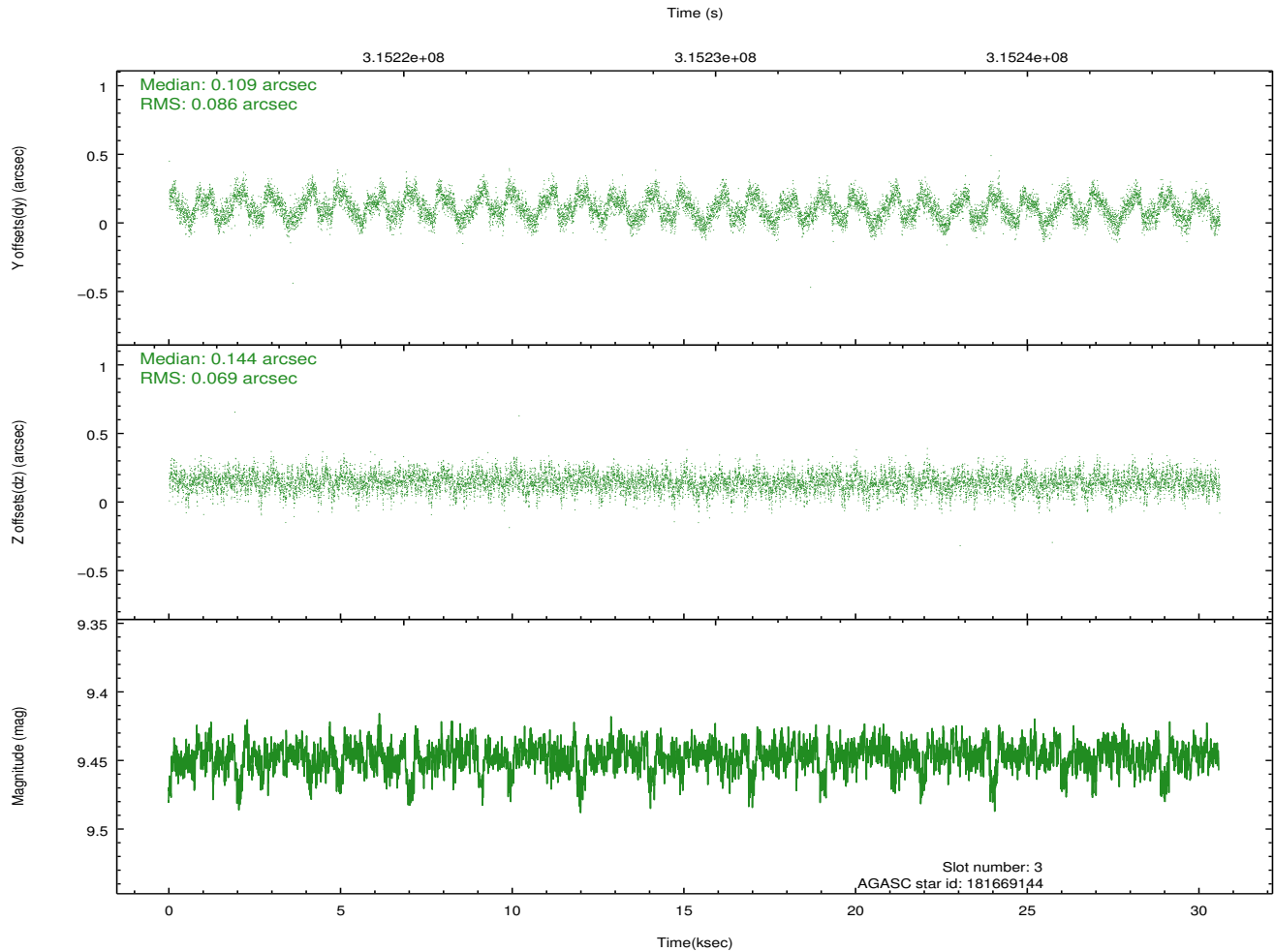
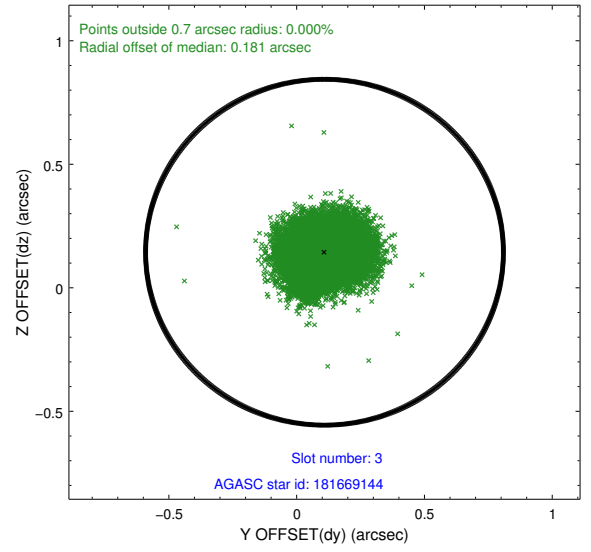
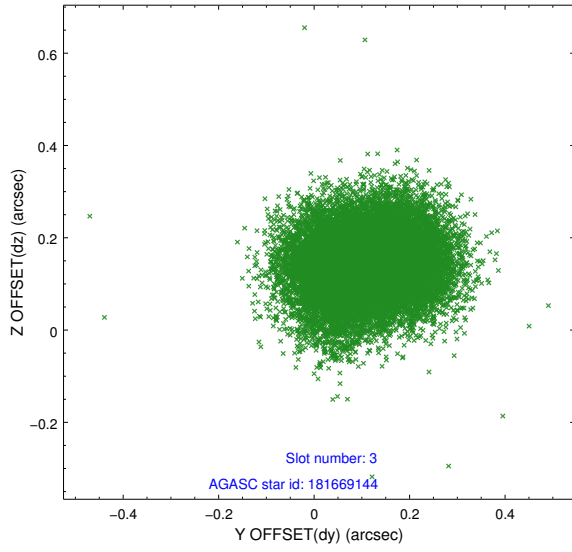


### Slot Statistics

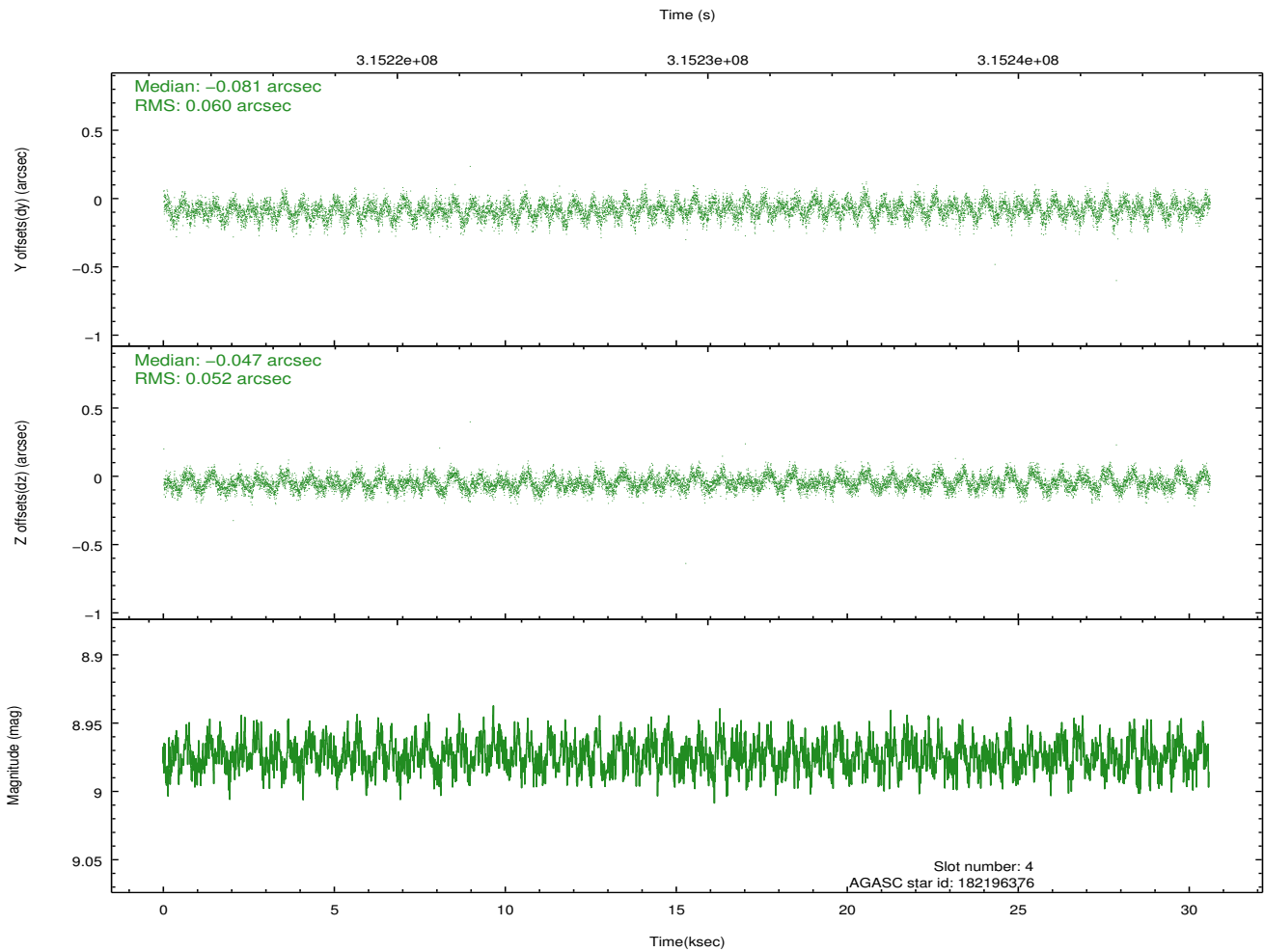
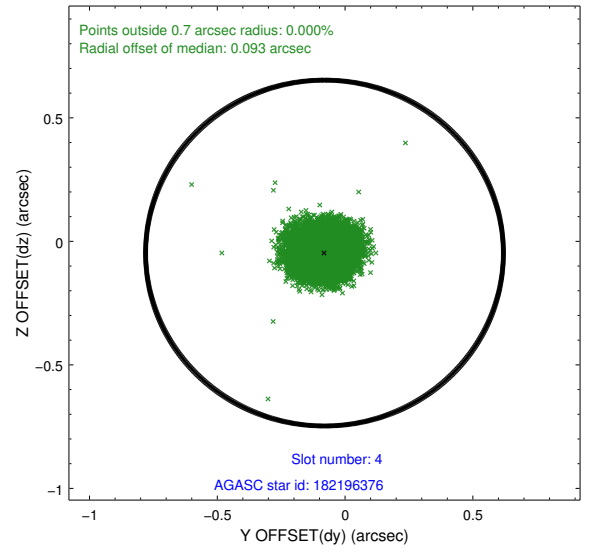
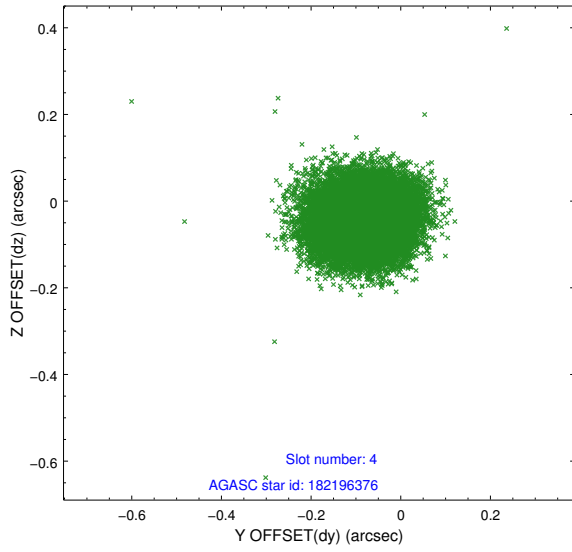
slot	status	id	mag	n_pts	med_dy	med_dz	dr1	dr2	ra	dec	mean_y	mean_z
0	FID	ACIS-I-1	7.24	7464	-0.011	0.015	0.011	0.018	0.000000	0.000000	926.70	-836.80
1	FID	ACIS-I-4	7.17	7462	0.201	0.019	0.010	0.016	0.000000	0.000000	2147.02	1062.96
2	FID	ACIS-I-5	7.22	7463	-0.289	0.037	0.011	0.018	0.000000	0.000000	-1821.47	1060.96
3	GUIDE	181669144	9.45	14908	0.109	0.144	0.119	0.184	125.735610	20.569434	-1546.66	-487.30
4	GUIDE	182196376	8.97	14918	-0.081	-0.047	0.085	0.135	125.557315	21.603160	2004.56	774.88
5	GUIDE	182202928	9.08	14914	-0.023	-0.068	0.089	0.143	125.551699	21.434953	1405.87	684.09
6	GUIDE	182332968	8.69	14916	-0.042	0.241	0.089	0.144	126.434106	21.190606	1082.90	-2385.96
7	GUIDE	182195136	8.58	14918	0.037	-0.272	0.091	0.147	124.931899	20.918080	-796.24	2398.94

## 2.4 Star Slots

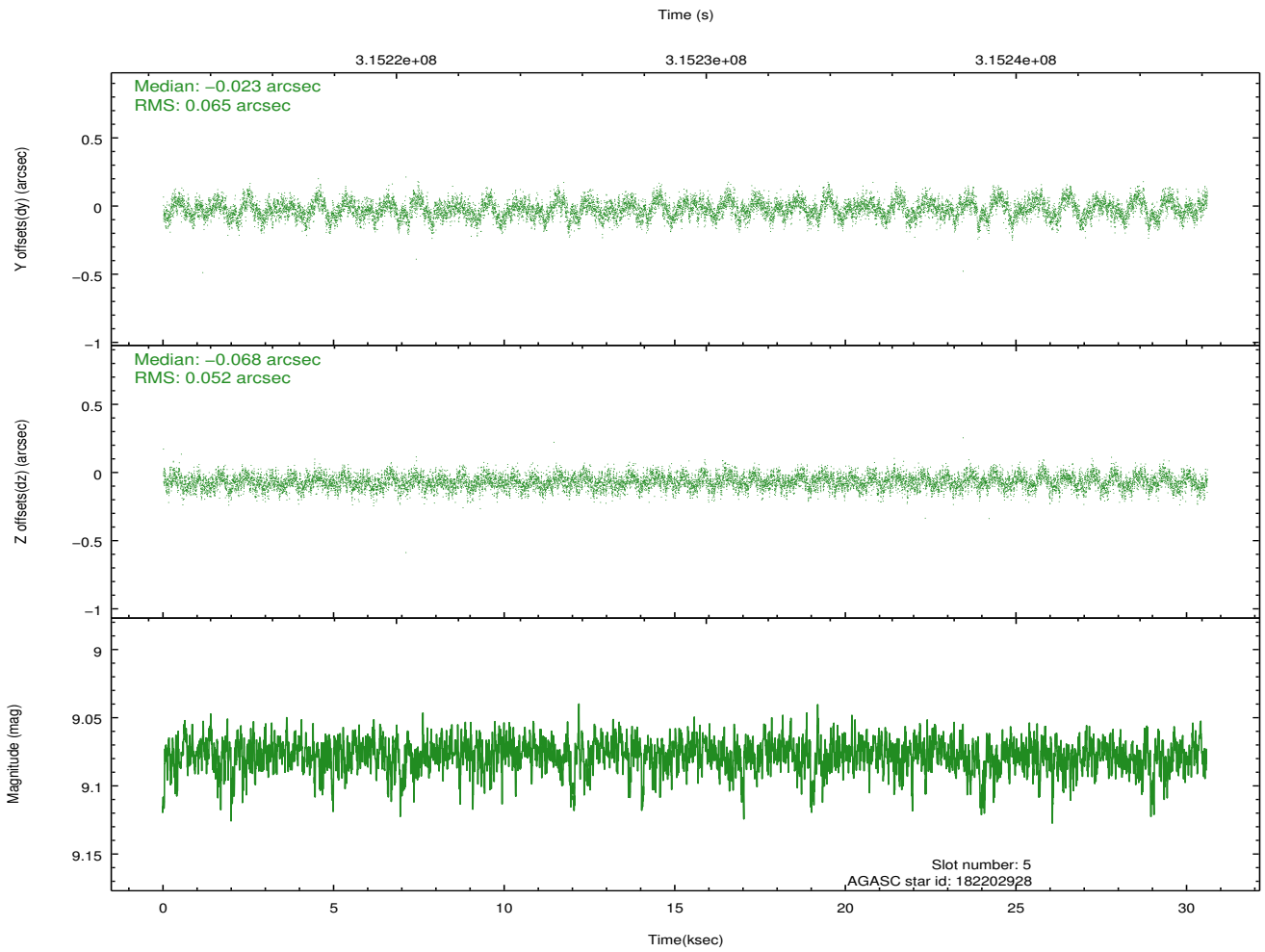
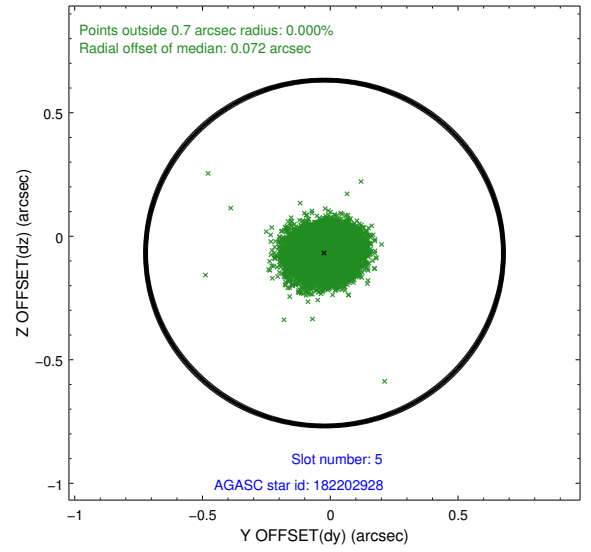
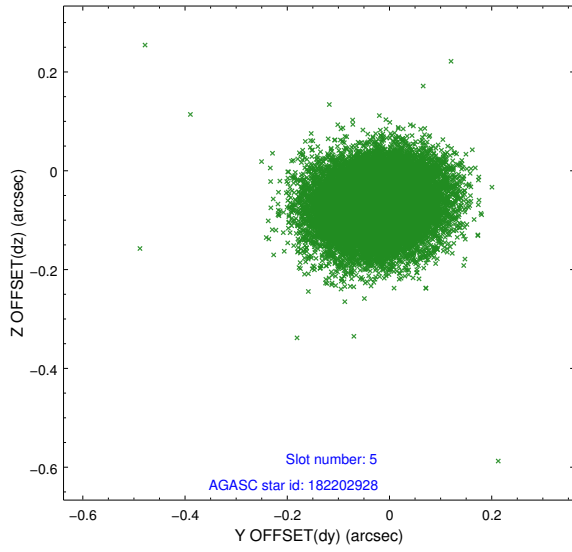
### 2.4.1 Slot 3



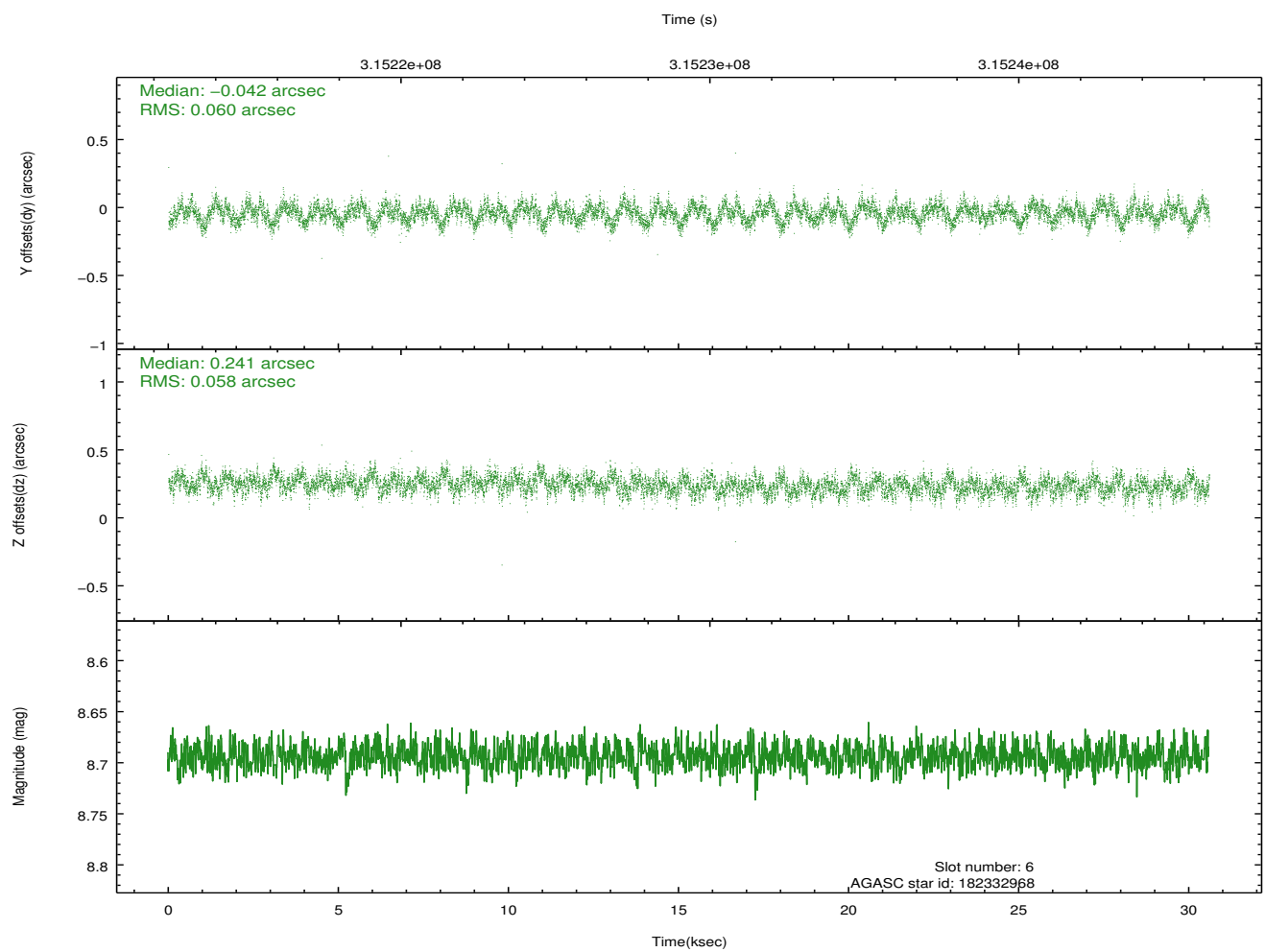
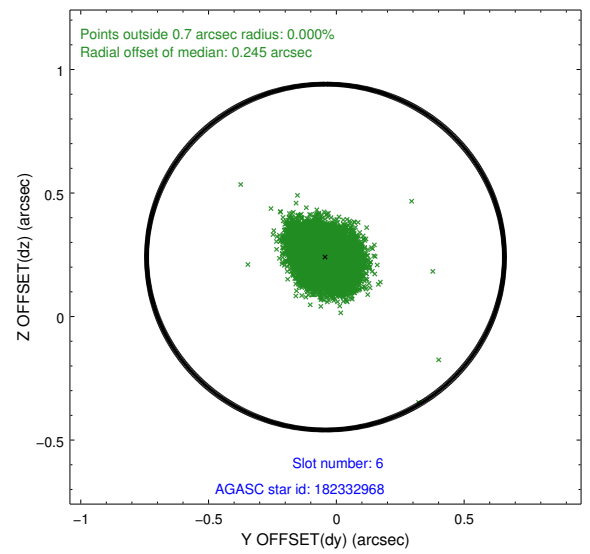
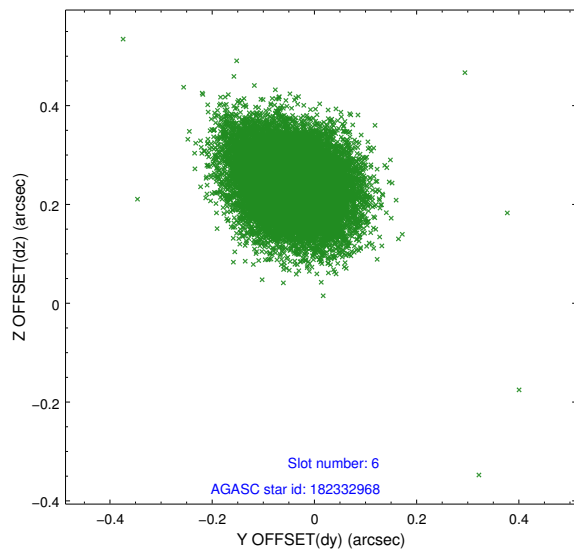
### 2.4.2 Slot 4



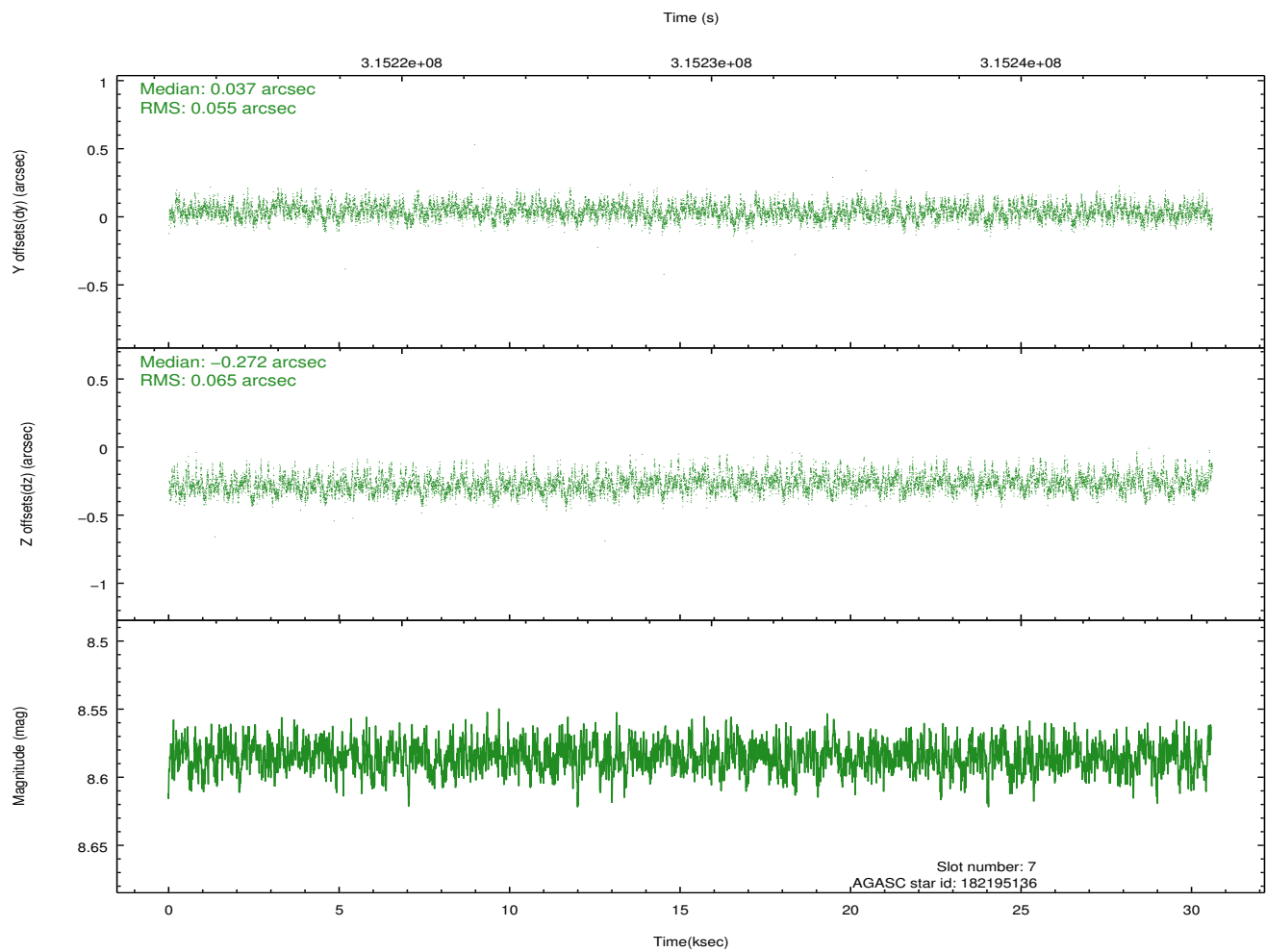
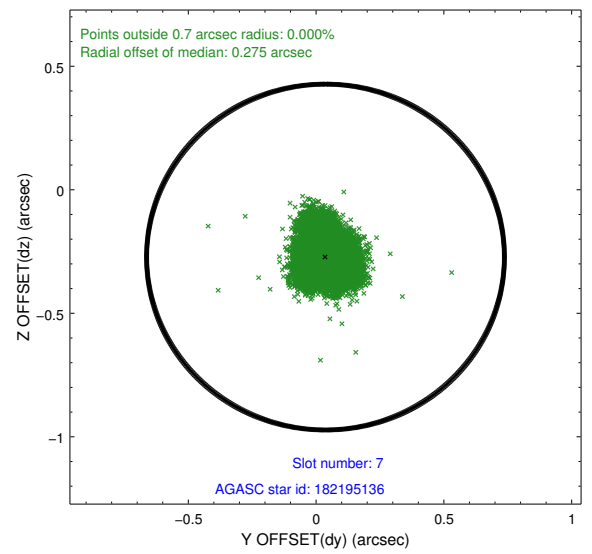
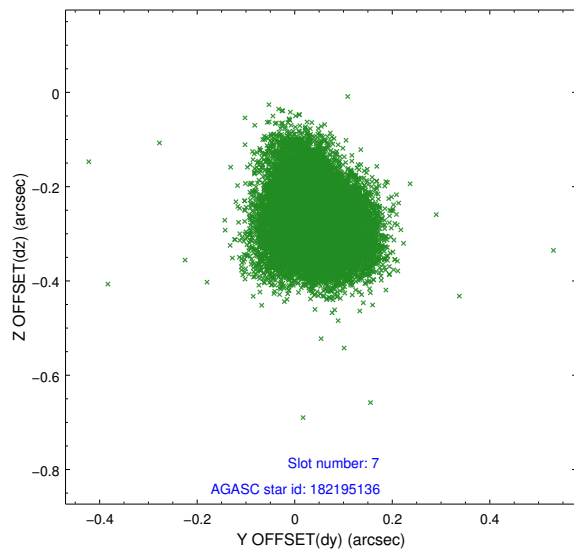
### 2.4.3 Slot 5



## 2.4.4 Slot 6

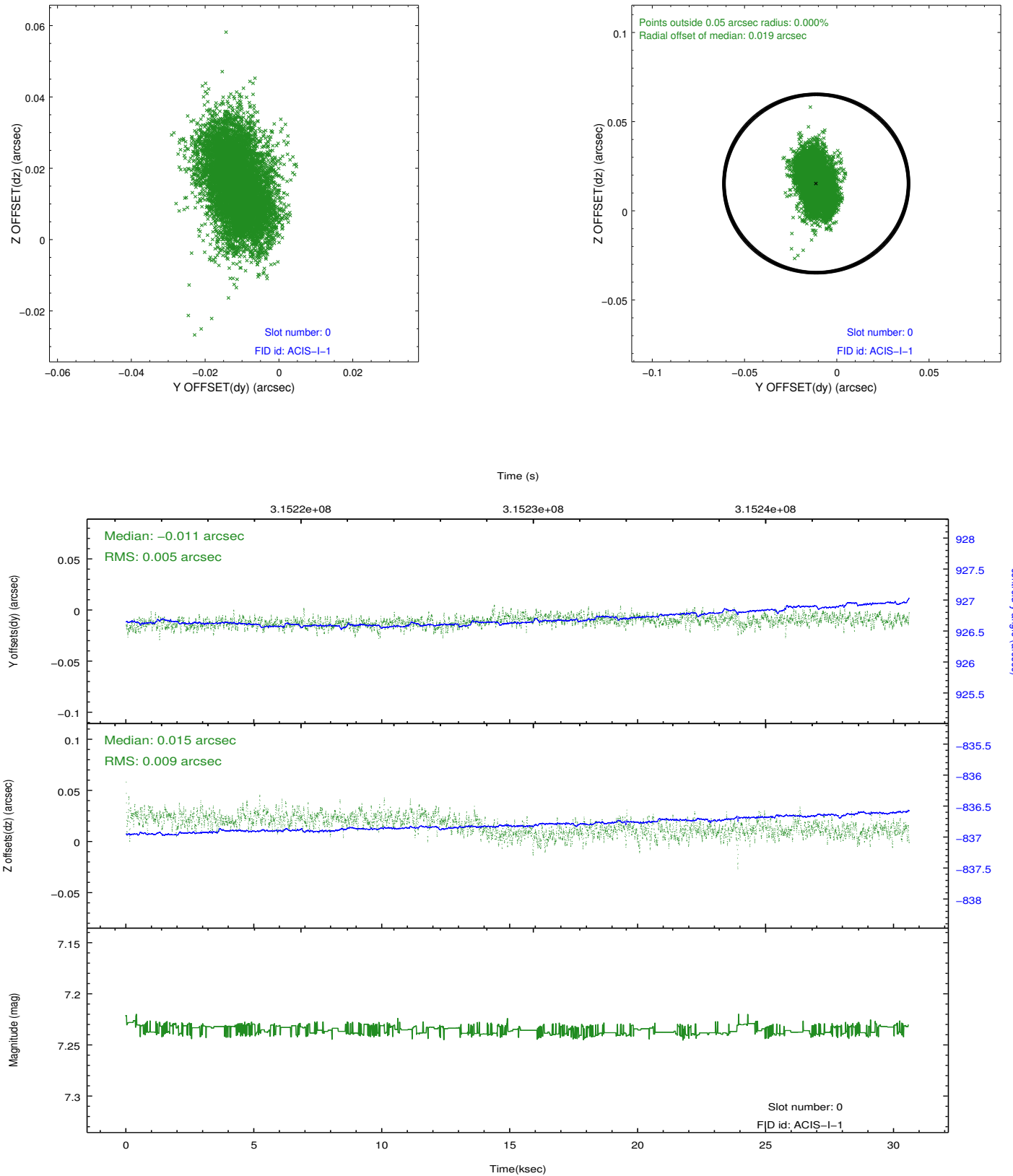


## 2.4.5 Slot 7

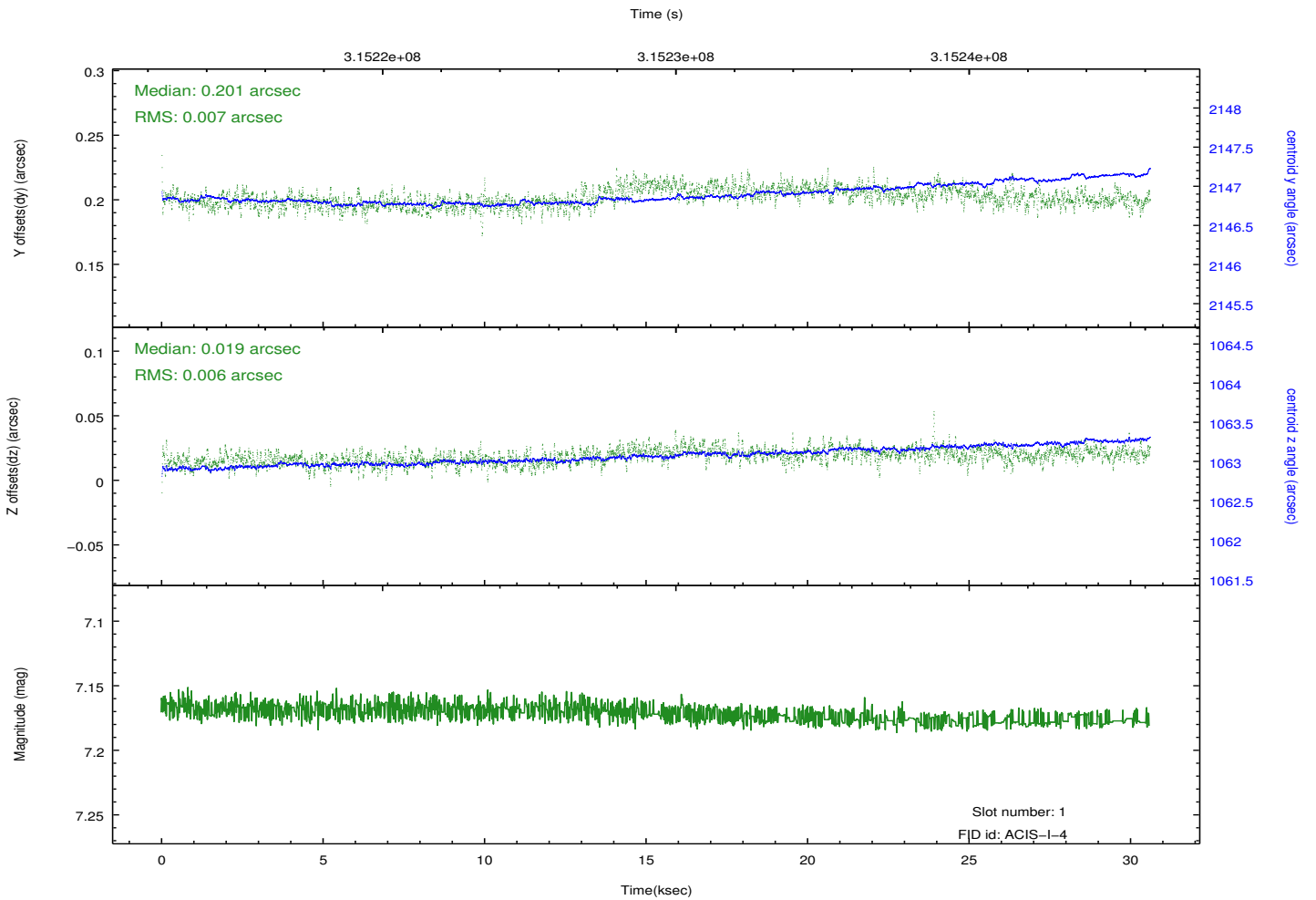
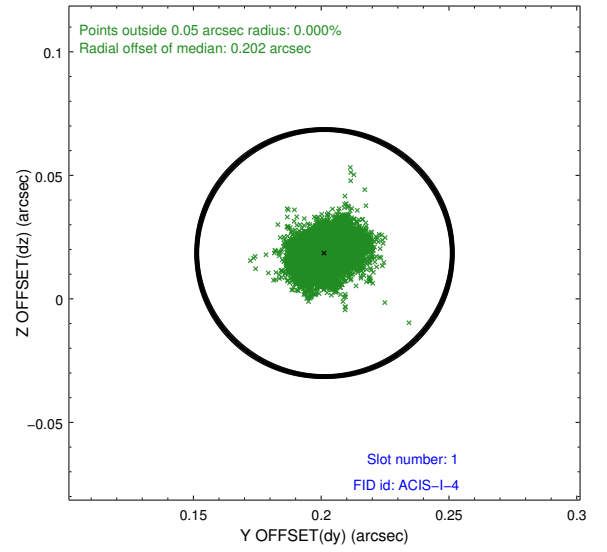
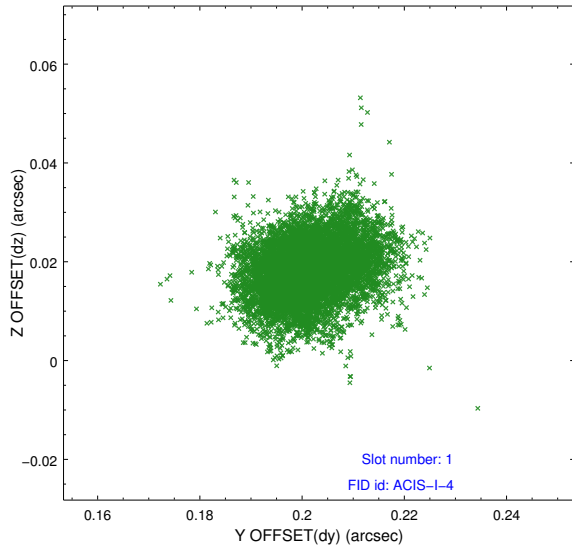


## 2.5 FID Slots

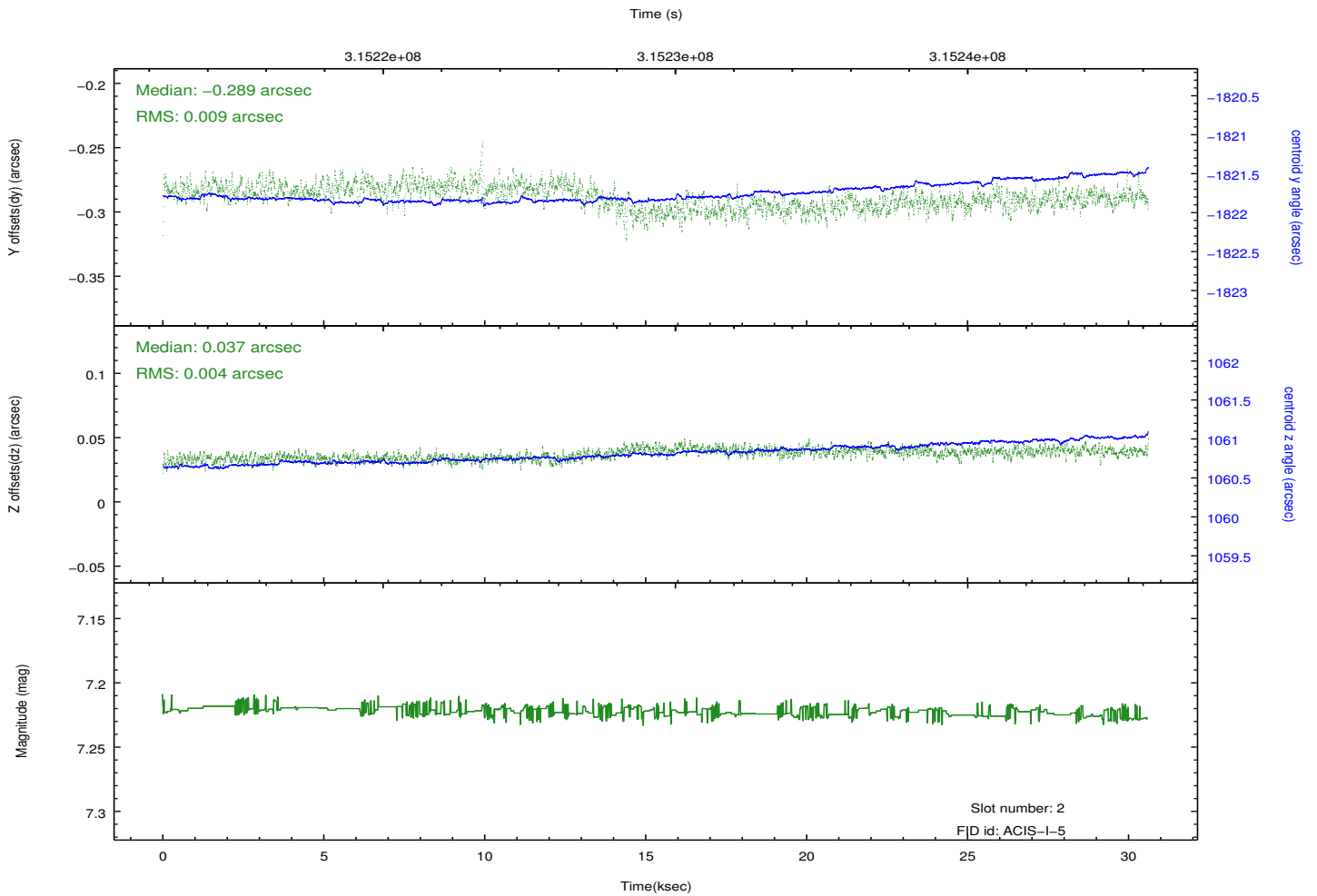
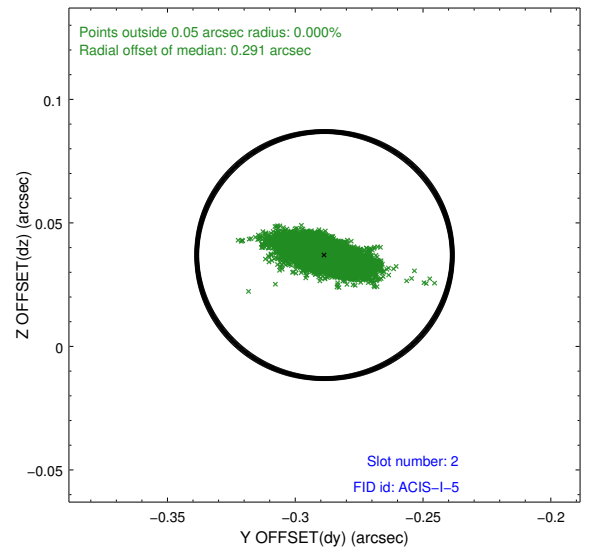
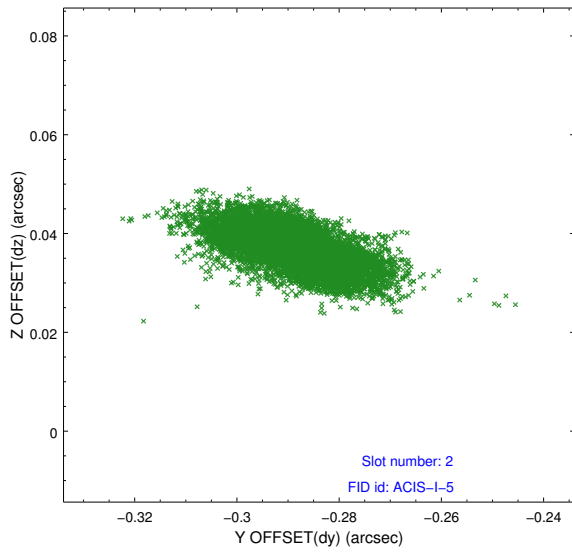
### 2.5.1 Slot 0



## 2.5.2 Slot 1



### 2.5.3 Slot 2



# A Summary

## A.1 Status

V&V Scientist	Jen Lauer
V&V Date (YYYY-MM-DD)	2012.05.08
V&V Edition	1
V&V Disposition and Status	OK
V&V Charge Time	29.9831182

## A.2 Comments