

V&V Reference Report

L2 ASCDS Version : 8.1.1

Observation 802 - L2 Version 4
Chandra X-Ray Center

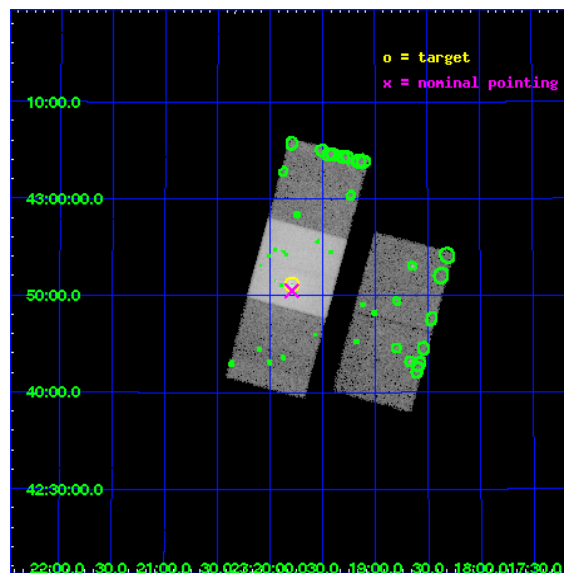
L2 Processing Date : Nov 25 2009

Contents

1	Front	2
2	OBI	3
2.1	OBI	3
2.1.1	Images	3
2.1.2	Bias	3
2.1.3	Parameters	4
2.1.4	Events	4
2.2	Compared Parameters	5
2.3	Aspect	6
2.4	Star Slots	9
2.4.1	Slot 3	9
2.4.2	Slot 4	10
2.4.3	Slot 5	11
2.4.4	Slot 6	12
2.4.5	Slot 7	13
2.5	FID Slots	14
2.5.1	Slot 0	14
2.5.2	Slot 1	15
2.5.3	Slot 2	16
3	Point Sources	17
A	Summary	18
A.1	Status	18
A.2	Comments	18

1 Front

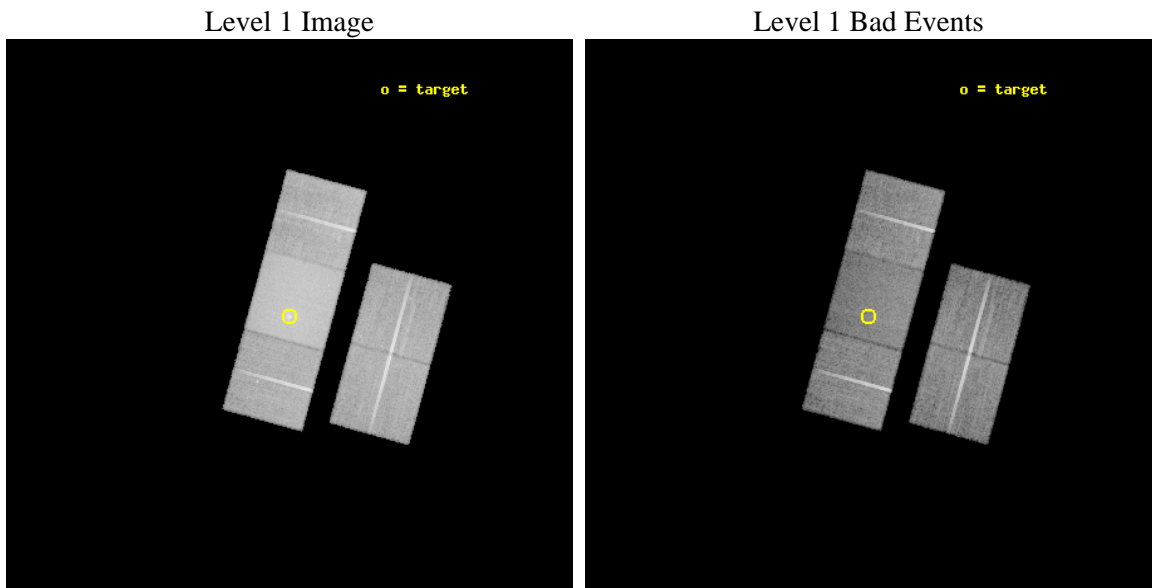
seq_num	600105	Sequence number
obs_id	802	Observation id
title	THE EVOLUTION OF ISOLATED ELLIPTICAL GALAXIES	Proposal title
observer	Prof. Ann Zabludoff	Principal investigator
object	NGC 7618	Source name
dtcycle	0	
cycle	P	events from which exps? Prim/Second/Both
ra_targ	349.947083	Observer's specified target RA
dec_targ	42.852139	Observer's specified target Dec
ra_nom	349.94816450731	Nominal RA
dec_nom	42.841970457601	Nominal Dec
roll_nom	285.25846339702	Nominal Roll
revision	4	Processing version of data
ontime	18435.159056962	Sum of GTIs [s]
livetime	18201.721972662	Livetime [s]
ontime2	18438.400017172	Sum of GTIs [s]
ontime3	18438.400017172	Sum of GTIs [s]
ontime6	18435.159056962	Sum of GTIs [s]
ontime7	18435.159056962	Sum of GTIs [s]
ontime8	18438.400017172	Sum of GTIs [s]
l2events	263112	Number of level 2 events



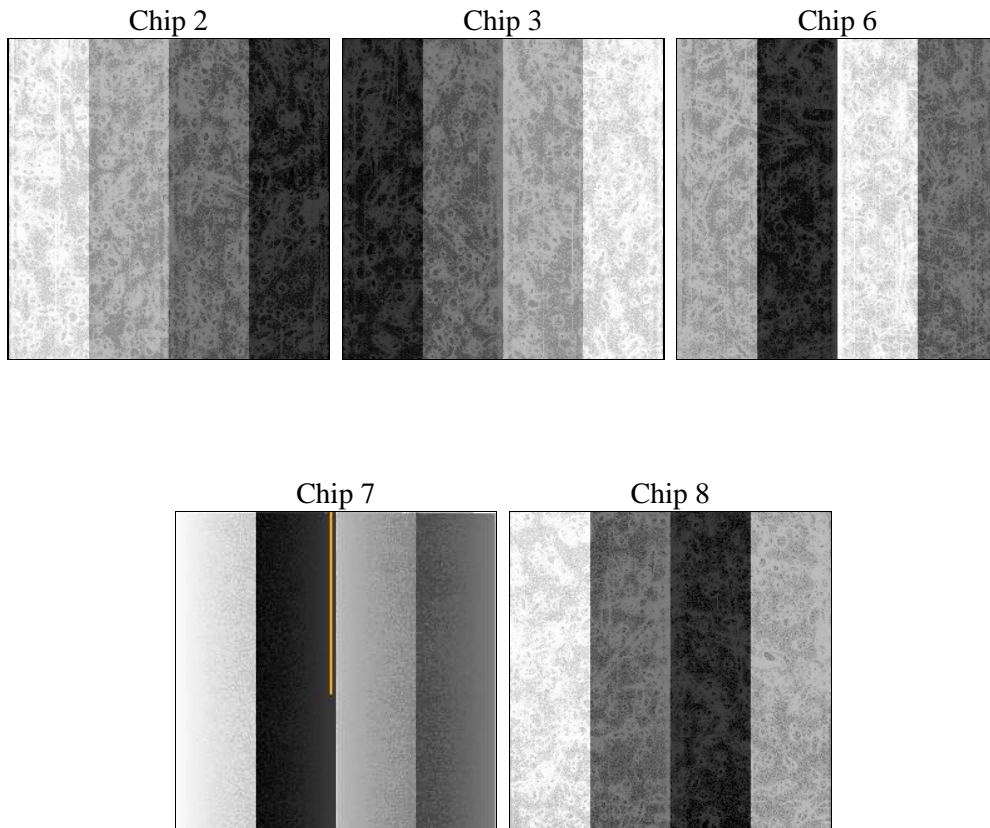
2 OBI

2.1 OBI

2.1.1 Images



2.1.2 Bias



2.1.3 Parameters

obi_num	0	Obi number	sched_exp_time	18668.331000	Scheduled observation exposure time
ascdsver	8.1.1	ASCDS version number	ontime	18435.159056962	Sum of GTIs [s]
caldbver	4.1.4	 	ontime2	18438.400017172	Sum of GTIs [s]
date	2009-11-25T14:52:18	Date and time of file creation	ontime3	18438.400017172	Sum of GTIs [s]
revision	3	Processing version of data	ontime6	18435.159056962	Sum of GTIs [s]
			ontime7	18435.159056962	Sum of GTIs [s]
			ontime8	18438.400017172	Sum of GTIs [s]
			l1events	1014880	Number of level 1 events

2.1.4 Events

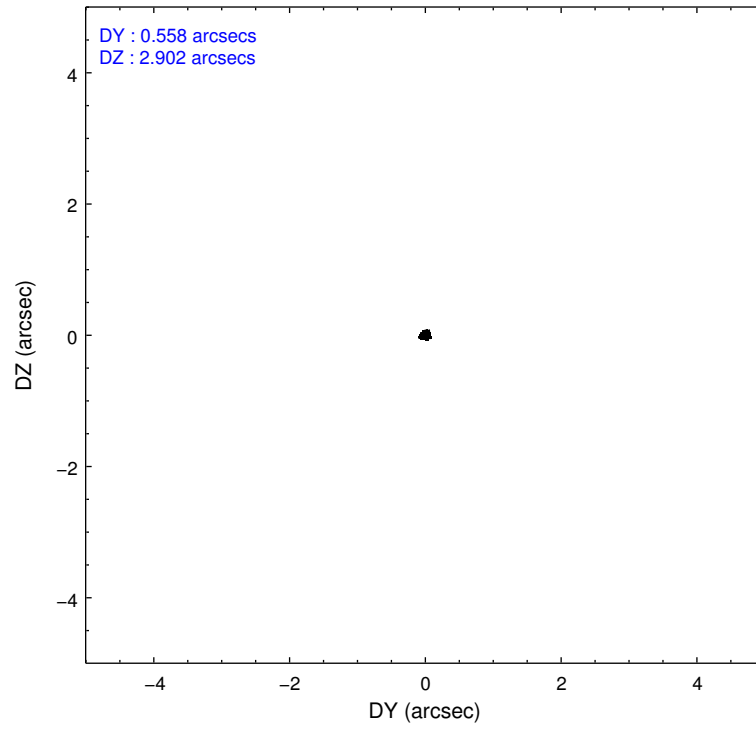
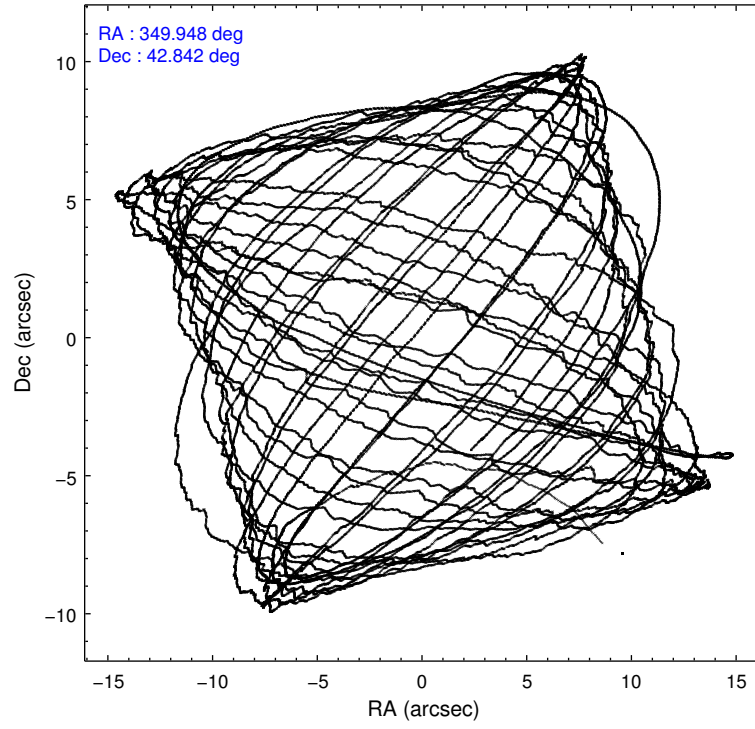
	ccd 2	ccd 3	ccd 6	ccd 7	ccd 8
level 1 events	166752	164556	170805	312685	200082
rejected events	149900	146014	149567	121279	161902
rejected %	89%	88%	87%	38%	80%

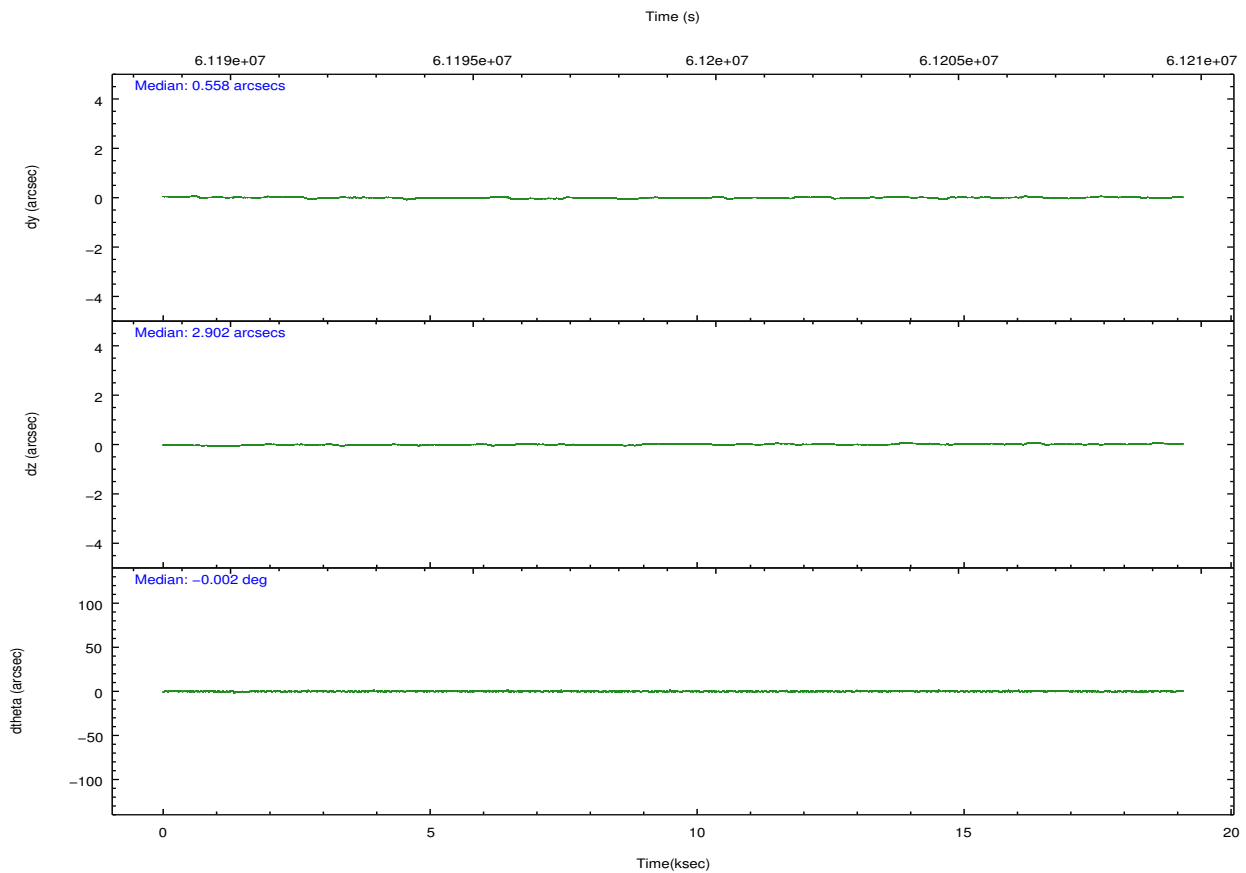
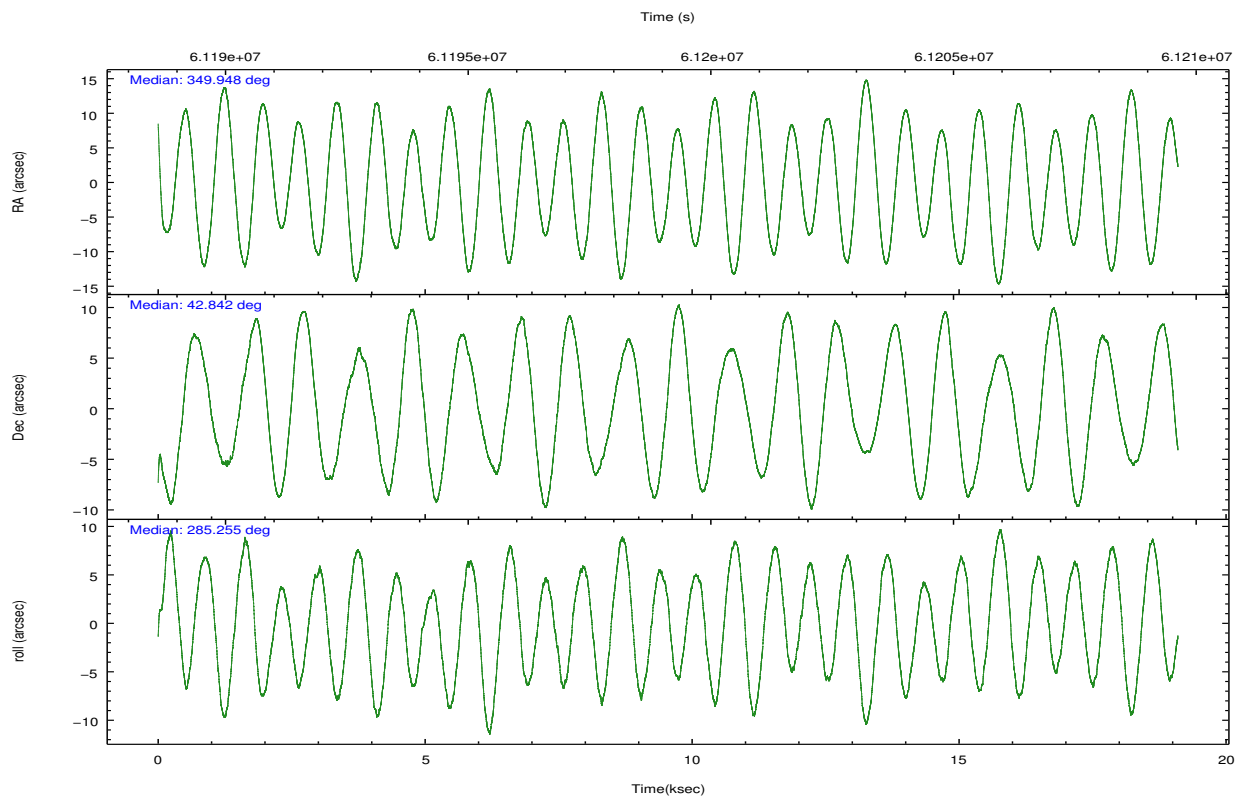
	ccd 2	ccd 3	ccd 6	ccd 7	ccd 8
grade 0 events	4333	5450	6104	21198	10276
	2%	3%	3%	6%	5%
grade 1 events	37	36	35	116	64
	0%	0%	0%	0%	0%
grade 2 events	6717	7223	8603	39292	12317
	4%	4%	5%	12%	6%
grade 3 events	1050	1059	1079	13473	2847
	0%	0%	0%	4%	1%
grade 4 events	1040	968	1057	12402	2680
	0%	0%	0%	3%	1%
grade 5 events	2776	2973	3308	11664	4526
	1%	1%	1%	3%	2%
grade 6 events	3724	3856	4433	105432	10109
	2%	2%	2%	33%	5%
grade 7 events	147075	142991	146186	109108	157263
	88%	86%	85%	34%	78%

2.2 Compared Parameters

Parameter	Planned	Actual	Parameter	Planned	Actual
Instrument	ACIS	ACIS	Obspar format version number	6	6
Detector	ACIS-23678	ACIS-23678	Obspar file type	PREDICTED	ACTUAL
Grating	NONE	NONE	Obspar update status	NONE	UPDATED
Data mode	FAINT	FAINT	Number of optional ACIS chips dropped	0	0
Observation mode	POINTING	POINTING	On-chip summing requested	N	N
Pointing RA	349.921523	349.9481645073091	Subarray requested	NONE	NONE
Pointing Dec	42.861410	42.84197045760073	Alternating exposures requested	N	N
Pointing Roll	285.119951	285.2584633970158	Primary exposure time	0.000000	3.2
SIM focus pos (mm)	-0.684267	-0.6828225247311905			
SIM defocus (mm)	0	0.001444936568705701			
SIM translation stage pos (mm)	-190.132523	-190.1425803651734			
SIM translation stage offset (mm)	0	0.01005778216563158			
Observation start time	61190000.184000	61188604.929672			
Observation start date	1999-12-10T05:12:16	1999-12-10T04:50:04			
Observation end time	61208668.184000	61209105.442914			
Observation end date	1999-12-10T10:23:24	1999-12-10T10:31:45			
Read mode	TIMED	TIMED			

2.3 Aspect



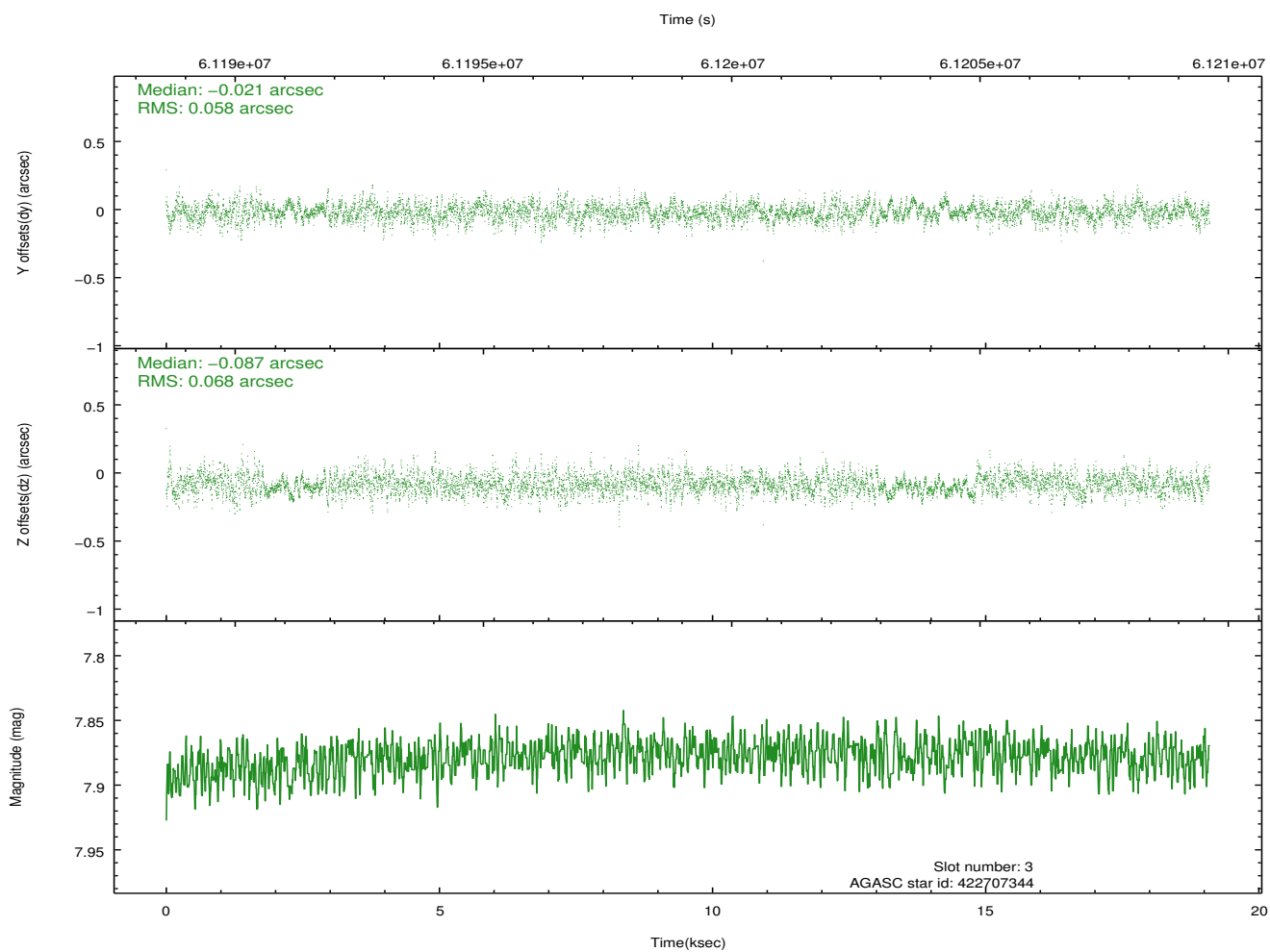
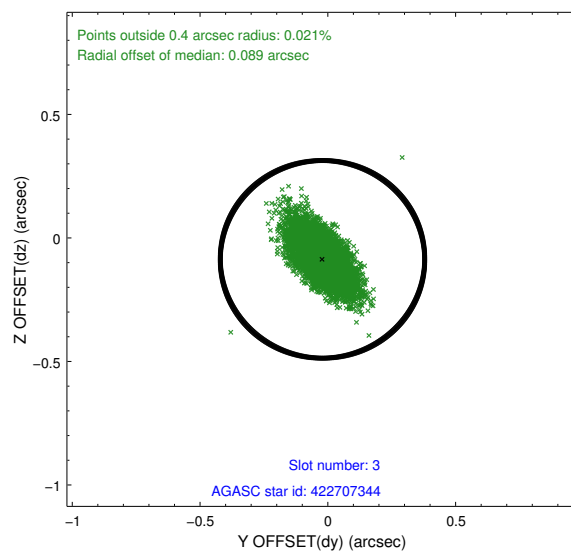
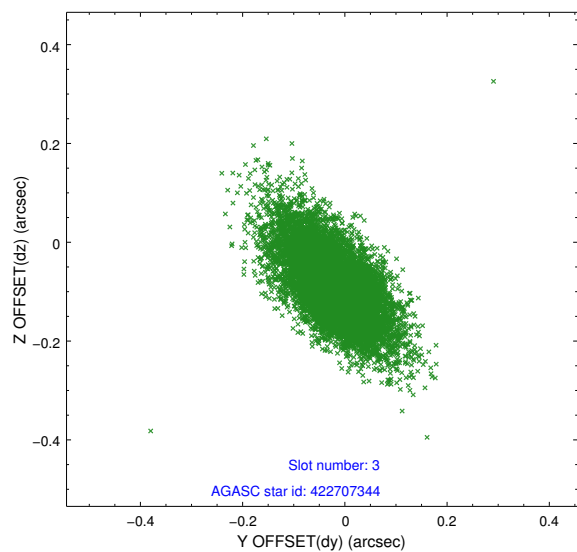


Slot Statistics

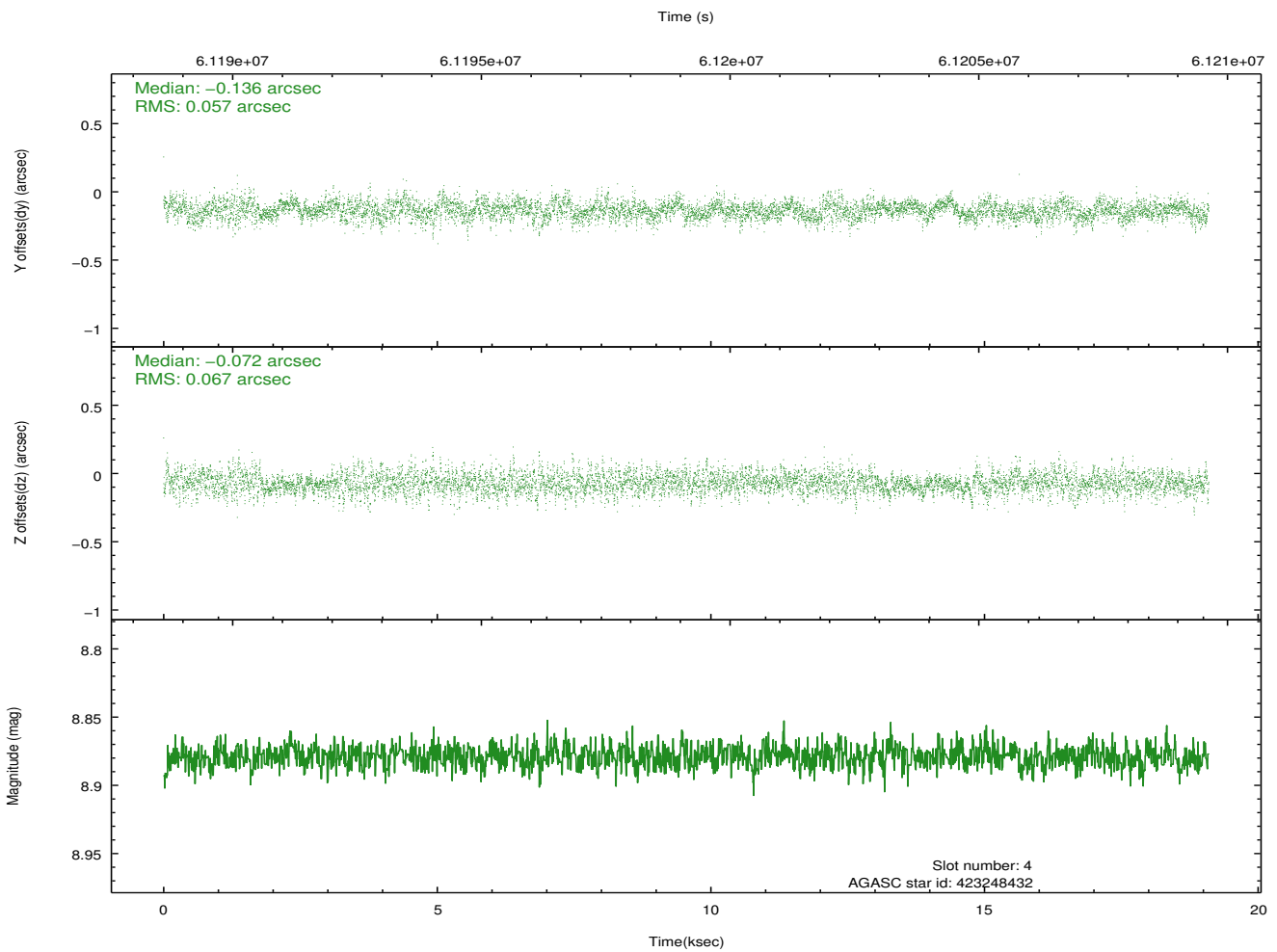
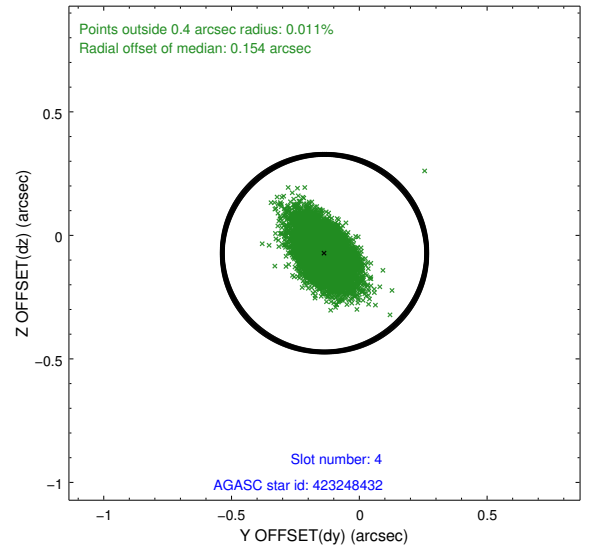
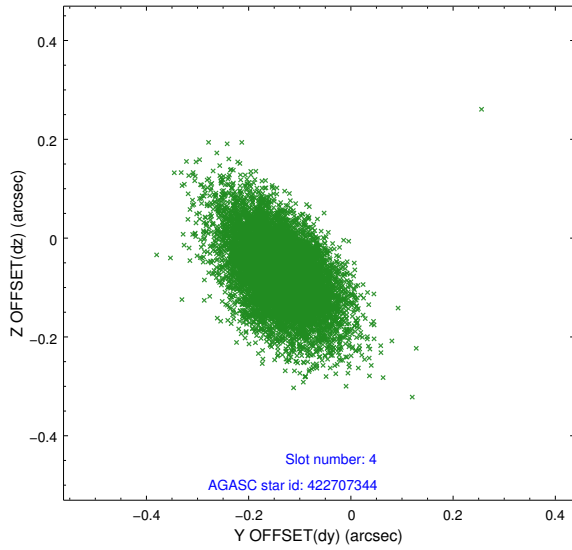
slot	status	id	mag	n_pts	med_dy	med_dz	dr1	dr2	ra	dec	mean_y	mean_z
0	FID	ACIS-S-3	7.36	9318	0.016	-0.059	0.007	0.012	0.000000	0.000000	60.02	-1853.03
1	FID	ACIS-S-4	7.22	9317	0.013	0.021	0.006	0.010	0.000000	0.000000	2160.24	184.50
2	FID	ACIS-S-5	7.24	9317	-0.058	0.048	0.006	0.011	0.000000	0.000000	-1806.00	178.36
3	GUIDE	422707344	7.88	9316	-0.021	-0.087	0.090	0.163	349.968942	42.963598	-321.84	217.37
4	GUIDE	423248432	8.88	9314	-0.136	-0.072	0.090	0.161	349.086899	43.199426	-1755.87	-1793.51
5	GUIDE	423244304	9.50	9310	-0.053	0.040	0.114	0.195	349.595736	43.184892	-1348.31	-520.71
6	GUIDE	424419832	9.55	9308	0.284	0.008	0.108	0.187	350.290946	42.320200	2136.23	442.66
7	GUIDE	424415000	9.61	9303	-0.074	0.108	0.142	0.227	350.679481	42.595817	1439.14	1693.26

2.4 Star Slots

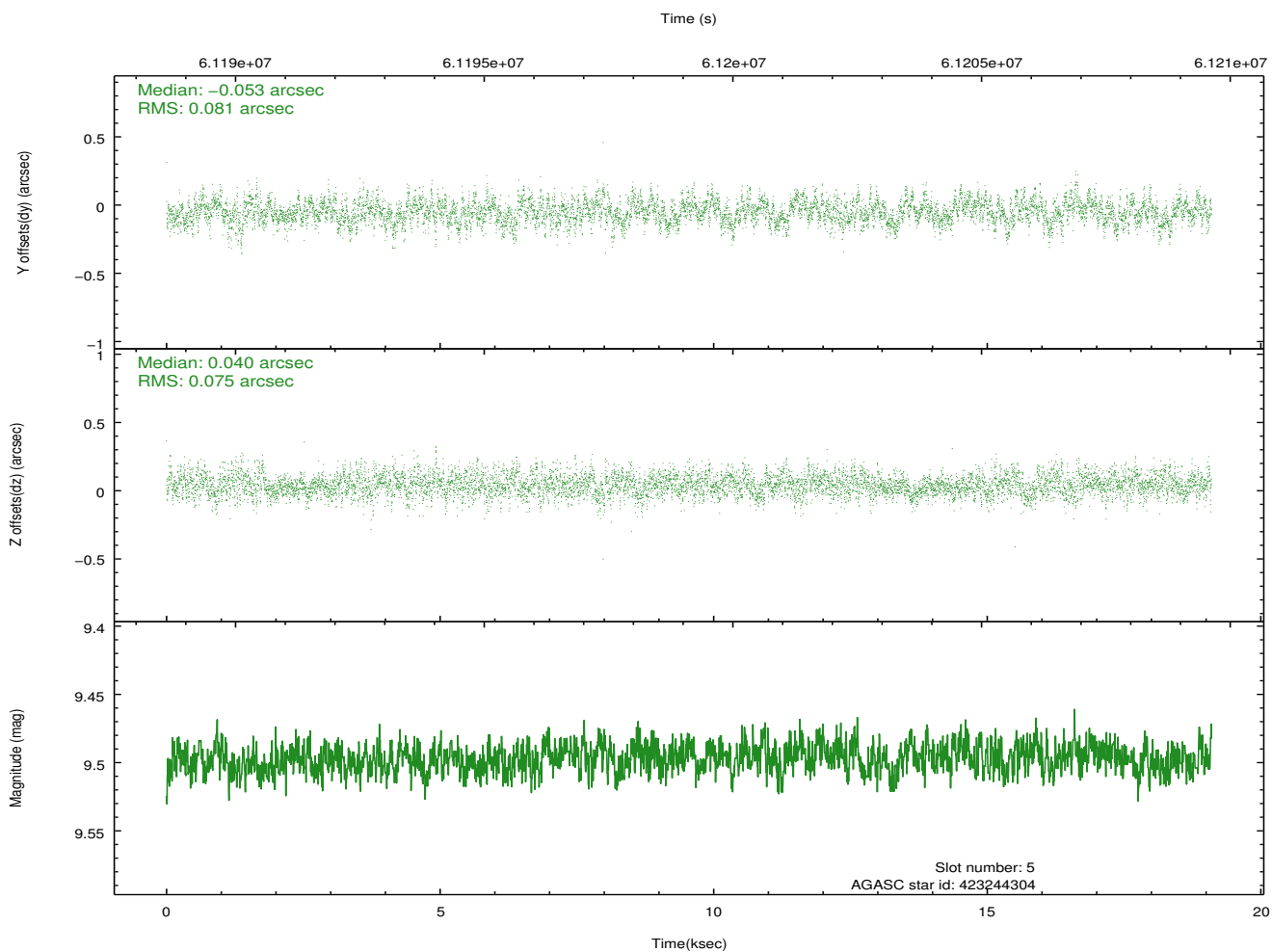
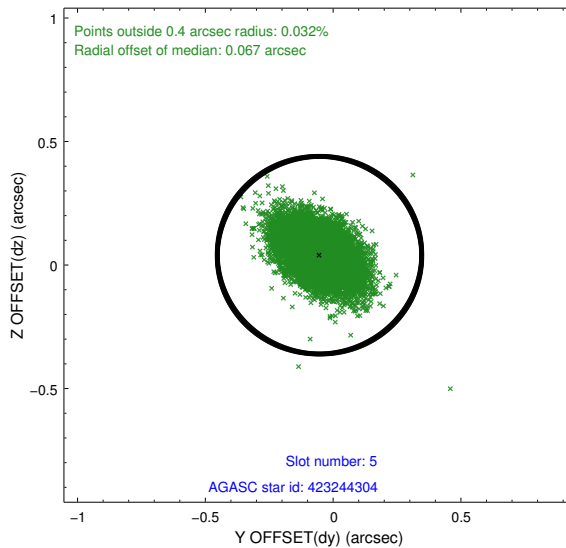
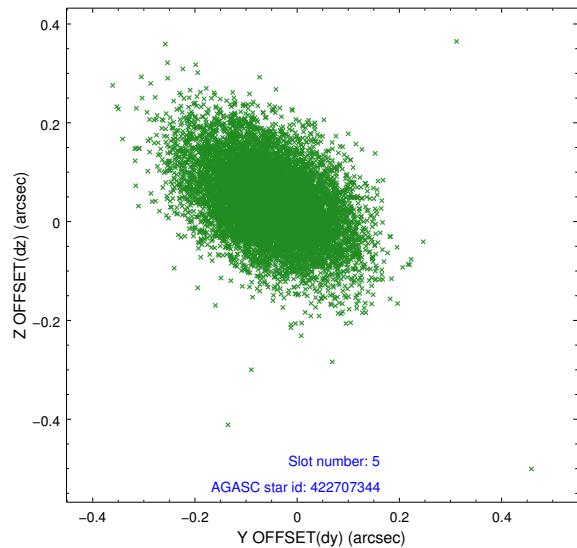
2.4.1 Slot 3



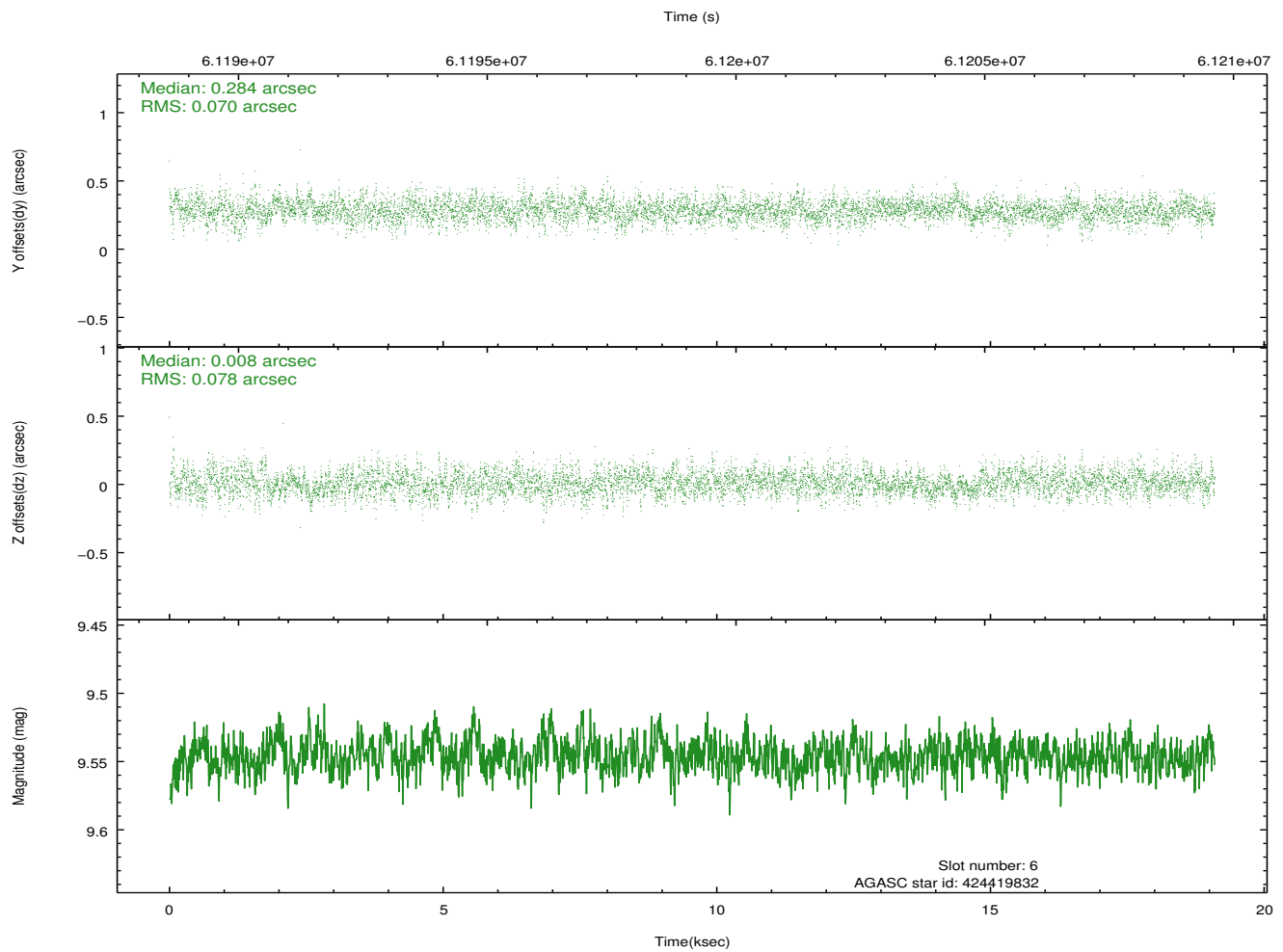
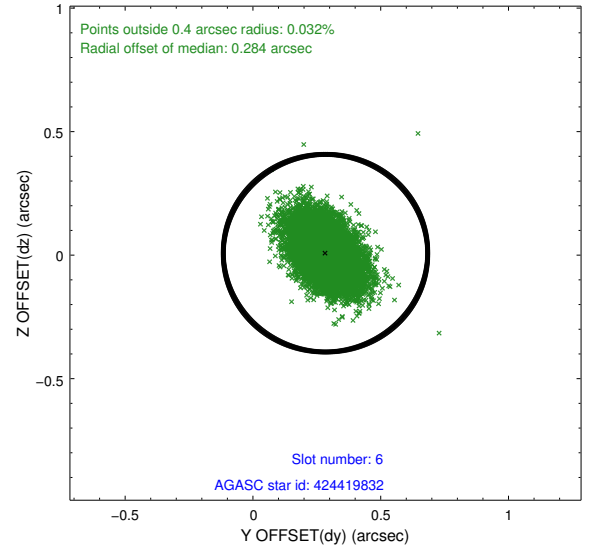
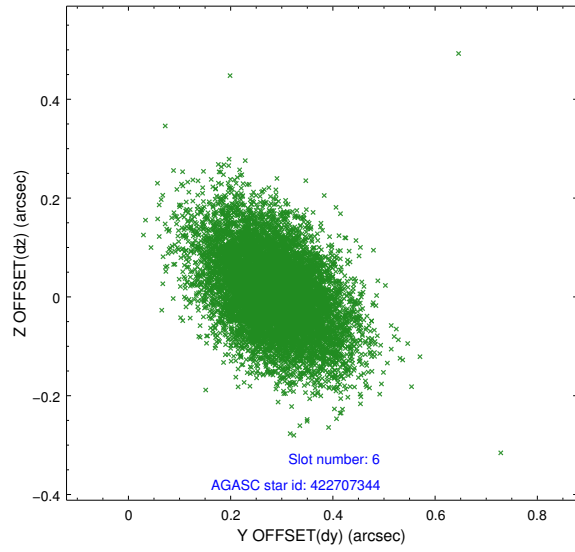
2.4.2 Slot 4



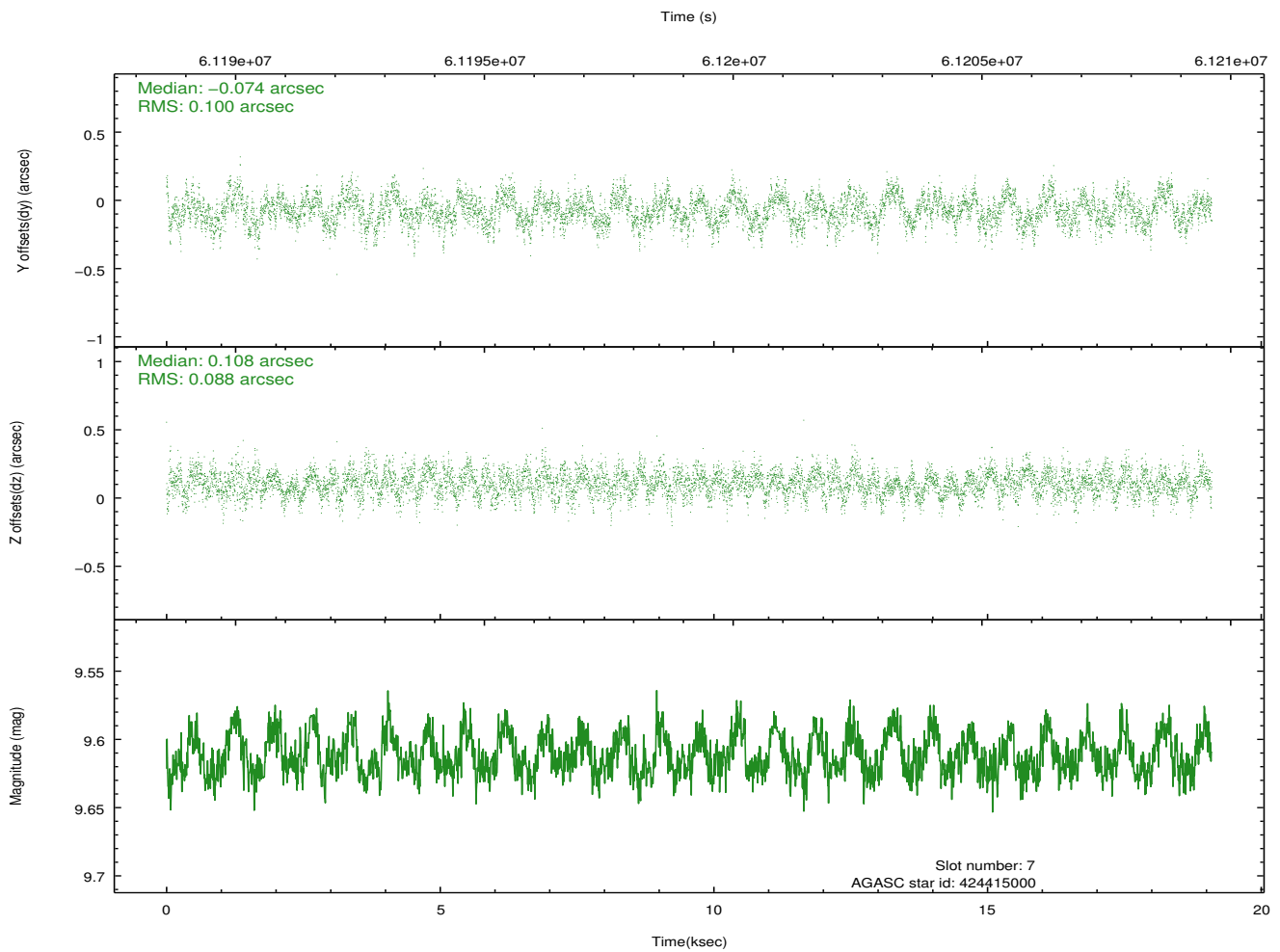
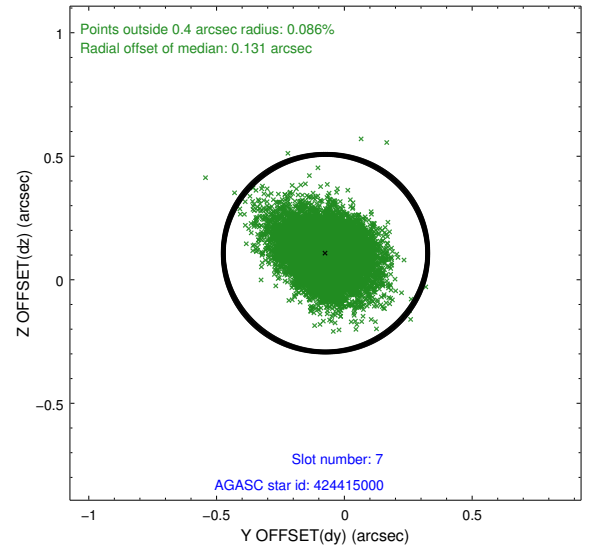
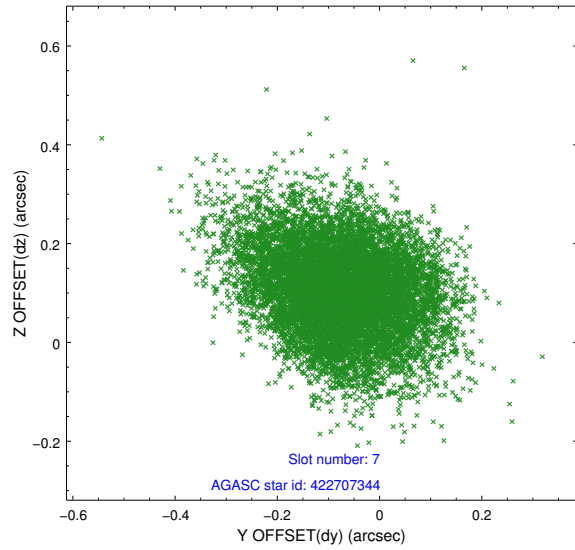
2.4.3 Slot 5



2.4.4 Slot 6

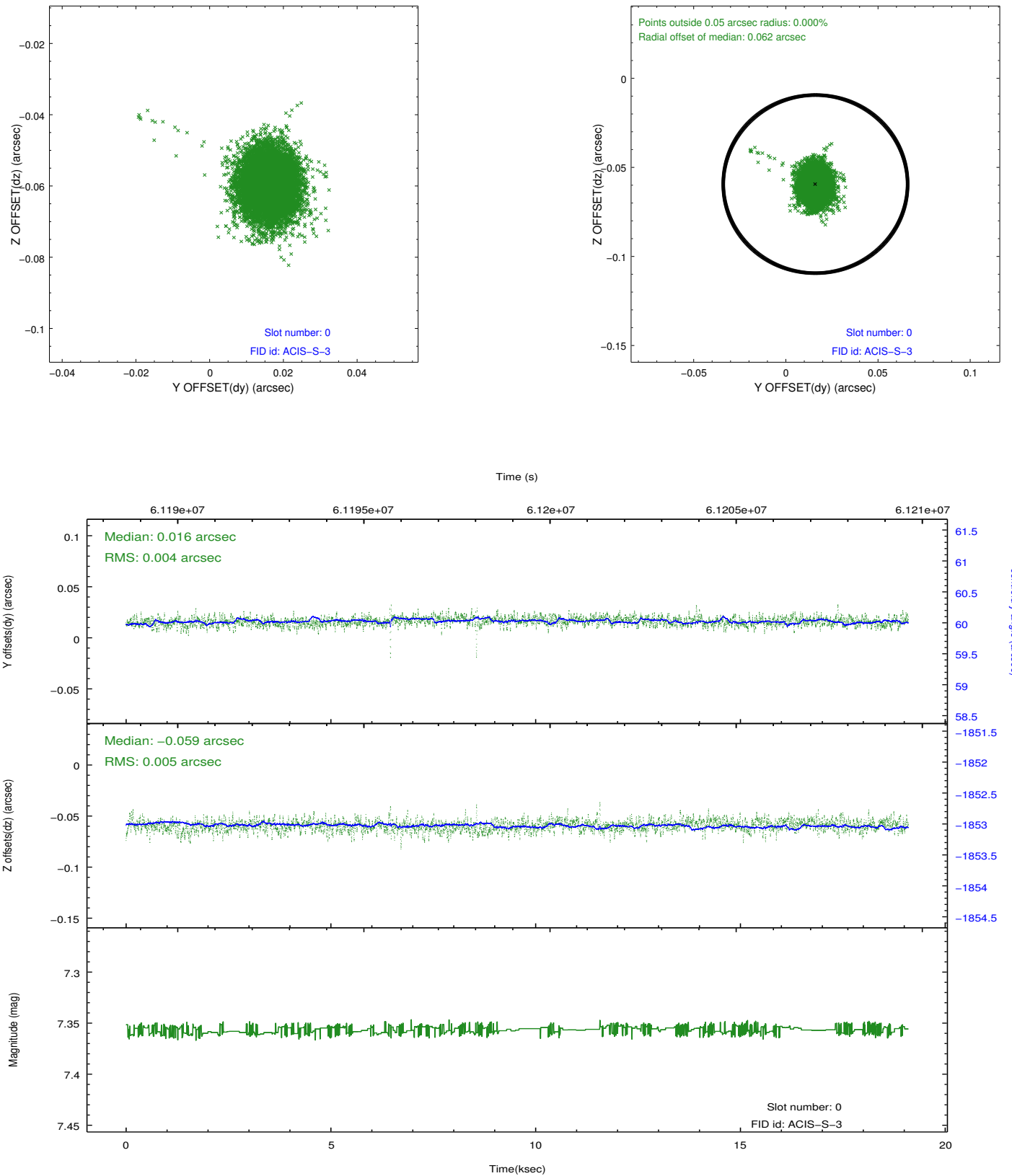


2.4.5 Slot 7

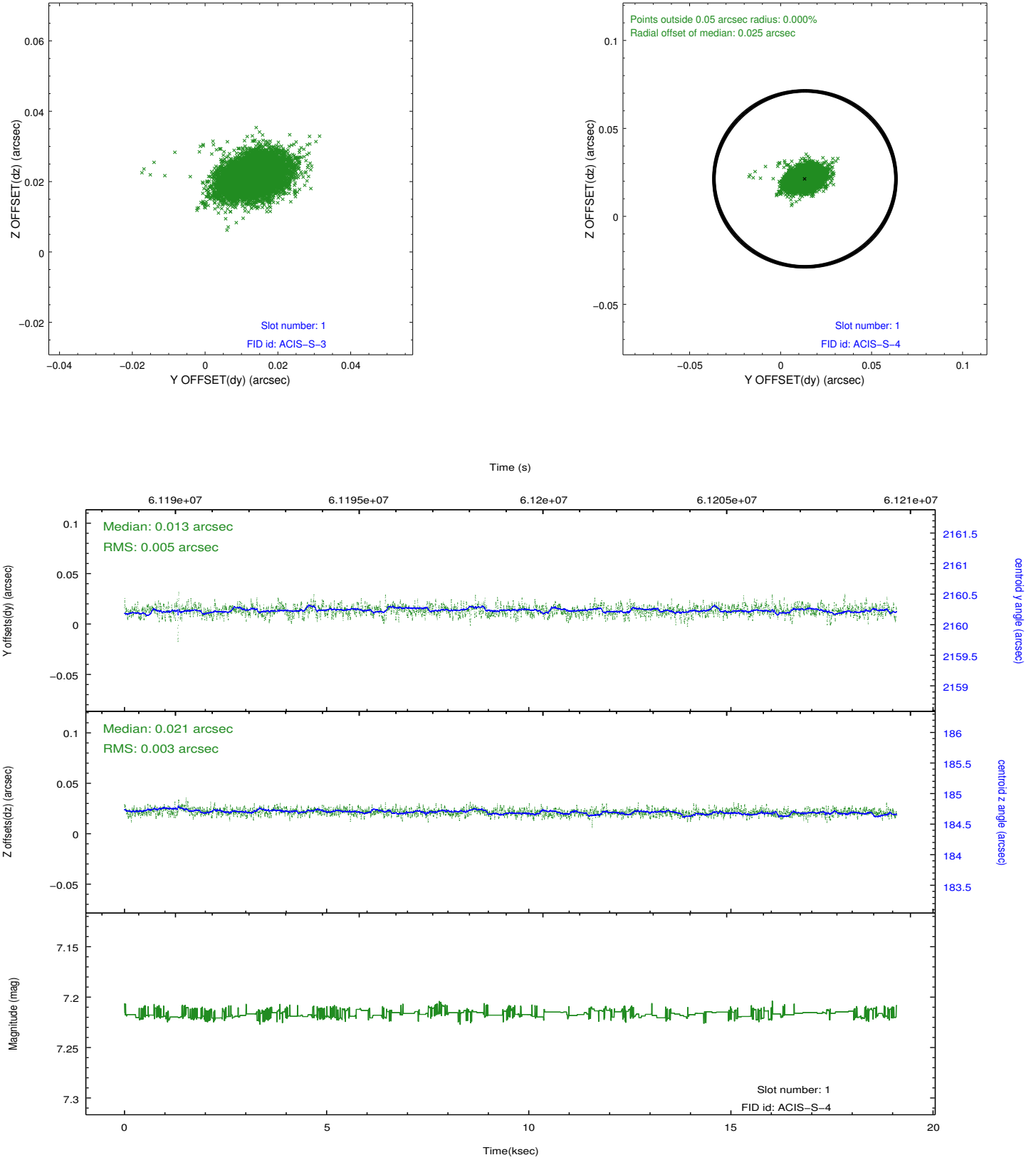


2.5 FID Slots

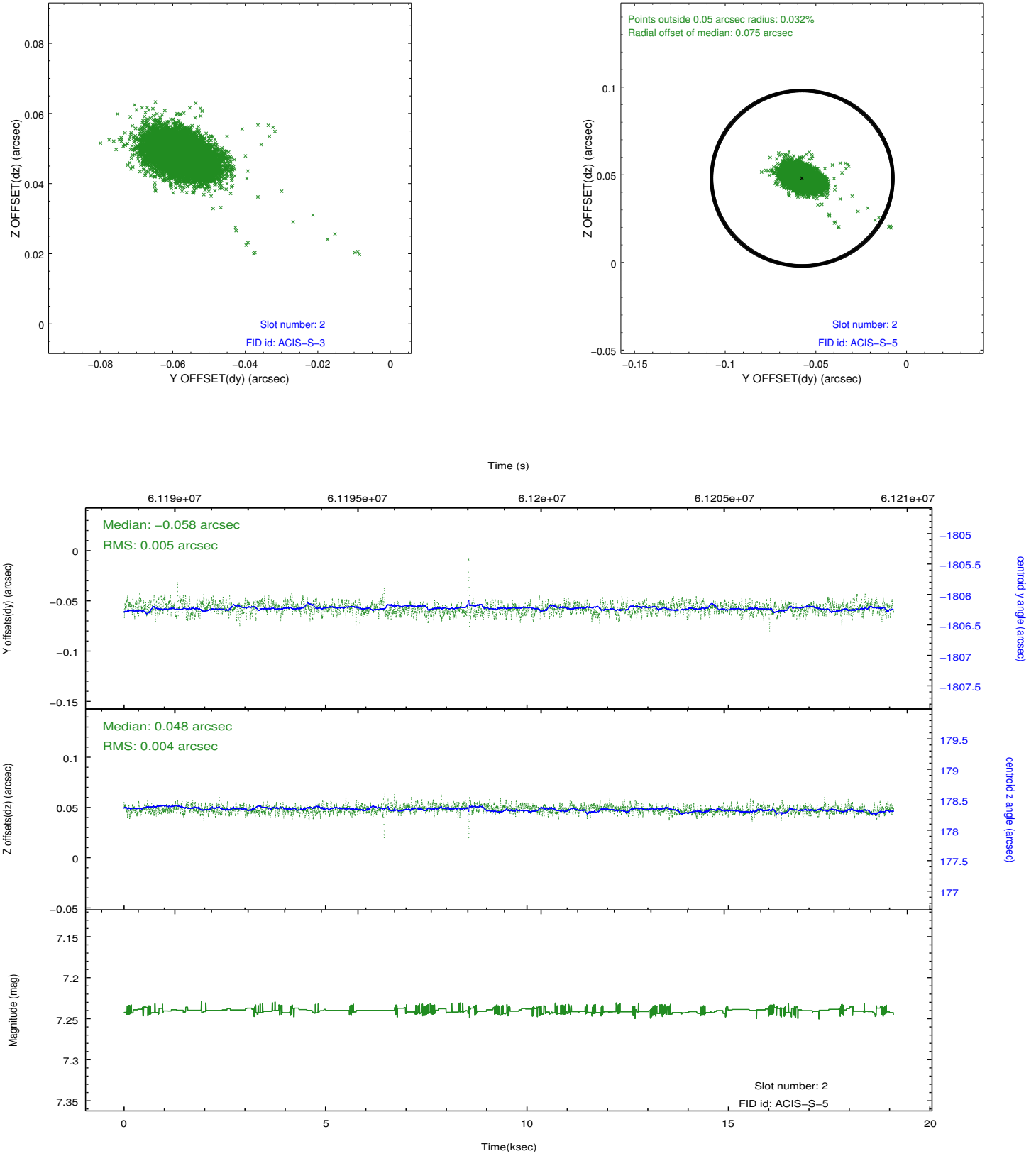
2.5.1 Slot 0



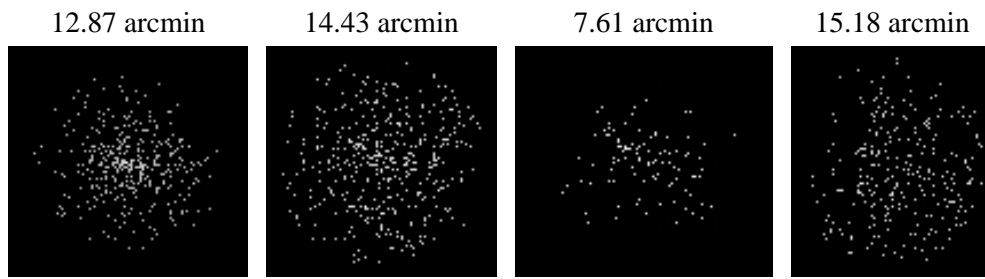
2.5.2 Slot 1



2.5.3 Slot 2



3 Point Sources



A Summary

A.1 Status

V&V Scientist	Beth Sundheim
V&V Date (YYYY-MM-DD)	2009.12.04
V&V Edition	1
V&V Disposition and Status	OK
V&V Charge Time	18.435

A.2 Comments

Focal plane temperature is warmer than -118.7 C degrees during the entire observation. This temperature is the upper limit of the verified ACIS calibration for the front-illuminated chips. The focal plane temperature is also warmer than -116.7 degrees C for the entire observation. This temperature is the upper limit of the verified ACIS calibration for the back-illuminated chips. The ACIS spectral response calibration is less accurate at these warmer temperatures than it is at -119.7 C. Users whose science objectives depend on the most accurate spectral response (ie: fitting line-rich spectra) may notice an effect. Users whose science objectives do not depend on the most accurate spectral response should not notice an effect.