

V&V Reference Report

L2 ASCDS Version : 8.4.4

Observation 8202 - L2 Version 2
Chandra X-Ray Center

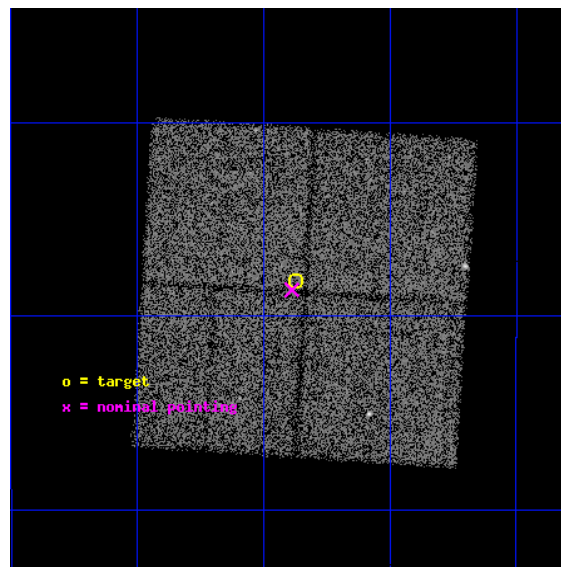
L2 Processing Date : Apr 28 2012

Contents

1	Front	2
2	OBI	3
2.1	OBI	3
2.1.1	Images	3
2.1.2	Bias	3
2.1.3	Parameters	4
2.1.4	Events	4
2.2	Compared Parameters	5
2.3	Aspect	6
2.4	Star Slots	9
2.4.1	Slot 3	9
2.4.2	Slot 4	10
2.4.3	Slot 5	11
2.4.4	Slot 6	12
2.4.5	Slot 7	13
2.5	FID Slots	14
2.5.1	Slot 0	14
2.5.2	Slot 1	15
2.5.3	Slot 2	16
A	Summary	17
A.1	Status	17
A.2	Comments	17

1 Front

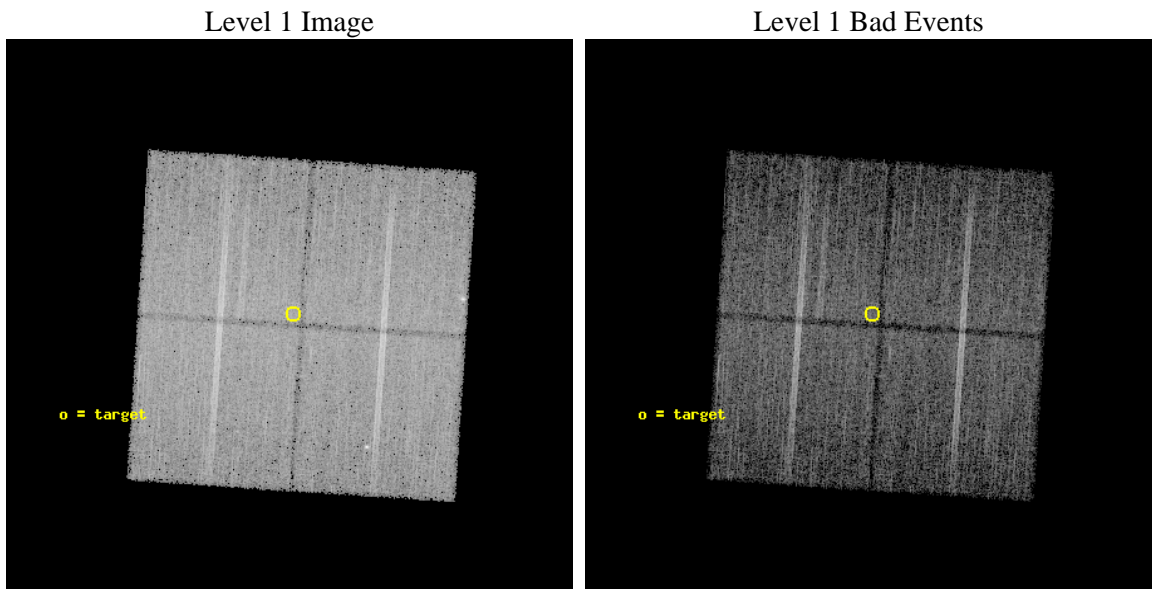
seq_num	600638	Sequence number
obs_id	8202	Observation id
title	Galactic Bulge Latitude Survey-2	Proposal title
observer	Professor Johnathan Grindlay	Principal investigator
object	GBW22	Source name
dtcycle	0	
cycle	P	events from which exps? Prim/Second/Both
ra_targ	265.34375	Observer's specified target RA [deg]
dec_targ	-28.136583	Observer's specified target Dec [deg]
ra_nom	265.34703219068	Nominal RA [deg]
dec_nom	-28.1441144017	Nominal Dec [deg]
roll_nom	273.81023910724	Nominal Roll [deg]
revision	2	Processing version of data
ontime	14745.758233726	Sum of GTIs [s]
livetime	14553.094046733	Livetime [s]
ontime0	14748.776133835	Sum of GTIs [s]
ontime1	14751.958144248	Sum of GTIs [s]
ontime2	14755.140154541	Sum of GTIs [s]
ontime3	14745.758233726	Sum of GTIs [s]
l2events	67502	Number of level 2 events



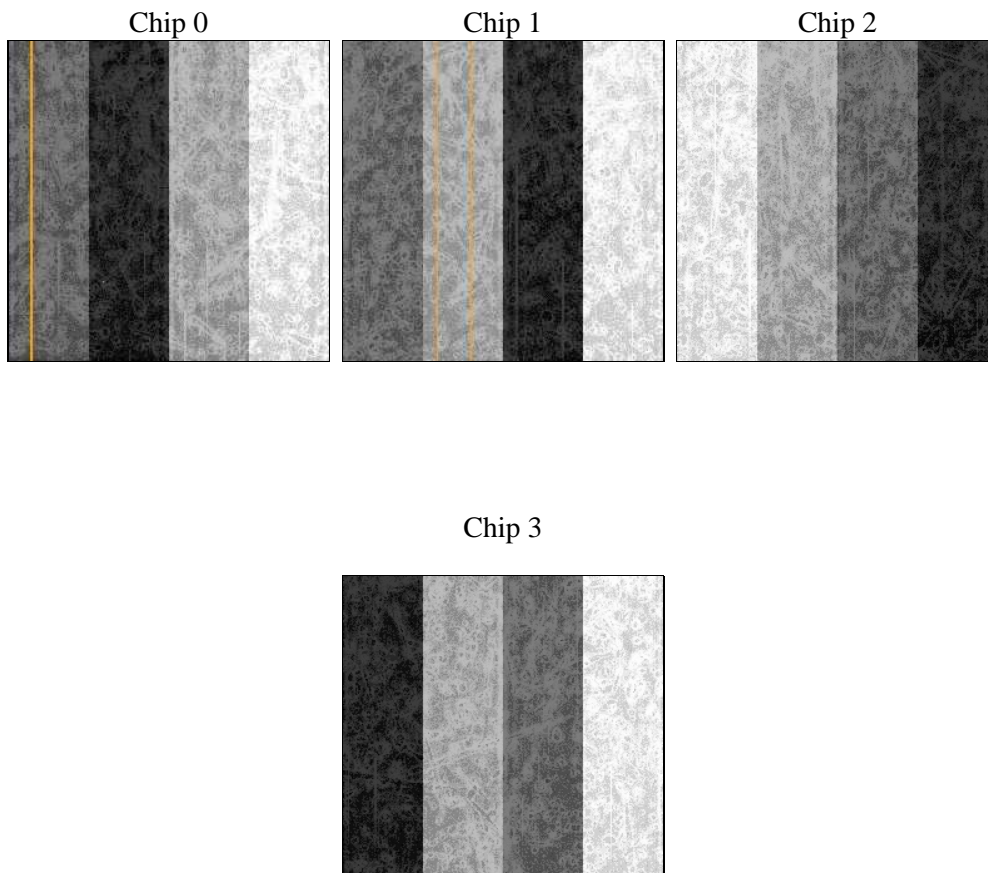
2 OBI

2.1 OBI

2.1.1 Images



2.1.2 Bias



2.1.3 Parameters

obi_num	0	Obi number	sched_exp_time	14700.000000	[s] Scheduled observation exposure time
ascdsver	8.4.4	Processing system revision	ontime	14745.758233726	Sum of GTIs [s]
caldsver	4.4.9	 	ontime0	14748.776133835	Sum of GTIs [s]
date	2012-04-28T16:20:52	Date and time of file creation	ontime1	14751.958144248	Sum of GTIs [s]
revision	2	Processing version of data	ontime2	14755.140154541	Sum of GTIs [s]
			ontime3	14745.758233726	Sum of GTIs [s]
			l1events	547326	Number of level 1 events

2.1.4 Events

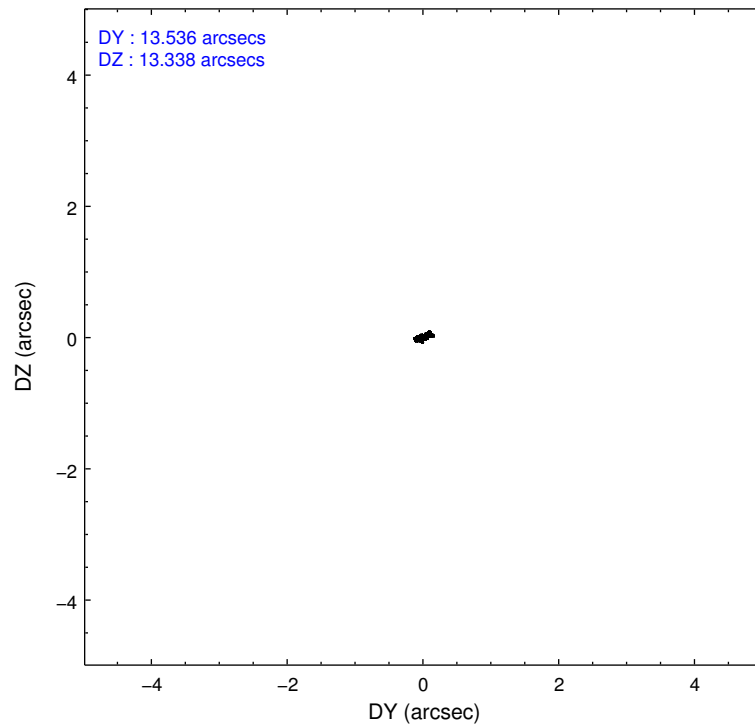
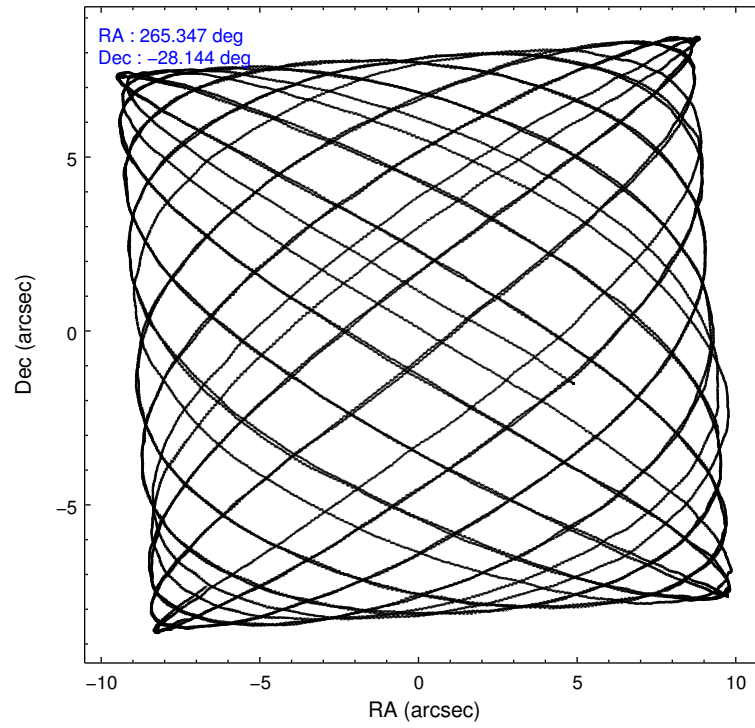
	ccd 0	ccd 1	ccd 2	ccd 3
level 1 events	132314	132109	142075	140828
rejected events	111897	112044	123087	122430
rejected %	84%	84%	86%	86%

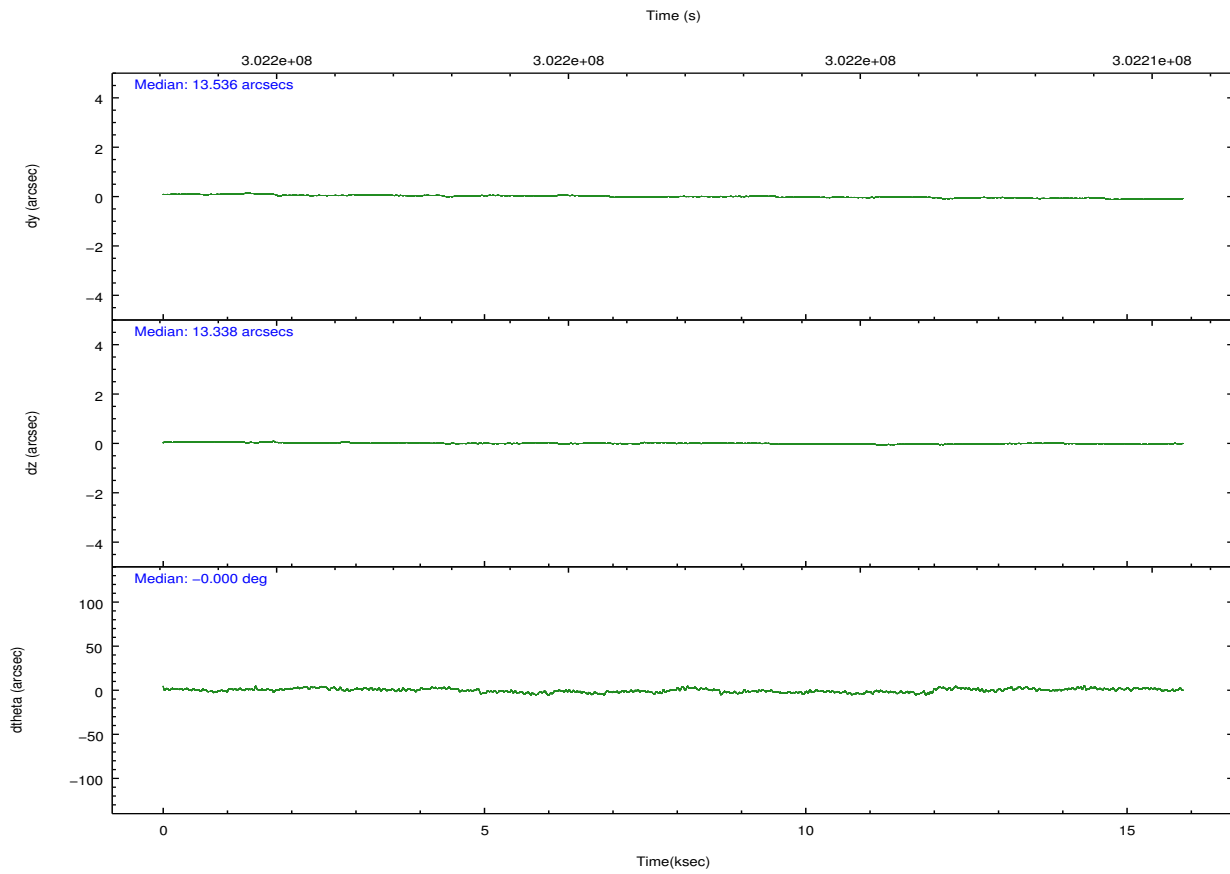
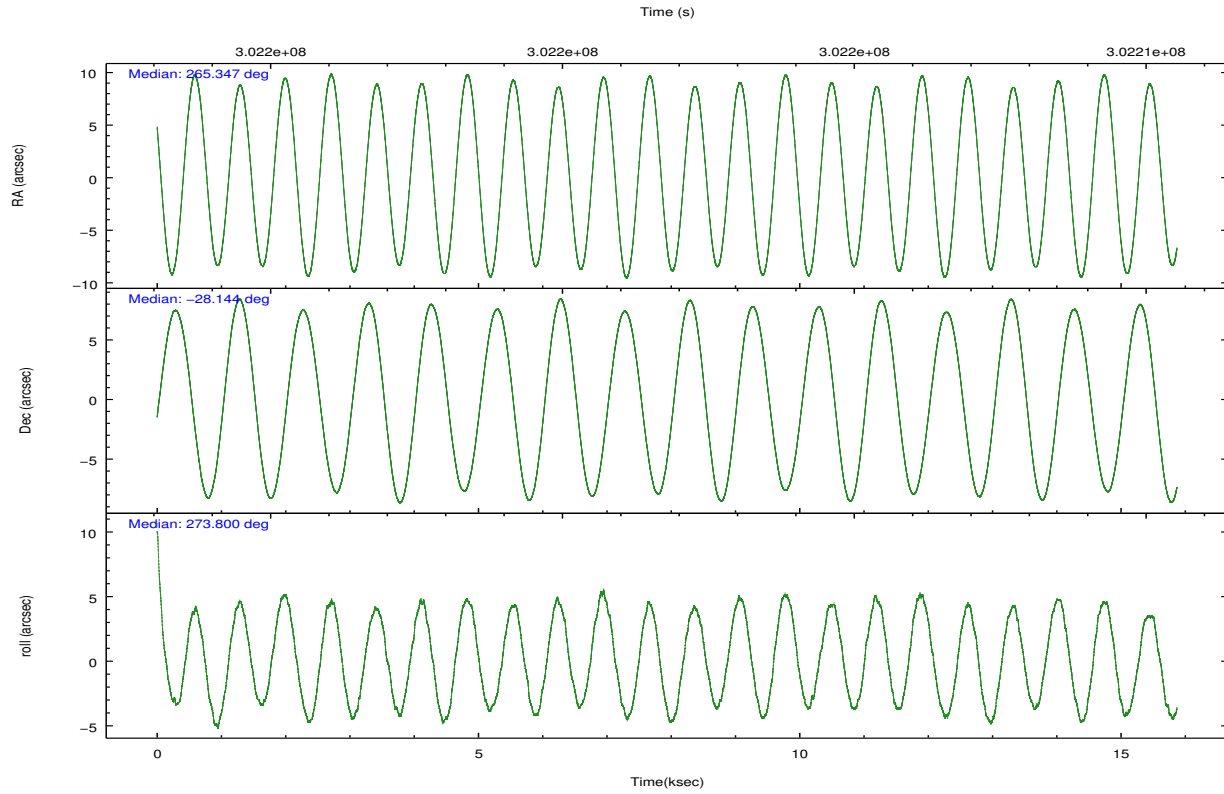
	ccd 0	ccd 1	ccd 2	ccd 3
grade 0 events	9831	8577	9252	8608
	7%	6%	6%	6%
grade 1 events	95	75	96	112
	0%	0%	0%	0%
grade 2 events	4157	4455	3741	3516
	3%	3%	2%	2%
grade 3 events	1765	1787	1619	1637
	1%	1%	1%	1%
grade 4 events	1637	1699	1628	1630
	1%	1%	1%	1%
grade 5 events	5606	6175	5630	6437
	4%	4%	3%	4%
grade 6 events	3033	3555	2749	3011
	2%	2%	1%	2%
grade 7 events	106190	105786	117360	115877
	80%	80%	82%	82%

2.2 Compared Parameters

Parameter	Planned	Actual	Parameter	Planned	Actual
Instrument	ACIS	ACIS	Obspar format version number	7	7
Detector	ACIS-0123	ACIS-0123	Obspar file type	PREDICTED	ACTUAL
Grating	NONE	NONE	Obspar update status	NONE	UPDATED
Data mode	VFAINT	VFAINT	Number of optional ACIS chips dropped	0	0
Observation mode	POINTING	POINTING	On-chip summing requested	N	N
[deg] Pointing RA	265.329593	265.3470321906793	Subarray requested	NONE	NONE
[deg] Pointing Dec	-28.121333	-28.14411440170023	Alternating exposures requested	N	N
[deg] Pointing Roll	273.593332	273.8102391072413	[s] Primary exposure time	0.000000	3.1
[mm] SIM focus pos	-0.782348	-0.7809083437167272			
[mm] SIM defocus	0	0.001439871863259334			
[mm] SIM translation stage pos	-233.592463	-233.5874344608287			
[mm] SIM translation stage offset	0	-0.005018542100998502			
[s] Observation start time (MET)	302195025.184000	302193662.67241			
Observation start date	2007-07-30T15:02:40	2007-07-30T14:41:02			
[s] Observation end time (MET)	302209725.184000	302209859.72318			
Observation end date	2007-07-30T19:07:40	2007-07-30T19:10:59			
Read mode	TIMED	TIMED			

2.3 Aspect



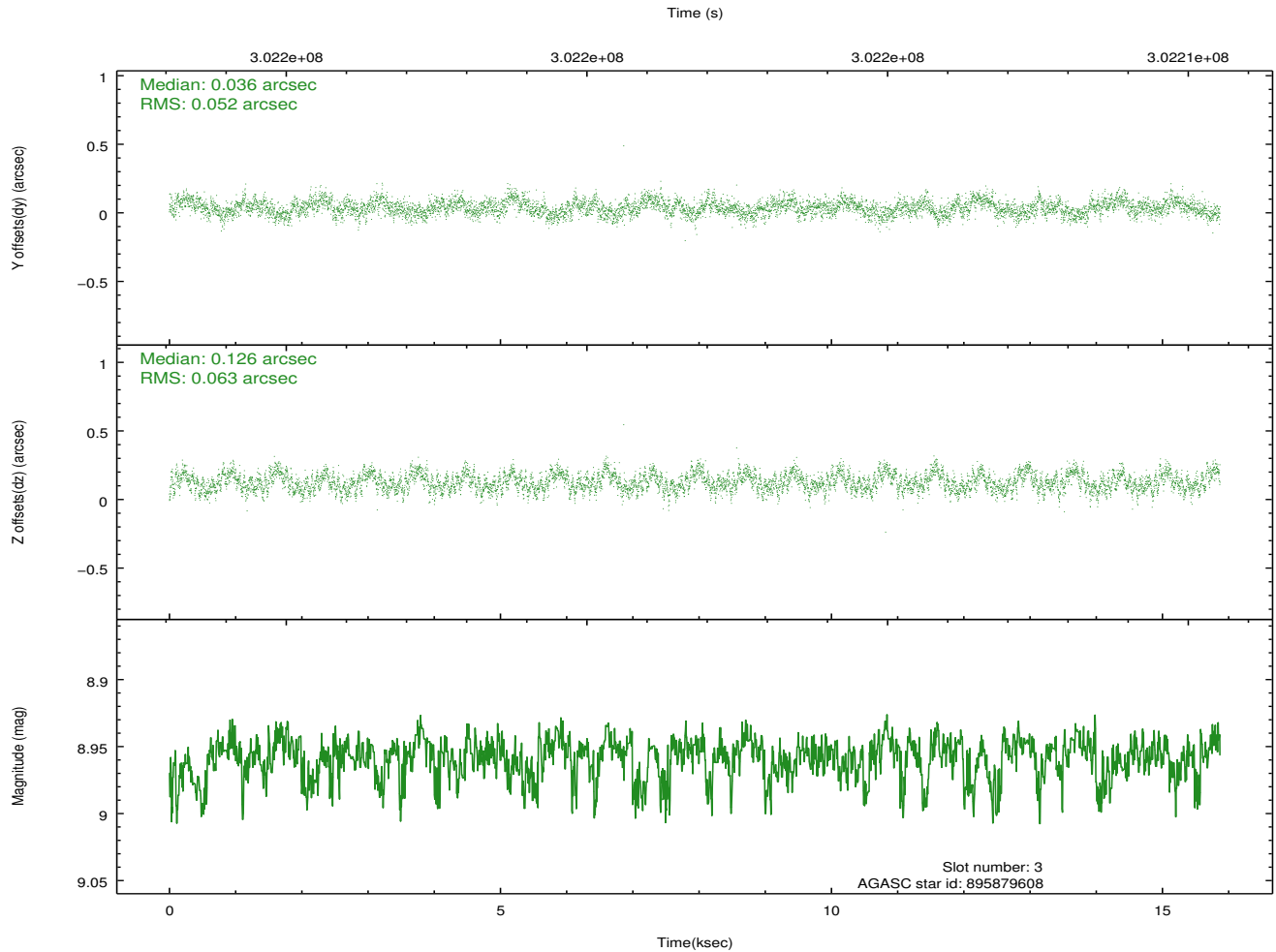
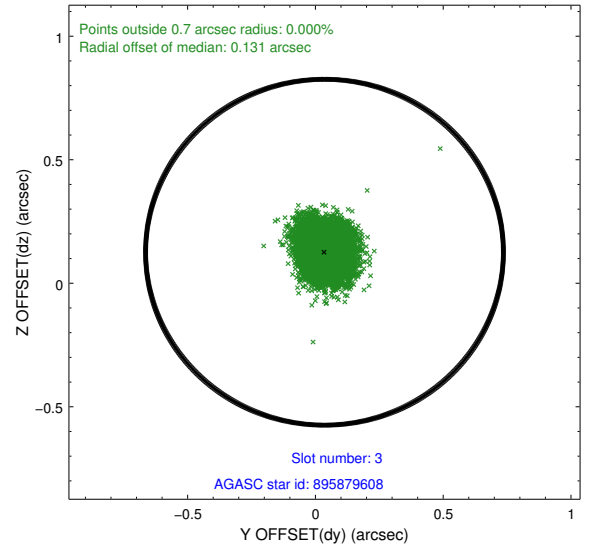
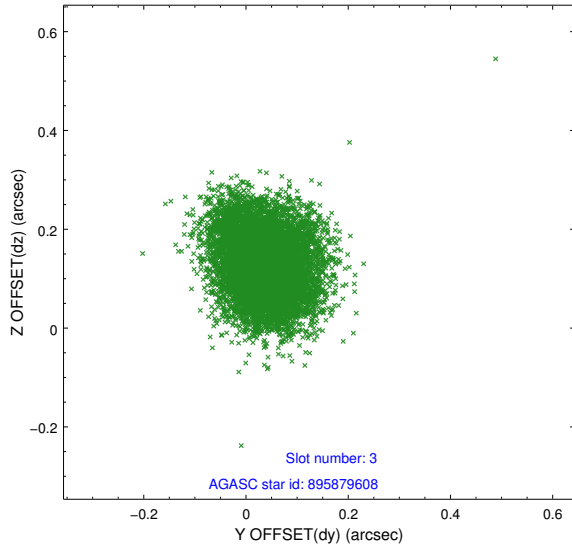


Slot Statistics

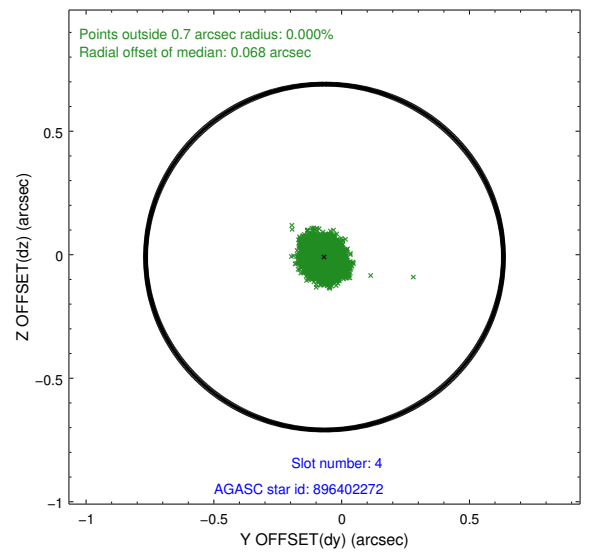
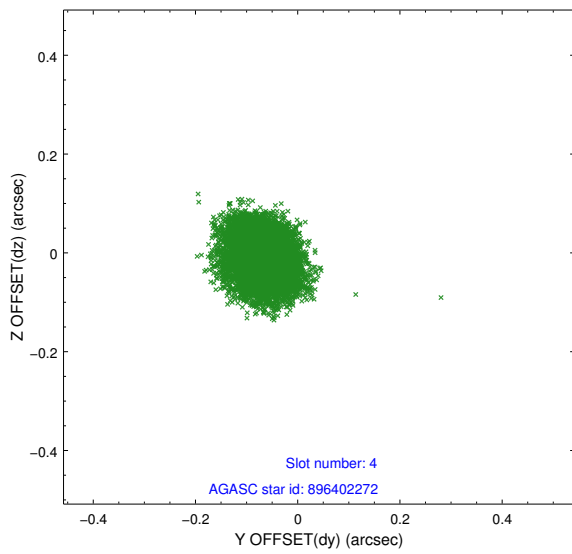
slot	status	id	mag	n_pts	med_dy	med_dz	dr1	dr2	ra	dec	mean_y	mean_z
0	FID	ACIS-I-1	7.24	3869	-0.044	0.068	0.016	0.025	0.000000	0.000000	925.89	-836.85
1	FID	ACIS-I-2	7.13	3870	-0.179	-0.102	0.010	0.016	0.000000	0.000000	-768.18	-843.55
2	FID	ACIS-I-4	7.15	3870	0.125	0.100	0.012	0.019	0.000000	0.000000	2145.88	1062.80
3	GUIDE	895879608	8.96	7723	0.036	0.126	0.088	0.138	265.708239	-27.843915	-919.16	1265.48
4	GUIDE	896402272	7.58	7743	-0.067	-0.009	0.058	0.092	265.637294	-28.313189	751.69	930.29
5	GUIDE	896404568	7.86	7742	-0.043	-0.033	0.056	0.093	265.687293	-28.431080	1185.77	1060.58
6	GUIDE	896405616	7.85	7742	-0.027	-0.080	0.061	0.100	264.752771	-28.412560	937.60	-1889.11
7	GUIDE	896405976	9.09	7738	0.094	-0.008	0.102	0.165	264.638127	-28.604395	1605.89	-2290.50

2.4 Star Slots

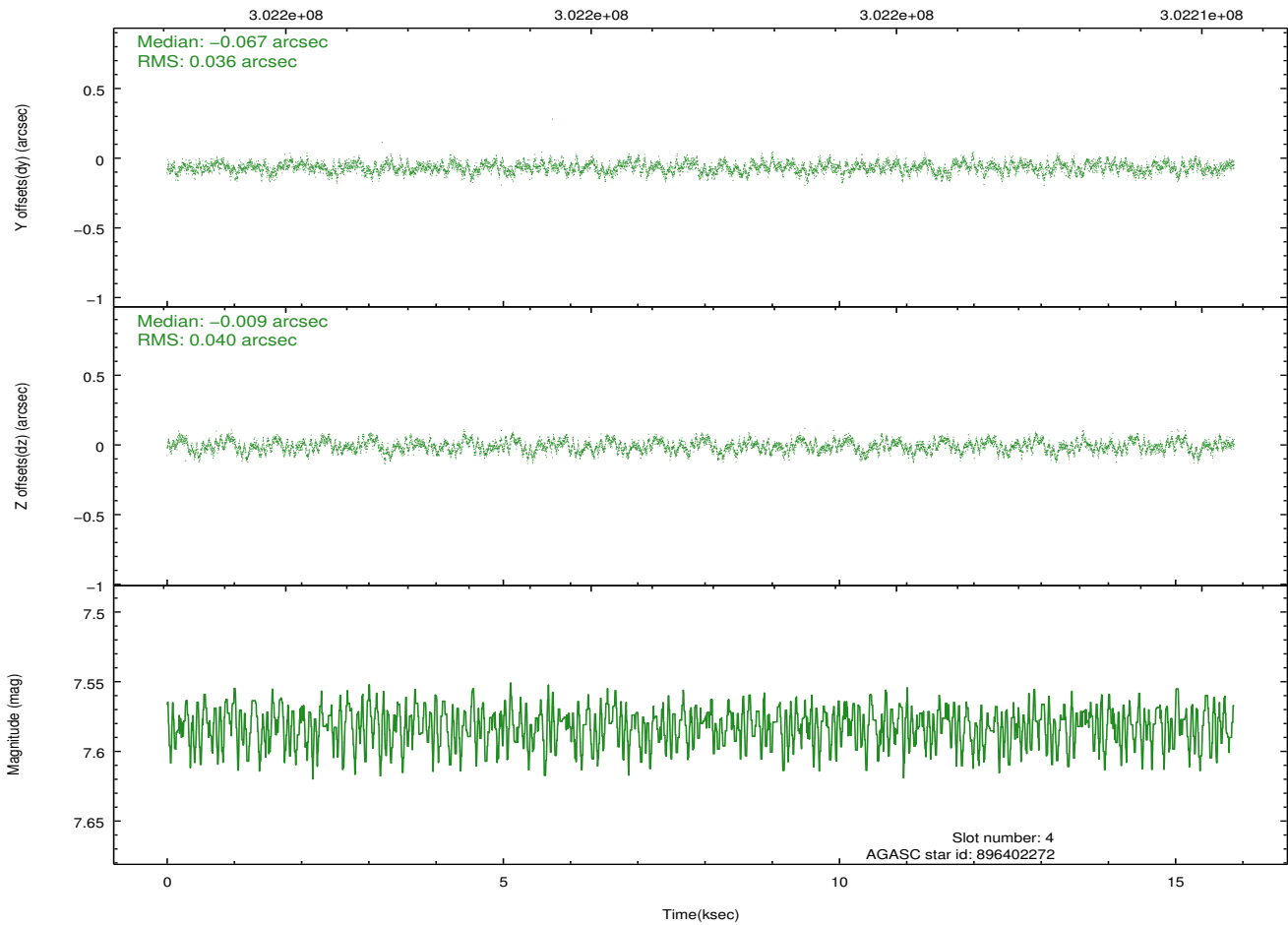
2.4.1 Slot 3



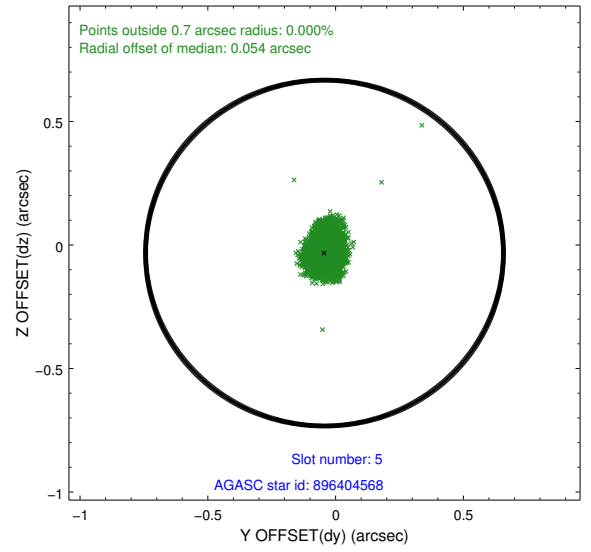
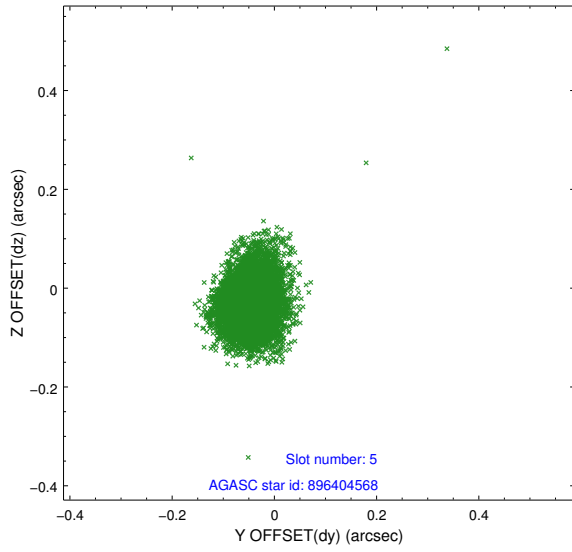
2.4.2 Slot 4



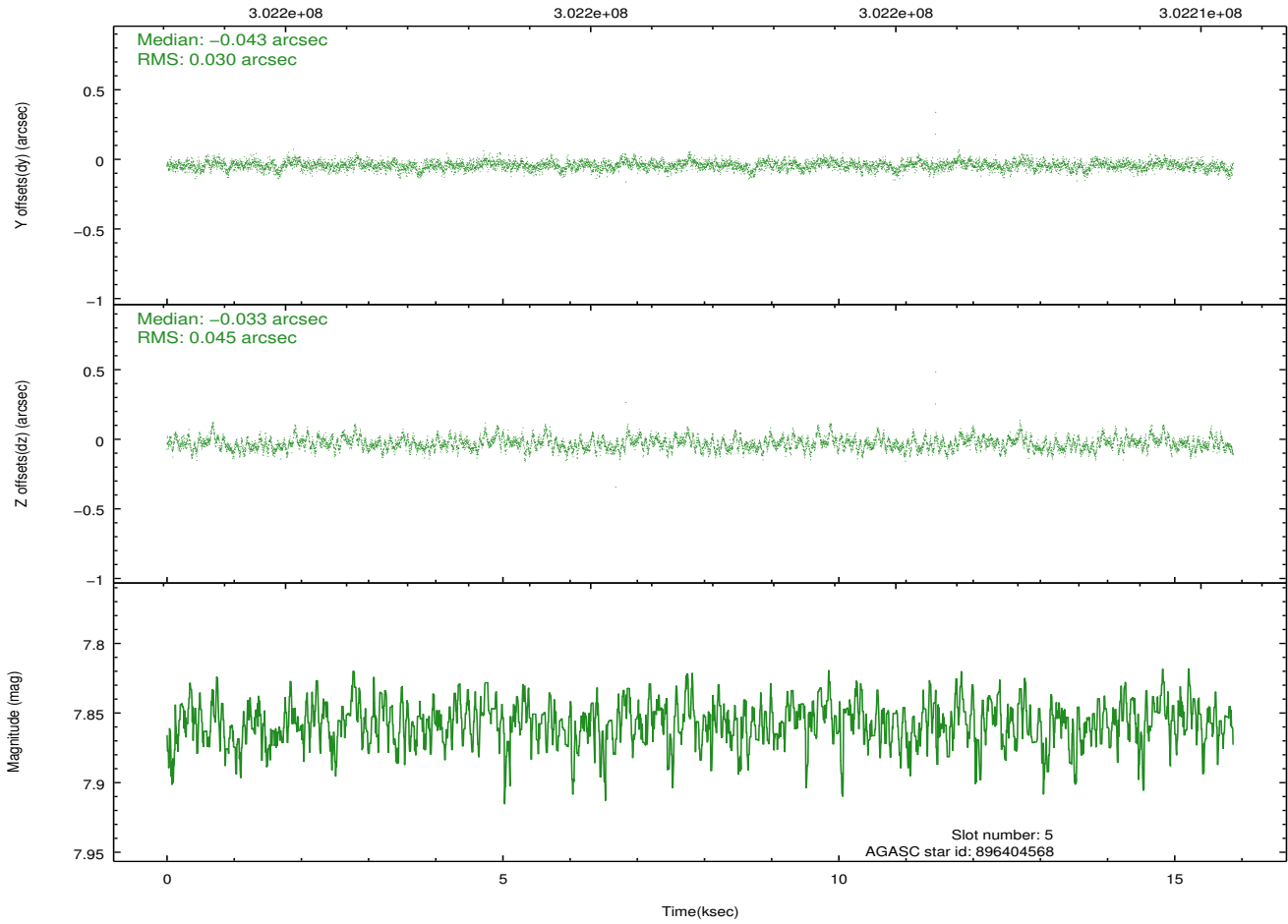
Time (s)



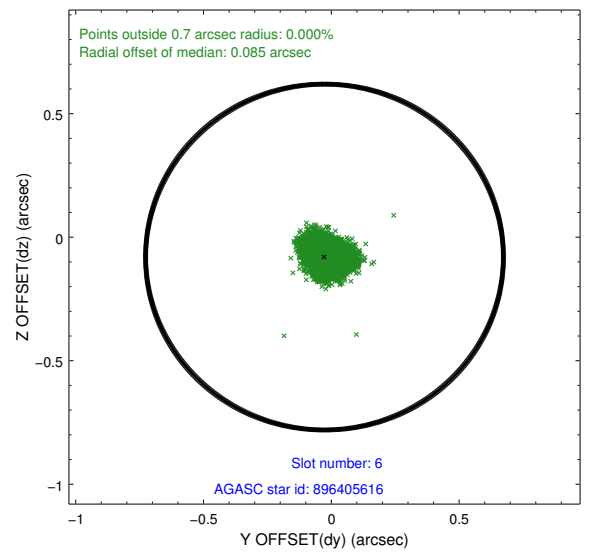
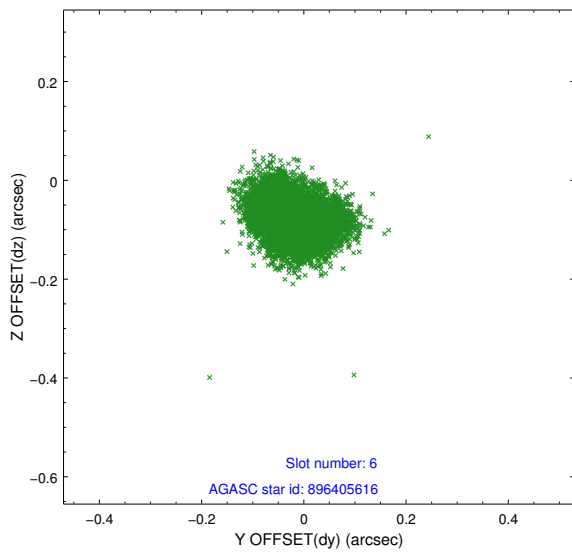
2.4.3 Slot 5



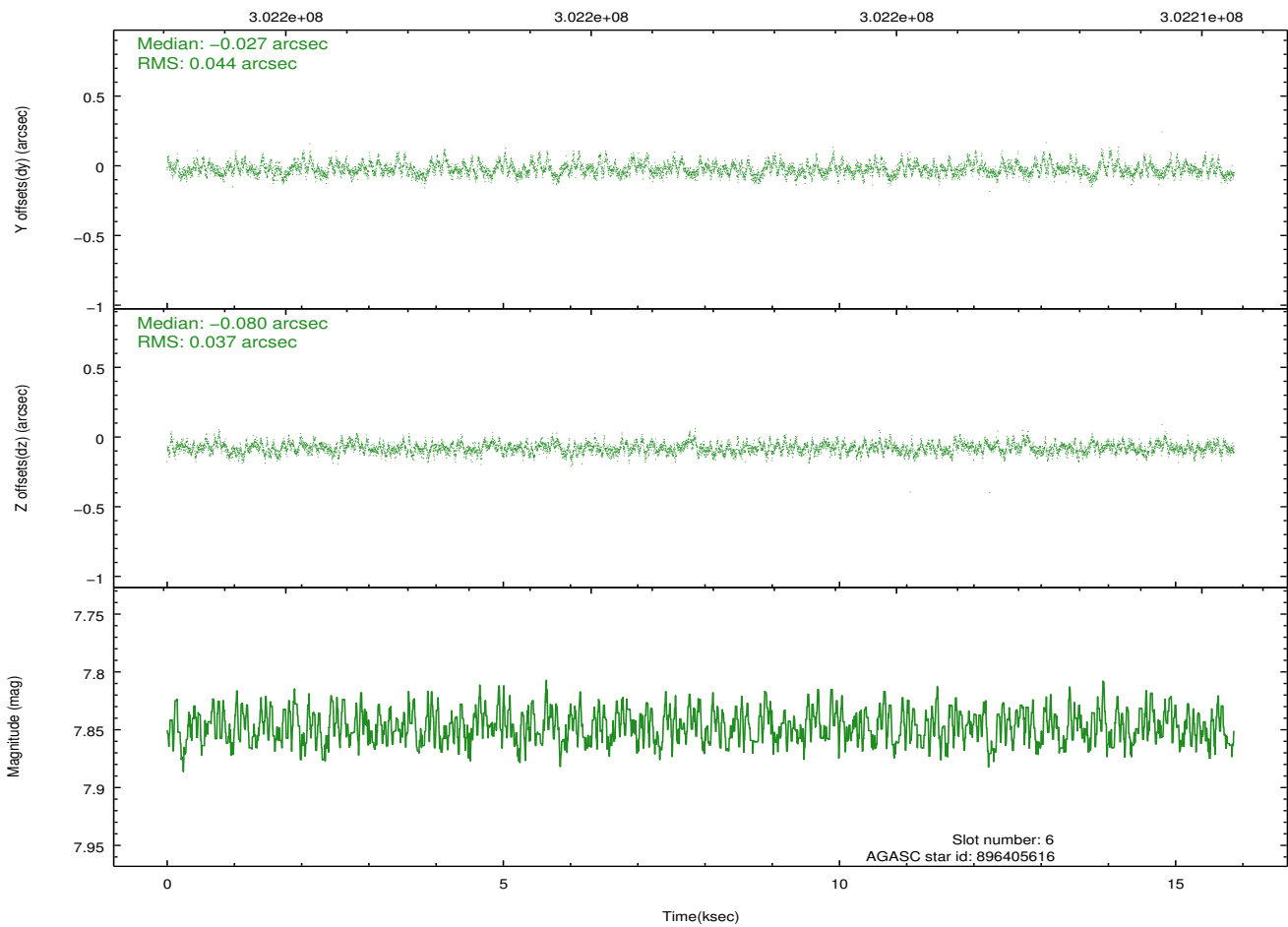
Time (s)



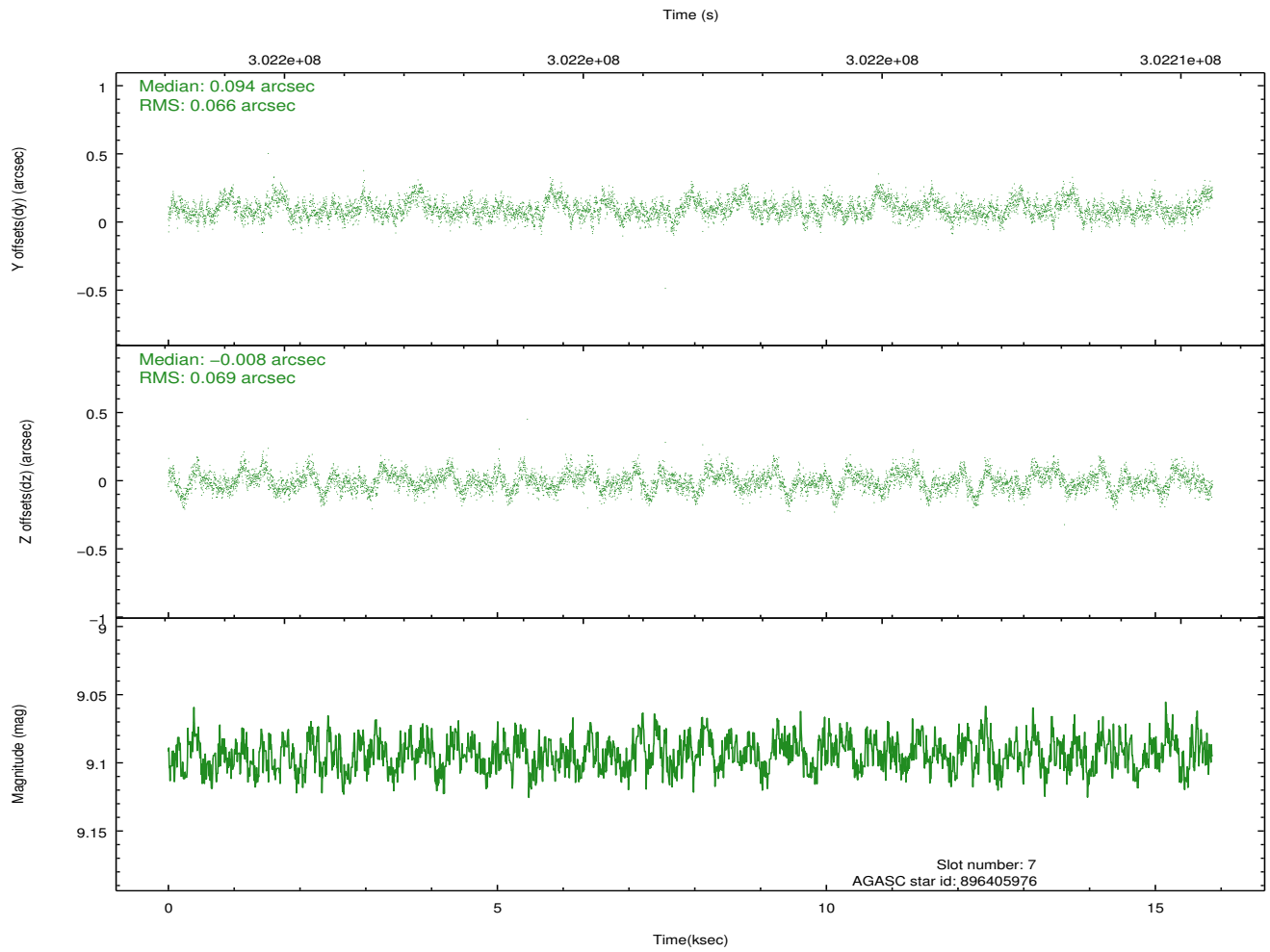
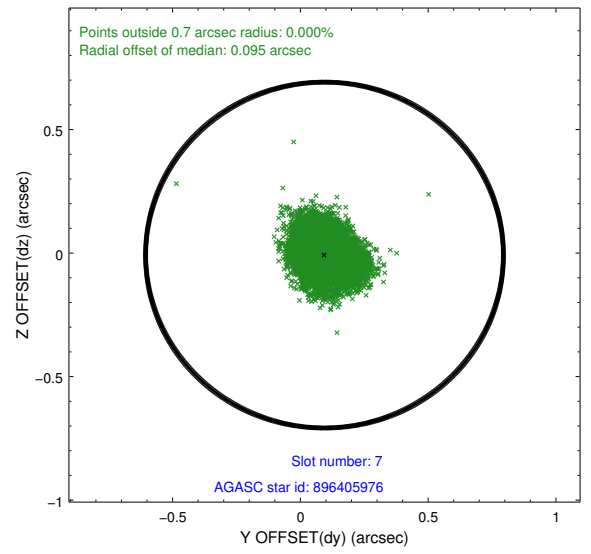
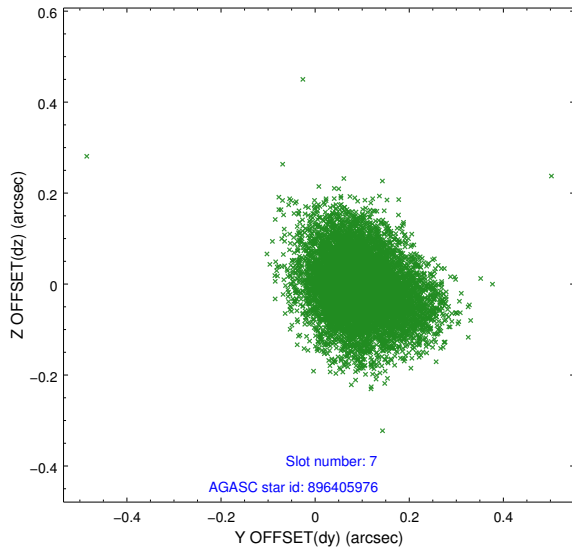
2.4.4 Slot 6



Time (s)

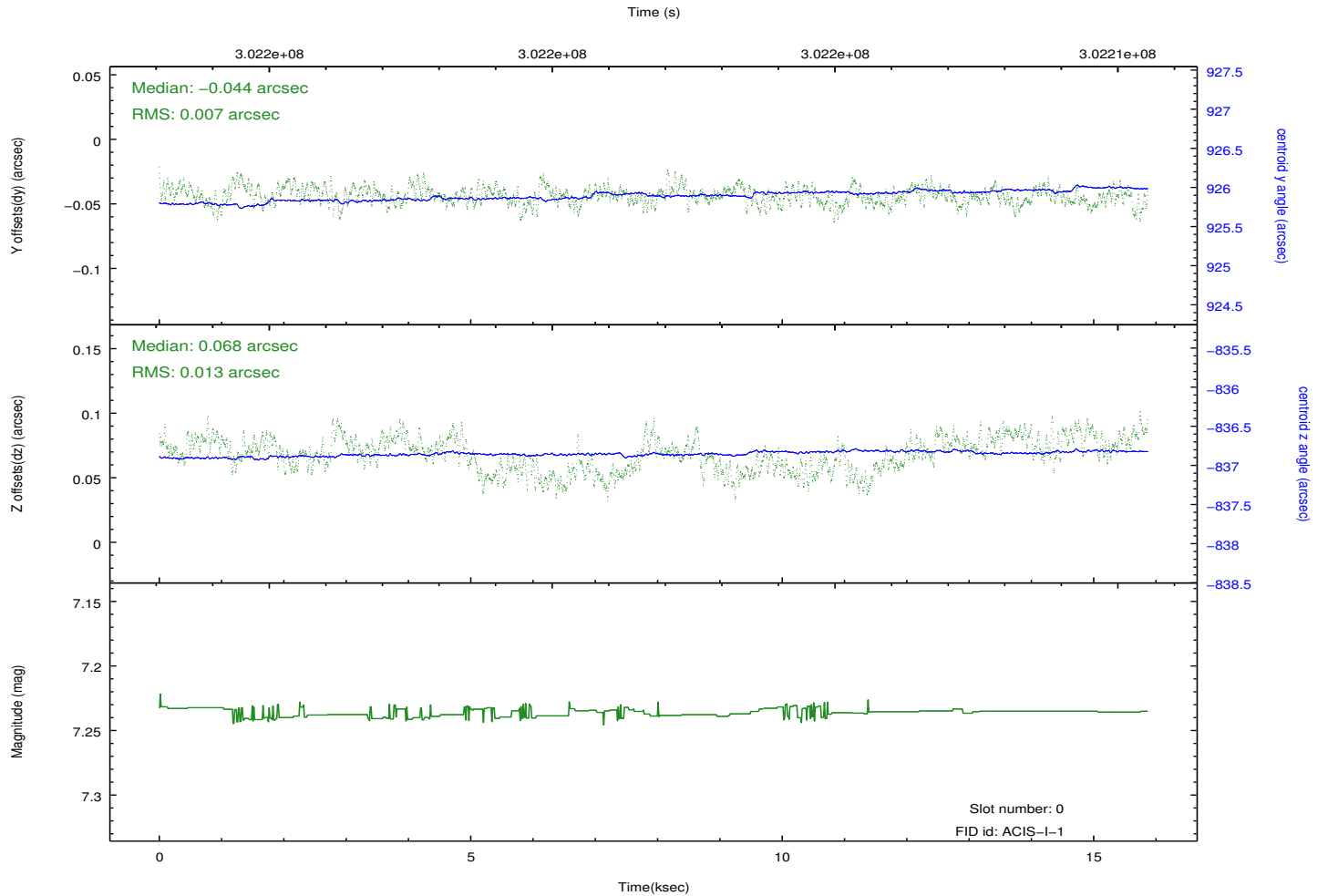
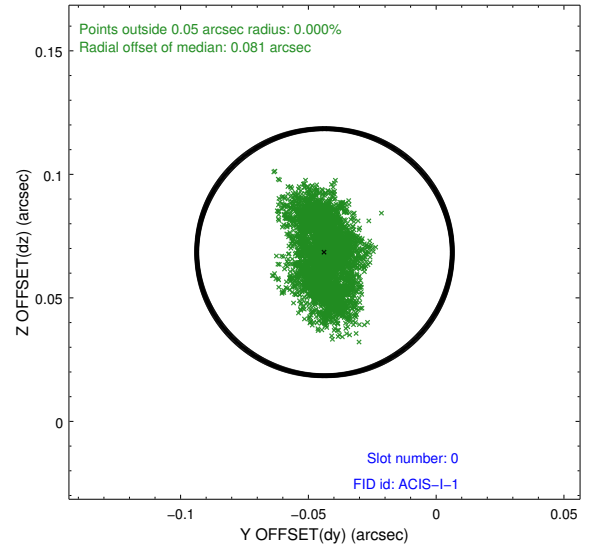
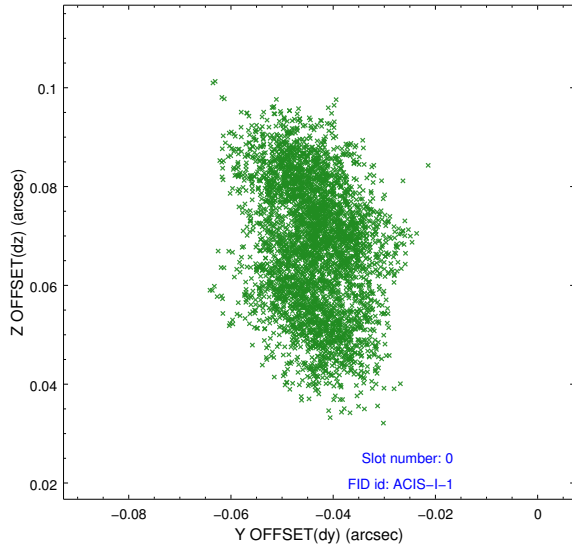


2.4.5 Slot 7

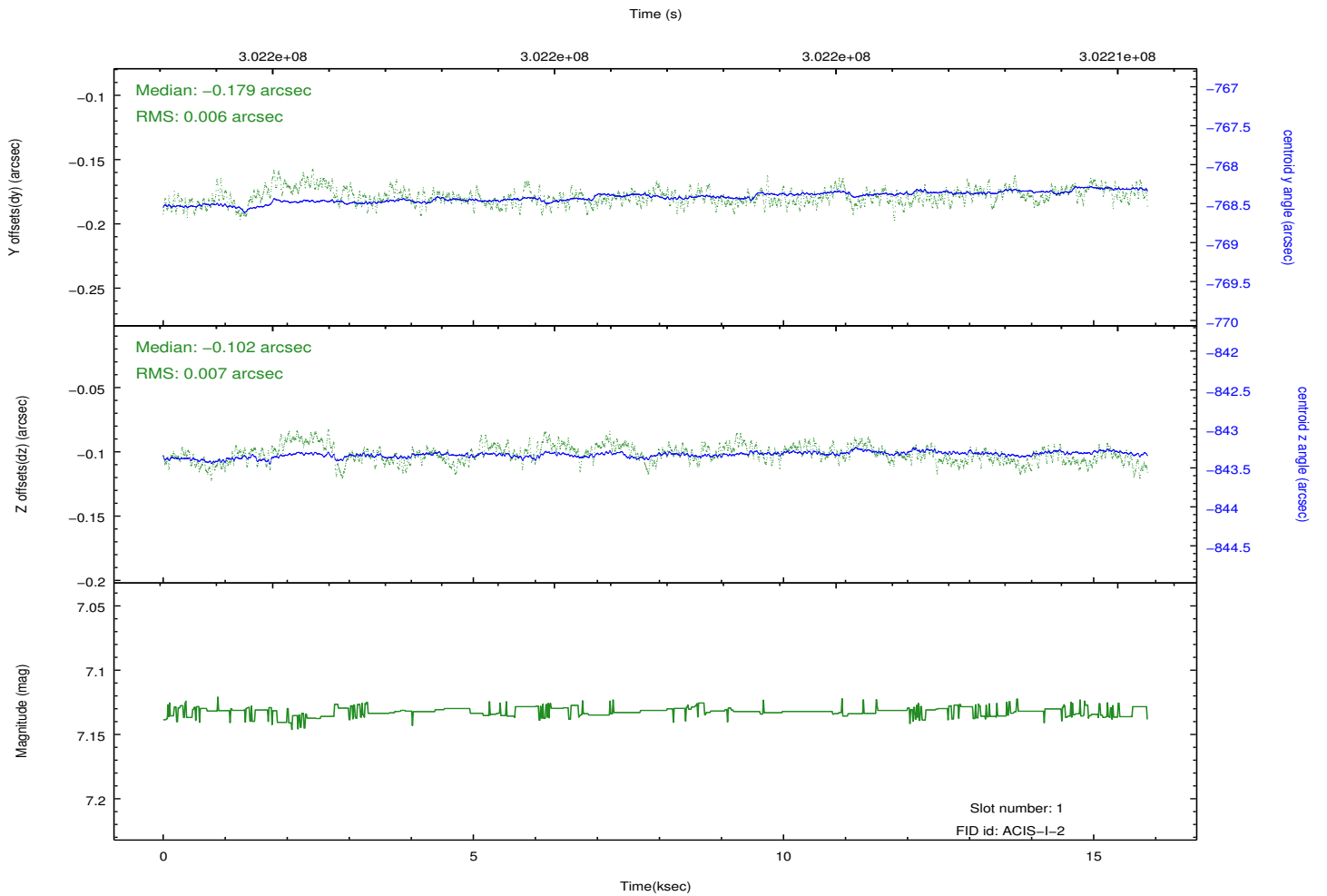
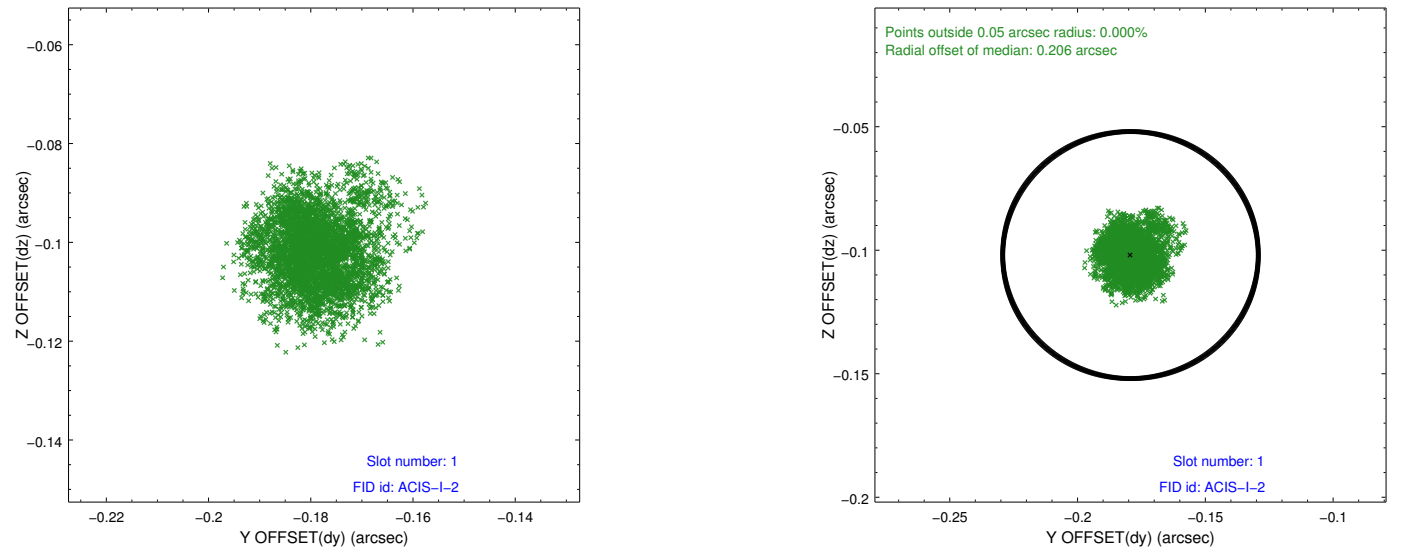


2.5 FID Slots

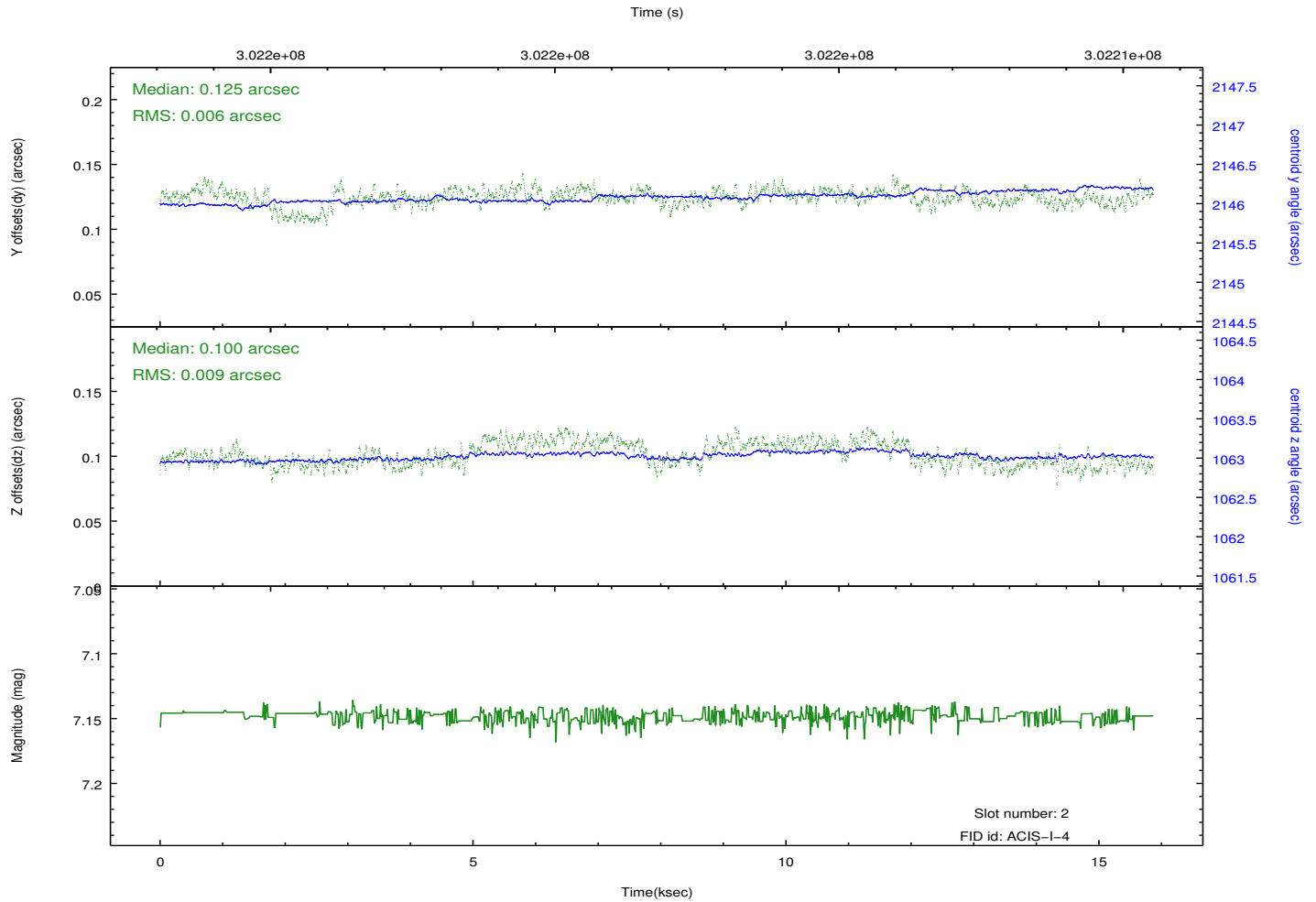
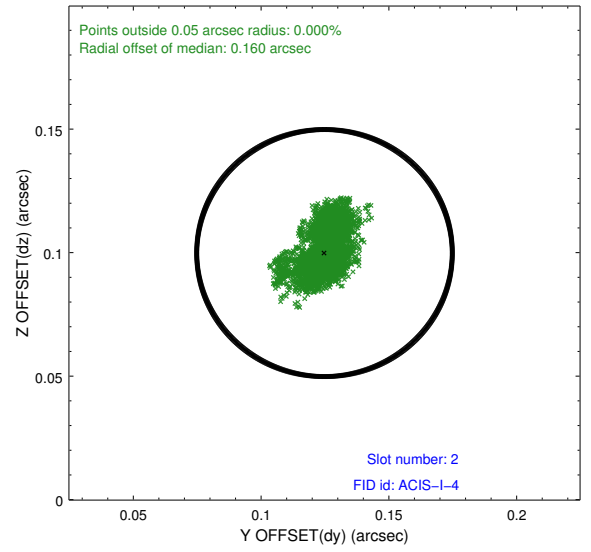
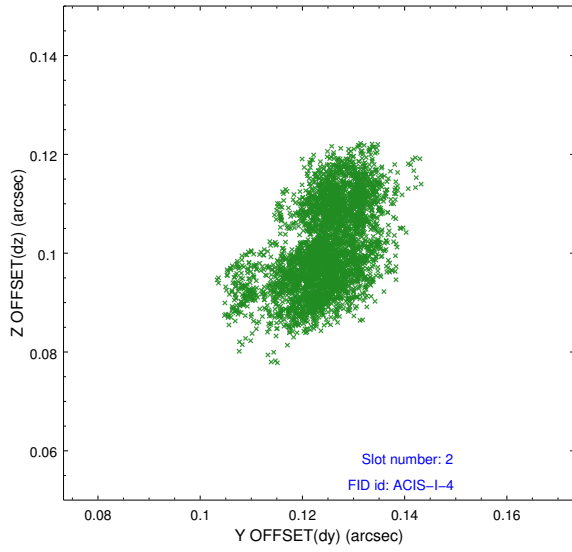
2.5.1 Slot 0



2.5.2 Slot 1



2.5.3 Slot 2



A Summary

A.1 Status

V&V Scientist	Jen Lauer
V&V Date (YYYY-MM-DD)	2012.05.01
V&V Edition	1
V&V Disposition and Status	OK
V&V Charge Time	14.7465771

A.2 Comments

Roll constraint met.