

# V&V Reference Report

## L2 ASCDS Version : 8.4.3.1

Observation 8252 - L2 Version 3  
Chandra X-Ray Center

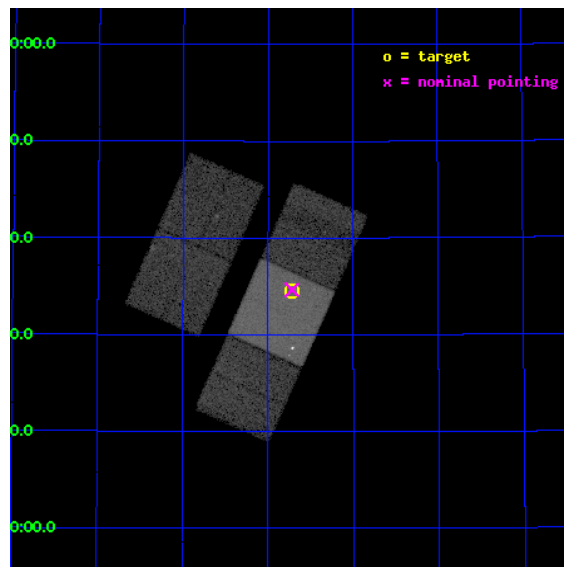
L2 Processing Date : Apr 15 2012

## Contents

<b>1</b>	<b>Front</b>	<b>2</b>
<b>2</b>	<b>OBI</b>	<b>3</b>
2.1	OBI . . . . .	3
2.1.1	Images . . . . .	3
2.1.2	Bias . . . . .	3
2.1.3	Parameters . . . . .	4
2.1.4	Events . . . . .	4
2.2	Compared Parameters . . . . .	5
2.3	Aspect . . . . .	6
2.4	Star Slots . . . . .	9
2.4.1	Slot 3 . . . . .	9
2.4.2	Slot 4 . . . . .	10
2.4.3	Slot 5 . . . . .	11
2.4.4	Slot 6 . . . . .	12
2.4.5	Slot 7 . . . . .	13
2.5	FID Slots . . . . .	14
2.5.1	Slot 0 . . . . .	14
2.5.2	Slot 1 . . . . .	15
2.5.3	Slot 2 . . . . .	16
<b>A</b>	<b>Summary</b>	<b>17</b>
A.1	Status . . . . .	17
A.2	Comments . . . . .	17

# 1 Front

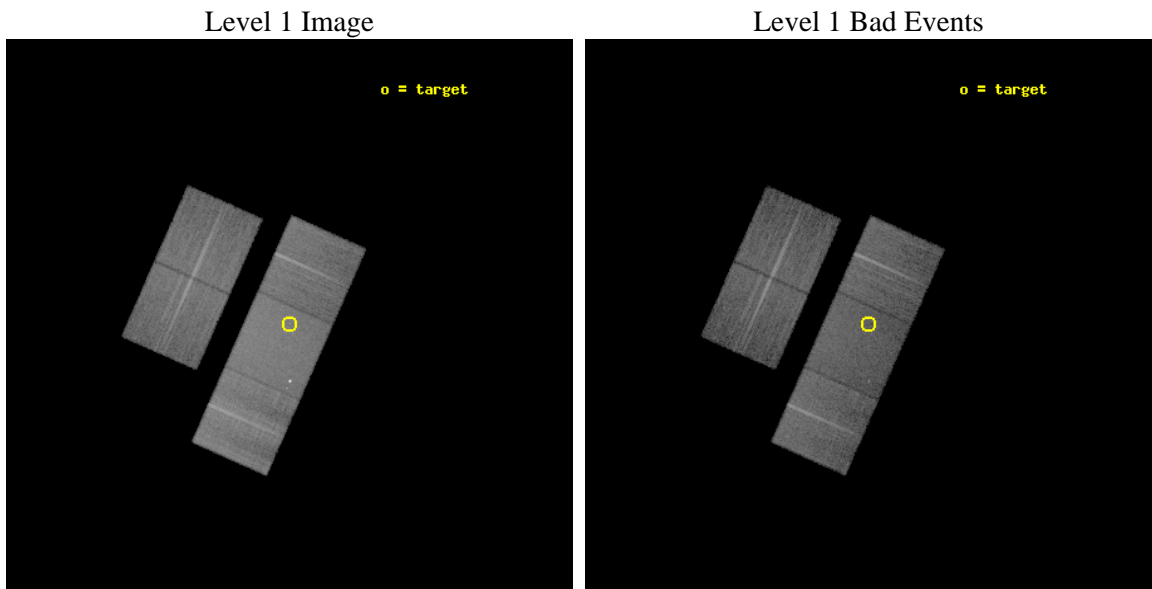
seq_num	701567	Sequence number
obs_id	8252	Observation id
title	A snapshot X-ray/radio survey of AGNs selected from the long menu of SDSS galaxies	Proposal title
observer	Dr. Sebastian Heinz	Principal investigator
object	2MASX J083642+533431	Source name
dtcycle	0	&#160
cycle	P	events from which exps? Prim/Second/Both
ra_targ	129.178417	Observer's specified target RA [deg]
dec_targ	53.5757	Observer's specified target Dec [deg]
ra_nom	129.17995153446	Nominal RA [deg]
dec_nom	53.577563937549	Nominal Dec [deg]
roll_nom	113.95363711162	Nominal Roll [deg]
revision	3	Processing version of data
ontime	16144.800124168	Sum of GTIs [s]
livetime	15933.856424917	Livetime [s]
ontime2	16141.659104049	Sum of GTIs [s]
ontime3	16144.800124168	Sum of GTIs [s]
ontime6	16138.518163502	Sum of GTIs [s]
ontime7	16144.800124168	Sum of GTIs [s]
ontime8	16141.659143865	Sum of GTIs [s]
l2events	138081	Number of level 2 events



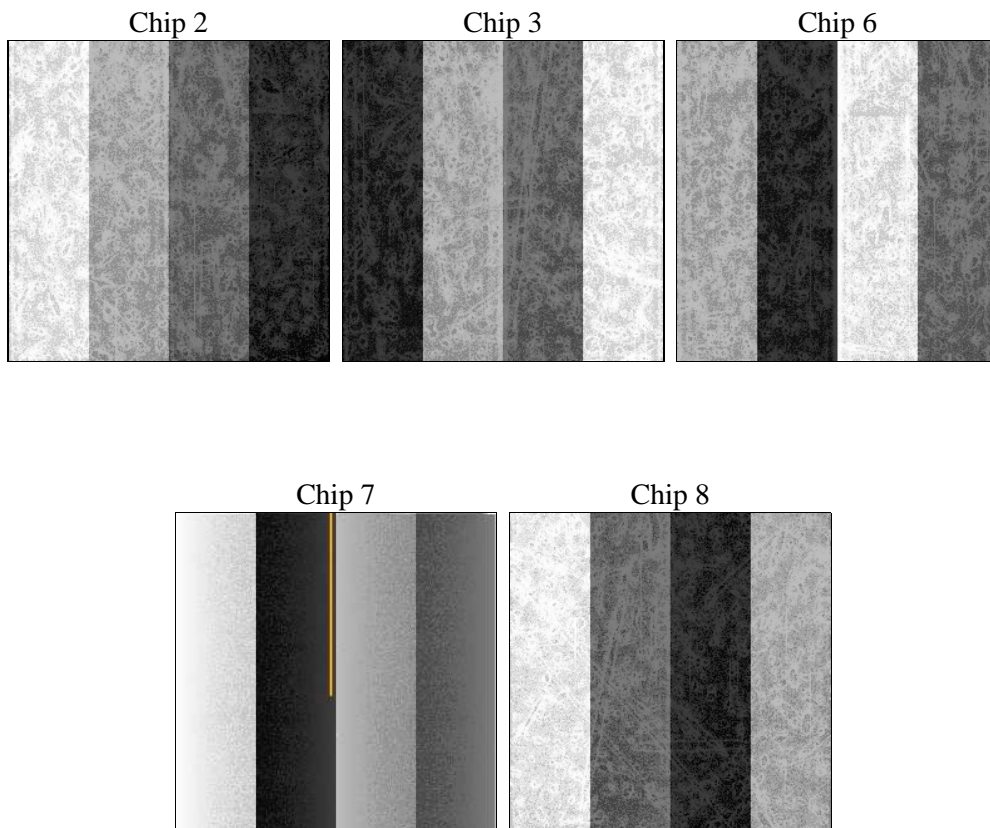
## 2 OBI

### 2.1 OBI

#### 2.1.1 Images



#### 2.1.2 Bias



### 2.1.3 Parameters

obi_num	3	Obi number	sched_exp_time	16000.000000	[s] Scheduled observation exposure time
ascdsver	8.4.3.1	Processing system revision	ontime	16144.800124168	Sum of GTIs [s]
caldbver	4.4.9	&#160	ontime2	16141.659104049	Sum of GTIs [s]
date	2012-04-15T14:35:38	Date and time of file creation	ontime3	16144.800124168	Sum of GTIs [s]
revision	3	Processing version of data	ontime6	16138.518163502	Sum of GTIs [s]
			ontime7	16144.800124168	Sum of GTIs [s]
			ontime8	16141.659143865	Sum of GTIs [s]
			l1events	731256	Number of level 1 events

### 2.1.4 Events

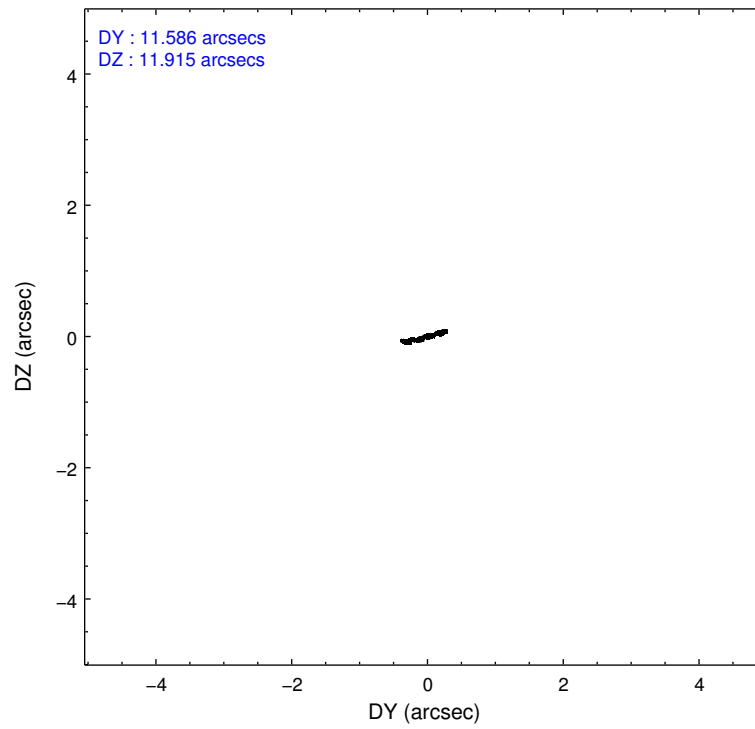
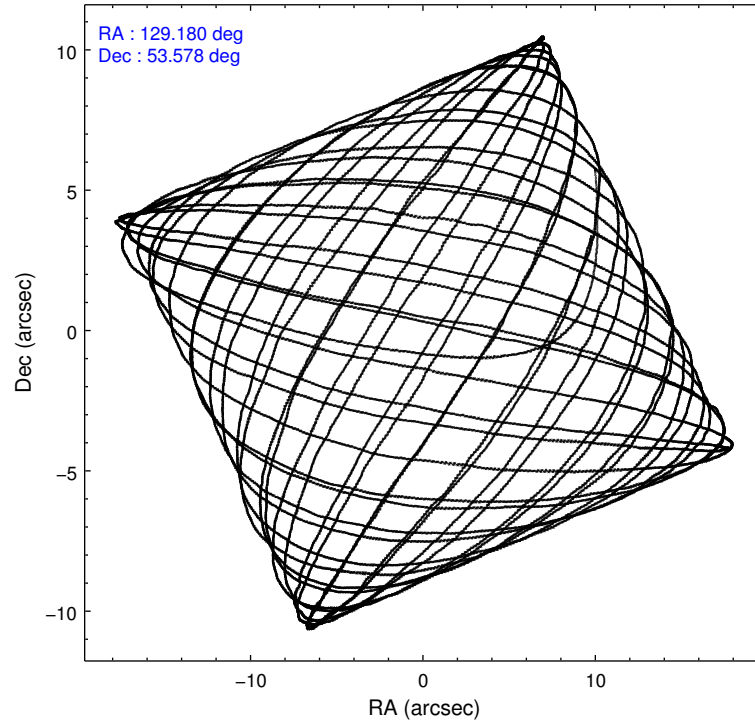
	ccd 2	ccd 3	ccd 6	ccd 7	ccd 8
level 1 events	122932	120579	130562	179530	177653
rejected events	105789	103936	113572	100914	125826
rejected %	86%	86%	86%	56%	70%

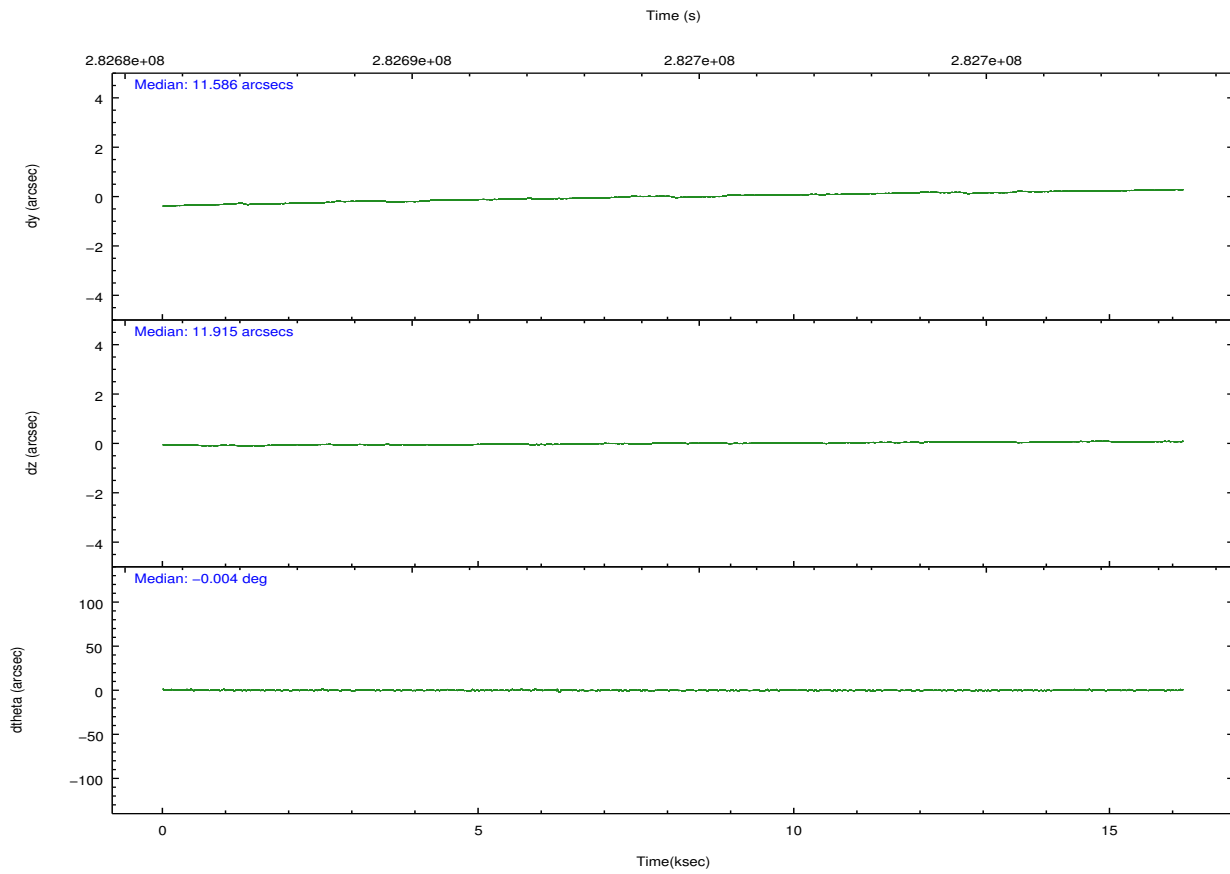
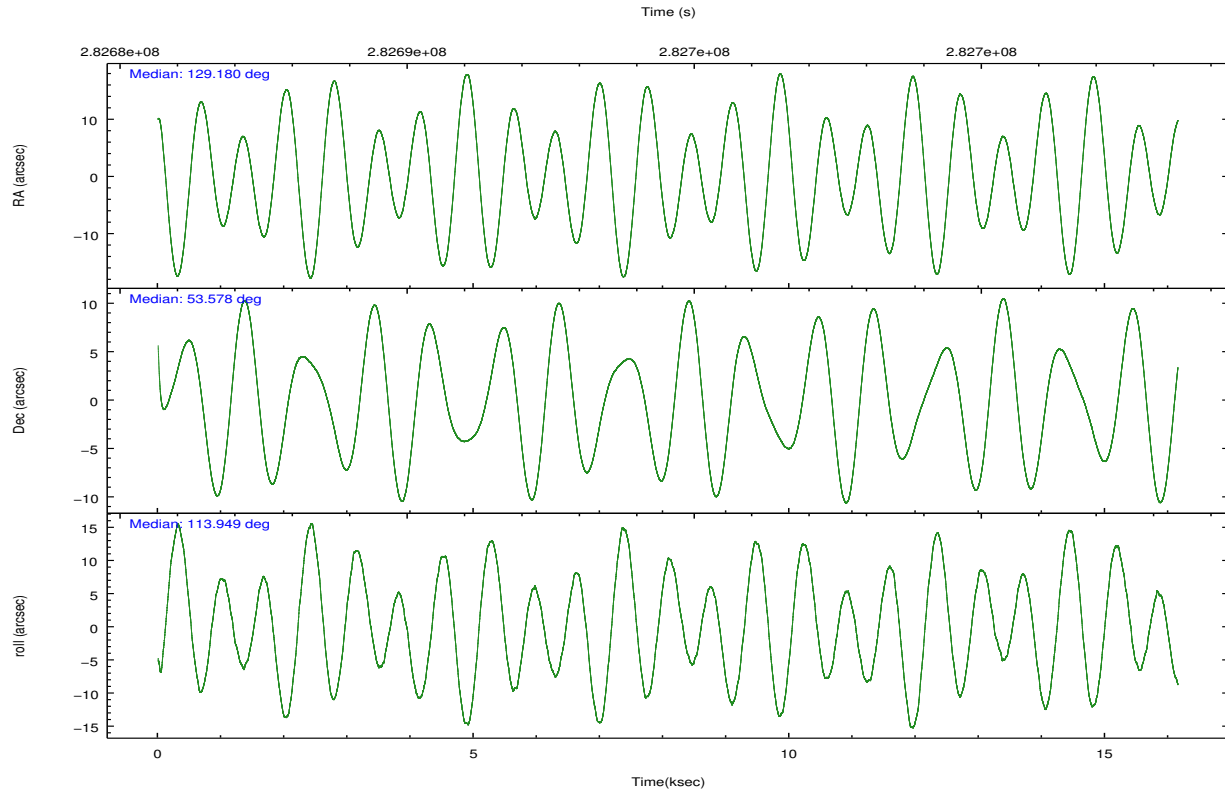
	ccd 2	ccd 3	ccd 6	ccd 7	ccd 8
grade 0 events	7753	7116	6747	8467	17534
	6%	5%	5%	4%	9%
grade 1 events	70	83	74	215	158
	0%	0%	0%	0%	0%
grade 2 events	3748	3637	4052	16125	9615
	3%	3%	3%	8%	5%
grade 3 events	1383	1423	1471	6971	7157
	1%	1%	1%	3%	4%
grade 4 events	1499	1470	1434	7088	6431
	1%	1%	1%	3%	3%
grade 5 events	4915	5723	5946	16545	7945
	3%	4%	4%	9%	4%
grade 6 events	2807	3056	3333	40236	11358
	2%	2%	2%	22%	6%
grade 7 events	100757	98071	107505	83883	117455
	81%	81%	82%	46%	66%

## 2.2 Compared Parameters

Parameter	Planned	Actual	Parameter	Planned	Actual
Instrument	ACIS	ACIS	Obspar format version number	7	7
Detector	ACIS-23678	ACIS-23678	Obspar file type	PREDICTED	ACTUAL
Grating	NONE	NONE	Obspar update status	NONE	UPDATED
Data mode	VFAINT	VFAINT	CCD I0 on	N	N
Observation mode	POINTING	POINTING	CCD I1 on	N	N
[deg] Pointing RA	129.217570	129.179951534461	CCD I2 on	O1	Y
[deg] Pointing Dec	53.561774	53.57756393754878	CCD I3 on	O2	Y
[deg] Pointing Roll	113.766740	113.9536371116234	CCD S0 on	N	N
[mm] SIM focus pos	-0.684267	-0.6828225247311905	CCD S1 on	N	N
[mm] SIM defocus	0	0.001444936568705701	CCD S2 on	O4	Y
[mm] SIM translation stage pos	-190.132523	-190.1425803651734	CCD S3 on	Y	Y
[mm] SIM translation stage offset	0	0.01005778216563158	CCD S4 on	O3	Y
[s] Observation start time (MET)	282686628.184000	282685613.1805	CCD S5 on	N	N
Observation start date	2006-12-16T20:02:43	2006-12-16T19:46:53	Number of optional ACIS chips dropped	0	0
[s] Observation end time (MET)	282702628.184000	282704087.78138	On-chip summing requested	N	N
Observation end date	2006-12-17T00:29:23	2006-12-17T00:54:47	Subarray requested	NONE	NONE
Read mode	TIMED	TIMED	Alternating exposures requested	N	N
			[s] Primary exposure time	0.000000	3.1

## 2.3 Aspect



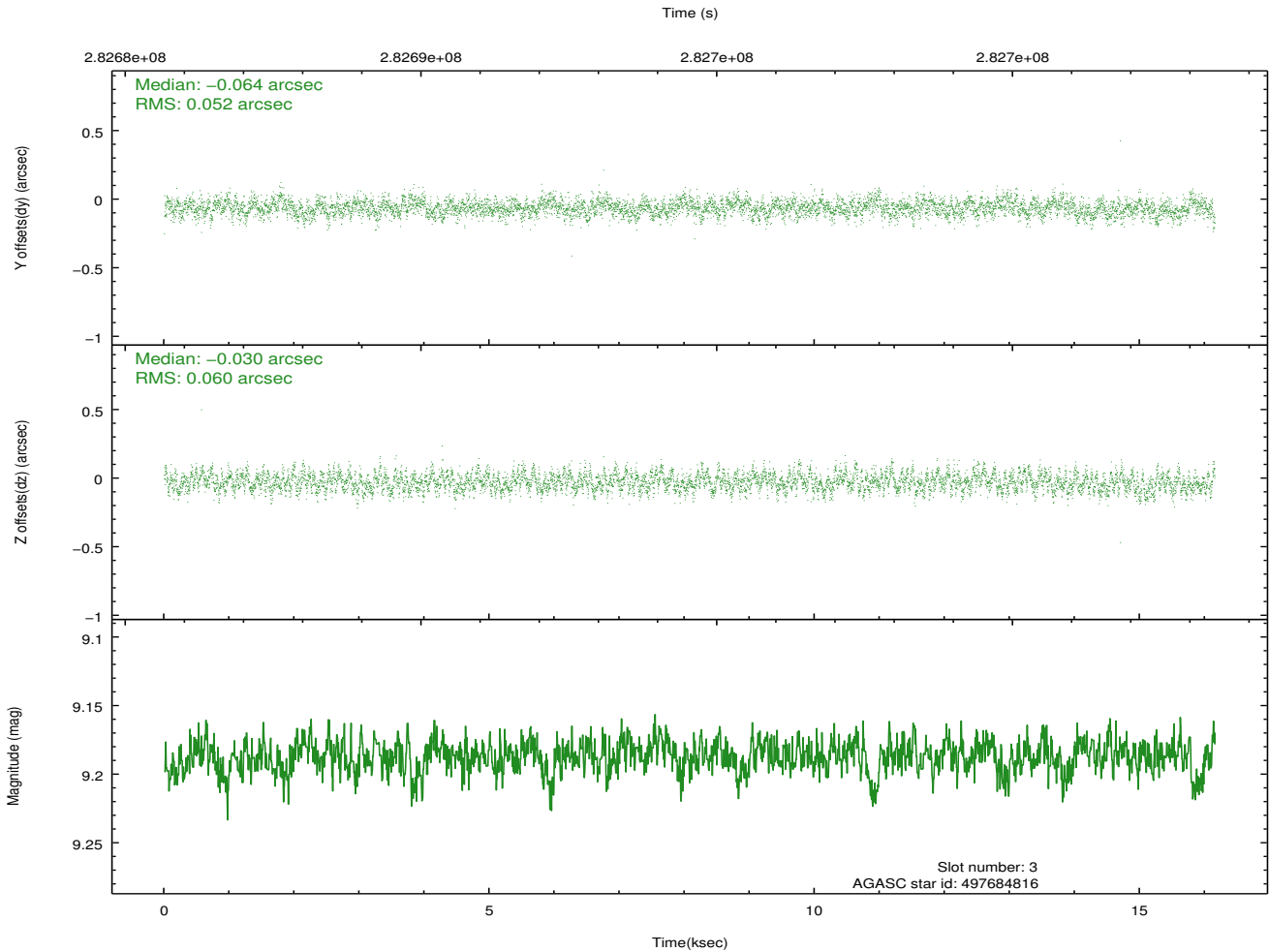
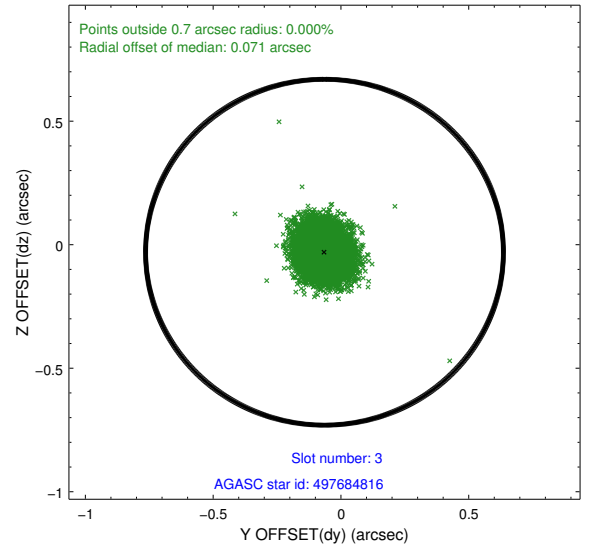
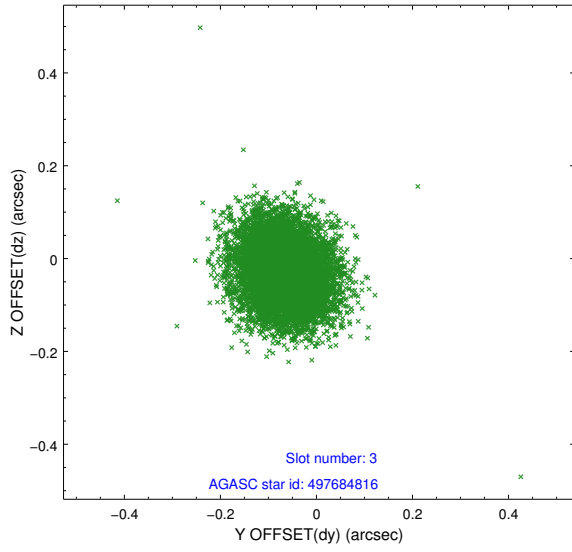


### Slot Statistics

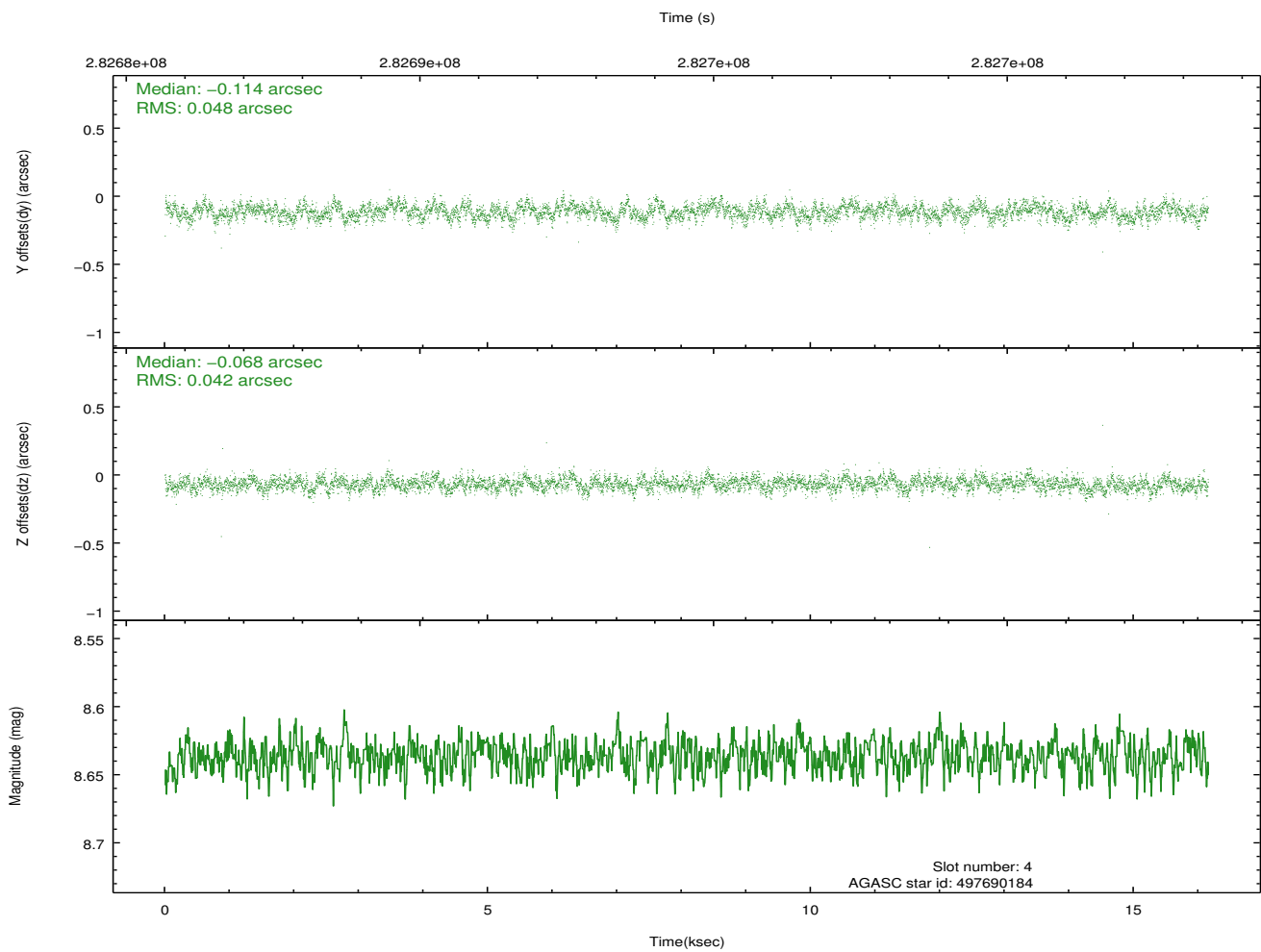
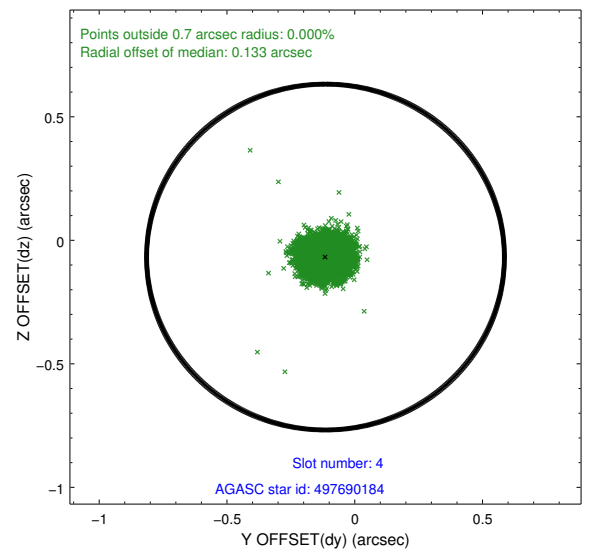
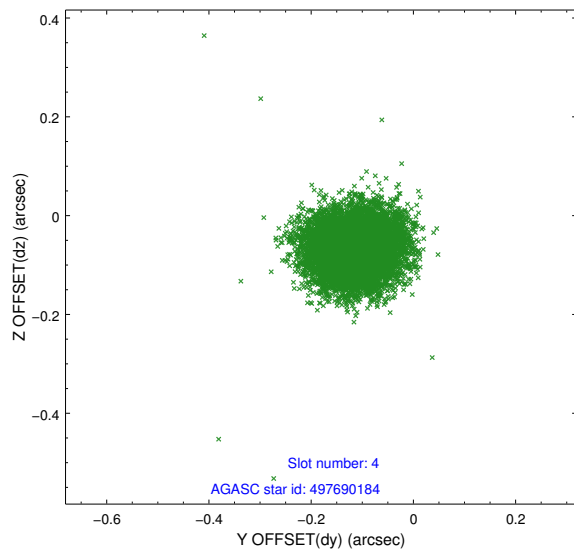
slot	status	id	mag	n_pts	med_dy	med_dz	dr1	dr2	ra	dec	mean_y	mean_z
0	FID	ACIS-S-2	7.10	3940	-0.038	-0.042	0.009	0.016	0.000000	0.000000	-764.48	-1733.20
1	FID	ACIS-S-4	7.20	3940	0.137	0.030	0.007	0.024	0.000000	0.000000	2148.85	175.08
2	FID	ACIS-S-5	7.23	3939	-0.129	0.021	0.009	0.015	0.000000	0.000000	-1817.07	169.04
3	GUIDE	497684816	9.19	7876	-0.064	-0.030	0.085	0.134	128.442903	53.709017	1158.62	1293.59
4	GUIDE	497690184	8.64	7875	-0.114	-0.068	0.068	0.108	128.443590	53.619311	863.98	1425.71
5	GUIDE	497816528	7.78	7878	0.038	-0.225	0.052	0.083	128.943832	53.725880	776.94	295.36
6	GUIDE	497816320	9.34	7873	0.049	0.230	0.105	0.168	130.376537	53.698440	-526.25	-2466.61
7	GUIDE	497815152	8.70	7879	0.091	0.095	0.066	0.106	130.515126	53.330771	-1861.71	-2228.30

## 2.4 Star Slots

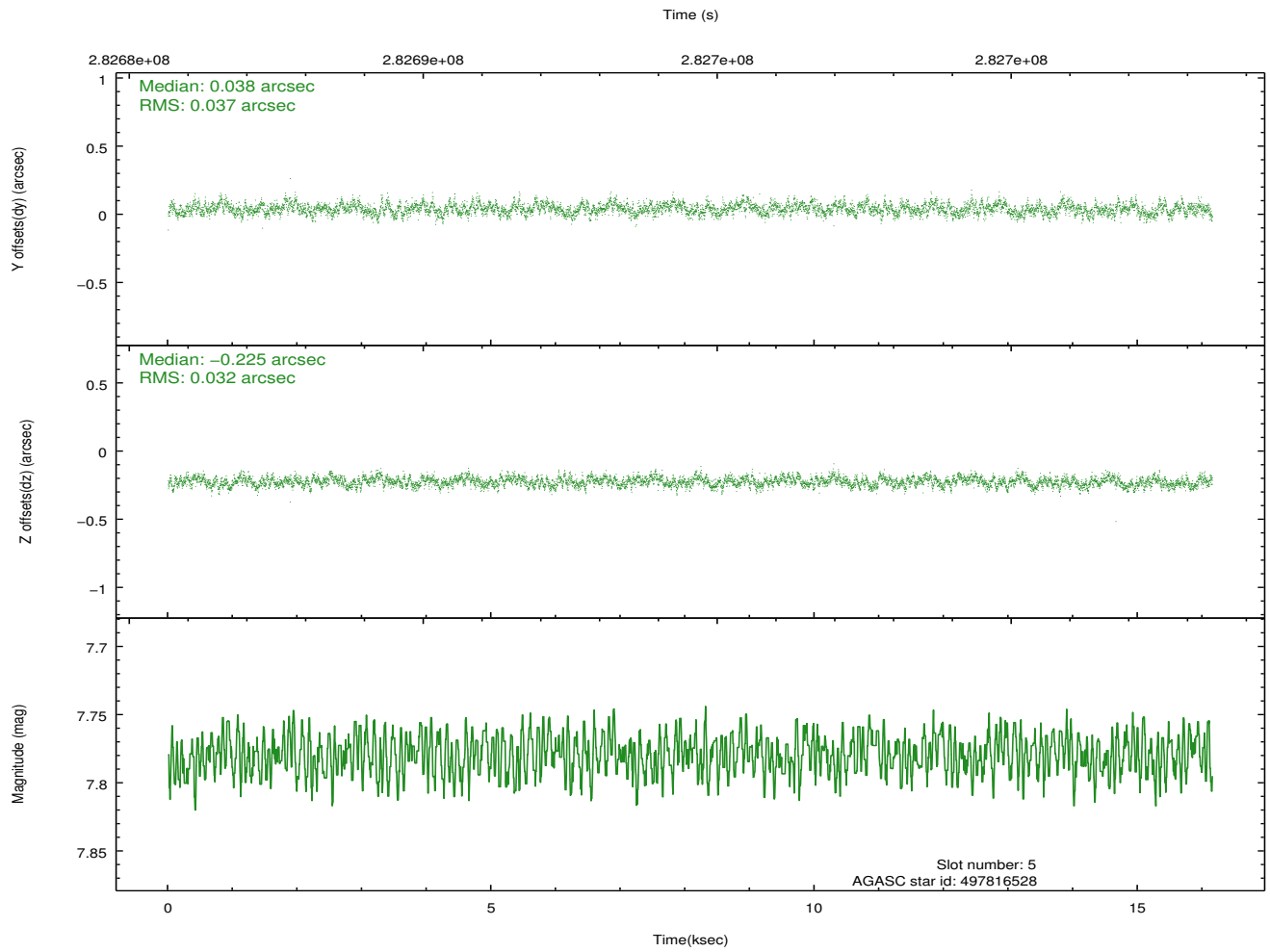
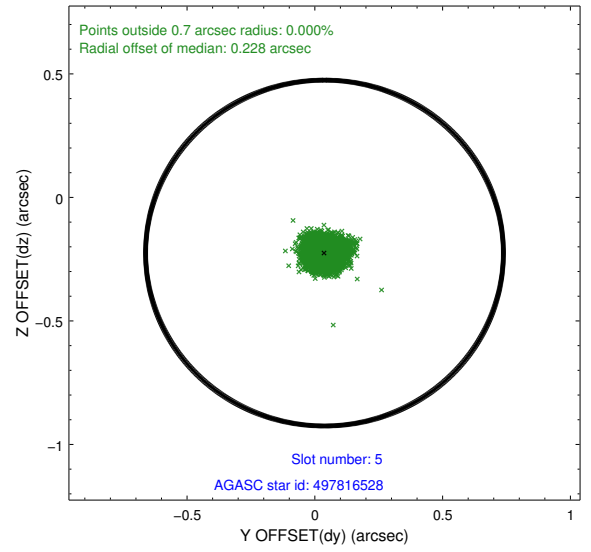
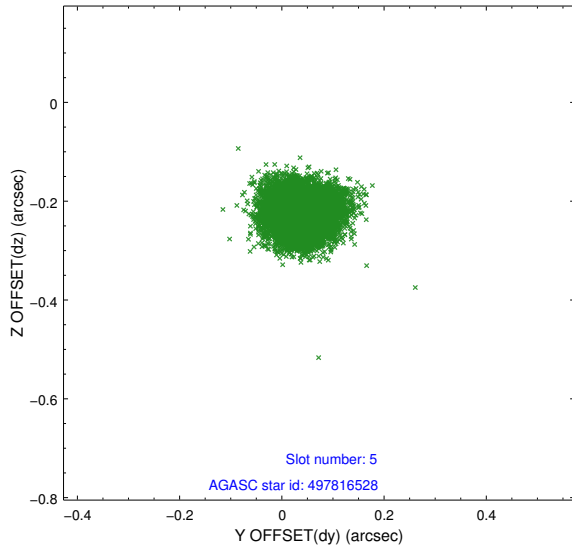
### 2.4.1 Slot 3



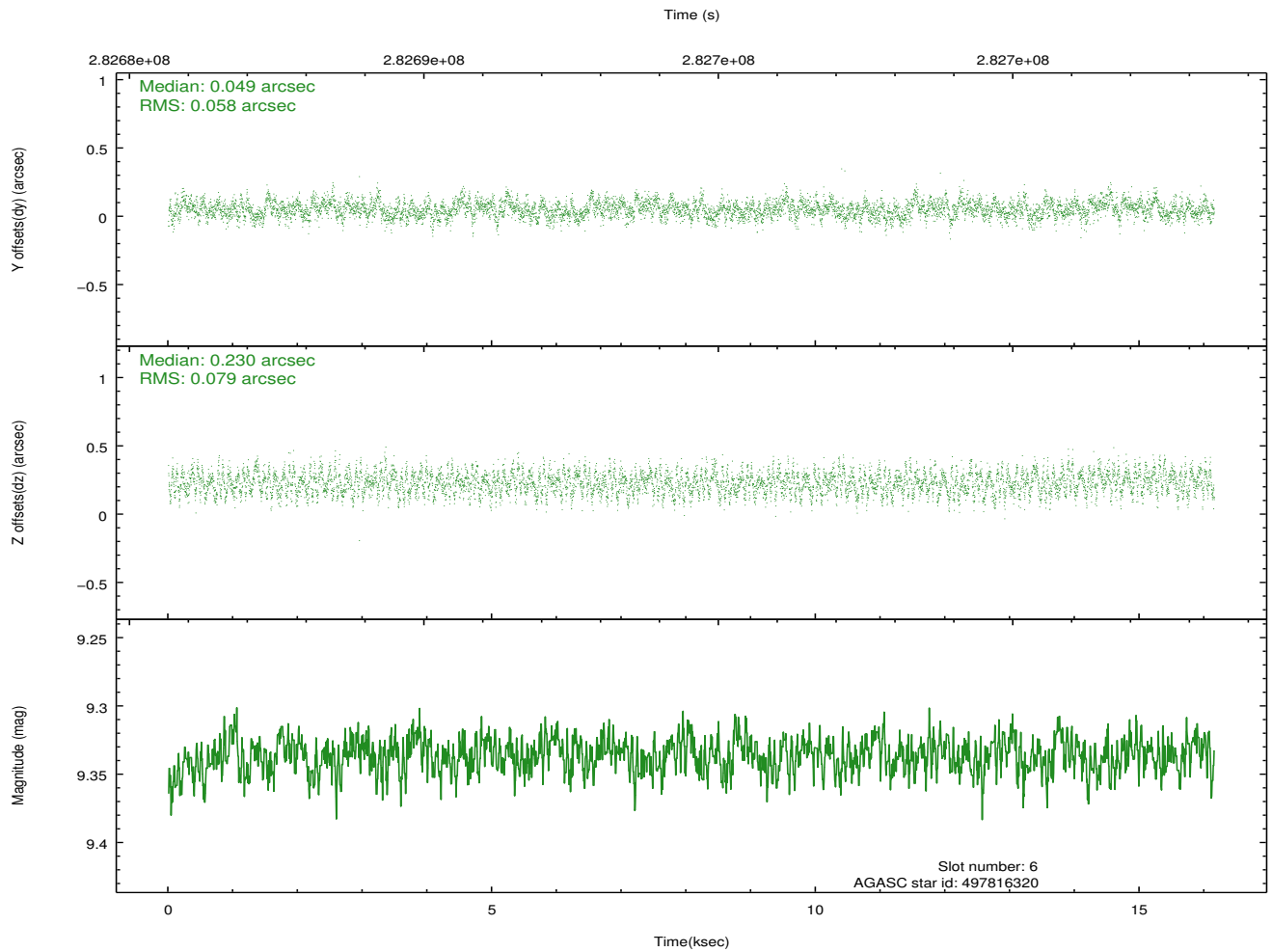
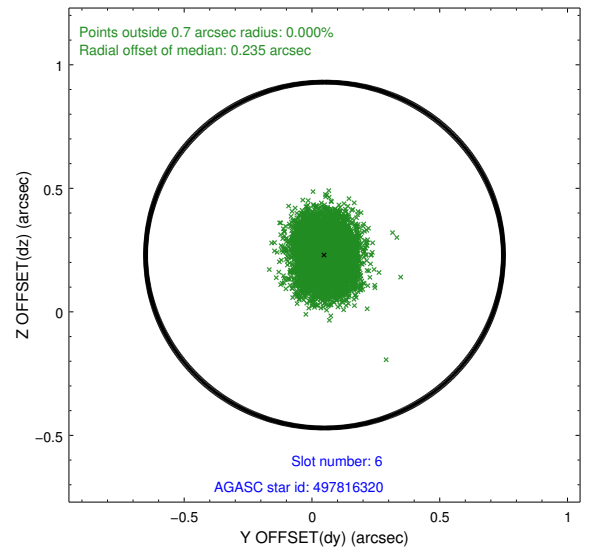
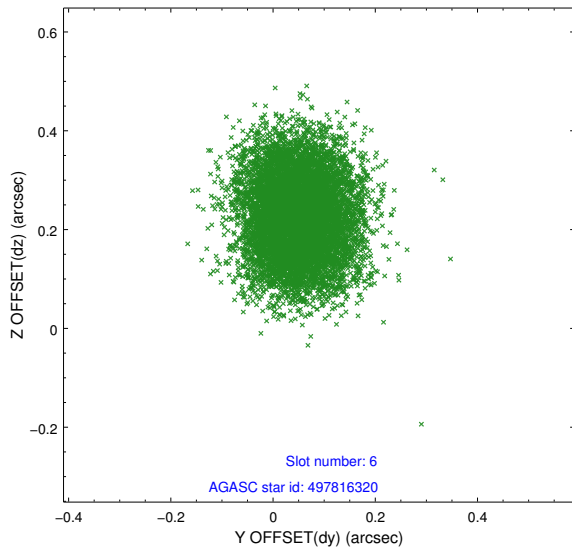
## 2.4.2 Slot 4



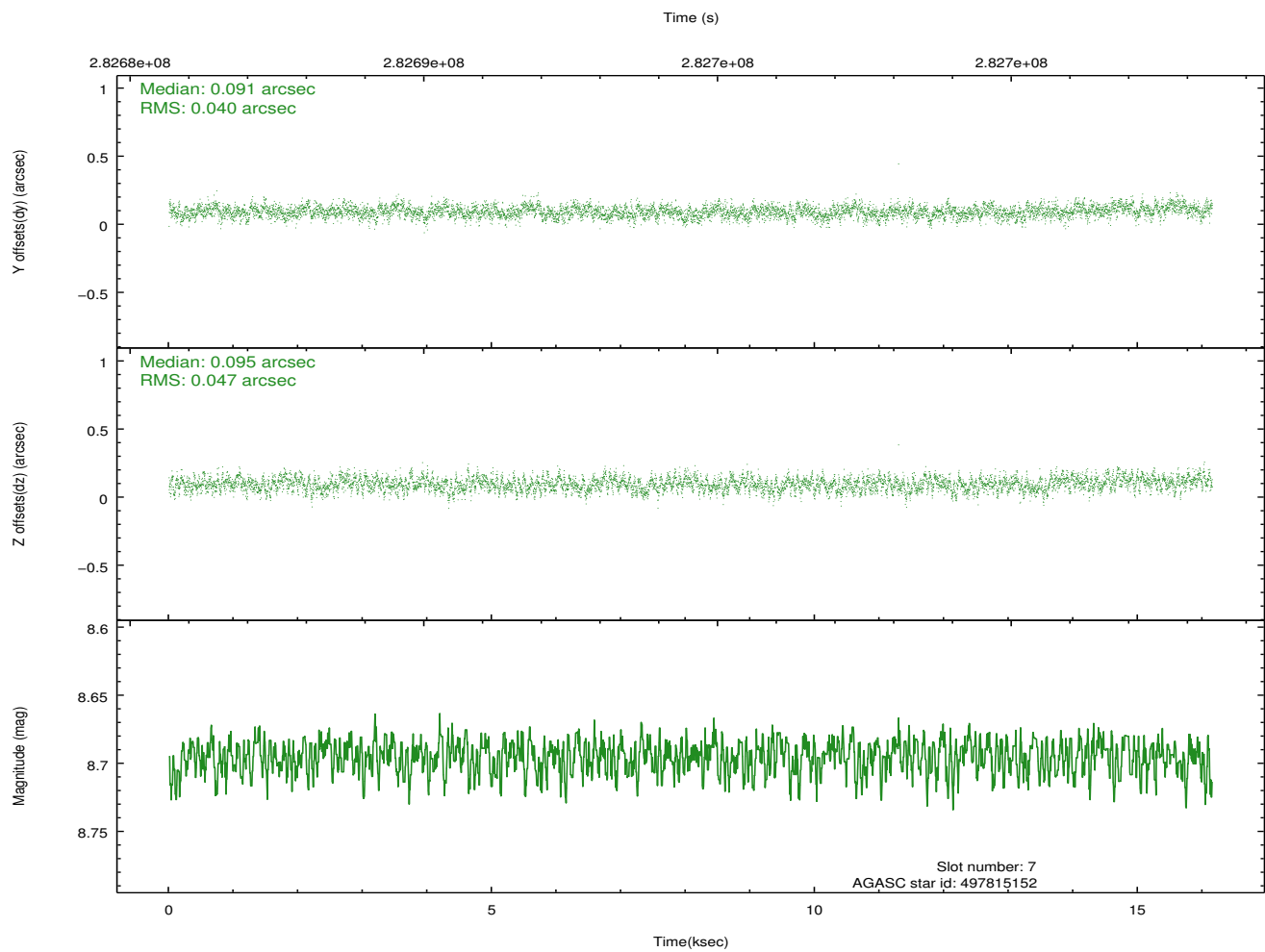
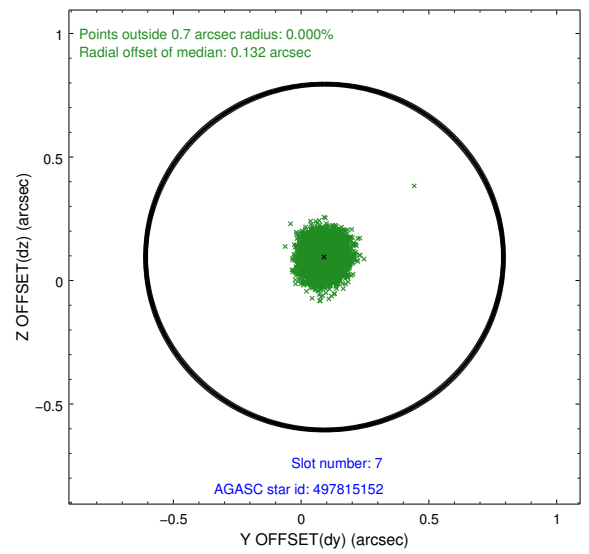
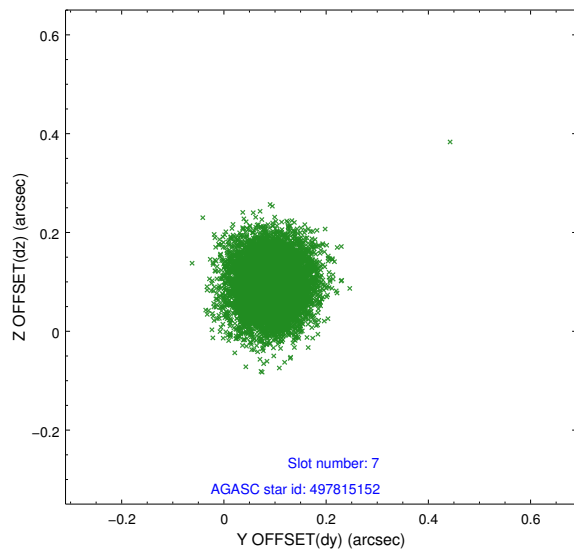
### 2.4.3 Slot 5



### 2.4.4 Slot 6

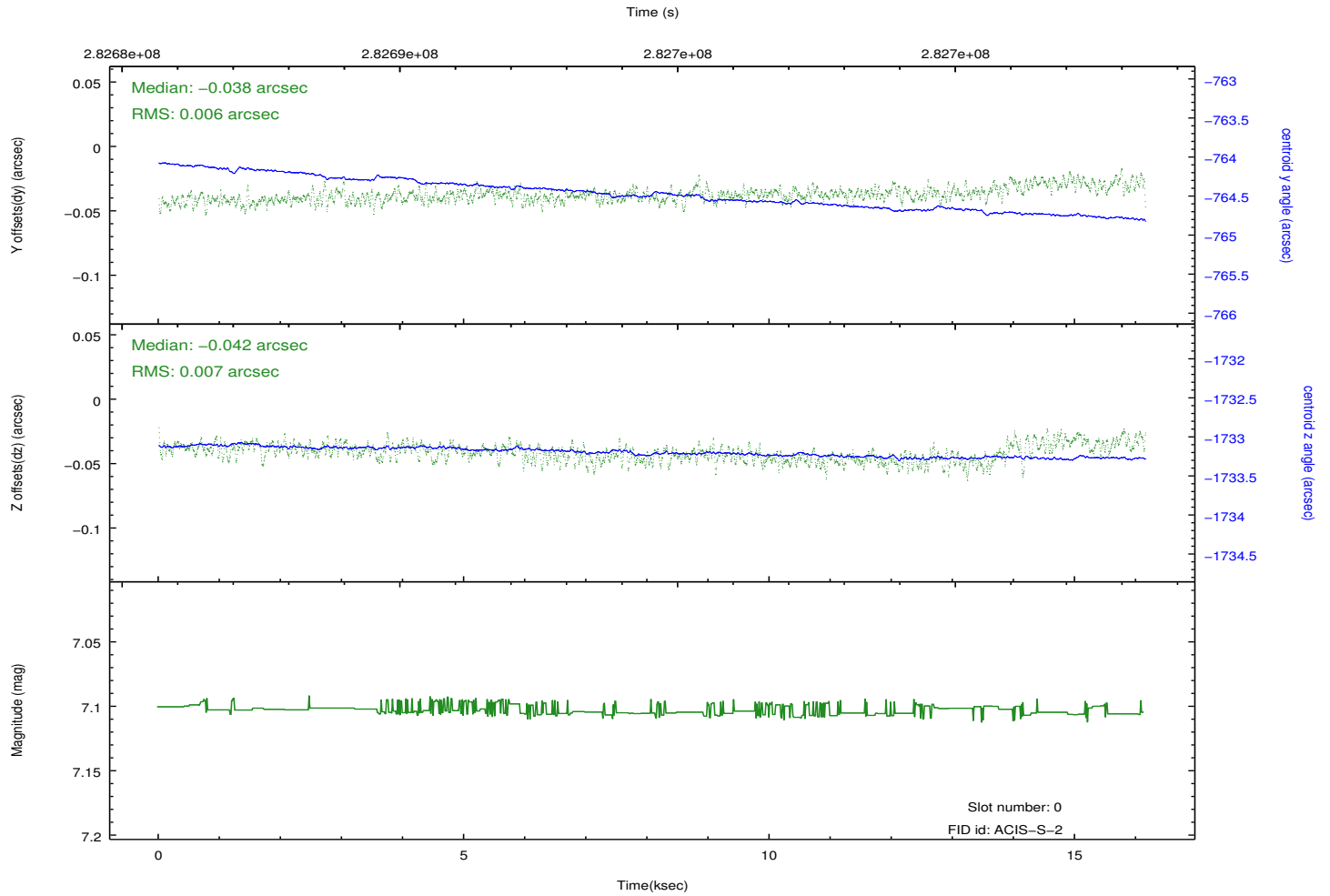
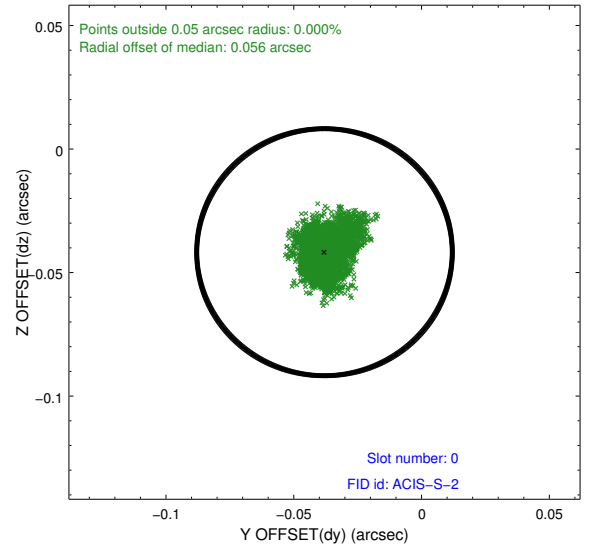
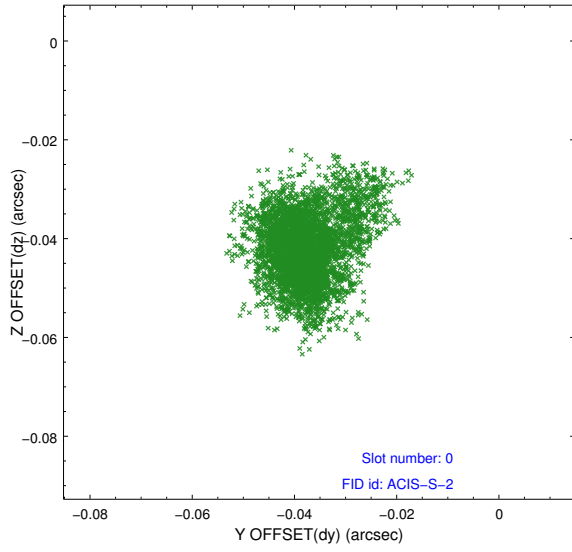


## 2.4.5 Slot 7

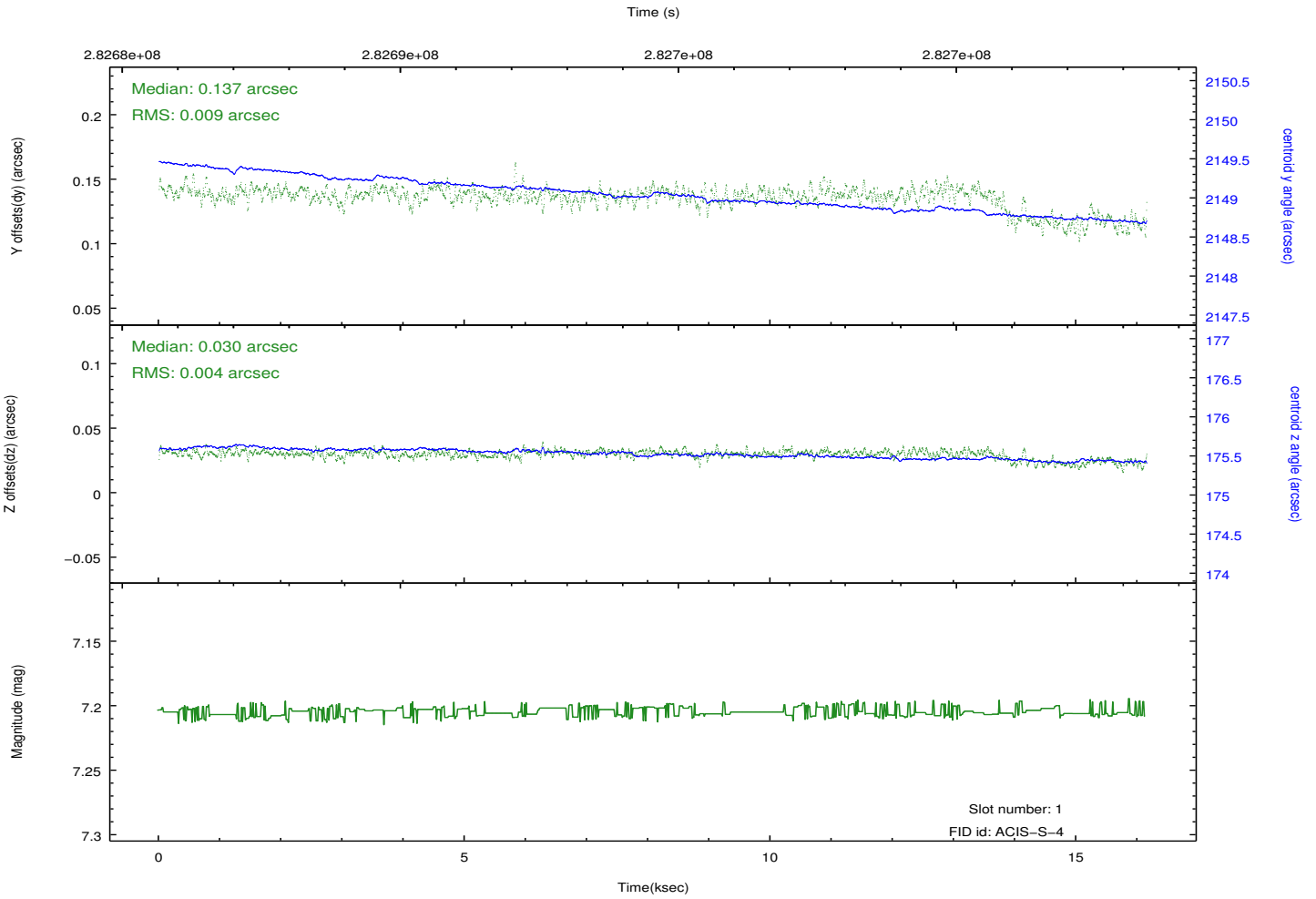
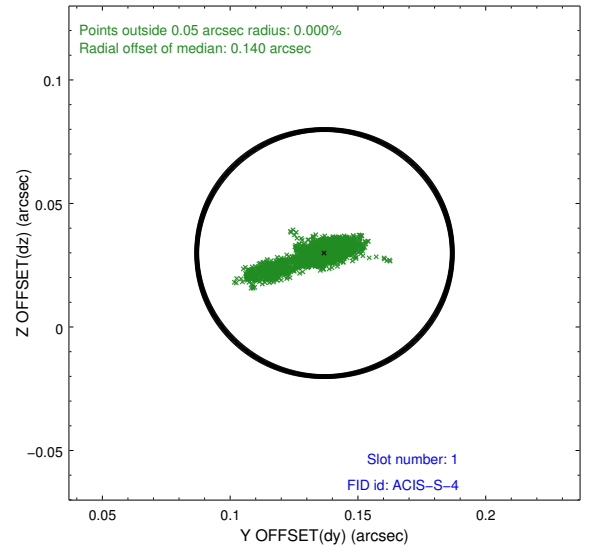
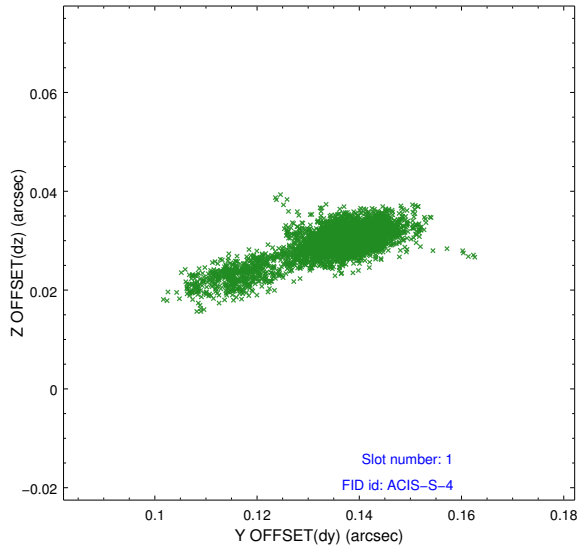


## 2.5 FID Slots

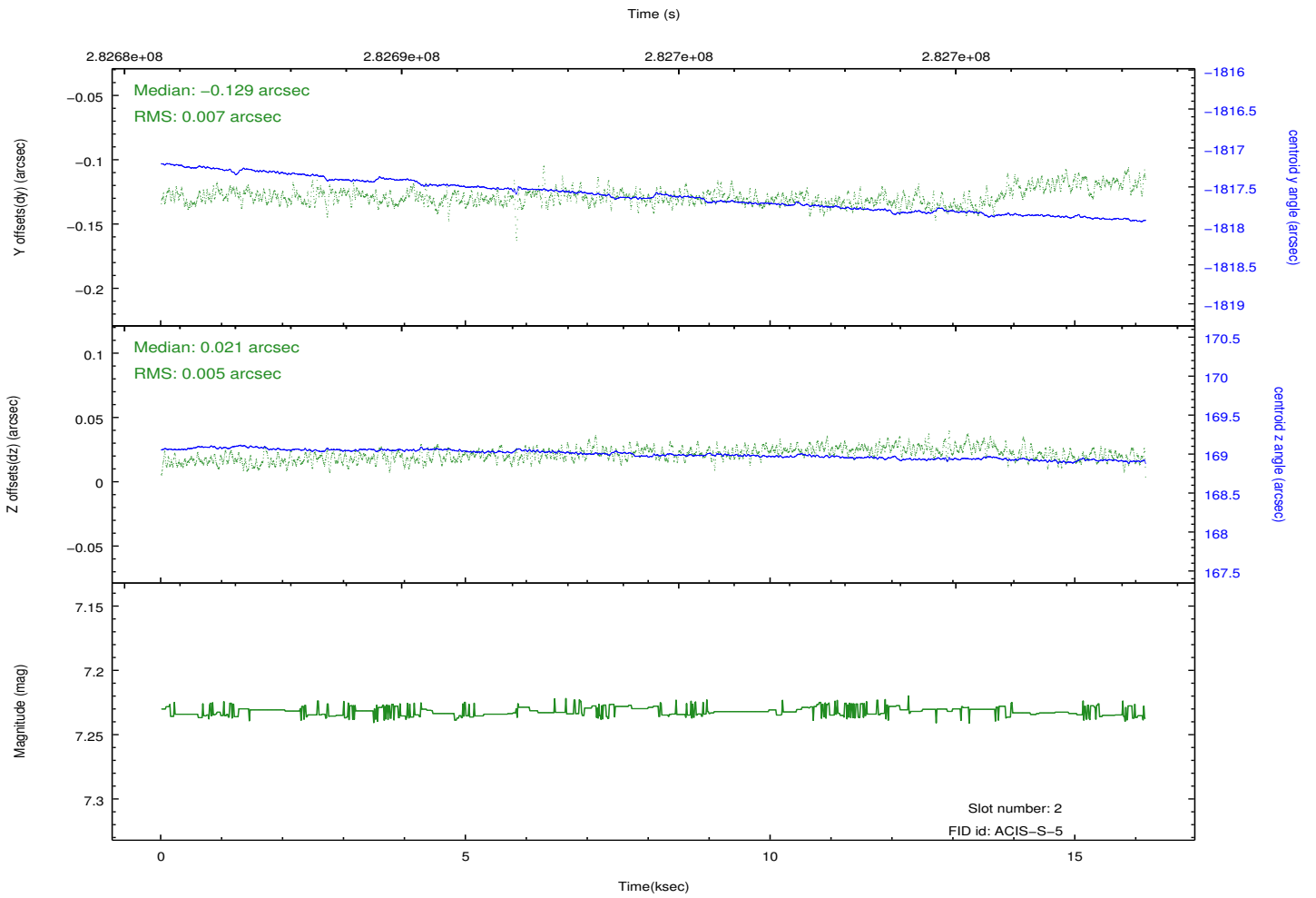
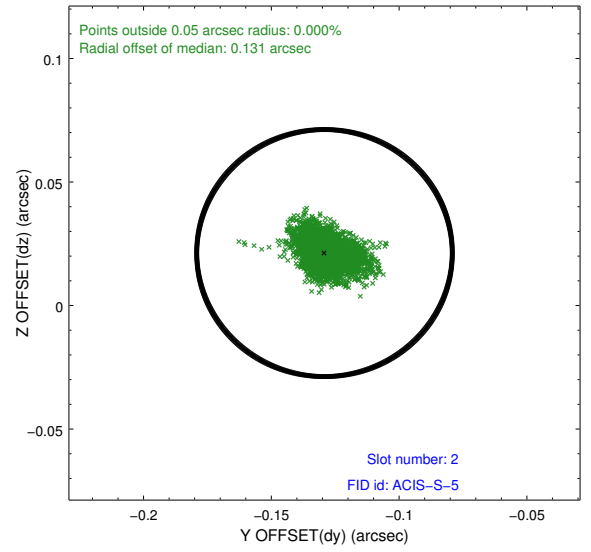
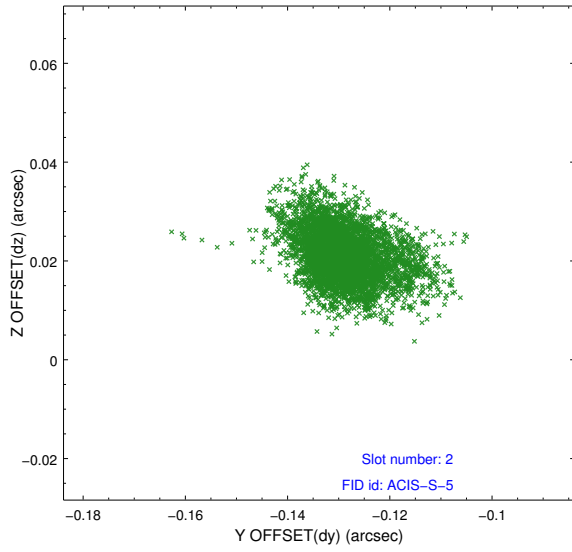
### 2.5.1 Slot 0



## 2.5.2 Slot 1



### 2.5.3 Slot 2



# A Summary

## A.1 Status

V&V Scientist	Jen Lauer
V&V Date (YYYY-MM-DD)	2012.04.18
V&V Edition	1
V&V Disposition and Status	OK
V&V Charge Time	16.1448001

## A.2 Comments