

V&V Reference Report

L2 ASCDS Version : 8.4.4

Observation 8472 - L2 Version 2
Chandra X-Ray Center

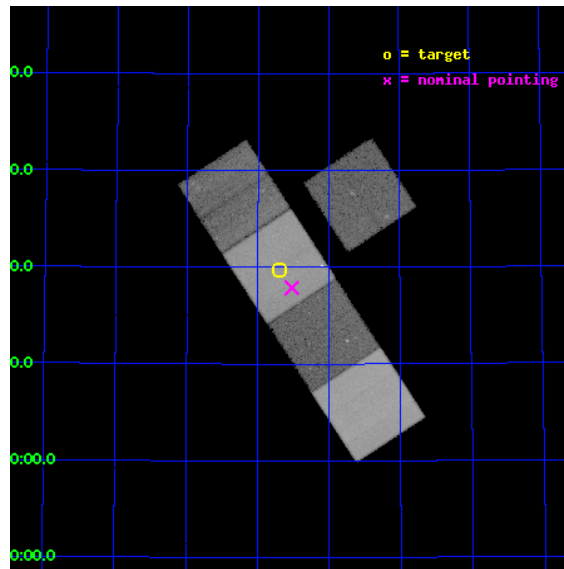
L2 Processing Date : Apr 29 2012

Contents

1	Front	2
2	OBI	3
2.1	OBI	3
2.1.1	Images	3
2.1.2	Bias	3
2.1.3	Parameters	4
2.1.4	Events	4
2.2	Compared Parameters	5
2.3	Aspect	6
2.4	Star Slots	9
2.4.1	Slot 3	9
2.4.2	Slot 4	10
2.4.3	Slot 5	11
2.4.4	Slot 6	12
2.4.5	Slot 7	13
2.5	FID Slots	14
2.5.1	Slot 0	14
2.5.2	Slot 1	15
2.5.3	Slot 2	16
A	Summary	17
A.1	Status	17
A.2	Comments	17

1 Front

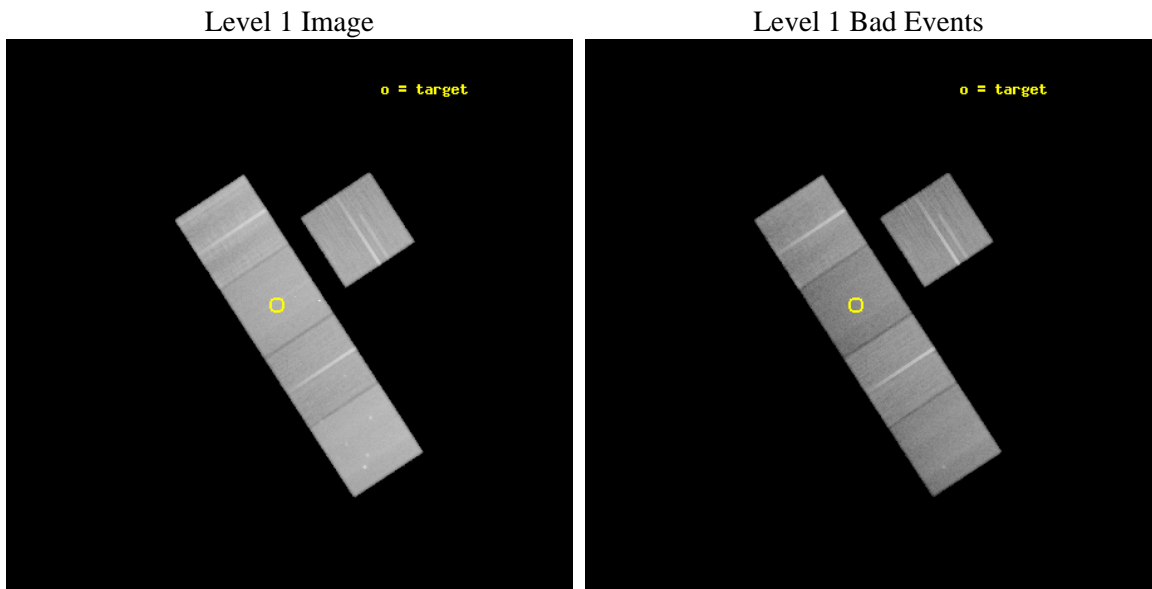
seq_num	800621	Sequence number
obs_id	8472	Observation id
title	The Formation of X-ray Luminous Groups	Proposal title
observer	Dr. John Mulchaey	Principal investigator
object	RXJ1648.7+6019	Source name
dtcycle	0	
cycle	P	events from which exps? Prim/Second/Both
ra_targ	252.174583	Observer's specified target RA [deg]
dec_targ	60.328583	Observer's specified target Dec [deg]
ra_nom	252.13027218766	Nominal RA [deg]
dec_nom	60.298181246373	Nominal Dec [deg]
roll_nom	236.81412481774	Nominal Roll [deg]
revision	2	Processing version of data
ontime	48161.600370407	Sum of GTIs [s]
livetime	47532.333605513	Livetime [s]
ontime3	48155.318439782	Sum of GTIs [s]
ontime5	48161.600370407	Sum of GTIs [s]
ontime6	48158.459400058	Sum of GTIs [s]
ontime7	48161.600370407	Sum of GTIs [s]
ontime8	48158.459410012	Sum of GTIs [s]
l2events	546243	Number of level 2 events



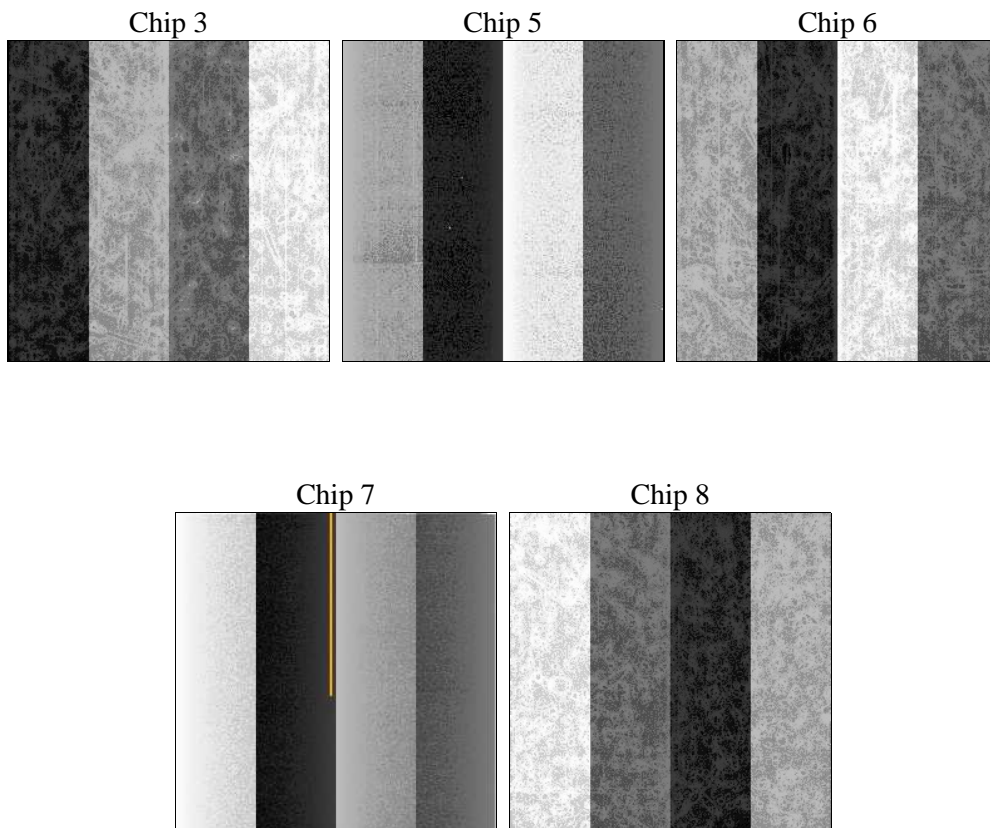
2 OBI

2.1 OBI

2.1.1 Images



2.1.2 Bias



2.1.3 Parameters

obi_num	0	Obi number	sched_exp_time	48000.000000	[s] Scheduled observation exposure time
ascdsver	8.4.4	Processing system revision	ontime	48161.600370407	Sum of GTIs [s]
caldbver	4.4.9	 	ontime3	48155.318439782	Sum of GTIs [s]
date	2012-04-29T03:08:44	Date and time of file creation	ontime5	48161.600370407	Sum of GTIs [s]
revision	2	Processing version of data	ontime6	48158.459400058	Sum of GTIs [s]
			ontime7	48161.600370407	Sum of GTIs [s]
			ontime8	48158.459410012	Sum of GTIs [s]
			l1events	2217275	Number of level 1 events

2.1.4 Events

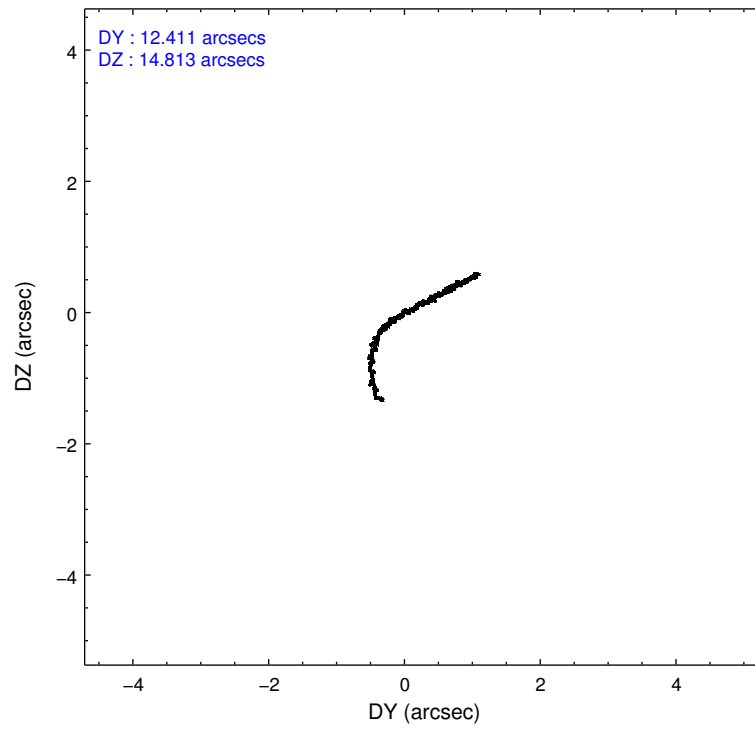
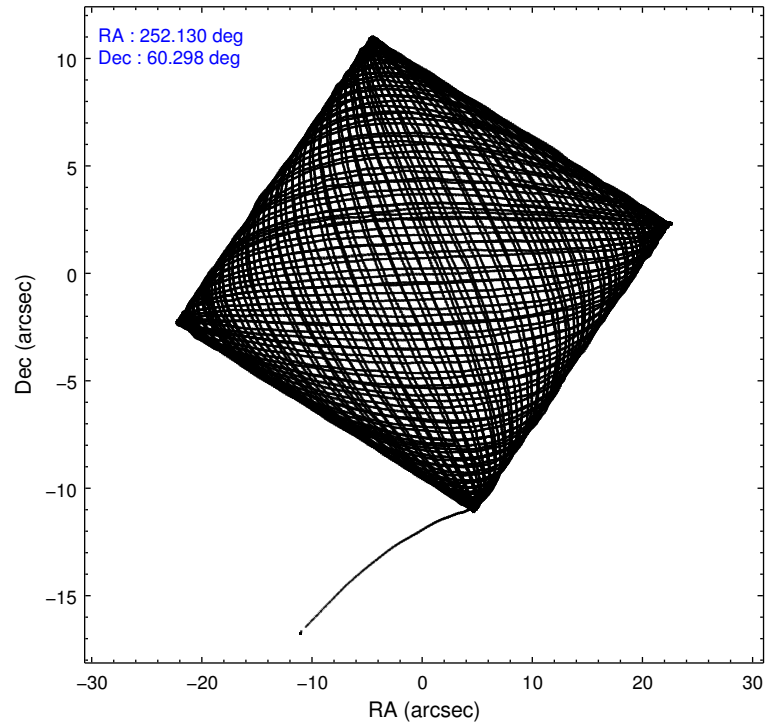
	ccd 3	ccd 5	ccd 6	ccd 7	ccd 8
level 1 events	378414	522067	394563	432766	489465
rejected events	343136	266532	355382	234935	371758
rejected %	90%	51%	90%	54%	75%

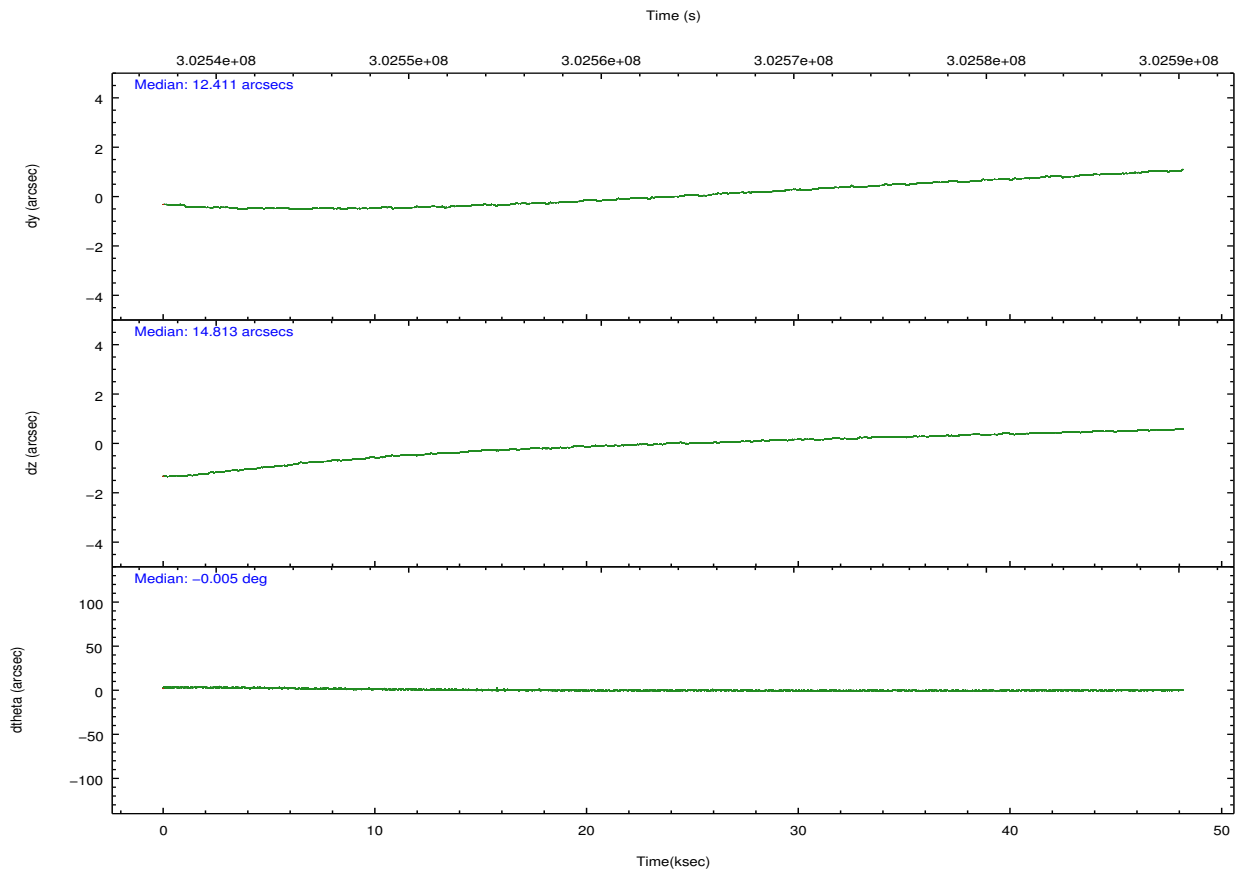
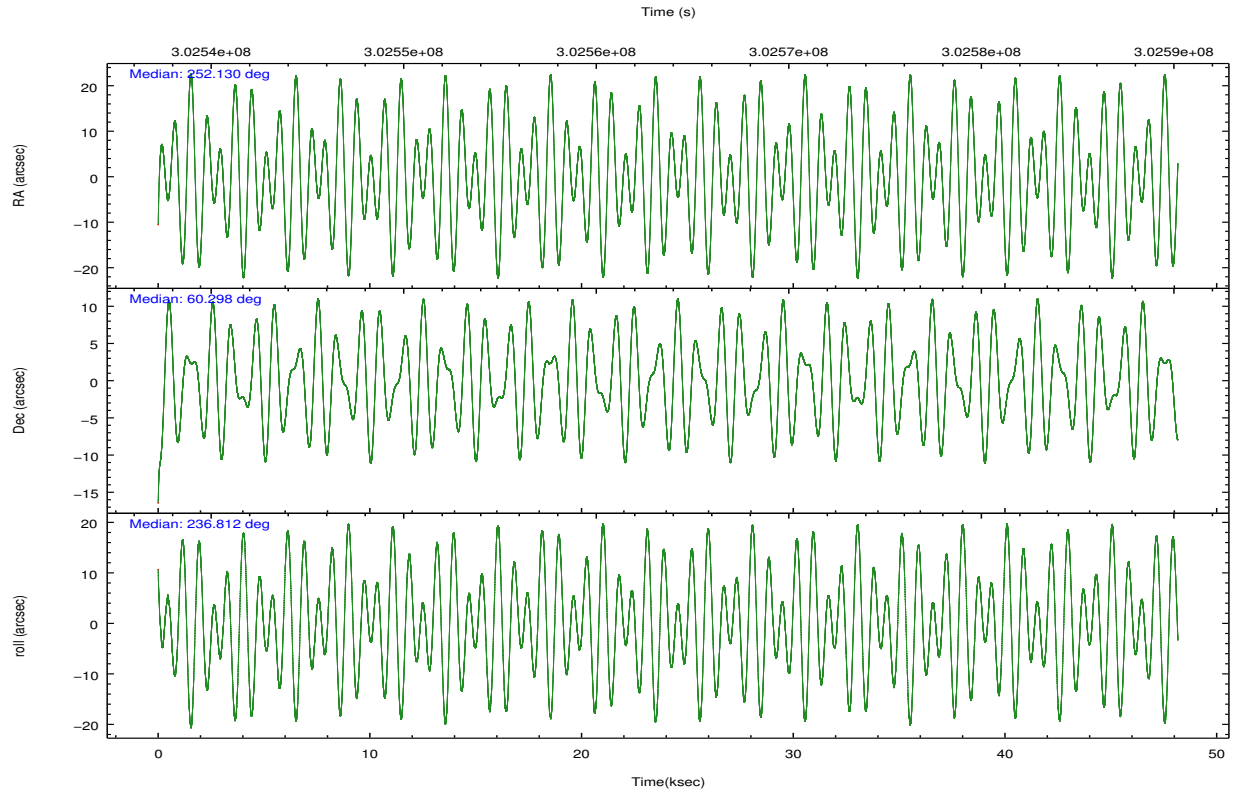
	ccd 3	ccd 5	ccd 6	ccd 7	ccd 8
grade 0 events	12361	20204	13687	19333	36068
	3%	3%	3%	4%	7%
grade 1 events	215	1258	187	538	390
	0%	0%	0%	0%	0%
grade 2 events	7576	75977	8599	40096	27331
	2%	14%	2%	9%	5%
grade 3 events	4146	11037	4223	18218	12289
	1%	2%	1%	4%	2%
grade 4 events	4098	10607	4167	17986	11414
	1%	2%	1%	4%	2%
grade 5 events	14886	40959	15435	45206	22238
	3%	7%	3%	10%	4%
grade 6 events	7159	138291	8592	102604	30780
	1%	26%	2%	23%	6%
grade 7 events	327973	223734	339673	188785	348955
	86%	42%	86%	43%	71%

2.2 Compared Parameters

Parameter	Planned	Actual	Parameter	Planned	Actual
Instrument	ACIS	ACIS	Obspar format version number	7	7
Detector	ACIS-35678	ACIS-35678	Obspar file type	PREDICTED	ACTUAL
Grating	NONE	NONE	Obspar update status	NONE	UPDATED
Data mode	VFAINT	VFAINT	CCD I0 on	N	N
Observation mode	POINTING	POINTING	CCD I1 on	N	N
[deg] Pointing RA	252.132604	252.1302721876645	CCD I2 on	N	N
[deg] Pointing Dec	60.325516	60.29818124637301	CCD I3 on	Y	Y
[deg] Pointing Roll	236.655470	236.814124817739	CCD S0 on	N	N
[mm] SIM focus pos	-0.684267	-0.6828225247311905	CCD S1 on	Y	Y
[mm] SIM defocus	0	0.001444936568705701	CCD S2 on	Y	Y
[mm] SIM translation stage pos	-190.132523	-190.1400660498719	CCD S3 on	Y	Y
[mm] SIM translation stage offset	0	0.00754346686406393	CCD S4 on	O1	Y
[s] Observation start time (MET)	302539818.184000	302538780.70146	CCD S5 on	N	N
Observation start date	2007-08-03T14:49:13	2007-08-03T14:33:00	Number of optional ACIS chips dropped	0	0
[s] Observation end time (MET)	302587818.184000	302588634.65386	On-chip summing requested	N	N
Observation end date	2007-08-04T04:09:13	2007-08-04T04:23:54	Subarray requested	NONE	NONE
Read mode	TIMED	TIMED	Alternating exposures requested	N	N
			[s] Primary exposure time	0.000000	3.1

2.3 Aspect



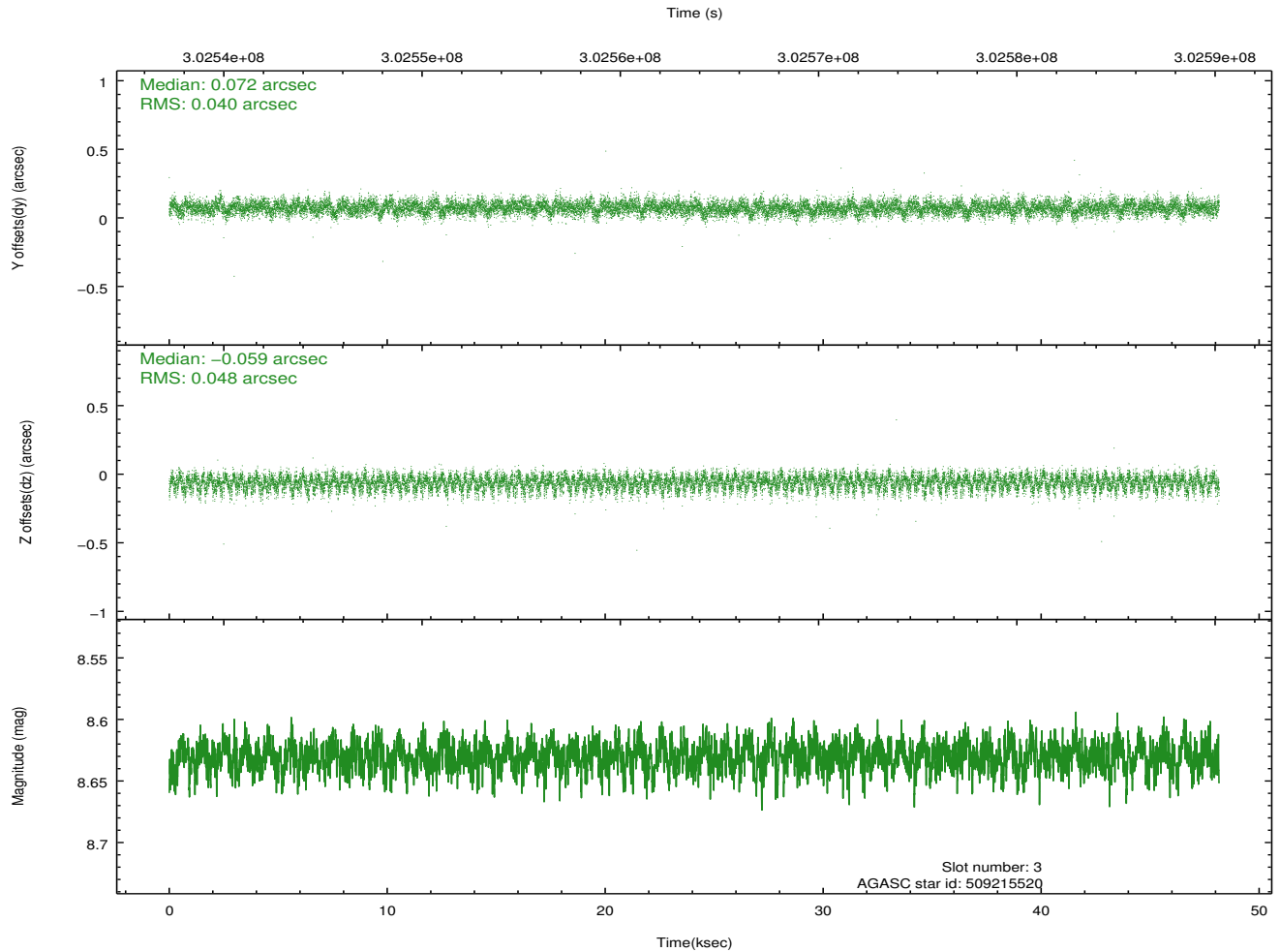
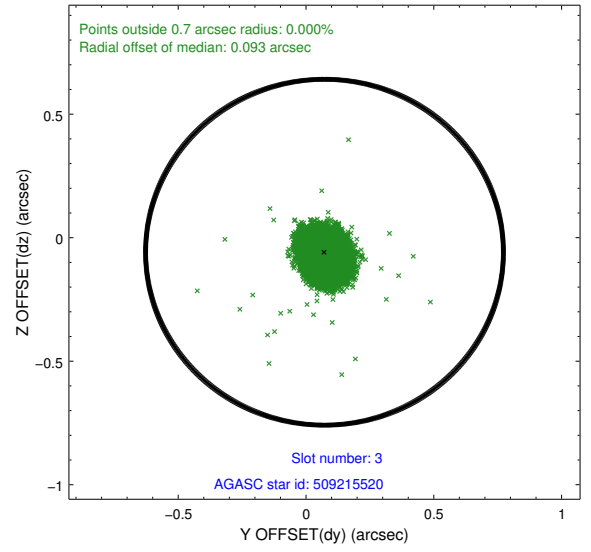
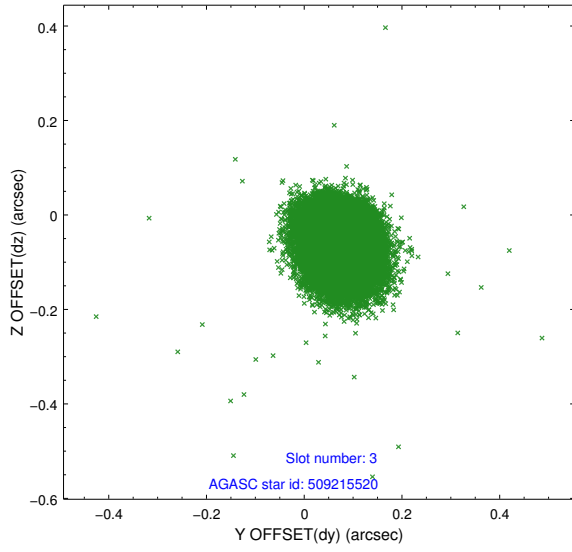


Slot Statistics

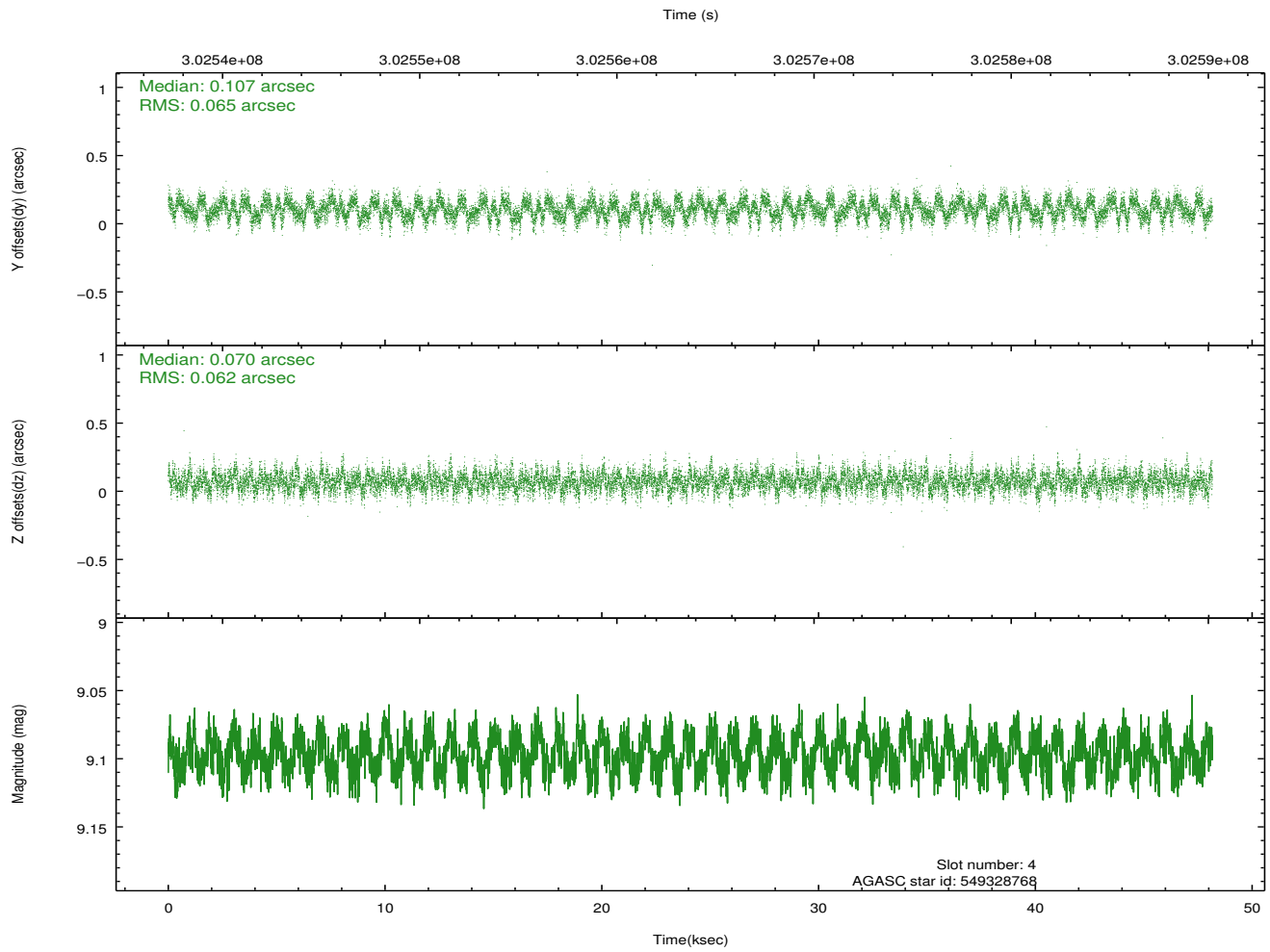
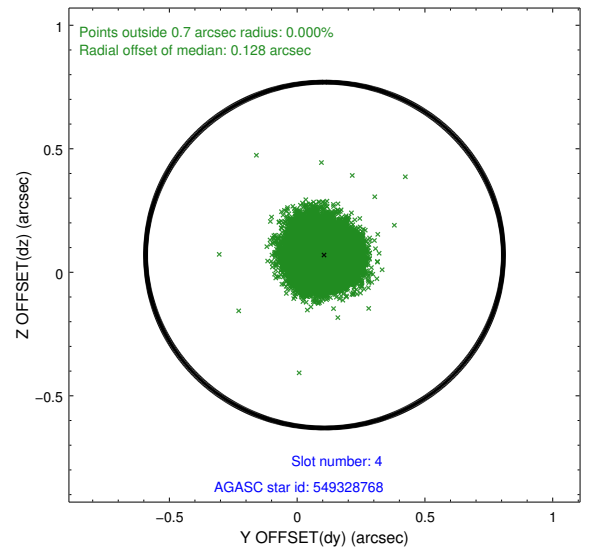
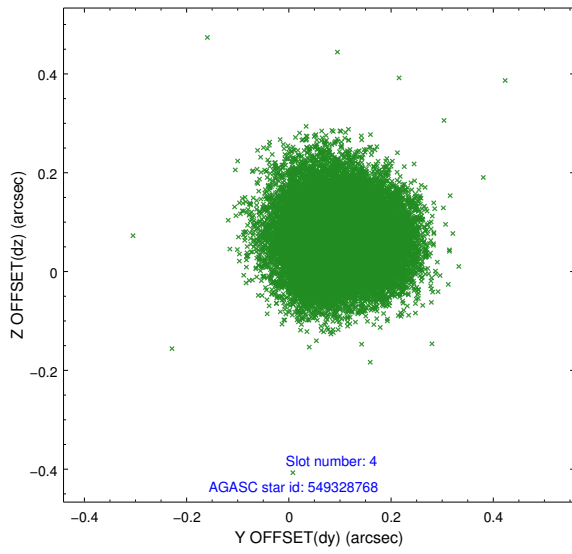
slot	status	id	mag	n_pts	med_dy	med_dz	dr1	dr2	ra	dec	mean_y	mean_z
0	FID	ACIS-S-2	7.09	11749	-0.052	-0.041	0.015	0.029	0.000000	0.000000	-765.44	-1736.11
1	FID	ACIS-S-4	7.19	11748	0.164	0.037	0.014	0.038	0.000000	0.000000	2148.04	172.50
2	FID	ACIS-S-5	7.22	11748	-0.144	0.012	0.018	0.030	0.000000	0.000000	-1818.42	166.09
3	GUIDE	509215520	8.63	23486	0.072	-0.059	0.066	0.106	251.654775	59.952657	1592.36	16.61
4	GUIDE	549328768	9.10	23472	0.107	0.070	0.097	0.151	252.433796	60.353152	-378.67	392.80
5	GUIDE	549341696	8.25	23495	0.078	-0.031	0.062	0.099	252.316212	60.136314	387.87	649.14
6	GUIDE	509215760	7.53	23498	-0.084	-0.011	0.058	0.099	252.218799	59.503353	2385.96	1758.63
7	GUIDE	549327856	7.29	23492	-0.175	0.033	0.050	0.080	252.981282	60.498079	-1354.04	910.18

2.4 Star Slots

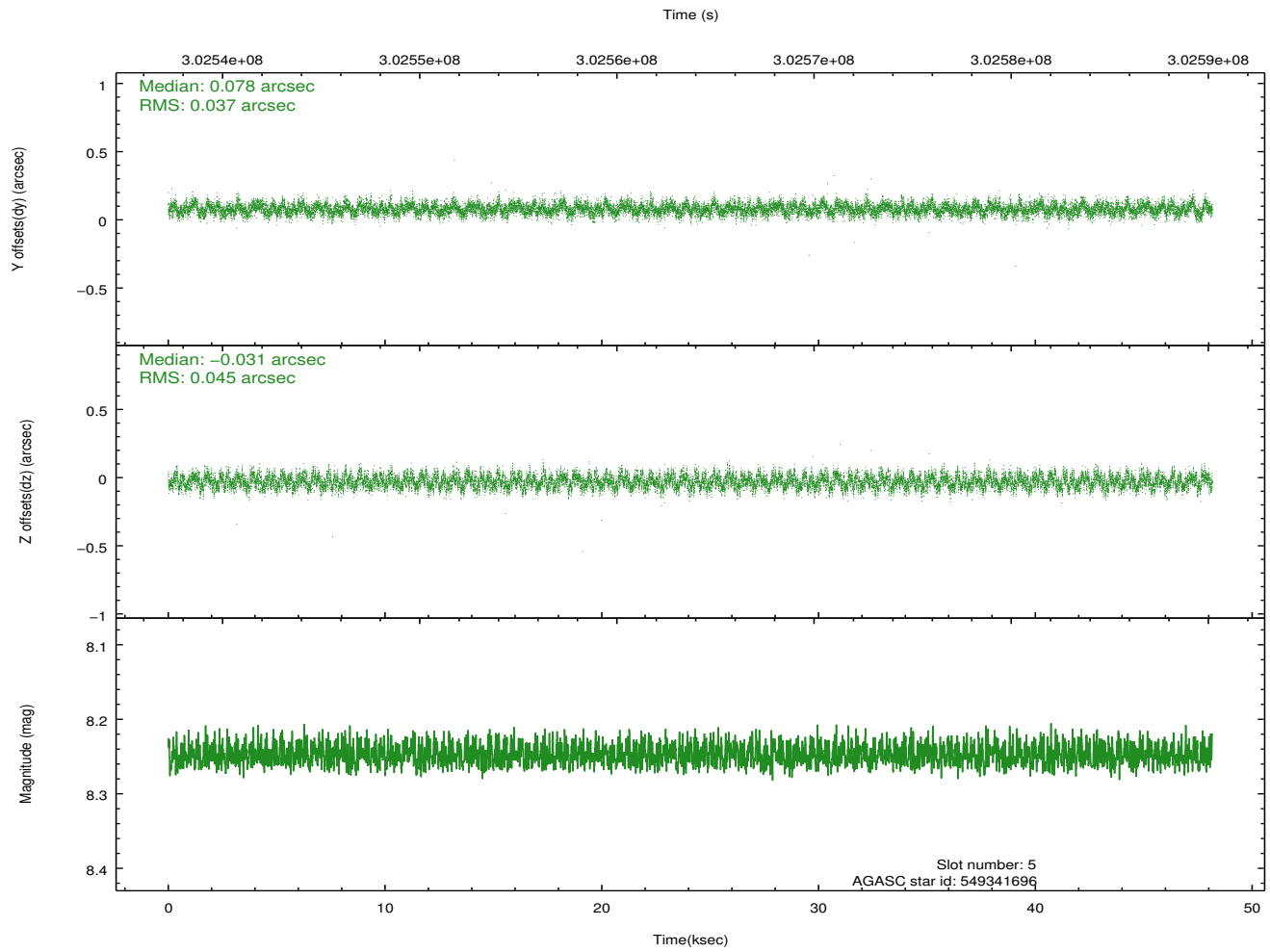
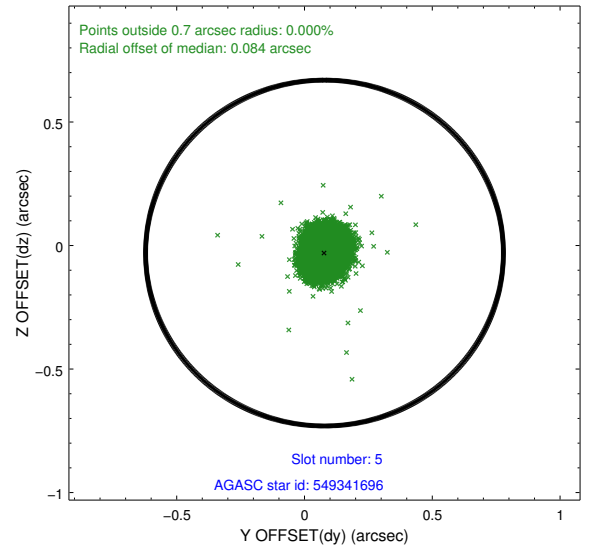
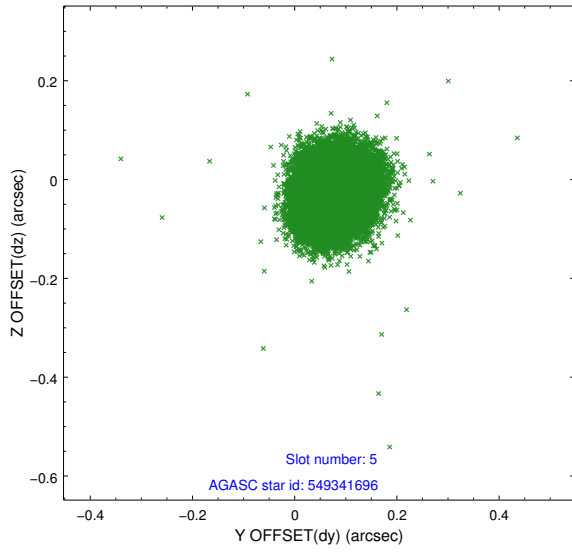
2.4.1 Slot 3



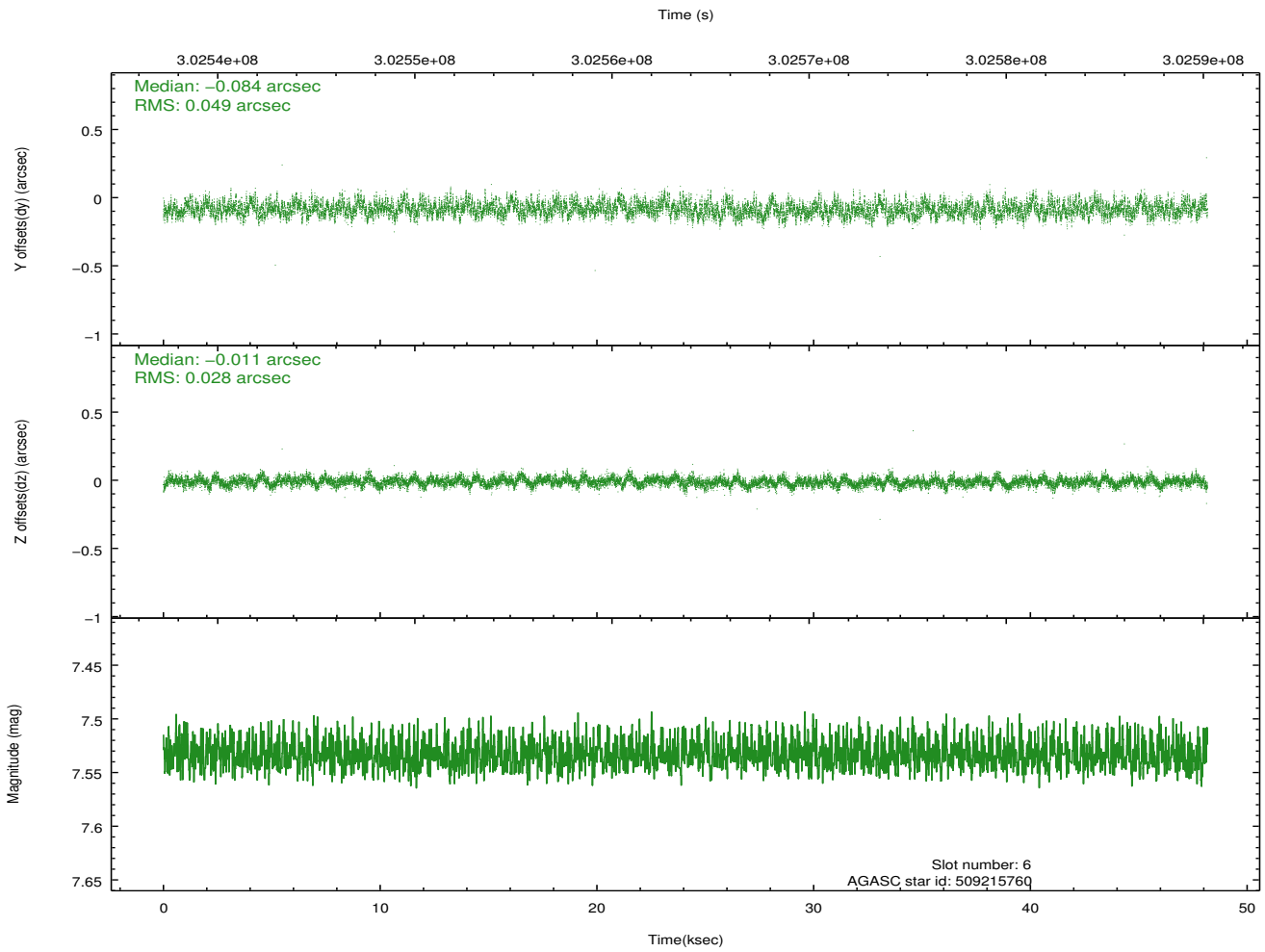
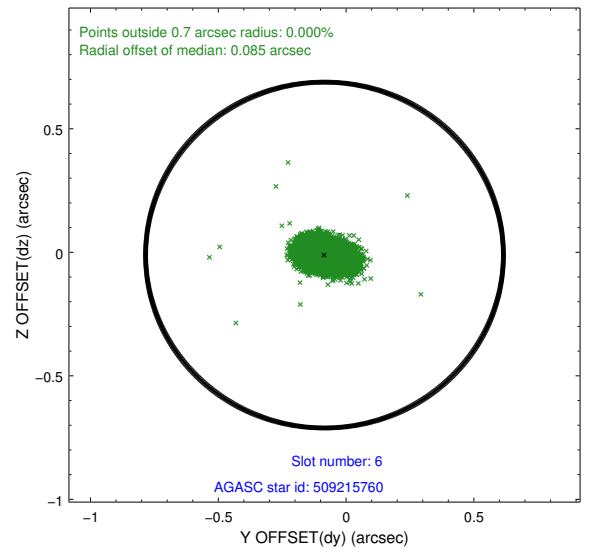
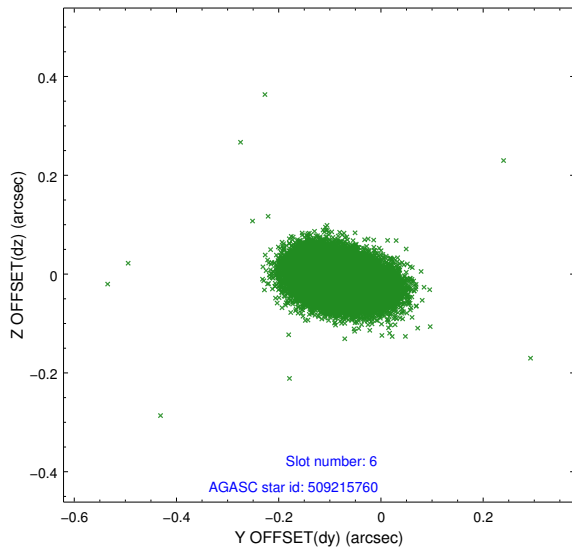
2.4.2 Slot 4



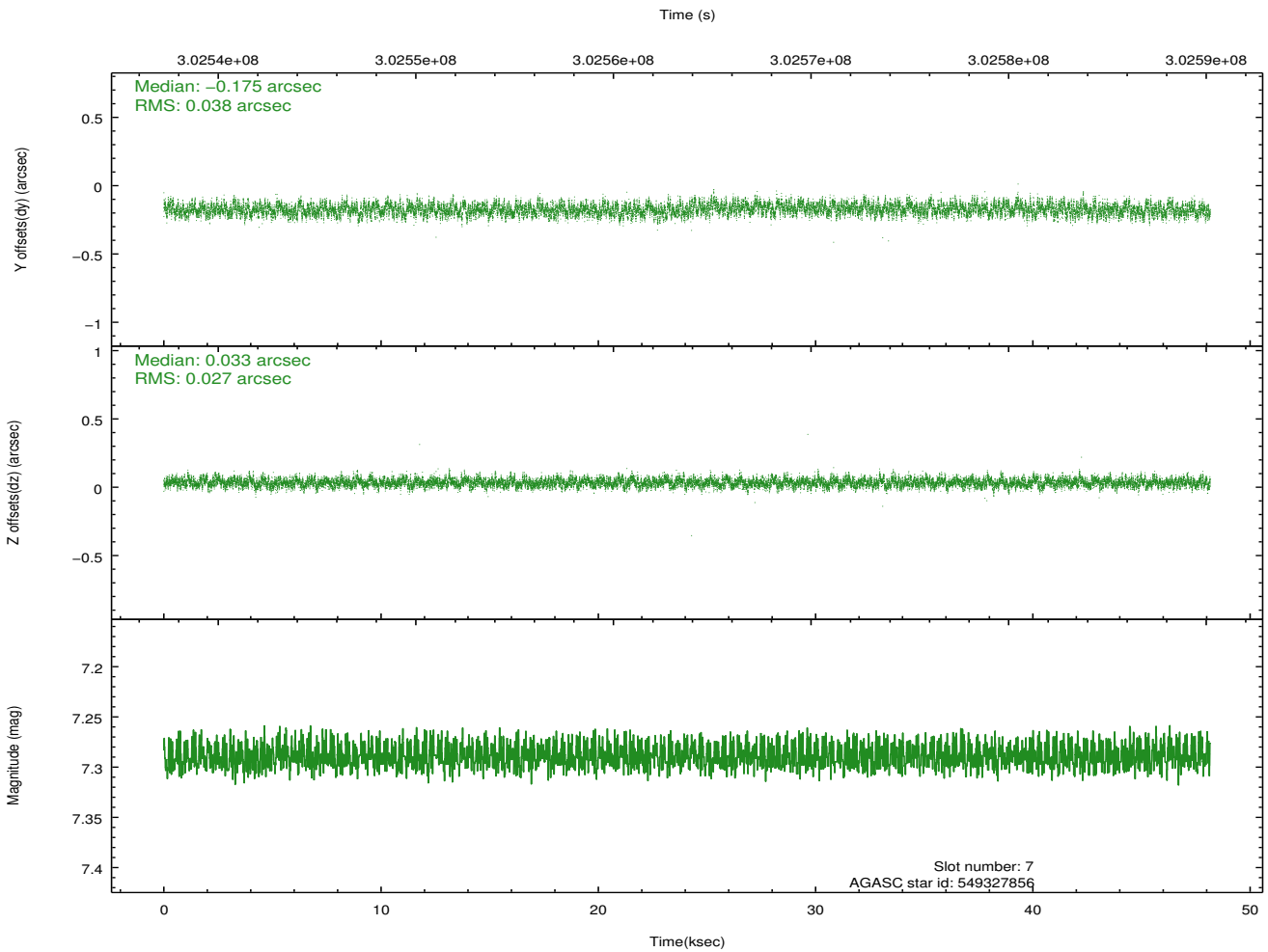
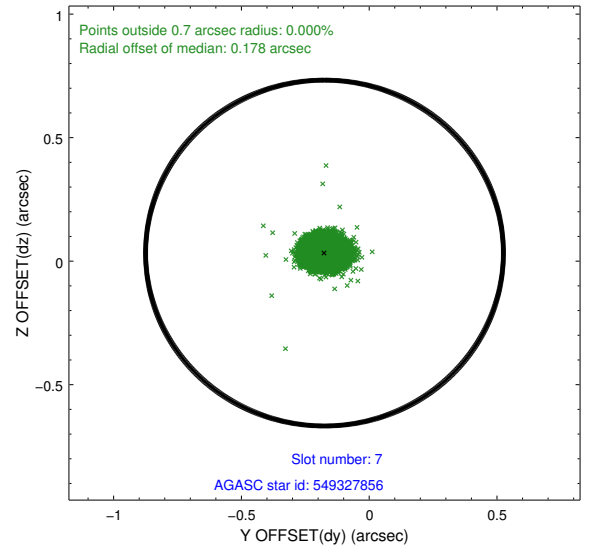
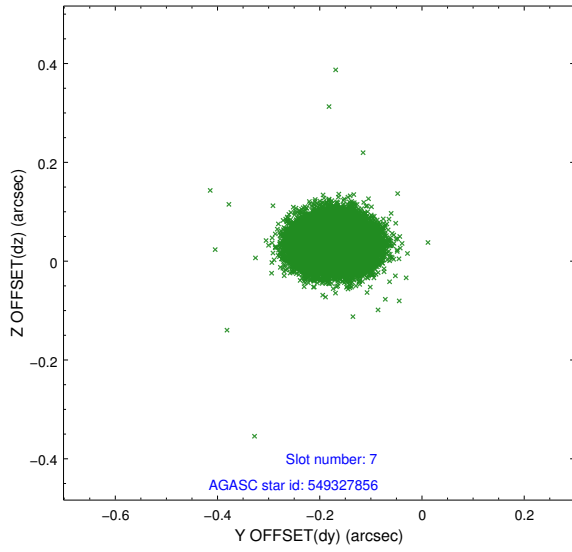
2.4.3 Slot 5



2.4.4 Slot 6

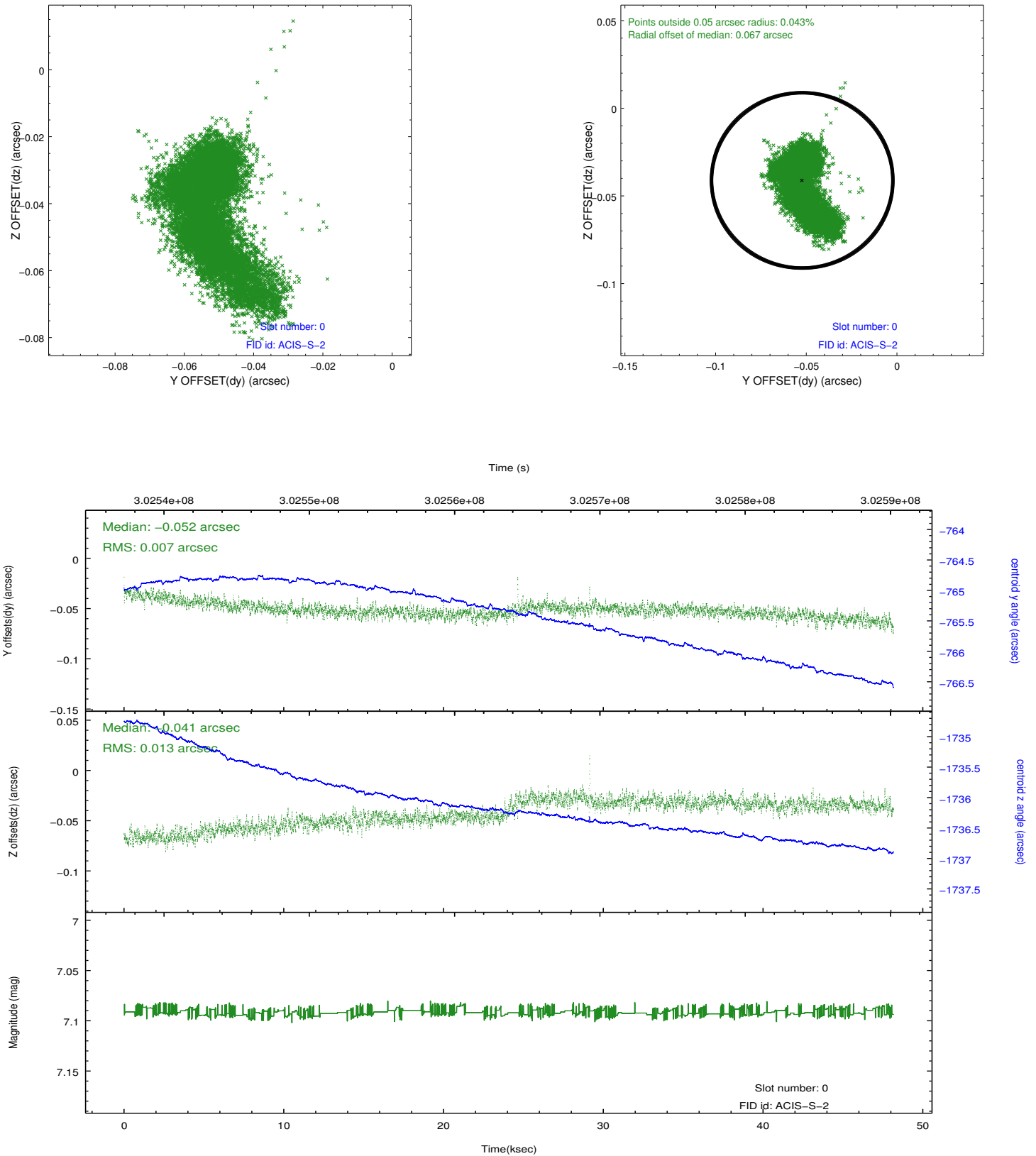


2.4.5 Slot 7

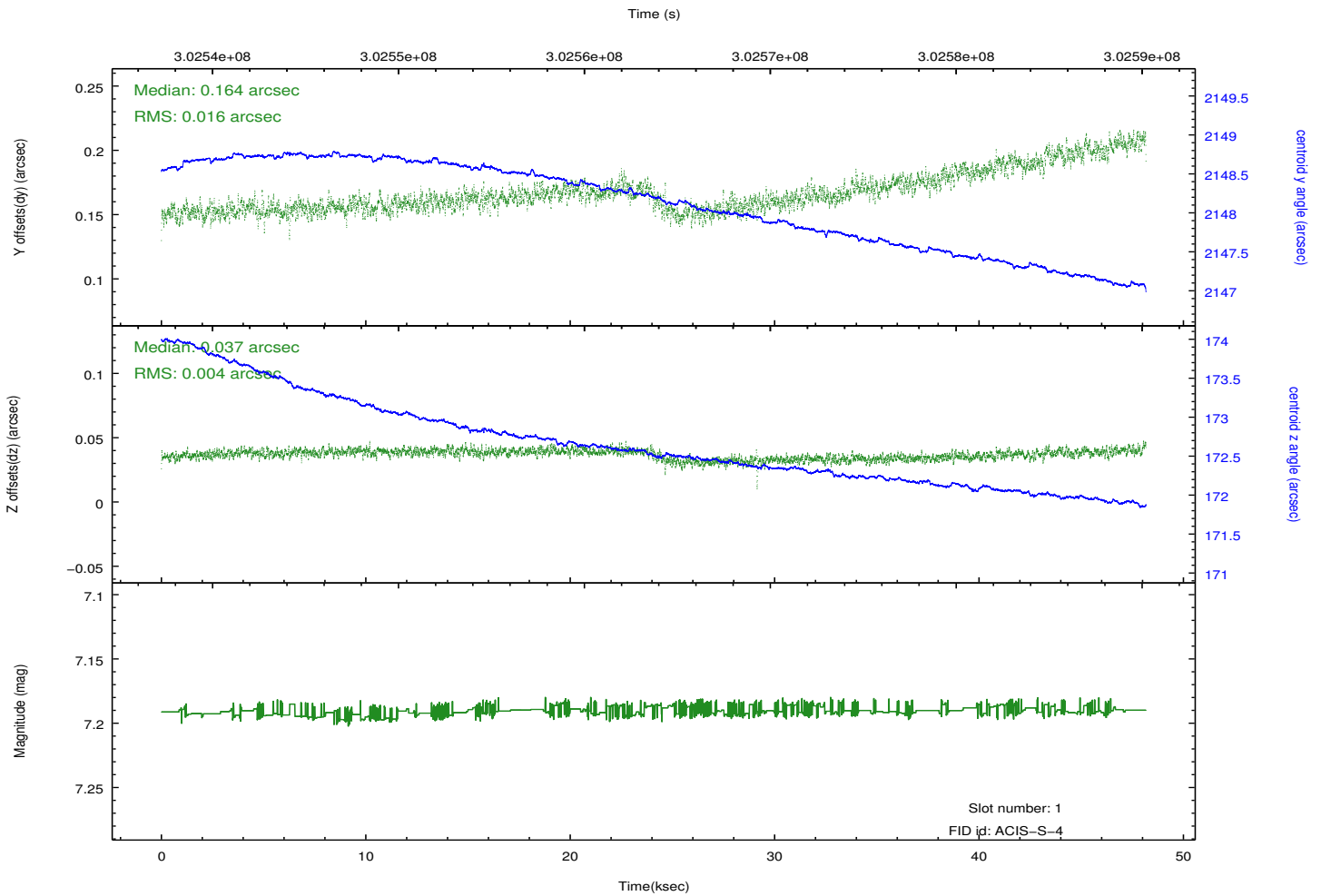
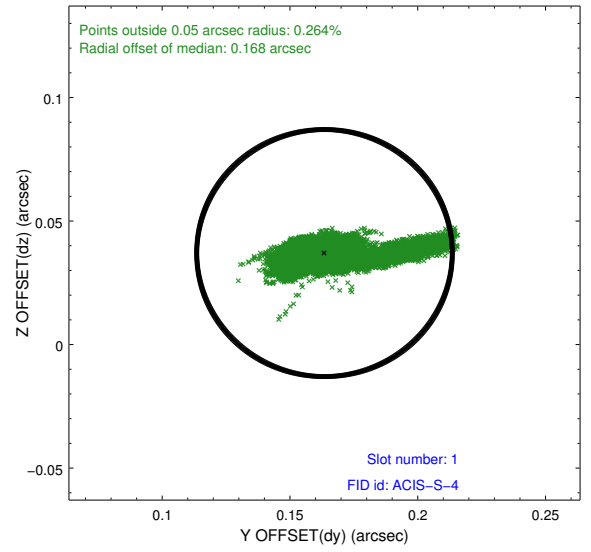
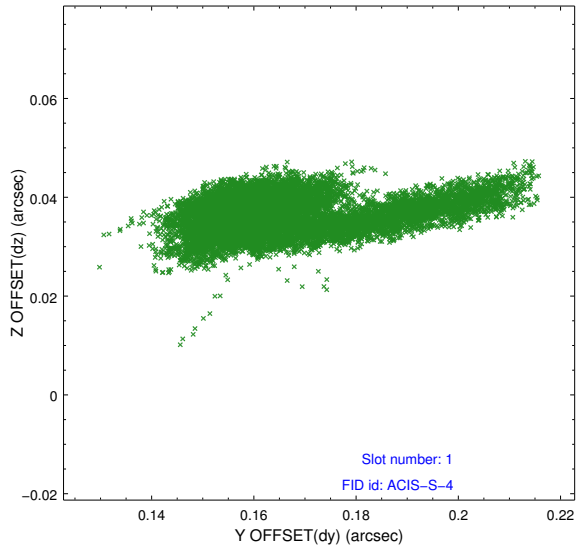


2.5 FID Slots

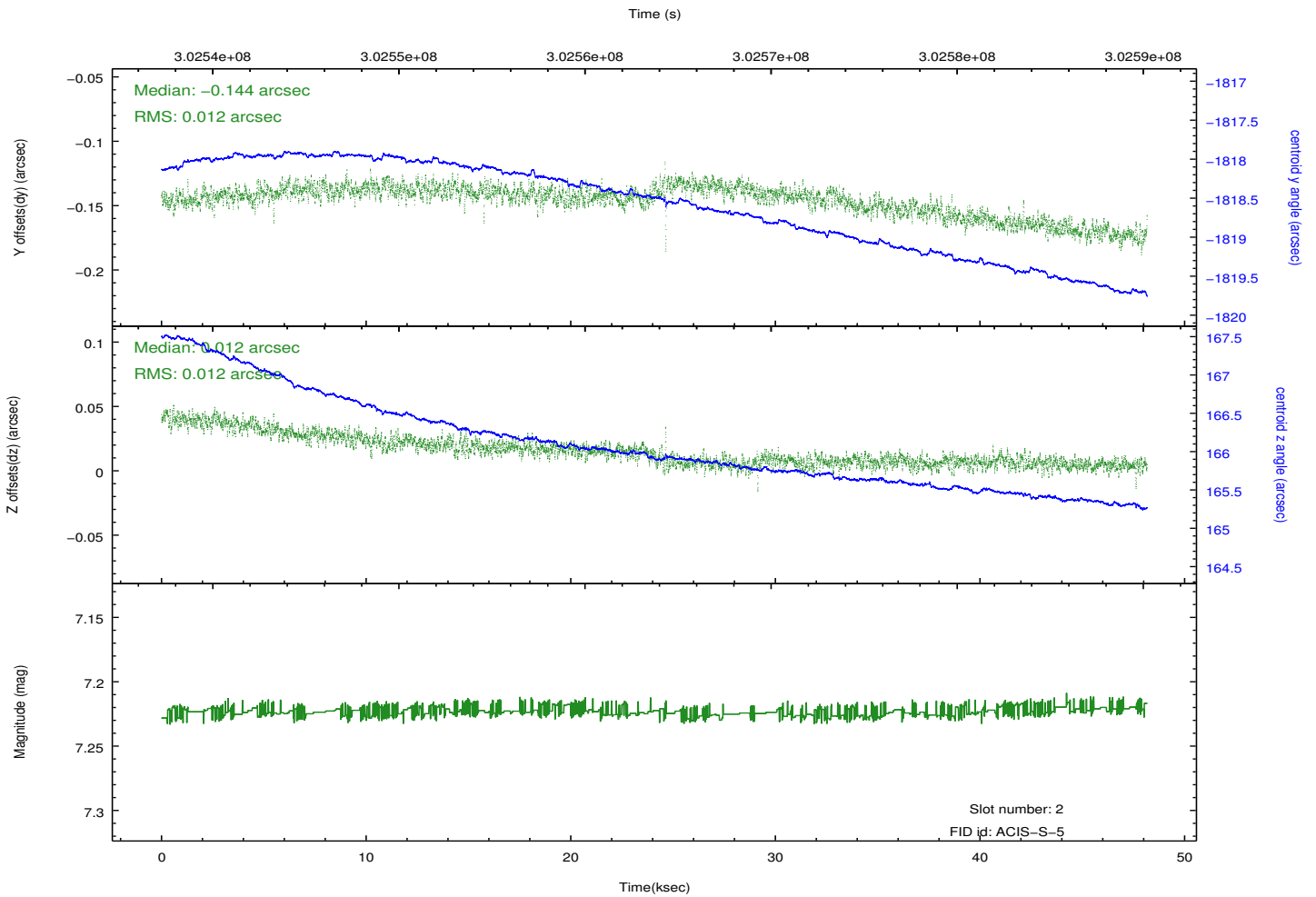
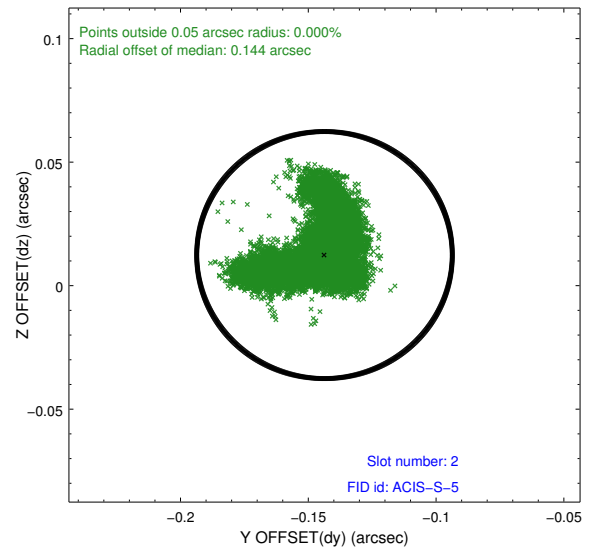
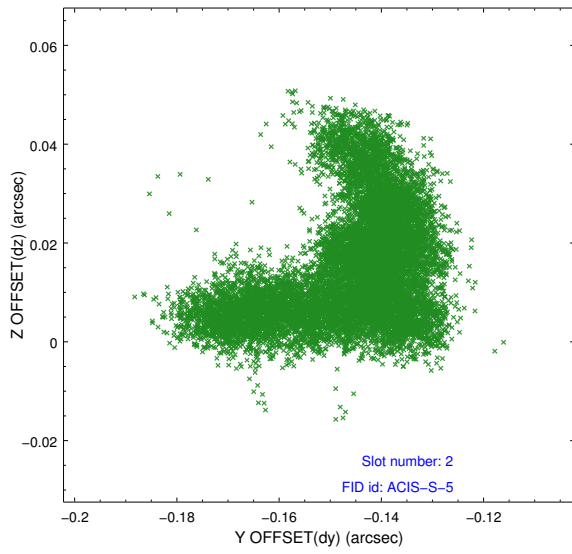
2.5.1 Slot 0



2.5.2 Slot 1



2.5.3 Slot 2



A Summary

A.1 Status

V&V Scientist	Jen Lauer
V&V Date (YYYY-MM-DD)	2012.05.01
V&V Edition	1
V&V Disposition and Status	OK
V&V Charge Time	48.1616003

A.2 Comments