

# V&V Reference Report

## L2 ASCDS Version : 8.4.5

Observation 872 - L2 Version 4  
Chandra X-Ray Center

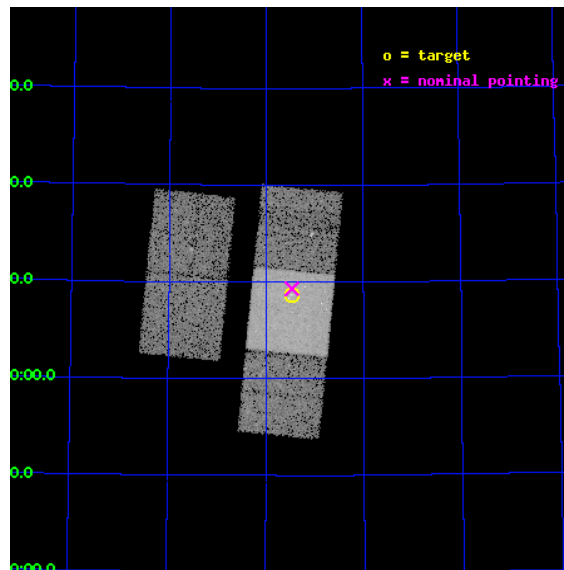
L2 Processing Date : Aug 24 2012

## Contents

<b>1</b>	<b>Front</b>	<b>2</b>
<b>2</b>	<b>OBI</b>	<b>3</b>
2.1	OBI . . . . .	3
2.1.1	Images . . . . .	3
2.1.2	Bias . . . . .	3
2.1.3	Parameters . . . . .	4
2.1.4	Events . . . . .	4
2.2	Compared Parameters . . . . .	5
2.3	Aspect . . . . .	6
2.4	Star Slots . . . . .	9
2.4.1	Slot 3 . . . . .	9
2.4.2	Slot 4 . . . . .	10
2.4.3	Slot 5 . . . . .	11
2.4.4	Slot 6 . . . . .	12
2.4.5	Slot 7 . . . . .	13
2.5	FID Slots . . . . .	14
2.5.1	Slot 0 . . . . .	14
2.5.2	Slot 1 . . . . .	15
2.5.3	Slot 2 . . . . .	16
<b>A</b>	<b>Summary</b>	<b>17</b>
A.1	Status . . . . .	17
A.2	Comments . . . . .	17

# 1 Front

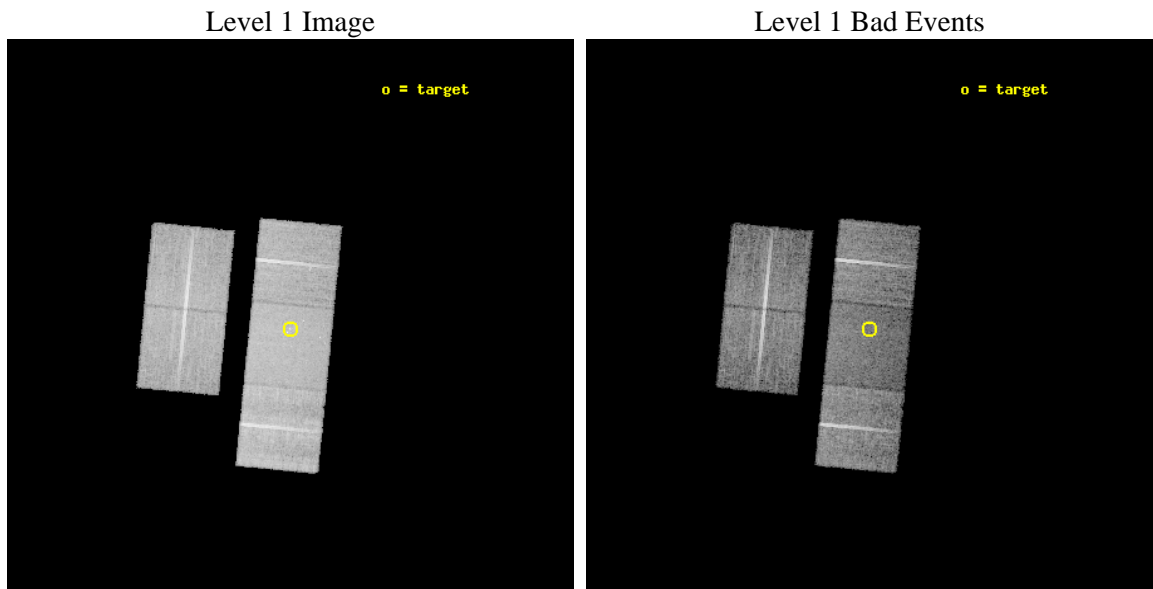
seq_num	700177	Sequence number
obs_id	872	Observation id
title	X-RAY OBSERVATION OF THE NEAREST LINERS AND SEYFERT GALAXIES	Propo
observer	DR PAULINA LIRA	Principal investigator
object	NGC 6503	Source name
dtcycle	0	&#160
cycle	P	events from which exps? Prim/Second/Both
ra_targ	267.364583	Observer's specified target RA [deg]
dec_targ	70.14475	Observer's specified target Dec [deg]
ra_nom	267.36723625119	Nominal RA [deg]
dec_nom	70.154778807818	Nominal Dec [deg]
roll_nom	95.629679348557	Nominal Roll [deg]
revision	4	Processing version of data
ontime	13356.780182883	Sum of GTIs [s]
livetime	13187.64858972	Livetime [s]
ontime2	13353.498192638	Sum of GTIs [s]
ontime3	13356.657062888	Sum of GTIs [s]
ontime6	13356.698102877	Sum of GTIs [s]
ontime7	13356.780182883	Sum of GTIs [s]
ontime8	13356.616022885	Sum of GTIs [s]
l2events	99875	Number of level 2 events



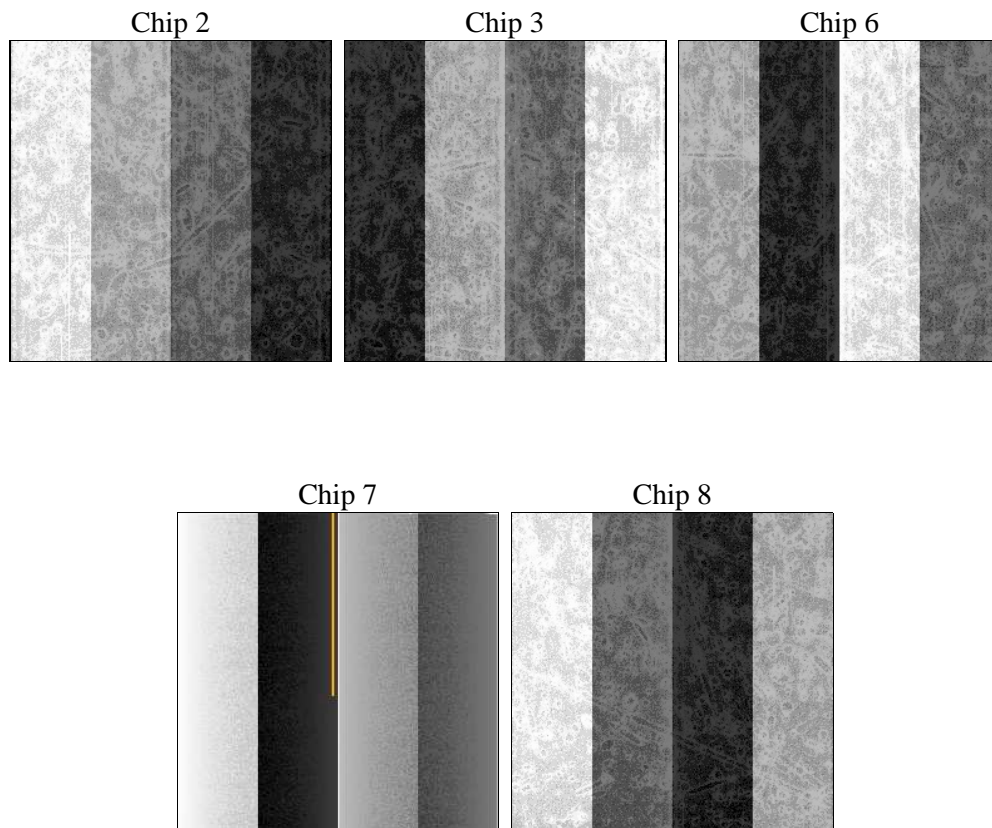
## 2 OBI

### 2.1 OBI

#### 2.1.1 Images



#### 2.1.2 Bias



### 2.1.3 Parameters

obi_num	0	Obi number	sched_exp_time	14000.000000	[s] Scheduled observation exposure time
ascdsver	8.4.5	Processing system revision	ontime	13356.780182883	Sum of GTIs [s]
caldbver	4.5.1.1	&#160	ontime2	13353.498192638	Sum of GTIs [s]
date	2012-08-24T14:27:45	Date and time of file creation	ontime3	13356.657062888	Sum of GTIs [s]
revision	4	Processing version of data	ontime6	13356.698102877	Sum of GTIs [s]
			ontime7	13356.780182883	Sum of GTIs [s]
			ontime8	13356.616022885	Sum of GTIs [s]
			l1events	561689	Number of level 1 events

### 2.1.4 Events

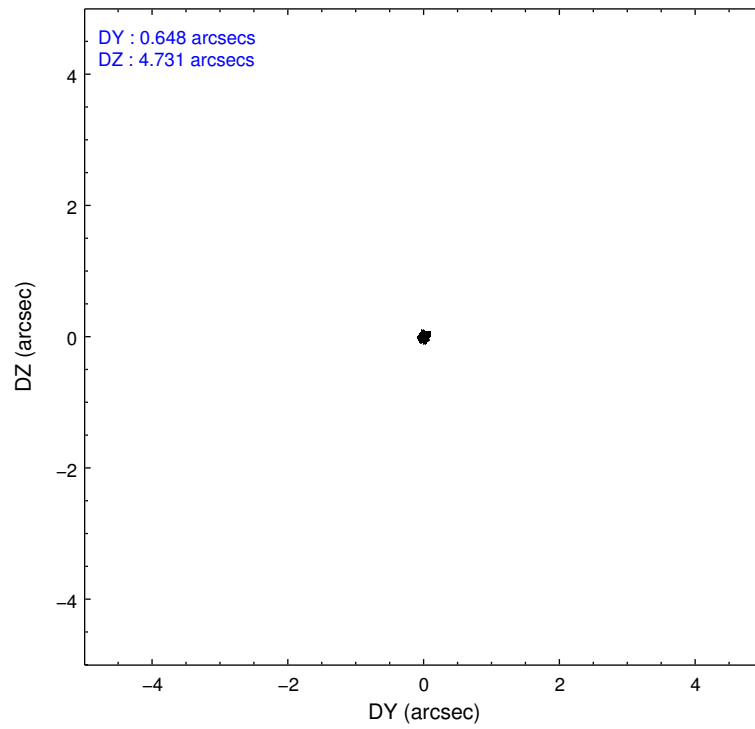
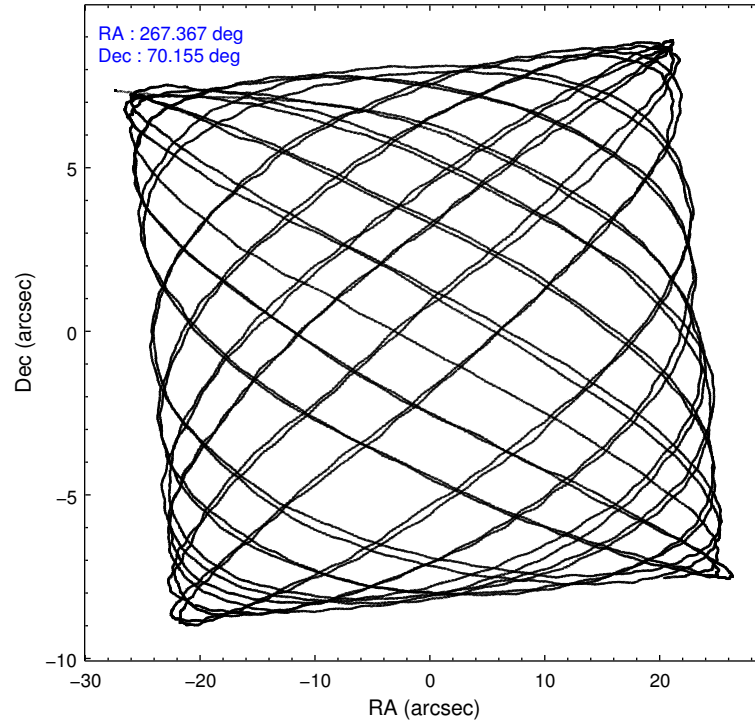
	ccd 2	ccd 3	ccd 6	ccd 7	ccd 8
level 1 events	101062	98601	102320	123157	136549
rejected events	89198	87411	90210	63995	98725
rejected %	88%	88%	88%	51%	72%

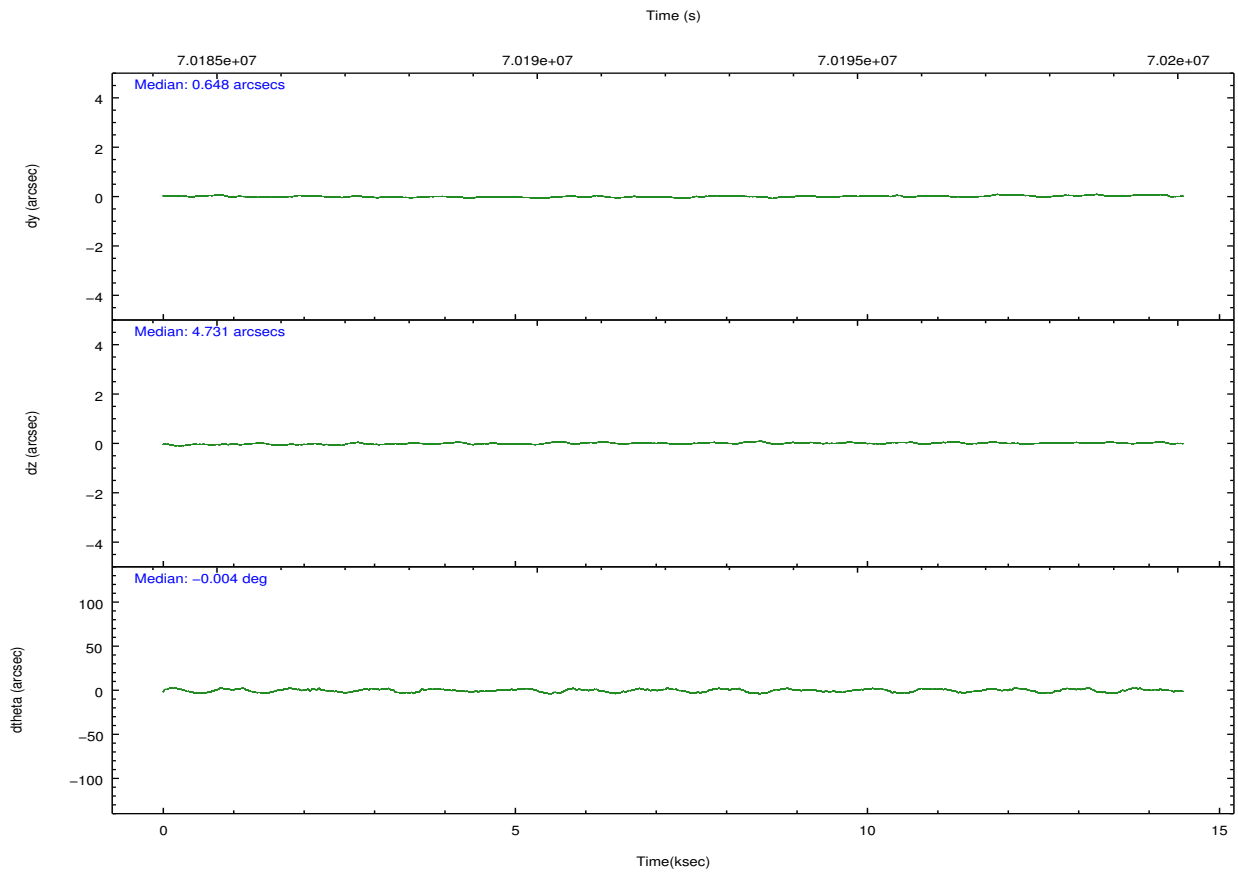
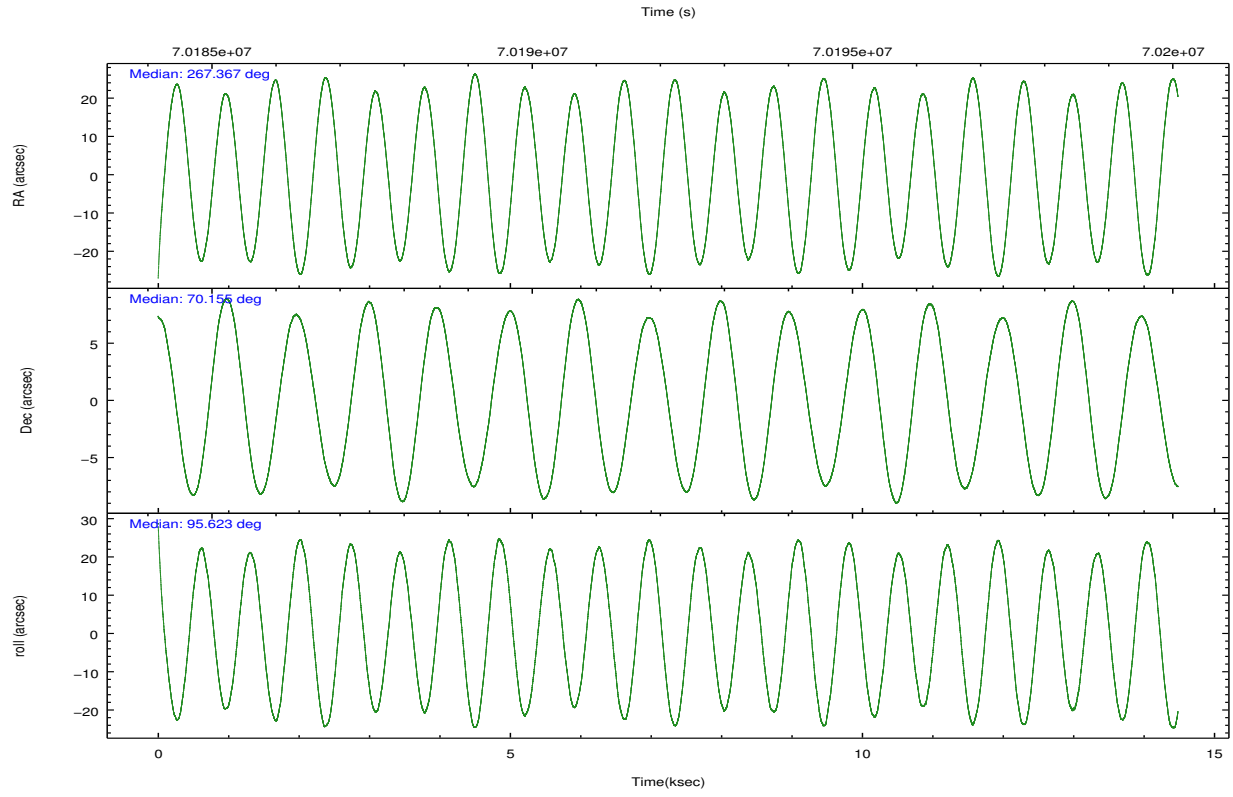
	ccd 2	ccd 3	ccd 6	ccd 7	ccd 8
grade 0 events	5371	4806	5349	6624	12739
	5%	4%	5%	5%	9%
grade 1 events	39	45	41	104	100
	0%	0%	0%	0%	0%
grade 2 events	2533	2328	2529	11644	6738
	2%	2%	2%	9%	4%
grade 3 events	987	1054	1066	5393	5296
	0%	1%	1%	4%	3%
grade 4 events	1000	992	1091	5357	4842
	0%	1%	1%	4%	3%
grade 5 events	2953	3066	3530	10734	4581
	2%	3%	3%	8%	3%
grade 6 events	1980	2017	2081	30186	8214
	1%	2%	2%	24%	6%
grade 7 events	86199	84293	86633	53115	94039
	85%	85%	84%	43%	68%

## 2.2 Compared Parameters

Parameter	Planned	Actual	Parameter	Planned	Actual
Instrument	ACIS	ACIS	Obspar format version number	7	7
Detector	ACIS-23678	ACIS-23678	Obspar file type	PREDICTED	ACTUAL
Grating	NONE	NONE	Obspar update status	NONE	UPDATED
Data mode	FAINT	FAINT	Number of optional ACIS chips dropped	0	0
Observation mode	POINTING	POINTING	On-chip summing requested	N	N
[deg] Pointing RA	267.414359	267.3672362511873	Subarray requested	NONE	NONE
[deg] Pointing Dec	70.132467	70.15477880781815	Alternating exposures requested	N	N
[deg] Pointing Roll	95.428735	95.62967934855723	[s] Primary exposure time	0.000000	3.2
[mm] SIM focus pos	-0.684267	-0.6828225247311905			
[mm] SIM defocus	0	0.001444936568705701			
[mm] SIM translation stage pos	-190.132523	-190.1400660498719			
[mm] SIM translation stage offset	0	0.00754346686406393			
[s] Observation start time (MET)	70185360.184000	70184611.598391			
Observation start date	2000-03-23T07:54:56	2000-03-23T07:43:31			
[s] Observation end time (MET)	70199360.184000	70199995.823954			
Observation end date	2000-03-23T11:48:16	2000-03-23T11:59:55			
Read mode	TIMED	TIMED			

## 2.3 Aspect



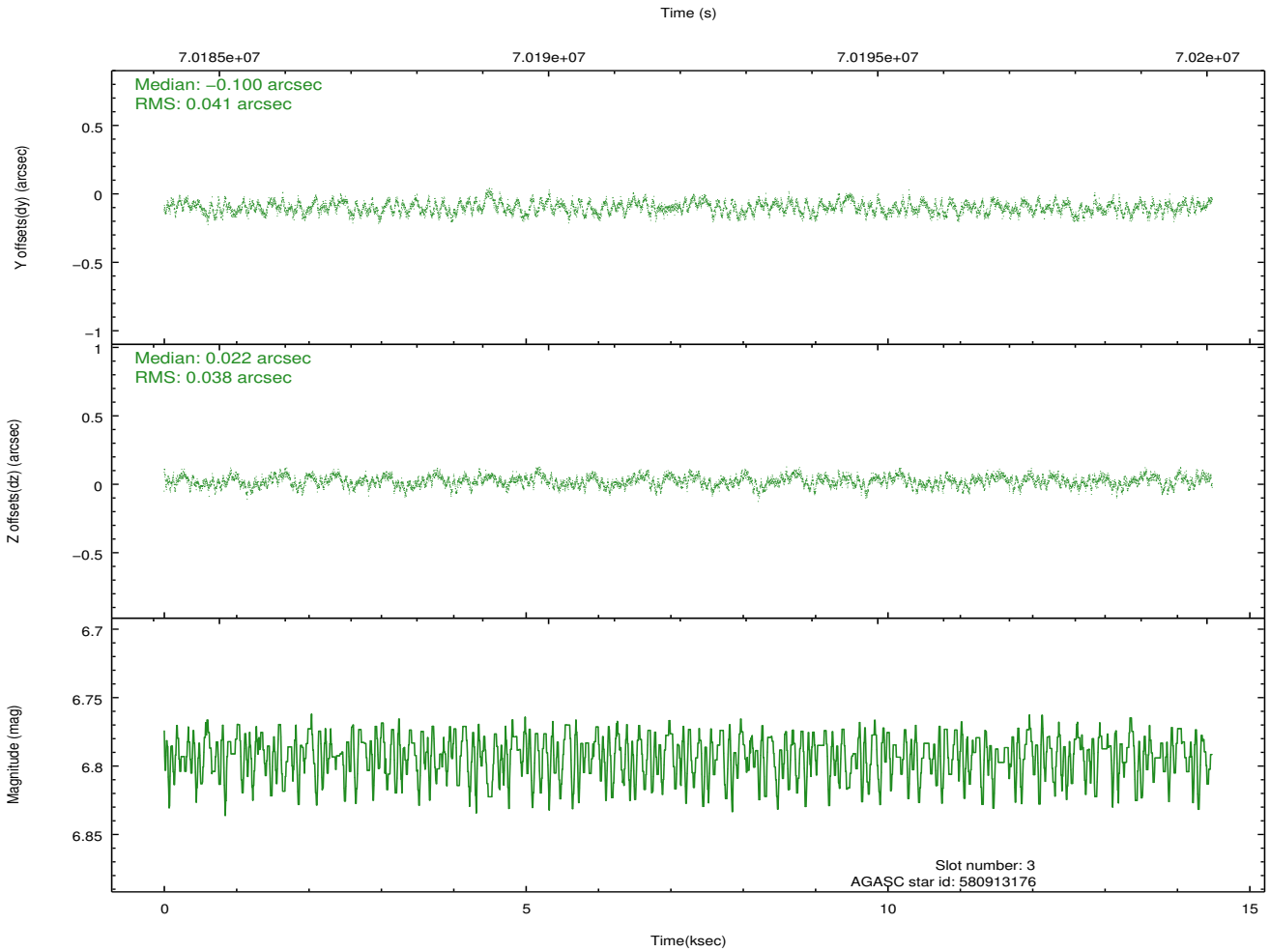
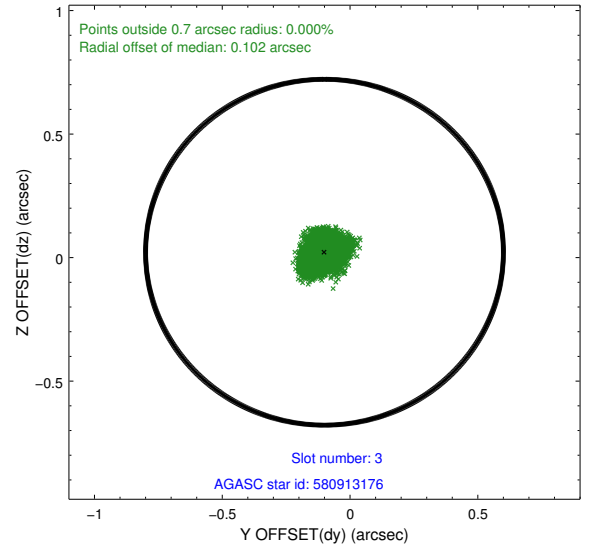
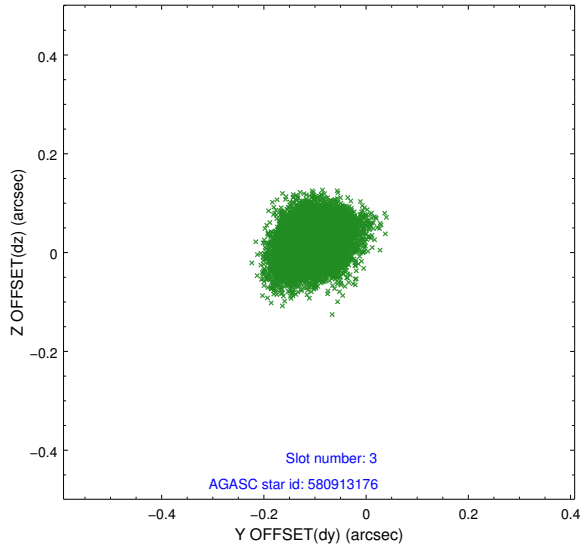


### Slot Statistics

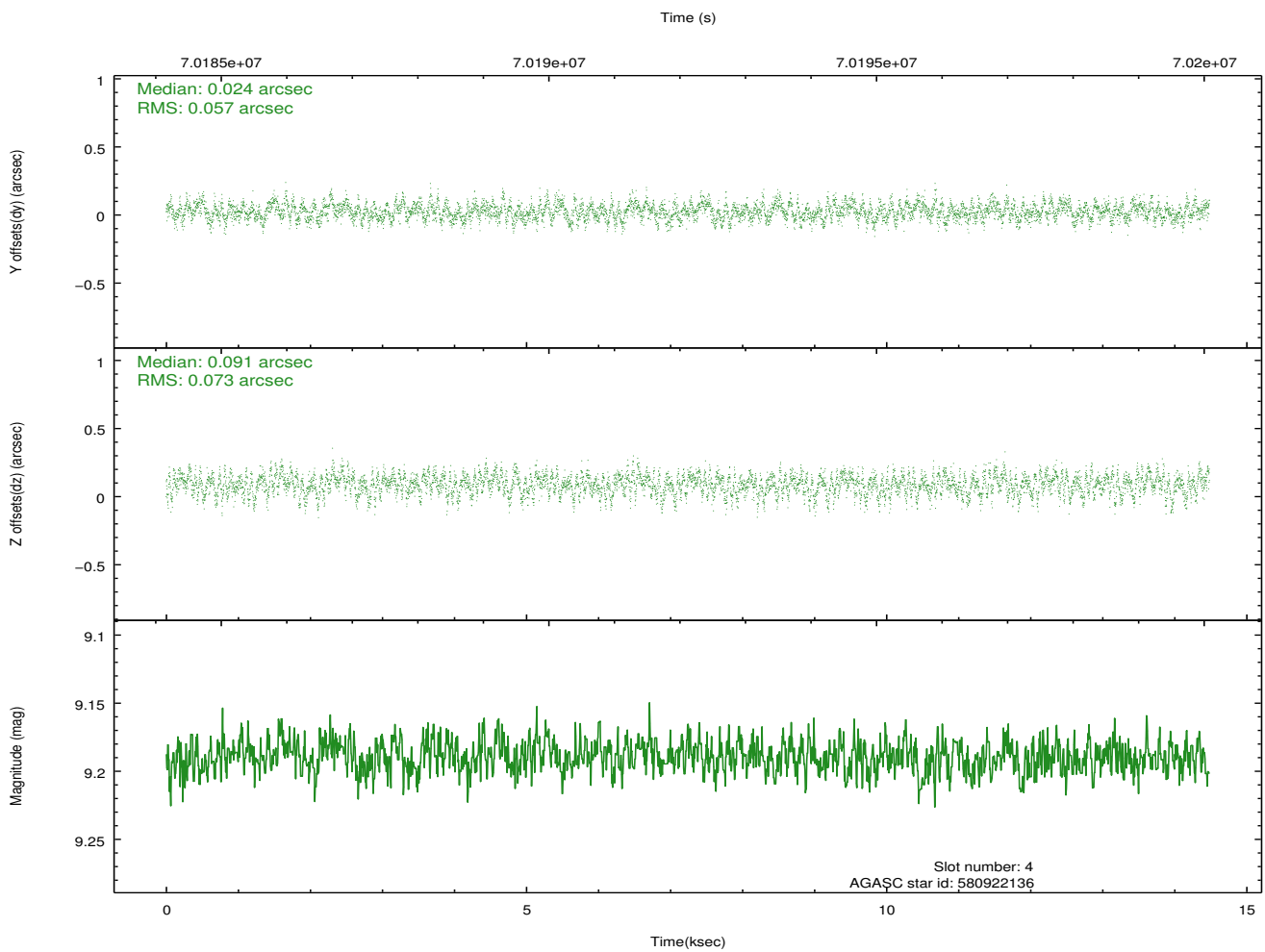
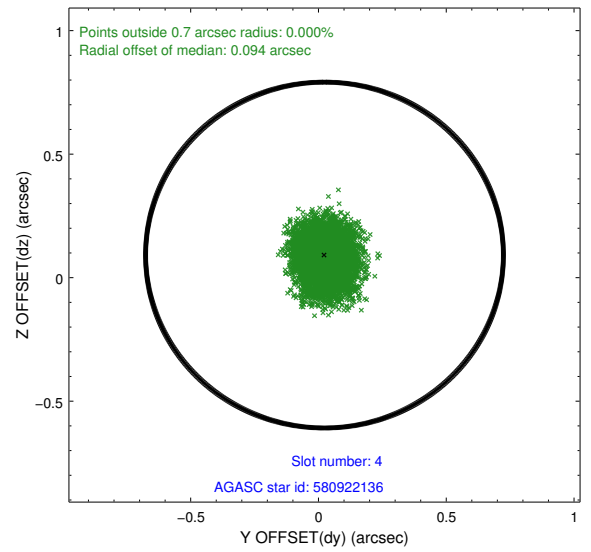
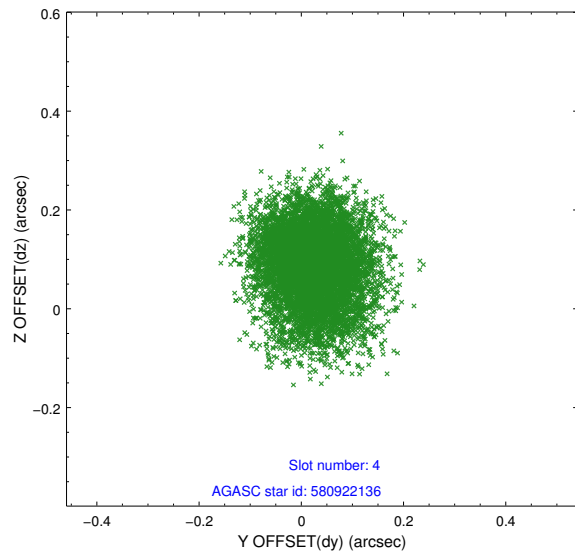
slot	status	id	mag	n_pts	med_dy	med_dz	dr1	dr2	ra	dec	mean_y	mean_z
0	FID	ACIS-S-2	7.08	3533	-0.048	-0.008	0.064	0.080	0.000000	0.000000	-753.27	-1725.84
1	FID	ACIS-S-4	7.21	3532	0.027	0.023	0.029	0.047	0.000000	0.000000	2159.93	182.33
2	FID	ACIS-S-5	7.23	3533	-0.015	-0.009	0.038	0.059	0.000000	0.000000	-1805.68	176.36
3	GUIDE	580913176	6.79	7066	-0.100	0.022	0.061	0.095	268.799832	69.615563	-1997.93	-1555.74
4	GUIDE	580922136	9.19	7064	0.024	0.091	0.098	0.159	269.204285	70.081301	-359.70	-2171.20
5	GUIDE	580916112	9.20	7056	0.066	0.080	0.071	0.113	268.306384	70.467709	1107.13	-1184.11
6	GUIDE	580918096	9.69	7061	0.020	-0.007	0.102	0.162	265.362344	70.464391	1463.89	2341.54
7	GUIDE	580920256	9.88	7058	-0.011	-0.179	0.127	0.206	265.517801	69.996519	-230.96	2367.46

## 2.4 Star Slots

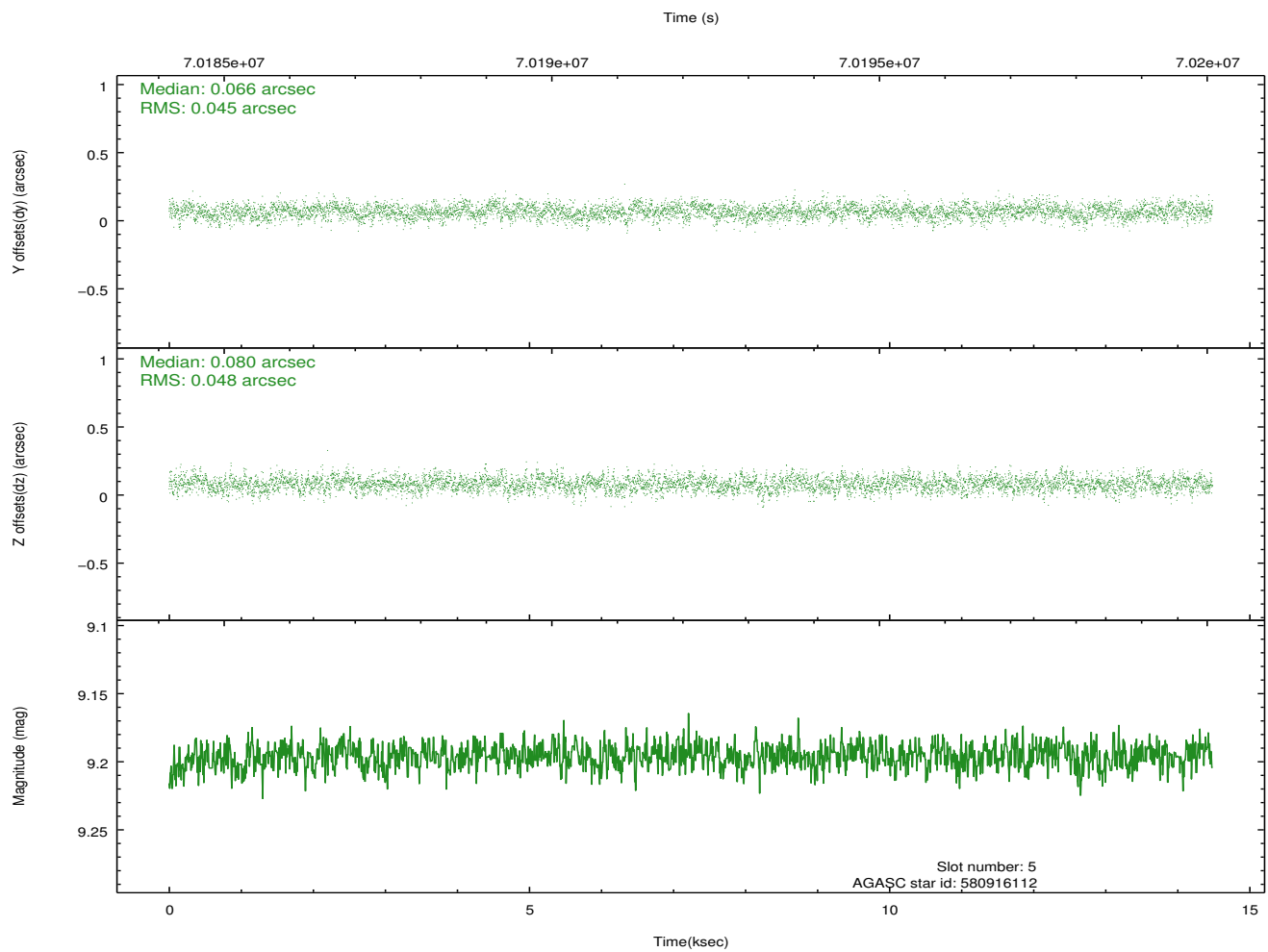
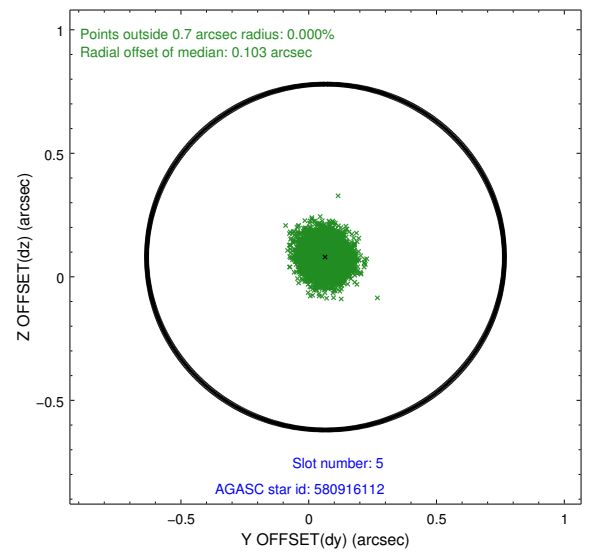
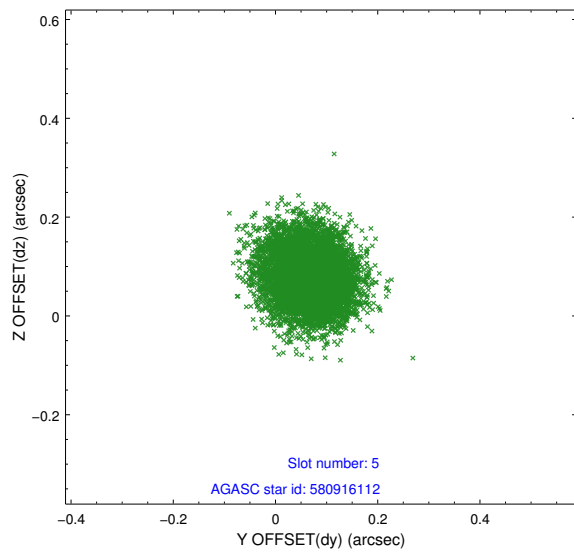
### 2.4.1 Slot 3



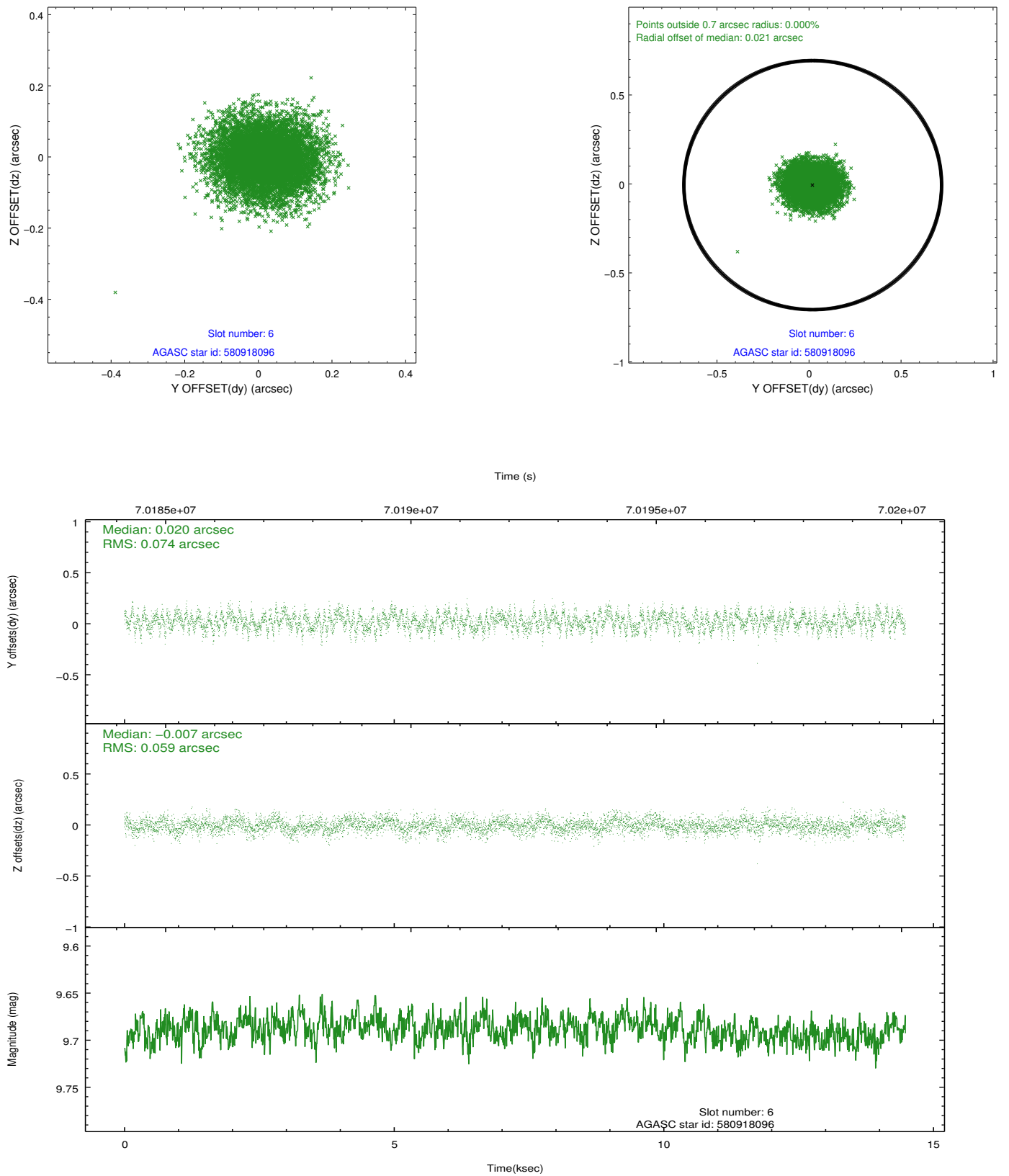
## 2.4.2 Slot 4



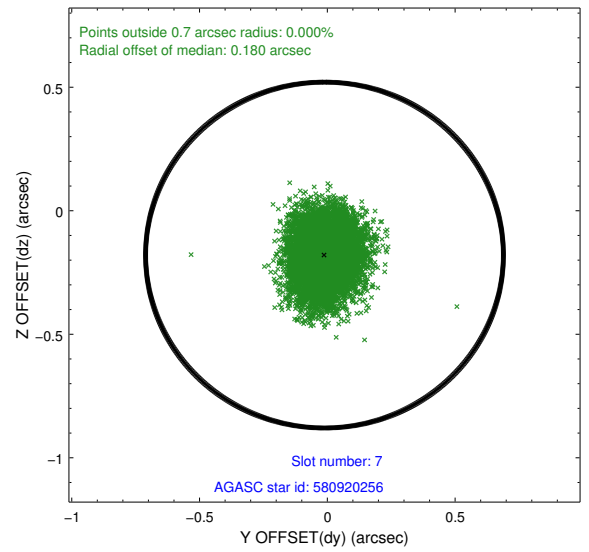
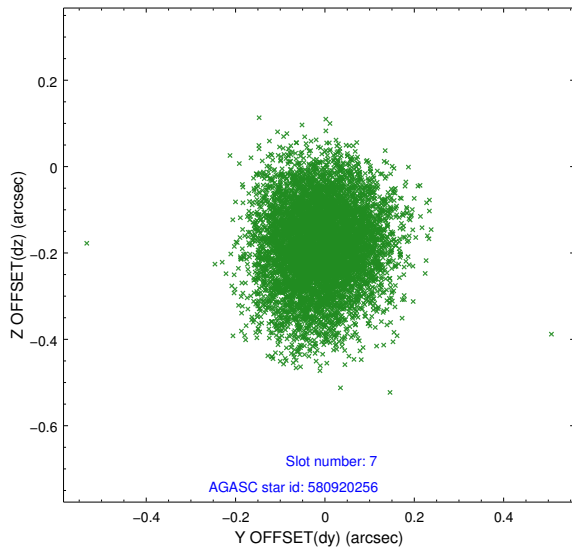
### 2.4.3 Slot 5



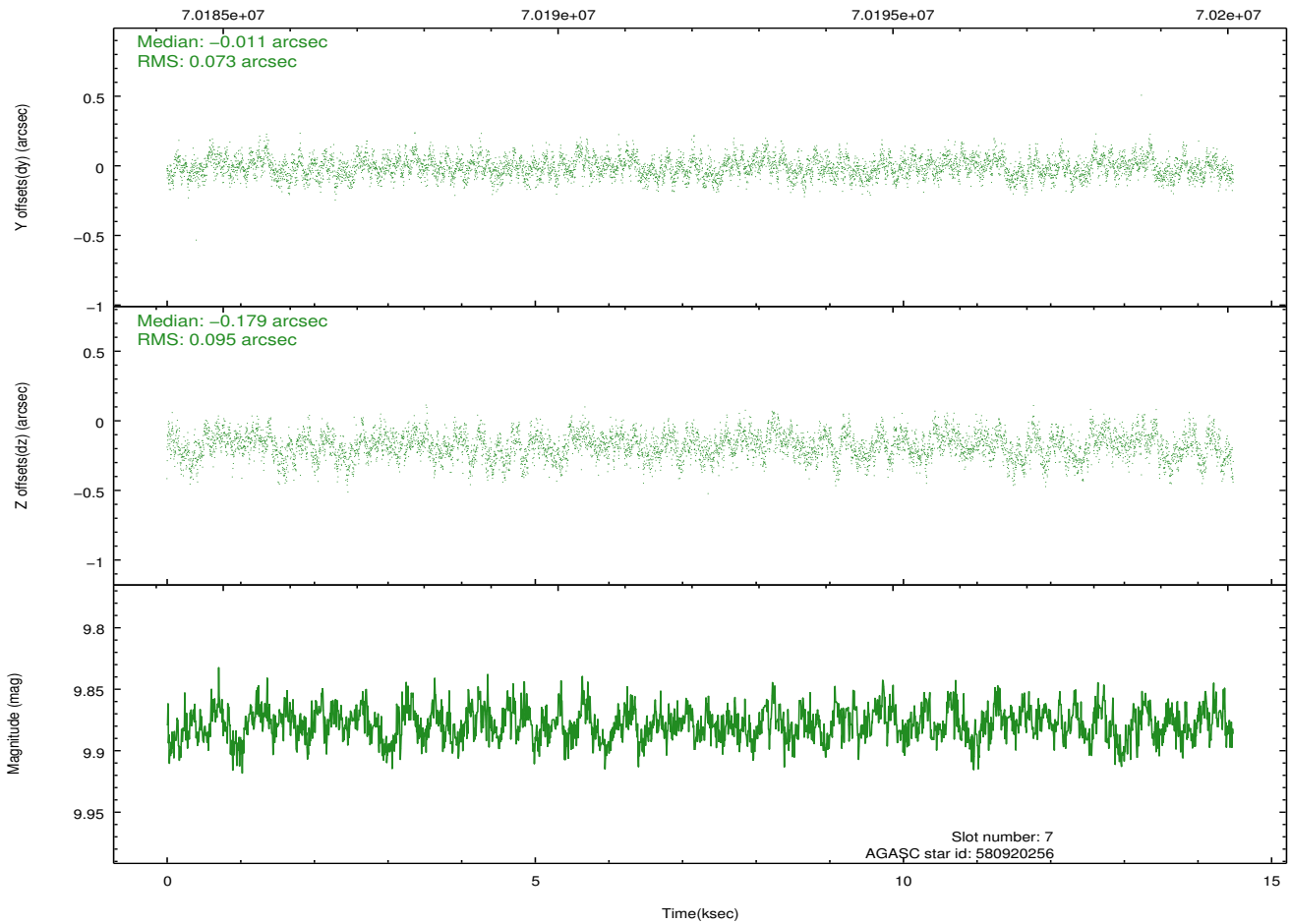
## 2.4.4 Slot 6



## 2.4.5 Slot 7

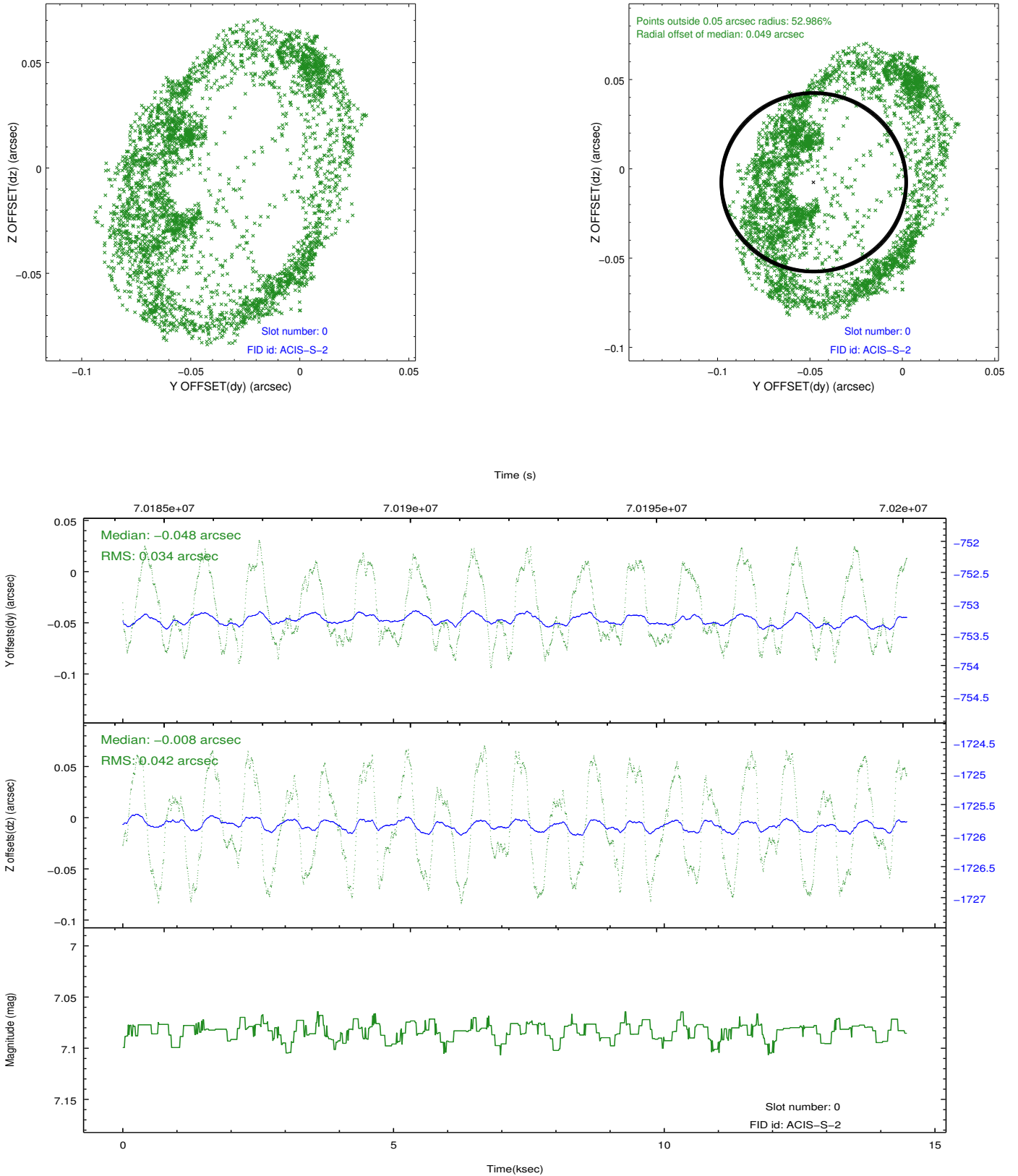


Time (s)

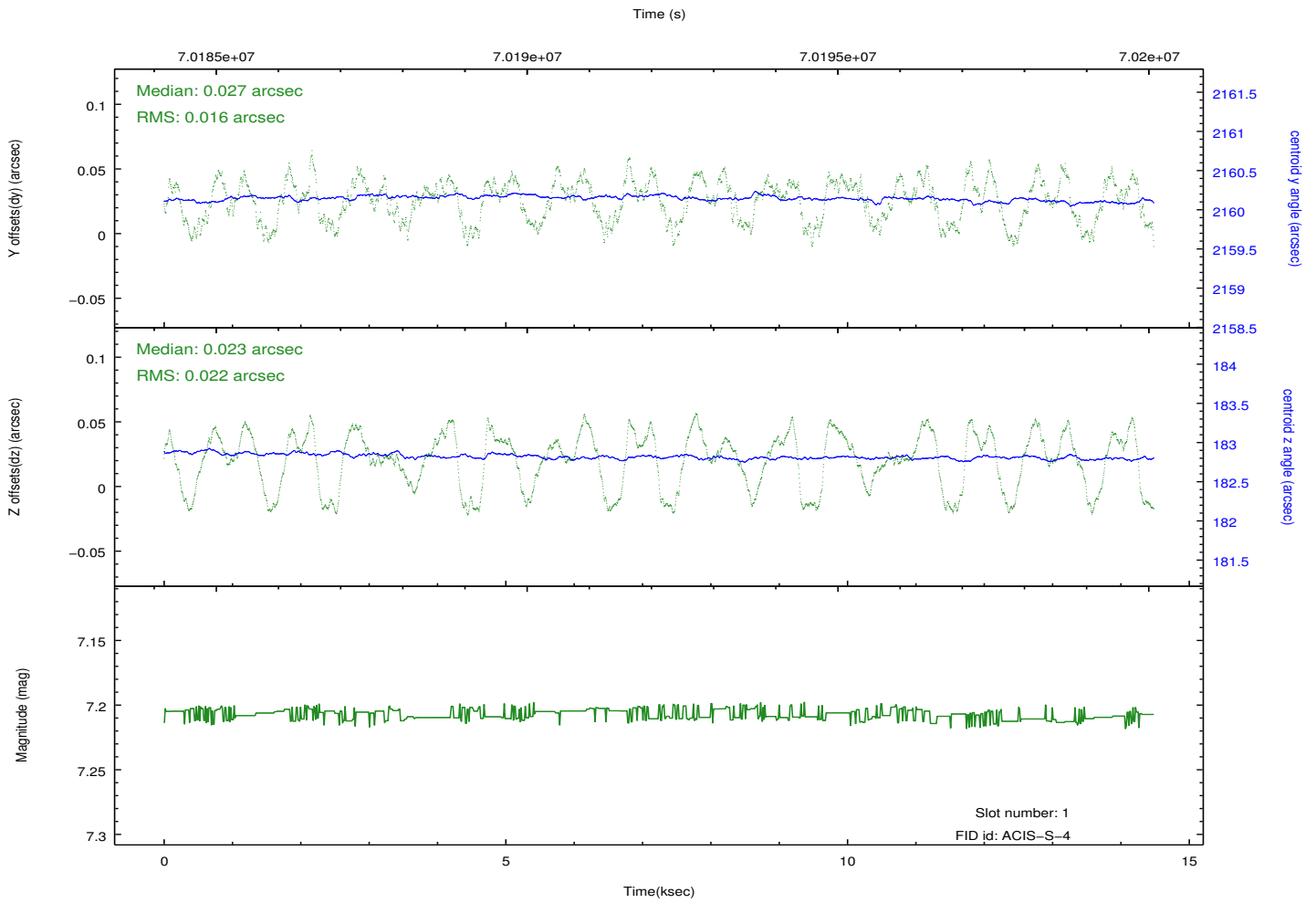
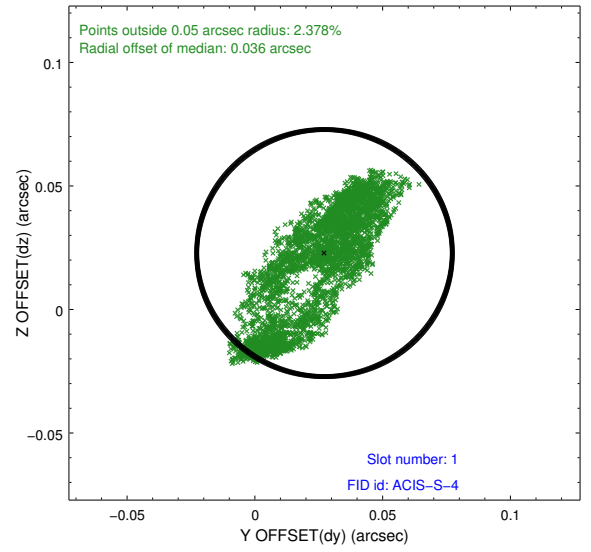
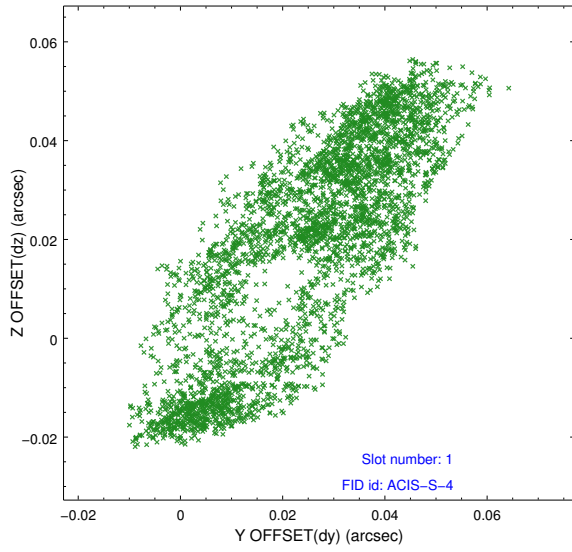


## 2.5 FID Slots

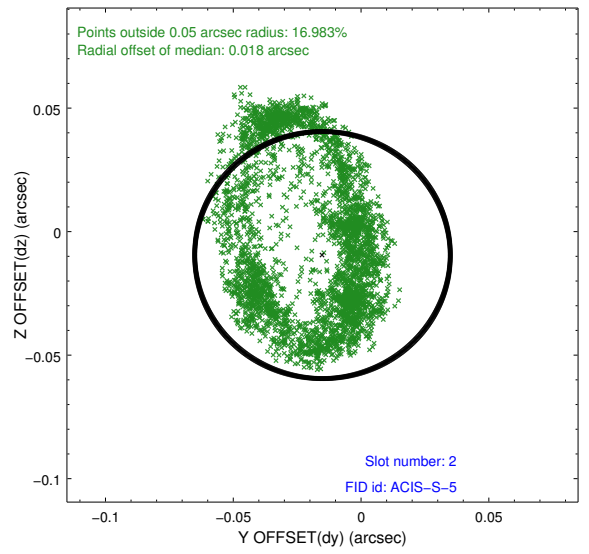
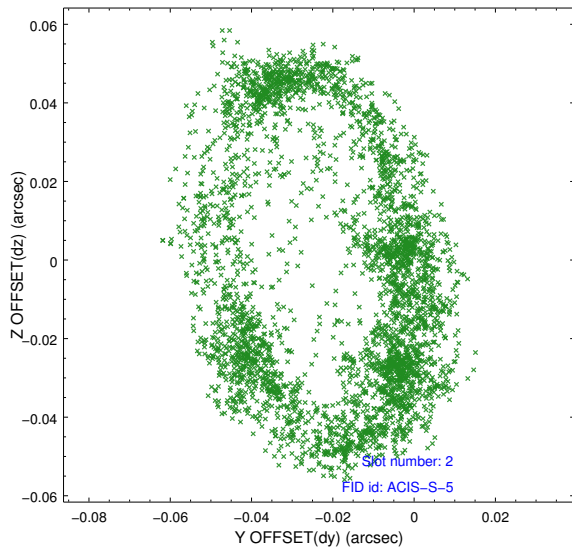
### 2.5.1 Slot 0



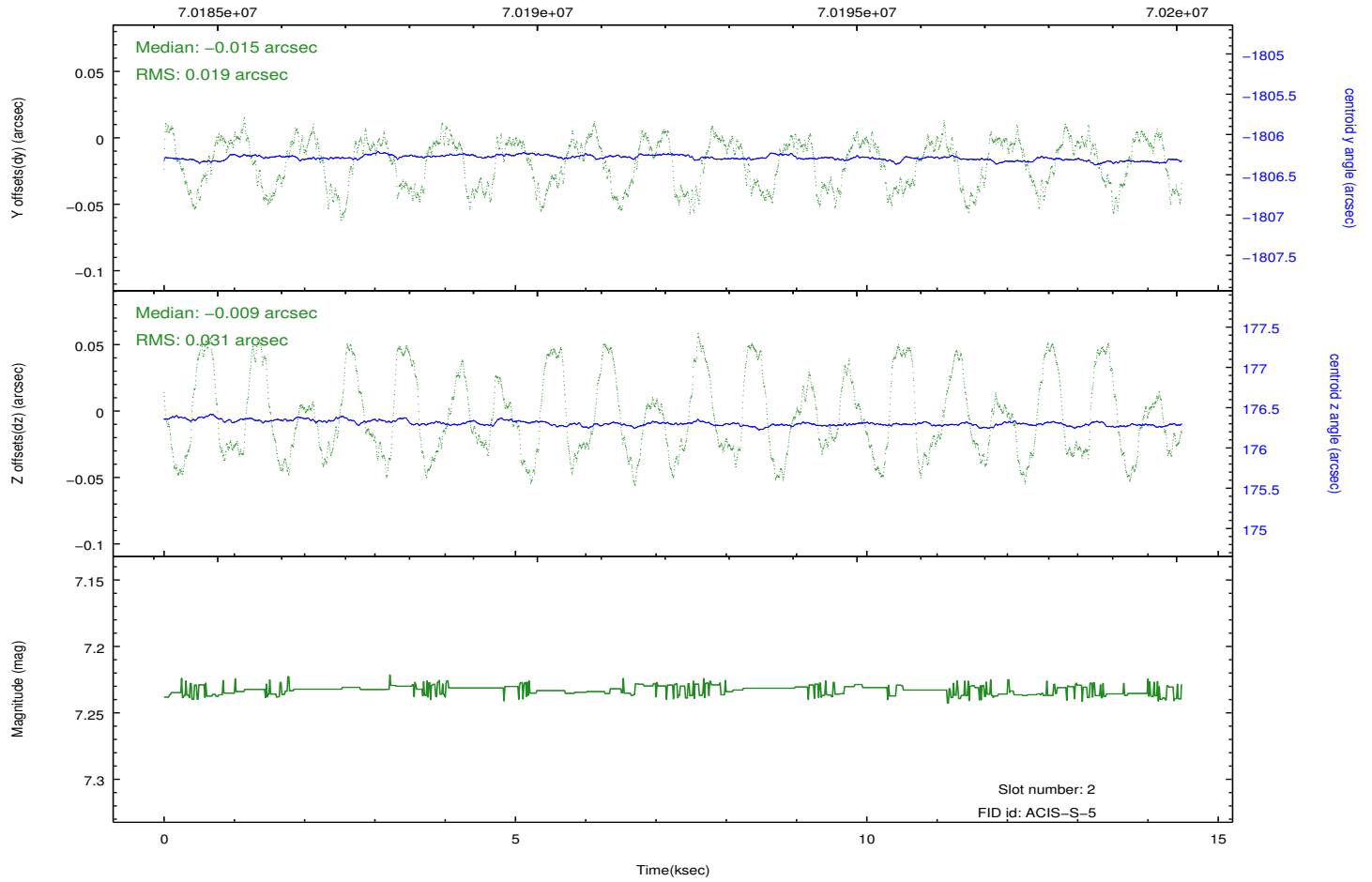
## 2.5.2 Slot 1



### 2.5.3 Slot 2



Time (s)



# A Summary

## A.1 Status

V&V Scientist	Jen Lauer
V&V Date (YYYY-MM-DD)	2012.08.27
V&V Edition	1
V&V Disposition and Status	OK
V&V Charge Time	13.359

## A.2 Comments