

# V&V Reference Report

## L2 ASCDS Version : 8.4.4

Observation 8932 - L2 Version 2  
Chandra X-Ray Center

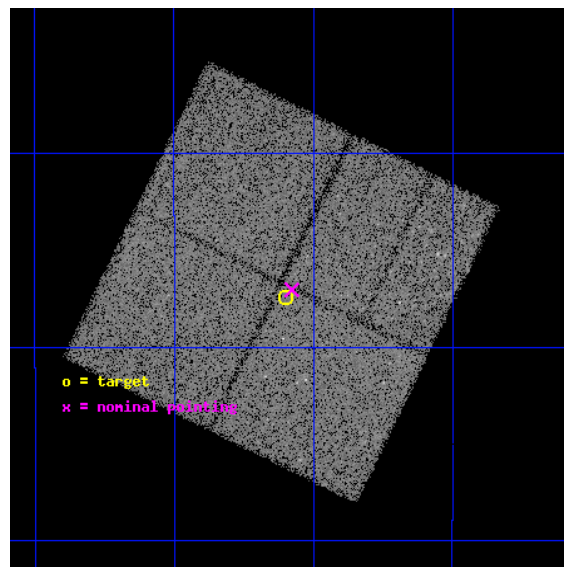
L2 Processing Date : May 16 2012

## Contents

<b>1</b>	<b>Front</b>	<b>2</b>
<b>2</b>	<b>OBI</b>	<b>3</b>
2.1	OBI . . . . .	3
2.1.1	Images . . . . .	3
2.1.2	Bias . . . . .	3
2.1.3	Parameters . . . . .	4
2.1.4	Events . . . . .	4
2.2	Compared Parameters . . . . .	5
2.3	Aspect . . . . .	6
2.4	Star Slots . . . . .	9
2.4.1	Slot 3 . . . . .	9
2.4.2	Slot 4 . . . . .	10
2.4.3	Slot 5 . . . . .	11
2.4.4	Slot 6 . . . . .	12
2.4.5	Slot 7 . . . . .	13
2.5	FID Slots . . . . .	14
2.5.1	Slot 0 . . . . .	14
2.5.2	Slot 1 . . . . .	15
2.5.3	Slot 2 . . . . .	16
<b>A</b>	<b>Summary</b>	<b>17</b>
A.1	Status . . . . .	17
A.2	Comments . . . . .	17

# 1 Front

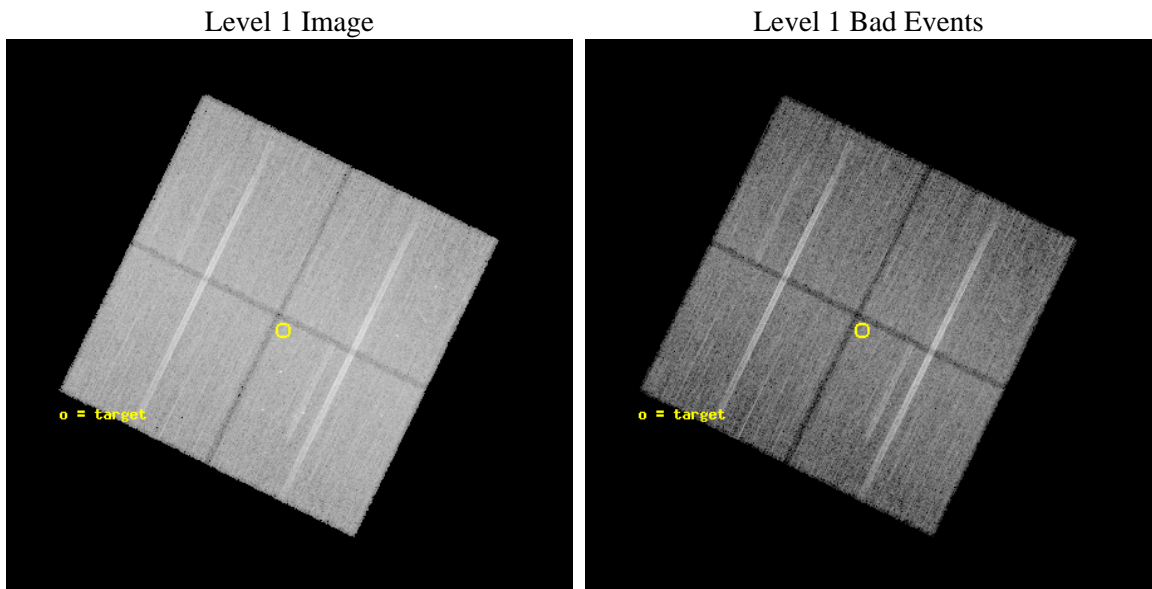
seq_num	200513	Sequence number
obs_id	8932	Observation id
title	Effects of massive star radiation on circumstellar disks evolution in the Eagle Nebula	Proposal title
observer	Dr. Mario Guarcello	Principal investigator
object	NGC 6611	Source name
dtcycle	0	&#160
cycle	P	events from which exps? Prim/Second/Both
ra_targ	274.9	Observer's specified target RA [deg]
dec_targ	-13.79	Observer's specified target Dec [deg]
ra_nom	274.89427146673	Nominal RA [deg]
dec_nom	-13.784151359038	Nominal Dec [deg]
roll_nom	116.20732399396	Nominal Roll [deg]
revision	2	Processing version of data
ontime	30553.559254706	Sum of GTIs [s]
livetime	30154.35450984	Livetime [s]
ontime0	30556.700235009	Sum of GTIs [s]
ontime1	30553.559254706	Sum of GTIs [s]
ontime2	30556.700235009	Sum of GTIs [s]
ontime3	30553.559254706	Sum of GTIs [s]
l2events	133086	Number of level 2 events



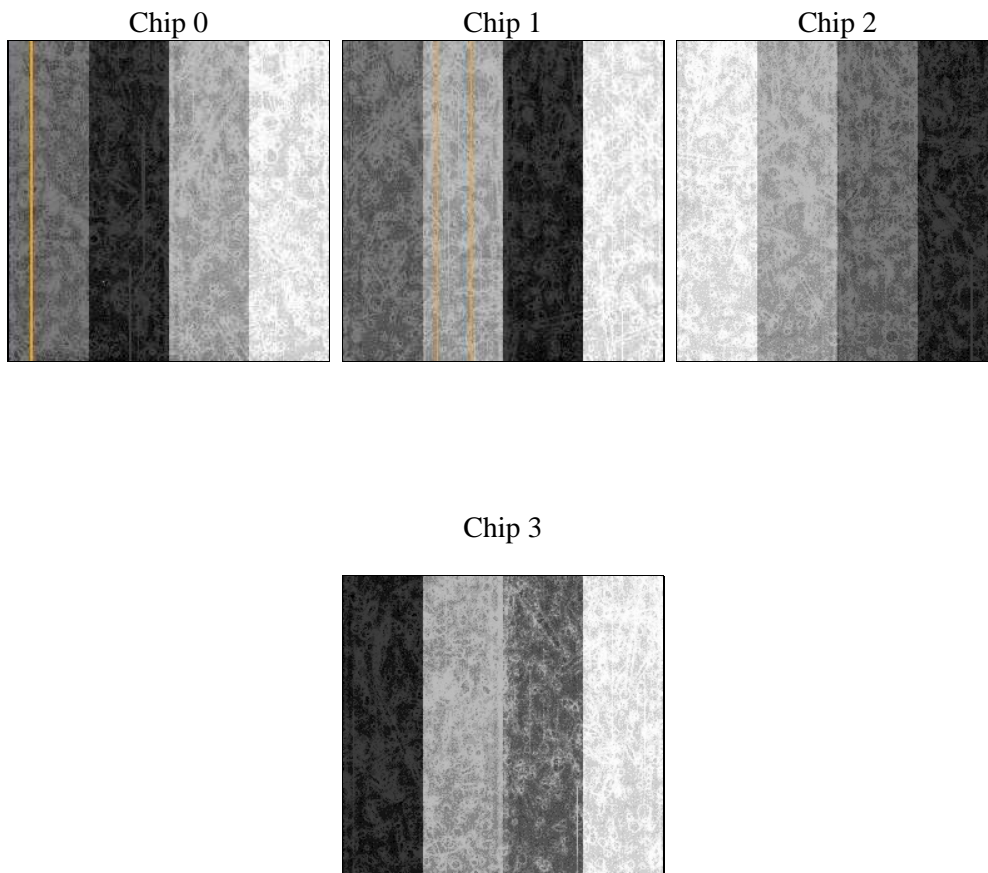
## 2 OBI

### 2.1 OBI

#### 2.1.1 Images



#### 2.1.2 Bias



### 2.1.3 Parameters

obi_num	0	Obi number	sched_exp_time	30500.000000	[s] Scheduled observation exposure time
ascdsver	8.4.4	Processing system revision	ontime	30553.559254706	Sum of GTIs [s]
caldbver	4.4.9	&#160	ontime0	30556.700235009	Sum of GTIs [s]
date	2012-05-16T03:03:17	Date and time of file creation	ontime1	30553.559254706	Sum of GTIs [s]
revision	2	Processing version of data	ontime2	30556.700235009	Sum of GTIs [s]
			ontime3	30553.559254706	Sum of GTIs [s]
			l1events	1112965	Number of level 1 events

### 2.1.4 Events

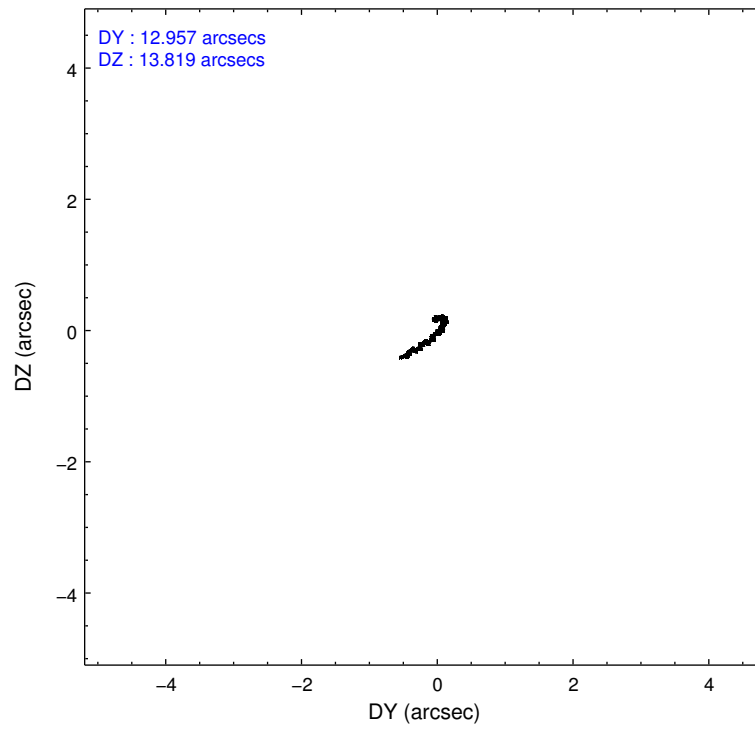
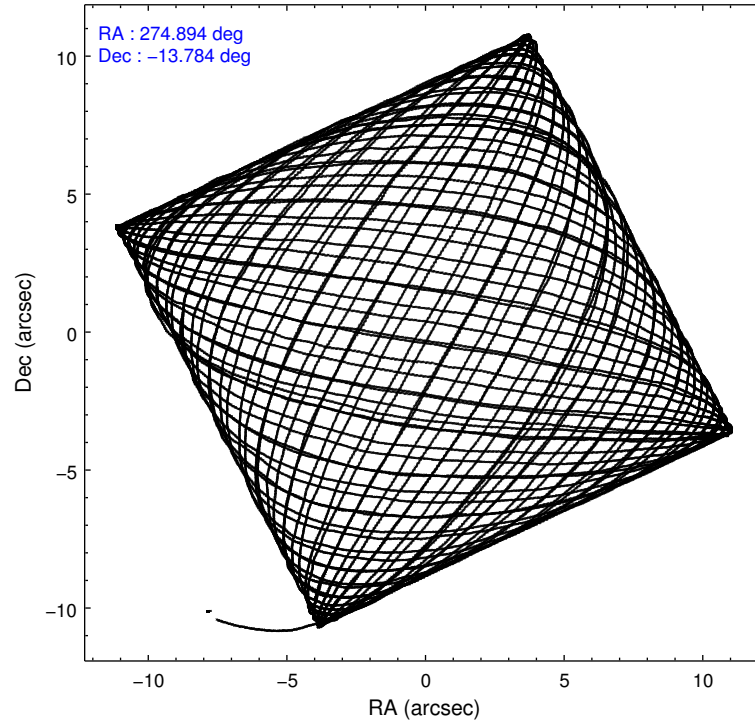
	ccd 0	ccd 1	ccd 2	ccd 3
level 1 events	269631	270574	286256	286504
rejected events	232431	231479	246602	248128
rejected %	86%	85%	86%	86%

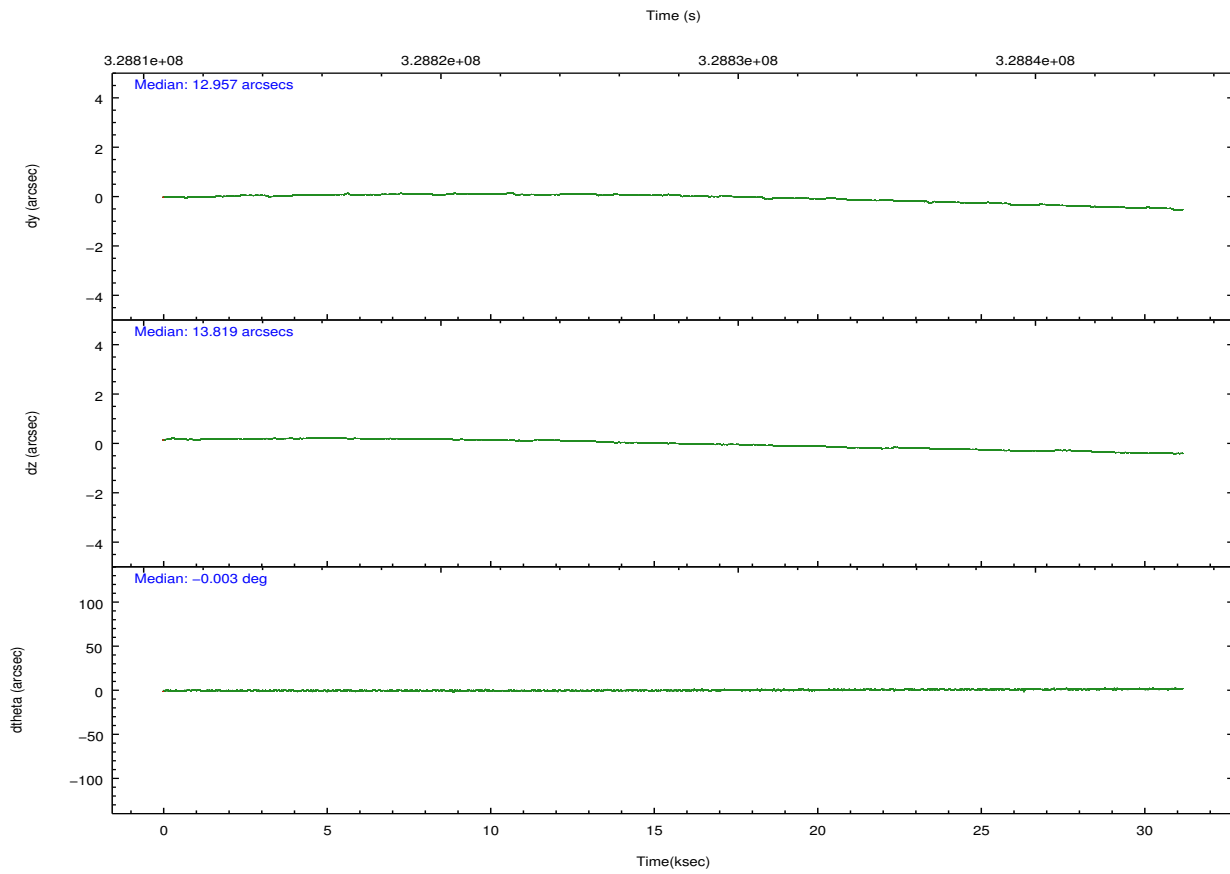
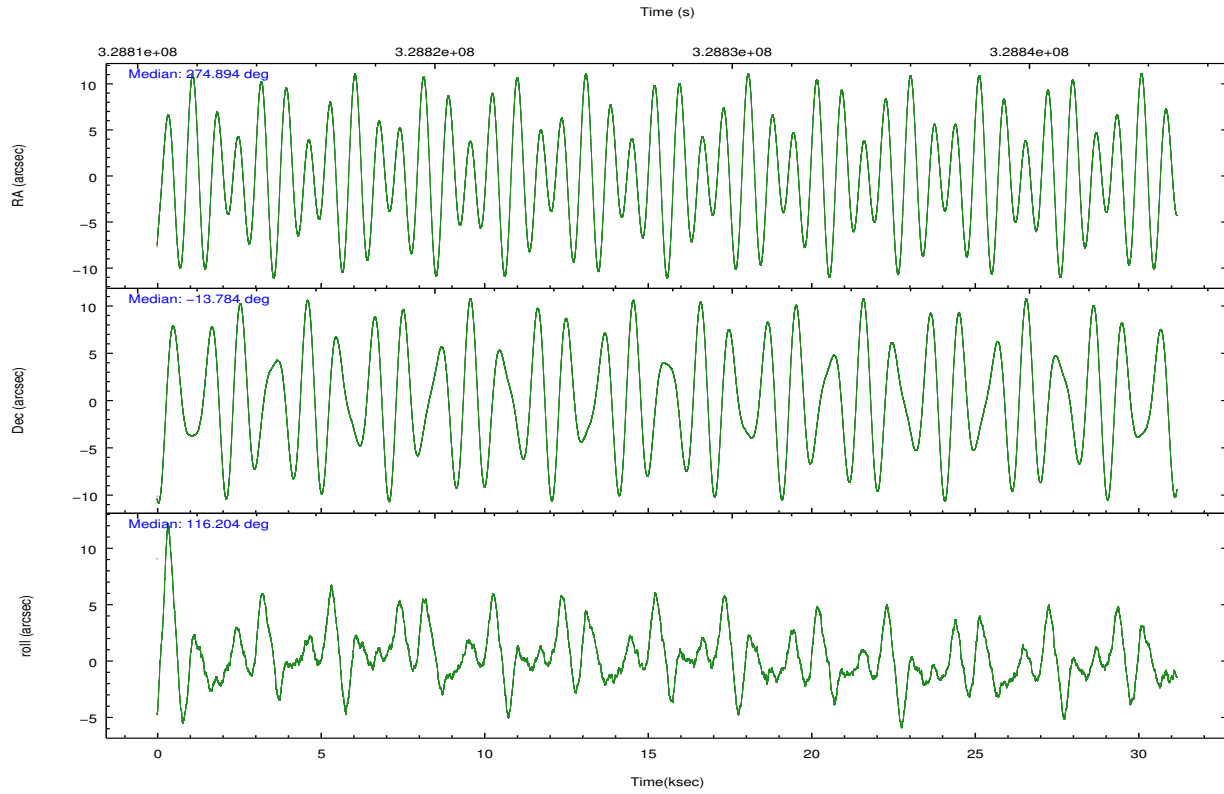
	ccd 0	ccd 1	ccd 2	ccd 3
grade 0 events	16094	15254	19270	17883
	5%	5%	6%	6%
grade 1 events	169	181	216	215
	0%	0%	0%	0%
grade 2 events	8181	9079	7750	7396
	3%	3%	2%	2%
grade 3 events	3372	3698	3312	3362
	1%	1%	1%	1%
grade 4 events	3160	3541	3391	3389
	1%	1%	1%	1%
grade 5 events	11987	12717	11752	13916
	4%	4%	4%	4%
grade 6 events	6397	7527	5932	6352
	2%	2%	2%	2%
grade 7 events	220271	218577	234633	233991
	81%	80%	81%	81%

## 2.2 Compared Parameters

Parameter	Planned	Actual	Parameter	Planned	Actual
Instrument	ACIS	ACIS	Obspar format version number	7	7
Detector	ACIS-0123	ACIS-0123	Obspar file type	PREDICTED	ACTUAL
Grating	NONE	NONE	Obspar update status	NONE	UPDATED
Data mode	FAINT	FAINT	Number of optional ACIS chips dropped	0	0
Observation mode	POINTING	POINTING	On-chip summing requested	N	N
[deg] Pointing RA	274.917866	274.8942714667286	Subarray requested	NONE	NONE
[deg] Pointing Dec	-13.799342	-13.78415135903755	Alternating exposures requested	N	N
[deg] Pointing Roll	116.004263	116.2073239939553	[s] Primary exposure time	0.000000	3.1
[mm] SIM focus pos	-0.782348	-0.7809083437167272			
[mm] SIM defocus	0	0.001439871863259334			
[mm] SIM translation stage pos	-233.592463	-233.5874344608287			
[mm] SIM translation stage offset	0	-0.005018542100998502			
[s] Observation start time (MET)	328812890.184000	328811777.23603			
Observation start date	2008-06-02T16:53:45	2008-06-02T16:36:17			
[s] Observation end time (MET)	328843390.184000	328844412.21262			
Observation end date	2008-06-03T01:22:05	2008-06-03T01:40:12			
Read mode	TIMED	TIMED			

## 2.3 Aspect



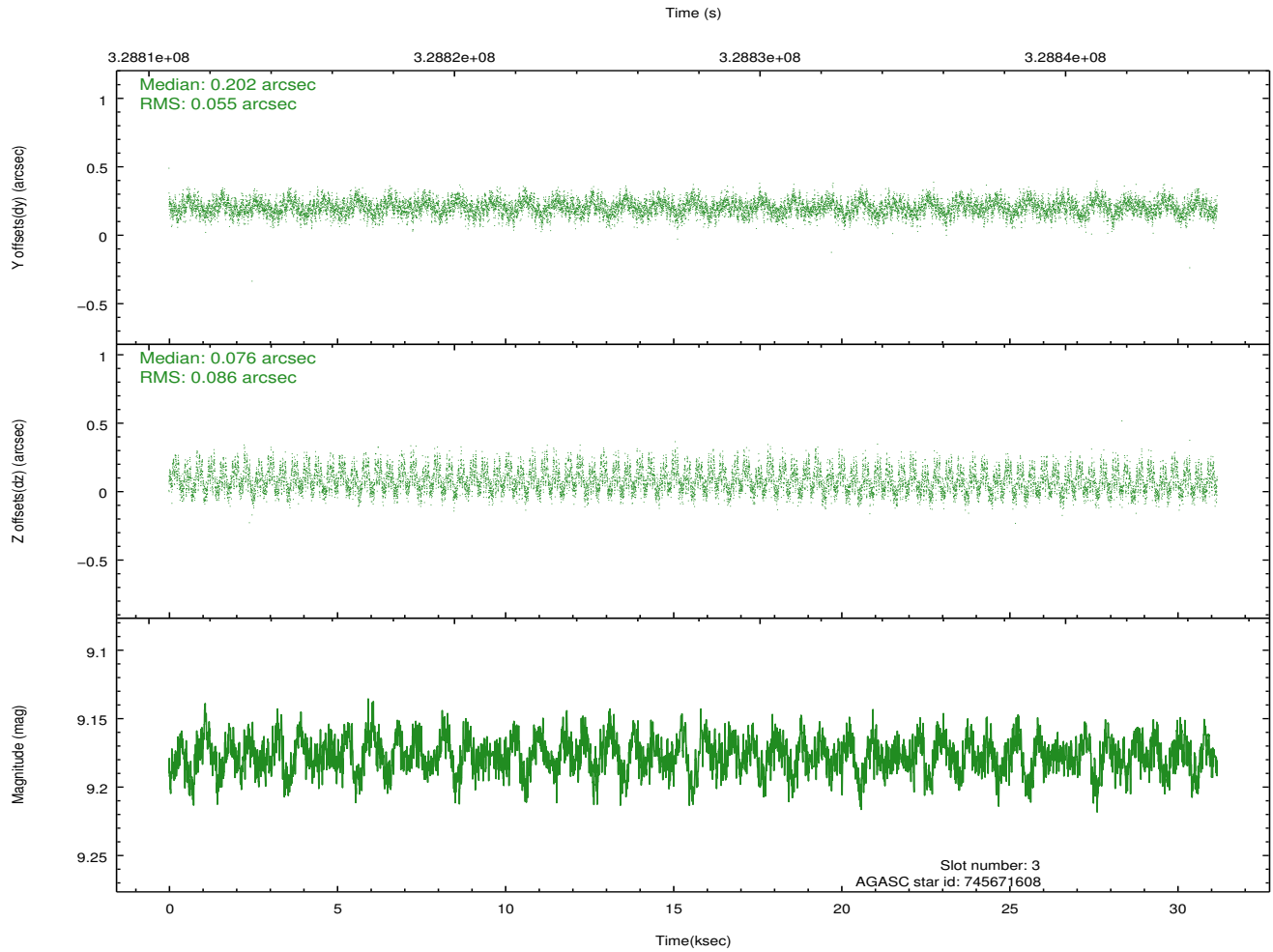
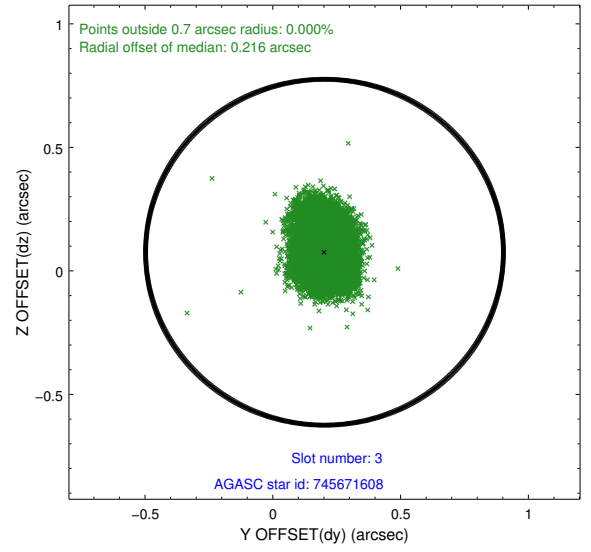
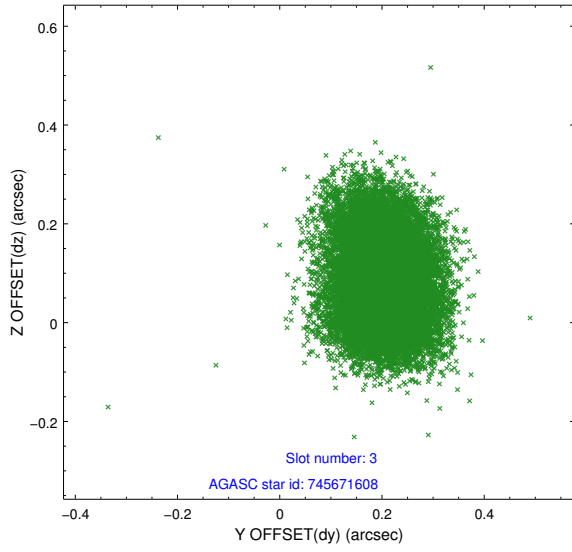


### Slot Statistics

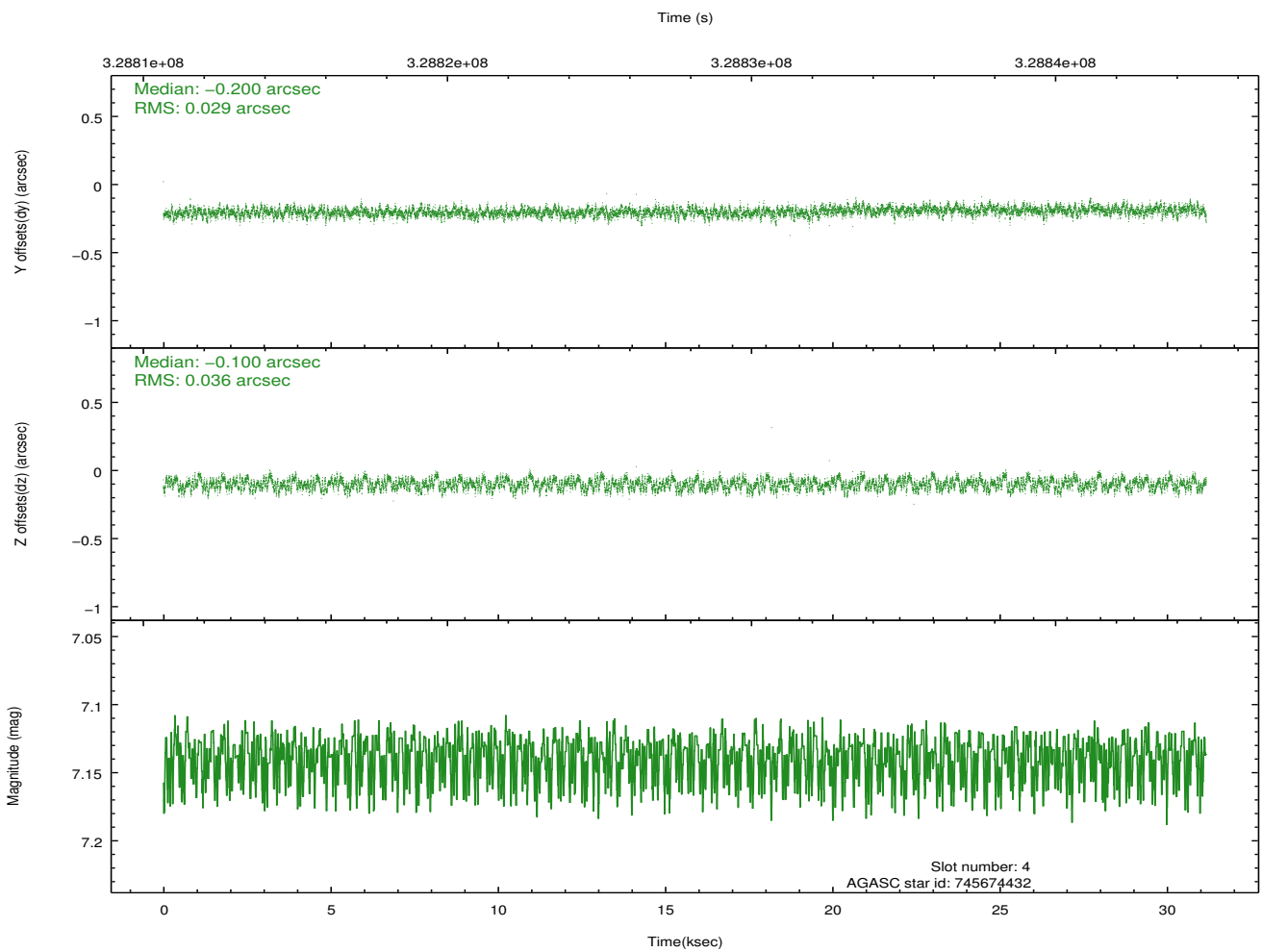
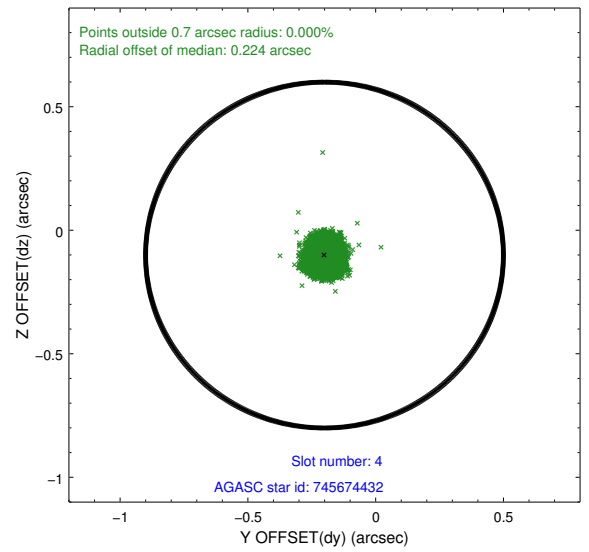
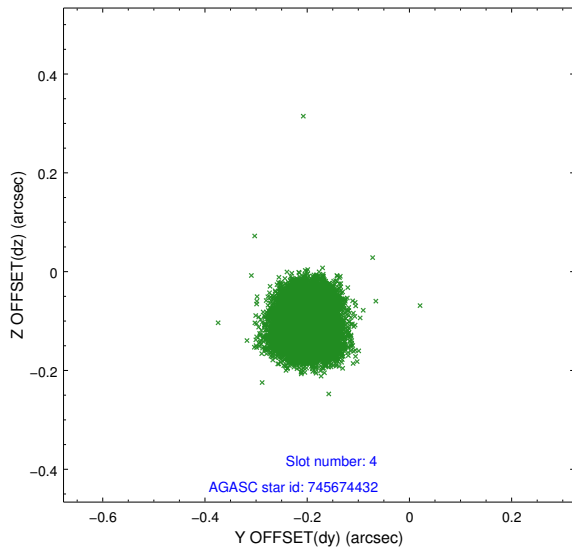
slot	status	id	mag	n_pts	med_dy	med_dz	dr1	dr2	ra	dec	mean_y	mean_z
0	FID	ACIS-I-1	7.02	7606	0.014	0.031	0.011	0.019	0.000000	0.000000	926.66	-837.32
1	FID	ACIS-I-5	7.00	7606	-0.183	0.033	0.009	0.014	0.000000	0.000000	-1821.63	1060.12
2	FID	ACIS-I-6	7.01	7606	0.077	0.007	0.010	0.016	0.000000	0.000000	392.17	1704.69
3	GUIDE	745671608	9.18	15200	0.202	0.076	0.110	0.174	275.327786	-13.786724	-588.26	-1307.18
4	GUIDE	745674432	7.14	15208	-0.200	-0.100	0.050	0.079	274.729377	-13.541343	1123.64	185.93
5	GUIDE	745675656	7.96	15208	-0.086	-0.054	0.071	0.117	274.656383	-13.977352	-175.87	1102.38
6	GUIDE	745676512	8.97	15198	0.083	0.171	0.070	0.115	275.415079	-14.258251	-2246.86	-833.74
7	GUIDE	745680352	9.02	15190	-0.003	-0.093	0.099	0.161	274.602320	-14.174957	-733.60	1583.40

## 2.4 Star Slots

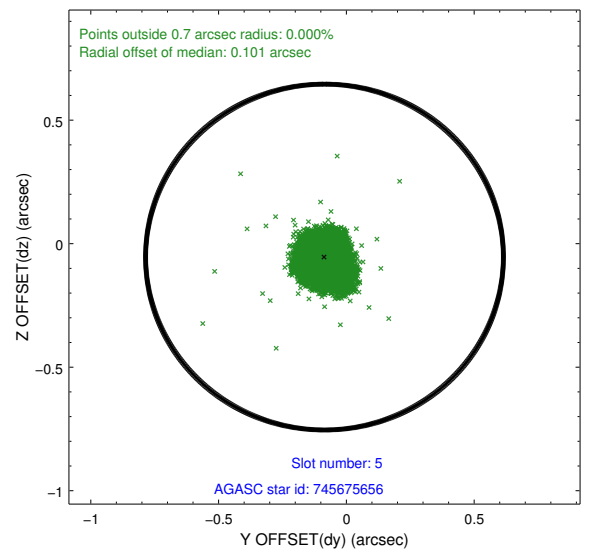
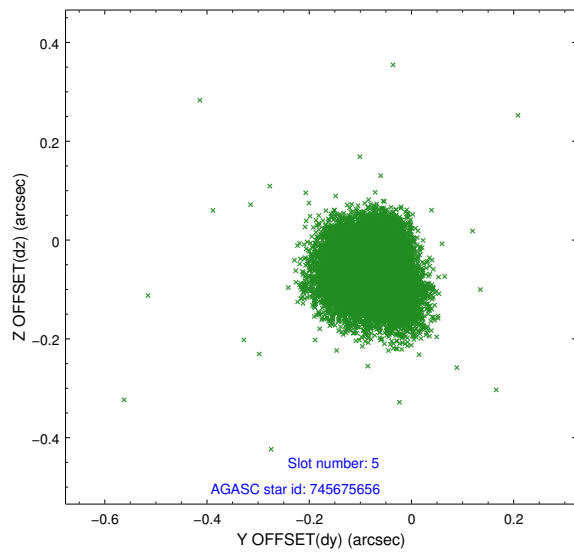
### 2.4.1 Slot 3



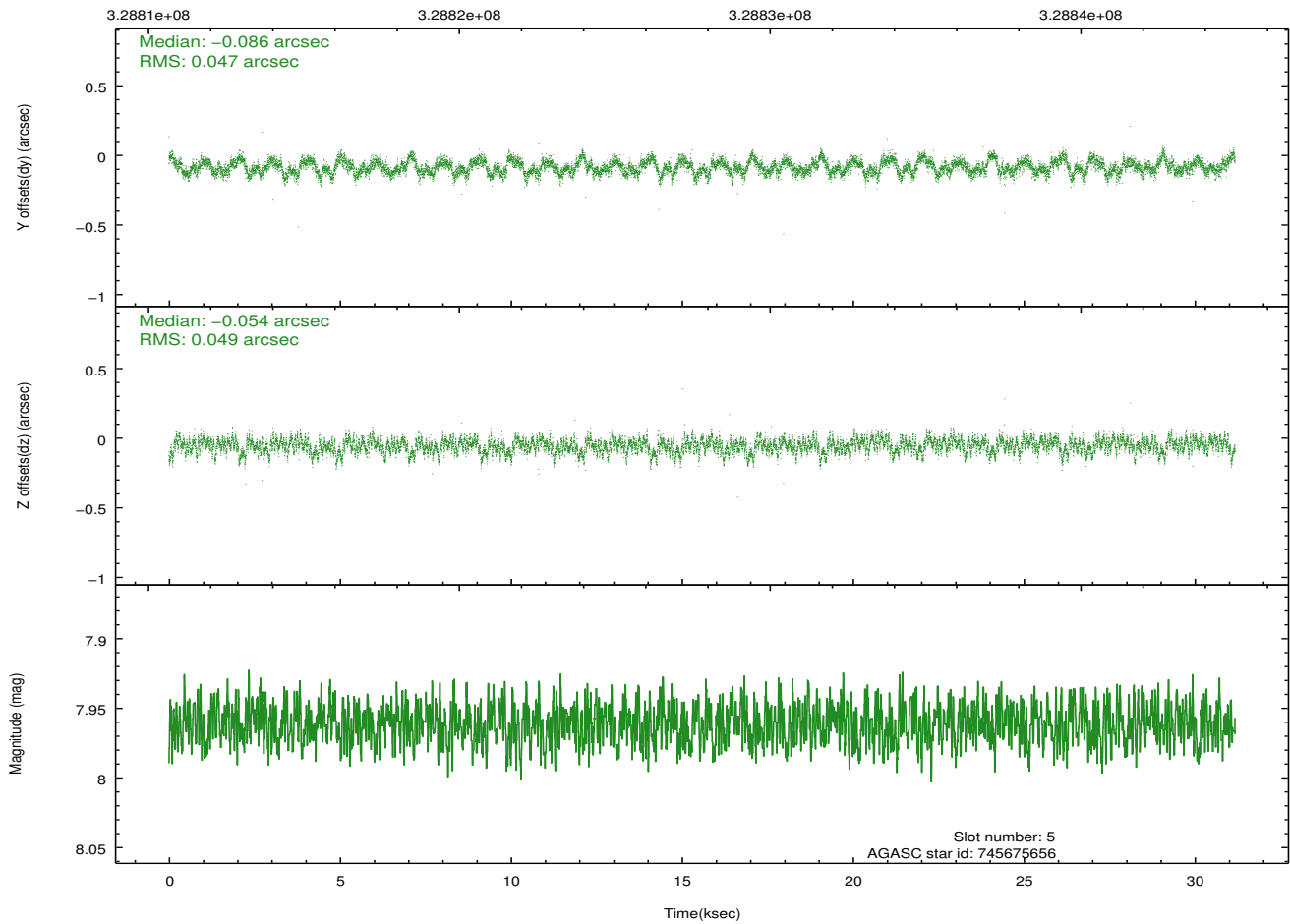
## 2.4.2 Slot 4



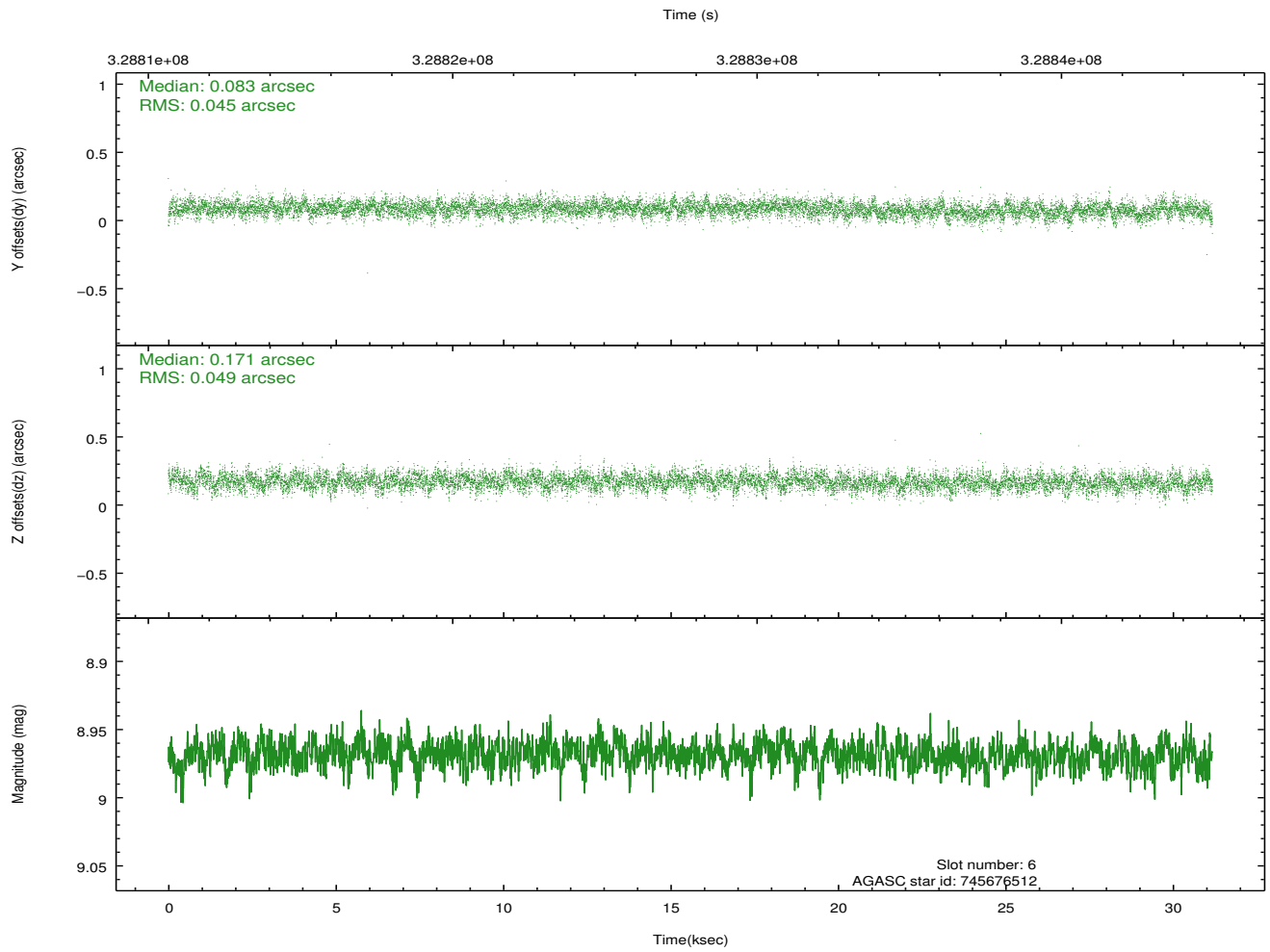
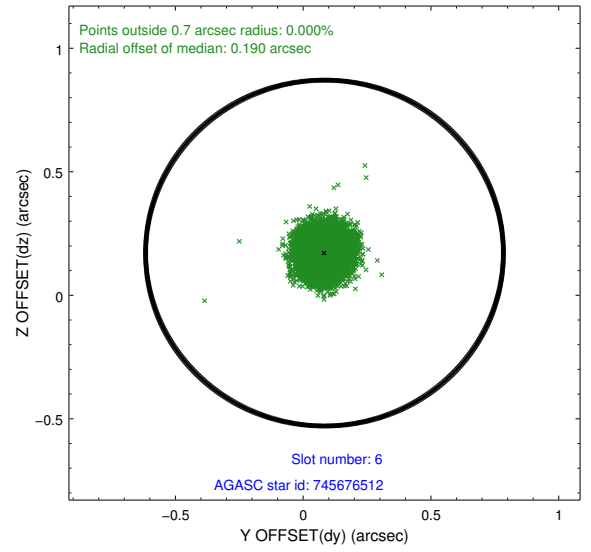
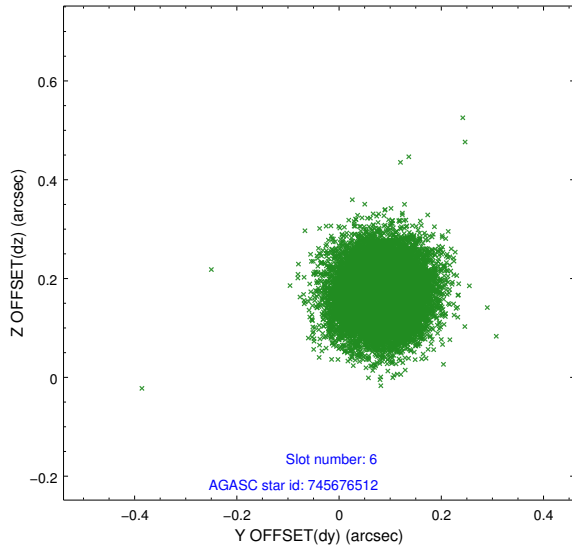
### 2.4.3 Slot 5



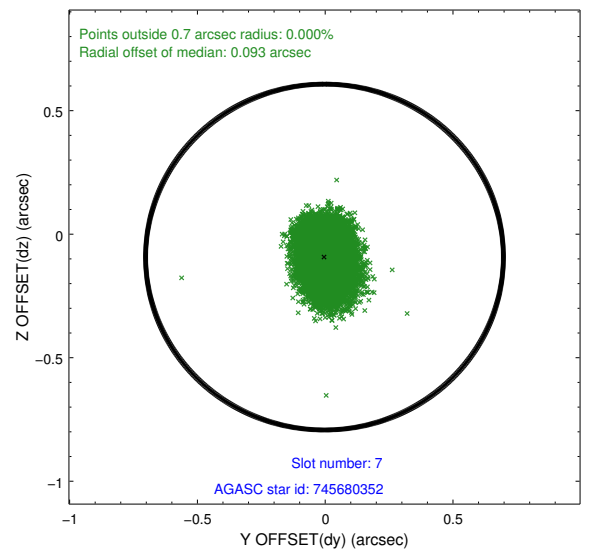
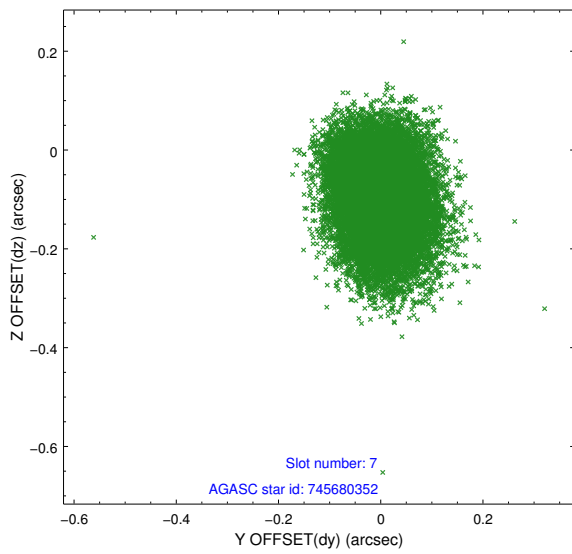
Time (s)



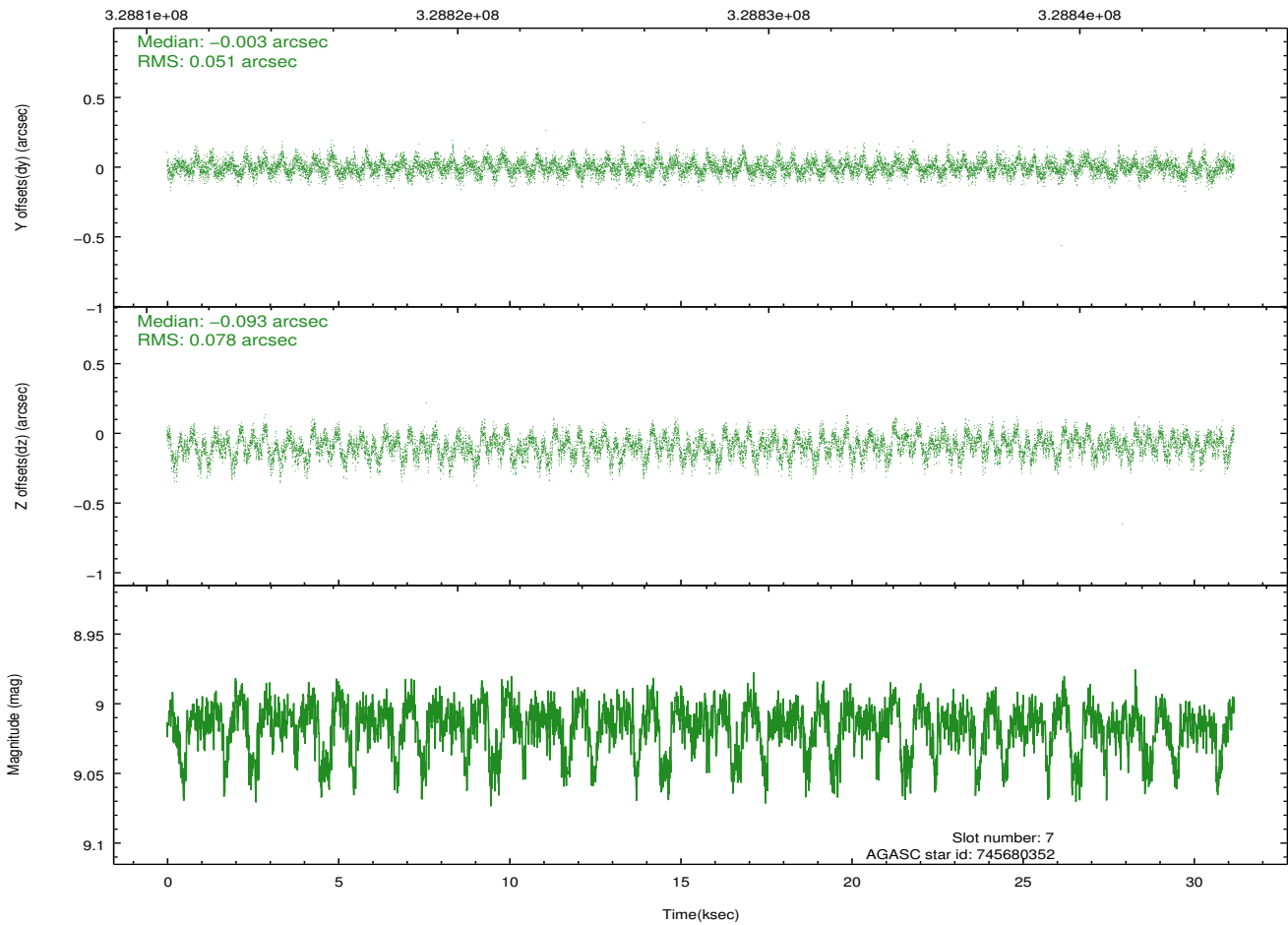
### 2.4.4 Slot 6



## 2.4.5 Slot 7

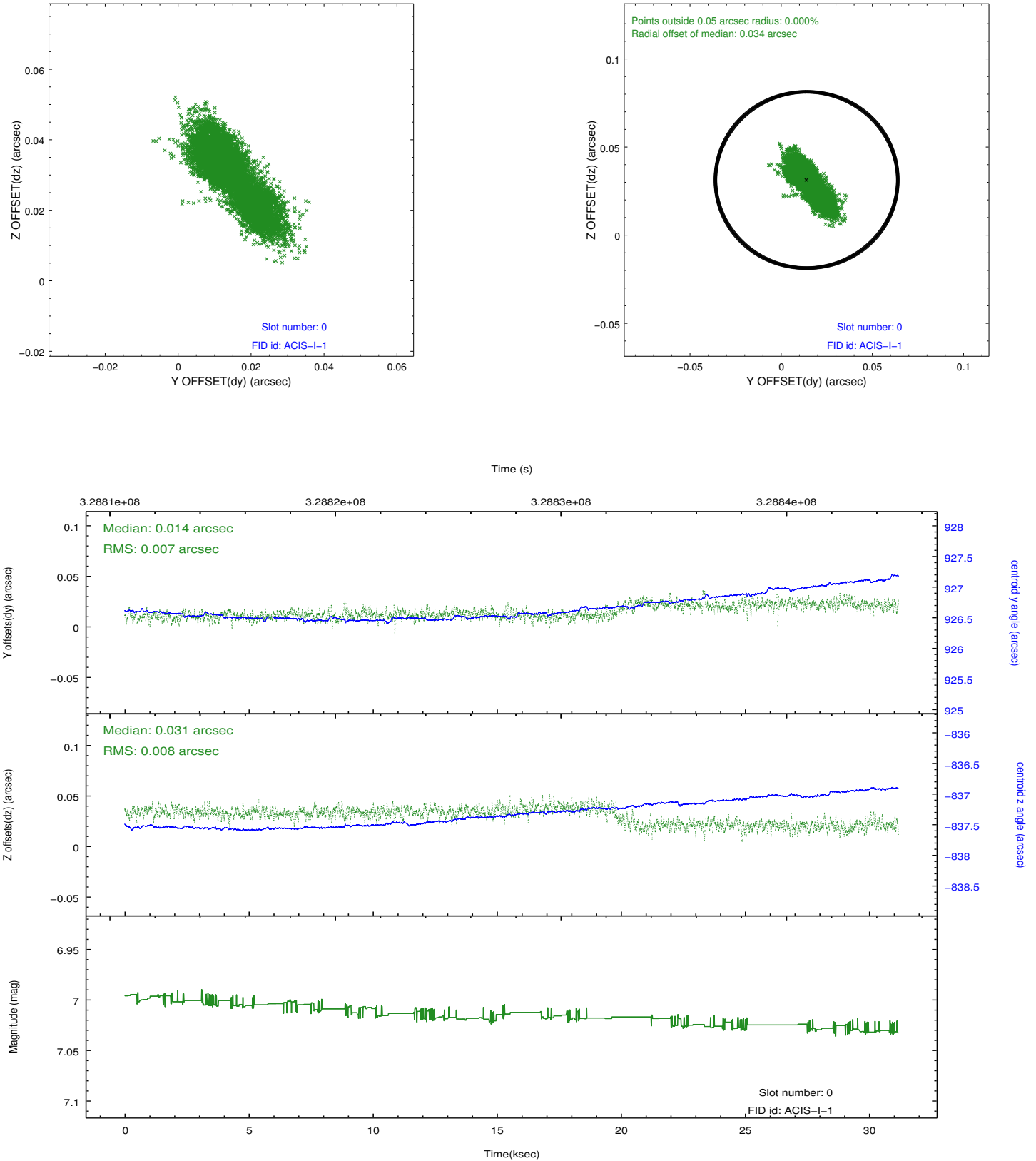


Time (s)

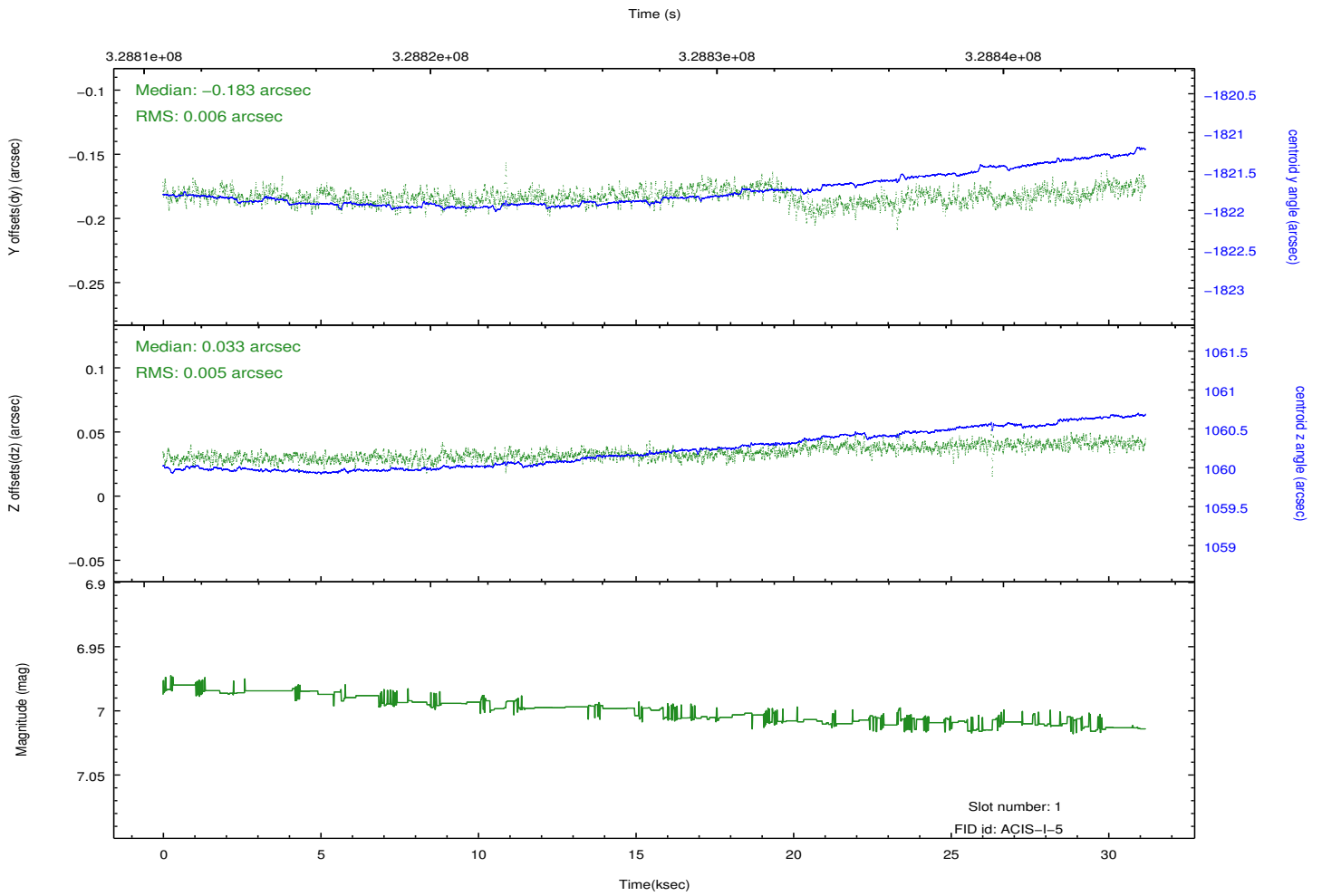
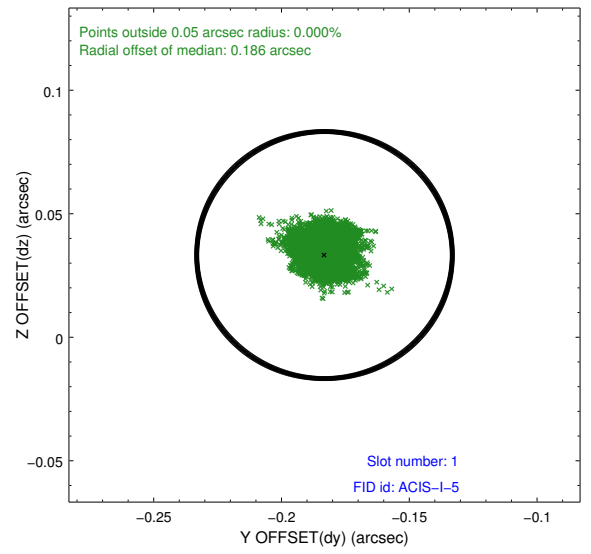
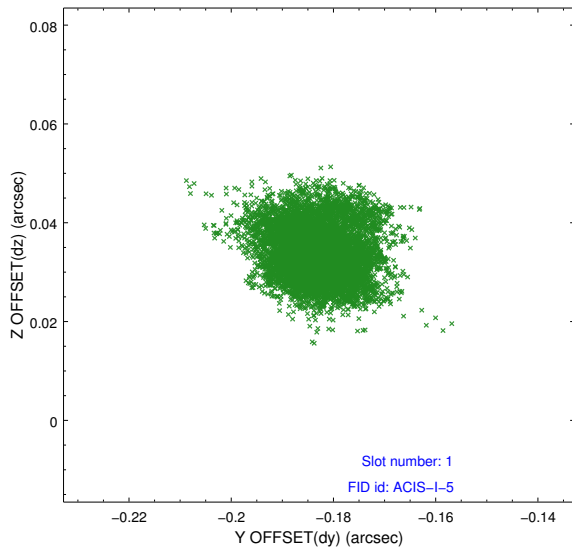


## 2.5 FID Slots

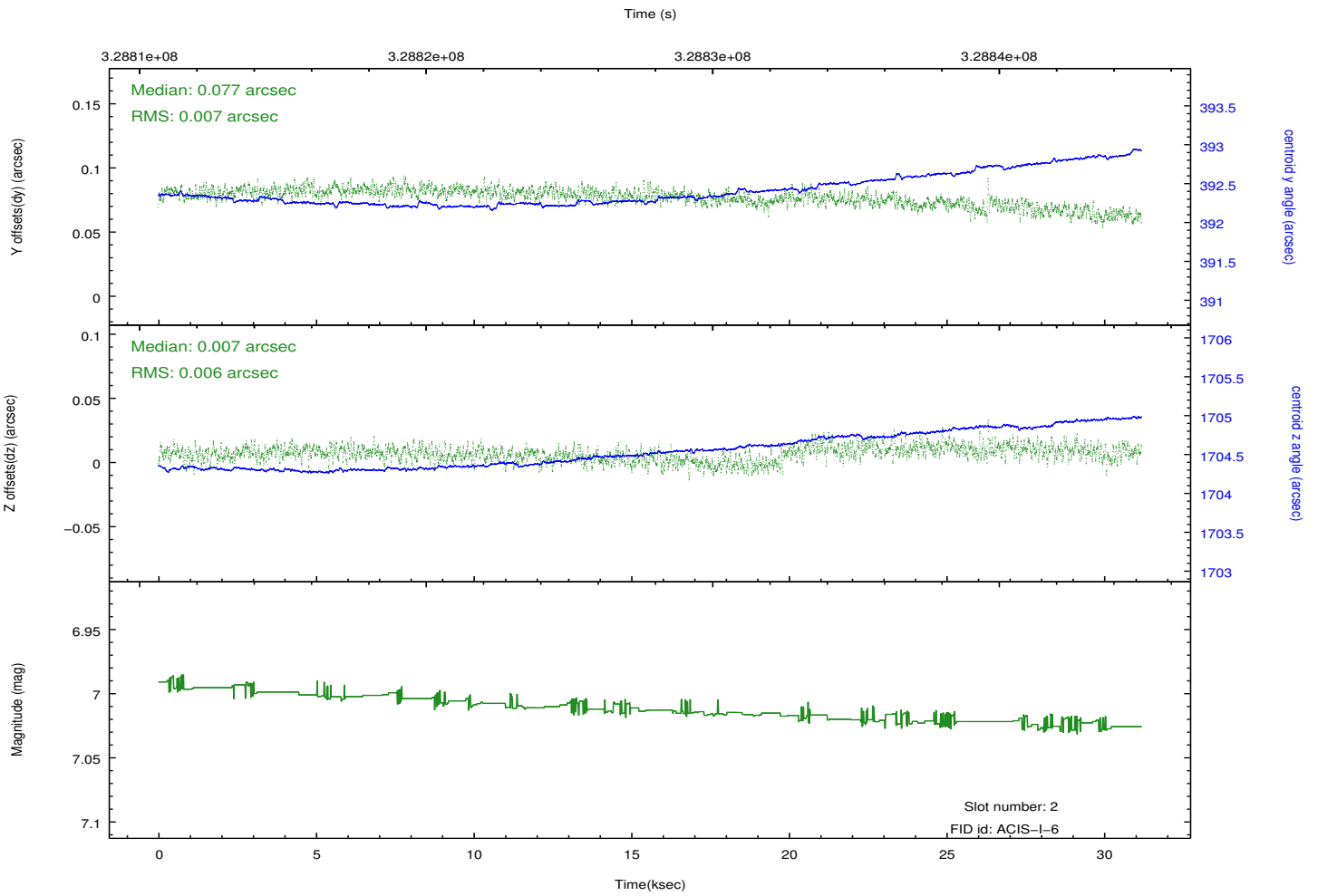
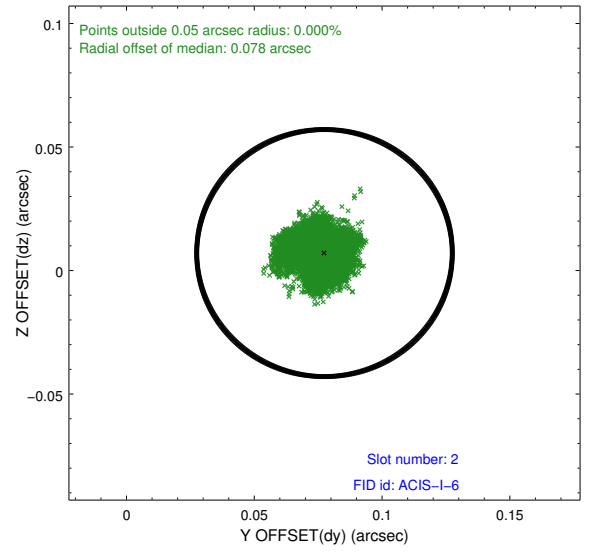
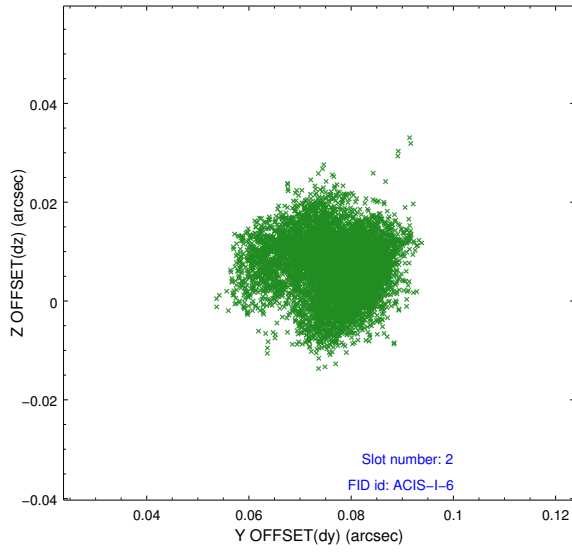
### 2.5.1 Slot 0



## 2.5.2 Slot 1



### 2.5.3 Slot 2



# A Summary

## A.1 Status

V&V Scientist	Jen Lauer
V&V Date (YYYY-MM-DD)	2012.05.22
V&V Edition	1
V&V Disposition and Status	OK
V&V Charge Time	30.5535592

## A.2 Comments