

V&V Reference Report

L2 ASCDS Version : 8.4.4

Observation 9772 - L2 Version 2
Chandra X-Ray Center

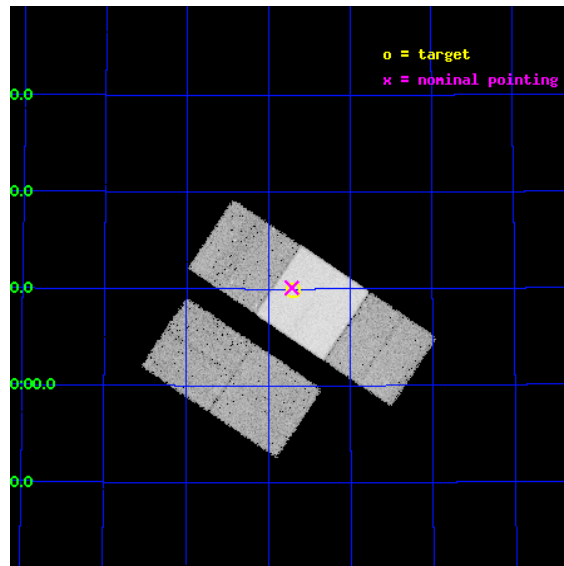
L2 Processing Date : May 5 2012

Contents

1	Front	2
2	OBI	3
2.1	OBI	3
2.1.1	Images	3
2.1.2	Bias	3
2.1.3	Parameters	4
2.1.4	Events	4
2.2	Compared Parameters	5
2.3	Aspect	6
2.4	Star Slots	9
2.4.1	Slot 3	9
2.4.2	Slot 4	10
2.4.3	Slot 5	11
2.4.4	Slot 6	12
2.4.5	Slot 7	13
2.5	FID Slots	14
2.5.1	Slot 0	14
2.5.2	Slot 1	15
2.5.3	Slot 2	16
A	Summary	17
A.1	Status	17
A.2	Comments	17

1 Front

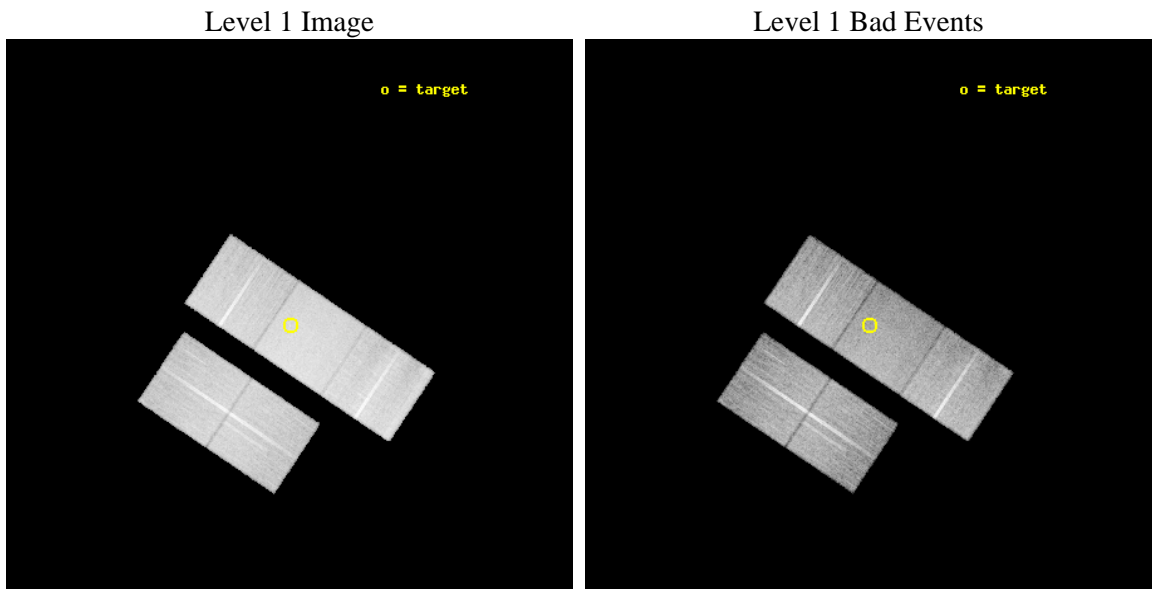
seq_num	600652	Sequence number
obs_id	9772	Observation id
title	DUST DISKS AND THE EVOLUTION OF S0 GALAXIES	Proposal title
observer	Dr. Raymond White	Principal investigator
object	NGC 5422	Source name
dtcycle	0	
cycle	P	events from which exps? Prim/Second/Both
ra_targ	210.175	Observer's specified target RA [deg]
dec_targ	55.164444	Observer's specified target Dec [deg]
ra_nom	210.17858981637	Nominal RA [deg]
dec_nom	55.16886138415	Nominal Dec [deg]
roll_nom	33.823702830818	Nominal Roll [deg]
revision	2	Processing version of data
ontime	18637.200143337	Sum of GTIs [s]
livetime	18393.691402957	Livetime [s]
ontime2	18637.200143337	Sum of GTIs [s]
ontime3	18630.918172836	Sum of GTIs [s]
ontime6	18634.05915314	Sum of GTIs [s]
ontime7	18637.200143337	Sum of GTIs [s]
ontime8	18637.200143337	Sum of GTIs [s]
l2events	181047	Number of level 2 events



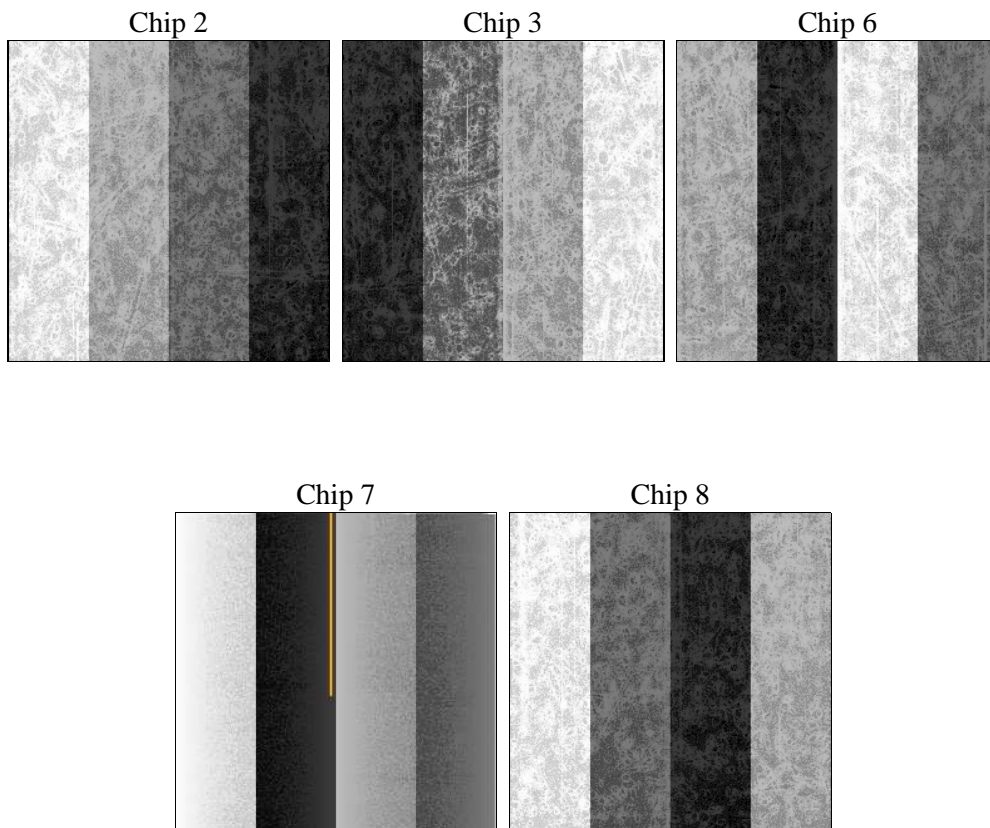
2 OBI

2.1 OBI

2.1.1 Images



2.1.2 Bias



2.1.3 Parameters

obi_num	0	Obi number	sched_exp_time	18500.000000	[s] Scheduled observation exposure time
ascdsver	8.4.4	Processing system revision	ontime	18637.200143337	Sum of GTIs [s]
caldbver	4.4.9	 	ontime2	18637.200143337	Sum of GTIs [s]
date	2012-05-05T21:07:17	Date and time of file creation	ontime3	18630.918172836	Sum of GTIs [s]
revision	2	Processing version of data	ontime6	18634.05915314	Sum of GTIs [s]
			ontime7	18637.200143337	Sum of GTIs [s]
			ontime8	18637.200143337	Sum of GTIs [s]
			l1events	1036485	Number of level 1 events

2.1.4 Events

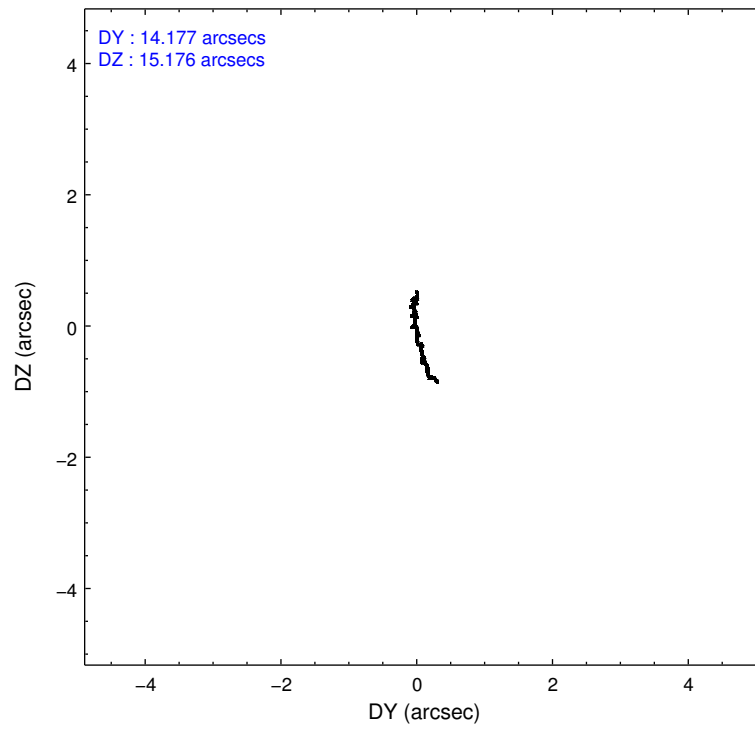
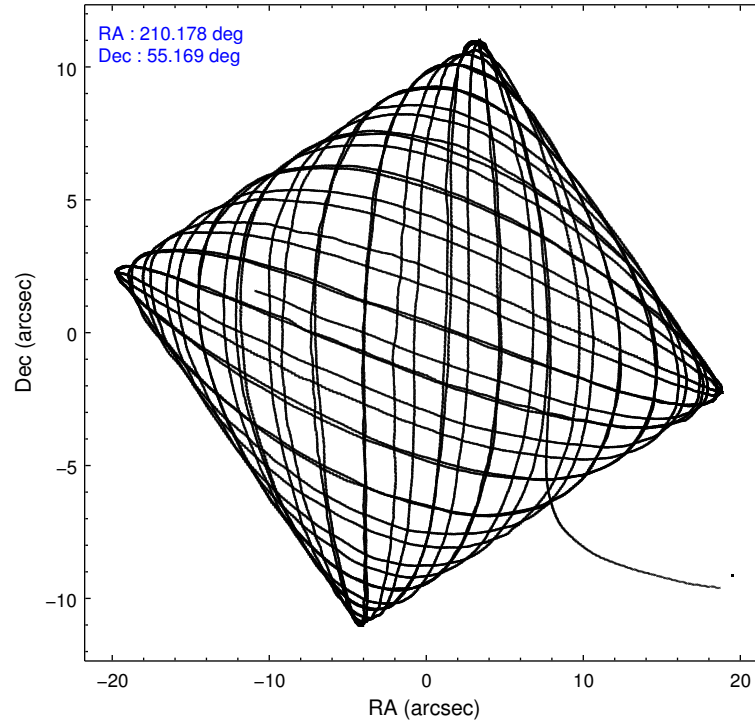
	ccd 2	ccd 3	ccd 6	ccd 7	ccd 8
level 1 events	178640	179960	189301	252324	236260
rejected events	157071	158700	166818	148325	183827
rejected %	87%	88%	88%	58%	77%

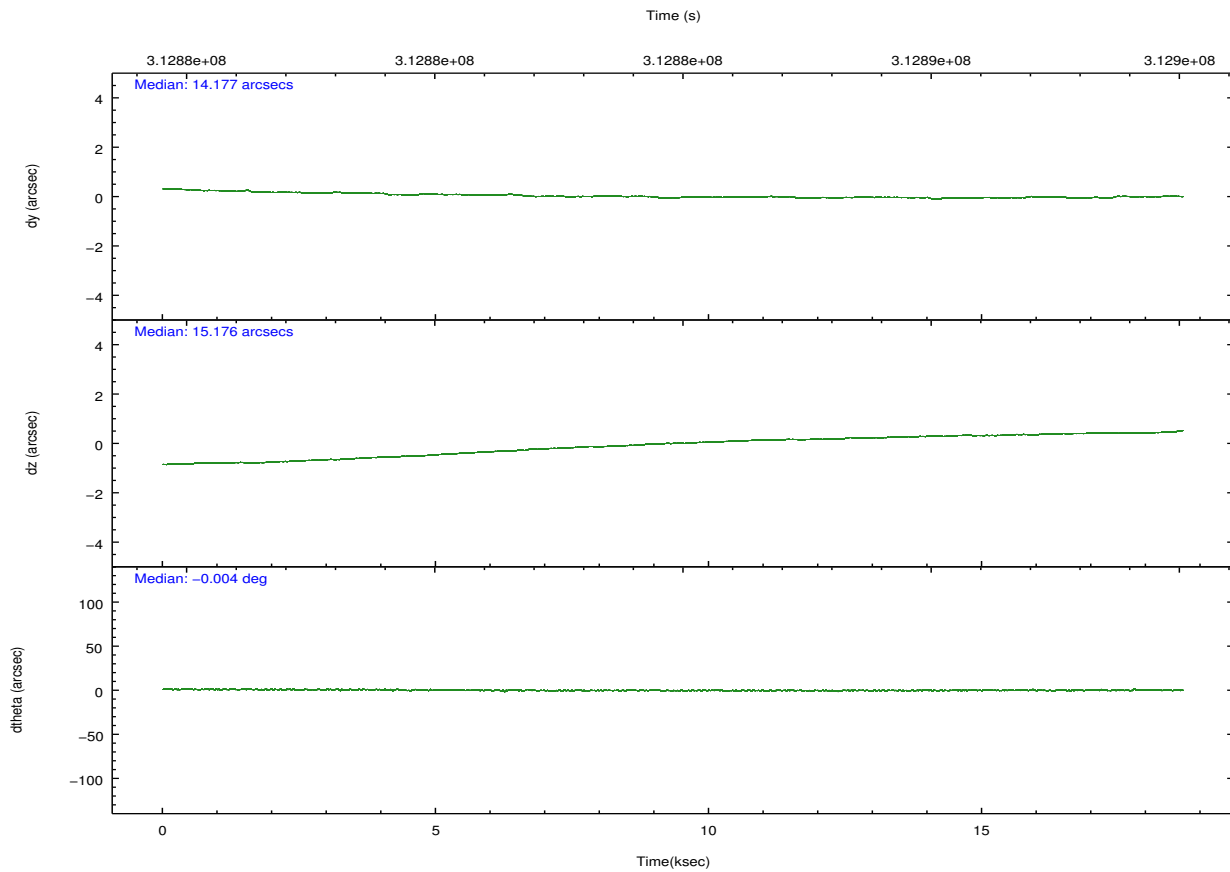
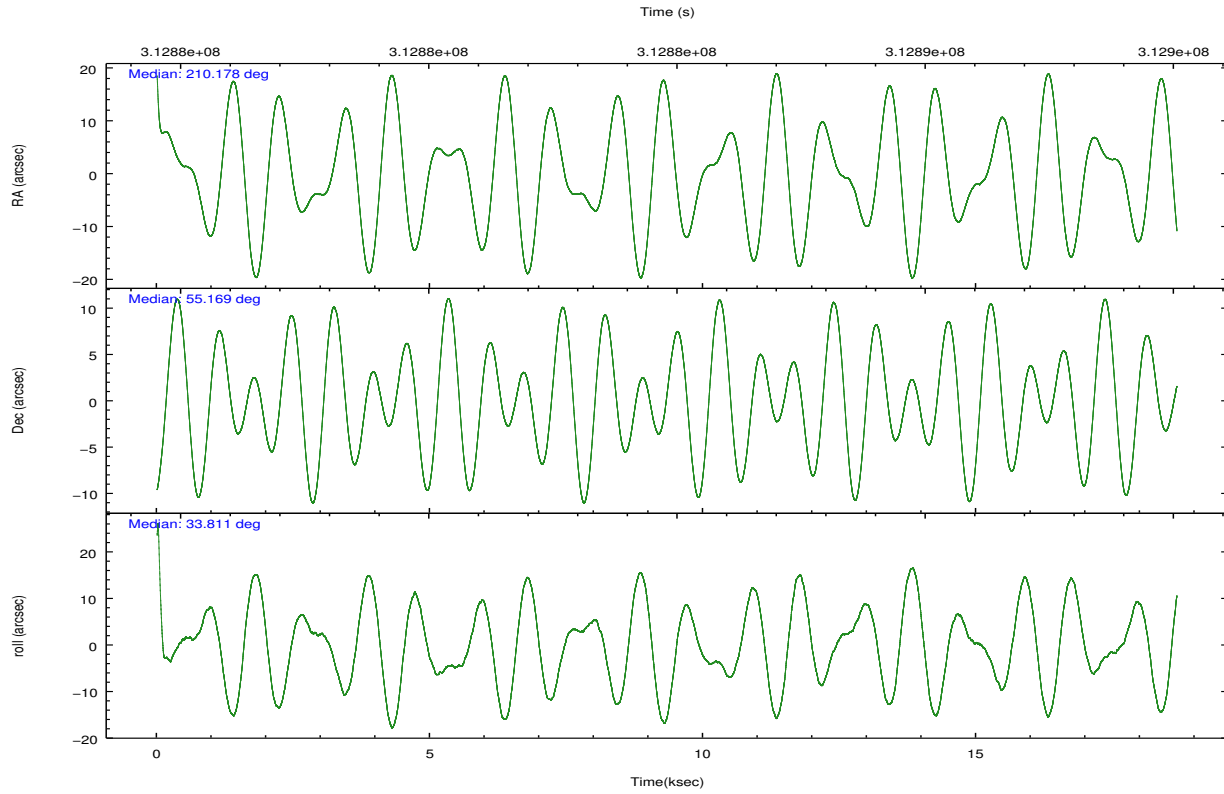
	ccd 2	ccd 3	ccd 6	ccd 7	ccd 8
grade 0 events	9358	9181	8650	9015	16394
	5%	5%	4%	3%	6%
grade 1 events	132	139	107	278	181
	0%	0%	0%	0%	0%
grade 2 events	4597	4299	4968	21003	11910
	2%	2%	2%	8%	5%
grade 3 events	2021	1976	2052	8718	5338
	1%	1%	1%	3%	2%
grade 4 events	1995	2079	2169	8712	5002
	1%	1%	1%	3%	2%
grade 5 events	6984	8501	8706	23799	11675
	3%	4%	4%	9%	4%
grade 6 events	3603	3730	4647	56572	13792
	2%	2%	2%	22%	5%
grade 7 events	149950	150055	158002	124227	171968
	83%	83%	83%	49%	72%

2.2 Compared Parameters

Parameter	Planned	Actual	Parameter	Planned	Actual
Instrument	ACIS	ACIS	Obspar format version number	7	7
Detector	ACIS-23678	ACIS-23678	Obspar file type	PREDICTED	ACTUAL
Grating	NONE	NONE	Obspar update status	NONE	UPDATED
Data mode	VFAINT	VFAINT	CCD I0 on	N	N
Observation mode	POINTING	POINTING	CCD I1 on	N	N
[deg] Pointing RA	210.158007	210.1785898163737	CCD I2 on	O1	Y
[deg] Pointing Dec	55.144152	55.16886138414996	CCD I3 on	O2	Y
[deg] Pointing Roll	33.683950	33.82370283081804	CCD S0 on	N	N
[mm] SIM focus pos	-0.684267	-0.6828225247311905	CCD S1 on	N	N
[mm] SIM defocus	0	0.001444936568705701	CCD S2 on	O4	Y
[mm] SIM translation stage pos	-190.132523	-190.1425803651734	CCD S3 on	Y	Y
[mm] SIM translation stage offset	0	0.01005778216563158	CCD S4 on	O3	Y
[s] Observation start time (MET)	312875644.184000	312874607.52433	CCD S5 on	N	N
Observation start date	2007-12-01T05:52:59	2007-12-01T05:36:47	Number of optional ACIS chips dropped	0	0
[s] Observation end time (MET)	312894144.184000	312894939.42532	On-chip summing requested	N	N
Observation end date	2007-12-01T11:01:19	2007-12-01T11:15:39	Subarray requested	NONE	NONE
Read mode	TIMED	TIMED	Alternating exposures requested	N	N
			[s] Primary exposure time	0.000000	3.1

2.3 Aspect



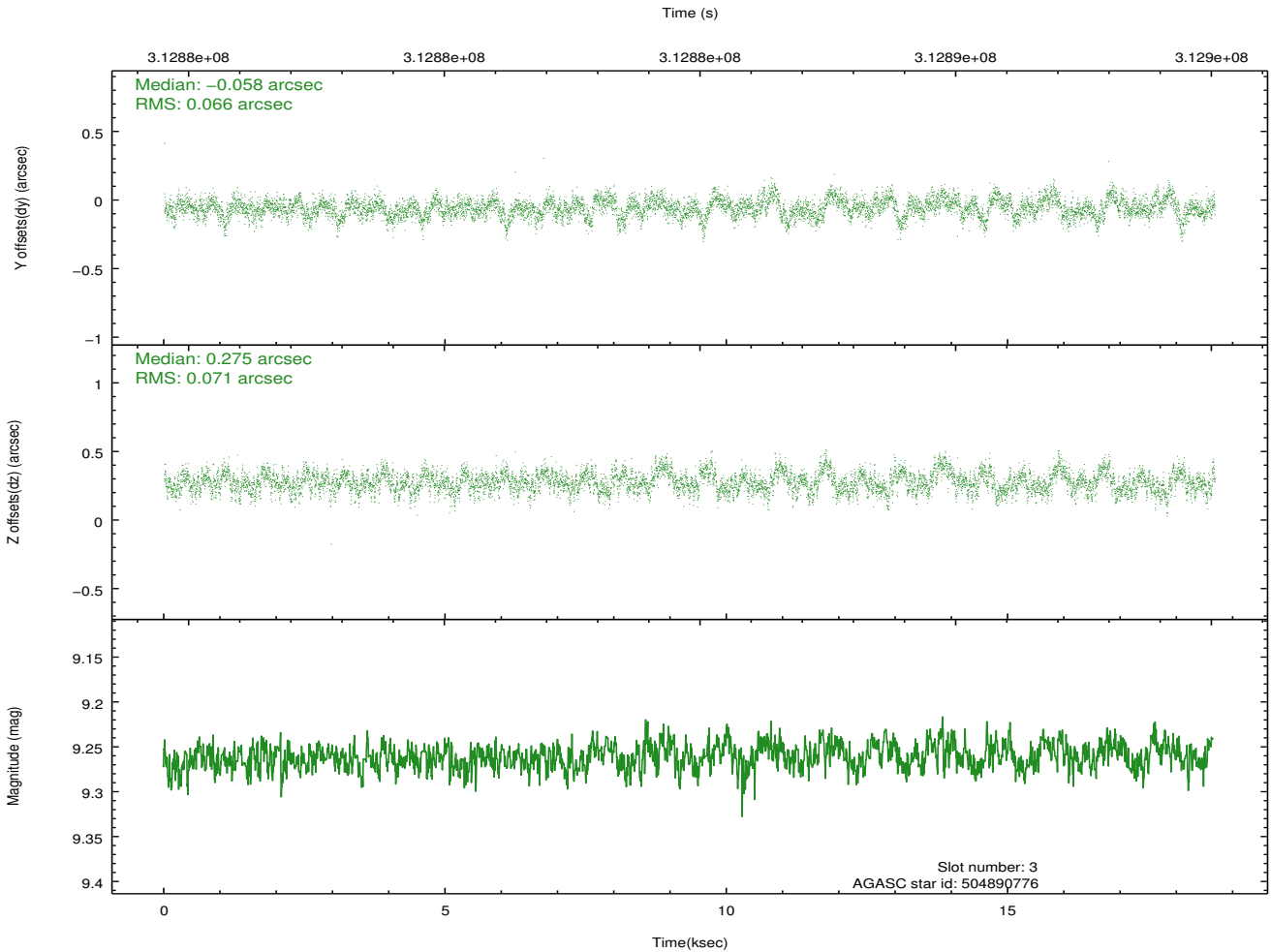
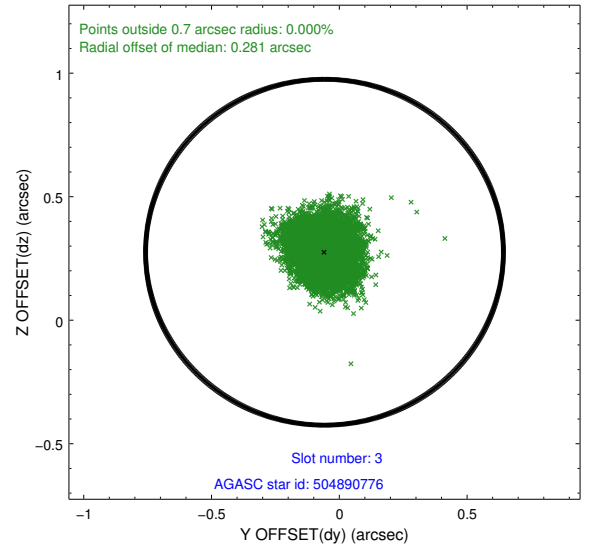
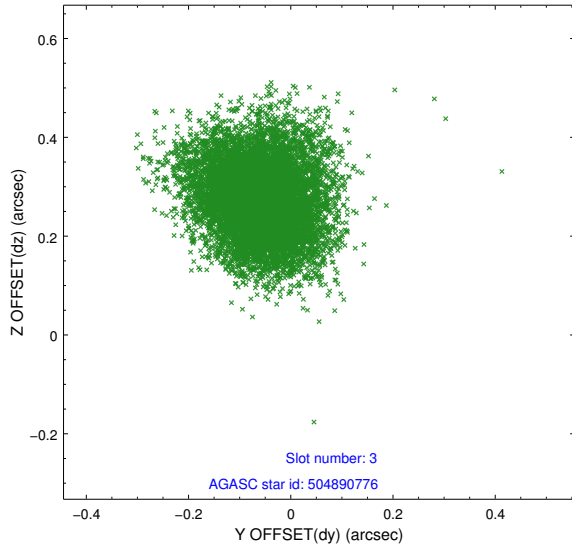


Slot Statistics

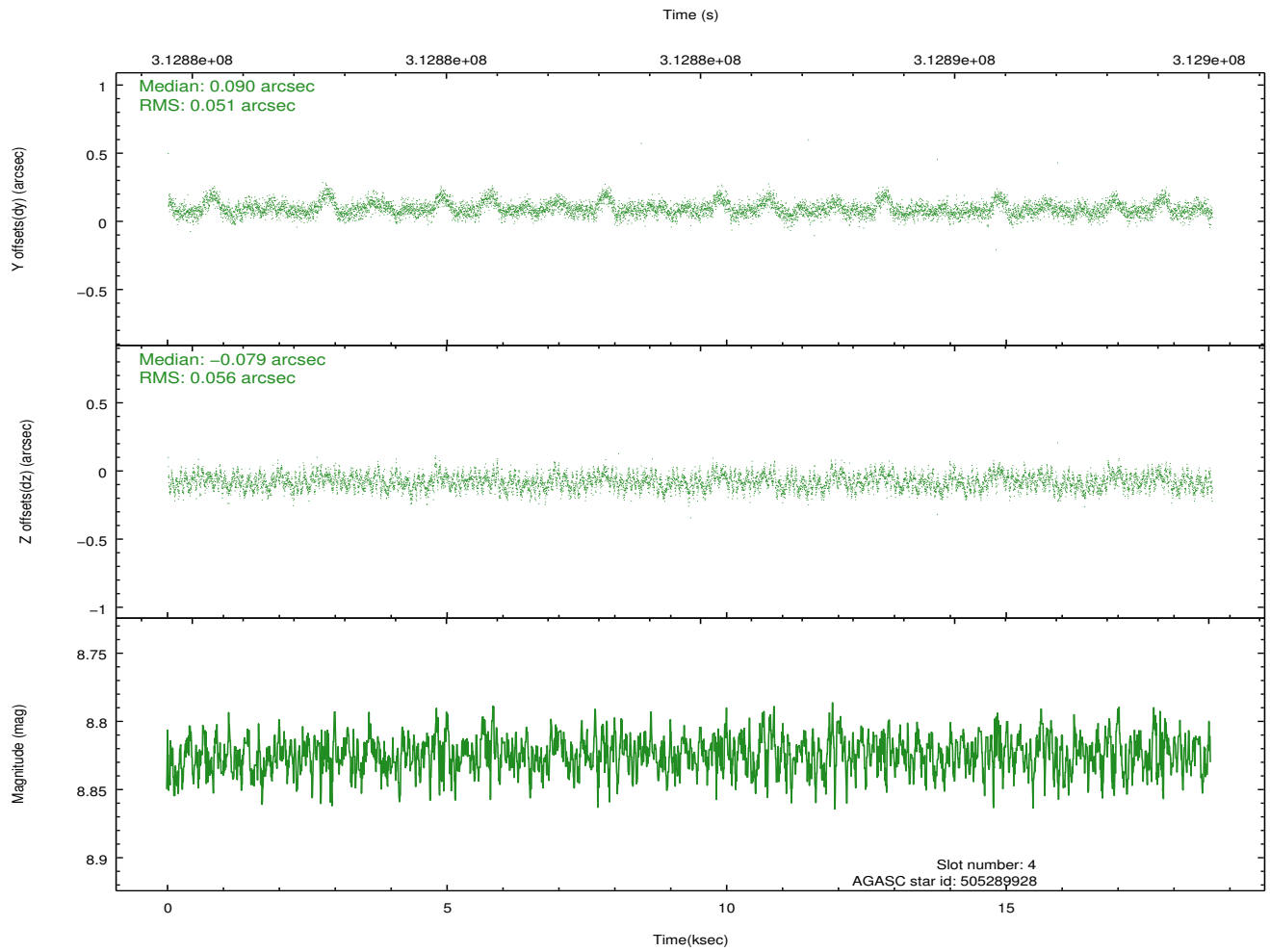
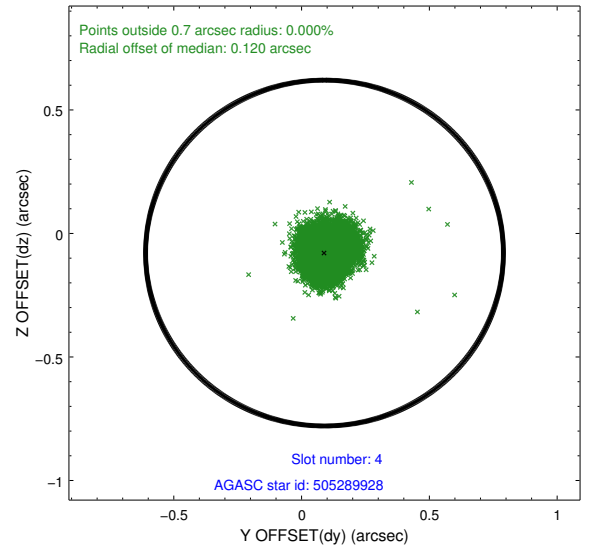
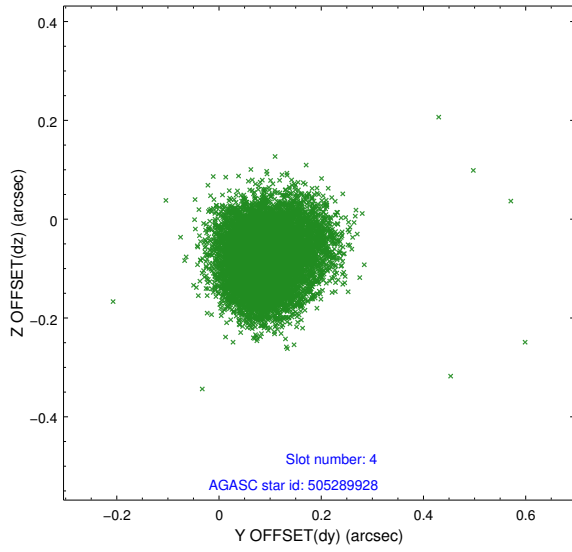
slot	status	id	mag	n_pts	med_dy	med_dz	dr1	dr2	ra	dec	mean_y	mean_z
0	FID	ACIS-S-2	7.10	4554	-0.081	-0.031	0.011	0.021	0.000000	0.000000	-767.23	-1736.44
1	FID	ACIS-S-4	7.19	4555	0.208	0.048	0.007	0.011	0.000000	0.000000	2146.22	171.92
2	FID	ACIS-S-5	7.22	4555	-0.158	-0.007	0.009	0.016	0.000000	0.000000	-1819.89	165.75
3	GUIDE	504890776	9.26	9096	-0.058	0.275	0.103	0.168	211.095934	54.816966	973.49	-2047.84
4	GUIDE	505289928	8.82	9104	0.090	-0.079	0.081	0.128	210.255792	55.424933	727.21	730.34
5	GUIDE	505289936	8.66	9108	0.026	0.031	0.075	0.118	211.265099	55.244504	2101.44	-943.98
6	GUIDE	505291072	9.29	9077	-0.290	0.092	0.087	0.140	210.560044	55.882003	2149.87	1762.45
7	GUIDE	505292496	8.95	9087	0.228	-0.321	0.099	0.157	209.901938	55.817977	915.15	2306.56

2.4 Star Slots

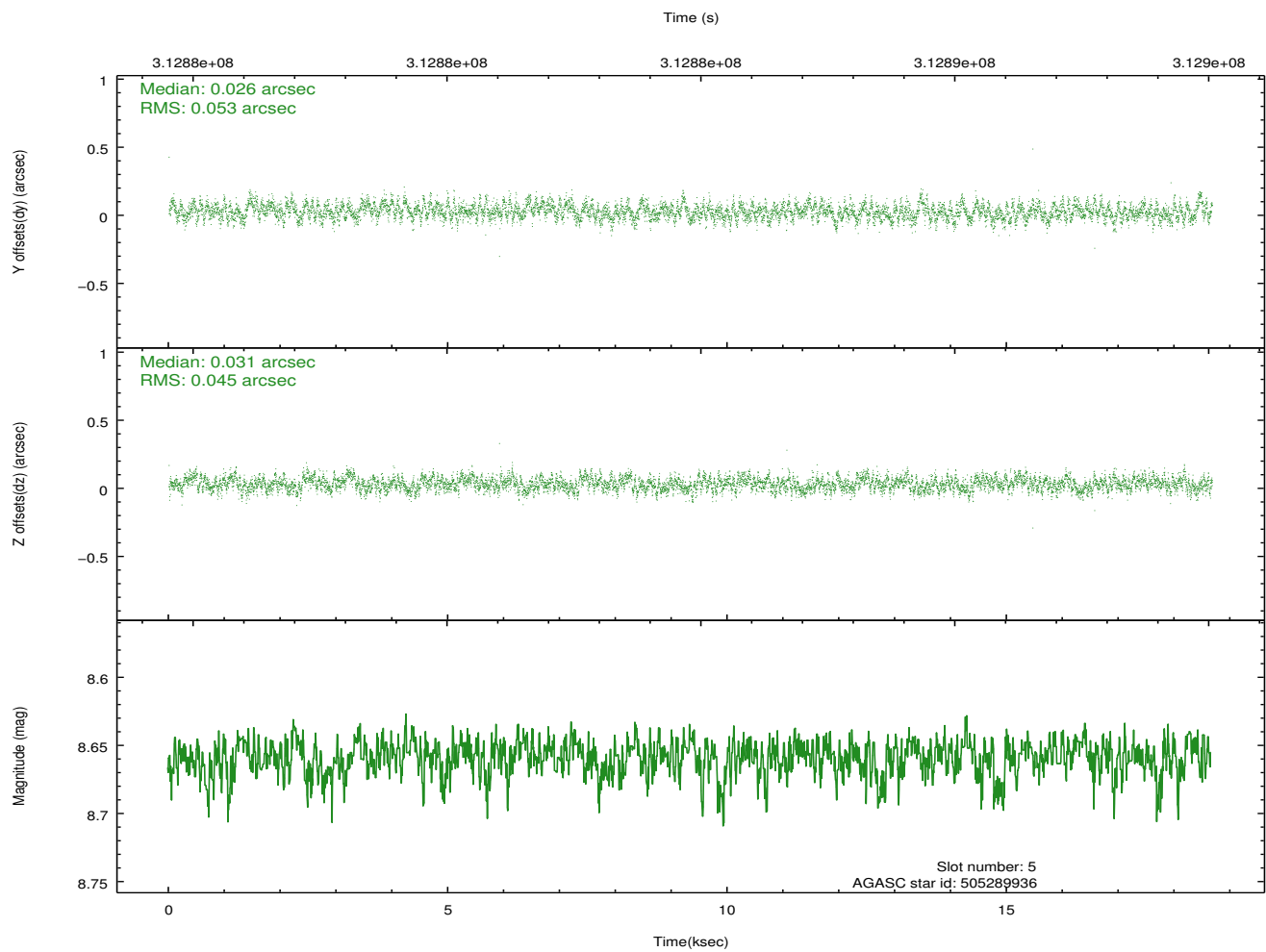
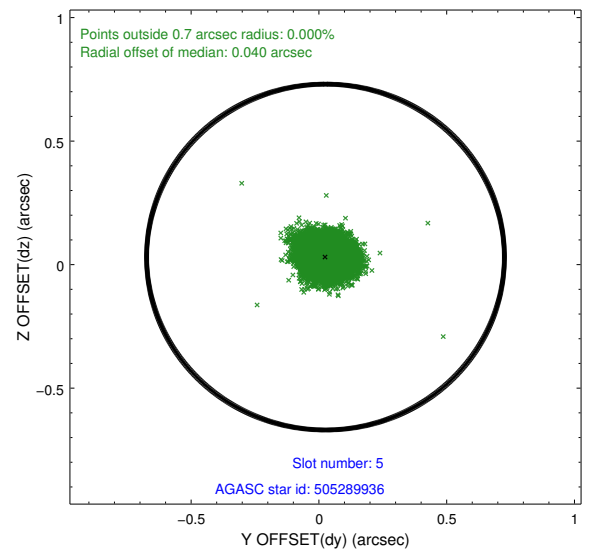
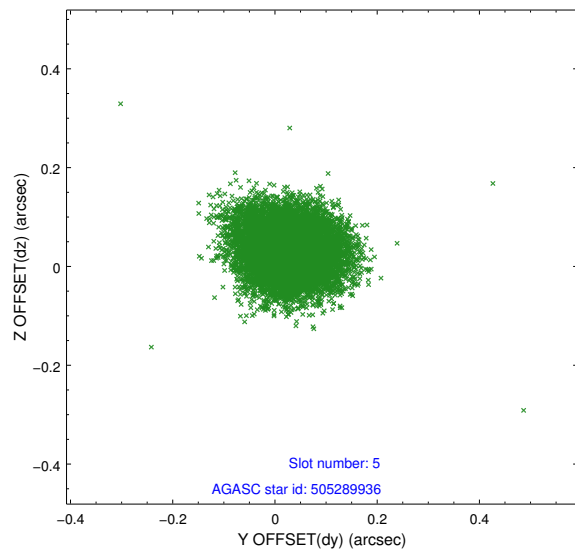
2.4.1 Slot 3



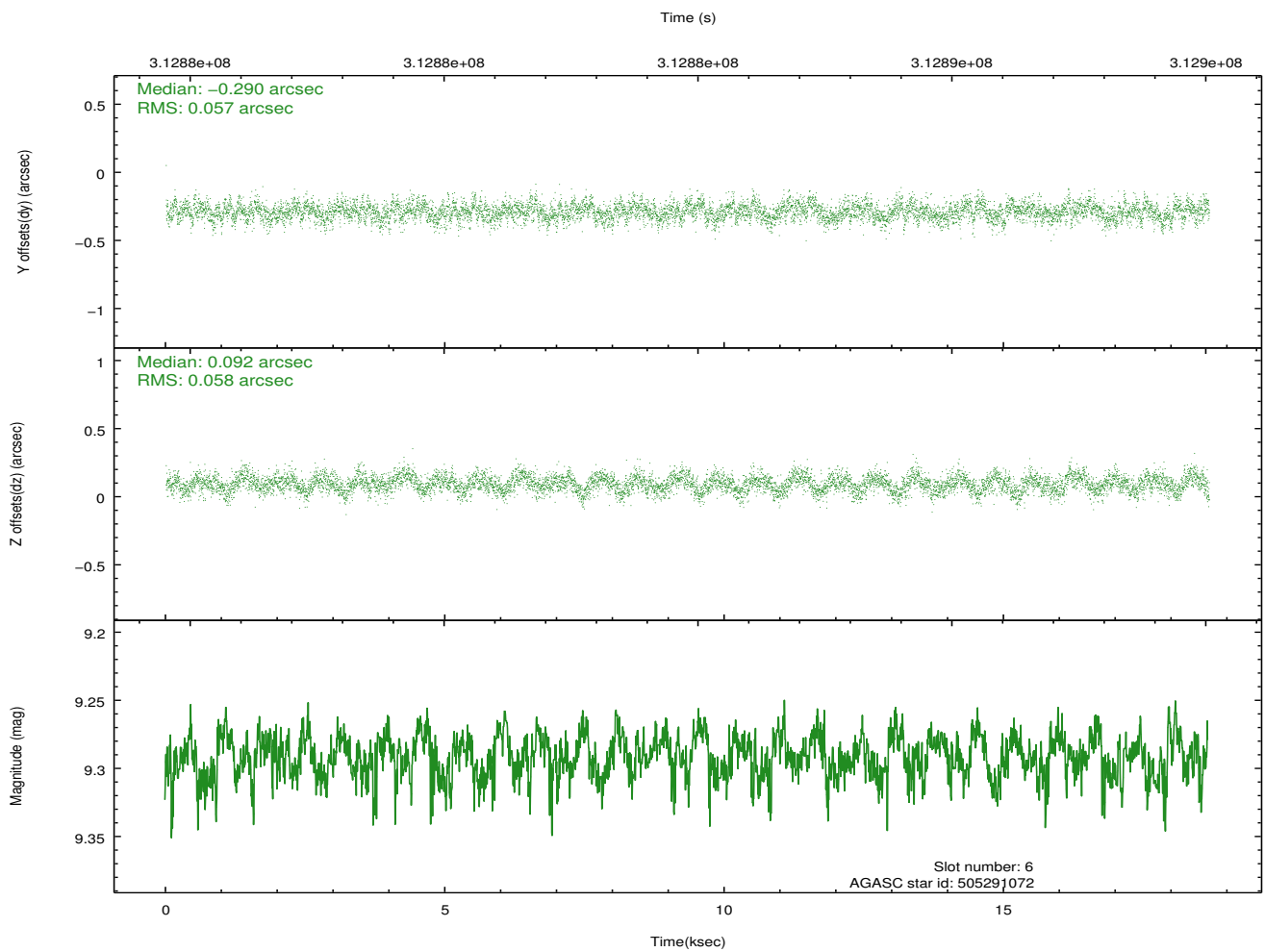
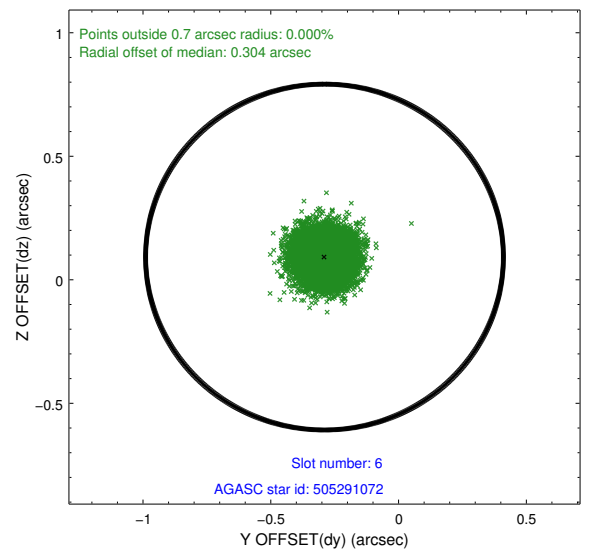
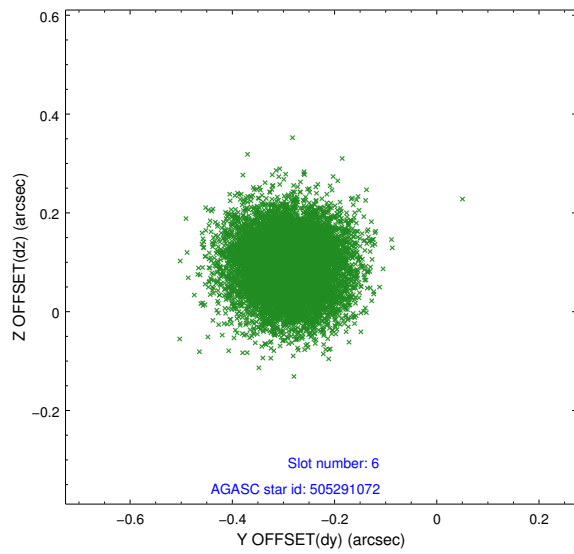
2.4.2 Slot 4



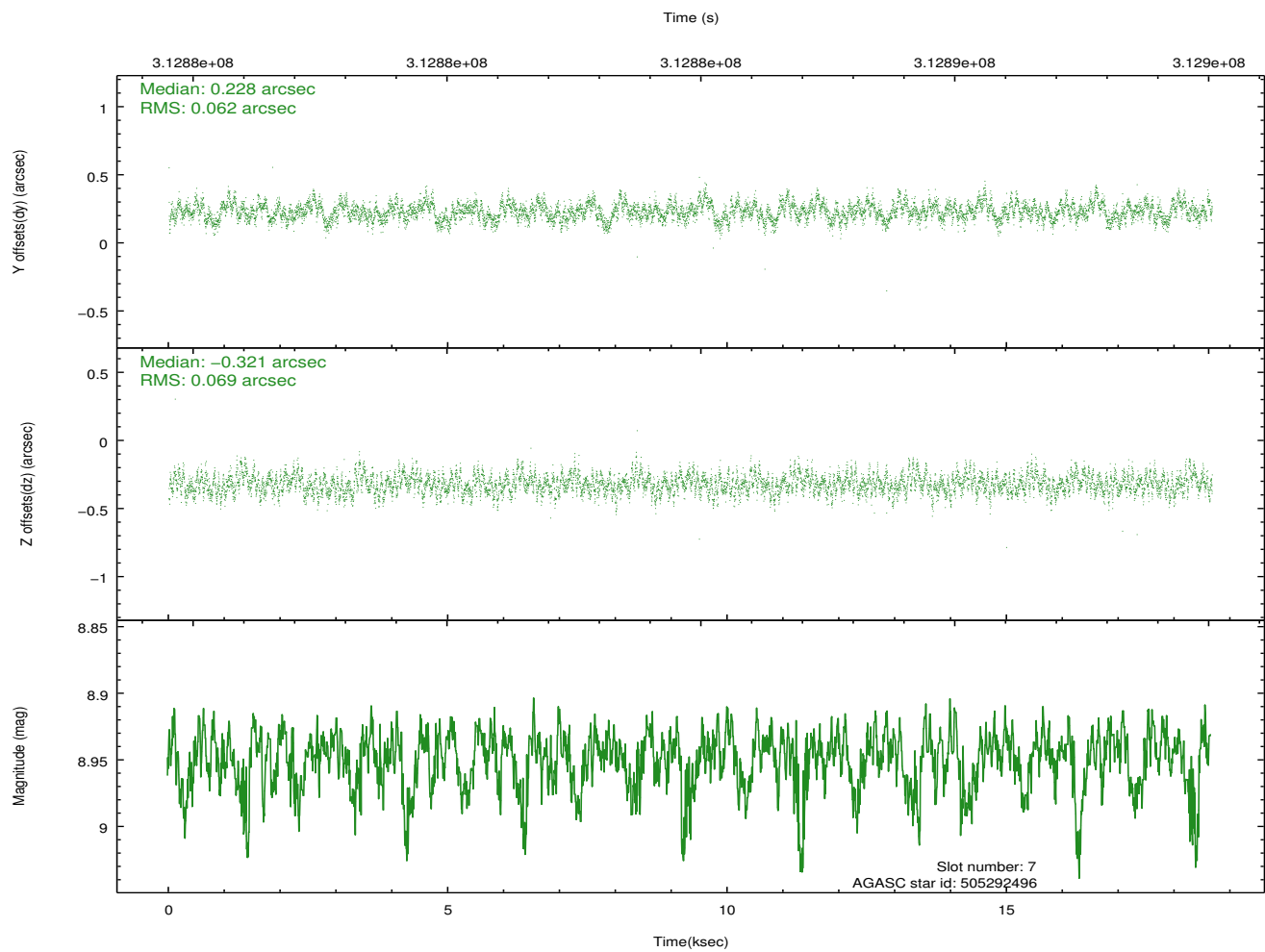
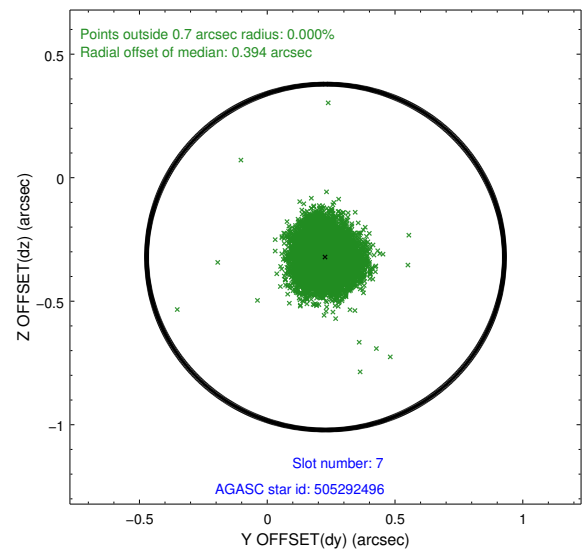
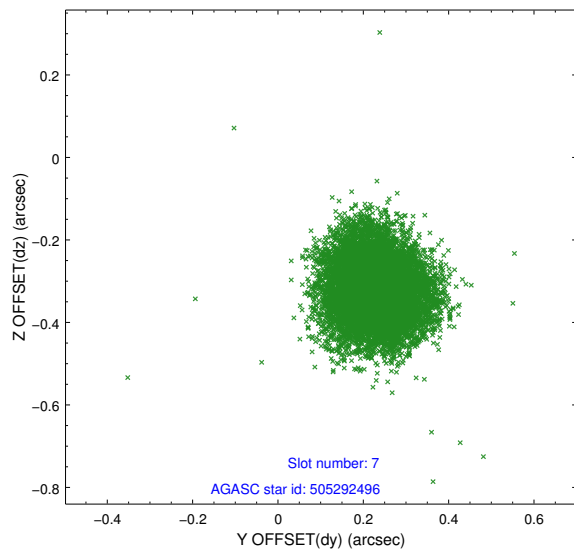
2.4.3 Slot 5



2.4.4 Slot 6

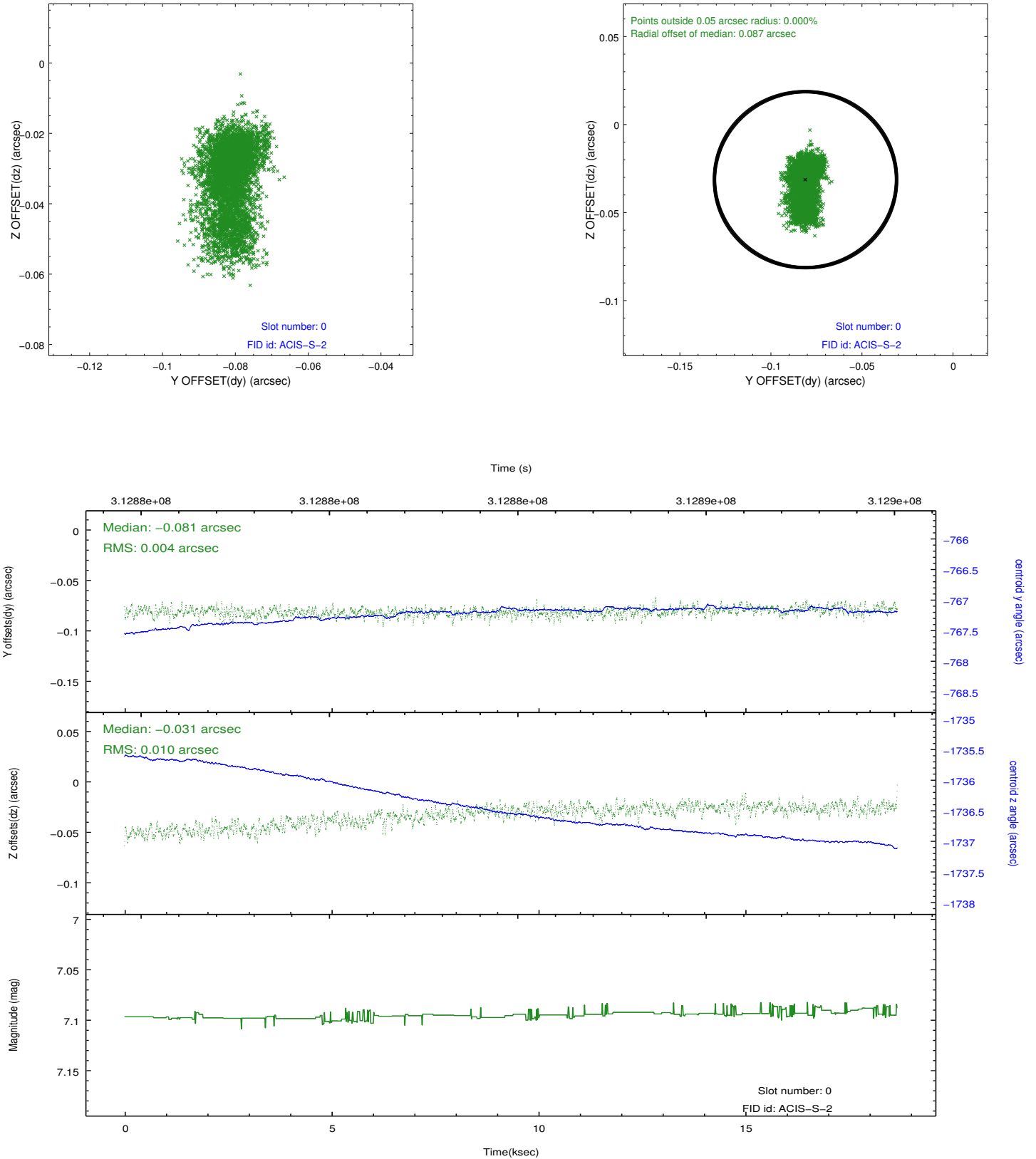


2.4.5 Slot 7

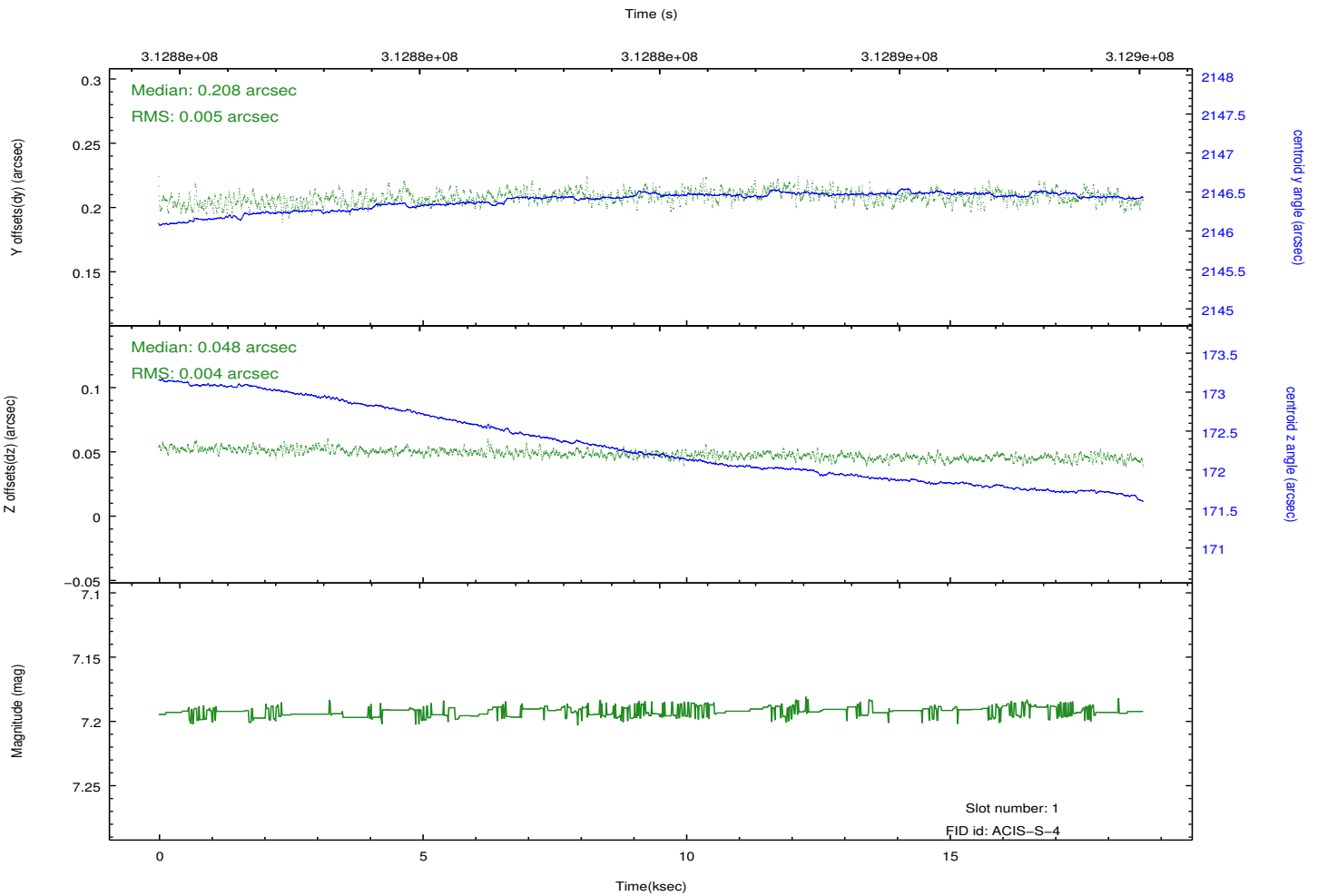
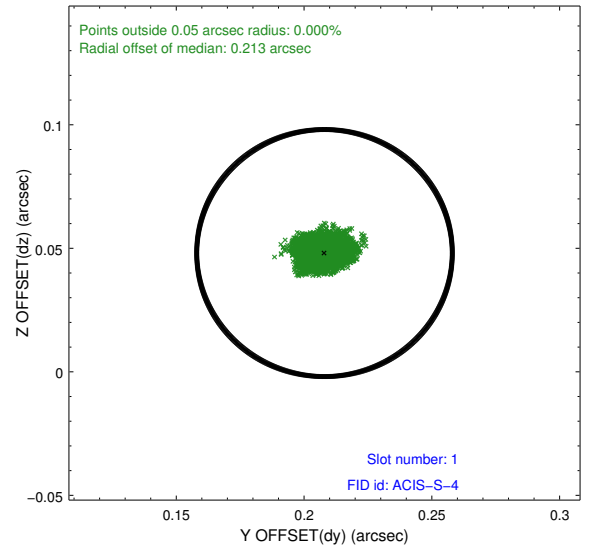
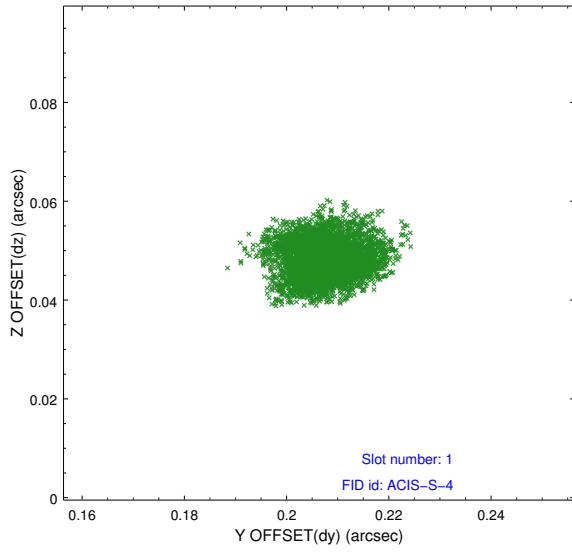


2.5 FID Slots

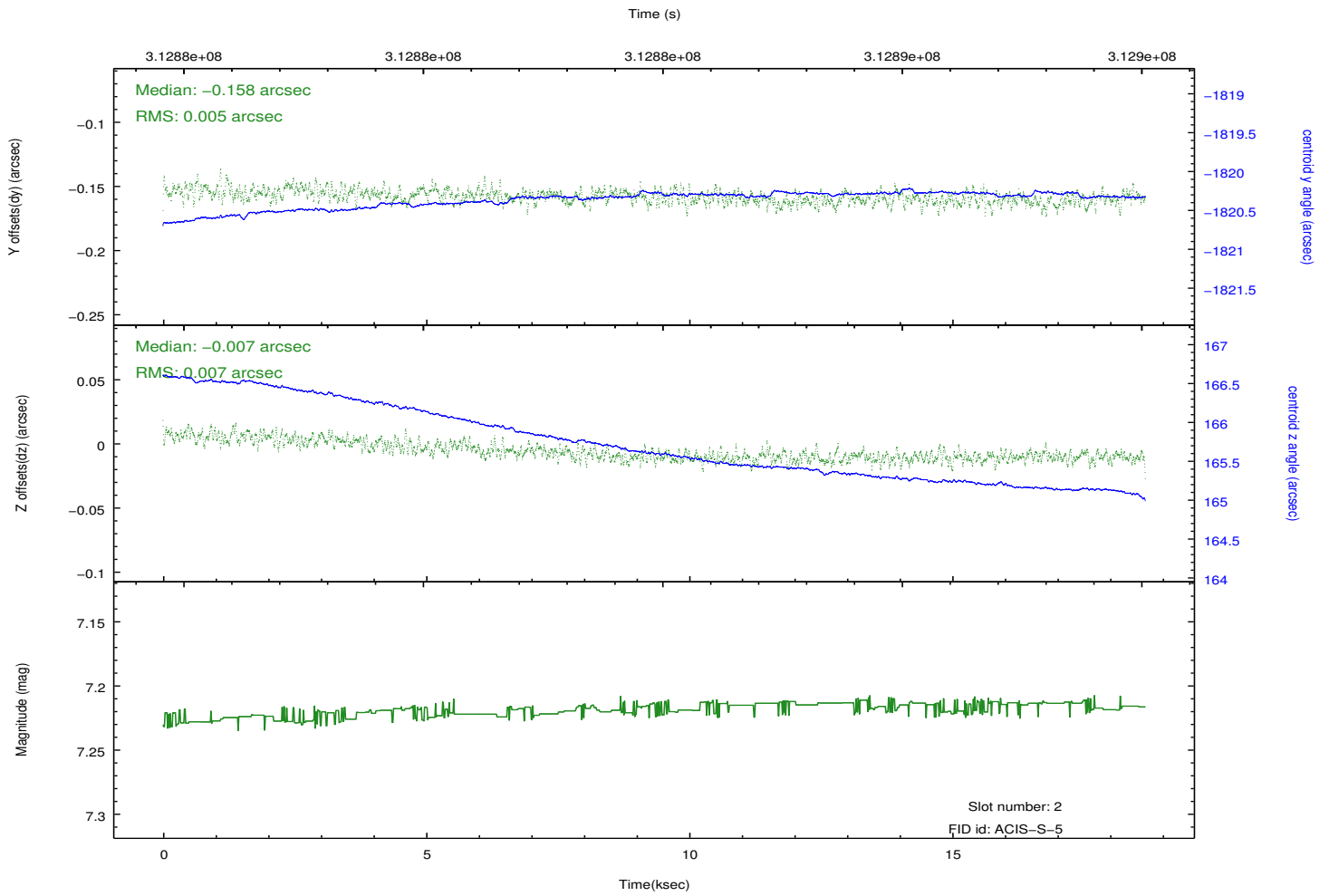
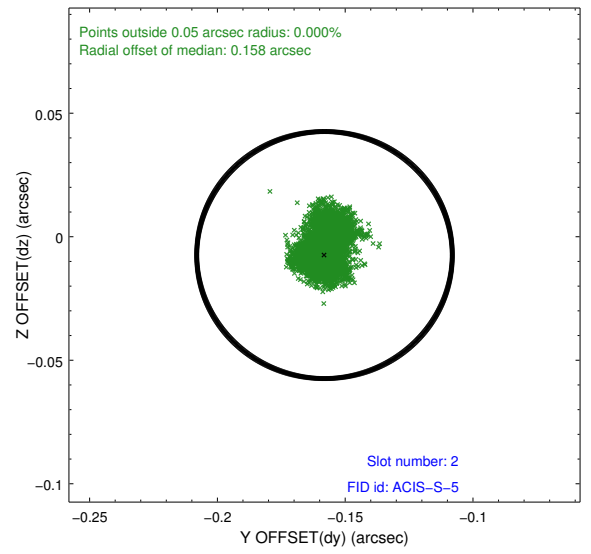
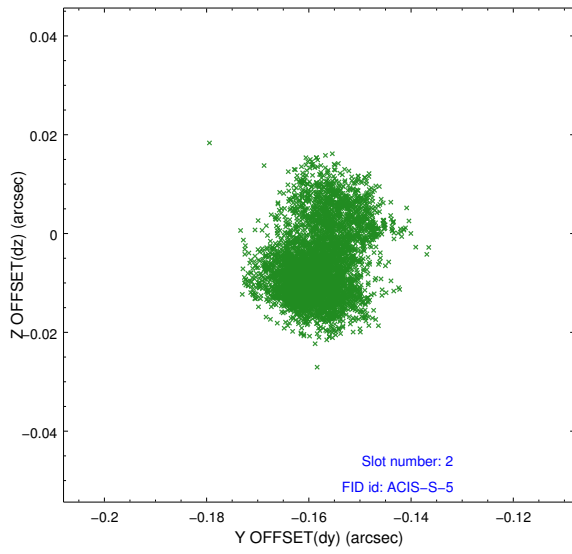
2.5.1 Slot 0



2.5.2 Slot 1



2.5.3 Slot 2



A Summary

A.1 Status

V&V Scientist	Jen Lauer
V&V Date (YYYY-MM-DD)	2012.05.07
V&V Edition	1
V&V Disposition and Status	OK
V&V Charge Time	18.6372001

A.2 Comments