

V&V Reference Report

L2 ASCDS Version : 8.4.5

Observation 9922 - L2 Version 2
Chandra X-Ray Center

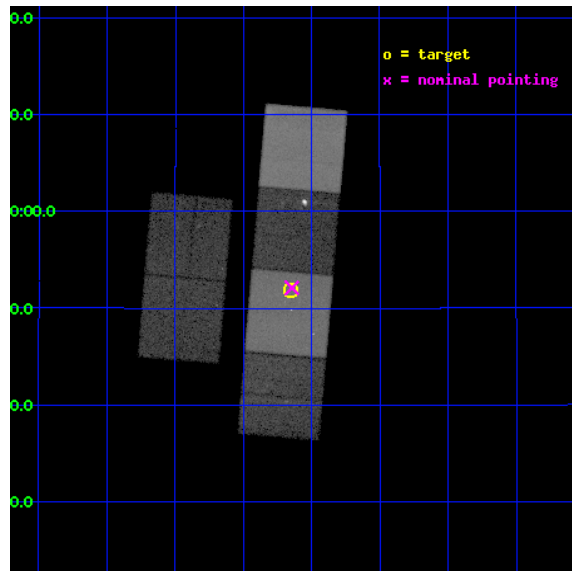
L2 Processing Date : Jun 15 2012

Contents

1	Front	2
2	OBI	3
2.1	OBI	3
2.1.1	Images	3
2.1.2	Bias	3
2.1.3	Parameters	4
2.1.4	Events	4
2.2	Compared Parameters	5
2.3	Aspect	6
2.4	Star Slots	9
2.4.1	Slot 3	9
2.4.2	Slot 4	10
2.4.3	Slot 5	11
2.4.4	Slot 6	12
2.4.5	Slot 7	13
2.5	FID Slots	14
2.5.1	Slot 0	14
2.5.2	Slot 1	15
2.5.3	Slot 2	16
A	Summary	17
A.1	Status	17
A.2	Comments	17

1 Front

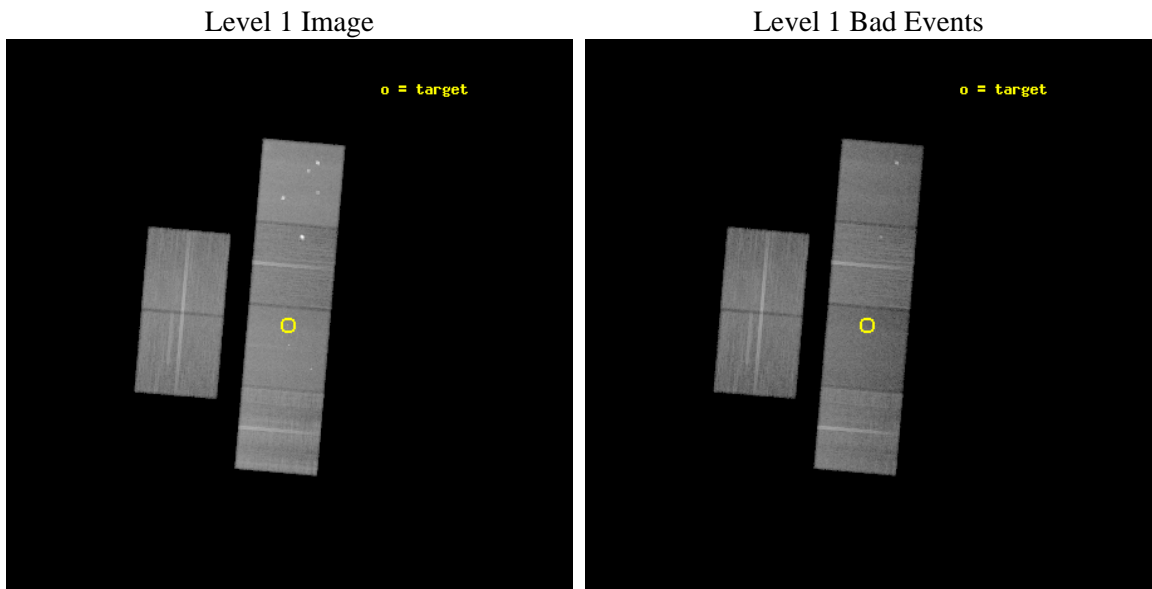
seq_num	200538	Sequence number
obs_id	9922	Observation id
title	Imaging X-Ray Microjets from T Tauri Stars	Proposal title
observer	Prof. Manuel Guedel	Principal investigator
object	HN Tau	Source name
dtcycle	0	
cycle	P	events from which exps? Prim/Second/Both
ra_targ	68.414167	Observer's specified target RA [deg]
dec_targ	17.864528	Observer's specified target Dec [deg]
ra_nom	68.411130669542	Nominal RA [deg]
dec_nom	17.868434184397	Nominal Dec [deg]
roll_nom	94.929372230674	Nominal Roll [deg]
revision	2	Processing version of data
ontime	27855.999896288	Sum of GTIs [s]
livetime	27503.270452732	Livetime [s]
ontime2	27855.999896288	Sum of GTIs [s]
ontime3	27855.999896288	Sum of GTIs [s]
ontime5	27855.999896288	Sum of GTIs [s]
ontime6	27855.999896288	Sum of GTIs [s]
ontime7	27855.999896288	Sum of GTIs [s]
ontime8	27855.999896288	Sum of GTIs [s]
l2events	390409	Number of level 2 events



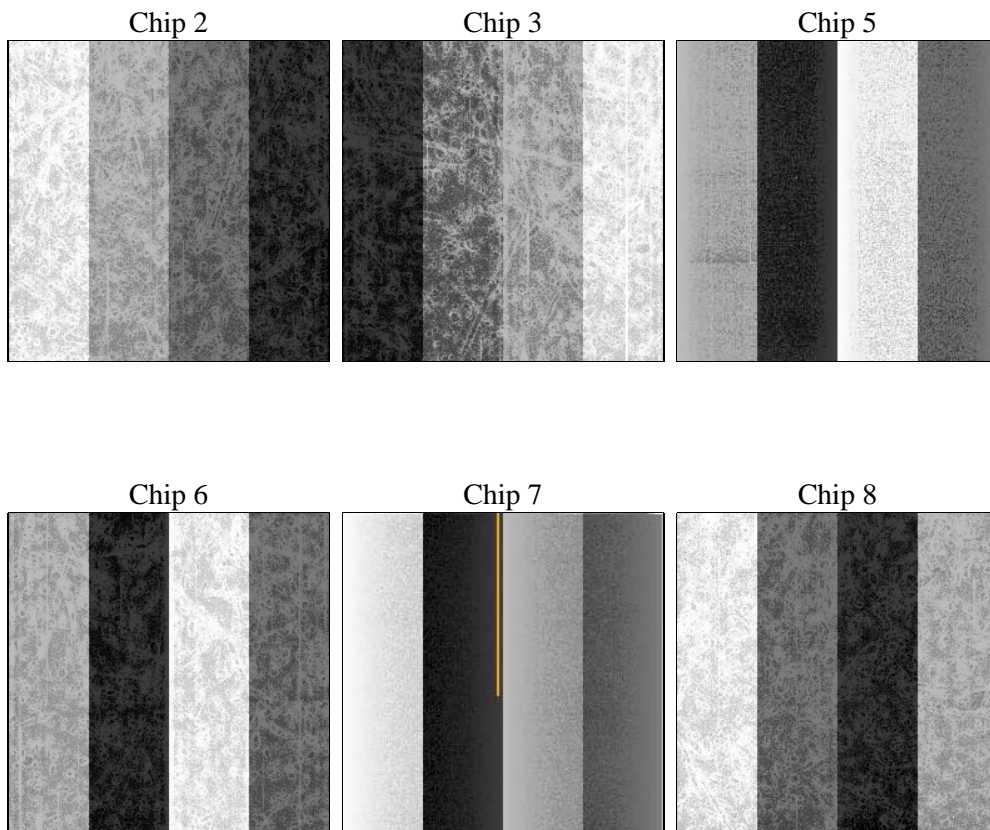
2 OBI

2.1 OBI

2.1.1 Images



2.1.2 Bias



2.1.3 Parameters

obi_num	2	Obi number	sched_exp_time	27820.695000	[s] Scheduled observation exposure time
ascdsver	8.4.5	Processing system revision	ontime	27855.999896288	Sum of GTIs [s]
caldbver	4.4.10	 	ontime2	27855.999896288	Sum of GTIs [s]
date	2012-06-15T13:36:36	Date and time of file creation	ontime3	27855.999896288	Sum of GTIs [s]
revision	2	Processing version of data	ontime5	27855.999896288	Sum of GTIs [s]
			ontime6	27855.999896288	Sum of GTIs [s]
			ontime7	27855.999896288	Sum of GTIs [s]
			ontime8	27855.999896288	Sum of GTIs [s]
			l1events	1693954	Number of level 1 events

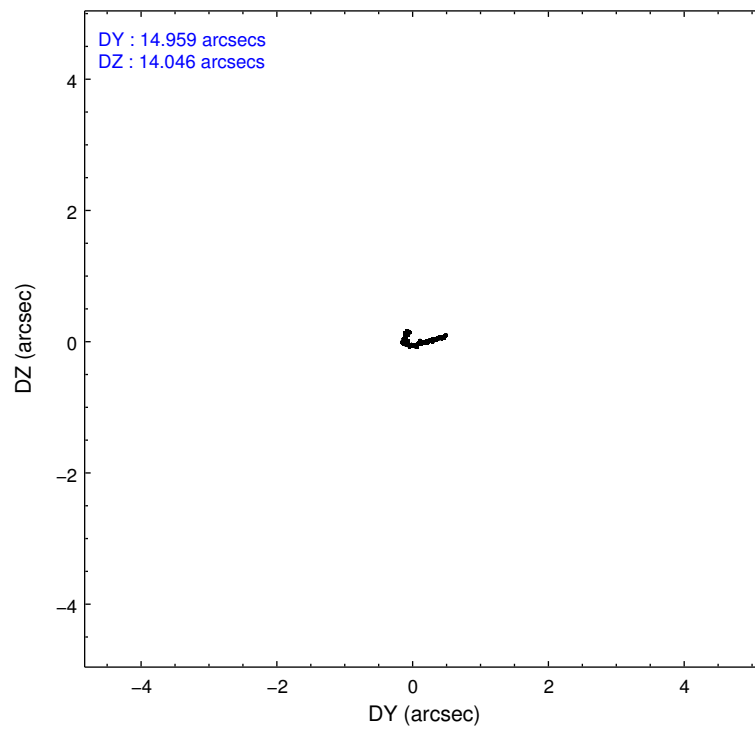
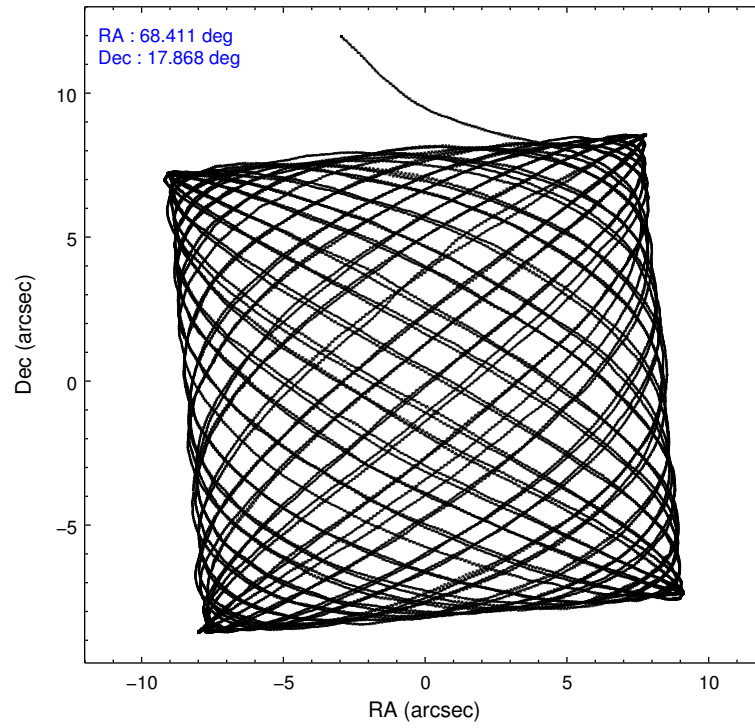
2.1.4 Events

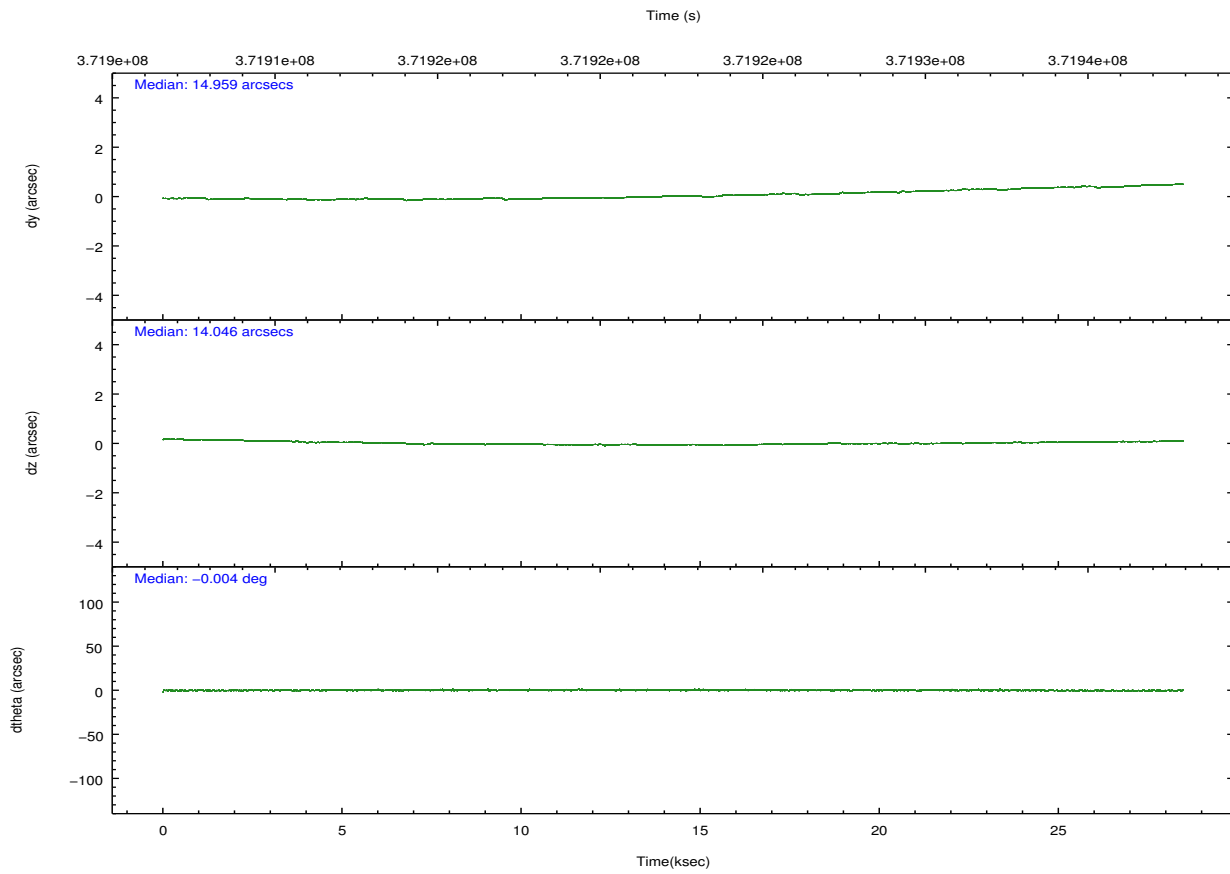
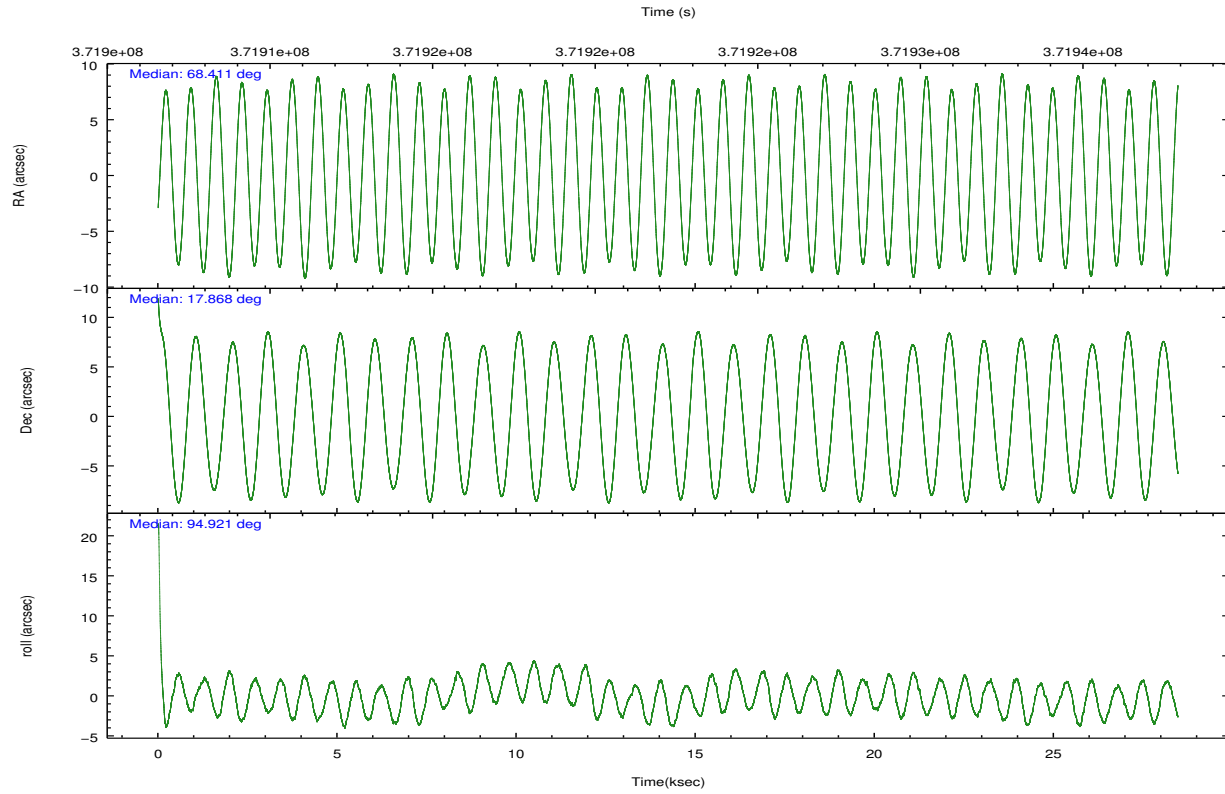
	ccd 2	ccd 3	ccd 5	ccd 6	ccd 7	ccd 8		ccd 2	ccd 3	ccd 5	ccd 6	ccd 7	ccd 8
level 1 events	256062	240537	355015	256542	279796	306002	grade 0 events	8610	8096	20525	22203	11739	21837
rejected events	231955	217630	176308	215250	152414	229700		3%	3%	5%	8%	4%	7%
rejected %	90%	90%	49%	83%	54%	75%	grade 1 events	145	140	801	261	382	247
								0%	0%	0%	0%	0%	0%
							grade 2 events	5943	4984	54464	7127	26083	18180
								2%	2%	15%	2%	9%	5%
							grade 3 events	2475	2602	6981	3067	11514	8100
								0%	1%	1%	1%	4%	2%
							grade 4 events	2561	2544	6601	3073	11324	7403
								1%	1%	1%	1%	4%	2%
							grade 5 events	8362	10122	27071	10254	29100	14579
								3%	4%	7%	3%	10%	4%
							grade 6 events	4520	4690	90204	5834	66751	20838
								1%	1%	25%	2%	23%	6%
							grade 7 events	223446	207359	148368	204723	122903	214818
								87%	86%	41%	79%	43%	70%

2.2 Compared Parameters

Parameter	Planned	Actual	Parameter	Planned	Actual
Instrument	ACIS	ACIS	Obspar format version number	7	7
Detector	ACIS-235678	ACIS-235678	Obspar file type	PREDICTED	ACTUAL
Grating	NONE	NONE	Obspar update status	NONE	UPDATED
Data mode	VFAINT	VFAINT	CCD I0 on	N	N
Observation mode	POINTING	POINTING	CCD I1 on	N	N
[deg] Pointing RA	68.427897	68.41113066954185	CCD I2 on	O1	Y
[deg] Pointing Dec	17.846221	17.86843418439699	CCD I3 on	O2	Y
[deg] Pointing Roll	94.767595	94.92937223067416	CCD S0 on	N	N
[mm] SIM focus pos	-0.684267	-0.6828225247311905	CCD S1 on	Y	Y
[mm] SIM defocus	0	0.001444936568705701	CCD S2 on	Y	Y
[mm] SIM translation stage pos	-190.132523	-190.1425803651734	CCD S3 on	Y	Y
[mm] SIM translation stage offset	0	0.01005778216563158	CCD S4 on	Y	Y
[s] Observation start time (MET)	371908658.184000	371907418.29455	CCD S5 on	N	N
Observation start date	2009-10-14T11:56:32	2009-10-14T11:36:58	Number of optional ACIS chips dropped	0	0
[s] Observation end time (MET)	371936478.184000	371936705.62103	On-chip summing requested	N	N
Observation end date	2009-10-14T19:40:12	2009-10-14T19:45:05	Subarray requested	NONE	NONE
Read mode	TIMED	TIMED	Alternating exposures requested	N	N
			[s] Primary exposure time	0.000000	3.2

2.3 Aspect



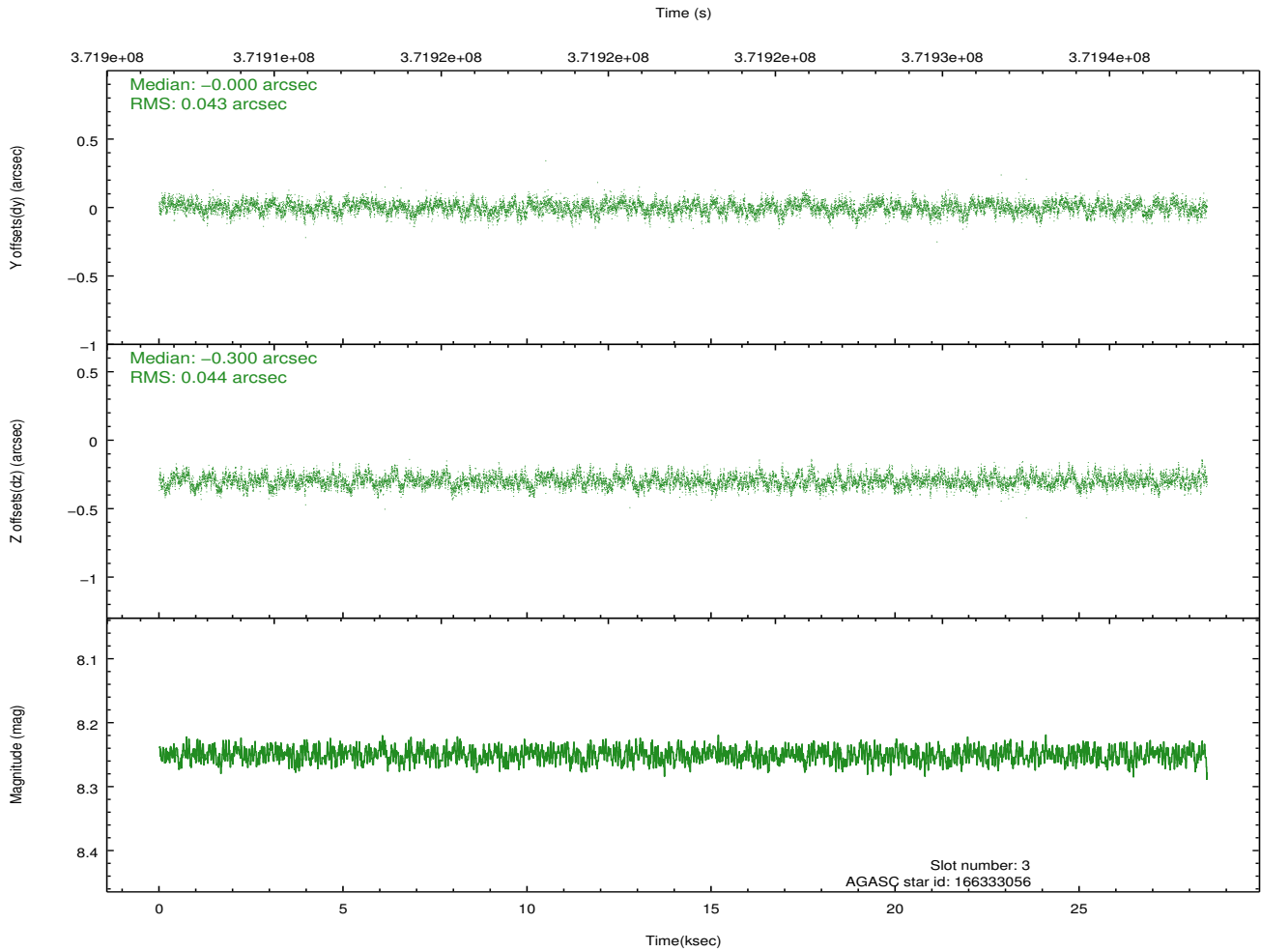
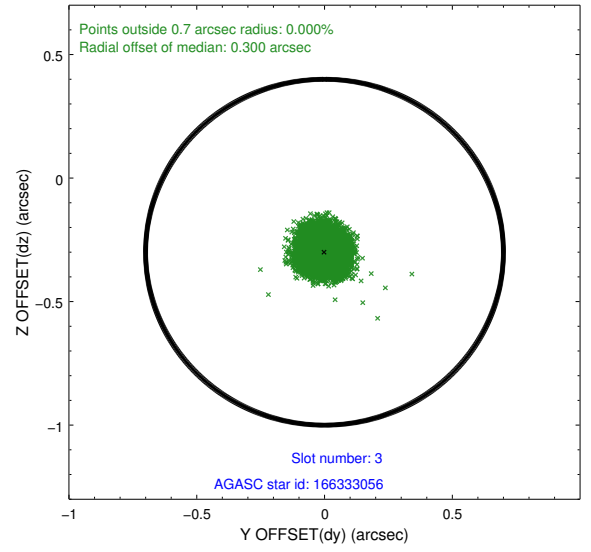
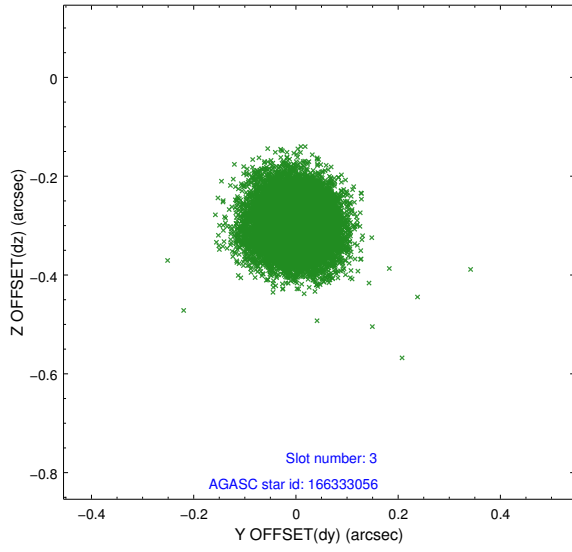


Slot Statistics

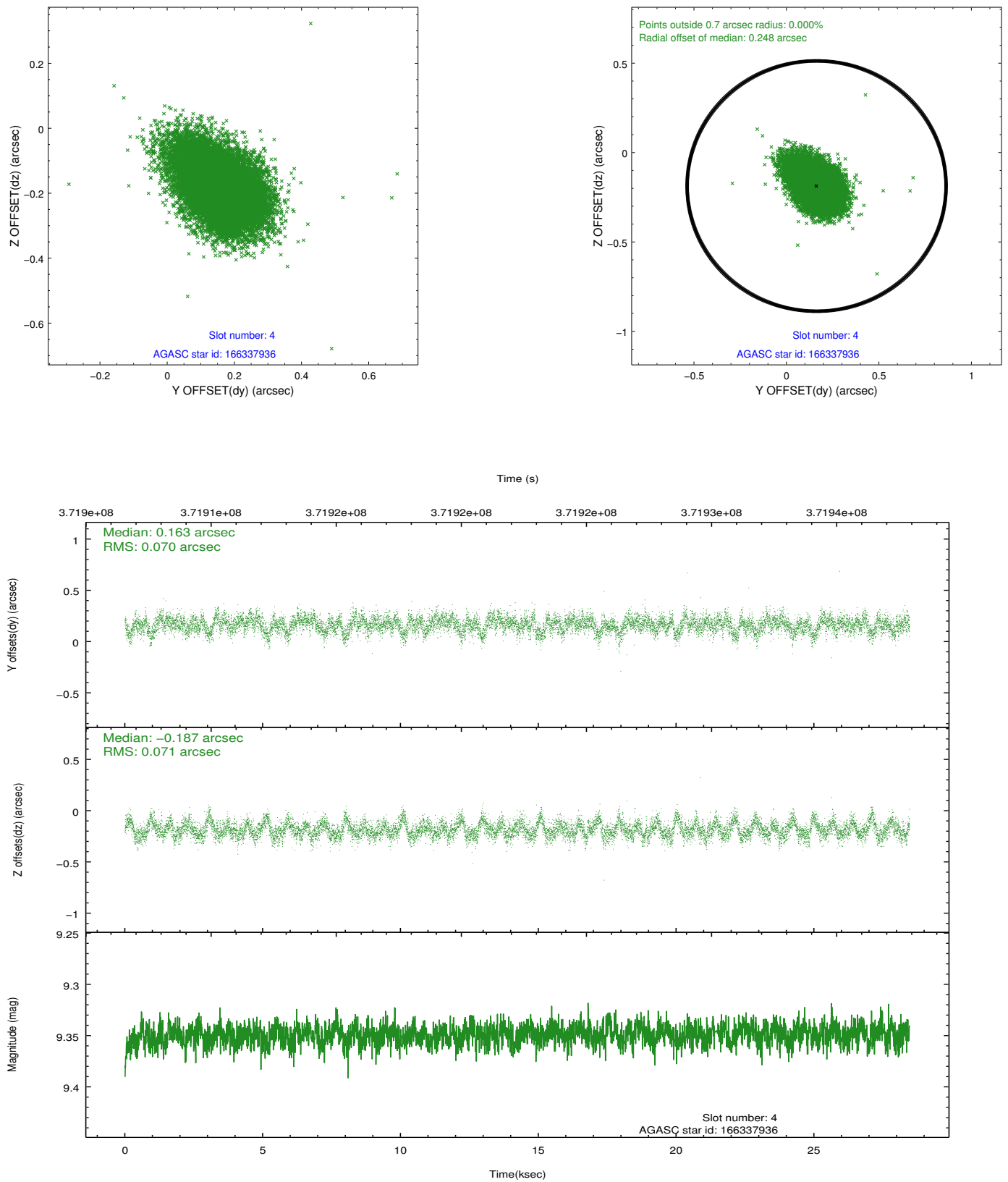
slot	status	id	mag	n_pts	med_dy	med_dz	dr1	dr2	ra	dec	mean_y	mean_z
0	FID	ACIS-S-2	6.93	6944	-0.079	-0.049	0.007	0.012	0.000000	0.000000	-768.08	-1735.41
1	FID	ACIS-S-4	7.01	6944	0.188	0.052	0.007	0.013	0.000000	0.000000	2145.43	173.08
2	FID	ACIS-S-5	7.04	6944	-0.141	0.006	0.009	0.016	0.000000	0.000000	-1820.87	166.81
3	GUIDE	166333056	8.25	13884	-0.000	-0.300	0.066	0.105	67.813257	17.557208	-858.27	2188.37
4	GUIDE	166337936	9.35	13875	0.163	-0.187	0.103	0.177	67.951045	17.208216	-2150.70	1824.99
5	GUIDE	166465472	8.35	13882	-0.019	0.151	0.069	0.112	68.719684	18.413404	1952.88	-1162.24
6	GUIDE	166467888	8.09	13882	0.188	0.070	0.073	0.117	68.675864	17.748180	-421.61	-818.40
7	GUIDE	166472048	8.61	13880	-0.329	0.265	0.079	0.127	69.128417	17.932418	114.49	-2416.73

2.4 Star Slots

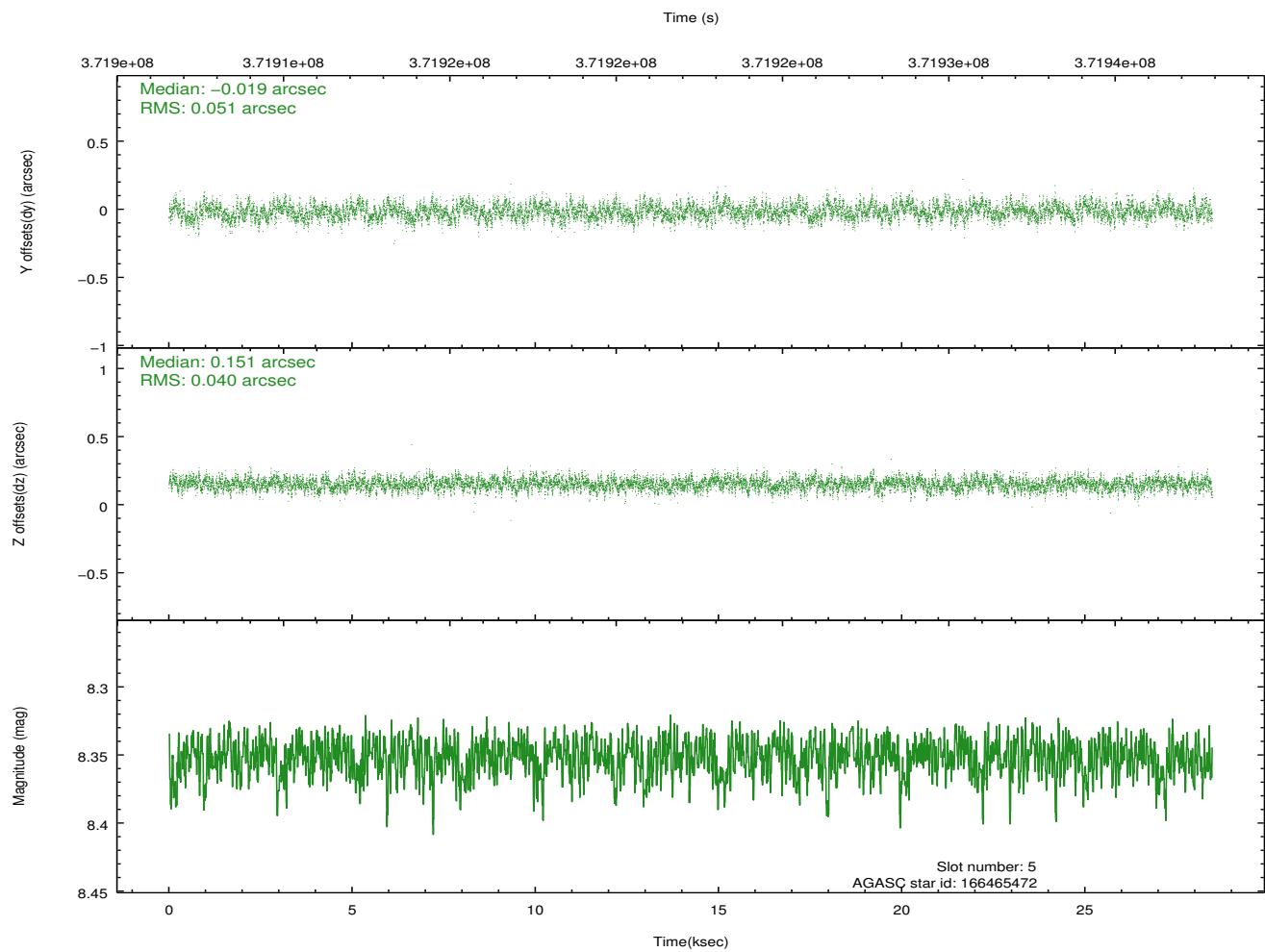
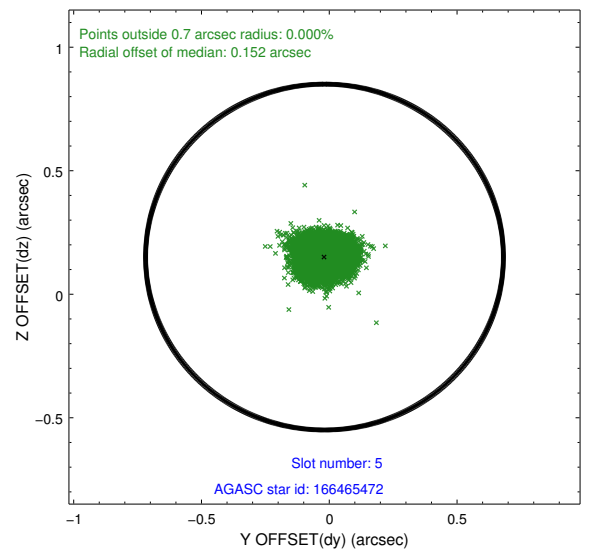
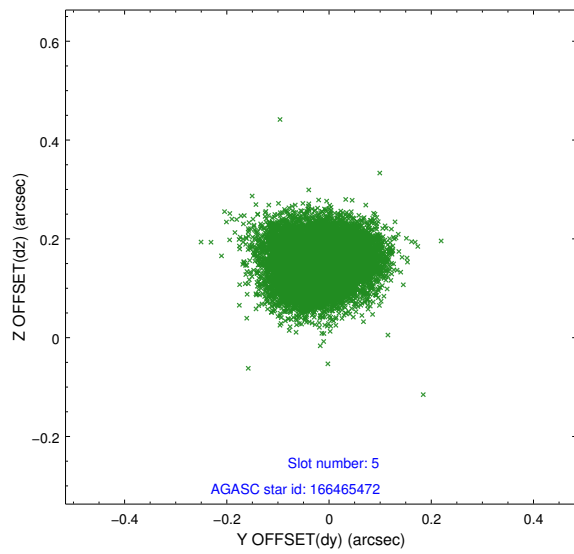
2.4.1 Slot 3



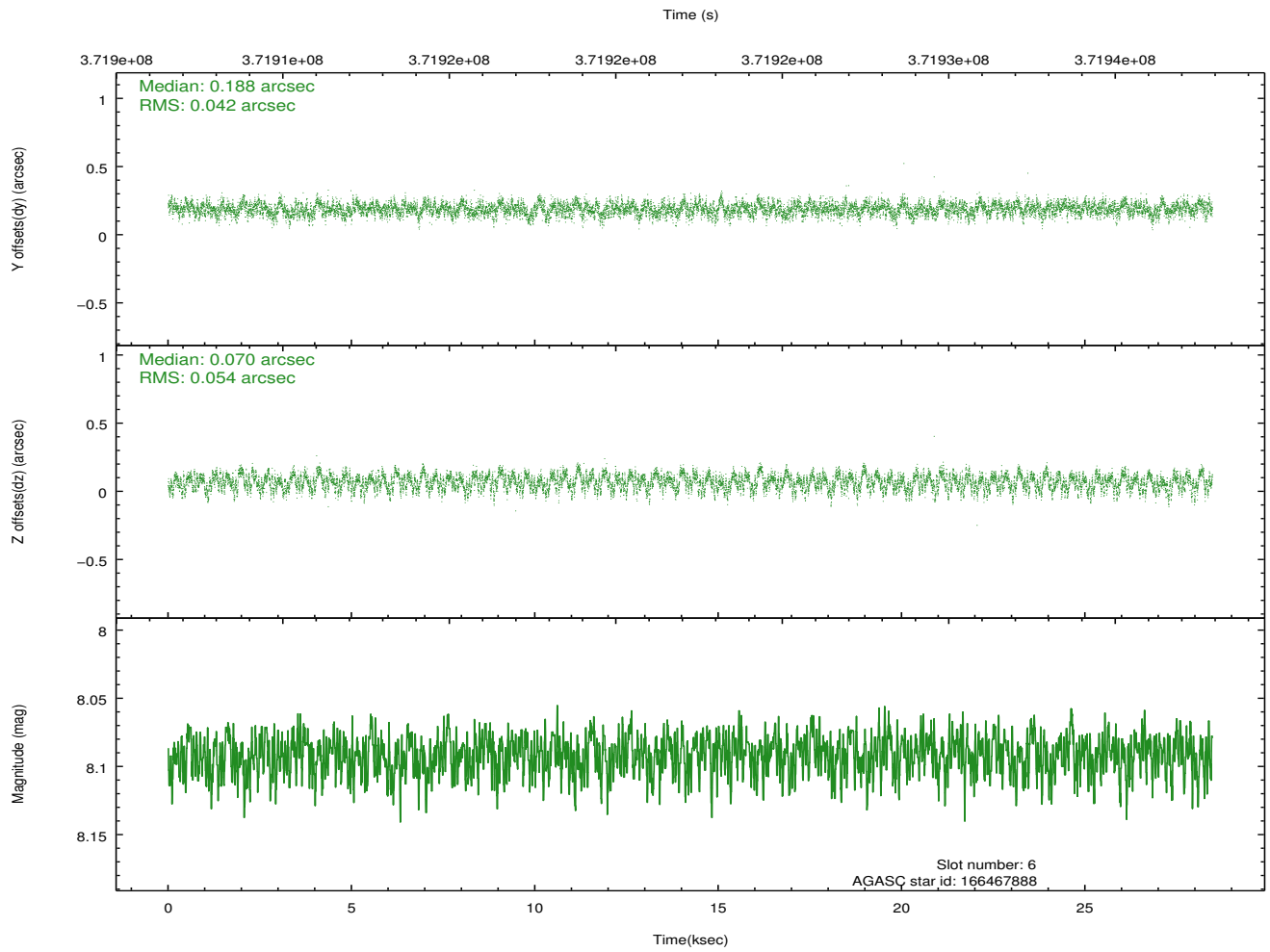
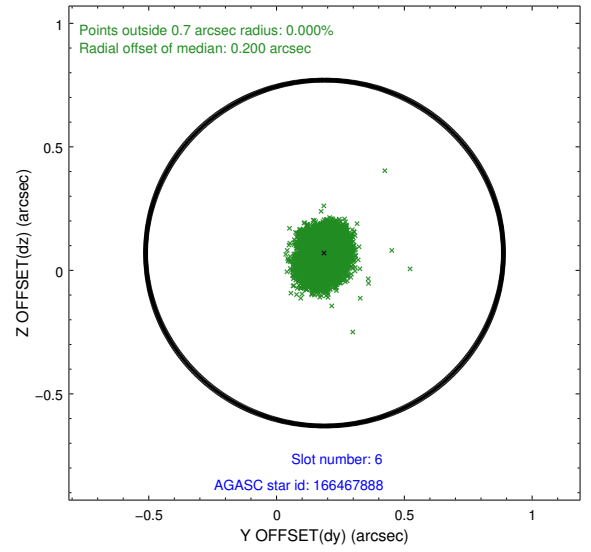
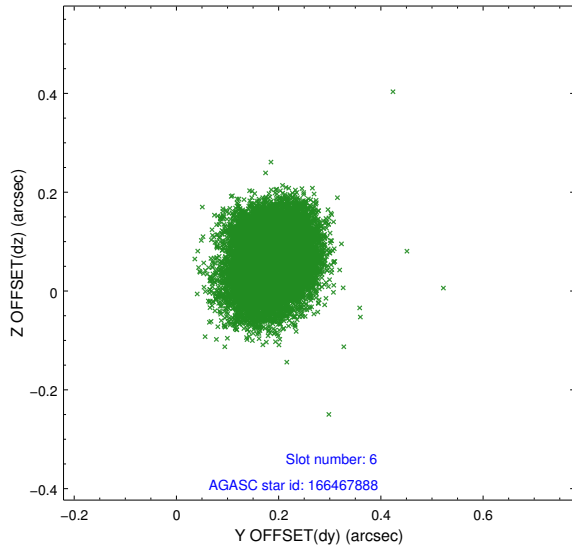
2.4.2 Slot 4



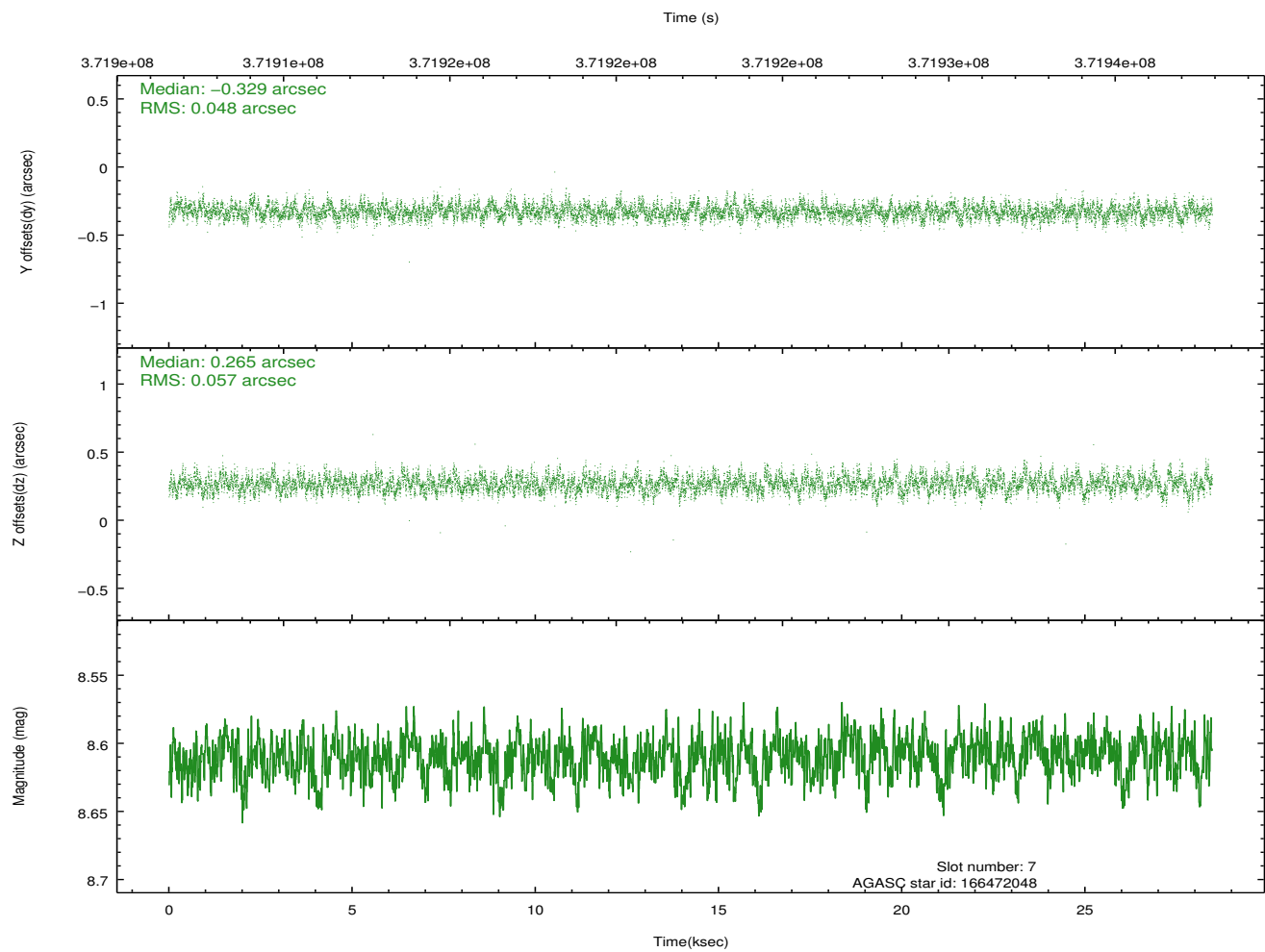
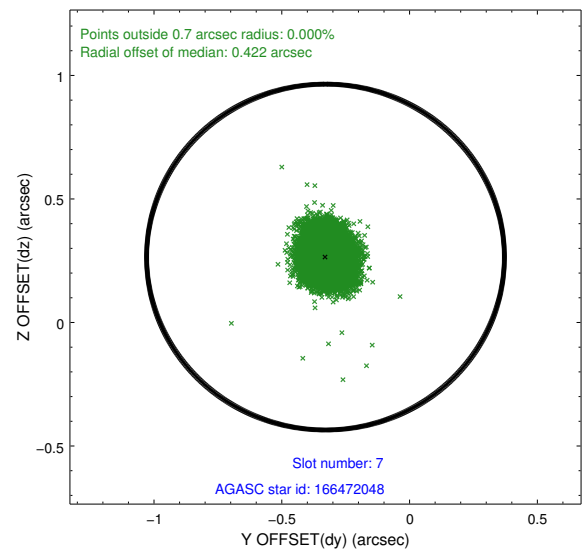
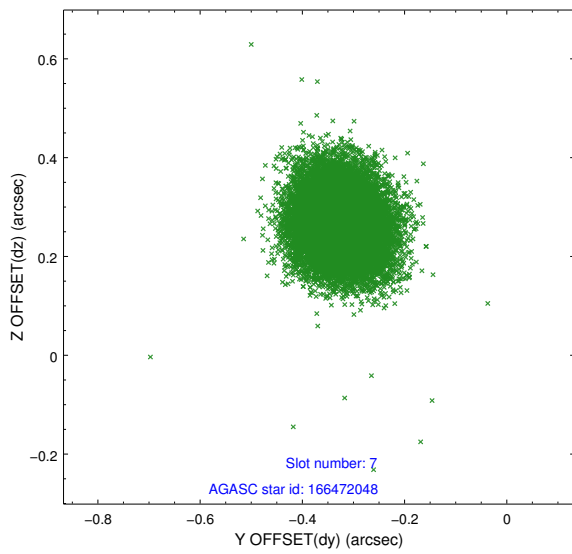
2.4.3 Slot 5



2.4.4 Slot 6

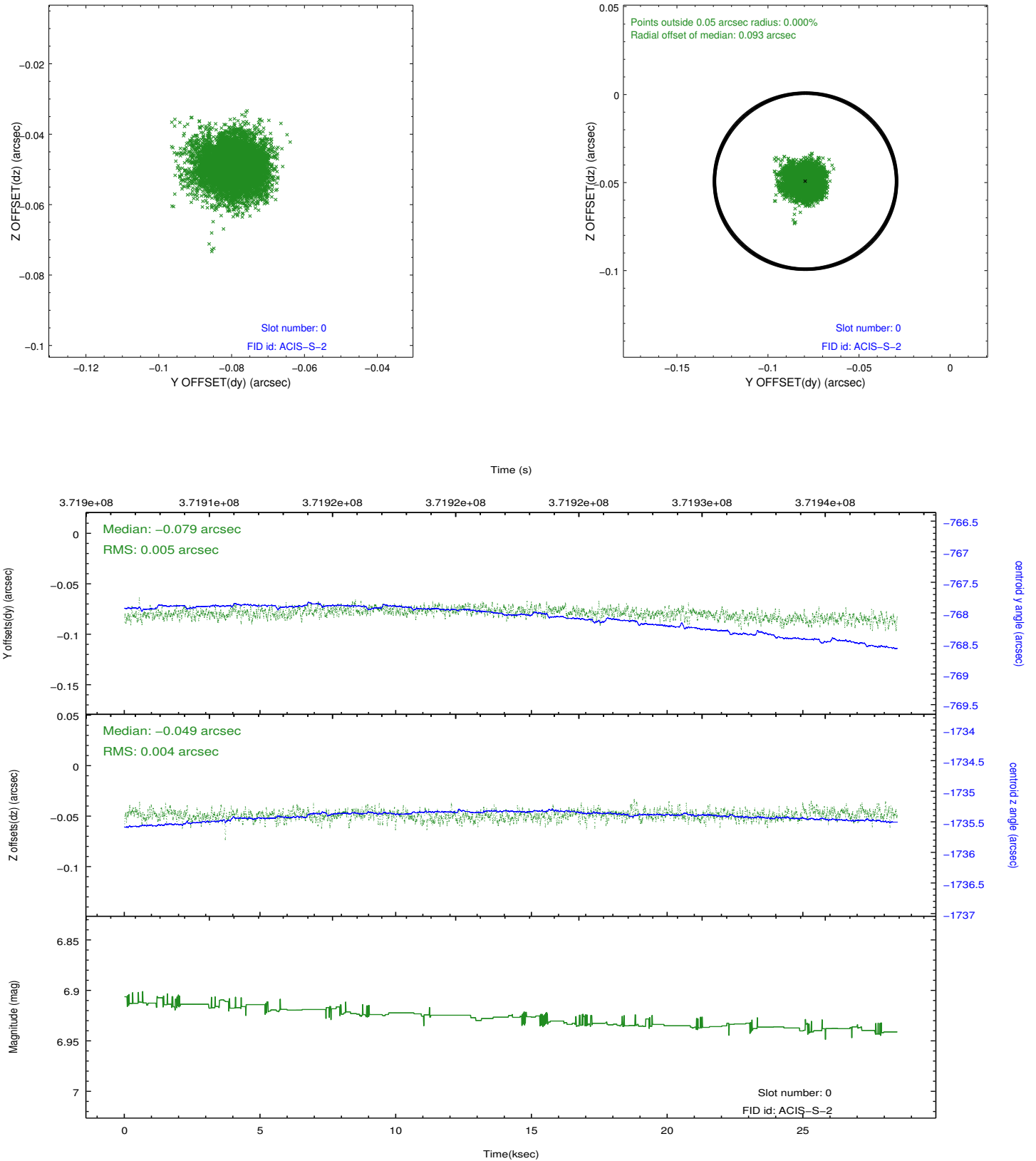


2.4.5 Slot 7

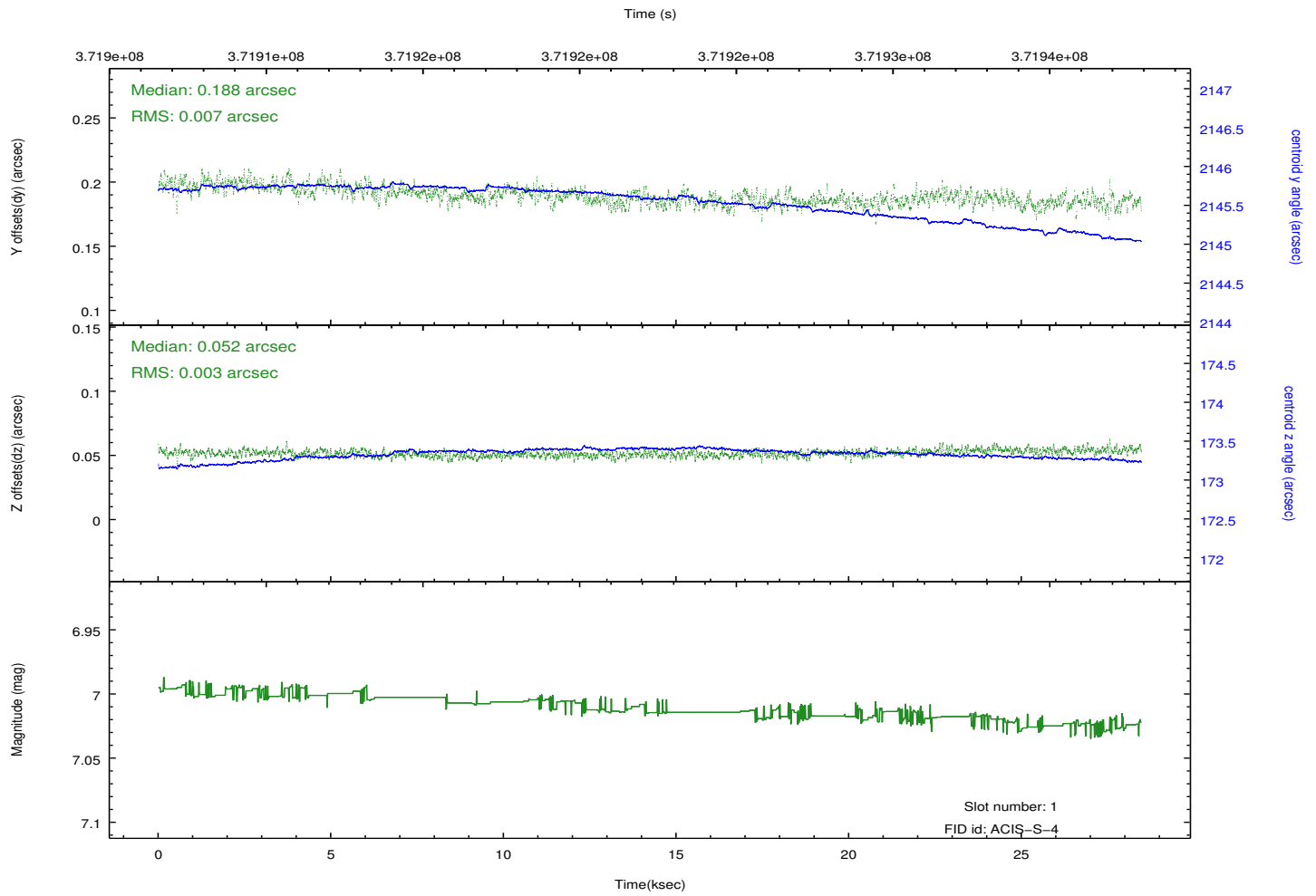
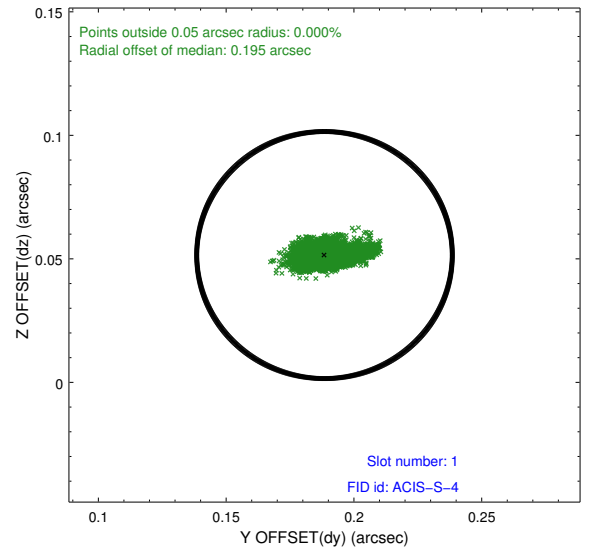
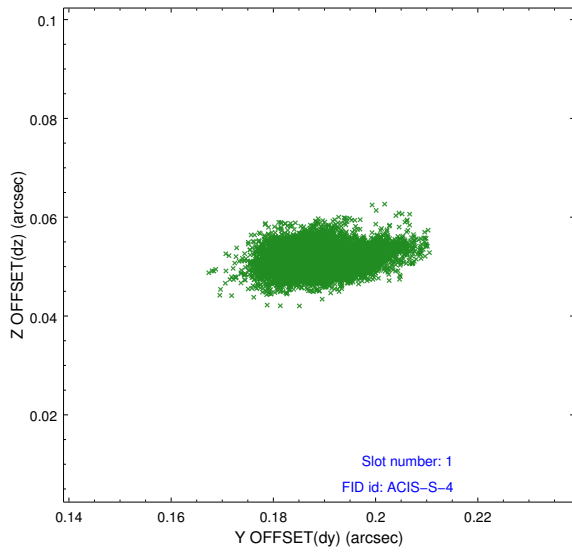


2.5 FID Slots

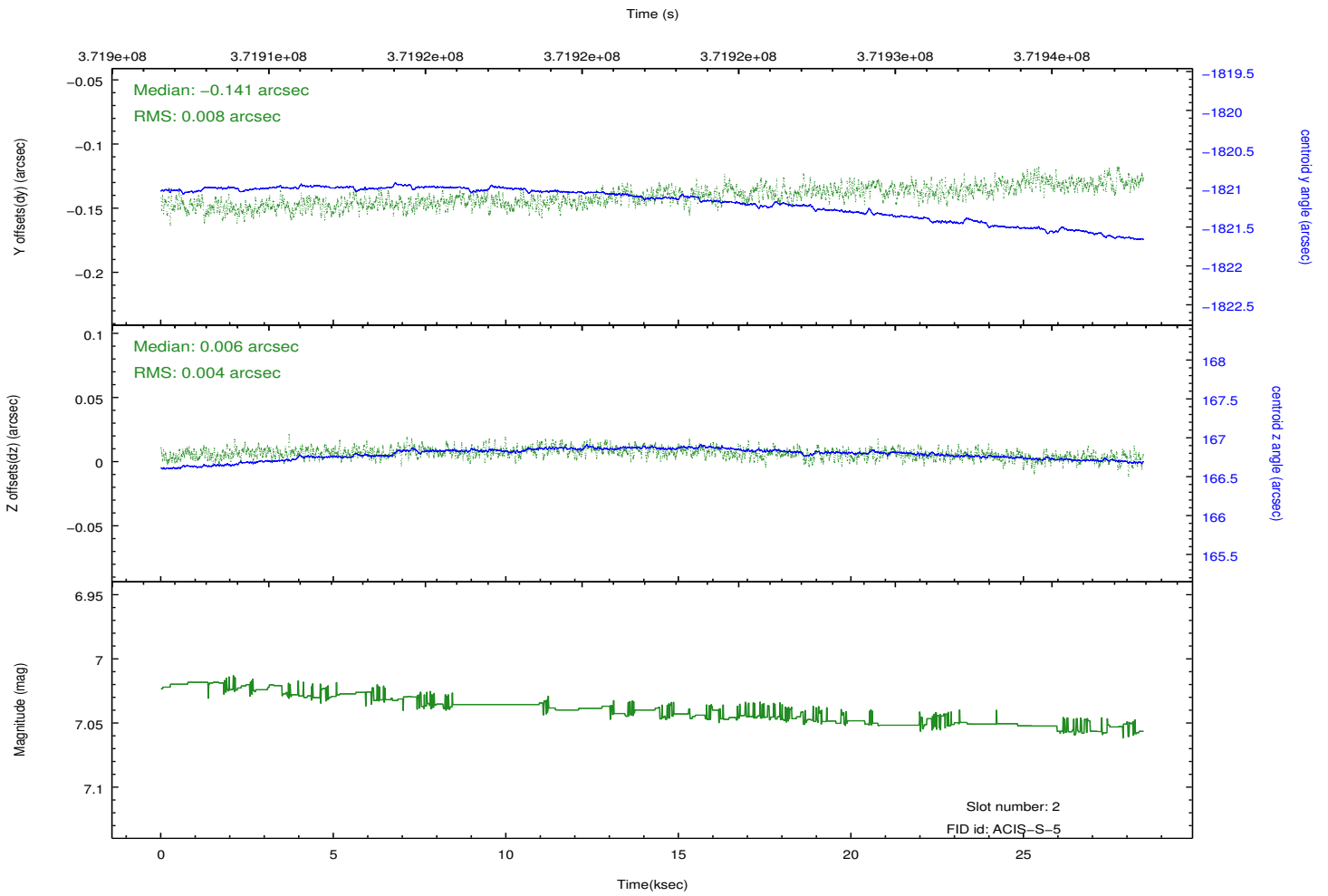
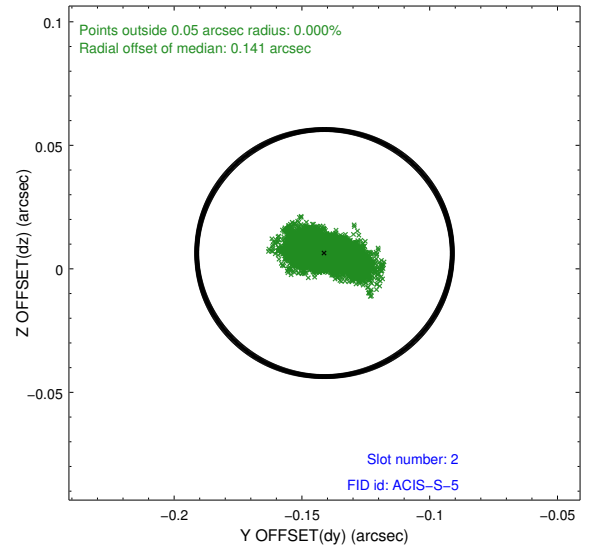
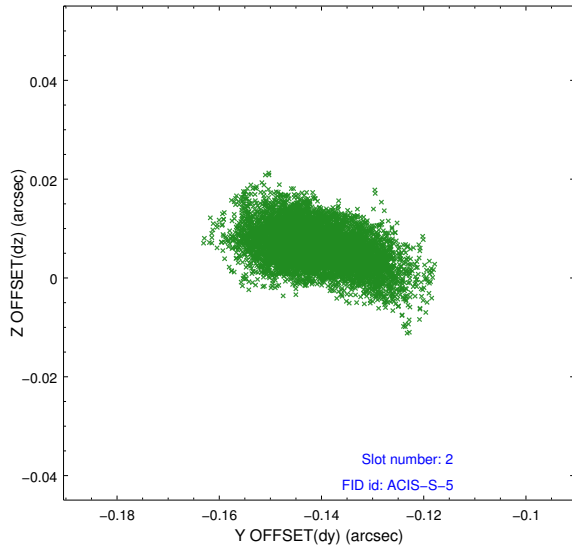
2.5.1 Slot 0



2.5.2 Slot 1



2.5.3 Slot 2



A Summary

A.1 Status

V&V Scientist	Jen Lauer
V&V Date (YYYY-MM-DD)	2012.06.19
V&V Edition	1
V&V Disposition and Status	OK
V&V Charge Time	27.855999896288

A.2 Comments