

V&V Reference Report

L2 ASCDS Version : 8.4.4

Observation 9932 - L2 Version 2
Chandra X-Ray Center

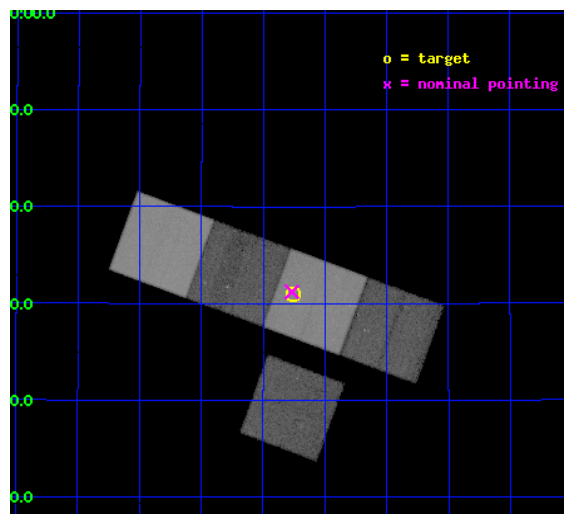
L2 Processing Date : May 30 2012

Contents

1	Front	2
2	OBI	3
2.1	OBI	3
2.1.1	Images	3
2.1.2	Bias	3
2.1.3	Parameters	4
2.1.4	Events	4
2.2	Compared Parameters	5
2.3	Aspect	6
2.4	Star Slots	9
2.4.1	Slot 3	9
2.4.2	Slot 4	10
2.4.3	Slot 5	11
2.4.4	Slot 6	12
2.4.5	Slot 7	13
2.5	FID Slots	14
2.5.1	Slot 0	14
2.5.2	Slot 1	15
2.5.3	Slot 2	16
A	Summary	17
A.1	Status	17
A.2	Comments	17

1 Front

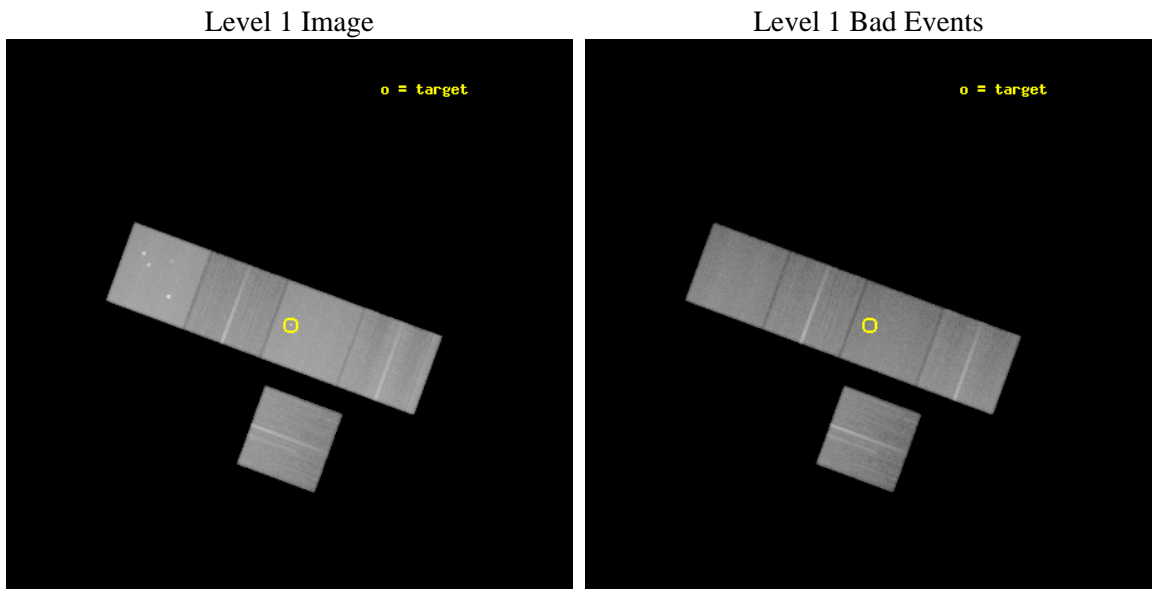
seq_num	200548	Sequence number
obs_id	9932	Observation id
title	Direct X-ray measurements of the expansion of planetary nebulae	Pr
observer	Young Sam Yu	Principal investigator
object	BD+303639	Source name
dtcycle	0	
cycle	P	events from which exps? Prim/Second/Both
ra_targ	293.688333	Observer's specified target RA [deg]
dec_targ	30.516361	Observer's specified target Dec [deg]
ra_nom	293.69181451938	Nominal RA [deg]
dec_nom	30.52017656979	Nominal Dec [deg]
roll_nom	20.154852651488	Nominal Roll [deg]
revision	2	Processing version of data
ontime	38055.600292683	Sum of GTIs [s]
livetime	37558.375858733	Livetime [s]
ontime3	38052.459332287	Sum of GTIs [s]
ontime5	38055.600292683	Sum of GTIs [s]
ontime6	38055.600292683	Sum of GTIs [s]
ontime7	38055.600292683	Sum of GTIs [s]
ontime8	38052.459332287	Sum of GTIs [s]
l2events	636226	Number of level 2 events



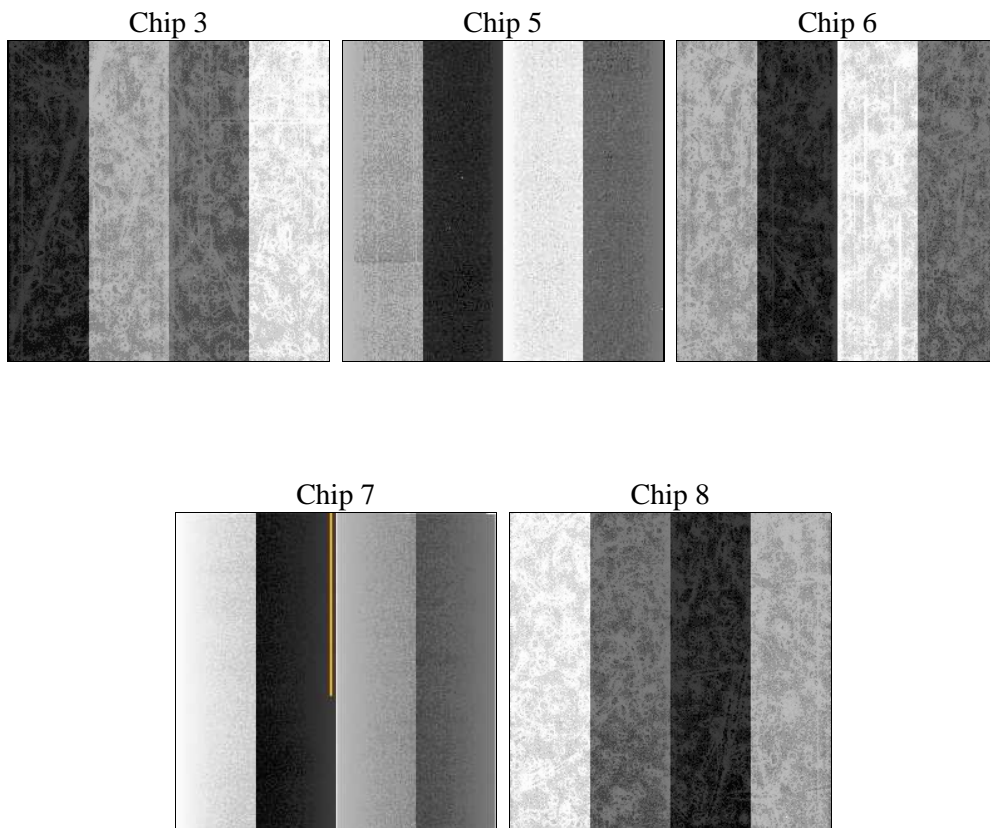
2 OBI

2.1 OBI

2.1.1 Images



2.1.2 Bias



2.1.3 Parameters

obi_num	0	Obi number	sched_exp_time	37900.000000	[s] Scheduled observation exposure time
ascdsver	8.4.4	Processing system revision	ontime	38055.600292683	Sum of GTIs [s]
caldbver	4.4.9	 	ontime3	38052.459332287	Sum of GTIs [s]
date	2012-05-30T06:34:44	Date and time of file creation	ontime5	38055.600292683	Sum of GTIs [s]
revision	2	Processing version of data	ontime6	38055.600292683	Sum of GTIs [s]
			ontime7	38055.600292683	Sum of GTIs [s]
			ontime8	38052.459332287	Sum of GTIs [s]
			l1events	2479878	Number of level 1 events

2.1.4 Events

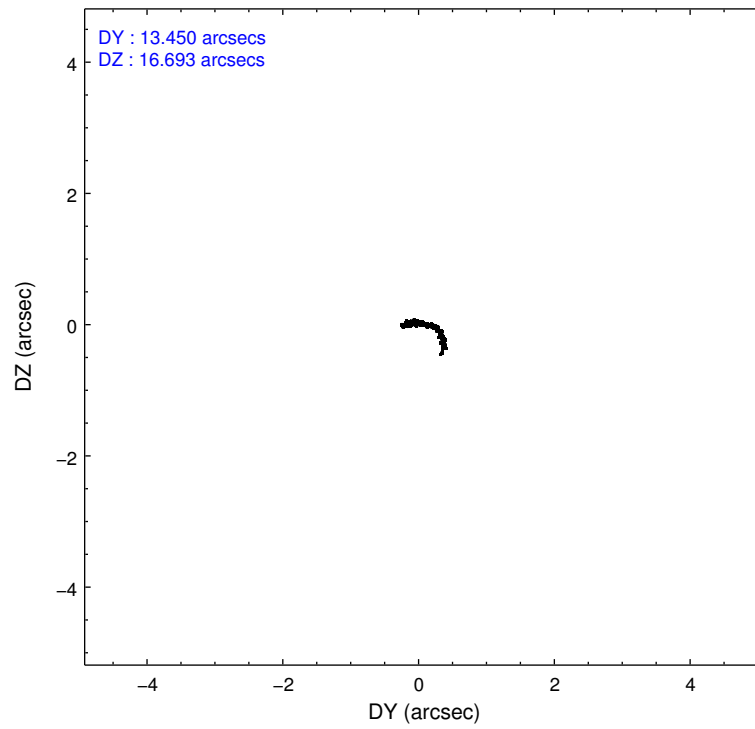
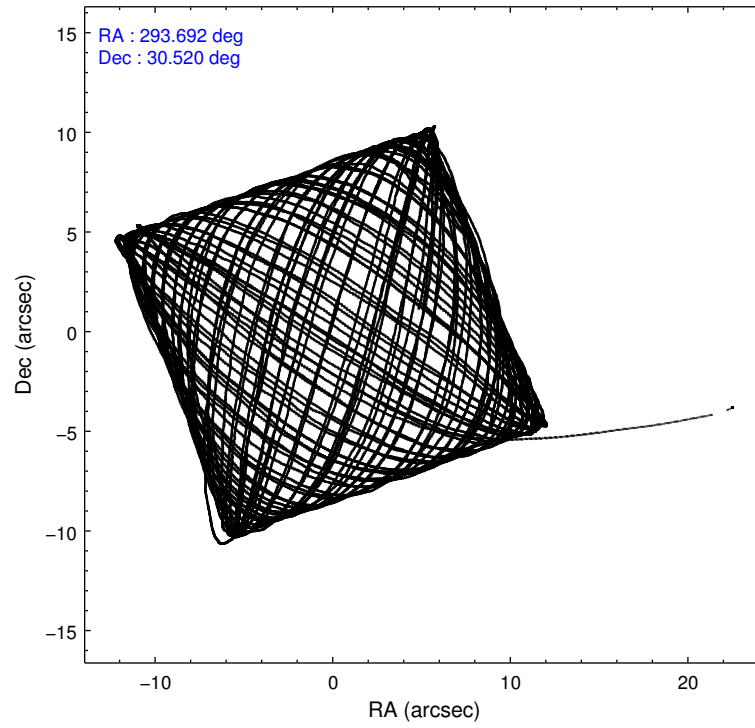
	ccd 3	ccd 5	ccd 6	ccd 7	ccd 8
level 1 events	385290	625163	395298	564871	509256
rejected events	336981	336811	344828	328012	389469
rejected %	87%	53%	87%	58%	76%

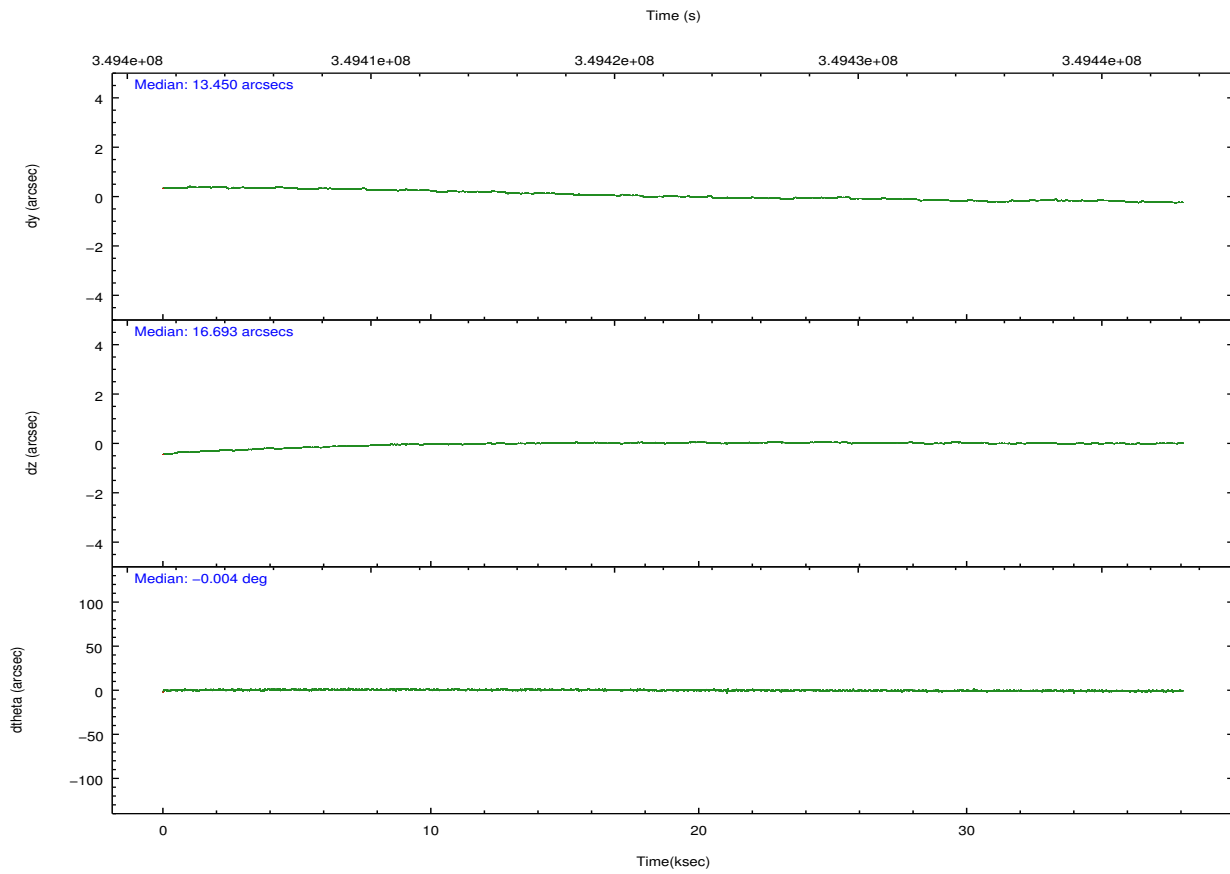
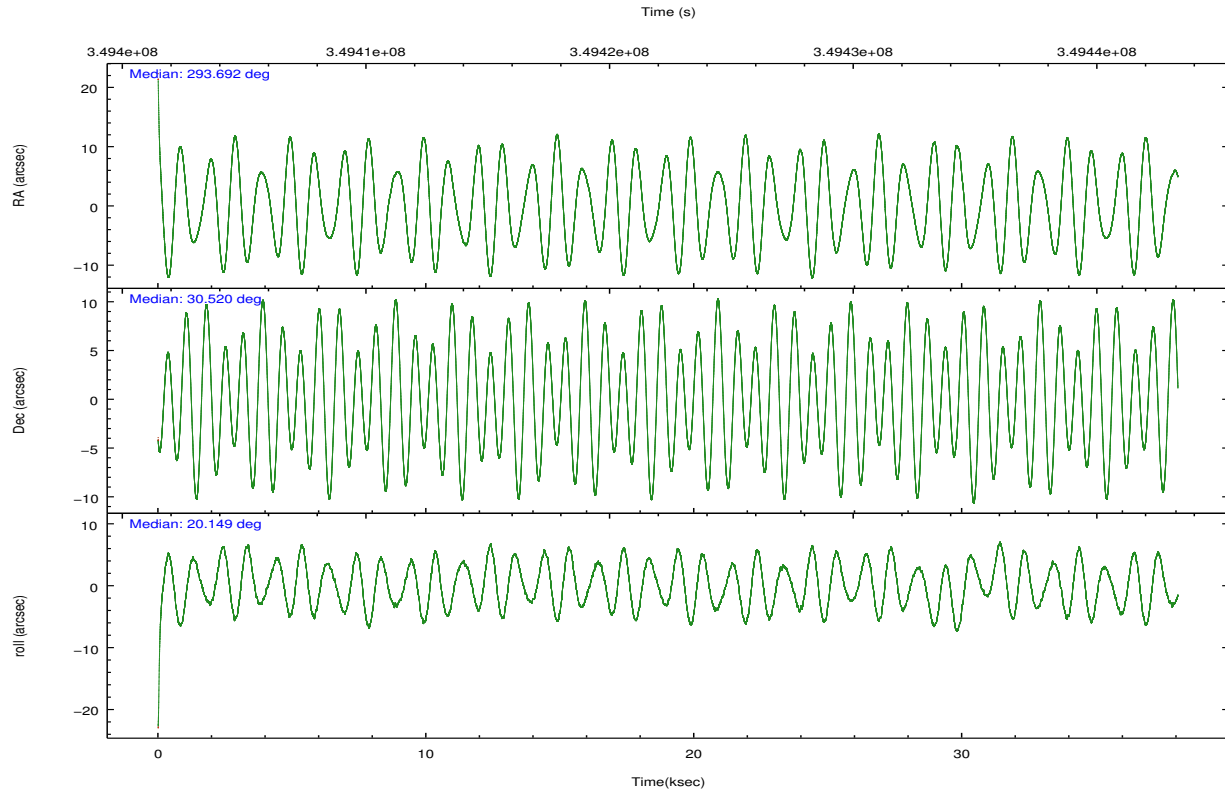
	ccd 3	ccd 5	ccd 6	ccd 7	ccd 8
grade 0 events	21855	33663	21433	23720	39267
	5%	5%	5%	4%	7%
grade 1 events	253	1050	235	630	402
	0%	0%	0%	0%	0%
grade 2 events	9727	87509	10870	50085	27213
	2%	13%	2%	8%	5%
grade 3 events	4495	10397	4448	20590	12173
	1%	1%	1%	3%	2%
grade 4 events	4446	10100	4468	20326	11569
	1%	1%	1%	3%	2%
grade 5 events	18335	43882	18758	52138	25453
	4%	7%	4%	9%	4%
grade 6 events	8524	151121	10016	125751	31270
	2%	24%	2%	22%	6%
grade 7 events	317655	287441	325070	271631	361909
	82%	45%	82%	48%	71%

2.2 Compared Parameters

Parameter	Planned	Actual	Parameter	Planned	Actual
Instrument	ACIS	ACIS	Obspar format version number	7	7
Detector	ACIS-35678	ACIS-35678	Obspar file type	PREDICTED	ACTUAL
Grating	NONE	NONE	Obspar update status	NONE	UPDATED
Data mode	FAINT	FAINT	CCD I0 on	N	N
Observation mode	POINTING	POINTING	CCD I1 on	N	N
[deg] Pointing RA	293.671811	293.6918145193795	CCD I2 on	O1	N
[deg] Pointing Dec	30.498940	30.5201765697903	CCD I3 on	O2	Y
[deg] Pointing Roll	20.008387	20.15485265148839	CCD S0 on	N	N
[mm] SIM focus pos	-0.684267	-0.6828225247311905	CCD S1 on	O3	Y
[mm] SIM defocus	0	0.001444936568705701	CCD S2 on	Y	Y
[mm] SIM translation stage pos	-190.132523	-190.1425803651734	CCD S3 on	Y	Y
[mm] SIM translation stage offset	0	0.01005778216563158	CCD S4 on	O4	Y
[s] Observation start time (MET)	349403533.184000	349402251.18385	CCD S5 on	N	N
Observation start date	2009-01-27T00:31:07	2009-01-27T00:10:51	Number of optional ACIS chips dropped	1	1
[s] Observation end time (MET)	349441433.184000	349442363.53583	On-chip summing requested	N	N
Observation end date	2009-01-27T11:02:47	2009-01-27T11:19:23	Subarray requested	NONE	NONE
Read mode	TIMED	TIMED	Alternating exposures requested	N	N
			[s] Primary exposure time	0.000000	3.1

2.3 Aspect



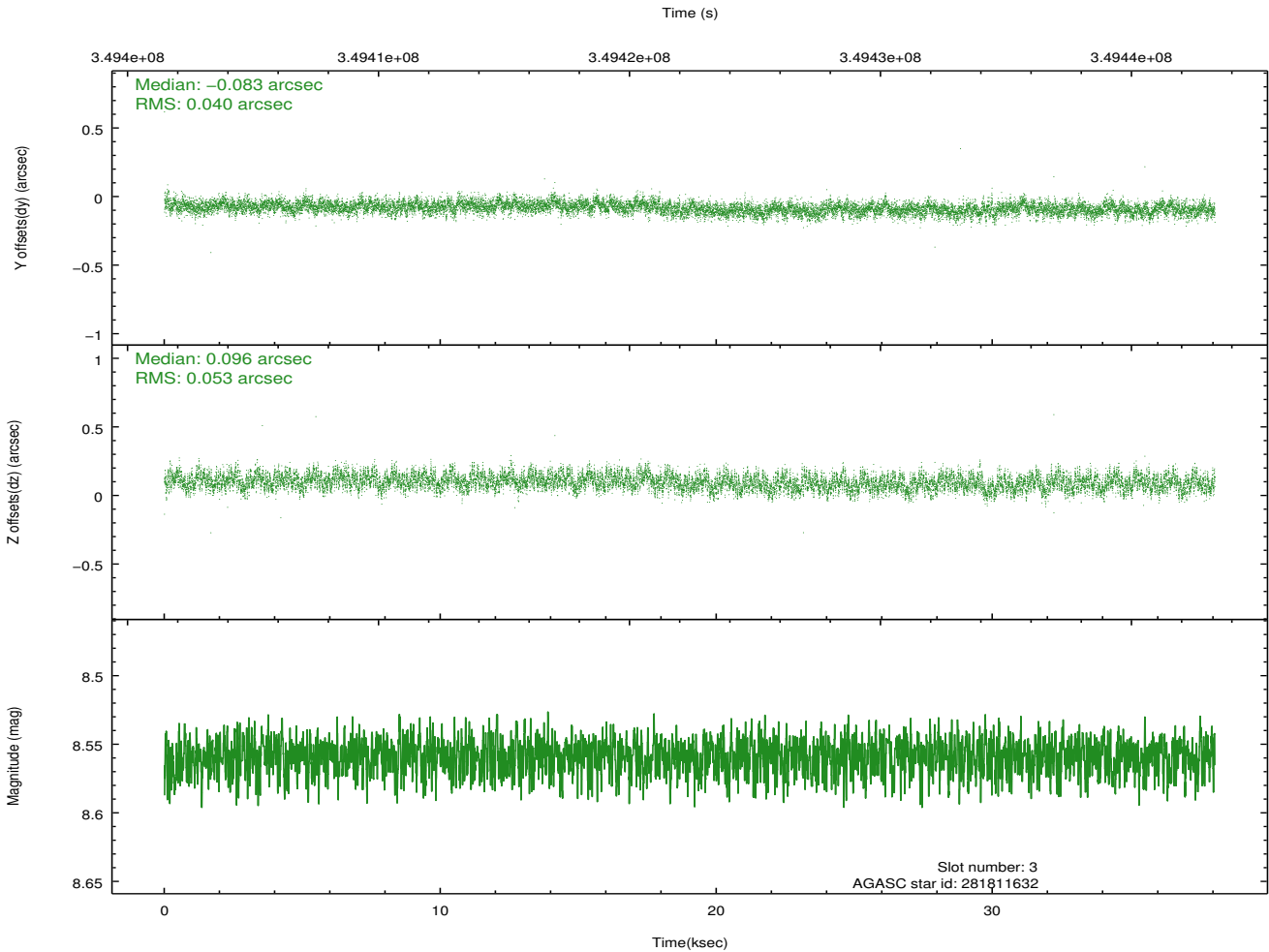
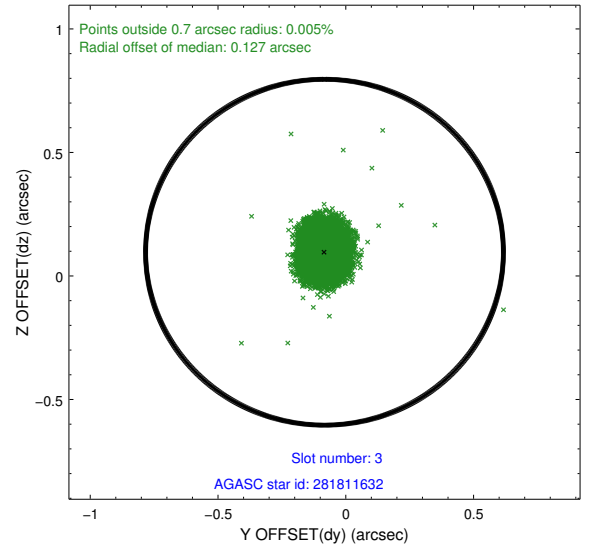
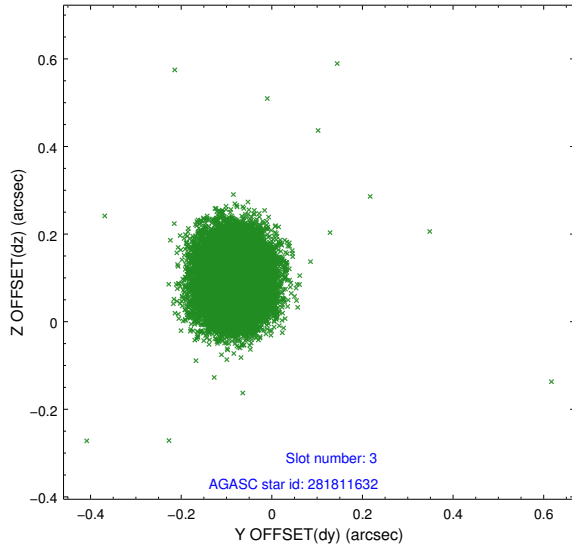


Slot Statistics

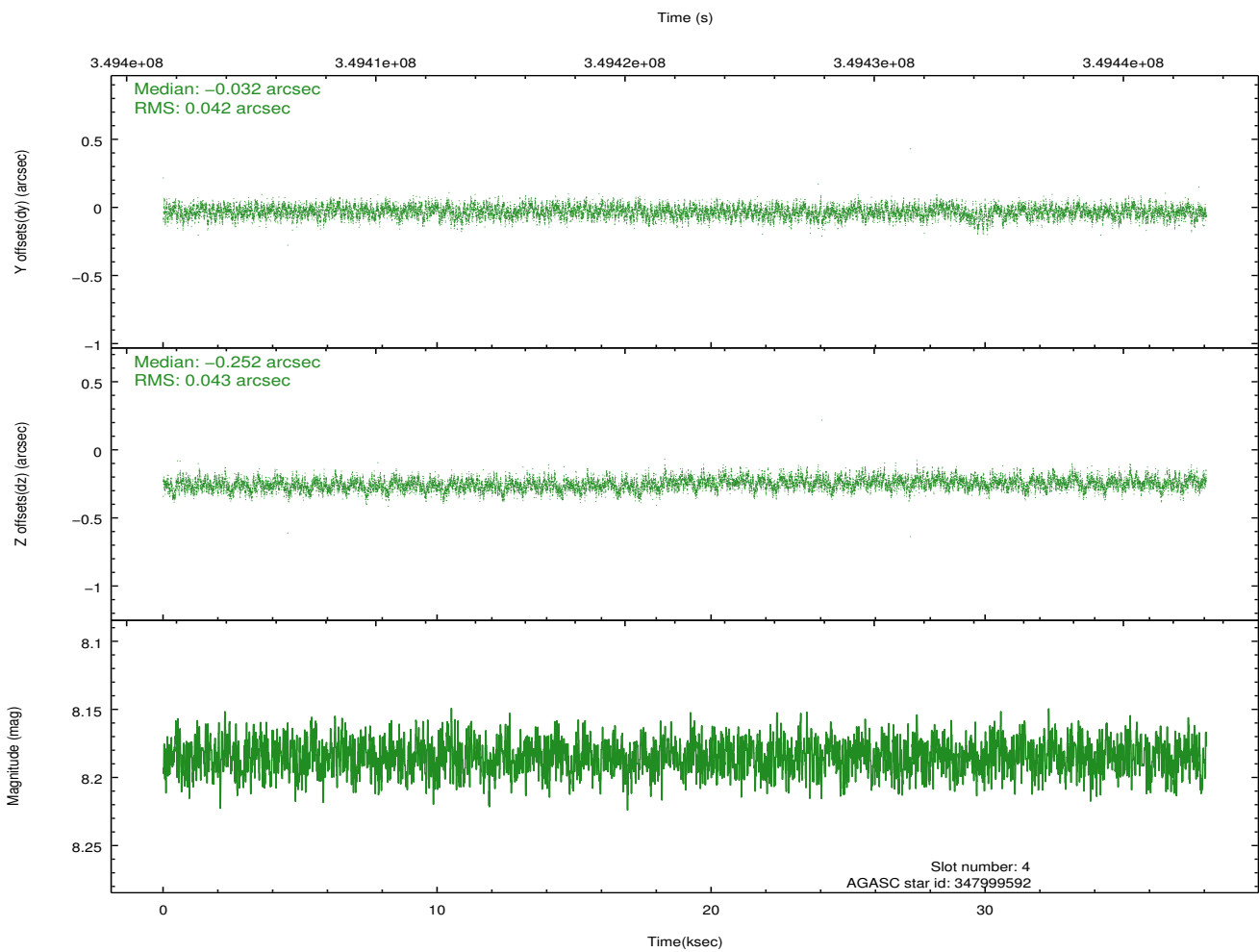
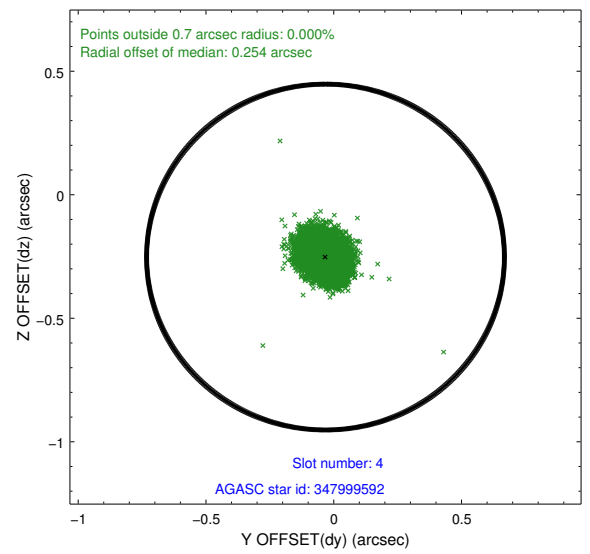
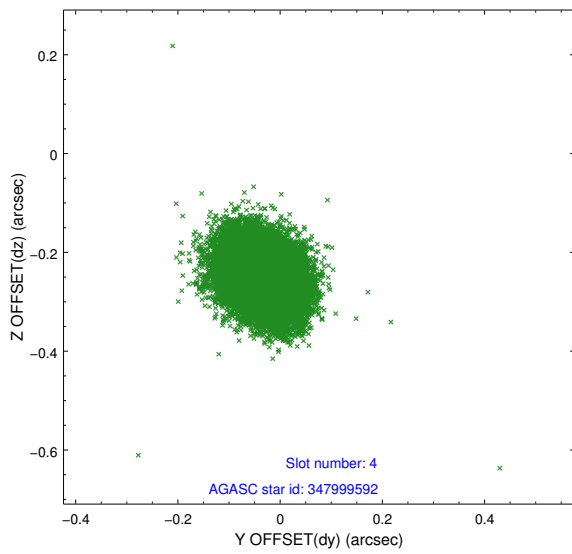
slot	status	id	mag	n_pts	med_dy	med_dz	dr1	dr2	ra	dec	mean_y	mean_z
0	FID	ACIS-S-2	6.88	9283	0.012	-0.026	0.011	0.017	0.000000	0.000000	-766.41	-1738.05
1	FID	ACIS-S-5	7.00	9284	-0.102	0.016	0.010	0.019	0.000000	0.000000	-1819.66	163.93
2	FID	ACIS-S-6	7.09	9284	0.065	0.019	0.009	0.017	0.000000	0.000000	395.22	807.88
3	GUIDE	281811632	8.56	18560	-0.083	0.096	0.070	0.113	293.312173	29.710666	-2026.73	-2280.22
4	GUIDE	347999592	8.18	18564	-0.032	-0.252	0.063	0.104	293.288831	30.972058	-527.51	2006.42
5	GUIDE	348020560	8.40	18559	0.056	0.064	0.064	0.104	294.143676	31.236009	2273.88	1999.73
6	GUIDE	348027440	8.11	18558	0.173	0.043	0.064	0.108	294.217472	30.325018	1381.07	-1164.32
7	GUIDE	348002056	8.37	18563	-0.111	0.050	0.060	0.099	294.513252	30.213063	2111.32	-1853.36

2.4 Star Slots

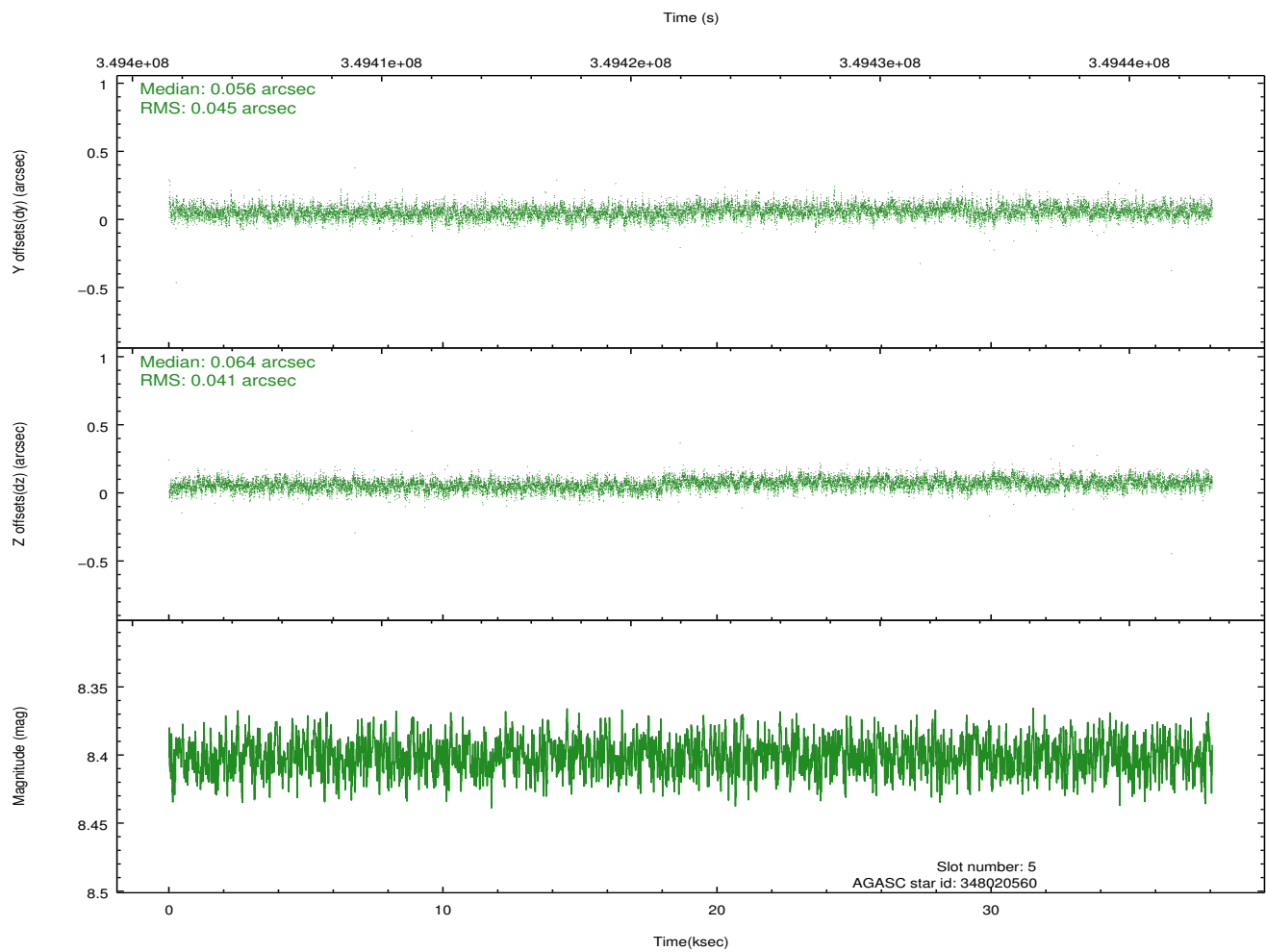
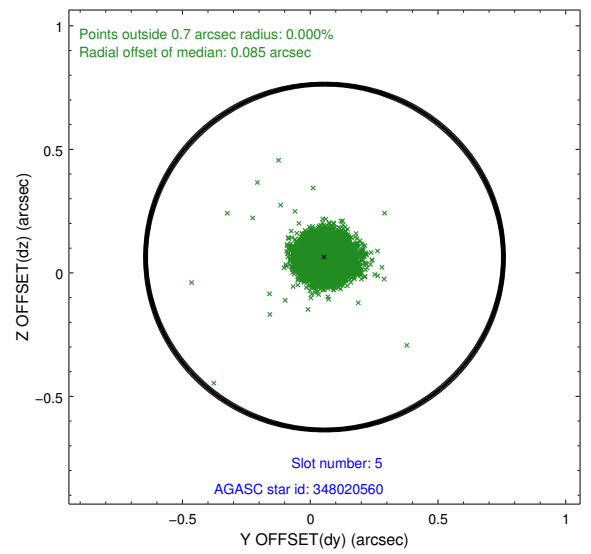
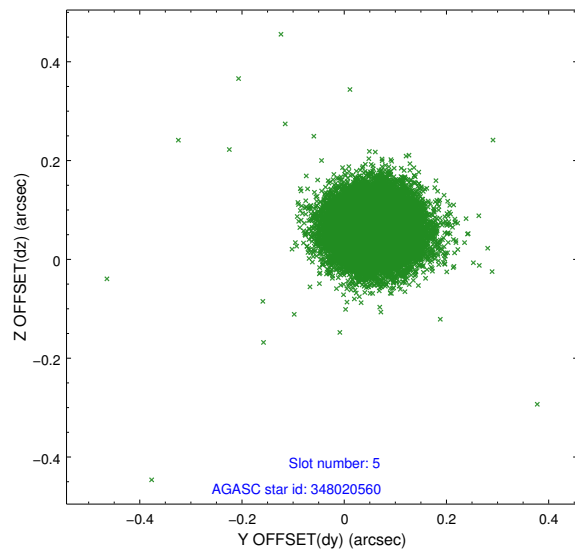
2.4.1 Slot 3



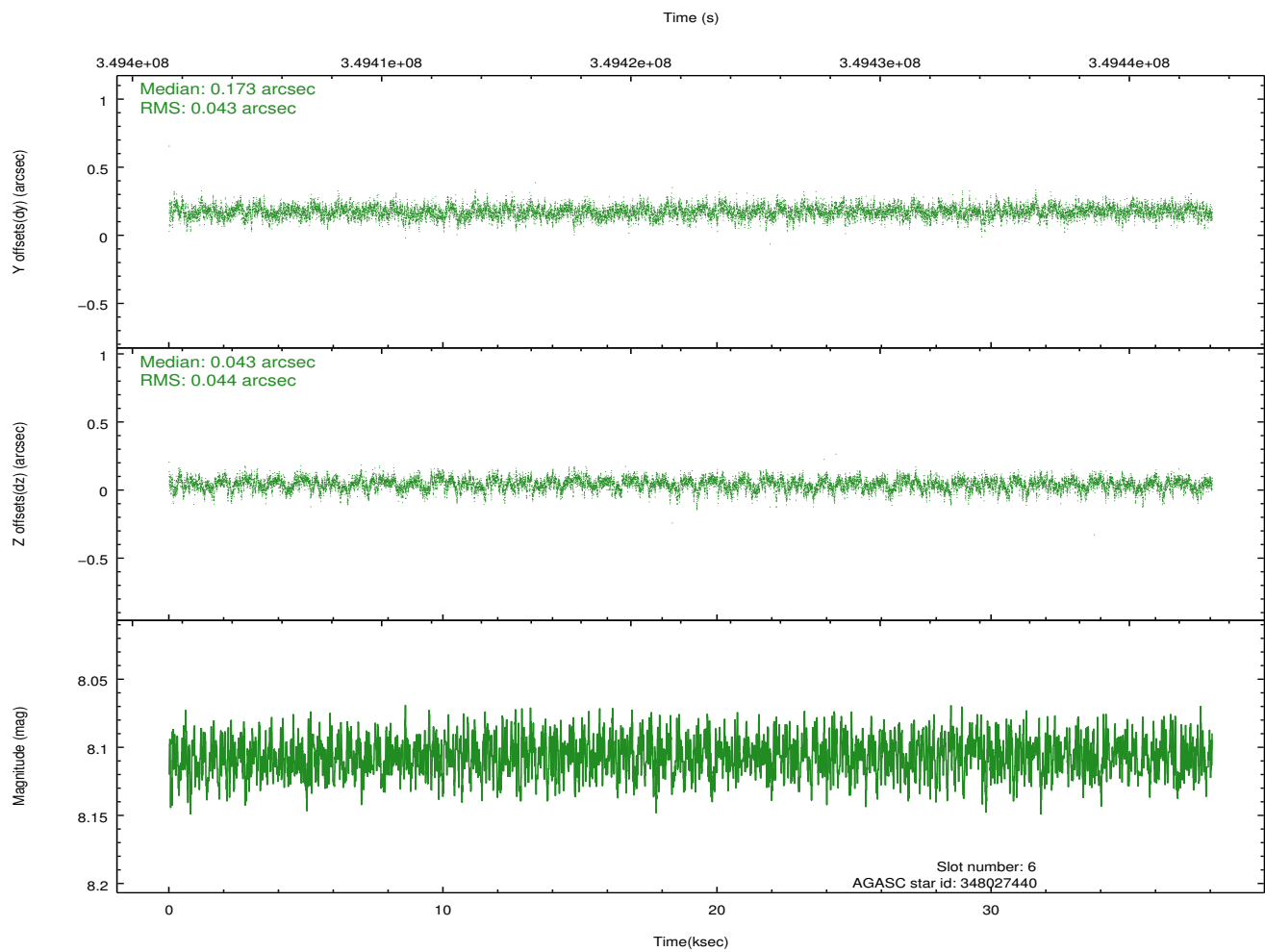
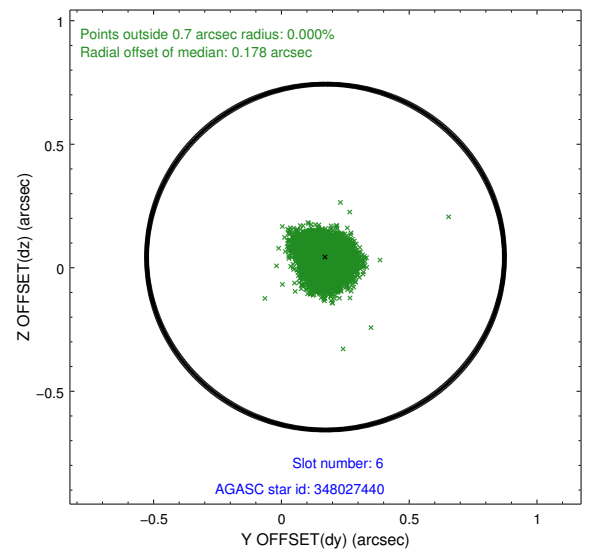
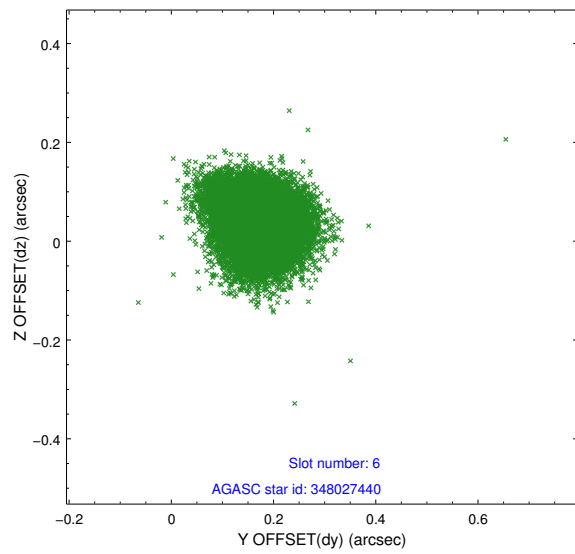
2.4.2 Slot 4



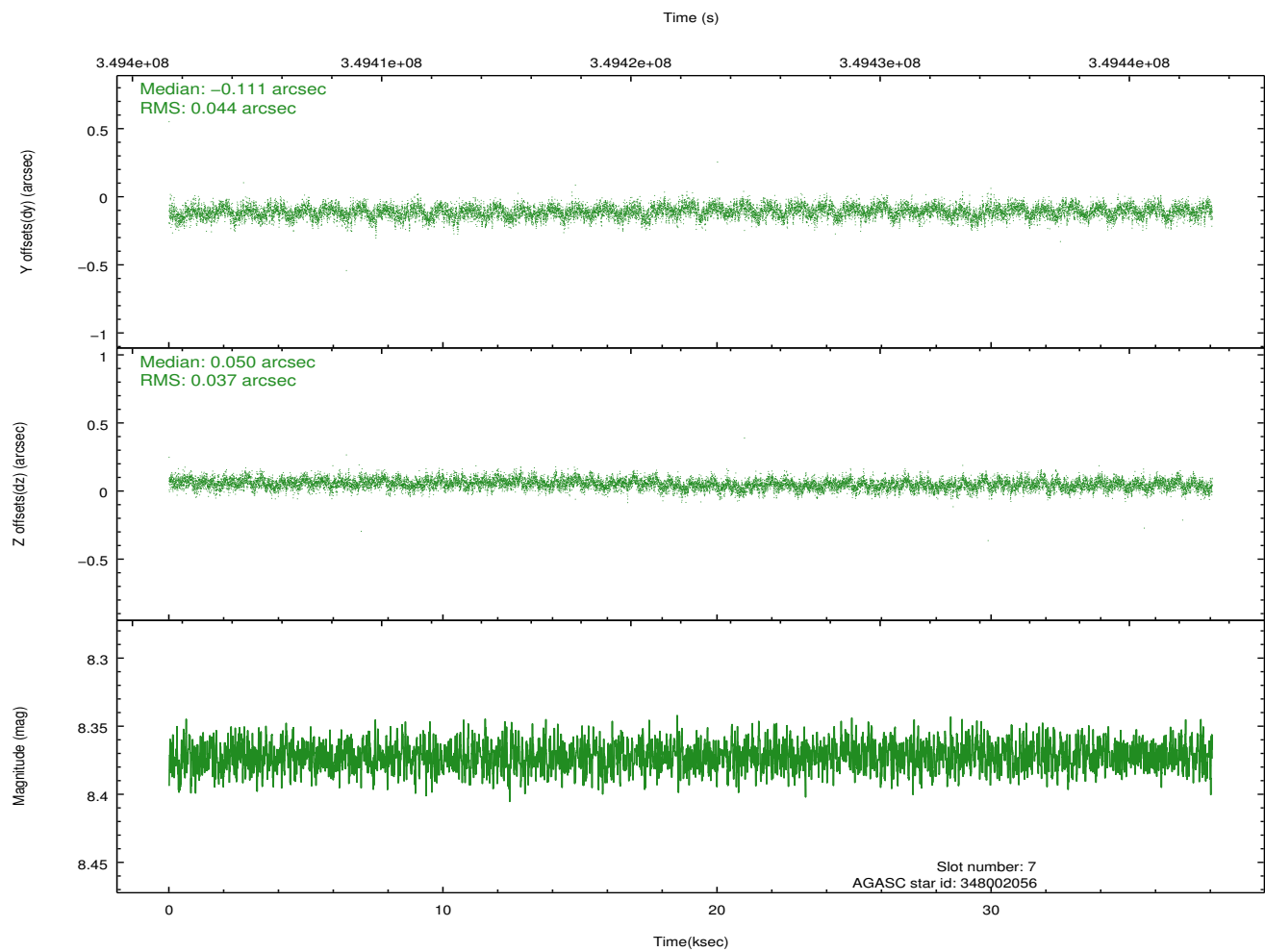
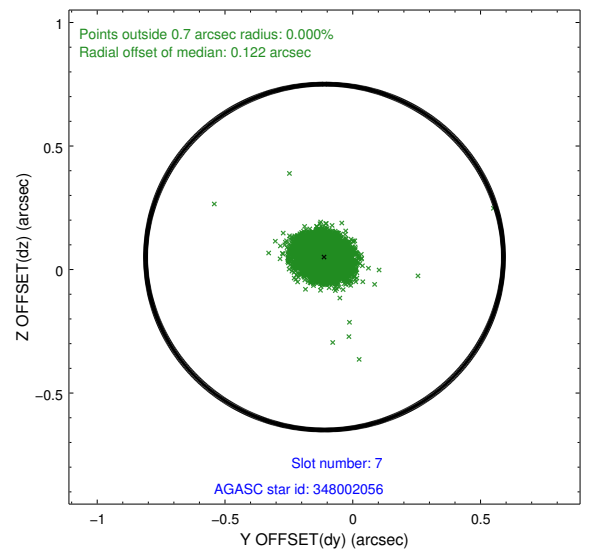
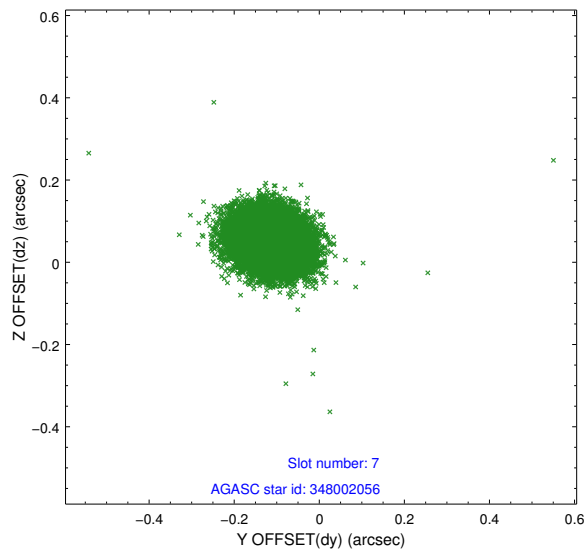
2.4.3 Slot 5



2.4.4 Slot 6

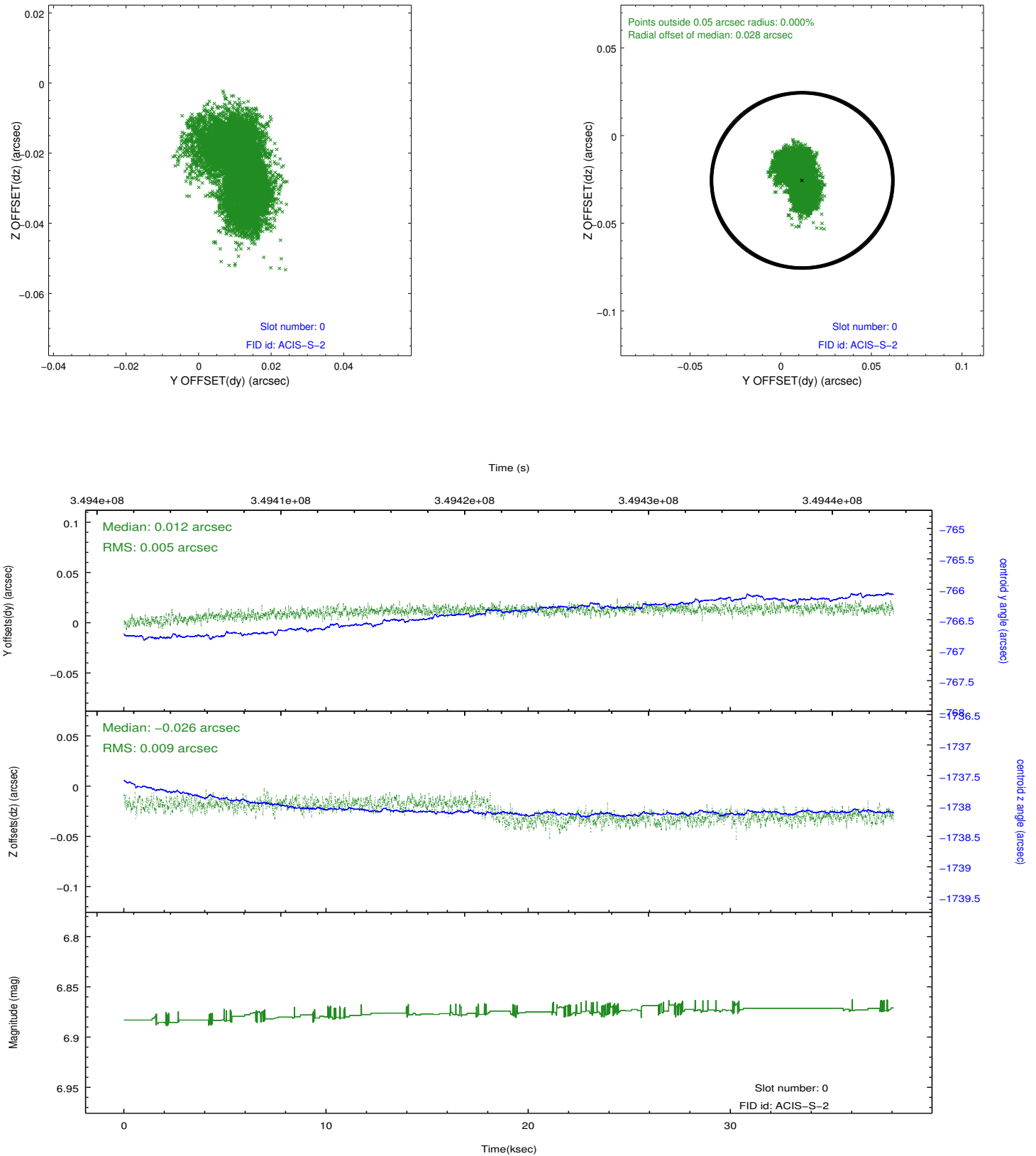


2.4.5 Slot 7

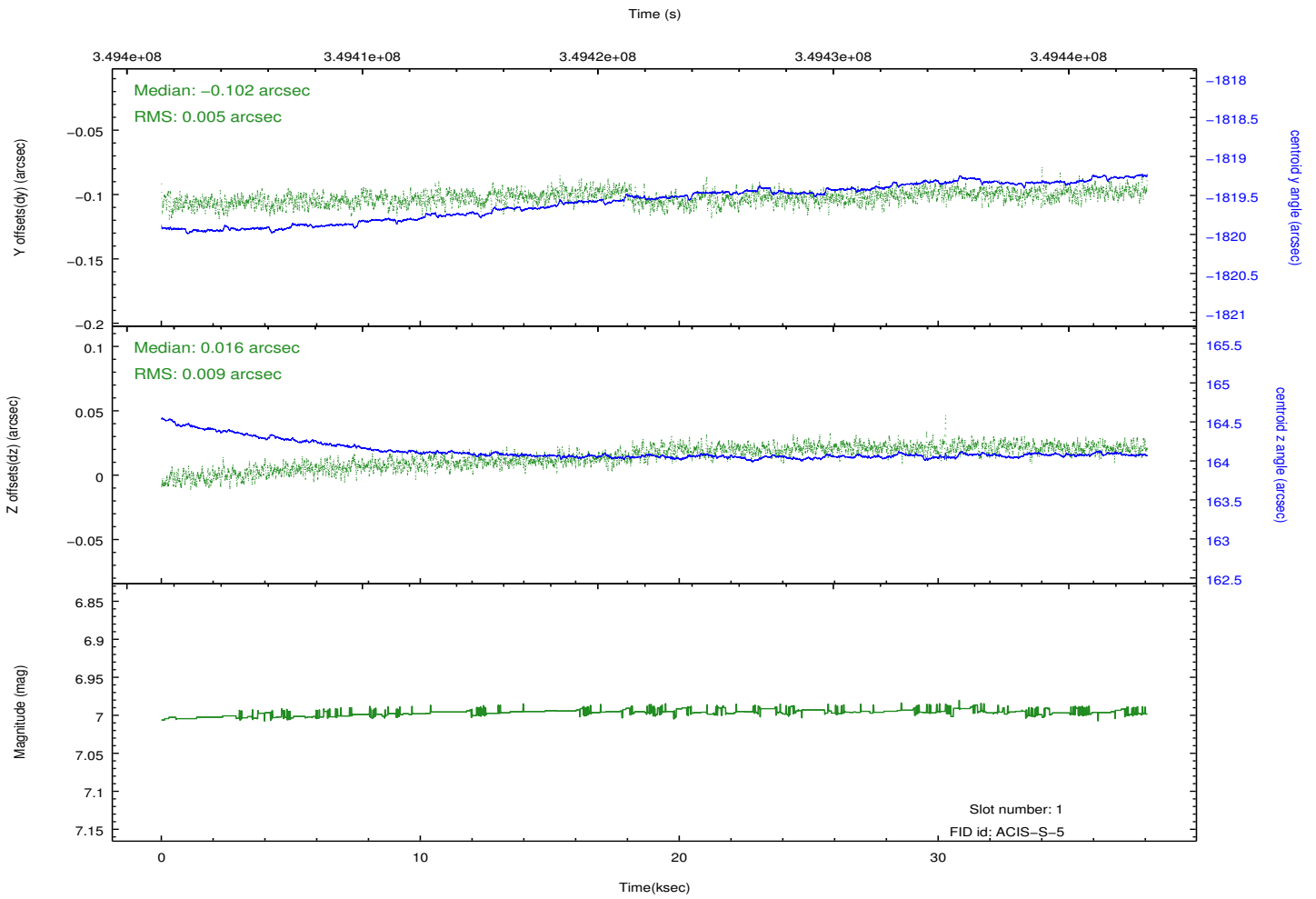
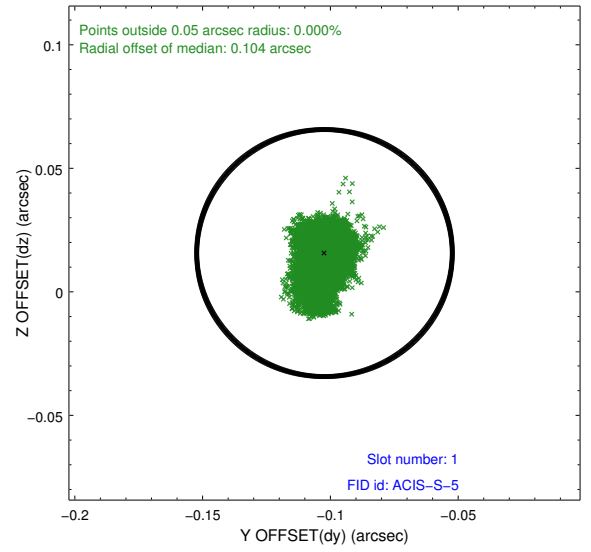
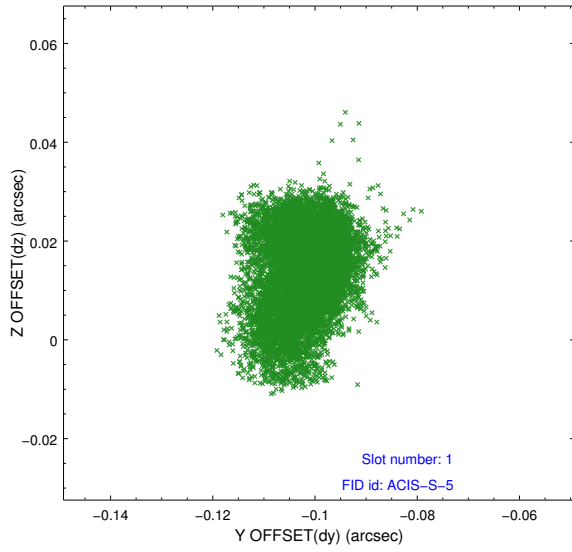


2.5 FID Slots

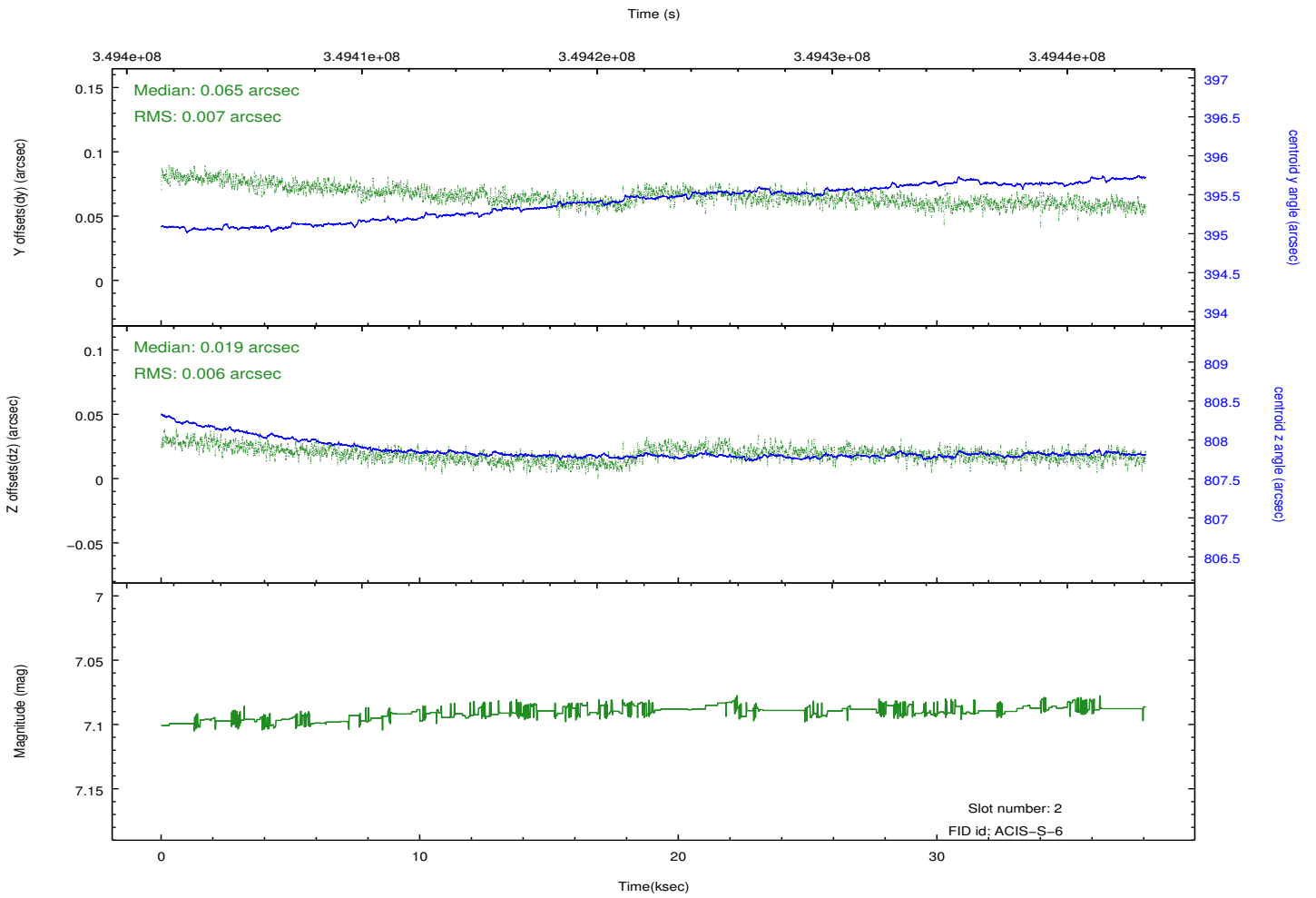
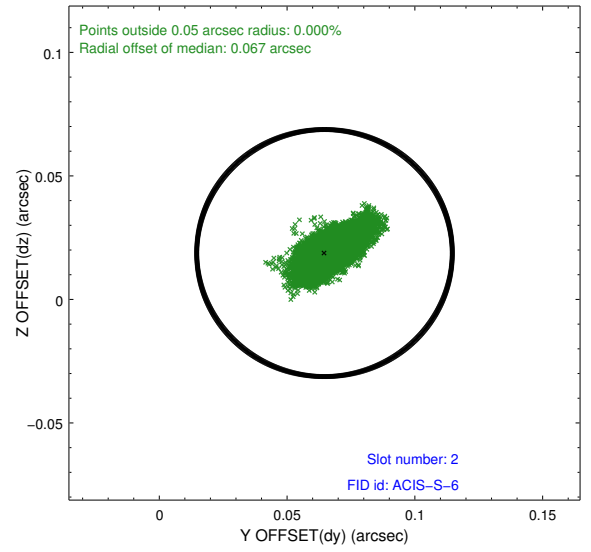
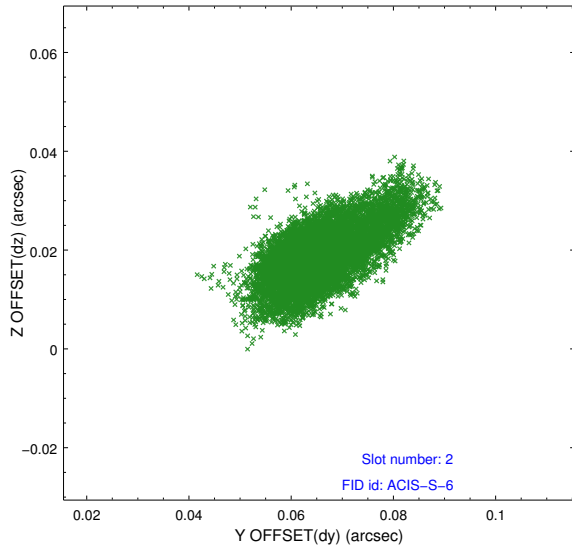
2.5.1 Slot 0



2.5.2 Slot 1



2.5.3 Slot 2



A Summary

A.1 Status

V&V Scientist	Jen Lauer
V&V Date (YYYY-MM-DD)	2012.06.04
V&V Edition	1
V&V Disposition and Status	OK
V&V Charge Time	38.0556002

A.2 Comments

Optional CCD I2 not used.