

V&V Reference Report

L2 ASCDS Version : 8.4.5

Observation 10053 - L2 Version 3
Chandra X-Ray Center

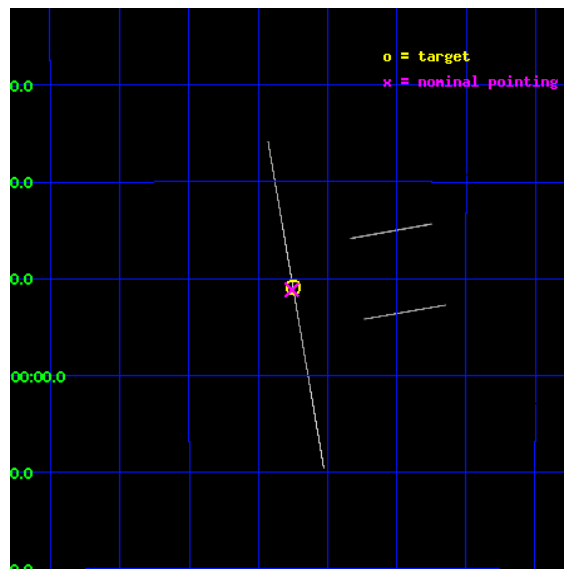
L2 Processing Date : Jun 11 2012

Contents

1	Front	2
2	OBI	3
2.1	OBI	3
2.1.1	Images	3
2.1.2	Bias	3
2.1.3	Parameters	4
2.1.4	Events	4
2.2	Compared Parameters	5
2.3	Aspect	6
2.4	Star Slots	9
2.4.1	Slot 3	9
2.4.2	Slot 4	10
2.4.3	Slot 5	11
2.4.4	Slot 6	12
2.4.5	Slot 7	13
2.5	FID Slots	14
2.5.1	Slot 0	14
2.5.2	Slot 1	15
2.5.3	Slot 2	16
A	Summary	17
A.1	Status	17
A.2	Comments	17

1 Front

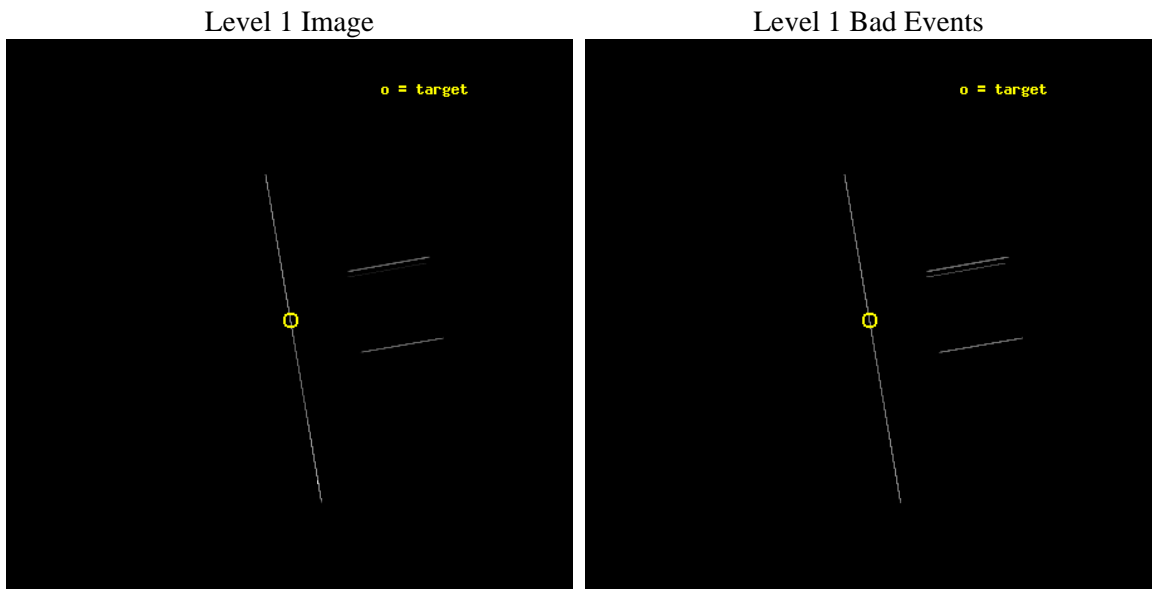
seq_num	401017	Sequence number
obs_id	10053	Observation id
title	Deep search for the pulsars powering the TeV emission of LS I 61+303 and LS 5039	Proposal title
observer	Dr. Nanda Rea	Principal investigator
object	LS 5039	Source name
ra_targ	276.5625	Observer's specified target RA [deg]
dec_targ	-14.848222	Observer's specified target Dec [deg]
ra_nom	276.56435813036	Nominal RA [deg]
dec_nom	-14.852717610282	Nominal Dec [deg]
roll_nom	260.15710231863	Nominal Roll [deg]
revision	3	Processing version of data
ontime	45140.5	Sum of GTIs [s]
livetime	44964.169921875	Livetime [s]
ontime2	45140.5	Sum of GTIs [s]
ontime3	45140.5	Sum of GTIs [s]
ontime5	45140.5	Sum of GTIs [s]
ontime6	45140.5	Sum of GTIs [s]
ontime7	45140.5	Sum of GTIs [s]
ontime8	45140.5	Sum of GTIs [s]
l2events	909677	Number of level 2 events



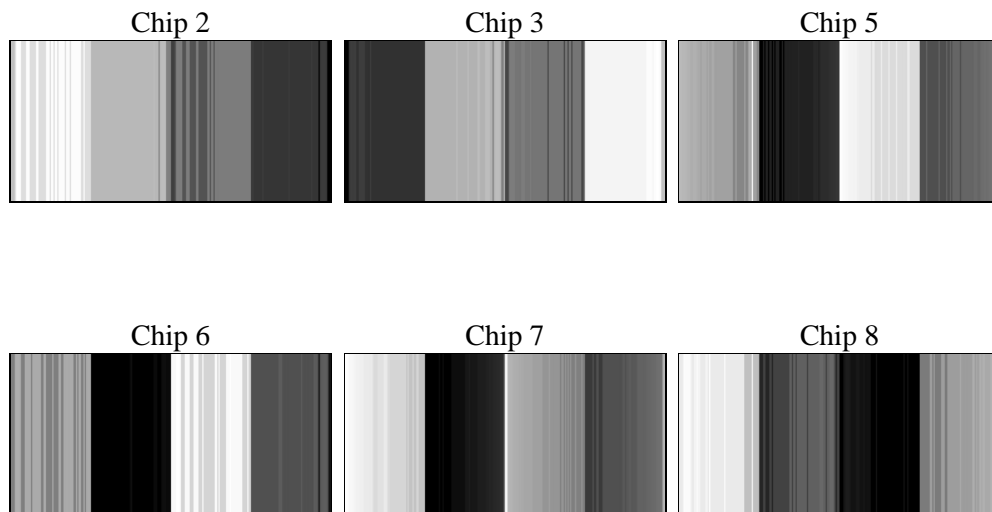
2 OBI

2.1 OBI

2.1.1 Images



2.1.2 Bias



2.1.3 Parameters

obi_num	0	Obi number	sched_exp_time	45000.000000	[s] Scheduled observation exposure time
ascdsver	8.4.5	Processing system revision	ontime	45140.5	Sum of GTIs [s]
caldsver	4.4.10	 	ontime2	45140.5	Sum of GTIs [s]
date	2012-06-11T03:03:56	Date and time of file creation	ontime3	45140.5	Sum of GTIs [s]
revision	3	Processing version of data	ontime5	45140.5	Sum of GTIs [s]
			ontime6	45140.5	Sum of GTIs [s]
			ontime7	45140.5	Sum of GTIs [s]
			ontime8	45140.5	Sum of GTIs [s]
			l1events	2054436	Number of level 1 events

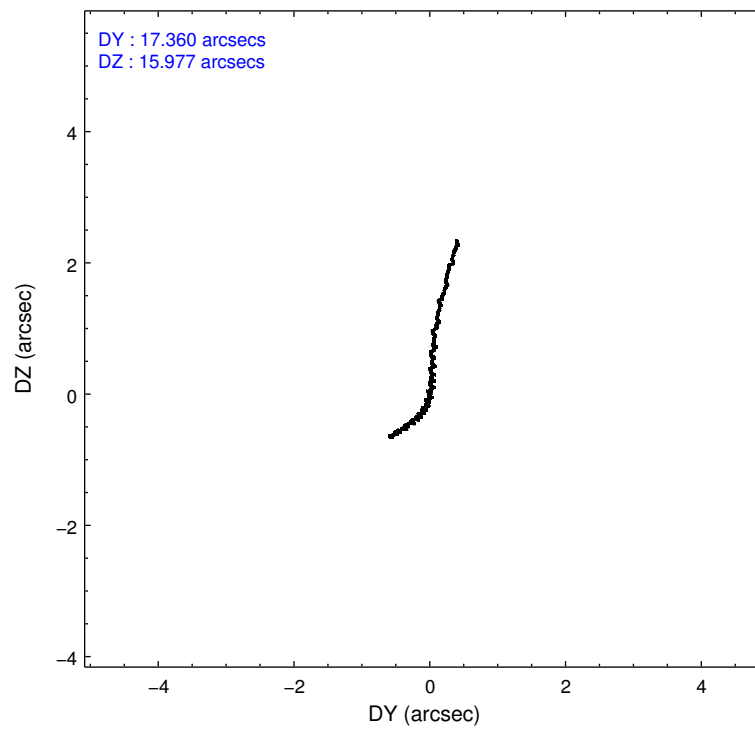
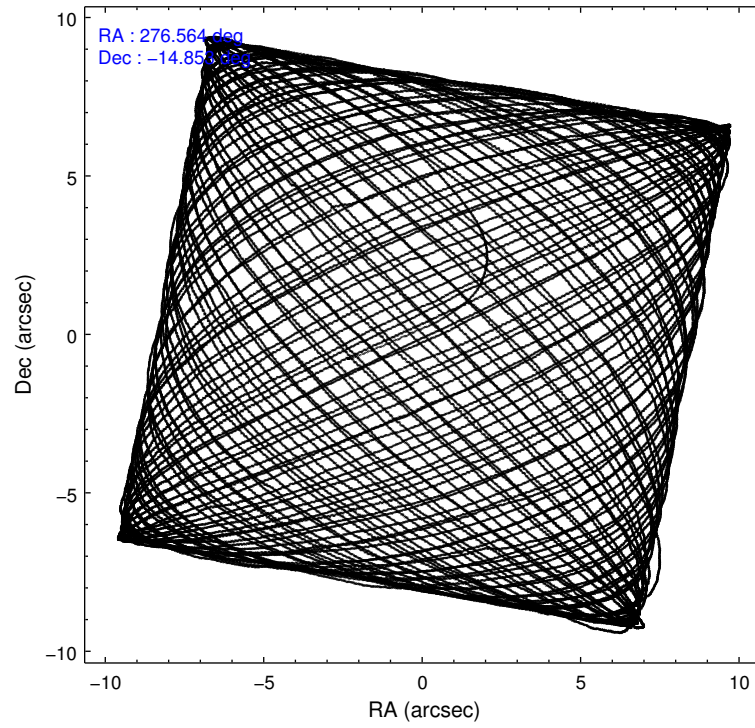
2.1.4 Events

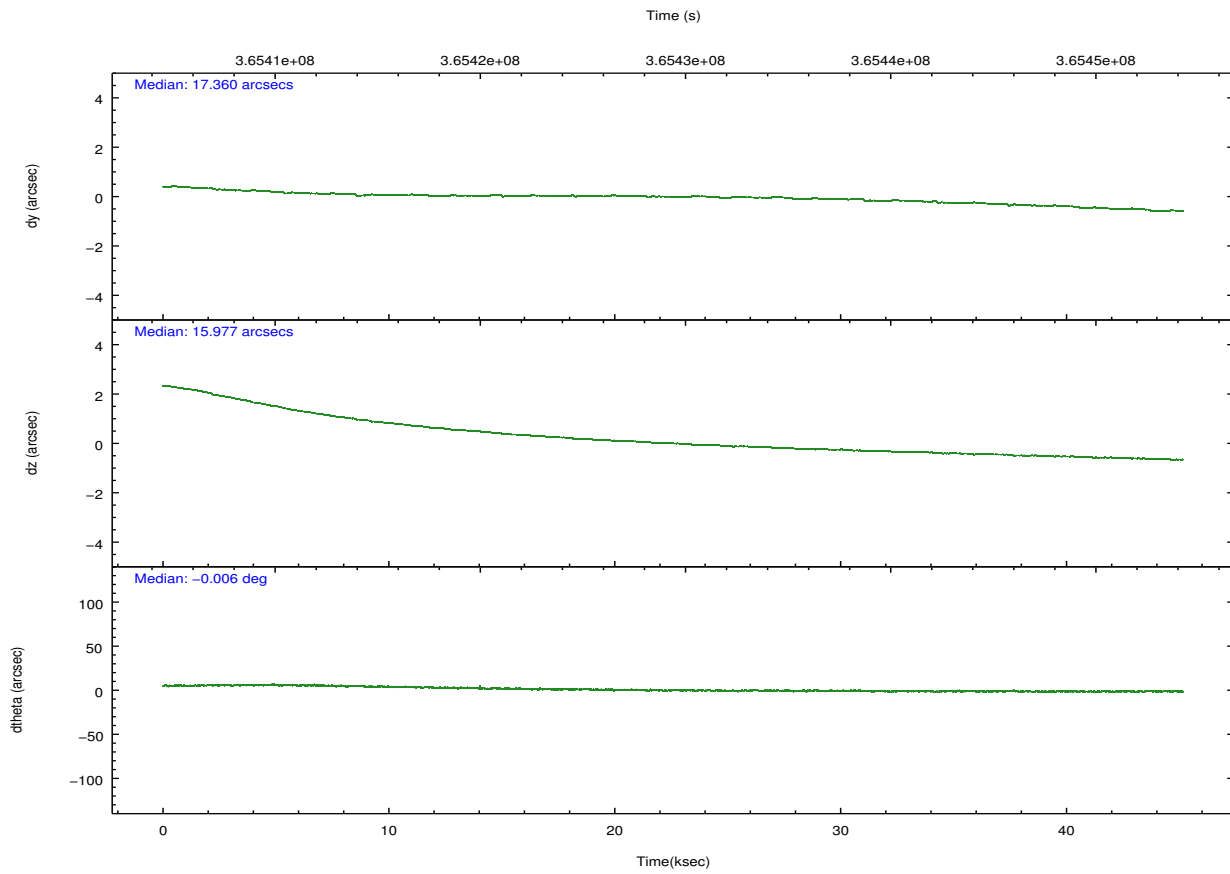
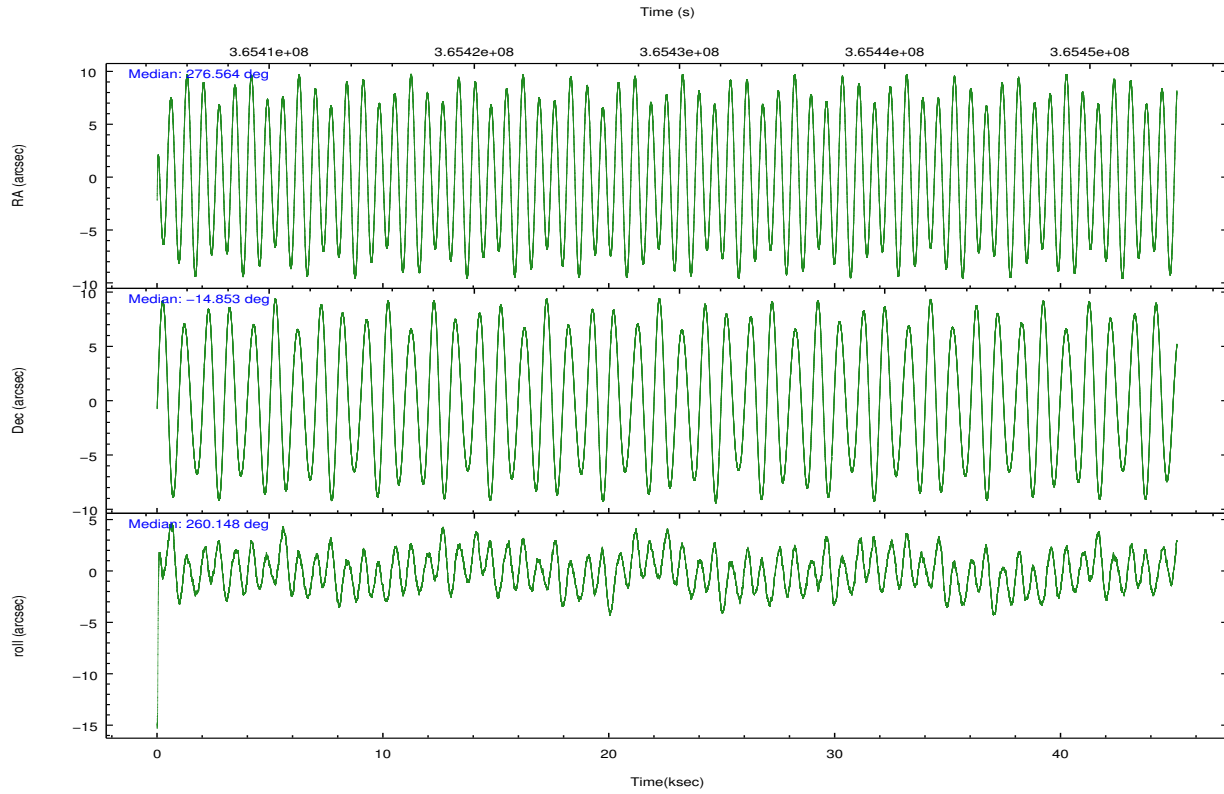
	ccd 2	ccd 3	ccd 5	ccd 6	ccd 7	ccd 8		ccd 2	ccd 3	ccd 5	ccd 6	ccd 7	ccd 8
level 1 events	100781	110229	1147673	111326	350112	234315	grade 0 events	11824	12595	417738	11975	25791	41984
rejected events	22045	23659	58194	24981	61108	37147		11%	11%	36%	10%	7%	17%
rejected %	21%	21%	5%	22%	17%	15%	grade 1 events	435	468	902	438	890	906
								0%	0%	0%	0%	0%	0%
							grade 2 events	31903	35532	462157	34551	78873	64143
								31%	32%	40%	31%	22%	27%
							grade 3 events	9681	11033	8642	10353	18590	21024
								9%	10%	0%	9%	5%	8%
							grade 4 events	9694	9645	8276	9995	18190	20479
								9%	8%	0%	8%	5%	8%
							grade 5 events	19508	21116	44823	22370	53479	31148
								19%	19%	3%	20%	15%	13%
							grade 6 events	17736	19840	205135	21644	154299	54631
								17%	17%	17%	19%	44%	23%
							grade 7 events	0	0	0	0	0	0
								0%	0%	0%	0%	0%	0%

2.2 Compared Parameters

Parameter	Planned	Actual	Parameter	Planned	Actual
Instrument	ACIS	ACIS	Obspar format version number	7	7
Detector	ACIS-235678	ACIS-235678	Obspar file type	PREDICTED	ACTUAL
Grating	NONE	NONE	Obspar update status	NONE	UPDATED
Data mode	CC33_FAINT	CC33_FAINT	CCD I0 on	N	N
Observation mode	POINTING	POINTING	CCD I1 on	N	N
[deg] Pointing RA	276.554260	276.5643581303592	CCD I2 on	O1	Y
[deg] Pointing Dec	-14.827190	-14.85271761028204	CCD I3 on	O2	Y
[deg] Pointing Roll	259.997894	260.1571023186341	CCD S0 on	N	N
[mm] SIM focus pos	-0.684267	-0.6828225247311905	CCD S1 on	Y	Y
[mm] SIM defocus	0	0.001444936568705701	CCD S2 on	Y	Y
[mm] SIM translation stage pos	-190.132523	-190.1400660498719	CCD S3 on	Y	Y
[mm] SIM translation stage offset	0	0.00754346686406393	CCD S4 on	Y	Y
[s] Observation start time (MET)	365406969.184000	365405684.60589	CCD S5 on	N	N
Observation start date	2009-07-31T05:55:03	2009-07-31T05:34:44	Number of optional ACIS chips dropped	0	0
[s] Observation end time (MET)	365451969.184000	365452517.37073	On-chip summing requested	N	N
Observation end date	2009-07-31T18:25:03	2009-07-31T18:35:17	Subarray requested	NONE	NONE
Read mode	CONTINUOUS	CONTINUOUS	Alternating exposures requested	N	N
			[s] Primary exposure time	0.000000	0

2.3 Aspect



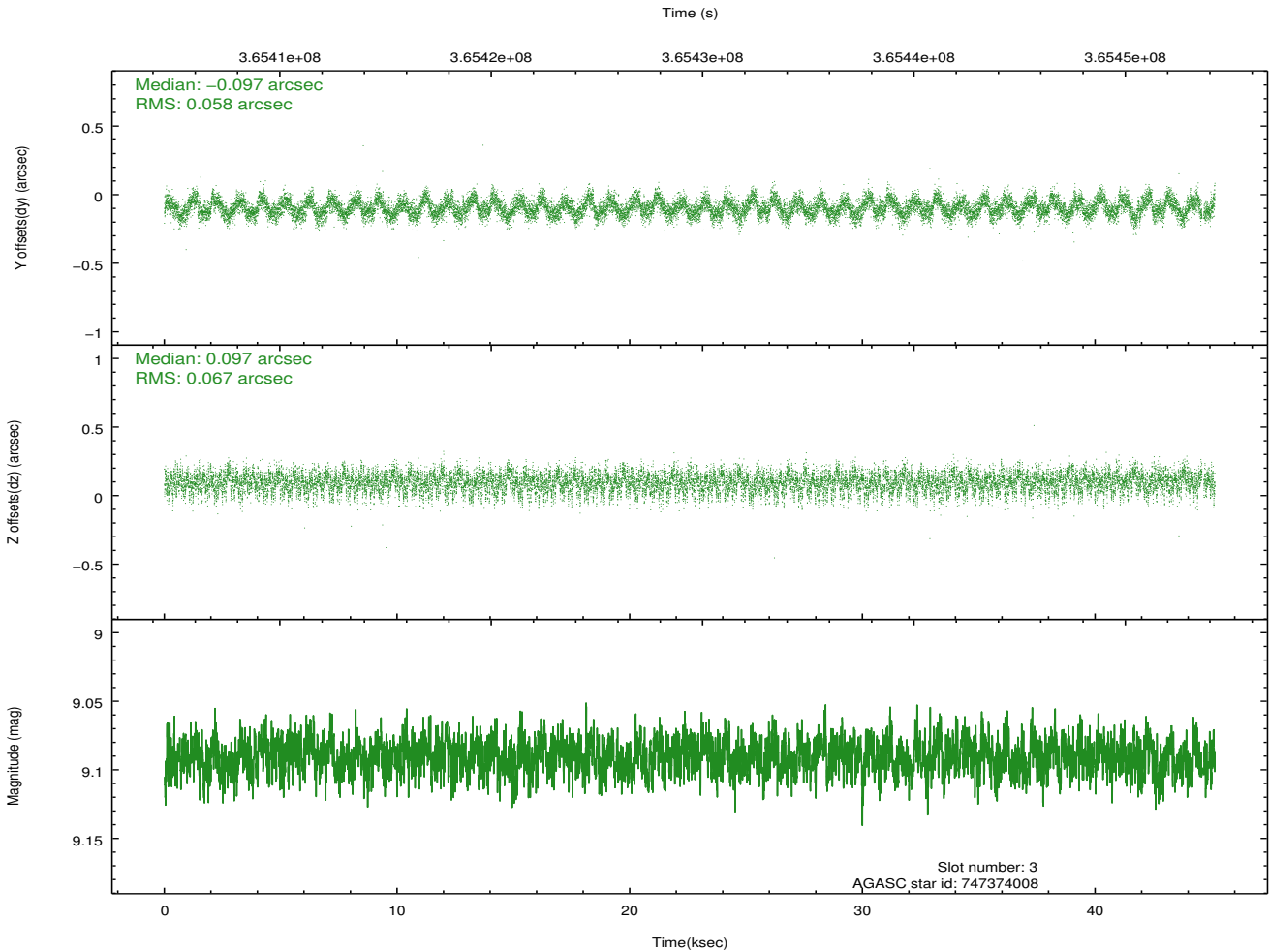
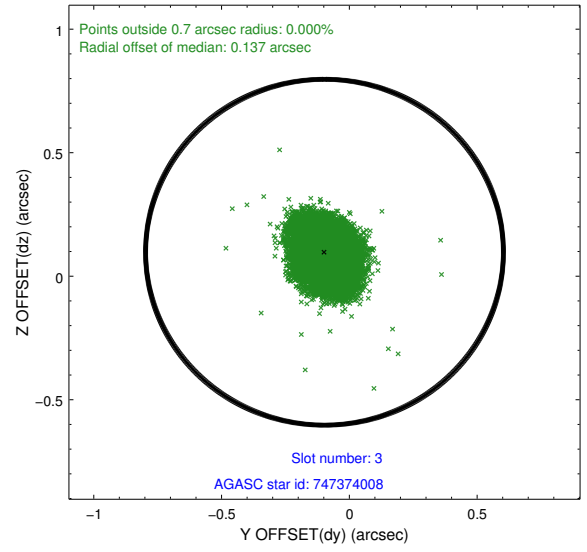
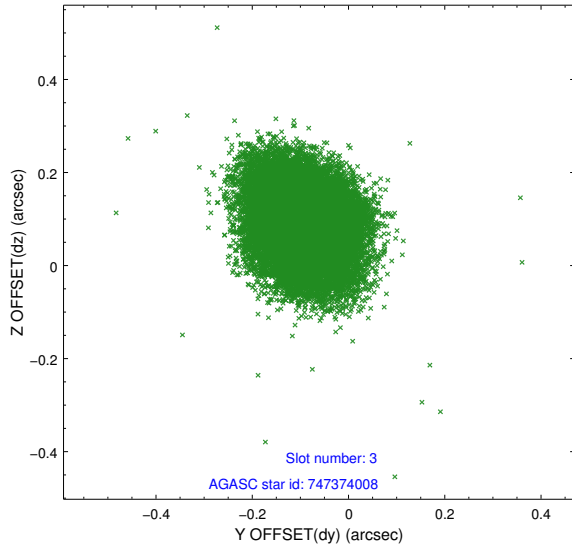


Slot Statistics

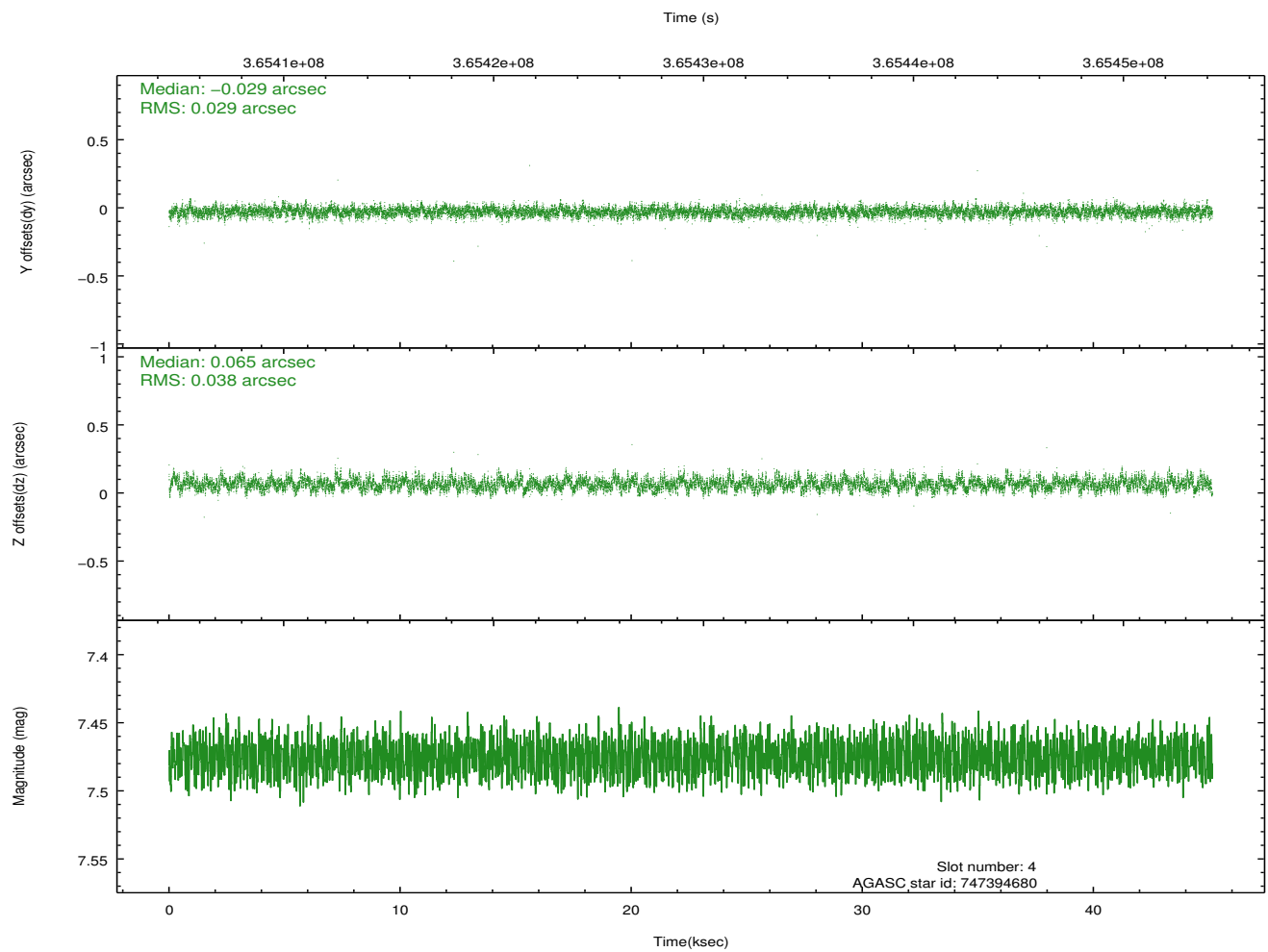
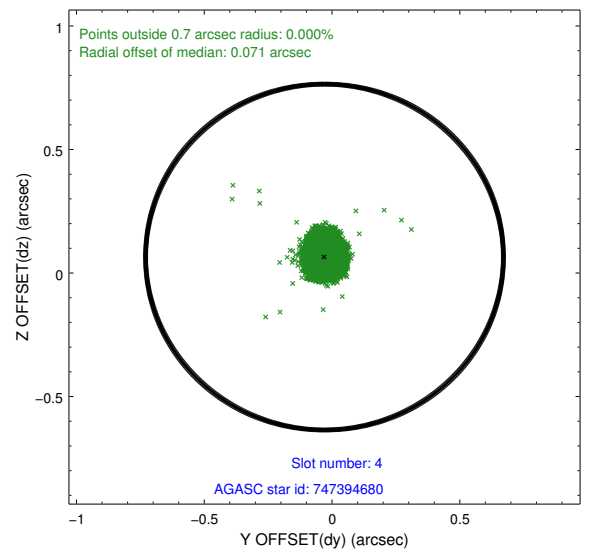
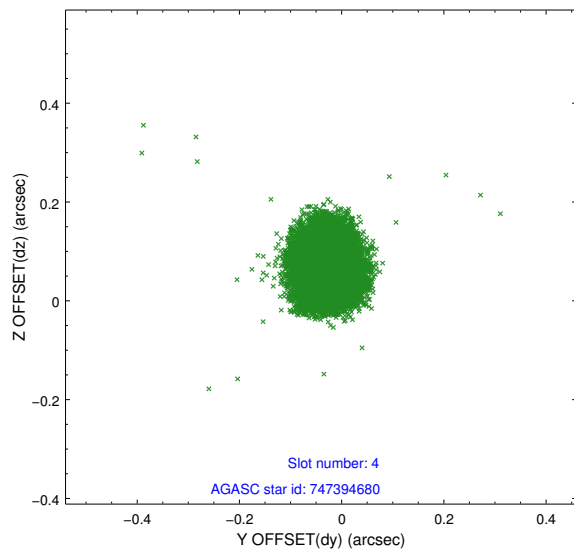
slot	status	id	mag	n_pts	med_dy	med_dz	dr1	dr2	ra	dec	mean_y	mean_z
0	FID	ACIS-S-1	7.00	11012	0.053	-0.061	0.030	0.048	0.000000	0.000000	925.77	-1733.33
1	FID	ACIS-S-4	7.01	11012	0.113	0.021	0.011	0.036	0.000000	0.000000	2143.22	170.92
2	FID	ACIS-S-5	7.04	11011	-0.198	0.055	0.029	0.042	0.000000	0.000000	-1823.38	164.51
3	GUIDE	747374008	9.09	21955	-0.097	0.097	0.094	0.150	275.902160	-14.886209	607.53	-2196.65
4	GUIDE	747394680	7.47	22017	-0.029	0.065	0.050	0.083	276.275759	-14.649373	-460.81	-1066.32
5	GUIDE	747395024	7.90	22017	-0.107	0.035	0.052	0.084	277.013372	-14.660681	-866.43	1470.86
6	GUIDE	821172784	9.20	21933	0.233	-0.115	0.111	0.188	275.866733	-15.346945	2261.97	-2024.53
7	GUIDE	821313912	7.15	22023	-0.014	-0.080	0.077	0.129	276.880488	-15.373623	1741.30	1457.68

2.4 Star Slots

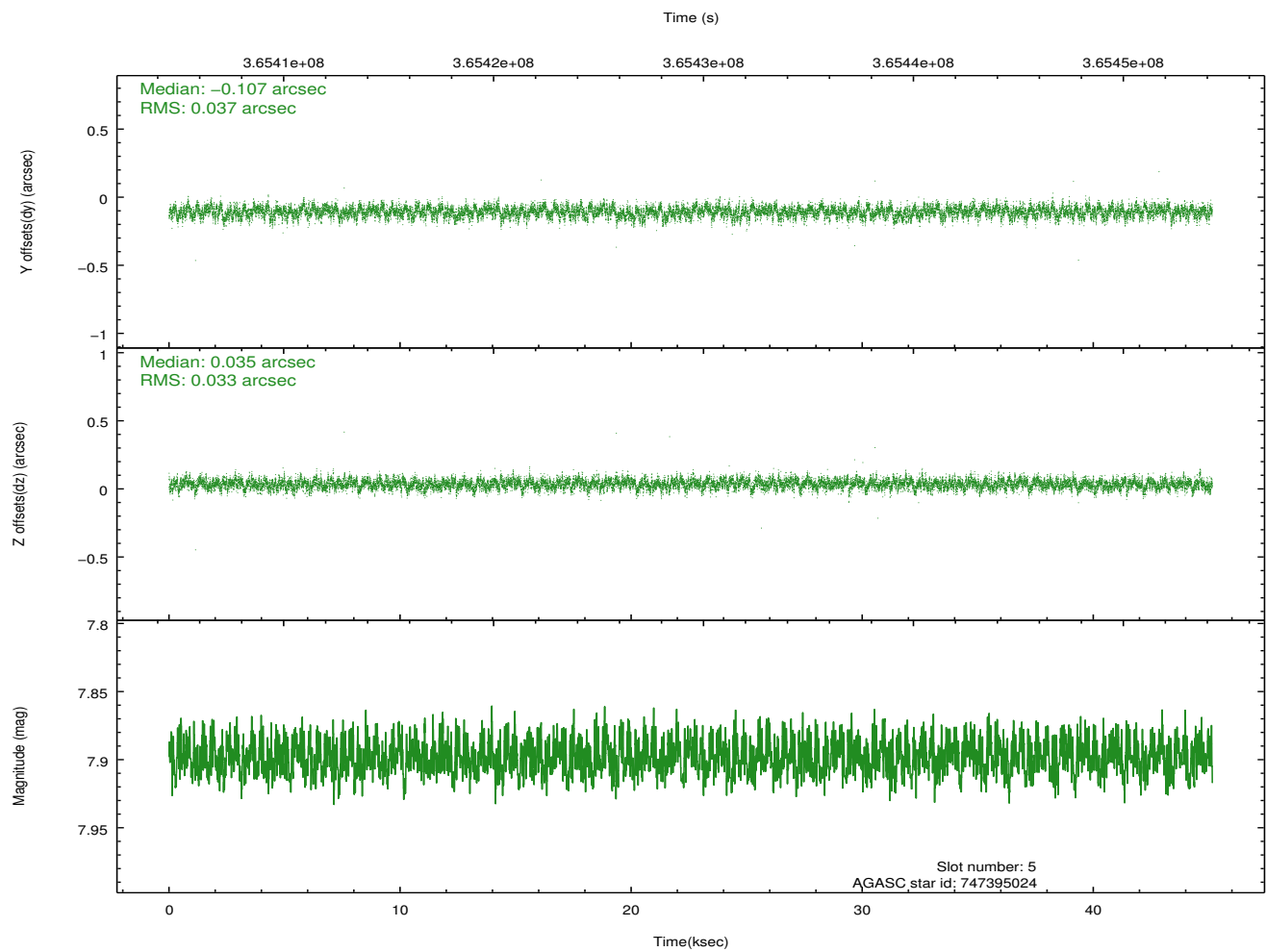
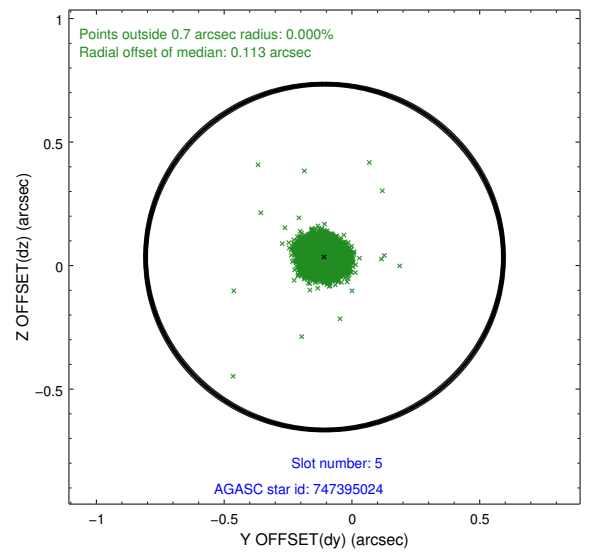
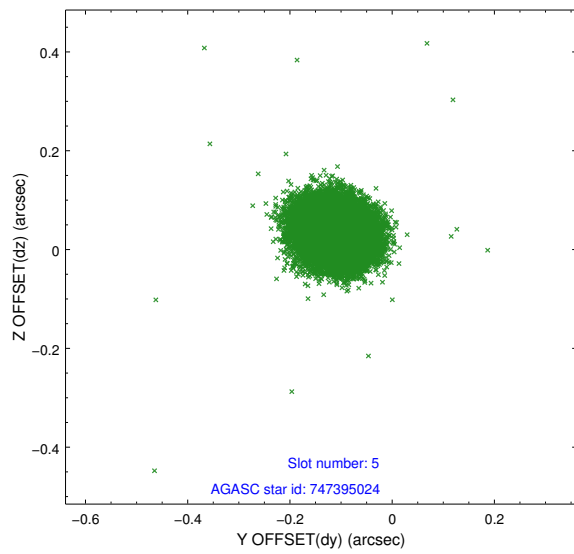
2.4.1 Slot 3



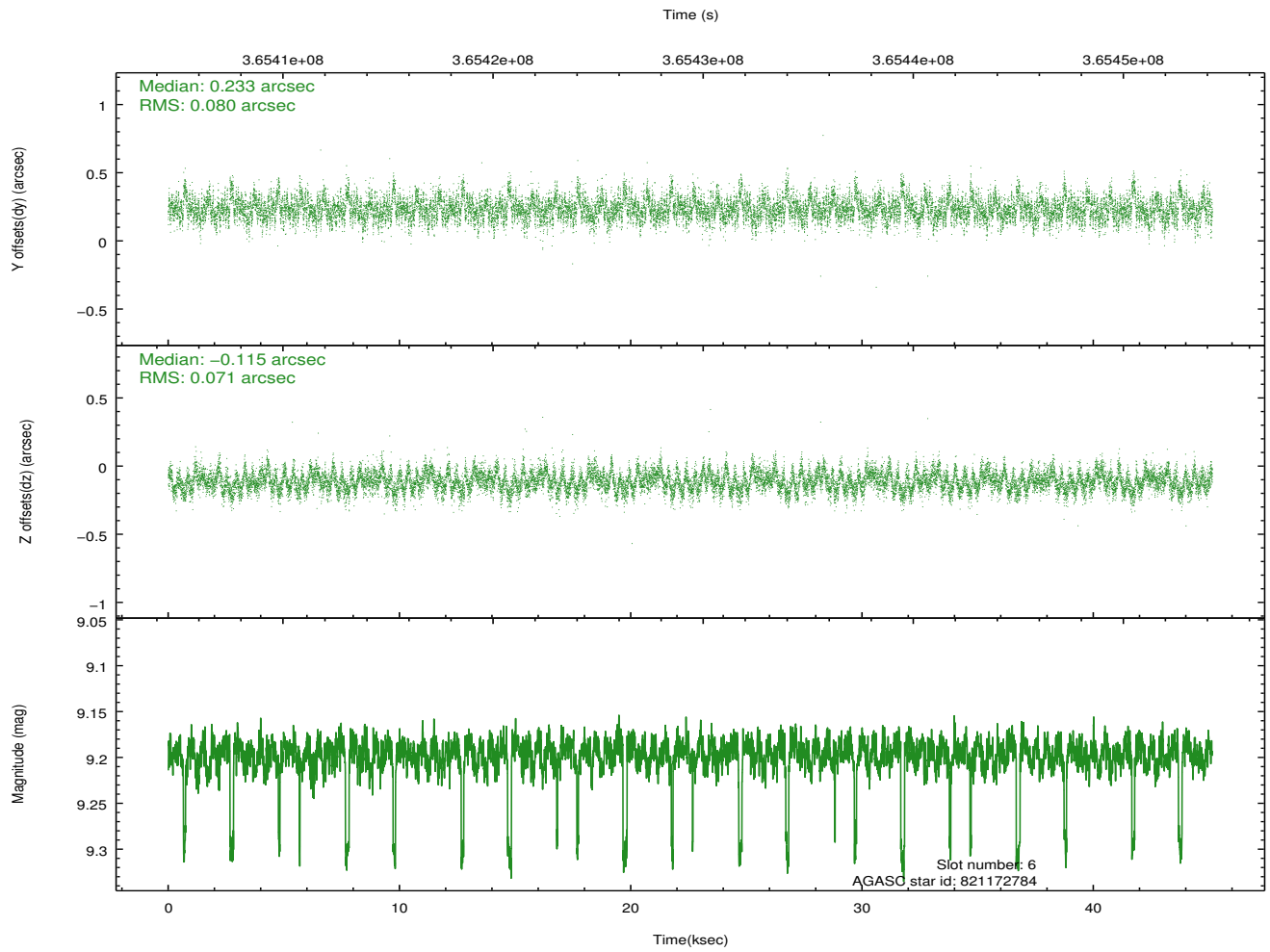
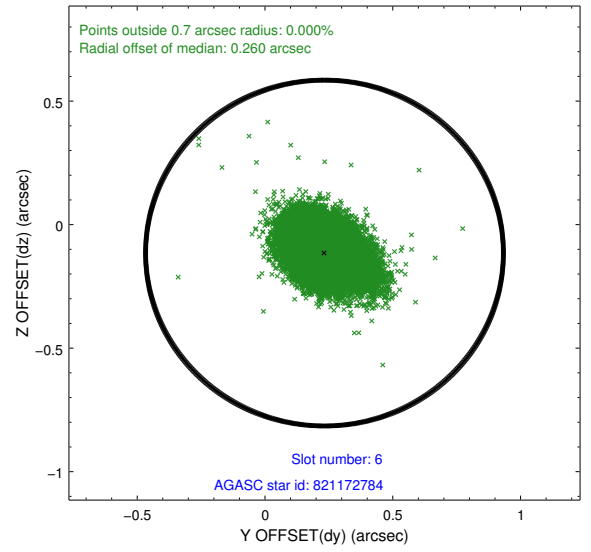
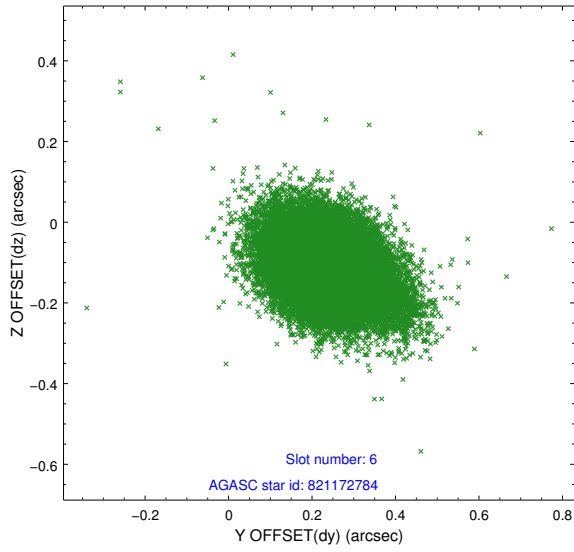
2.4.2 Slot 4



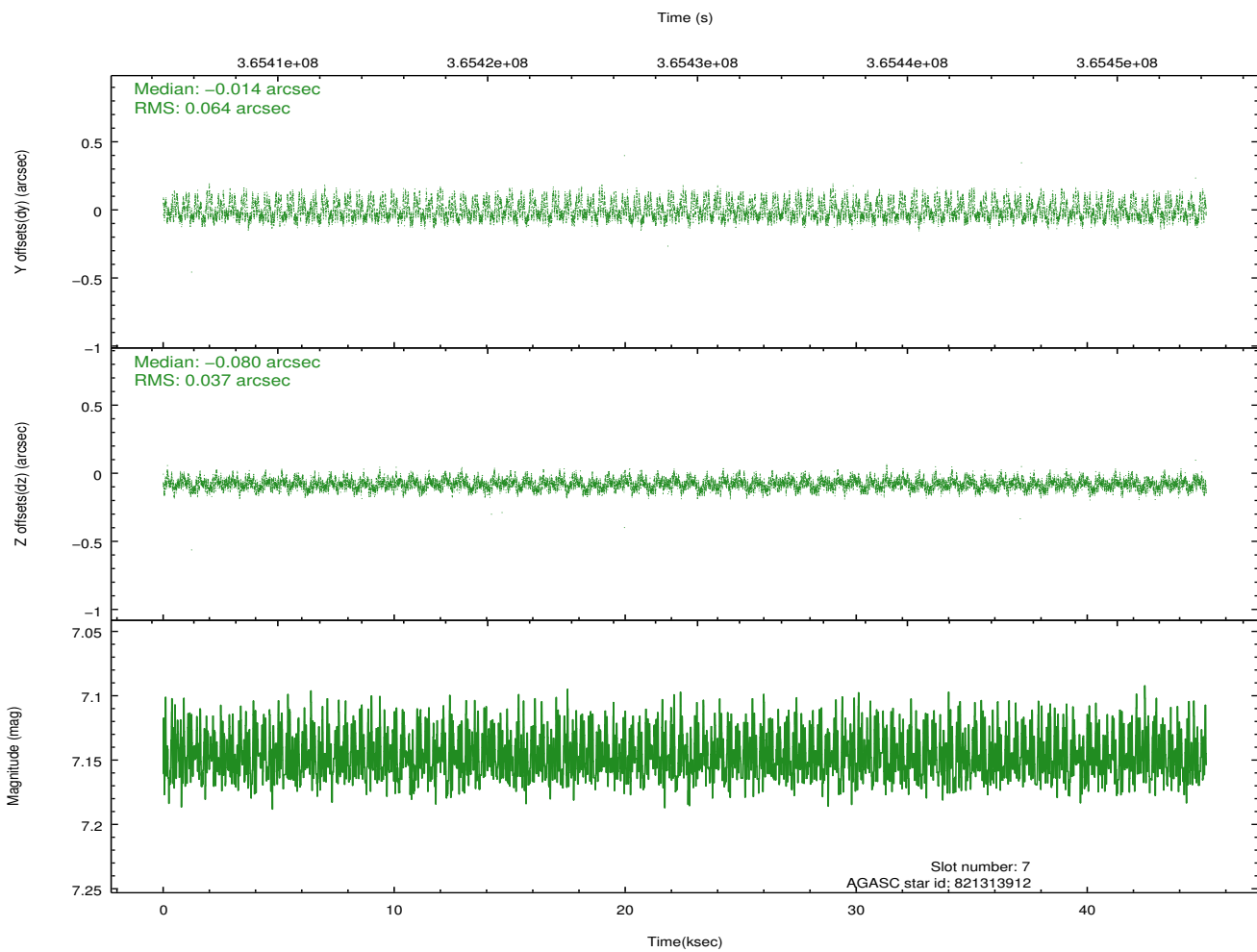
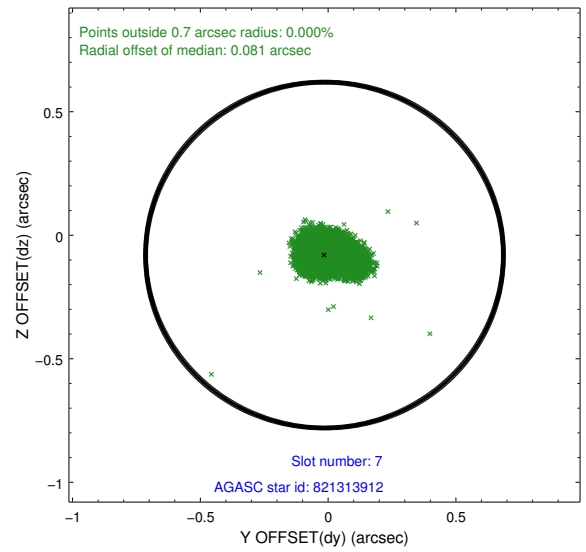
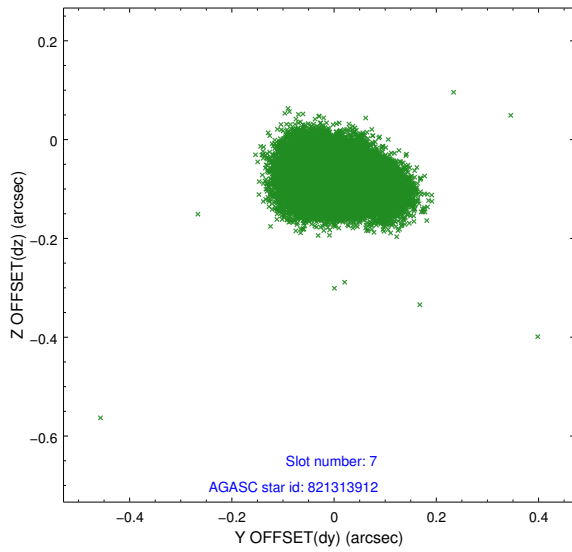
2.4.3 Slot 5



2.4.4 Slot 6

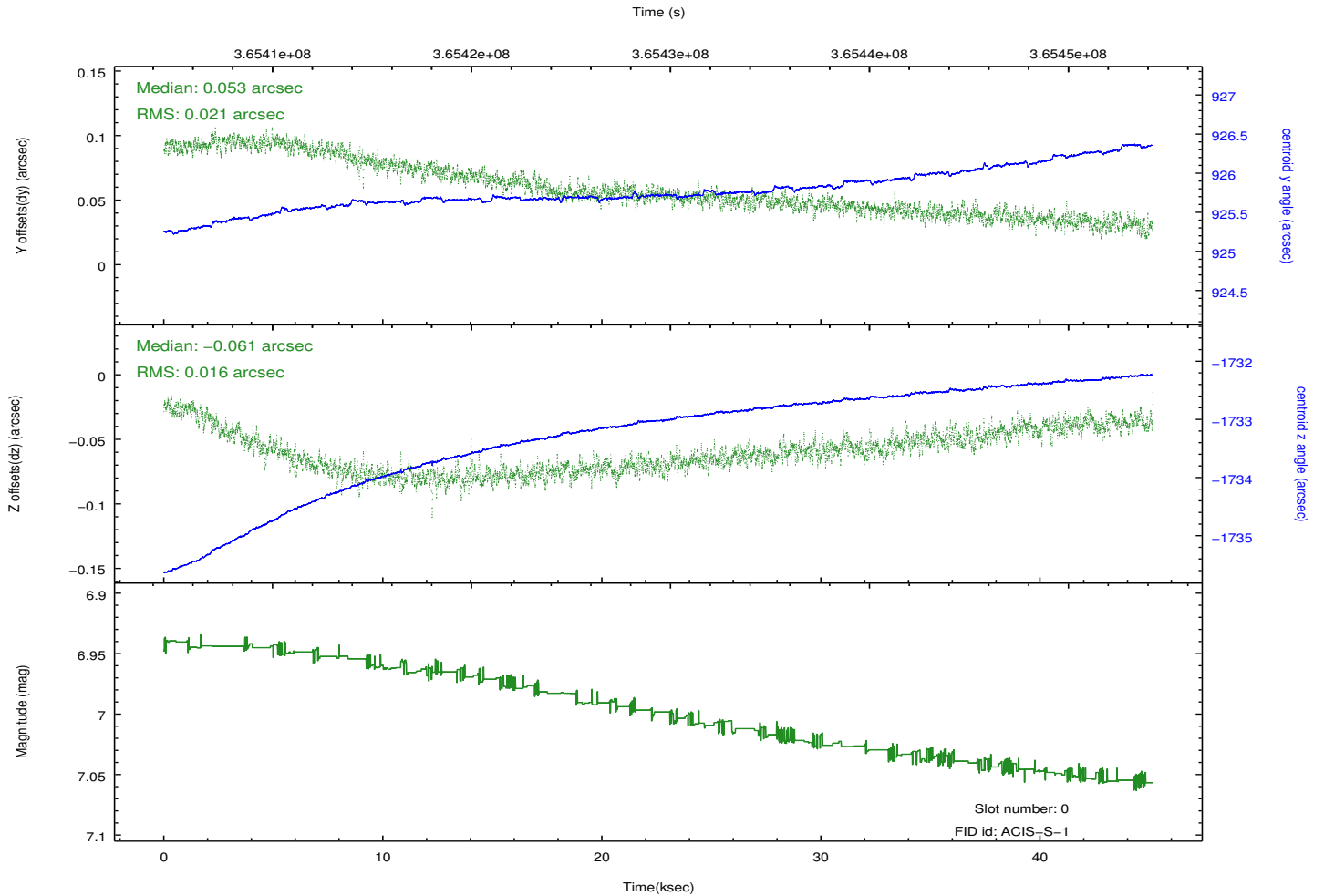
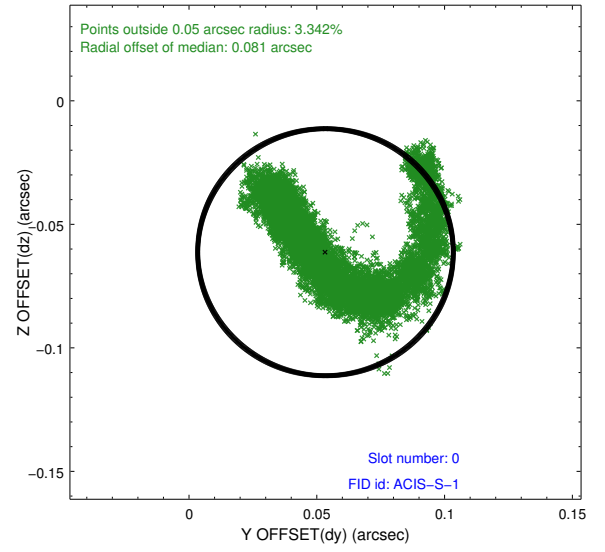
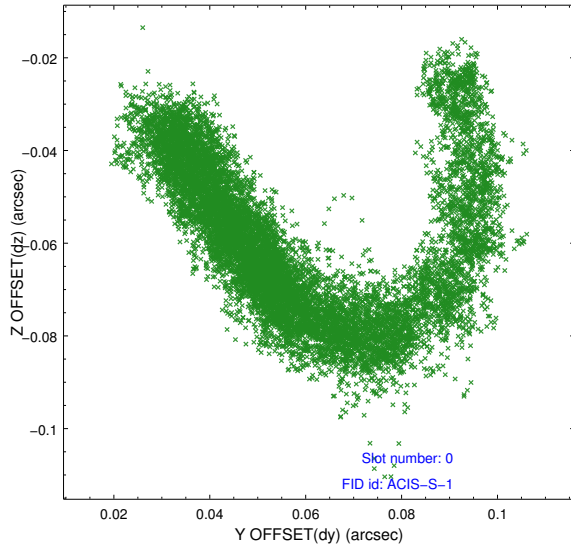


2.4.5 Slot 7

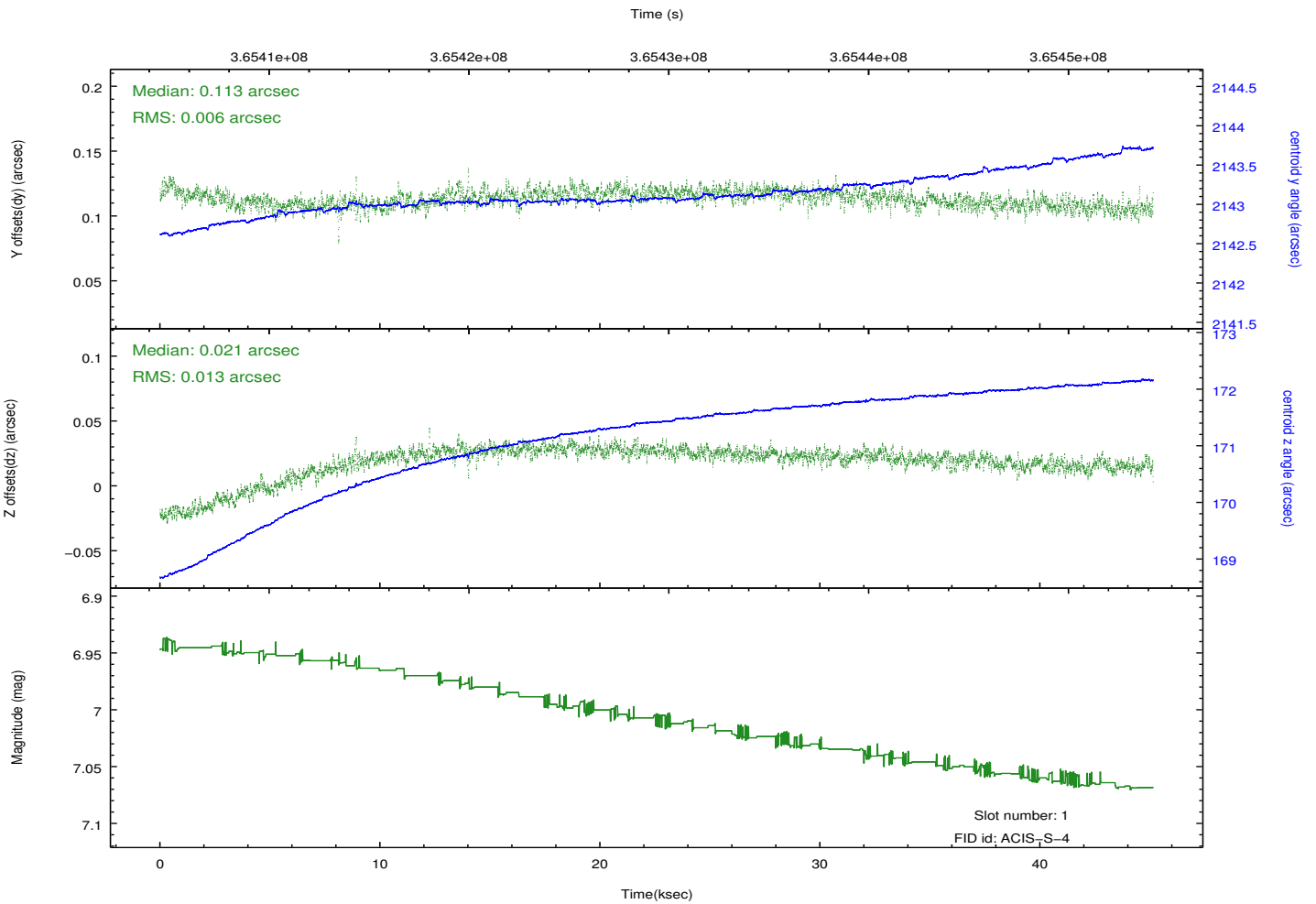
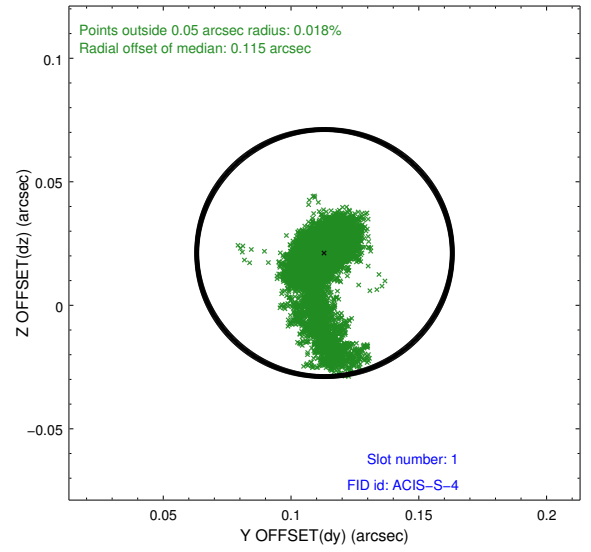
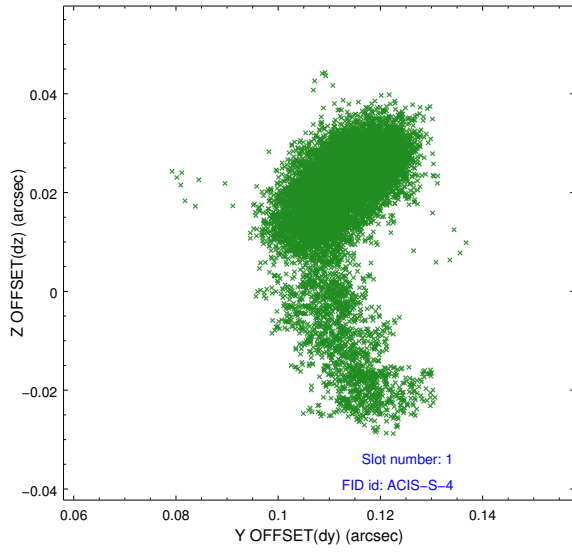


2.5 FID Slots

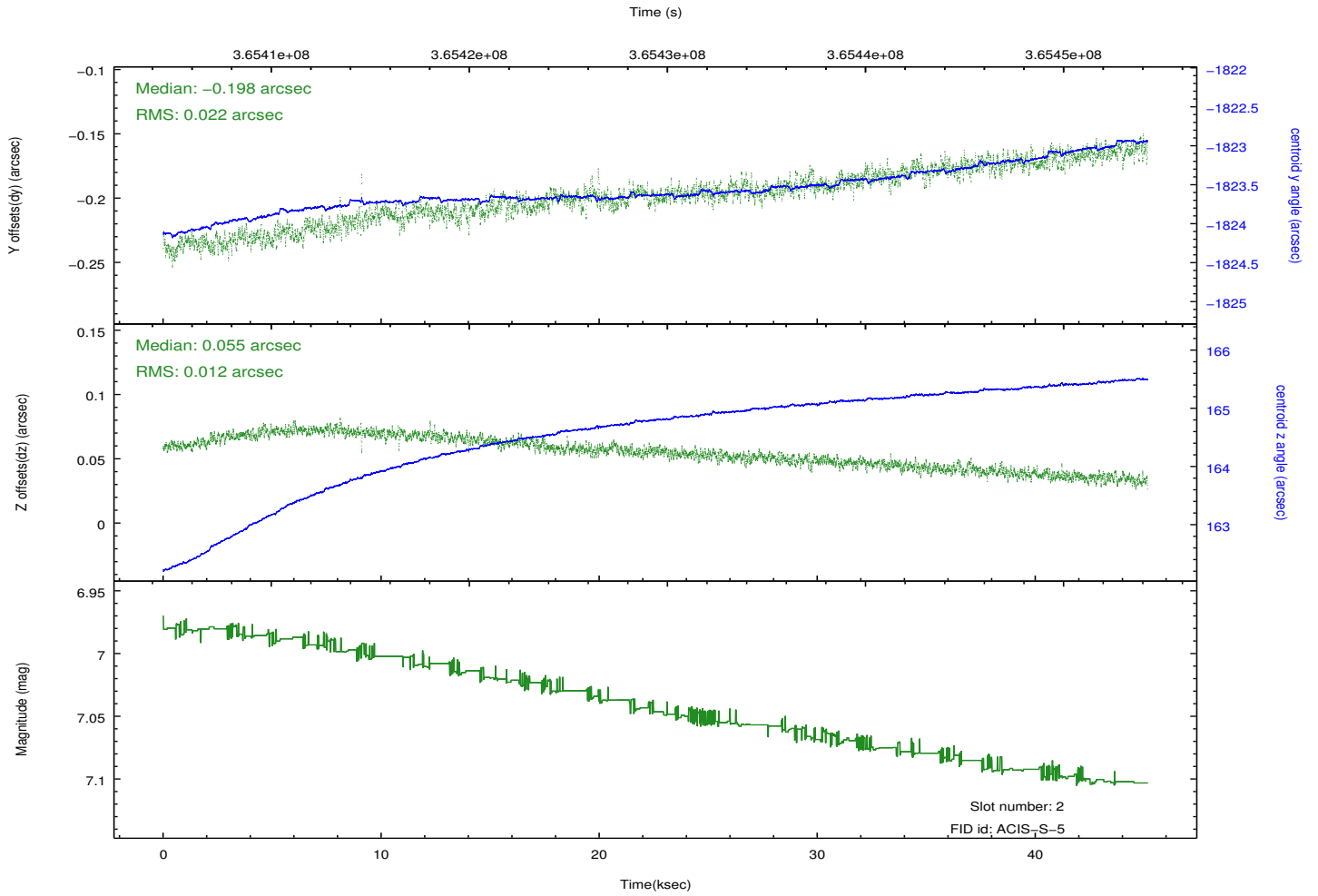
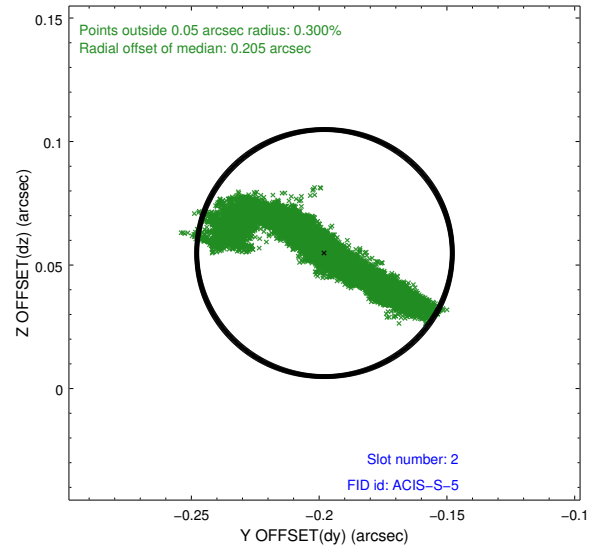
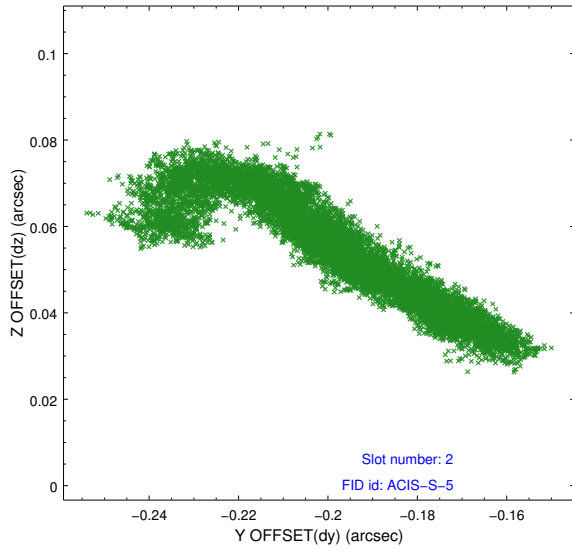
2.5.1 Slot 0



2.5.2 Slot 1



2.5.3 Slot 2



A Summary

A.1 Status

V&V Scientist	Joy Nichols
V&V Date (YYYY-MM-DD)	2012.06.13
V&V Edition	1
V&V Disposition and Status	OK
V&V Charge Time	45.1405

A.2 Comments