

V&V Reference Report

L2 ASCDS Version : 8.4.5

Observation 10343 - L2 Version 2
Chandra X-Ray Center

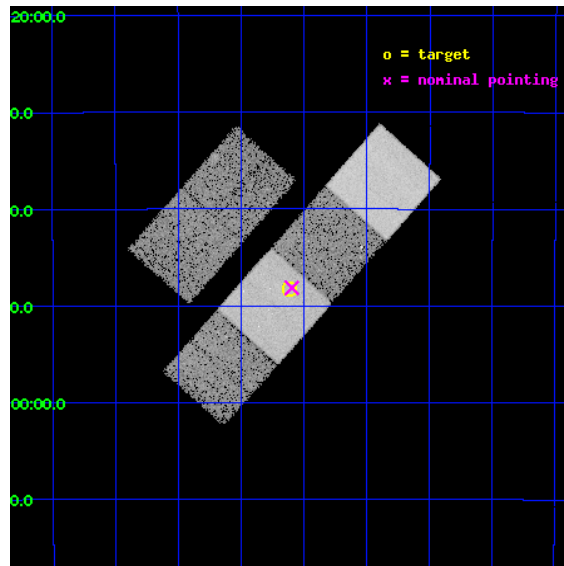
L2 Processing Date : Jun 7 2012

Contents

1	Front	2
2	OBI	3
2.1	OBI	3
2.1.1	Images	3
2.1.2	Bias	3
2.1.3	Parameters	4
2.1.4	Events	4
2.2	Compared Parameters	5
2.3	Aspect	6
2.4	Star Slots	9
2.4.1	Slot 3	9
2.4.2	Slot 4	10
2.4.3	Slot 5	11
2.4.4	Slot 6	12
2.4.5	Slot 7	13
2.5	FID Slots	14
2.5.1	Slot 0	14
2.5.2	Slot 1	15
2.5.3	Slot 2	16
A	Summary	17
A.1	Status	17
A.2	Comments	17

1 Front

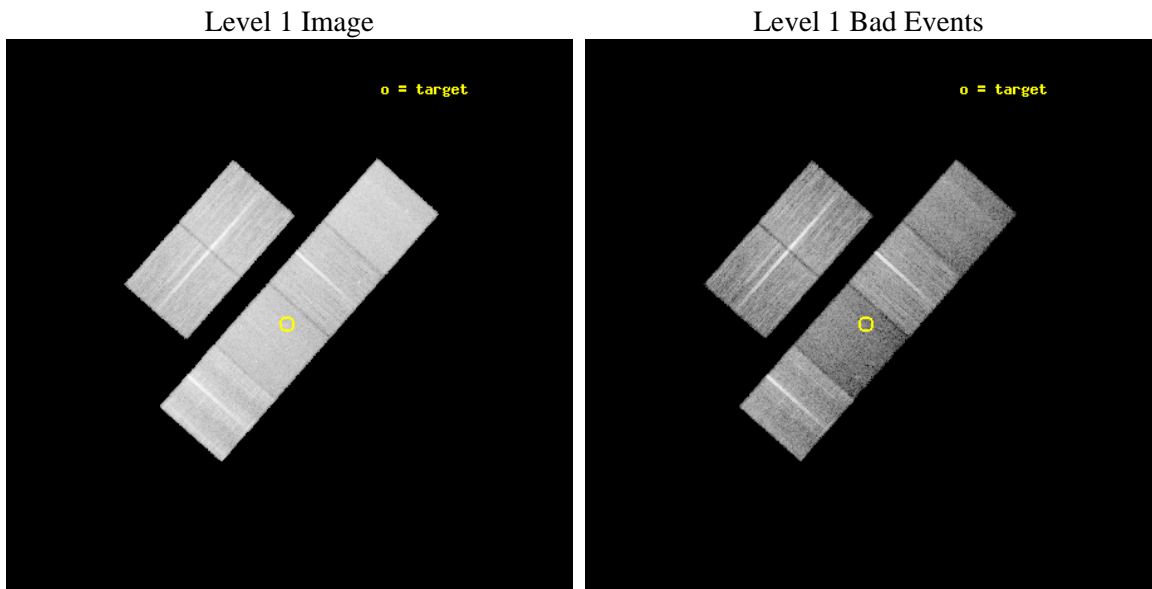
seq_num	701886	Sequence number
obs_id	10343	Observation id
title	Evolution of Activity in Massive Gas-rich Mergers: The X-ray Perspective	Proposal title
observer	Prof. Sylvain Veilleux	Principal investigator
object	F00456-2904	Source name
dtcycle	0	
cycle	P	events from which exps? Prim/Second/Both
ra_targ	12.029167	Observer's specified target RA [deg]
dec_targ	-28.803944	Observer's specified target Dec [deg]
ra_nom	12.023891589447	Nominal RA [deg]
dec_nom	-28.802565787179	Nominal Dec [deg]
roll_nom	131.55308348431	Nominal Roll [deg]
revision	2	Processing version of data
ontime	15039.999944031	Sum of GTIs [s]
livetime	14849.554408739	Livetime [s]
ontime2	15039.999944031	Sum of GTIs [s]
ontime3	15039.999944031	Sum of GTIs [s]
ontime5	15039.999944031	Sum of GTIs [s]
ontime6	15039.999944031	Sum of GTIs [s]
ontime7	15039.999944031	Sum of GTIs [s]
ontime8	15039.999944031	Sum of GTIs [s]
l2events	174442	Number of level 2 events



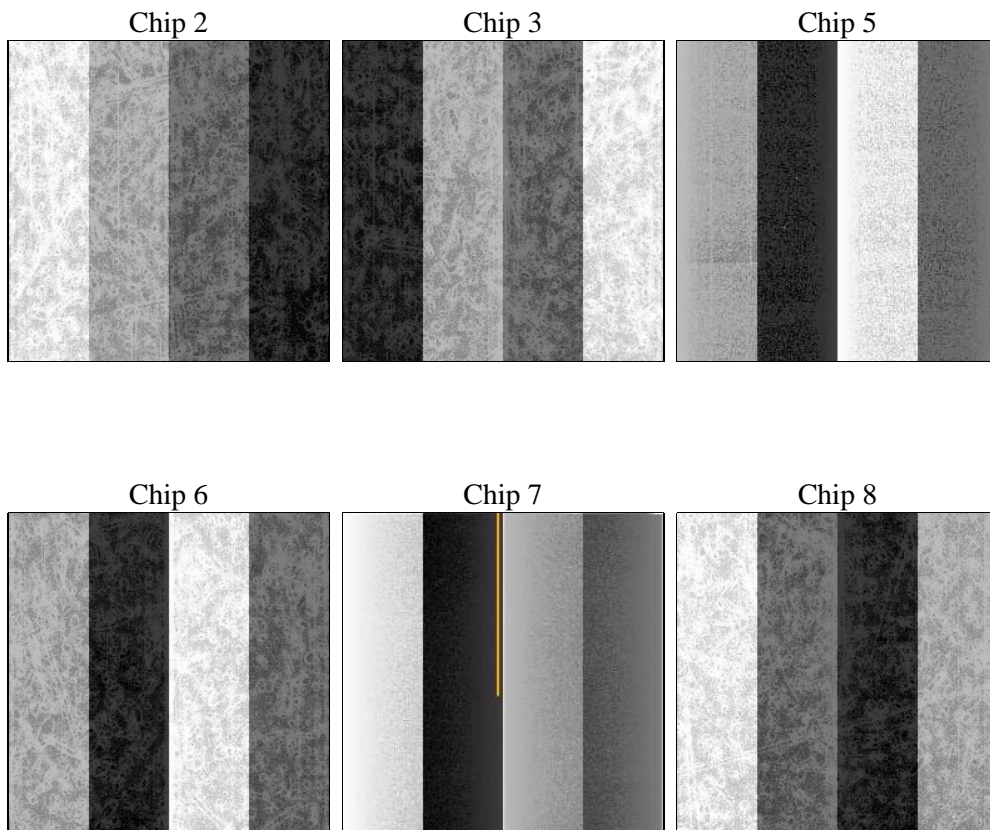
2 OBI

2.1 OBI

2.1.1 Images



2.1.2 Bias



2.1.3 Parameters

obi_num	0	Obi number	sched_exp_time	15000.000000	[s] Scheduled observation exposure time
ascdsver	8.4.5	Processing system revision	ontime	15039.999944031	Sum of GTIs [s]
caldbver	4.4.10	 	ontime2	15039.999944031	Sum of GTIs [s]
date	2012-06-07T16:07:28	Date and time of file creation	ontime3	15039.999944031	Sum of GTIs [s]
revision	2	Processing version of data	ontime5	15039.999944031	Sum of GTIs [s]
			ontime6	15039.999944031	Sum of GTIs [s]
			ontime7	15039.999944031	Sum of GTIs [s]
			ontime8	15039.999944031	Sum of GTIs [s]
			l1events	789914	Number of level 1 events

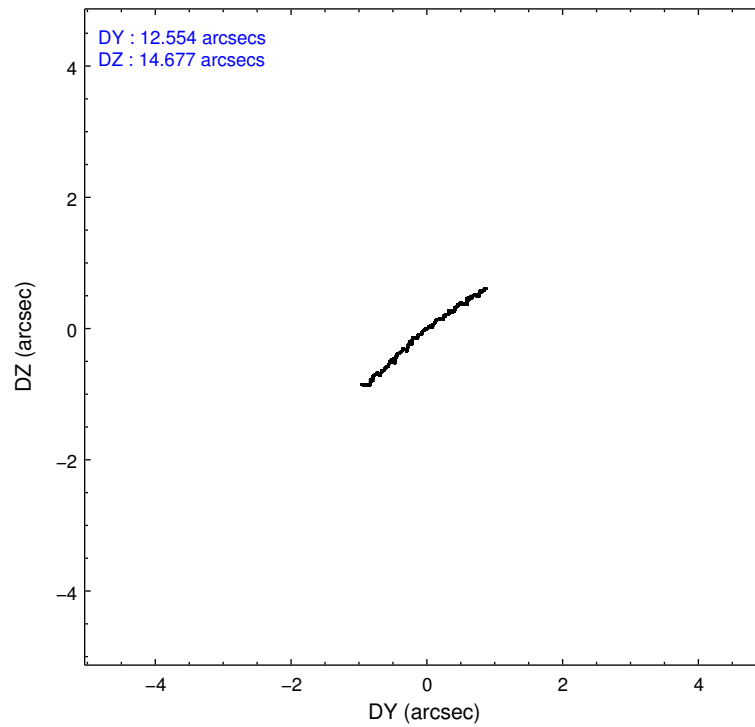
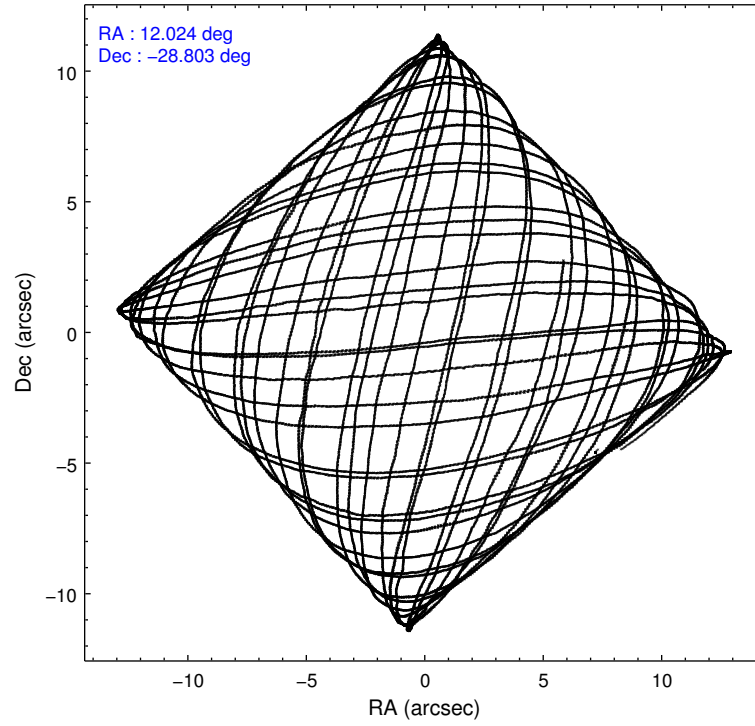
2.1.4 Events

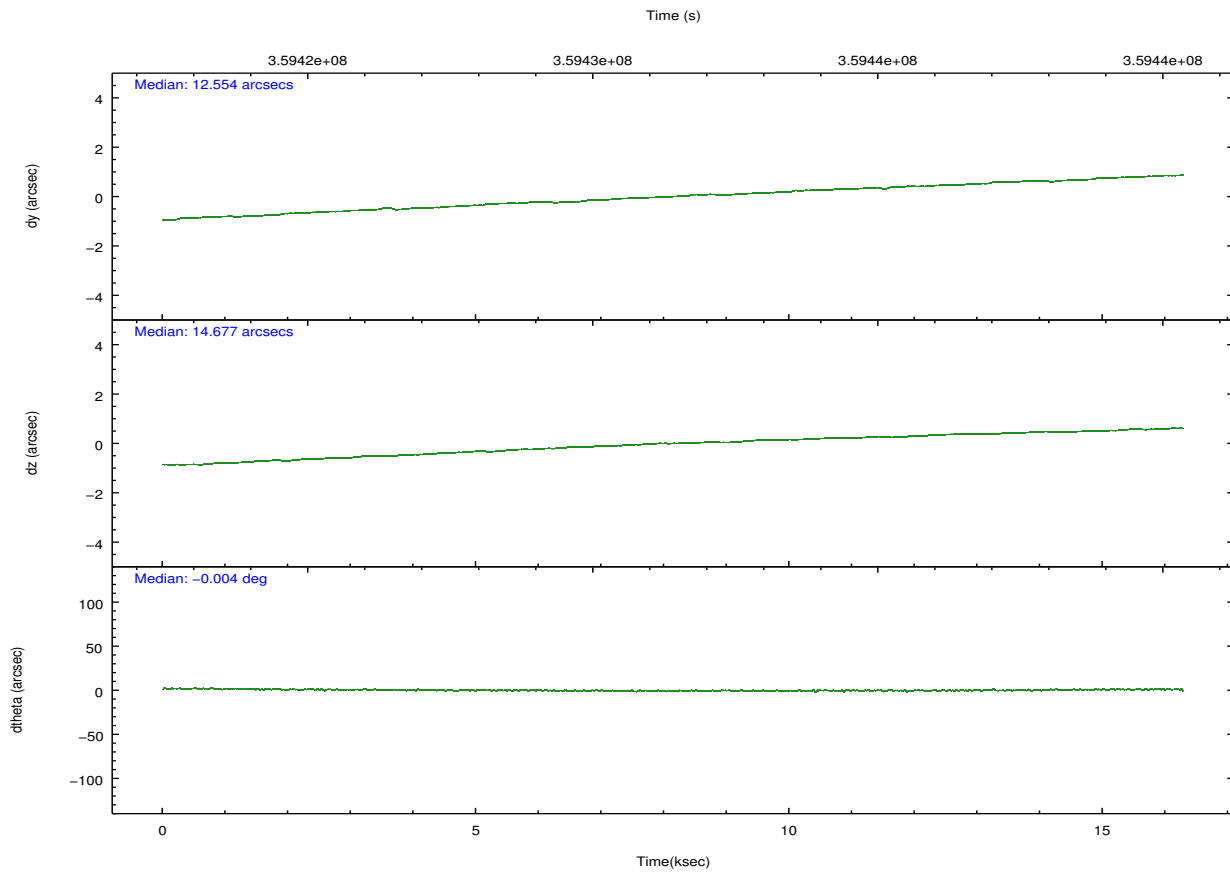
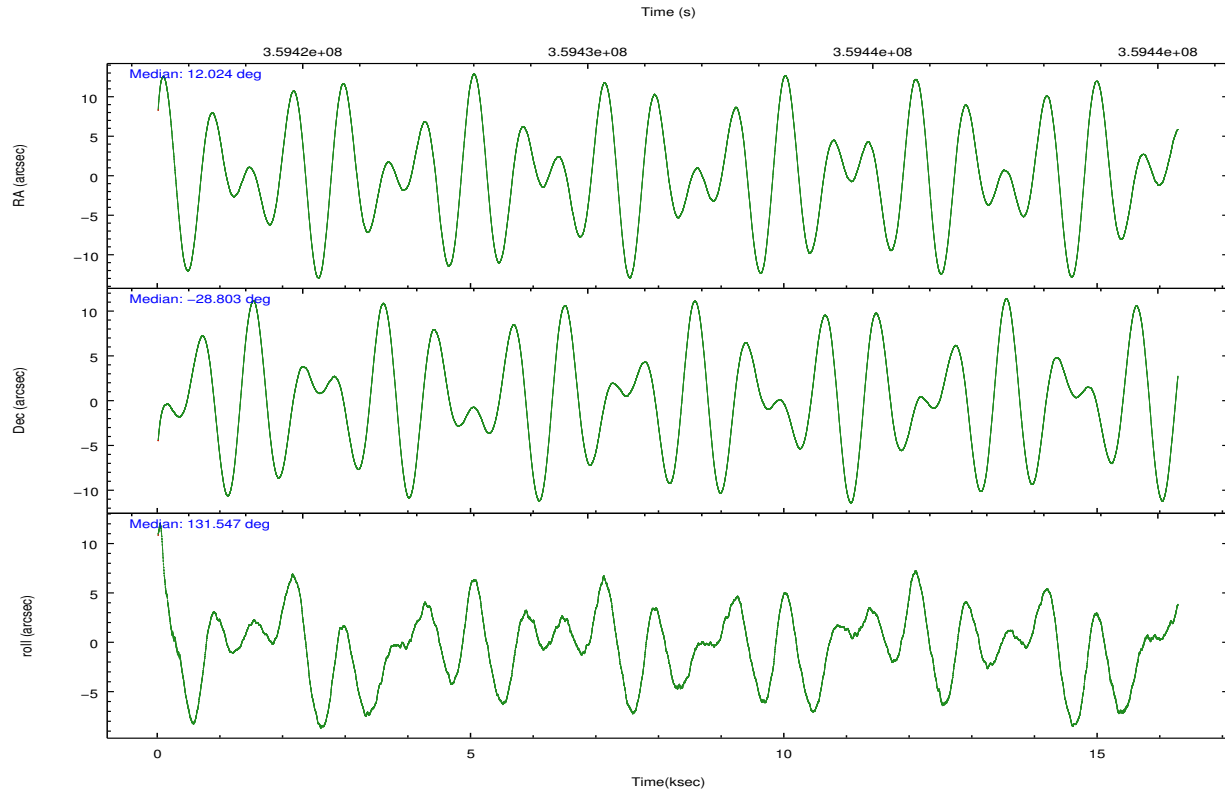
	ccd 2	ccd 3	ccd 5	ccd 6	ccd 7	ccd 8		ccd 2	ccd 3	ccd 5	ccd 6	ccd 7	ccd 8
level 1 events	132285	115852	150748	120965	117875	152189	grade 0 events	4488	3990	5621	4762	6109	10664
rejected events	120343	104729	72459	108322	59535	113290		3%	3%	3%	3%	5%	7%
rejected %	90%	90%	48%	89%	50%	74%	grade 1 events	78	61	315	65	188	133
								0%	0%	0%	0%	0%	0%
							grade 2 events	3032	2430	24733	2832	12472	9139
								2%	2%	16%	2%	10%	6%
							grade 3 events	1145	1271	3388	1329	5698	4443
								0%	1%	2%	1%	4%	2%
							grade 4 events	1237	1306	3386	1280	5447	3990
								0%	1%	2%	1%	4%	2%
							grade 5 events	3522	4280	12314	4138	12416	6432
								2%	3%	8%	3%	10%	4%
							grade 6 events	2041	2130	41175	2444	28626	10690
								1%	1%	27%	2%	24%	7%
							grade 7 events	116742	100384	59816	104115	46919	106698
								88%	86%	39%	86%	39%	70%

2.2 Compared Parameters

Parameter	Planned	Actual	Parameter	Planned	Actual
Instrument	ACIS	ACIS	Obspar format version number	7	7
Detector	ACIS-235678	ACIS-235678	Obspar file type	PREDICTED	ACTUAL
Grating	NONE	NONE	Obspar update status	NONE	UPDATED
Data mode	VFAINT	VFAINT	CCD I0 on	N	N
Observation mode	POINTING	POINTING	CCD I1 on	N	N
[deg] Pointing RA	12.053597	12.02389158944709	CCD I2 on	O1	Y
[deg] Pointing Dec	-28.810840	-28.80256578717921	CCD I3 on	O2	Y
[deg] Pointing Roll	131.410770	131.553083484312	CCD S0 on	N	N
[mm] SIM focus pos	-0.684267	-0.6828225247311905	CCD S1 on	O3	Y
[mm] SIM defocus	0	0.001444936568705701	CCD S2 on	O4	Y
[mm] SIM translation stage pos	-190.132523	-190.1400660498719	CCD S3 on	Y	Y
[mm] SIM translation stage offset	0	0.00754346686406393	CCD S4 on	O5	Y
[s] Observation start time (MET)	359424554.184000	359423004.79448	CCD S5 on	N	N
Observation start date	2009-05-23T00:08:08	2009-05-22T23:43:24	Number of optional ACIS chips dropped	0	0
[s] Observation end time (MET)	359439554.184000	359440471.30785	On-chip summing requested	N	N
Observation end date	2009-05-23T04:18:08	2009-05-23T04:34:31	Subarray requested	NONE	NONE
Read mode	TIMED	TIMED	Alternating exposures requested	N	N
			[s] Primary exposure time	0.000000	3.2

2.3 Aspect



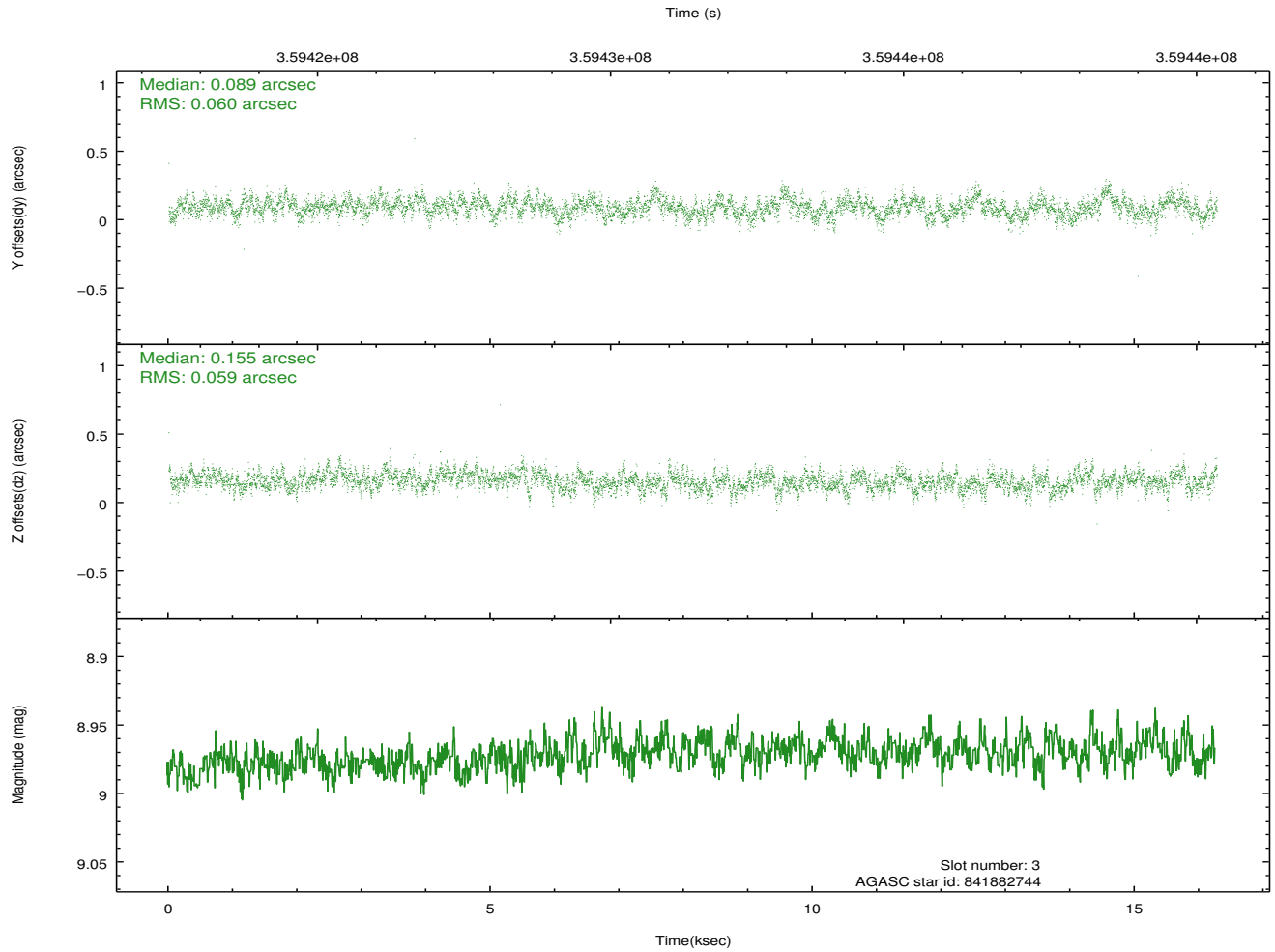
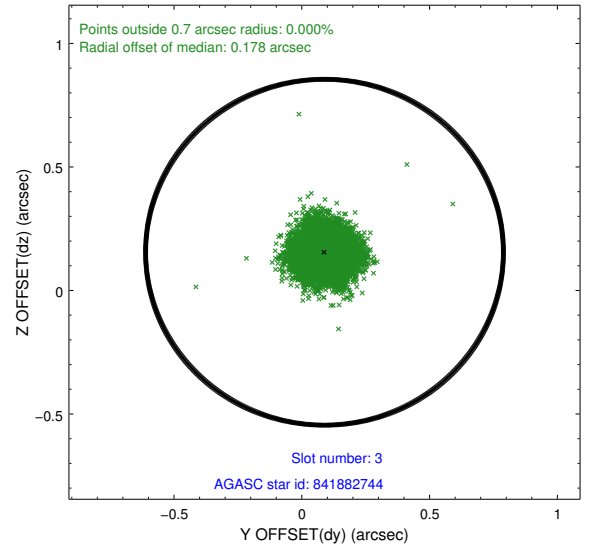
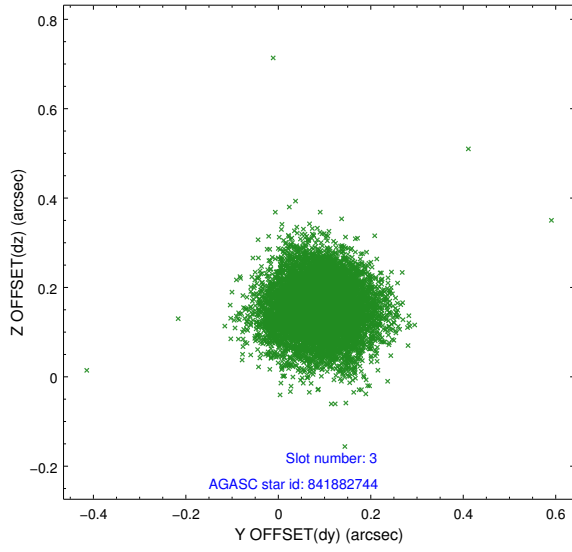


Slot Statistics

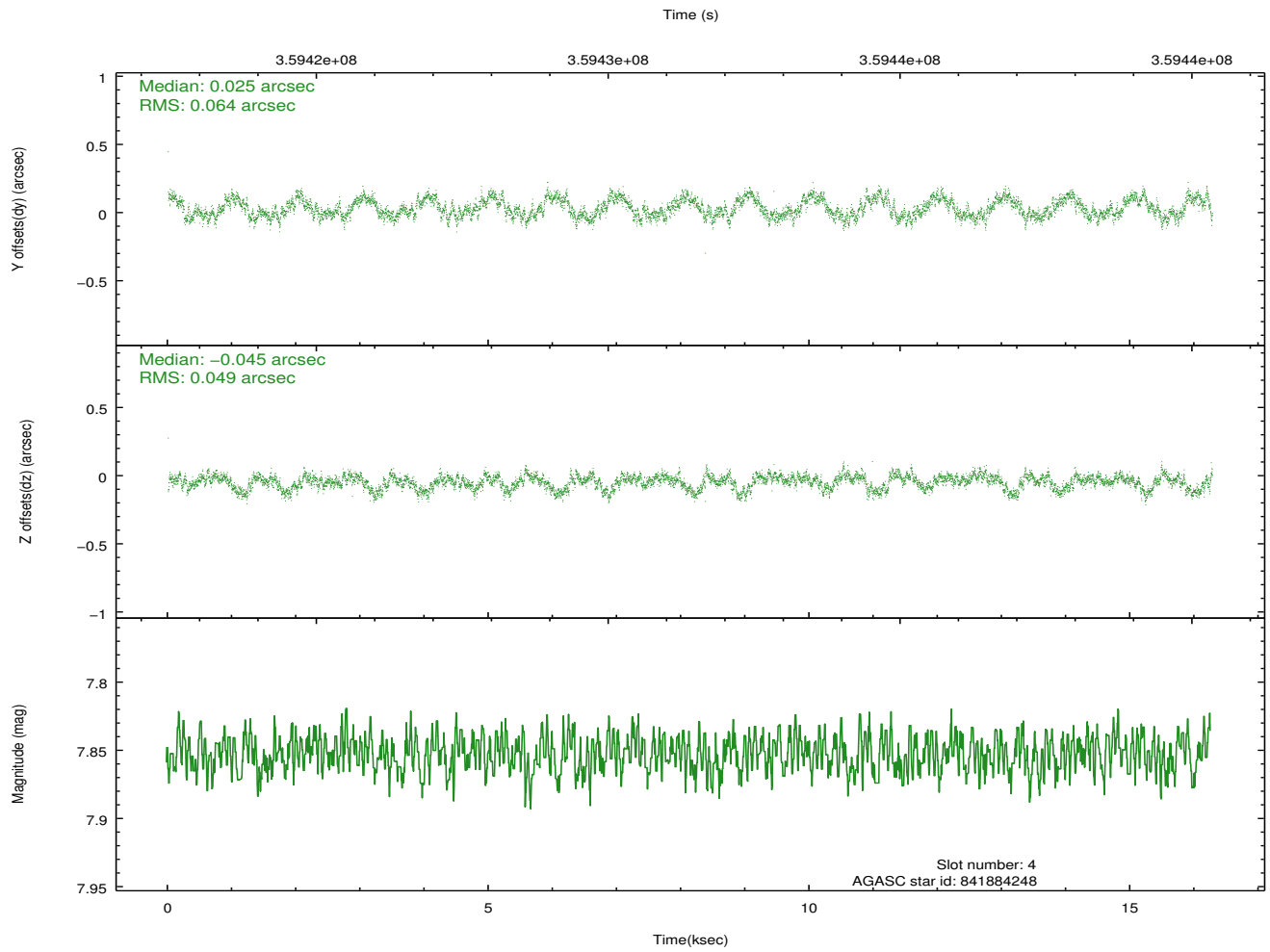
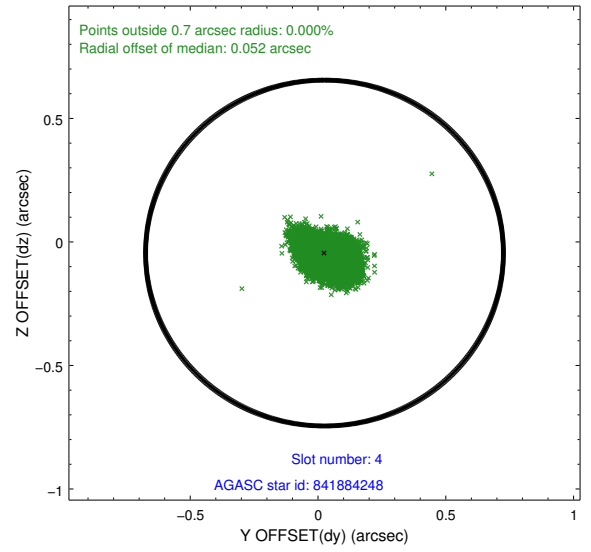
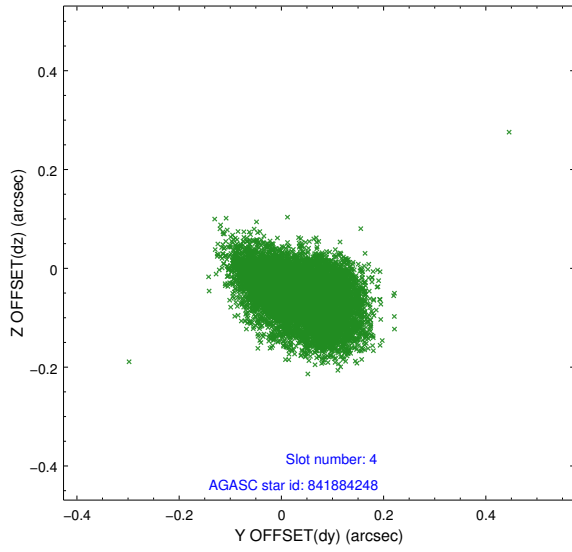
slot	status	id	mag	n_pts	med_dy	med_dz	dr1	dr2	ra	dec	mean_y	mean_z
0	FID	ACIS-S-2	6.86	3970	-0.047	-0.014	0.018	0.030	0.000000	0.000000	-765.48	-1736.00
1	FID	ACIS-S-4	6.94	3969	0.067	0.023	0.011	0.018	0.000000	0.000000	2147.78	172.26
2	FID	ACIS-S-6	7.07	3970	-0.048	-0.002	0.012	0.019	0.000000	0.000000	396.83	809.92
3	GUIDE	841882744	8.97	7928	0.089	0.155	0.090	0.144	12.534797	-29.004494	-1526.98	-672.66
4	GUIDE	841884248	7.85	7936	0.025	-0.045	0.087	0.136	11.986408	-29.343870	-1300.14	1426.85
5	GUIDE	841884464	9.16	7929	-0.129	0.011	0.086	0.137	11.629508	-28.553777	1579.38	396.78
6	GUIDE	841885480	7.05	7940	-0.092	0.121	0.070	0.110	12.171963	-28.495433	603.25	-1031.56
7	GUIDE	841885192	9.79	7922	0.104	-0.237	0.150	0.236	11.840840	-29.499483	-1418.95	2139.89

2.4 Star Slots

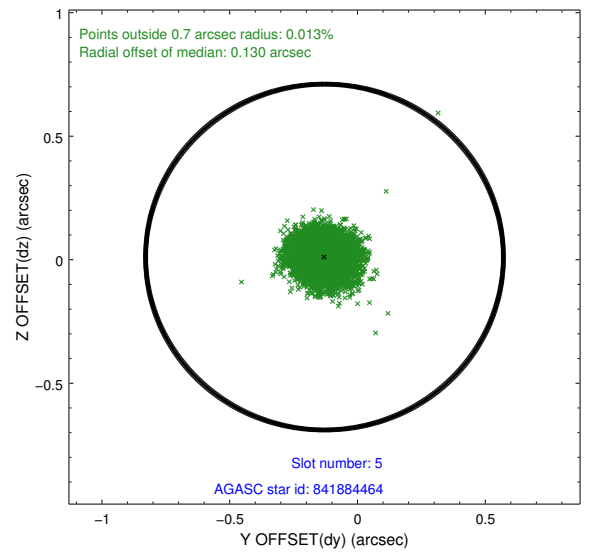
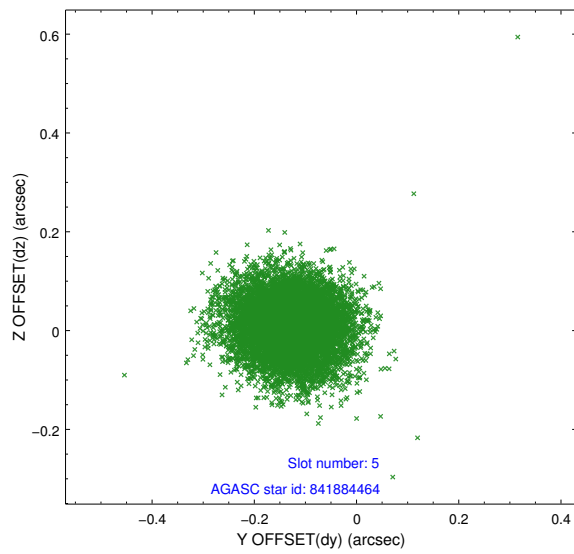
2.4.1 Slot 3



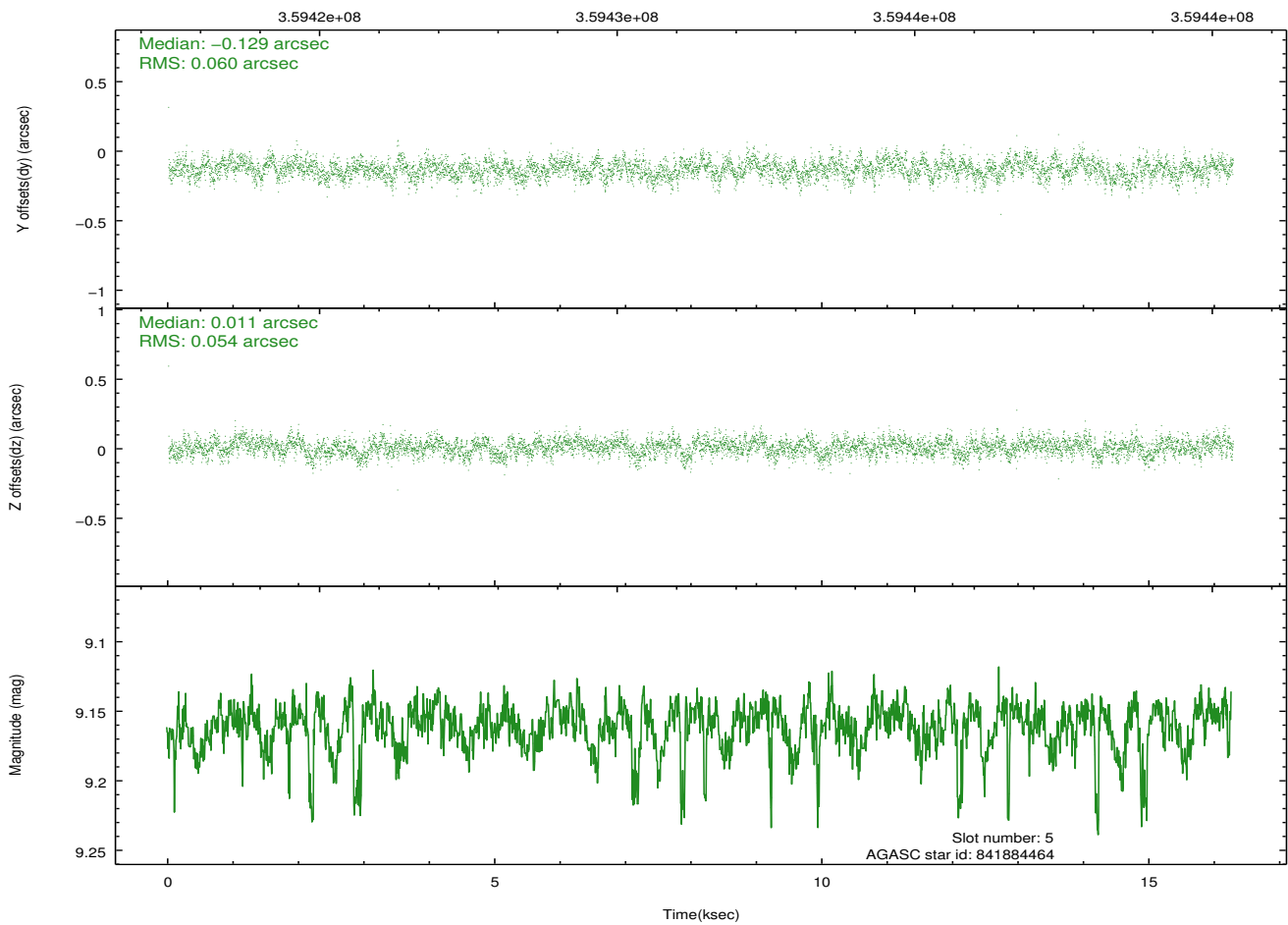
2.4.2 Slot 4



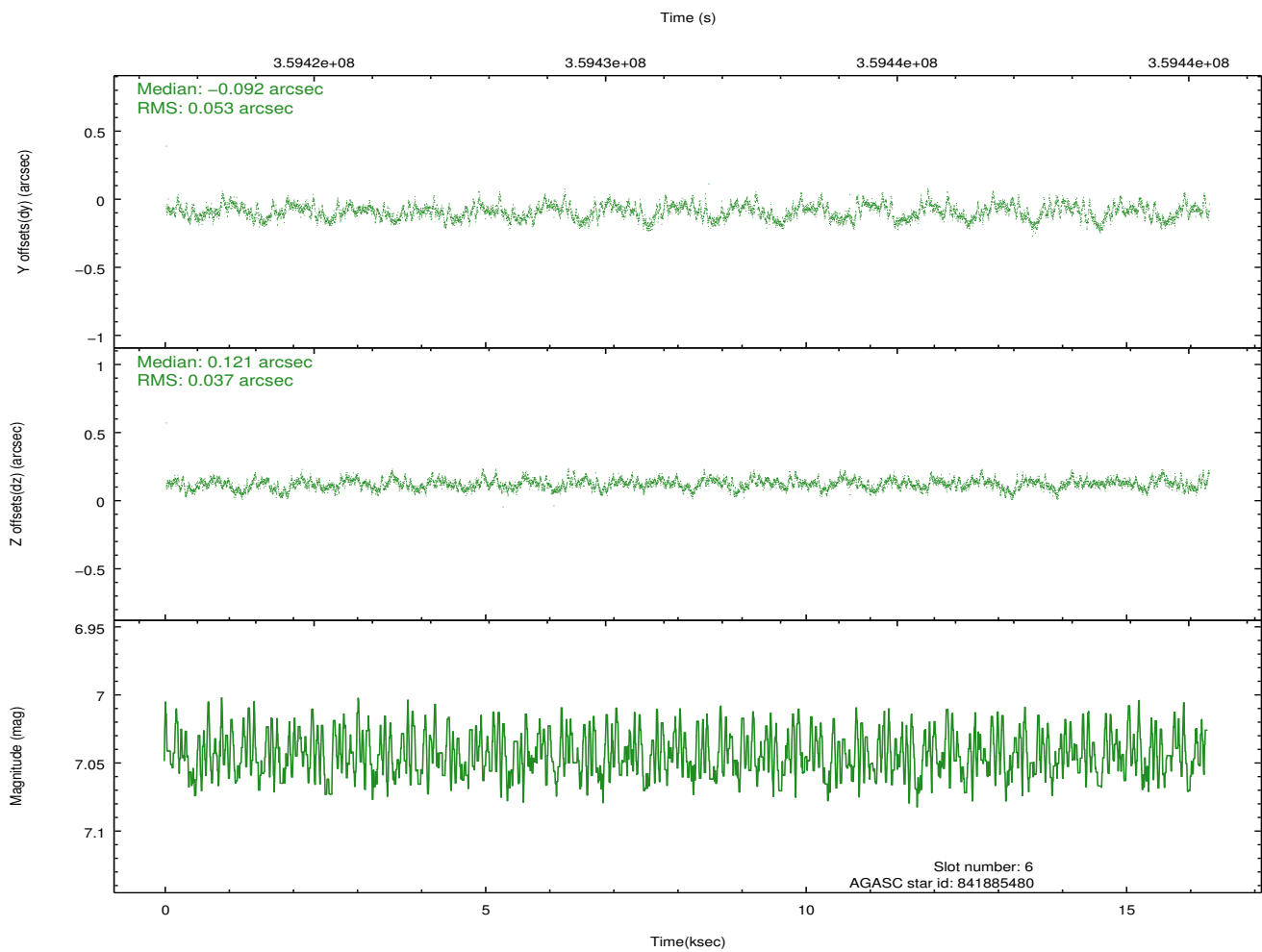
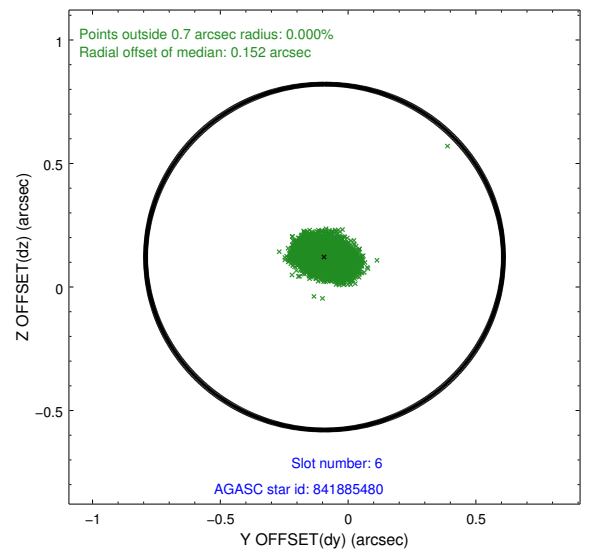
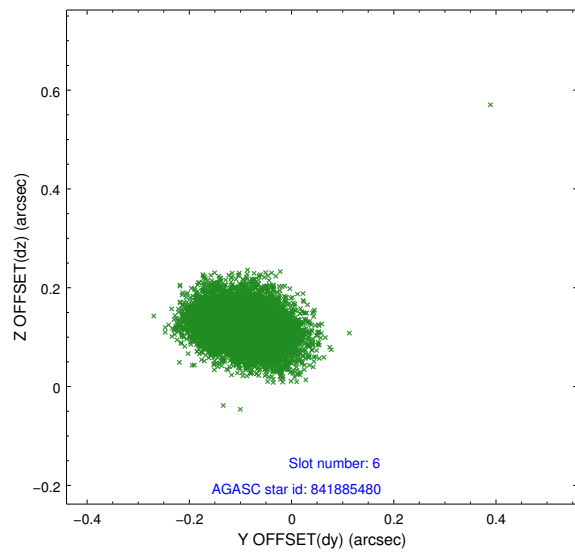
2.4.3 Slot 5



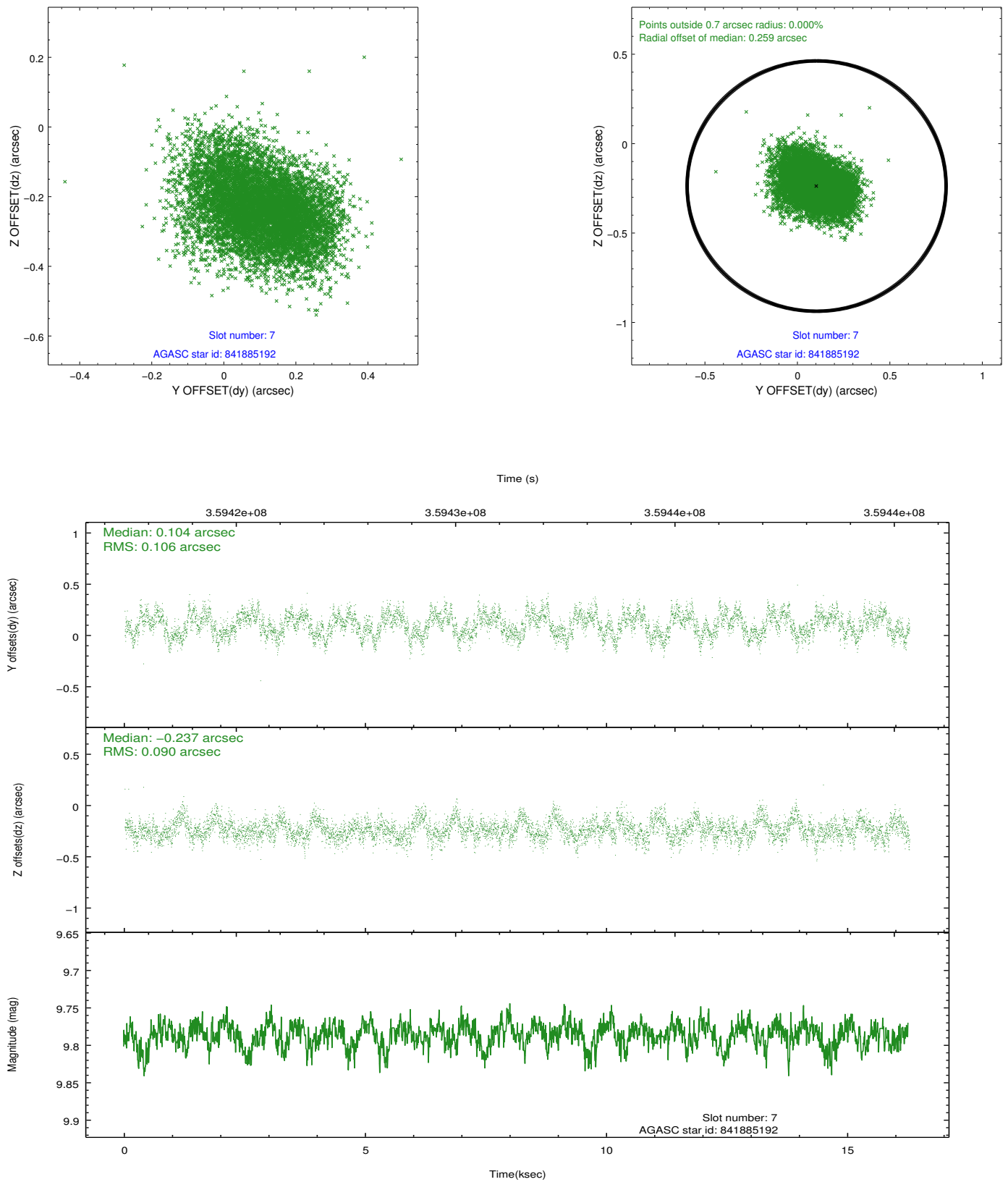
Time (s)



2.4.4 Slot 6

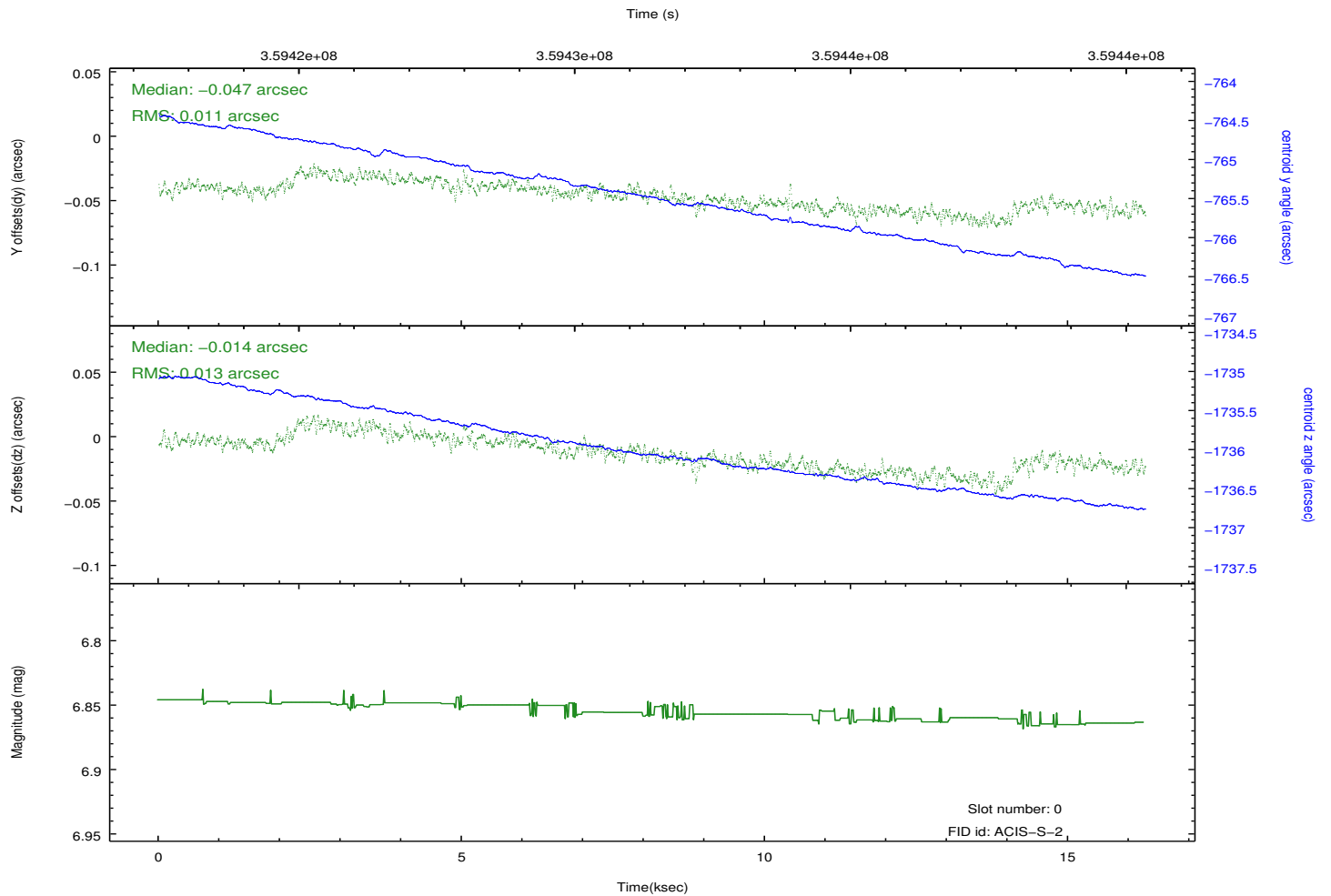
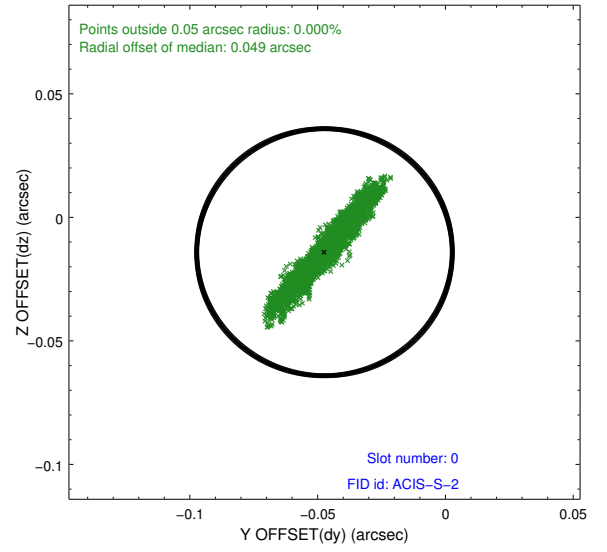
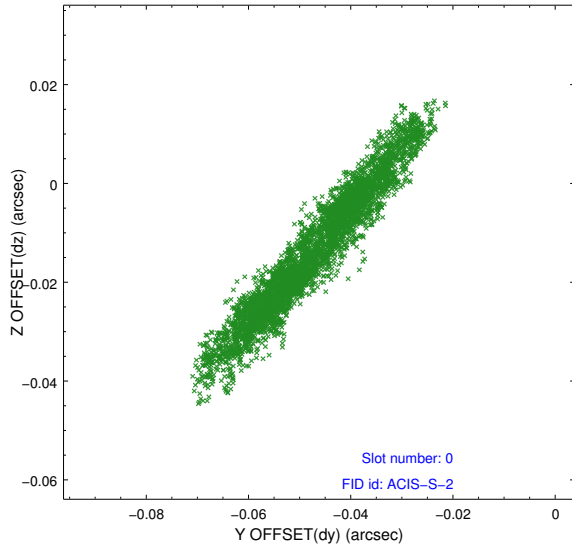


2.4.5 Slot 7

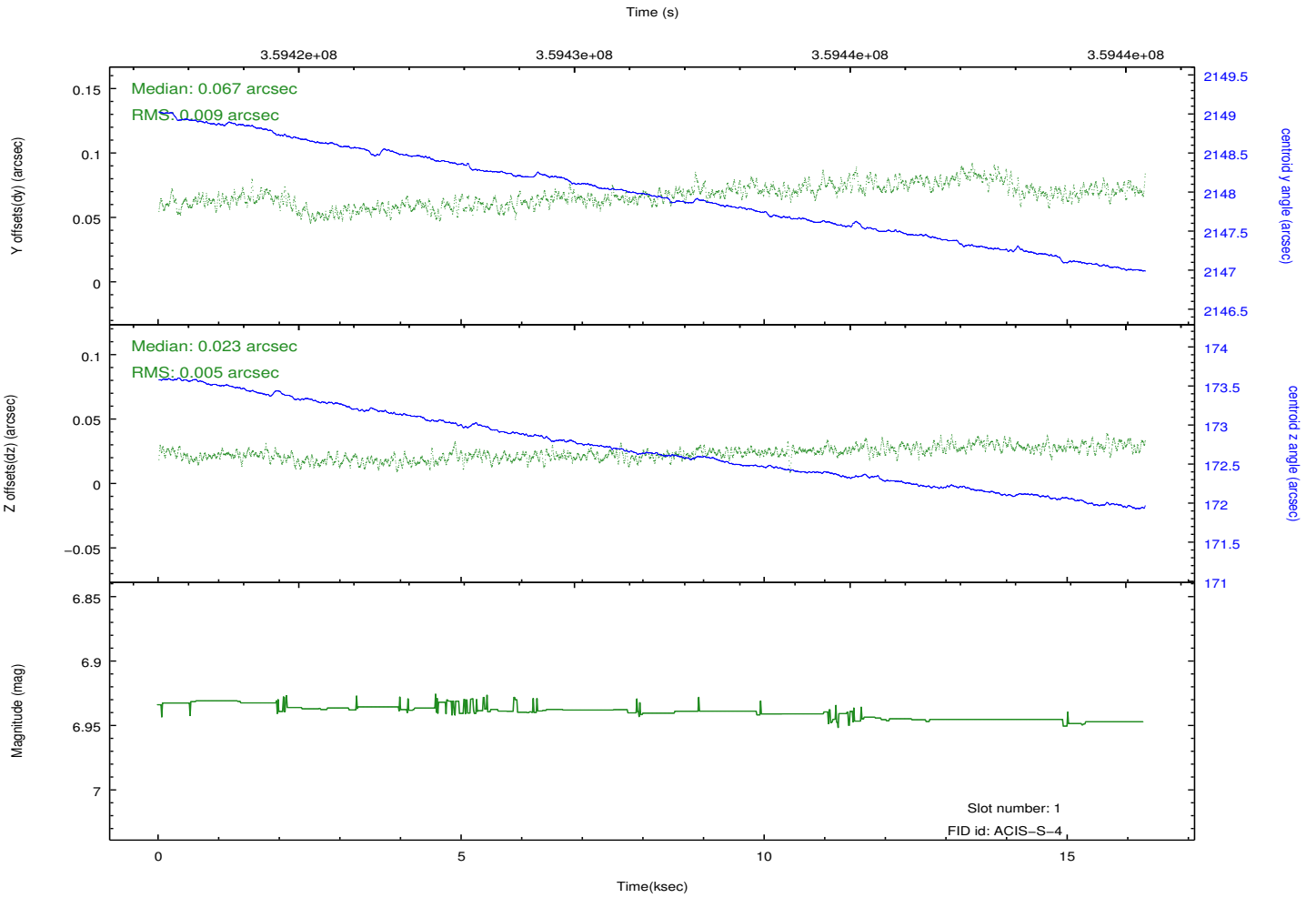
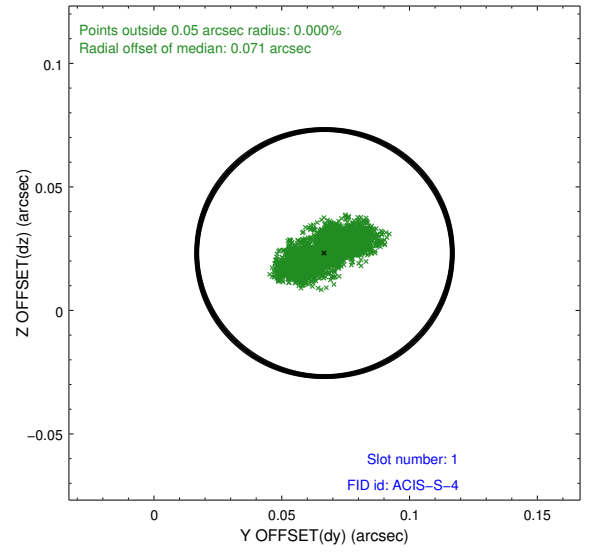
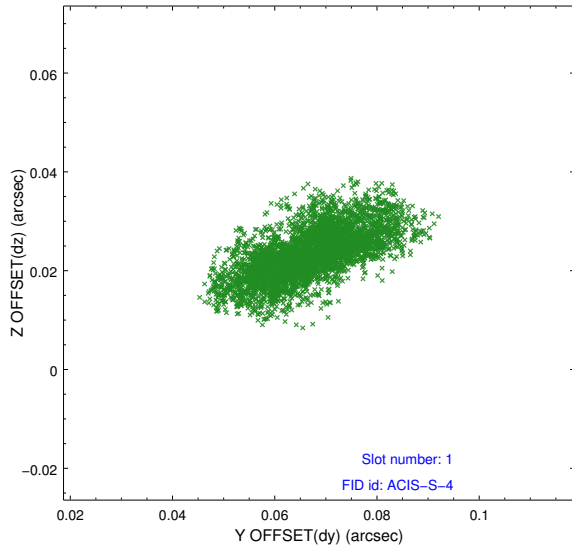


2.5 FID Slots

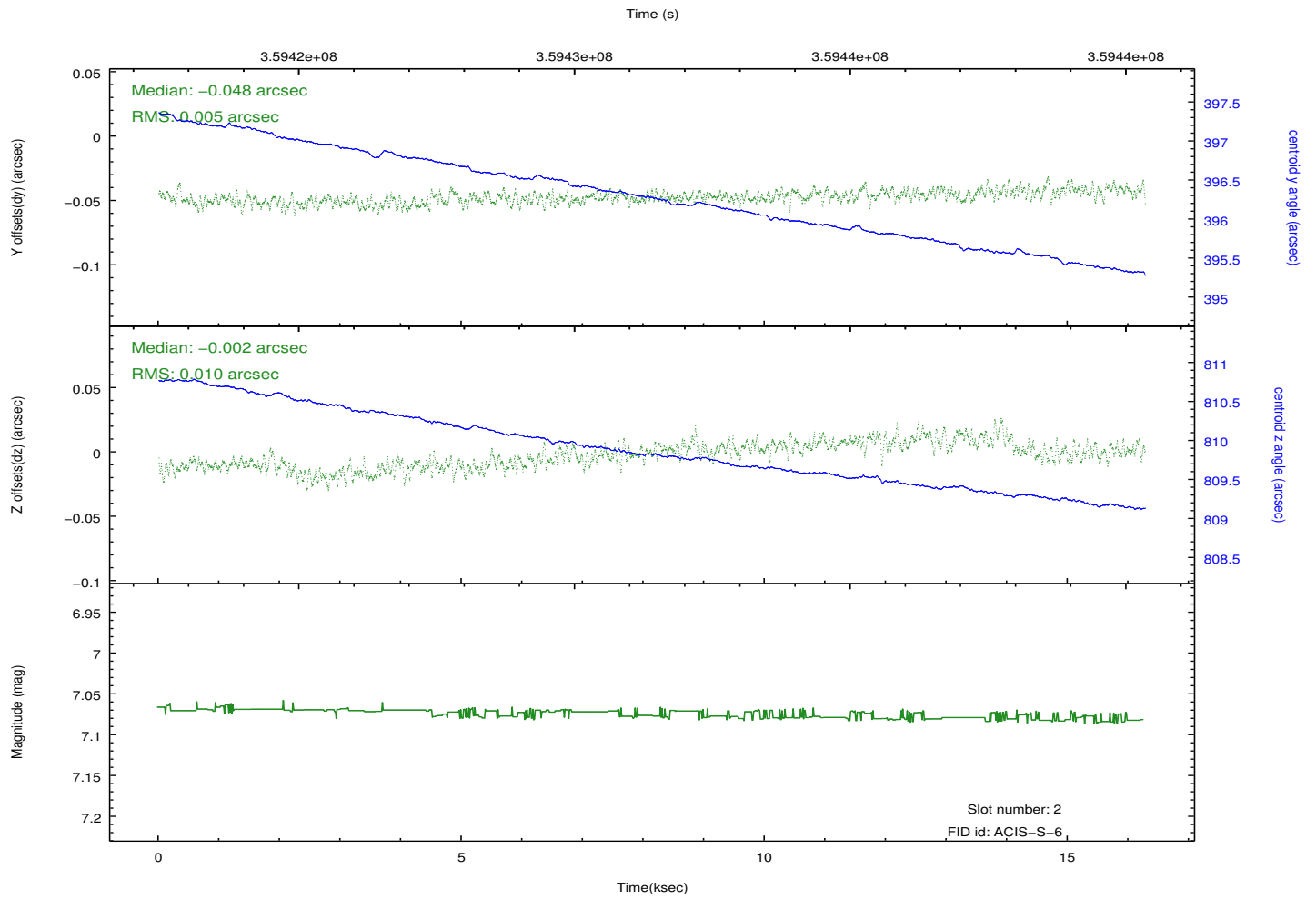
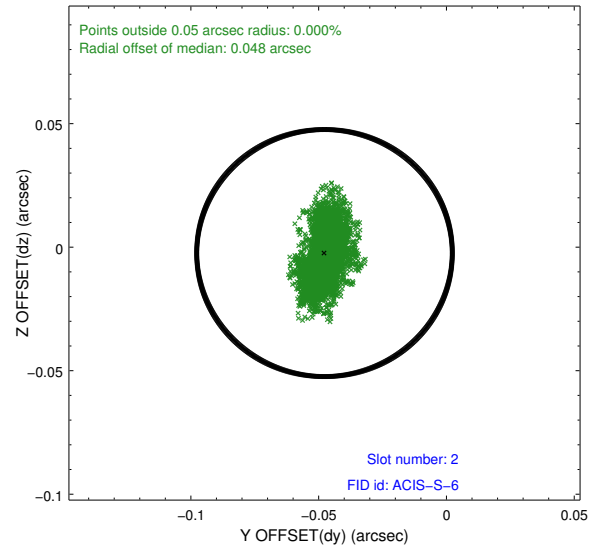
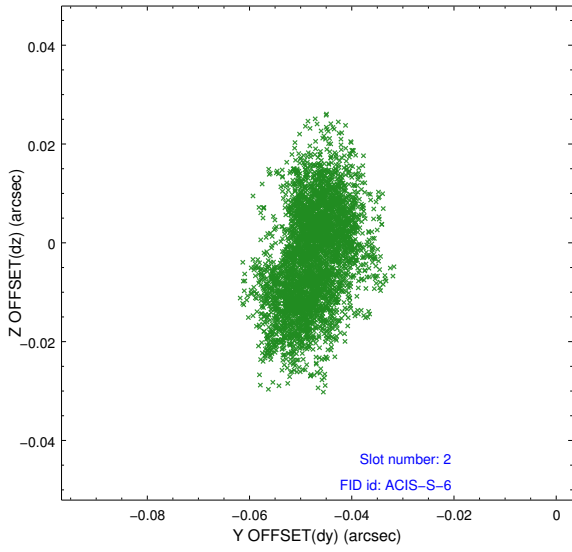
2.5.1 Slot 0



2.5.2 Slot 1



2.5.3 Slot 2



A Summary

A.1 Status

V&V Scientist	Jen Lauer
V&V Date (YYYY-MM-DD)	2012.06.11
V&V Edition	1
V&V Disposition and Status	OK
V&V Charge Time	15.0399999

A.2 Comments