

# V&V Reference Report

## L2 ASCDS Version : 8.4.5

Observation 10443 - L2 Version 2  
Chandra X-Ray Center

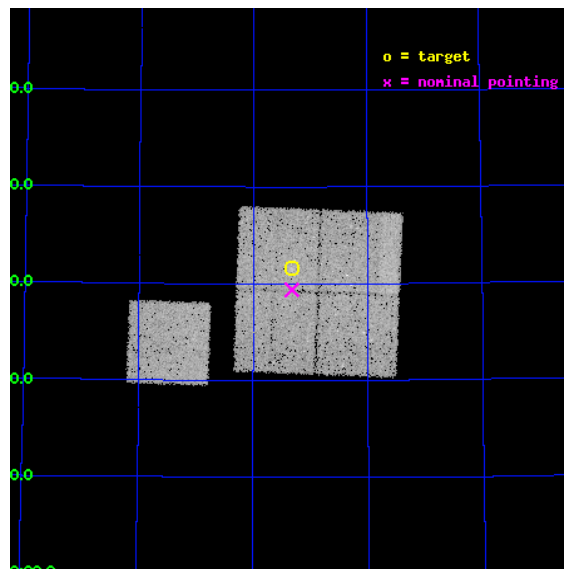
L2 Processing Date : Jun 13 2012

## Contents

<b>1</b>	<b>Front</b>	<b>2</b>
<b>2</b>	<b>OBI</b>	<b>3</b>
2.1	OBI . . . . .	3
2.1.1	Images . . . . .	3
2.1.2	Bias . . . . .	3
2.1.3	Parameters . . . . .	4
2.1.4	Events . . . . .	4
2.2	Compared Parameters . . . . .	5
2.3	Aspect . . . . .	6
2.4	Star Slots . . . . .	9
2.4.1	Slot 3 . . . . .	9
2.4.2	Slot 4 . . . . .	10
2.4.3	Slot 5 . . . . .	11
2.4.4	Slot 6 . . . . .	12
2.4.5	Slot 7 . . . . .	13
2.5	FID Slots . . . . .	14
2.5.1	Slot 0 . . . . .	14
2.5.2	Slot 1 . . . . .	15
2.5.3	Slot 2 . . . . .	16
<b>A</b>	<b>Summary</b>	<b>17</b>
A.1	Status . . . . .	17
A.2	Comments . . . . .	17

# 1 Front

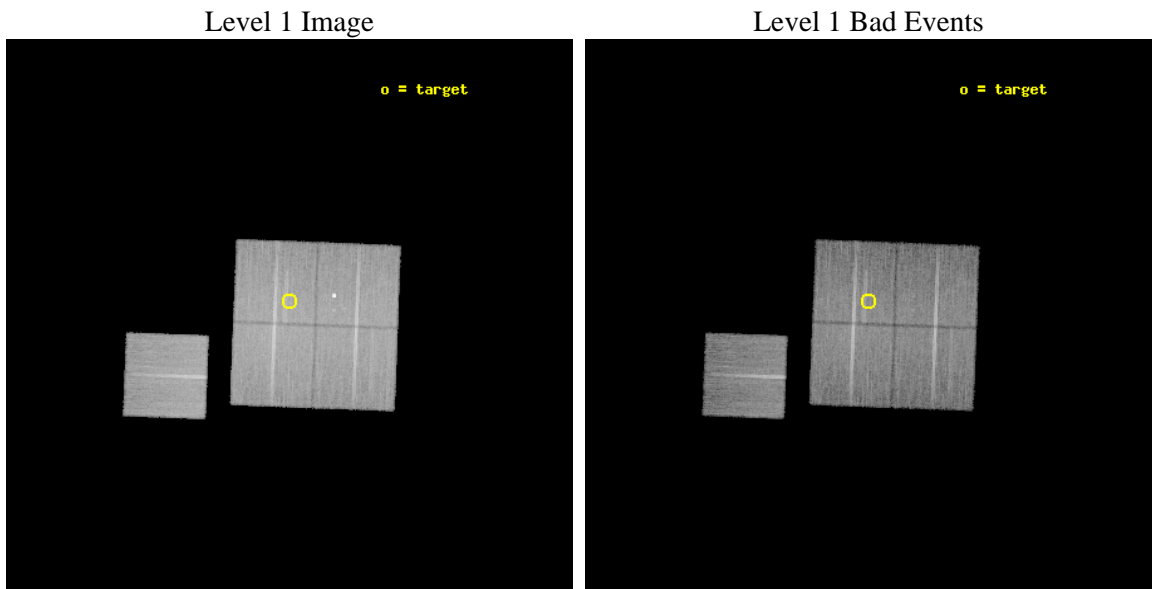
seq_num	800804	Sequence number
obs_id	10443	Observation id
title	Local versus Large Scale : The Active Galaxy Population in High-Redshift Clusters	Proposal title
observer	Prof Lori Lubin	Principal investigator
object	RX J1757.3+6631	Source name
dtcycle	0	&#160
cycle	P	events from which exps? Prim/Second/Both
ra_targ	269.3325	Observer's specified target RA [deg]
dec_targ	66.5275	Observer's specified target Dec [deg]
ra_nom	269.33149651095	Nominal RA [deg]
dec_nom	66.489756666117	Nominal Dec [deg]
roll_nom	272.20962875456	Nominal Roll [deg]
revision	2	Processing version of data
ontime	22037.076722264	Sum of GTIs [s]
livetime	21749.146091428	Livetime [s]
ontime0	22040.094632387	Sum of GTIs [s]
ontime1	22036.994672239	Sum of GTIs [s]
ontime2	22040.176672459	Sum of GTIs [s]
ontime3	22037.076722264	Sum of GTIs [s]
ontime6	22043.194562733	Sum of GTIs [s]
l2events	82290	Number of level 2 events



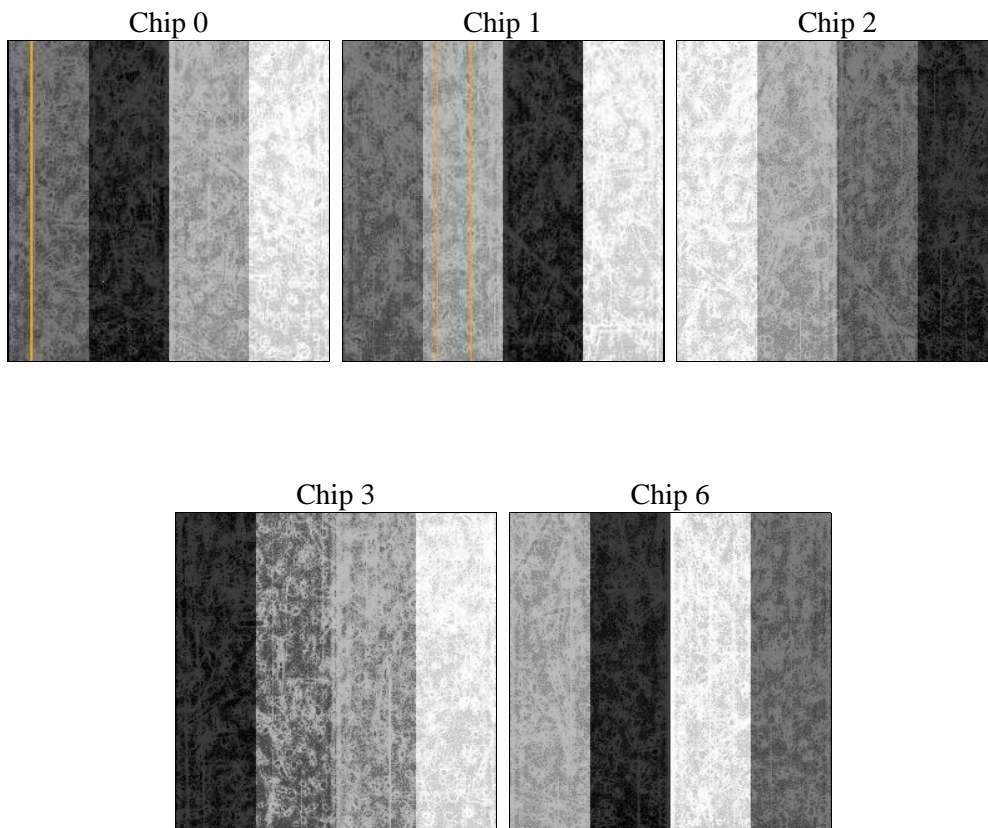
## 2 OBI

### 2.1 OBI

#### 2.1.1 Images



#### 2.1.2 Bias



### 2.1.3 Parameters

obi_num	1	Obi number	sched_exp_time	22000.000000	[s] Scheduled observation exposure time
ascdsver	8.4.5	Processing system revision	ontime	22037.076722264	Sum of GTIs [s]
caldbver	4.4.10	&#160	ontime0	22040.094632387	Sum of GTIs [s]
date	2012-06-13T19:52:26	Date and time of file creation	ontime1	22036.994672239	Sum of GTIs [s]
revision	2	Processing version of data	ontime2	22040.176672459	Sum of GTIs [s]
			ontime3	22037.076722264	Sum of GTIs [s]
			ontime6	22043.194562733	Sum of GTIs [s]
			l1events	931349	Number of level 1 events

### 2.1.4 Events

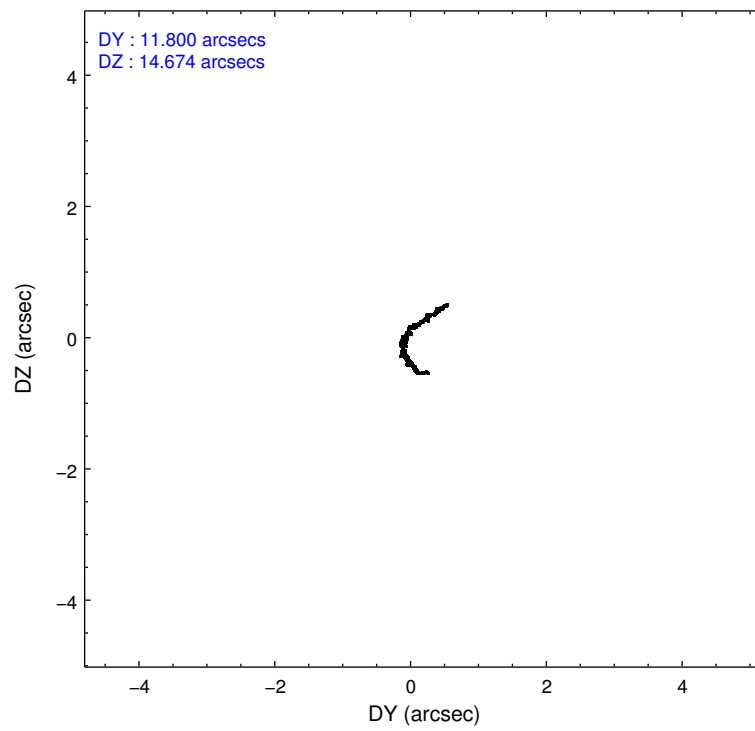
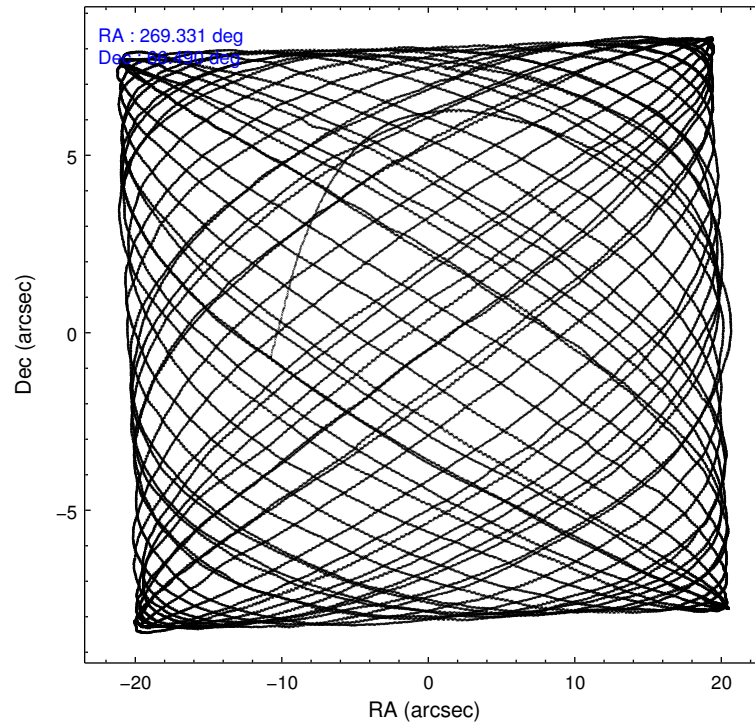
	ccd 0	ccd 1	ccd 2	ccd 3	ccd 6
level 1 events	179340	184619	196596	184652	186142
rejected events	159711	156528	177745	166344	166741
rejected %	89%	84%	90%	90%	89%

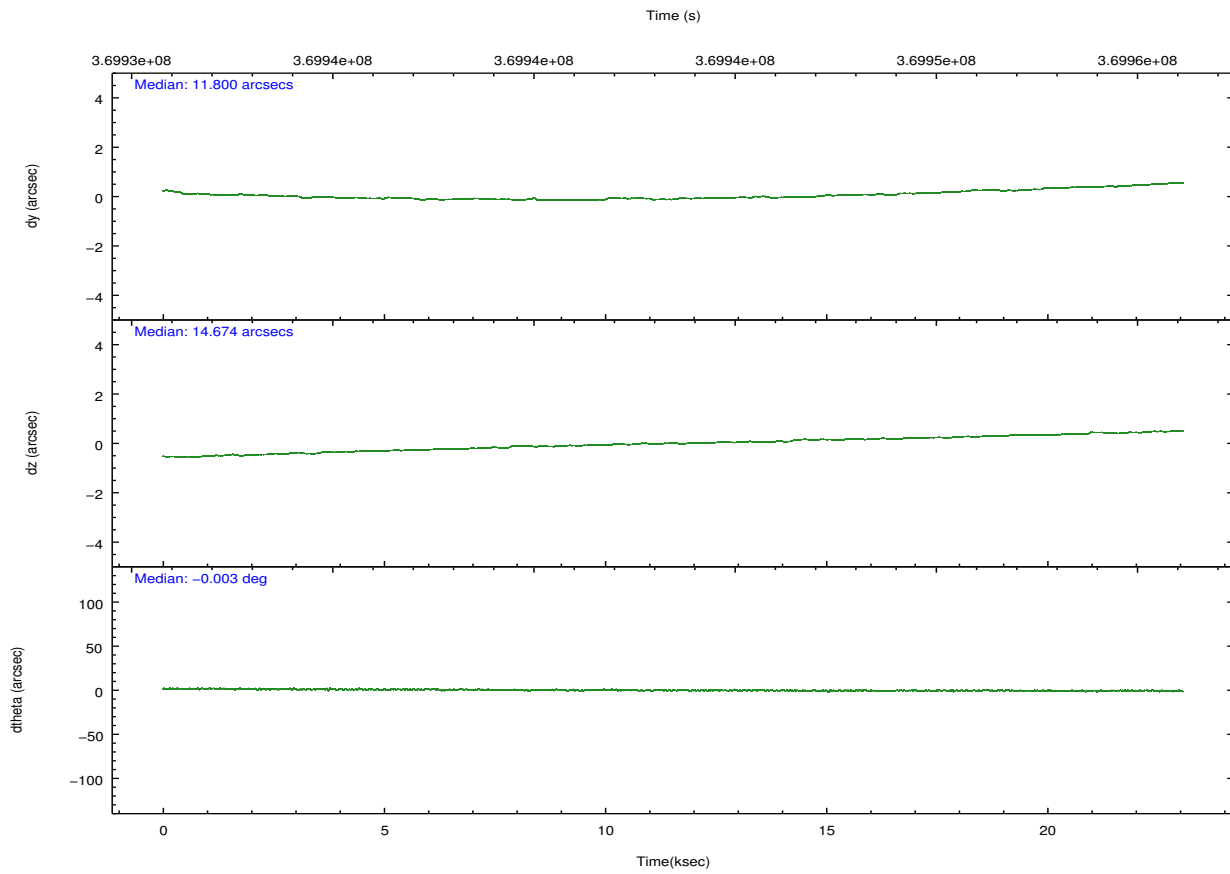
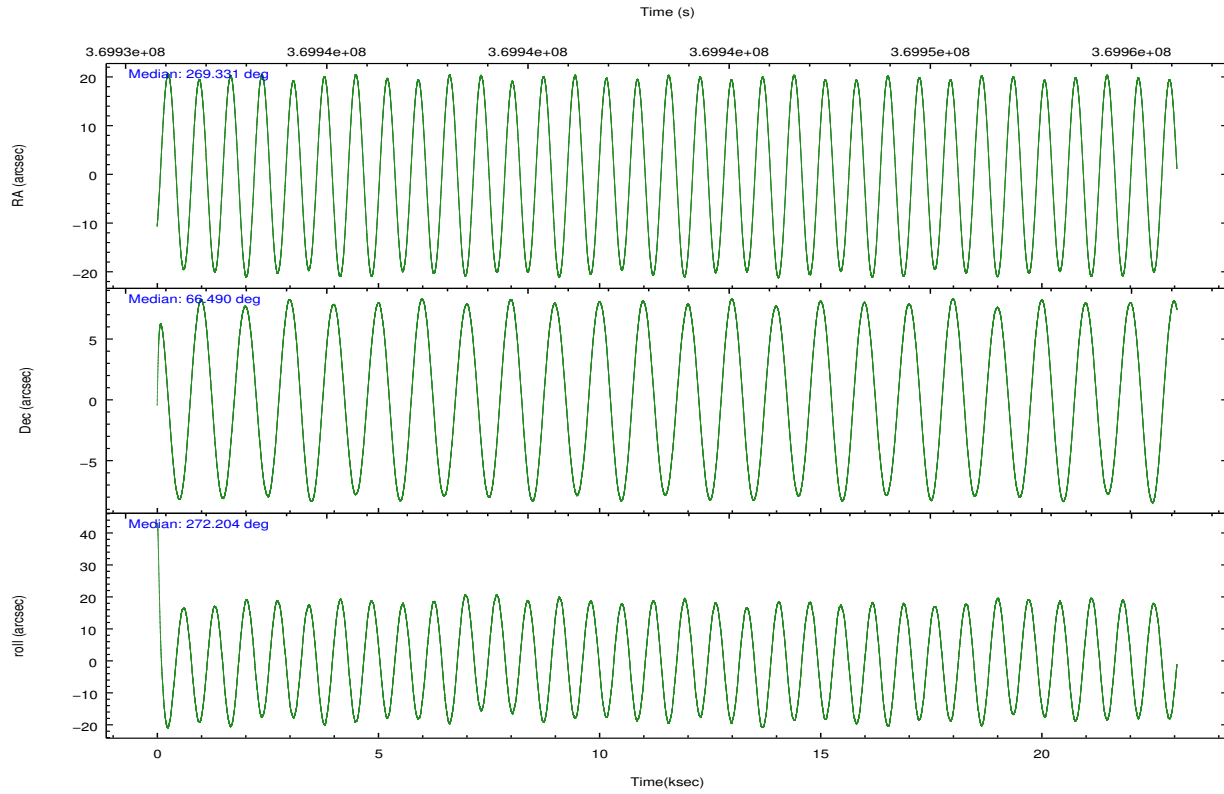
	ccd 0	ccd 1	ccd 2	ccd 3	ccd 6
grade 0 events	6884	13694	6699	6476	6628
	3%	7%	3%	3%	3%
grade 1 events	111	186	80	134	97
	0%	0%	0%	0%	0%
grade 2 events	4750	5305	4589	4154	4326
	2%	2%	2%	2%	2%
grade 3 events	2246	2311	2005	2019	2132
	1%	1%	1%	1%	1%
grade 4 events	2005	2288	1962	2013	2049
	1%	1%	0%	1%	1%
grade 5 events	7053	7784	6523	8004	7712
	3%	4%	3%	4%	4%
grade 6 events	3747	4497	3599	3649	4271
	2%	2%	1%	1%	2%
grade 7 events	152544	148554	171139	158203	158927
	85%	80%	87%	85%	85%

## 2.2 Compared Parameters

Parameter	Planned	Actual	Parameter	Planned	Actual
Instrument	ACIS	ACIS	Obspar format version number	7	7
Detector	ACIS-01236	ACIS-01236	Obspar file type	PREDICTED	ACTUAL
Grating	NONE	NONE	Obspar update status	NONE	UPDATED
Data mode	VFAINT	VFAINT	CCD I0 on	Y	Y
Observation mode	POINTING	POINTING	CCD I1 on	Y	Y
[deg] Pointing RA	269.294433	269.3314965109506	CCD I2 on	Y	Y
[deg] Pointing Dec	66.512961	66.4897566661174	CCD I3 on	Y	Y
[deg] Pointing Roll	272.034909	272.2096287545595	CCD S0 on	N	N
[mm] SIM focus pos	-0.782348	-0.7809083437167272	CCD S1 on	N	N
[mm] SIM defocus	0	0.001439871863259334	CCD S2 on	O1	Y
[mm] SIM translation stage pos	-227.592463	-227.5933067819097	CCD S3 on	N	N
[mm] SIM translation stage offset	-6	-5.999146221020027	CCD S4 on	N	N
[s] Observation start time (MET)	369932989.184000	369931050.60768	CCD S5 on	N	N
Observation start date	2009-09-21T15:08:43	2009-09-21T14:37:30	Number of optional ACIS chips dropped	0	0
[s] Observation end time (MET)	369954989.184000	369955636.77141	On-chip summing requested	N	N
Observation end date	2009-09-21T21:15:23	2009-09-21T21:27:16	Subarray requested	NONE	NONE
Read mode	TIMED	TIMED	Alternating exposures requested	N	N
			[s] Primary exposure time	0.000000	3.1

## 2.3 Aspect



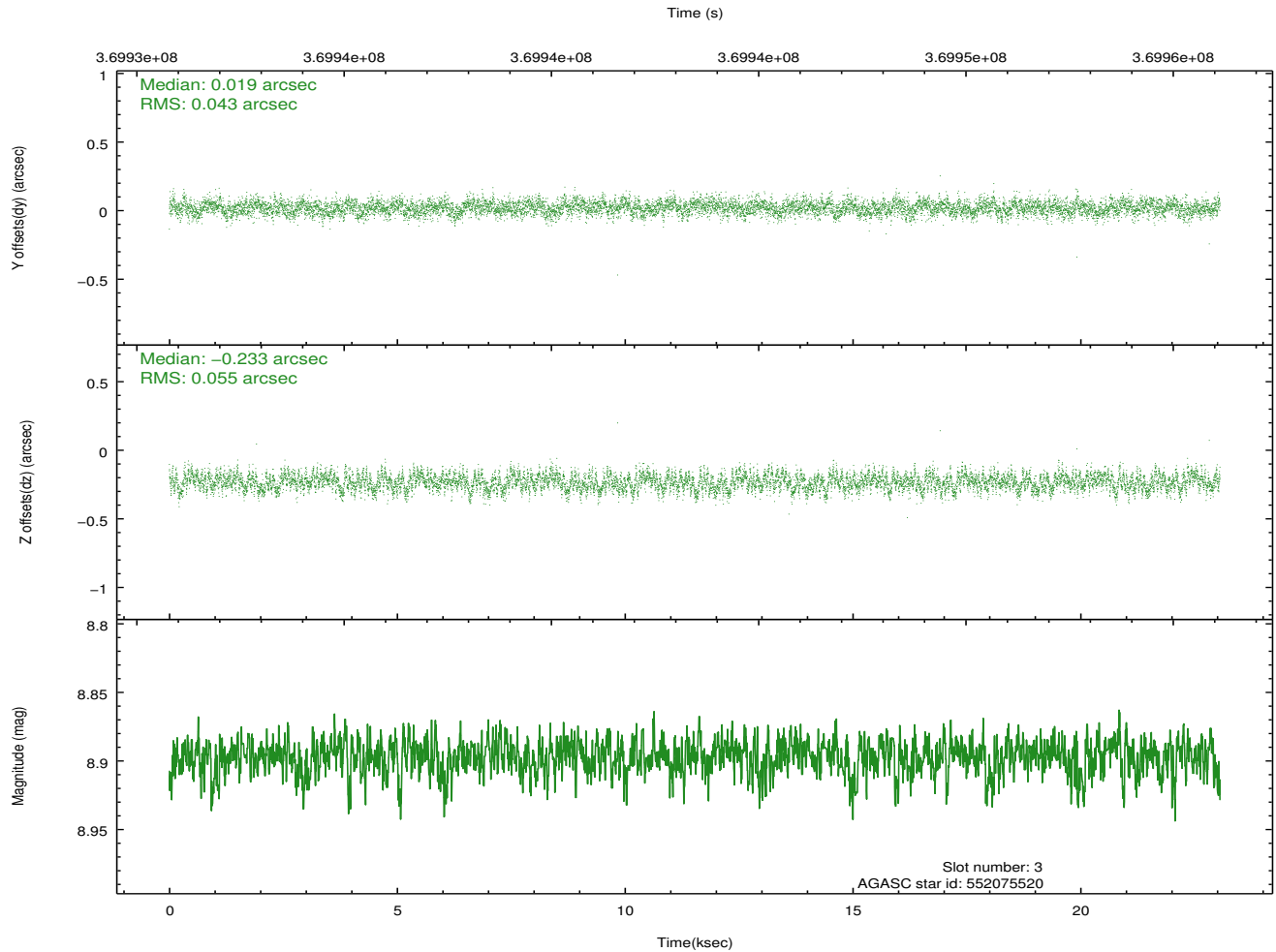
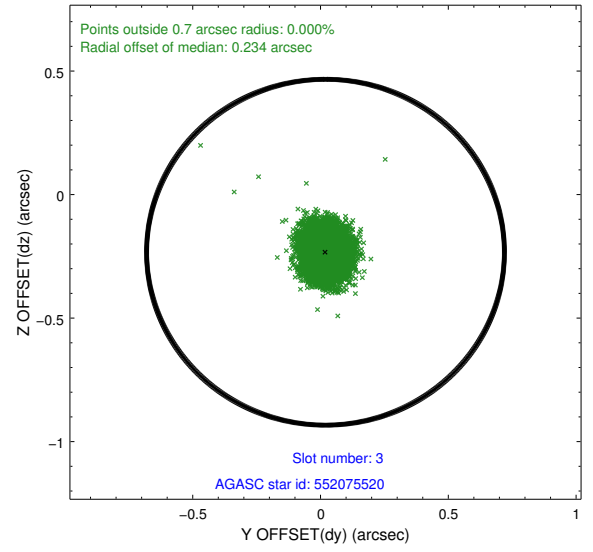
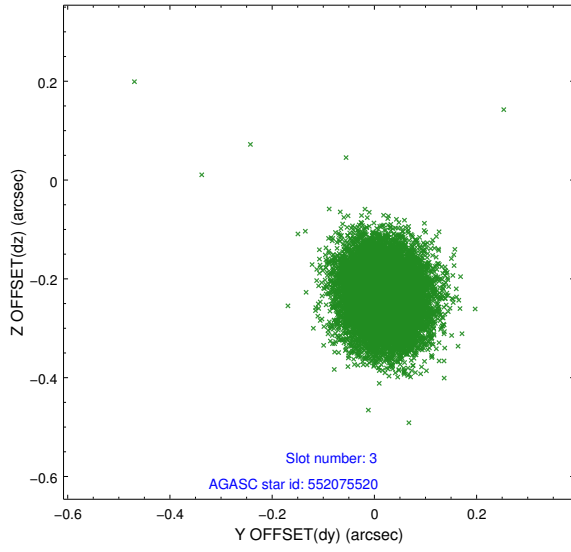


### Slot Statistics

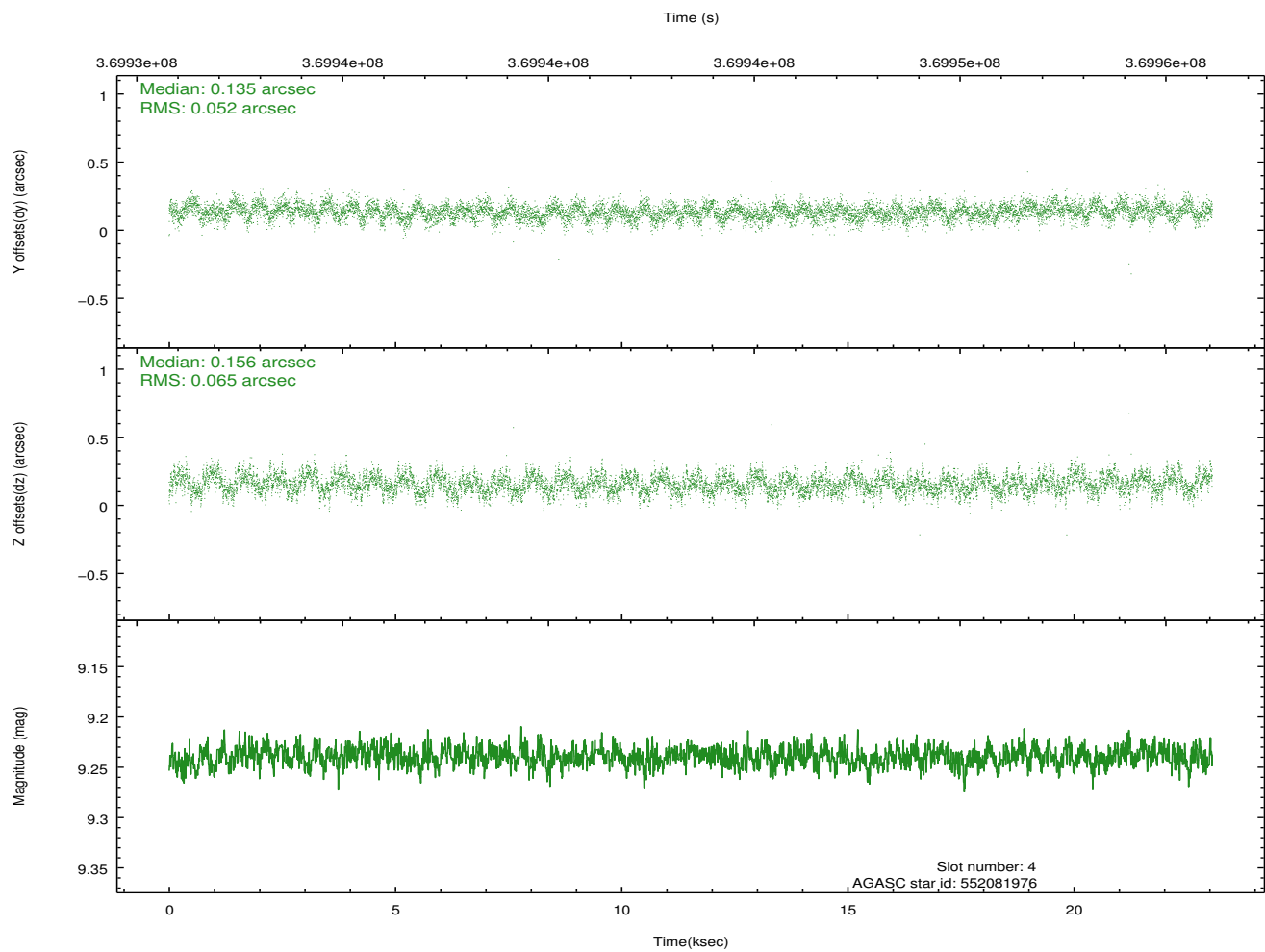
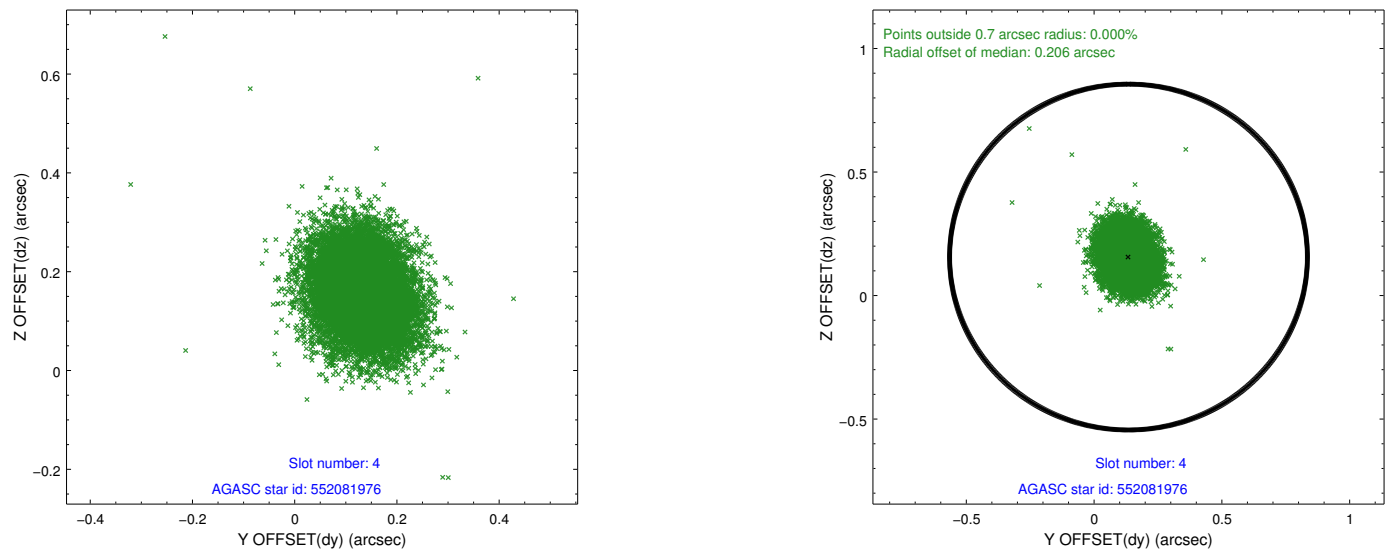
slot	status	id	mag	n_pts	med_dy	med_dz	dr1	dr2	ra	dec	mean_y	mean_z
0	FID	ACIS-I-1	6.99	5624	0.089	-0.039	0.011	0.033	0.000000	0.000000	927.67	-961.40
1	FID	ACIS-I-5	6.98	5624	-0.223	0.089	0.012	0.026	0.000000	0.000000	-1820.70	936.06
2	FID	ACIS-I-6	6.99	5624	0.046	0.019	0.010	0.018	0.000000	0.000000	392.97	1580.71
3	GUIDE	552075520	8.90	11241	0.019	-0.233	0.075	0.119	269.430358	66.310622	735.17	170.63
4	GUIDE	552081976	9.24	11237	0.135	0.156	0.089	0.143	269.000724	66.928627	-1510.58	-360.79
5	GUIDE	552084280	7.65	11247	-0.031	0.077	0.061	0.098	268.233478	66.419076	270.88	-1538.27
6	GUIDE	552206400	8.62	11244	-0.057	0.116	0.077	0.121	270.193803	65.897301	2252.64	1243.33
7	GUIDE	552213664	8.82	11243	-0.066	-0.119	0.086	0.140	270.812461	66.341359	668.92	2170.57

## 2.4 Star Slots

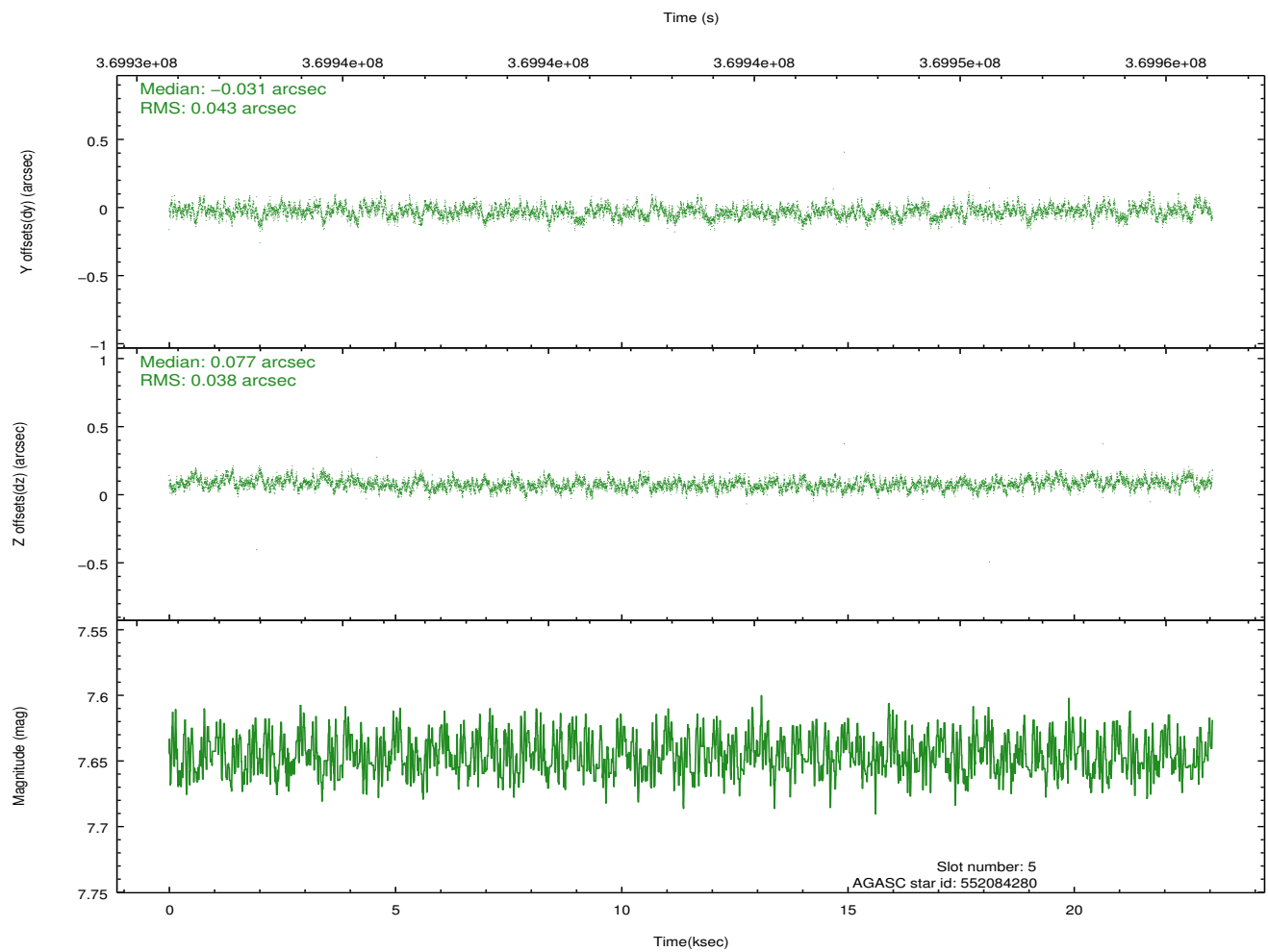
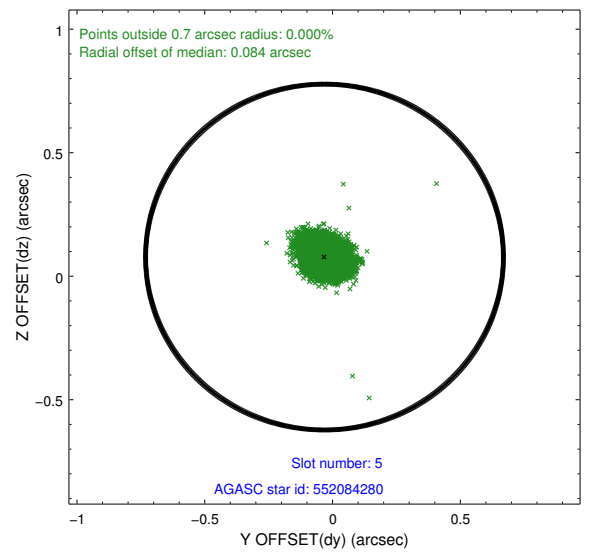
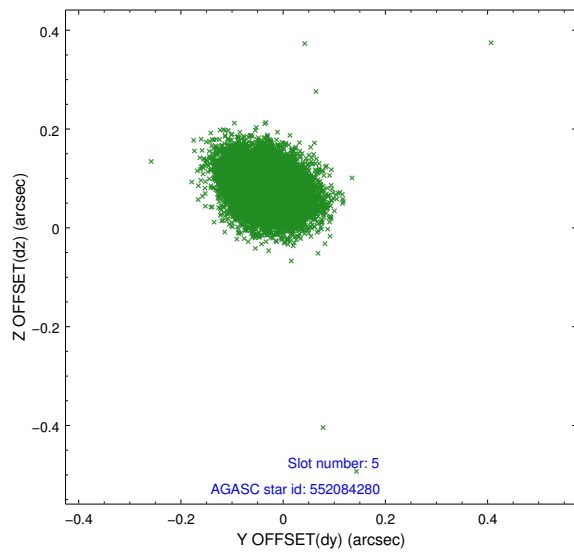
### 2.4.1 Slot 3



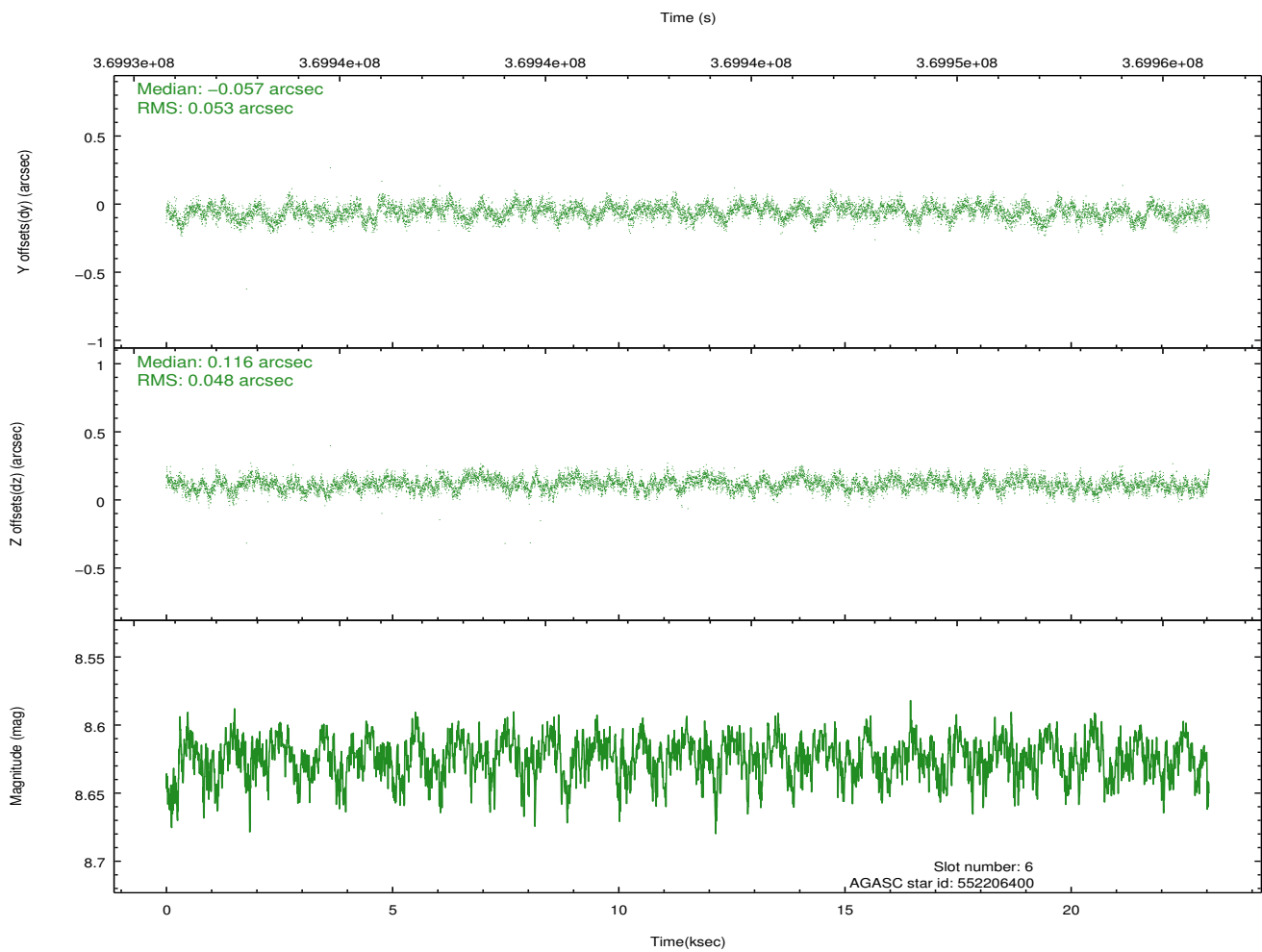
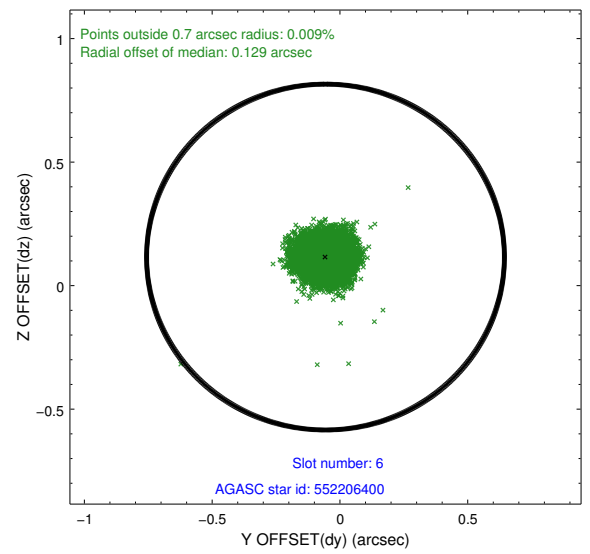
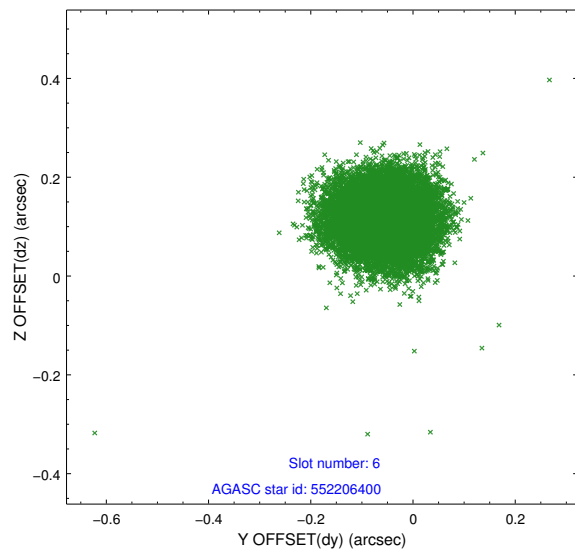
## 2.4.2 Slot 4



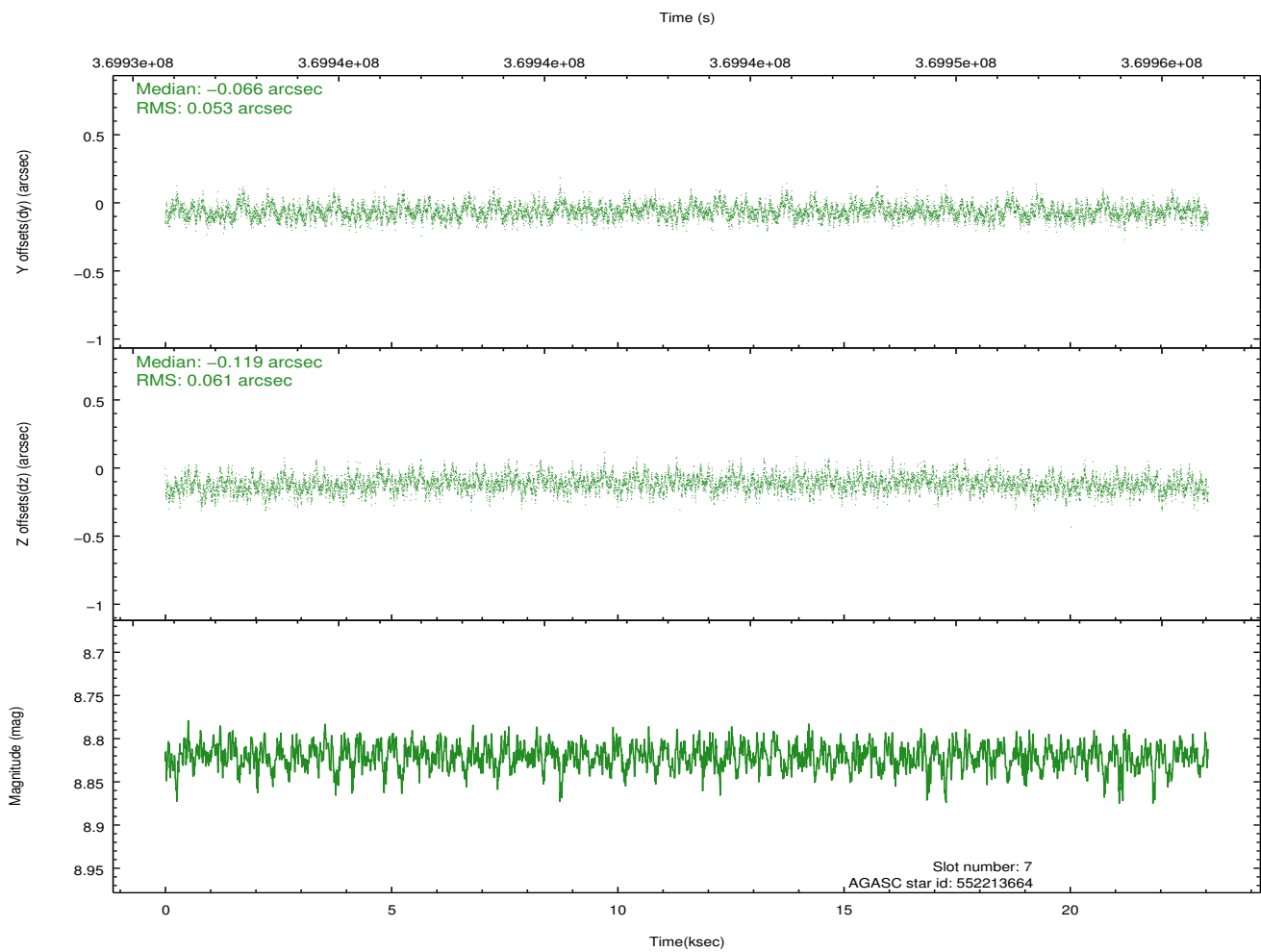
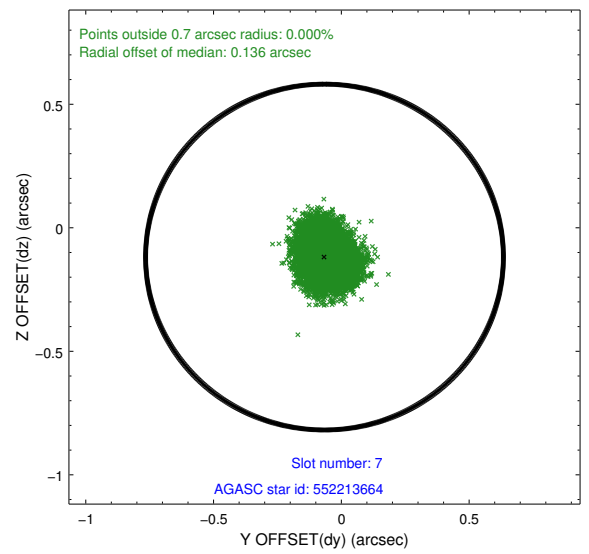
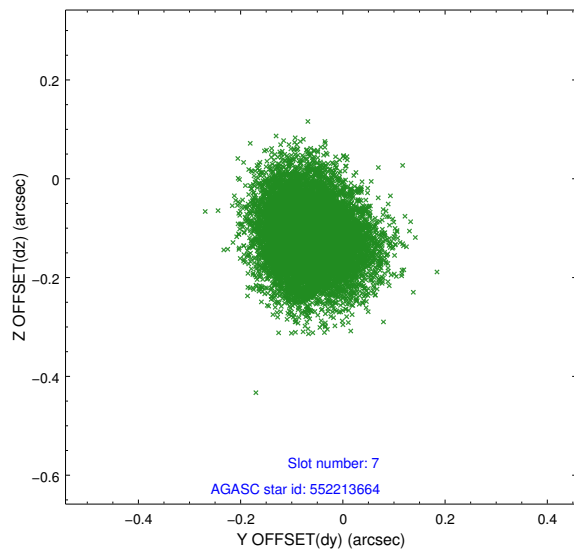
### 2.4.3 Slot 5



## 2.4.4 Slot 6

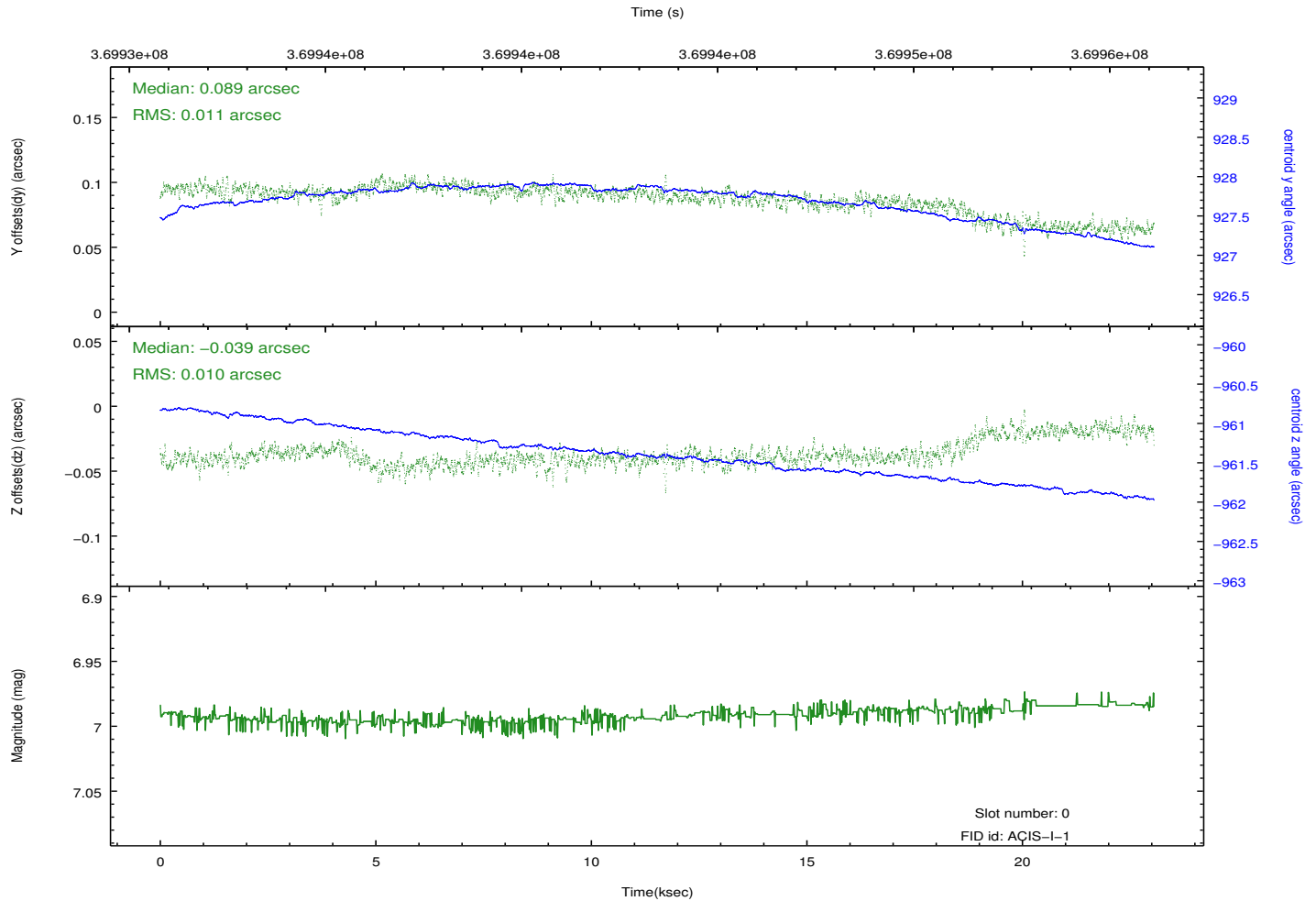
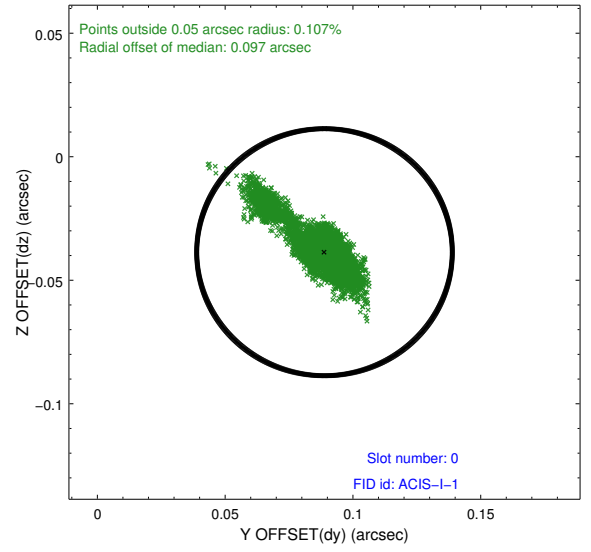
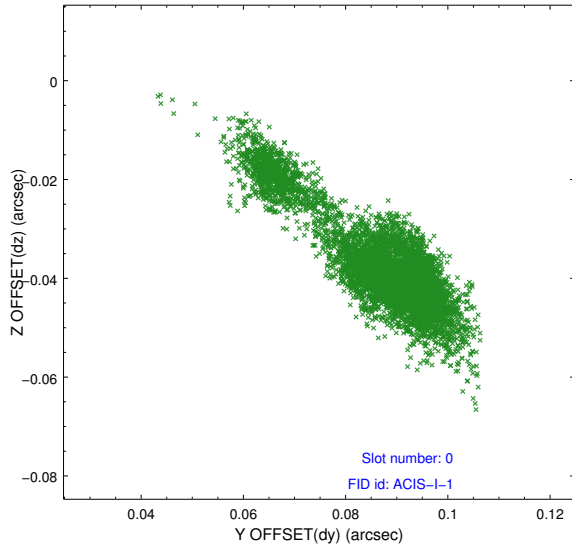


## 2.4.5 Slot 7

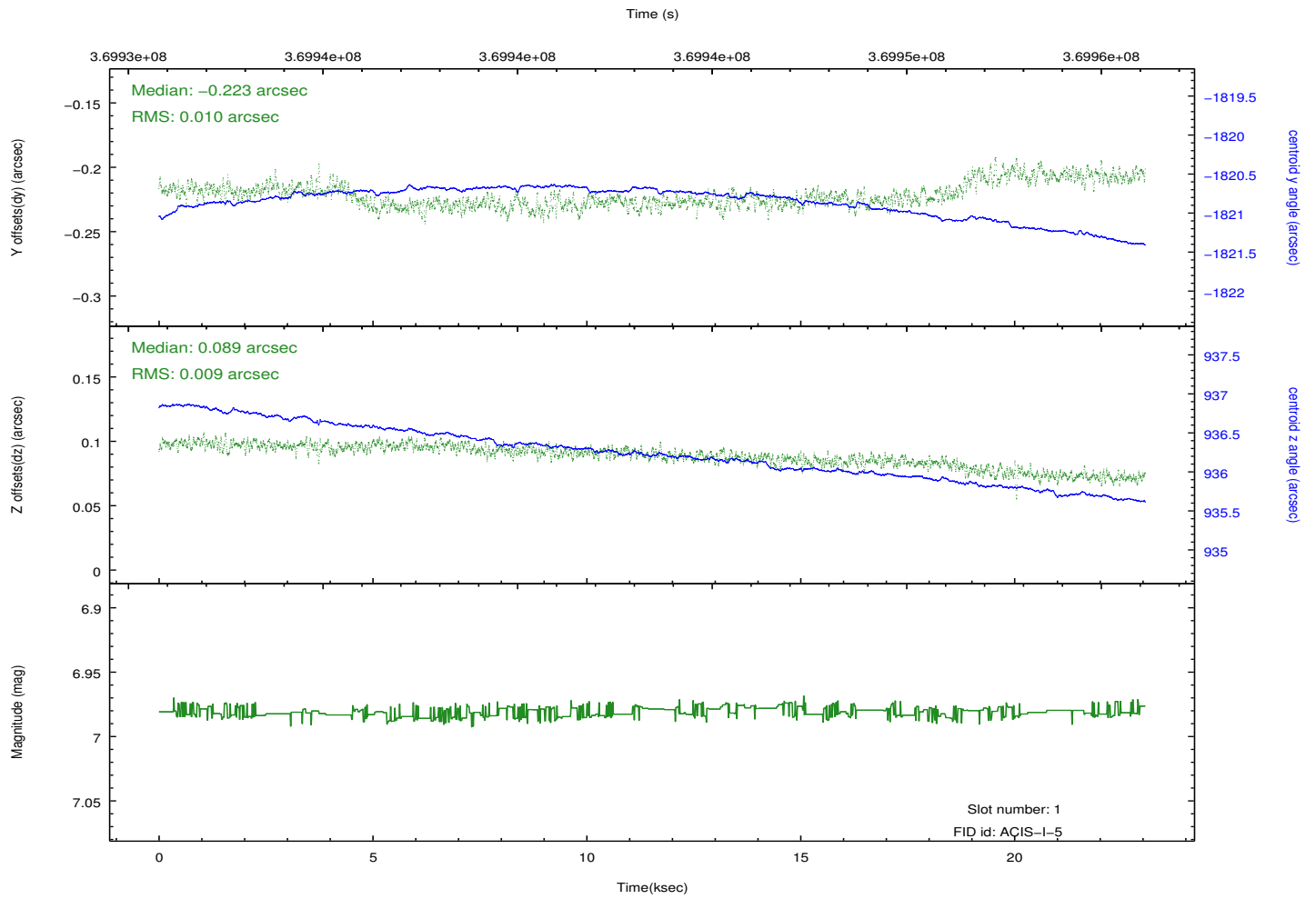
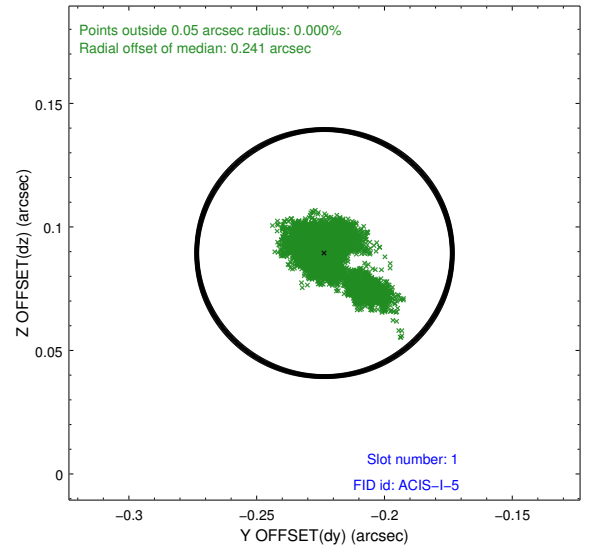
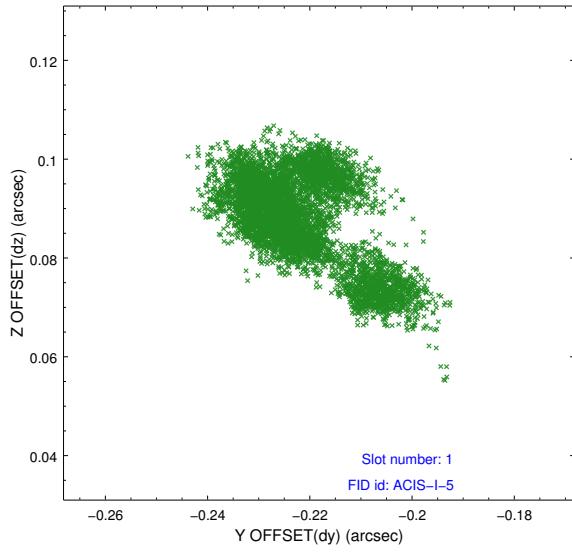


## 2.5 FID Slots

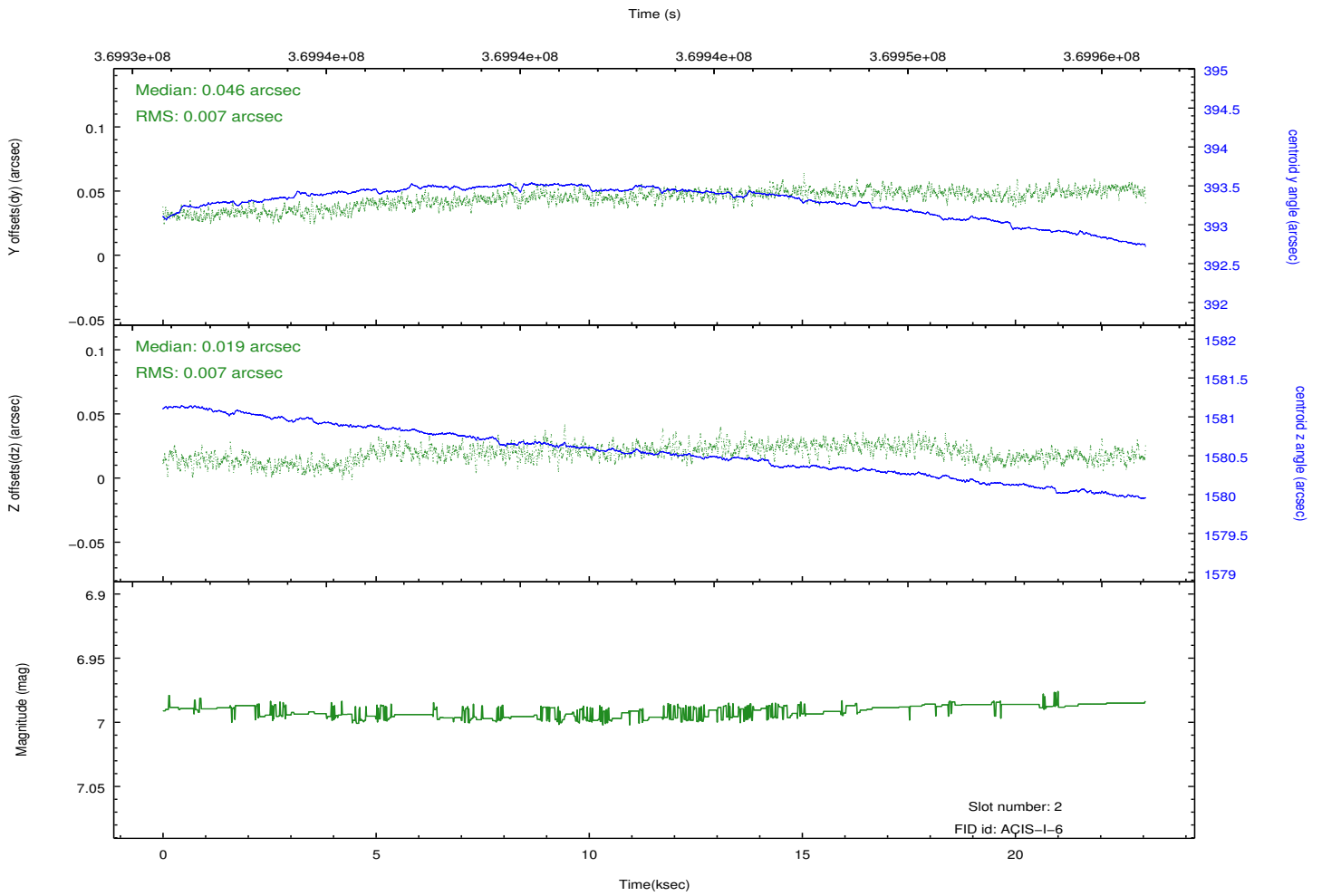
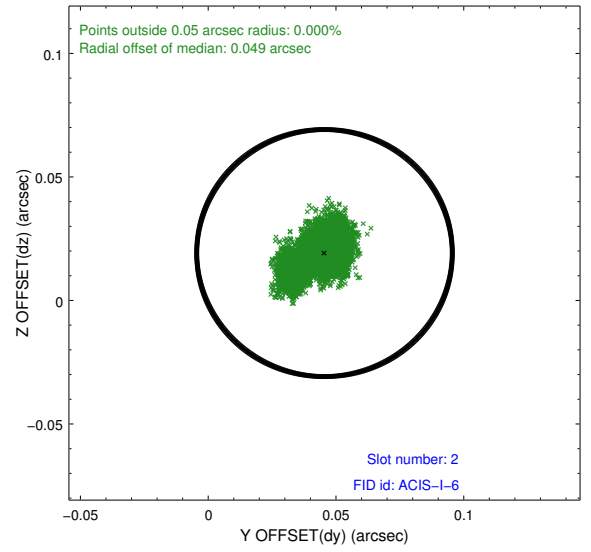
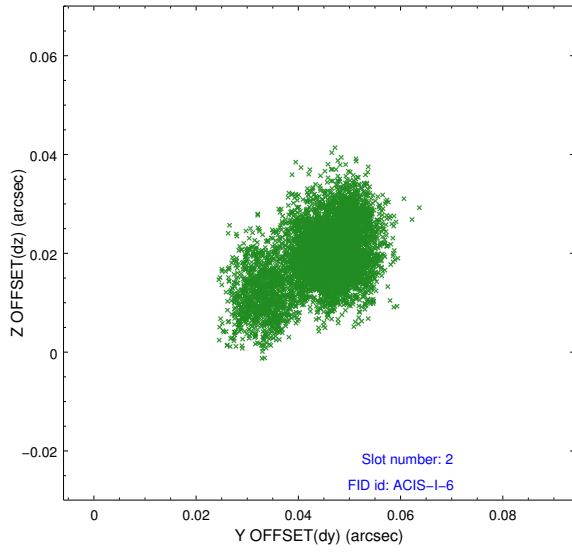
### 2.5.1 Slot 0



## 2.5.2 Slot 1



### 2.5.3 Slot 2



# A Summary

## A.1 Status

V&V Scientist	Jen Lauer
V&V Date (YYYY-MM-DD)	2012.06.18
V&V Edition	1
V&V Disposition and Status	OK
V&V Charge Time	22.034376739442

## A.2 Comments

Joint proposal: NRAO