

V&V Reference Report

L2 ASCDS Version : 8.4.5

Observation 10453 - L2 Version 2
Chandra X-Ray Center

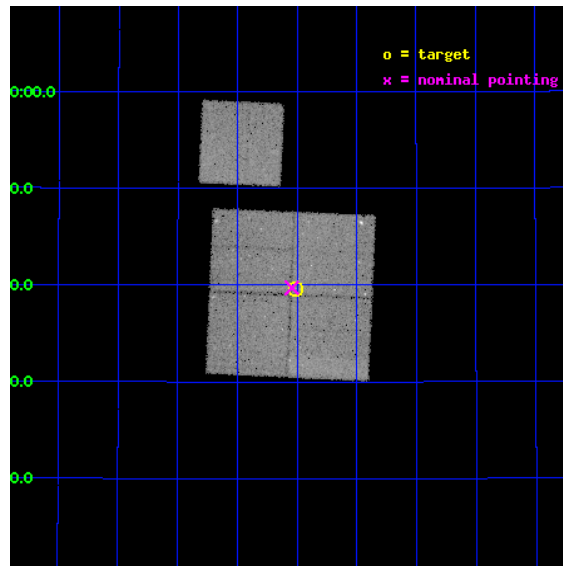
L2 Processing Date : Jun 16 2012

Contents

1	Front	2
2	OBI	3
2.1	OBI	3
2.1.1	Images	3
2.1.2	Bias	3
2.1.3	Parameters	4
2.1.4	Events	4
2.2	Compared Parameters	5
2.3	Aspect	6
2.4	Star Slots	9
2.4.1	Slot 3	9
2.4.2	Slot 4	10
2.4.3	Slot 5	11
2.4.4	Slot 6	12
2.4.5	Slot 7	13
2.5	FID Slots	14
2.5.1	Slot 0	14
2.5.2	Slot 1	15
2.5.3	Slot 2	16
A	Summary	17
A.1	Status	17
A.2	Comments	17

1 Front

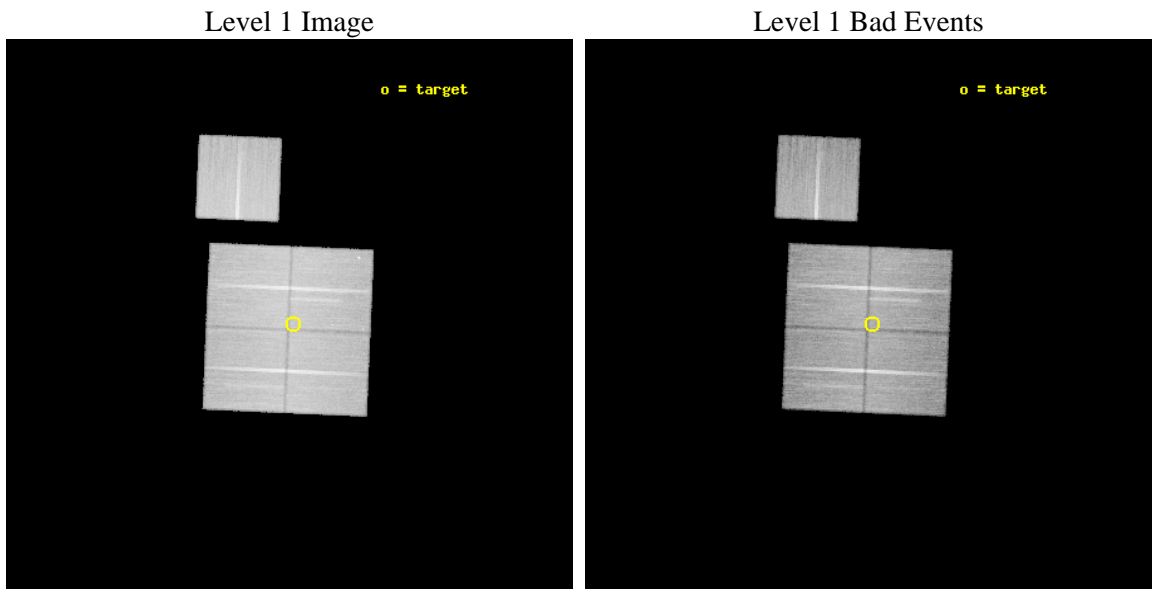
seq_num	800814	Sequence number
obs_id	10453	Observation id
title	The Role of AGN in Massive Galaxy Formation	Proposal title
observer	Dr. Spencer Stanford	Principal investigator
object	ISCS1014	Source name
dtcycle	0	
cycle	P	events from which exps? Prim/Second/Both
ra_targ	216.626667	Observer's specified target RA [deg]
dec_targ	33.659222	Observer's specified target Dec [deg]
ra_nom	216.63581600198	Nominal RA [deg]
dec_nom	33.661939844135	Nominal Dec [deg]
roll_nom	2.4705168863919	Nominal Roll [deg]
revision	2	Processing version of data
ontime	35129.118319631	Sum of GTIs [s]
liveltime	34670.130527104	Livetime [s]
ontime0	35125.977458954	Sum of GTIs [s]
ontime1	35125.977458954	Sum of GTIs [s]
ontime2	35122.836408973	Sum of GTIs [s]
ontime3	35129.118319631	Sum of GTIs [s]
ontime6	35132.259309828	Sum of GTIs [s]
l2events	134746	Number of level 2 events



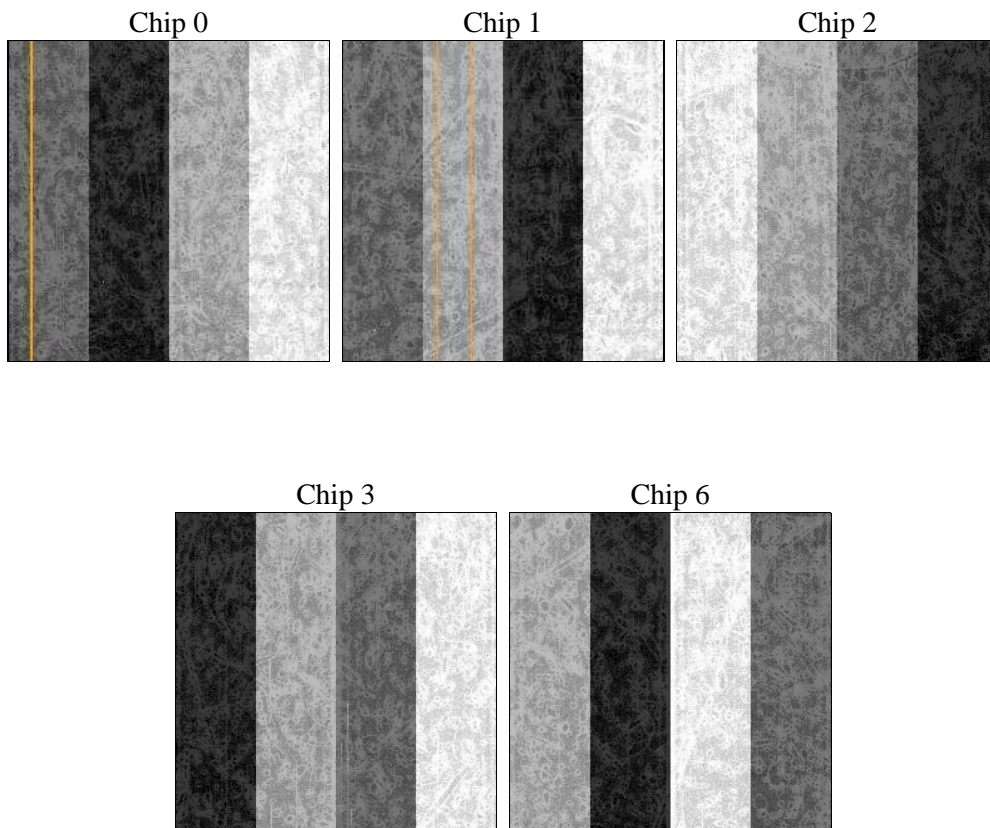
2 OBI

2.1 OBI

2.1.1 Images



2.1.2 Bias



2.1.3 Parameters

obi_num	0	Obi number	sched_exp_time	35000.000000	[s] Scheduled observation exposure time
ascdsver	8.4.5	Processing system revision	ontime	35129.118319631	Sum of GTIs [s]
caldbver	4.4.10	 	ontime0	35125.977458954	Sum of GTIs [s]
date	2012-06-16T02:37:16	Date and time of file creation	ontime1	35125.977458954	Sum of GTIs [s]
revision	2	Processing version of data	ontime2	35122.836408973	Sum of GTIs [s]
			ontime3	35129.118319631	Sum of GTIs [s]
			ontime6	35132.259309828	Sum of GTIs [s]
			l1events	1515775	Number of level 1 events

2.1.4 Events

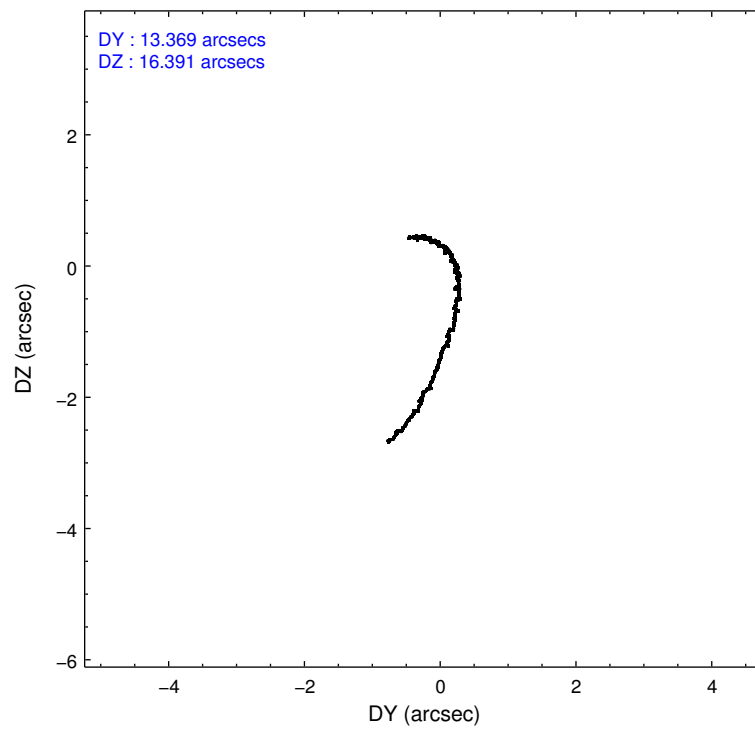
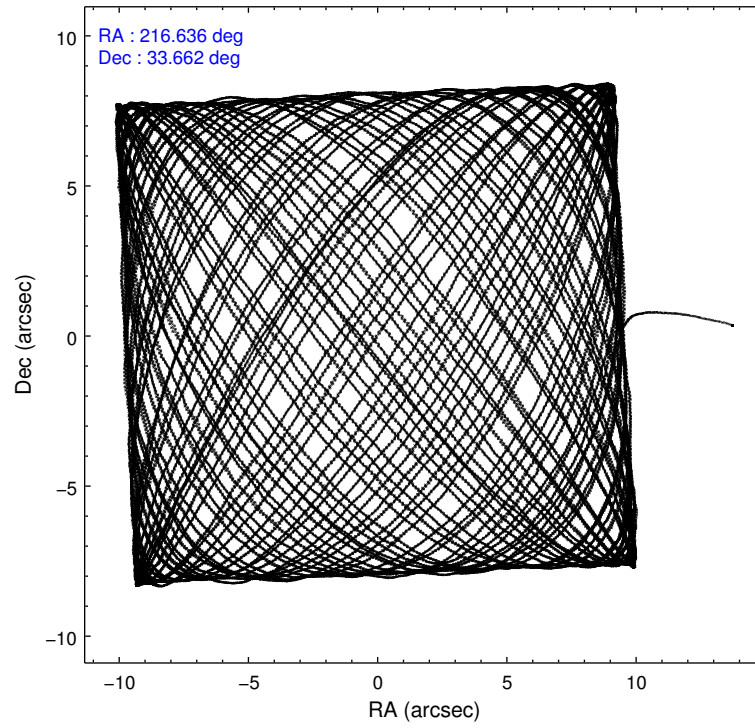
	ccd 0	ccd 1	ccd 2	ccd 3	ccd 6
level 1 events	288578	286727	318330	309378	312762
rejected events	256563	251551	286804	278113	280834
rejected %	88%	87%	90%	89%	89%

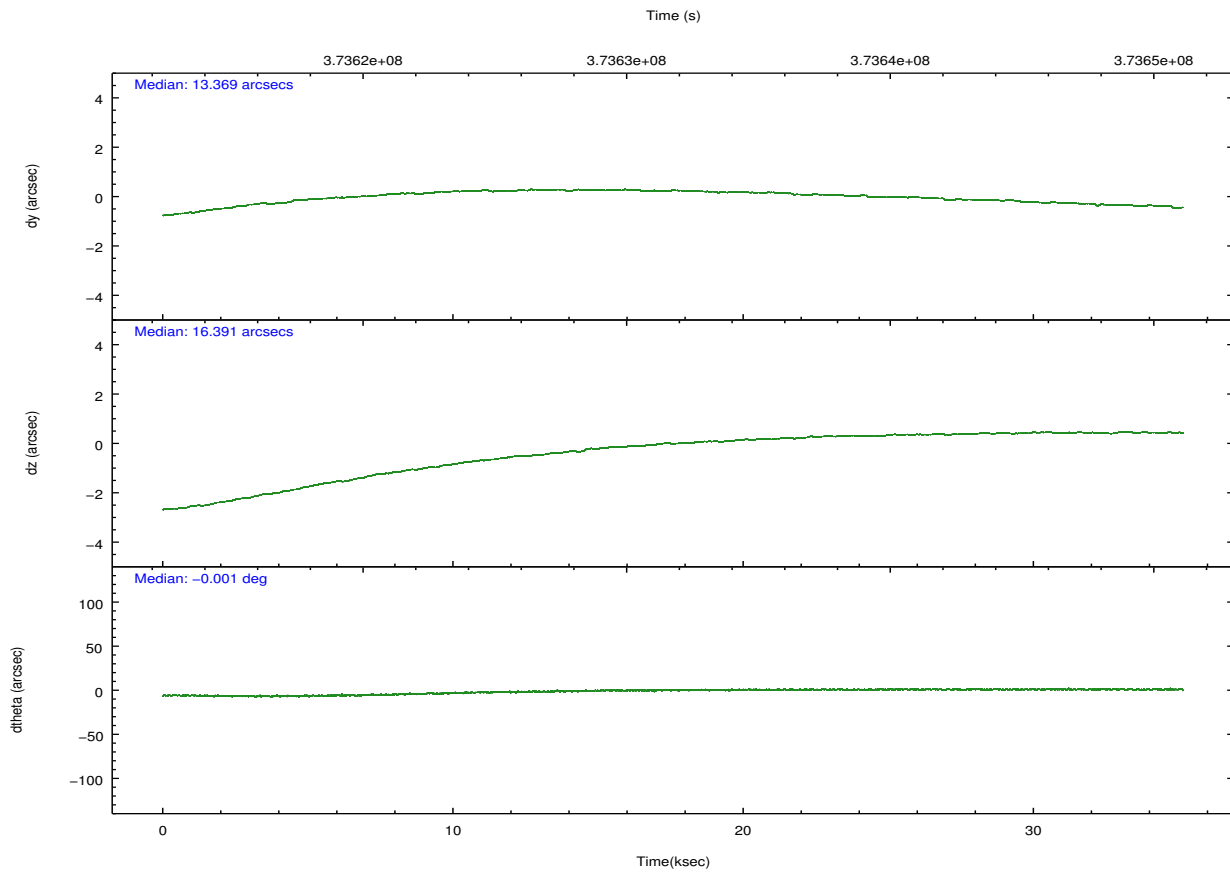
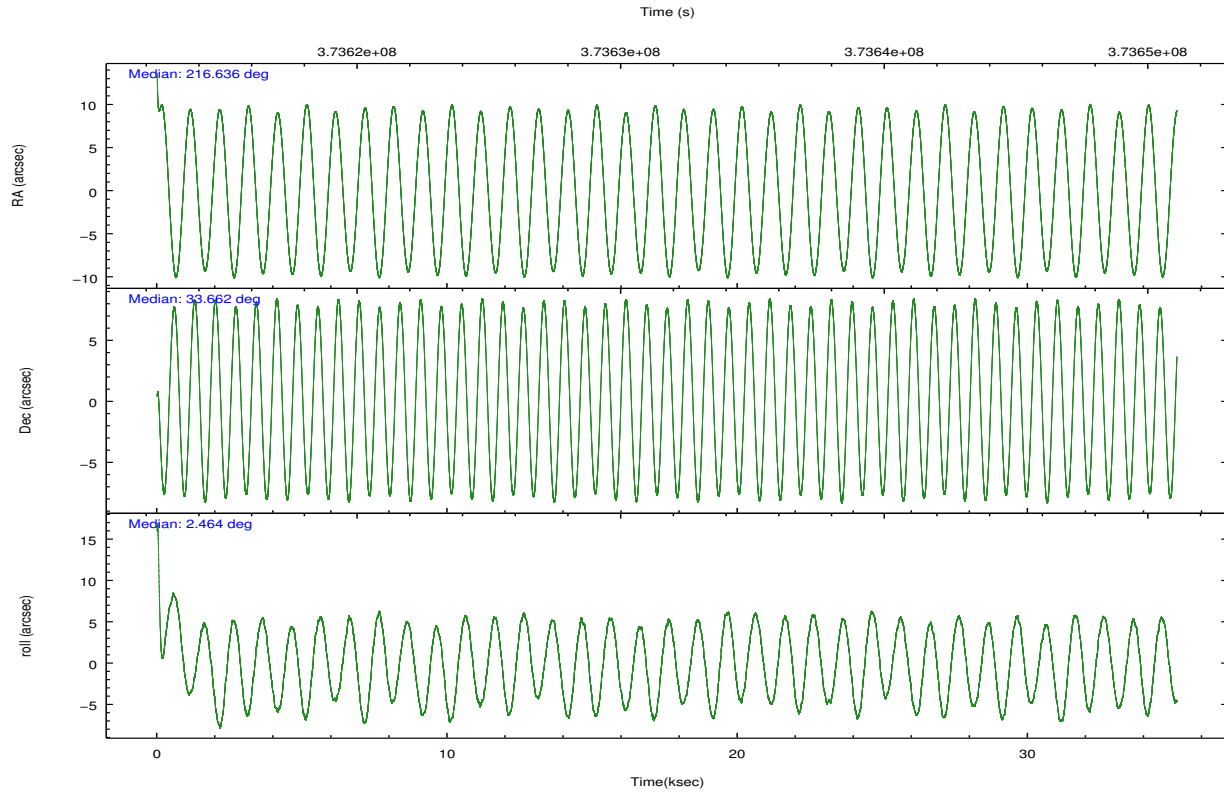
	ccd 0	ccd 1	ccd 2	ccd 3	ccd 6
grade 0 events	11451	12724	11344	11796	11101
	3%	4%	3%	3%	3%
grade 1 events	200	160	195	214	142
	0%	0%	0%	0%	0%
grade 2 events	7855	8192	7806	6795	7171
	2%	2%	2%	2%	2%
grade 3 events	3501	3729	3256	3279	3451
	1%	1%	1%	1%	1%
grade 4 events	3360	3601	3321	3273	3410
	1%	1%	1%	1%	1%
grade 5 events	11160	12354	10856	12853	12268
	3%	4%	3%	4%	3%
grade 6 events	6122	7246	6026	6402	7062
	2%	2%	1%	2%	2%
grade 7 events	244929	238721	275526	264766	268157
	84%	83%	86%	85%	85%

2.2 Compared Parameters

Parameter	Planned	Actual	Parameter	Planned	Actual
Instrument	ACIS	ACIS	Obspar format version number	7	7
Detector	ACIS-01236	ACIS-01236	Obspar file type	PREDICTED	ACTUAL
Grating	NONE	NONE	Obspar update status	NONE	UPDATED
Data mode	VFAINT	VFAINT	CCD I0 on	Y	Y
Observation mode	POINTING	POINTING	CCD I1 on	Y	Y
[deg] Pointing RA	216.608006	216.6358160019762	CCD I2 on	Y	Y
[deg] Pointing Dec	33.647098	33.66193984413453	CCD I3 on	Y	Y
[deg] Pointing Roll	2.277243	2.470516886391861	CCD S0 on	N	N
[mm] SIM focus pos	-0.782348	-0.7809083437167272	CCD S1 on	N	N
[mm] SIM defocus	0	0.001439871863259334	CCD S2 on	O1	Y
[mm] SIM translation stage pos	-233.592463	-233.5874344608287	CCD S3 on	N	N
[mm] SIM translation stage offset	0	-0.005018542100998502	CCD S4 on	N	N
[s] Observation start time (MET)	373614329.184000	373613209.54295	CCD S5 on	N	N
Observation start date	2009-11-03T05:44:23	2009-11-03T05:26:49	Number of optional ACIS chips dropped	0	0
[s] Observation end time (MET)	373649329.184000	373650369.89482	On-chip summing requested	N	N
Observation end date	2009-11-03T15:27:43	2009-11-03T15:46:09	Subarray requested	NONE	NONE
Read mode	TIMED	TIMED	Alternating exposures requested	N	N
			[s] Primary exposure time	0.000000	3.1

2.3 Aspect



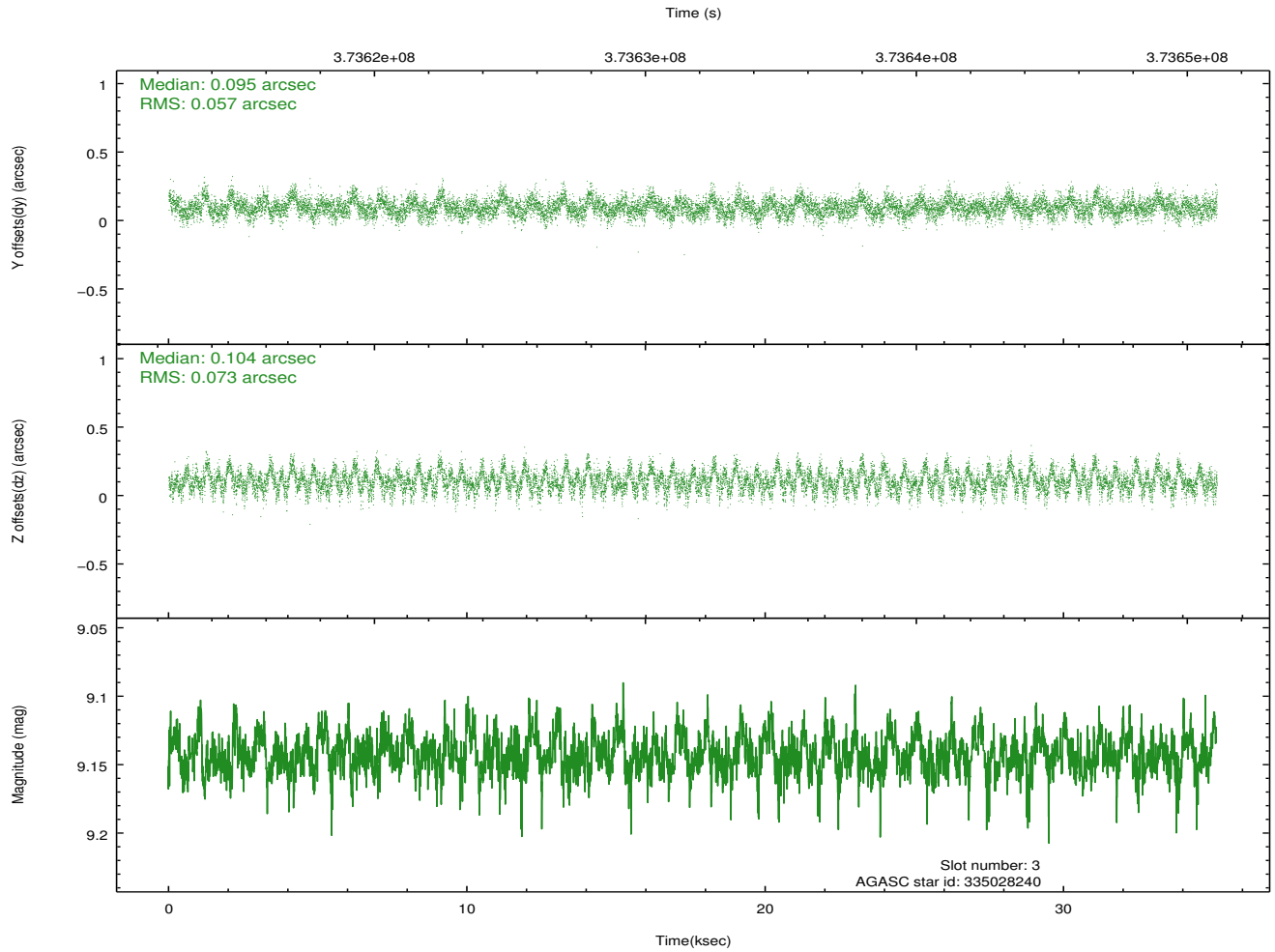
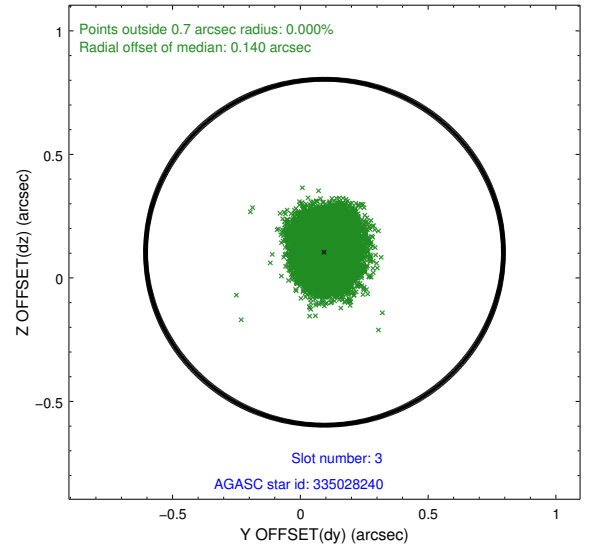
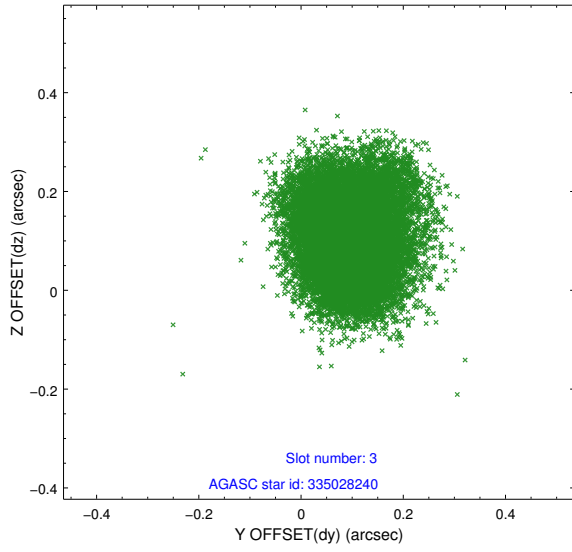


Slot Statistics

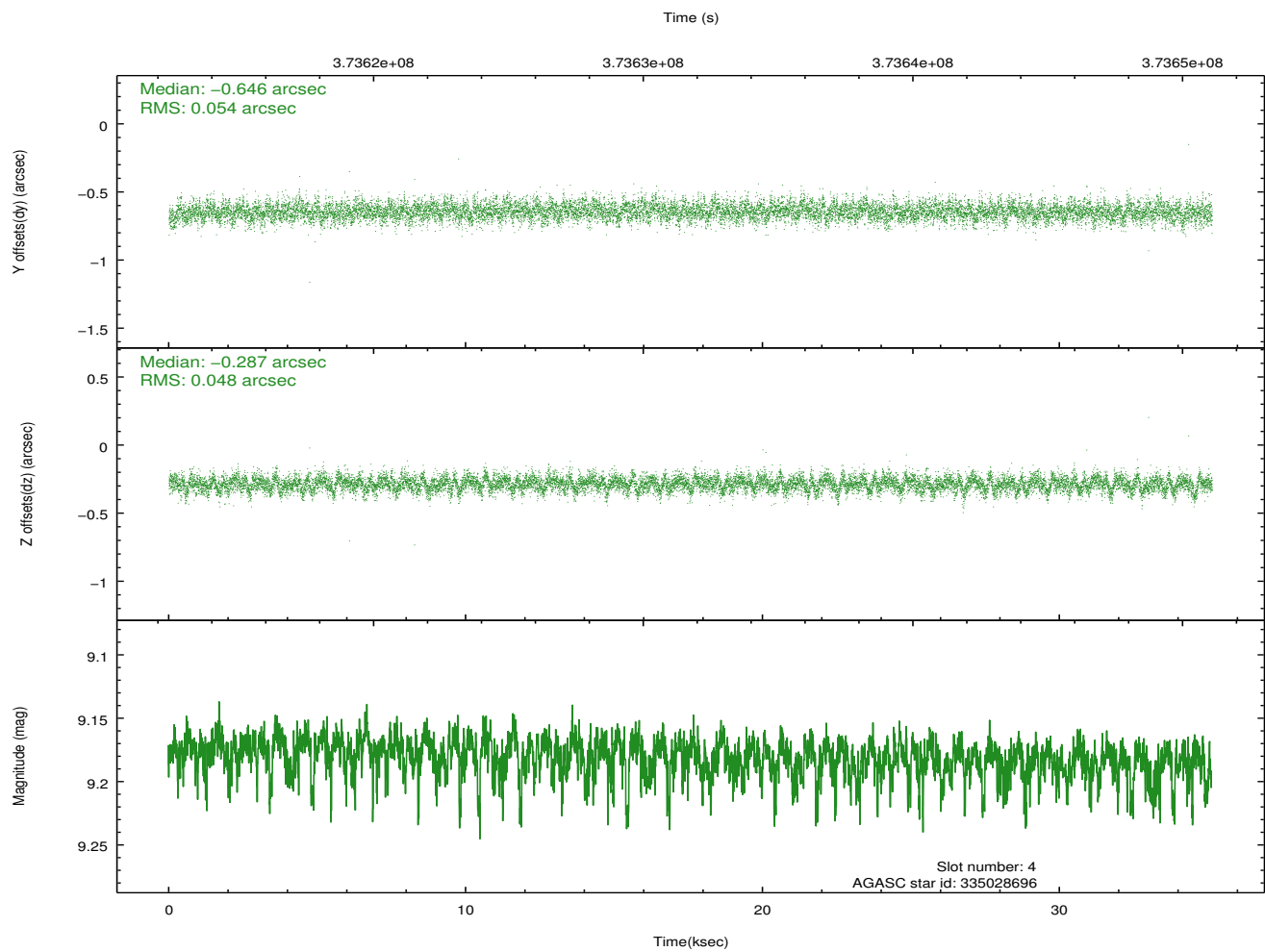
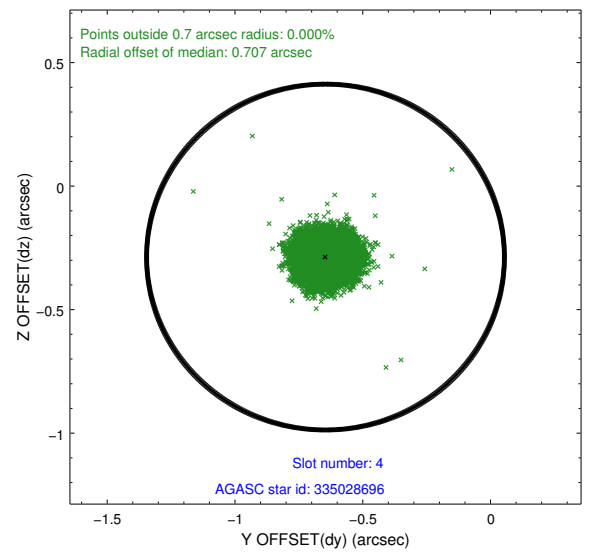
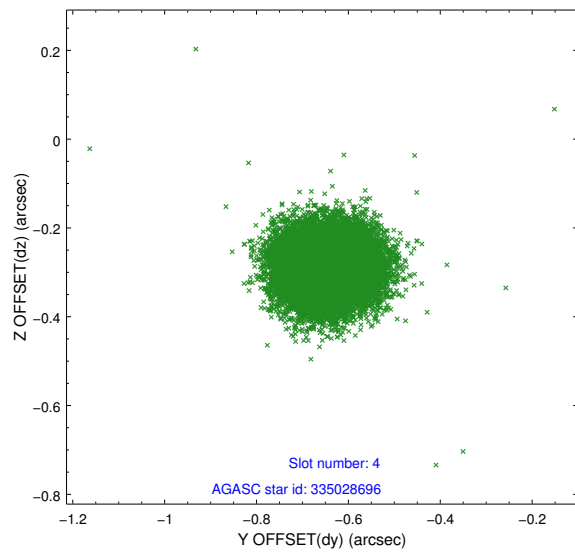
slot	status	id	mag	n_pts	med_dy	med_dz	dr1	dr2	ra	dec	mean_y	mean_z
0	FID	ACIS-I-1	7.00	8571	0.056	-0.029	0.018	0.080	0.000000	0.000000	926.22	-839.61
1	FID	ACIS-I-5	6.99	8571	-0.198	0.062	0.020	0.040	0.000000	0.000000	-1822.11	1057.94
2	FID	ACIS-I-6	6.99	8571	0.056	0.036	0.021	0.042	0.000000	0.000000	391.73	1702.46
3	GUIDE	335028240	9.14	17118	0.095	0.104	0.099	0.161	216.746851	33.385009	379.47	-958.32
4	GUIDE	335028696	9.18	17127	-0.646	-0.287	0.076	0.124	217.260519	33.844112	1977.48	637.49
5	GUIDE	335029808	9.06	17127	0.049	-0.106	0.095	0.155	216.789548	33.180488	480.34	-1699.36
6	GUIDE	335030152	9.71	17121	0.270	0.083	0.149	0.244	216.202154	33.091054	-1301.82	-1949.08
7	GUIDE	334103232	8.69	17128	0.229	0.205	0.074	0.123	215.850271	33.571936	-2280.98	-171.65

2.4 Star Slots

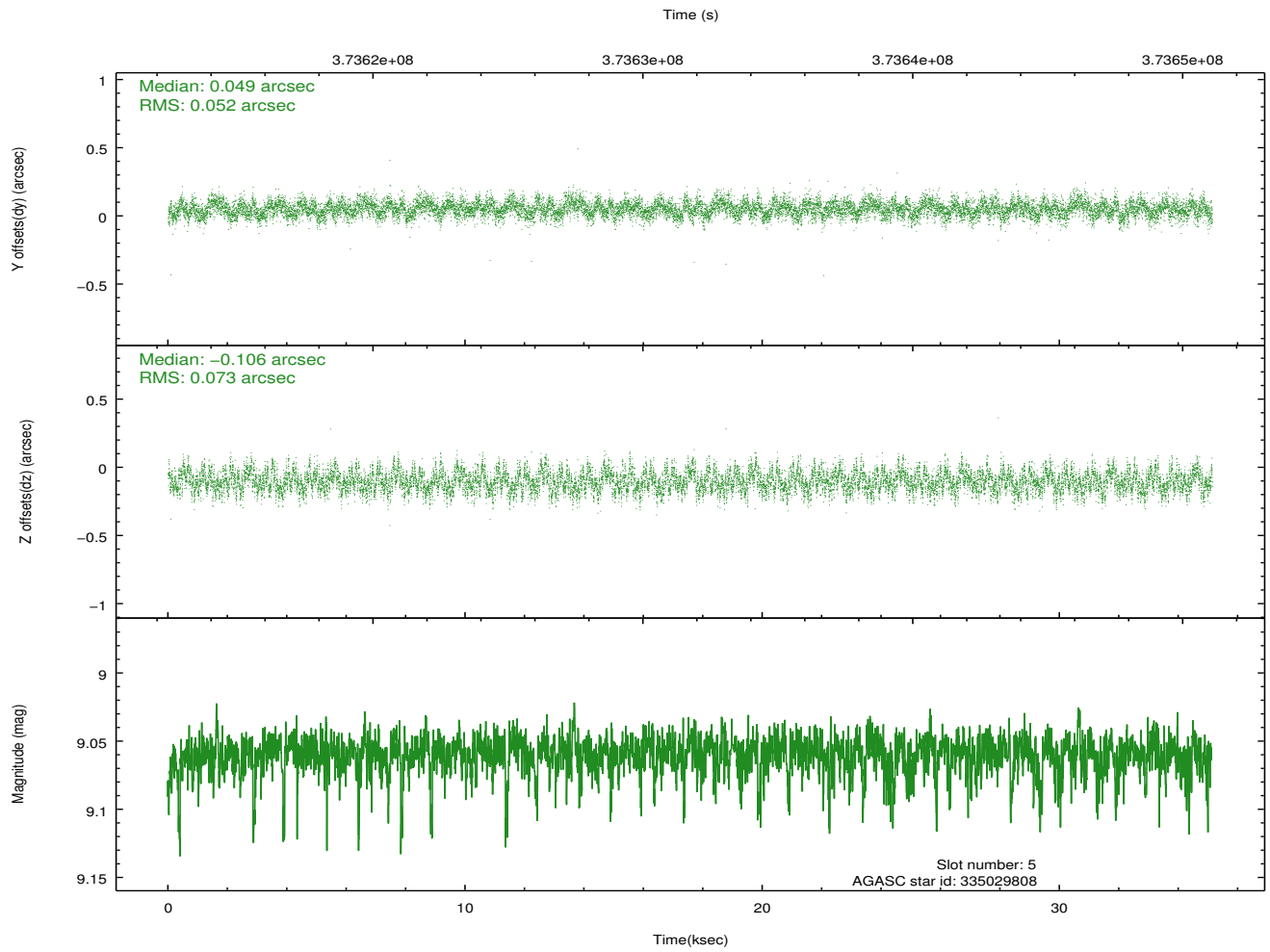
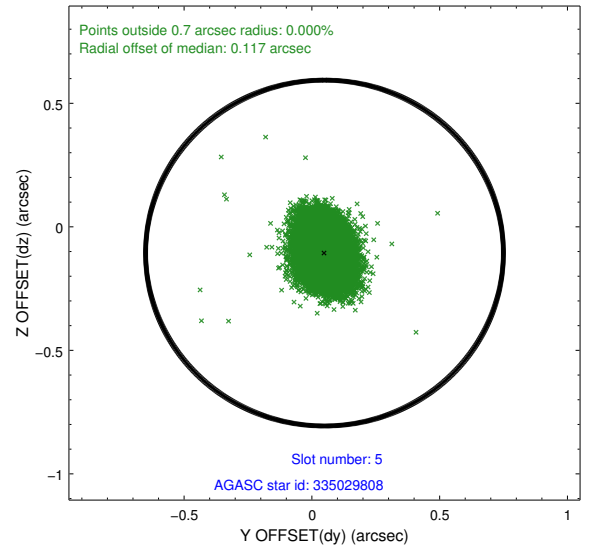
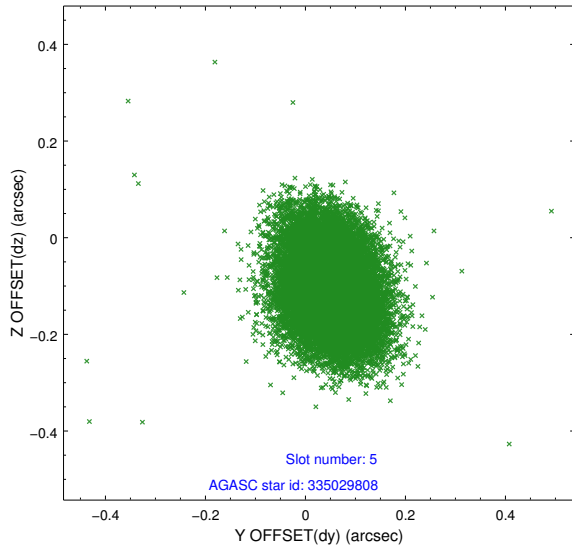
2.4.1 Slot 3



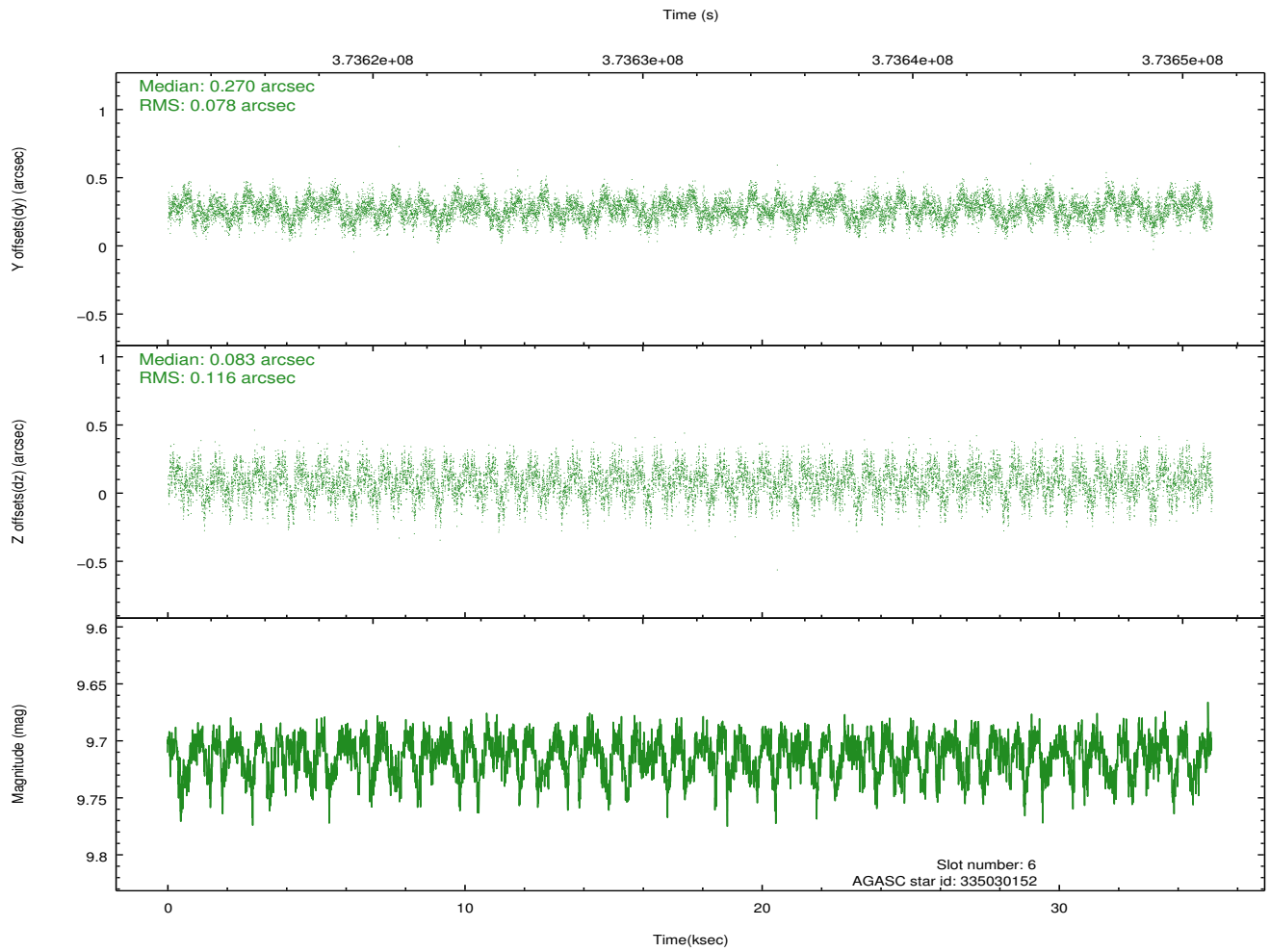
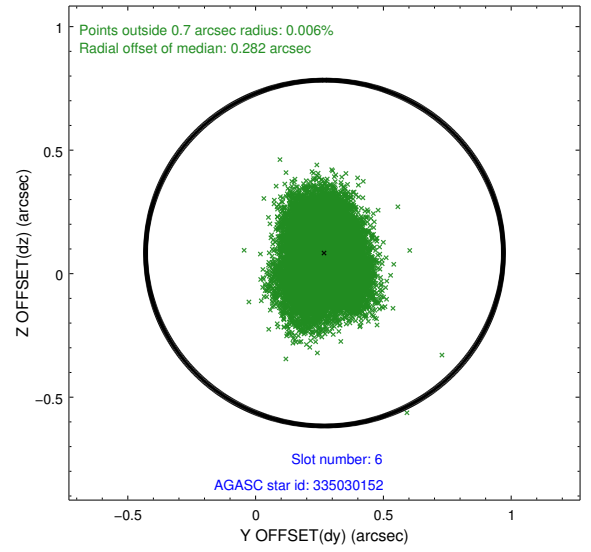
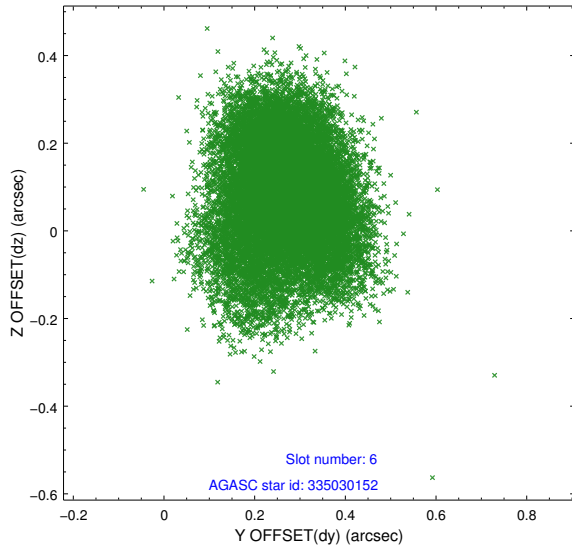
2.4.2 Slot 4



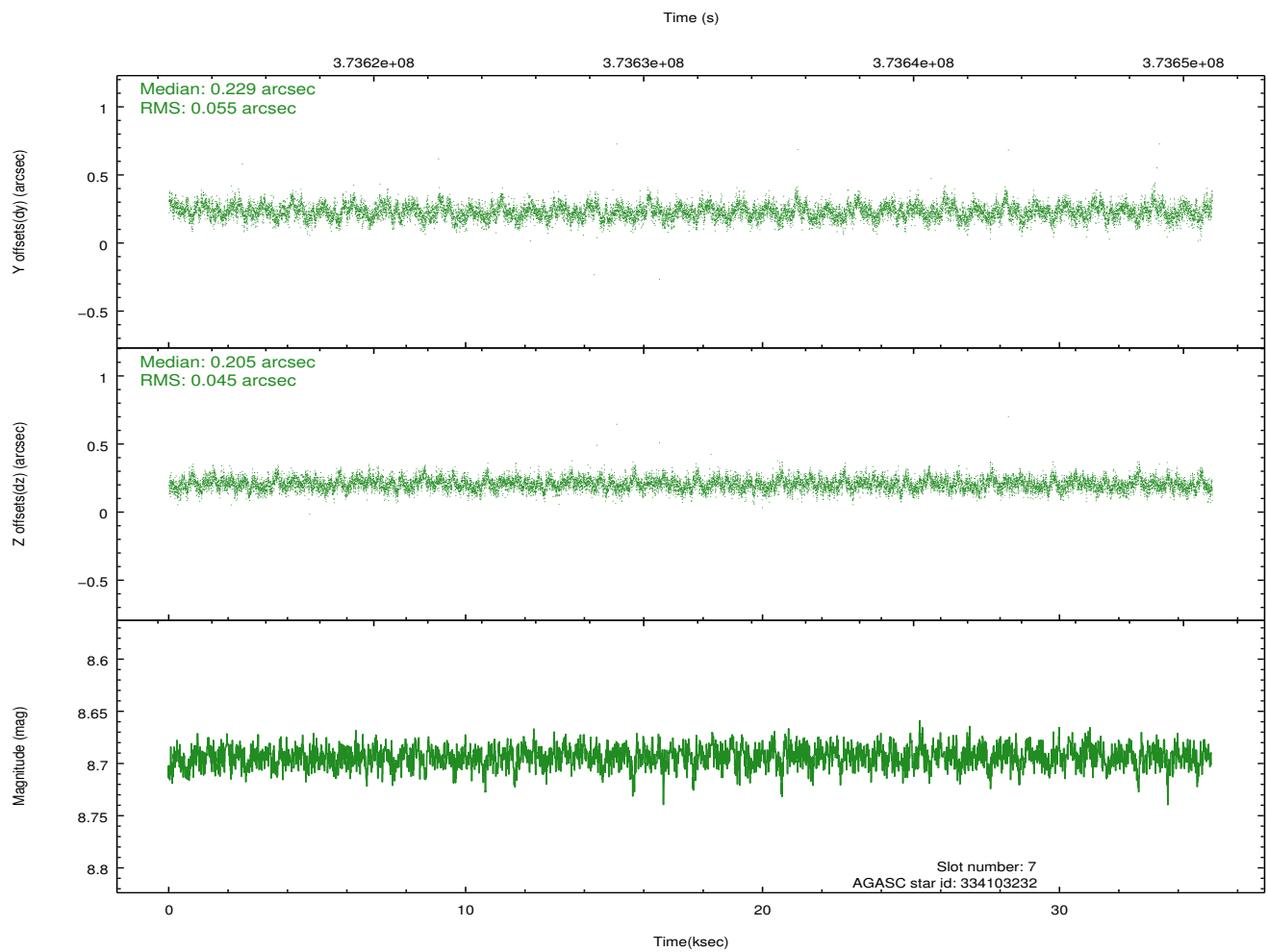
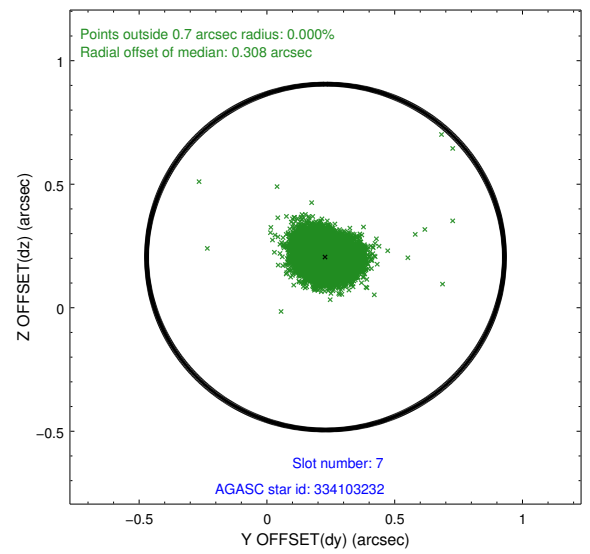
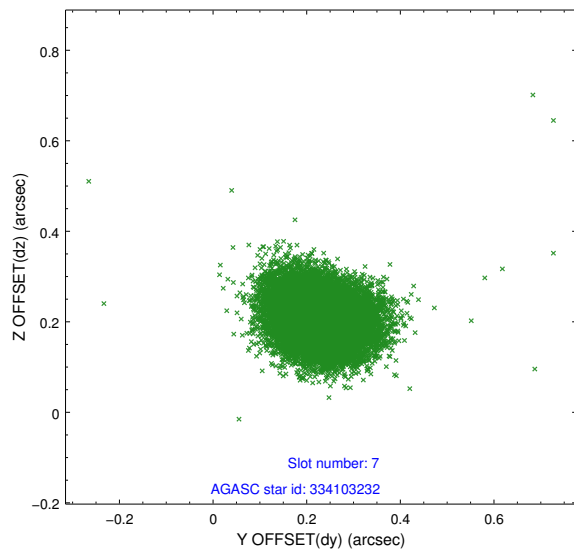
2.4.3 Slot 5



2.4.4 Slot 6

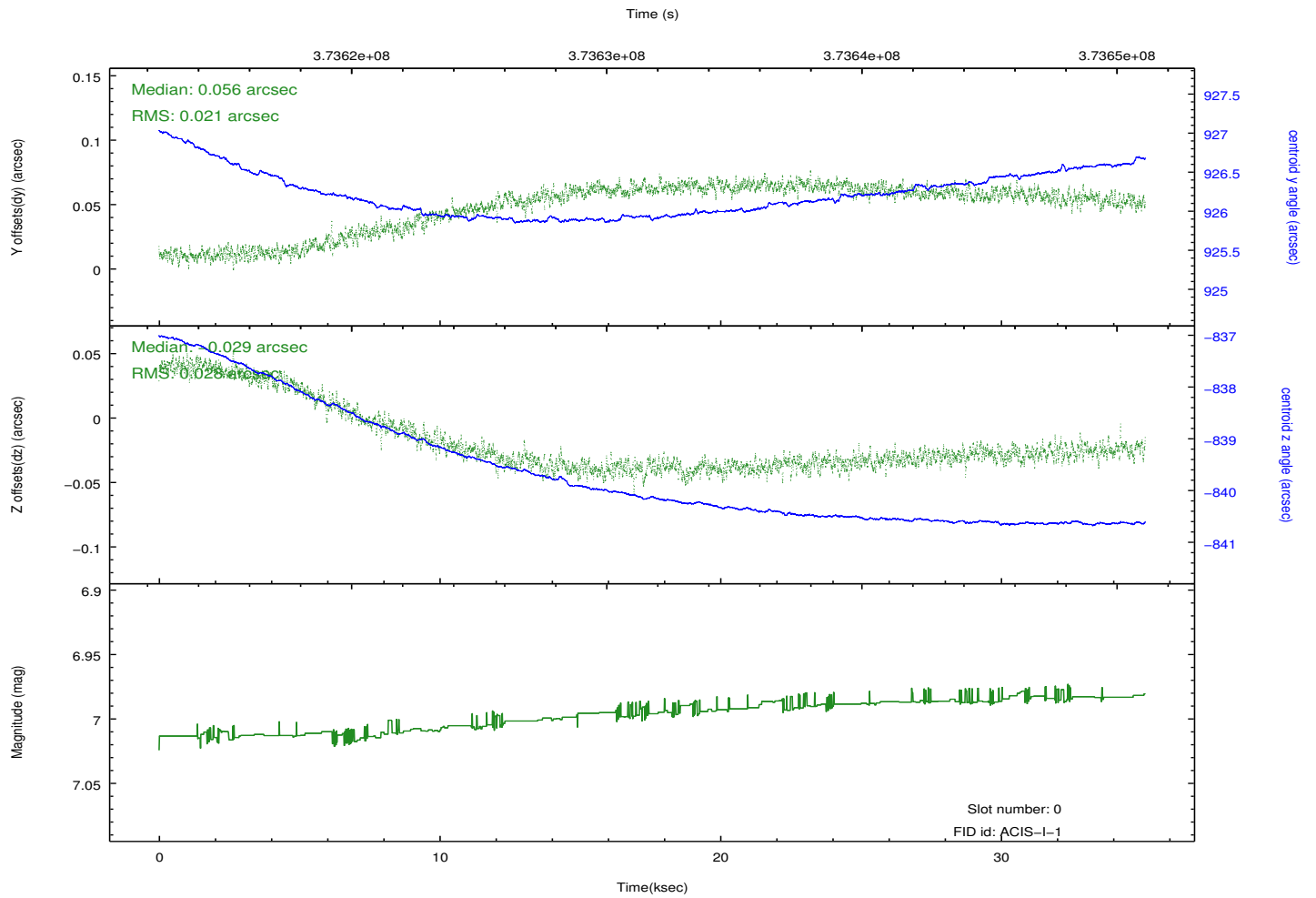
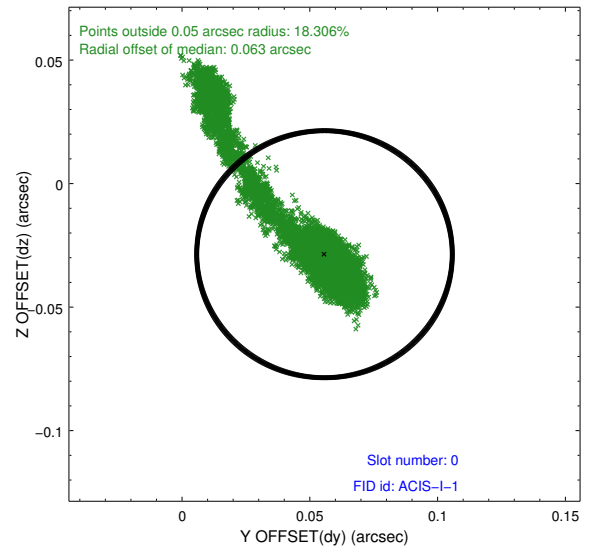
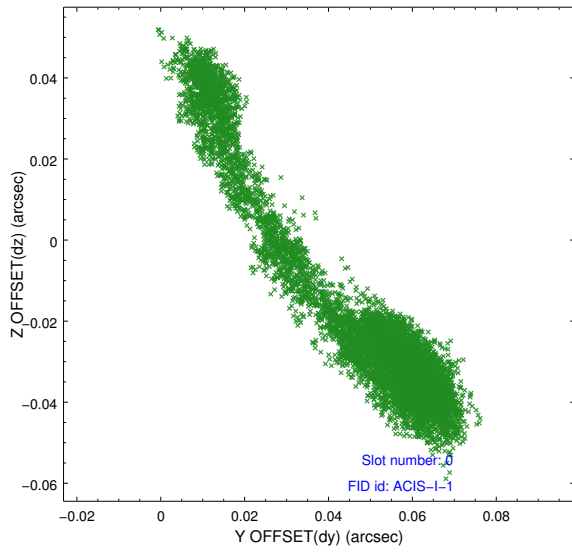


2.4.5 Slot 7

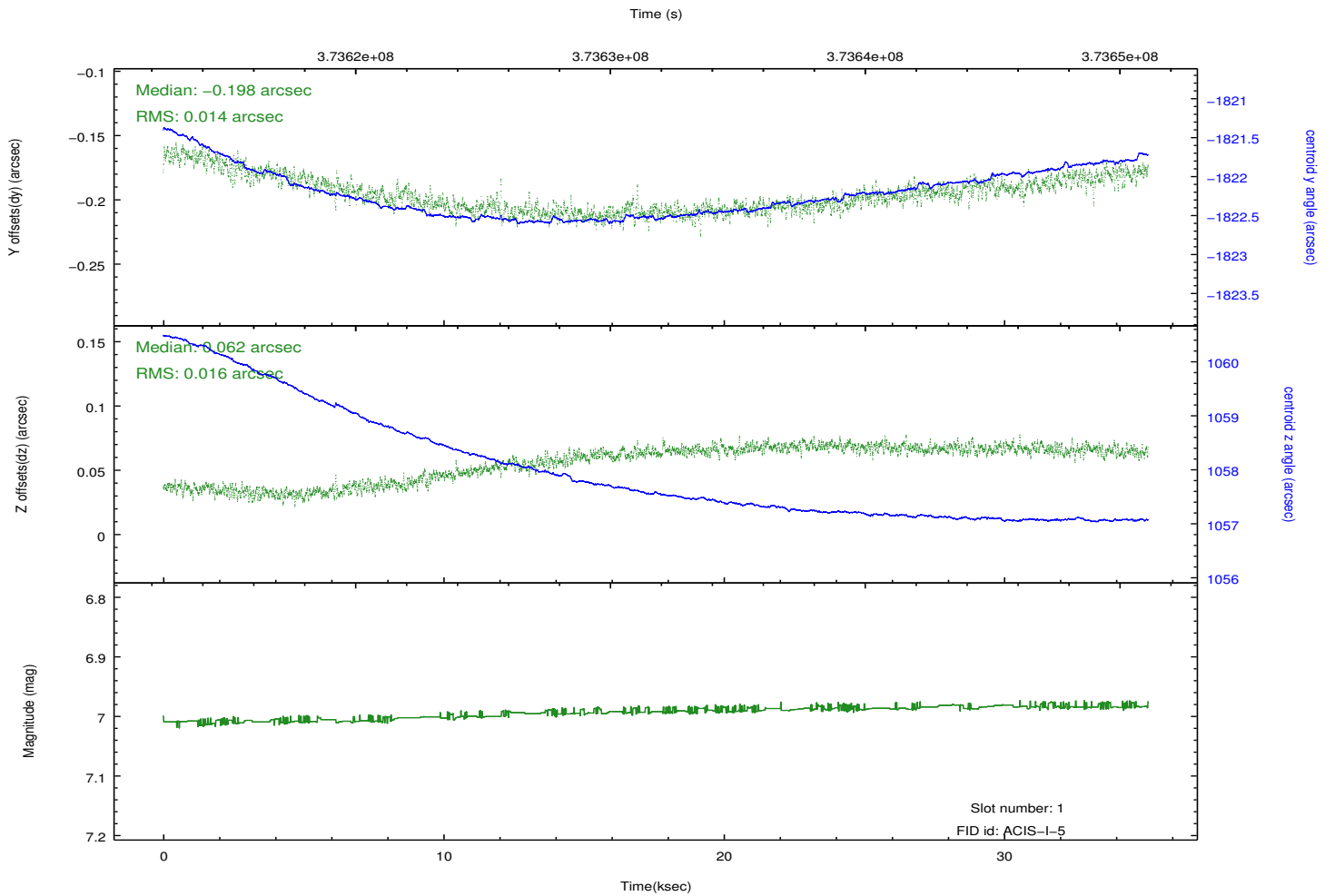
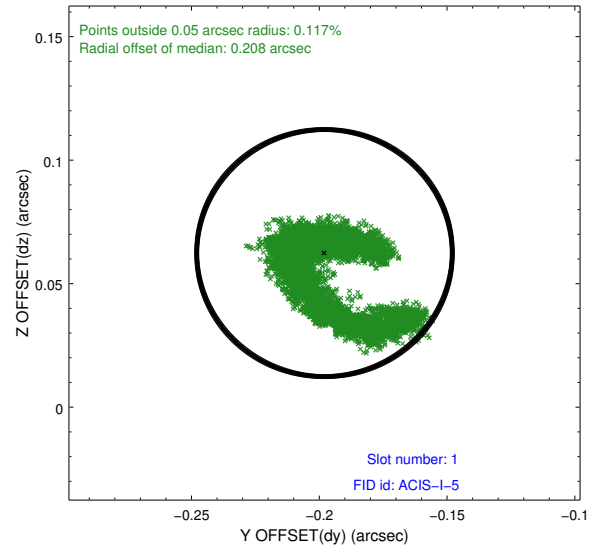
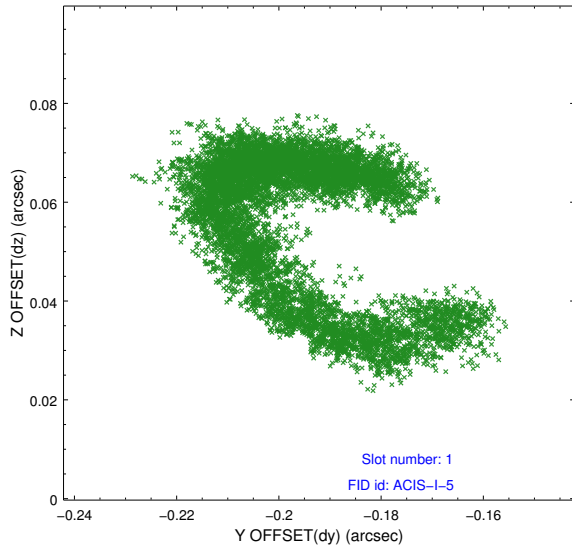


2.5 FID Slots

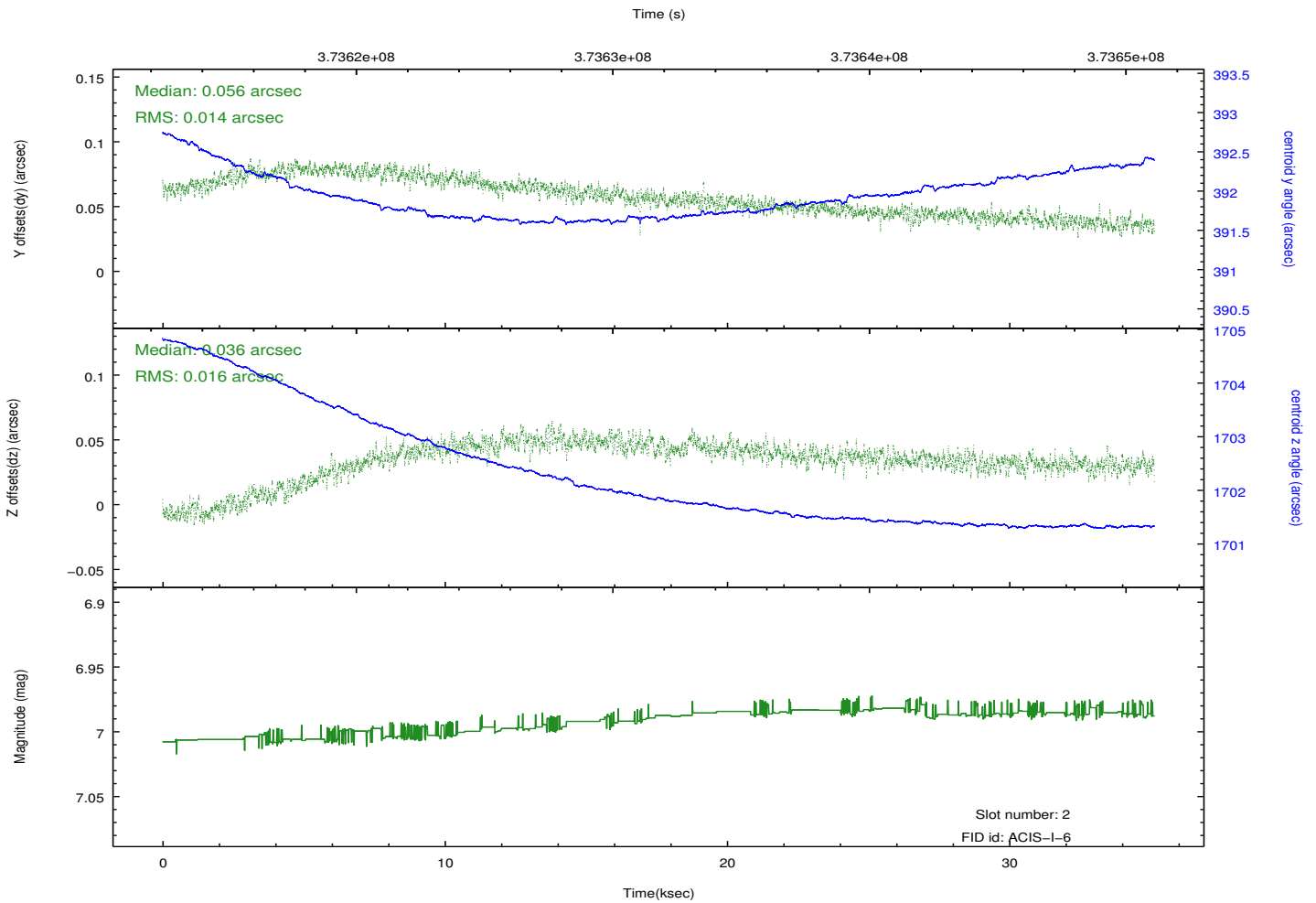
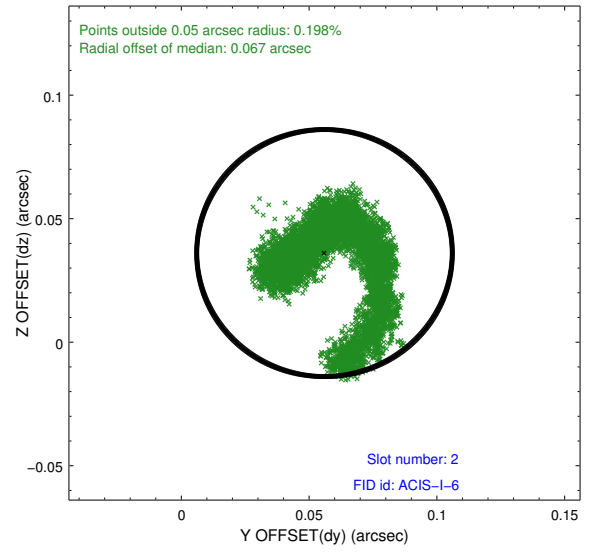
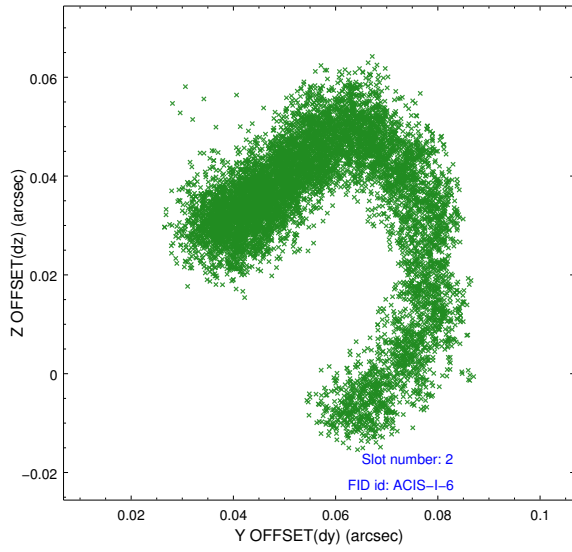
2.5.1 Slot 0



2.5.2 Slot 1



2.5.3 Slot 2



A Summary

A.1 Status

V&V Scientist	Beth Sundheim
V&V Date (YYYY-MM-DD)	2012.06.20
V&V Edition	1
V&V Disposition and Status	OK
V&V Charge Time	35.129118319631

A.2 Comments