

V&V Reference Report

L2 ASCDS Version : 8.4.4

Observation 10563 - L2 Version 3
Chandra X-Ray Center

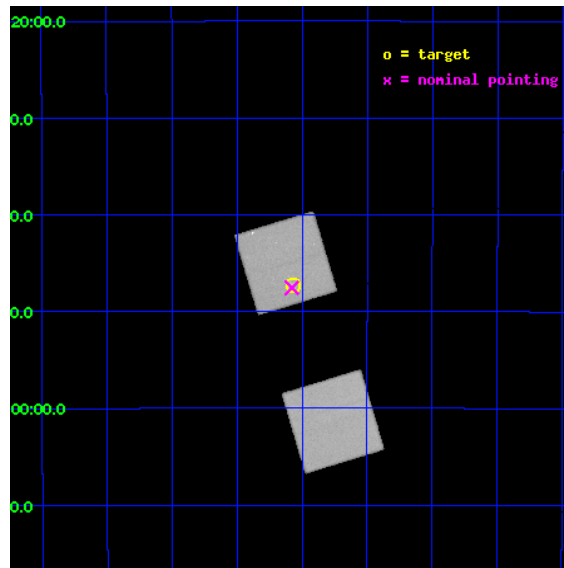
L2 Processing Date : Jun 2 2012

Contents

1	Front	2
2	OBI	3
2.1	OBI	3
2.1.1	Images	3
2.1.2	Bias	3
2.1.3	Parameters	4
2.1.4	Events	4
2.2	Compared Parameters	5
2.3	Aspect	6
2.4	Star Slots	9
2.4.1	Slot 3	9
2.4.2	Slot 4	10
2.4.3	Slot 5	11
2.4.4	Slot 7	12
2.5	FID Slots	13
2.5.1	Slot 0	13
2.5.2	Slot 1	14
2.5.3	Slot 2	15
A	Summary	16
A.1	Status	16
A.2	Comments	16

1 Front

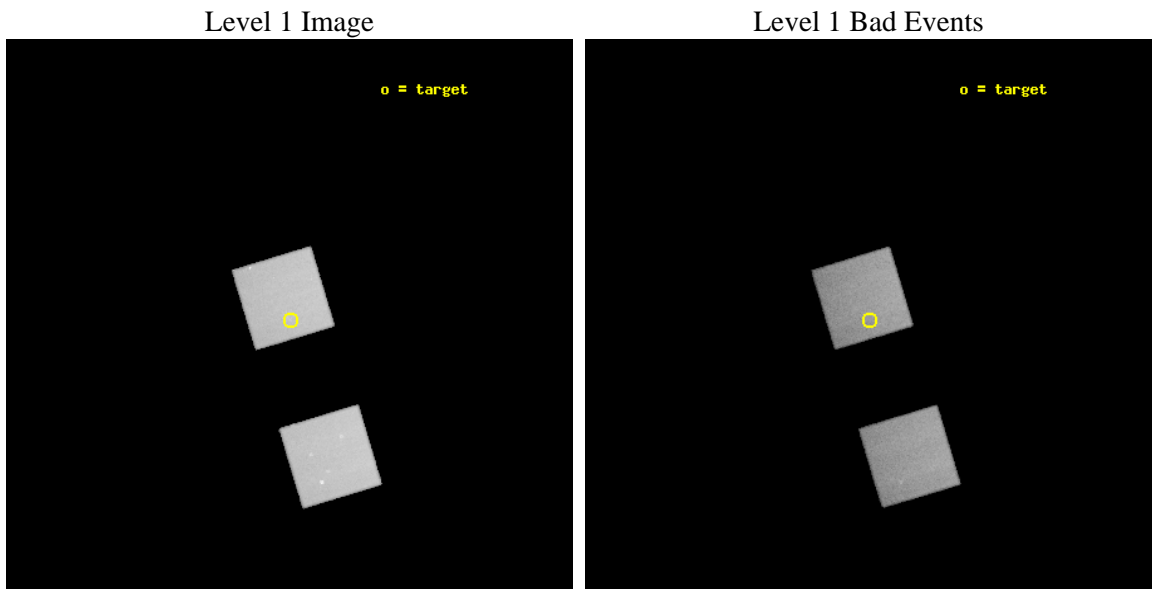
seq_num	600756	Sequence number
obs_id	10563	Observation id
title	Chandra Imaging of NGC 922 -- the closest collisional ring galaxy	
observer	Dr Andrea Prestwich	Principal investigator
object	NGC 922	Source name
dtcycle	0	
cycle	P	events from which exps? Prim/Second/Both
ra_targ	36.268333	Observer's specified target RA [deg]
dec_targ	-24.788056	Observer's specified target Dec [deg]
ra_nom	36.26970632308	Nominal RA [deg]
dec_nom	-24.792740246548	Nominal Dec [deg]
roll_nom	253.15715441748	Nominal Roll [deg]
revision	3	Processing version of data
ontime	30144.0	Sum of GTIs [s]
livetime	29737.195170073	Livetime [s]
ontime5	30144.0	Sum of GTIs [s]
ontime7	30144.0	Sum of GTIs [s]
l2events	391018	Number of level 2 events



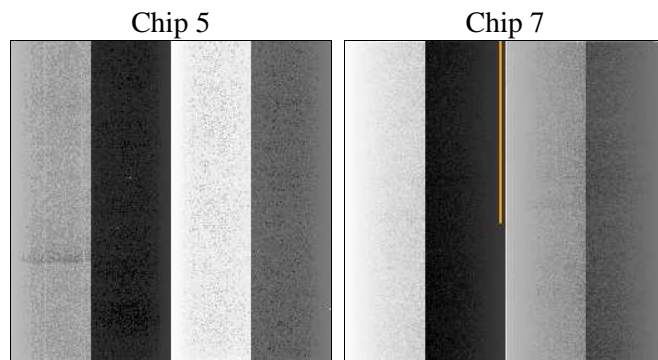
2 OBI

2.1 OBI

2.1.1 Images



2.1.2 Bias



2.1.3 Parameters

obi_num	0	Obi number	sched_exp_time	30000.000000	[s] Scheduled observation exposure time
ascdsver	8.4.4	Processing system revision	ontime	30144.0	Sum of GTIs [s]
caldsver	4.4.9	 	ontime5	30144.0	Sum of GTIs [s]
date	2012-06-02T02:29:17	Date and time of file creation	ontime7	30144.0	Sum of GTIs [s]
revision	3	Processing version of data	l1events	951469	Number of level 1 events

2.1.4 Events

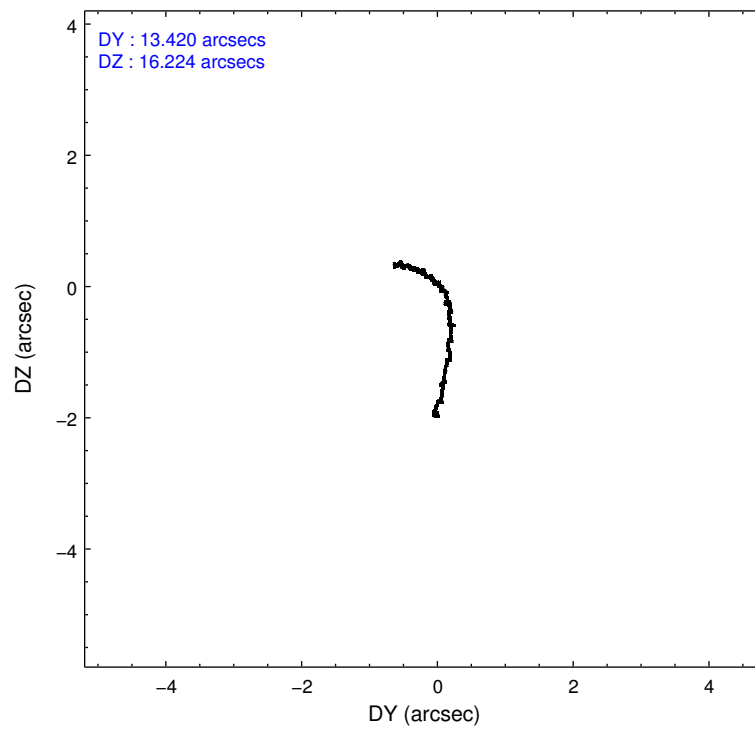
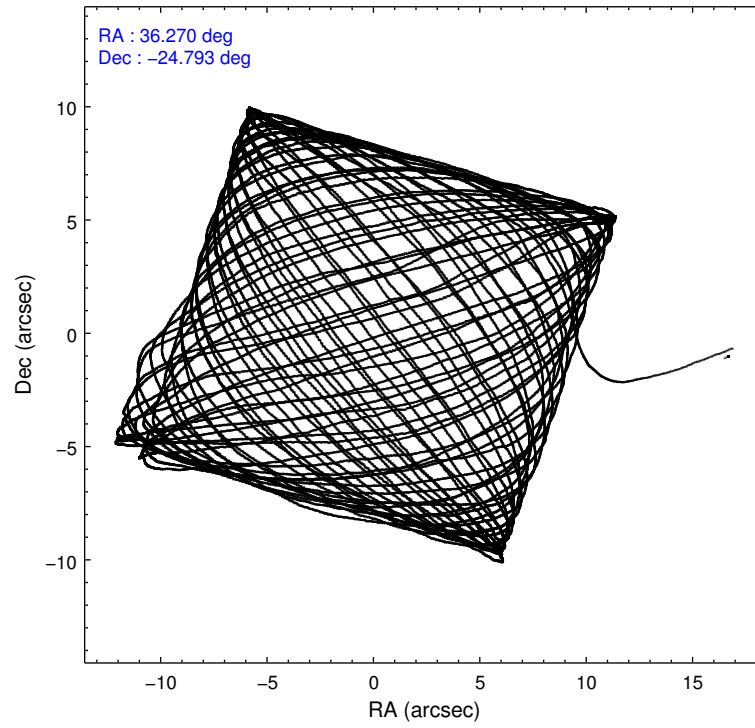
	ccd 5	ccd 7
level 1 events	498606	452863
rejected events	278805	268928
rejected %	55%	59%

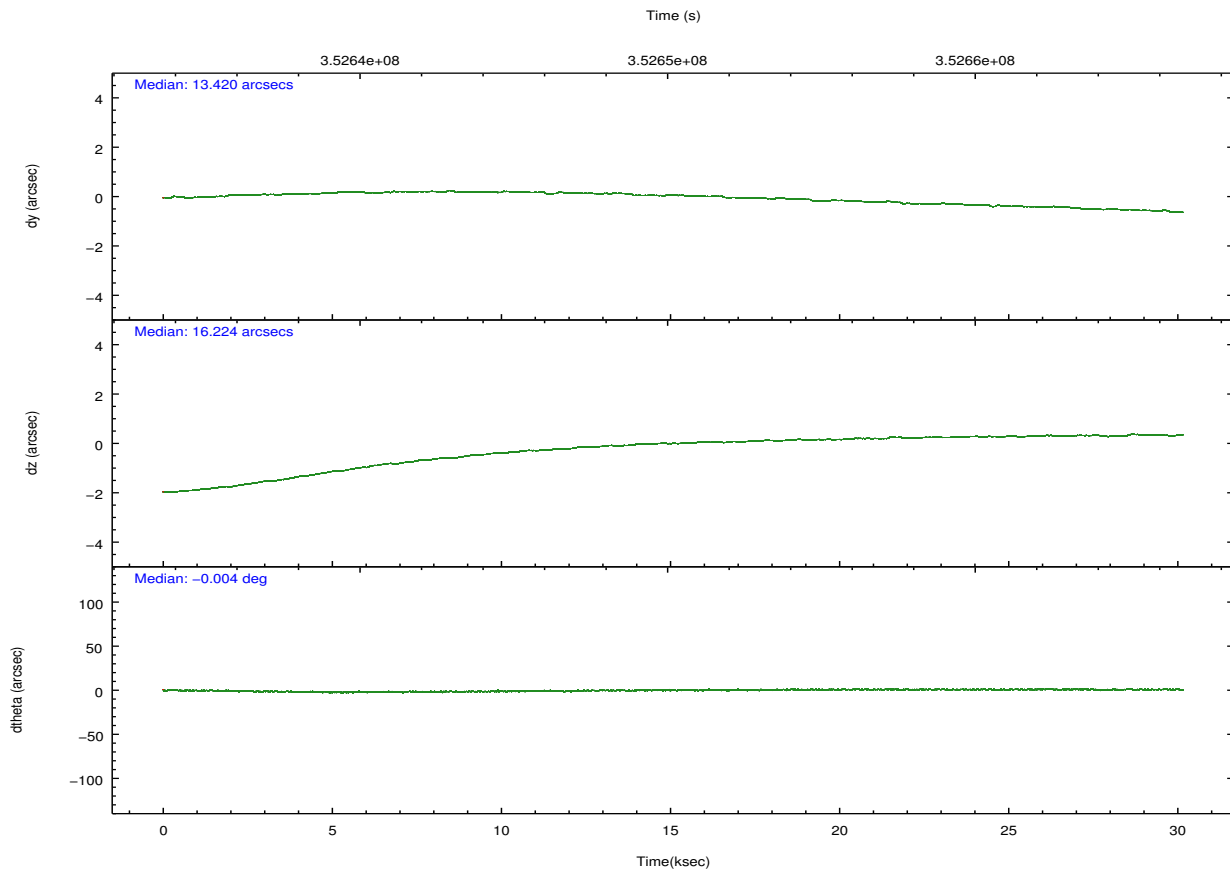
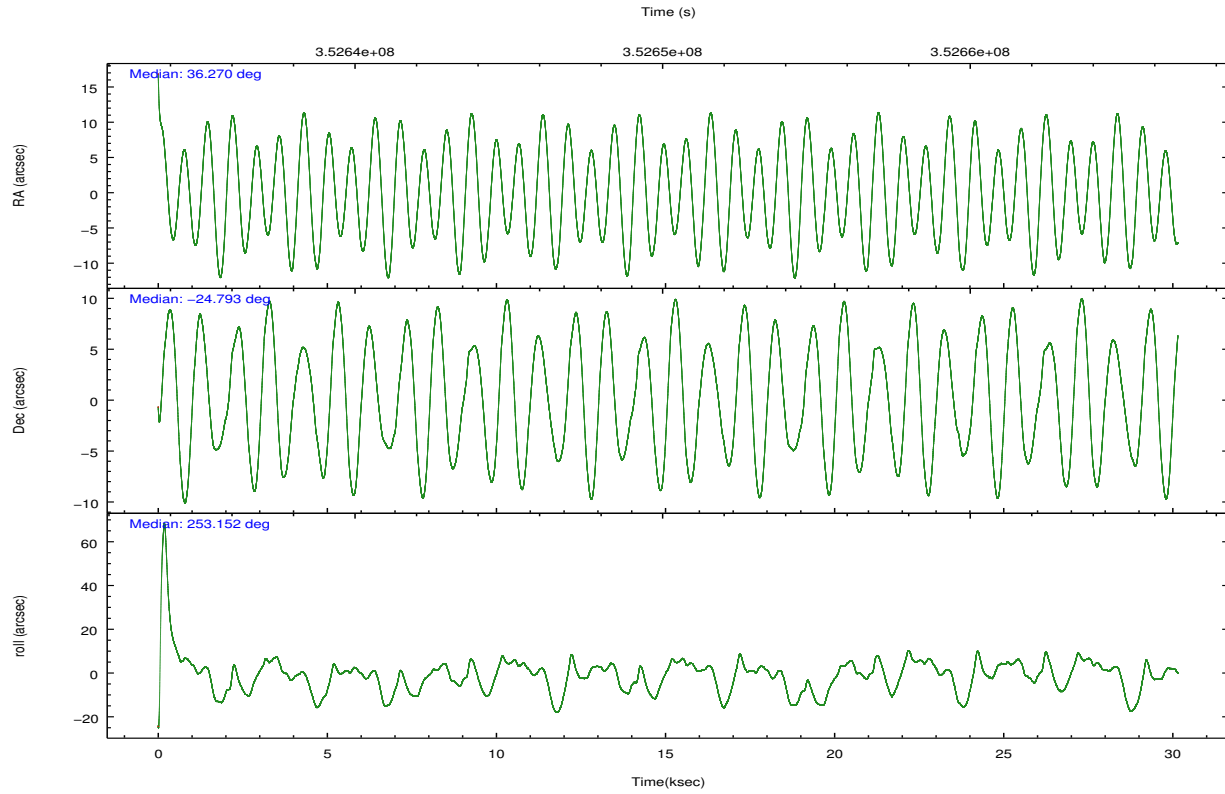
	ccd 5	ccd 7
grade 0 events	17372	16685
	3%	3%
grade 1 events	1111	480
	0%	0%
grade 2 events	71084	39300
	14%	8%
grade 3 events	8110	16198
	1%	3%
grade 4 events	7898	15962
	1%	3%
grade 5 events	35279	42373
	7%	9%
grade 6 events	123557	102533
	24%	22%
grade 7 events	234195	219332
	46%	48%

2.2 Compared Parameters

Parameter	Planned	Actual	Parameter	Planned	Actual
Instrument	ACIS	ACIS	Obspar format version number	7	7
Detector	ACIS-57	ACIS-57	Obspar file type	PREDICTED	ACTUAL
Grating	NONE	NONE	Obspar update status	NONE	UPDATED
Data mode	VFAINT	VFAINT	CCD I0 on	N	N
Observation mode	POINTING	POINTING	CCD I1 on	N	N
[deg] Pointing RA	36.262442	36.26970632307995	CCD I2 on	N	N
[deg] Pointing Dec	-24.766202	-24.79274024654805	CCD I3 on	N	N
[deg] Pointing Roll	252.997531	253.1571544174757	CCD S0 on	N	N
[mm] SIM focus pos	-0.684267	-0.6828225247311905	CCD S1 on	O1	Y
[mm] SIM defocus	0	0.001444936568705701	CCD S2 on	N	N
[mm] SIM translation stage pos	-190.132523	-190.1425803651734	CCD S3 on	Y	Y
[mm] SIM translation stage offset	0	0.01005778216563158	CCD S4 on	N	N
[s] Observation start time (MET)	352635255.184000	352633929.25664	CCD S5 on	N	N
Observation start date	2009-03-05T10:13:09	2009-03-05T09:52:09	Number of optional ACIS chips dropped	0	0
[s] Observation end time (MET)	352665255.184000	352665891.32073	On-chip summing requested	N	N
Observation end date	2009-03-05T18:33:09	2009-03-05T18:44:51	Subarray requested	NONE	NONE
Read mode	TIMED	TIMED	Alternating exposures requested	N	N
			[s] Primary exposure time	0.000000	3

2.3 Aspect



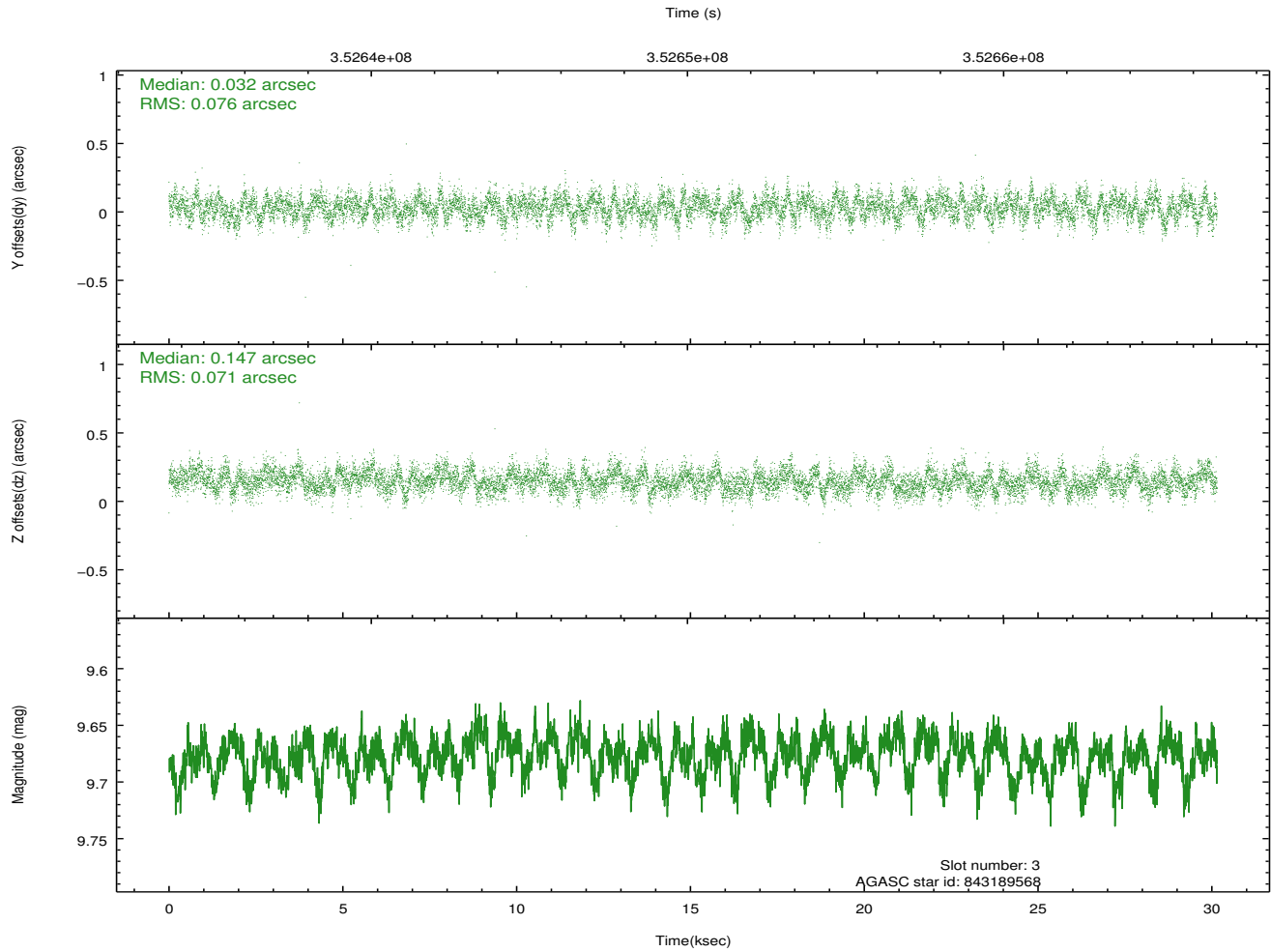
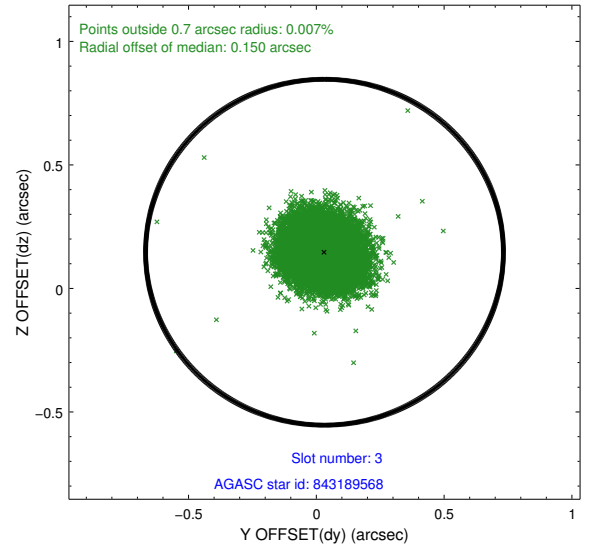
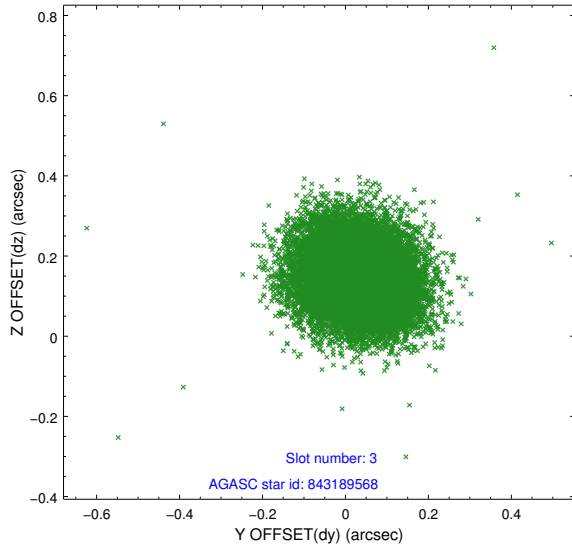


Slot Statistics

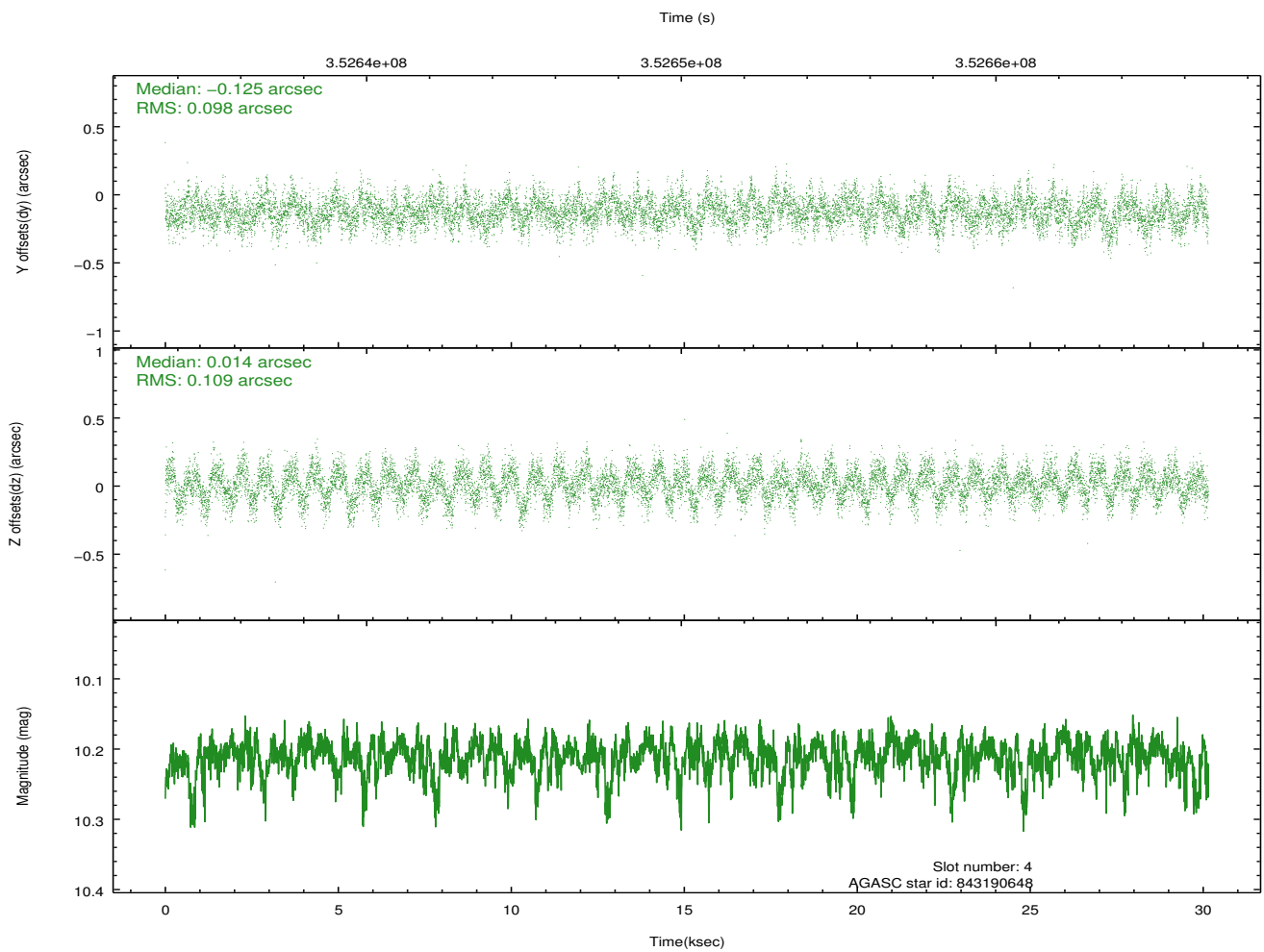
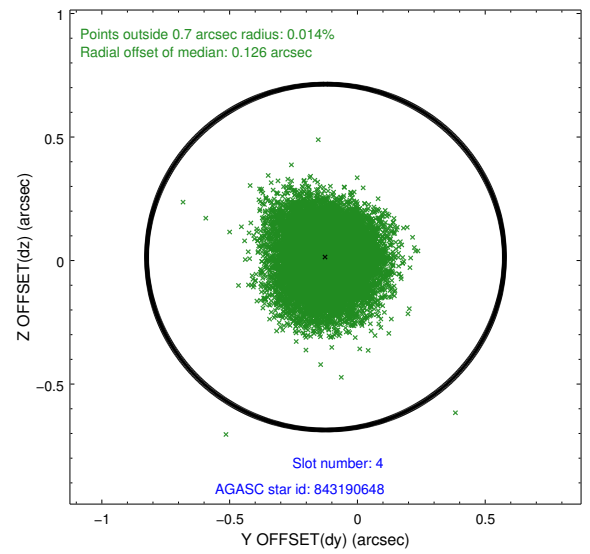
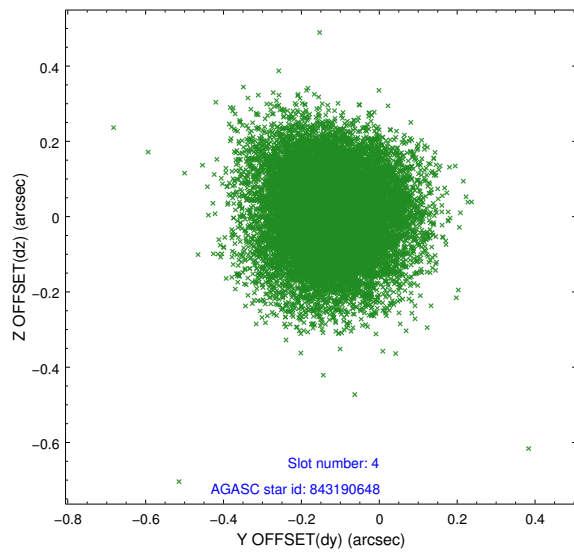
slot	status	id	mag	n_pts	med_dy	med_dz	dr1	dr2	ra	dec	mean_y	mean_z
0	FID	ACIS-S-2	6.90	7355	-0.041	-0.016	0.016	0.023	0.000000	0.000000	-766.29	-1737.29
1	FID	ACIS-S-4	6.98	7355	0.170	0.024	0.017	0.027	0.000000	0.000000	2147.15	171.18
2	FID	ACIS-S-5	7.01	7355	-0.158	0.001	0.010	0.016	0.000000	0.000000	-1819.17	164.88
3	GUIDE	843189568	9.68	14682	0.032	0.147	0.111	0.179	36.830938	-24.518772	-1391.96	1521.75
4	GUIDE	843190648	10.21	14678	-0.125	0.014	0.157	0.251	36.453998	-24.480010	-1167.73	299.65
5	GUIDE	843193880	9.43	14693	-0.224	-0.075	0.114	0.178	36.065163	-25.094581	1319.50	-268.79
6	OMITTED		0.00	0	0.000	0.000	0.000	0.000	0.000000	0.000000	0.00	0.00
7	GUIDE	843205416	8.11	14706	0.323	-0.091	0.085	0.144	35.547807	-25.199604	2179.99	-1767.67

2.4 Star Slots

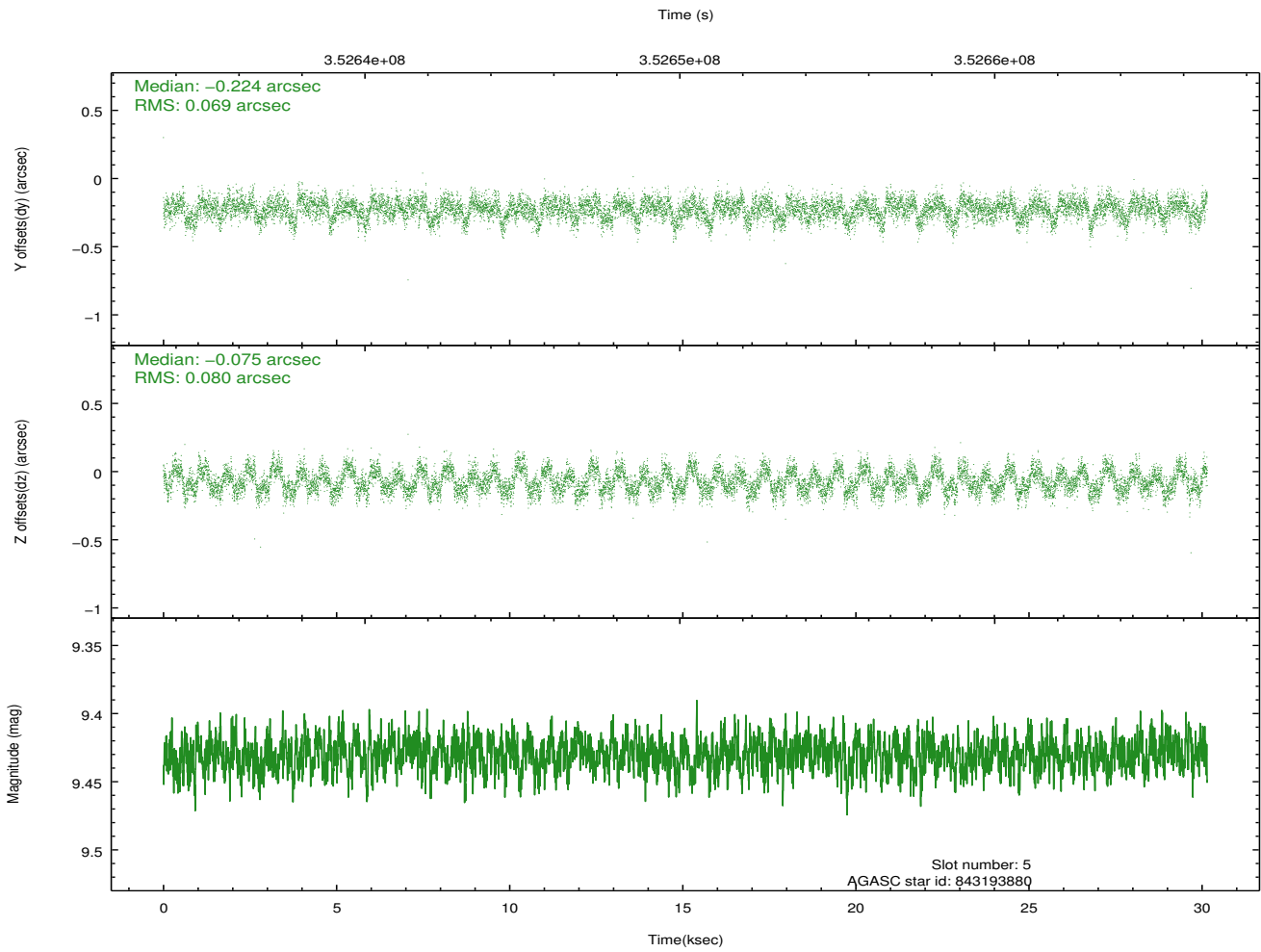
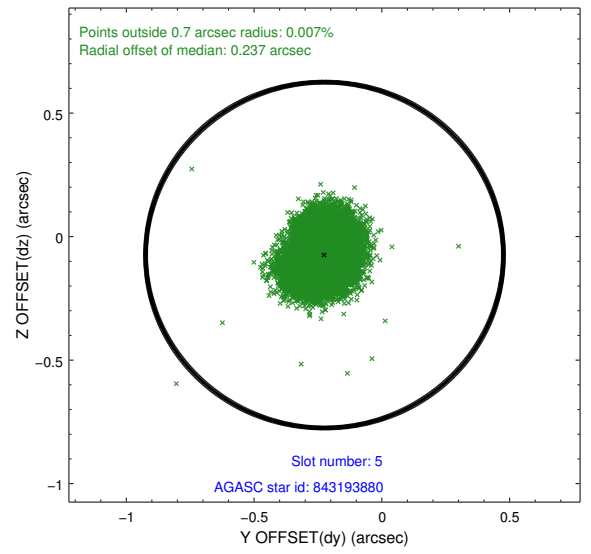
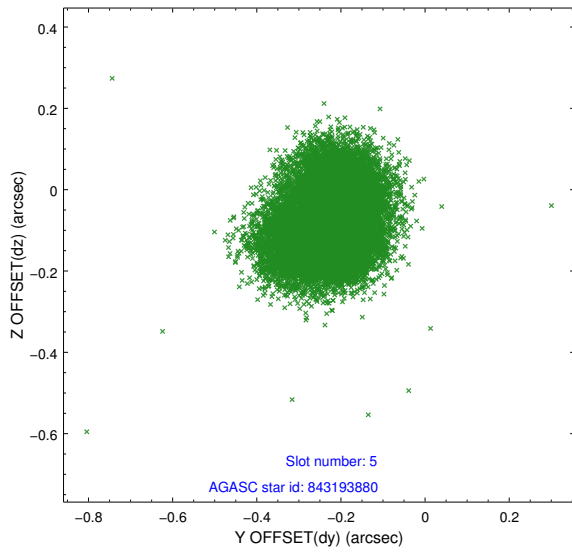
2.4.1 Slot 3



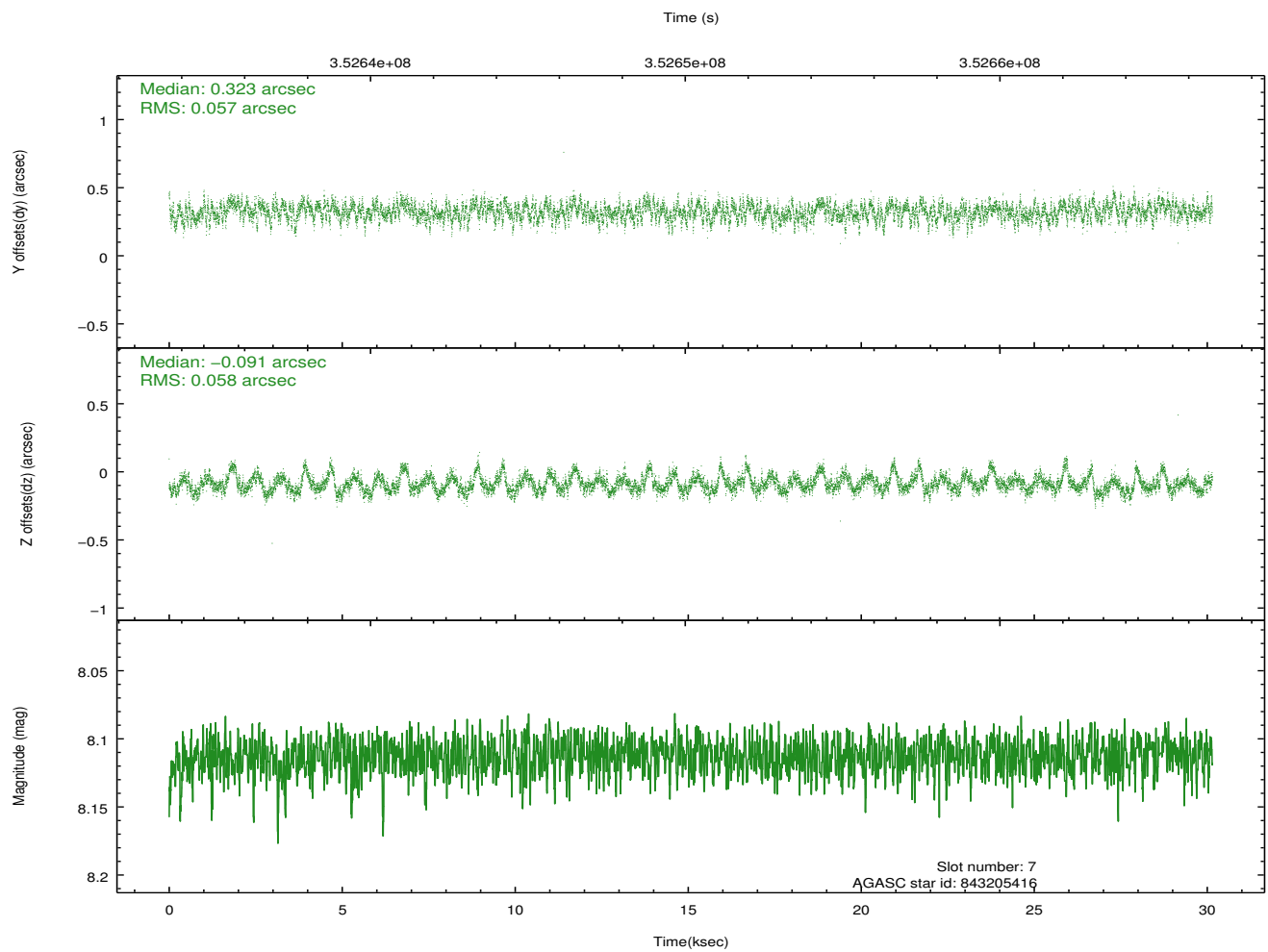
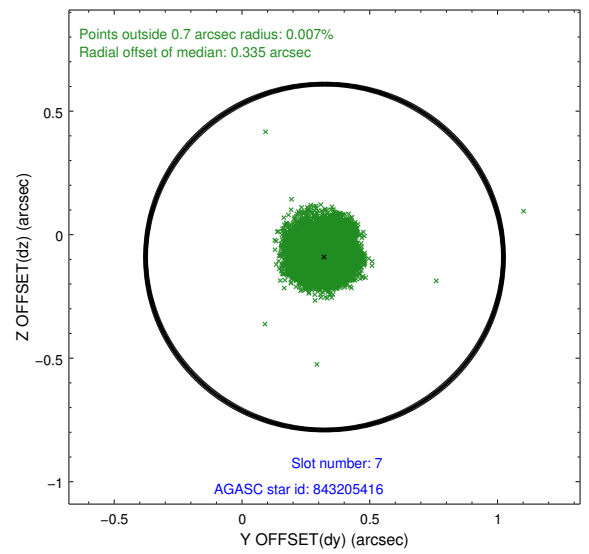
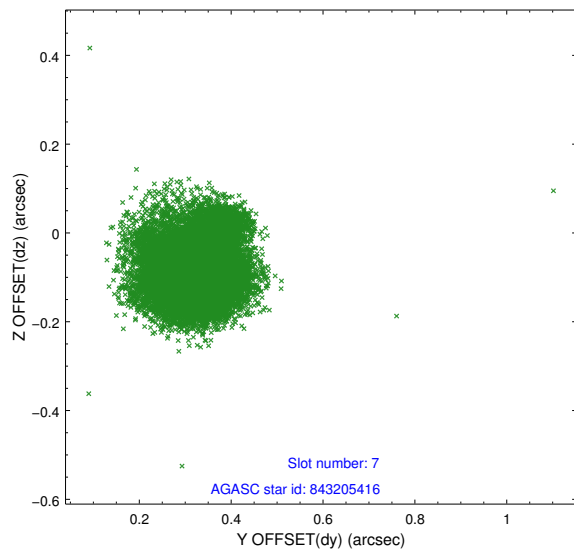
2.4.2 Slot 4



2.4.3 Slot 5

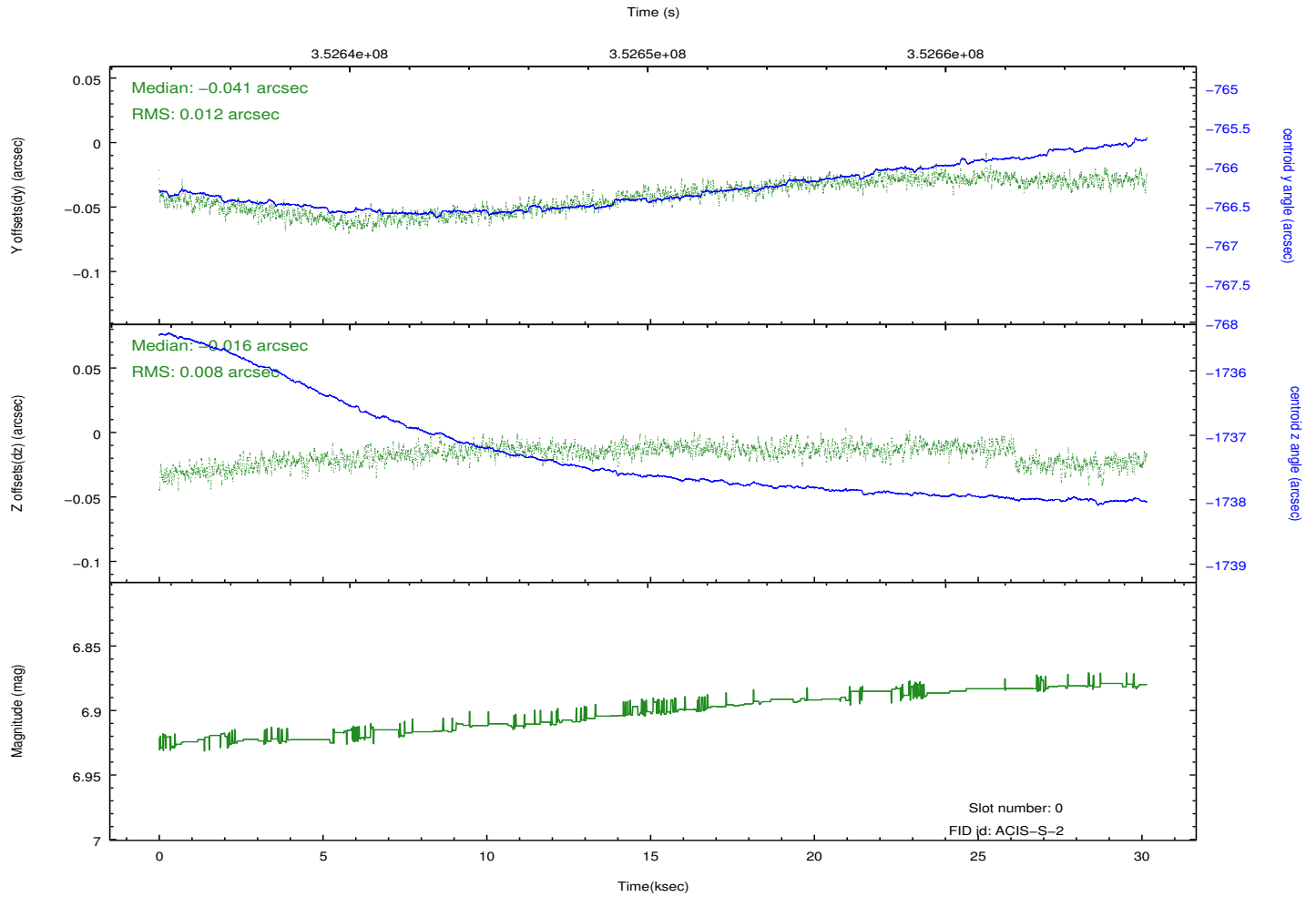
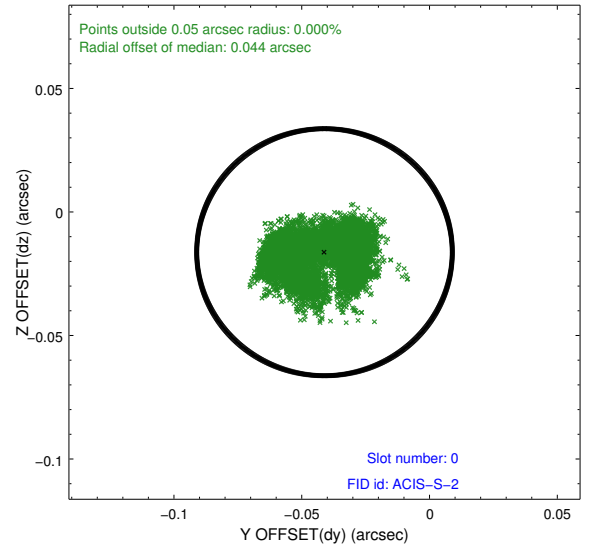
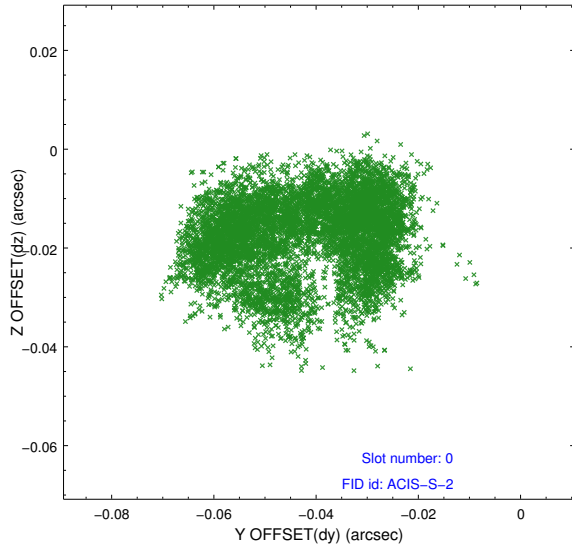


2.4.4 Slot 7

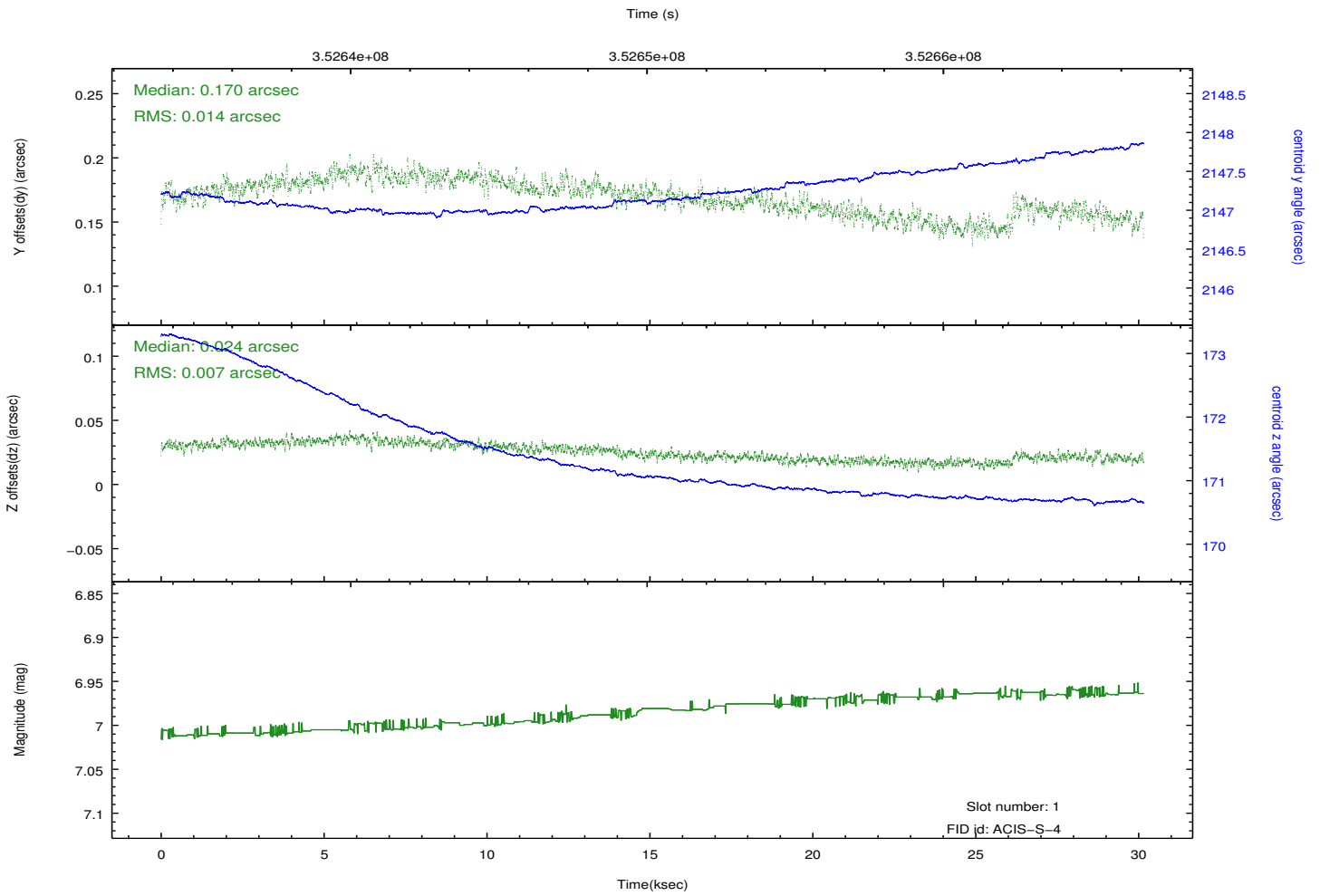
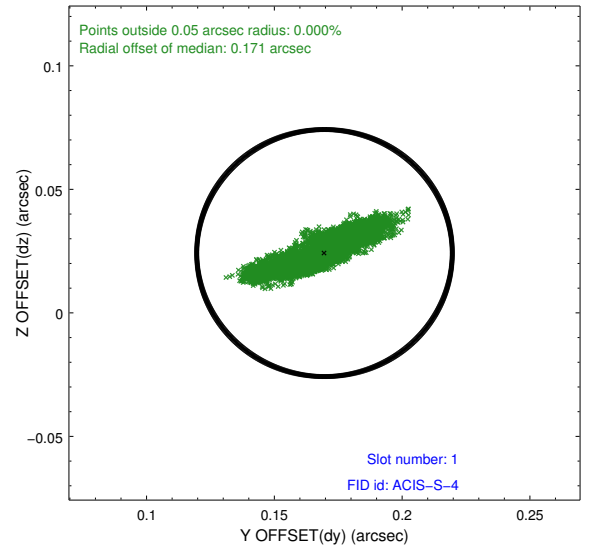
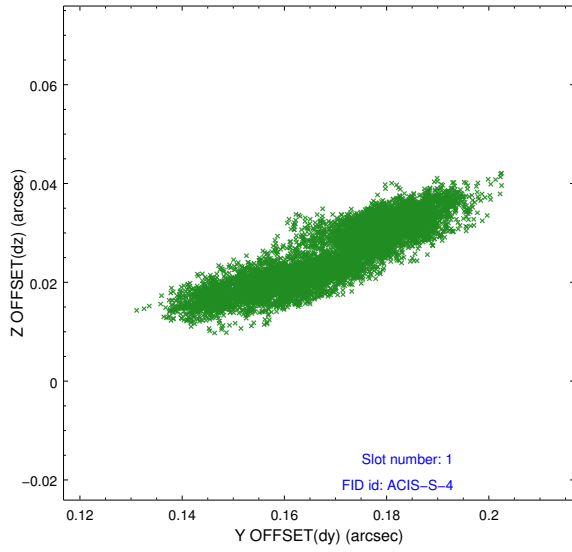


2.5 FID Slots

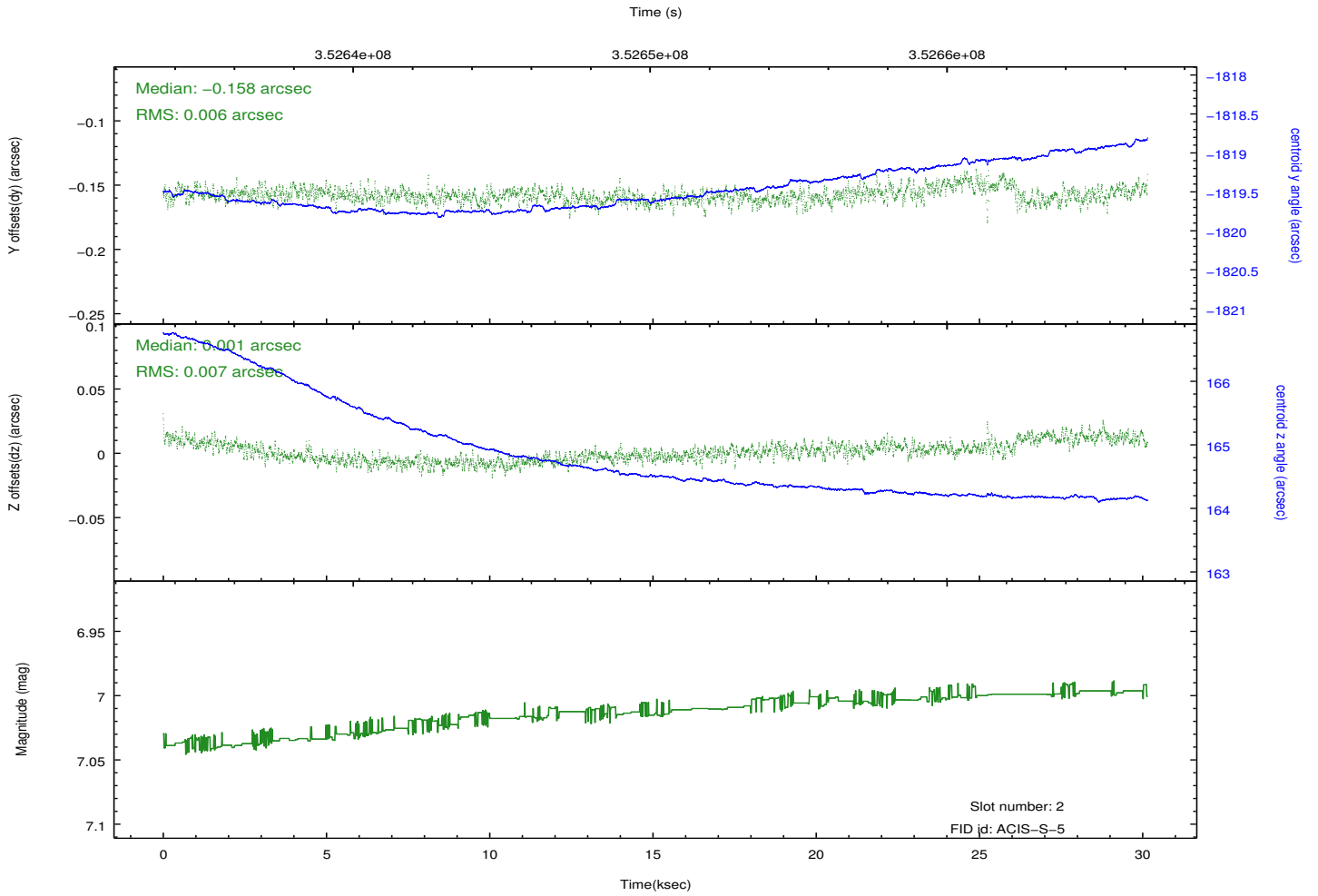
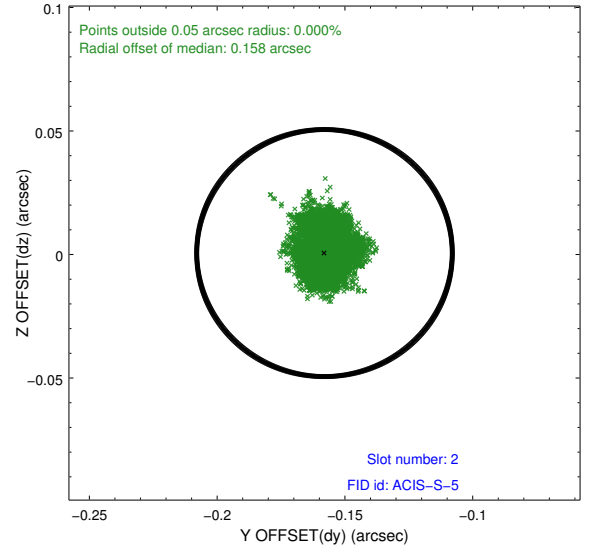
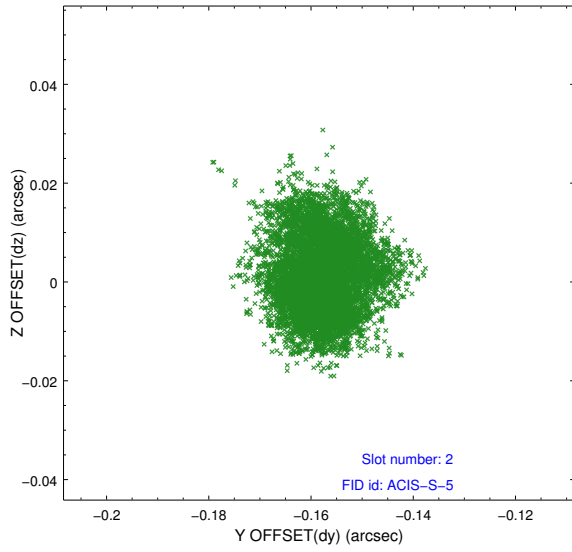
2.5.1 Slot 0



2.5.2 Slot 1



2.5.3 Slot 2



A Summary

A.1 Status

V&V Scientist	Jen Lauer
V&V Date (YYYY-MM-DD)	2012.06.07
V&V Edition	1
V&V Disposition and Status	OK
V&V Charge Time	30.144

A.2 Comments

The guide star in slot 6 was removed from the aspect solution due to poor data quality. The aspect solution is improved by the removal of this guide star from the solution.

=====

Joint Proposal: HST