

# V&V Reference Report

## L2 ASCDS Version : 8.4.4

Observation 10573 - L2 Version 2  
Chandra X-Ray Center

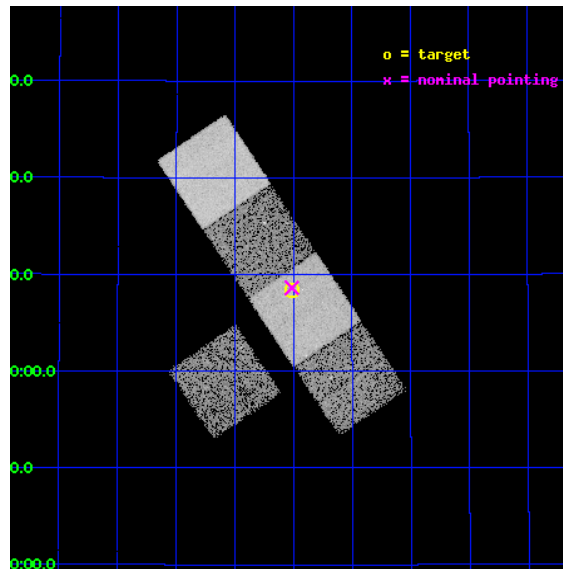
L2 Processing Date : May 21 2012

## Contents

<b>1</b>	<b>Front</b>	<b>2</b>
<b>2</b>	<b>OBI</b>	<b>3</b>
2.1	OBI . . . . .	3
2.1.1	Images . . . . .	3
2.1.2	Bias . . . . .	3
2.1.3	Parameters . . . . .	4
2.1.4	Events . . . . .	4
2.2	Compared Parameters . . . . .	5
2.3	Aspect . . . . .	6
2.4	Star Slots . . . . .	9
2.4.1	Slot 3 . . . . .	9
2.4.2	Slot 4 . . . . .	10
2.4.3	Slot 5 . . . . .	11
2.4.4	Slot 6 . . . . .	12
2.4.5	Slot 7 . . . . .	13
2.5	FID Slots . . . . .	14
2.5.1	Slot 0 . . . . .	14
2.5.2	Slot 1 . . . . .	15
2.5.3	Slot 2 . . . . .	16
<b>A</b>	<b>Summary</b>	<b>17</b>
A.1	Status . . . . .	17
A.2	Comments . . . . .	17

# 1 Front

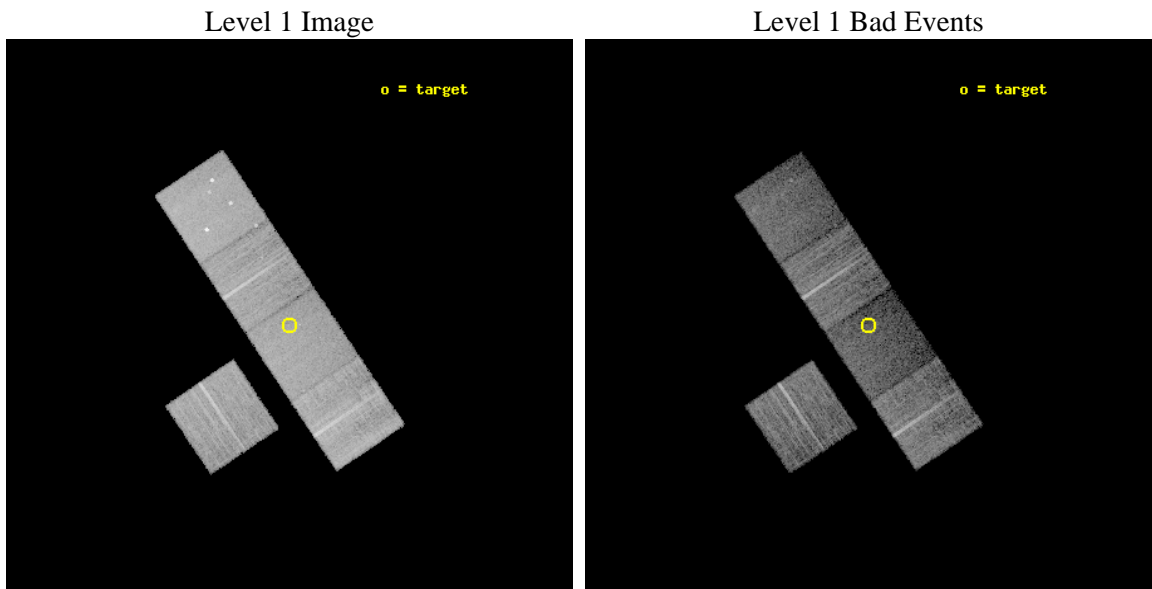
seq_num	501152	Sequence number
obs_id	10573	Observation id
title	The X-ray light-curve of GRB 080307	Proposal title
observer	Dr Kim Page	Principal investigator
object	GRB 080307	Source name
dtcycle	0	&#160
cycle	P	events from which exps? Prim/Second/Both
ra_targ	136.627917	Observer's specified target RA [deg]
dec_targ	35.138861	Observer's specified target Dec [deg]
ra_nom	136.62817868417	Nominal RA [deg]
dec_nom	35.143713595261	Nominal Dec [deg]
roll_nom	56.156485885736	Nominal Roll [deg]
revision	2	Processing version of data
ontime	10152.500078082	Sum of GTIs [s]
livetime	10019.8501904	Livetime [s]
ontime3	10149.359117746	Sum of GTIs [s]
ontime5	10152.500078082	Sum of GTIs [s]
ontime6	10152.500078082	Sum of GTIs [s]
ontime7	10152.500078082	Sum of GTIs [s]
ontime8	10152.500078082	Sum of GTIs [s]
l2events	106860	Number of level 2 events



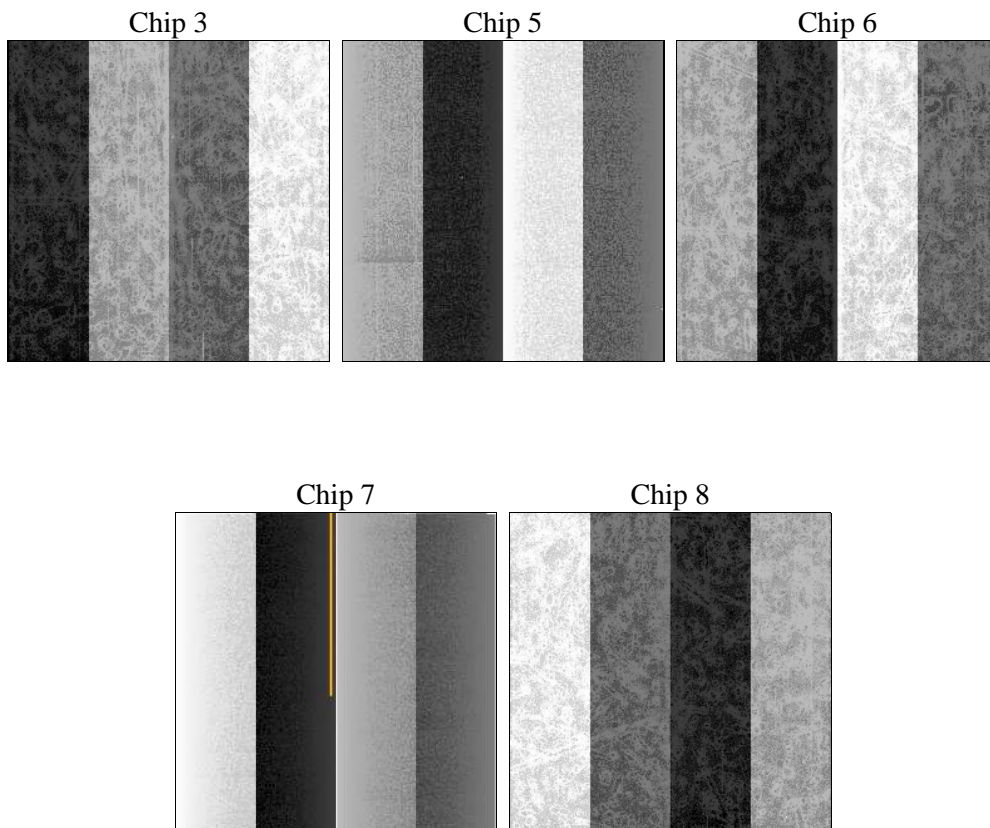
## 2 OBI

### 2.1 OBI

#### 2.1.1 Images



#### 2.1.2 Bias



### 2.1.3 Parameters

obi_num	0	Obi number	sched_exp_time	10000.000000	[s] Scheduled observation exposure time
ascdsver	8.4.4	Processing system revision	ontime	10152.500078082	Sum of GTIs [s]
caldsver	4.4.9	&#160	ontime3	10149.359117746	Sum of GTIs [s]
date	2012-05-21T20:40:15	Date and time of file creation	ontime5	10152.500078082	Sum of GTIs [s]
revision	2	Processing version of data	ontime6	10152.500078082	Sum of GTIs [s]
			ontime7	10152.500078082	Sum of GTIs [s]
			ontime8	10152.500078082	Sum of GTIs [s]
			l1events	436176	Number of level 1 events

### 2.1.4 Events

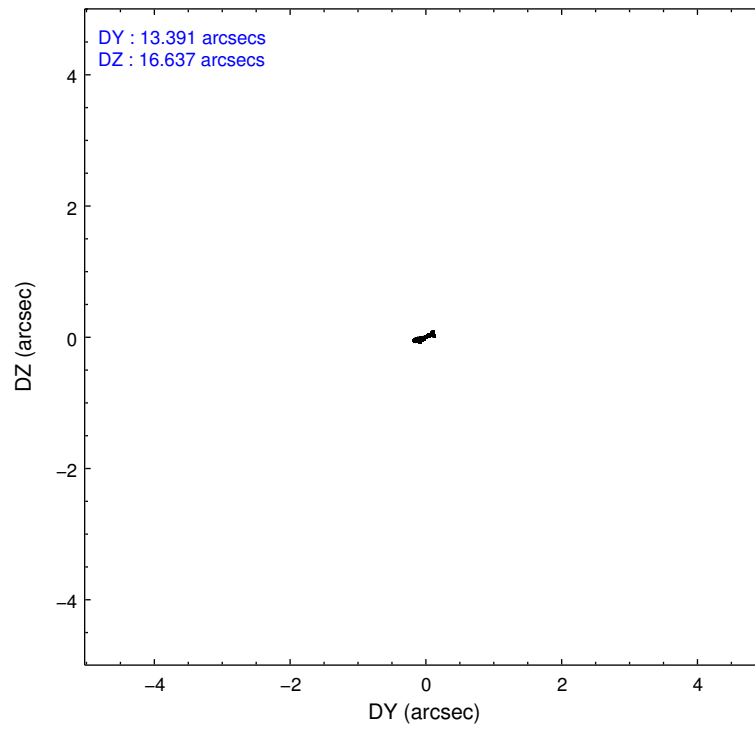
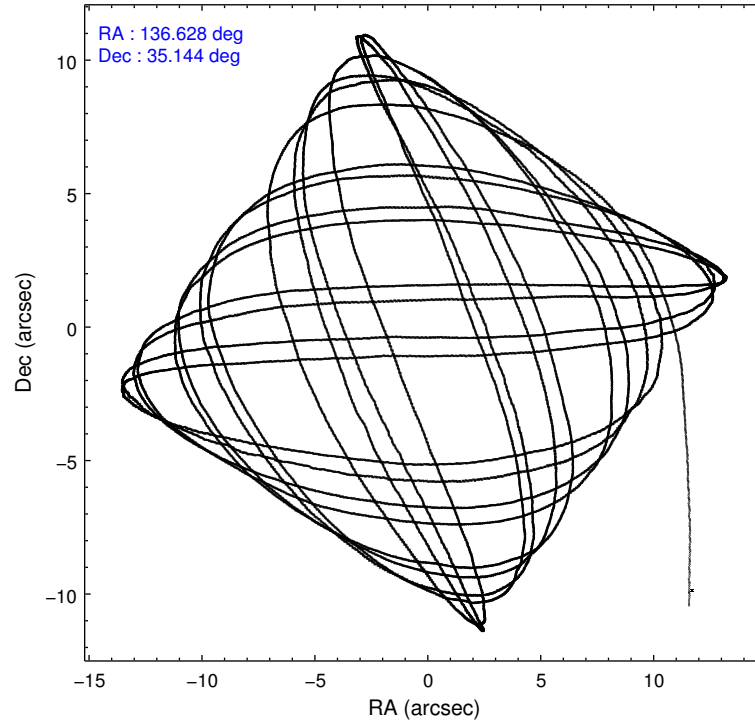
	ccd 3	ccd 5	ccd 6	ccd 7	ccd 8
level 1 events	77184	104883	78140	77147	98822
rejected events	70045	49275	69957	39741	74317
rejected %	90%	46%	89%	51%	75%

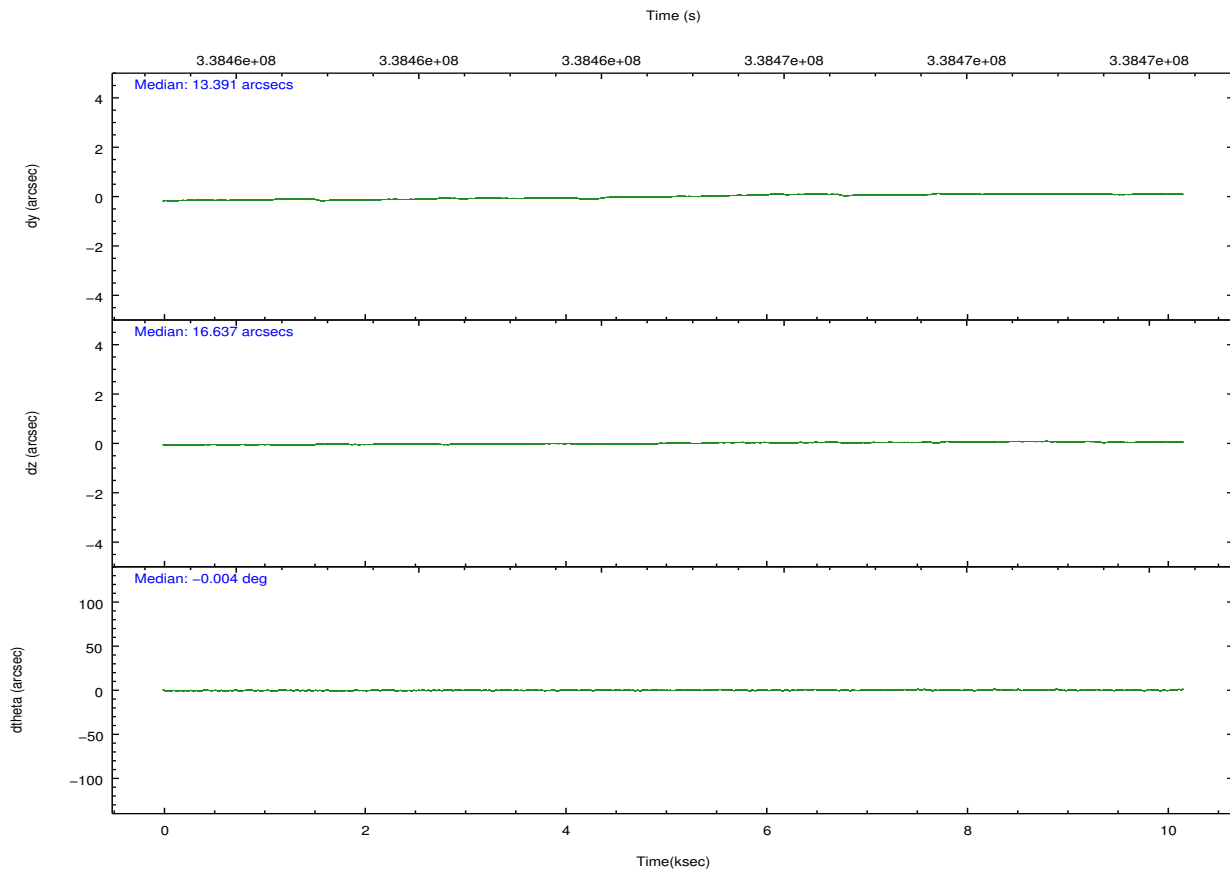
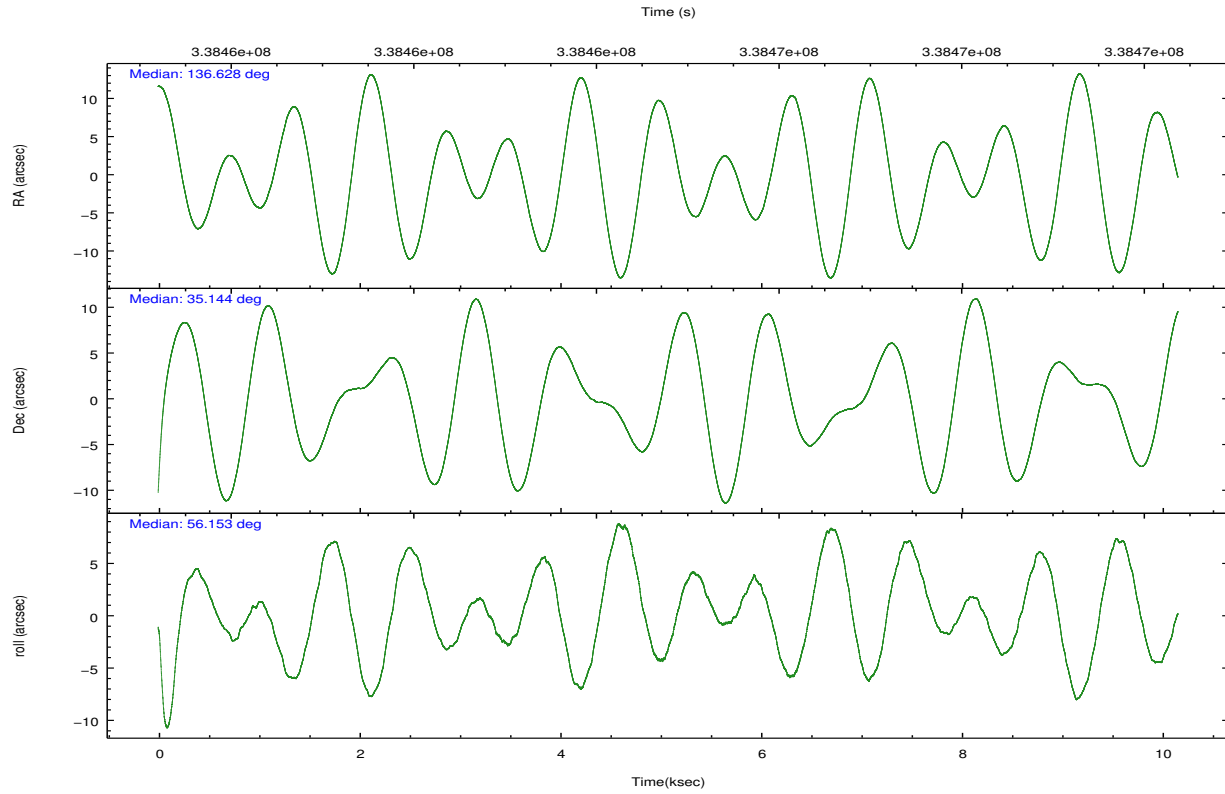
	ccd 3	ccd 5	ccd 6	ccd 7	ccd 8
grade 0 events	2679	8092	3003	3934	6929
	3%	7%	3%	5%	7%
grade 1 events	34	337	36	120	92
	0%	0%	0%	0%	0%
grade 2 events	1544	16791	1876	8051	5927
	2%	16%	2%	10%	5%
grade 3 events	846	2190	913	3558	2750
	1%	2%	1%	4%	2%
grade 4 events	768	2205	850	3472	2446
	0%	2%	1%	4%	2%
grade 5 events	2795	8209	2805	8205	4102
	3%	7%	3%	10%	4%
grade 6 events	1371	26950	1644	18812	6715
	1%	25%	2%	24%	6%
grade 7 events	67147	40109	67013	30995	69861
	86%	38%	85%	40%	70%

## 2.2 Compared Parameters

Parameter	Planned	Actual	Parameter	Planned	Actual
Instrument	ACIS	ACIS	Obspar format version number	7	7
Detector	ACIS-35678	ACIS-35678	Obspar file type	PREDICTED	ACTUAL
Grating	NONE	NONE	Obspar update status	NONE	UPDATED
Data mode	VFAINT	VFAINT	CCD I0 on	N	N
Observation mode	POINTING	POINTING	CCD I1 on	N	N
[deg] Pointing RA	136.626349	136.6281786841682	CCD I2 on	O1	N
[deg] Pointing Dec	35.116401	35.14371359526105	CCD I3 on	O2	Y
[deg] Pointing Roll	56.000902	56.15648588573621	CCD S0 on	N	N
[mm] SIM focus pos	-0.684267	-0.6828225247311905	CCD S1 on	Y	Y
[mm] SIM defocus	0	0.001444936568705701	CCD S2 on	Y	Y
[mm] SIM translation stage pos	-190.132523	-190.1425803651734	CCD S3 on	Y	Y
[mm] SIM translation stage offset	0	0.01005778216563158	CCD S4 on	Y	Y
[s] Observation start time (MET)	338459859.184000	338458814.56859	CCD S5 on	N	N
Observation start date	2008-09-22T08:36:34	2008-09-22T08:20:14	Number of optional ACIS chips dropped	1	1
[s] Observation end time (MET)	338469859.184000	338471365.69421	On-chip summing requested	N	N
Observation end date	2008-09-22T11:23:14	2008-09-22T11:49:25	Subarray requested	NONE	NONE
Read mode	TIMED	TIMED	Alternating exposures requested	N	N
			[s] Primary exposure time	0.000000	3.1

## 2.3 Aspect



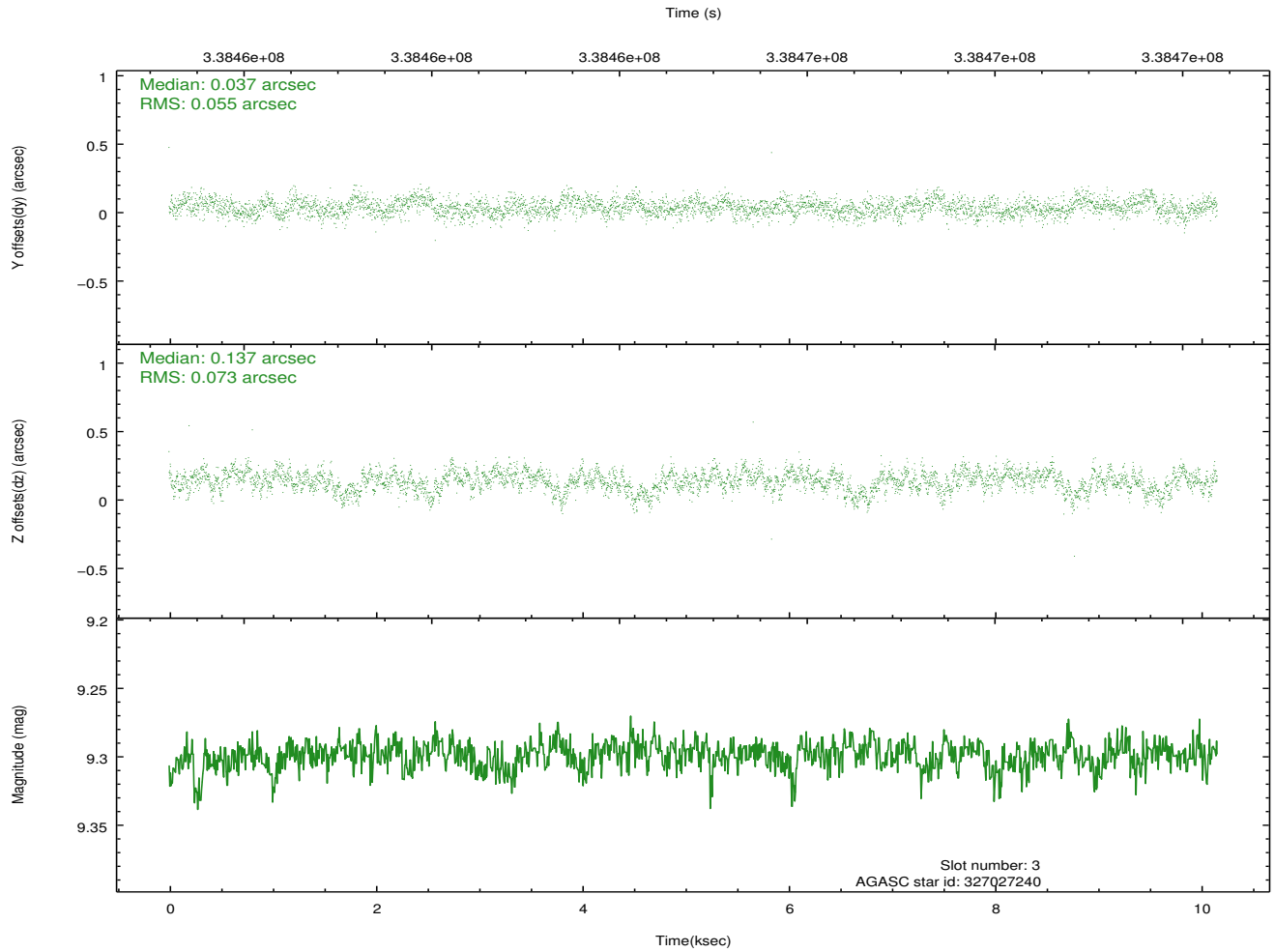
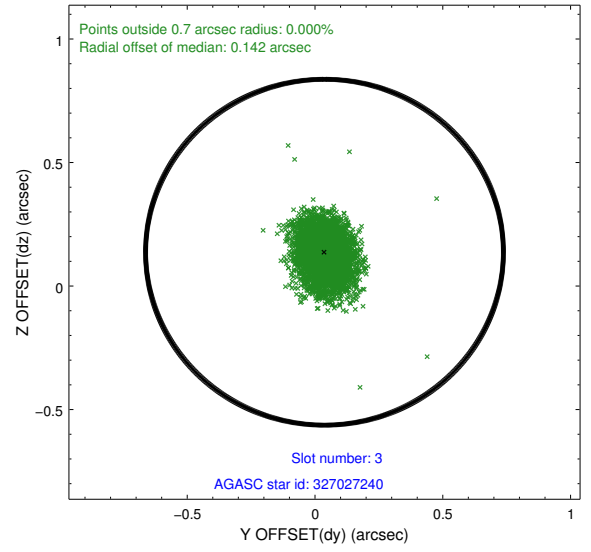
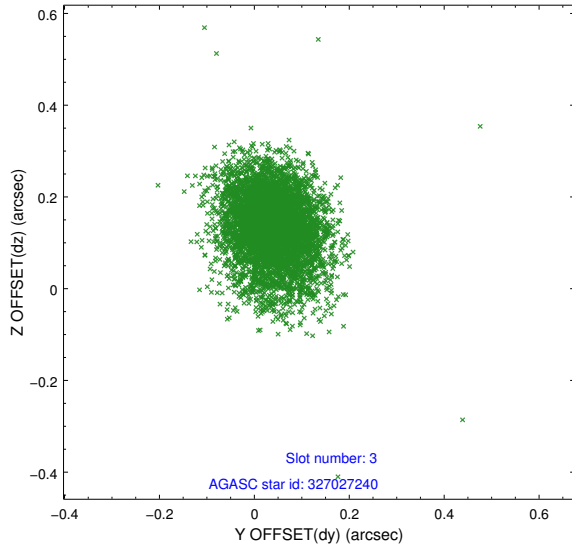


### Slot Statistics

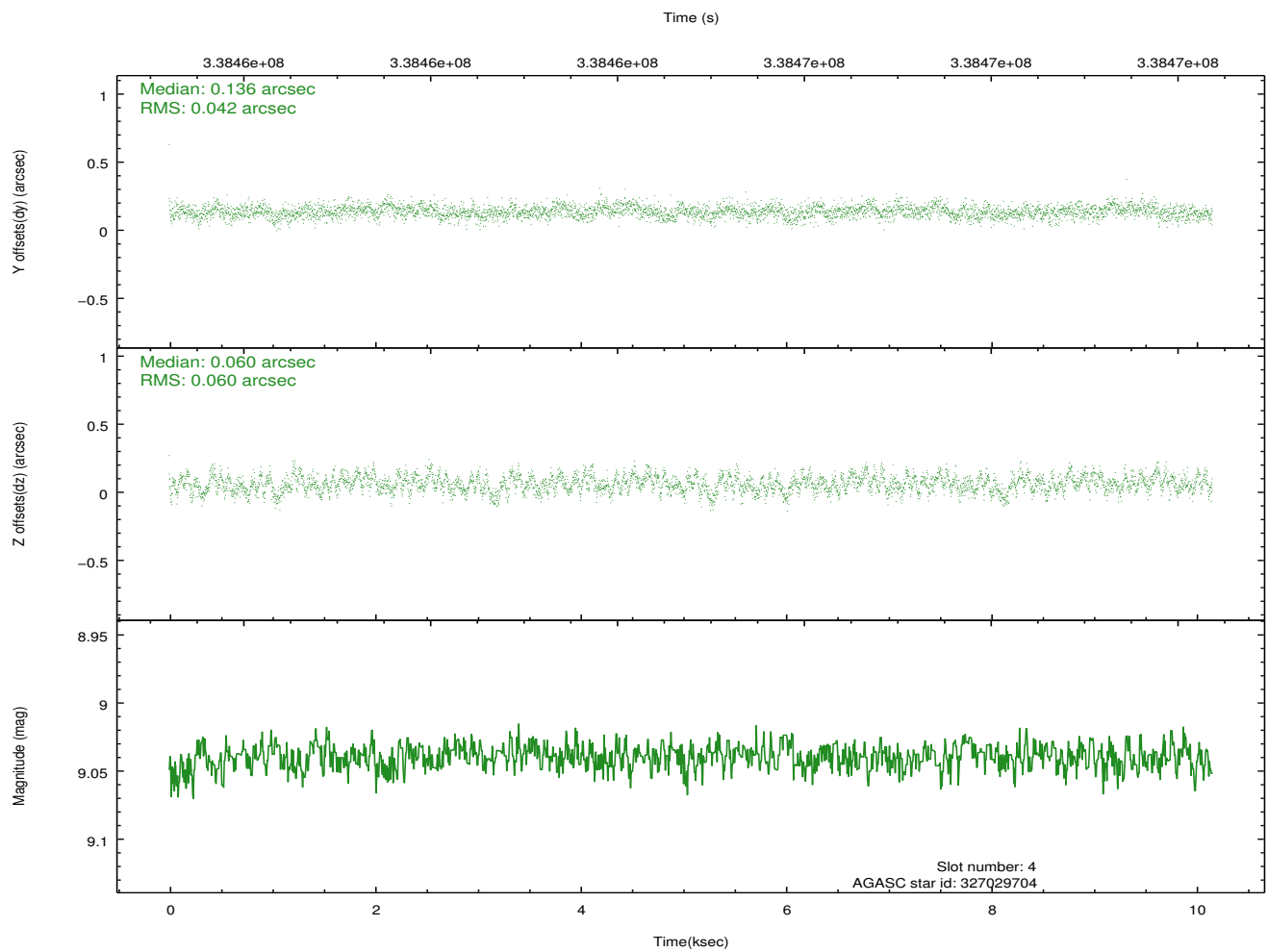
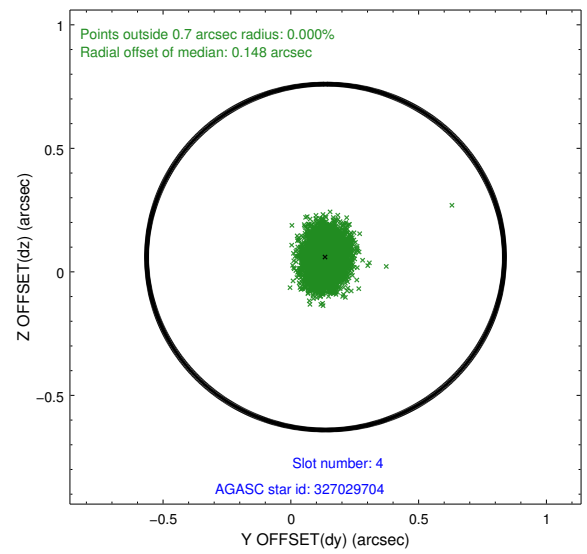
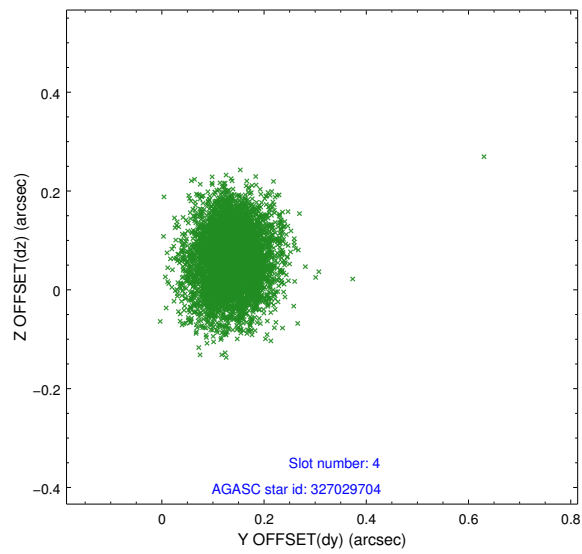
slot	status	id	mag	n_pts	med_dy	med_dz	dr1	dr2	ra	dec	mean_y	mean_z
0	FID	ACIS-S-2	6.88	2478	-0.025	-0.008	0.007	0.011	0.000000	0.000000	-766.35	-1738.02
1	FID	ACIS-S-4	6.96	2478	0.144	0.014	0.006	0.012	0.000000	0.000000	2146.88	169.92
2	FID	ACIS-S-5	6.99	2479	-0.150	0.003	0.007	0.012	0.000000	0.000000	-1818.63	164.21
3	GUIDE	327027240	9.30	4949	0.037	0.137	0.093	0.161	136.433809	34.766793	-1361.11	-231.15
4	GUIDE	327029704	9.04	4954	0.136	0.060	0.077	0.128	136.726389	34.530128	-1583.61	-1425.99
5	GUIDE	327429464	7.99	4957	-0.203	0.064	0.059	0.098	137.175363	35.362228	1638.41	-838.86
6	GUIDE	327429448	8.91	4956	0.073	-0.250	0.077	0.126	136.062314	35.010317	-1242.33	1167.58
7	GUIDE	327426832	8.29	4951	-0.040	-0.008	0.080	0.133	137.535680	35.412785	2386.33	-1607.72

## 2.4 Star Slots

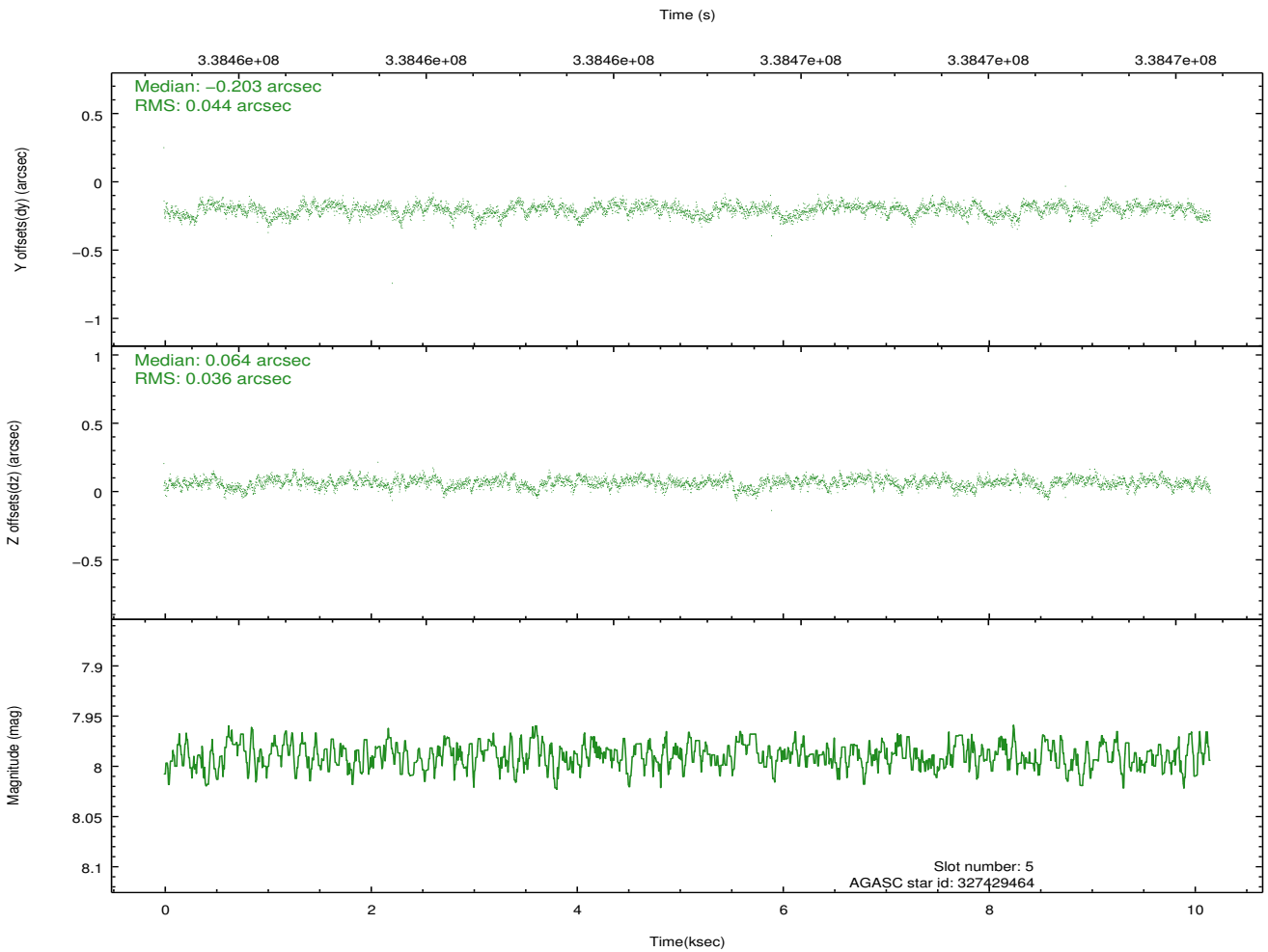
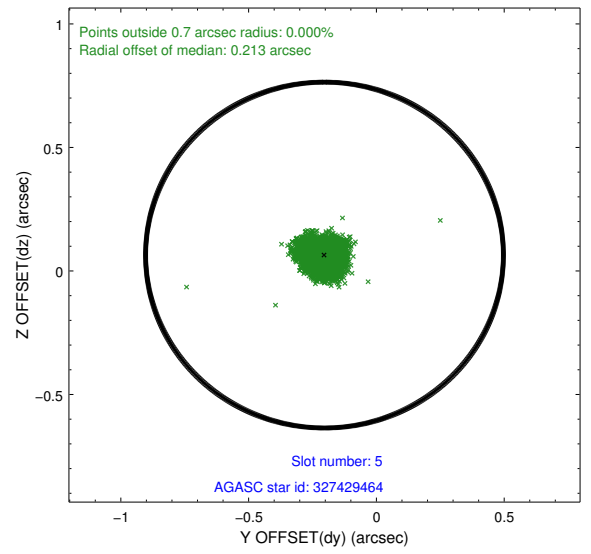
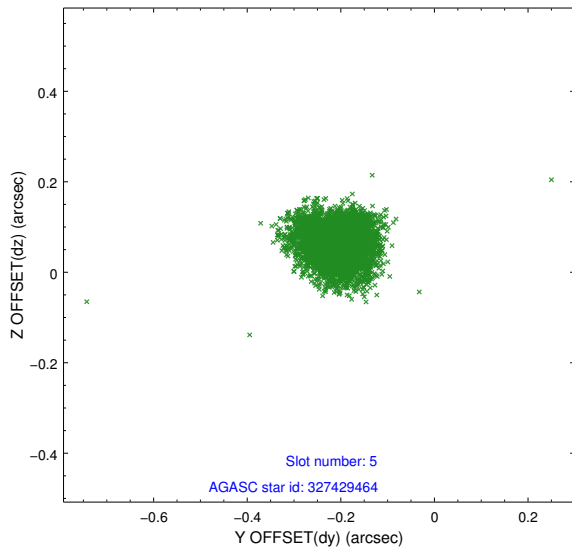
### 2.4.1 Slot 3



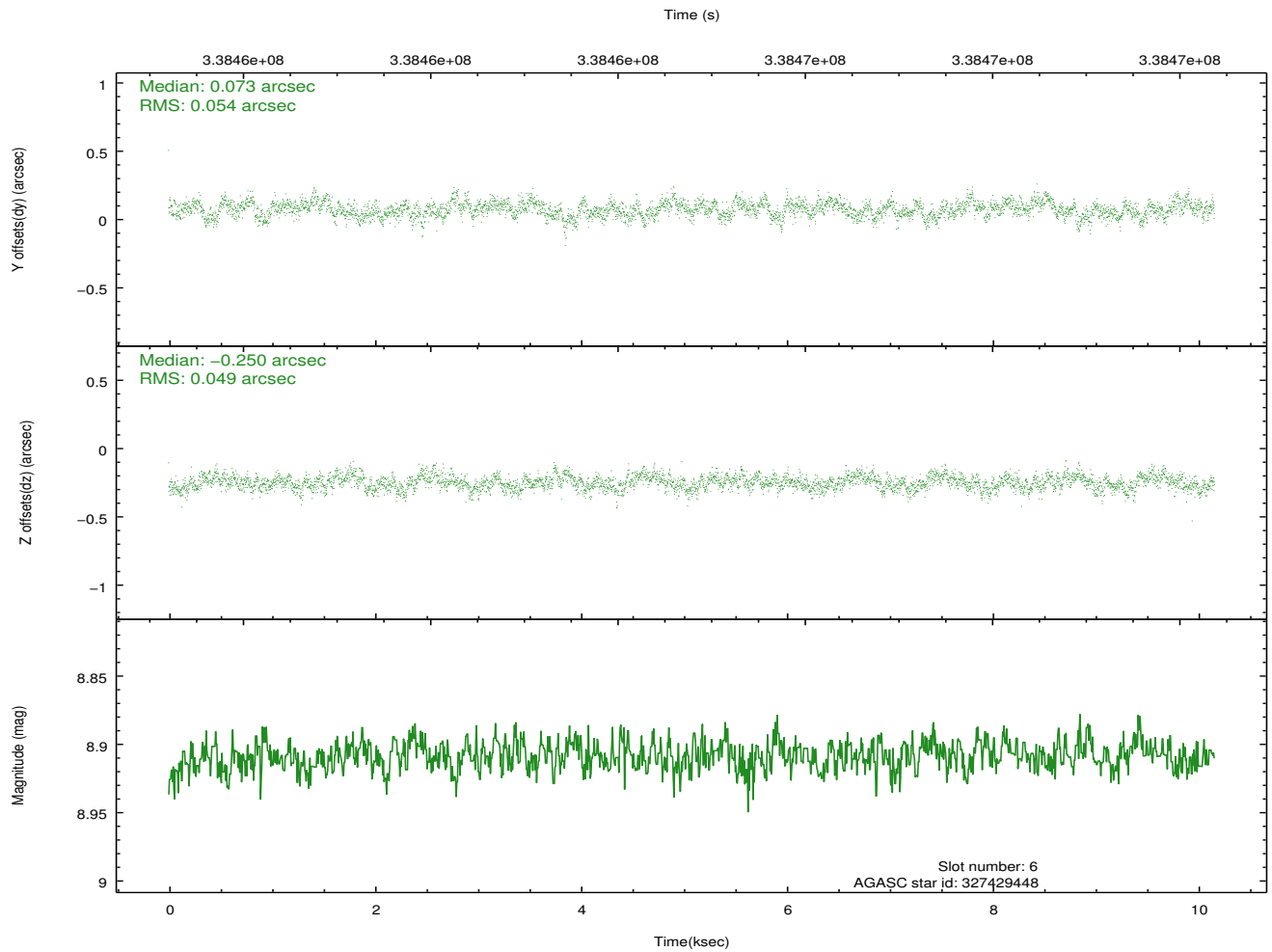
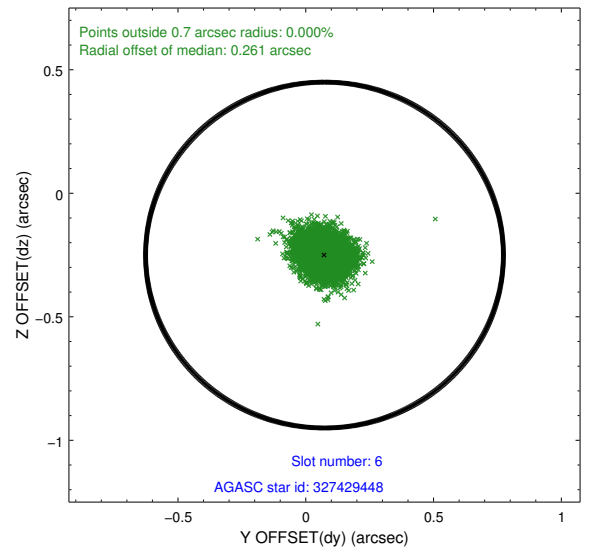
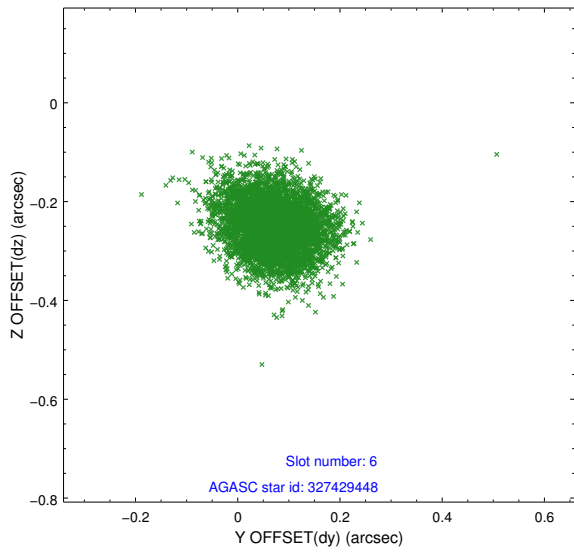
## 2.4.2 Slot 4



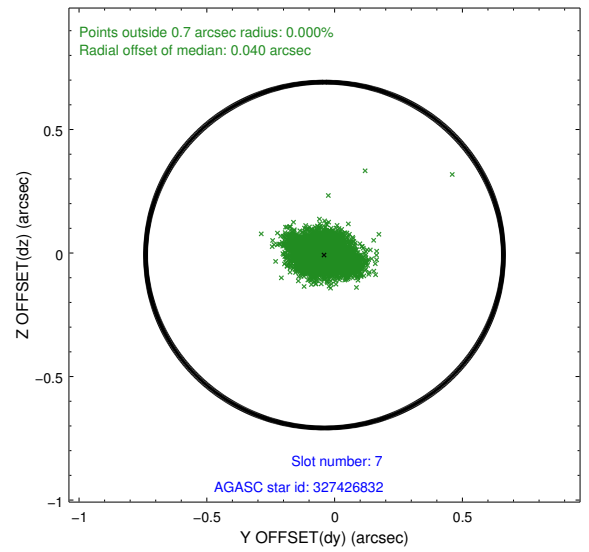
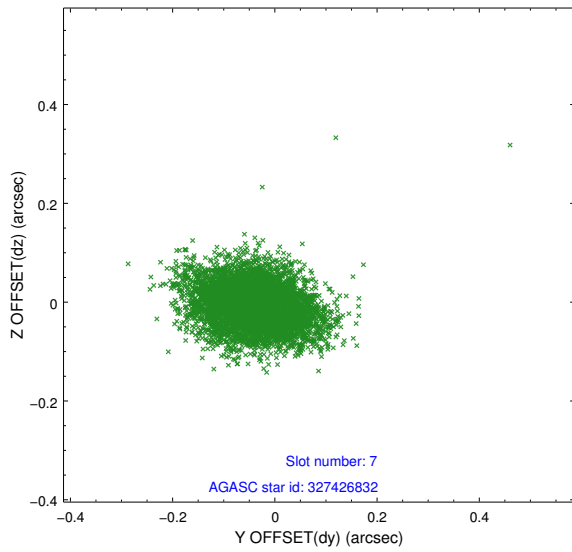
### 2.4.3 Slot 5



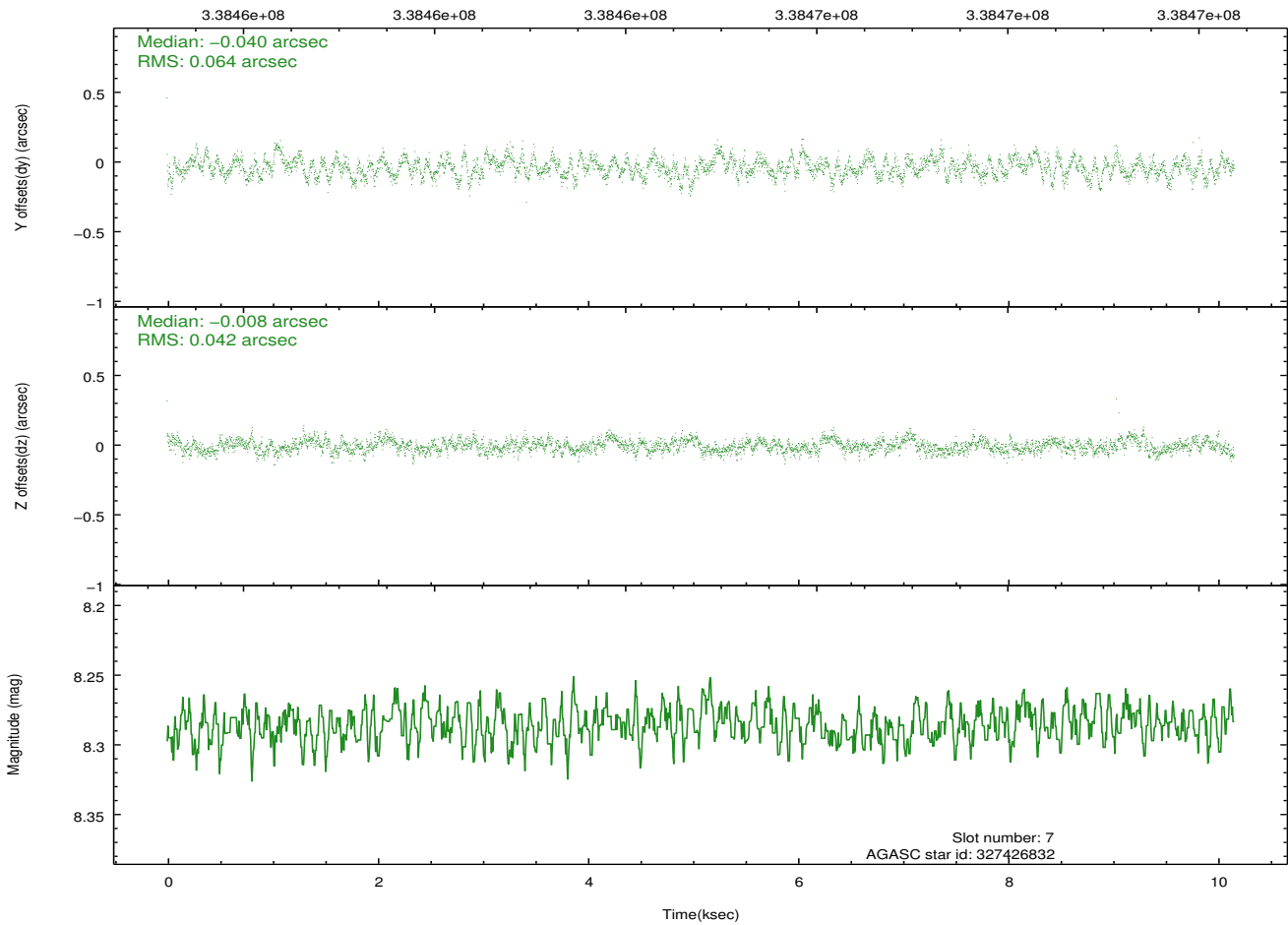
### 2.4.4 Slot 6



## 2.4.5 Slot 7

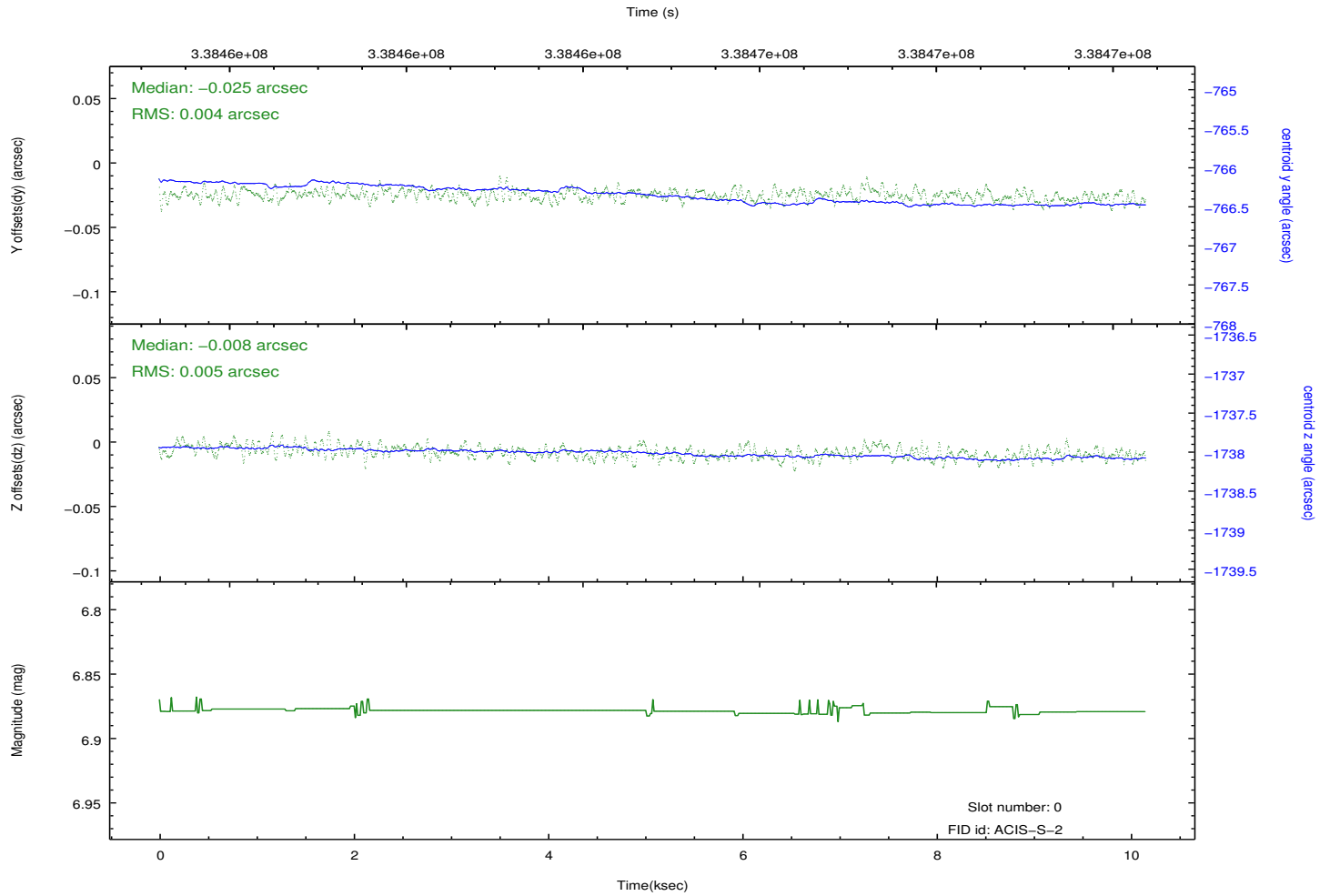
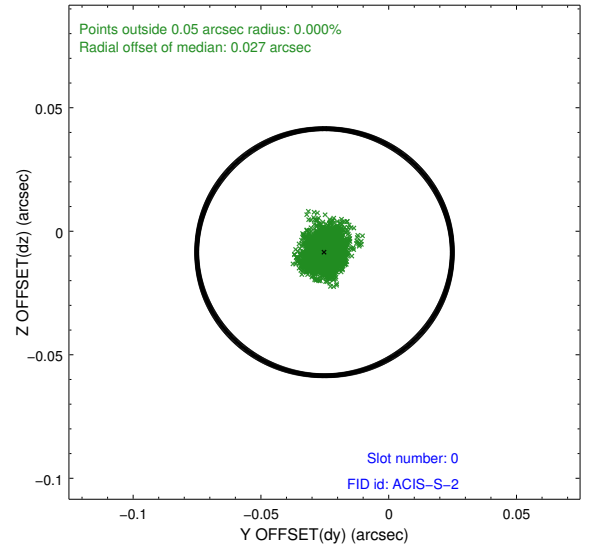
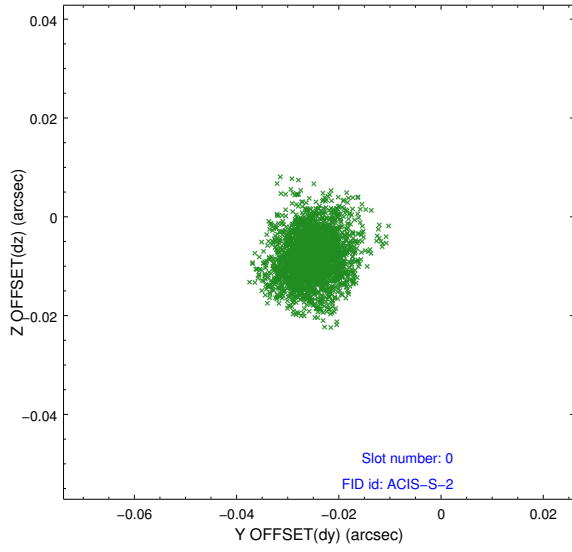


Time (s)

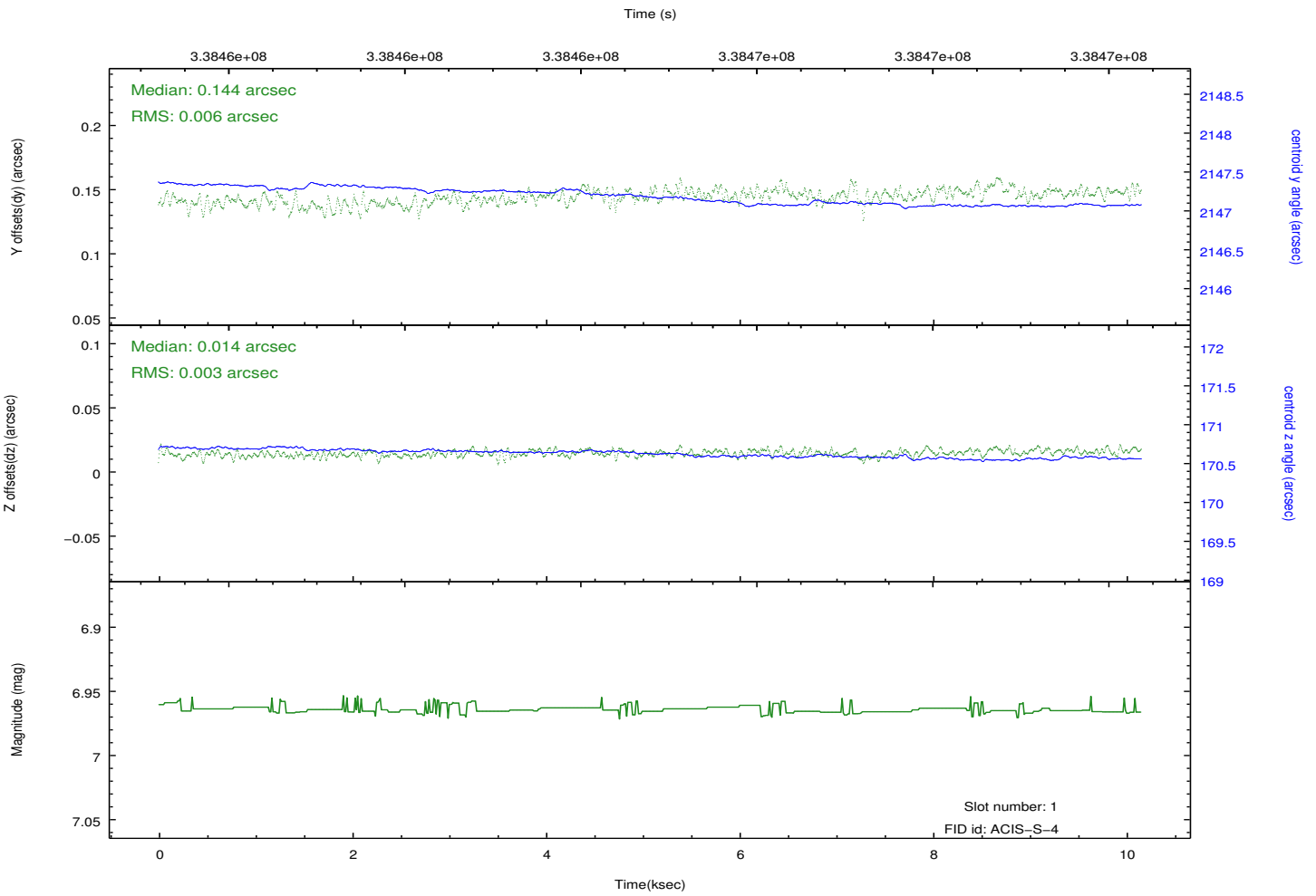
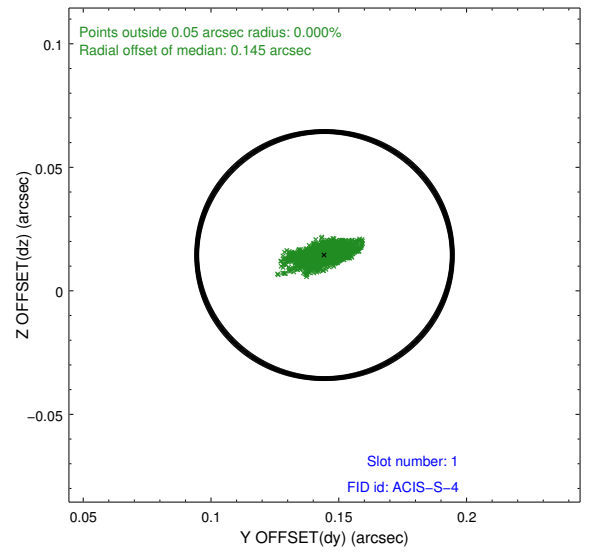
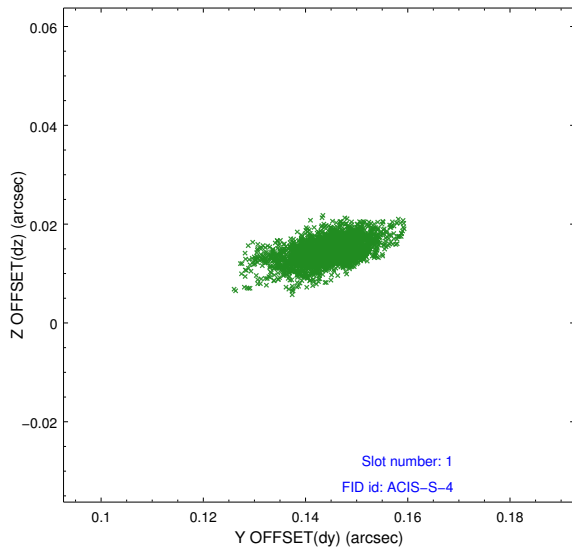


## 2.5 FID Slots

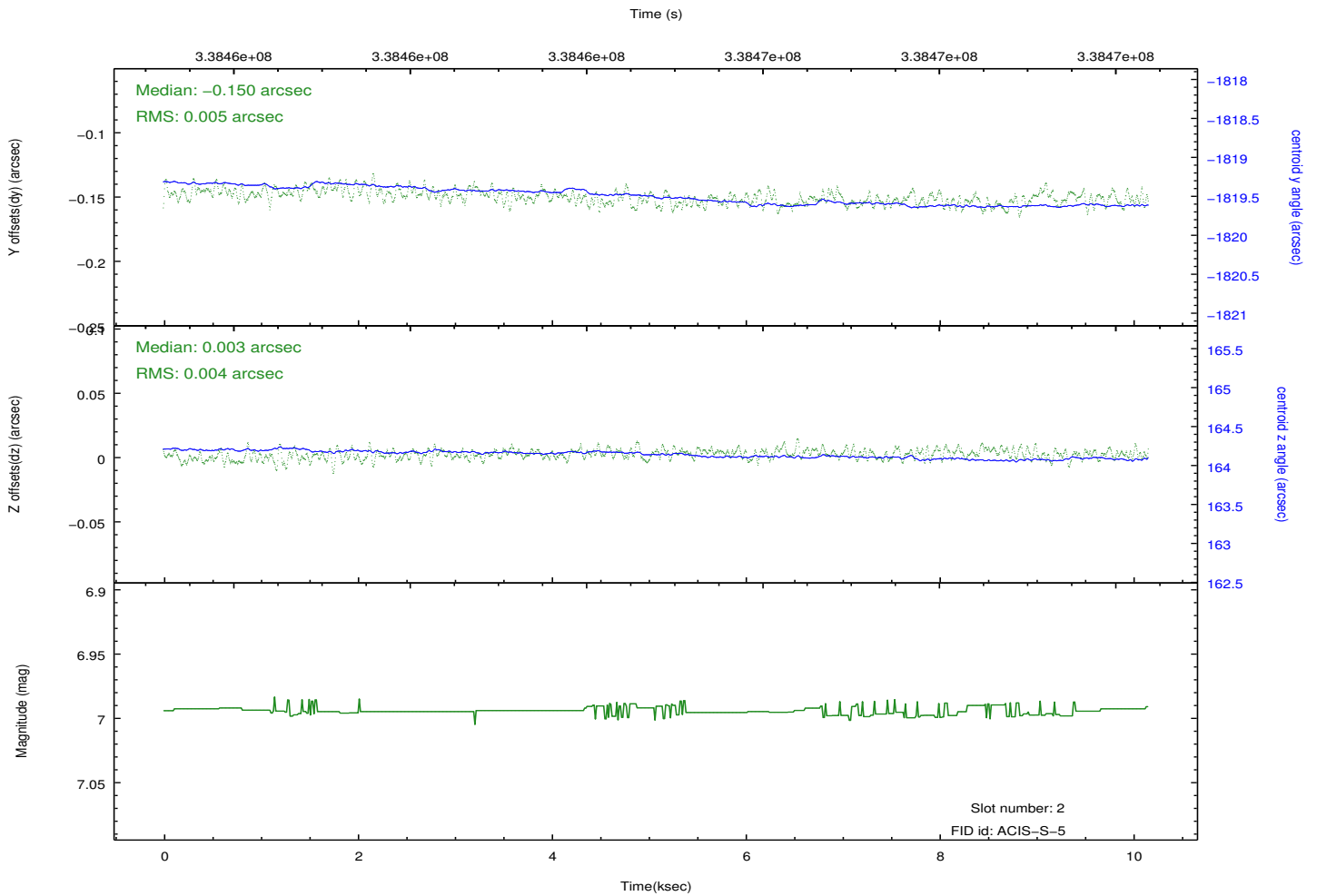
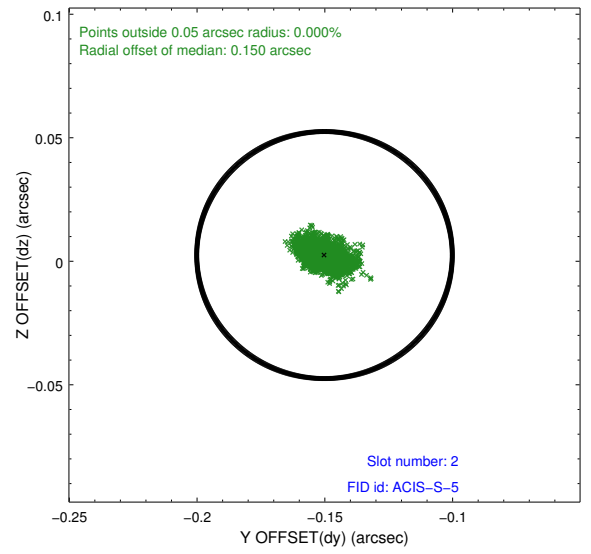
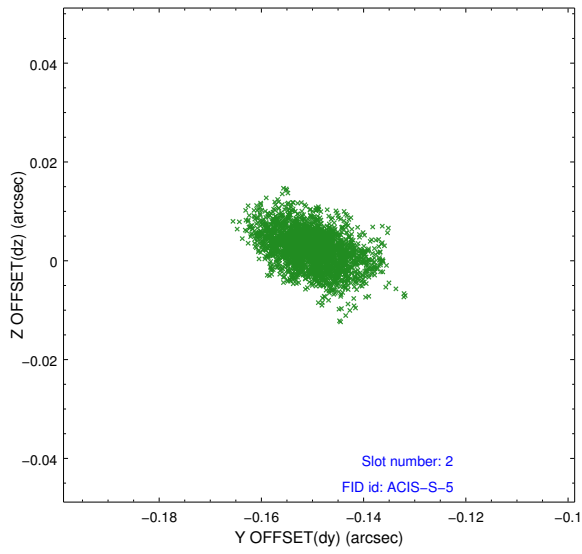
### 2.5.1 Slot 0



## 2.5.2 Slot 1



### 2.5.3 Slot 2



# A Summary

## A.1 Status

V&V Scientist	Beth Sundheim
V&V Date (YYYY-MM-DD)	2012.05.30
V&V Edition	1
V&V Disposition and Status	OK
V&V Charge Time	10.1525

## A.2 Comments