

# V&V Reference Report

## L2 ASCDS Version : 8.4.5

Observation 11093 - L2 Version 2  
Chandra X-Ray Center

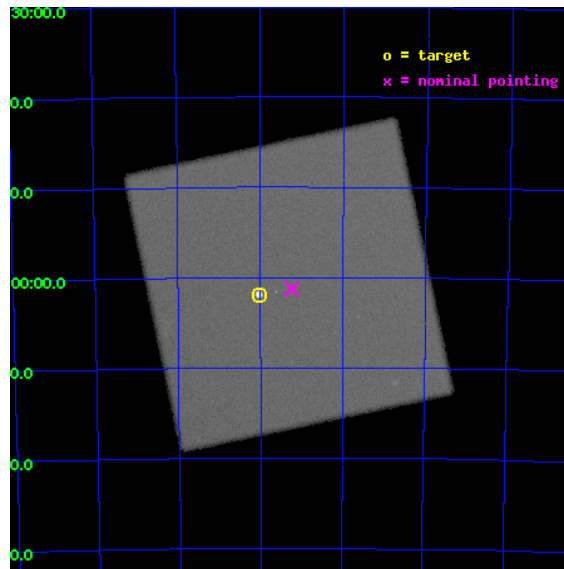
L2 Processing Date : Jun 27 2012

## Contents

<b>1</b>	<b>Front</b>	<b>2</b>
<b>2</b>	<b>OBI</b>	<b>3</b>
2.1	OBI . . . . .	3
2.1.1	Images . . . . .	3
2.1.2	Parameters . . . . .	4
2.1.3	Events . . . . .	4
2.2	Compared Parameters . . . . .	5
2.3	Aspect . . . . .	6
2.4	Star Slots . . . . .	9
2.4.1	Slot 3 . . . . .	9
2.4.2	Slot 4 . . . . .	10
2.4.3	Slot 5 . . . . .	11
2.4.4	Slot 6 . . . . .	12
2.4.5	Slot 7 . . . . .	13
2.5	FID Slots . . . . .	14
2.5.1	Slot 0 . . . . .	14
2.5.2	Slot 1 . . . . .	15
2.5.3	Slot 2 . . . . .	16
<b>A</b>	<b>Summary</b>	<b>17</b>
A.1	Status . . . . .	17
A.2	Comments . . . . .	17

# 1 Front

seq_num	501183	Sequence number
obs_id	11093	Observation id
title	A Direct X-Ray Expansion Measurement of the SMC SNR 1E 0102.2--7219	&#160
observer	Dr. Robert Petre	Principal investigator
object	1E 0102.2-7219	Source name
ra_targ	16.01	Observer's specified target RA [deg]
dec_targ	-72.032028	Observer's specified target Dec [deg]
ra_nom	15.809297290902	Nominal RA [deg]
dec_nom	-72.020920581486	Nominal Dec [deg]
roll_nom	213.09682919542	Nominal Roll [deg]
revision	2	Processing version of data
ontime	20165.082272887	[s]
livetime	19924.971523653	Ontime multiplied by DTCOR
l2events	1560288	Number of level 2 events

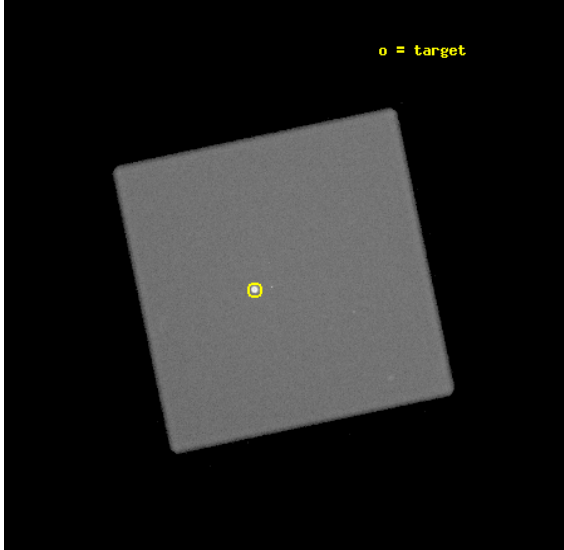


## 2 OBI

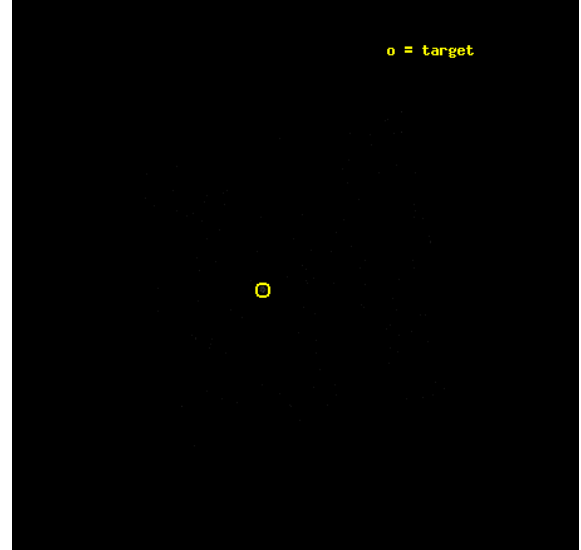
### 2.1 OBI

#### 2.1.1 Images

Level 1 Image



Level 1 Bad Events



### 2.1.2 Parameters

obi_num	0	Obi number	sched_exp_time	20000.000000	[s] Scheduled observation exposure time
ascdsver	8.4.5	Processing system revision	ontime	20165.082272887	[s]
caldbver	4.5.0	&#160	l1events	2318336	Number of level 1 events
date	2012-06-27T17:31:40	Date and time of file creation			
revision	2	Processing version of data			

### 2.1.3 Events

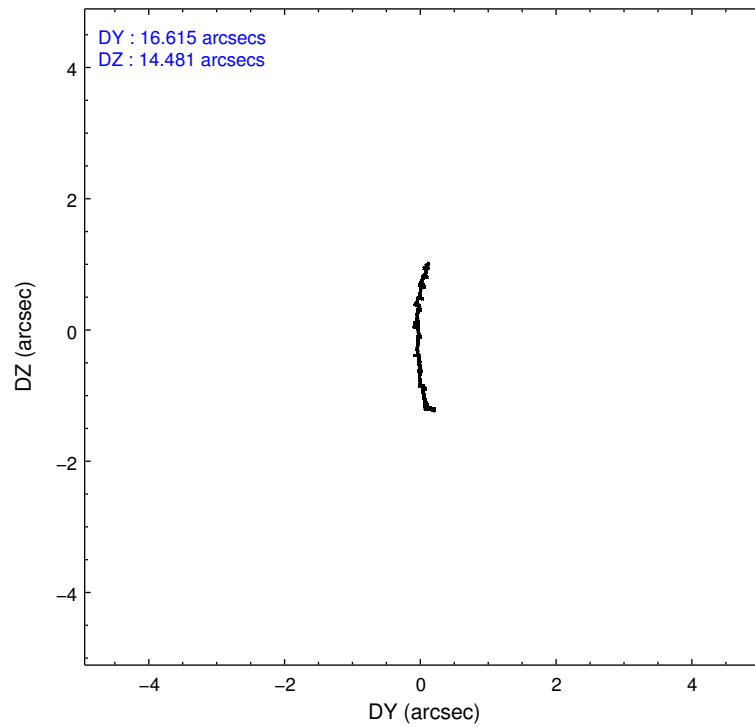
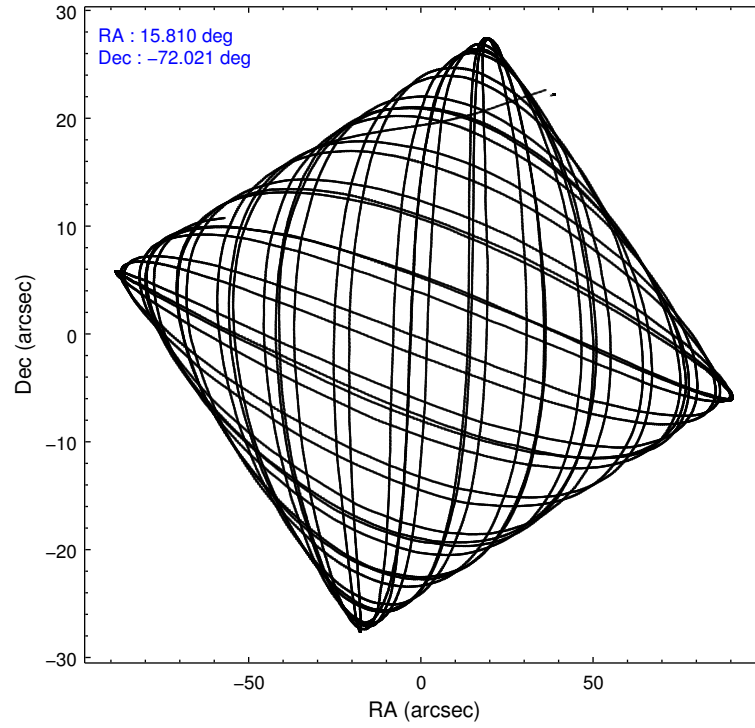
#### Level 1 Events

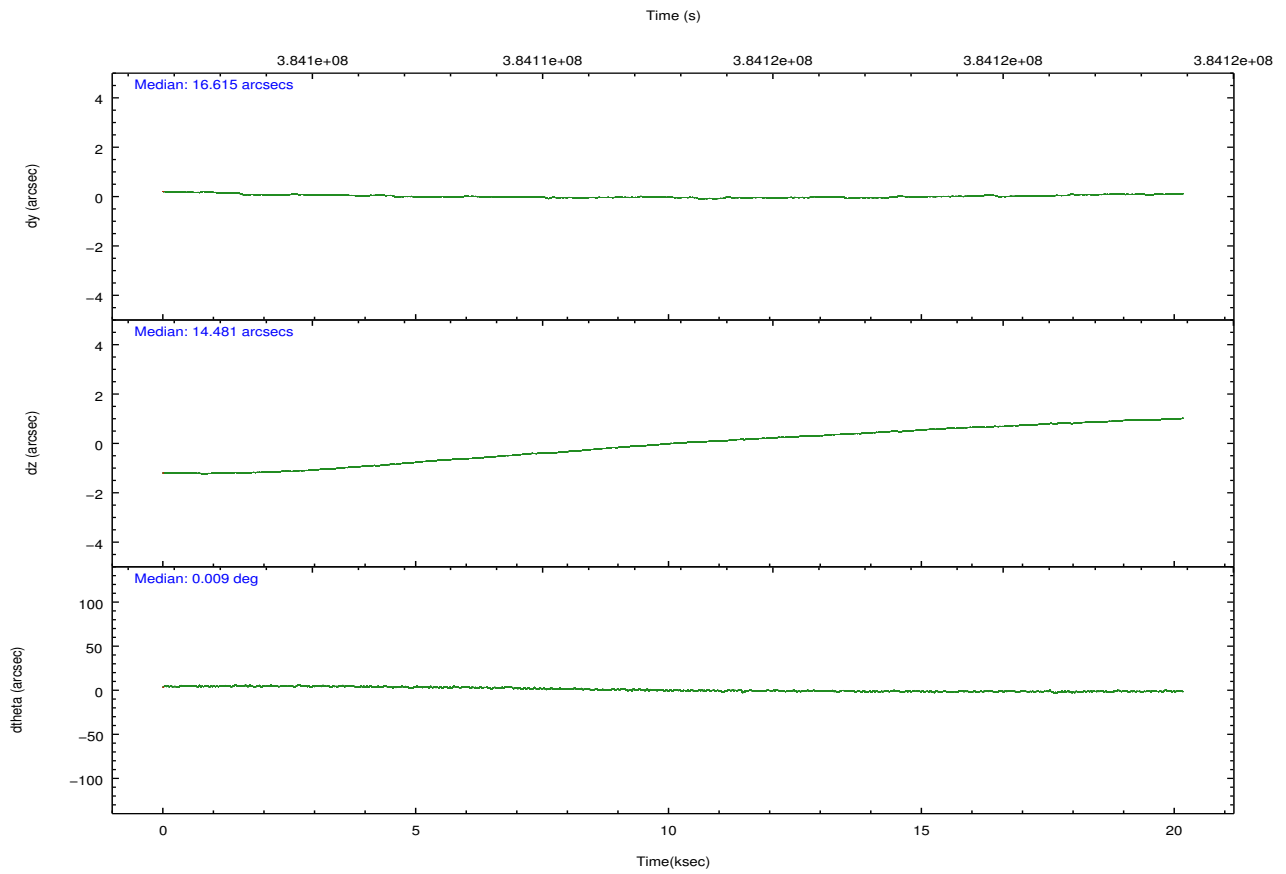
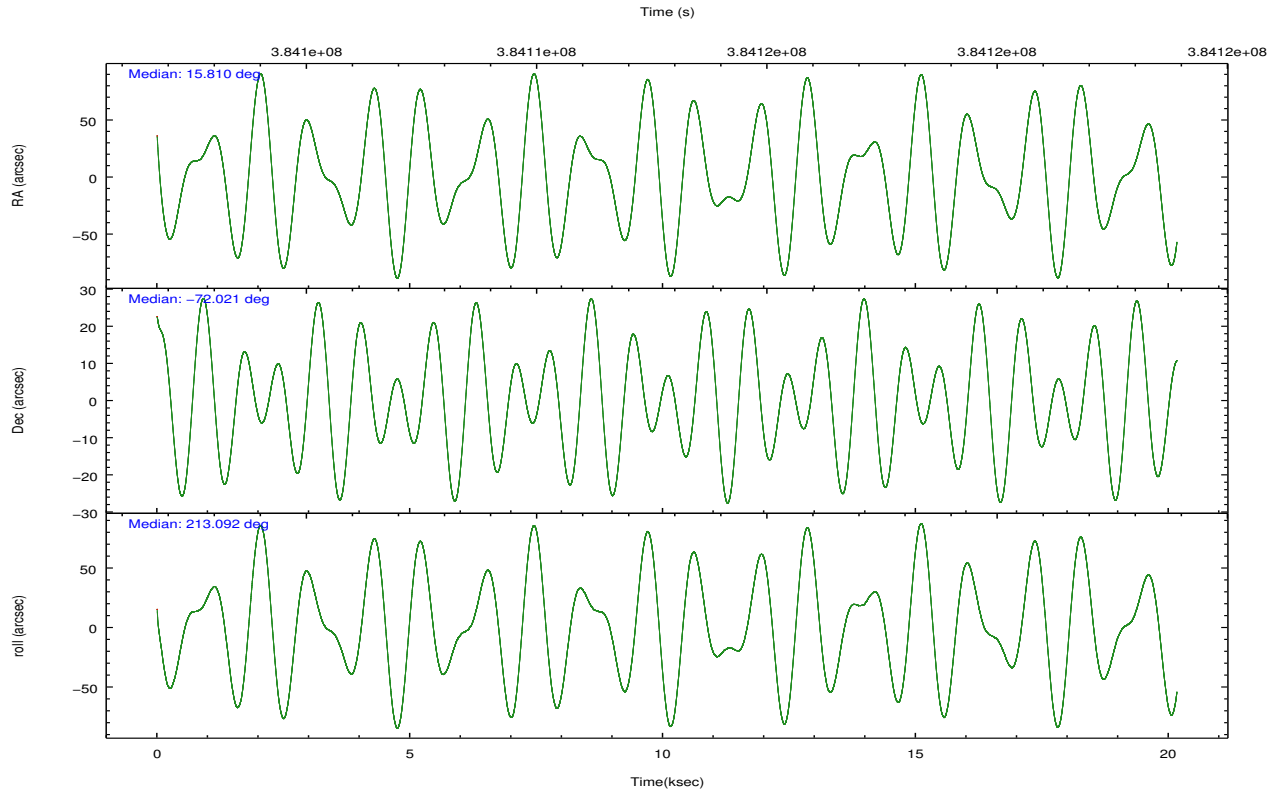
	<b>segment 0</b>
level 1 events	2318336
rejected events	99460
rejected %	4%

## 2.2 Compared Parameters

Parameter	Planned	Actual	Parameter	Planned	Actual
Instrument	HRC	HRC	Obspar format version number	7	7
Detector	HRC-I	HRC-I	Obspar file type	PREDICTED	ACTUAL
Grating	NONE	NONE	Obspar update status	NONE	UPDATED
Data mode	OBSERVING	OBSERVING			
Observation mode	POINTING	POINTING			
[deg] Pointing RA	15.847606	15.80929729090249			
[deg] Pointing Dec	-71.996381	-72.02092058148553			
[deg] Pointing Roll	213.228767	213.0968291954204			
[mm] SIM focus pos	-1.040293	-1.038866356238299			
[mm] SIM defocus	0	0.001426264420575141			
[mm] SIM translation stage pos	126.985494	126.9829799899862			
[mm] SIM translation stage offset	0	0.002508901615314585			
[s] Observation start time (MET)	384102926.184000	384101863.38573			
Observation start date	2010-03-04T15:14:20	2010-03-04T14:57:43			
[s] Observation end time (MET)	384122926.184000	384123290.49932			
Observation end date	2010-03-04T20:47:40	2010-03-04T20:54:50			

## 2.3 Aspect



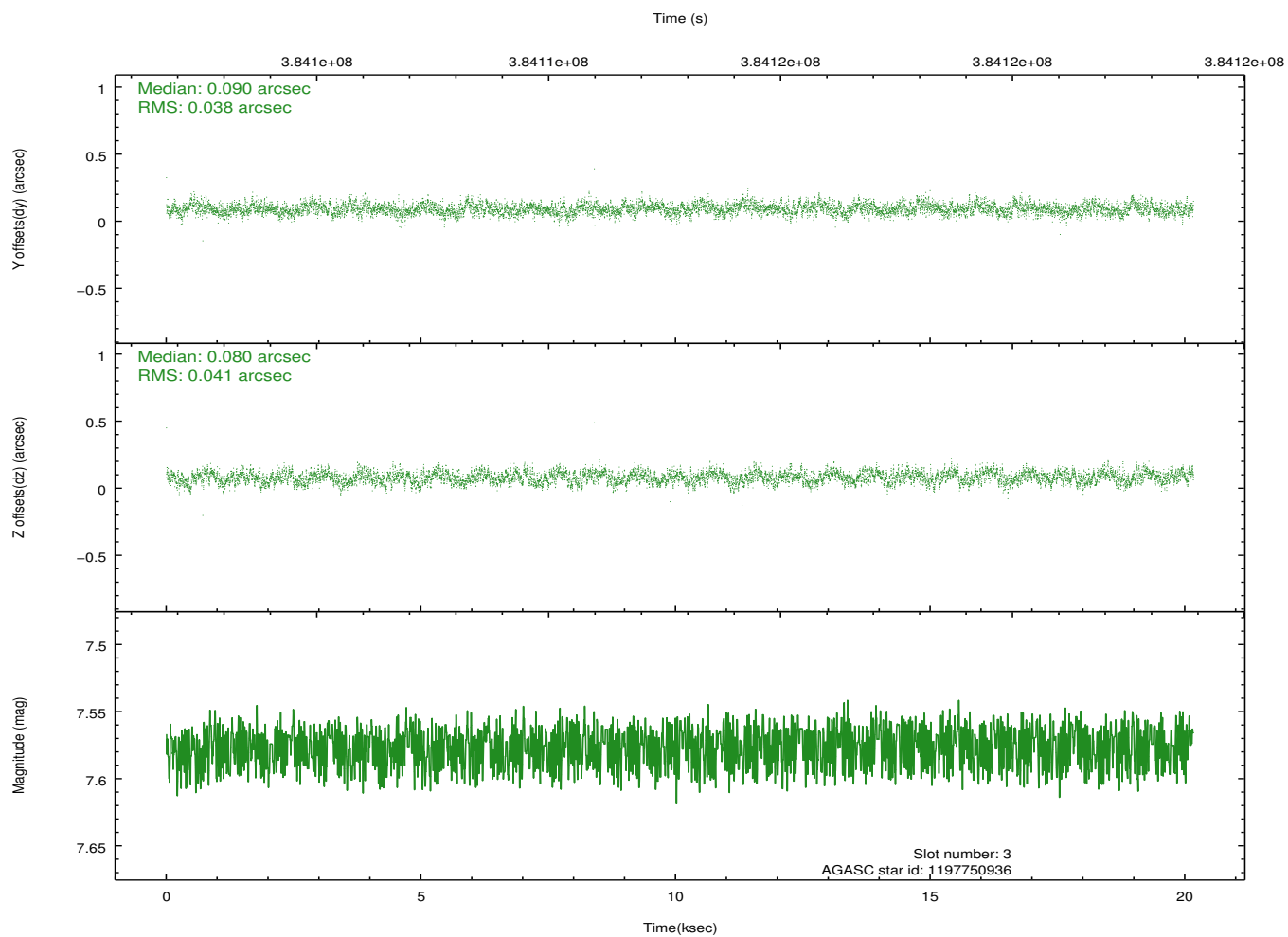
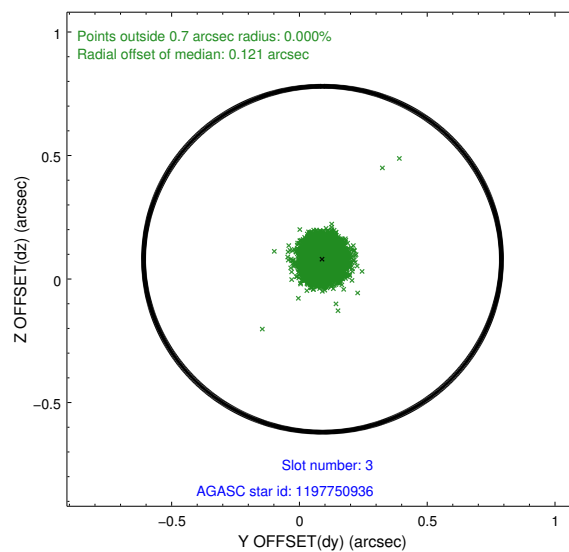
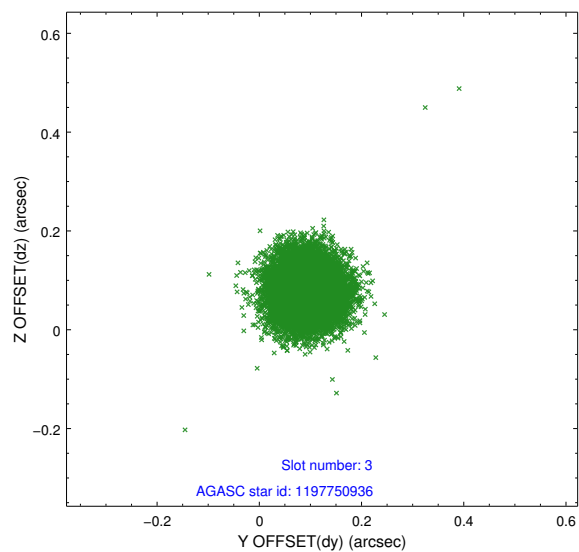


### Slot Statistics

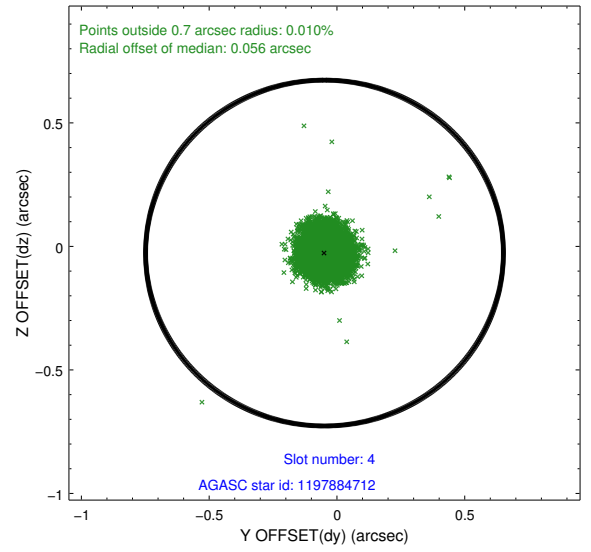
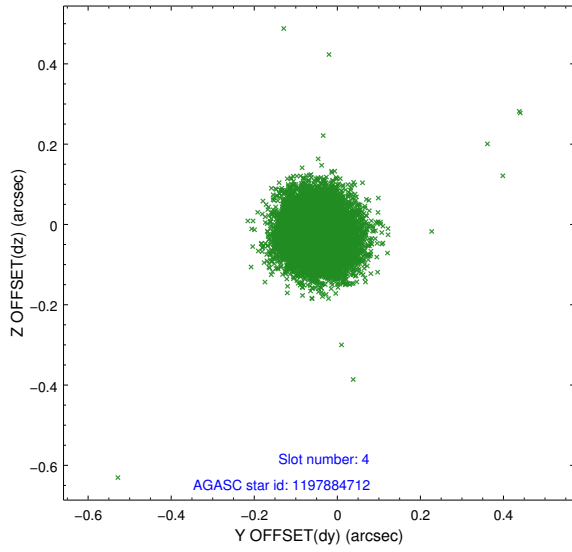
slot	status	id	mag	n_pts	med_dy	med_dz	dr1	dr2	ra	dec	mean_y	mean_z
0	FID	HRC-I-1	6.99	4919	-0.095	0.004	0.019	0.028	0.000000	0.000000	-772.58	-1302.44
1	FID	HRC-I-2	7.02	4919	0.227	-0.095	0.027	0.061	0.000000	0.000000	840.22	-1304.39
2	FID	HRC-I-3	7.08	4919	-0.011	0.006	0.020	0.051	0.000000	0.000000	-1200.81	1001.87
3	GUIDE	1197750936	7.58	9830	0.090	0.080	0.060	0.094	15.387940	-71.549550	-441.81	-1630.13
4	GUIDE	1197884712	8.29	9828	-0.049	-0.027	0.073	0.117	16.087398	-72.252690	285.76	916.68
5	GUIDE	1197885328	7.25	9835	0.076	0.212	0.075	0.121	16.283090	-71.733943	-928.65	-518.85
6	GUIDE	1197884536	8.50	9832	-0.001	-0.094	0.075	0.120	17.160729	-71.835289	-1541.65	335.85
7	GUIDE	1198189696	7.35	9836	-0.124	-0.176	0.070	0.113	15.223750	-72.697522	1943.46	1748.84

## 2.4 Star Slots

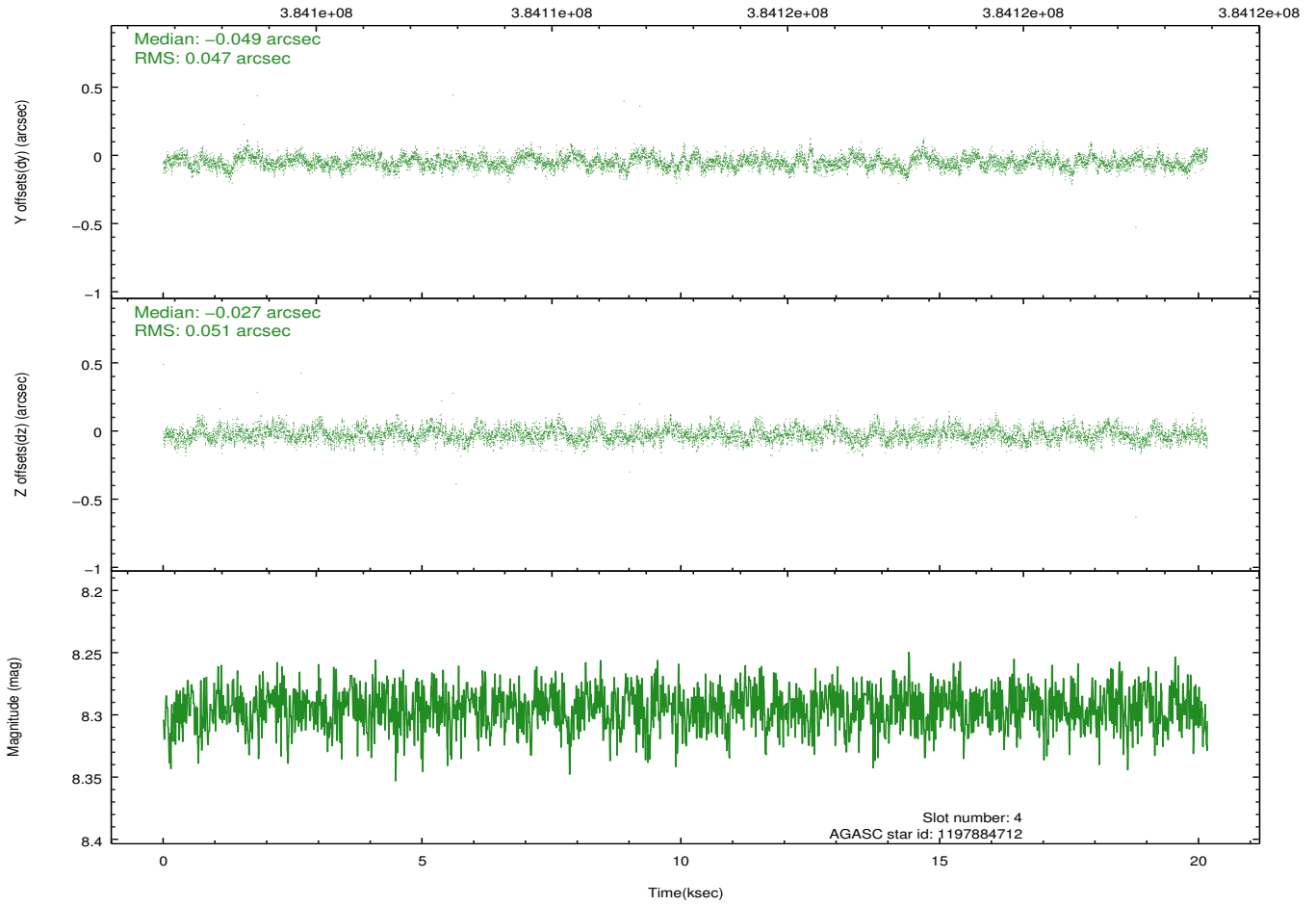
### 2.4.1 Slot 3



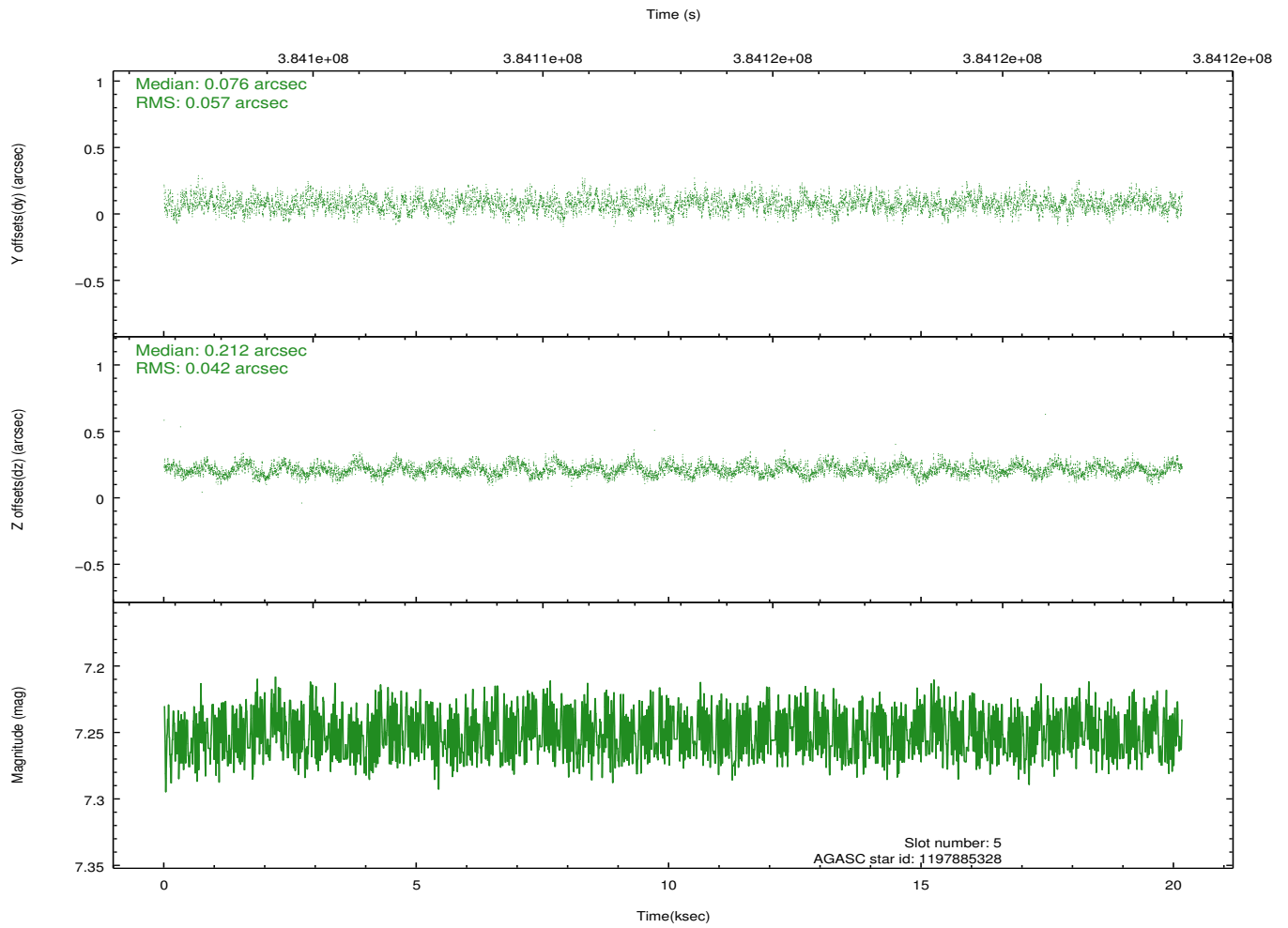
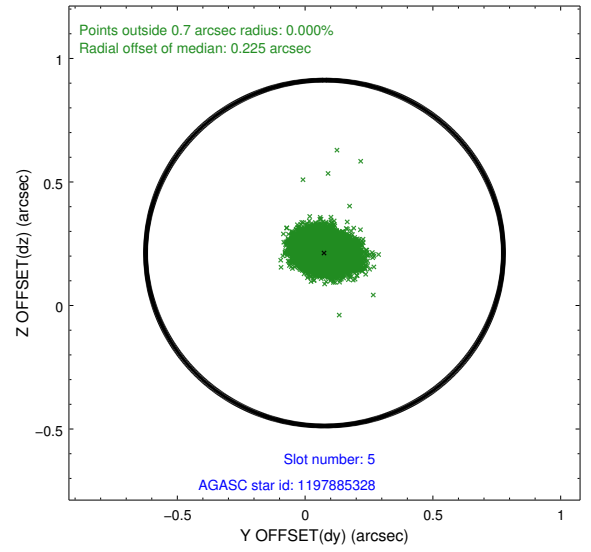
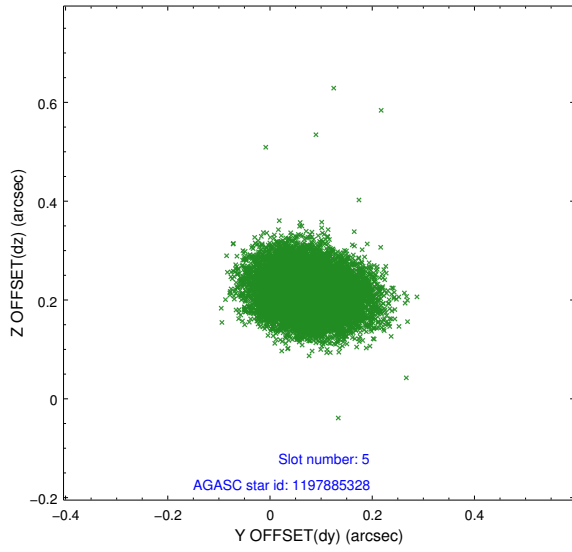
### 2.4.2 Slot 4



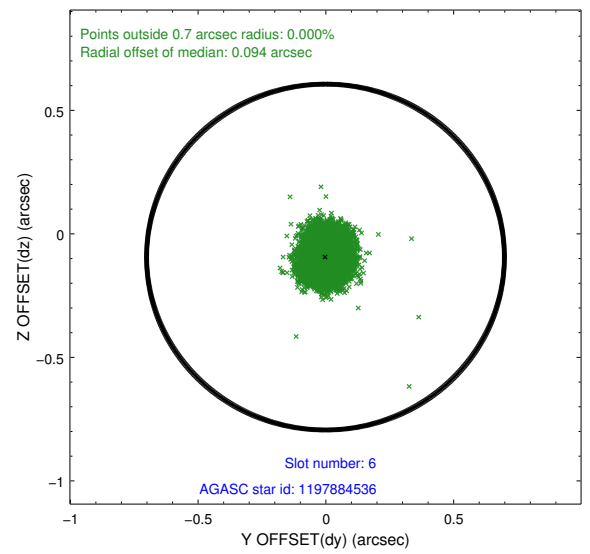
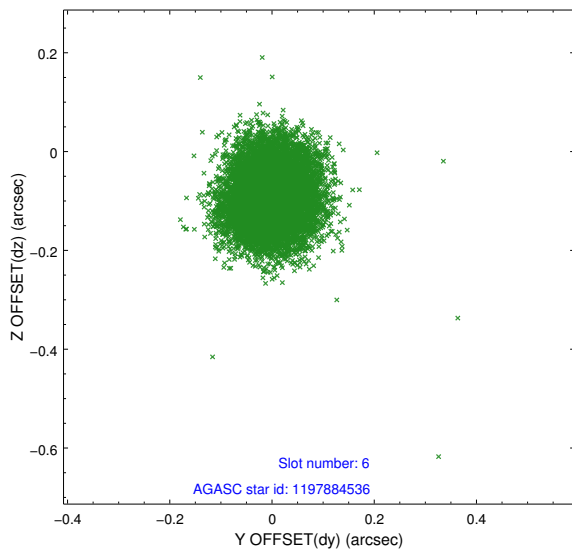
Time (s)



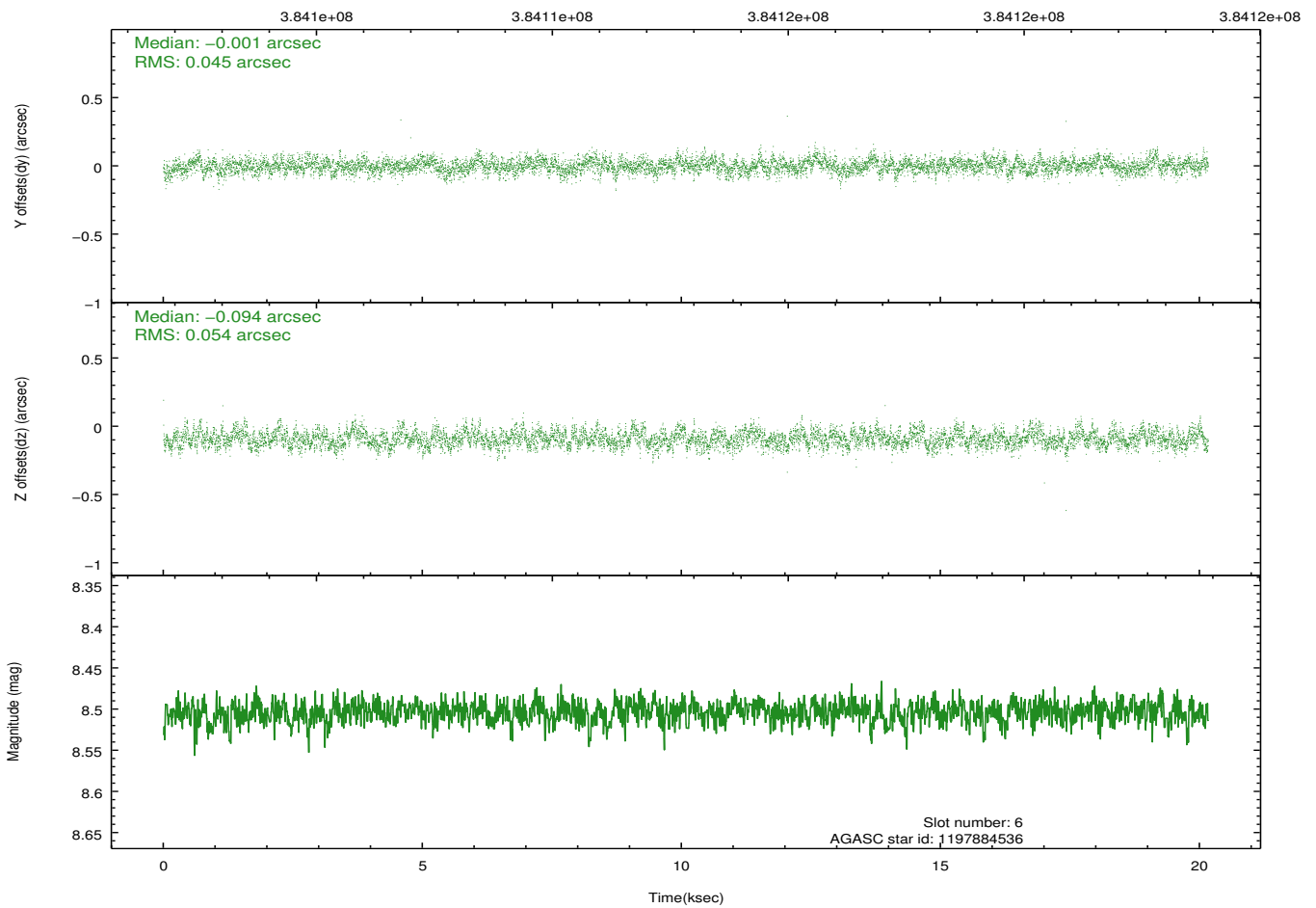
### 2.4.3 Slot 5



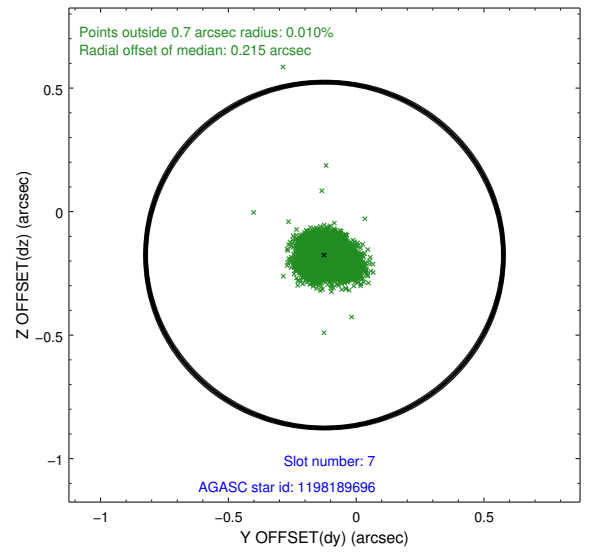
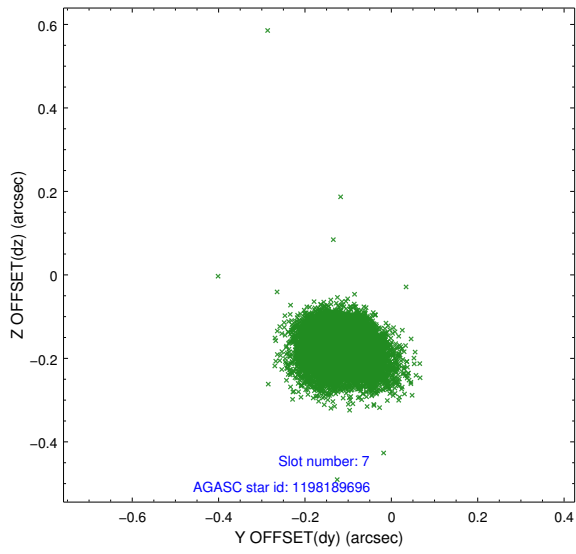
## 2.4.4 Slot 6



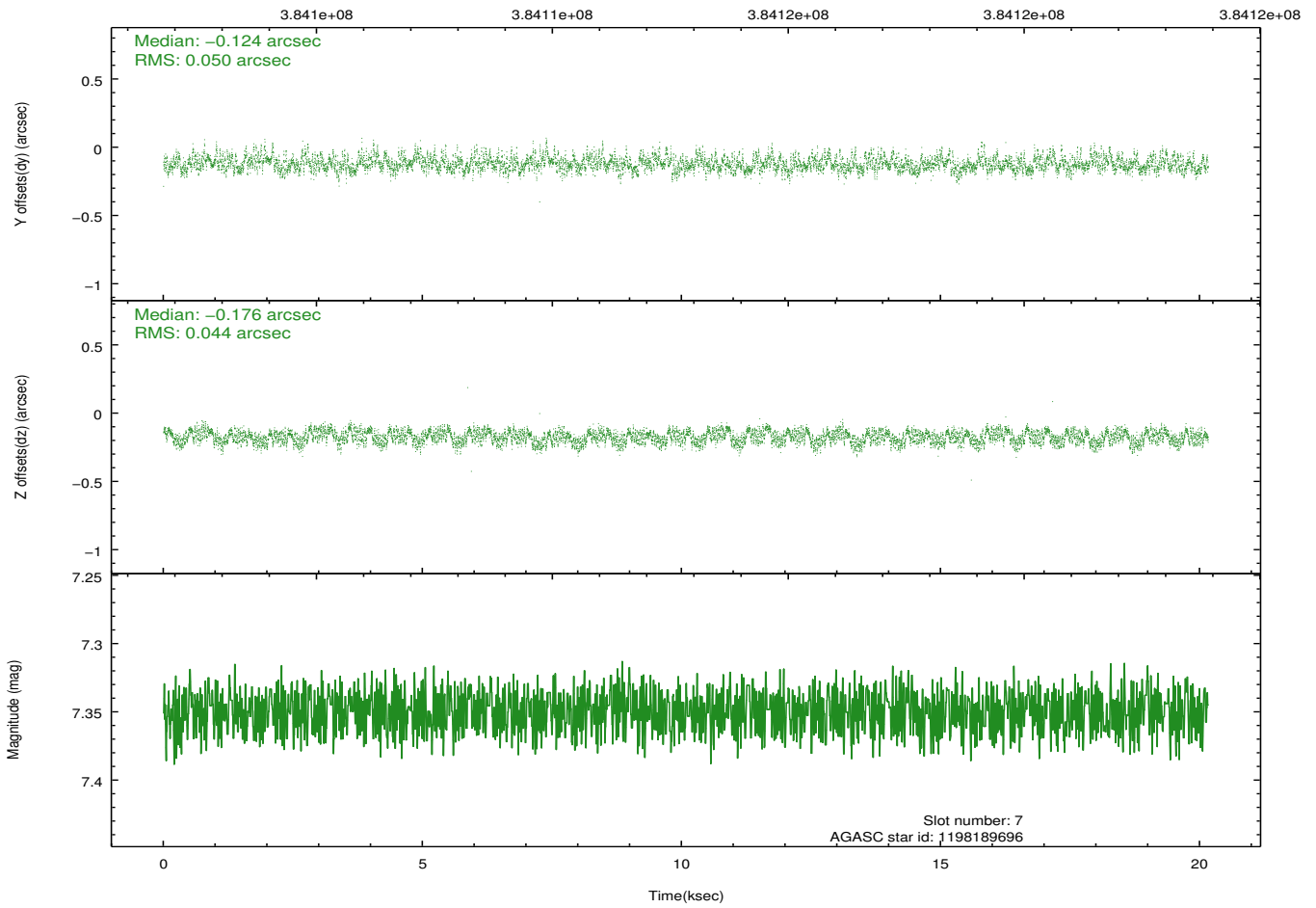
Time (s)



## 2.4.5 Slot 7

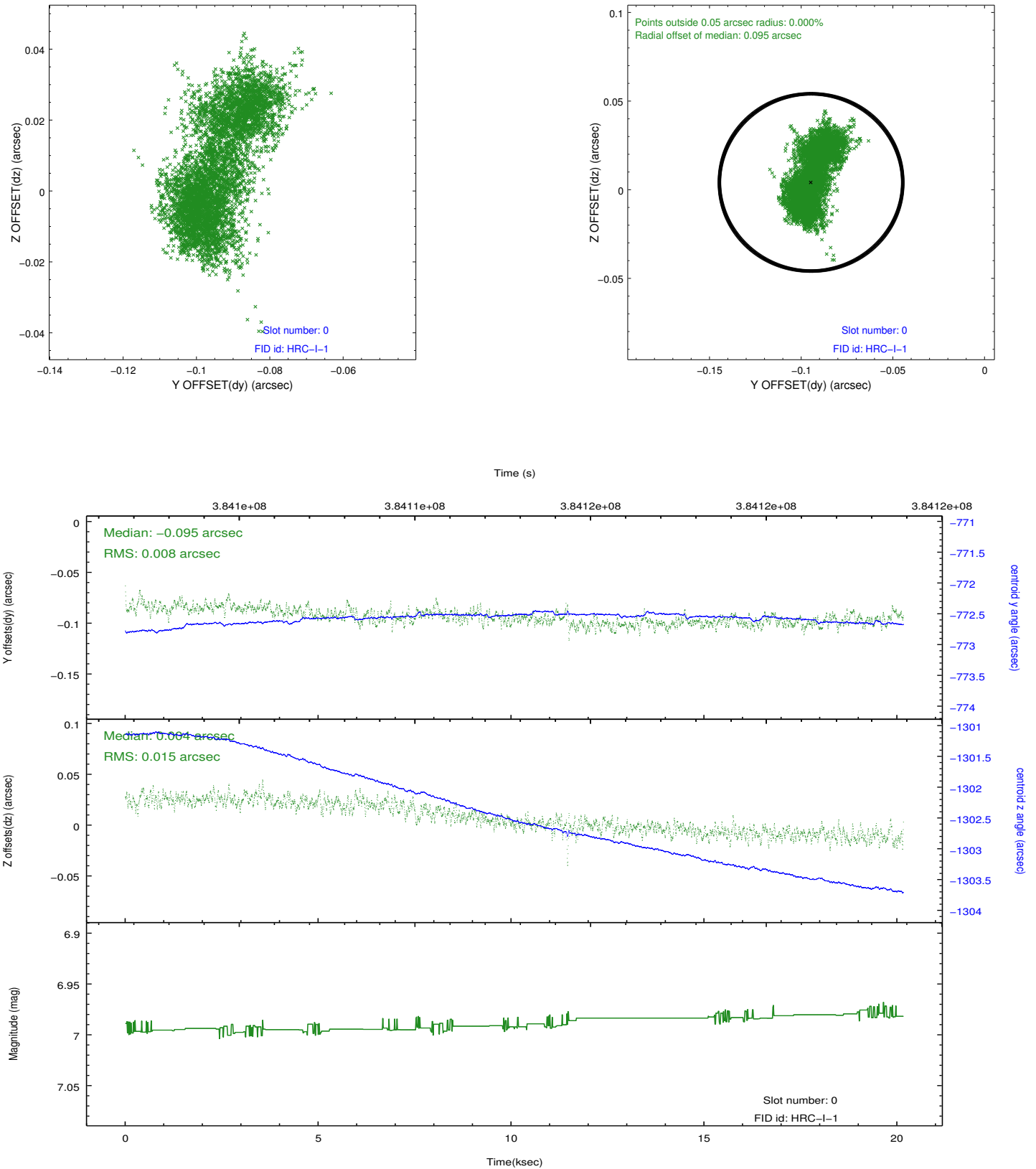


Time (s)

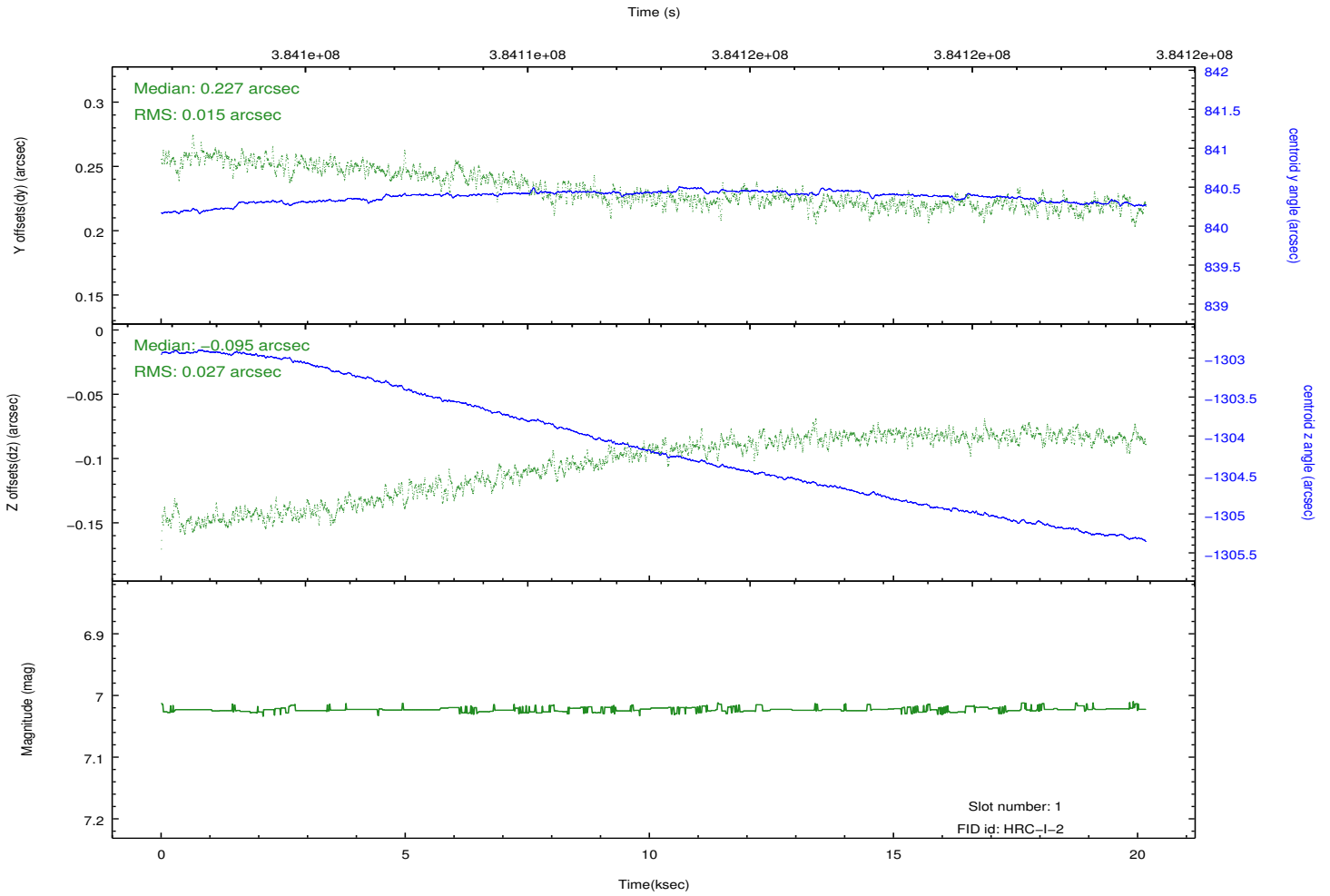
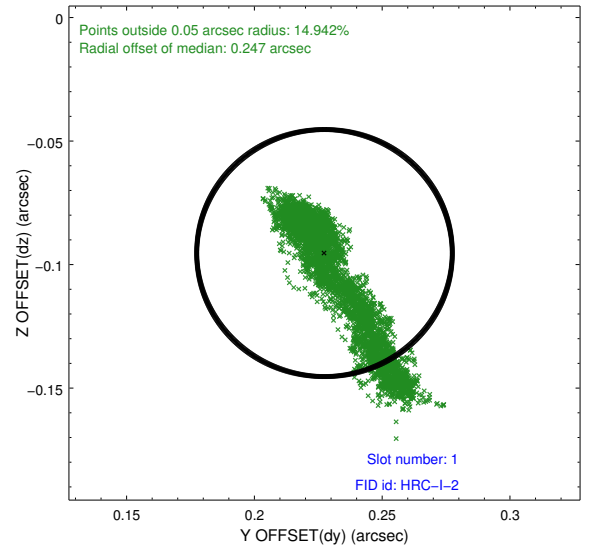
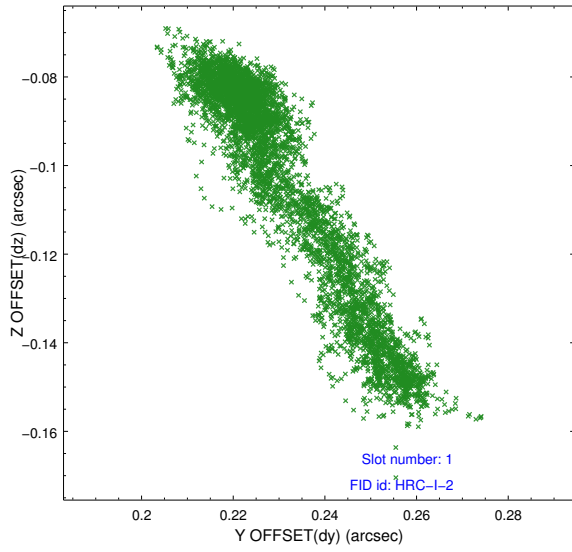


## 2.5 FID Slots

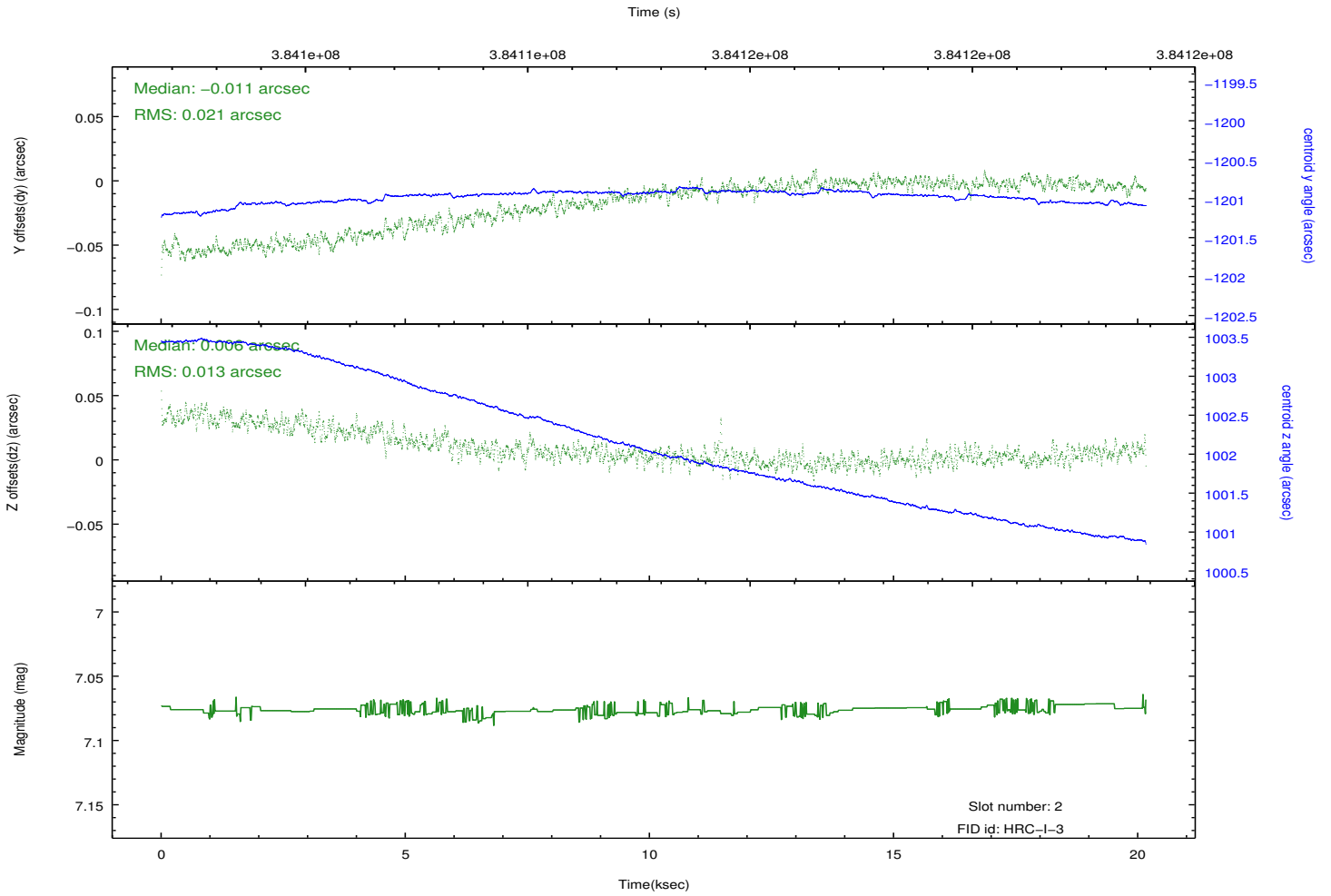
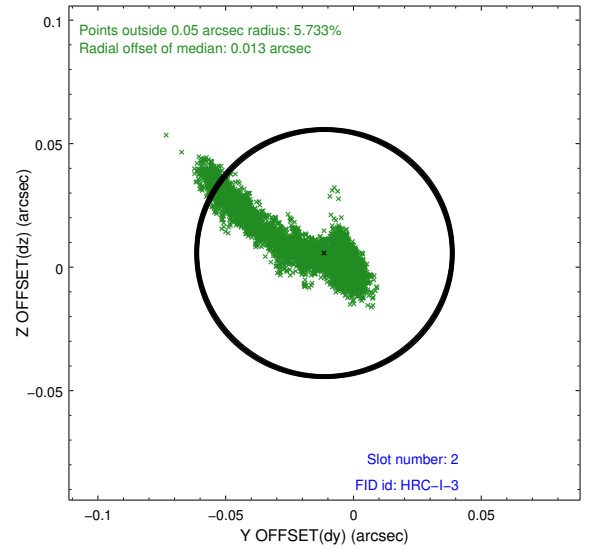
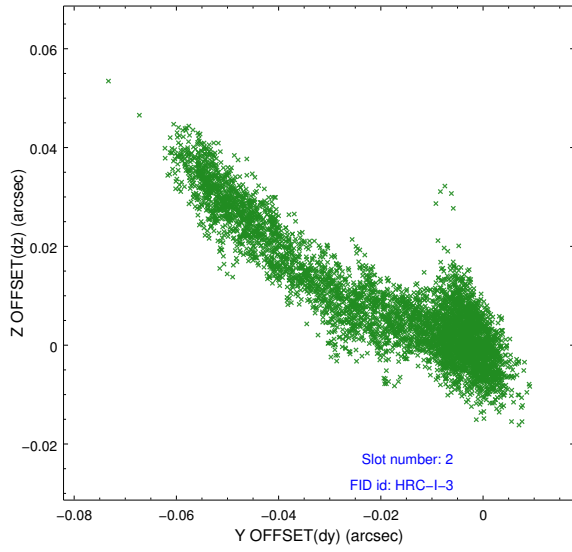
### 2.5.1 Slot 0



## 2.5.2 Slot 1



### 2.5.3 Slot 2



# A Summary

## A.1 Status

V&V Scientist	Beth Sundheim
V&V Date (YYYY-MM-DD)	2012.07.03
V&V Edition	1
V&V Disposition and Status	OK
V&V Charge Time	20.165082272708

## A.2 Comments