

V&V Reference Report

L2 ASCDS Version : 8.4.5

Observation 11233 - L2 Version 2
Chandra X-Ray Center

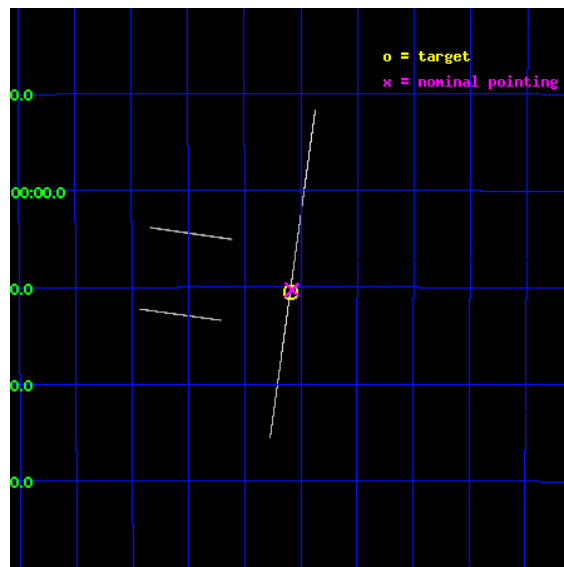
L2 Processing Date : Jun 20 2012

Contents

1	Front	2
2	OBI	3
2.1	OBI	3
2.1.1	Images	3
2.1.2	Bias	3
2.1.3	Parameters	4
2.1.4	Events	4
2.2	Compared Parameters	5
2.3	Aspect	6
2.4	Star Slots	9
2.4.1	Slot 3	9
2.4.2	Slot 4	10
2.4.3	Slot 5	11
2.4.4	Slot 6	12
2.4.5	Slot 7	13
2.5	FID Slots	14
2.5.1	Slot 0	14
2.5.2	Slot 1	15
2.5.3	Slot 2	16
A	Summary	17
A.1	Status	17
A.2	Comments	17

1 Front

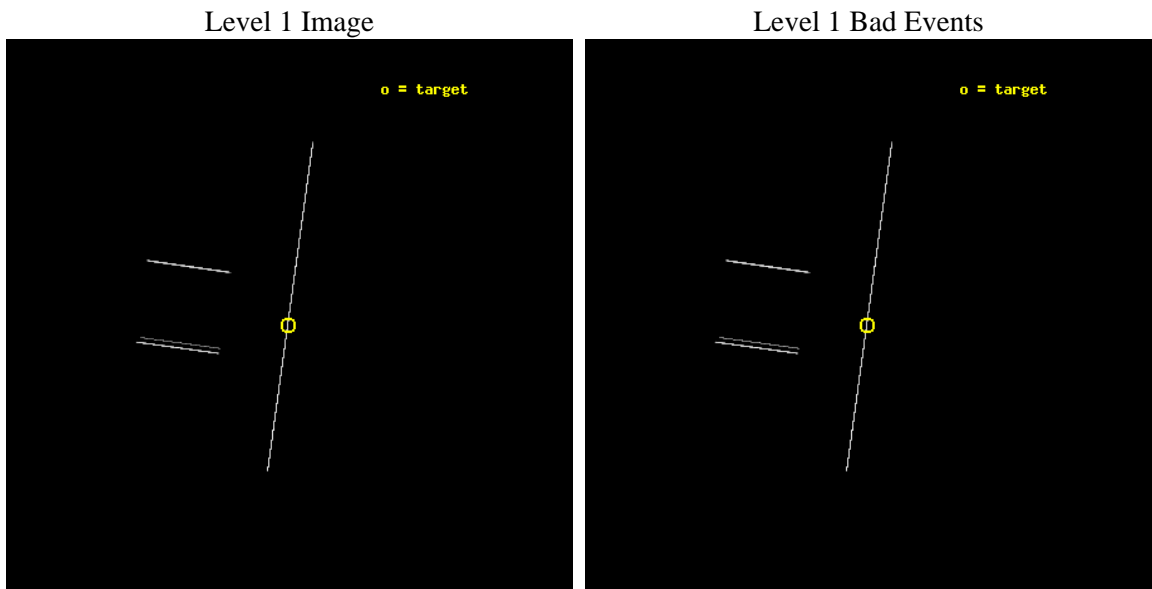
seq_num	501318	Sequence number
obs_id	11233	Observation id
title	Two Magnetar Candidates in HESS Supernova Remnants	Proposal title
observer	Dr. Eric Gotthelf	Principal investigator
object	CXOU J171405.7-381033	Source name
ra_targ	258.52375	Observer's specified target RA [deg]
dec_targ	-38.17525	Observer's specified target Dec [deg]
ra_nom	258.51984021938	Nominal RA [deg]
dec_nom	-38.171507731217	Nominal Dec [deg]
roll_nom	97.88772119513	Nominal Roll [deg]
revision	2	Processing version of data
ontime	30124.5	Sum of GTIs [s]
livelime	30006.826171875	Livetime [s]
ontime2	30124.5	Sum of GTIs [s]
ontime3	30124.5	Sum of GTIs [s]
ontime5	30124.5	Sum of GTIs [s]
ontime6	30124.5	Sum of GTIs [s]
ontime7	30124.5	Sum of GTIs [s]
ontime8	30124.5	Sum of GTIs [s]
l2events	488462	Number of level 2 events



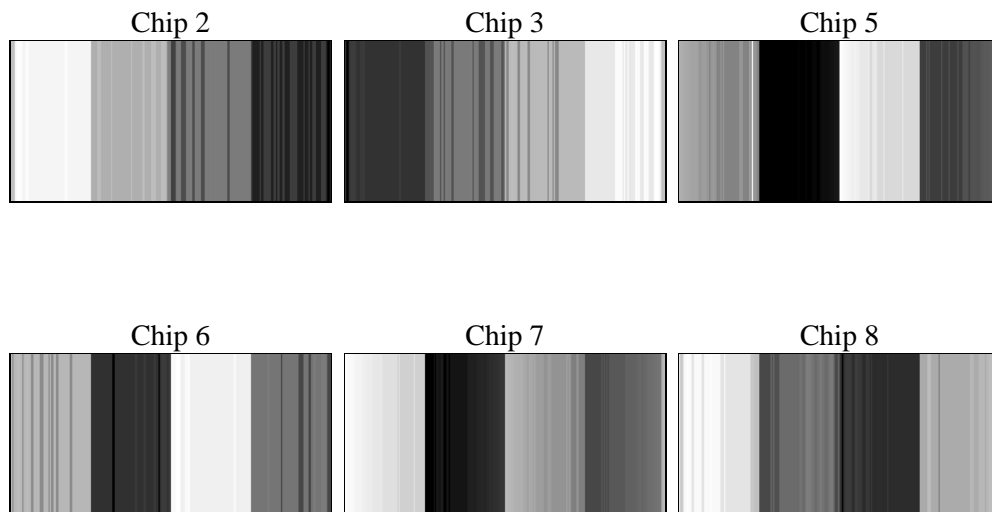
2 OBI

2.1 OBI

2.1.1 Images



2.1.2 Bias



2.1.3 Parameters

obi_num	0	Obi number	sched_exp_time	30000.000000	[s] Scheduled observation exposure time
ascdsver	8.4.5	Processing system revision	ontime	30124.5	Sum of GTIs [s]
caldbver	4.4.10	 	ontime2	30124.5	Sum of GTIs [s]
date	2012-06-20T13:47:15	Date and time of file creation	ontime3	30124.5	Sum of GTIs [s]
revision	2	Processing version of data	ontime5	30124.5	Sum of GTIs [s]
			ontime6	30124.5	Sum of GTIs [s]
			ontime7	30124.5	Sum of GTIs [s]
			ontime8	30124.5	Sum of GTIs [s]
			l1events	3126602	Number of level 1 events

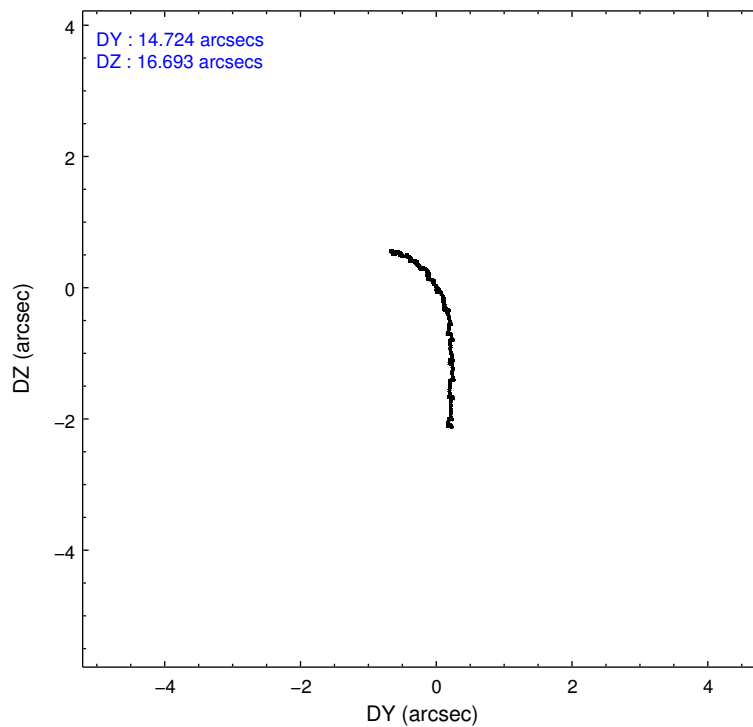
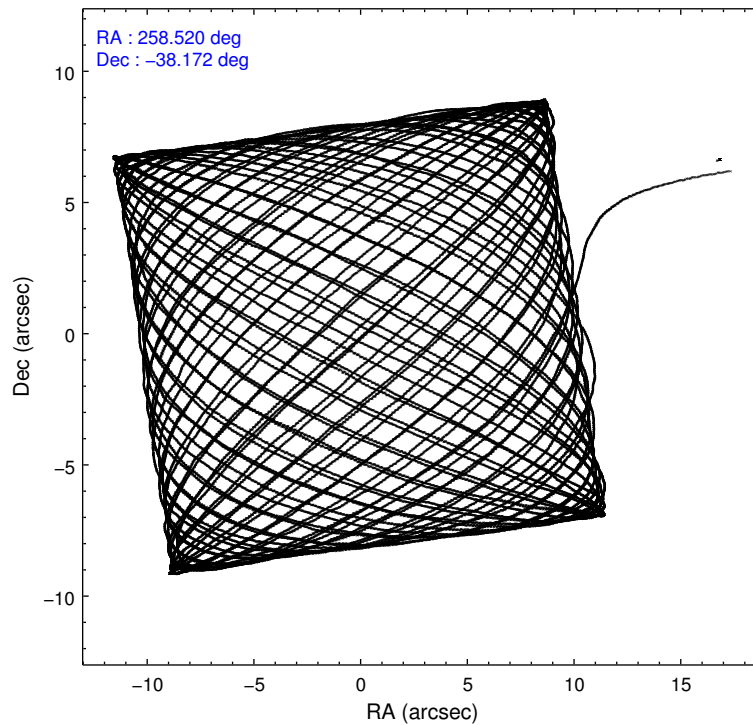
2.1.4 Events

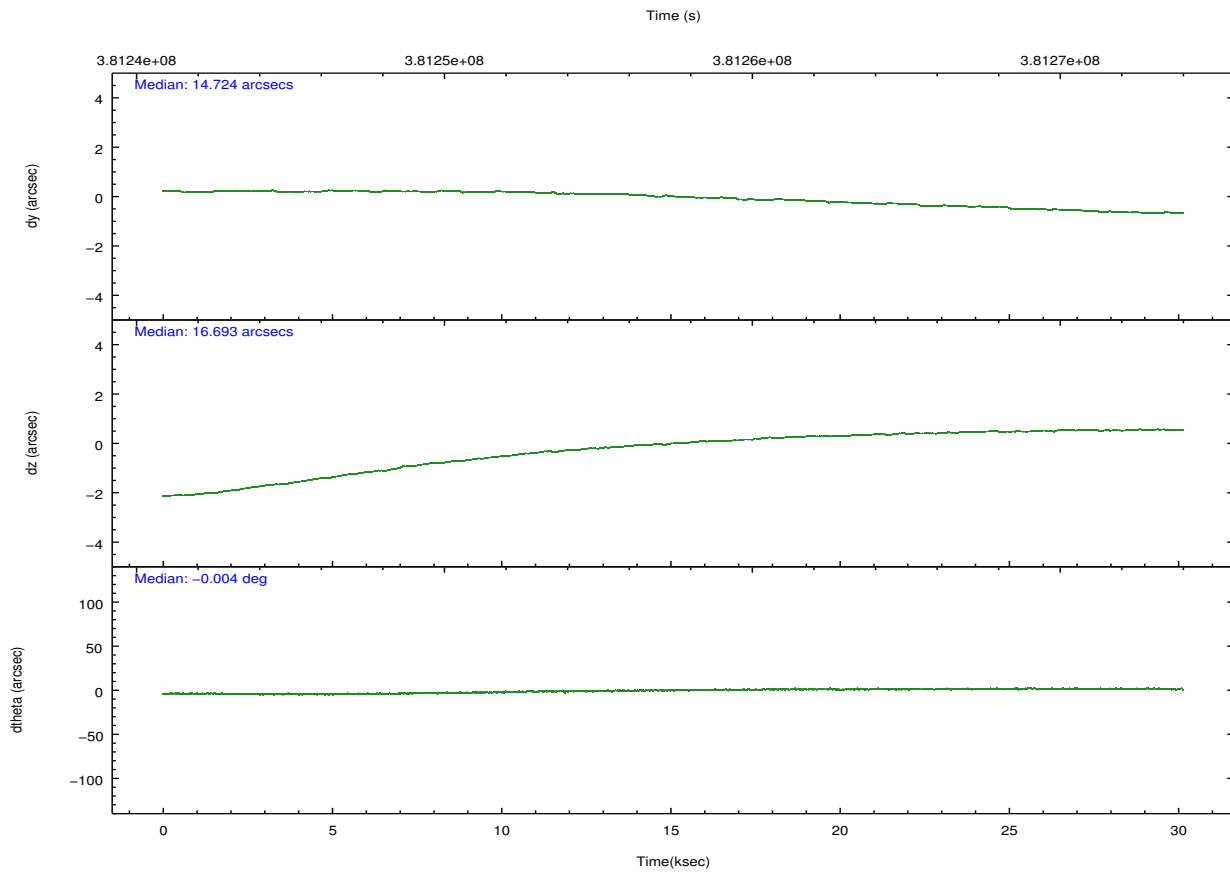
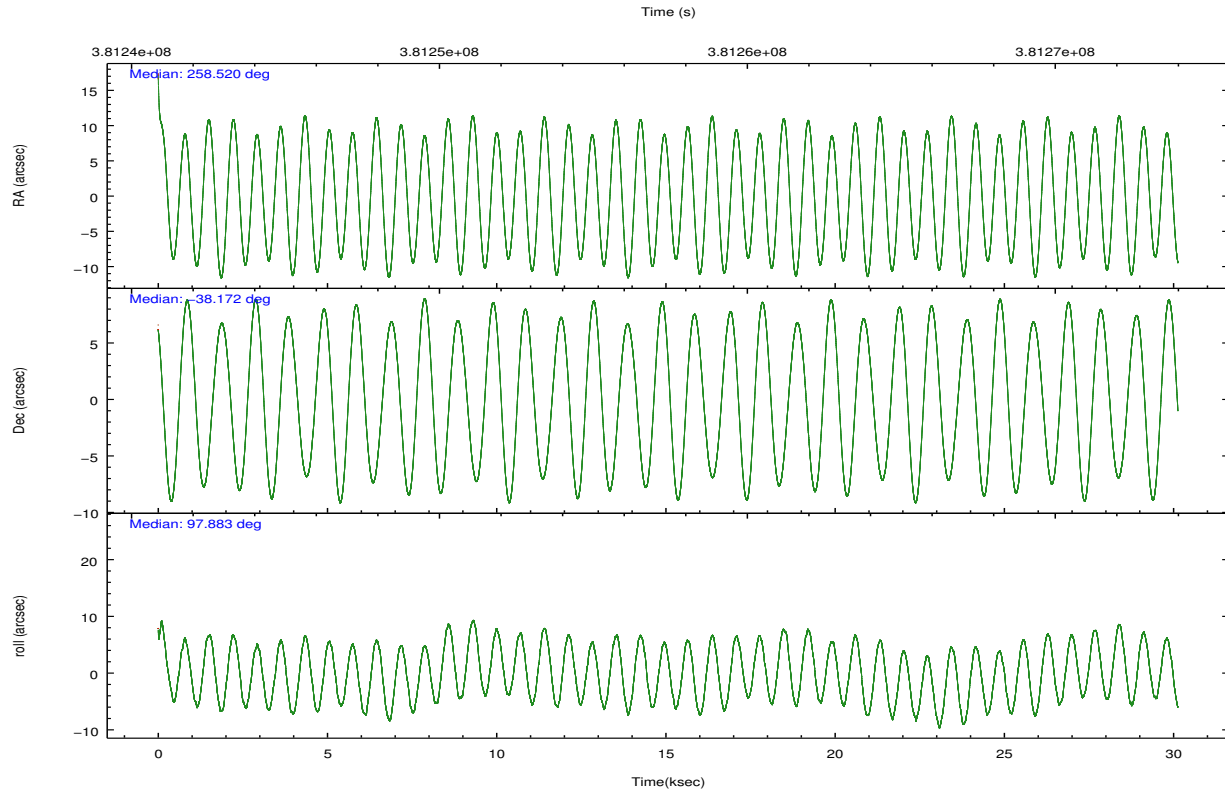
	ccd 2	ccd 3	ccd 5	ccd 6	ccd 7	ccd 8		ccd 2	ccd 3	ccd 5	ccd 6	ccd 7	ccd 8
level 1 events	484055	453461	548664	445685	475755	718982	grade 0 events	5558	5722	19989	5338	13207	27622
rejected events	443923	411171	341693	401823	321727	600384		1%	1%	3%	1%	2%	3%
rejected %	91%	90%	62%	90%	67%	83%	grade 1 events	243	232	522	259	479	523
								0%	0%	0%	0%	0%	0%
							grade 2 events	15328	15427	68132	16596	42593	35910
								3%	3%	12%	3%	8%	4%
							grade 3 events	5719	6706	5543	6442	9864	13952
								1%	1%	1%	1%	2%	1%
							grade 4 events	5996	5967	5314	6059	9862	13555
								1%	1%	0%	1%	2%	1%
							grade 5 events	10569	11763	28645	11837	33154	17625
								2%	2%	5%	2%	6%	2%
							grade 6 events	8924	10006	118635	11089	84009	31737
								1%	2%	21%	2%	17%	4%
							grade 7 events	431718	397638	301884	388065	282587	578058
								89%	87%	55%	87%	59%	80%

2.2 Compared Parameters

Parameter	Planned	Actual	Parameter	Planned	Actual
Instrument	ACIS	ACIS	Obspar format version number	7	7
Detector	ACIS-235678	ACIS-235678	Obspar file type	PREDICTED	ACTUAL
Grating	NONE	NONE	Obspar update status	NONE	UPDATED
Data mode	CC33_FAINT	CC33_FAINT	CCD I0 on	N	N
Observation mode	POINTING	POINTING	CCD I1 on	N	N
[deg] Pointing RA	258.541555	258.5198402193847	CCD I2 on	O2	Y
[deg] Pointing Dec	-38.192858	-38.17150773121729	CCD I3 on	O1	Y
[deg] Pointing Roll	97.744520	97.88772119513013	CCD S0 on	N	N
[mm] SIM focus pos	-0.684267	-0.6828225247311905	CCD S1 on	Y	Y
[mm] SIM defocus	0	0.001444936568705701	CCD S2 on	Y	Y
[mm] SIM translation stage pos	-190.132523	-190.1425803651734	CCD S3 on	Y	Y
[mm] SIM translation stage offset	0	0.01005778216563158	CCD S4 on	Y	Y
[s] Observation start time (MET)	381242496.184000	381241252.75324	CCD S5 on	N	N
Observation start date	2010-01-30T12:40:30	2010-01-30T12:20:52	Number of optional ACIS chips dropped	0	0
[s] Observation end time (MET)	381272496.184000	381273643.77988	On-chip summing requested	N	N
Observation end date	2010-01-30T21:00:30	2010-01-30T21:20:43	Subarray requested	NONE	NONE
Read mode	CONTINUOUS	CONTINUOUS	Alternating exposures requested	N	N
			[s] Primary exposure time	0.000000	0

2.3 Aspect



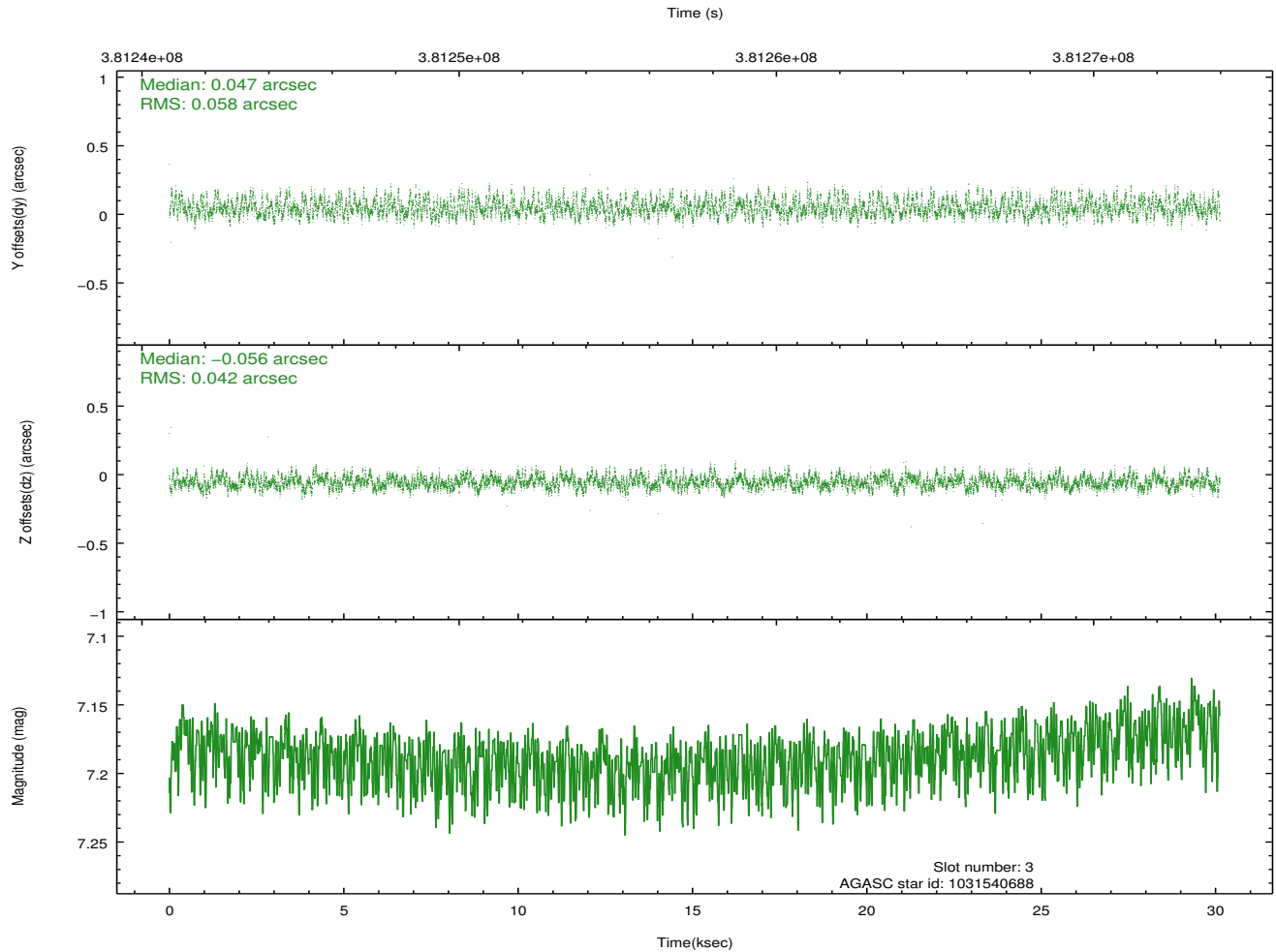
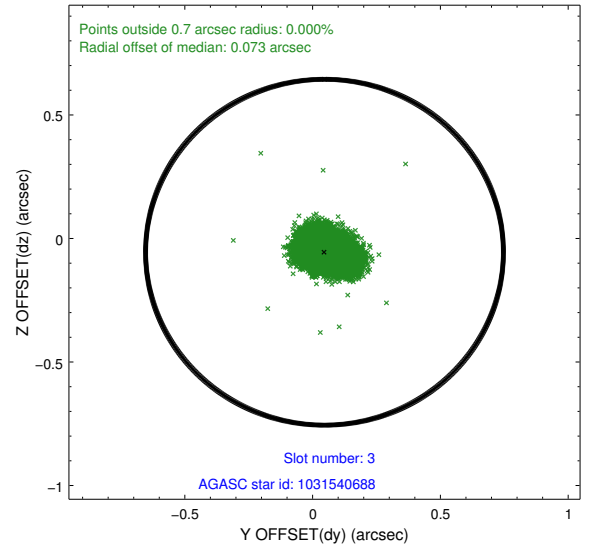
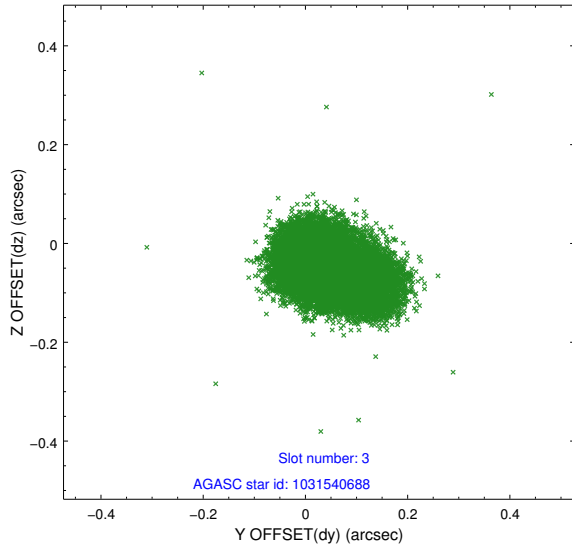


Slot Statistics

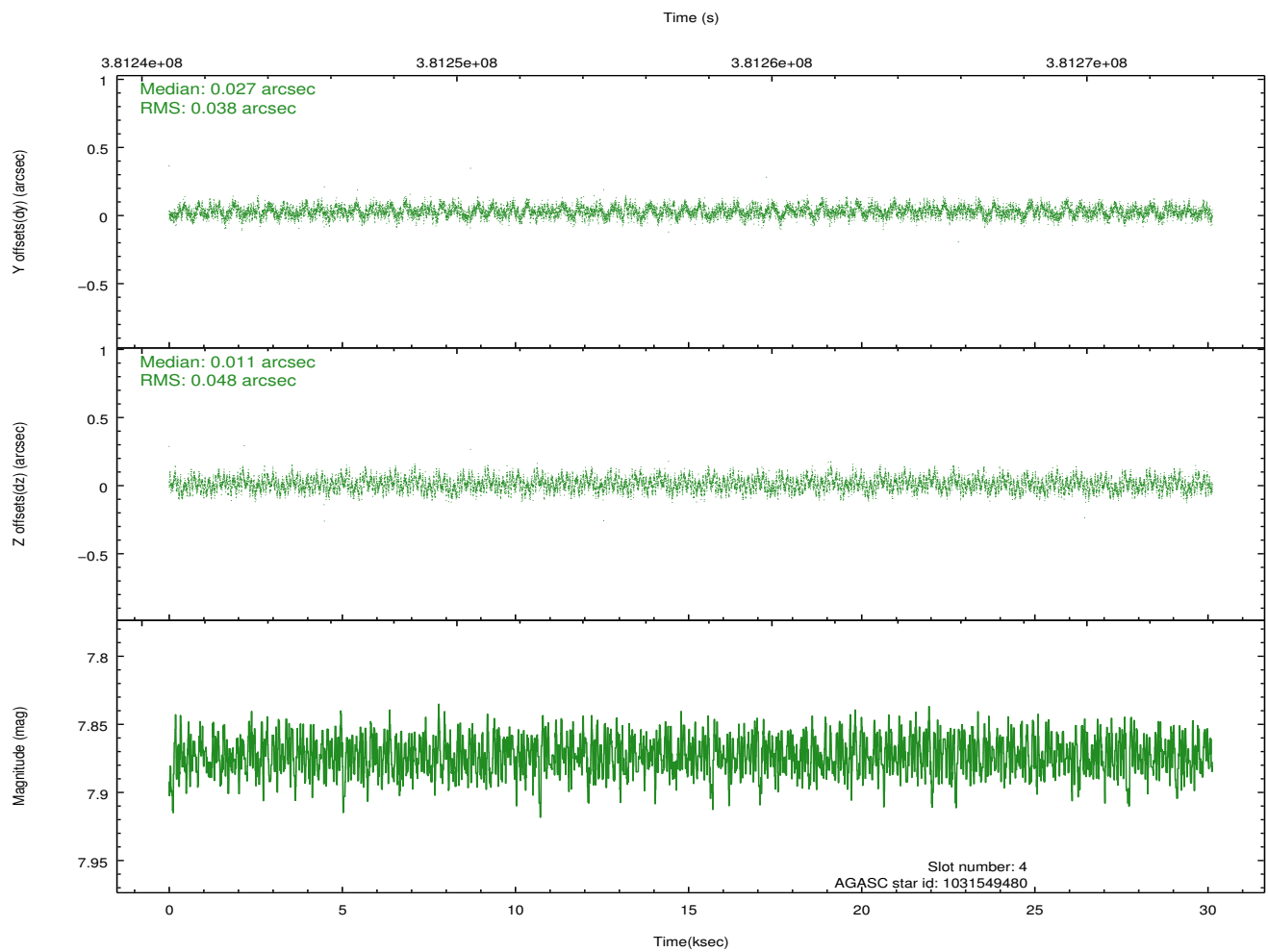
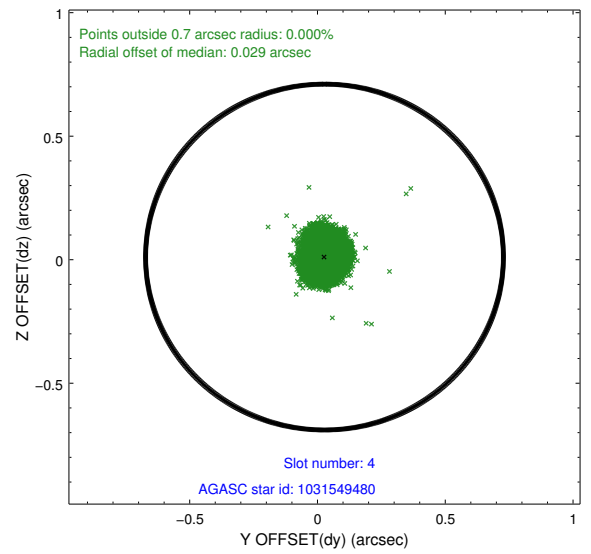
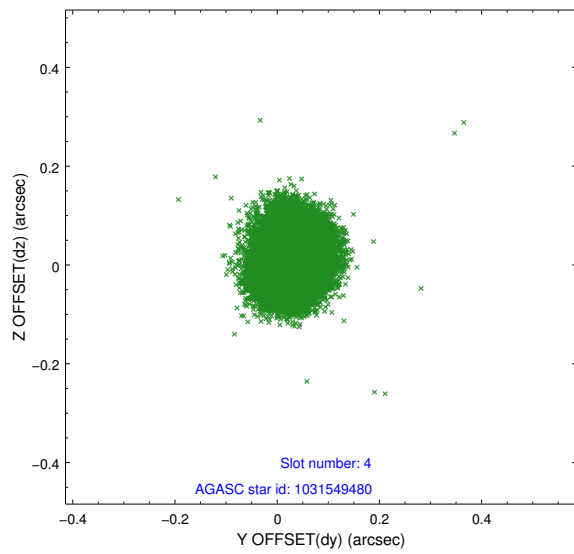
slot	status	id	mag	n_pts	med_dy	med_dz	dr1	dr2	ra	dec	mean_y	mean_z
0	FID	ACIS-S-1	7.04	7348	0.051	-0.072	0.028	0.066	0.000000	0.000000	928.46	-1733.46
1	FID	ACIS-S-4	7.04	7350	0.129	0.026	0.016	0.025	0.000000	0.000000	2146.01	170.70
2	FID	ACIS-S-5	7.08	7348	-0.201	0.056	0.031	0.040	0.000000	0.000000	-1820.55	164.44
3	GUIDE	1031540688	7.19	14696	0.047	-0.056	0.078	0.122	258.843021	-38.212972	-187.68	-834.82
4	GUIDE	1031549480	7.87	14695	0.027	0.011	0.066	0.103	258.859583	-38.394348	-840.88	-791.06
5	GUIDE	1031538744	7.07	14698	-0.275	-0.354	0.068	0.104	257.905000	-37.853256	1448.78	1629.06
6	GUIDE	1031545136	8.65	14665	0.103	0.107	0.084	0.140	259.045363	-38.336683	-708.06	-1338.96
7	GUIDE	1031541992	8.55	14675	0.089	0.285	0.068	0.108	259.348449	-38.357588	-903.99	-2175.41

2.4 Star Slots

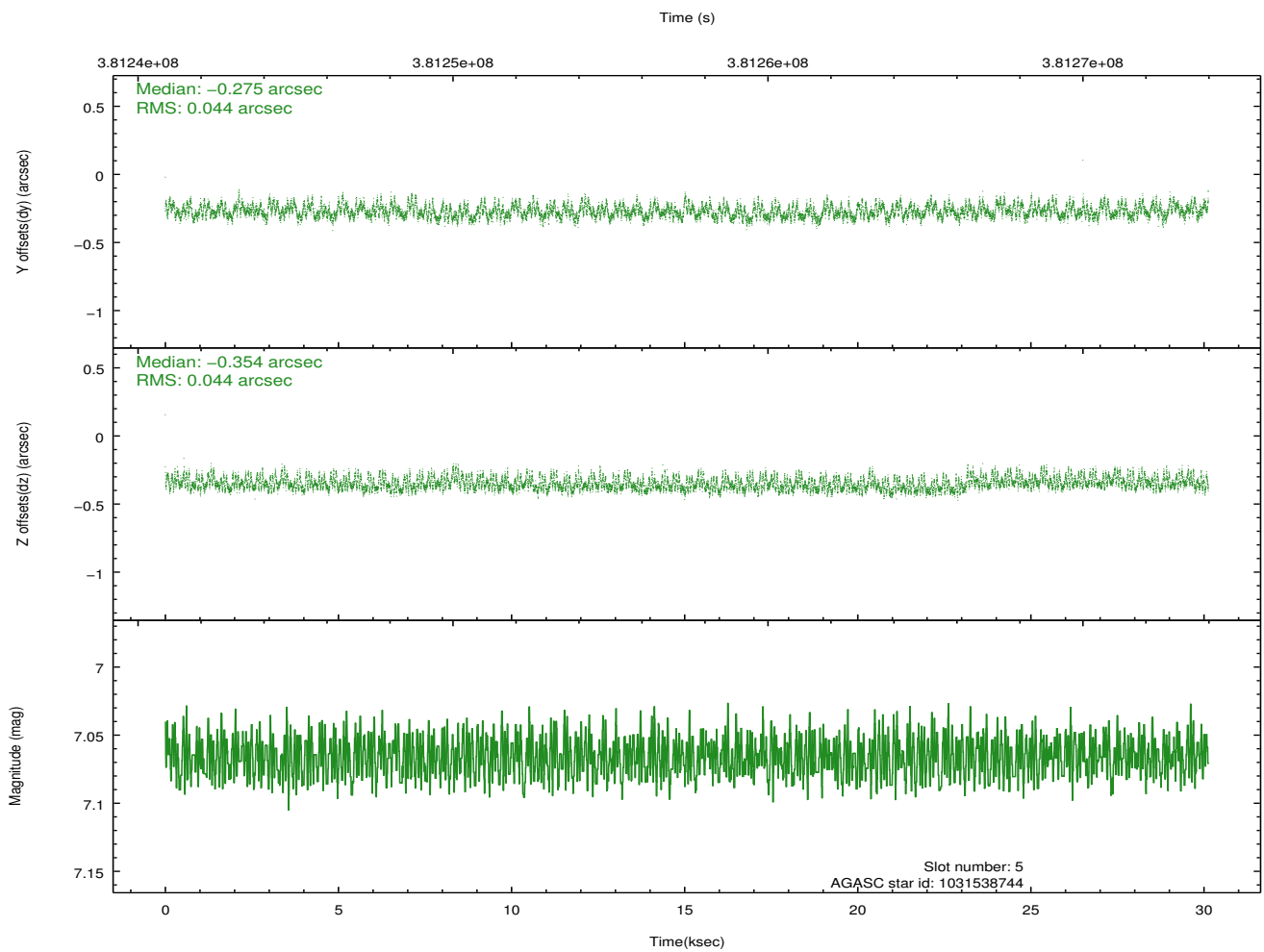
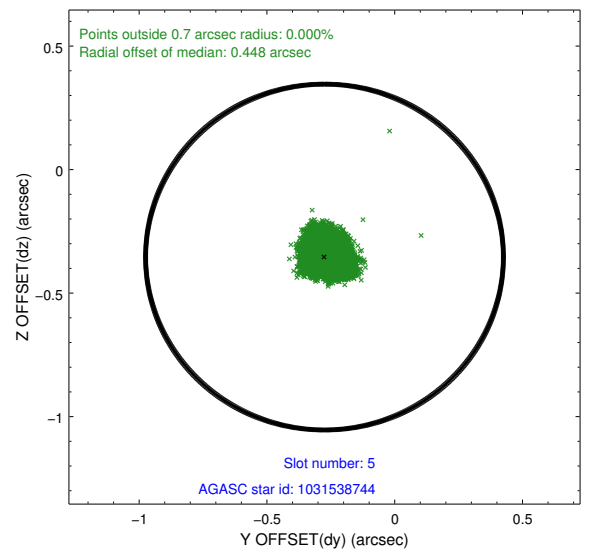
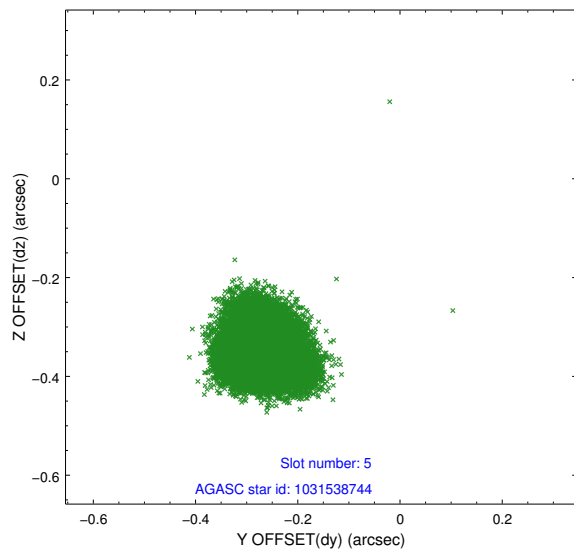
2.4.1 Slot 3



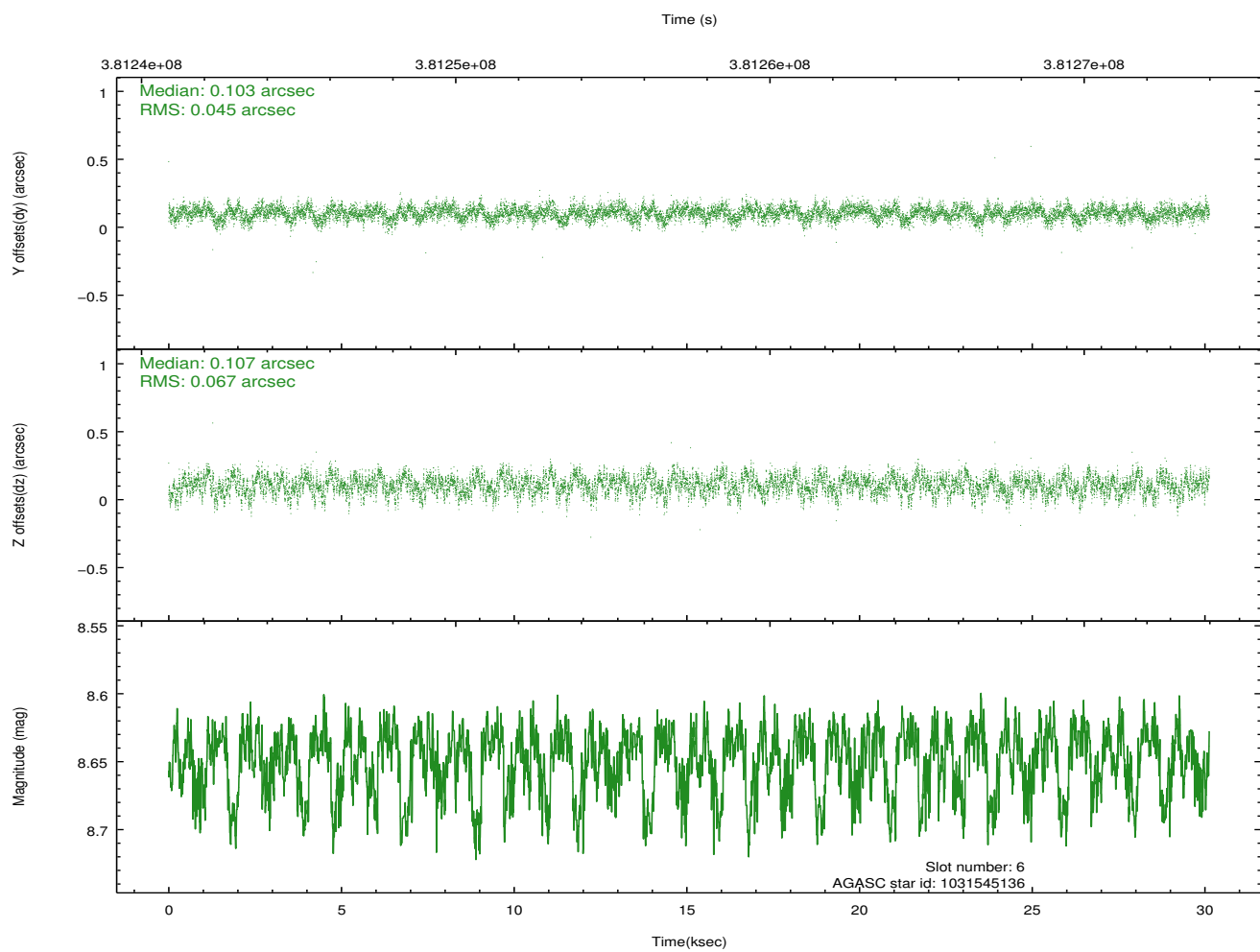
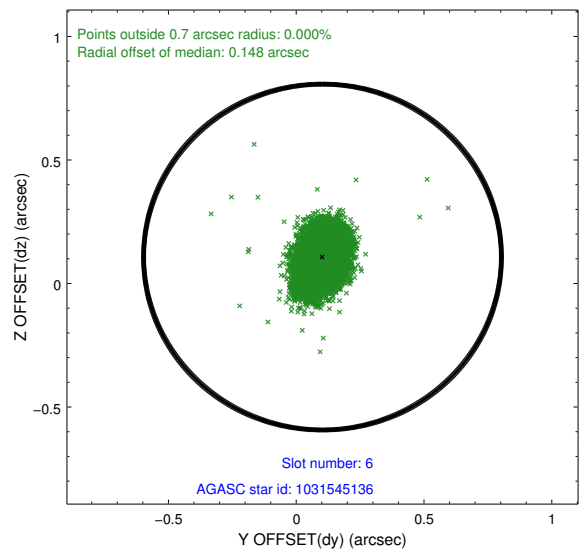
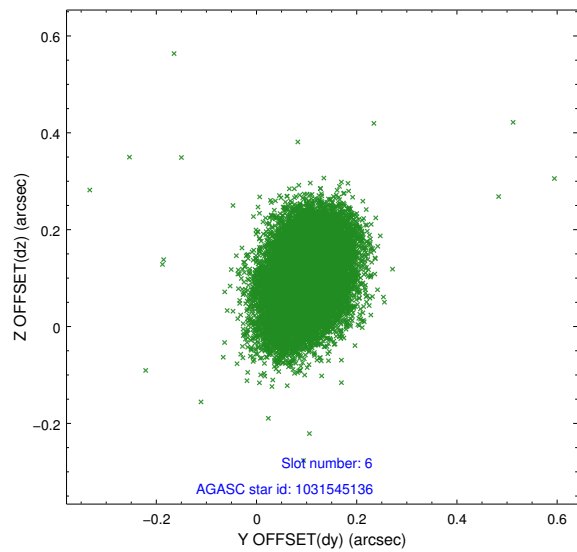
2.4.2 Slot 4



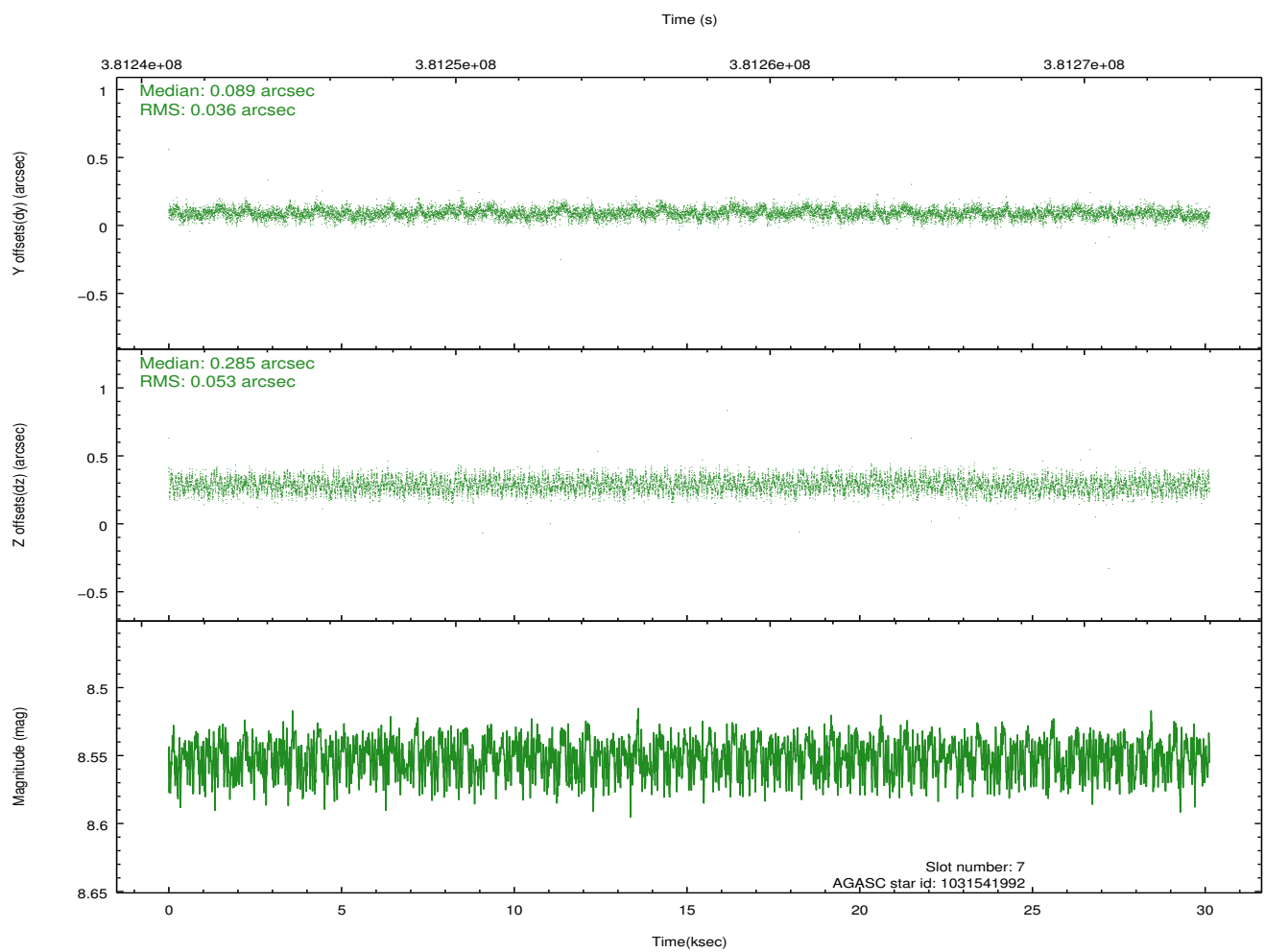
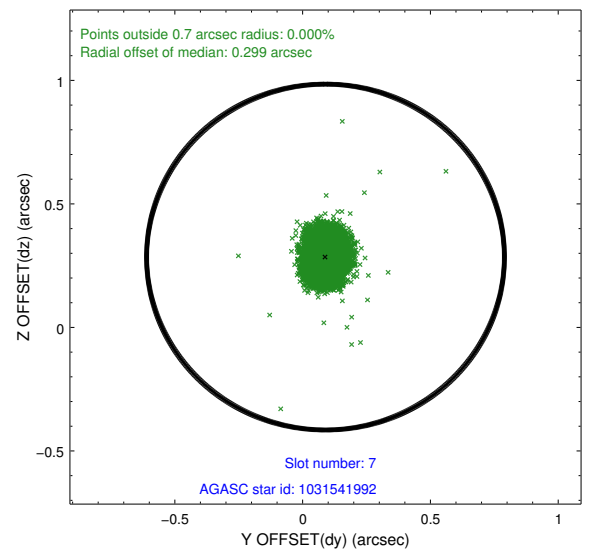
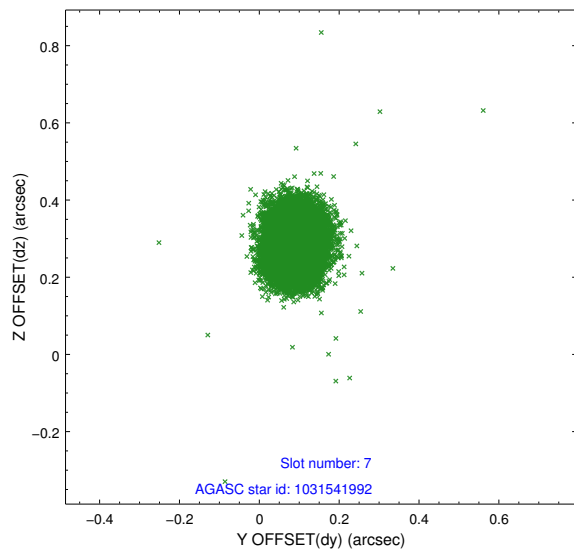
2.4.3 Slot 5



2.4.4 Slot 6

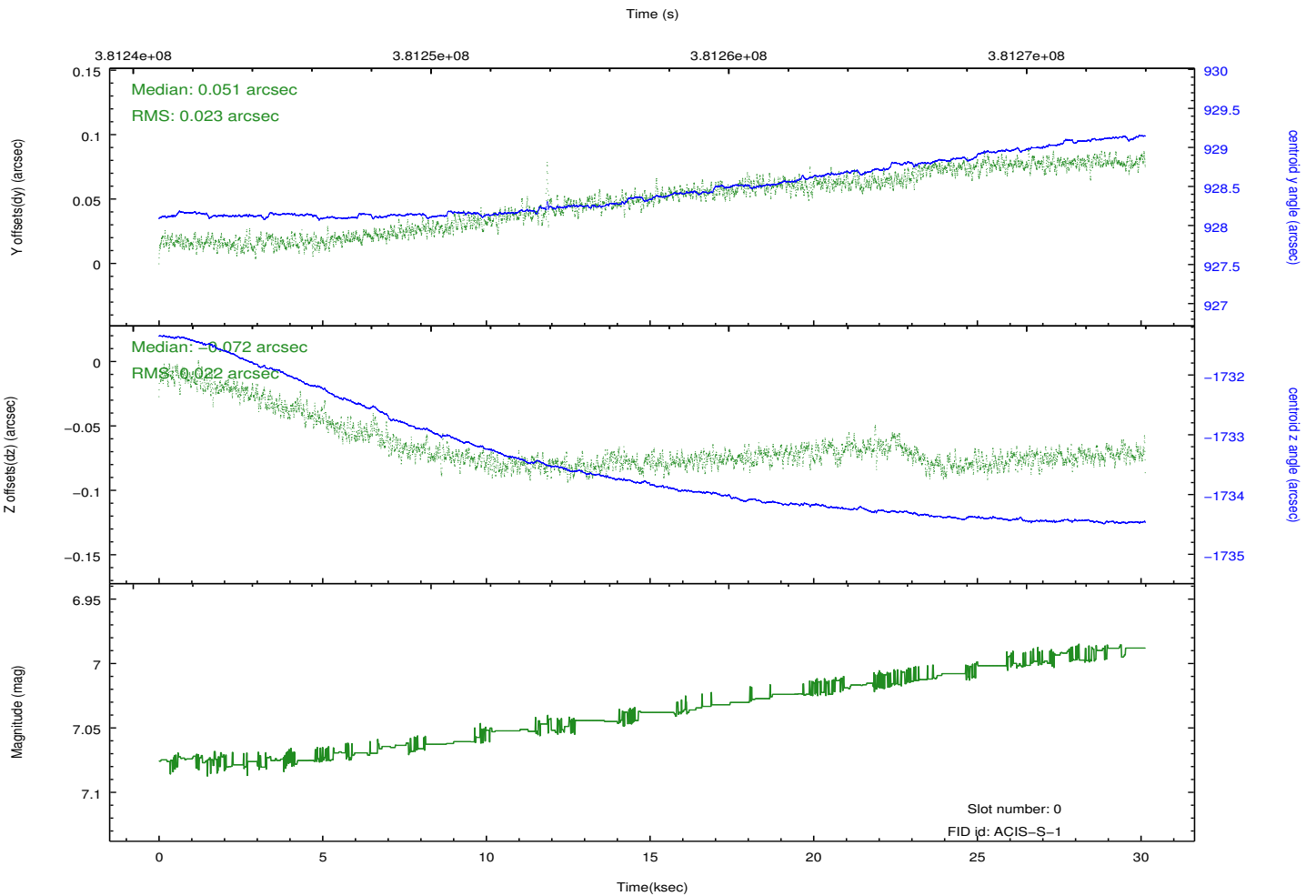
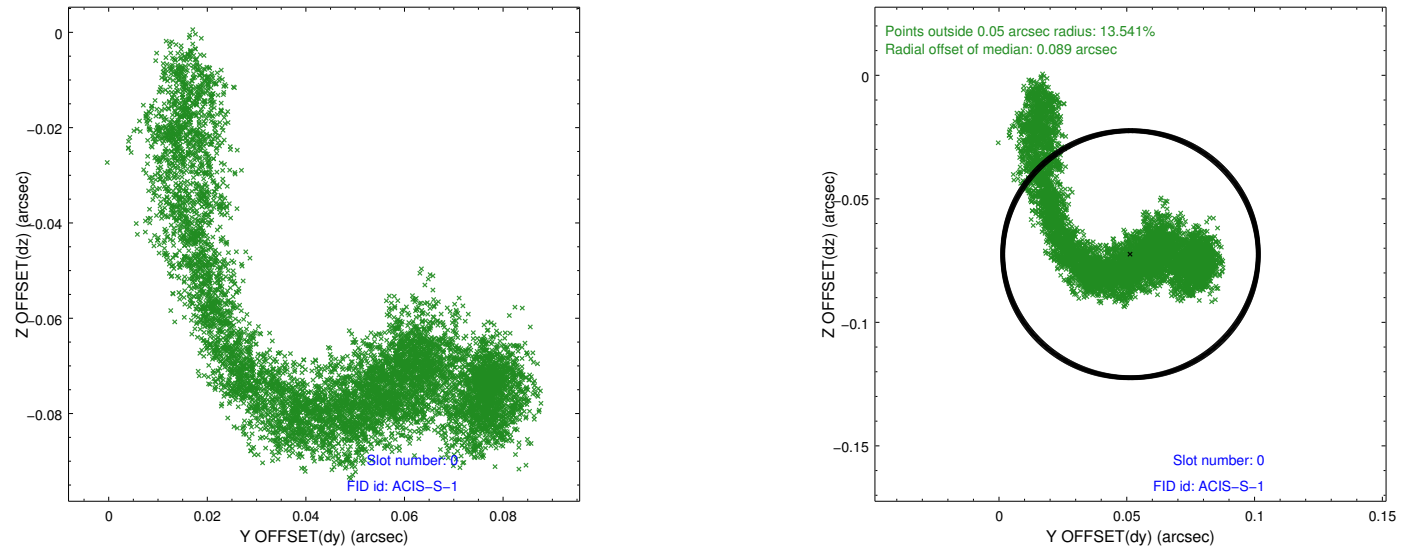


2.4.5 Slot 7

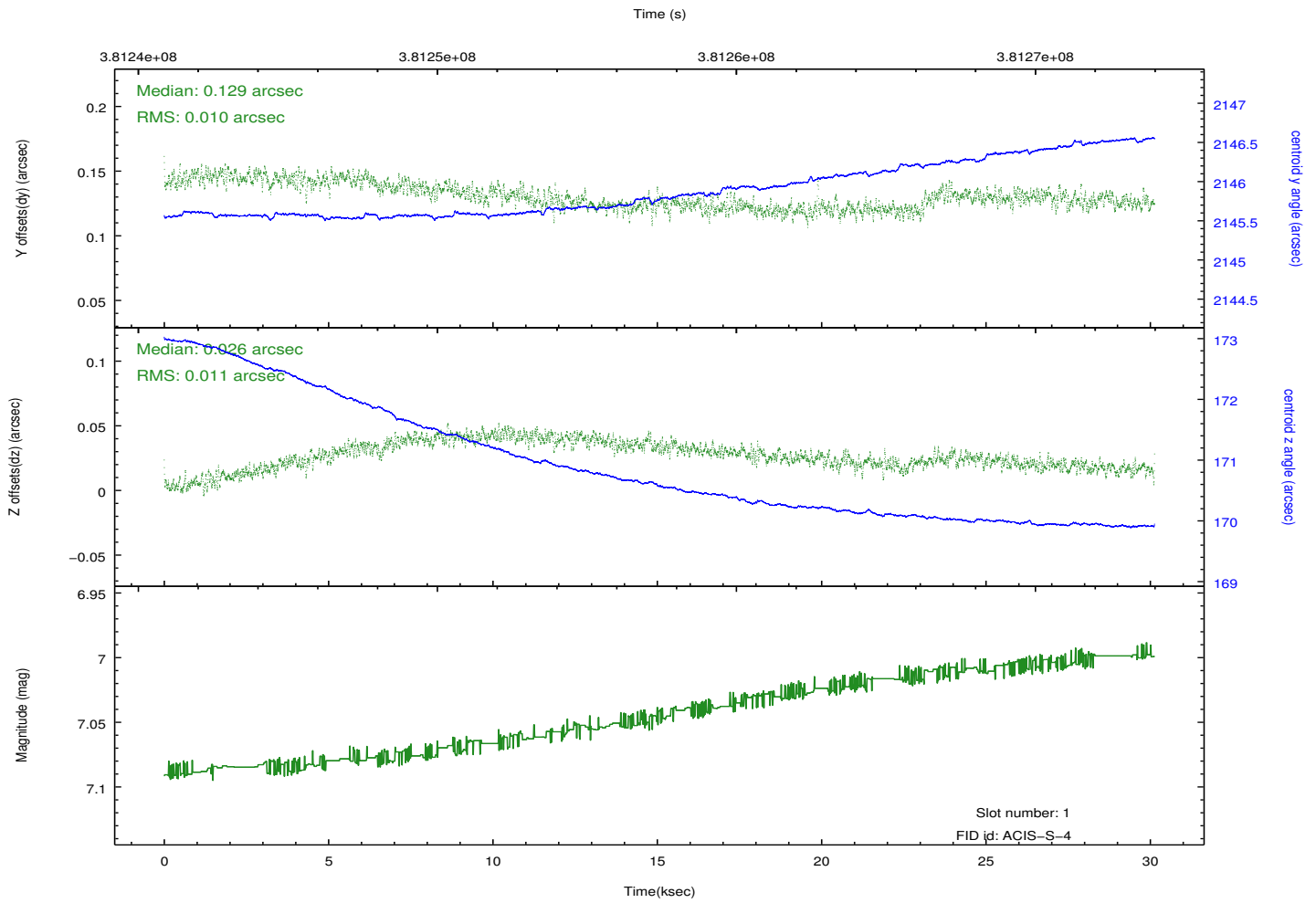
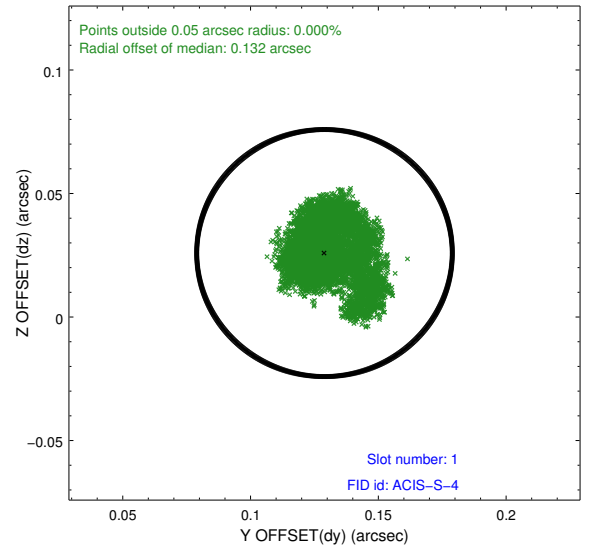
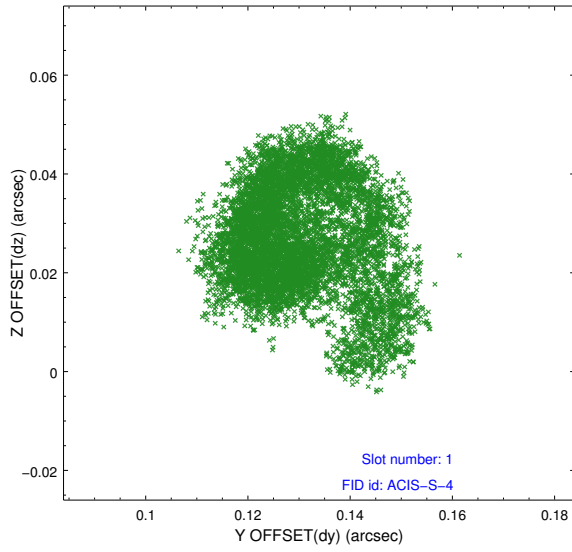


2.5 FID Slots

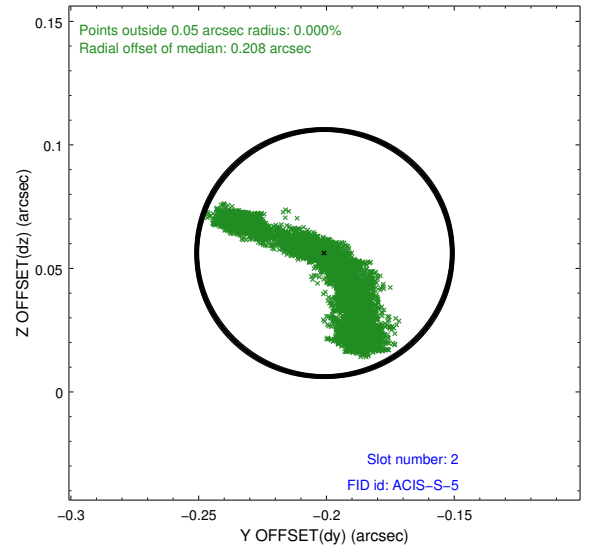
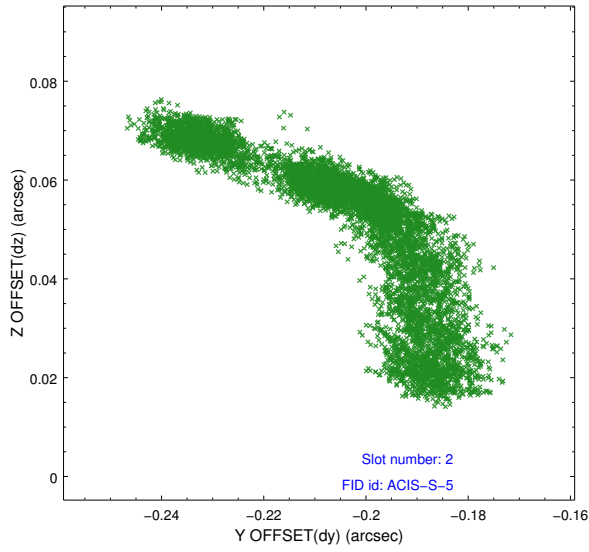
2.5.1 Slot 0



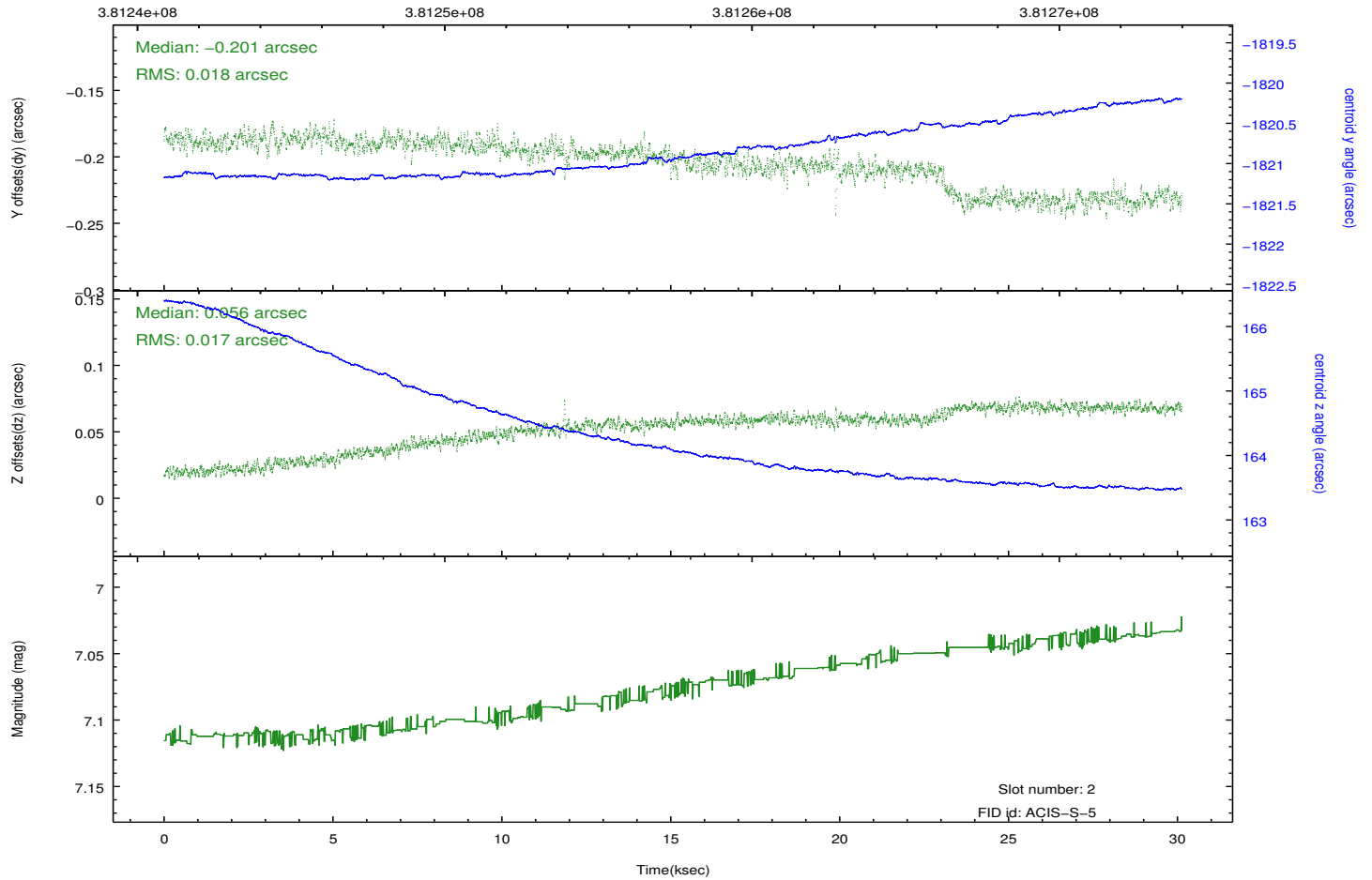
2.5.2 Slot 1



2.5.3 Slot 2



Time (s)



A Summary

A.1 Status

V&V Scientist	Joy Nichols
V&V Date (YYYY-MM-DD)	2012.06.21
V&V Edition	1
V&V Disposition and Status	OK
V&V Charge Time	30.1245

A.2 Comments