

# V&V Reference Report

## L2 ASCDS Version : 8.4.5

Observation 11303 - L2 Version 2  
Chandra X-Ray Center

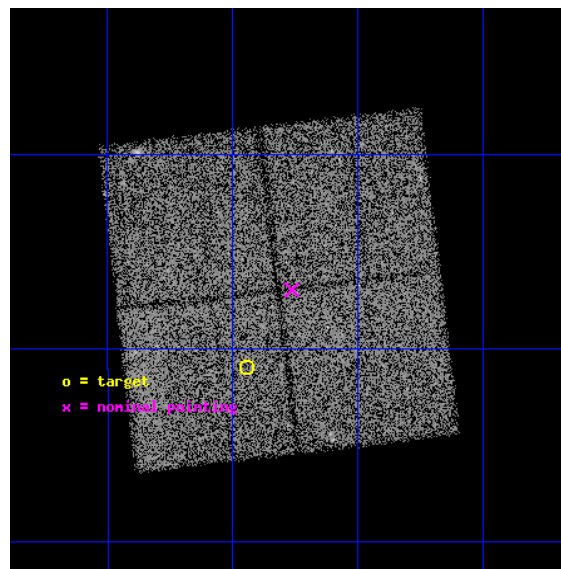
L2 Processing Date : Jun 25 2012

## Contents

<b>1</b>	<b>Front</b>	<b>2</b>
<b>2</b>	<b>OBI</b>	<b>3</b>
2.1	OBI . . . . .	3
2.1.1	Images . . . . .	3
2.1.2	Bias . . . . .	3
2.1.3	Parameters . . . . .	4
2.1.4	Events . . . . .	4
2.2	Compared Parameters . . . . .	5
2.3	Aspect . . . . .	6
2.4	Star Slots . . . . .	9
2.4.1	Slot 3 . . . . .	9
2.4.2	Slot 4 . . . . .	10
2.4.3	Slot 5 . . . . .	11
2.4.4	Slot 6 . . . . .	12
2.4.5	Slot 7 . . . . .	13
2.5	FID Slots . . . . .	14
2.5.1	Slot 0 . . . . .	14
2.5.2	Slot 1 . . . . .	15
2.5.3	Slot 2 . . . . .	16
<b>A</b>	<b>Summary</b>	<b>17</b>
A.1	Status . . . . .	17
A.2	Comments . . . . .	17

# 1 Front

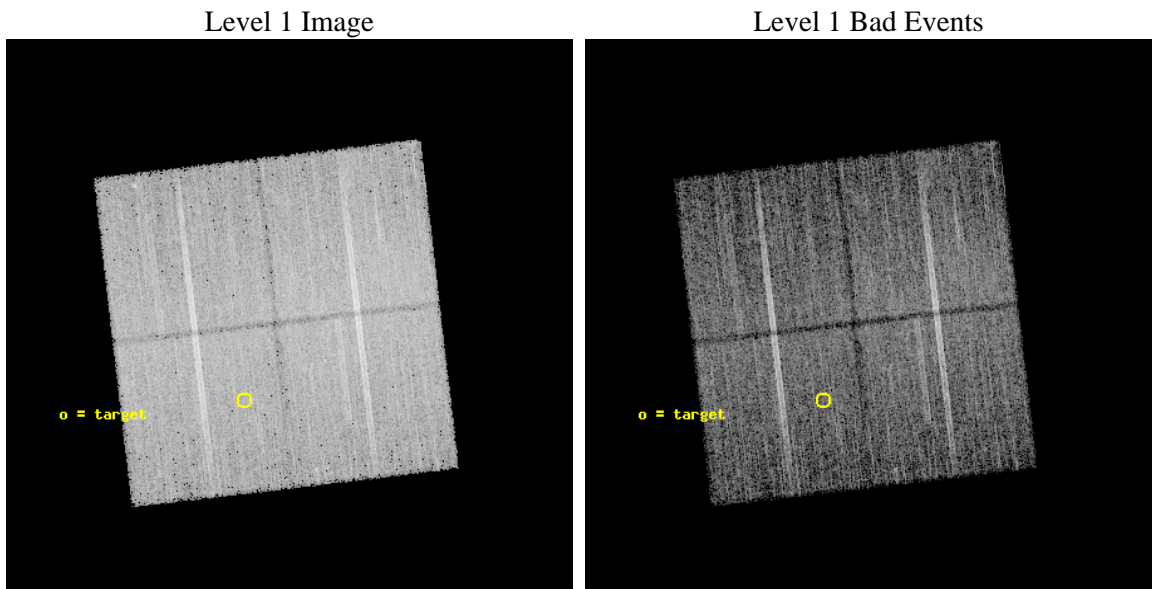
seq_num	600822	Sequence number
obs_id	11303	Observation id
title	The Deepest Stellar X-ray/optical Census of the Bulge	Proposal tit
observer	Dr William Clarkson	Principal investigator
object	SWEEPS_FIELD	Source name
dtycycle	0	&#160
cycle	P	events from which exps? Prim/Second/Both
ra_targ	269.735558	Observer's specified target RA [deg]
dec_targ	-29.18259	Observer's specified target Dec [deg]
ra_nom	269.69103217214	Nominal RA [deg]
dec_nom	-29.116359452866	Nominal Dec [deg]
roll_nom	83.250868529543	Nominal Roll [deg]
revision	2	Processing version of data
ontime	20125.159164488	Sum of GTIs [s]
livetime	19862.209144078	Livetime [s]
ontime0	20125.159164429	Sum of GTIs [s]
ontime1	20125.159164488	Sum of GTIs [s]
ontime2	20122.018223822	Sum of GTIs [s]
ontime3	20122.018154204	Sum of GTIs [s]
l2events	69983	Number of level 2 events



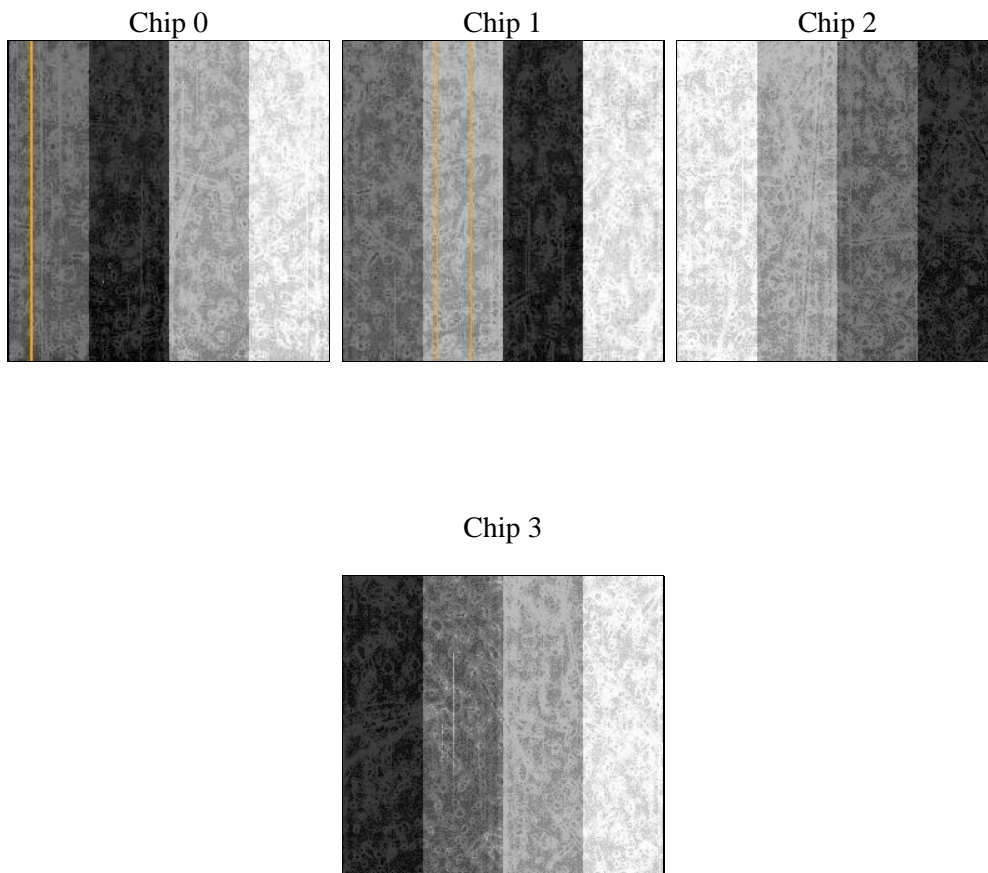
## 2 OBI

### 2.1 OBI

#### 2.1.1 Images



#### 2.1.2 Bias



### 2.1.3 Parameters

obi_num	0	Obi number	sched_exp_time	20000.000000	[s] Scheduled observation exposure time
ascdsver	8.4.5	Processing system revision	ontime	20125.159164488	Sum of GTIs [s]
caldsver	4.4.10	&#160	ontime0	20125.159164429	Sum of GTIs [s]
date	2012-06-25T10:52:14	Date and time of file creation	ontime1	20125.159164488	Sum of GTIs [s]
revision	2	Processing version of data	ontime2	20122.018223822	Sum of GTIs [s]
			ontime3	20122.018154204	Sum of GTIs [s]
			l1events	642634	Number of level 1 events

### 2.1.4 Events

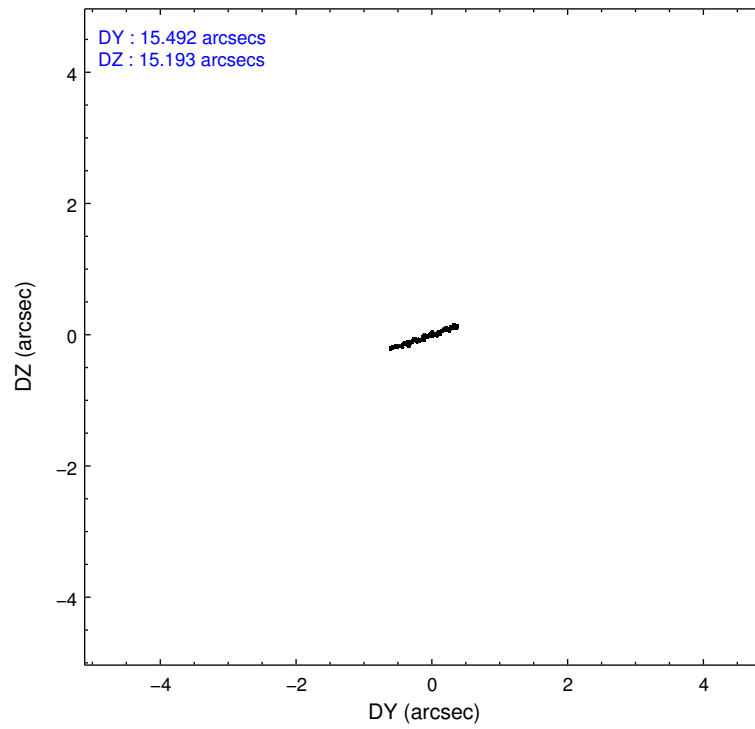
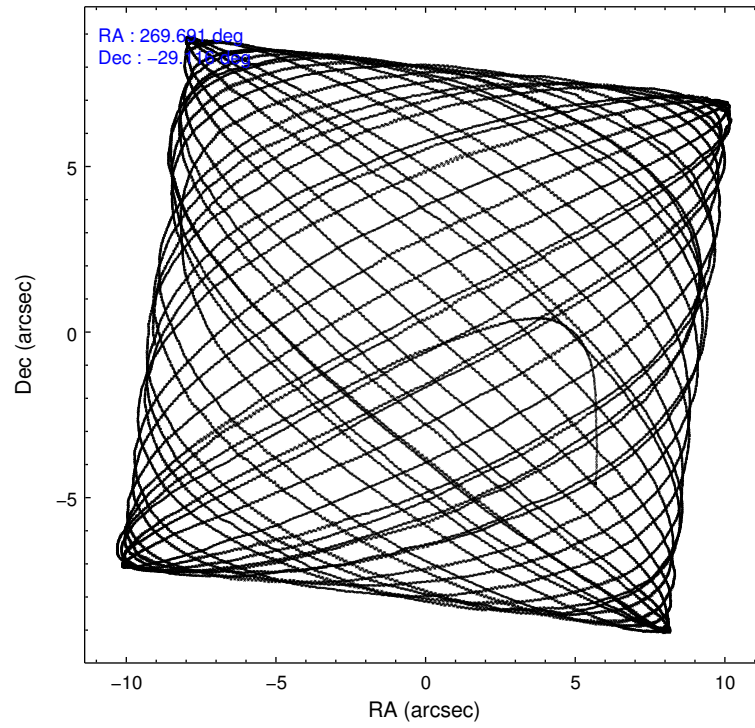
	ccd 0	ccd 1	ccd 2	ccd 3
level 1 events	153102	156376	171893	161263
rejected events	132657	134198	151976	141671
rejected %	86%	85%	88%	87%

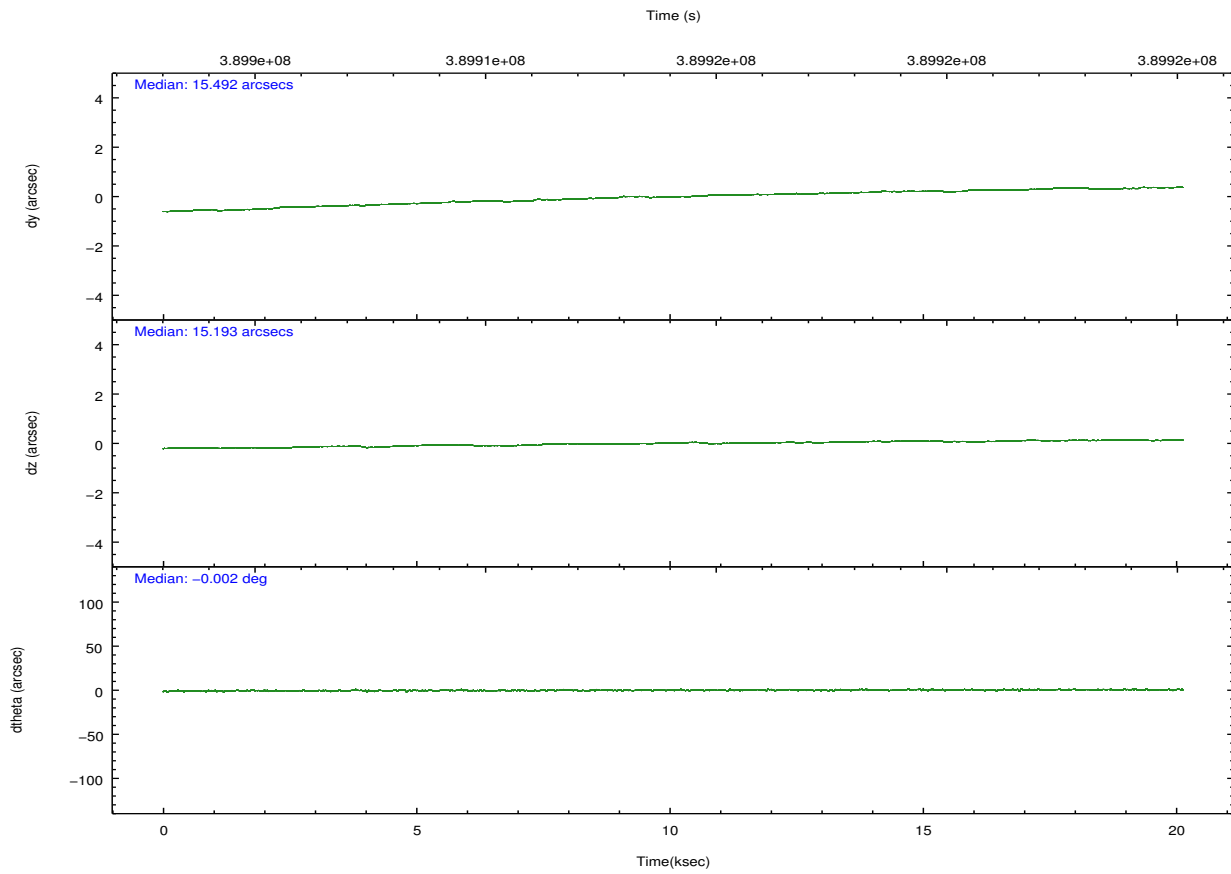
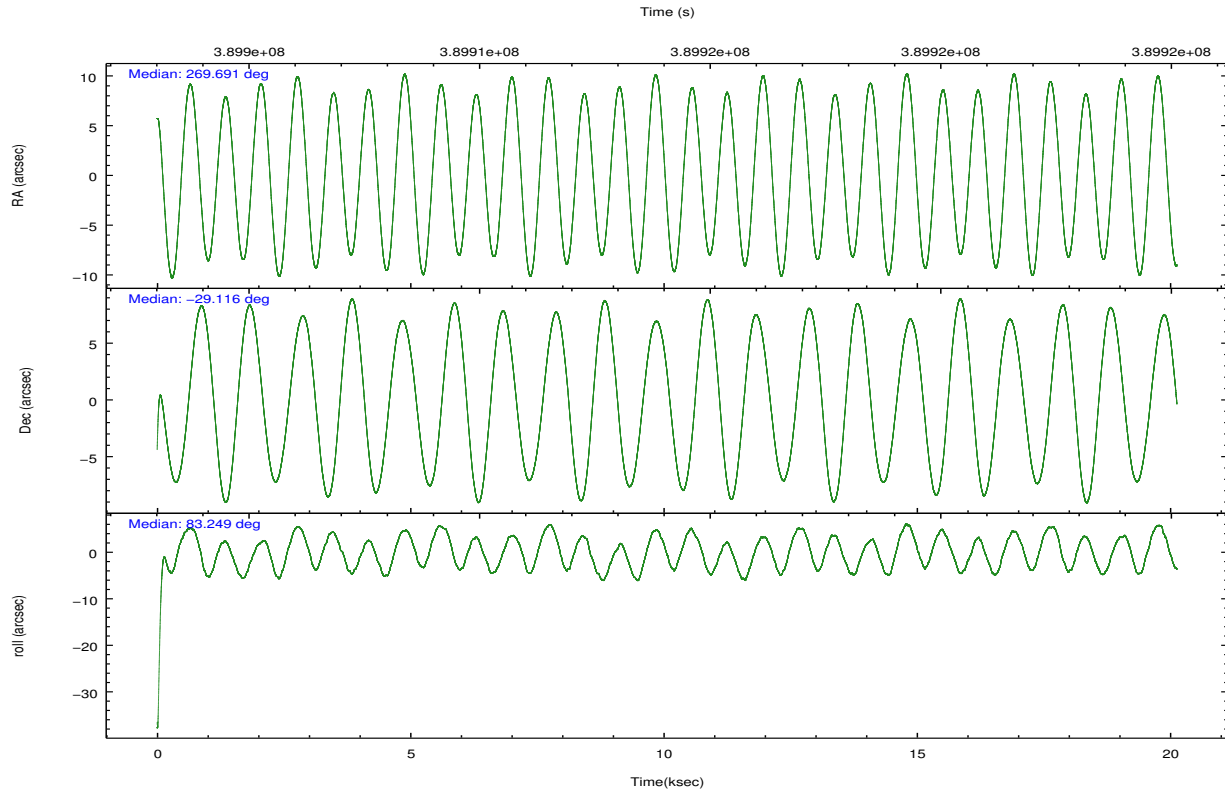
	ccd 0	ccd 1	ccd 2	ccd 3
grade 0 events	10756	11086	10096	9935
	7%	7%	5%	6%
grade 1 events	241	222	206	187
	0%	0%	0%	0%
grade 2 events	4831	5143	4657	4203
	3%	3%	2%	2%
grade 3 events	2142	2182	1930	1971
	1%	1%	1%	1%
grade 4 events	1881	2155	1895	1922
	1%	1%	1%	1%
grade 5 events	6493	7039	6266	7297
	4%	4%	3%	4%
grade 6 events	3614	4316	3328	3517
	2%	2%	1%	2%
grade 7 events	123144	124233	143515	132231
	80%	79%	83%	81%

## 2.2 Compared Parameters

Parameter	Planned	Actual	Parameter	Planned	Actual
Instrument	ACIS	ACIS	Obspar format version number	7	7
Detector	ACIS-0123	ACIS-0123	Obspar file type	PREDICTED	ACTUAL
Grating	NONE	NONE	Obspar update status	NONE	UPDATED
Data mode	VFAINT	VFAINT	Number of optional ACIS chips dropped	0	0
Observation mode	POINTING	POINTING	On-chip summing requested	N	N
[deg] Pointing RA	269.703591	269.691032172138	Subarray requested	NONE	NONE
[deg] Pointing Dec	-29.141584	-29.11635945286634	Alternating exposures requested	N	N
[deg] Pointing Roll	83.048324	83.25086852954337	[s] Primary exposure time	0.000000	3.1
[mm] SIM focus pos	-0.782348	-0.7809083437167272			
[mm] SIM defocus	0	0.001439871863259334			
[mm] SIM translation stage pos	-233.592463	-233.5874344608287			
[mm] SIM translation stage offset	0	-0.005018542100998502			
[s] Observation start time (MET)	389904126.184000	389902614.40544			
Observation start date	2010-05-10T18:41:00	2010-05-10T18:16:54			
[s] Observation end time (MET)	389924126.184000	389925397.0816			
Observation end date	2010-05-11T00:14:20	2010-05-11T00:36:37			
Read mode	TIMED	TIMED			

## 2.3 Aspect



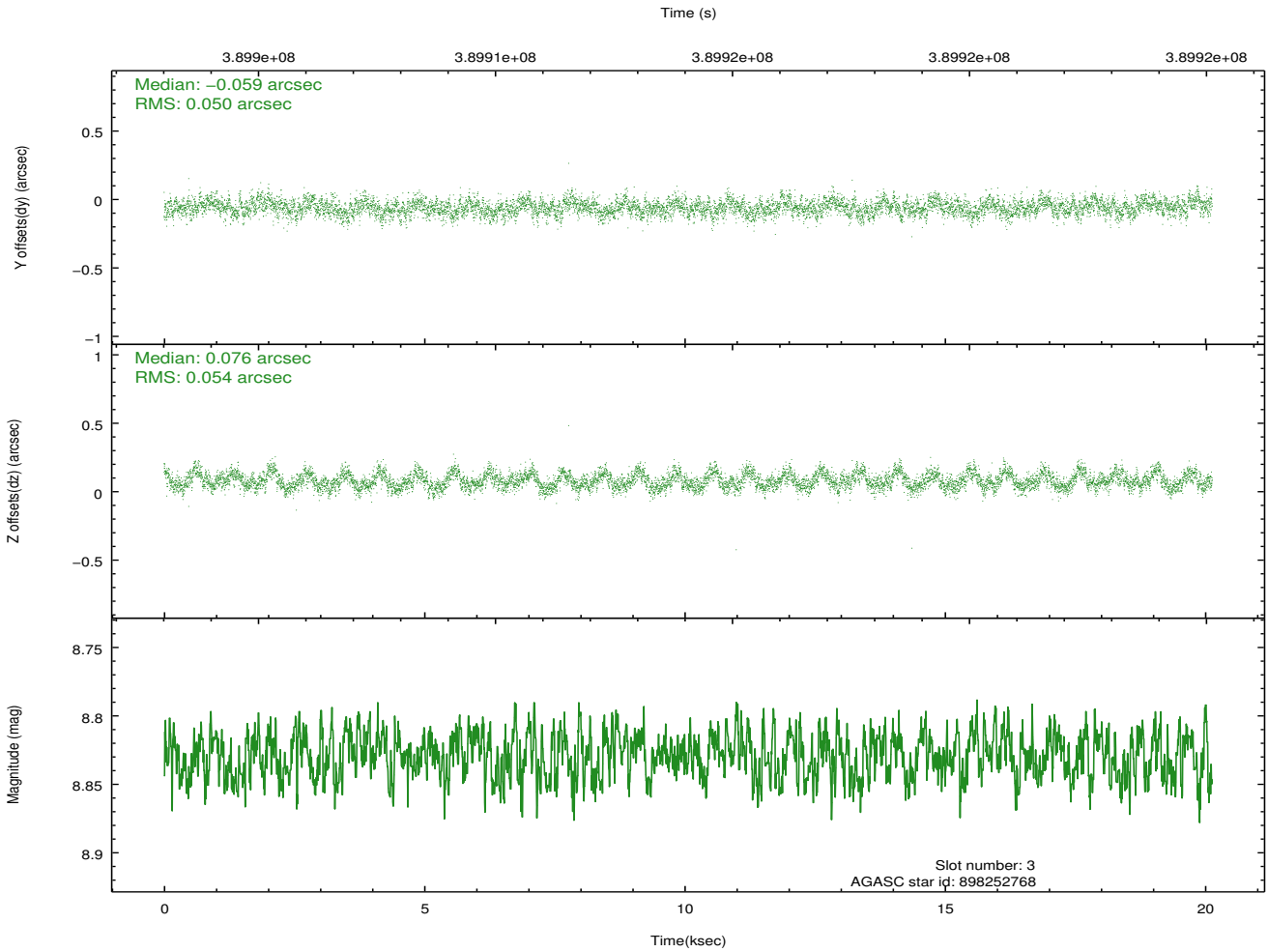
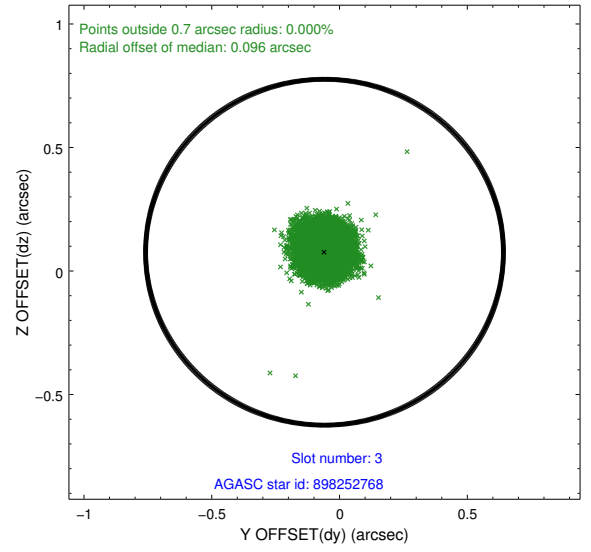
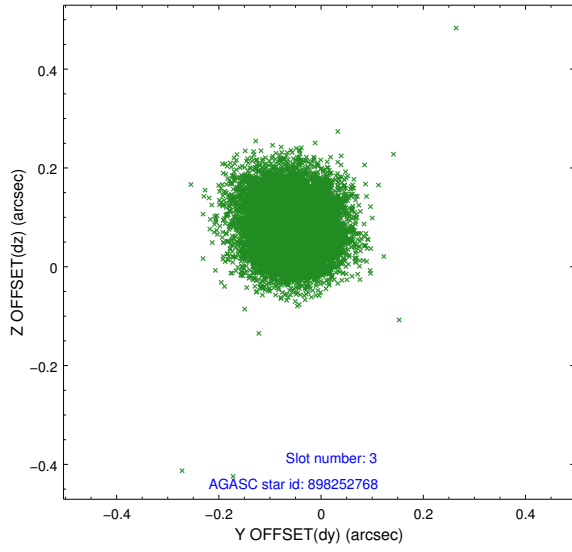


### Slot Statistics

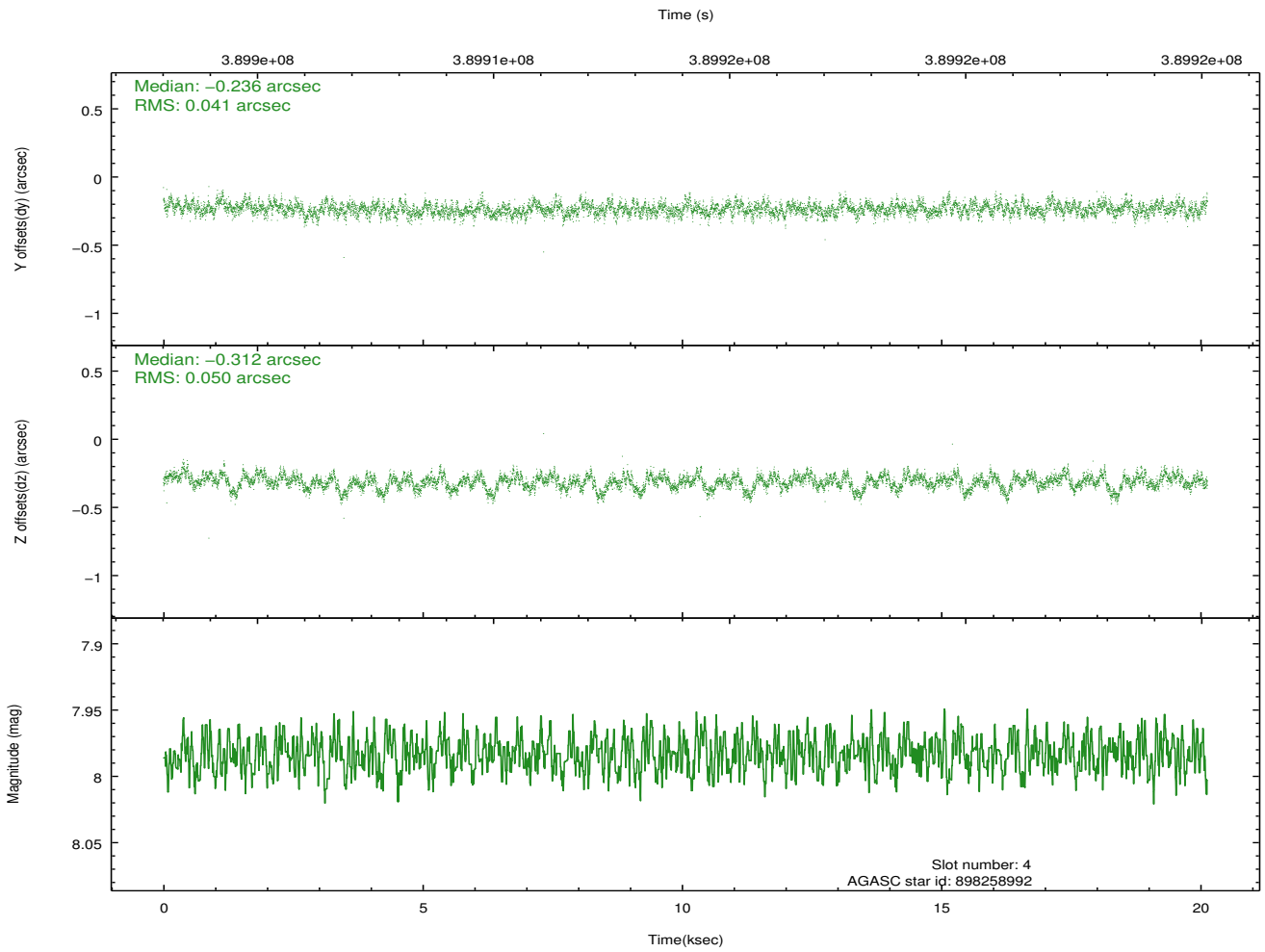
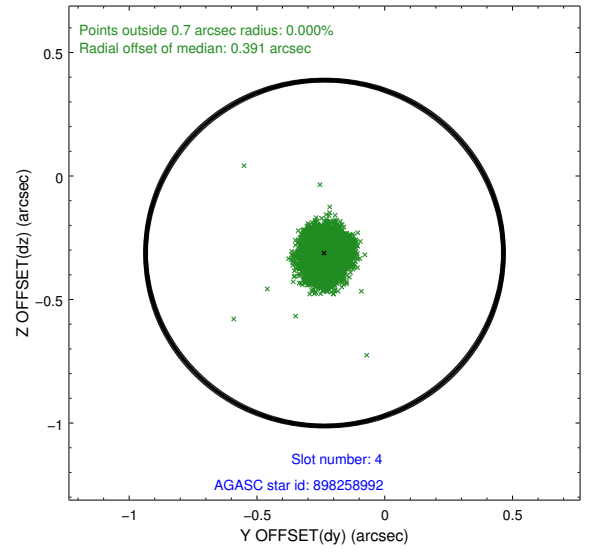
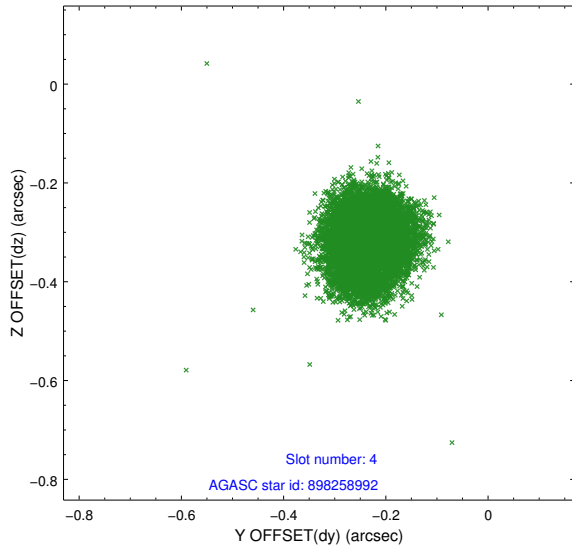
slot	status	id	mag	n_pts	med_dy	med_dz	dr1	dr2	ra	dec	mean_y	mean_z
0	FID	ACIS-I-1	7.05	4910	0.035	-0.018	0.011	0.019	0.000000	0.000000	924.04	-838.79
1	FID	ACIS-I-5	7.04	4911	-0.219	0.035	0.007	0.015	0.000000	0.000000	-1824.24	1058.63
2	FID	ACIS-I-6	7.05	4911	0.093	0.053	0.010	0.017	0.000000	0.000000	389.42	1703.38
3	GUIDE	898252768	8.83	9818	-0.059	0.076	0.079	0.126	269.910789	-28.705322	1637.92	-459.18
4	GUIDE	898258992	7.98	9819	-0.236	-0.312	0.068	0.111	269.435214	-28.570389	1937.79	1090.91
5	GUIDE	898391736	9.36	9757	-0.157	0.078	0.109	0.175	270.367313	-28.729065	1720.57	-1900.31
6	GUIDE	898398488	7.80	9822	0.216	0.031	0.066	0.104	270.116283	-29.824370	-2285.46	-1577.44
7	GUIDE	898402144	8.25	9817	0.234	0.129	0.070	0.113	270.208935	-29.851667	-2349.57	-1876.18

## 2.4 Star Slots

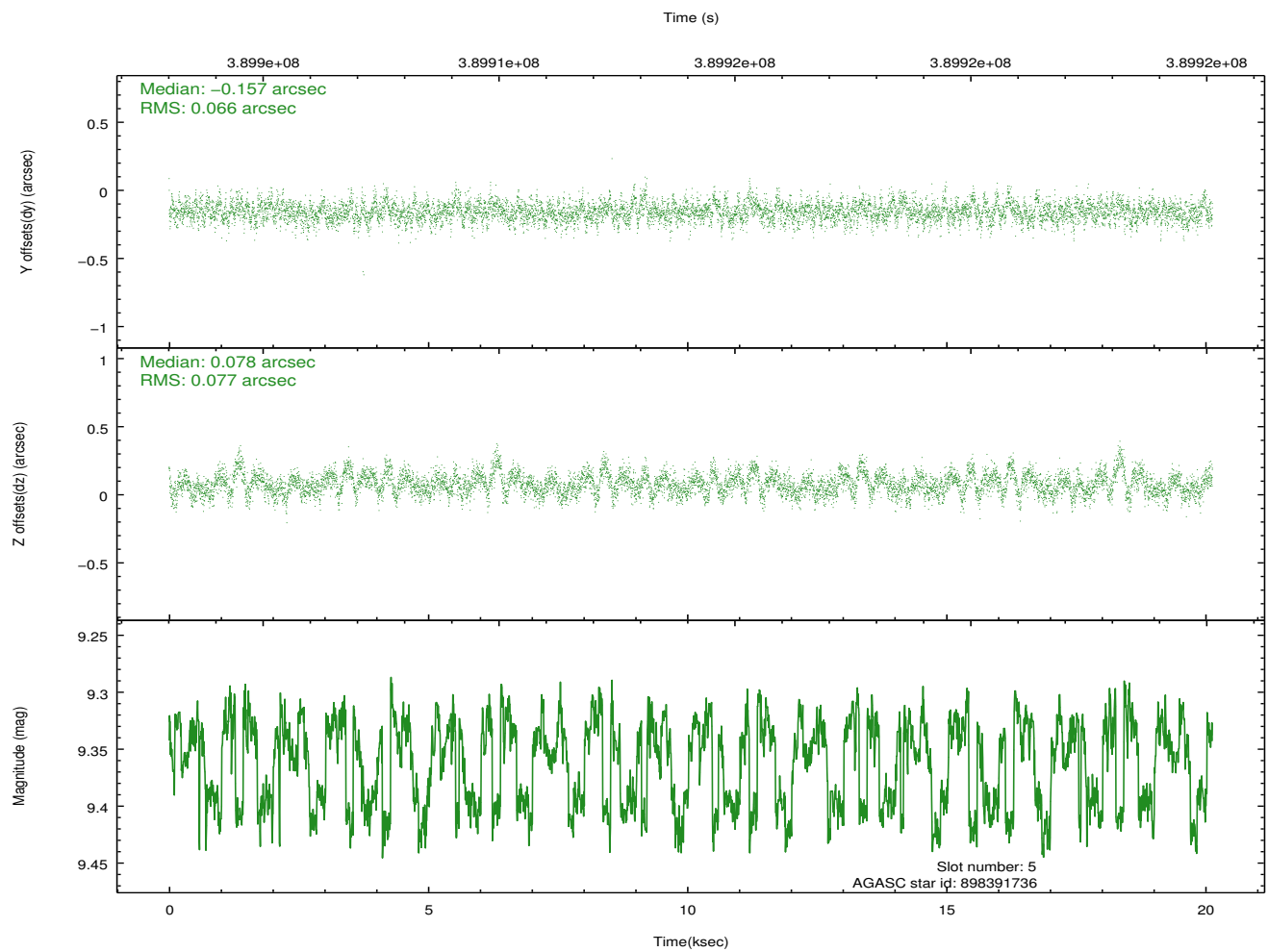
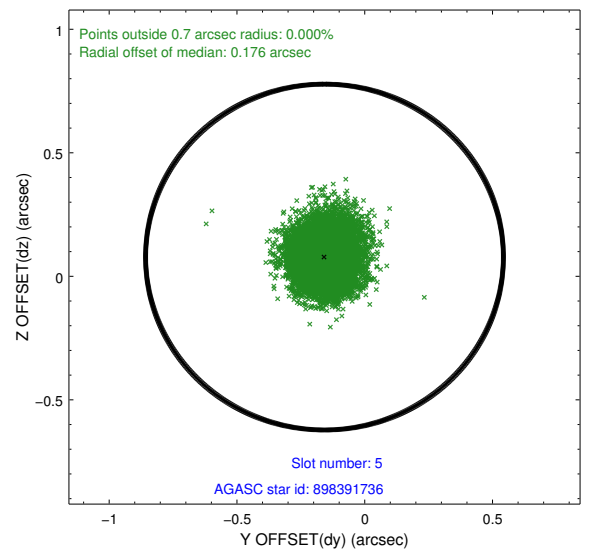
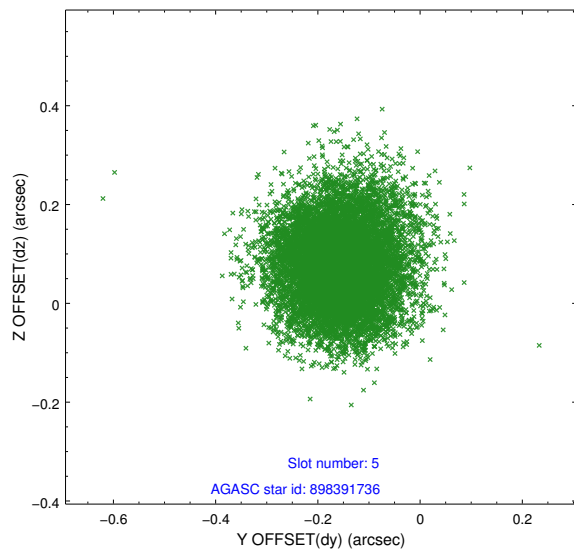
### 2.4.1 Slot 3



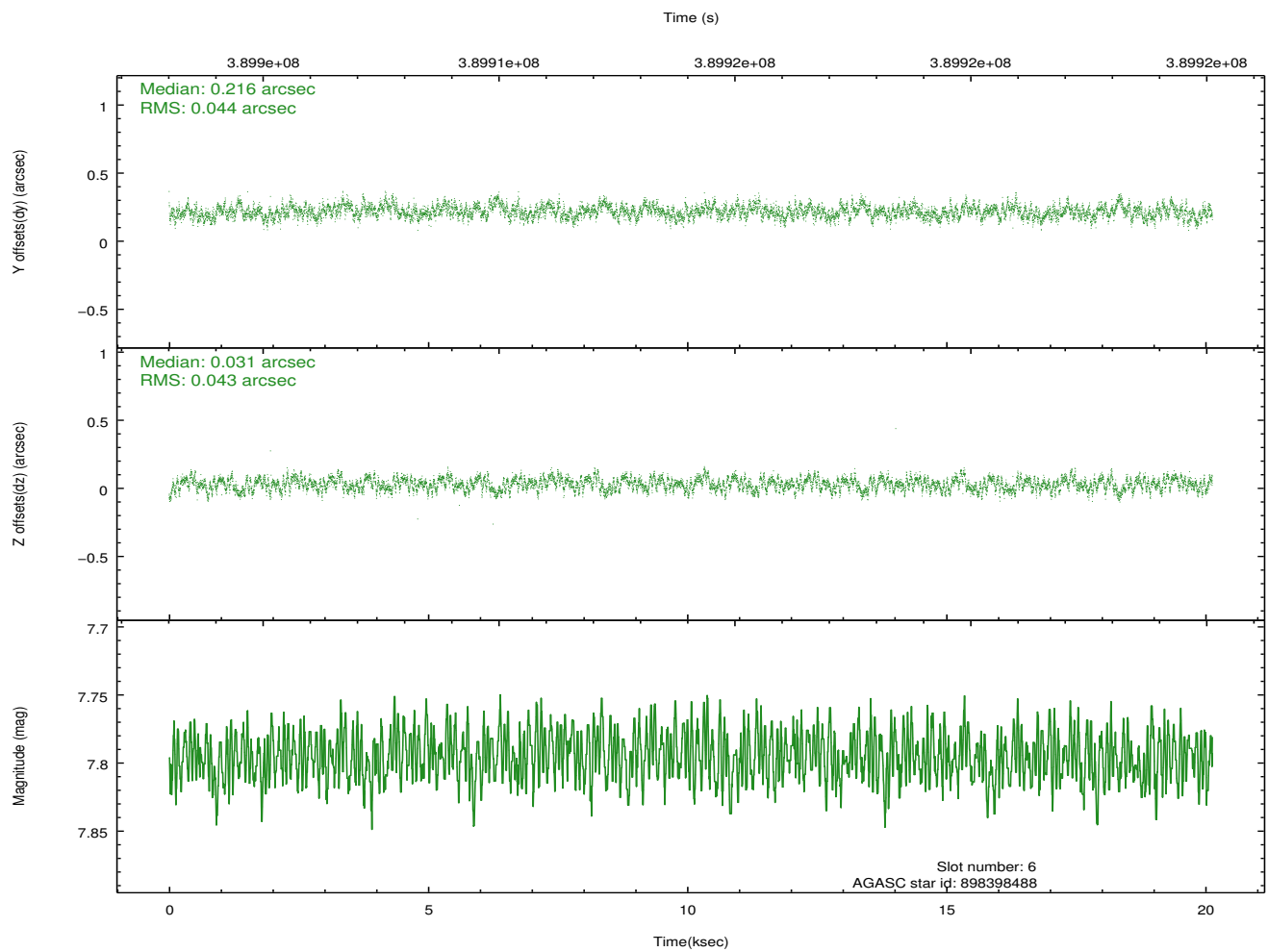
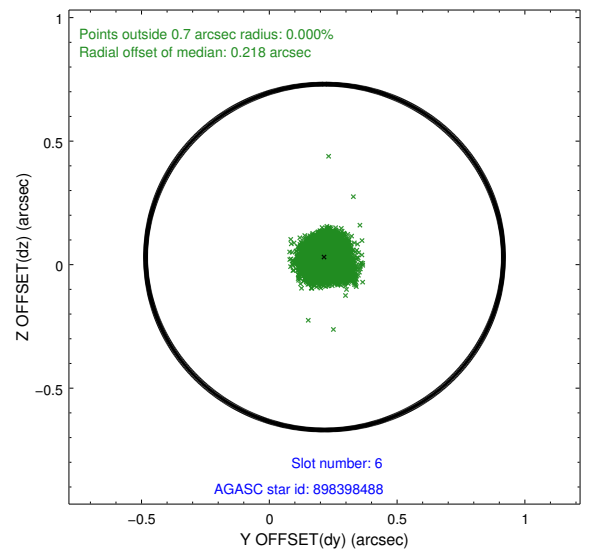
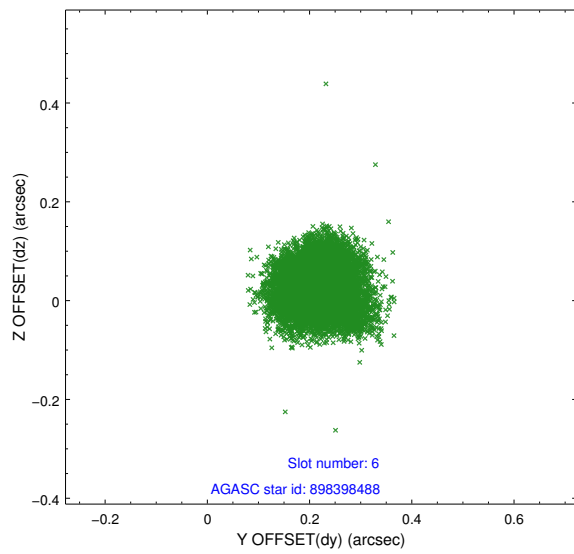
## 2.4.2 Slot 4



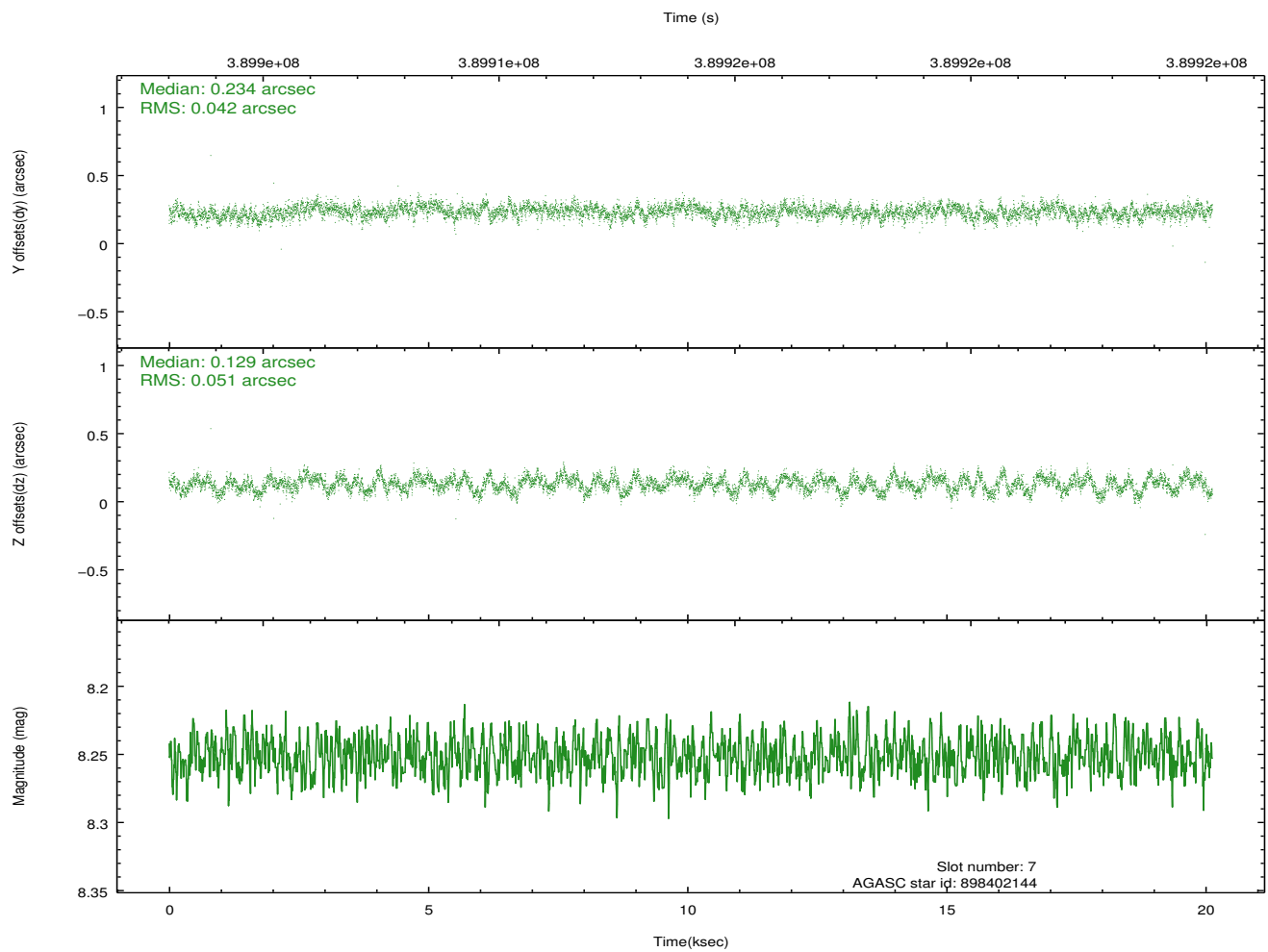
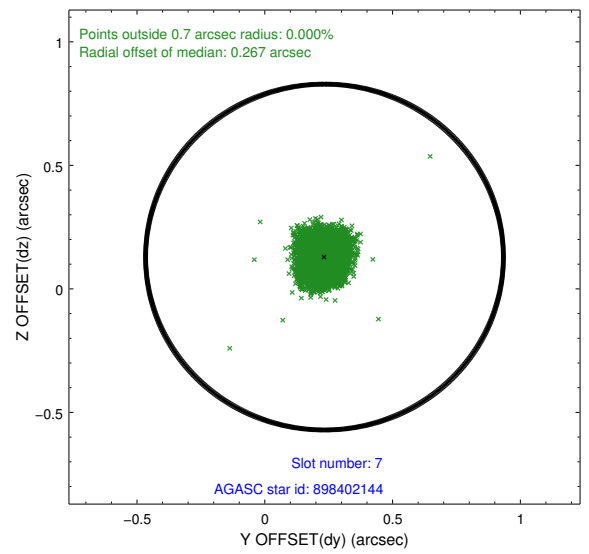
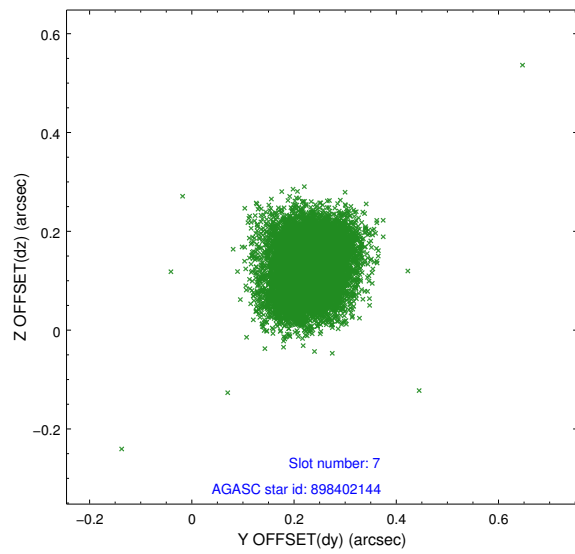
### 2.4.3 Slot 5



## 2.4.4 Slot 6

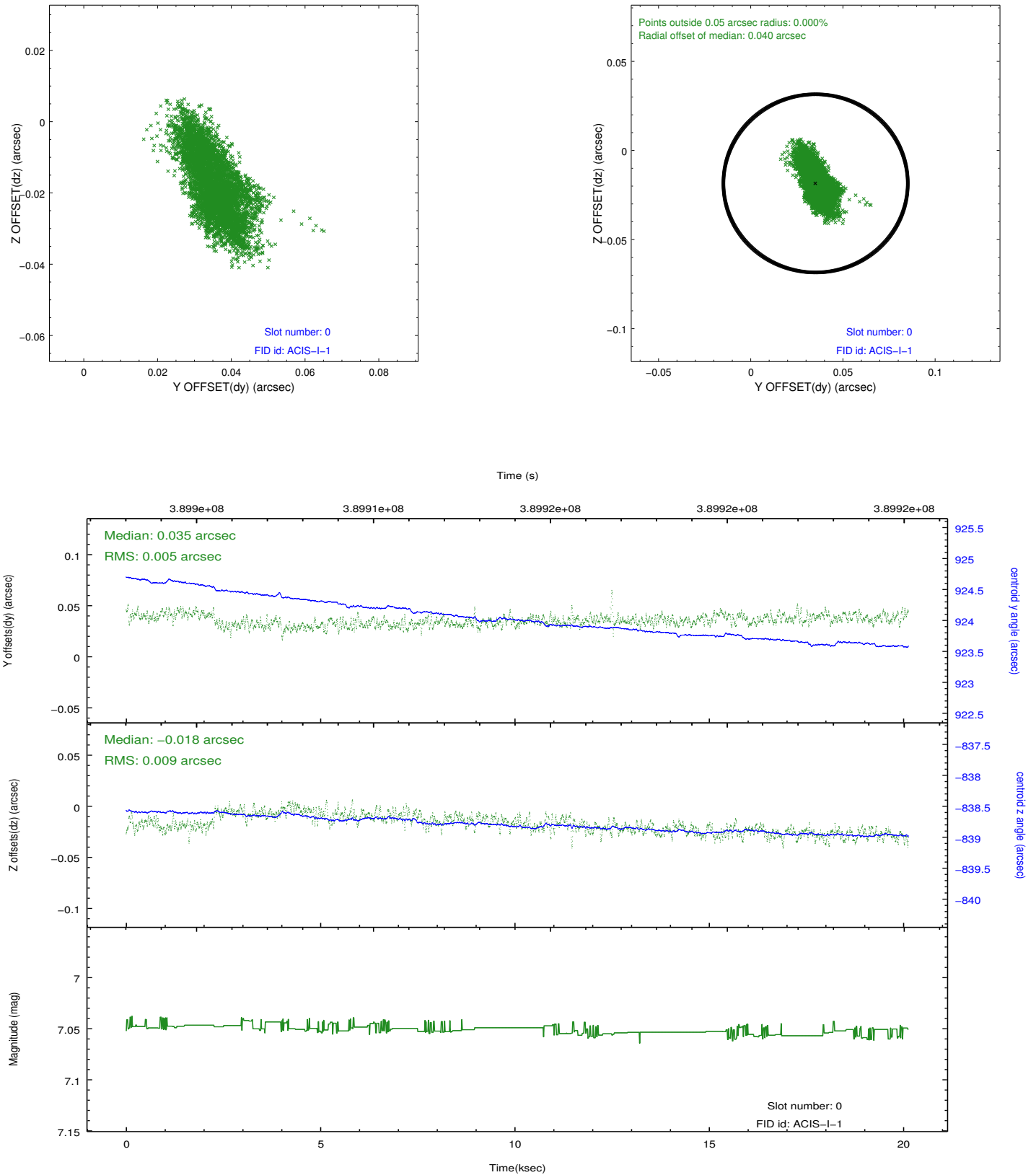


## 2.4.5 Slot 7

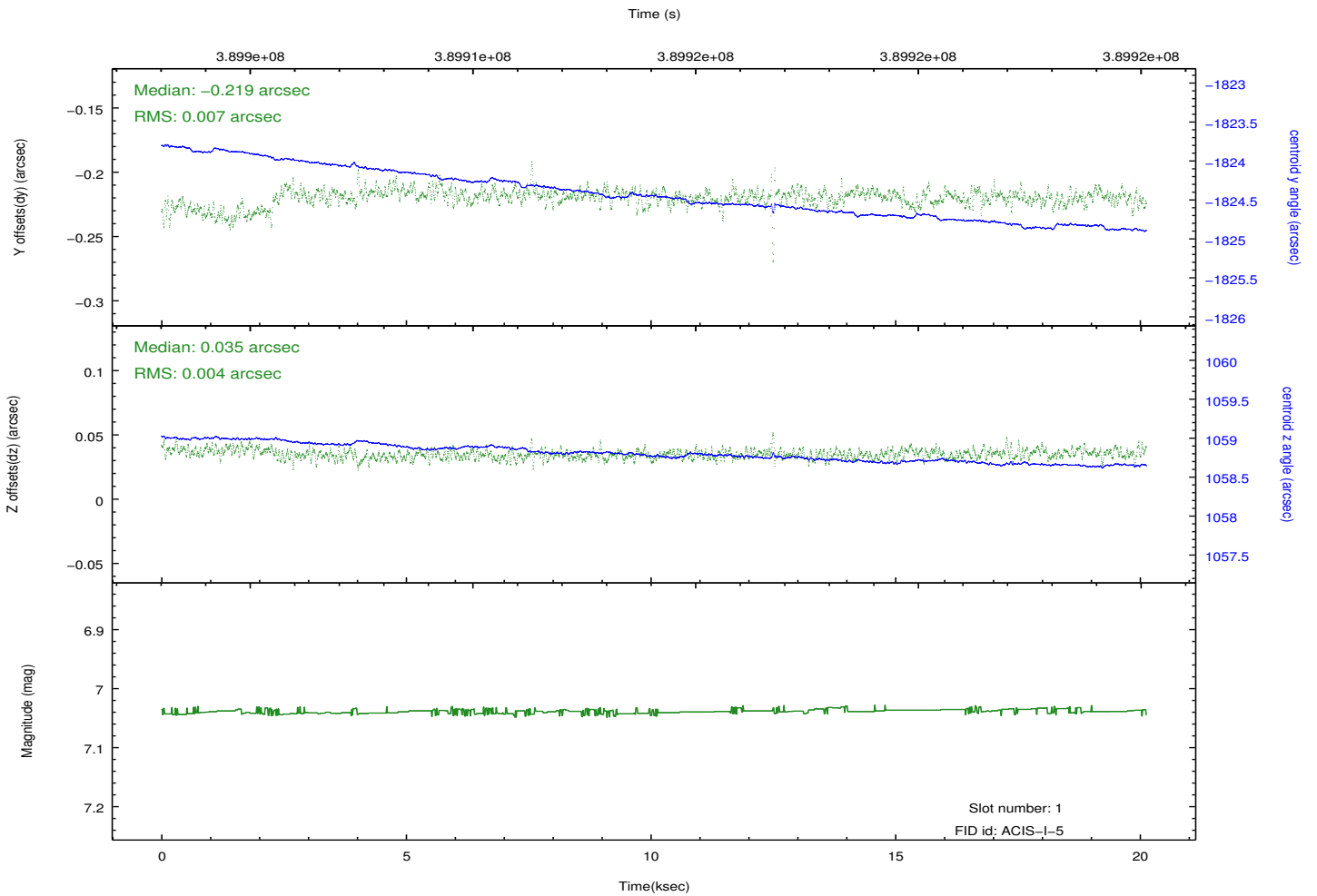
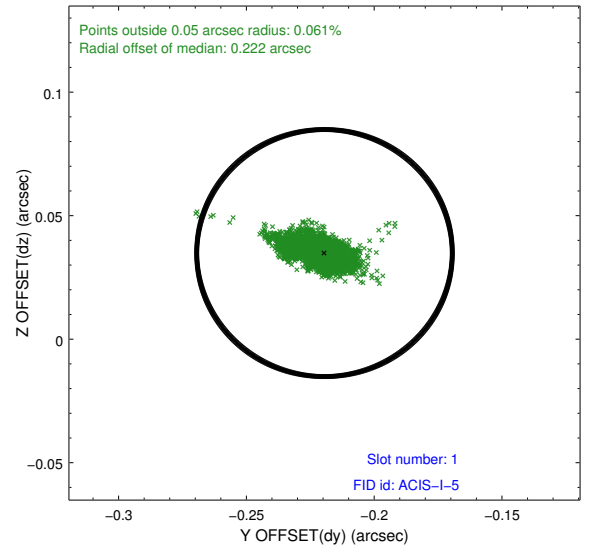
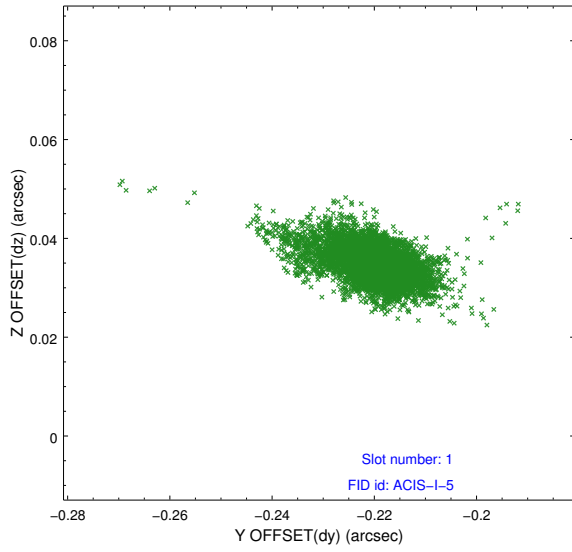


## 2.5 FID Slots

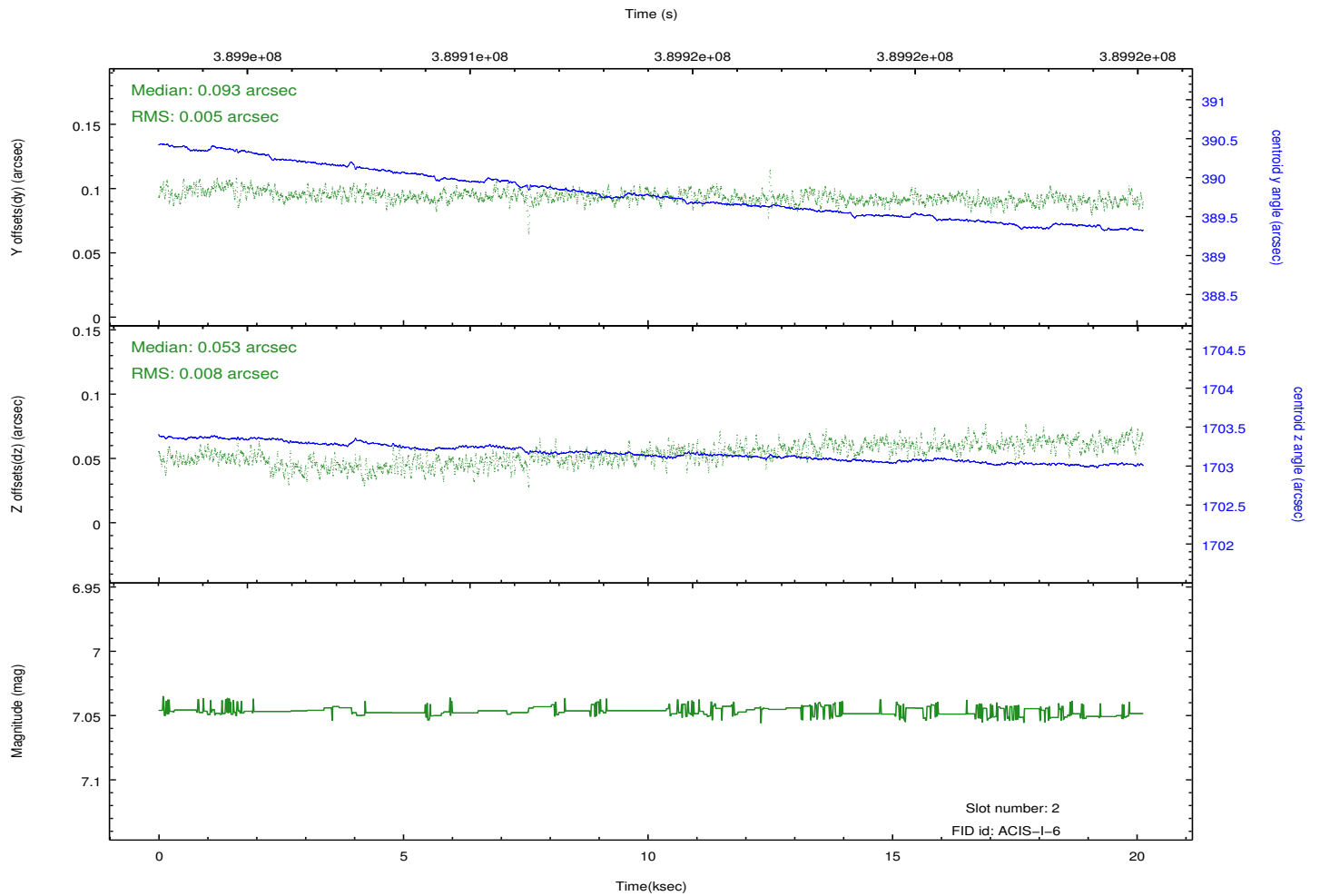
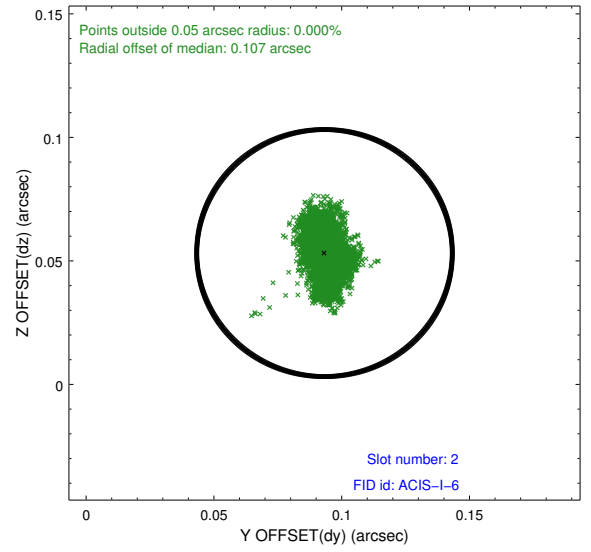
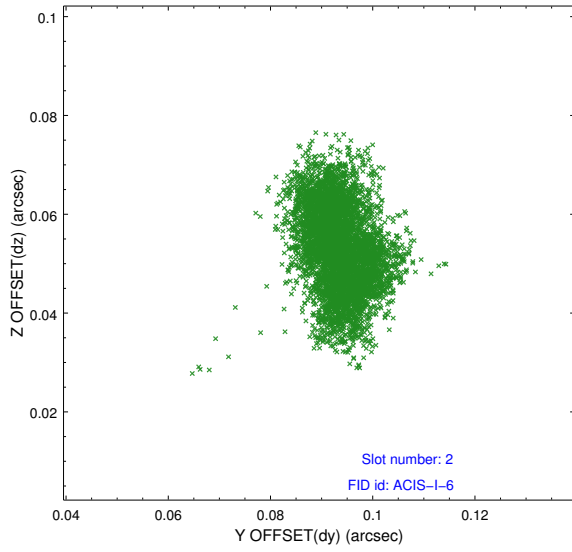
### 2.5.1 Slot 0



## 2.5.2 Slot 1



### 2.5.3 Slot 2



# A Summary

## A.1 Status

V&V Scientist	Jen Lauer
V&V Date (YYYY-MM-DD)	2012.07.02
V&V Edition	1
V&V Disposition and Status	OK
V&V Charge Time	20.125159164429

## A.2 Comments

Joint proposal: HST

===

Photometry requested but not used. Target too faint for tracking.