

V&V Reference Report

L2 ASCDS Version : 8.4.5

Observation 11433 - L2 Version 2
Chandra X-Ray Center

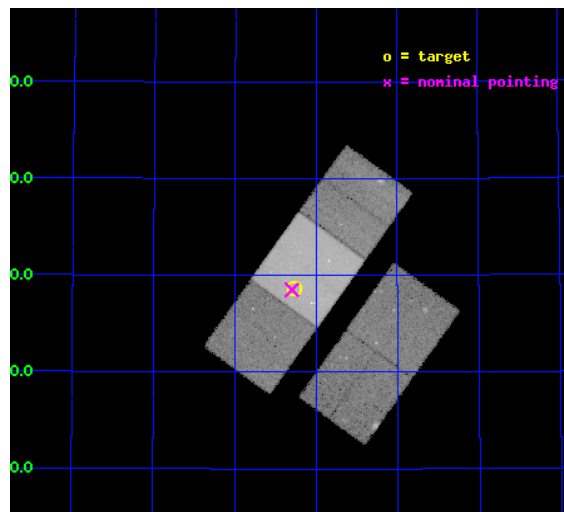
L2 Processing Date : Jul 4 2012

Contents

1	Front	2
2	OBI	3
2.1	OBI	3
2.1.1	Images	3
2.1.2	Bias	3
2.1.3	Parameters	4
2.1.4	Events	4
2.2	Compared Parameters	5
2.3	Aspect	6
2.4	Star Slots	9
2.4.1	Slot 3	9
2.4.2	Slot 4	10
2.4.3	Slot 5	11
2.4.4	Slot 6	12
2.4.5	Slot 7	13
2.5	FID Slots	14
2.5.1	Slot 0	14
2.5.2	Slot 1	15
2.5.3	Slot 2	16
A	Summary	17
A.1	Status	17
A.2	Comments	17

1 Front

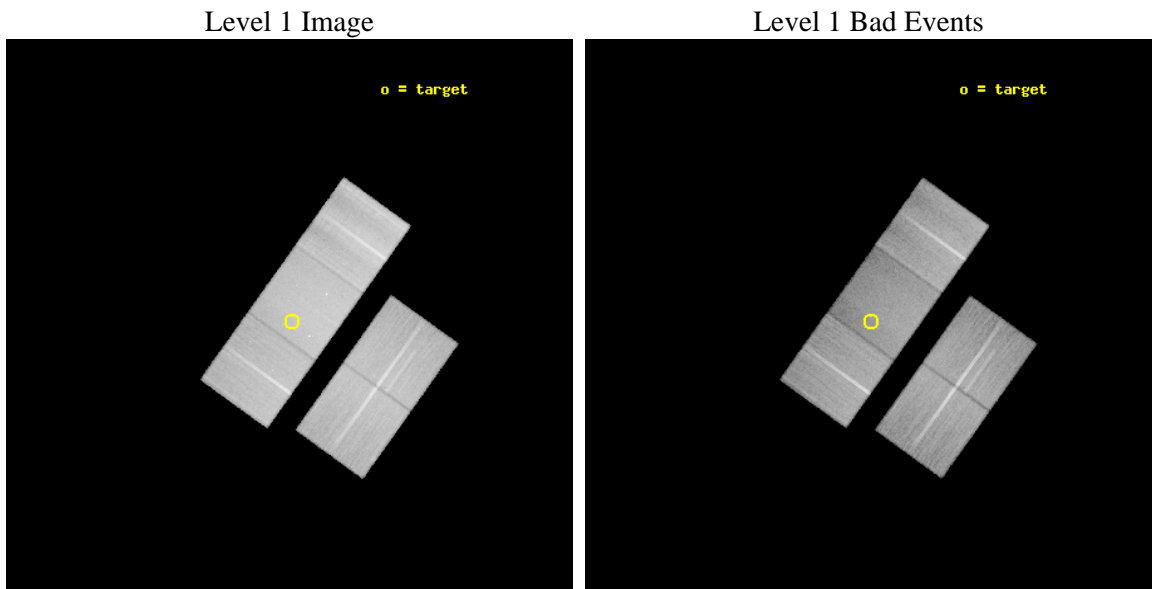
seq_num	702019	Sequence number
obs_id	11433	Observation id
title	Rapid Follow-Up Observations of Tidal Disruption Events Discovered by Pan-STARRS1	Proposal title
observer	Dr. Suvi Gezari	Principal investigator
object	TDE_PS1_1	Source name
dtcycle	0	
cycle	P	events from which exps? Prim/Second/Both
ra_targ	240.316879	Observer's specified target RA [deg]
dec_targ	55.477256	Observer's specified target Dec [deg]
ra_nom	240.32476174994	Nominal RA [deg]
dec_nom	55.475394349485	Nominal Dec [deg]
roll_nom	305.67747226287	Nominal Roll [deg]
revision	2	Processing version of data
ontime	46647.622890949	Sum of GTIs [s]
livetime	46038.137356399	Livetime [s]
ontime2	46641.176780403	Sum of GTIs [s]
ontime3	46641.258880258	Sum of GTIs [s]
ontime6	46647.581850946	Sum of GTIs [s]
ontime7	46647.622890949	Sum of GTIs [s]
ontime8	46647.499770939	Sum of GTIs [s]
l2events	320114	Number of level 2 events



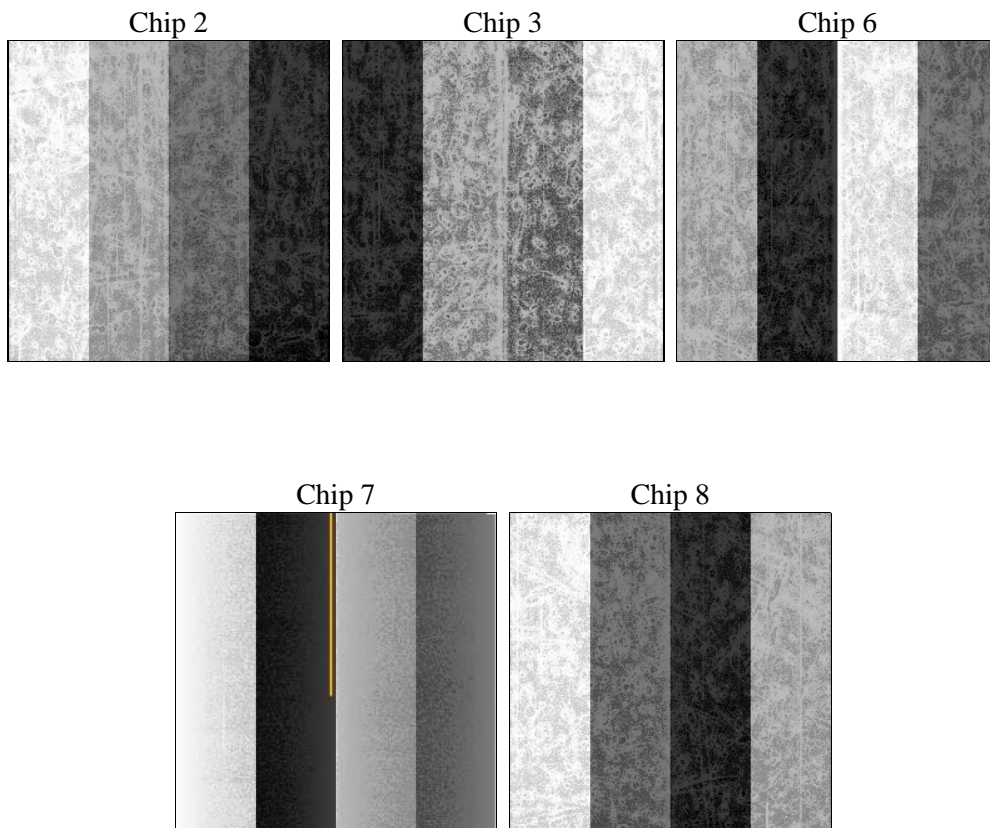
2 OBI

2.1 OBI

2.1.1 Images



2.1.2 Bias



2.1.3 Parameters

obi_num	0	Obi number	sched_exp_time	46610.000000	[s] Scheduled observation exposure time
ascdsver	8.4.5	Processing system revision	ontime	46647.622890949	Sum of GTIs [s]
caldbver	4.5.0	 	ontime2	46641.176780403	Sum of GTIs [s]
date	2012-07-04T17:53:18	Date and time of file creation	ontime3	46641.258880258	Sum of GTIs [s]
revision	2	Processing version of data	ontime6	46647.581850946	Sum of GTIs [s]
			ontime7	46647.622890949	Sum of GTIs [s]
			ontime8	46647.499770939	Sum of GTIs [s]
			l1events	1904774	Number of level 1 events

2.1.4 Events

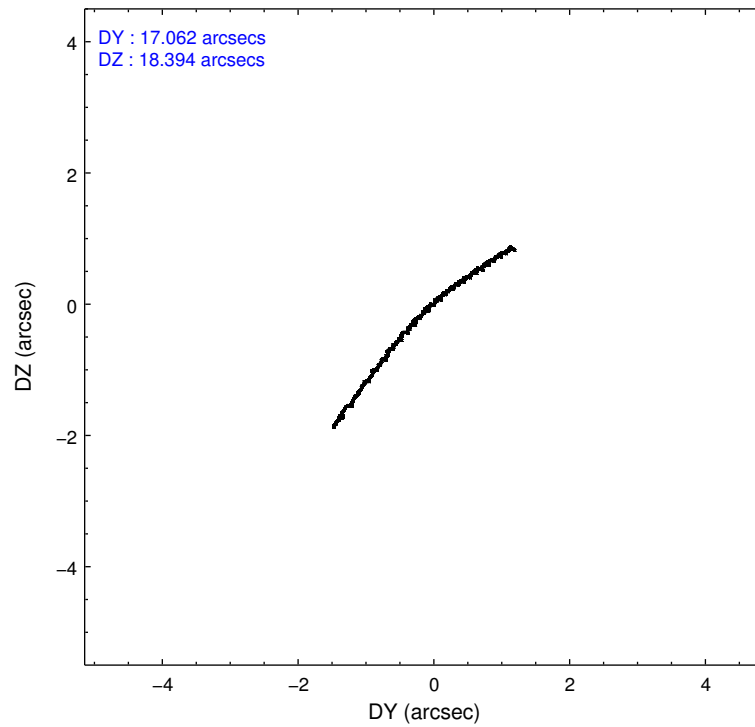
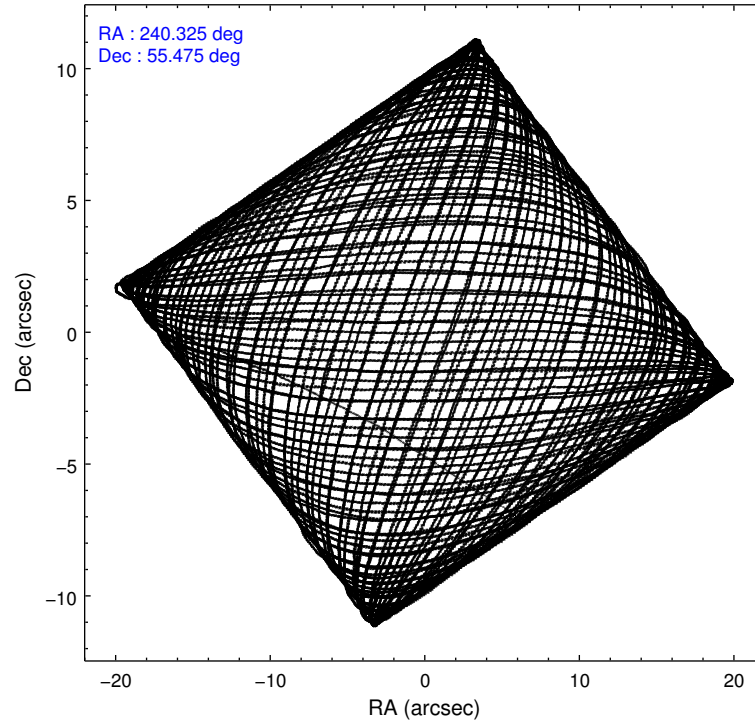
	ccd 2	ccd 3	ccd 6	ccd 7	ccd 8
level 1 events	342905	332226	353577	424347	451719
rejected events	306255	297117	314474	233742	331348
rejected %	89%	89%	88%	55%	73%

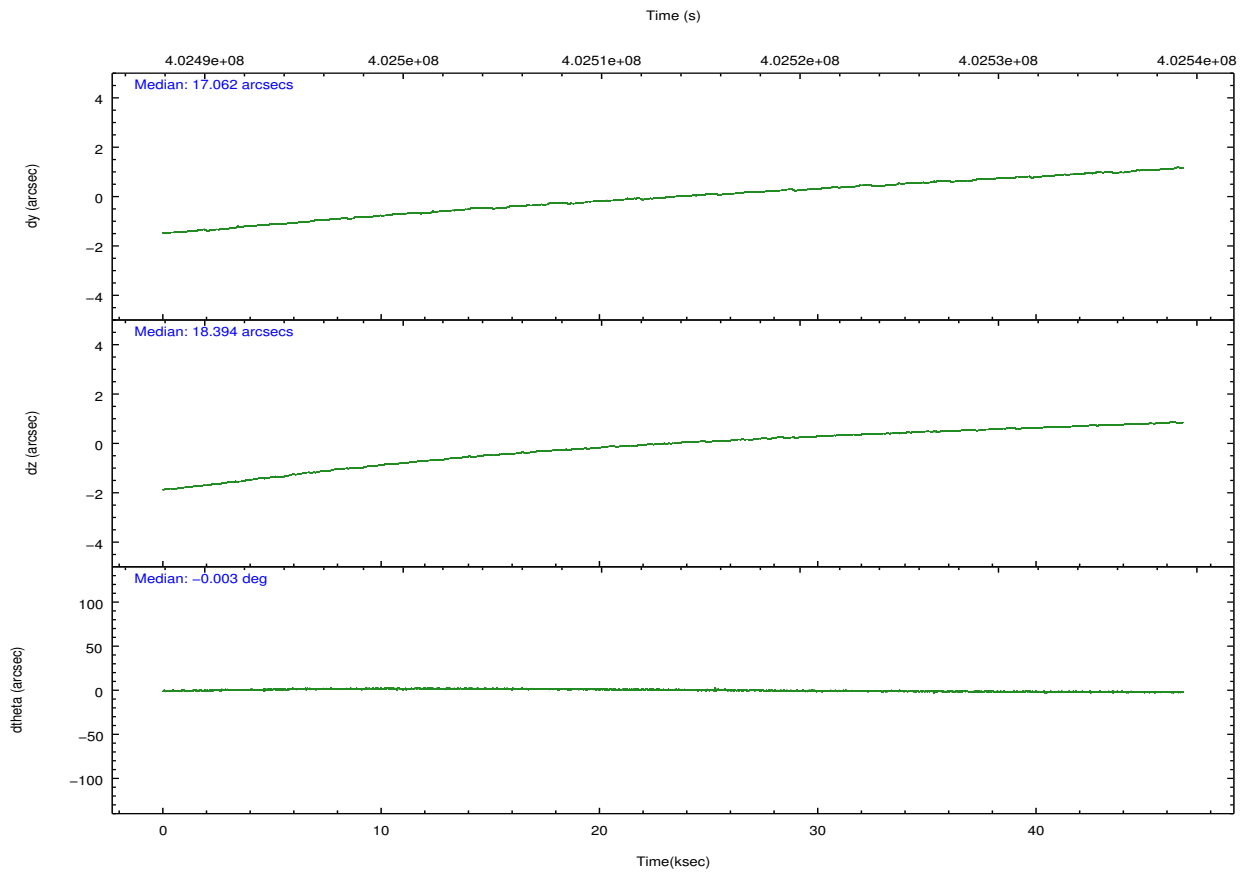
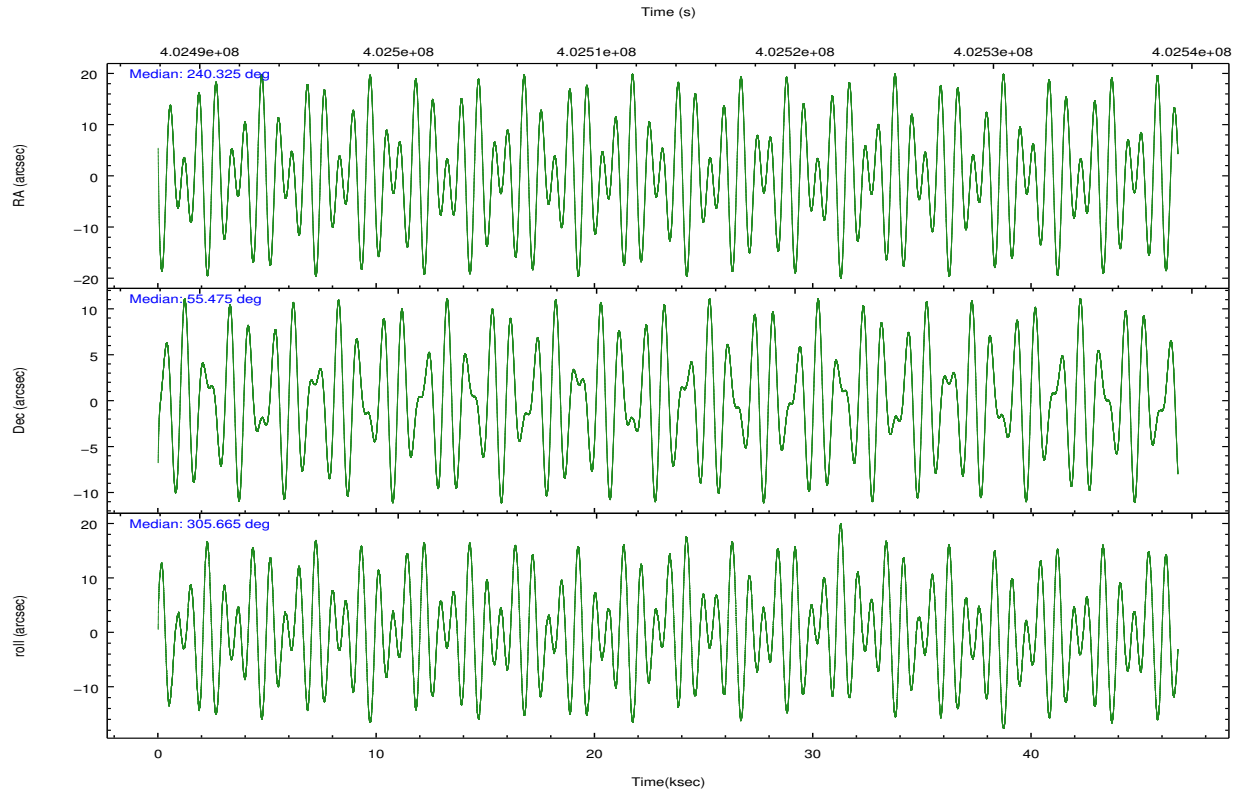
	ccd 2	ccd 3	ccd 6	ccd 7	ccd 8
grade 0 events	13674	12572	13829	18323	36235
	3%	3%	3%	4%	8%
grade 1 events	208	216	163	581	373
	0%	0%	0%	0%	0%
grade 2 events	8648	7752	8609	39528	27911
	2%	2%	2%	9%	6%
grade 3 events	3641	3880	4080	16897	12502
	1%	1%	1%	3%	2%
grade 4 events	3898	3776	4125	16693	11888
	1%	1%	1%	3%	2%
grade 5 events	12497	15787	15690	43808	22853
	3%	4%	4%	10%	5%
grade 6 events	6794	7136	8466	99193	31846
	1%	2%	2%	23%	7%
grade 7 events	293545	281107	298615	189324	308111
	85%	84%	84%	44%	68%

2.2 Compared Parameters

Parameter	Planned	Actual	Parameter	Planned	Actual
Instrument	ACIS	ACIS	Obspar format version number	7	7
Detector	ACIS-23678	ACIS-23678	Obspar file type	PREDICTED	ACTUAL
Grating	NONE	NONE	Obspar update status	NONE	UPDATED
Data mode	VFAINT	VFAINT	Number of optional ACIS chips dropped	0	0
Observation mode	POINTING	POINTING	On-chip summing requested	N	N
[deg] Pointing RA	240.280539	240.3247617499404	Subarray requested	NONE	NONE
[deg] Pointing Dec	55.486302	55.47539434948531	Alternating exposures requested	N	N
[deg] Pointing Roll	305.557285	305.677472262874	[s] Primary exposure time	0.000000	3.1
[mm] SIM focus pos	-0.684267	-0.6828225247311905			
[mm] SIM defocus	0	0.001444936568705701			
[mm] SIM translation stage pos	-190.132523	-190.1400660498719			
[mm] SIM translation stage offset	0	0.00754346686406393			
[s] Observation start time (MET)	402490360.184000	402488637.7114			
Observation start date	2010-10-03T10:51:34	2010-10-03T10:23:57			
[s] Observation end time (MET)	402536970.184000	402537956.10144			
Observation end date	2010-10-03T23:48:24	2010-10-04T00:05:56			
Read mode	TIMED	TIMED			

2.3 Aspect



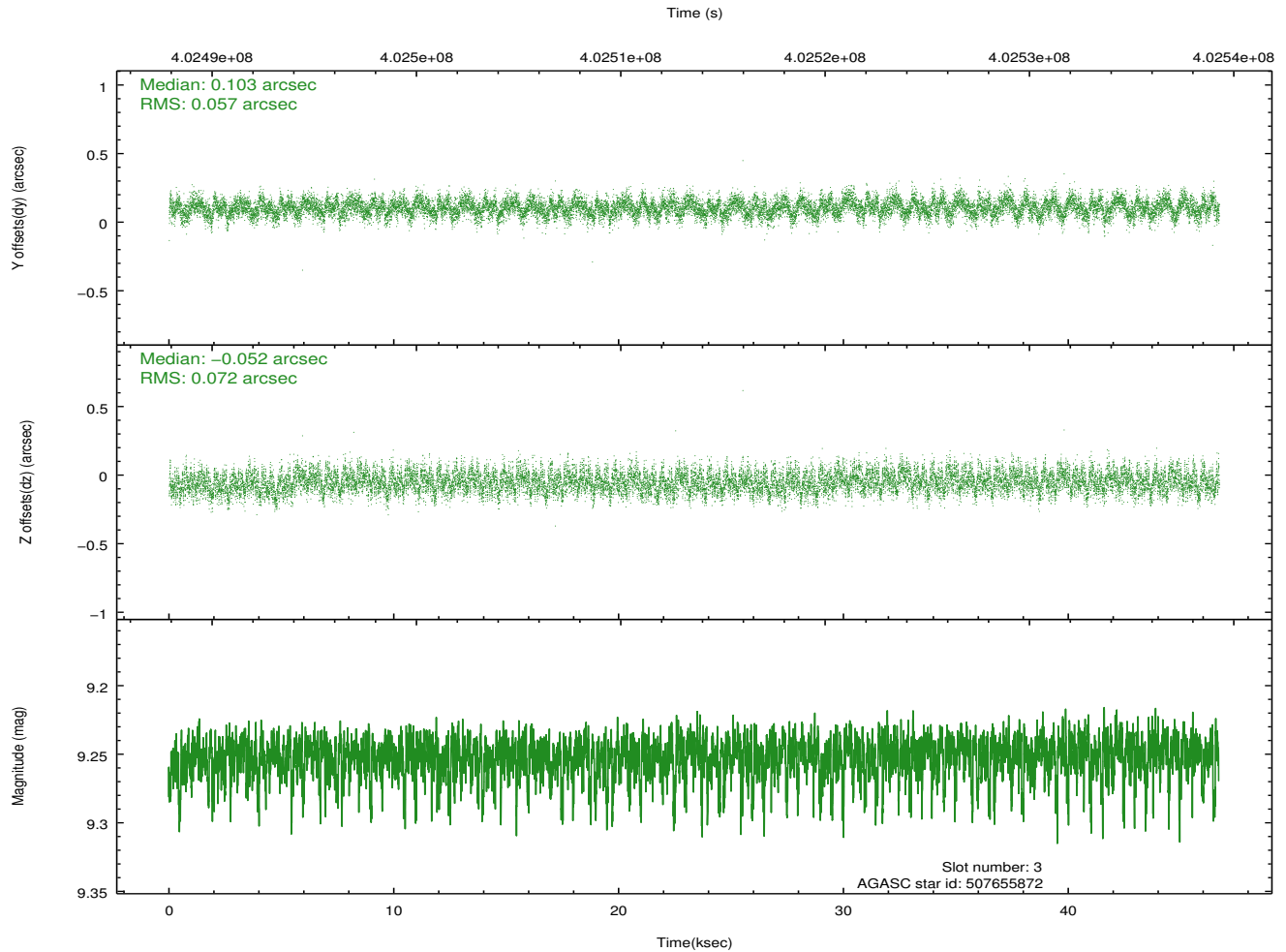
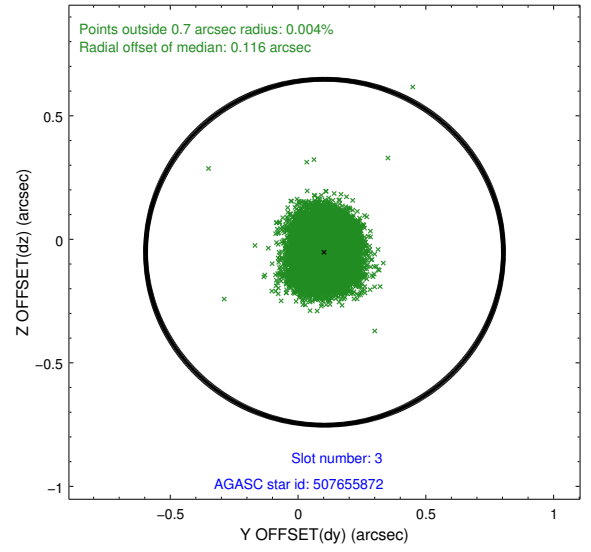
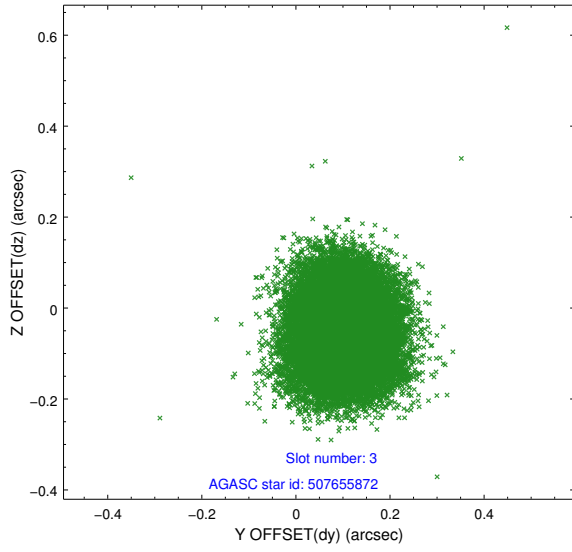


Slot Statistics

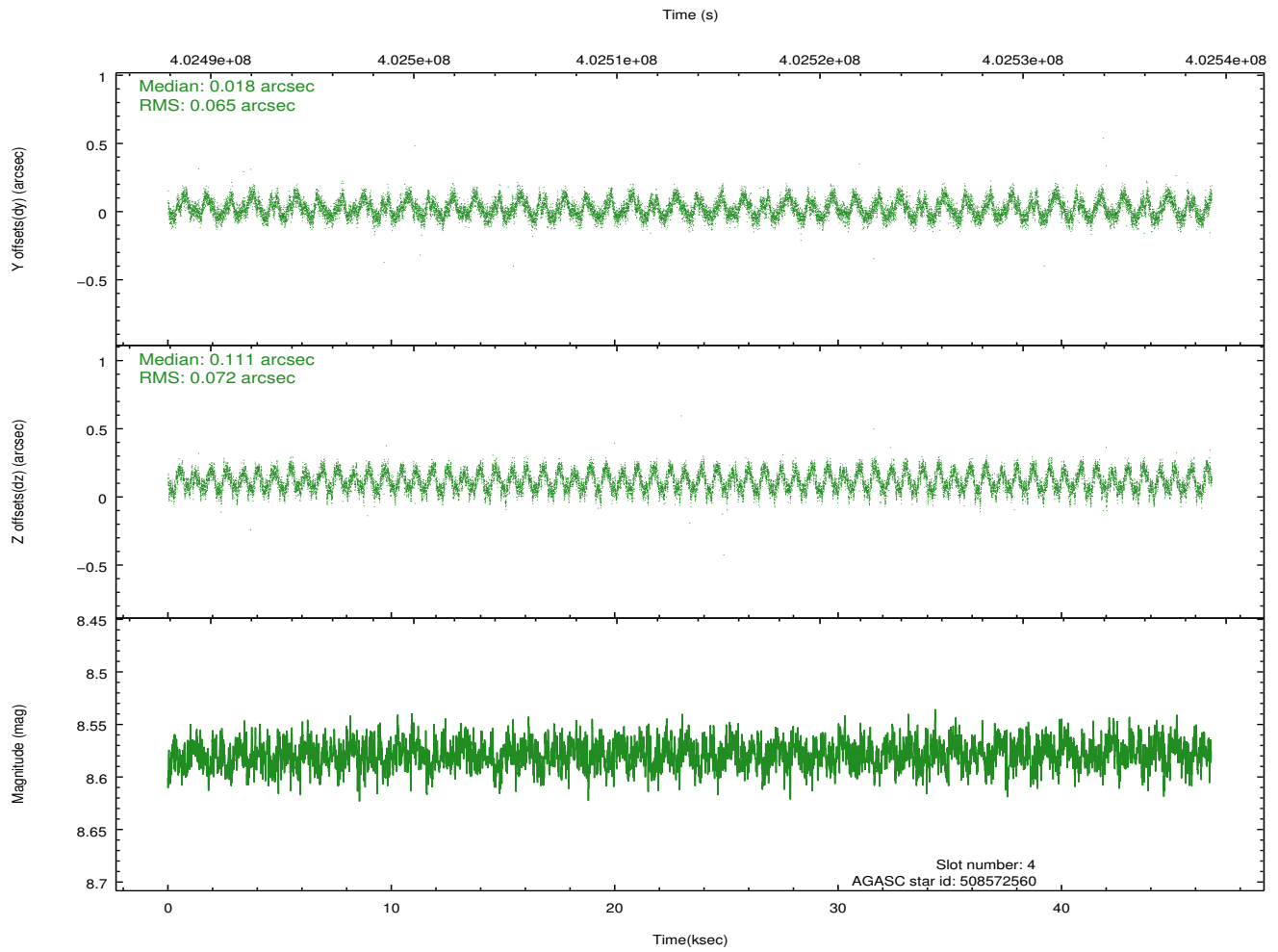
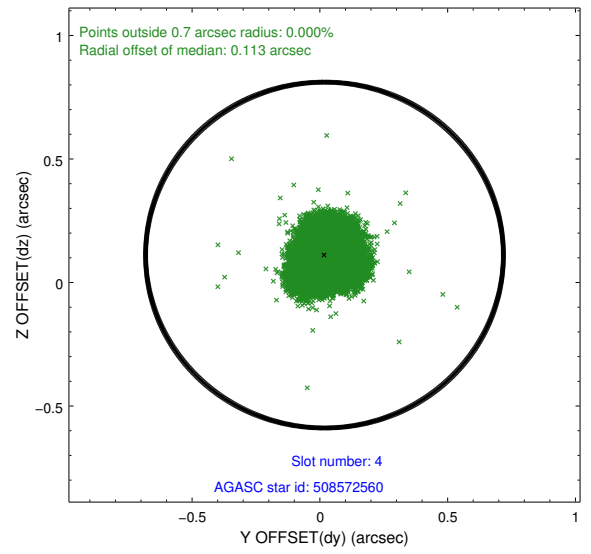
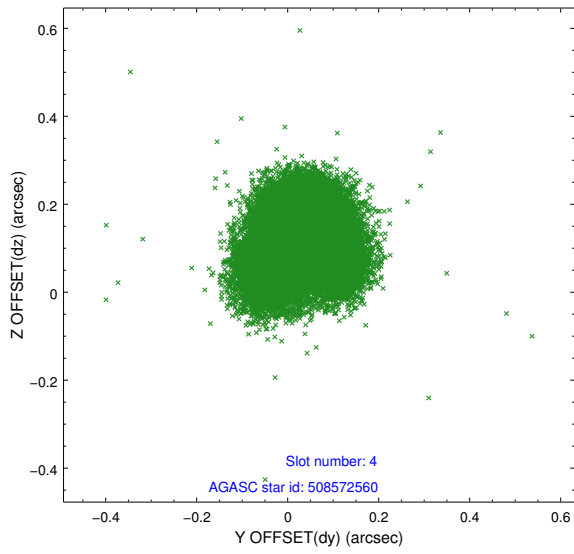
slot	status	id	mag	n_pts	med_dy	med_dz	dr1	dr2	ra	dec	mean_y	mean_z
0	FID	ACIS-S-2	6.88	11394	-0.071	-0.037	0.013	0.020	0.000000	0.000000	-770.12	-1739.71
1	FID	ACIS-S-4	6.96	11394	0.178	0.045	0.023	0.037	0.000000	0.000000	2143.44	168.82
2	FID	ACIS-S-5	7.00	11395	-0.137	0.000	0.019	0.029	0.000000	0.000000	-1823.01	162.50
3	GUIDE	507655872	9.25	22763	0.103	-0.052	0.098	0.157	239.599335	55.267427	-176.19	-1590.96
4	GUIDE	508572560	8.58	22775	0.018	0.111	0.106	0.153	240.550055	55.174629	1234.61	-200.75
5	GUIDE	508572920	8.97	22774	-0.109	0.075	0.089	0.140	240.288831	55.302160	549.32	-371.49
6	GUIDE	508572680	9.23	22768	-0.171	0.035	0.114	0.181	241.101280	55.853448	-119.03	2123.53
7	GUIDE	508573872	8.67	22773	0.158	-0.173	0.088	0.140	241.738816	55.437101	1850.48	2338.25

2.4 Star Slots

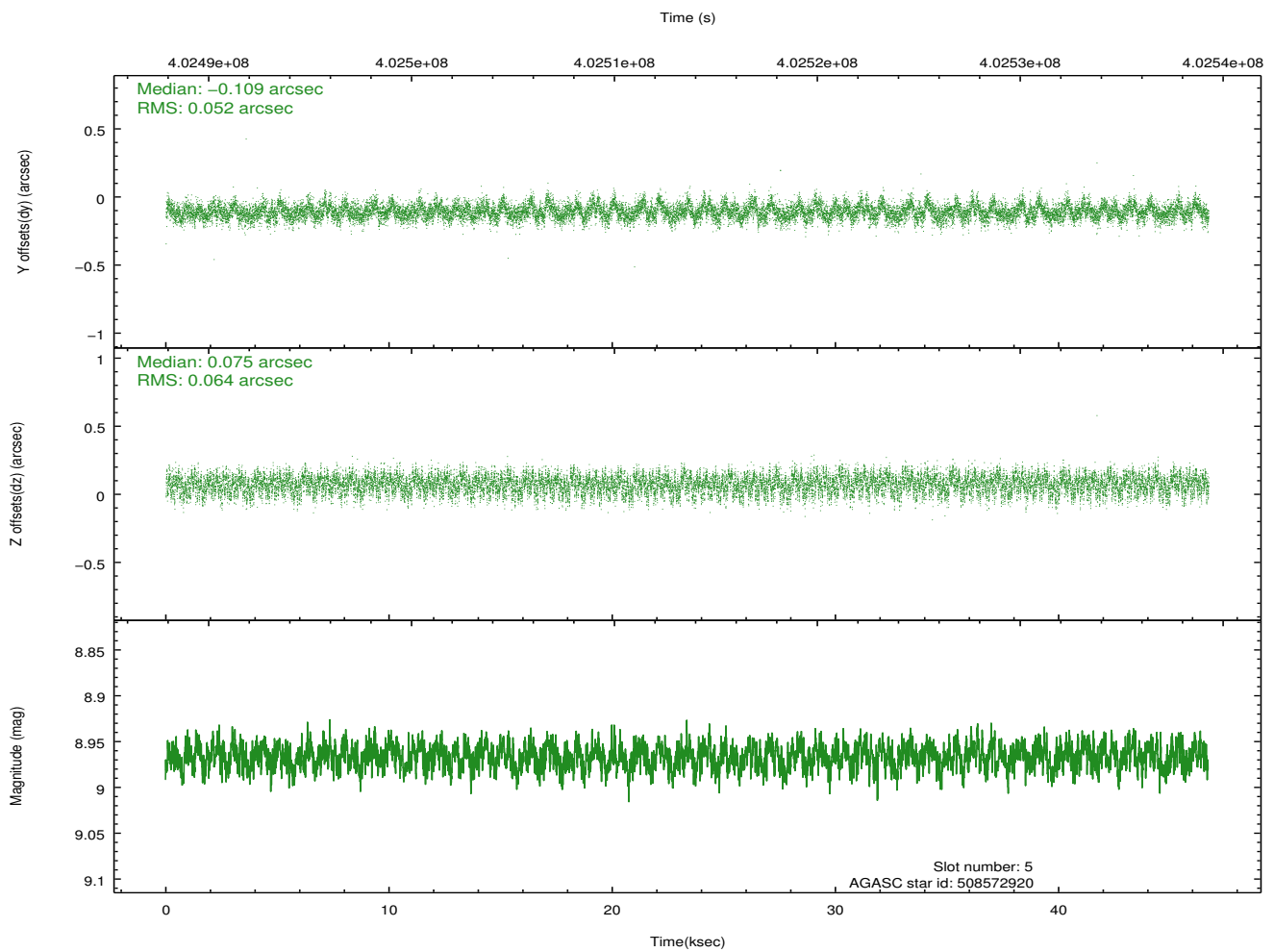
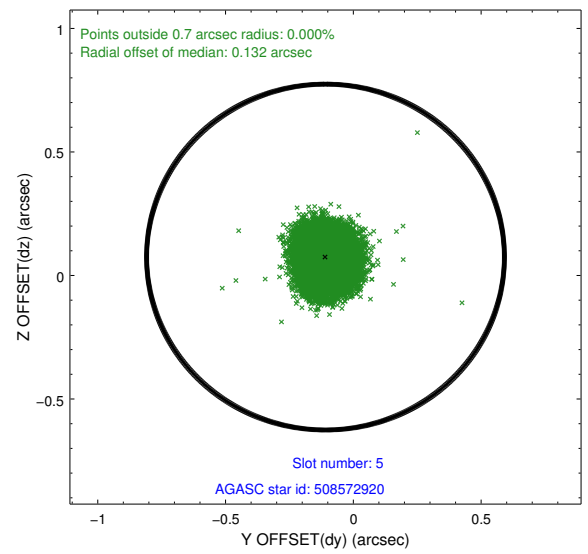
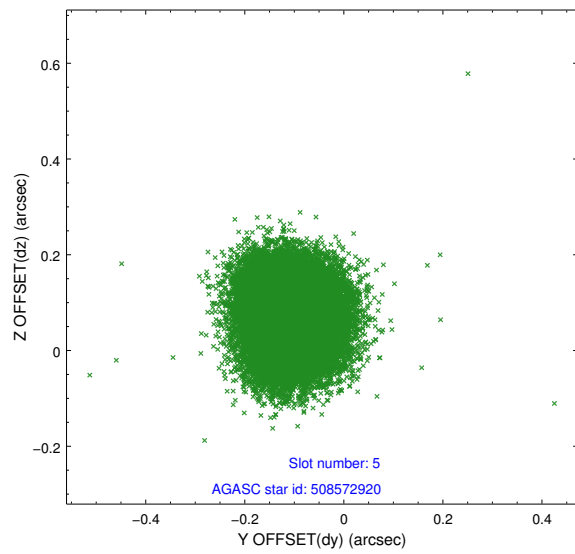
2.4.1 Slot 3



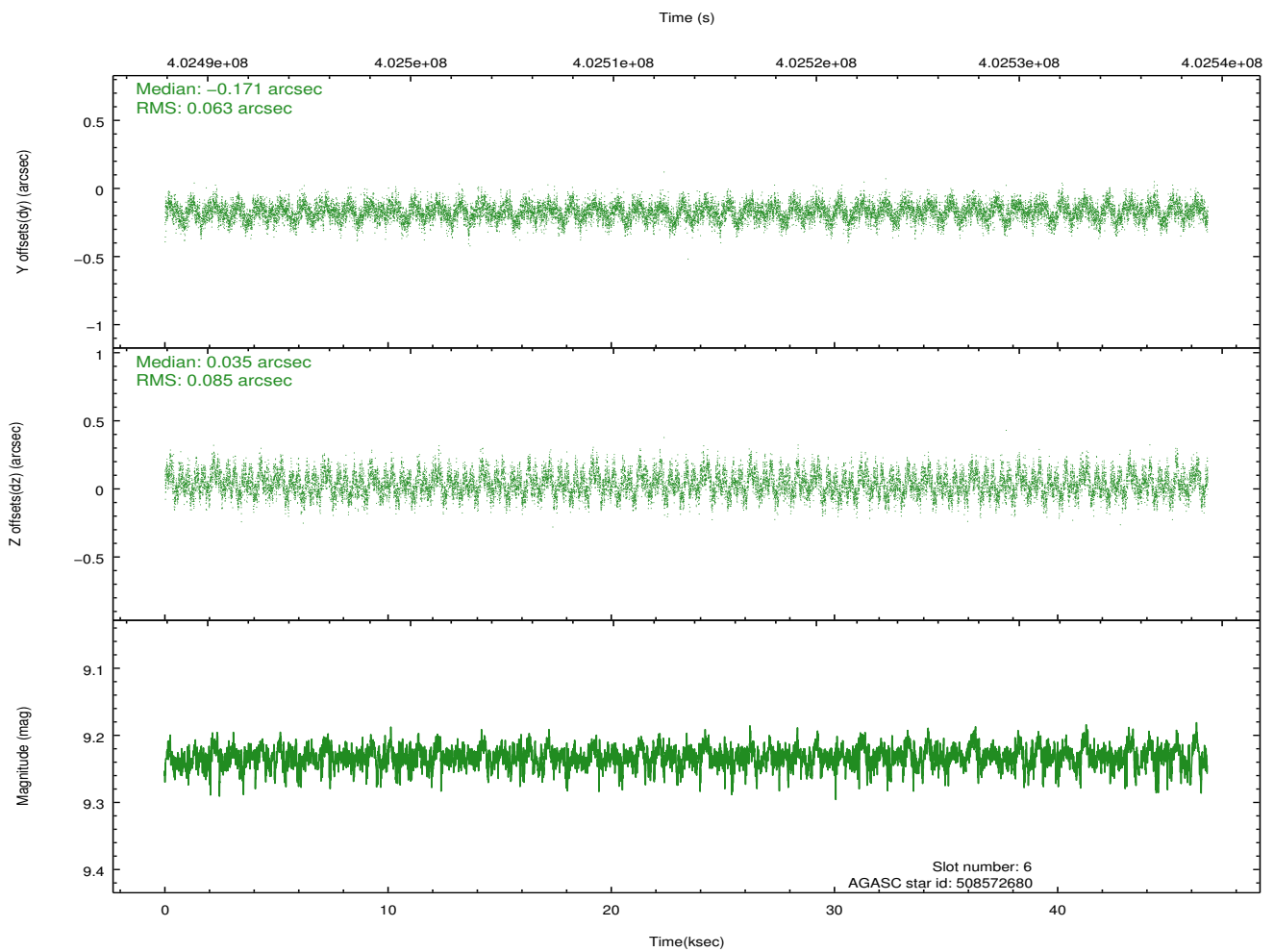
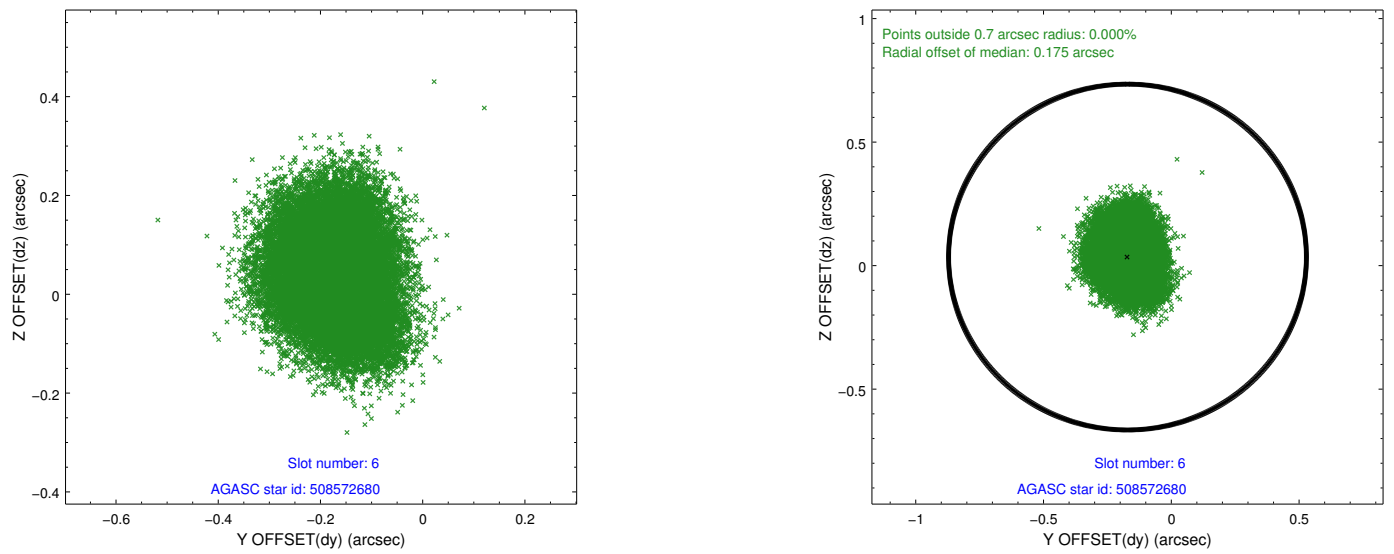
2.4.2 Slot 4



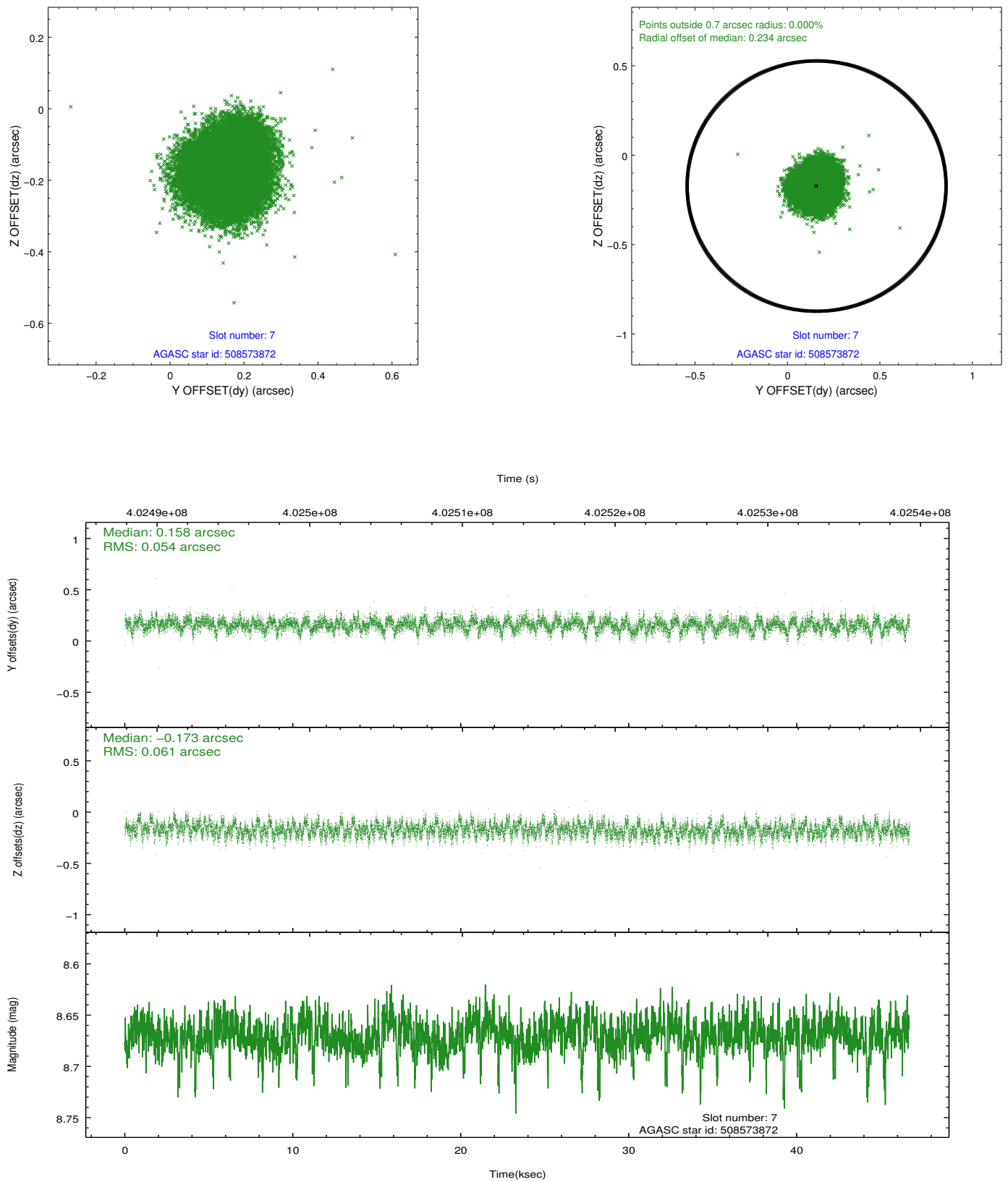
2.4.3 Slot 5



2.4.4 Slot 6

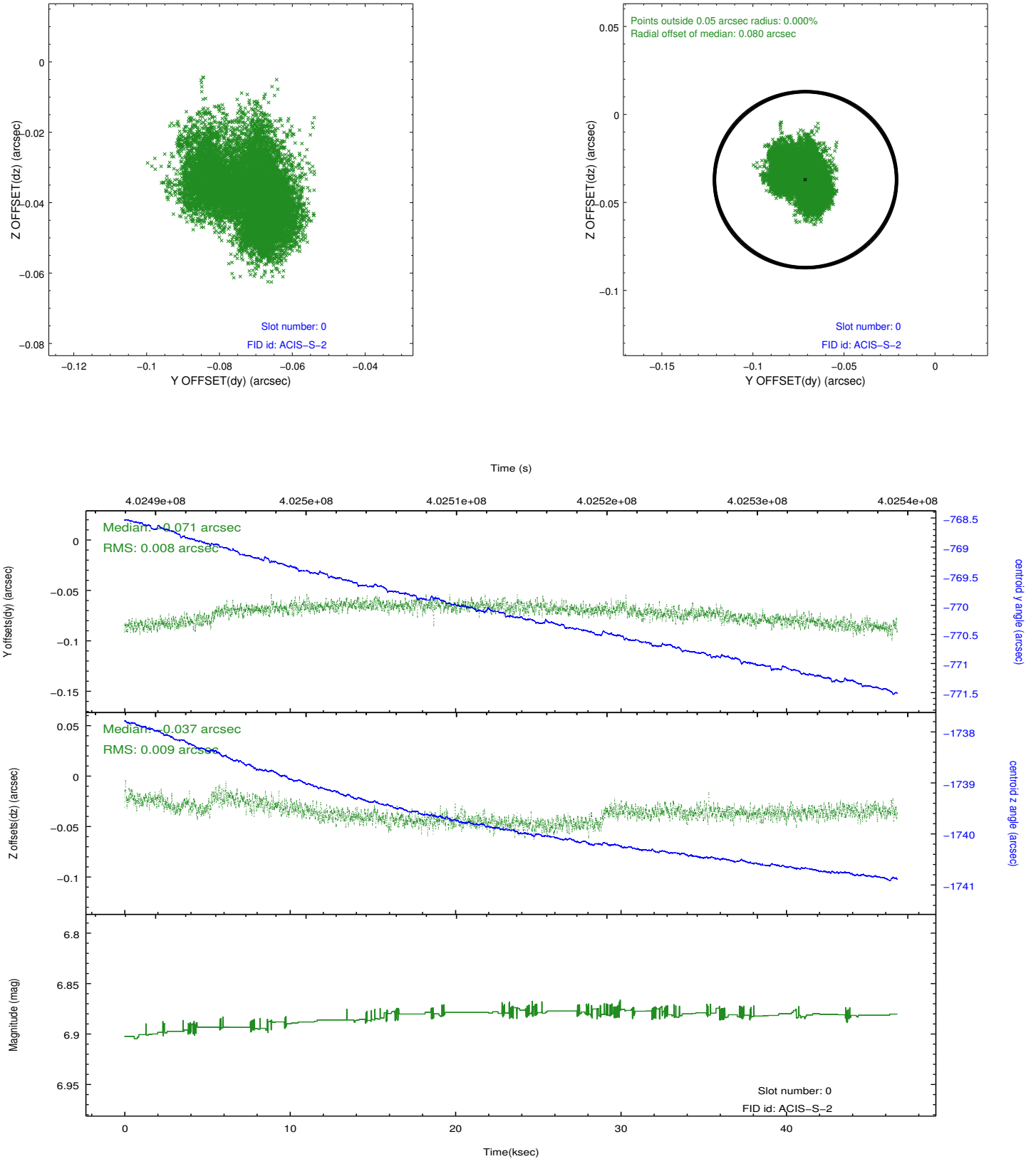


2.4.5 Slot 7

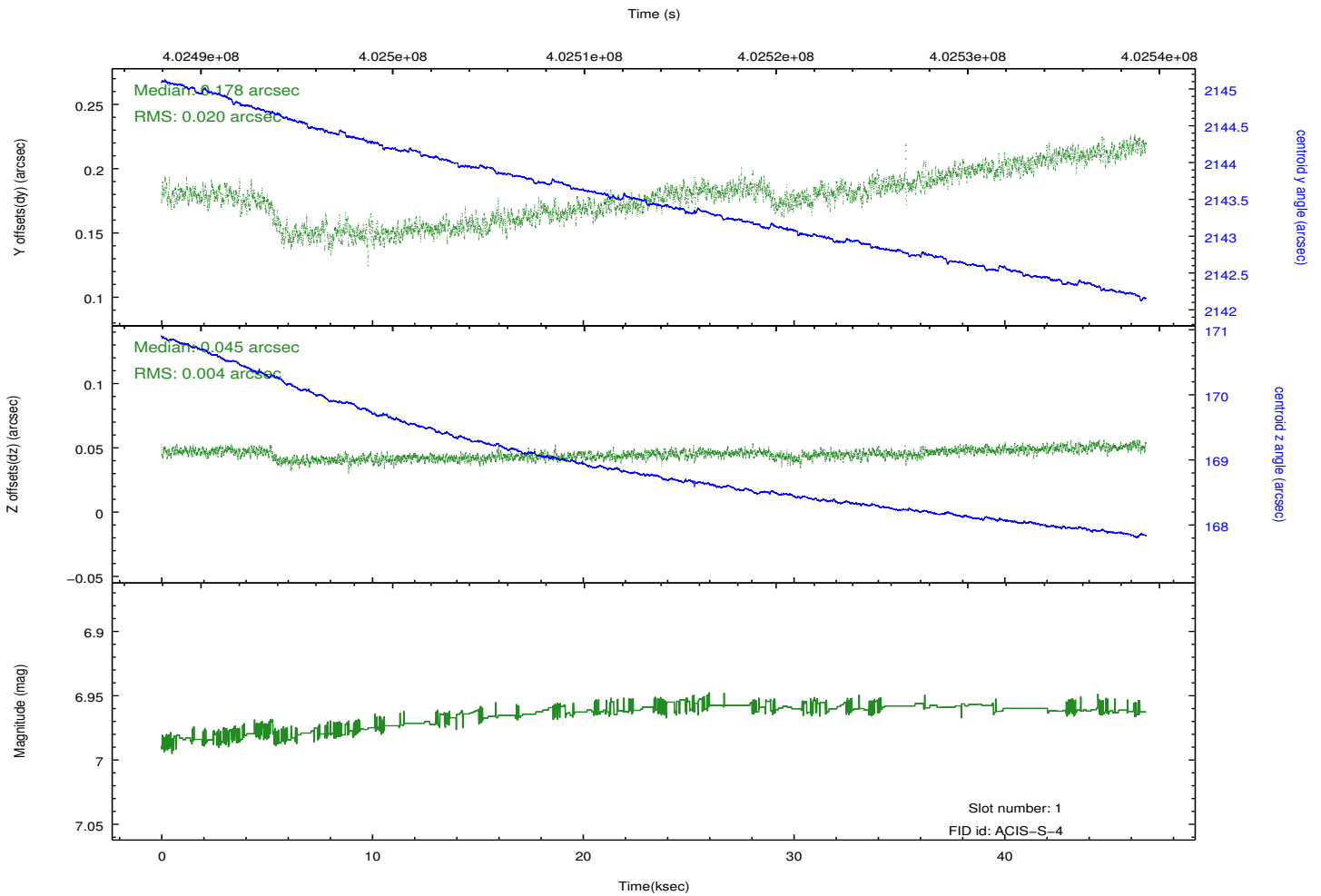
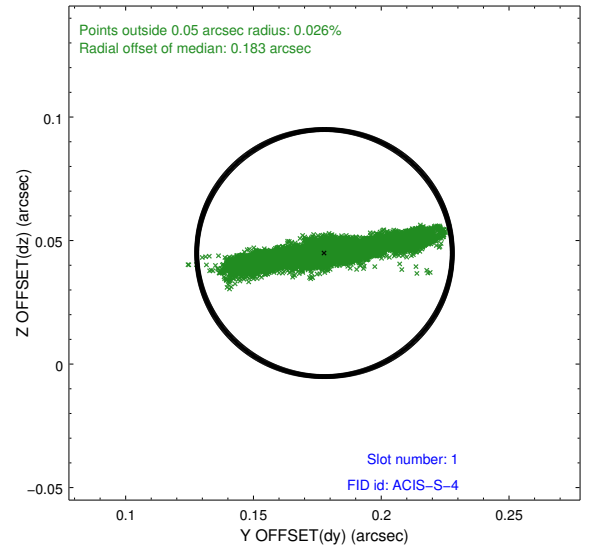
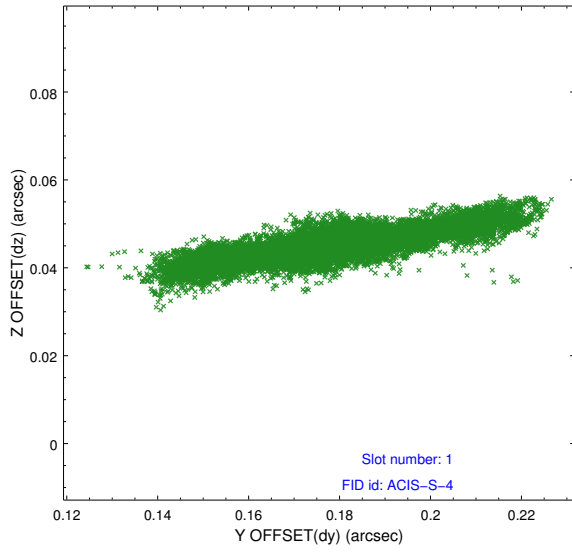


2.5 FID Slots

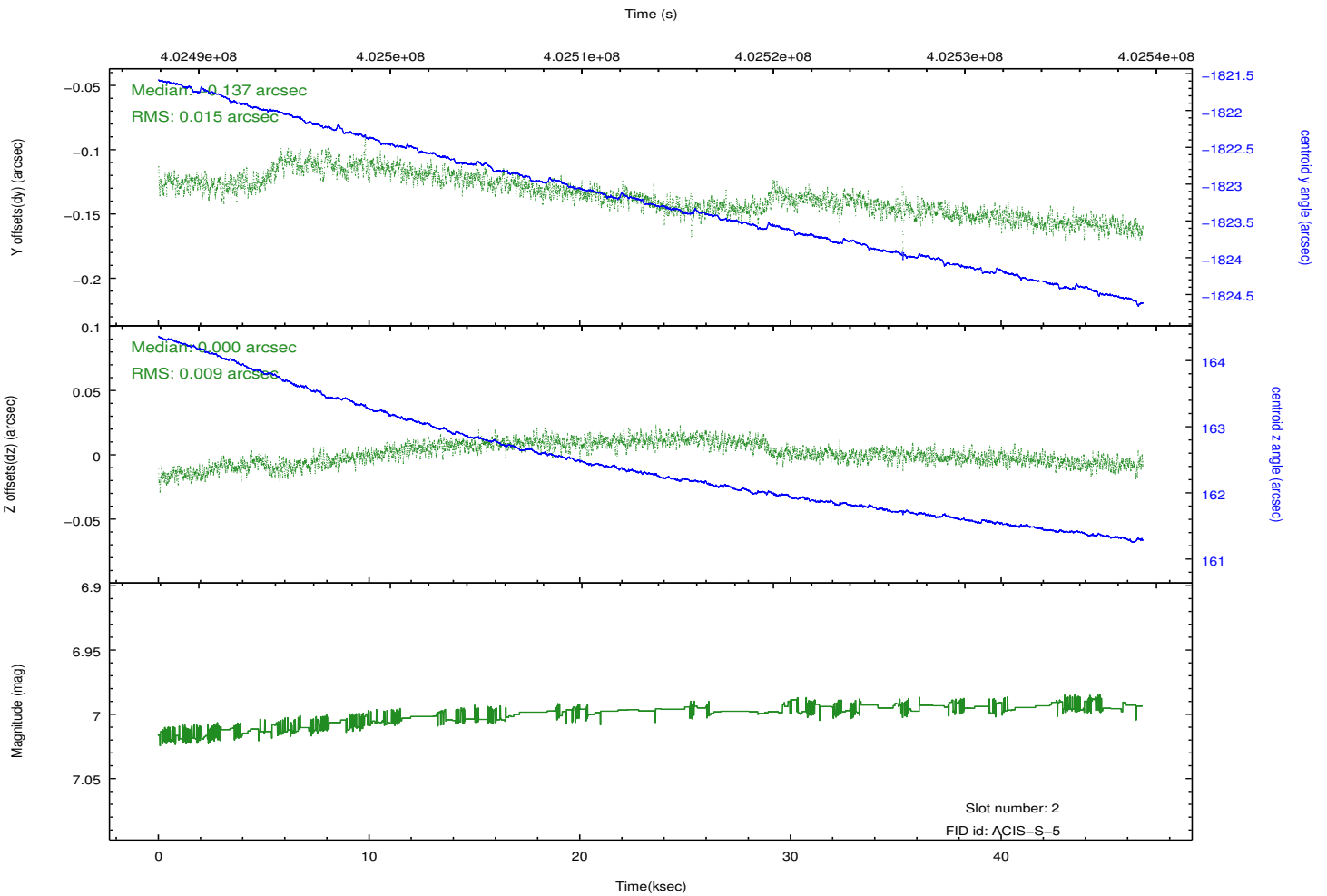
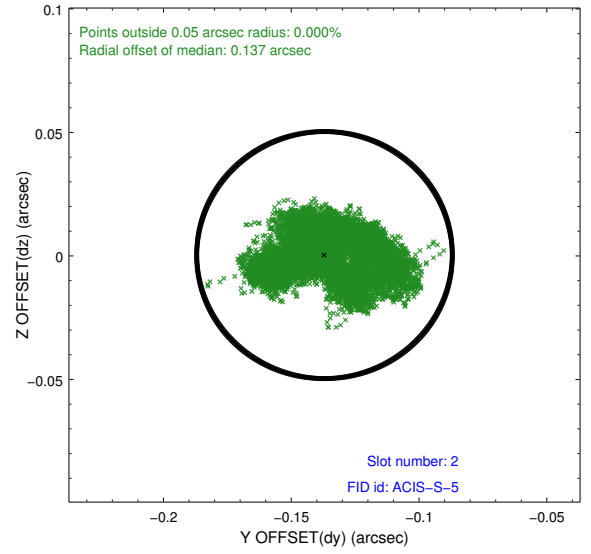
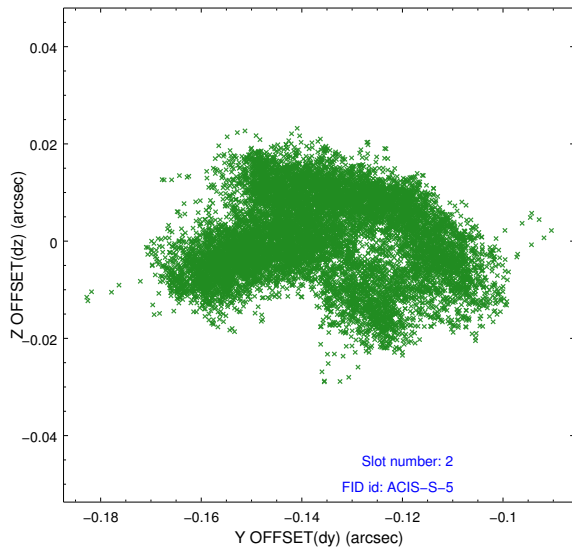
2.5.1 Slot 0



2.5.2 Slot 1



2.5.3 Slot 2



A Summary

A.1 Status

V&V Scientist	Beth Sundheim
V&V Date (YYYY-MM-DD)	2012.07.13
V&V Edition	1
V&V Disposition and Status	OK
V&V Charge Time	46.647622895181

A.2 Comments

Joint proposal with HST.