

# V&V Reference Report

## L2 ASCDS Version : 8.4.5

Observation 11533 - L2 Version 2  
Chandra X-Ray Center

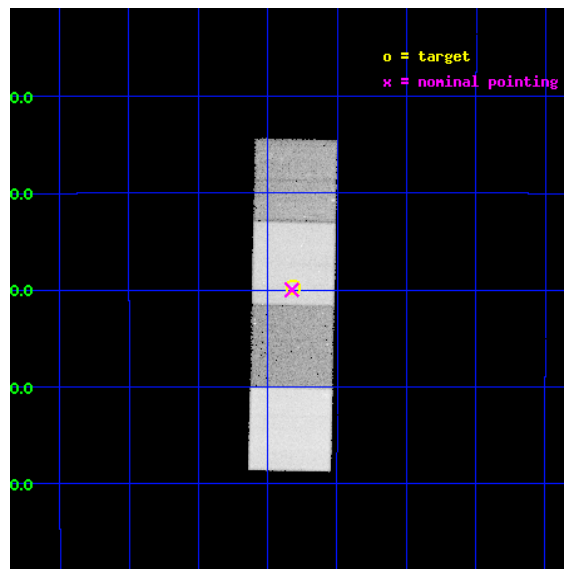
L2 Processing Date : Jun 24 2012

## Contents

<b>1</b>	<b>Front</b>	<b>2</b>
<b>2</b>	<b>OBI</b>	<b>3</b>
2.1	OBI . . . . .	3
2.1.1	Images . . . . .	3
2.1.2	Bias . . . . .	3
2.1.3	Parameters . . . . .	4
2.1.4	Events . . . . .	4
2.2	Compared Parameters . . . . .	5
2.3	Aspect . . . . .	6
2.4	Star Slots . . . . .	9
2.4.1	Slot 3 . . . . .	9
2.4.2	Slot 4 . . . . .	10
2.4.3	Slot 5 . . . . .	11
2.4.4	Slot 6 . . . . .	12
2.4.5	Slot 7 . . . . .	13
2.5	FID Slots . . . . .	14
2.5.1	Slot 0 . . . . .	14
2.5.2	Slot 1 . . . . .	15
2.5.3	Slot 2 . . . . .	16
<b>A</b>	<b>Summary</b>	<b>17</b>
A.1	Status . . . . .	17
A.2	Comments . . . . .	17

# 1 Front

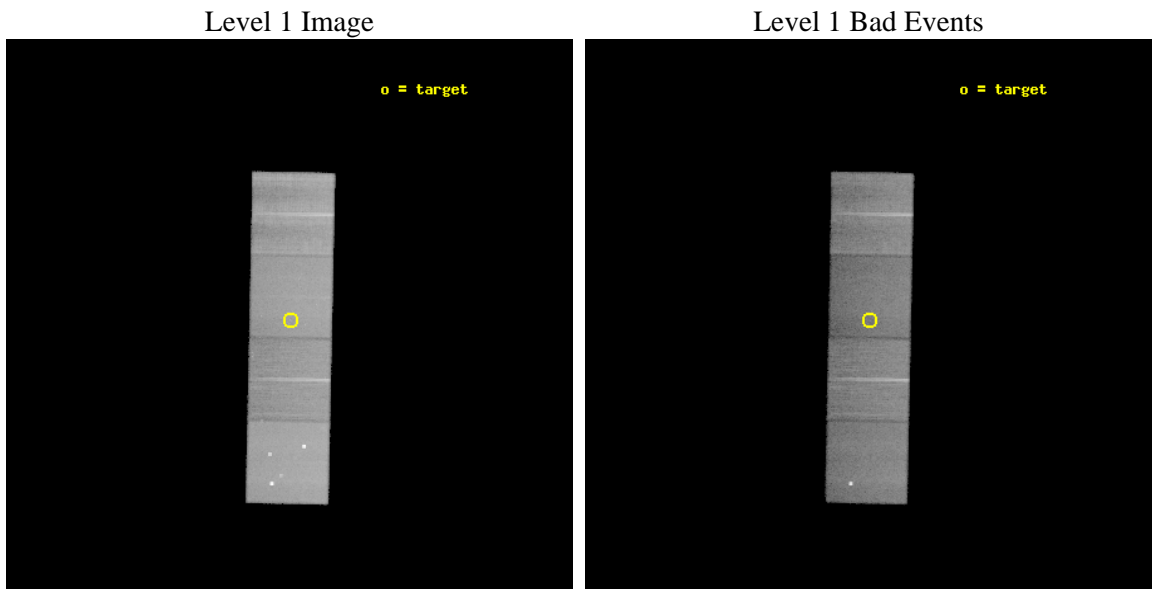
seq_num	702119	Sequence number
obs_id	11533	Observation id
title	Deeply embedded AGNs in infrared ultraluminous starbursts	Proposal
observer	Dr Guido Risaliti	Principal investigator
object	IRAS 12127-1412	Source name
dtcycle	0	&#160
cycle	P	events from which exps? Prim/Second/Both
ra_targ	183.82875	Observer's specified target RA [deg]
dec_targ	-14.495833	Observer's specified target Dec [deg]
ra_nom	183.83147733092	Nominal RA [deg]
dec_nom	-14.499909195438	Nominal Dec [deg]
roll_nom	271.1573198599	Nominal Roll [deg]
revision	2	Processing version of data
ontime	35160.200270414	Sum of GTIs [s]
livetime	34700.806369319	Livetime [s]
ontime5	35160.200270414	Sum of GTIs [s]
ontime6	35160.200270414	Sum of GTIs [s]
ontime7	35160.200270414	Sum of GTIs [s]
ontime8	35157.05926019	Sum of GTIs [s]
l2events	383301	Number of level 2 events



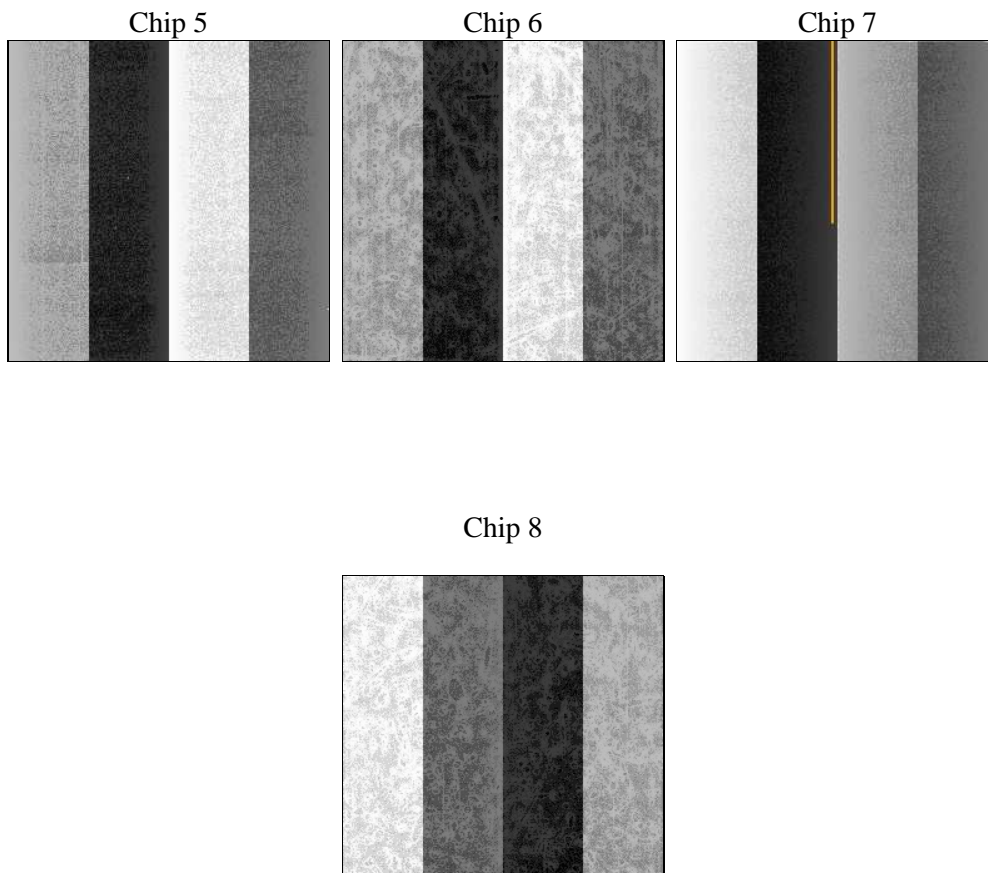
## 2 OBI

### 2.1 OBI

#### 2.1.1 Images



#### 2.1.2 Bias



### 2.1.3 Parameters

obi_num	0	Obi number	sched_exp_time	35000.000000	[s] Scheduled observation exposure time
ascdsver	8.4.5	Processing system revision	ontime	35160.200270414	Sum of GTIs [s]
caldbver	4.4.10	&#160	ontime5	35160.200270414	Sum of GTIs [s]
date	2012-06-24T23:11:00	Date and time of file creation	ontime6	35160.200270414	Sum of GTIs [s]
revision	2	Processing version of data	ontime7	35160.200270414	Sum of GTIs [s]
			ontime8	35157.05926019	Sum of GTIs [s]
			l1events	1369541	Number of level 1 events

### 2.1.4 Events

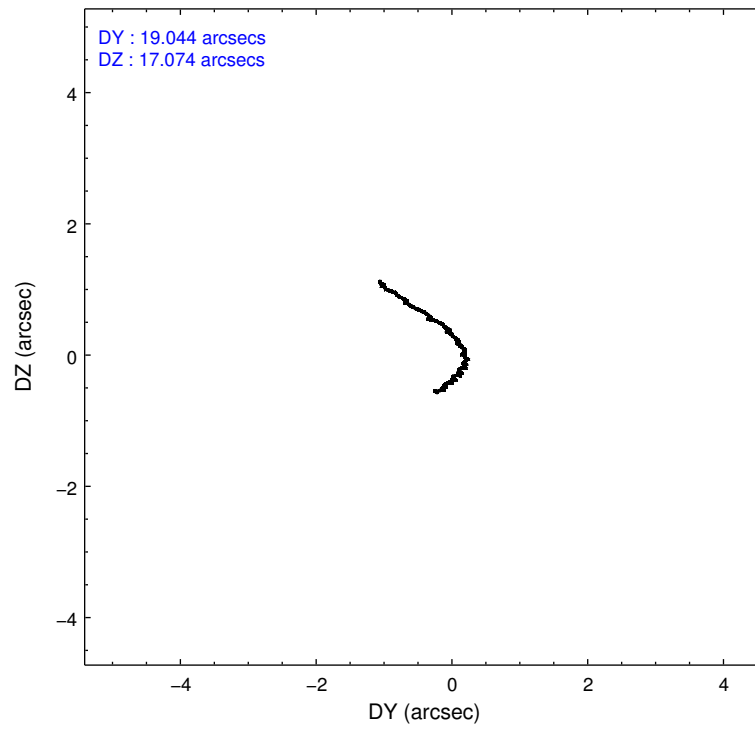
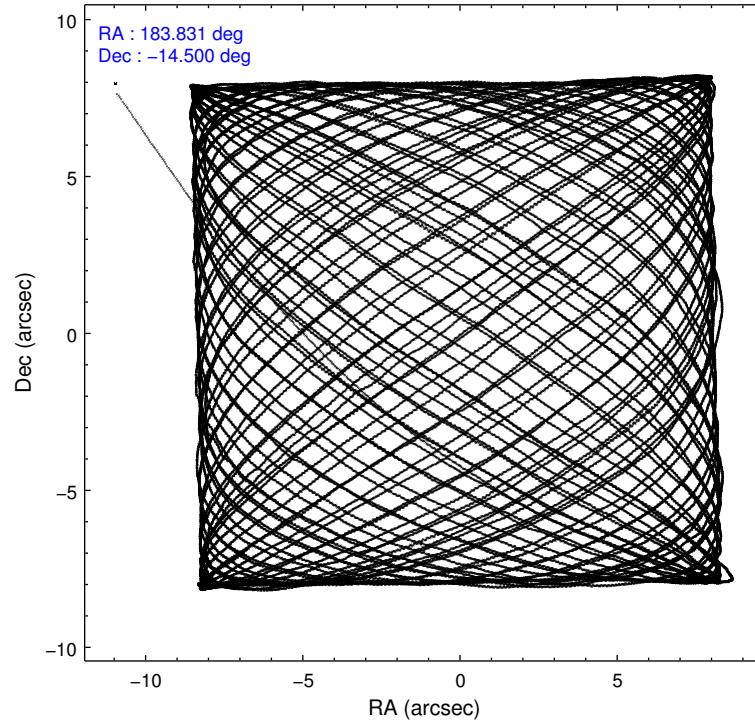
	ccd 5	ccd 6	ccd 7	ccd 8
level 1 events	421470	270054	325630	352387
rejected events	213673	240541	179659	261587
rejected %	50%	89%	55%	74%

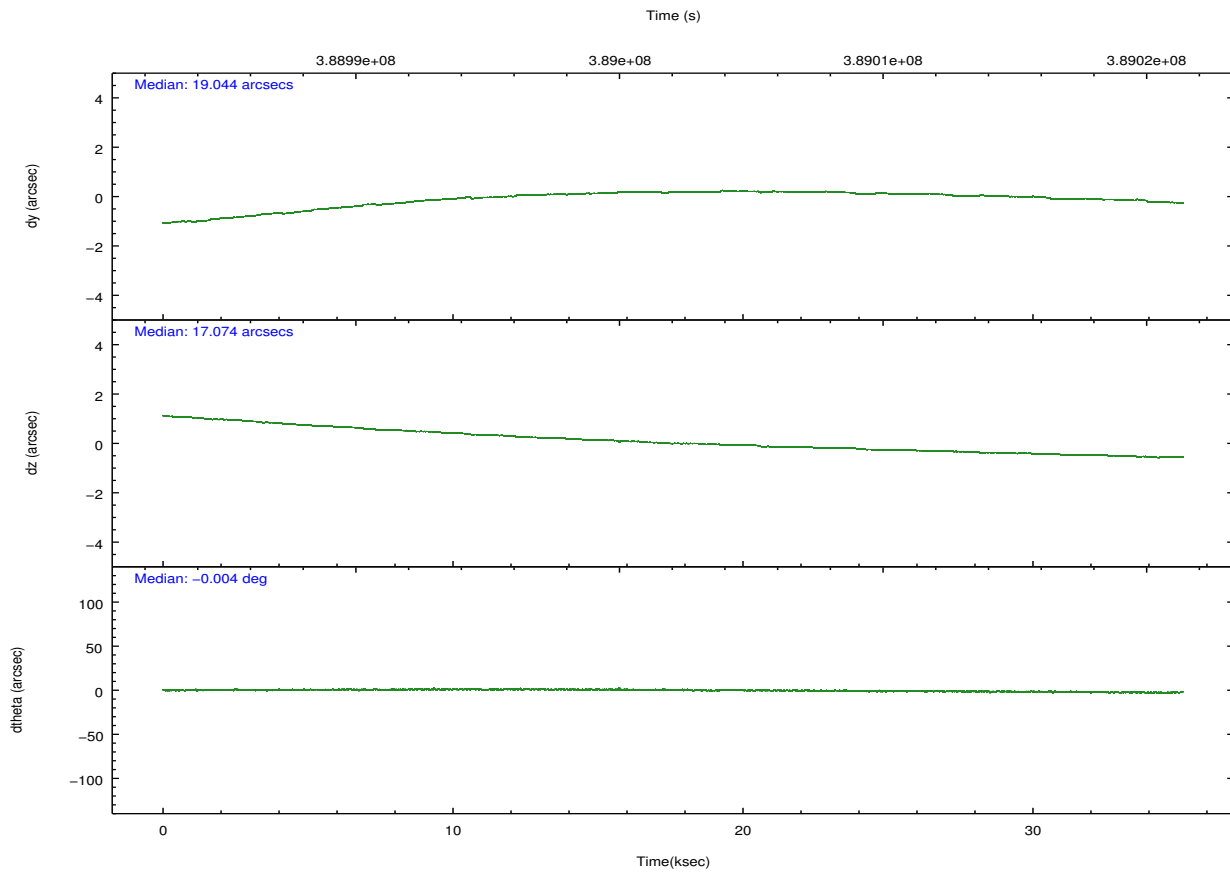
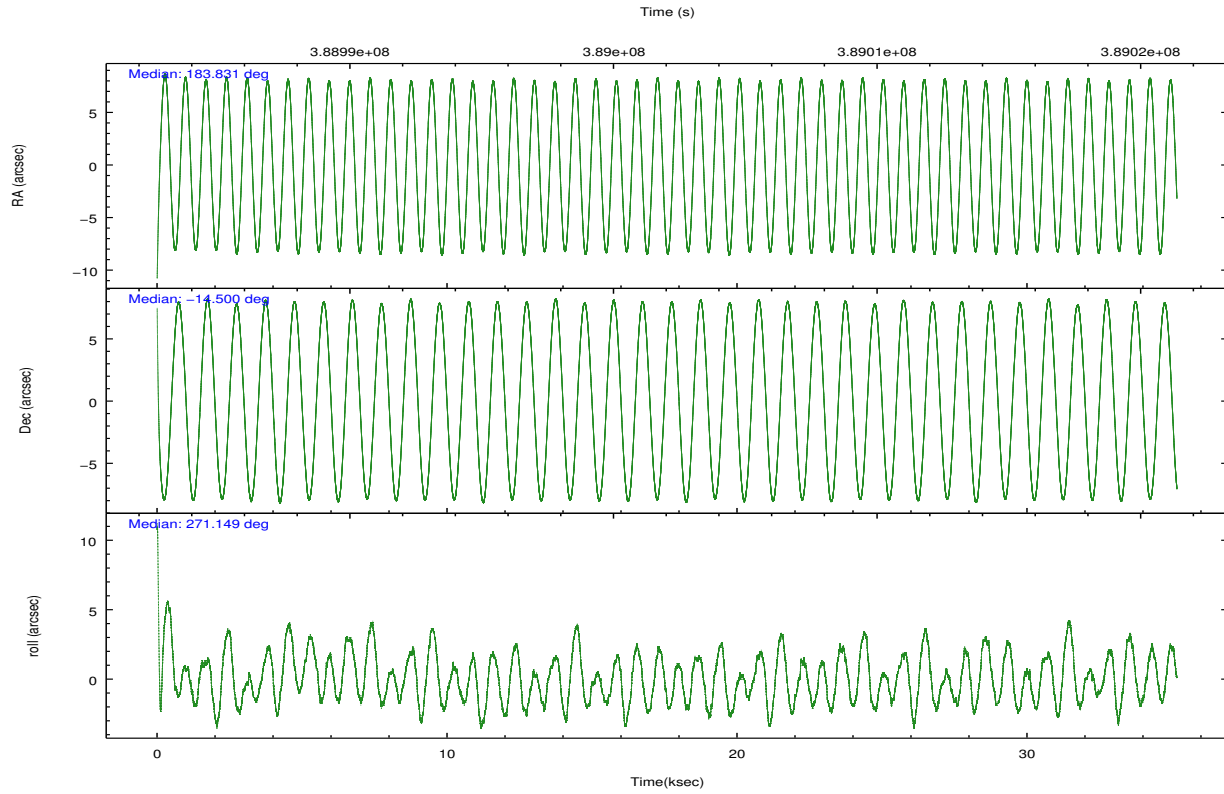
	ccd 5	ccd 6	ccd 7	ccd 8
grade 0 events	25053	10491	13914	28184
	5%	3%	4%	7%
grade 1 events	747	141	384	268
	0%	0%	0%	0%
grade 2 events	67081	6750	30360	21529
	15%	2%	9%	6%
grade 3 events	7862	3234	13523	9850
	1%	1%	4%	2%
grade 4 events	7424	3147	13307	9342
	1%	1%	4%	2%
grade 5 events	31976	12162	34202	17408
	7%	4%	10%	4%
grade 6 events	104629	6513	77633	23865
	24%	2%	23%	6%
grade 7 events	176698	227616	142307	241941
	41%	84%	43%	68%

## 2.2 Compared Parameters

Parameter	Planned	Actual	Parameter	Planned	Actual
Instrument	ACIS	ACIS	Obspar format version number	7	7
Detector	ACIS-5678	ACIS-5678	Obspar file type	PREDICTED	ACTUAL
Grating	NONE	NONE	Obspar update status	NONE	UPDATED
Data mode	VFAINT	VFAINT	Number of optional ACIS chips dropped	0	0
Observation mode	POINTING	POINTING	On-chip summing requested	N	N
[deg] Pointing RA	183.816524	183.8314773309237	Subarray requested	NONE	NONE
[deg] Pointing Dec	-14.476699	-14.49990919543812	Alternating exposures requested	N	N
[deg] Pointing Roll	270.996946	271.1573198598998	[s] Primary exposure time	0.000000	3.1
[mm] SIM focus pos	-0.684267	-0.6828225247311905			
[mm] SIM defocus	0	0.001444936568705701			
[mm] SIM translation stage pos	-190.132523	-190.1425803651734			
[mm] SIM translation stage offset	0	0.01005778216563158			
[s] Observation start time (MET)	388984620.184000	388983351.30868			
Observation start date	2010-04-30T03:15:54	2010-04-30T02:55:51			
[s] Observation end time (MET)	389019620.184000	389020305.63556			
Observation end date	2010-04-30T12:59:14	2010-04-30T13:11:45			
Read mode	TIMED	TIMED			

## 2.3 Aspect



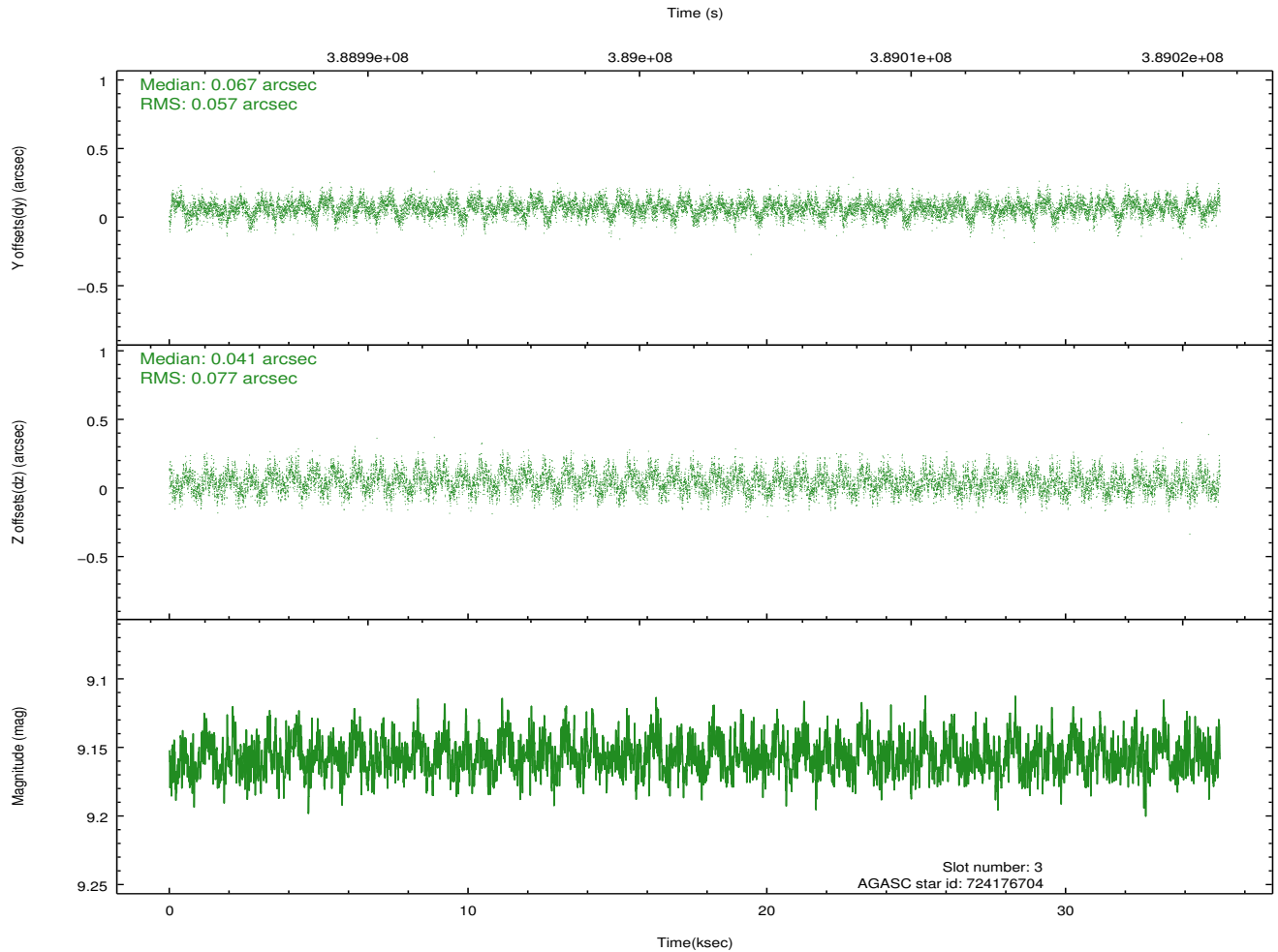
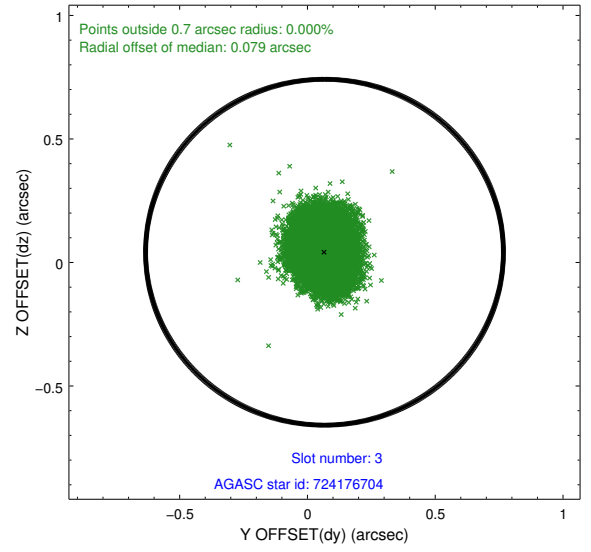
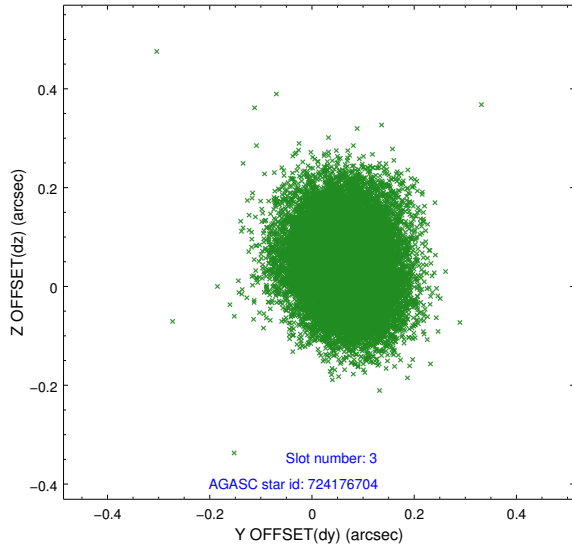


### Slot Statistics

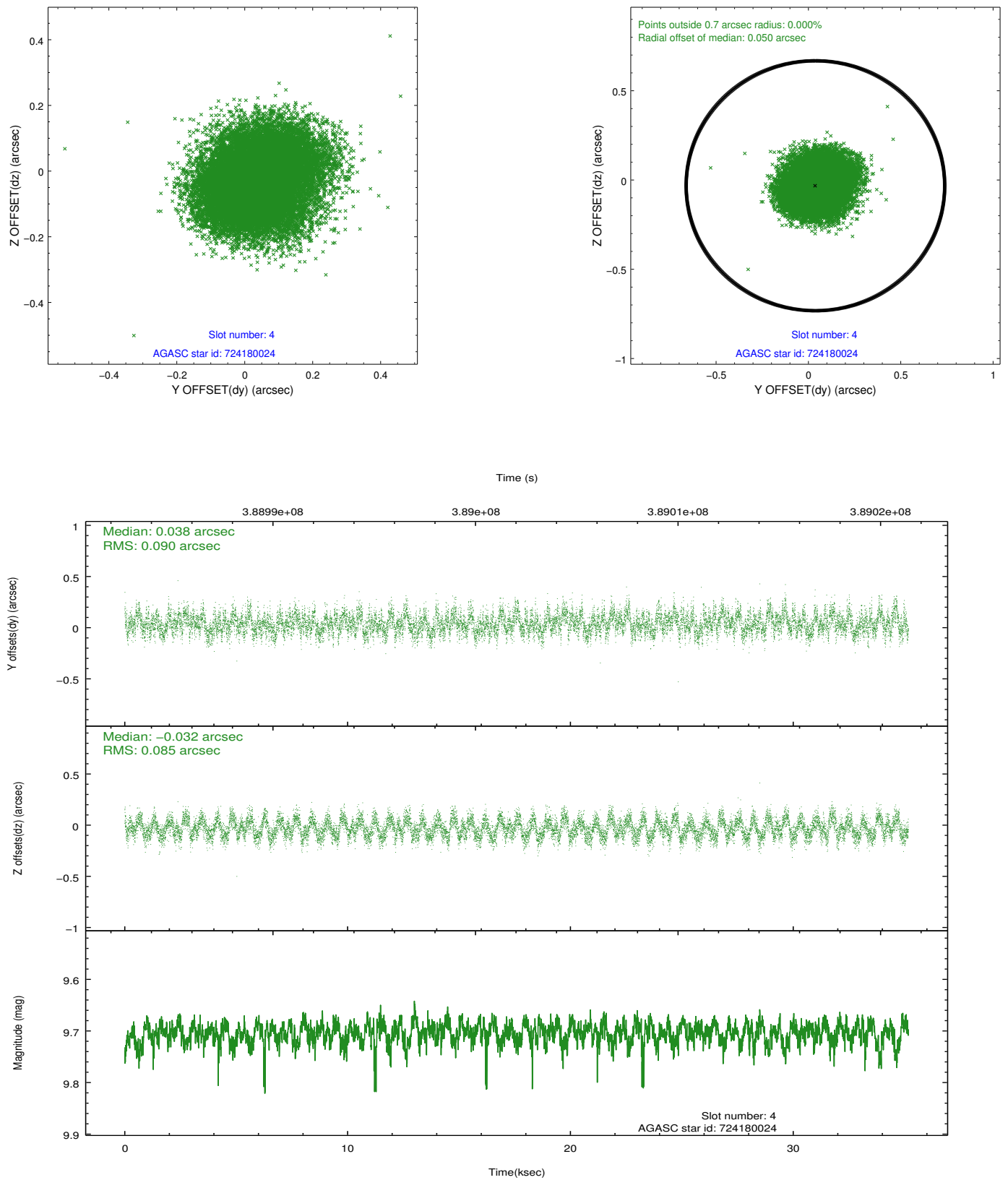
slot	status	id	mag	n_pts	med_dy	med_dz	dr1	dr2	ra	dec	mean_y	mean_z
0	FID	ACIS-S-1	6.96	8577	0.064	-0.064	0.018	0.044	0.000000	0.000000	924.07	-1734.28
1	FID	ACIS-S-4	6.98	8578	0.165	0.020	0.018	0.046	0.000000	0.000000	2141.62	169.90
2	FID	ACIS-S-5	7.01	8577	-0.257	0.059	0.007	0.012	0.000000	0.000000	-1825.05	163.64
3	GUIDE	724176704	9.16	17142	0.067	0.041	0.104	0.164	183.233385	-14.245296	-864.96	-2020.29
4	GUIDE	724180024	9.70	17124	0.038	-0.032	0.134	0.208	183.546482	-14.990248	1833.30	-971.19
5	GUIDE	725095960	7.02	17143	-0.234	-0.171	0.071	0.108	183.877937	-14.072070	-1452.40	239.51
6	GUIDE	725101424	8.86	17145	0.136	0.013	0.104	0.188	184.500291	-14.937963	1704.19	2347.69
7	GUIDE	724180144	9.79	17124	-0.010	0.145	0.180	0.295	183.274724	-14.276824	-749.35	-1877.46

## 2.4 Star Slots

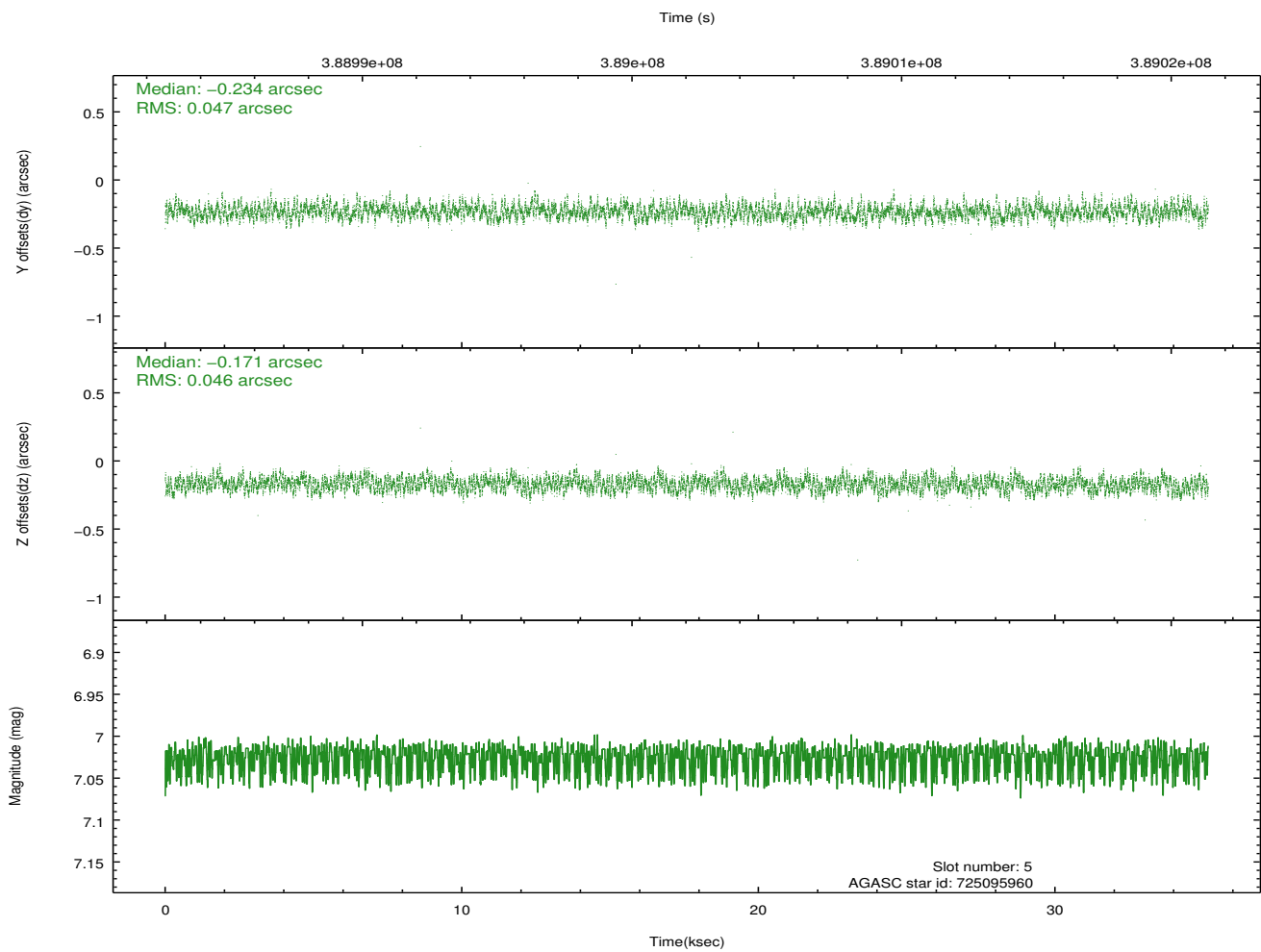
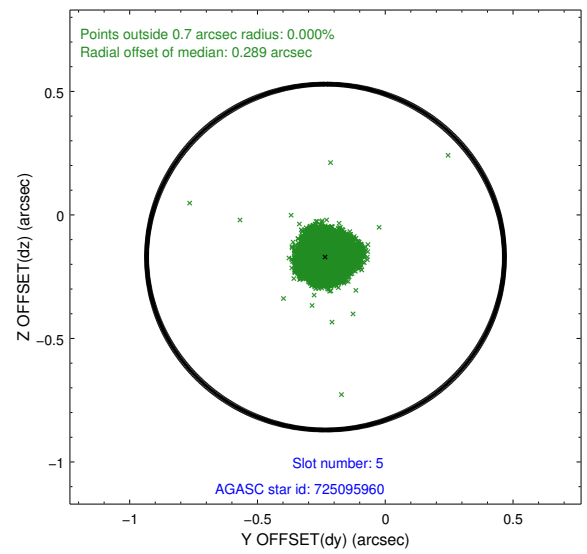
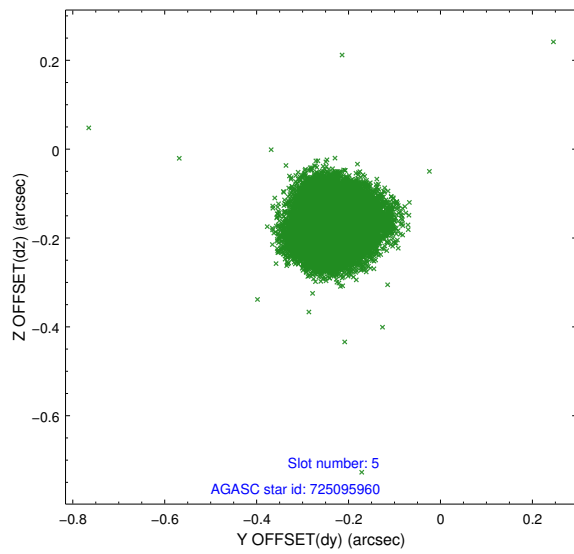
### 2.4.1 Slot 3



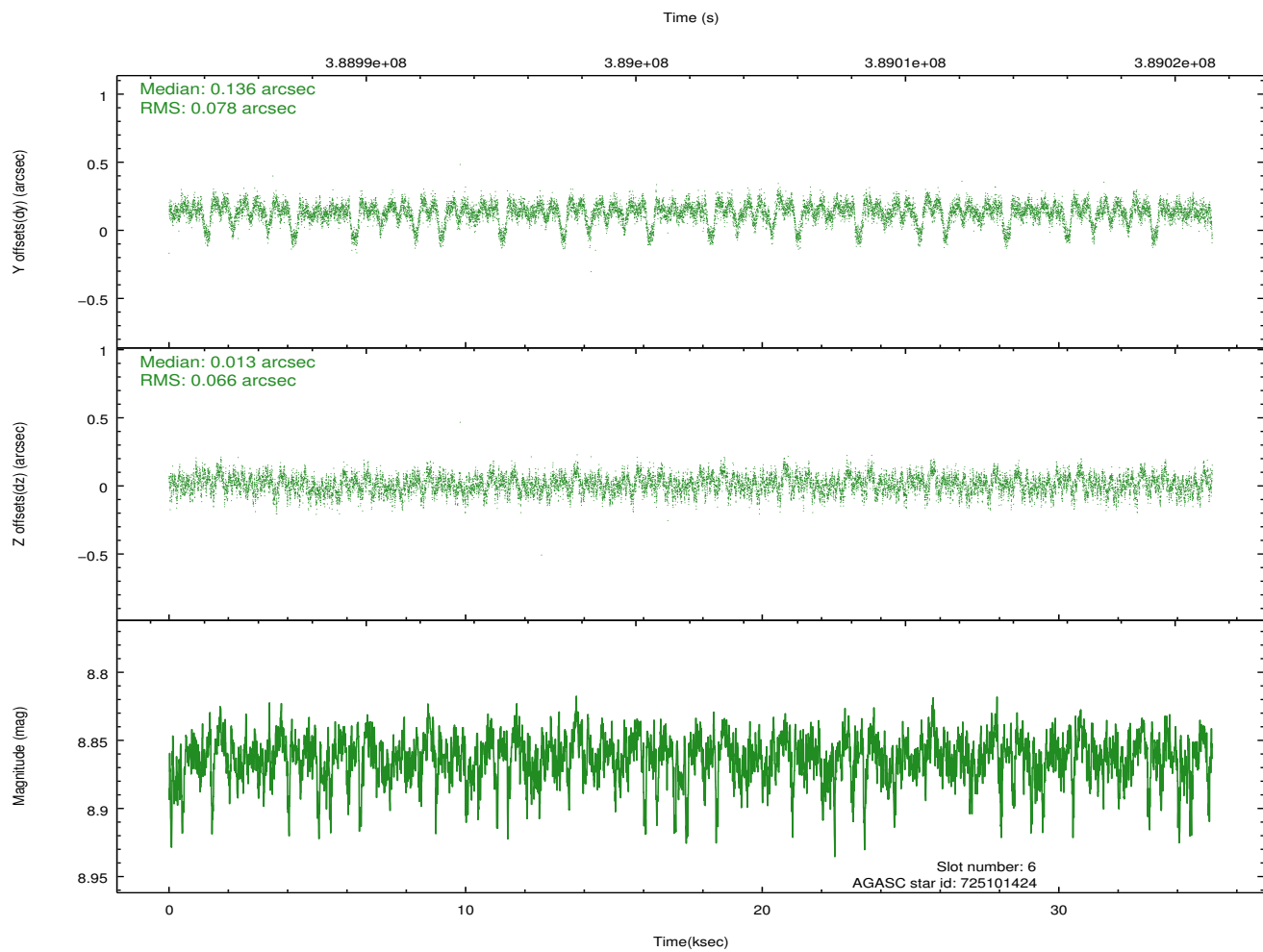
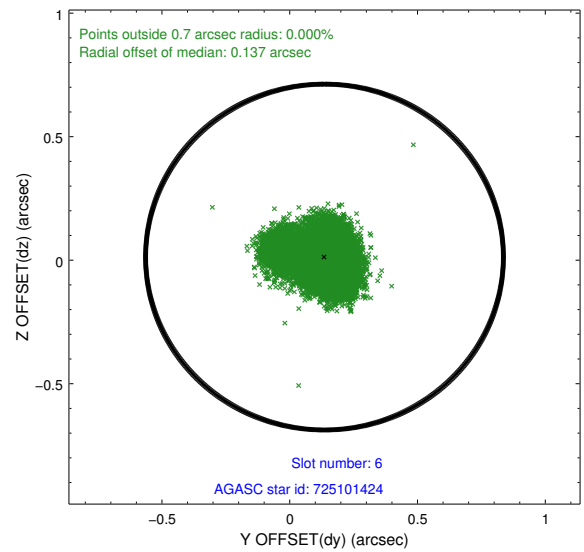
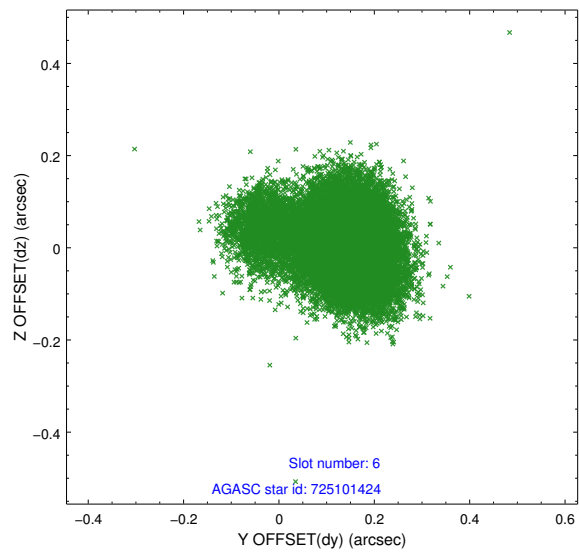
## 2.4.2 Slot 4



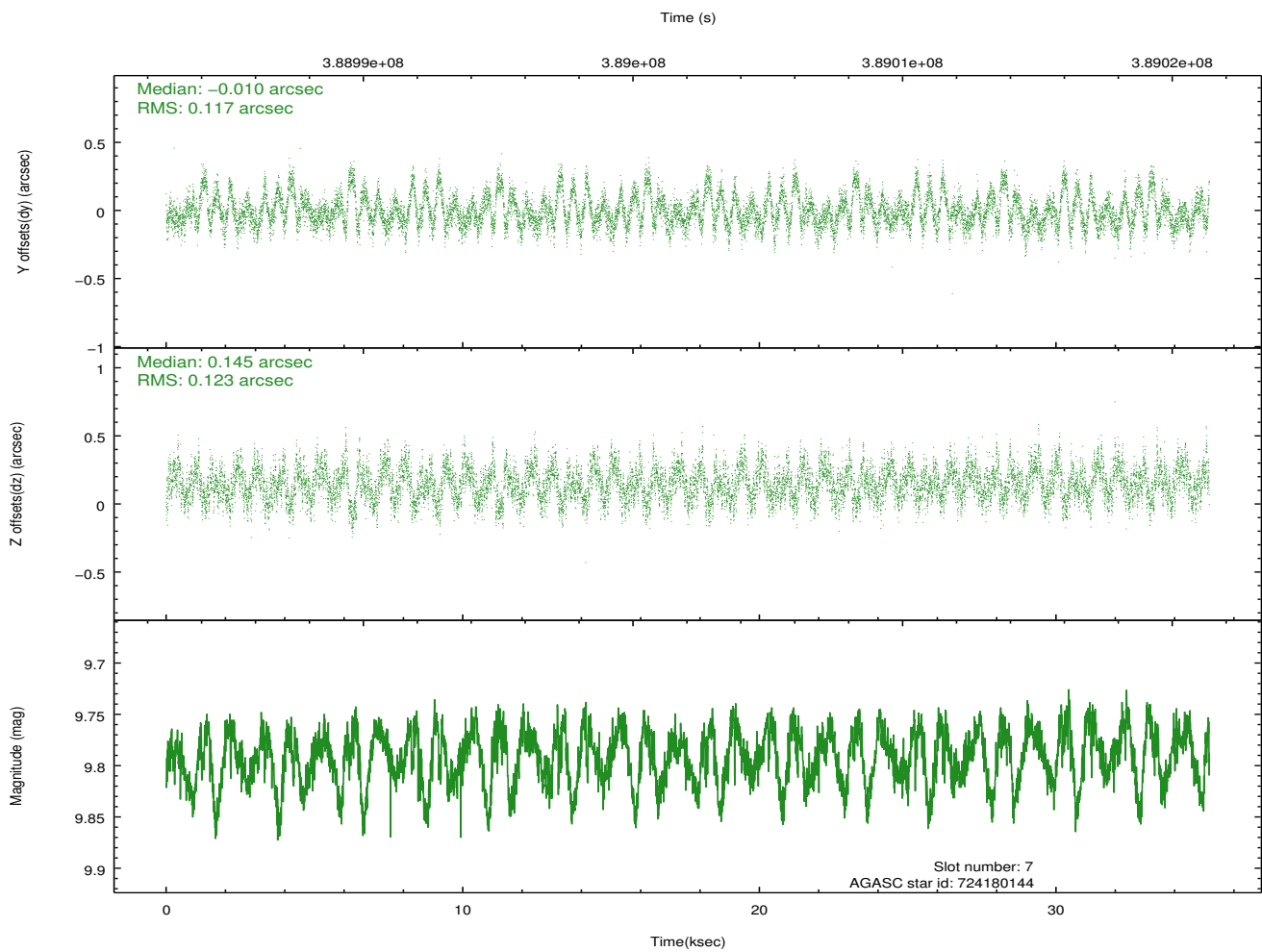
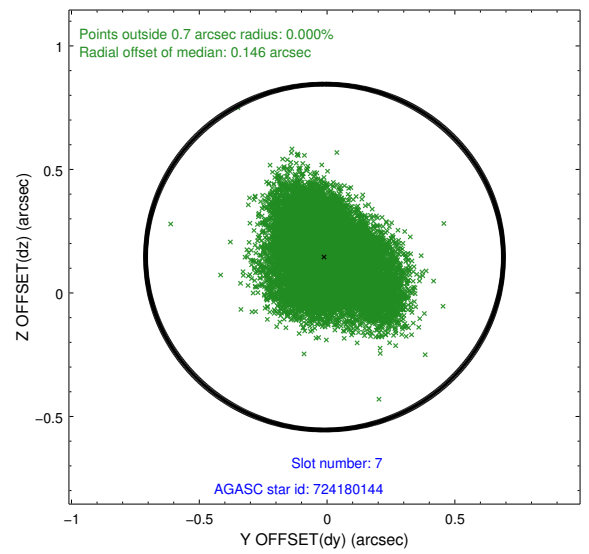
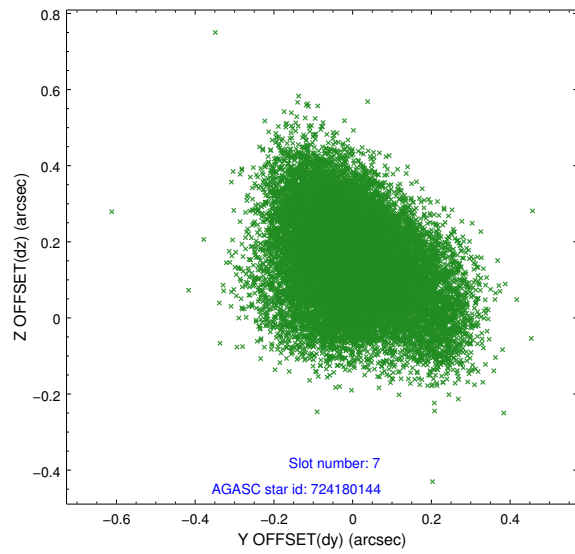
### 2.4.3 Slot 5



## 2.4.4 Slot 6

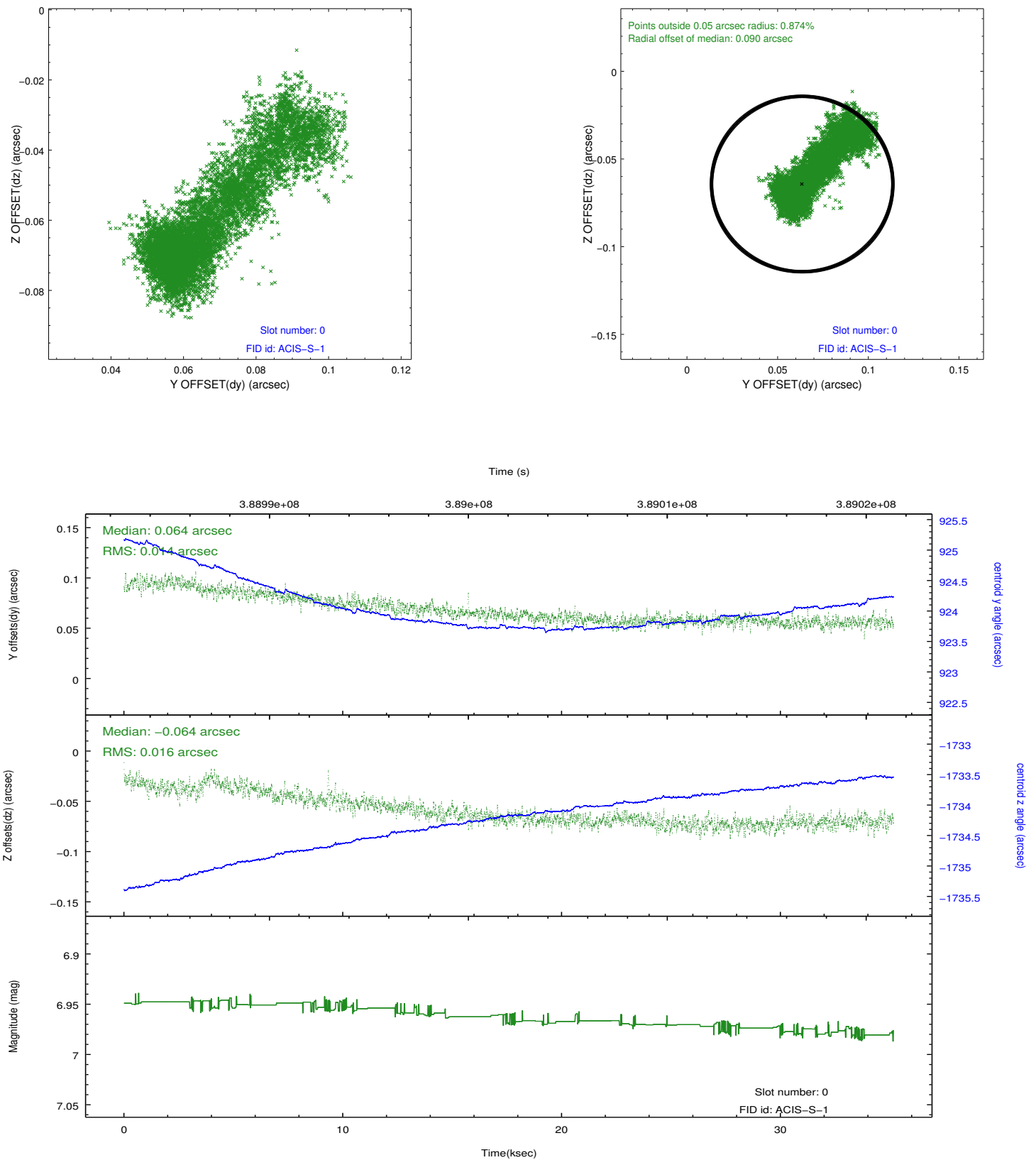


## 2.4.5 Slot 7

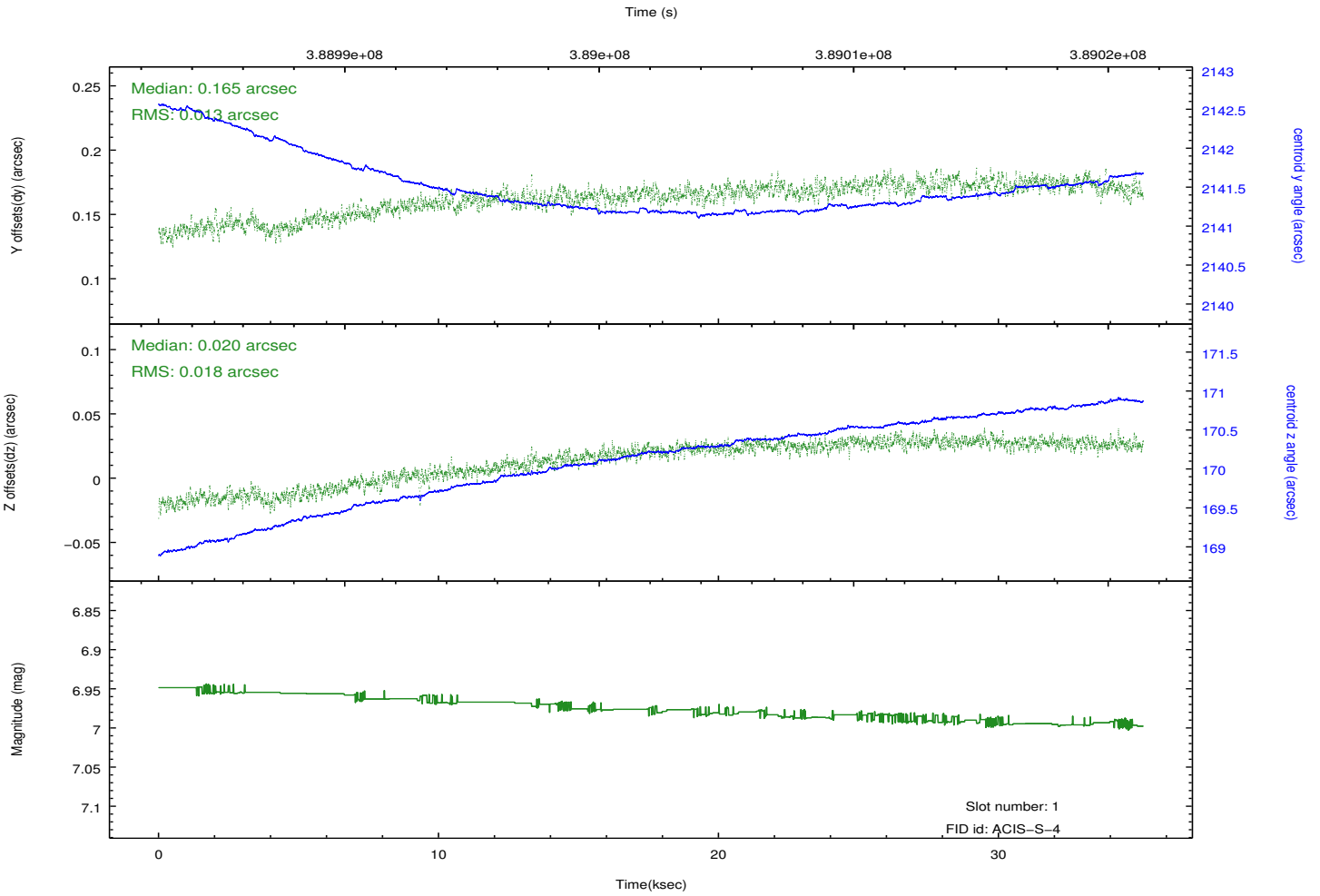
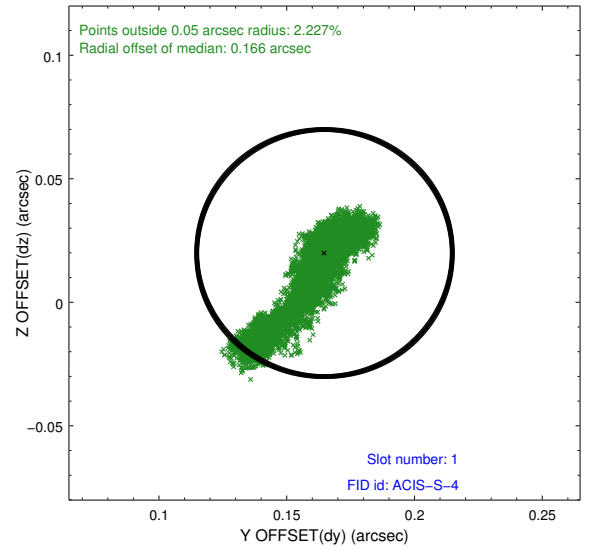
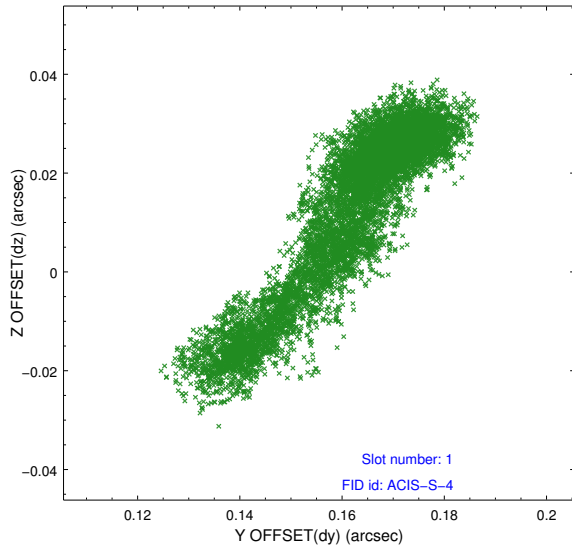


## 2.5 FID Slots

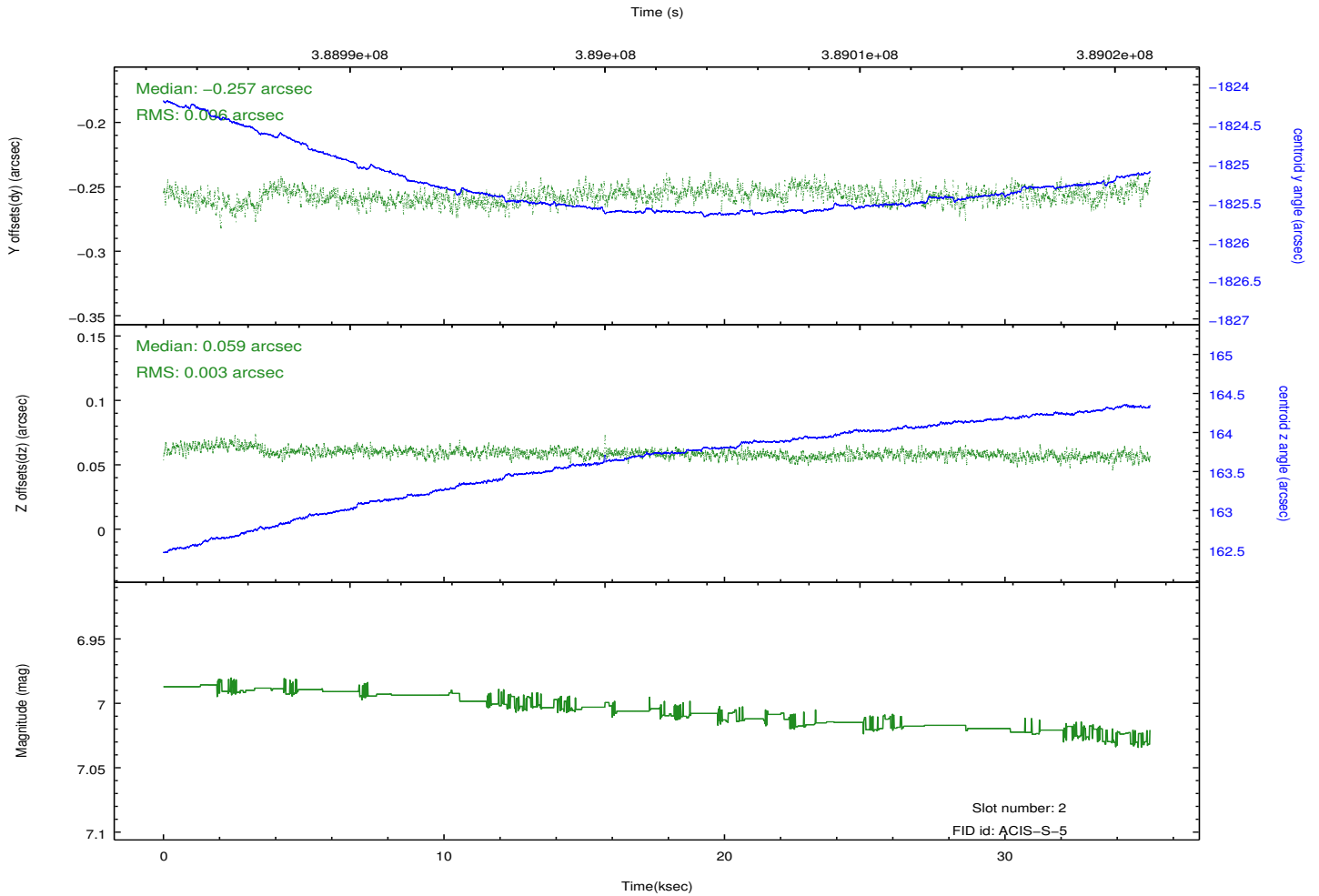
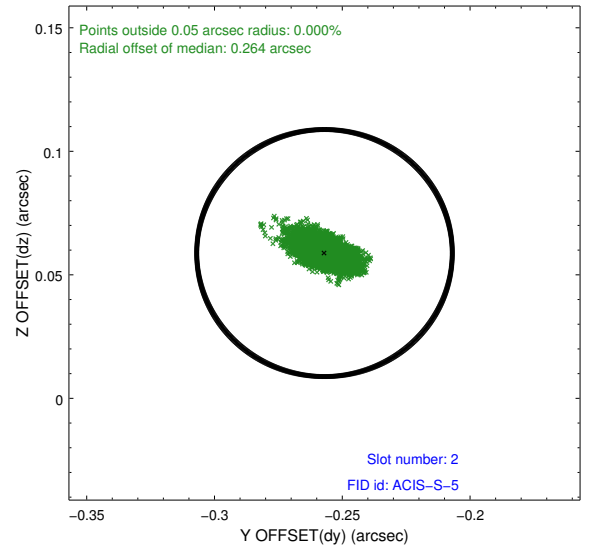
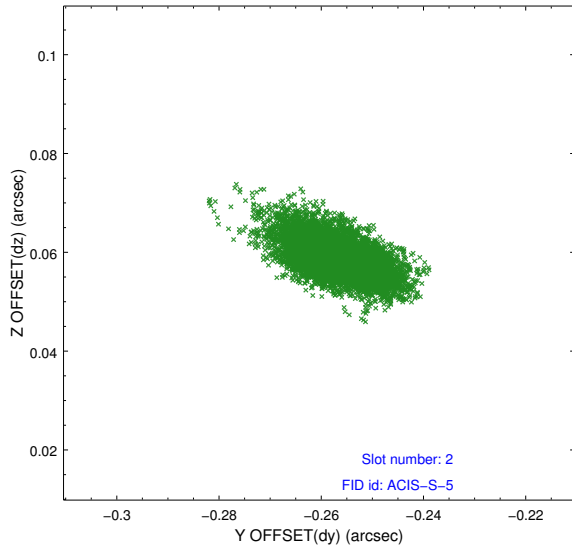
### 2.5.1 Slot 0



## 2.5.2 Slot 1



### 2.5.3 Slot 2



## A Summary

### A.1 Status

V&V Scientist	Beth Sundheim
V&V Date (YYYY-MM-DD)	2012.07.02
V&V Edition	1
V&V Disposition and Status	OK
V&V Charge Time	35.160200270414

### A.2 Comments