

V&V Reference Report

L2 ASCDS Version : 8.4.5

Observation 11783 - L2 Version 2
Chandra X-Ray Center

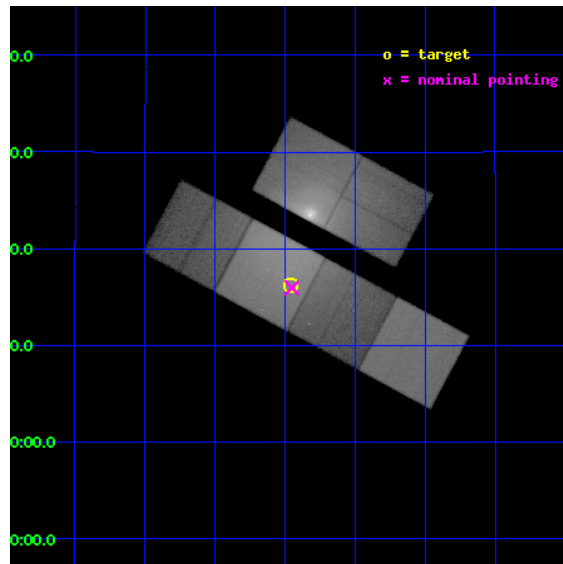
L2 Processing Date : Jun 24 2012

Contents

1	Front	2
2	OBI	3
2.1	OBI	3
2.1.1	Images	3
2.1.2	Bias	3
2.1.3	Parameters	4
2.1.4	Events	4
2.2	Compared Parameters	5
2.3	Aspect	6
2.4	Star Slots	9
2.4.1	Slot 3	9
2.4.2	Slot 4	10
2.4.3	Slot 5	11
2.4.4	Slot 6	12
2.4.5	Slot 7	13
2.5	FID Slots	14
2.5.1	Slot 0	14
2.5.2	Slot 1	15
2.5.3	Slot 2	16
A	Summary	17
A.1	Status	17
A.2	Comments	17

1 Front

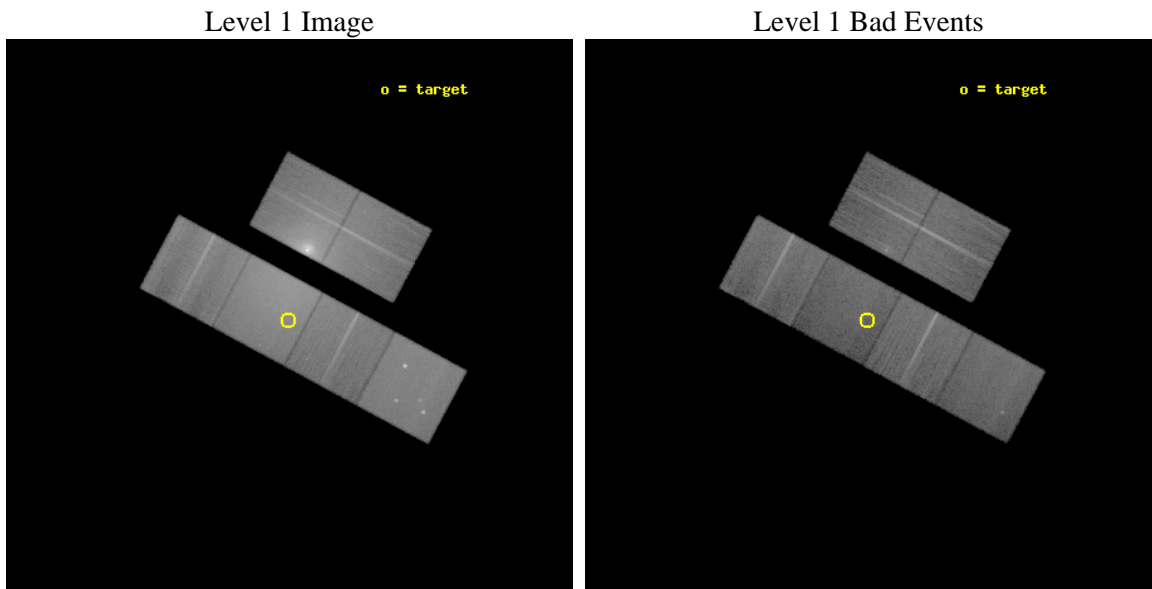
seq_num	900918	Sequence number
obs_id	11783	Observation id
title	COMBH: Chandra Observations of M-sigma Black Holes	Proposal title
observer	Dr. Kayhan Gultekin	Principal investigator
object	NGC4486A	Source name
dtycycle	0	
cycle	P	events from which exps? Prim/Second/Both
ra_targ	187.740417	Observer's specified target RA [deg]
dec_targ	12.270361	Observer's specified target Dec [deg]
ra_nom	187.73791498428	Nominal RA [deg]
dec_nom	12.266161814787	Nominal Dec [deg]
roll_nom	208.15715182494	Nominal Roll [deg]
revision	2	Processing version of data
ontime	29049.517851293	Sum of GTIs [s]
livetime	28681.67536474	Livetime [s]
ontime2	29049.558891296	Sum of GTIs [s]
ontime3	29049.394731283	Sum of GTIs [s]
ontime5	29049.47681129	Sum of GTIs [s]
ontime6	29046.194800973	Sum of GTIs [s]
ontime7	29049.517851293	Sum of GTIs [s]
ontime8	29049.35369128	Sum of GTIs [s]
l2events	1168704	Number of level 2 events



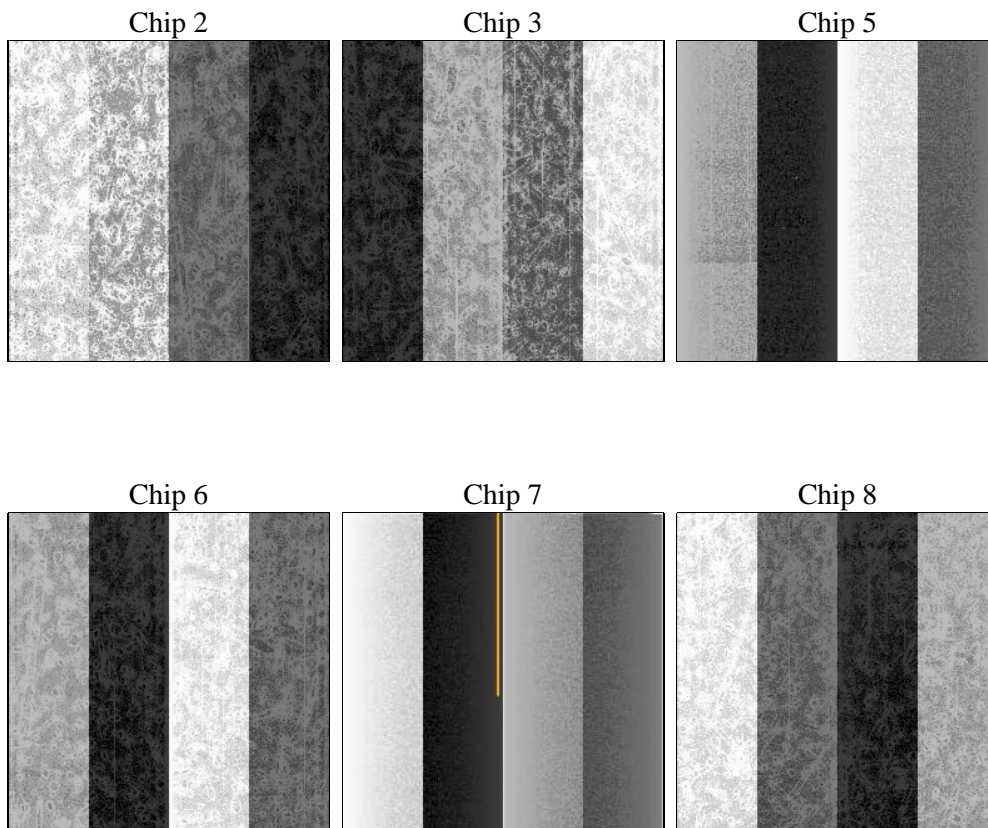
2 OBI

2.1 OBI

2.1.1 Images



2.1.2 Bias



2.1.3 Parameters

obi_num	1	Obi number	sched_exp_time	29000.000000	[s] Scheduled observation exposure time
ascdsver	8.4.5	Processing system revision	ontime	29049.517851293	Sum of GTIs [s]
caldbver	4.4.10	 	ontime2	29049.558891296	Sum of GTIs [s]
date	2012-06-24T09:02:06	Date and time of file creation	ontime3	29049.394731283	Sum of GTIs [s]
revision	2	Processing version of data	ontime5	29049.47681129	Sum of GTIs [s]
			ontime6	29046.194800973	Sum of GTIs [s]
			ontime7	29049.517851293	Sum of GTIs [s]
			ontime8	29049.35369128	Sum of GTIs [s]
			l1events	2399405	Number of level 1 events

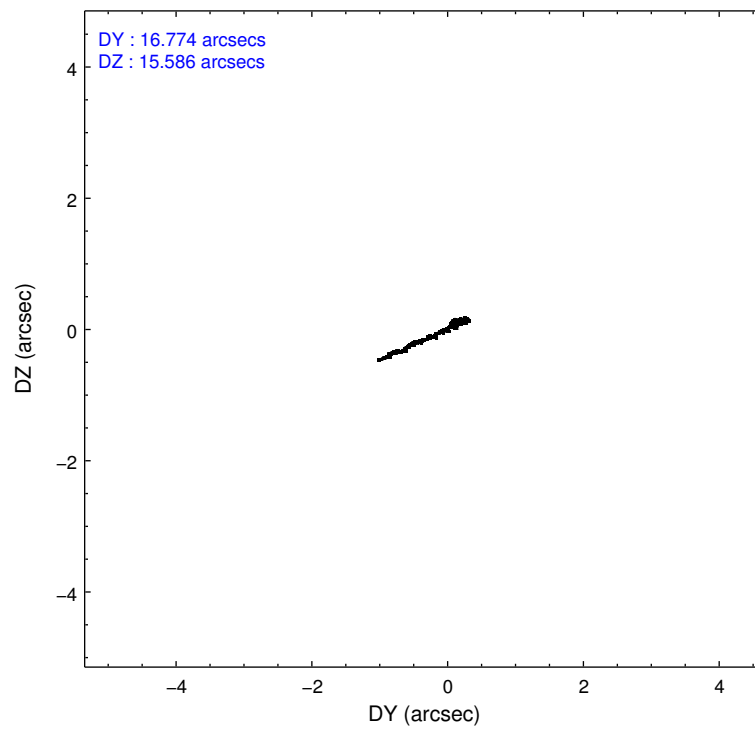
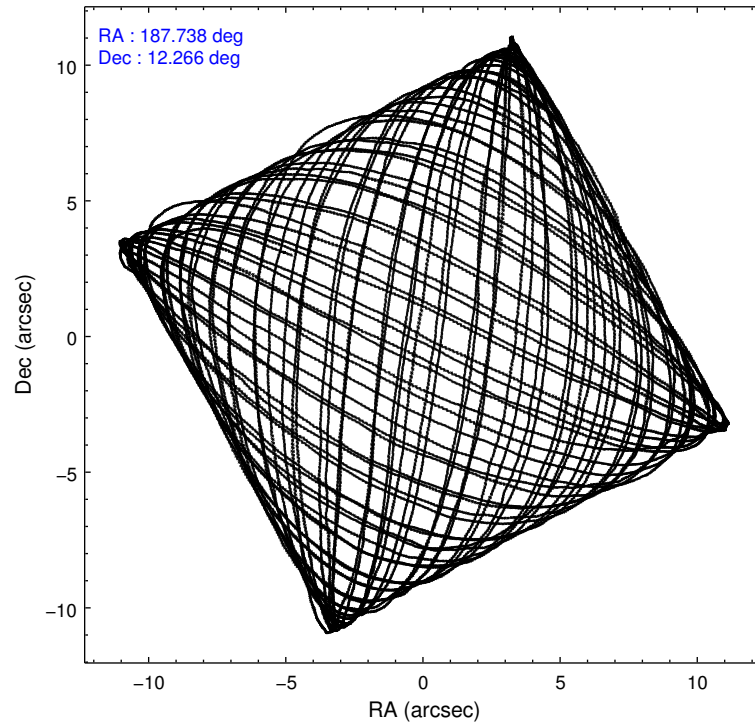
2.1.4 Events

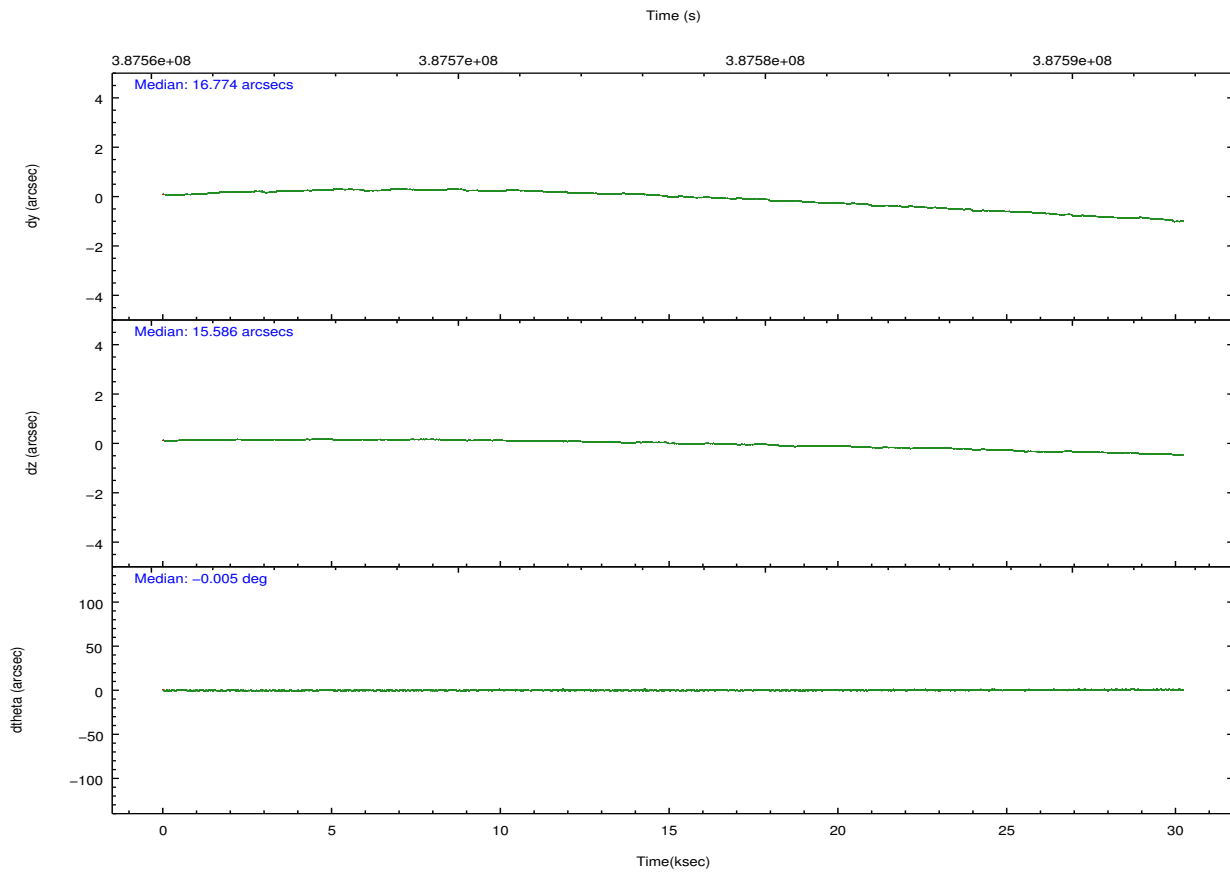
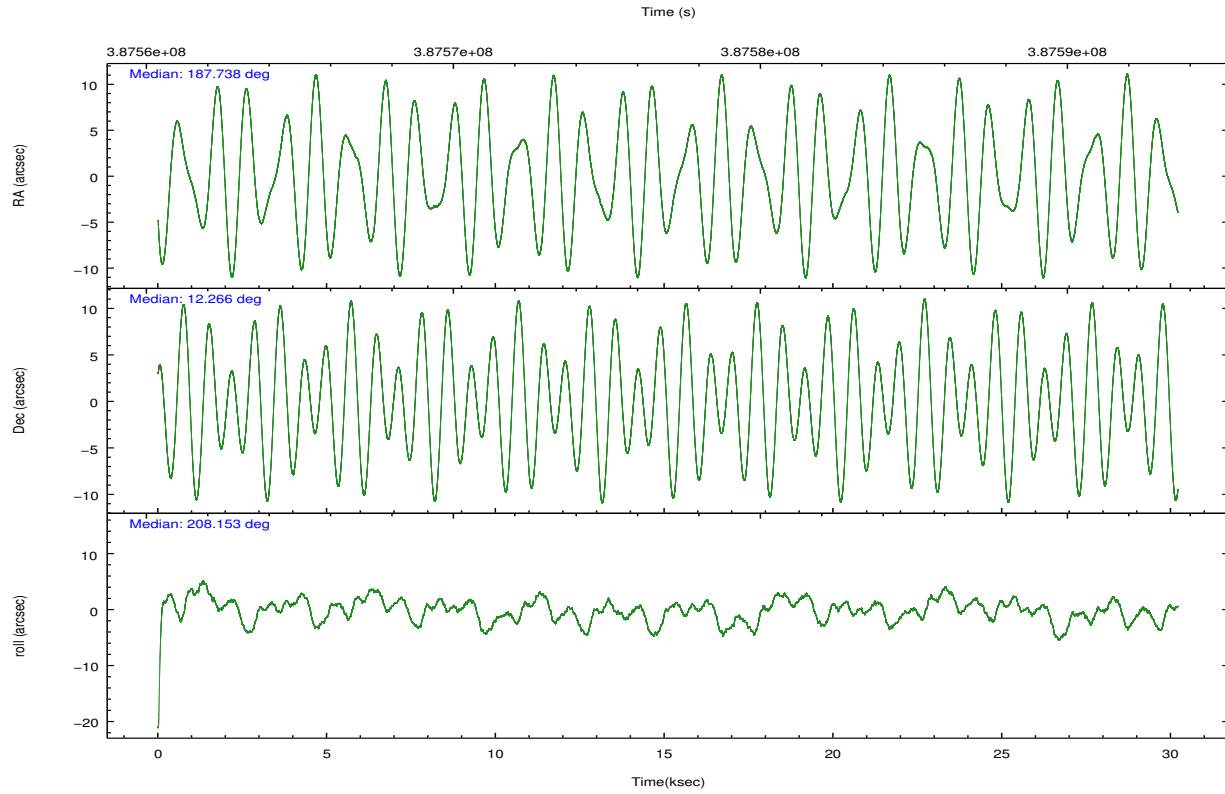
	ccd 2	ccd 3	ccd 5	ccd 6	ccd 7	ccd 8		ccd 2	ccd 3	ccd 5	ccd 6	ccd 7	ccd 8
level 1 events	354017	526614	365467	310049	506585	336673	grade 0 events	112159	268380	31682	78116	85262	67910
rejected events	206861	194882	167041	202036	147961	208493		31%	50%	8%	25%	16%	20%
rejected %	58%	37%	45%	65%	29%	61%	grade 1 events	791	1878	615	483	422	482
								0%	0%	0%	0%	0%	0%
							grade 2 events	16823	32861	58380	13376	87774	22173
								4%	6%	15%	4%	17%	6%
							grade 3 events	5789	10526	9628	4729	38331	9136
								1%	1%	2%	1%	7%	2%
							grade 4 events	5781	10544	8670	4822	37326	8630
								1%	2%	2%	1%	7%	2%
							grade 5 events	8755	10713	25319	9855	29317	14355
								2%	2%	6%	3%	5%	4%
							grade 6 events	6630	9488	90103	7002	109995	20381
								1%	1%	24%	2%	21%	6%
							grade 7 events	197289	182224	141070	191666	118158	193606
								55%	34%	38%	61%	23%	57%

2.2 Compared Parameters

Parameter	Planned	Actual	Parameter	Planned	Actual
Instrument	ACIS	ACIS	Obspar format version number	7	7
Detector	ACIS-235678	ACIS-235678	Obspar file type	PREDICTED	ACTUAL
Grating	NONE	NONE	Obspar update status	NONE	UPDATED
Data mode	FAINT	FAINT	CCD I0 on	N	N
Observation mode	POINTING	POINTING	CCD I1 on	N	N
[deg] Pointing RA	187.752358	187.7379149842841	CCD I2 on	O1	Y
[deg] Pointing Dec	12.289589	12.26616181478685	CCD I3 on	O2	Y
[deg] Pointing Roll	207.997457	208.1571518249439	CCD S0 on	N	N
[mm] SIM focus pos	-0.684267	-0.6828225247311905	CCD S1 on	Y	Y
[mm] SIM defocus	0	0.001444936568705701	CCD S2 on	Y	Y
[mm] SIM translation stage pos	-190.132523	-190.1400660498719	CCD S3 on	Y	Y
[mm] SIM translation stage offset	0	0.00754346686406393	CCD S4 on	Y	Y
[s] Observation start time (MET)	387563109.184000	387561593.21141	CCD S5 on	N	N
Observation start date	2010-04-13T16:24:03	2010-04-13T15:59:53	Number of optional ACIS chips dropped	0	0
[s] Observation end time (MET)	387592109.184000	387592929.513	On-chip summing requested	N	N
Observation end date	2010-04-14T00:27:23	2010-04-14T00:42:09	Subarray requested	NONE	NONE
Read mode	TIMED	TIMED	Alternating exposures requested	N	N
			[s] Primary exposure time	0.000000	3.2

2.3 Aspect



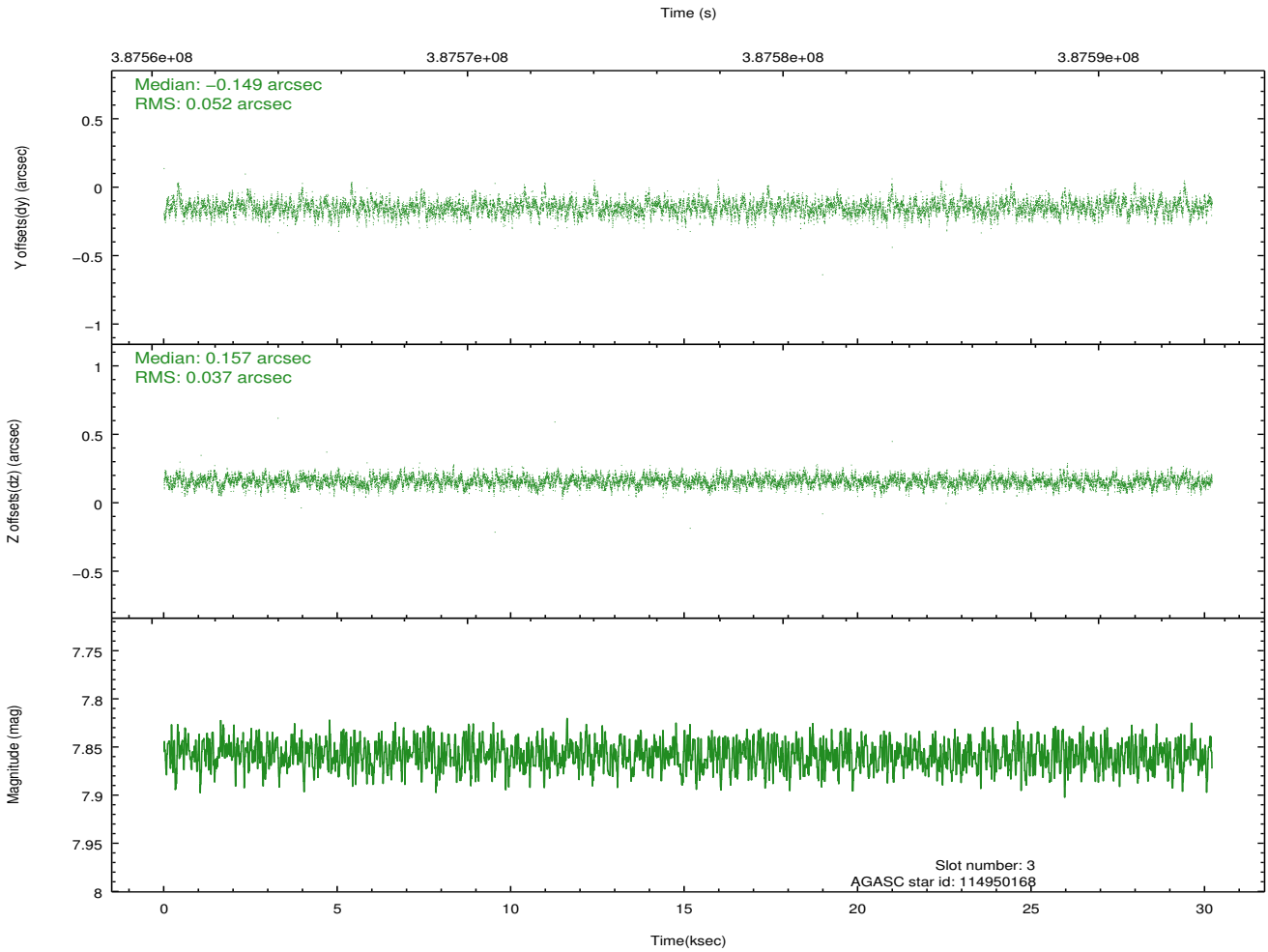
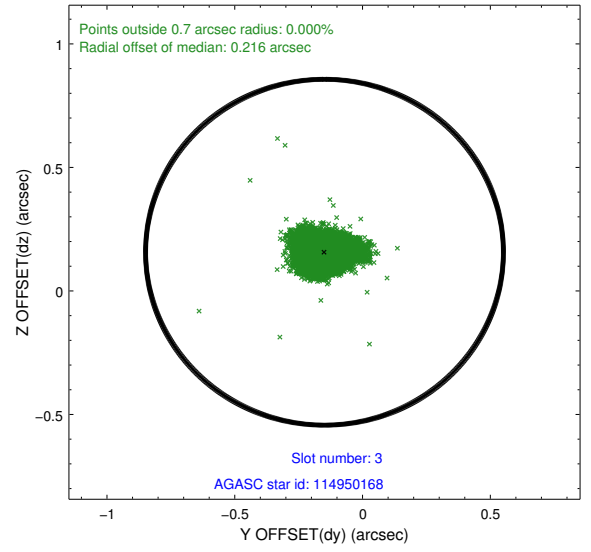
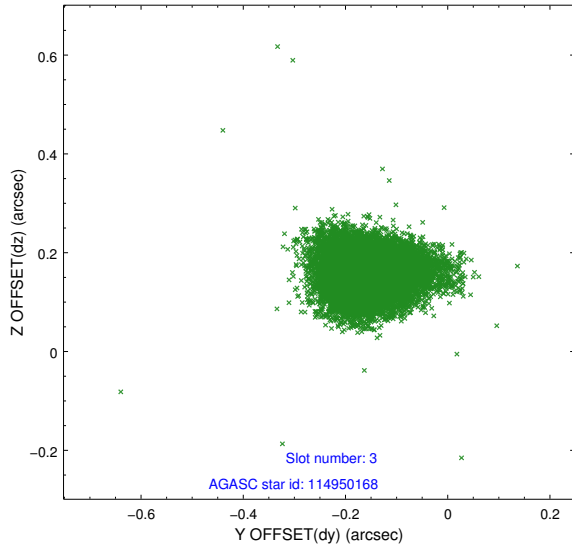


Slot Statistics

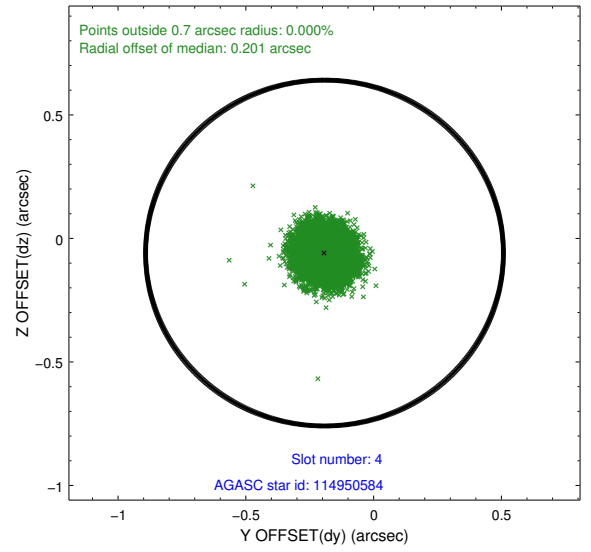
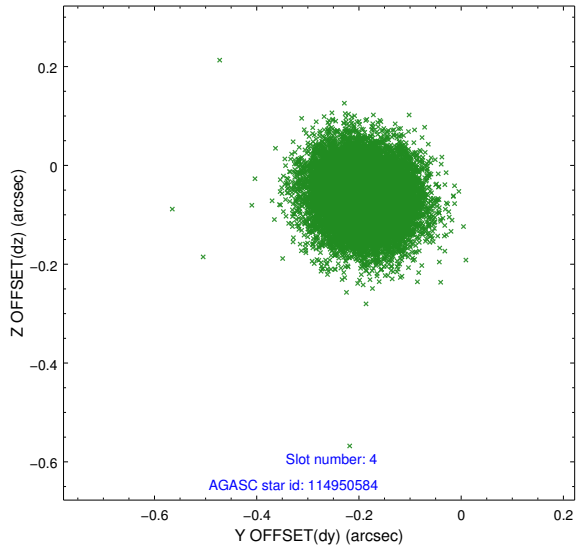
slot	status	id	mag	n_pts	med_dy	med_dz	dr1	dr2	ra	dec	mean_y	mean_z
0	FID	ACIS-S-2	6.92	7369	-0.096	-0.020	0.011	0.020	0.000000	0.000000	-769.74	-1736.96
1	FID	ACIS-S-4	6.99	7369	0.191	0.051	0.009	0.018	0.000000	0.000000	2143.78	171.55
2	FID	ACIS-S-5	7.03	7369	-0.127	-0.022	0.009	0.017	0.000000	0.000000	-1822.53	165.19
3	GUIDE	114950168	7.86	14729	-0.149	0.157	0.065	0.112	187.143398	12.117441	2182.60	-460.51
4	GUIDE	114950584	9.18	14717	-0.192	-0.059	0.078	0.126	187.487323	11.827248	1606.23	1030.90
5	GUIDE	114952792	9.50	14703	-0.150	0.051	0.110	0.176	187.070263	12.344747	2024.82	-1303.78
6	GUIDE	114952824	8.57	14723	0.040	0.088	0.078	0.123	187.703904	12.486727	-181.87	-706.64
7	GUIDE	114955056	8.34	14733	0.448	-0.238	0.064	0.102	187.914001	12.127854	-228.32	780.76

2.4 Star Slots

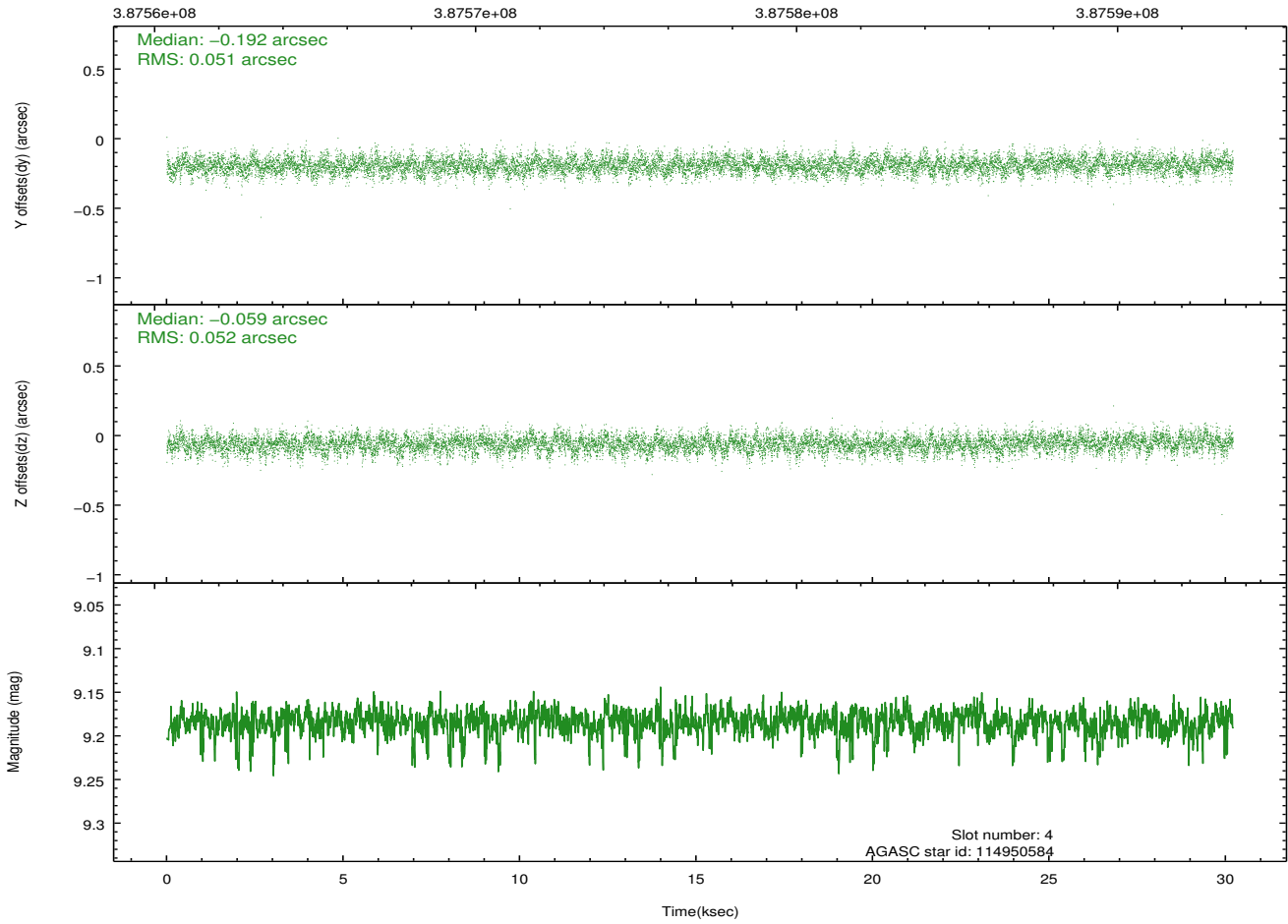
2.4.1 Slot 3



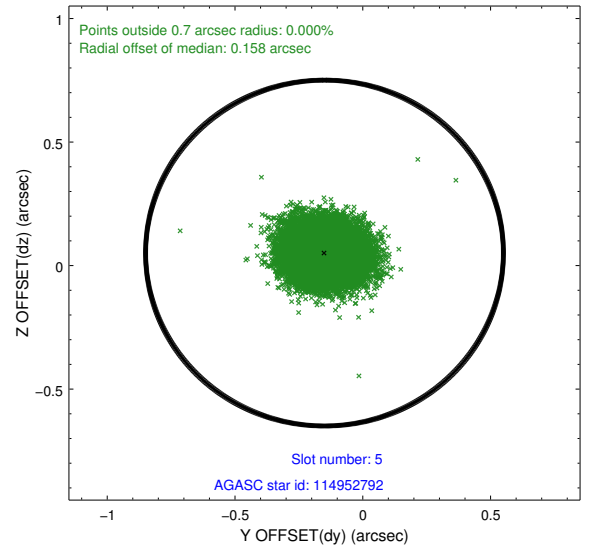
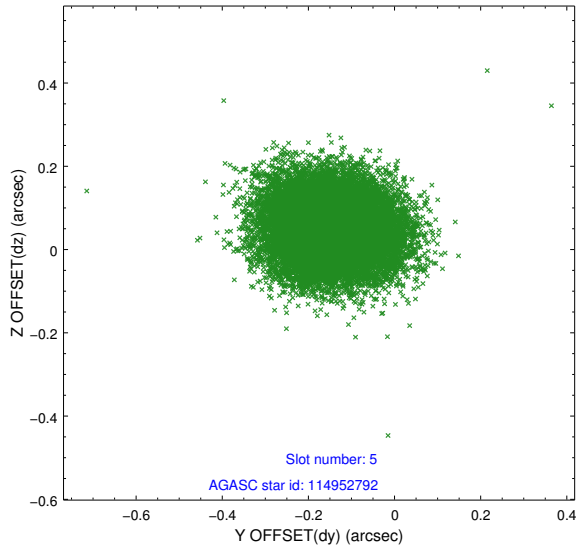
2.4.2 Slot 4



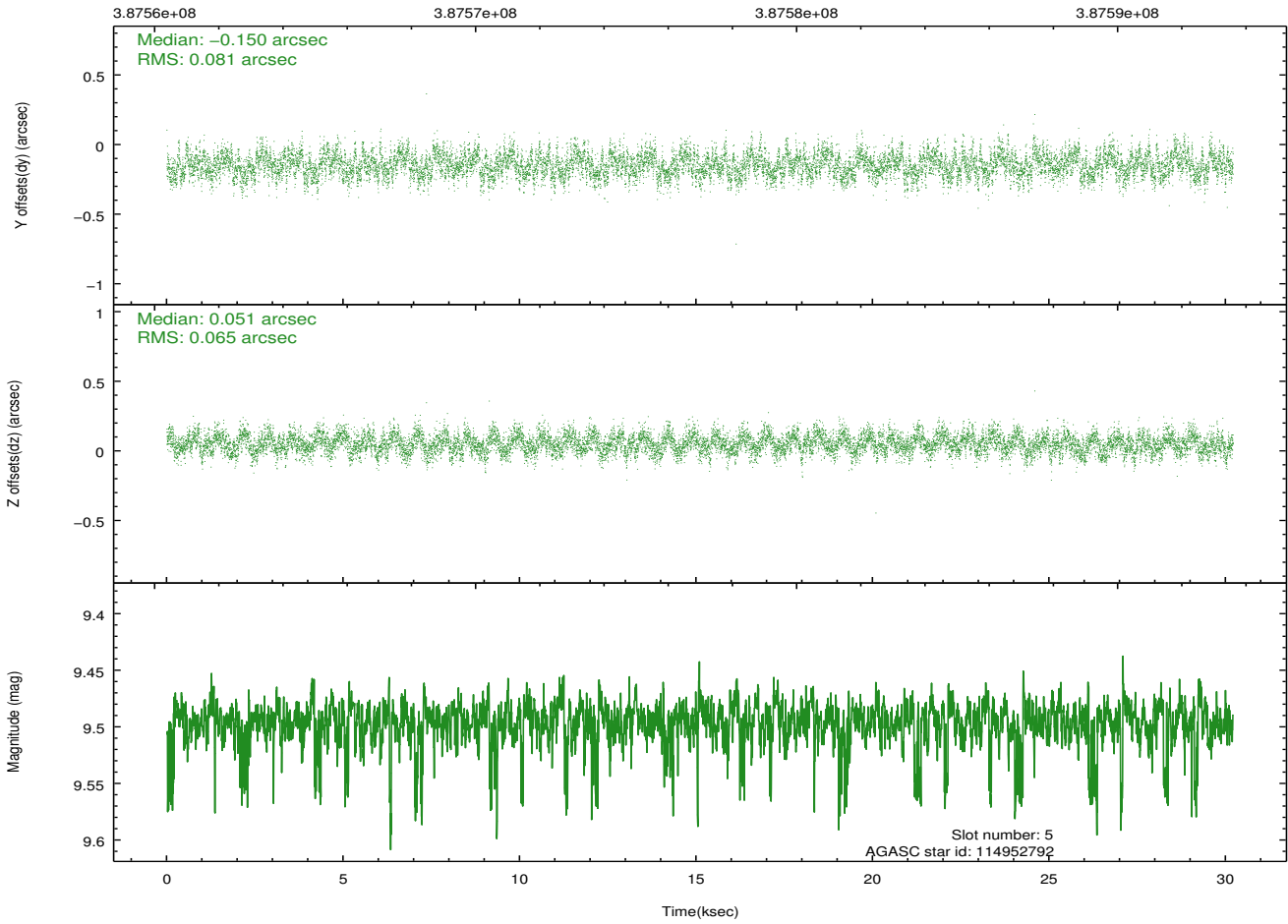
Time (s)



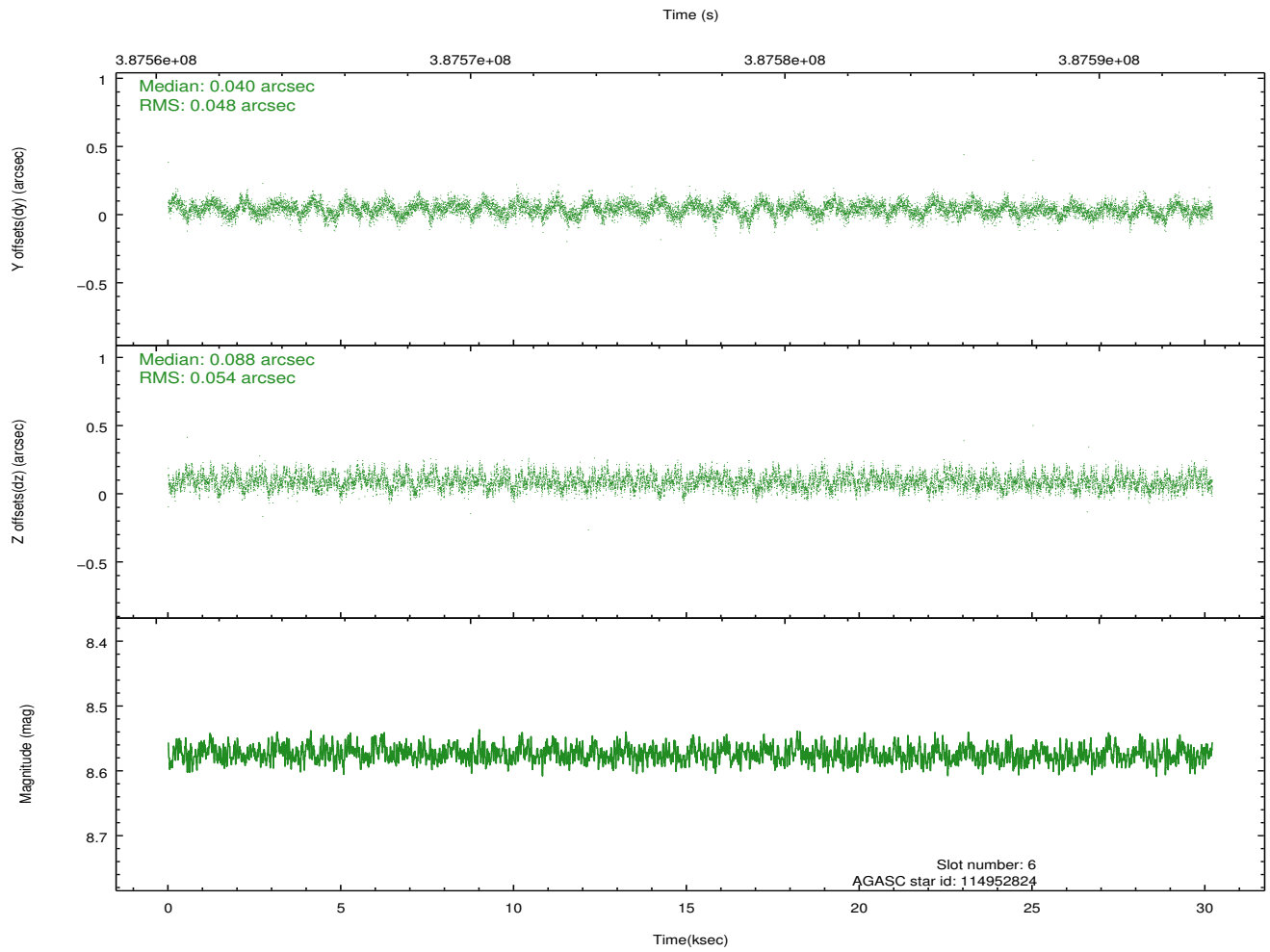
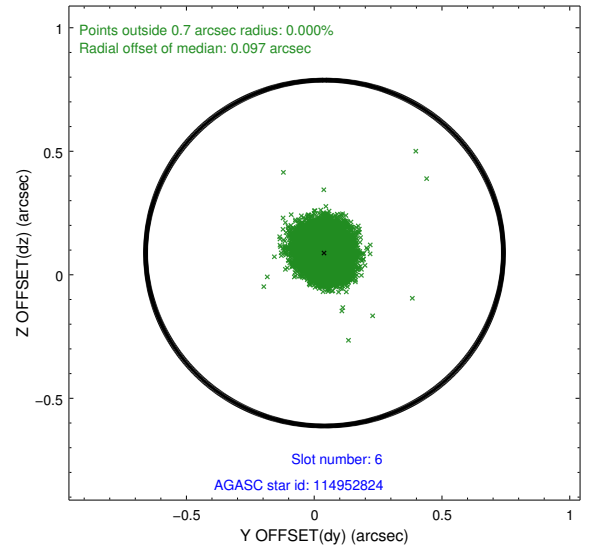
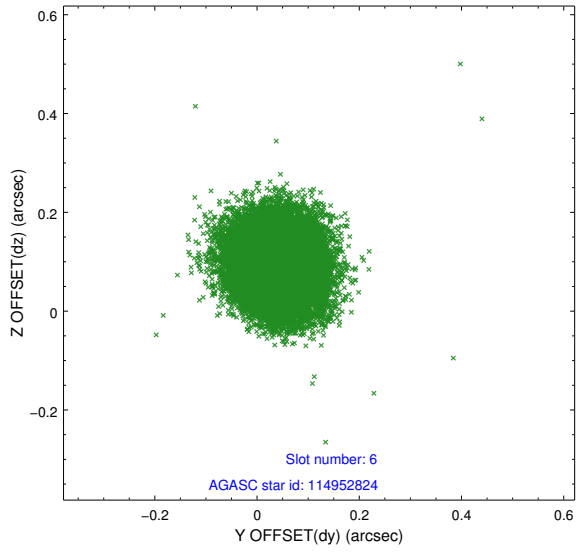
2.4.3 Slot 5



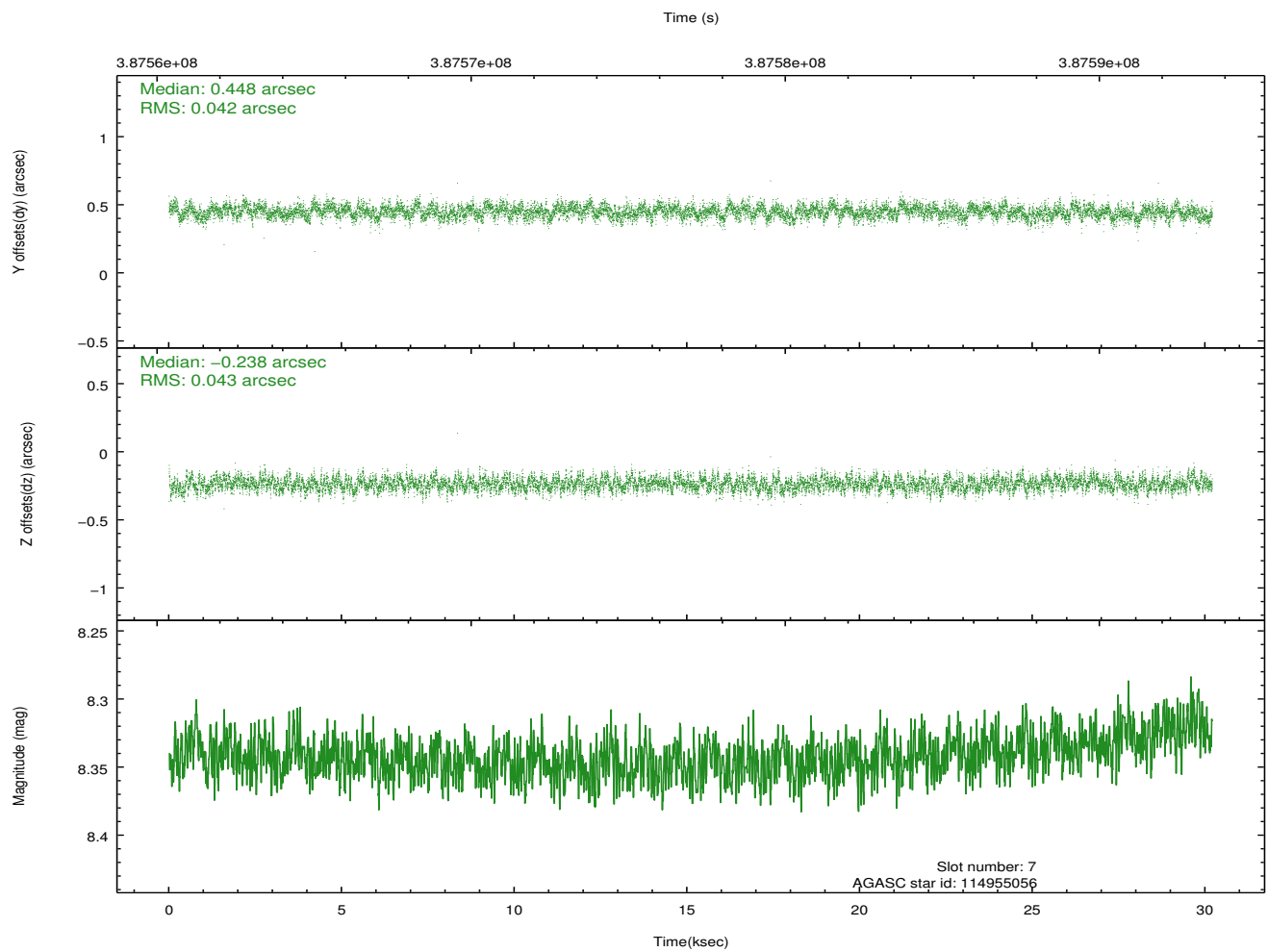
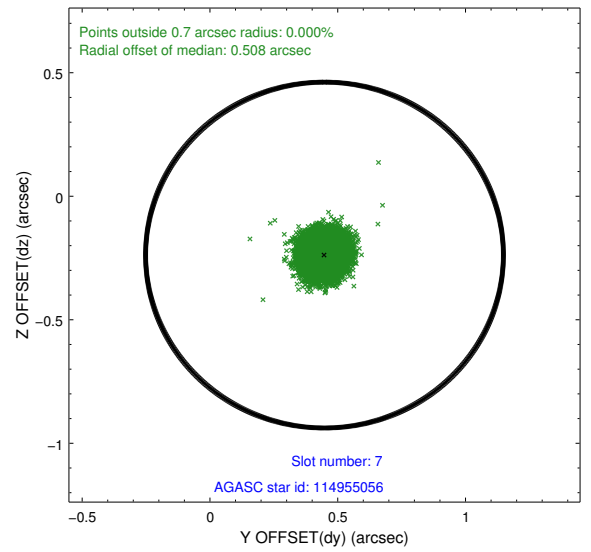
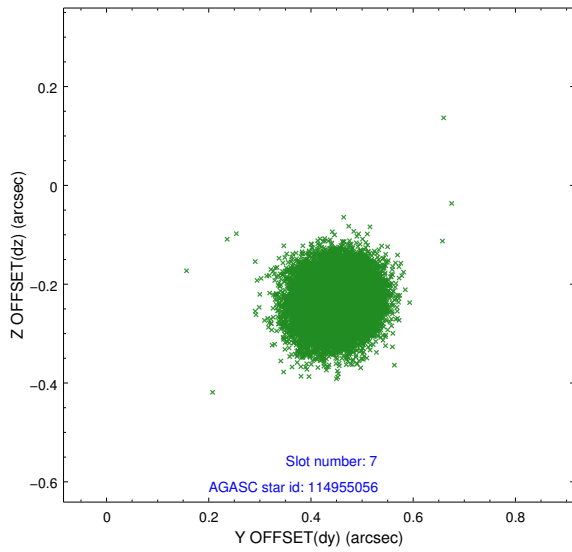
Time (s)



2.4.4 Slot 6

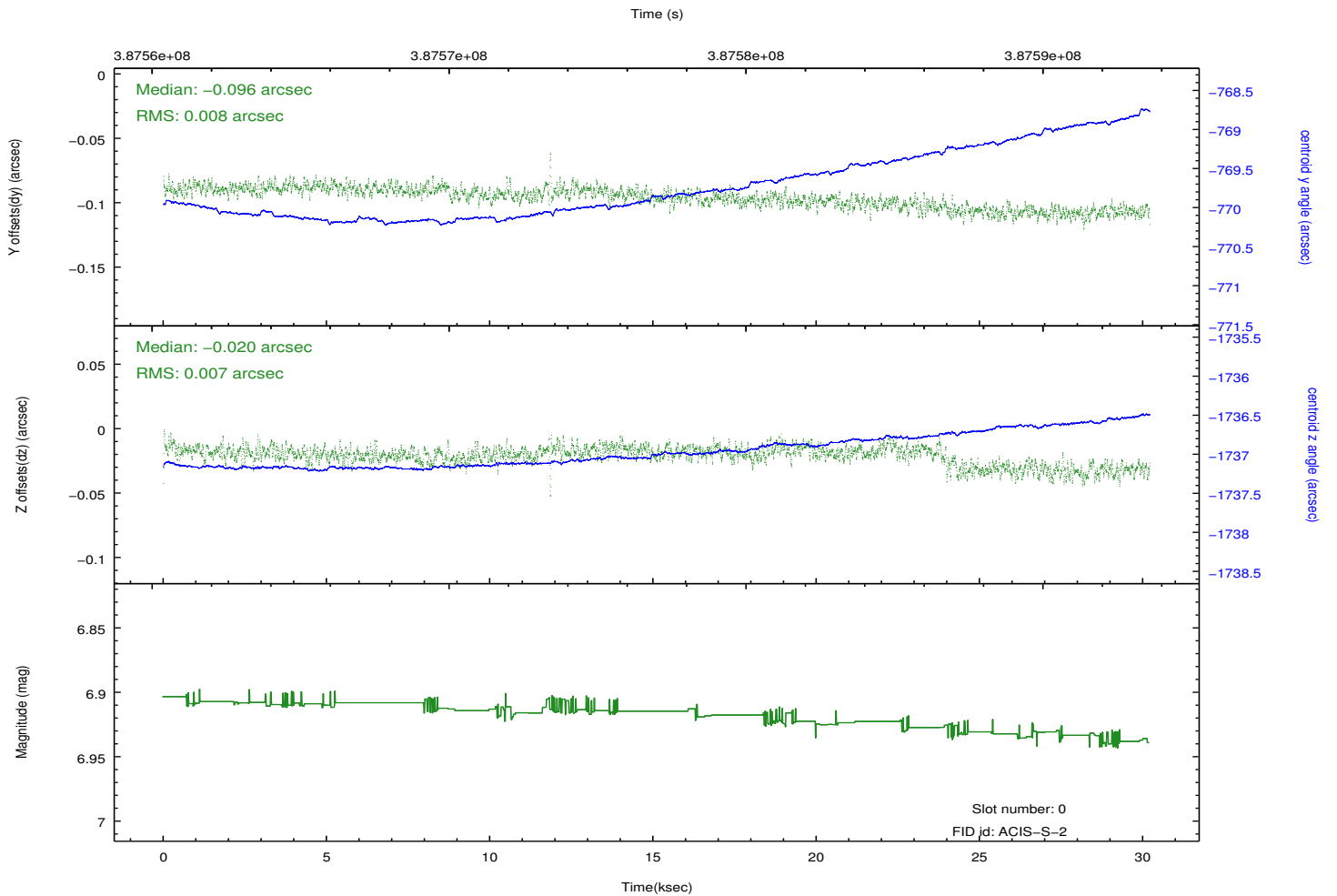
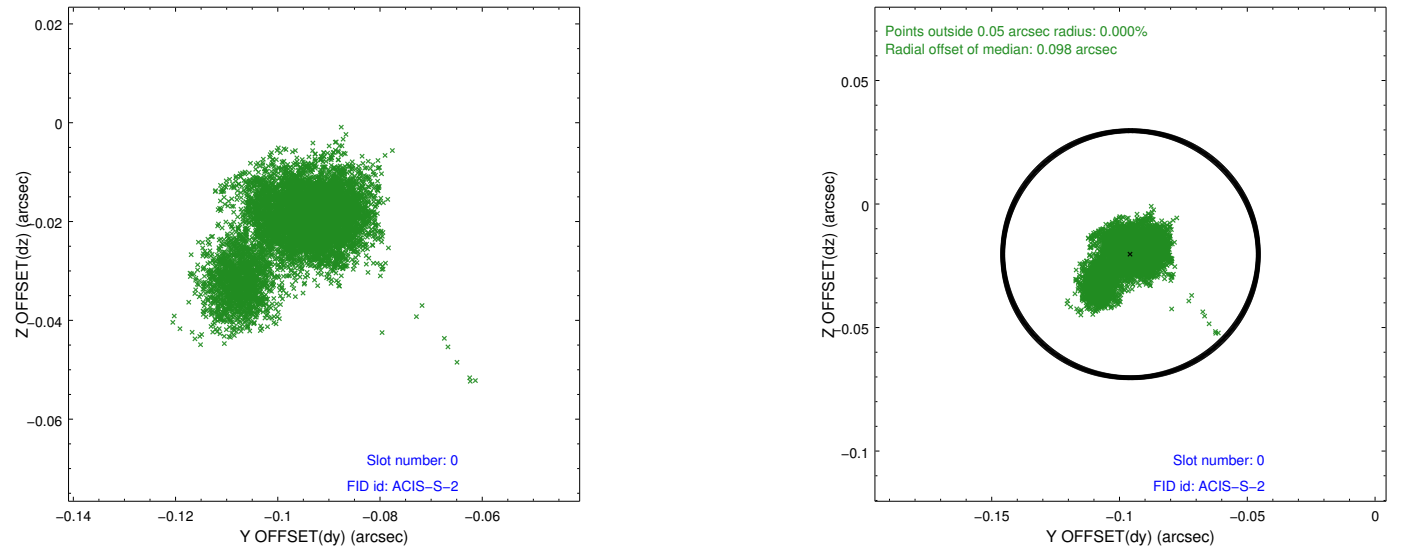


2.4.5 Slot 7

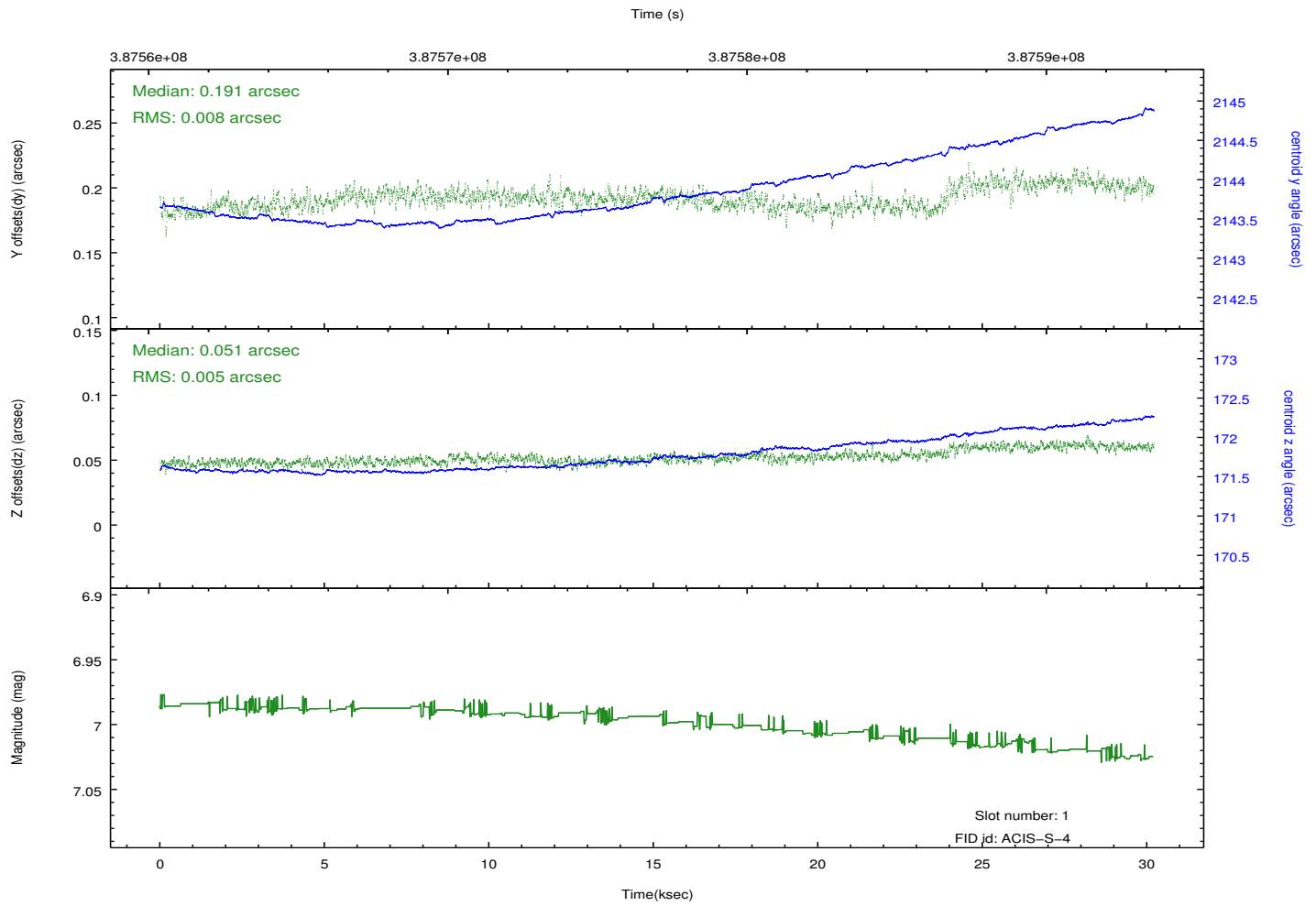
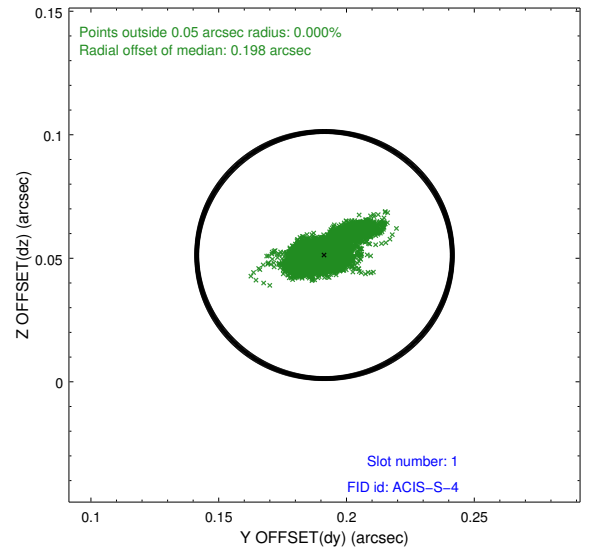
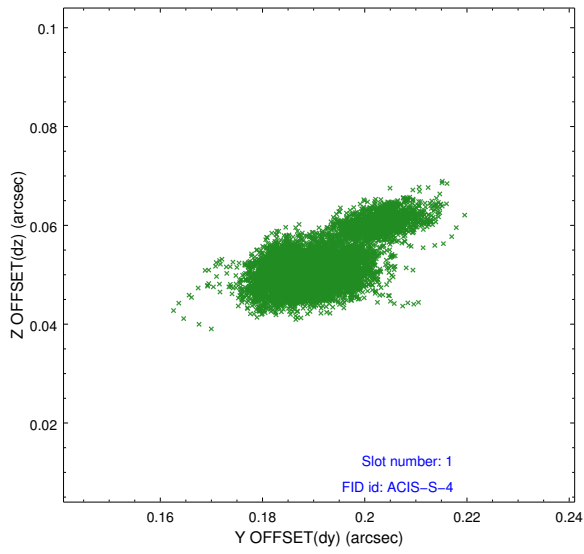


2.5 FID Slots

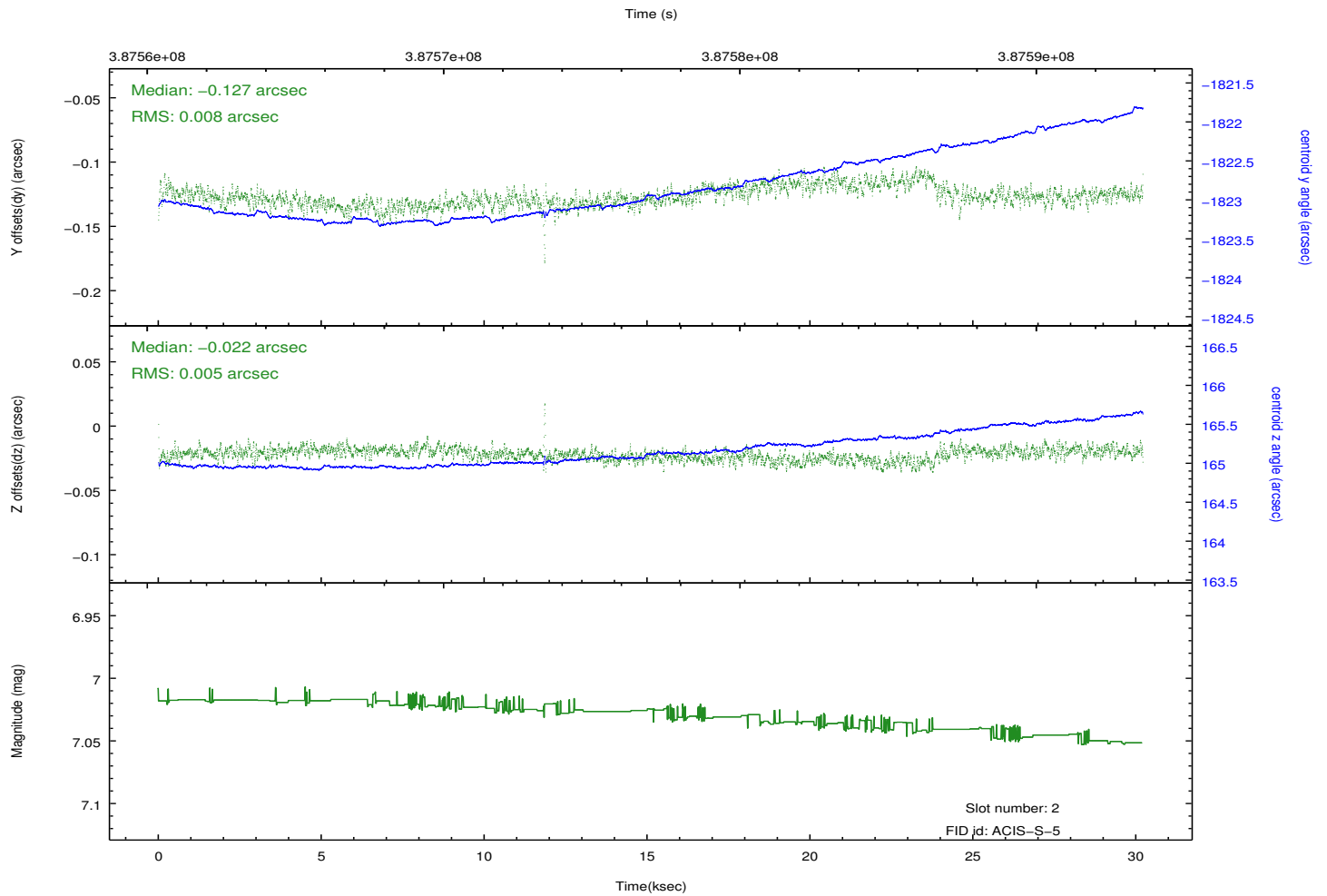
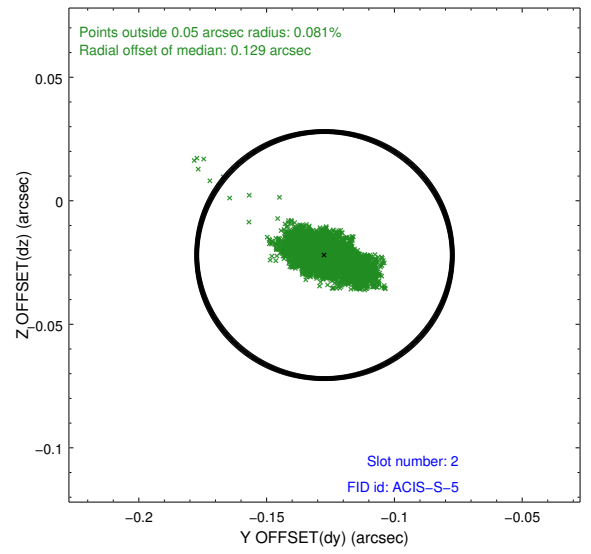
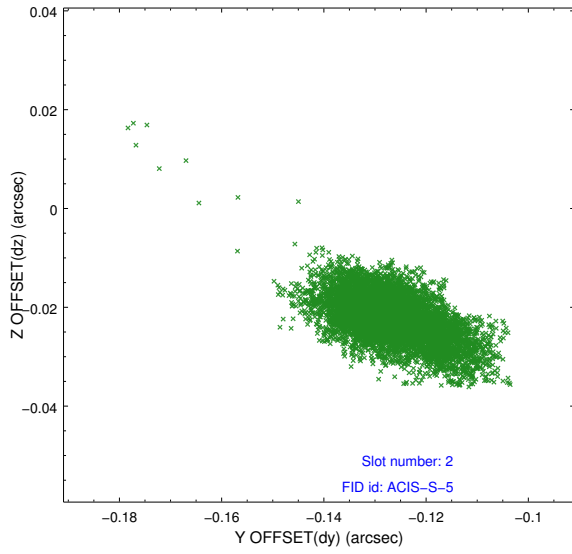
2.5.1 Slot 0



2.5.2 Slot 1



2.5.3 Slot 2



A Summary

A.1 Status

V&V Scientist	Beth Sundheim
V&V Date (YYYY-MM-DD)	2012.07.01
V&V Edition	1
V&V Disposition and Status	OK
V&V Charge Time	29.049517854452

A.2 Comments

Joint proposal with NRAO.