

V&V Reference Report

L2 ASCDS Version : 8.4.5

Observation 12003 - L2 Version 2
Chandra X-Ray Center

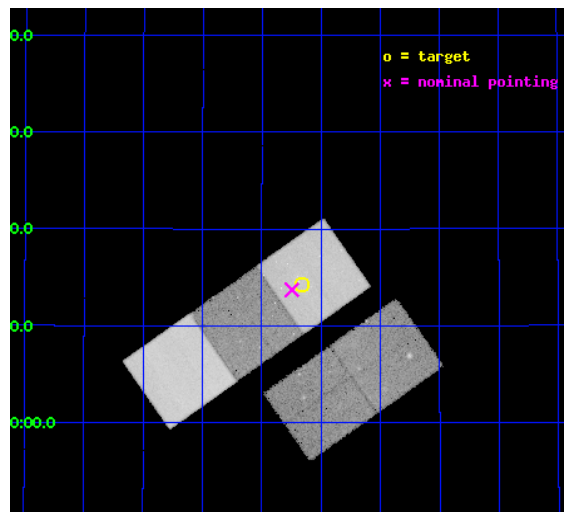
L2 Processing Date : Jun 15 2012

Contents

1	Front	2
2	OBI	3
2.1	OBI	3
2.1.1	Images	3
2.1.2	Bias	3
2.1.3	Parameters	4
2.1.4	Events	4
2.2	Compared Parameters	5
2.3	Aspect	6
2.4	Star Slots	9
2.4.1	Slot 3	9
2.4.2	Slot 4	10
2.4.3	Slot 5	11
2.4.4	Slot 6	12
2.4.5	Slot 7	13
2.5	FID Slots	14
2.5.1	Slot 0	14
2.5.2	Slot 1	15
2.5.3	Slot 2	16
A	Summary	17
A.1	Status	17
A.2	Comments	17

1 Front

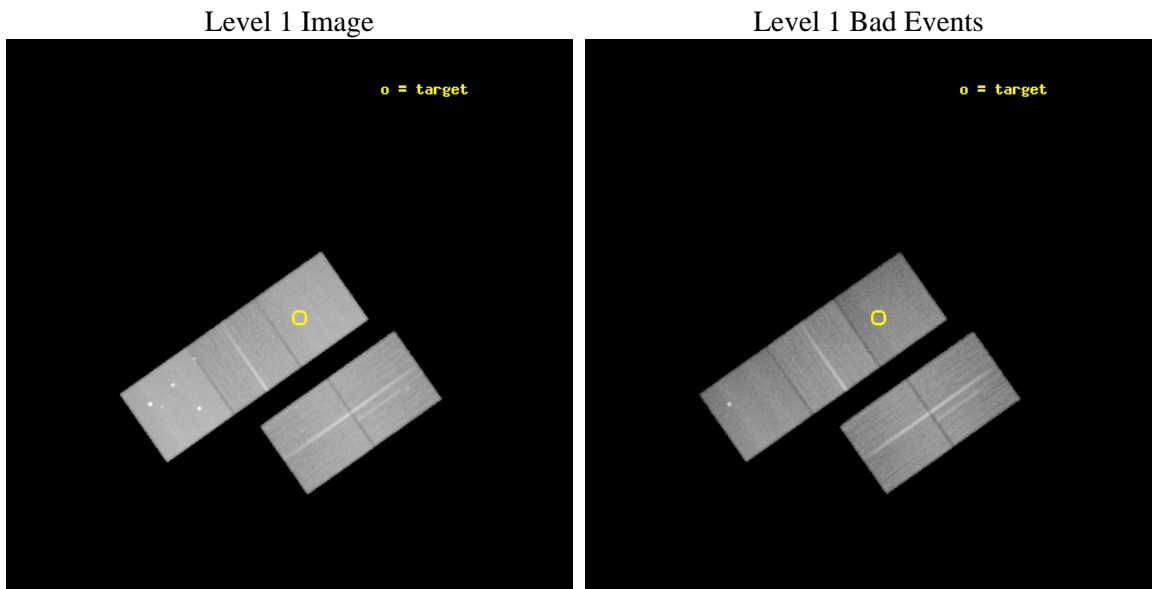
seq_num	800822	Sequence number
obs_id	12003	Observation id
title	Characterisation of ISCS J1438+3414, a z=1.41 galaxy cluster free of X-ray selection bias	Proposal title
observer	Dr. Stefano Andreon	Principal investigator
object	ISCS J1438+3414	Source name
dtcycle	0	
cycle	P	events from which exps? Prim/Second/Both
ra_targ	219.539167	Observer's specified target RA [deg]
dec_targ	34.238611	Observer's specified target Dec [deg]
ra_nom	219.56148871995	Nominal RA [deg]
dec_nom	34.228692915547	Nominal Dec [deg]
roll_nom	324.89216554189	Nominal Roll [deg]
revision	2	Processing version of data
ontime	43700.700336099	Sum of GTIs [s]
livetime	43129.71851422	Livetime [s]
ontime2	43691.277424991	Sum of GTIs [s]
ontime3	43694.418405414	Sum of GTIs [s]
ontime5	43700.700336099	Sum of GTIs [s]
ontime6	43700.700336099	Sum of GTIs [s]
ontime7	43700.700336099	Sum of GTIs [s]
l2events	547230	Number of level 2 events



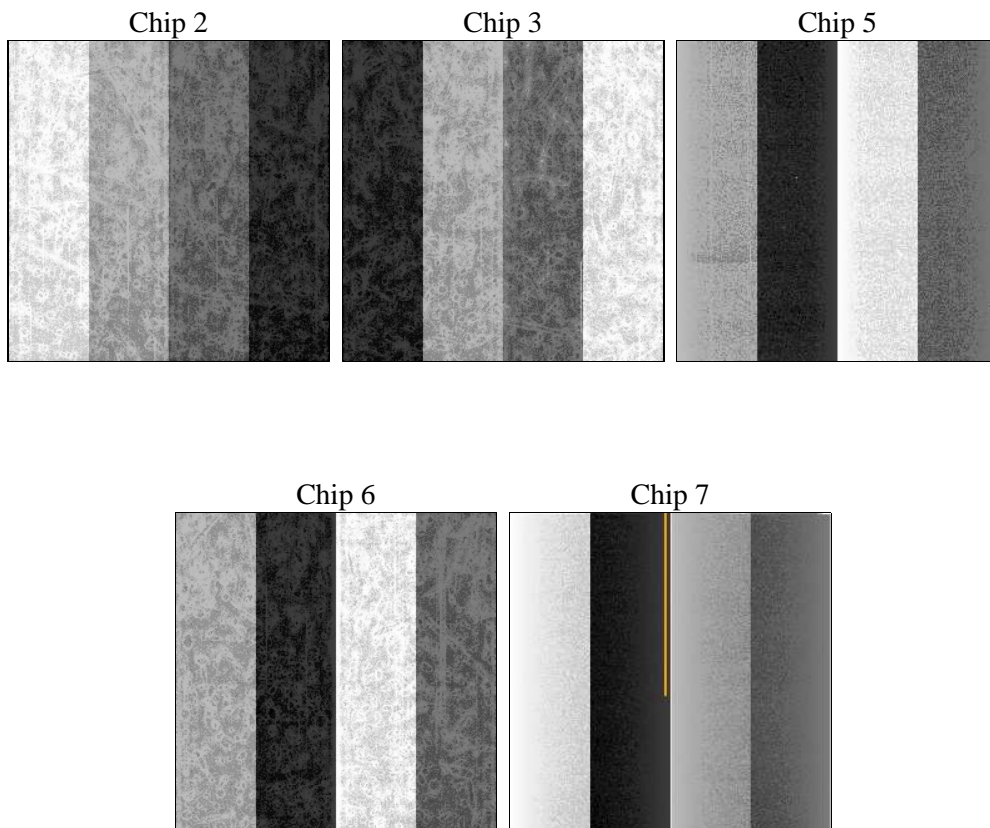
2 OBI

2.1 OBI

2.1.1 Images



2.1.2 Bias



2.1.3 Parameters

obi_num	0	Obi number	sched_exp_time	43560.128000	[s] Scheduled observation exposure time
ascdsver	8.4.5	Processing system revision	ontime	43700.700336099	Sum of GTIs [s]
caldsver	4.4.10	 	ontime2	43691.277424991	Sum of GTIs [s]
date	2012-06-15T14:09:14	Date and time of file creation	ontime3	43694.418405414	Sum of GTIs [s]
revision	2	Processing version of data	ontime5	43700.700336099	Sum of GTIs [s]
			ontime6	43700.700336099	Sum of GTIs [s]
			ontime7	43700.700336099	Sum of GTIs [s]
			l1events	2197993	Number of level 1 events

2.1.4 Events

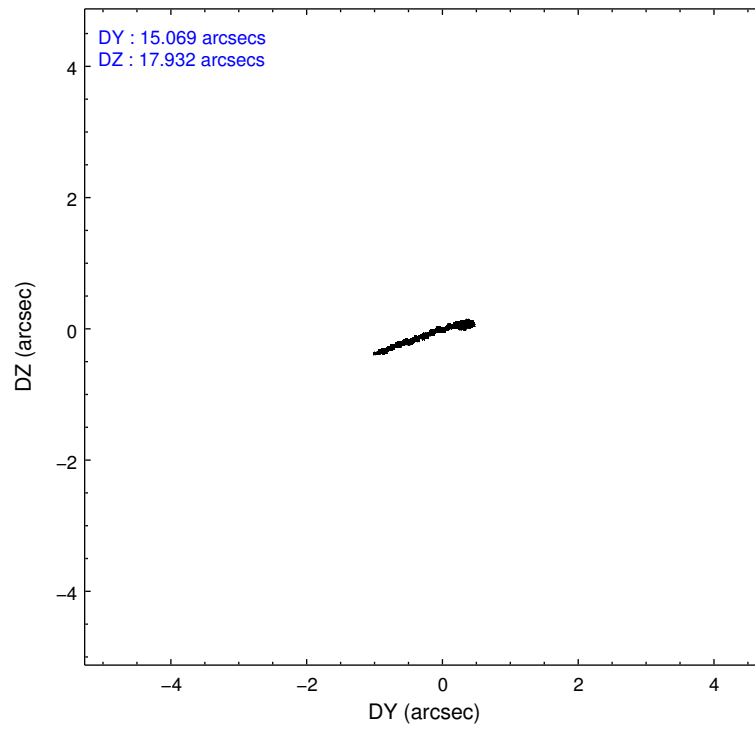
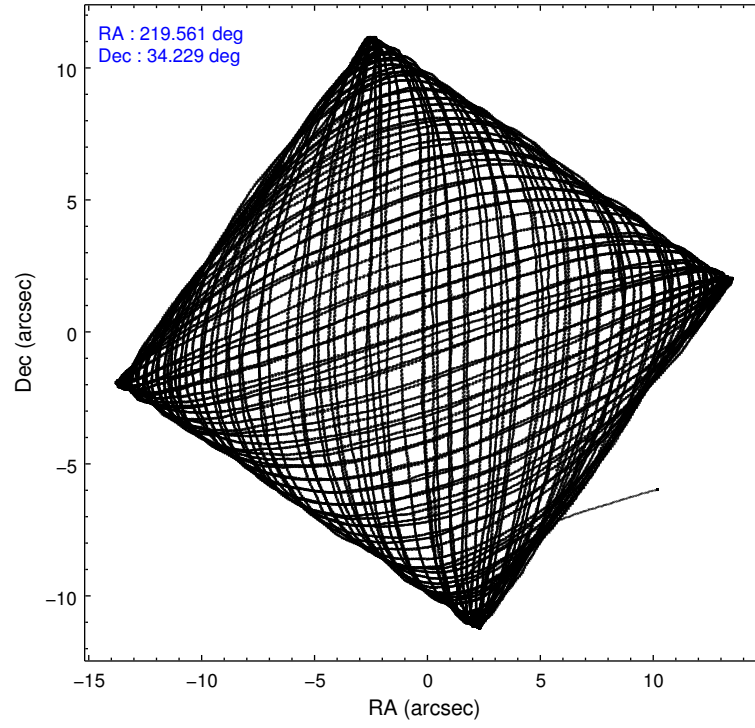
	ccd 2	ccd 3	ccd 5	ccd 6	ccd 7
level 1 events	400462	372958	577311	396254	451008
rejected events	362524	335871	292717	355184	251258
rejected %	90%	90%	50%	89%	55%

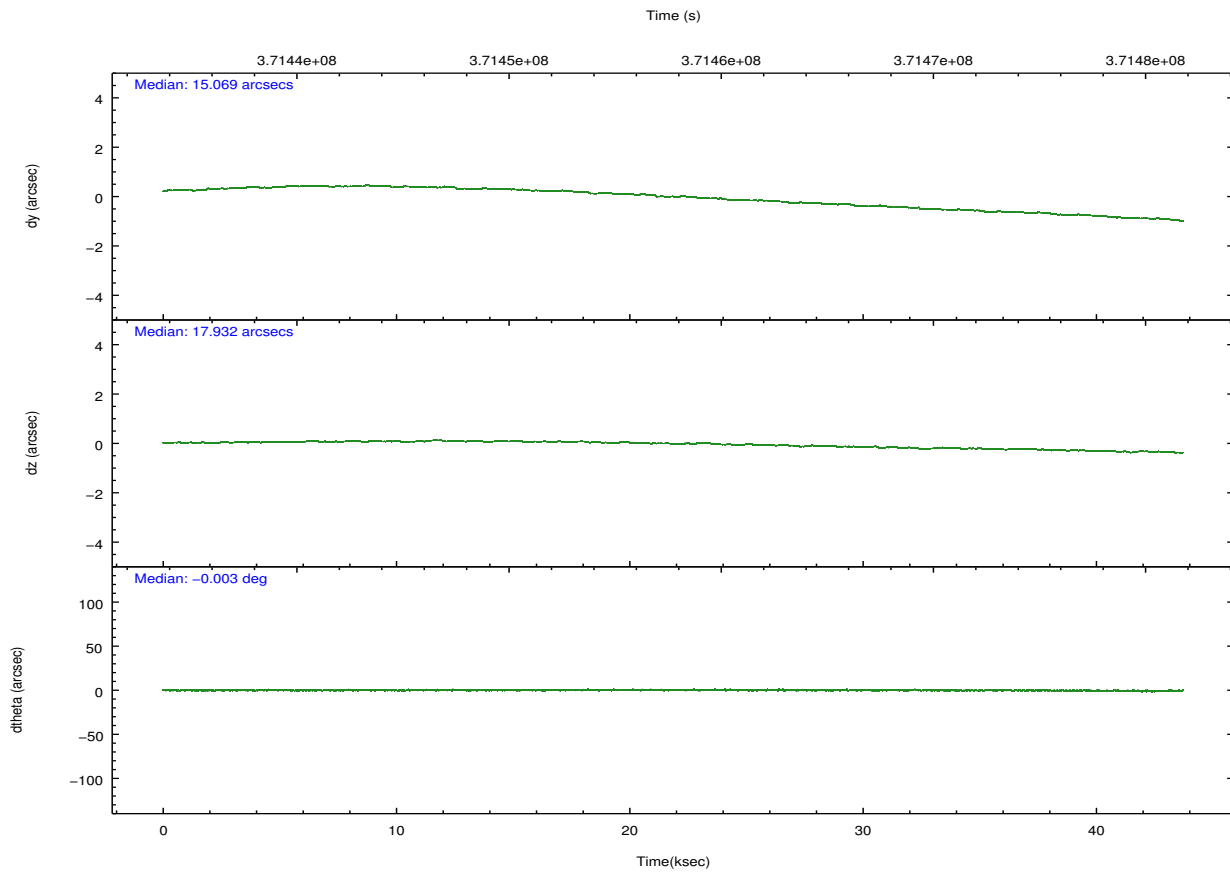
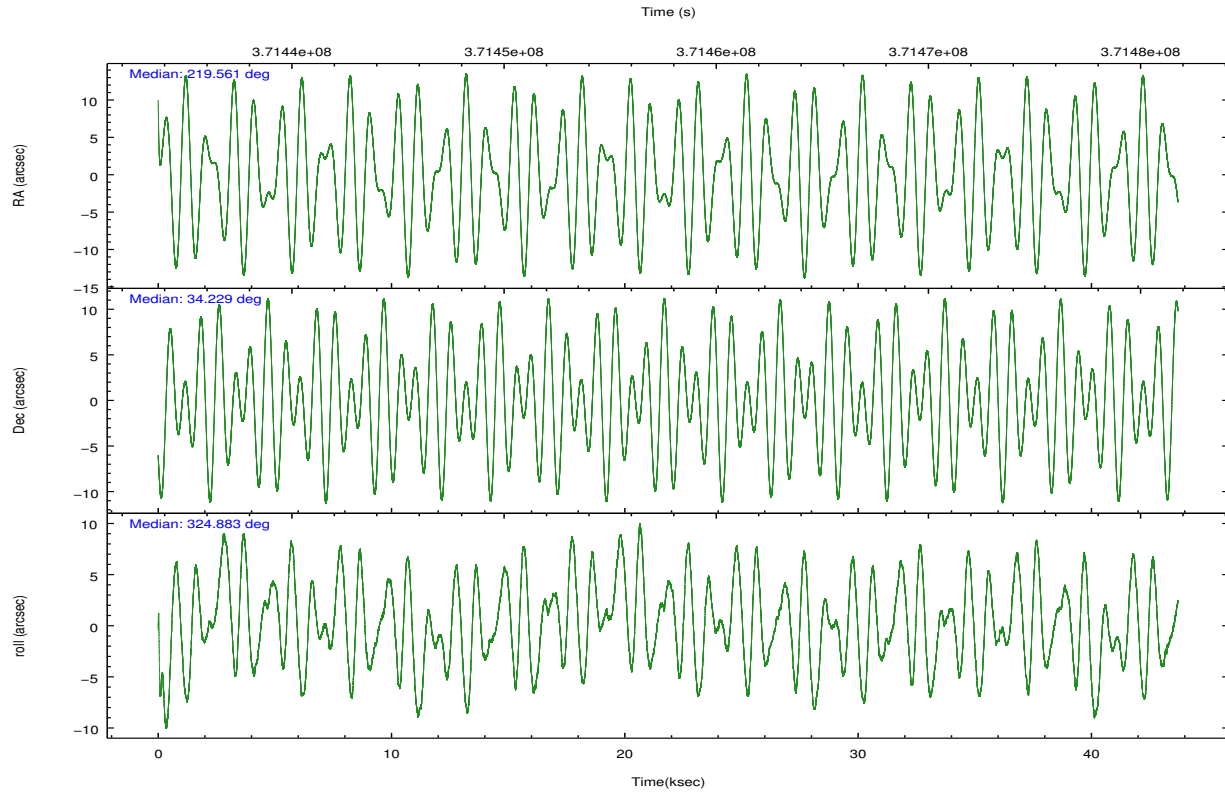
	ccd 2	ccd 3	ccd 5	ccd 6	ccd 7
grade 0 events	14194	13541	36667	14682	19396
	3%	3%	6%	3%	4%
grade 1 events	253	214	4290	208	611
	0%	0%	0%	0%	0%
grade 2 events	9218	8381	88862	9462	42024
	2%	2%	15%	2%	9%
grade 3 events	3985	4314	11211	4472	18109
	0%	1%	1%	1%	4%
grade 4 events	4294	4133	10869	4388	18237
	1%	1%	1%	1%	4%
grade 5 events	12966	16098	43247	16211	46978
	3%	4%	7%	4%	10%
grade 6 events	7258	7650	144405	9144	107203
	1%	2%	25%	2%	23%
grade 7 events	348294	318627	237760	337687	198450
	86%	85%	41%	85%	44%

2.2 Compared Parameters

Parameter	Planned	Actual	Parameter	Planned	Actual
Instrument	ACIS	ACIS	Obspar format version number	7	7
Detector	ACIS-23567	ACIS-23567	Obspar file type	PREDICTED	ACTUAL
Grating	NONE	NONE	Obspar update status	NONE	UPDATED
Data mode	VFAINT	VFAINT	CCD I0 on	N	N
Observation mode	POINTING	POINTING	CCD I1 on	N	N
[deg] Pointing RA	219.528516	219.5614887199471	CCD I2 on	O1	Y
[deg] Pointing Dec	34.230761	34.22869291554689	CCD I3 on	Y	Y
[deg] Pointing Roll	324.754079	324.8921655418936	CCD S0 on	N	N
[mm] SIM focus pos	-0.684267	-0.6828225247311905	CCD S1 on	Y	Y
[mm] SIM defocus	0	0.001444936568705701	CCD S2 on	Y	Y
[mm] SIM translation stage pos	-190.132523	-190.1425803651734	CCD S3 on	Y	Y
[mm] SIM translation stage offset	0	0.01005778216563158	CCD S4 on	N	N
[s] Observation start time (MET)	371436019.184000	371434474.55825	CCD S5 on	N	N
Observation start date	2009-10-09T00:39:13	2009-10-09T00:14:34	Number of optional ACIS chips dropped	0	0
[s] Observation end time (MET)	371479579.184000	371479805.18554	On-chip summing requested	N	N
Observation end date	2009-10-09T12:45:13	2009-10-09T12:50:05	Subarray requested	NONE	NONE
Read mode	TIMED	TIMED	Alternating exposures requested	N	N
			[s] Primary exposure time	0.000000	3.1

2.3 Aspect



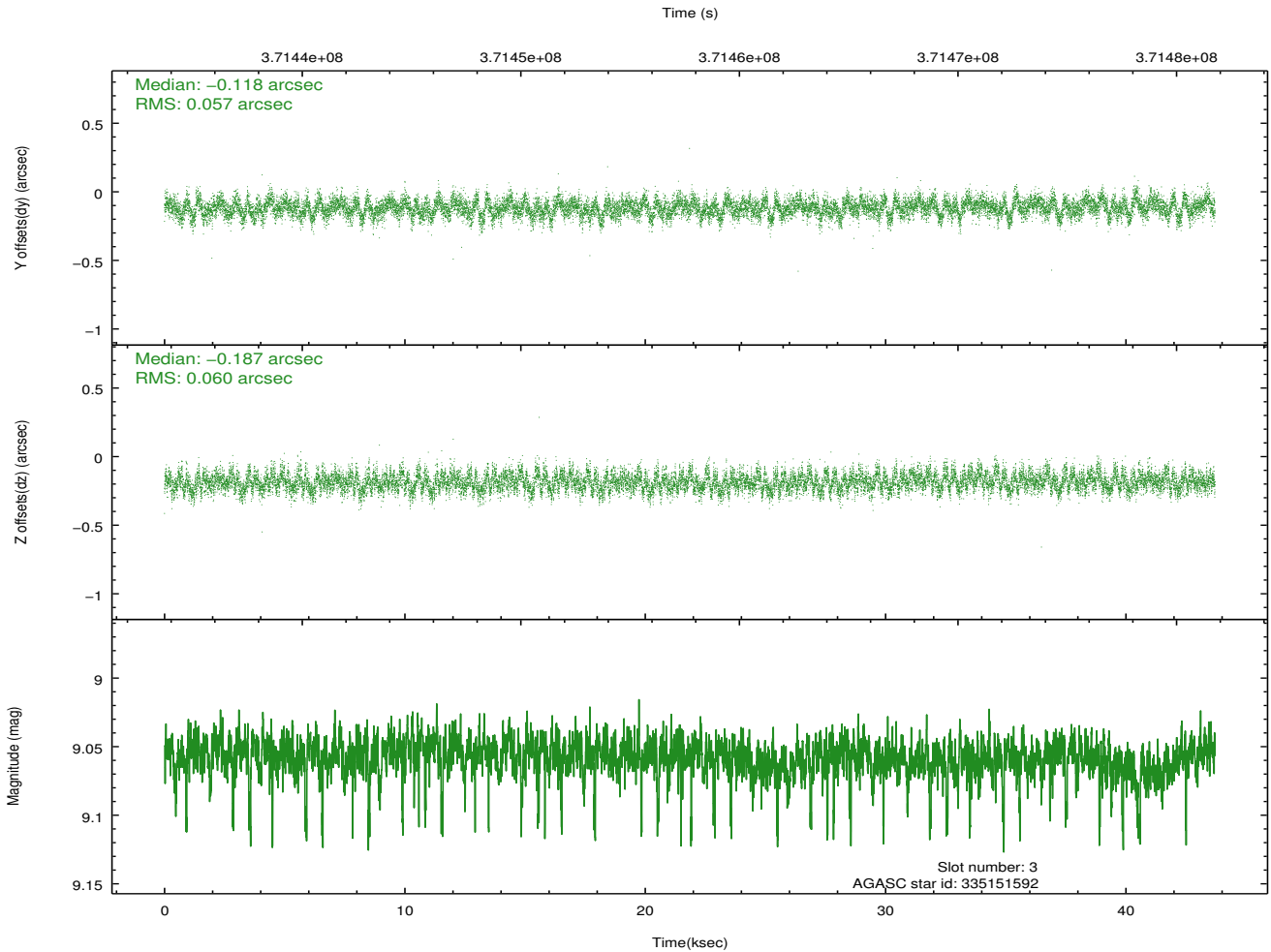
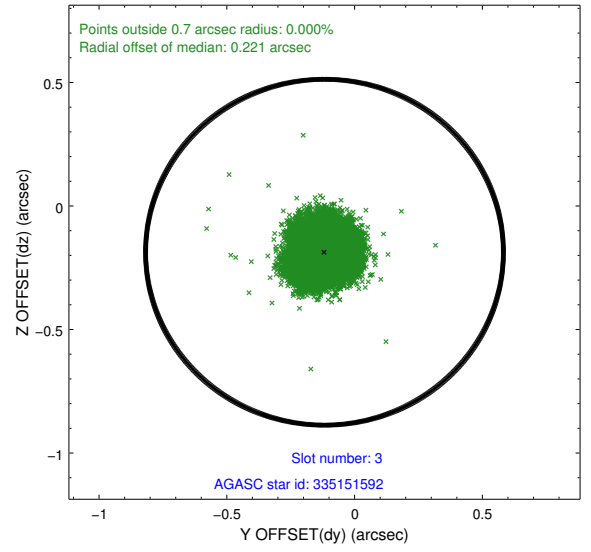
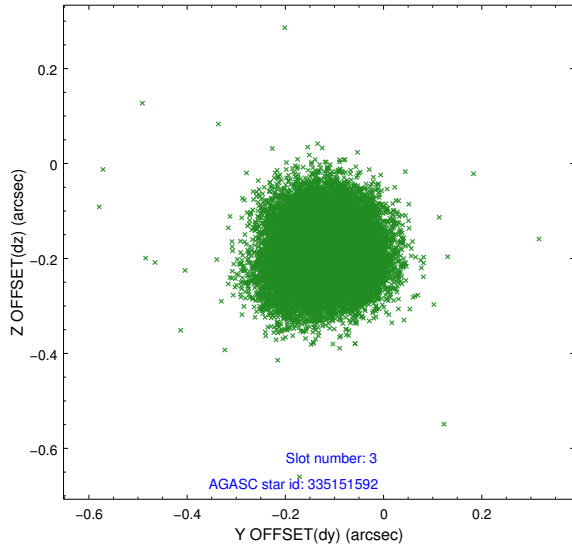


Slot Statistics

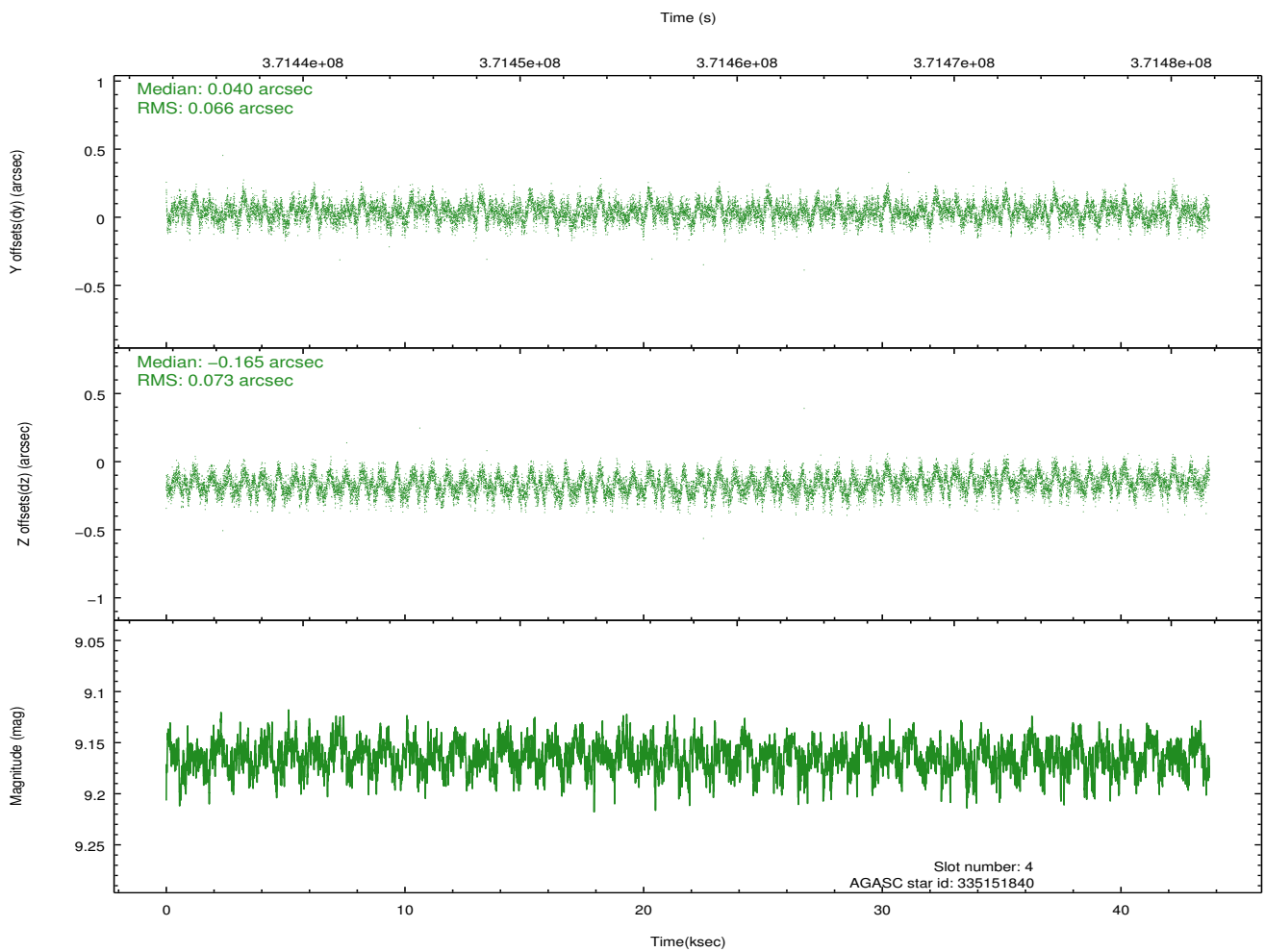
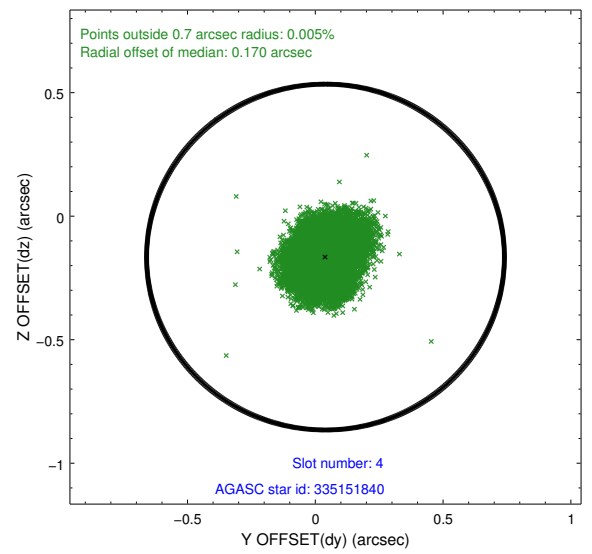
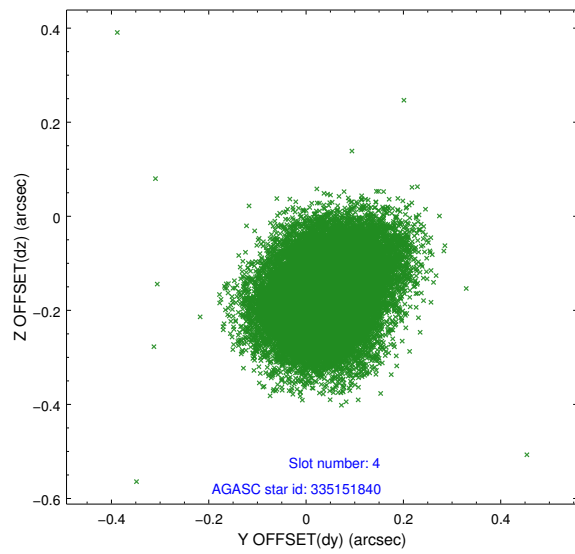
slot	status	id	mag	n_pts	med_dy	med_dz	dr1	dr2	ra	dec	mean_y	mean_z
0	FID	ACIS-S-2	6.86	10661	-0.055	-0.034	0.011	0.022	0.000000	0.000000	-768.05	-1739.29
1	FID	ACIS-S-4	6.95	10660	0.149	0.036	0.014	0.026	0.000000	0.000000	2145.48	169.18
2	FID	ACIS-S-5	6.98	10660	-0.124	0.006	0.023	0.040	0.000000	0.000000	-1820.92	162.93
3	GUIDE	335151592	9.06	21303	-0.118	-0.187	0.088	0.142	220.179561	34.279746	1476.37	1266.85
4	GUIDE	335151840	9.16	21299	0.040	-0.165	0.106	0.168	220.238613	34.430640	1302.72	1810.68
5	GUIDE	335152784	7.24	21318	-0.005	0.117	0.064	0.104	219.280617	33.678221	541.99	-2052.07
6	GUIDE	335155824	8.93	21307	-0.021	0.171	0.086	0.135	219.689900	34.035435	799.21	-295.82
7	GUIDE	335157088	9.08	21299	0.103	0.065	0.080	0.131	219.274029	33.726909	424.99	-1920.14

2.4 Star Slots

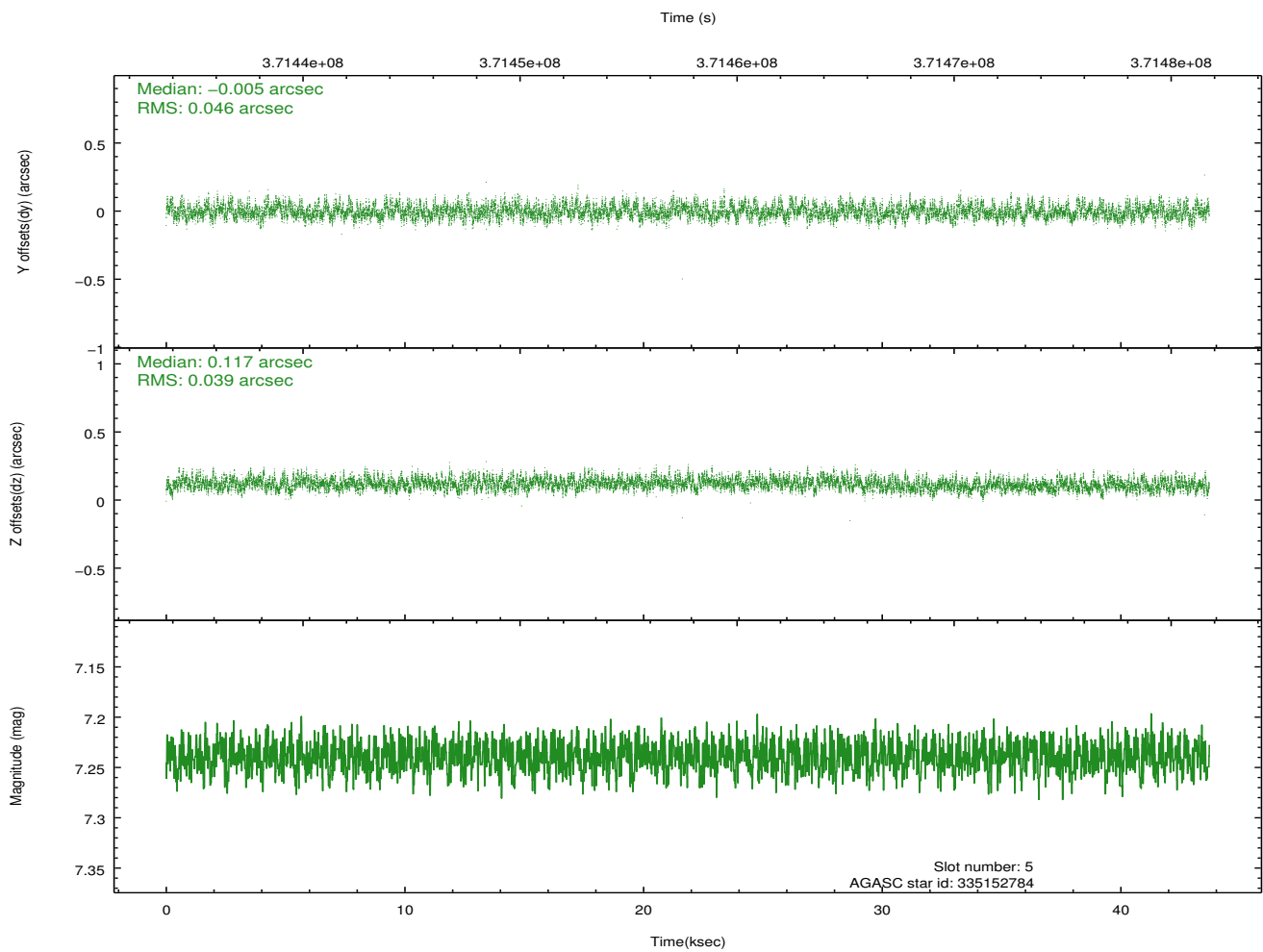
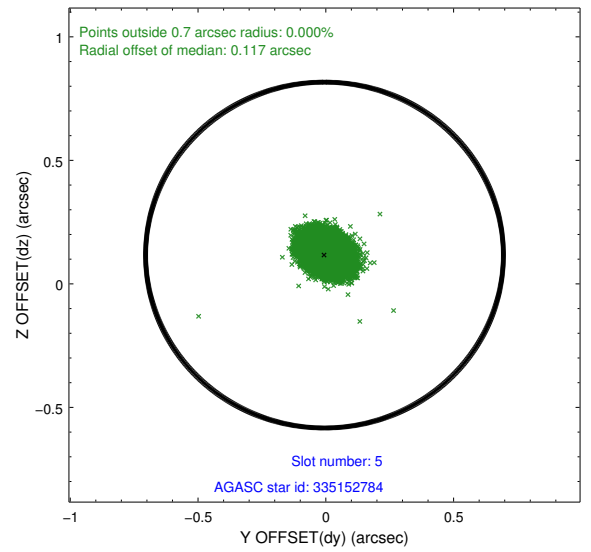
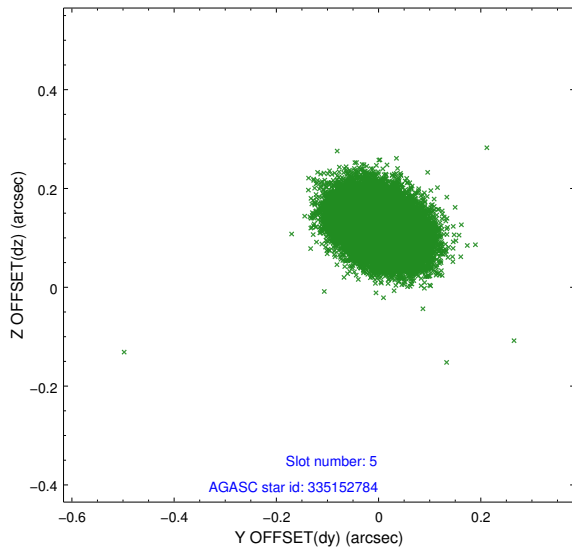
2.4.1 Slot 3



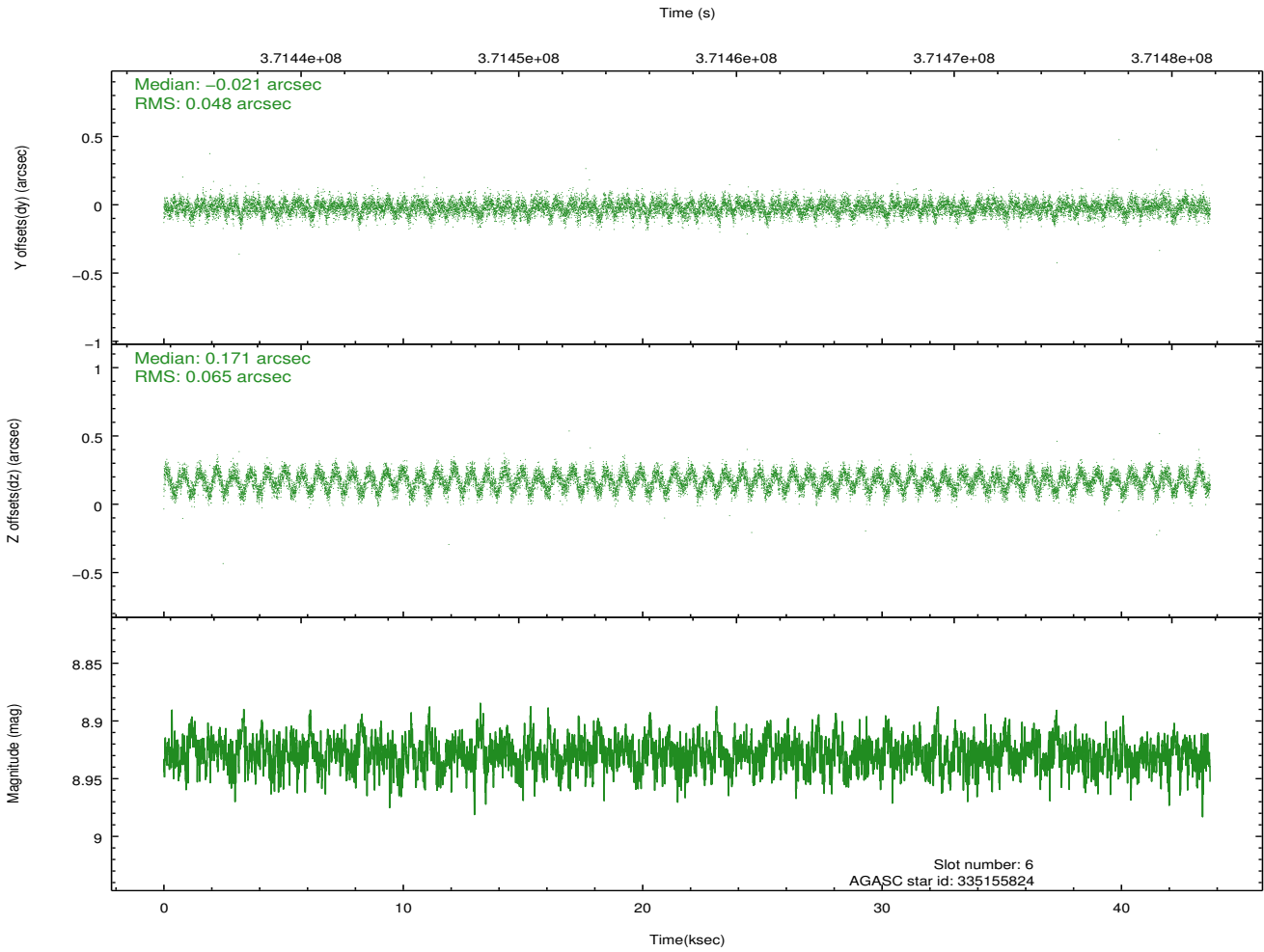
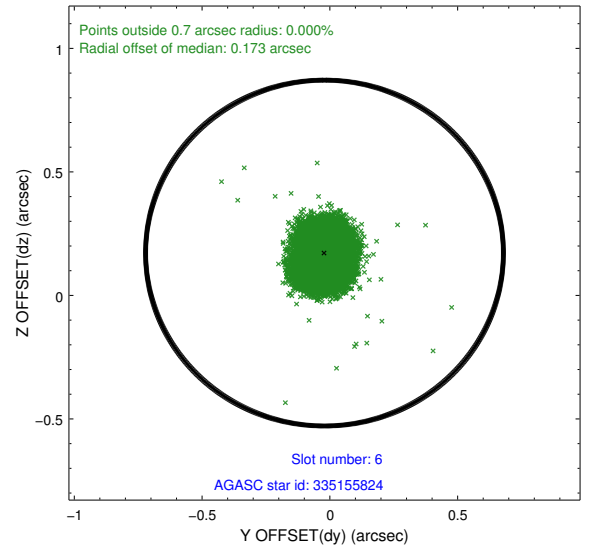
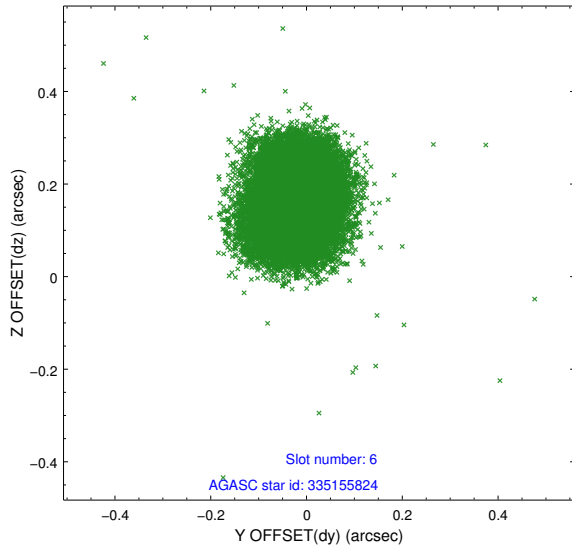
2.4.2 Slot 4



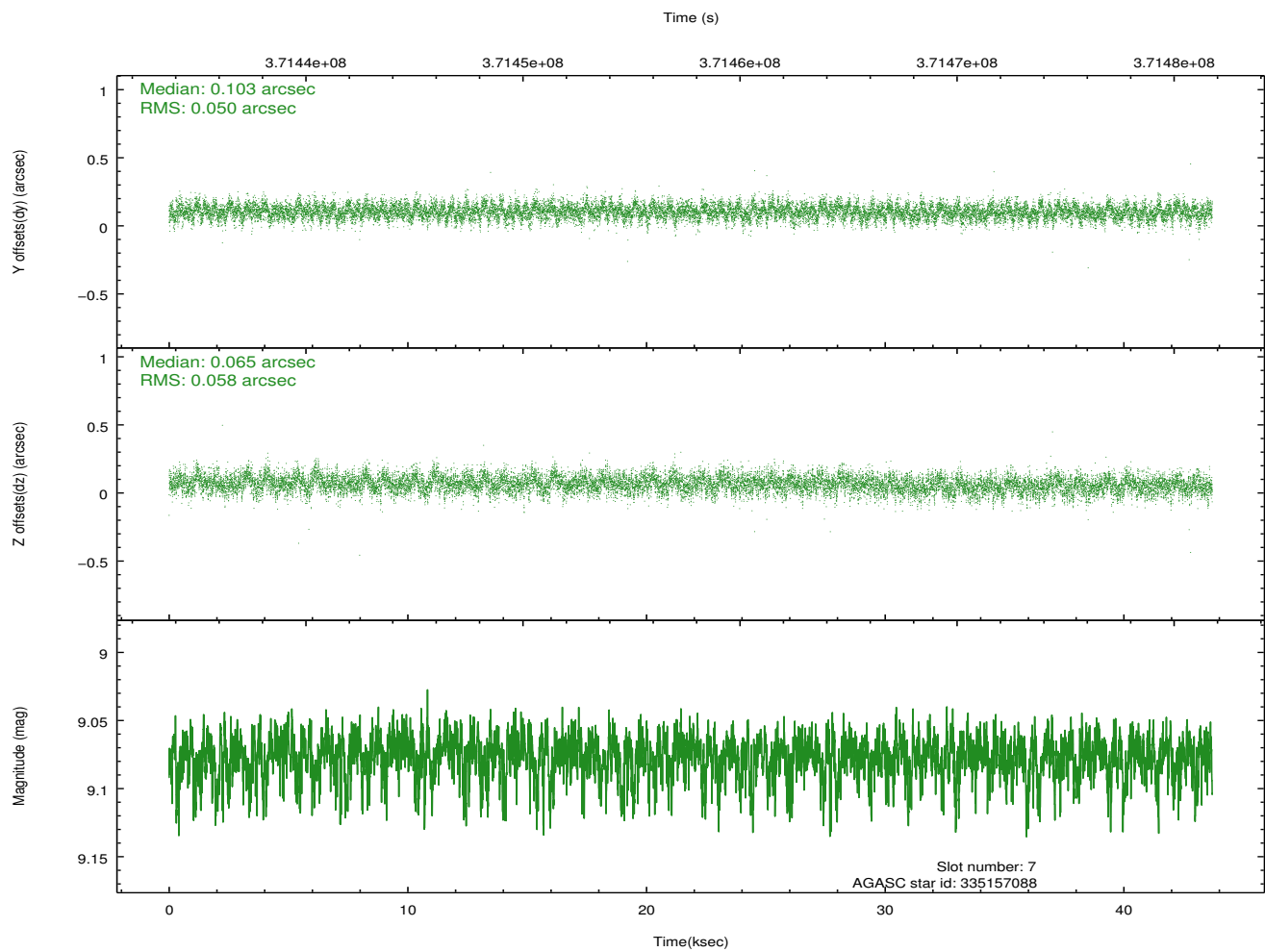
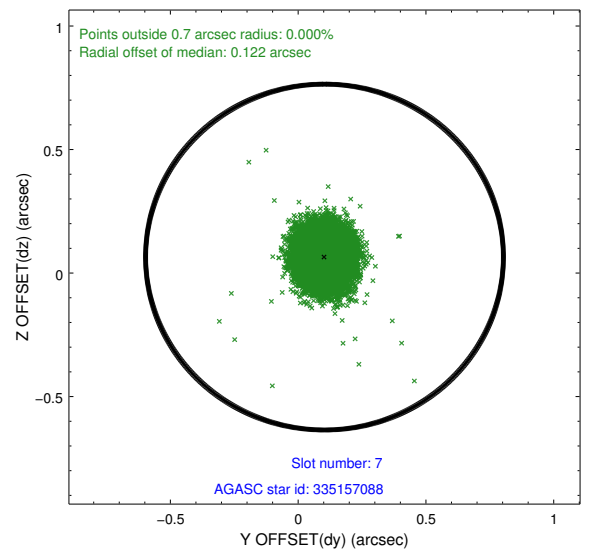
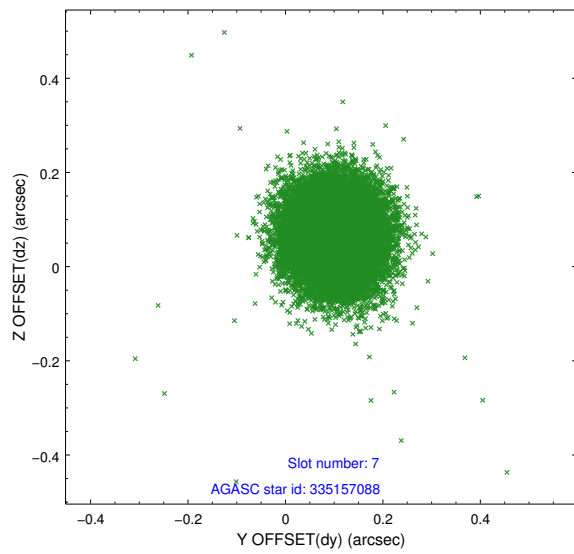
2.4.3 Slot 5



2.4.4 Slot 6

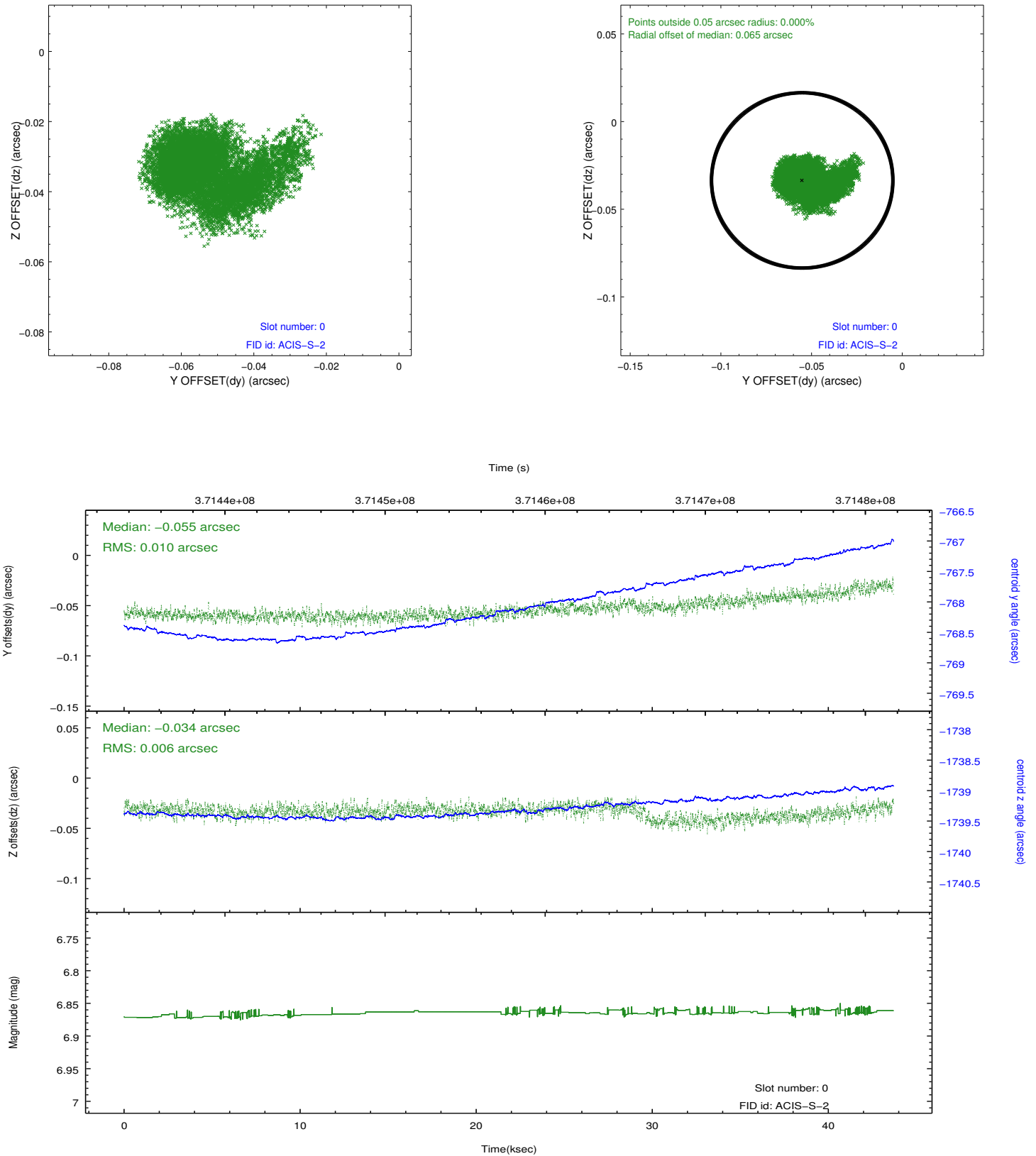


2.4.5 Slot 7

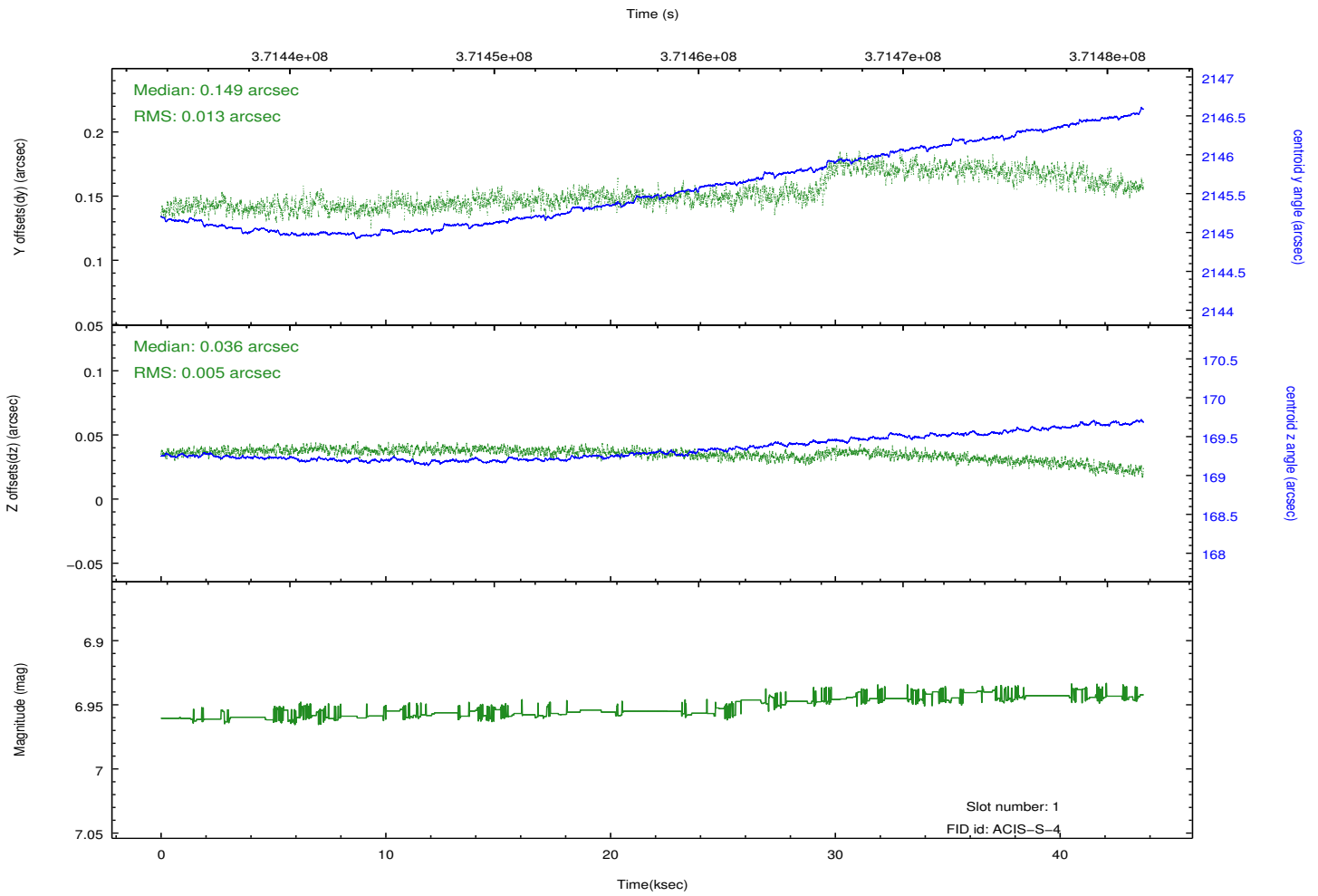
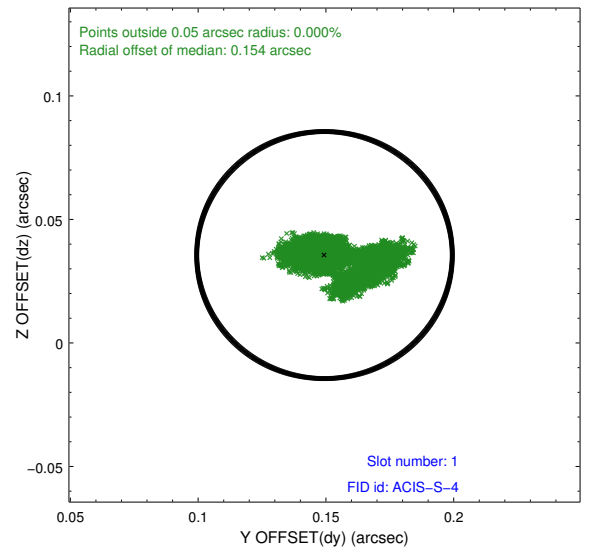
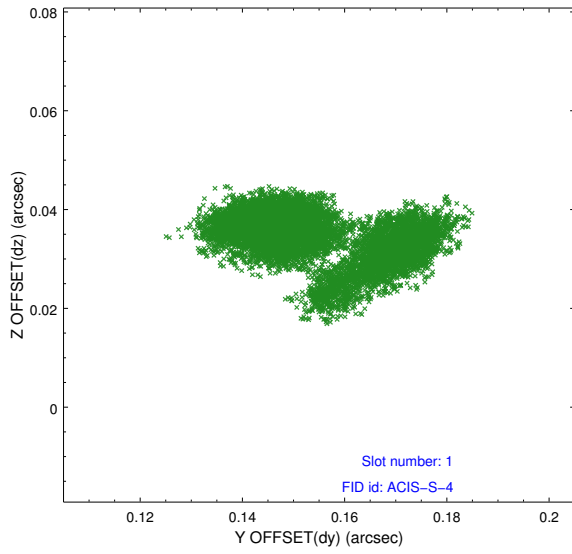


2.5 FID Slots

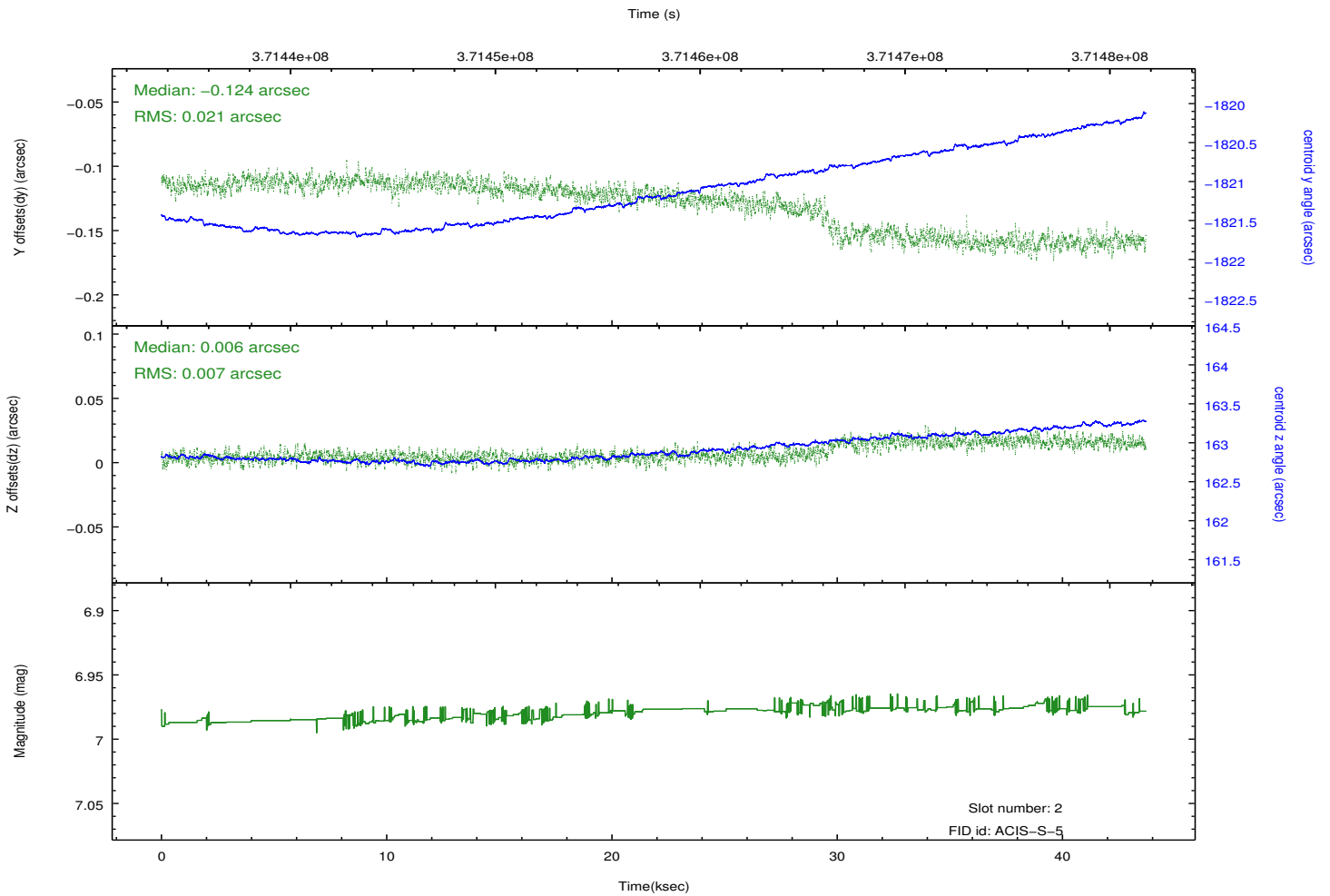
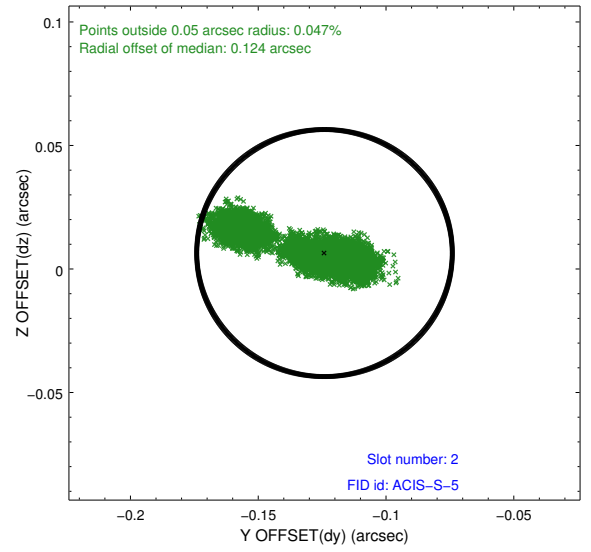
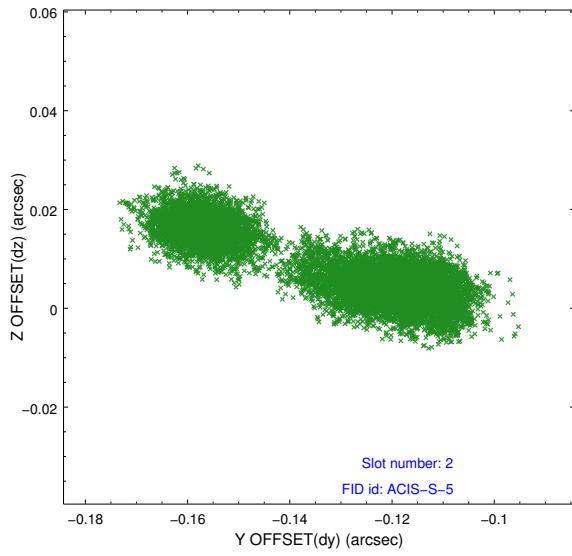
2.5.1 Slot 0



2.5.2 Slot 1



2.5.3 Slot 2



A Summary

A.1 Status

V&V Scientist	Jen Lauer
V&V Date (YYYY-MM-DD)	2012.06.19
V&V Edition	1
V&V Disposition and Status	OK
V&V Charge Time	43.700700336099

A.2 Comments