

V&V Reference Report

L2 ASCDS Version : 8.4.5

Observation 12113 - L2 Version 2
Chandra X-Ray Center

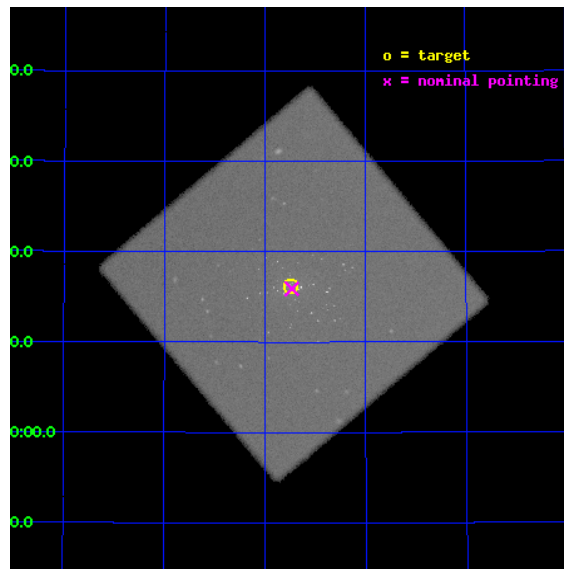
L2 Processing Date : Jul 8 2012

Contents

1	Front	2
2	OBI	3
2.1	OBI	3
2.1.1	Images	3
2.1.2	Parameters	4
2.1.3	Events	4
2.2	Compared Parameters	5
2.3	Aspect	6
2.4	Star Slots	9
2.4.1	Slot 3	9
2.4.2	Slot 4	10
2.4.3	Slot 5	11
2.4.4	Slot 6	12
2.4.5	Slot 7	13
2.5	FID Slots	14
2.5.1	Slot 0	14
2.5.2	Slot 1	15
2.5.3	Slot 2	16
A	Summary	17
A.1	Status	17
A.2	Comments	17

1 Front

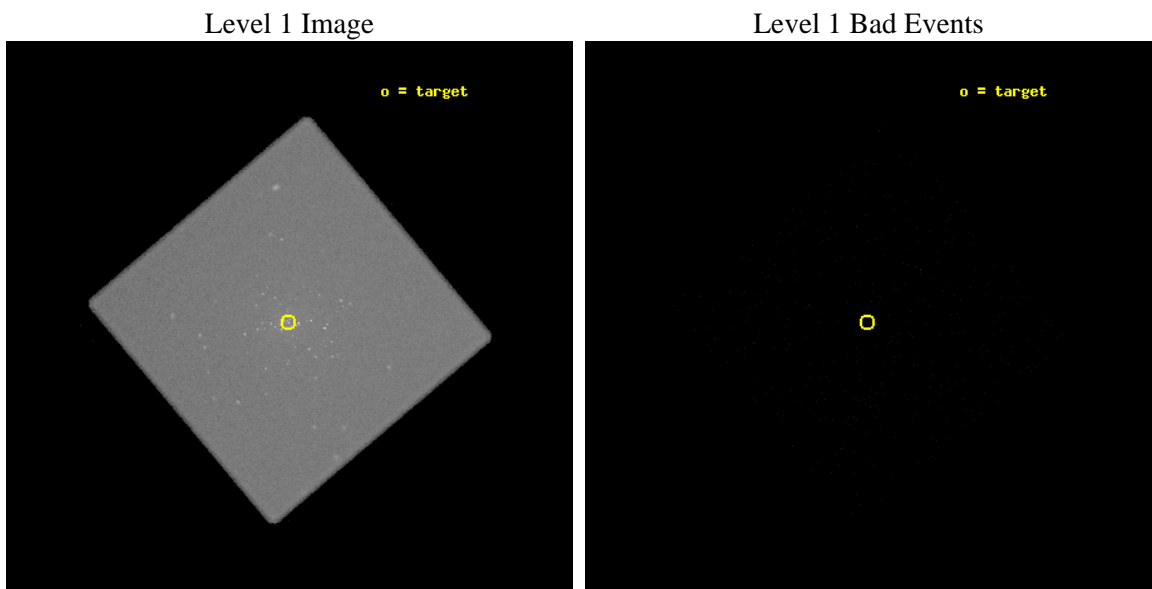
seq_num	300281	Sequence number
obs_id	12113	Observation id
title	Resolving short supersoft source states of optical novae in the core of M31	Proposal title
observer	Dr. Wolfgang Pietsch	Principal investigator
object	M31	Source name
ra_targ	10.684583	Observer's specified target RA [deg]
dec_targ	41.269278	Observer's specified target Dec [deg]
ra_nom	10.682986455322	Nominal RA [deg]
dec_nom	41.265161644557	Nominal Dec [deg]
roll_nom	274.86811135358	Nominal Roll [deg]
revision	2	Processing version of data
ontime	19183.900989592	[s]
livetime	18974.849167077	Ontime multiplied by DTCOR
l2events	1435716	Number of level 2 events



2 OBI

2.1 OBI

2.1.1 Images



2.1.2 Parameters

obi_num	0	Obi number	sched_exp_time	19000.000000	[s] Scheduled observation exposure time
ascdsver	8.4.5	Processing system revision	ontime	19183.900989592	[s]
caldbver	4.5.0	 	l1events	2024168	Number of level 1 events
date	2012-07-08T04:46:21	Date and time of file creation			
revision	2	Processing version of data			

2.1.3 Events

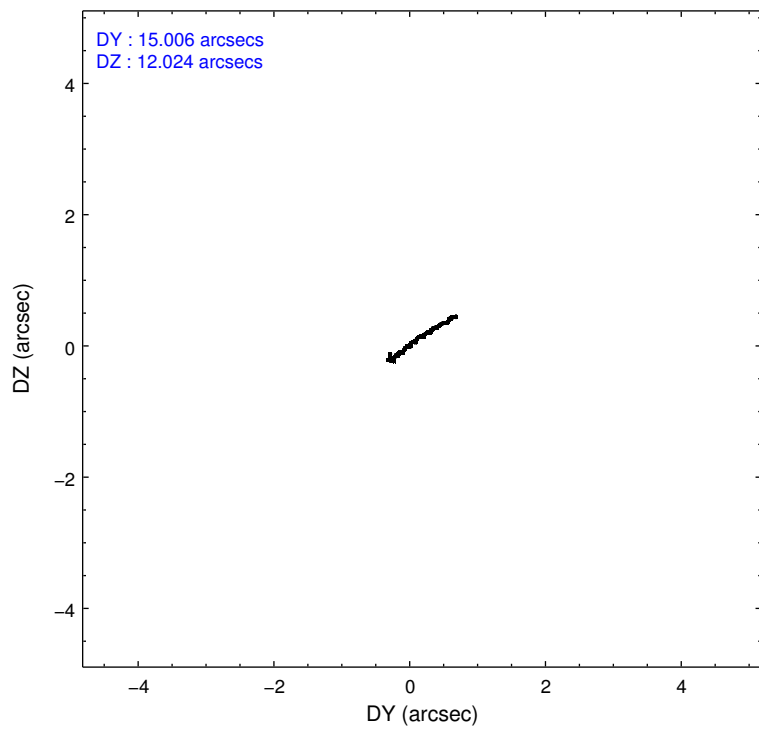
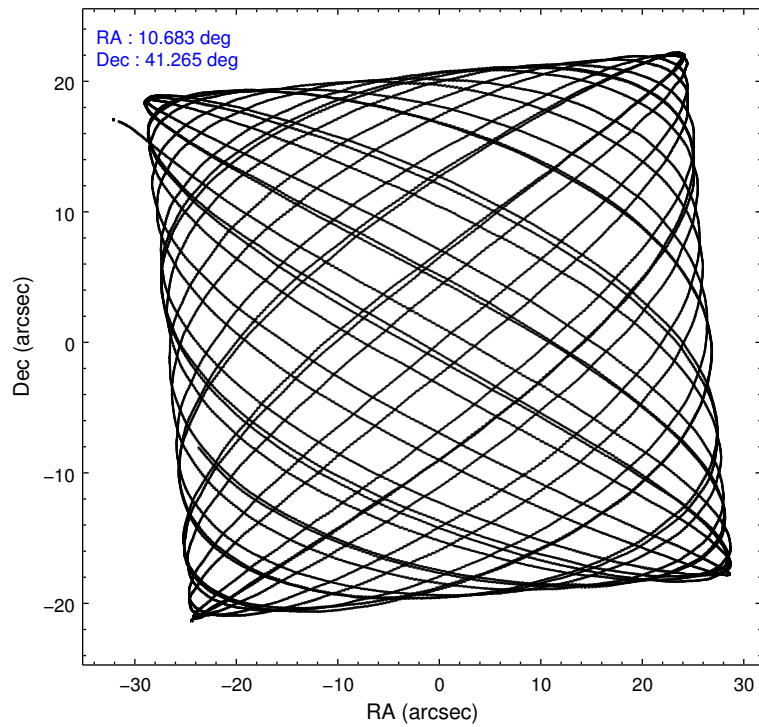
Level 1 Events

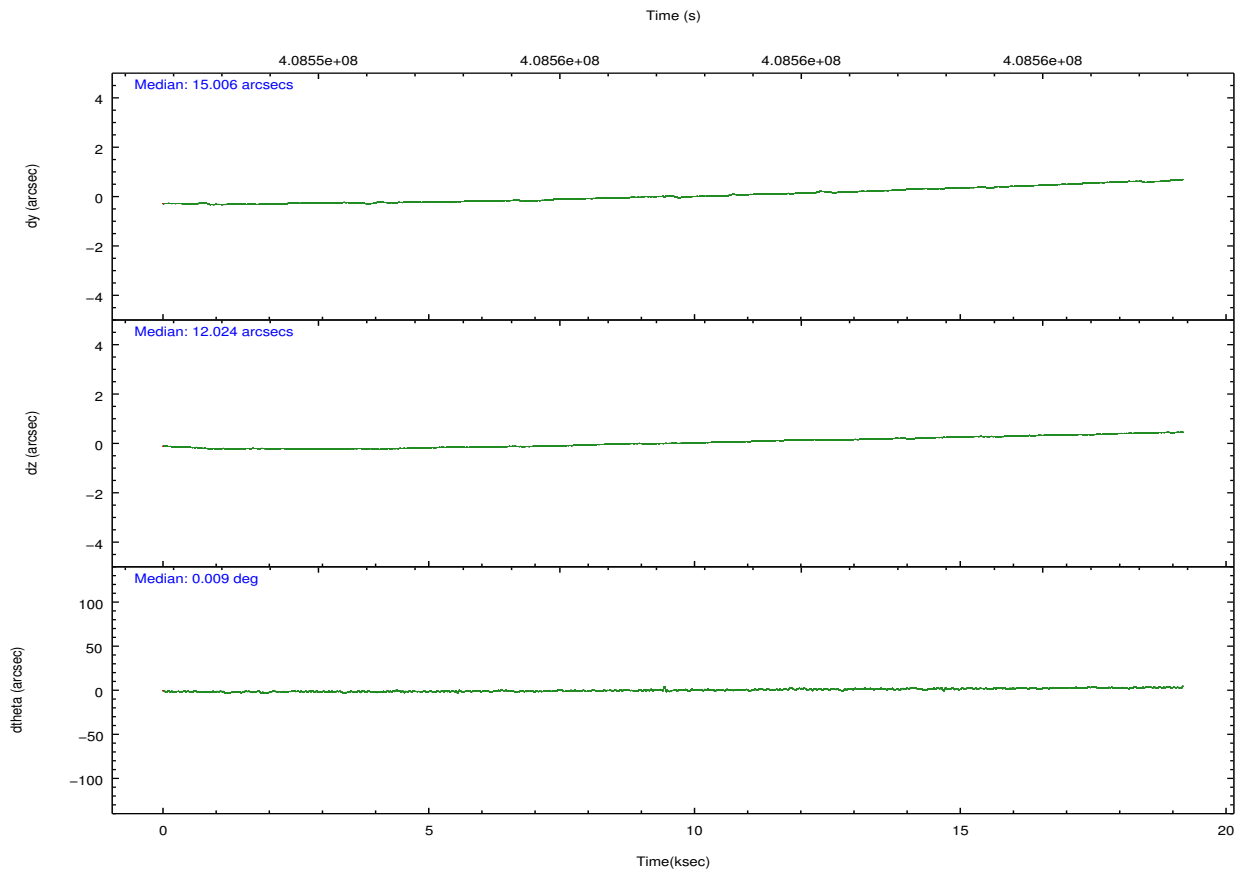
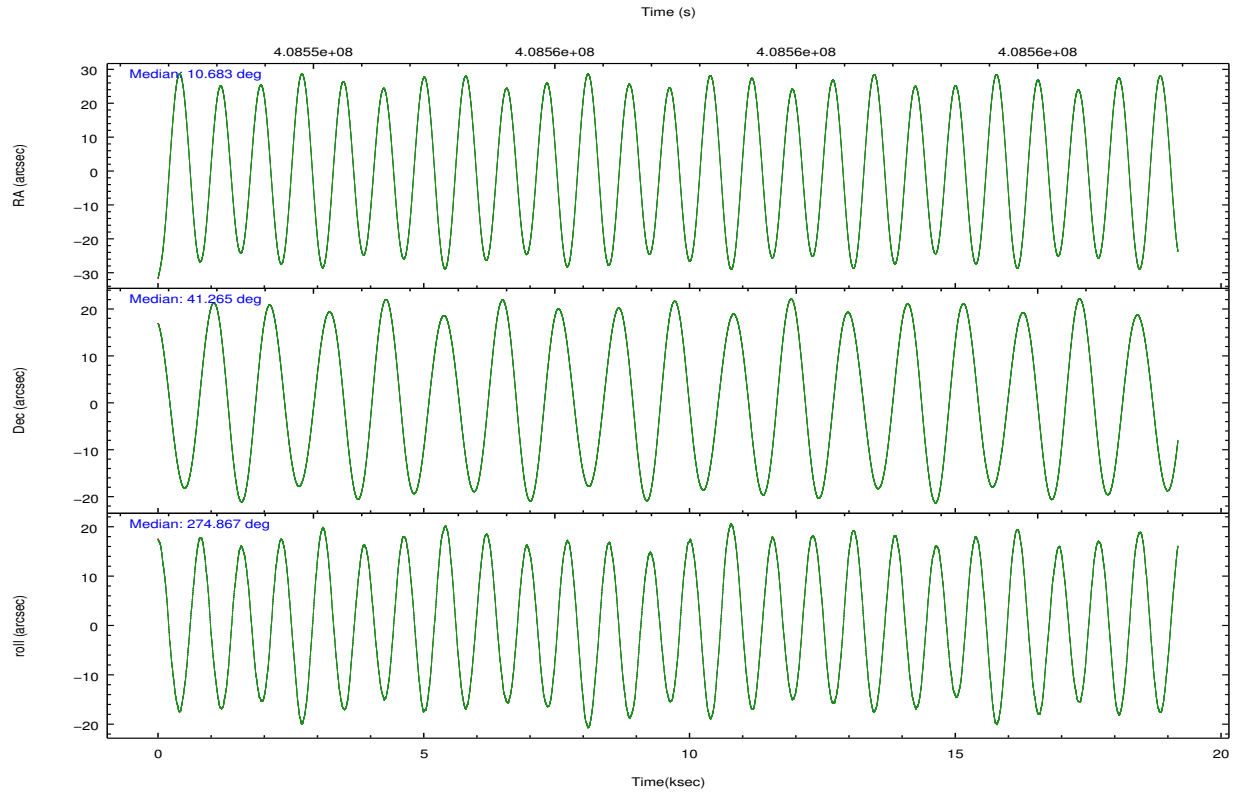
	segment 0
level 1 events	2024168
rejected events	11433
rejected %	0%

2.2 Compared Parameters

Parameter	Planned	Actual	Parameter	Planned	Actual
Instrument	HRC	HRC	Obspar format version number	7	7
Detector	HRC-I	HRC-I	Obspar file type	PREDICTED	ACTUAL
Grating	NONE	NONE	Obspar update status	NONE	UPDATED
Data mode	OBSERVING	OBSERVING			
Observation mode	POINTING	POINTING			
[deg] Pointing RA	10.661587	10.68298645532152			
[deg] Pointing Dec	41.287173	41.26516164455673			
[deg] Pointing Roll	274.977713	274.8681113535763			
[mm] SIM focus pos	-1.040293	-1.038866356238299			
[mm] SIM defocus	0	0.001426264420575141			
[mm] SIM translation stage pos	126.985494	126.9829799899862			
[mm] SIM translation stage offset	0	0.002508901615314585			
[s] Observation start time (MET)	408547932.184000	408547491.94839			
Observation start date	2010-12-12T13:31:06	2010-12-12T13:24:51			
[s] Observation end time (MET)	408566932.184000	408568115.97445			
Observation end date	2010-12-12T18:47:46	2010-12-12T19:08:35			

2.3 Aspect



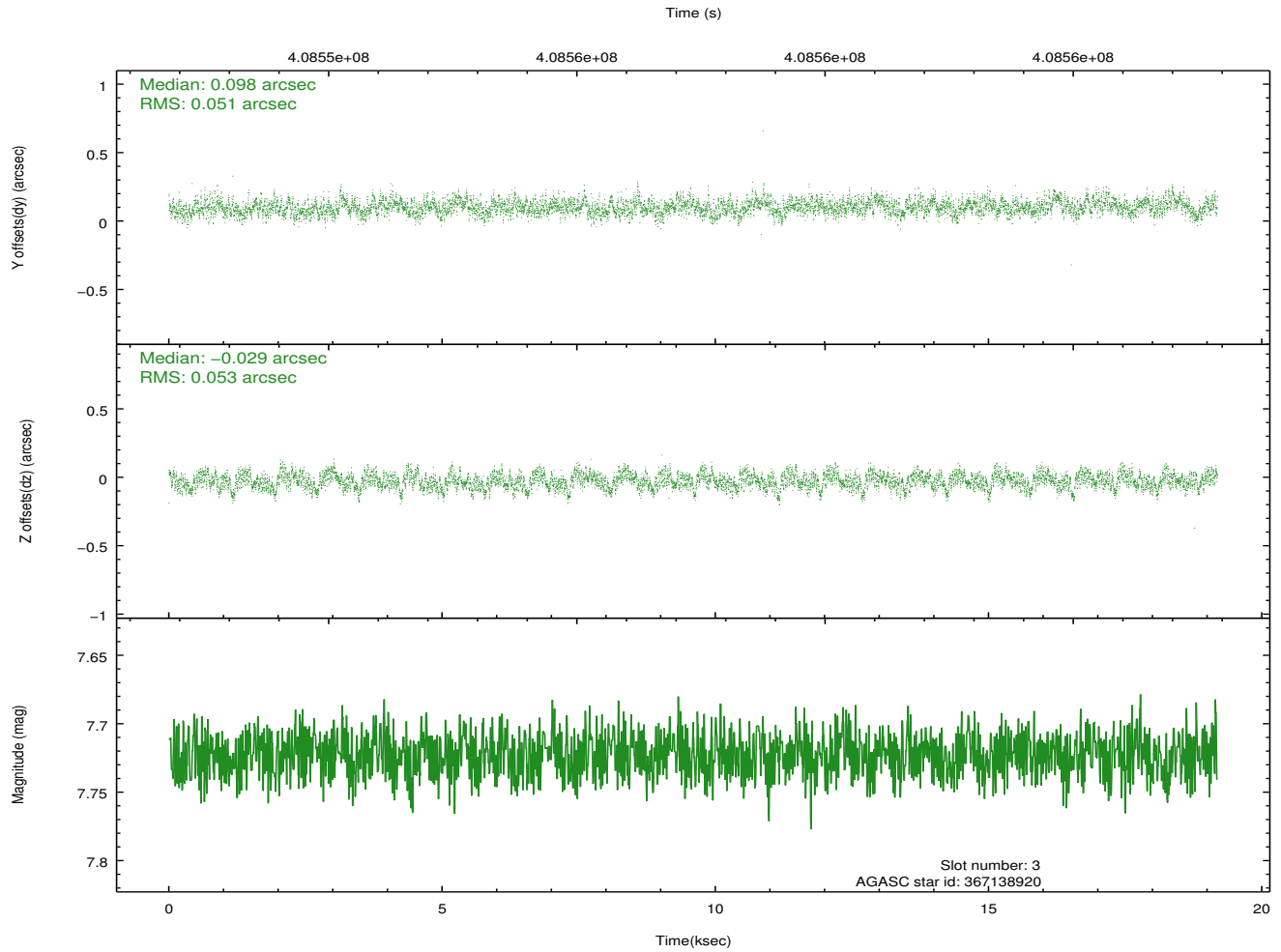
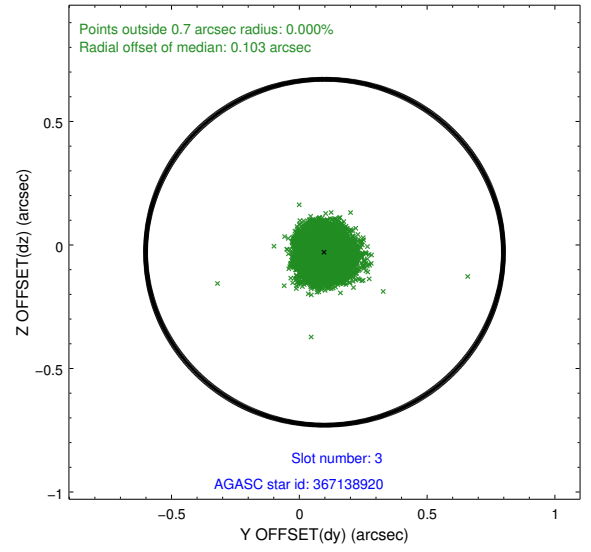
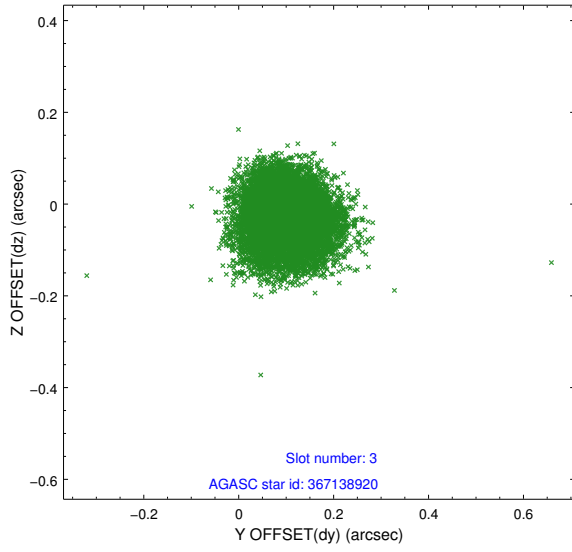


Slot Statistics

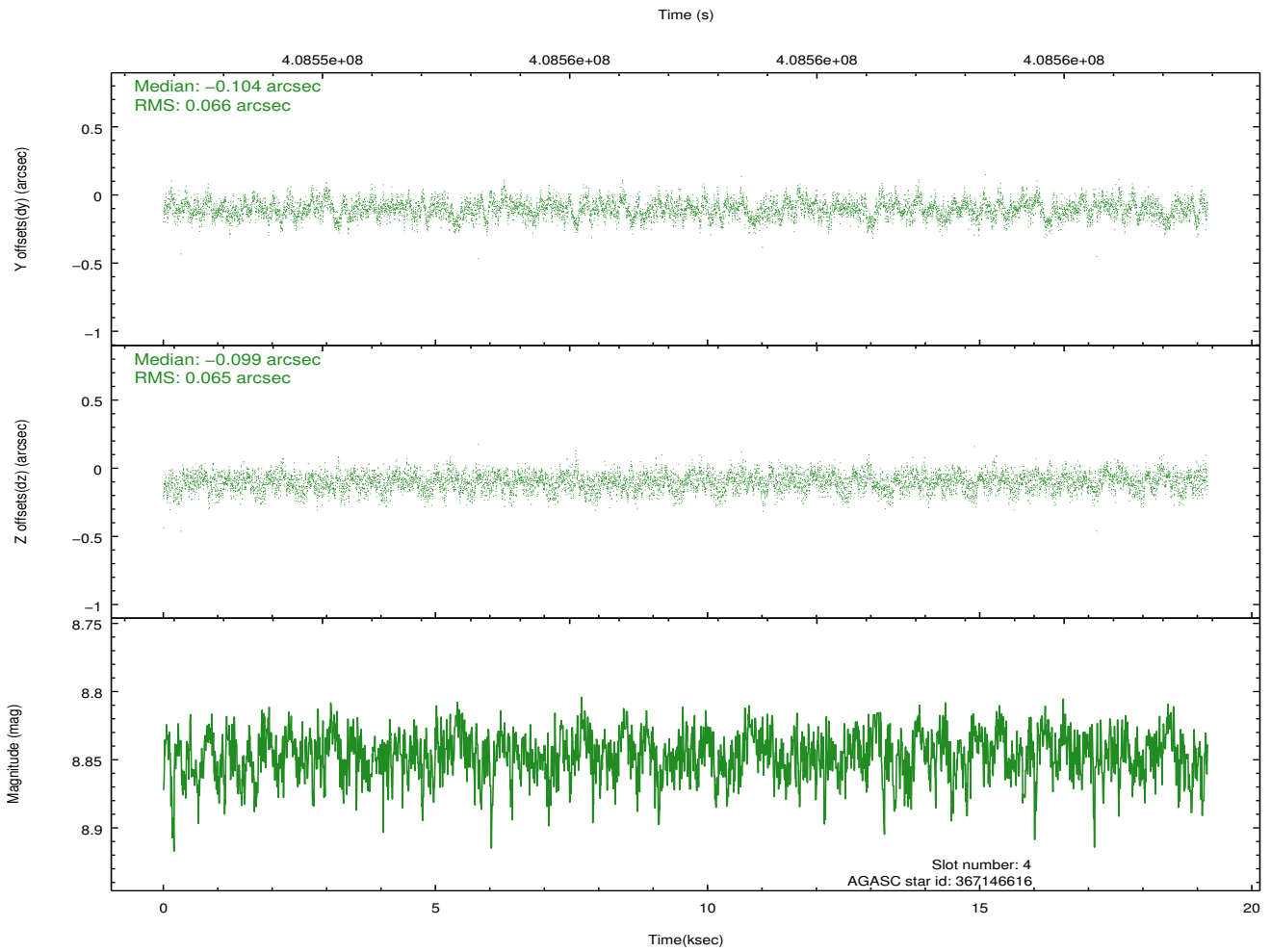
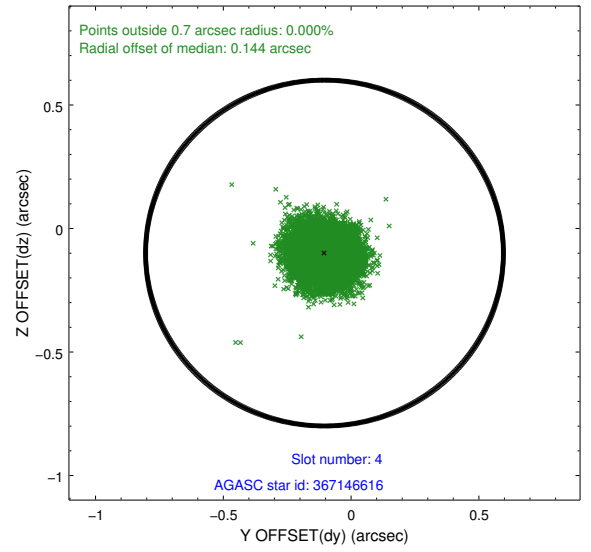
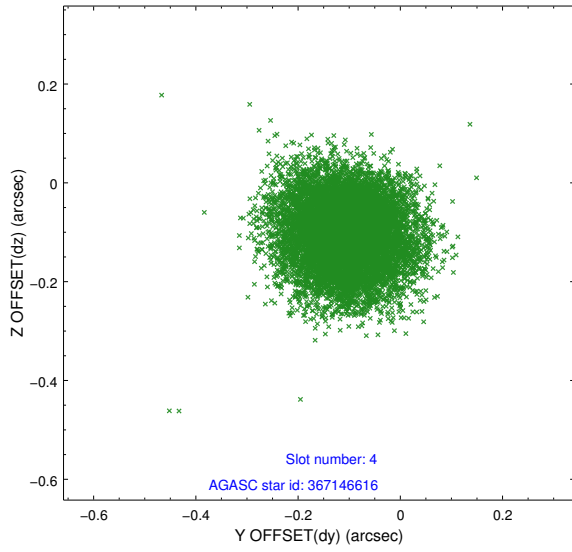
slot	status	id	mag	n_pts	med_dy	med_dz	dr1	dr2	ra	dec	mean_y	mean_z
0	FID	HRC-I-1	6.96	4679	-0.070	0.017	0.009	0.014	0.000000	0.000000	-770.94	-1300.04
1	FID	HRC-I-2	6.99	4680	0.231	-0.134	0.008	0.013	0.000000	0.000000	841.82	-1302.05
2	FID	HRC-I-3	7.05	4680	-0.043	0.027	0.008	0.015	0.000000	0.000000	-1199.21	1004.26
3	GUIDE	367138920	7.72	9359	0.098	-0.029	0.079	0.124	11.513485	40.808909	1906.15	2165.11
4	GUIDE	367146616	8.85	9339	-0.104	-0.099	0.099	0.159	11.418645	41.190163	516.98	2013.82
5	GUIDE	367148872	7.24	9360	0.044	0.072	0.074	0.122	10.505940	40.688258	2111.44	-610.19
6	GUIDE	367663272	9.29	9353	-0.058	-0.008	0.107	0.174	10.656279	41.699429	-1479.32	113.59
7	GUIDE	367674552	8.85	9351	0.016	0.069	0.091	0.149	11.016238	41.570845	-936.55	1040.59

2.4 Star Slots

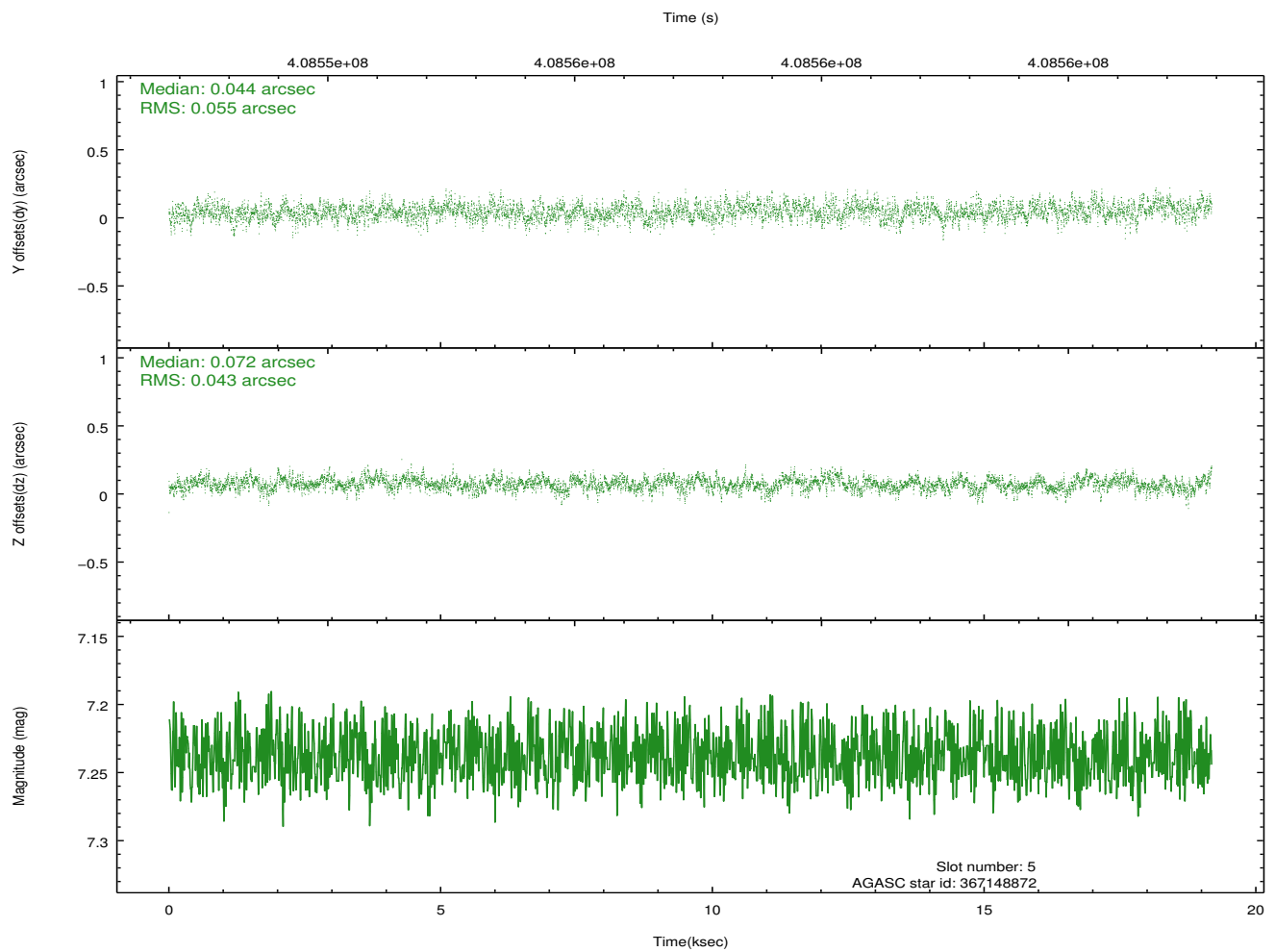
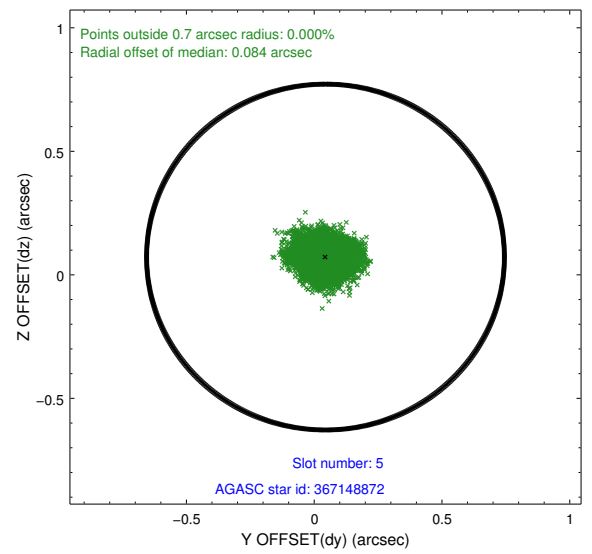
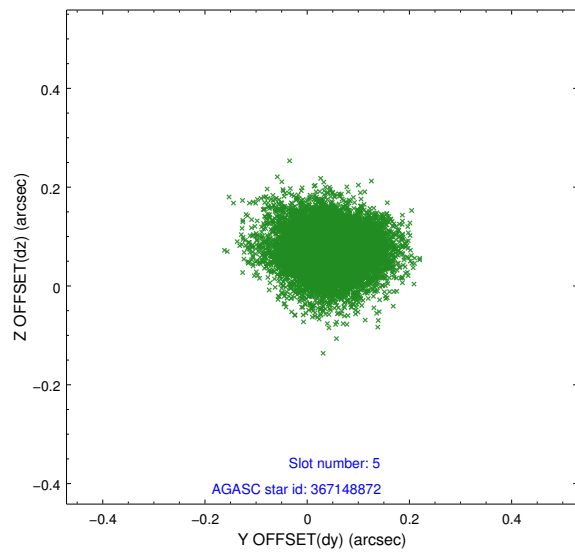
2.4.1 Slot 3



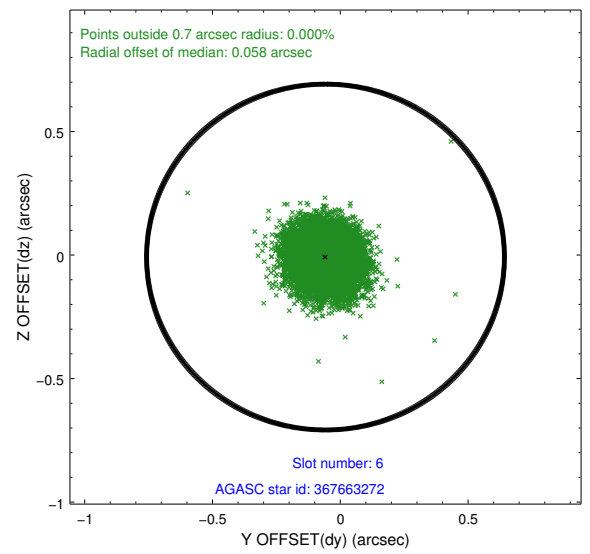
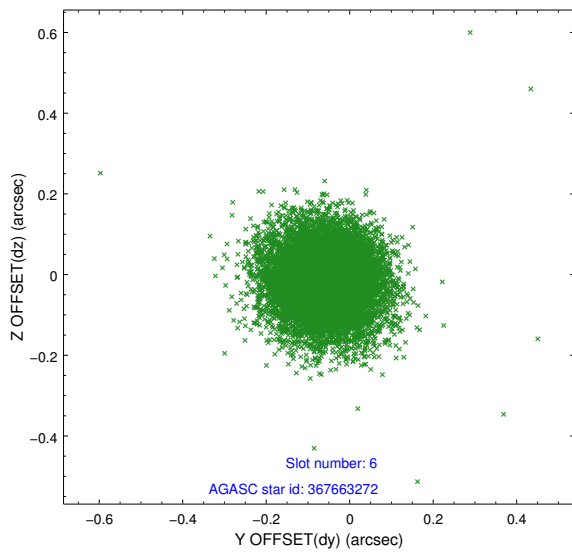
2.4.2 Slot 4



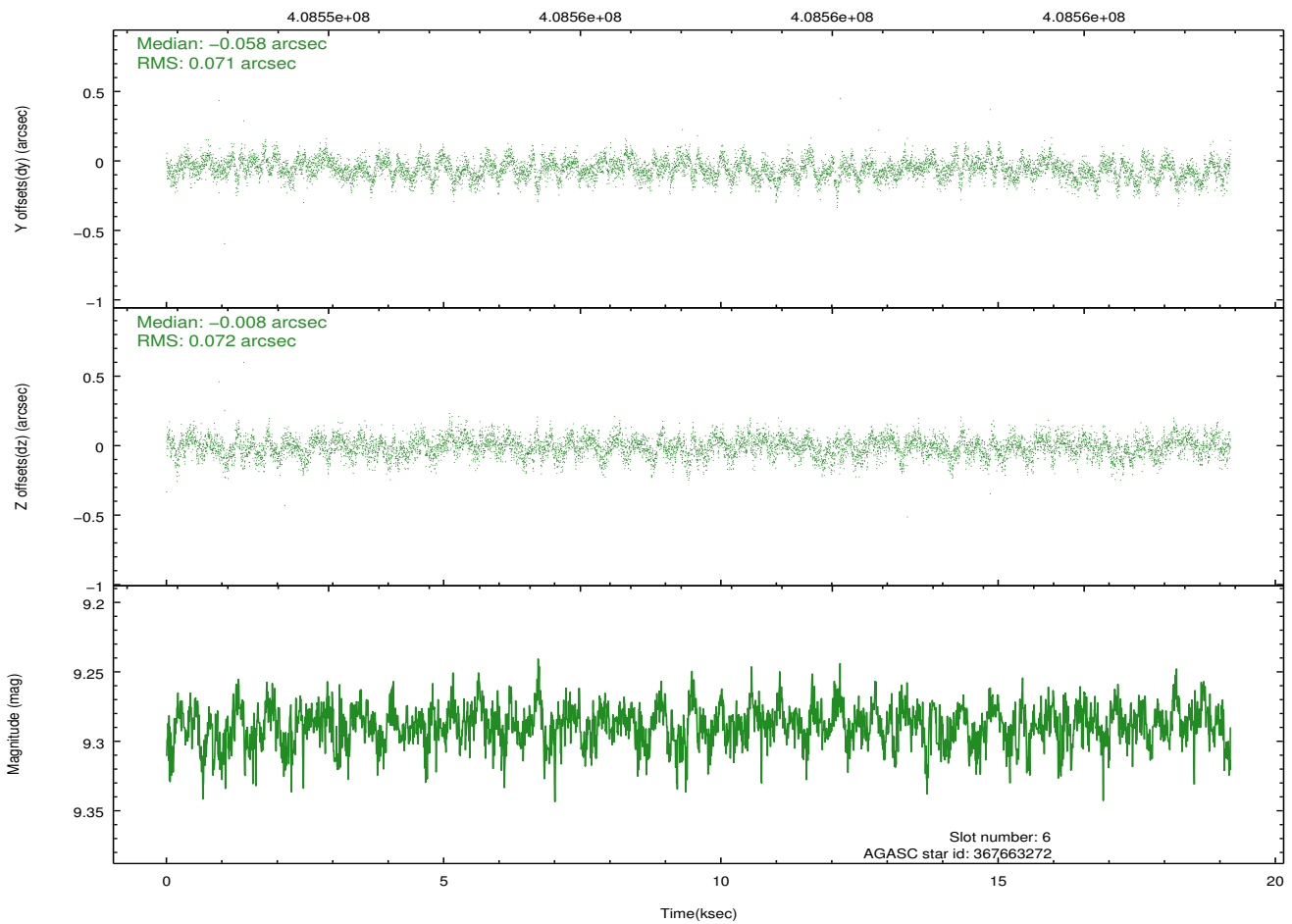
2.4.3 Slot 5



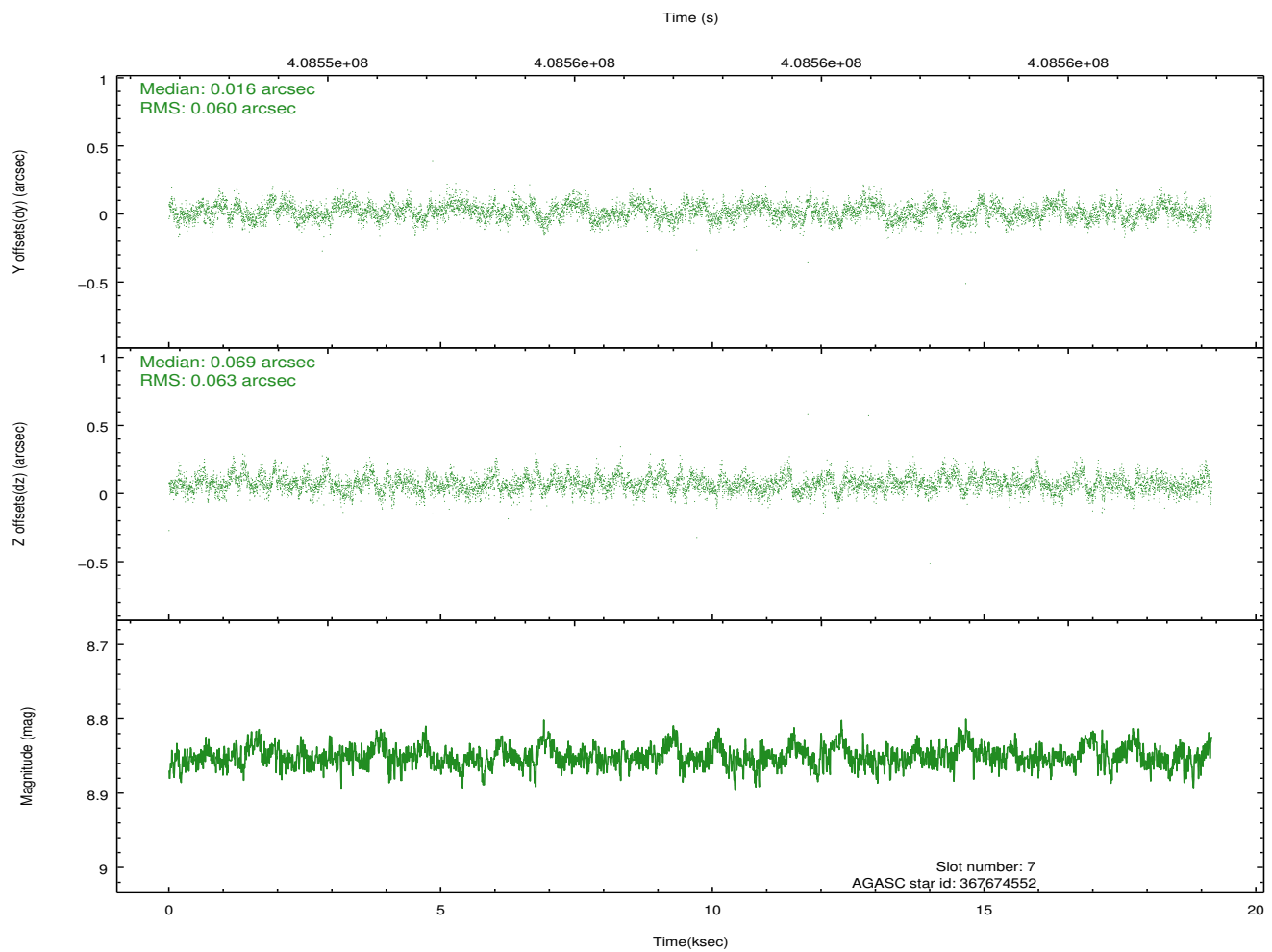
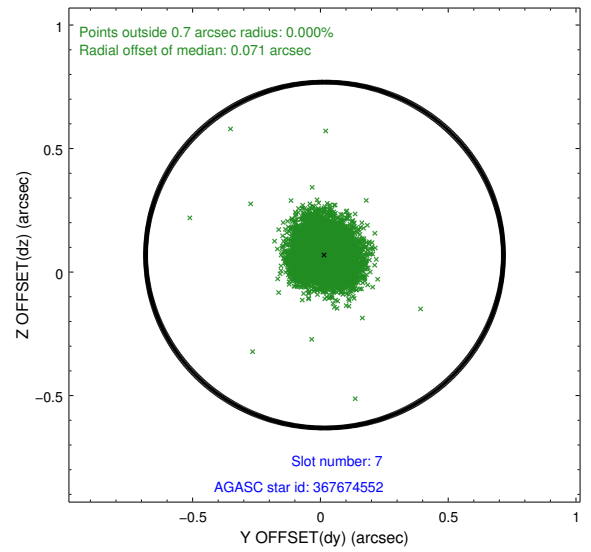
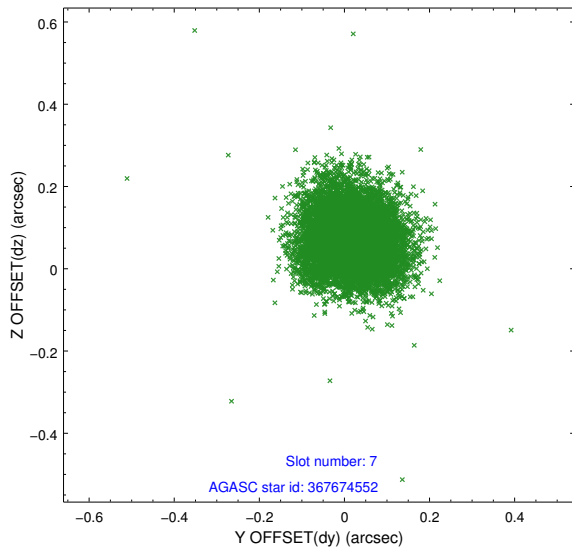
2.4.4 Slot 6



Time (s)

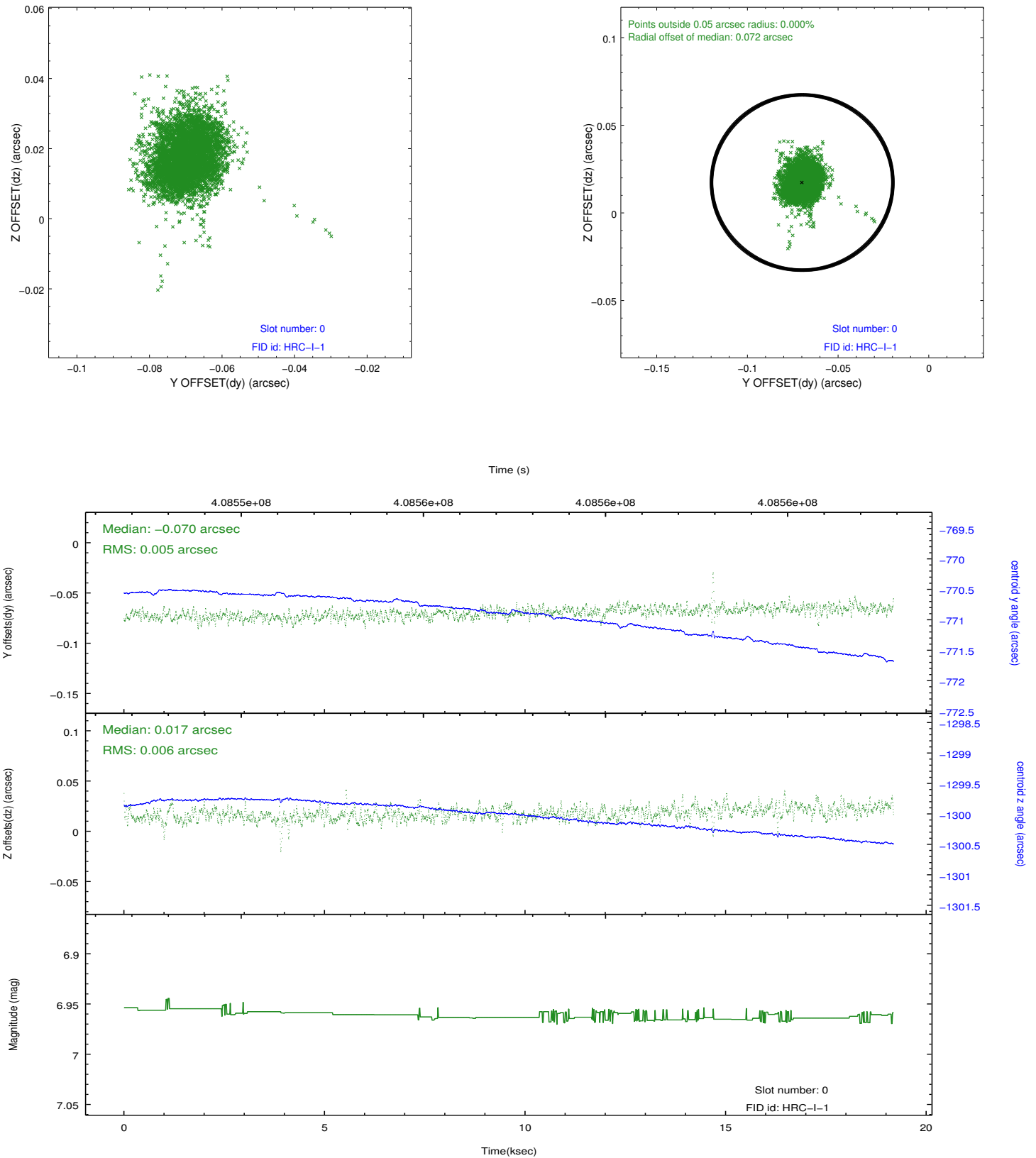


2.4.5 Slot 7

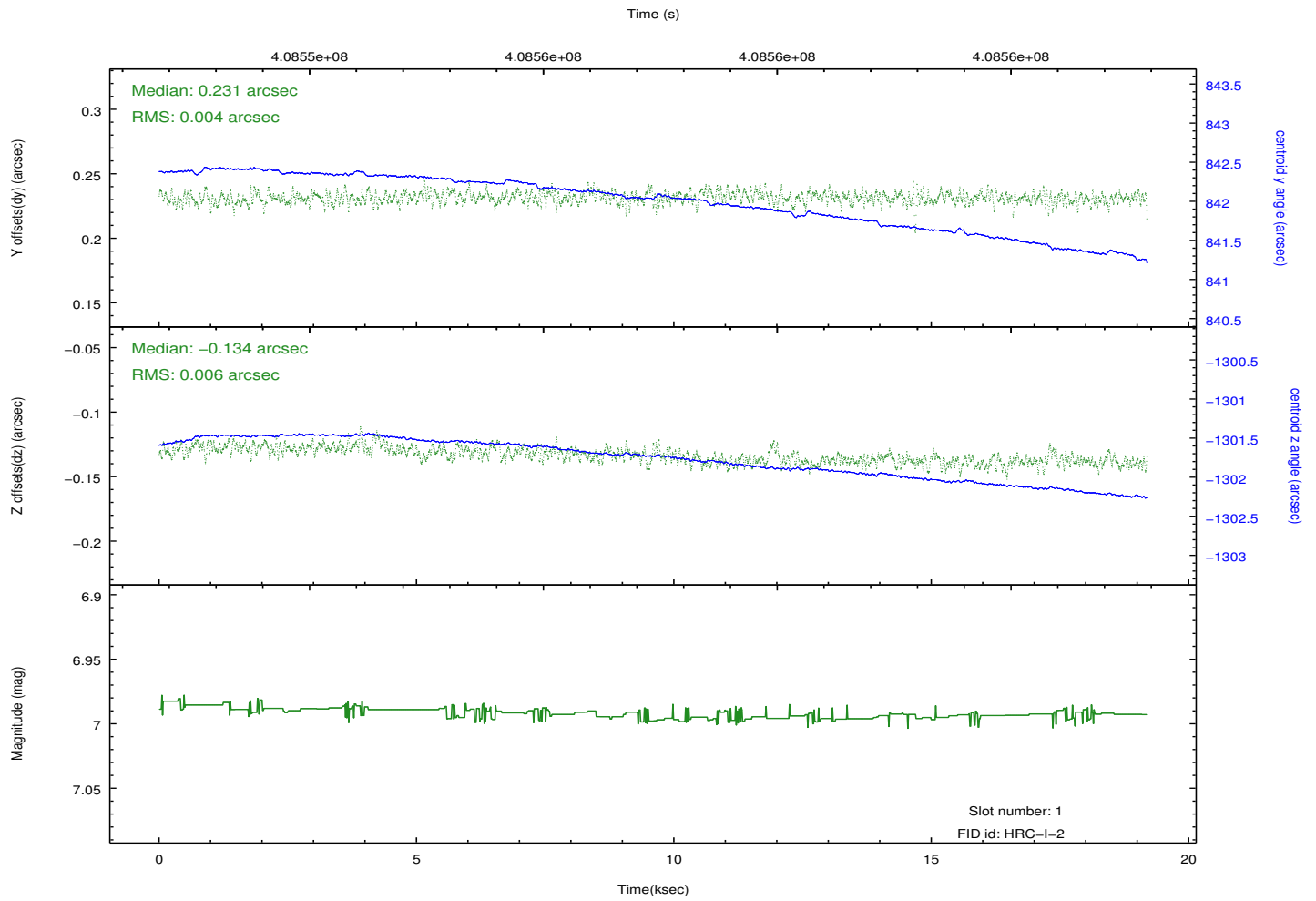
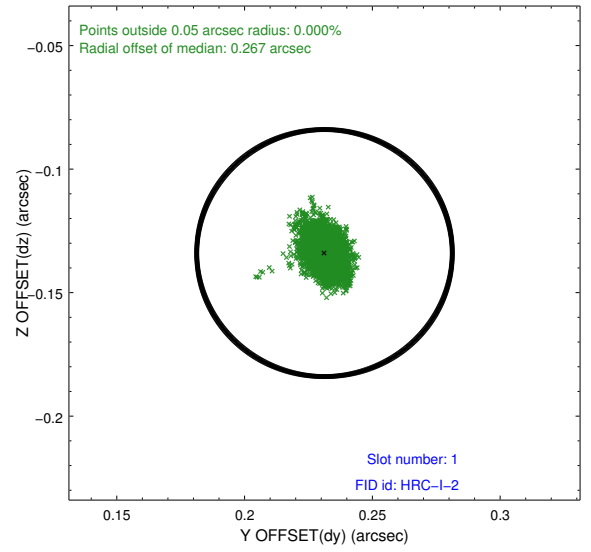
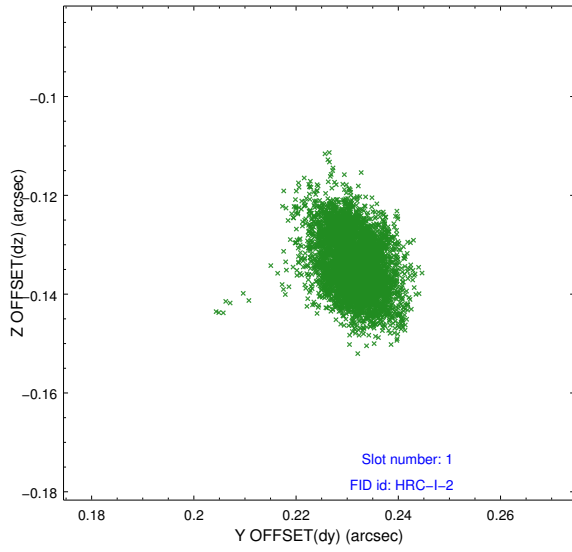


2.5 FID Slots

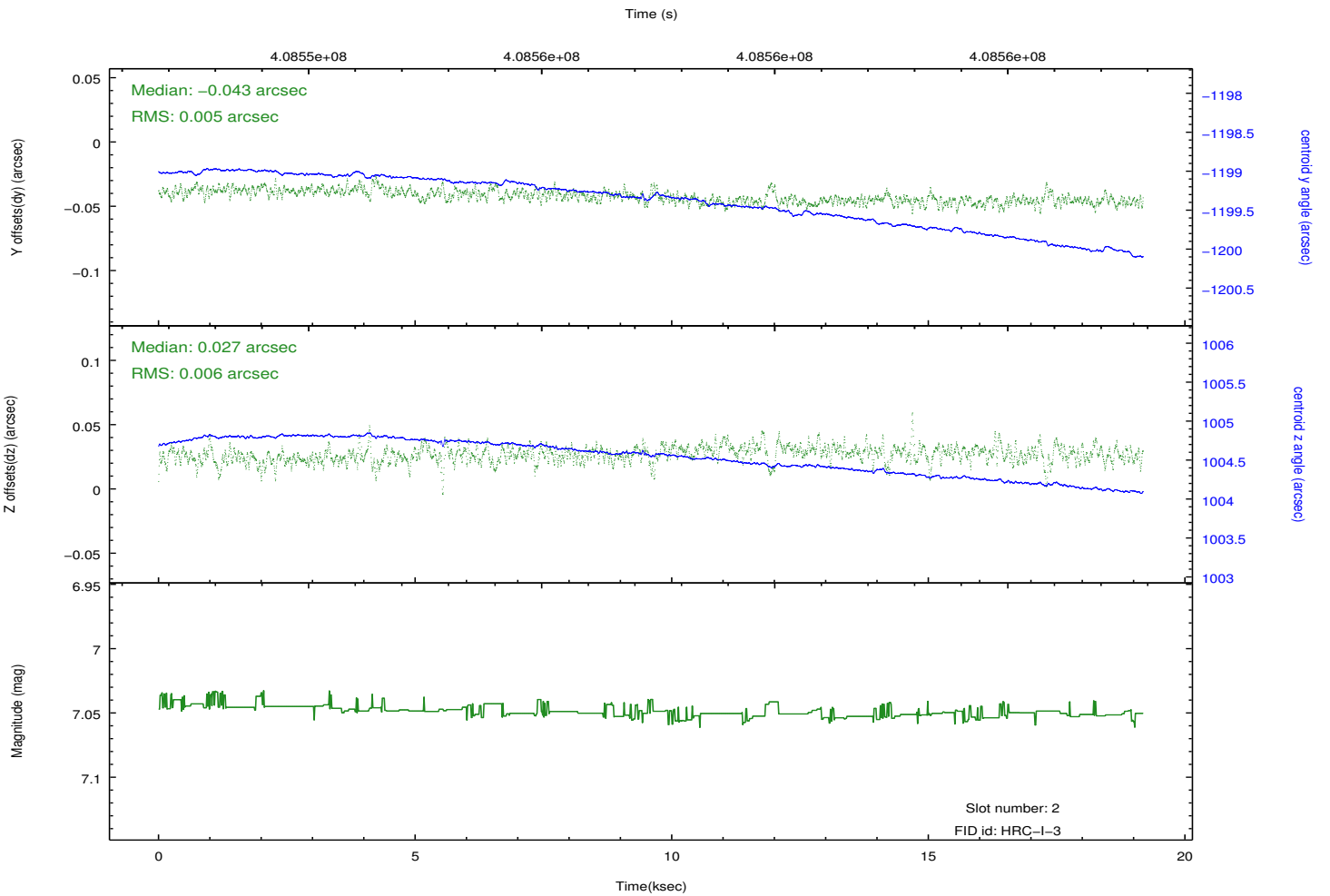
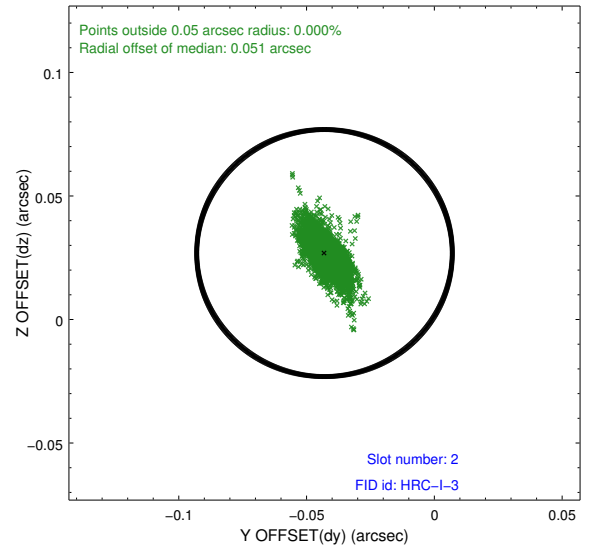
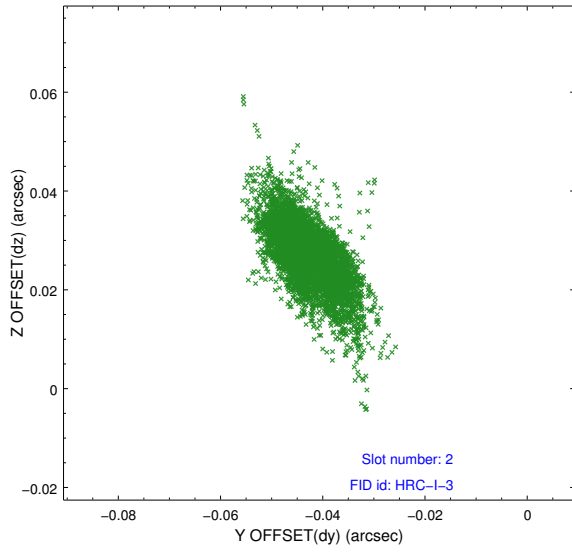
2.5.1 Slot 0



2.5.2 Slot 1



2.5.3 Slot 2



A Summary

A.1 Status

V&V Scientist	Beth Sundheim
V&V Date (YYYY-MM-DD)	2012.07.17
V&V Edition	1
V&V Disposition and Status	OK
V&V Charge Time	19.183900990129

A.2 Comments