

V&V Reference Report

L2 ASCDS Version : 8.4.5

Observation 12233 - L2 Version 2
Chandra X-Ray Center

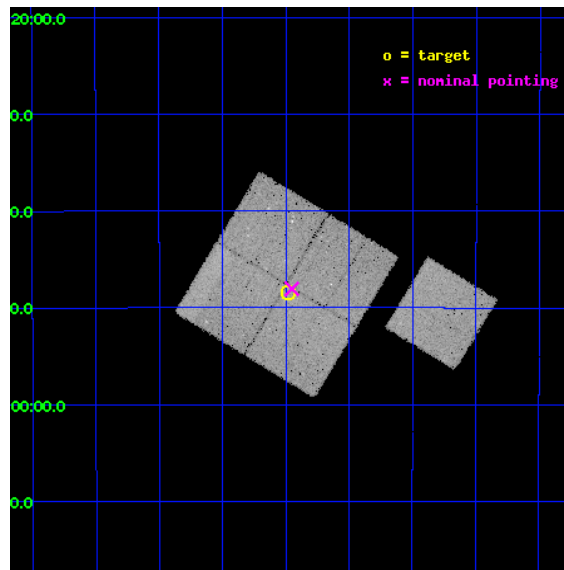
L2 Processing Date : Jun 30 2012

Contents

1	Front	2
2	OBI	3
2.1	OBI	3
2.1.1	Images	3
2.1.2	Bias	3
2.1.3	Parameters	4
2.1.4	Events	4
2.2	Compared Parameters	5
2.3	Aspect	6
2.4	Star Slots	9
2.4.1	Slot 3	9
2.4.2	Slot 4	10
2.4.3	Slot 5	11
2.4.4	Slot 6	12
2.4.5	Slot 7	13
2.5	FID Slots	14
2.5.1	Slot 0	14
2.5.2	Slot 1	15
2.5.3	Slot 2	16
A	Summary	17
A.1	Status	17
A.2	Comments	17

1 Front

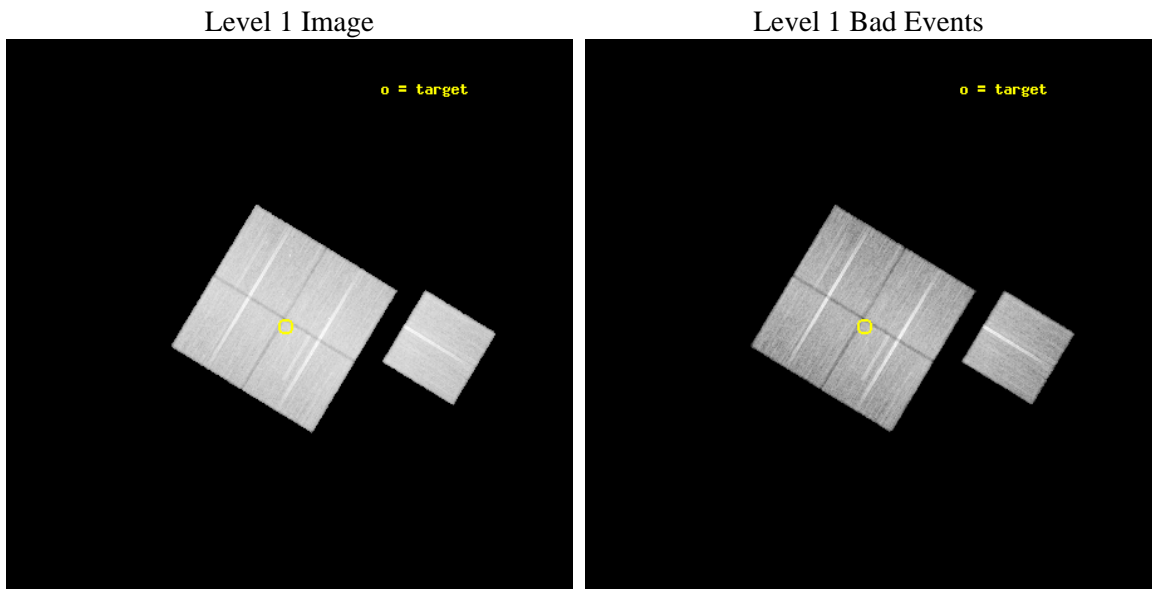
seq_num	900939	Sequence number
obs_id	12233	Observation id
title	The Chandra Deep Field-South Survey: An Ultradeep Chandra Legacy	P
observer	Dr. Harvey Tananbaum	Principal investigator
object	Chandra Deep Field-South	Source name
dtcycle	0	
cycle	P	events from which exps? Prim/Second/Both
ra_targ	53.12	Observer's specified target RA [deg]
dec_targ	-27.806389	Observer's specified target Dec [deg]
ra_nom	53.113160294085	Nominal RA [deg]
dec_nom	-27.801040879094	Nominal Dec [deg]
roll_nom	121.20550532705	Nominal Roll [deg]
revision	2	Processing version of data
ontime	36043.659297049	Sum of GTIs [s]
livetime	35572.722353377	Livetime [s]
ontime0	36037.377316594	Sum of GTIs [s]
ontime1	36043.659286976	Sum of GTIs [s]
ontime2	36040.518346488	Sum of GTIs [s]
ontime3	36043.659297049	Sum of GTIs [s]
ontime6	36043.659306884	Sum of GTIs [s]
l2events	124654	Number of level 2 events



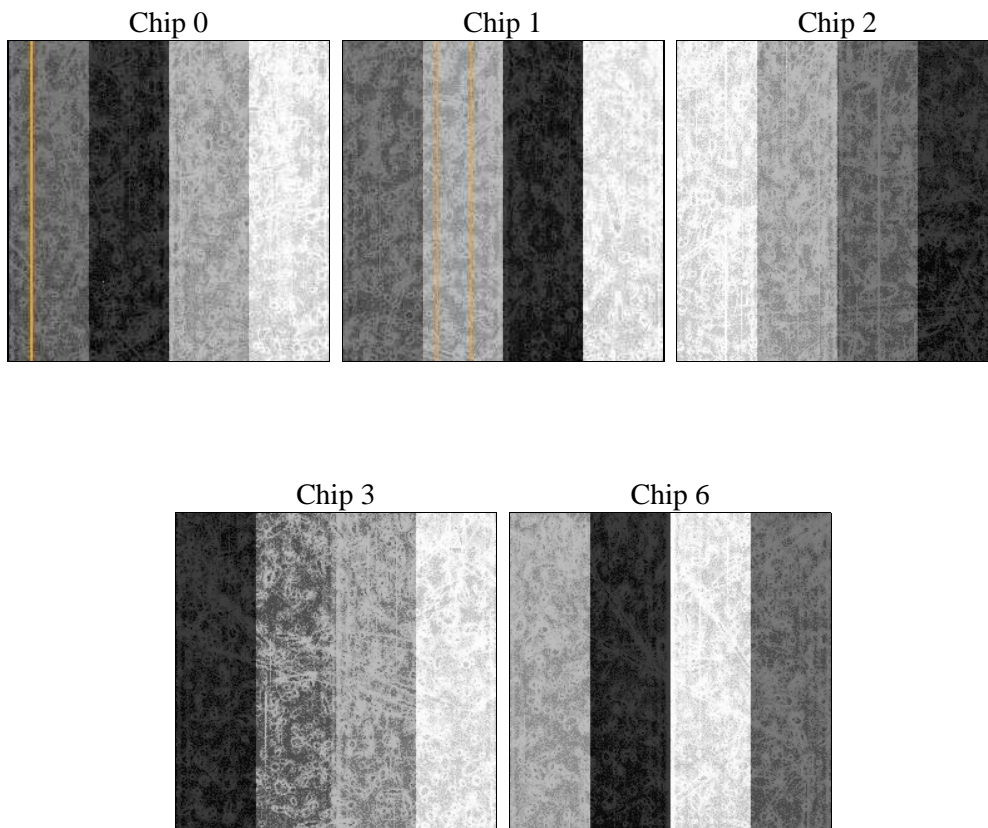
2 OBI

2.1 OBI

2.1.1 Images



2.1.2 Bias



2.1.3 Parameters

obi_num	0	Obi number	sched_exp_time	35997.146000	[s] Scheduled observation exposure time
ascdsver	8.4.5	Processing system revision	ontime	36043.659297049	Sum of GTIs [s]
caldbver	4.5.0	 	ontime0	36037.377316594	Sum of GTIs [s]
date	2012-06-30T03:09:56	Date and time of file creation	ontime1	36043.659286976	Sum of GTIs [s]
revision	2	Processing version of data	ontime2	36040.518346488	Sum of GTIs [s]
			ontime3	36043.659297049	Sum of GTIs [s]
			ontime6	36043.659306884	Sum of GTIs [s]
			l1events	1322161	Number of level 1 events

2.1.4 Events

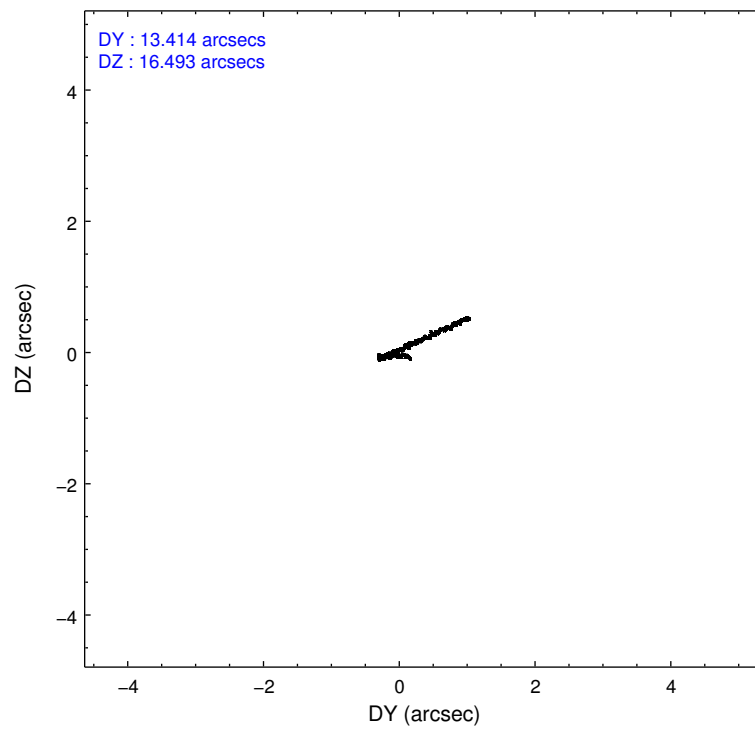
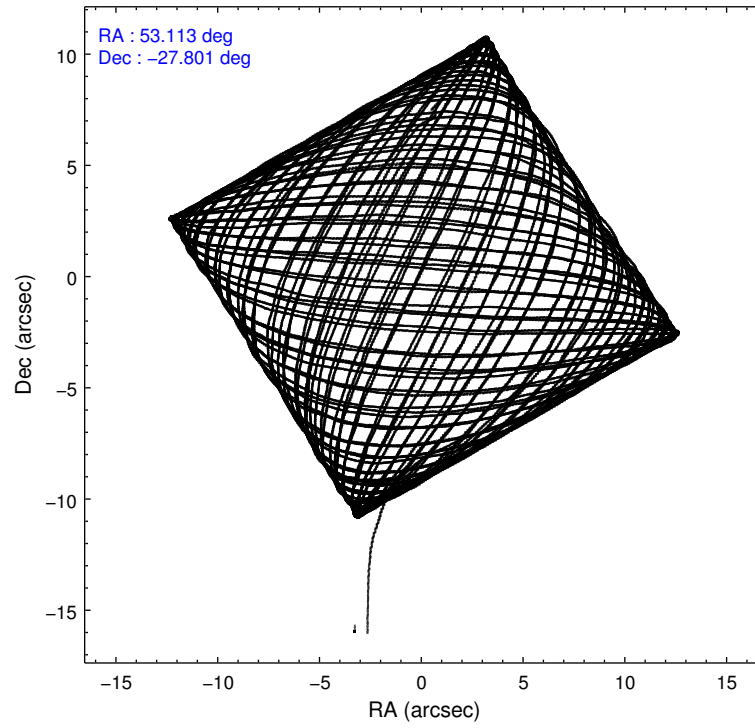
	ccd 0	ccd 1	ccd 2	ccd 3	ccd 6
level 1 events	250014	255794	279850	268217	268286
rejected events	219813	222954	251090	240723	238307
rejected %	87%	87%	89%	89%	88%

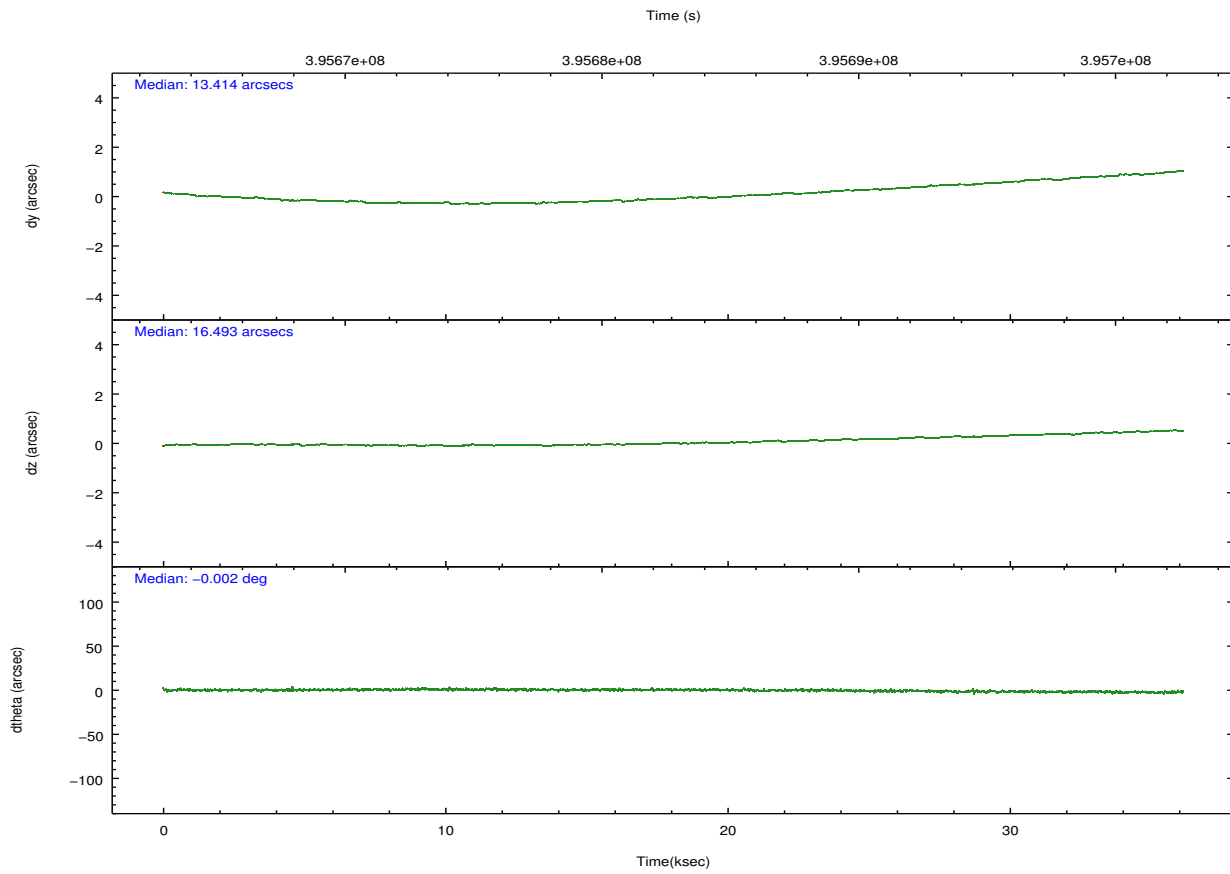
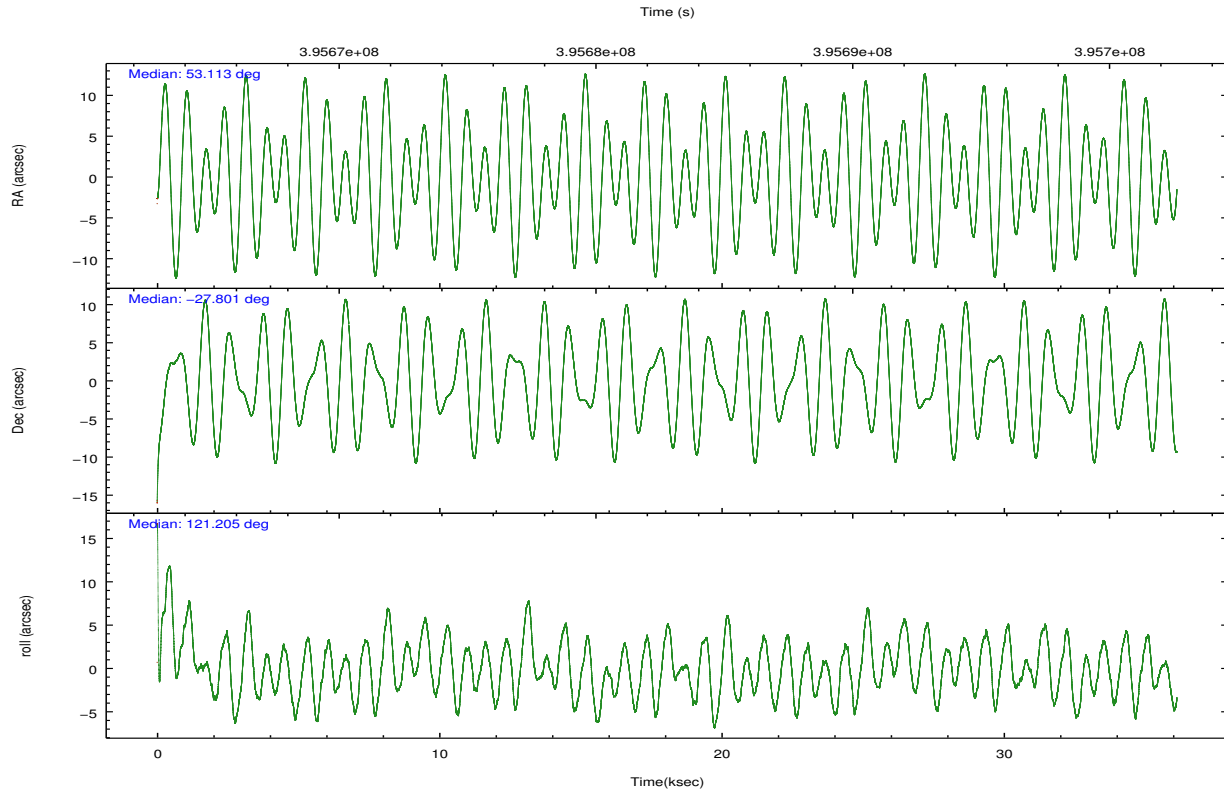
	ccd 0	ccd 1	ccd 2	ccd 3	ccd 6
grade 0 events	10549	11668	10235	9398	10355
	4%	4%	3%	3%	3%
grade 1 events	127	124	140	180	142
	0%	0%	0%	0%	0%
grade 2 events	7461	7704	7153	6264	6763
	2%	3%	2%	2%	2%
grade 3 events	3247	3361	2960	3143	3178
	1%	1%	1%	1%	1%
grade 4 events	3089	3358	3044	2957	3143
	1%	1%	1%	1%	1%
grade 5 events	10823	11850	10043	12467	12145
	4%	4%	3%	4%	4%
grade 6 events	5861	6754	5374	5741	6542
	2%	2%	1%	2%	2%
grade 7 events	208857	210975	240901	228067	226018
	83%	82%	86%	85%	84%

2.2 Compared Parameters

Parameter	Planned	Actual	Parameter	Planned	Actual
Instrument	ACIS	ACIS	Obspar format version number	7	7
Detector	ACIS-01236	ACIS-01236	Obspar file type	PREDICTED	ACTUAL
Grating	NONE	NONE	Obspar update status	NONE	UPDATED
Data mode	VFAINT	VFAINT	CCD I0 on	Y	Y
Observation mode	POINTING	POINTING	CCD I1 on	Y	Y
[deg] Pointing RA	53.140458	53.11316029408526	CCD I2 on	Y	Y
[deg] Pointing Dec	-27.814177	-27.80104087909418	CCD I3 on	Y	Y
[deg] Pointing Roll	121.009548	121.2055053270478	CCD S0 on	N	N
[mm] SIM focus pos	-0.782348	-0.7809083437167272	CCD S1 on	N	N
[mm] SIM defocus	0	0.001439871863259334	CCD S2 on	O1	Y
[mm] SIM translation stage pos	-233.592463	-233.5874344608287	CCD S3 on	N	N
[mm] SIM translation stage offset	0	-0.005018542100998502	CCD S4 on	N	N
[s] Observation start time (MET)	395664823.184000	395663093.6867	CCD S5 on	N	N
Observation start date	2010-07-16T10:52:37	2010-07-16T10:24:53	Number of optional ACIS chips dropped	0	0
[s] Observation end time (MET)	395700820.184000	395701059.68864	On-chip summing requested	N	N
Observation end date	2010-07-16T20:52:34	2010-07-16T20:57:39	Subarray requested	NONE	NONE
Read mode	TIMED	TIMED	Alternating exposures requested	N	N
			[s] Primary exposure time	0.000000	3.1

2.3 Aspect



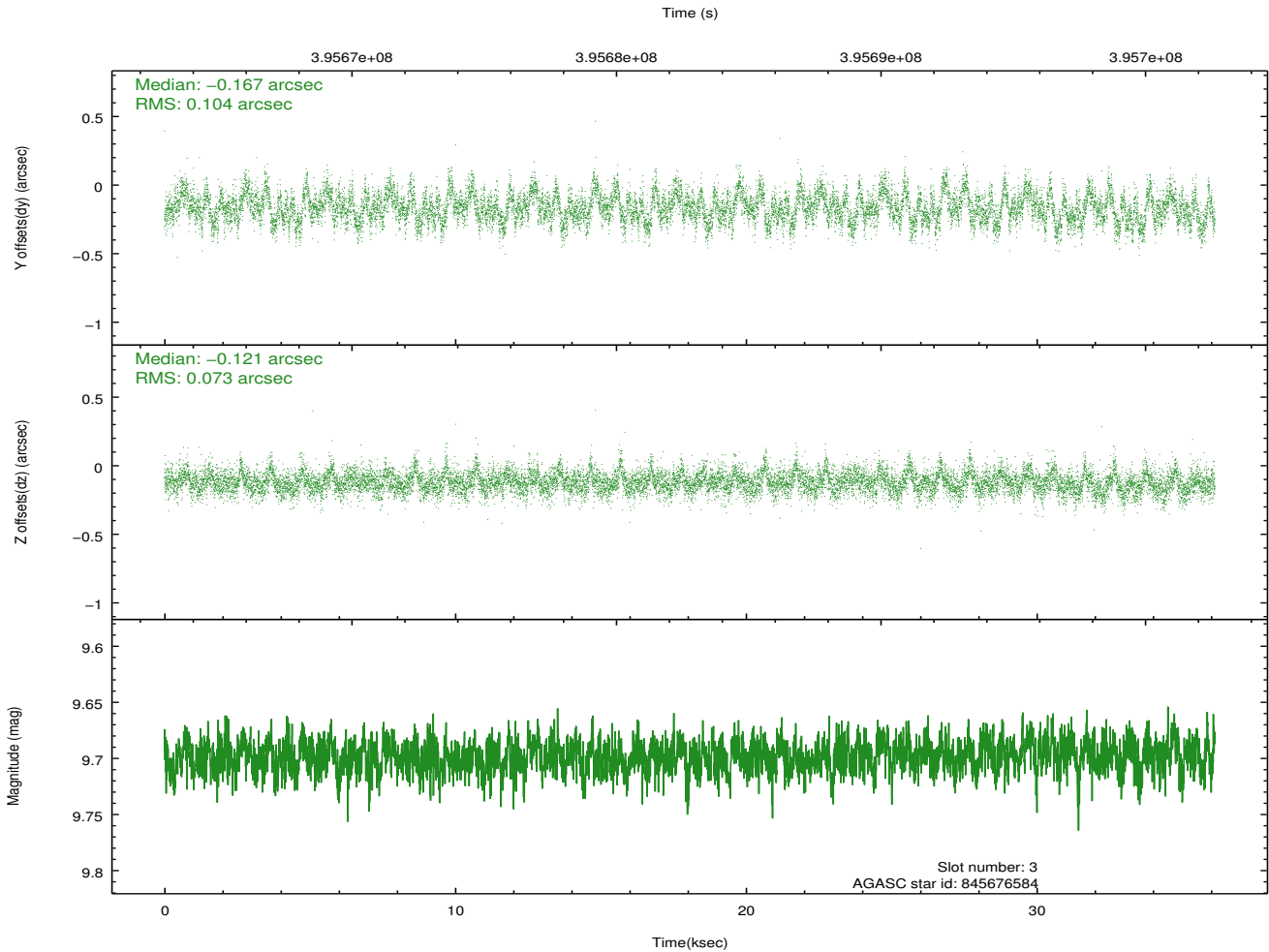
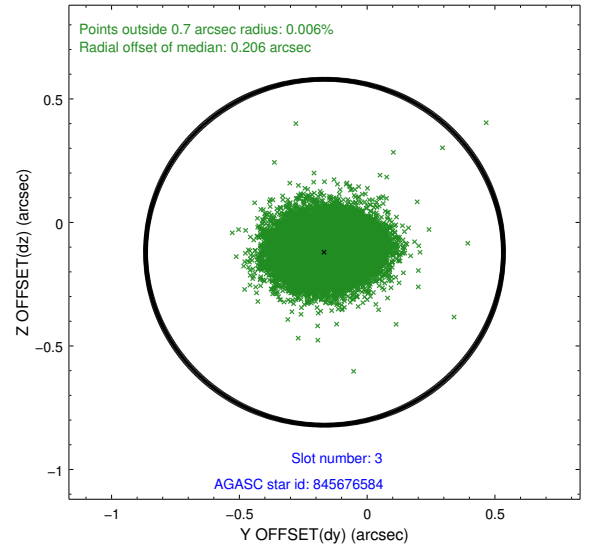
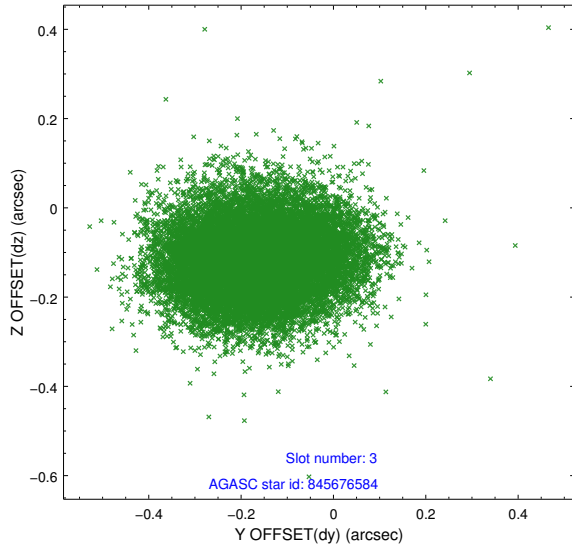


Slot Statistics

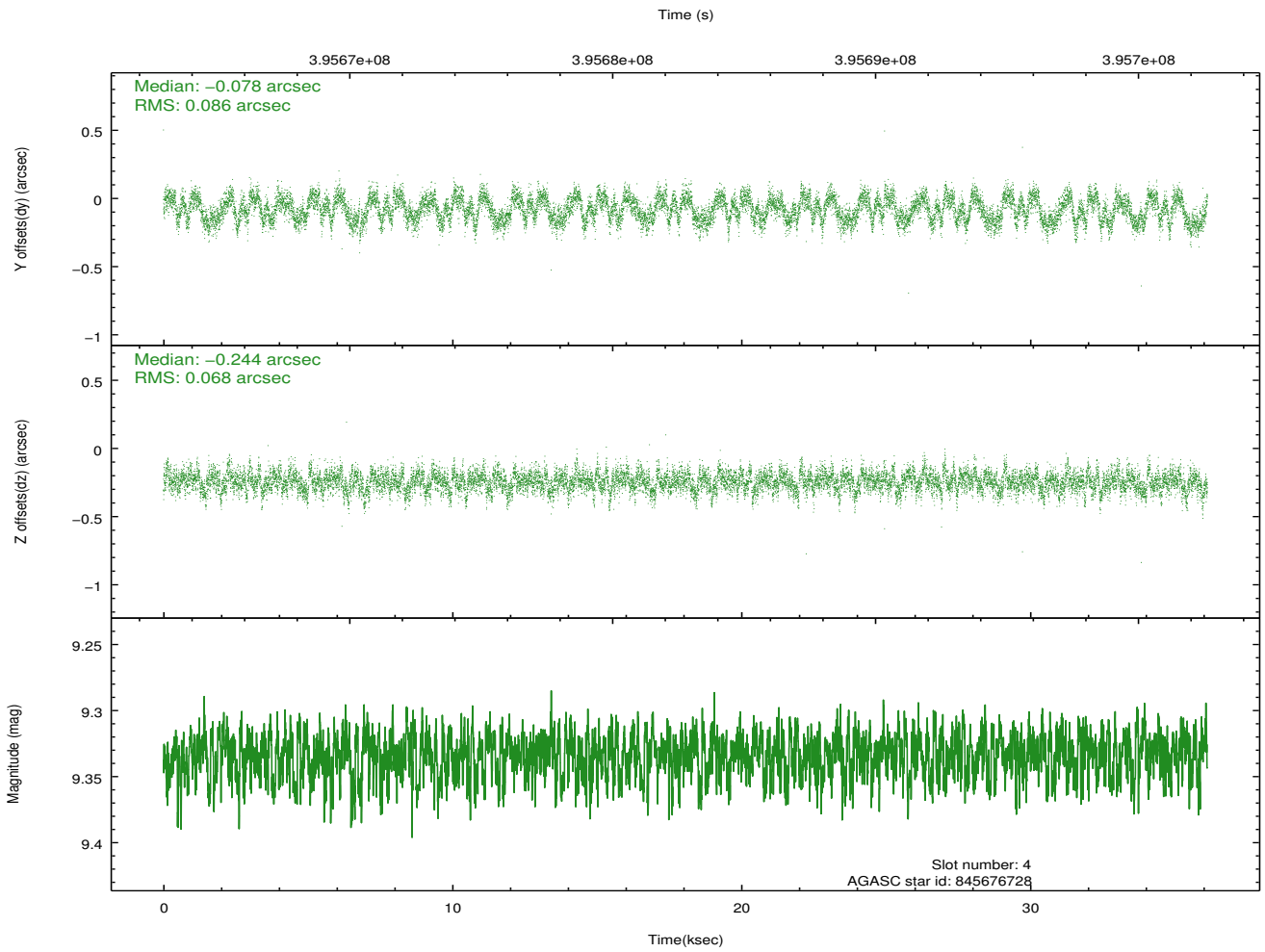
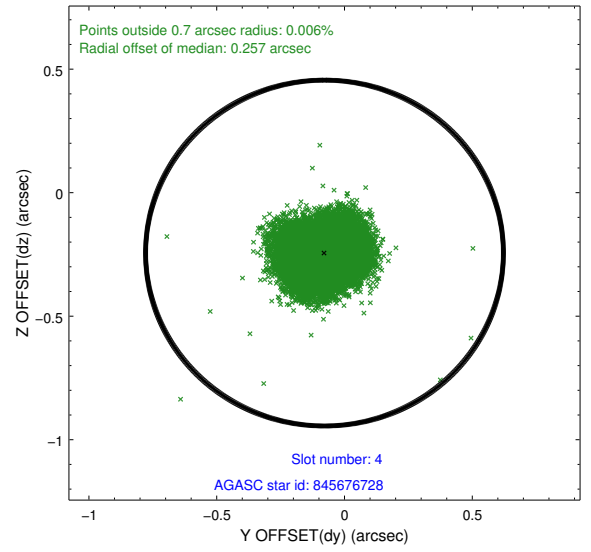
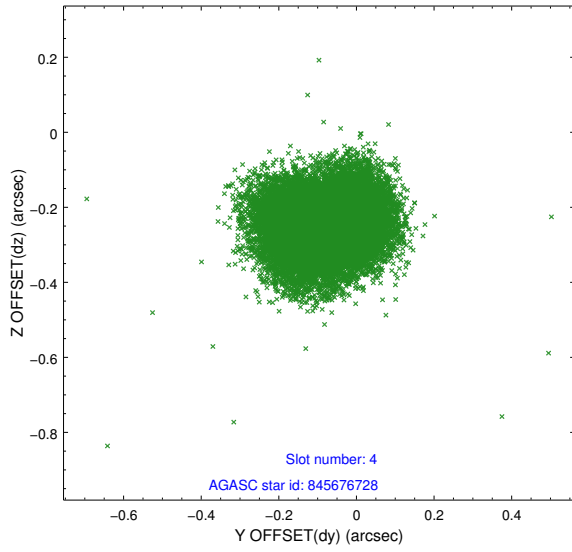
slot	status	id	mag	n_pts	med_dy	med_dz	dr1	dr2	ra	dec	mean_y	mean_z
0	FID	ACIS-I-1	7.03	8813	-0.099	-0.079	0.008	0.015	0.000000	0.000000	925.85	-840.30
1	FID	ACIS-I-4	6.95	8811	0.070	0.115	0.014	0.035	0.000000	0.000000	2146.08	1059.68
2	FID	ACIS-I-6	7.02	8812	-0.069	0.030	0.014	0.044	0.000000	0.000000	391.84	1701.82
3	GUIDE	845676584	9.70	17597	-0.167	-0.121	0.135	0.219	52.264247	-27.542890	2269.54	1899.29
4	GUIDE	845676728	9.33	17599	-0.078	-0.244	0.118	0.181	52.877179	-27.664318	894.39	442.09
5	GUIDE	845676936	9.48	17591	-0.195	0.008	0.141	0.216	52.843773	-27.880153	281.85	931.95
6	GUIDE	845807880	8.80	17611	0.137	0.107	0.081	0.128	53.382027	-27.886093	-618.13	-524.69
7	GUIDE	845813656	10.18	17564	0.289	0.240	0.166	0.257	53.922767	-28.083703	-2117.97	-1625.44

2.4 Star Slots

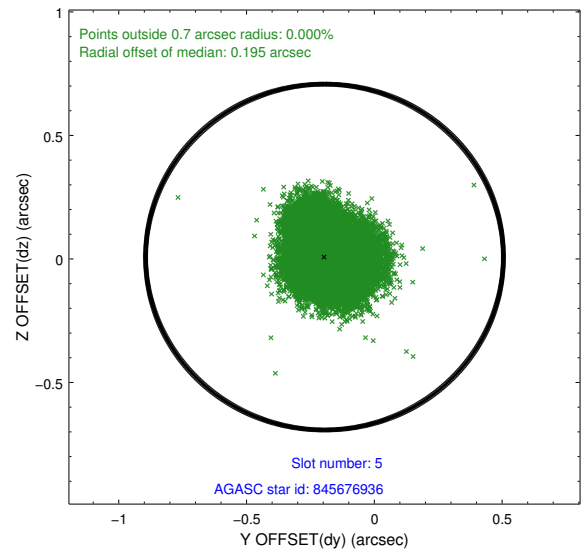
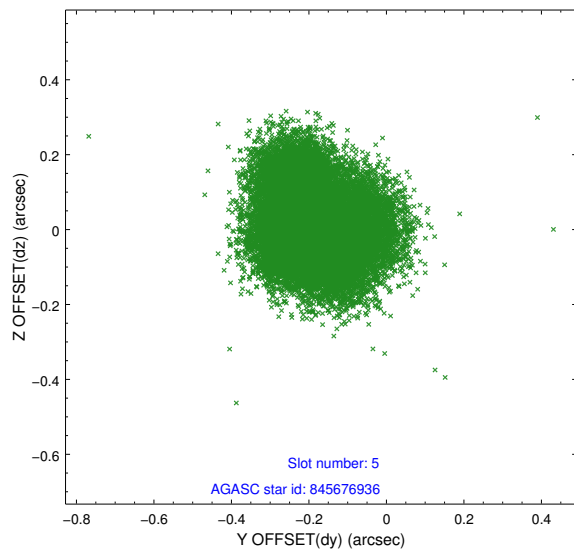
2.4.1 Slot 3



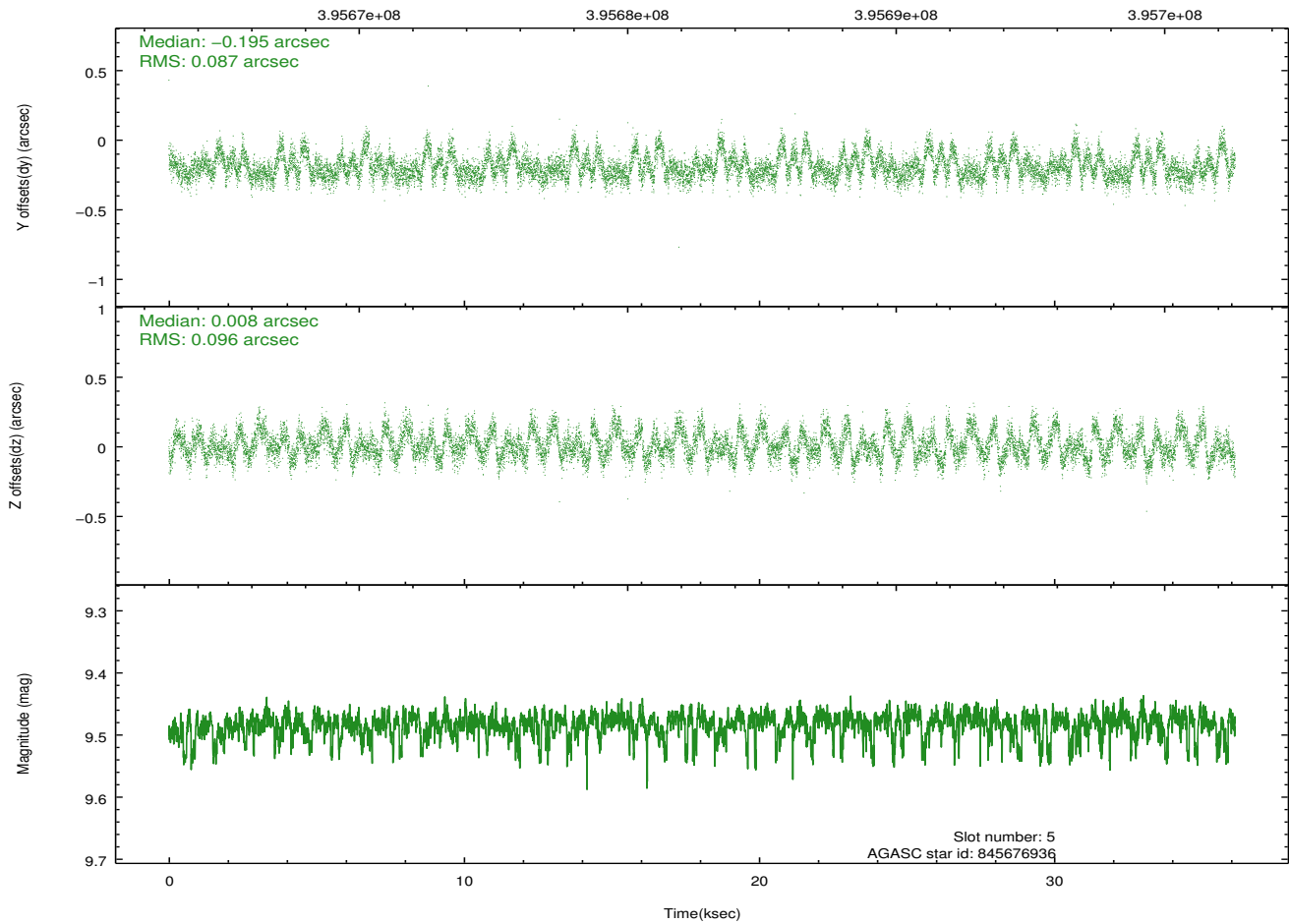
2.4.2 Slot 4



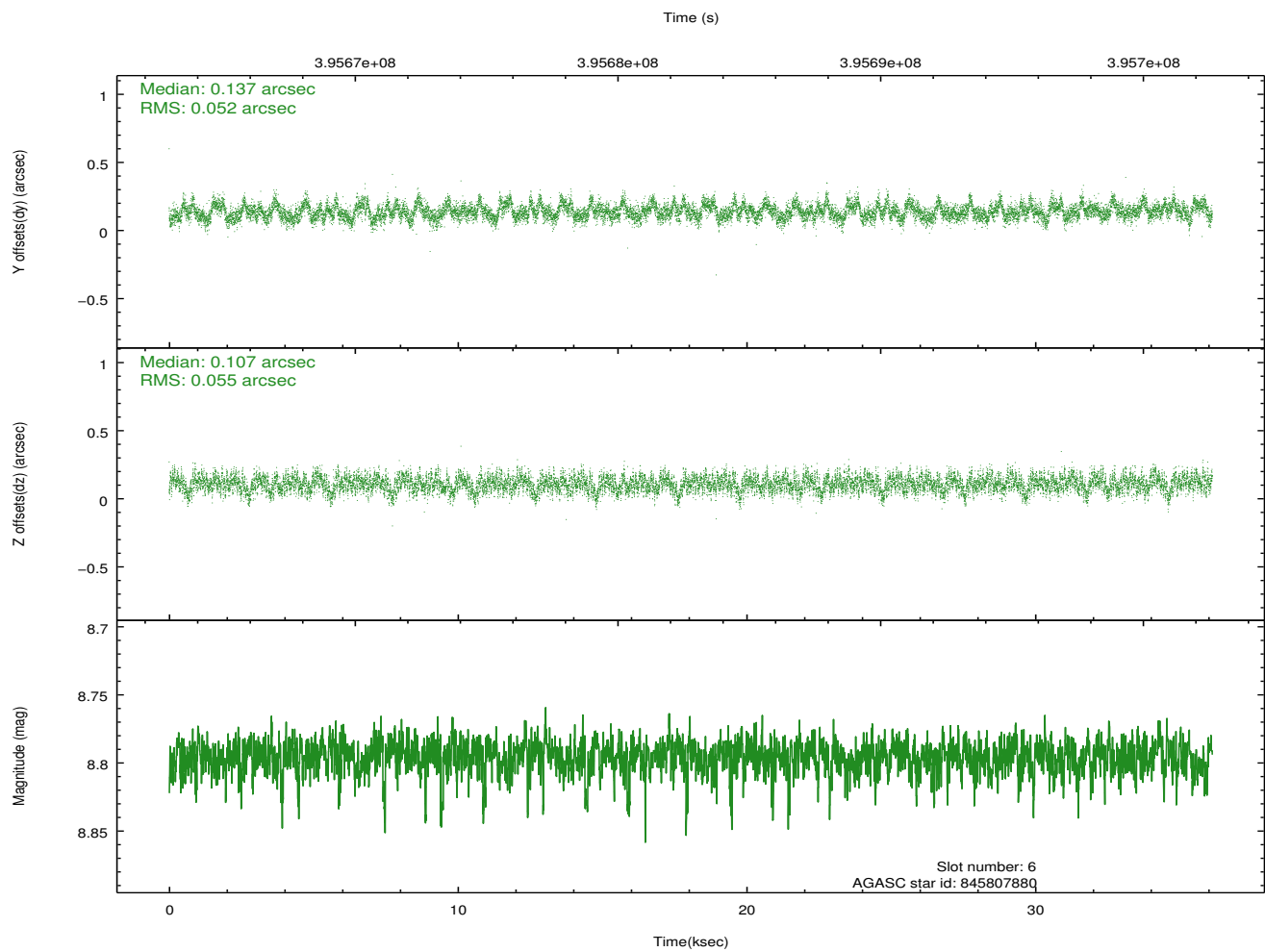
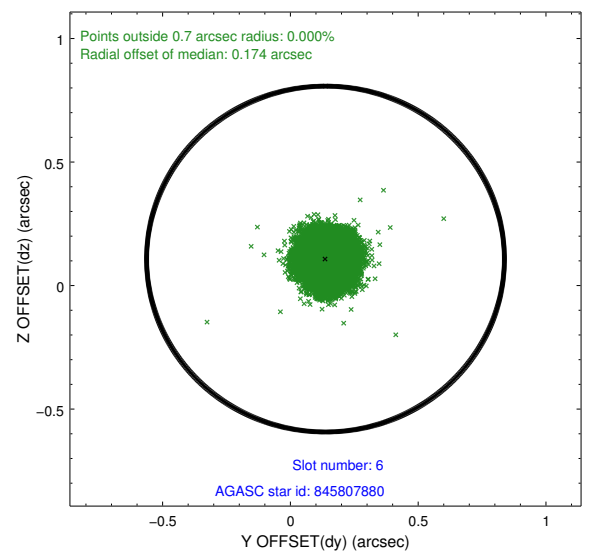
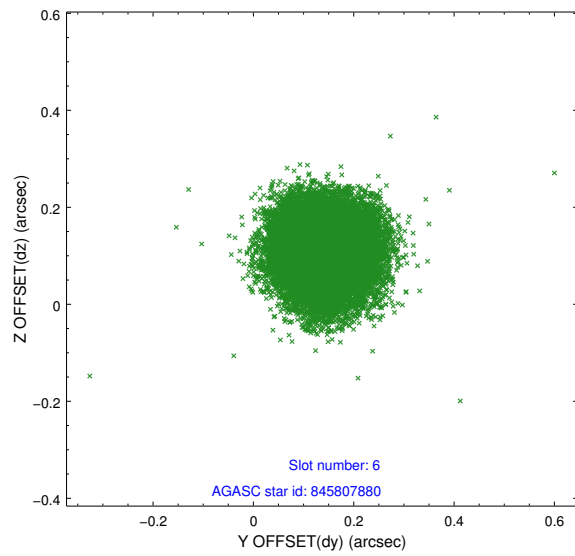
2.4.3 Slot 5



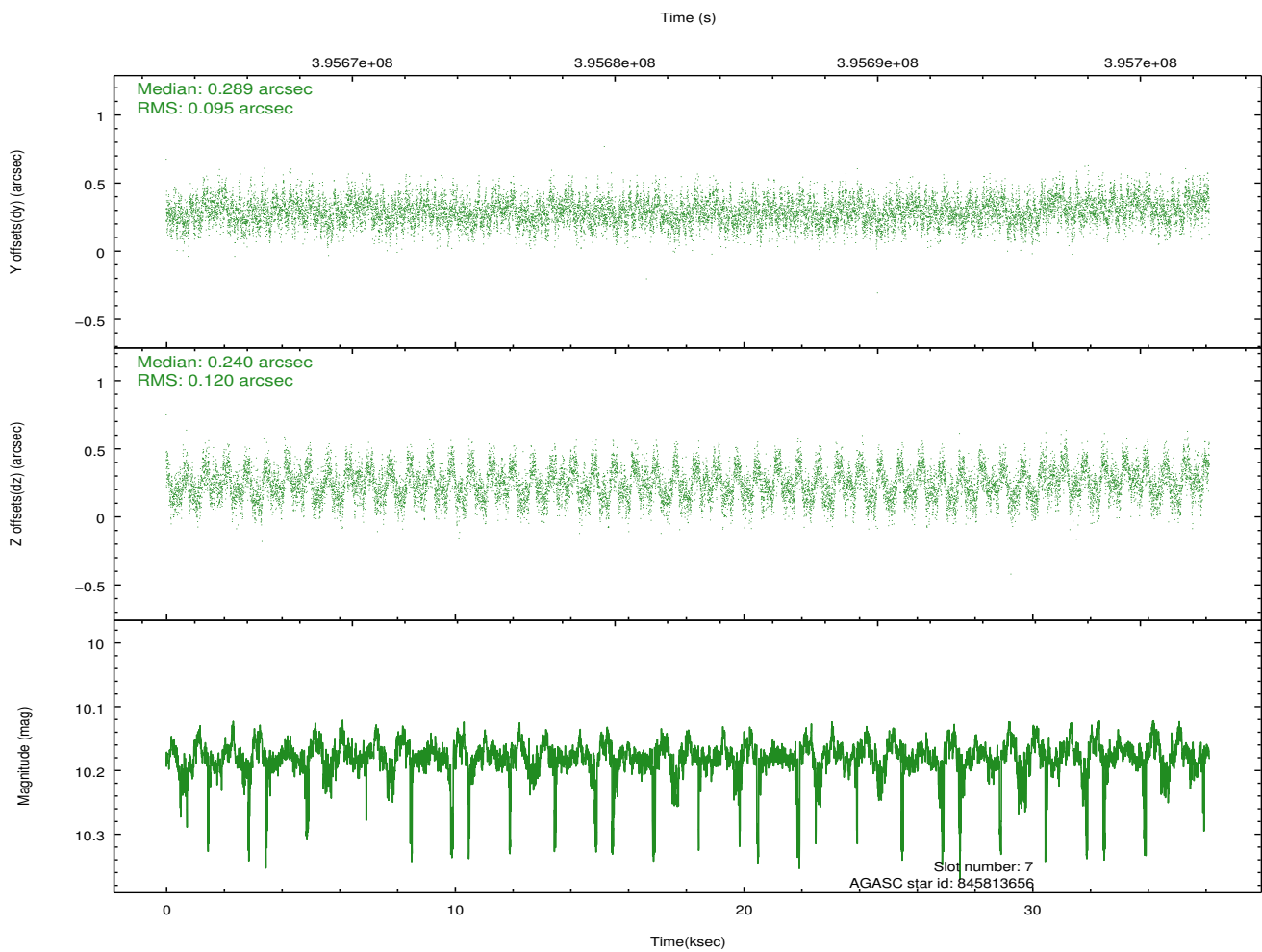
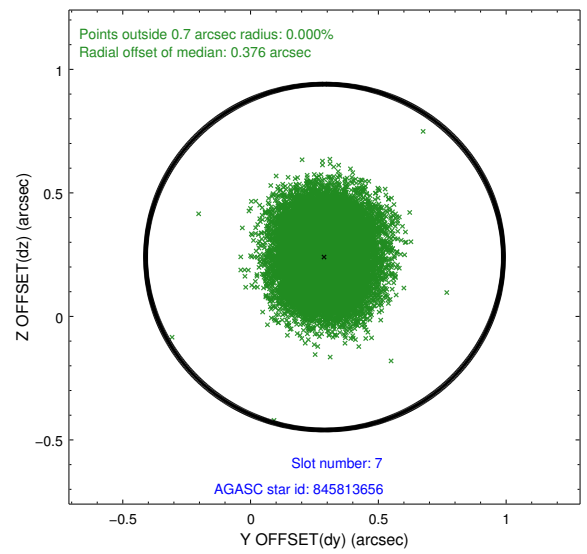
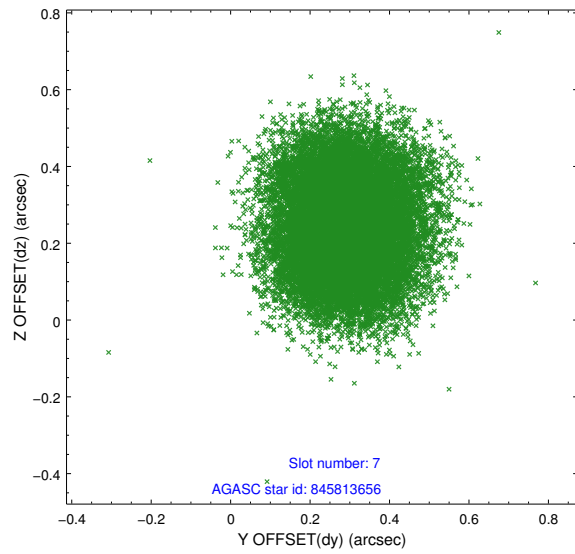
Time (s)



2.4.4 Slot 6

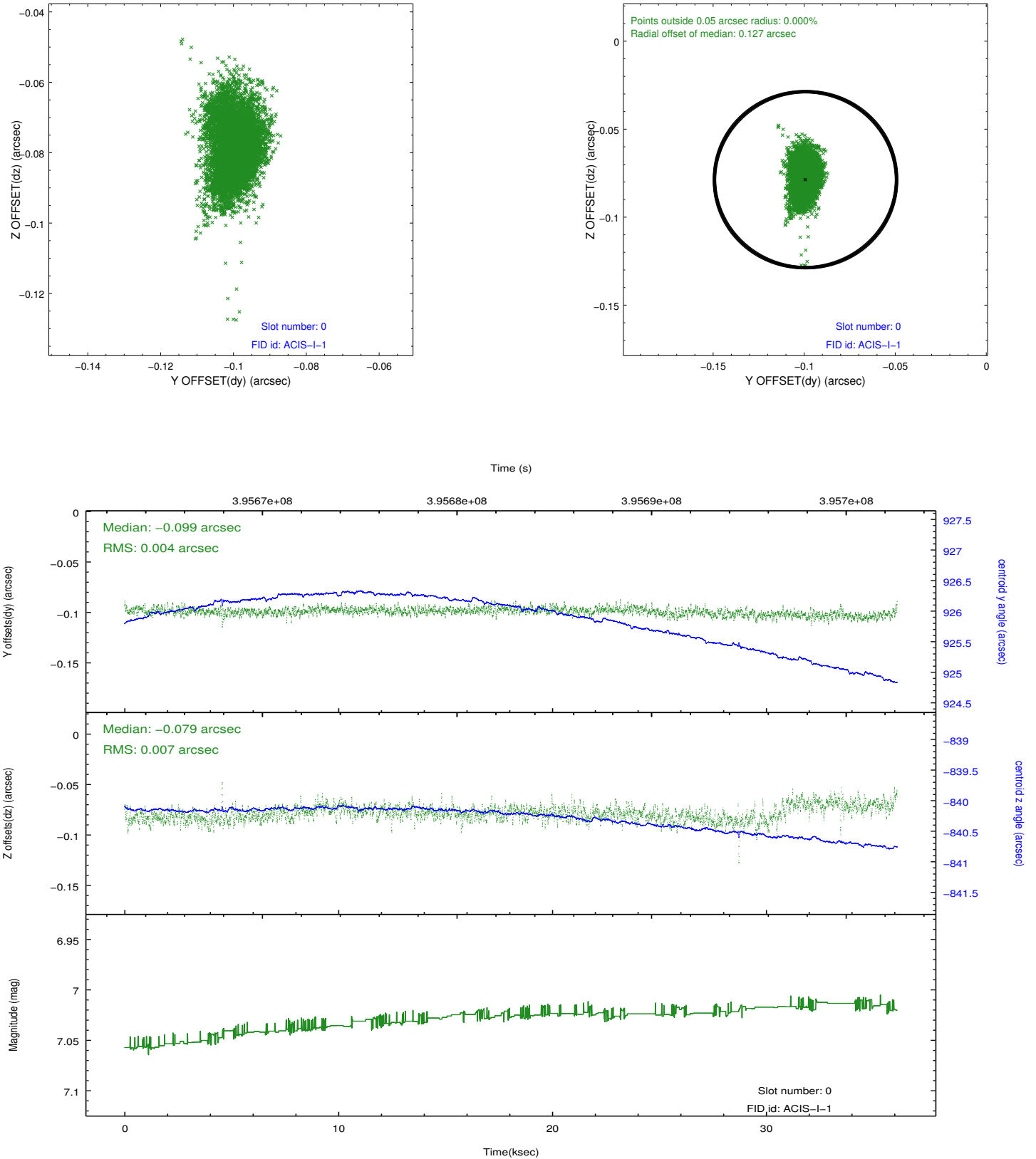


2.4.5 Slot 7

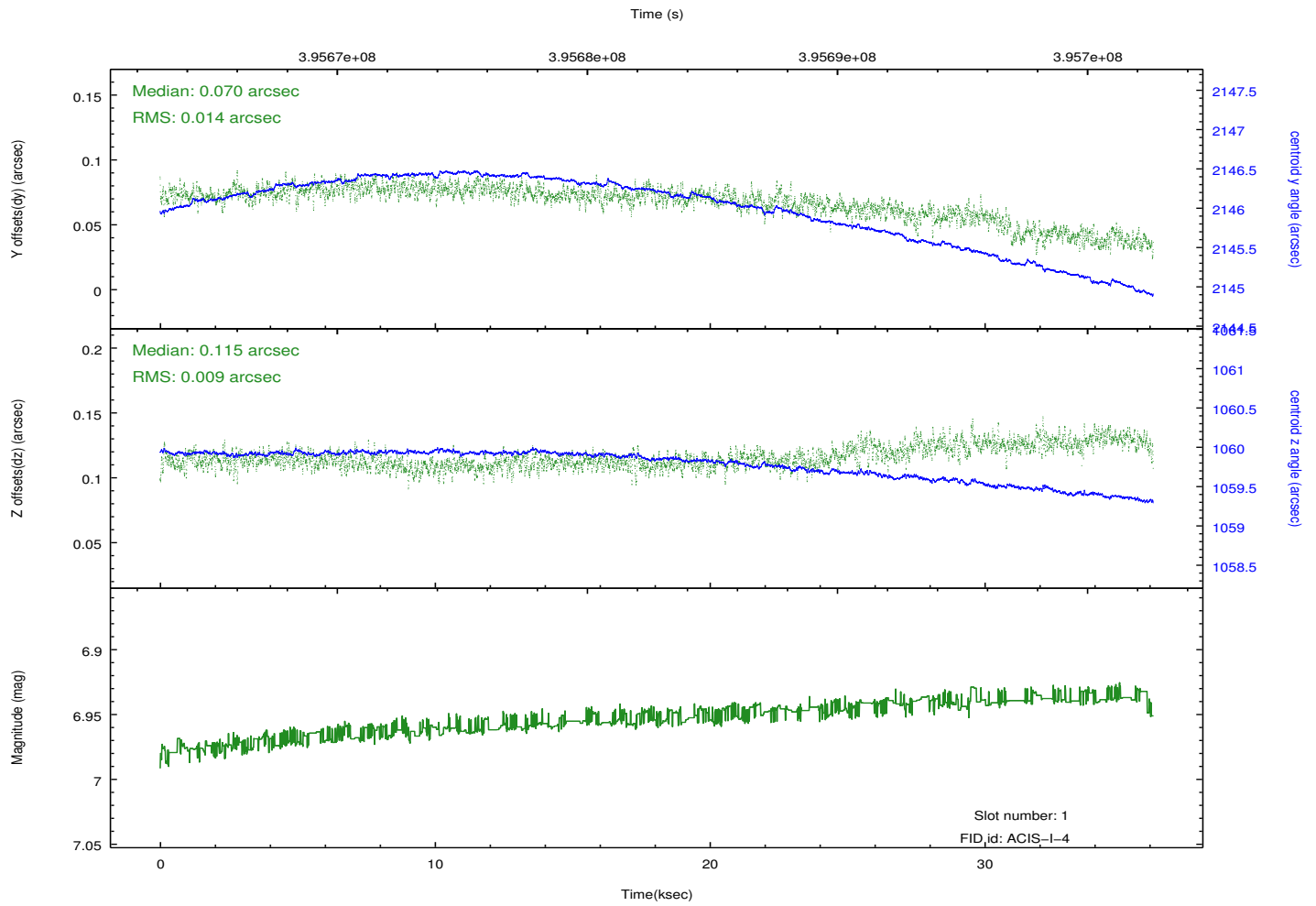
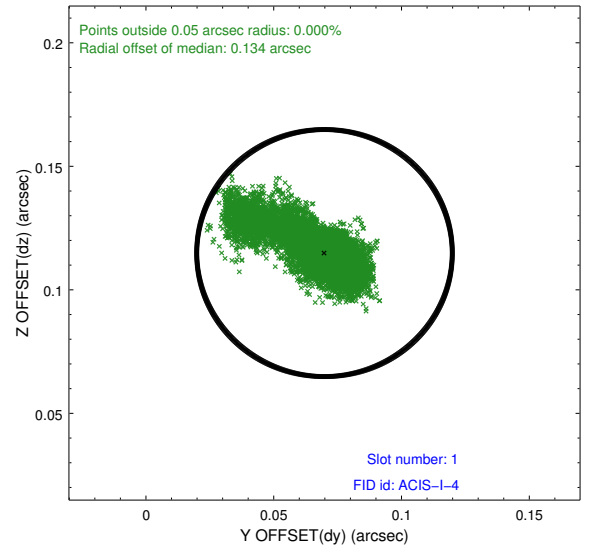
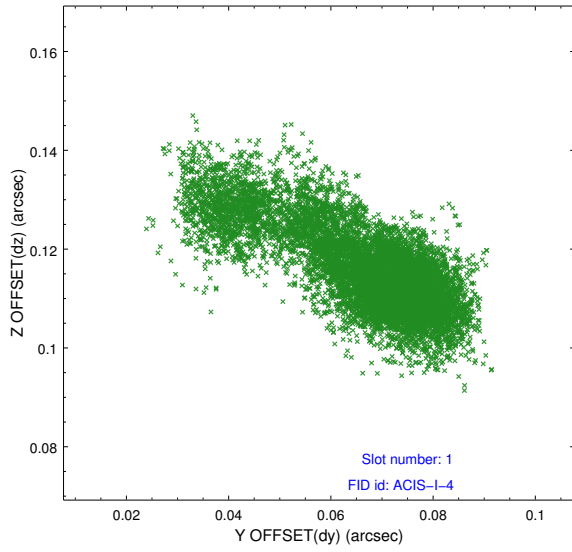


2.5 FID Slots

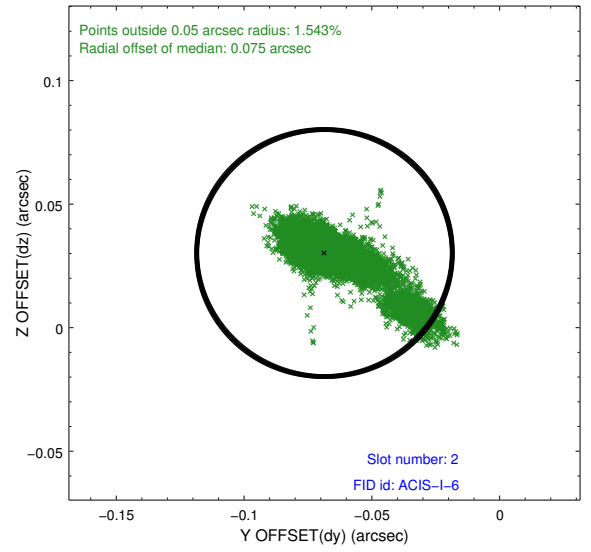
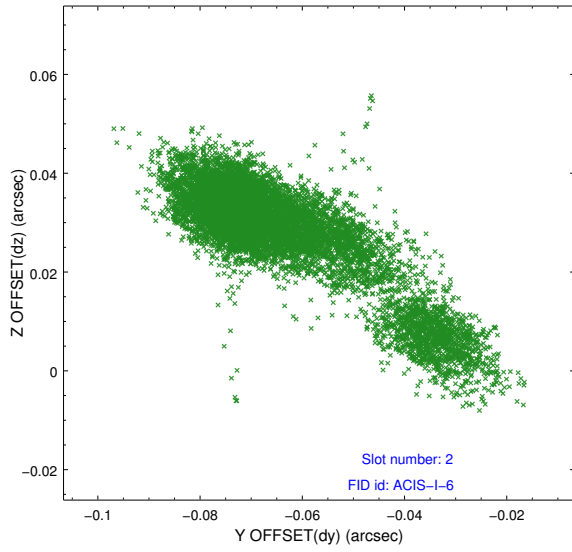
2.5.1 Slot 0



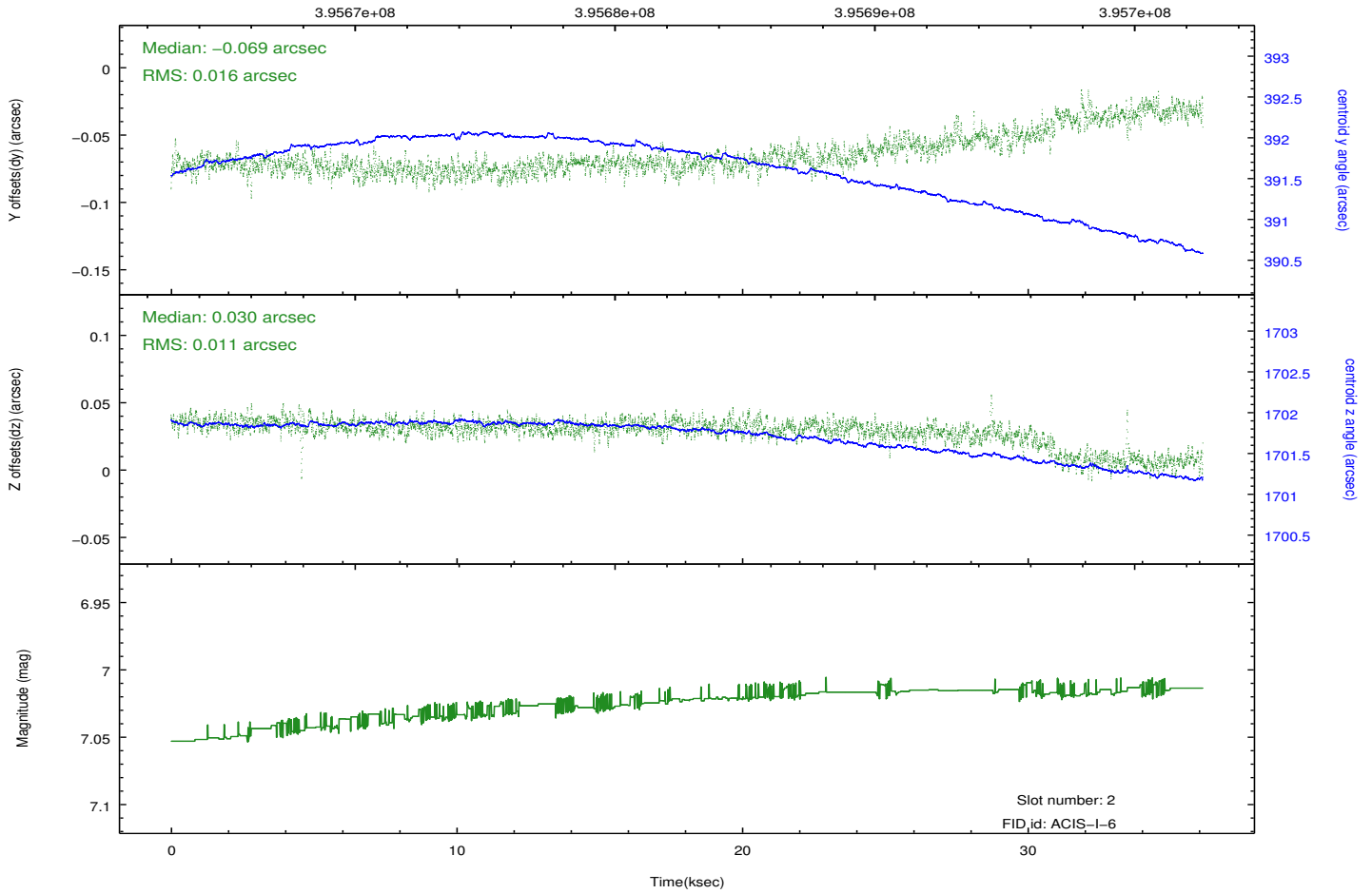
2.5.2 Slot 1



2.5.3 Slot 2



Time (s)



A Summary

A.1 Status

V&V Scientist	Jen Lauer
V&V Date (YYYY-MM-DD)	2012.07.09
V&V Edition	1
V&V Disposition and Status	OK
V&V Charge Time	36.043659297049

A.2 Comments