

V&V Reference Report

L2 ASCDS Version : 8.4.3

Observation 12343 - L2 Version 2
Chandra X-Ray Center

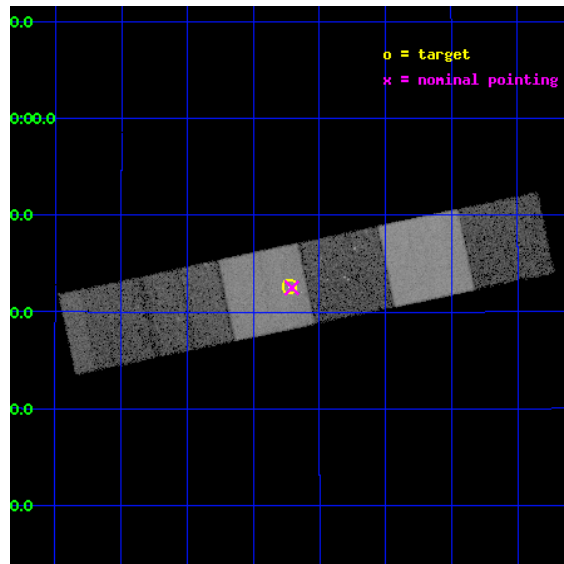
L2 Processing Date : Mar 19 2012

Contents

1	Front	2
2	OBI	3
2.1	OBI	3
2.1.1	Images	3
2.1.2	Bias	3
2.1.3	Parameters	4
2.1.4	Events	4
2.2	Compared Parameters	5
2.3	Aspect	6
2.4	Star Slots	9
2.4.1	Slot 3	9
2.4.2	Slot 4	10
2.4.3	Slot 5	11
2.4.4	Slot 6	12
2.4.5	Slot 7	13
2.5	FID Slots	14
2.5.1	Slot 0	14
2.5.2	Slot 1	15
2.5.3	Slot 2	16
A	Summary	17
A.1	Status	17
A.2	Comments	17

1 Front

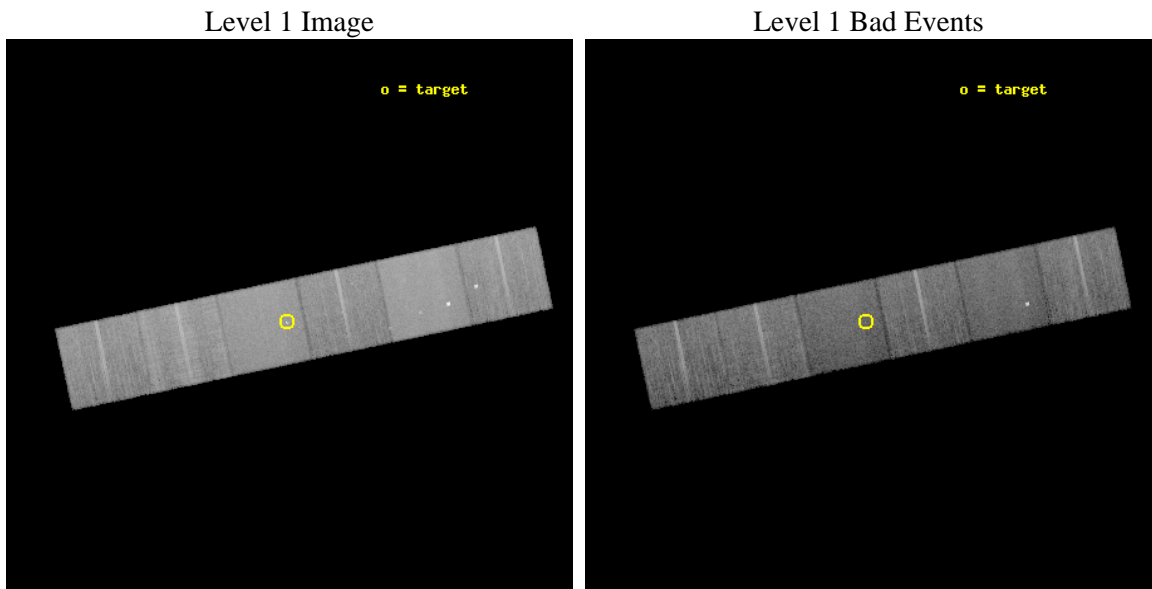
seq_num	200679	Sequence number
obs_id	12343	Observation id
title	Making planetary transits visible in X-rays	Proposal title
observer	Dr. Katja Poppenhaeager	Principal investigator
object	HD 189733	Source name
dtycycle	0	
cycle	P	events from which exps? Prim/Second/Both
ra_targ	300.182083	Observer's specified target RA [deg]
dec_targ	22.710111	Observer's specified target Dec [deg]
ra_nom	300.17712043372	Nominal RA [deg]
dec_nom	22.70847123767	Nominal Dec [deg]
roll_nom	168.08605560393	Nominal Roll [deg]
revision	2	Processing version of data
ontime	20050.606199503	Sum of GTIs [s]
livetime	19796.713350779	Livetime [s]
ontime4	20050.647239506	Sum of GTIs [s]
ontime5	20050.5651595	Sum of GTIs [s]
ontime6	20044.042128623	Sum of GTIs [s]
ontime7	20050.606199503	Sum of GTIs [s]
ontime8	20050.483079493	Sum of GTIs [s]
ontime9	20050.44203949	Sum of GTIs [s]
l2events	203690	Number of level 2 events



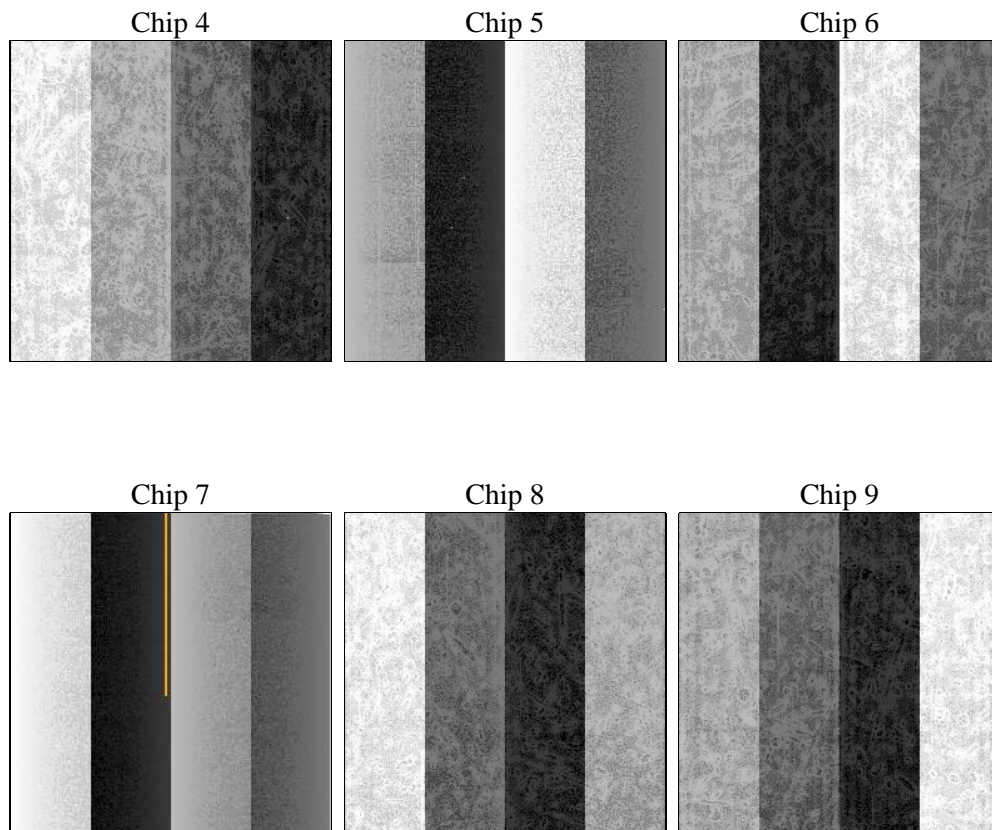
2 OBI

2.1 OBI

2.1.1 Images



2.1.2 Bias



2.1.3 Parameters

obi_num	0	Obi number	sched_exp_time	20000.000000	[s] Scheduled observation exposure time
ascdsver	8.4.3	Processing system revision	ontime	20050.606199503	Sum of GTIs [s]
caldsver	4.4.8	 	ontime4	20050.647239506	Sum of GTIs [s]
date	2012-03-19T11:23:11	Date and time of file creation	ontime5	20050.5651595	Sum of GTIs [s]
revision	2	Processing version of data	ontime6	20044.042128623	Sum of GTIs [s]
			ontime7	20050.606199503	Sum of GTIs [s]
			ontime8	20050.483079493	Sum of GTIs [s]
			ontime9	20050.44203949	Sum of GTIs [s]
			l1events	877179	Number of level 1 events

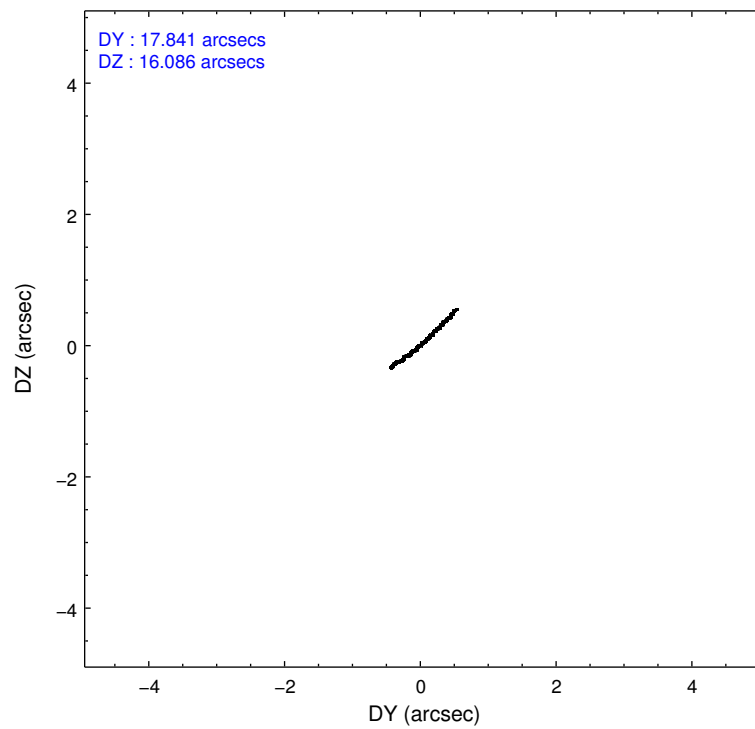
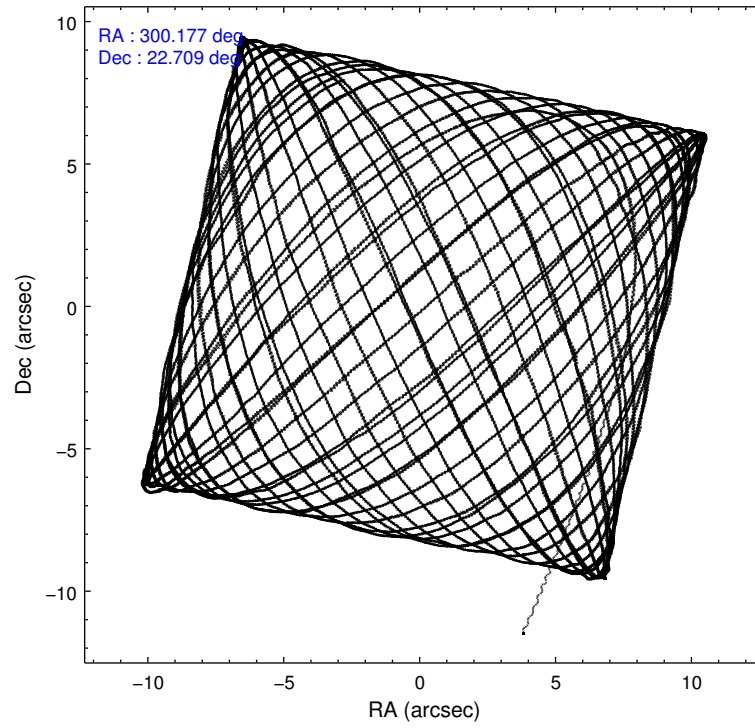
2.1.4 Events

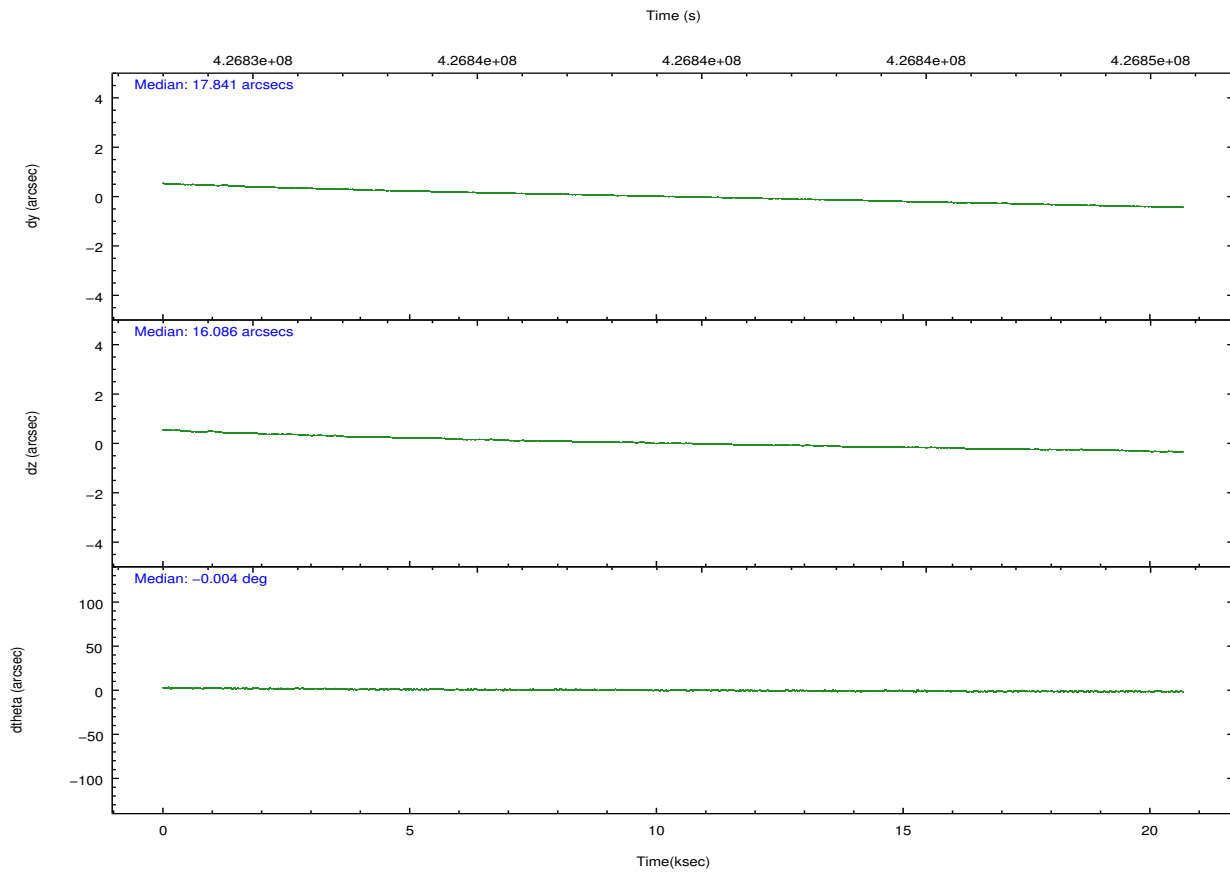
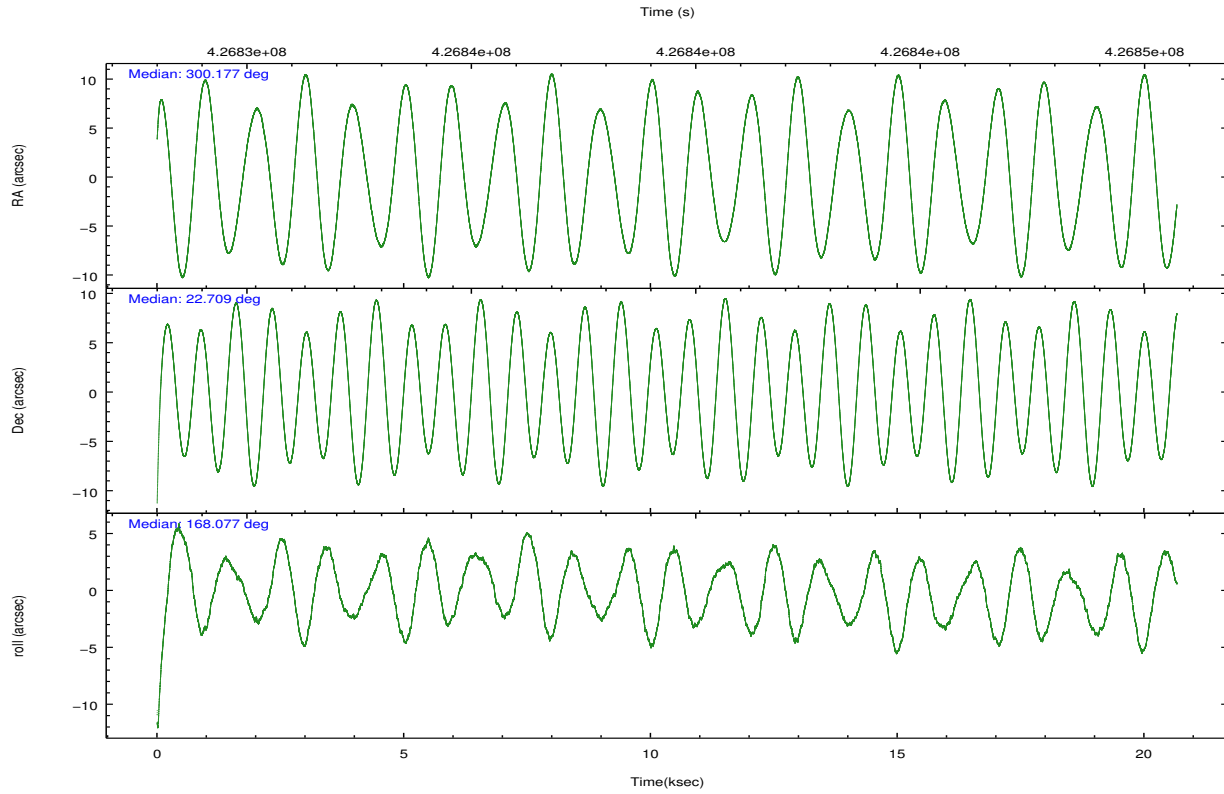
	ccd 4	ccd 5	ccd 6	ccd 7	ccd 8	ccd 9		ccd 4	ccd 5	ccd 6	ccd 7	ccd 8	ccd 9
level 1 events	138001	188344	119410	154484	158114	118826	grade 0 events	7781	6595	4986	6679	11624	5469
rejected events	120942	97249	105368	85006	116532	103930		5%	3%	4%	4%	7%	4%
rejected %	87%	51%	88%	55%	73%	87%	grade 1 events	155	324	81	219	120	64
								0%	0%	0%	0%	0%	0%
							grade 2 events	3666	28873	3186	14418	9900	3248
								2%	15%	2%	9%	6%	2%
							grade 3 events	1508	3347	1450	6027	4447	1587
								1%	1%	1%	3%	2%	1%
							grade 4 events	1583	3241	1344	6102	4067	1528
								1%	1%	1%	3%	2%	1%
							grade 5 events	5679	14414	5759	15933	8226	6481
								4%	7%	4%	10%	5%	5%
							grade 6 events	2523	49067	3080	36261	11549	3068
								1%	26%	2%	23%	7%	2%
							grade 7 events	115106	82483	99524	68845	108181	97381
								83%	43%	83%	44%	68%	81%

2.2 Compared Parameters

Parameter	Planned	Actual	Parameter	Planned	Actual
Instrument	ACIS	ACIS	Obspar format version number	7	7
Detector	ACIS-456789	ACIS-456789	Obspar file type	PREDICTED	ACTUAL
Grating	NONE	NONE	Obspar update status	NONE	UPDATED
Data mode	FAINT	FAINT	CCD I0 on	N	N
Observation mode	POINTING	POINTING	CCD I1 on	N	N
[deg] Pointing RA	300.205182	300.1771204337202	CCD I2 on	N	N
[deg] Pointing Dec	22.717306	22.70847123767021	CCD I3 on	N	N
[deg] Pointing Roll	167.918596	168.086055603926	CCD S0 on	O1	Y
[mm] SIM focus pos	-0.684267	-0.6828225247311905	CCD S1 on	O3	Y
[mm] SIM defocus	0	0.001444936568705701	CCD S2 on	O5	Y
[mm] SIM translation stage pos	-190.132523	-190.1400660498719	CCD S3 on	Y	Y
[mm] SIM translation stage offset	0	0.00754346686406393	CCD S4 on	O4	Y
Phase constraints	Y	Y	CCD S5 on	O2	Y
[d] Phase period	2.218573	2.218573	Number of optional ACIS chips dropped	0	0
[d] Phase epoch (MJD)	55563.490403	55563.490403	On-chip summing requested	N	N
Phase start	0.947800	0.947800	Subarray requested	NONE	NONE
Phase end	0.052200	0.052200	Alternating exposures requested	N	N
Phase start error	0.010400	0.010400	[s] Primary exposure time	0.000000	3.2
Phase end error	0.010400	0.010400			
[s] Observation start time (MET)	426829694.184000	426828444.91142			
Observation start date	2011-07-12T03:47:08	2011-07-12T03:27:24			
[s] Observation end time (MET)	426849694.184000	426850974.41259			
Observation end date	2011-07-12T09:20:28	2011-07-12T09:42:54			
Read mode	TIMED	TIMED			

2.3 Aspect



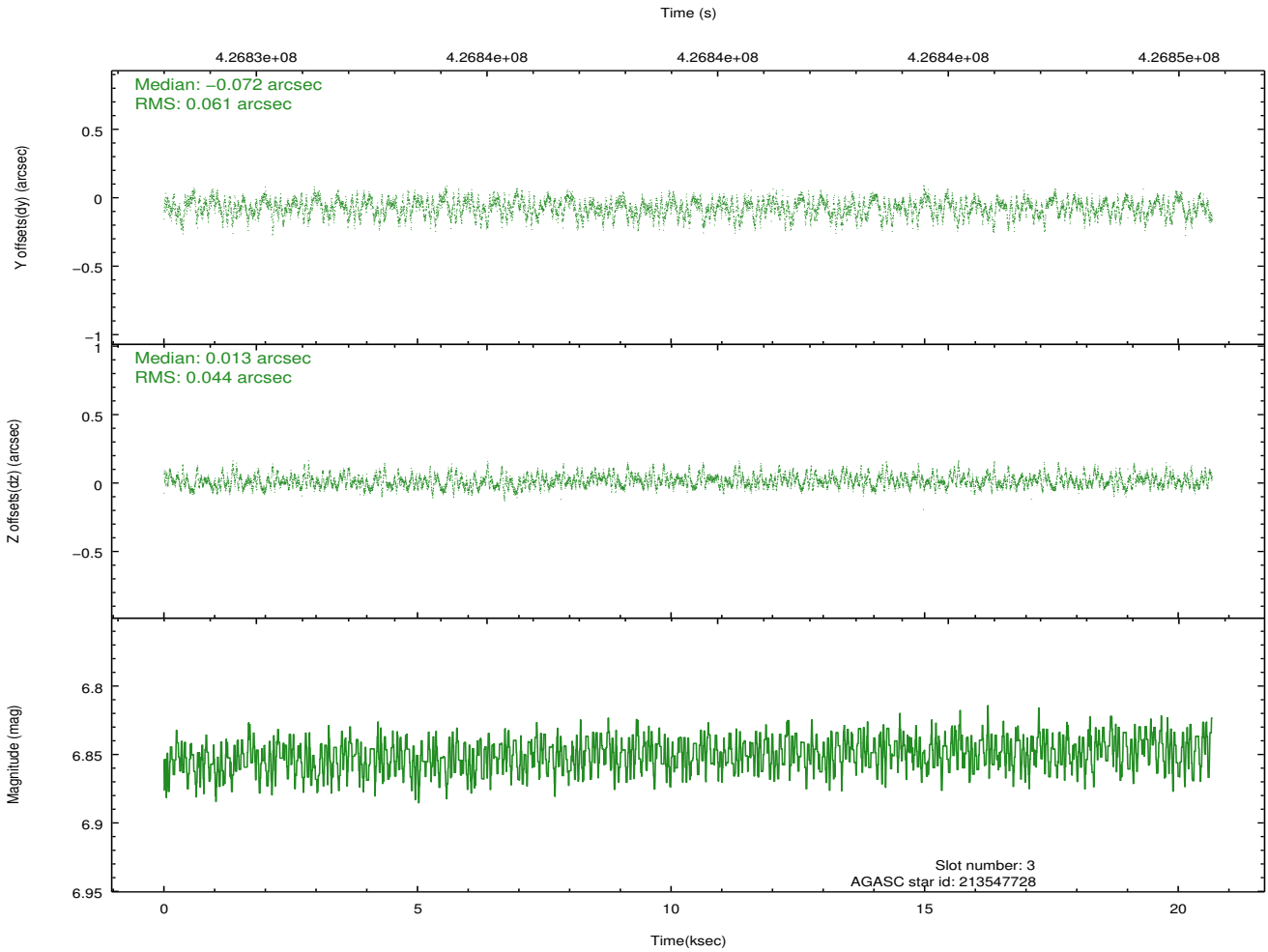
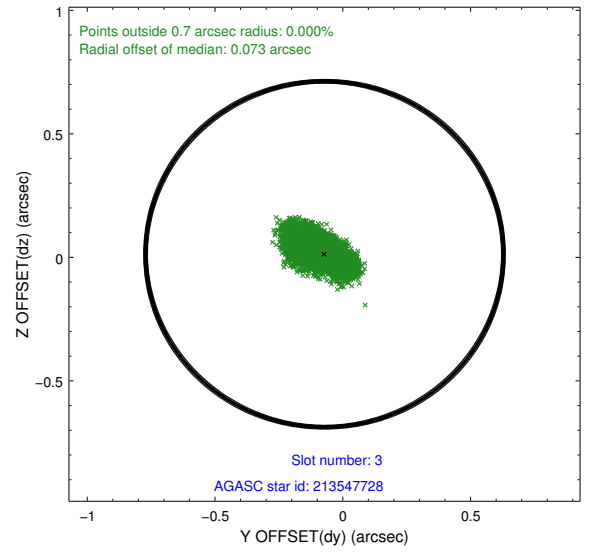
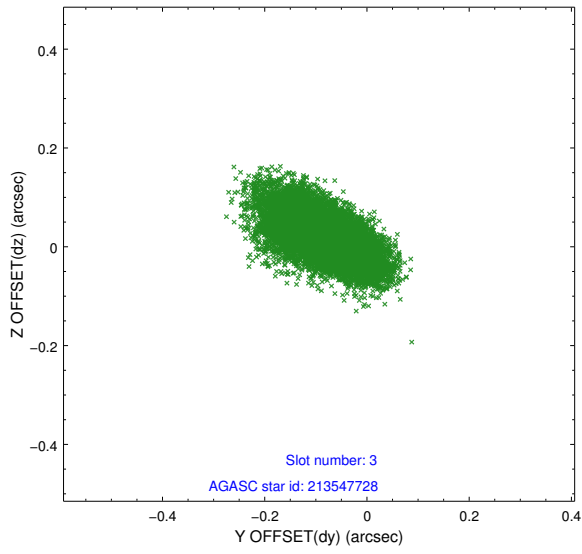


Slot Statistics

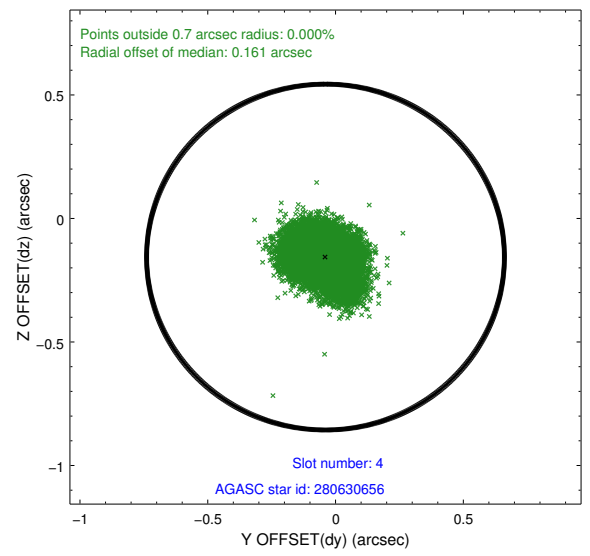
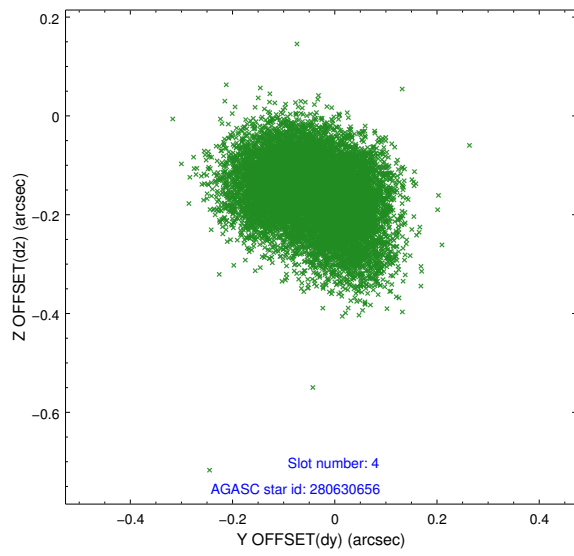
slot	status	id	mag	n_pts	med_dy	med_dz	dr1	dr2	ra	dec	mean_y	mean_z
0	FID	ACIS-S-2	6.93	5041	-0.121	-0.036	0.008	0.013	0.000000	0.000000	-771.02	-1737.56
1	FID	ACIS-S-4	7.00	5041	0.314	0.069	0.012	0.024	0.000000	0.000000	2142.61	170.83
2	FID	ACIS-S-5	7.04	5041	-0.223	-0.023	0.015	0.027	0.000000	0.000000	-1823.73	164.63
3	GUIDE	213547728	6.85	10082	-0.072	0.013	0.079	0.135	300.592091	22.151462	-1687.64	1720.48
4	GUIDE	280630656	9.01	10077	-0.039	-0.156	0.114	0.176	300.025585	22.704884	573.12	168.93
5	GUIDE	280633064	8.25	10077	0.063	-0.032	0.096	0.171	299.694491	23.488361	2231.24	-2363.73
6	GUIDE	280632480	7.98	10080	-0.005	0.101	0.084	0.135	300.237301	22.846979	-5.99	-478.63
7	GUIDE	280640784	9.09	10075	0.059	0.073	0.099	0.155	300.454026	22.565622	-922.87	360.31

2.4 Star Slots

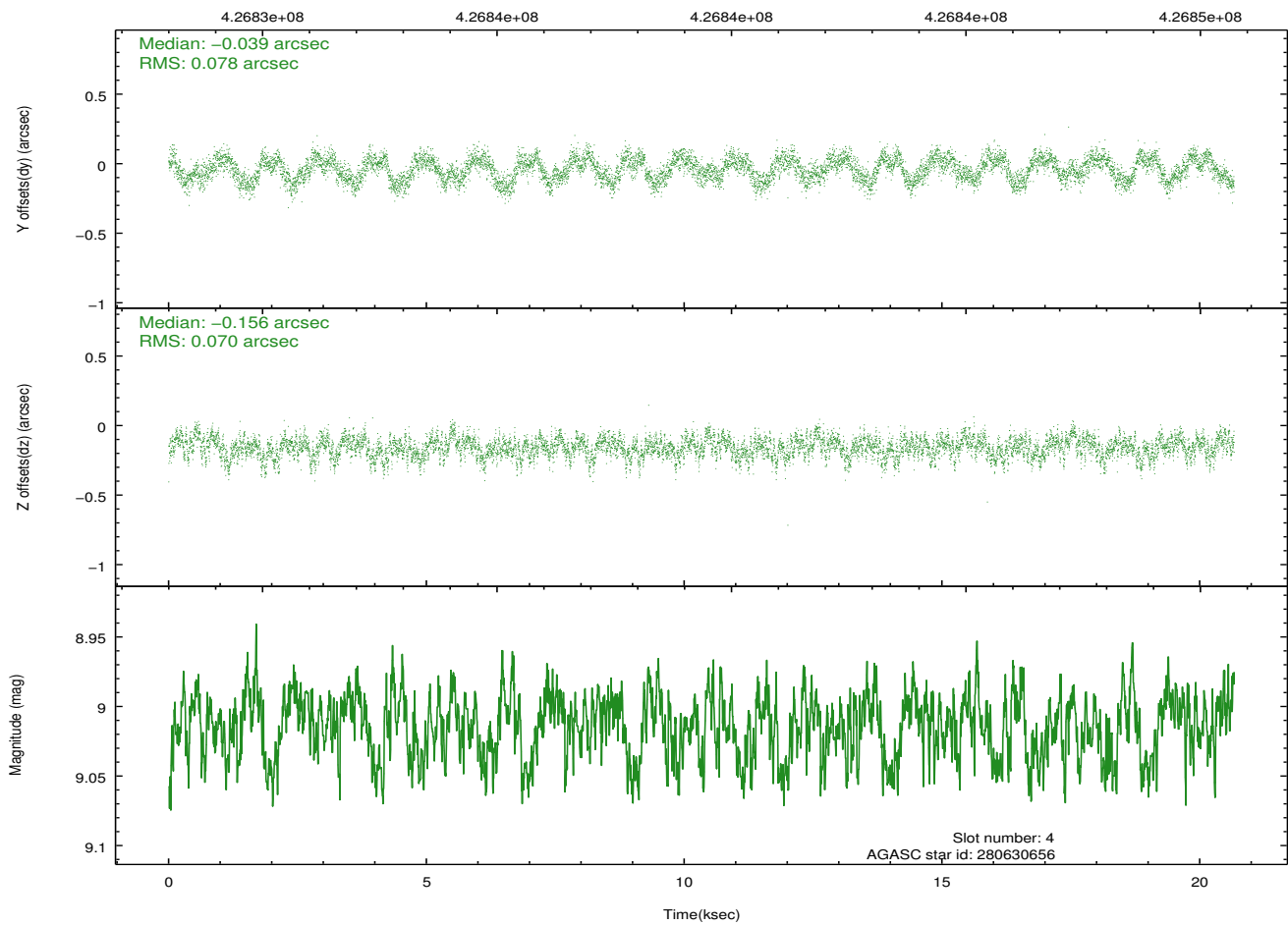
2.4.1 Slot 3



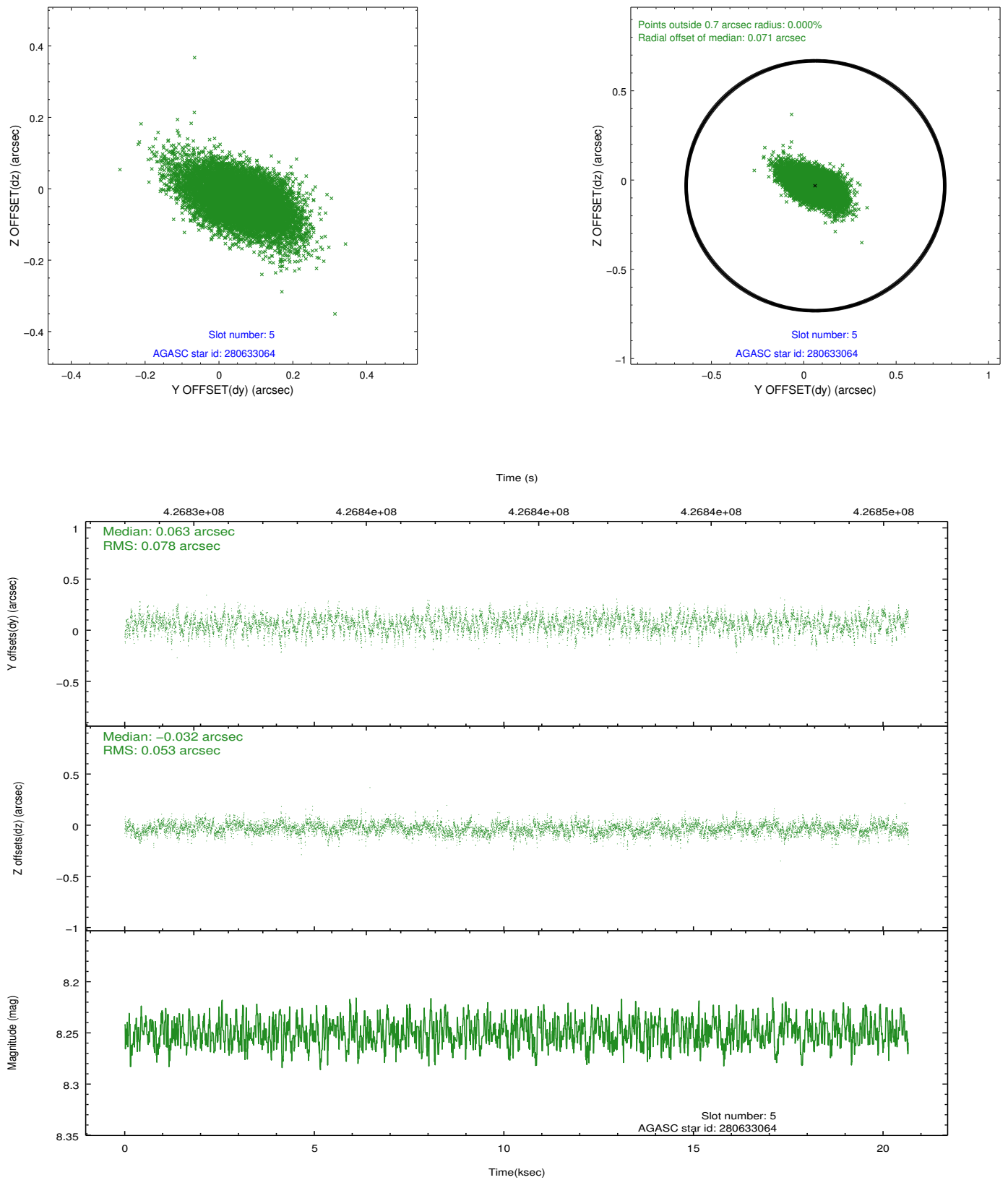
2.4.2 Slot 4



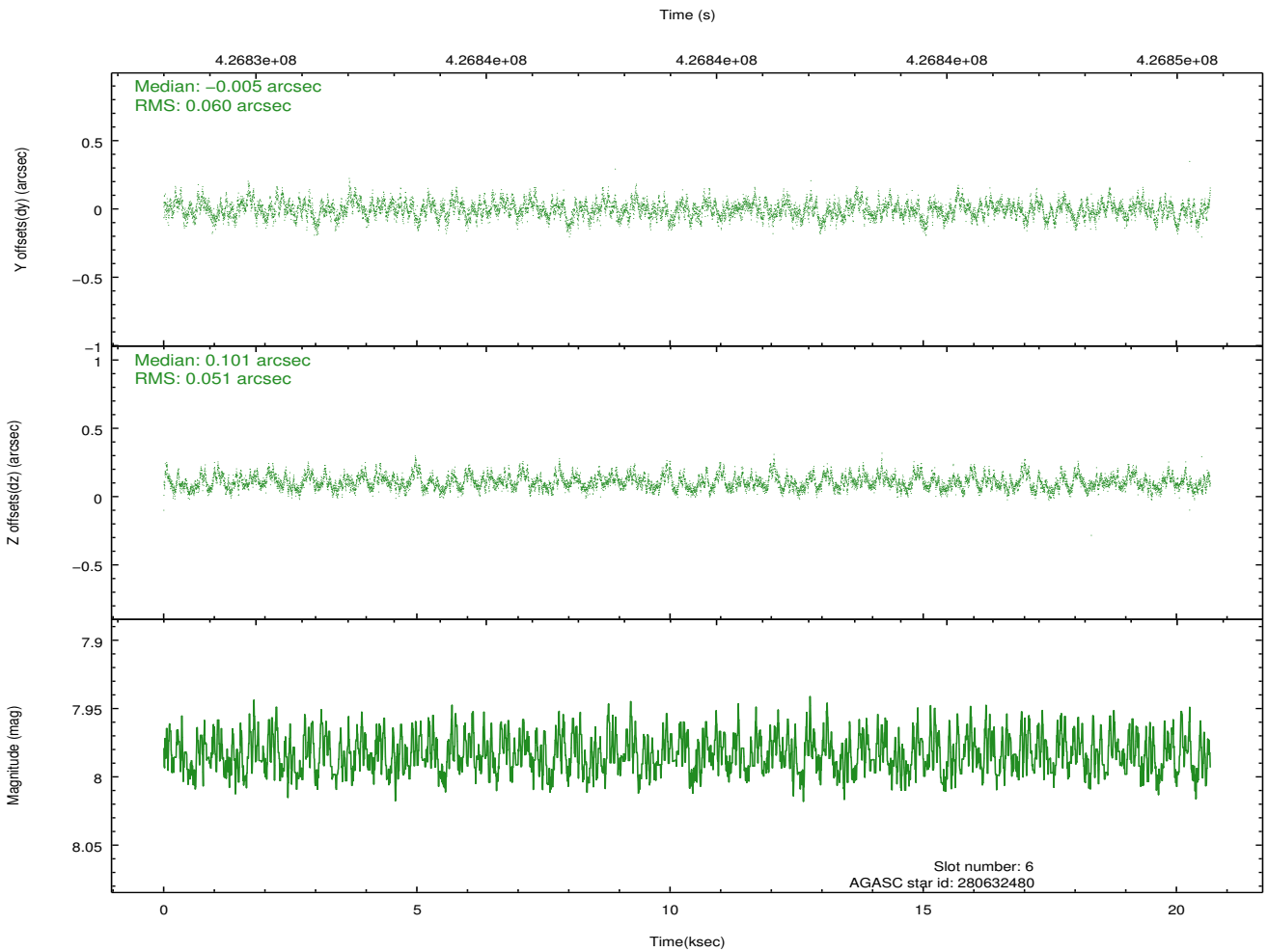
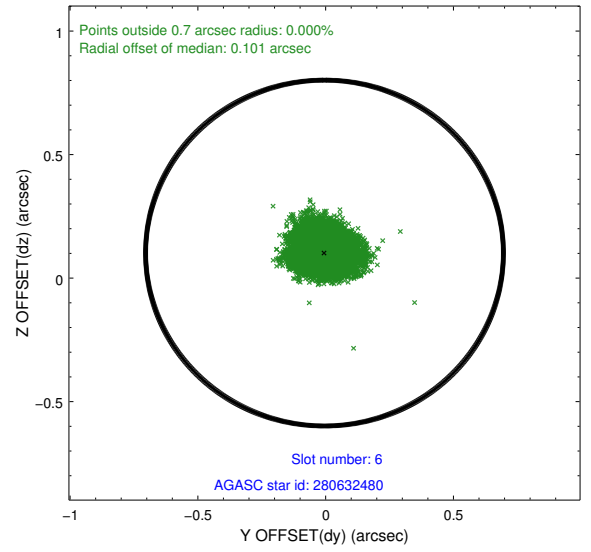
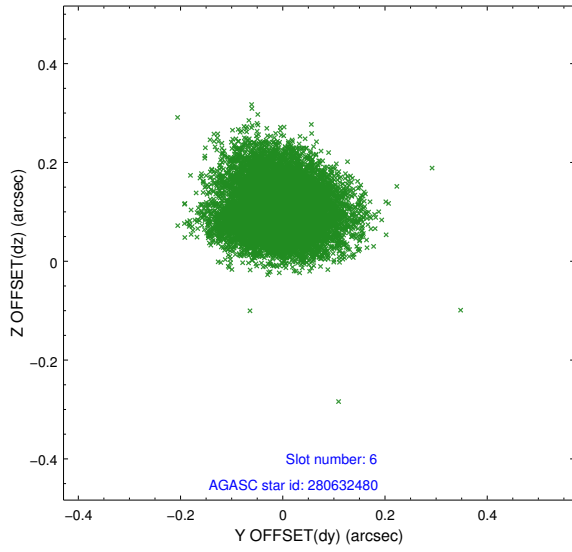
Time (s)



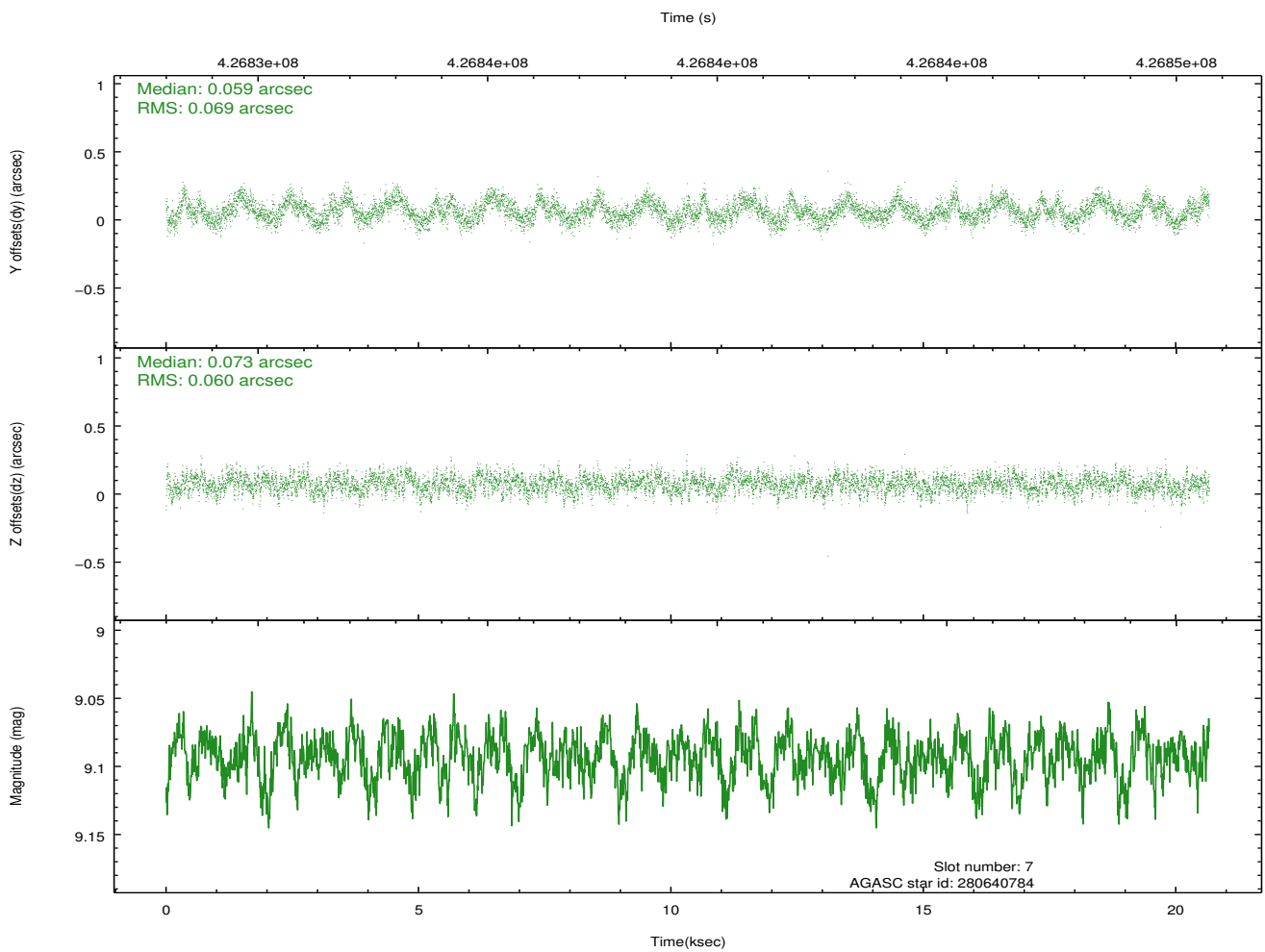
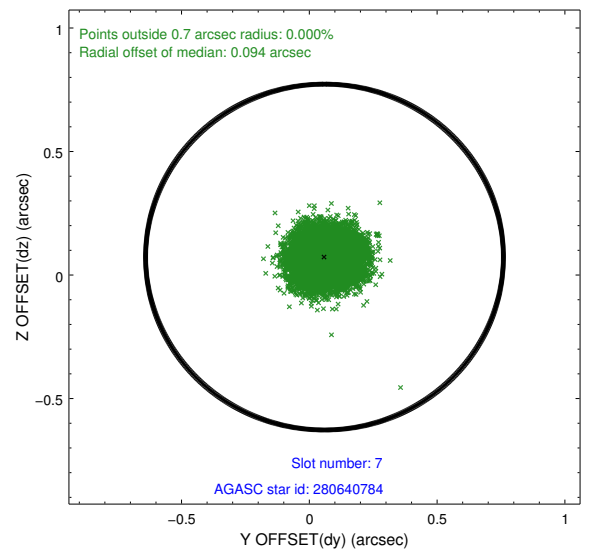
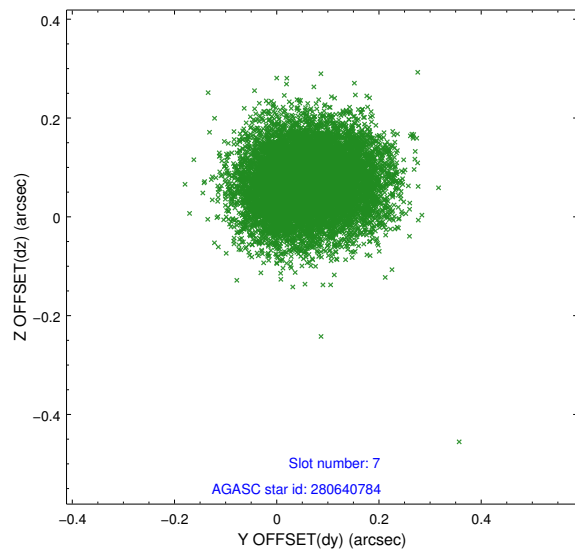
2.4.3 Slot 5



2.4.4 Slot 6

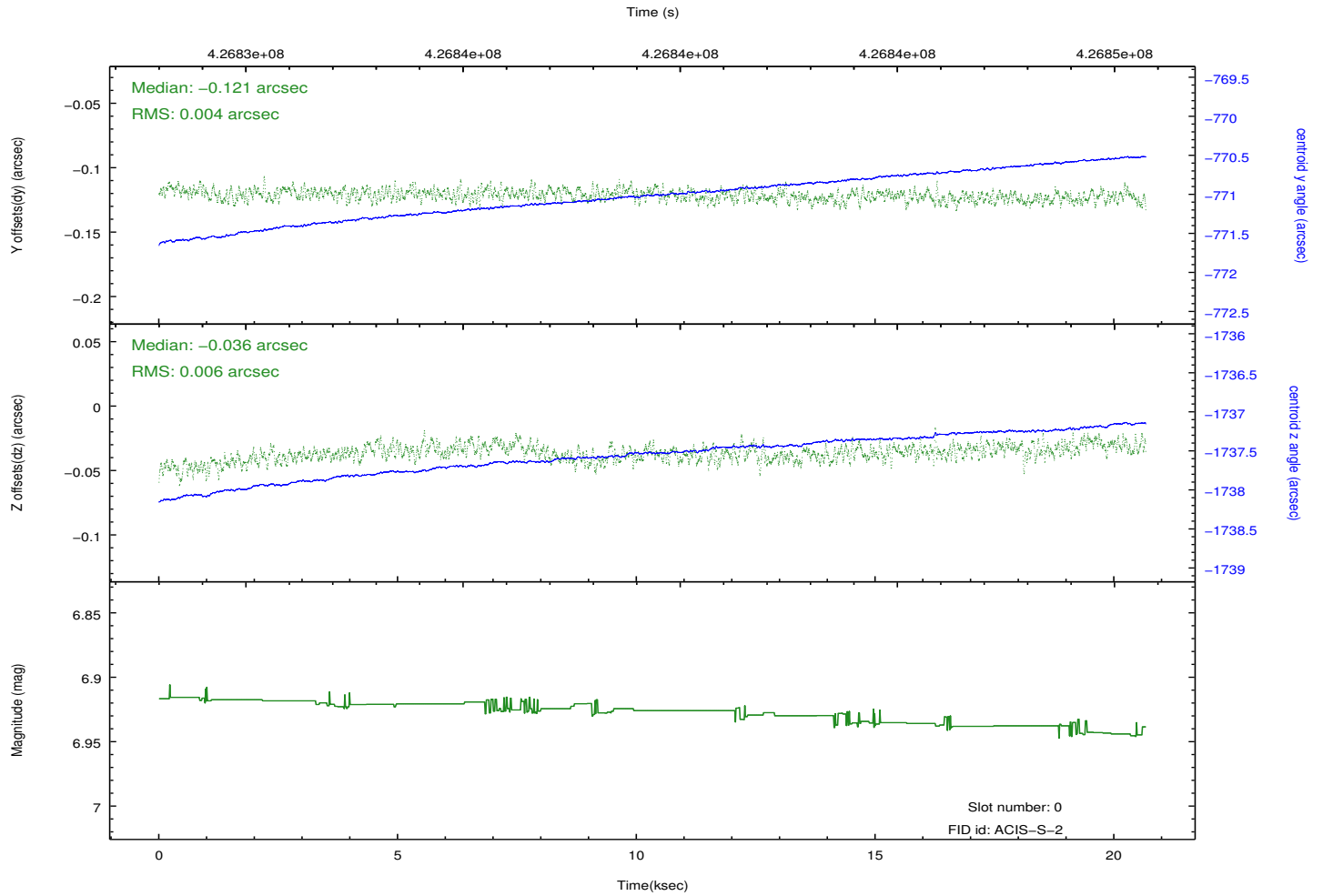
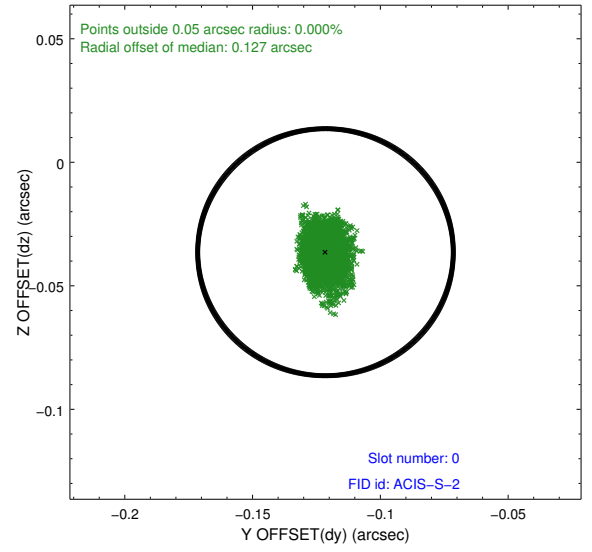
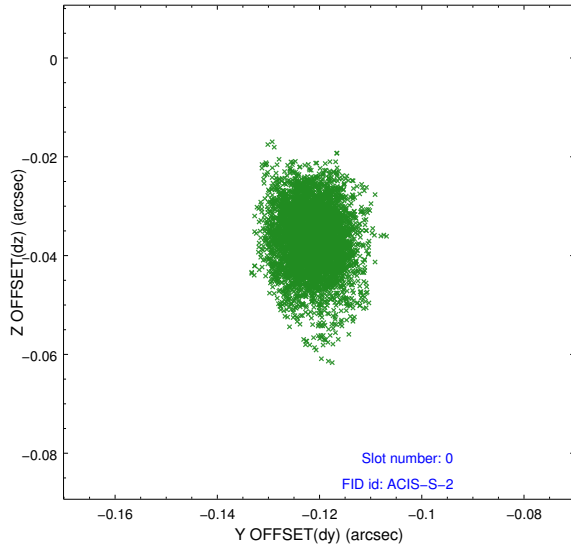


2.4.5 Slot 7

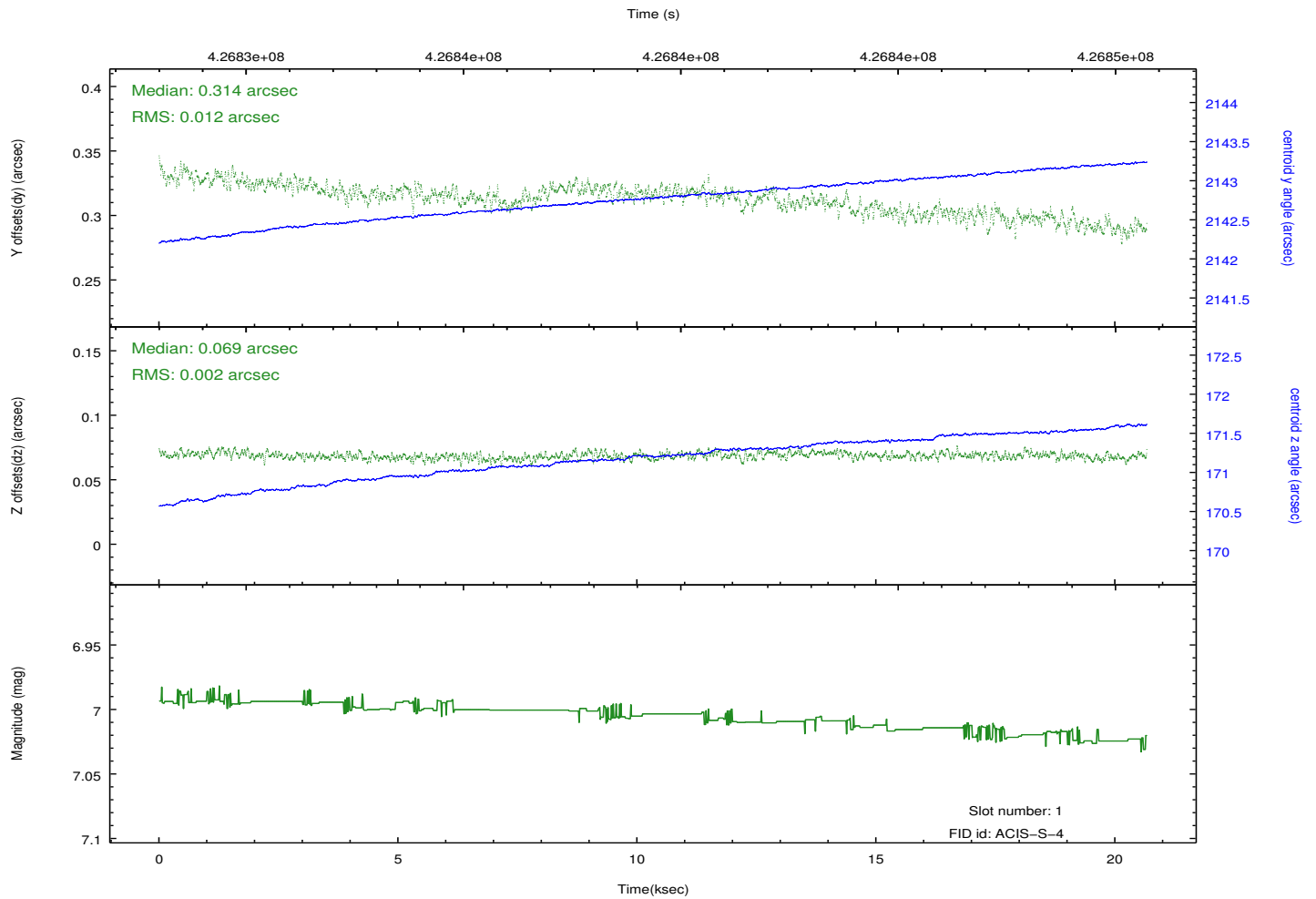
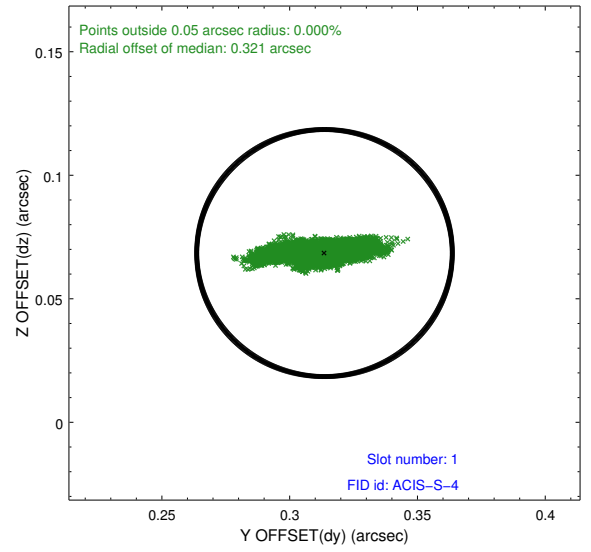
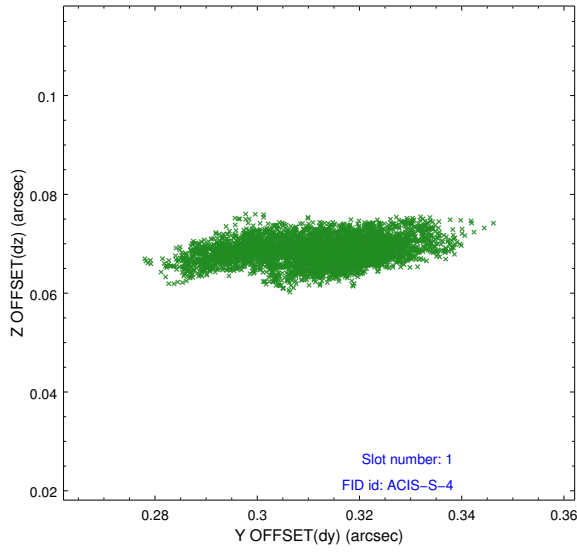


2.5 FID Slots

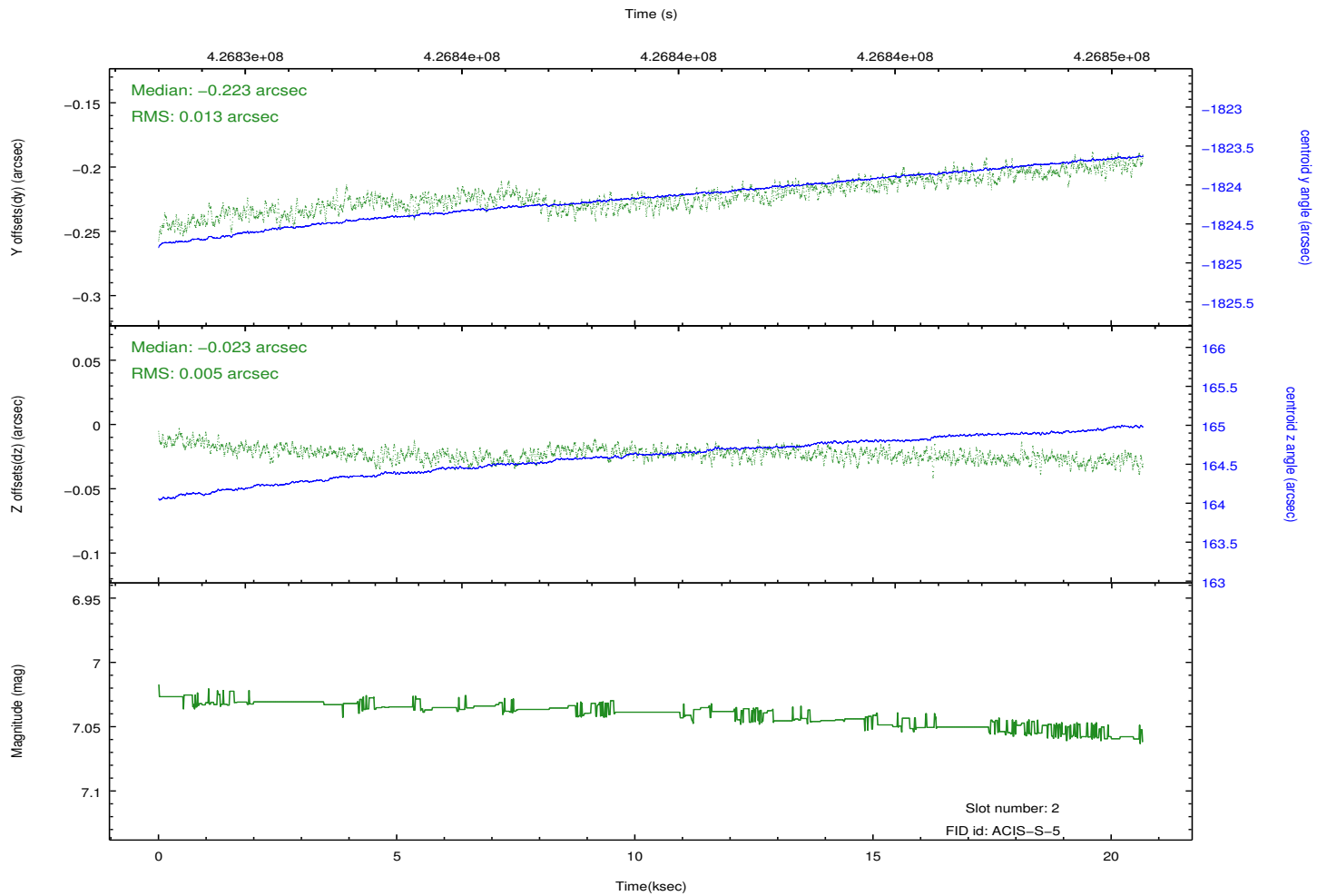
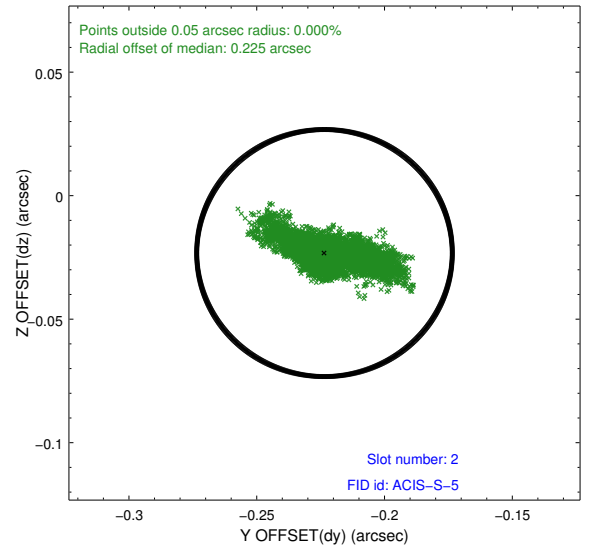
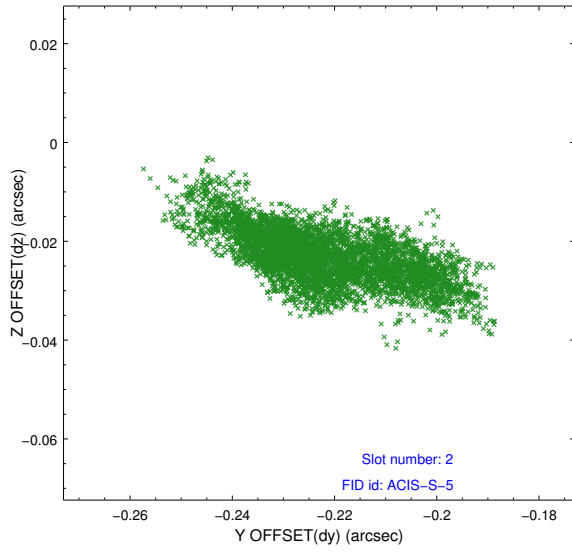
2.5.1 Slot 0



2.5.2 Slot 1



2.5.3 Slot 2



A Summary

A.1 Status

V&V Scientist	Jen Lauer
V&V Date (YYYY-MM-DD)	2012.03.20
V&V Edition	1
V&V Disposition and Status	OK
V&V Charge Time	20.050606199384

A.2 Comments