

V&V Reference Report

L2 ASCDS Version : 8.4.3

Observation 12883 - L2 Version 1
Chandra X-Ray Center

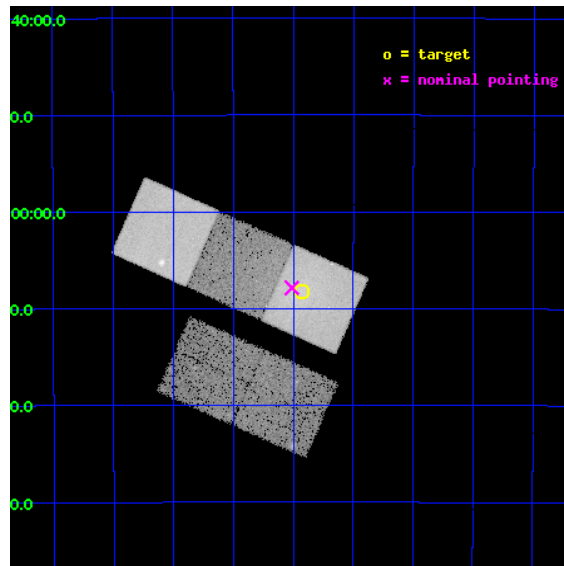
L2 Processing Date : Apr 2 2012

Contents

1	Front	2
2	OBI	3
2.1	OBI	3
2.1.1	Images	3
2.1.2	Bias	3
2.1.3	Parameters	4
2.1.4	Events	4
2.2	Compared Parameters	5
2.3	Aspect	6
2.4	Star Slots	9
2.4.1	Slot 3	9
2.4.2	Slot 4	10
2.4.3	Slot 5	11
2.4.4	Slot 6	12
2.4.5	Slot 7	13
2.5	FID Slots	14
2.5.1	Slot 0	14
2.5.2	Slot 1	15
2.5.3	Slot 2	16
A	Summary	17
A.1	Status	17
A.2	Comments	17

1 Front

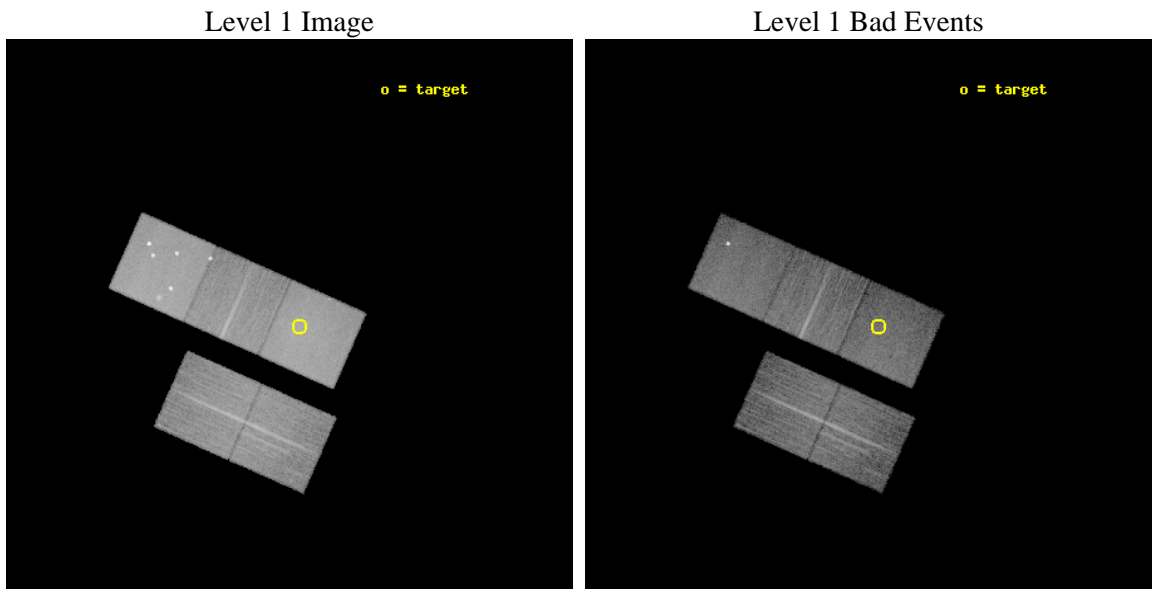
seq_num	801022	Sequence number
obs_id	12883	Observation id
title	Zooming in Abell 3560: a non-cool core cluster with a bright radio-loud BCG	Proposal title
observer	Dr Mariachiara Rossetti	Principal investigator
object	Abell 3560	Source name
dtycycle	0	
cycle	P	events from which exps? Prim/Second/Both
ra_targ	203.107083	Observer's specified target RA [deg]
dec_targ	-33.136833	Observer's specified target Dec [deg]
ra_nom	203.12786726665	Nominal RA [deg]
dec_nom	-33.13094420878	Nominal Dec [deg]
roll_nom	23.932585860614	Nominal Roll [deg]
revision	1	Processing version of data
ontime	20066.300154328	Sum of GTIs [s]
livetime	19804.119170217	Livetime [s]
ontime2	20066.300154328	Sum of GTIs [s]
ontime3	20066.300154328	Sum of GTIs [s]
ontime5	20066.300154328	Sum of GTIs [s]
ontime6	20066.300154328	Sum of GTIs [s]
ontime7	20066.300154328	Sum of GTIs [s]
l2events	213430	Number of level 2 events



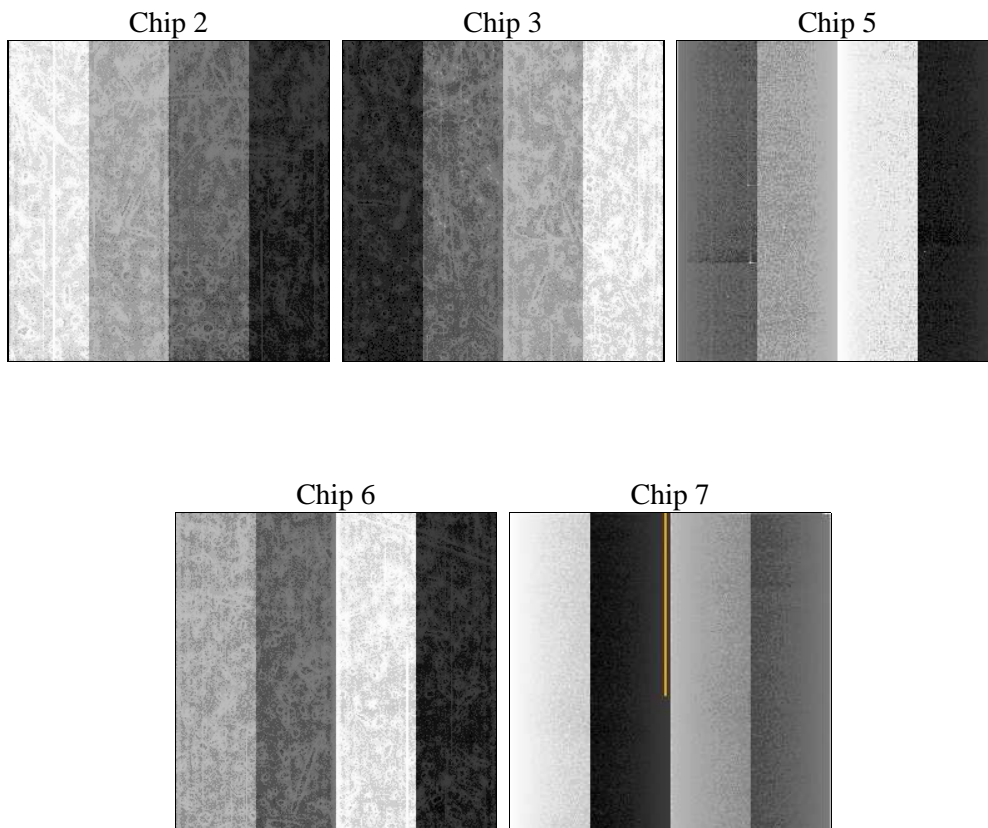
2 OBI

2.1 OBI

2.1.1 Images



2.1.2 Bias



2.1.3 Parameters

obi_num	1	Obi number	sched_exp_time	20000.000000	[s] Scheduled observation exposure time
ascdsver	8.4.3	Processing system revision	ontime	20066.300154328	Sum of GTIs [s]
caldbver	4.4.9	 	ontime2	20066.300154328	Sum of GTIs [s]
date	2012-04-02T15:55:29	Date and time of file creation	ontime3	20066.300154328	Sum of GTIs [s]
revision	1	Processing version of data	ontime5	20066.300154328	Sum of GTIs [s]
			ontime6	20066.300154328	Sum of GTIs [s]
			ontime7	20066.300154328	Sum of GTIs [s]
			l1events	719651	Number of level 1 events

2.1.4 Events

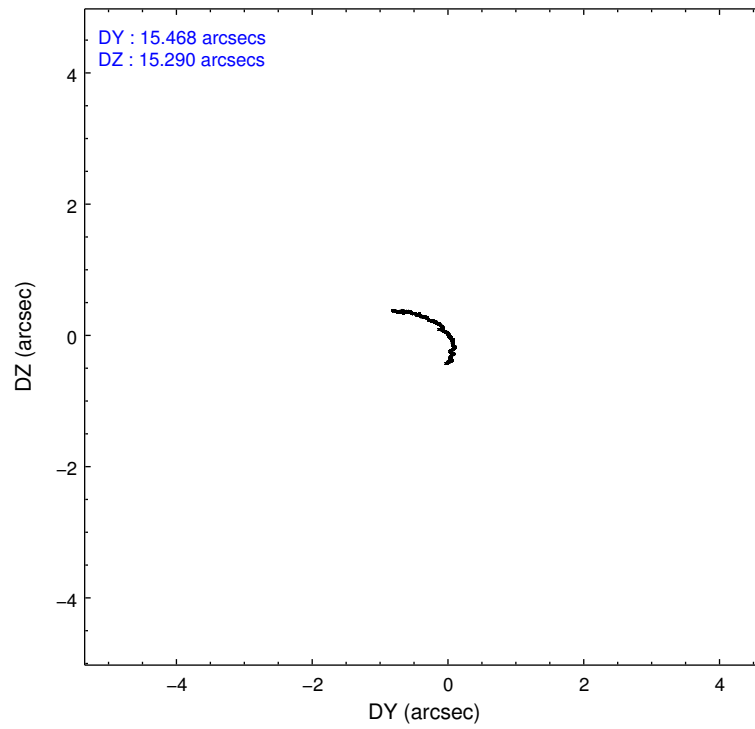
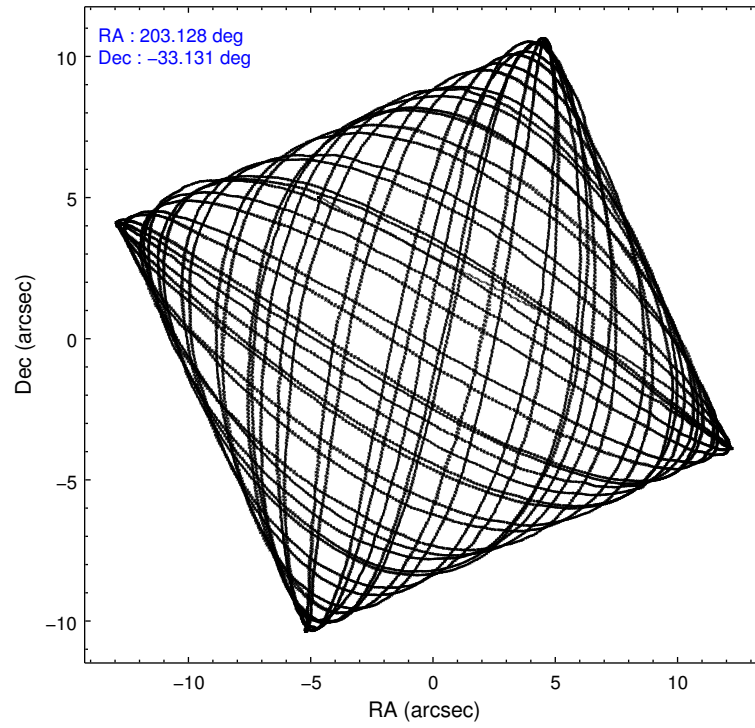
	ccd 2	ccd 3	ccd 5	ccd 6	ccd 7
level 1 events	112084	109114	203523	122413	172517
rejected events	98548	96123	98861	103114	85546
rejected %	87%	88%	48%	84%	49%

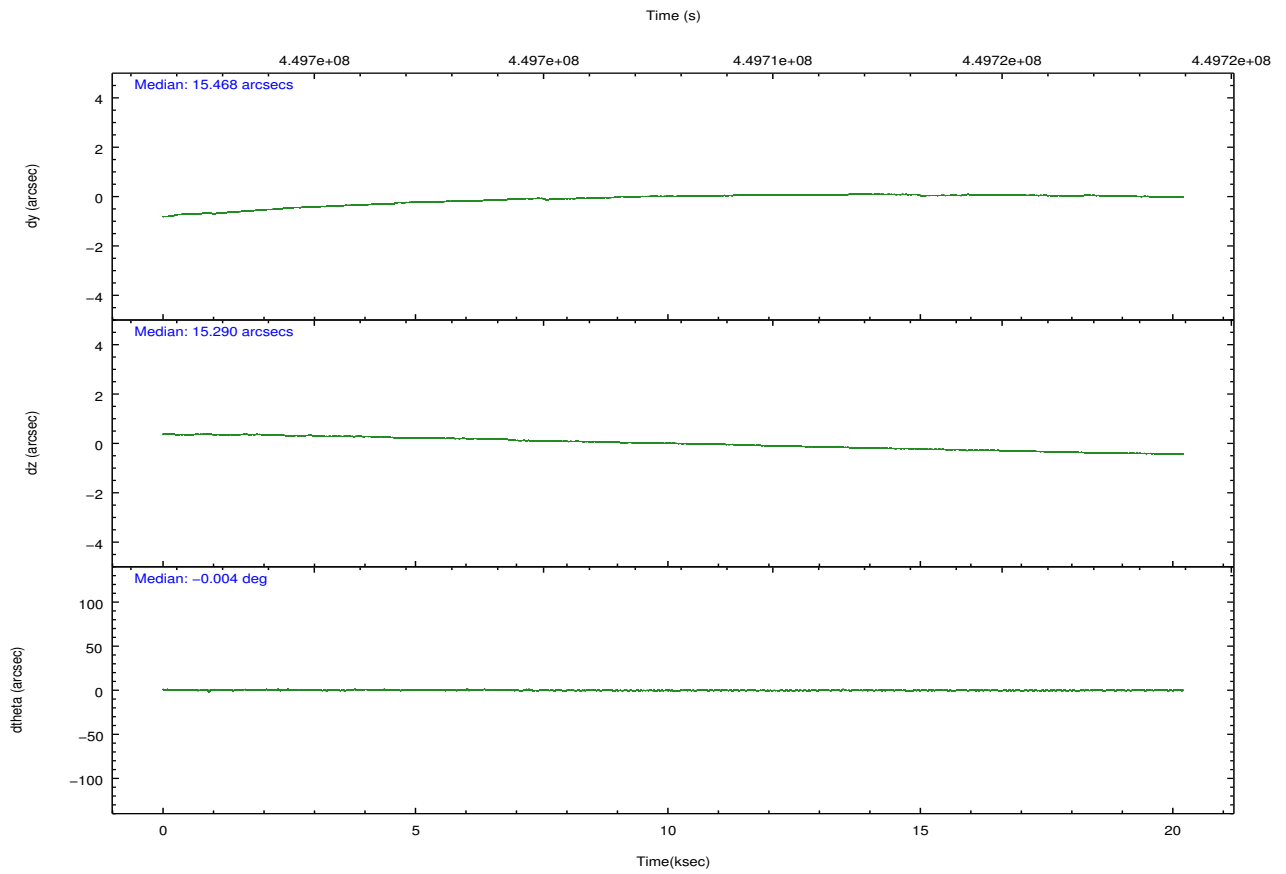
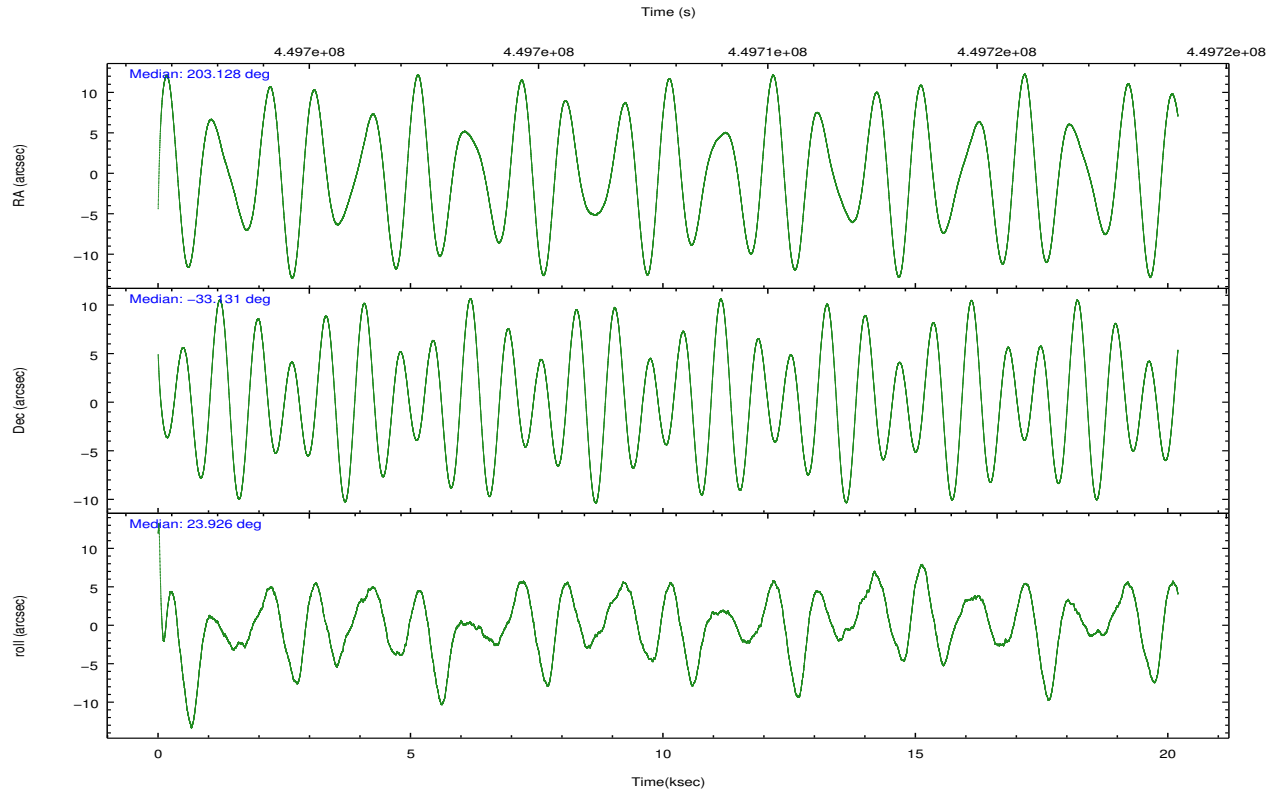
	ccd 2	ccd 3	ccd 5	ccd 6	ccd 7
grade 0 events	5092	5010	18171	9407	11834
	4%	4%	8%	7%	6%
grade 1 events	52	67	355	77	188
	0%	0%	0%	0%	0%
grade 2 events	3207	2775	30397	3636	18968
	2%	2%	14%	2%	10%
grade 3 events	1293	1351	3749	1560	8021
	1%	1%	1%	1%	4%
grade 4 events	1379	1333	3387	1536	8079
	1%	1%	1%	1%	4%
grade 5 events	4952	5619	15015	5807	16059
	4%	5%	7%	4%	9%
grade 6 events	2568	2525	48975	3161	40075
	2%	2%	24%	2%	23%
grade 7 events	93541	90434	83474	97229	69293
	83%	82%	41%	79%	40%

2.2 Compared Parameters

Parameter	Planned	Actual	Parameter	Planned	Actual
Instrument	ACIS	ACIS	Obspar format version number	7	7
Detector	ACIS-23567	ACIS-23567	Obspar file type	PREDICTED	ACTUAL
Grating	NONE	NONE	Obspar update status	NONE	UPDATED
Data mode	VFAINT	VFAINT	Number of optional ACIS chips dropped	0	0
Observation mode	POINTING	POINTING	On-chip summing requested	N	N
[deg] Pointing RA	203.108979	203.1278672666538	Subarray requested	NONE	NONE
[deg] Pointing Dec	-33.153259	-33.1309442087805	Alternating exposures requested	N	N
[deg] Pointing Roll	23.765619	23.93258586061411	[s] Primary exposure time	0.000000	3.1
[mm] SIM focus pos	-0.684267	-0.6828225247311905			
[mm] SIM defocus	0	0.001444936568705701			
[mm] SIM translation stage pos	-190.132523	-190.1400660498719			
[mm] SIM translation stage offset	0	0.00754346686406393			
[s] Observation start time (MET)	449697928.184000	449696819.6158			
Observation start date	2012-04-01T20:04:22	2012-04-01T19:46:59			
[s] Observation end time (MET)	449717928.184000	449719226.62949			
Observation end date	2012-04-02T01:37:42	2012-04-02T02:00:26			
Read mode	TIMED	TIMED			

2.3 Aspect



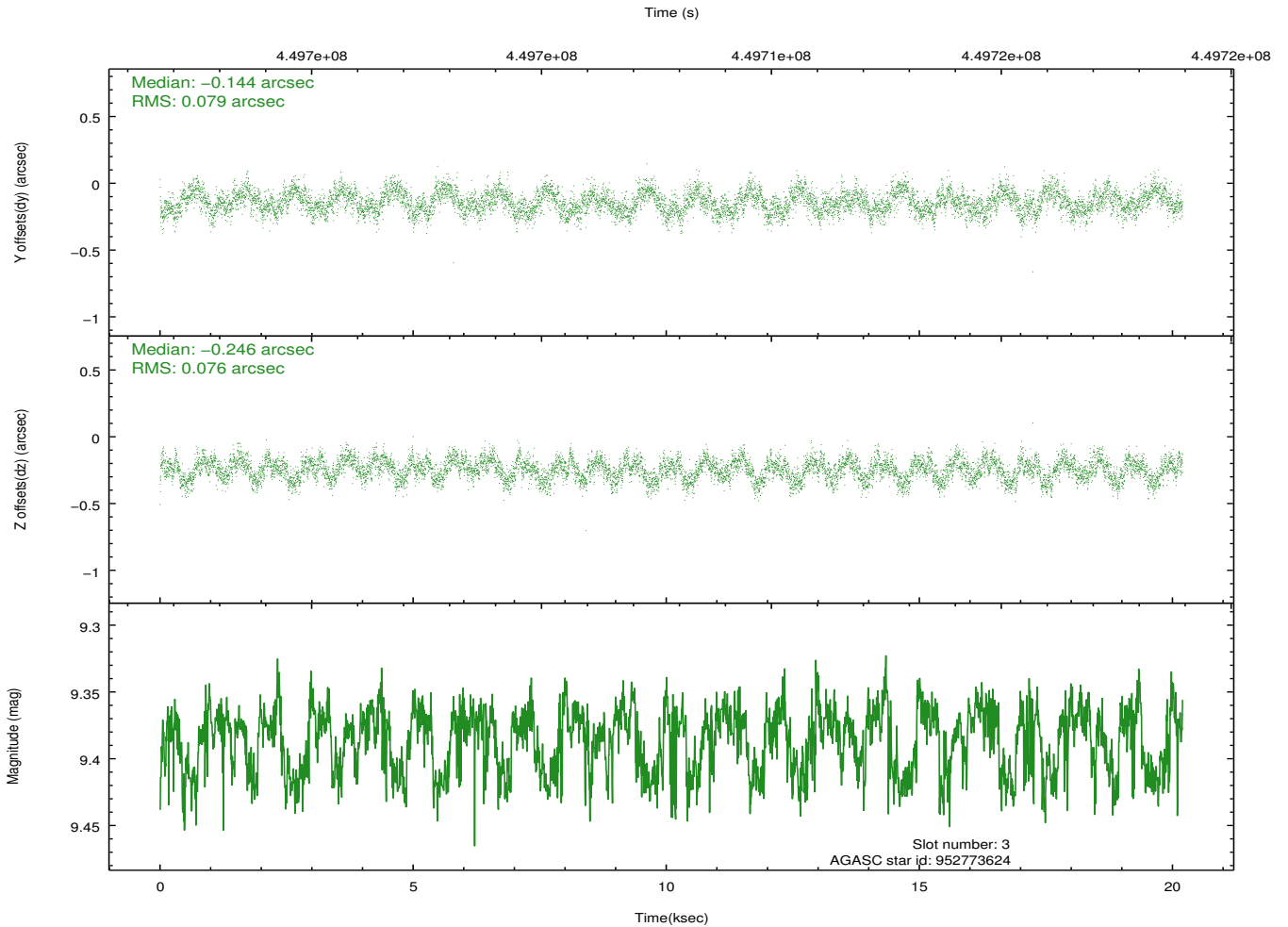
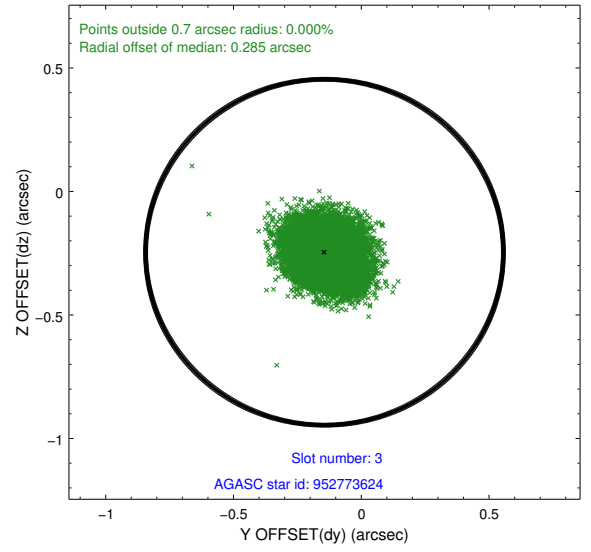
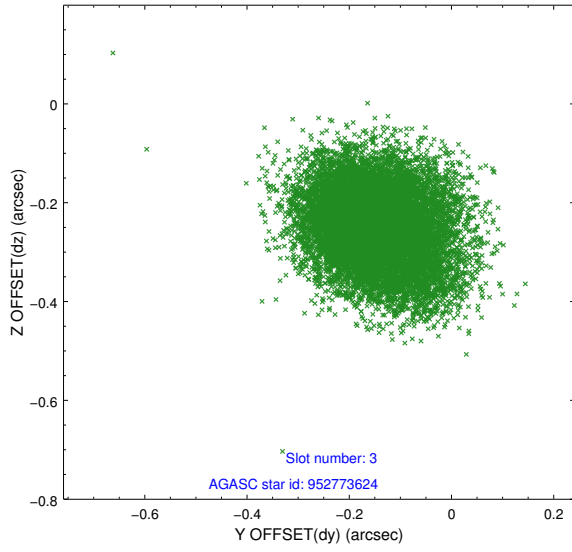


Slot Statistics

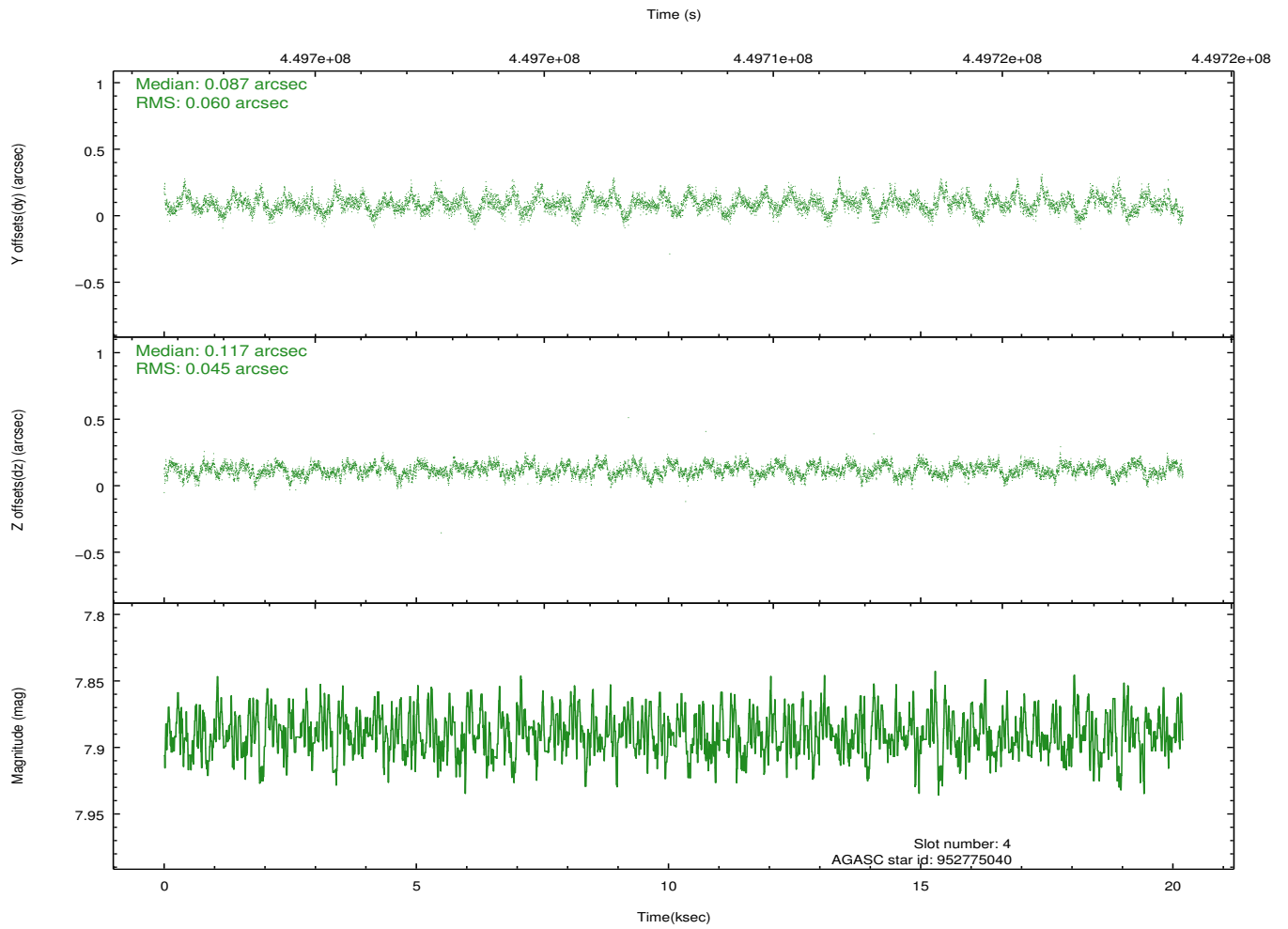
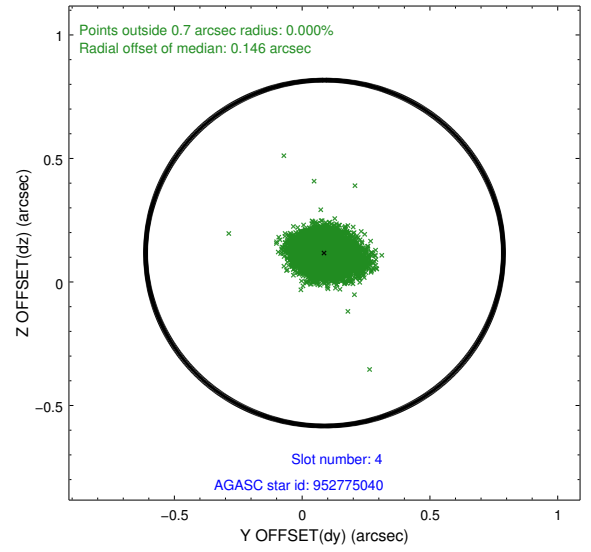
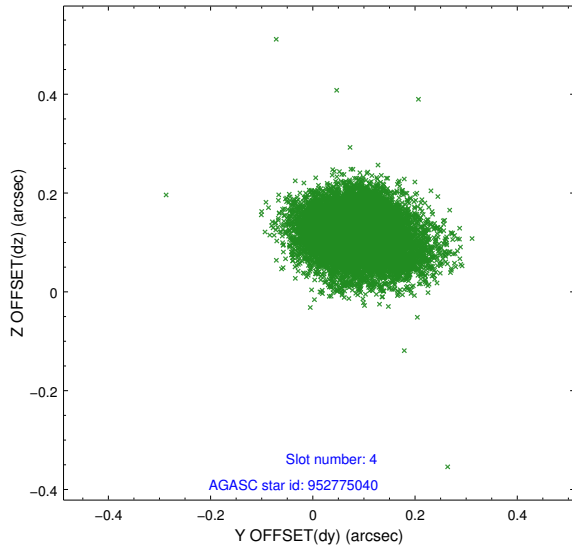
slot	status	id	mag	n_pts	med_dy	med_dz	dr1	dr2	ra	dec	mean_y	mean_z
0	FID	ACIS-S-2	6.92	4927	-0.123	-0.003	0.010	0.018	0.000000	0.000000	-768.45	-1736.67
1	FID	ACIS-S-4	7.00	4926	0.225	0.060	0.009	0.015	0.000000	0.000000	2145.09	171.68
2	FID	ACIS-S-5	7.03	4926	-0.132	-0.047	0.013	0.029	0.000000	0.000000	-1821.07	165.46
3	GUIDE	952773624	9.38	9845	-0.144	-0.246	0.118	0.184	203.655177	-32.921268	1845.33	95.25
4	GUIDE	952775040	7.89	9847	0.087	0.117	0.079	0.128	203.061868	-33.248903	-267.97	-257.77
5	GUIDE	952779024	8.45	9849	-0.016	-0.000	0.151	0.234	204.034661	-33.479119	2066.70	-2204.76
6	GUIDE	953289552	9.60	9849	0.255	0.158	0.178	0.279	202.943634	-33.779305	-1360.30	-1863.75
7	GUIDE	952775504	9.73	9826	-0.184	-0.037	0.159	0.254	202.832434	-32.973853	-504.66	926.51

2.4 Star Slots

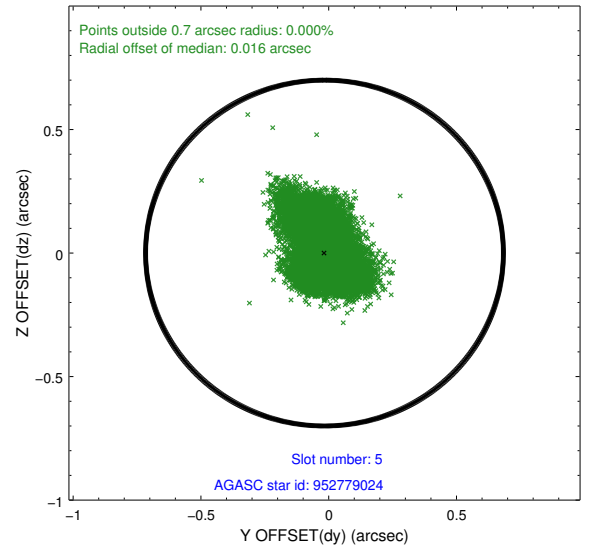
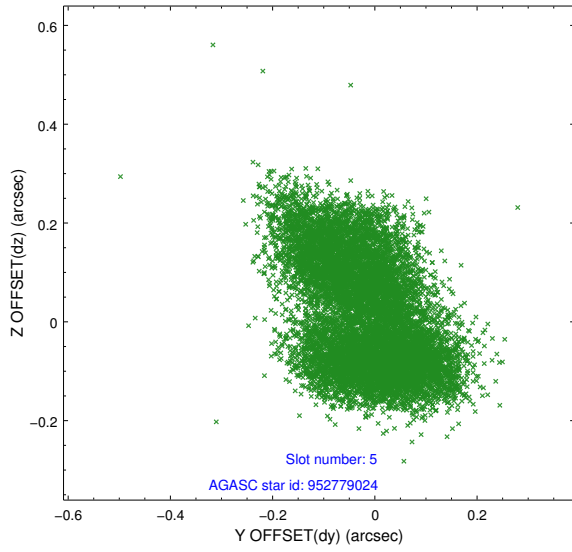
2.4.1 Slot 3



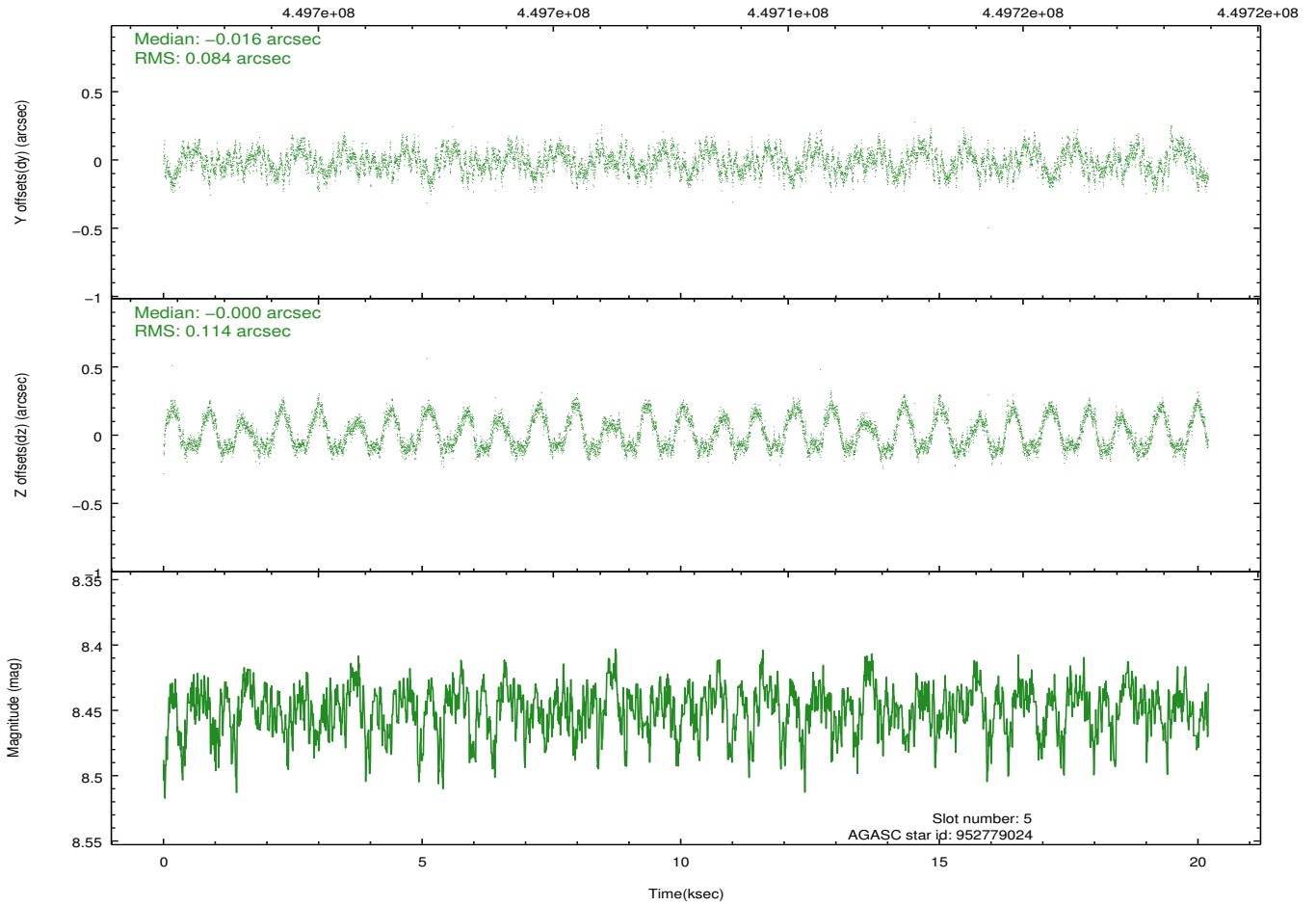
2.4.2 Slot 4



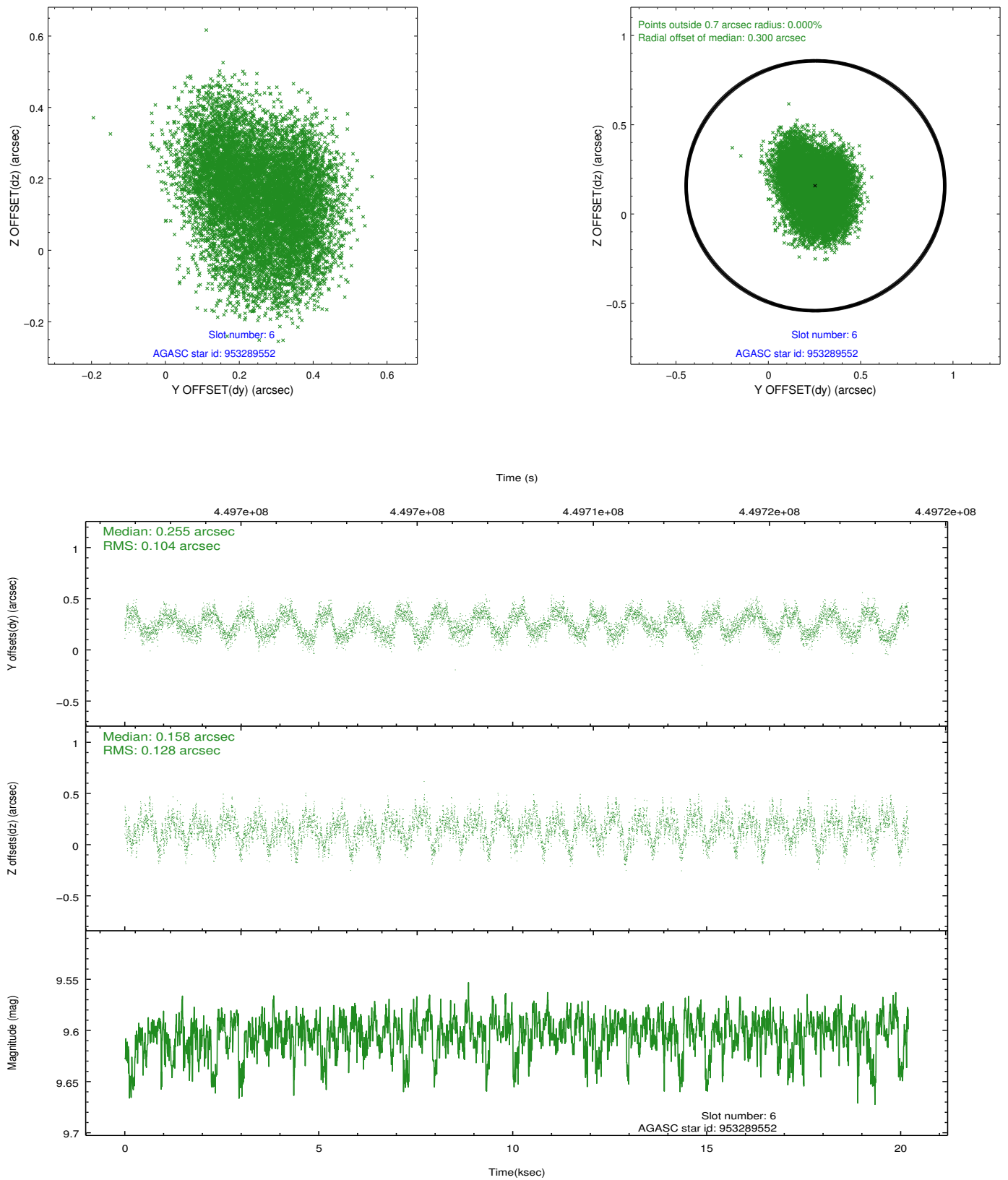
2.4.3 Slot 5



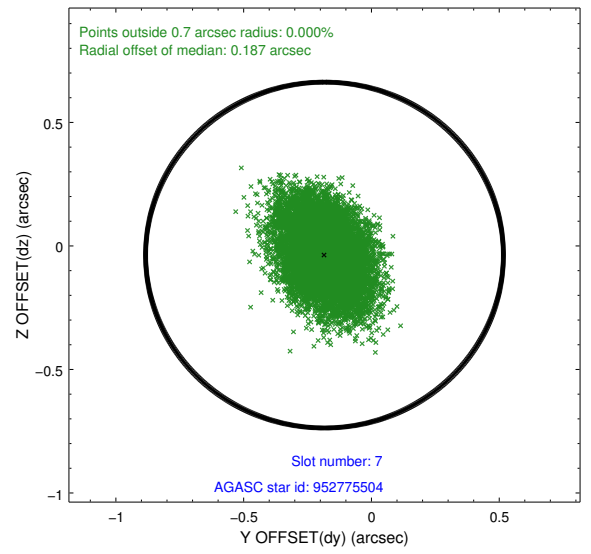
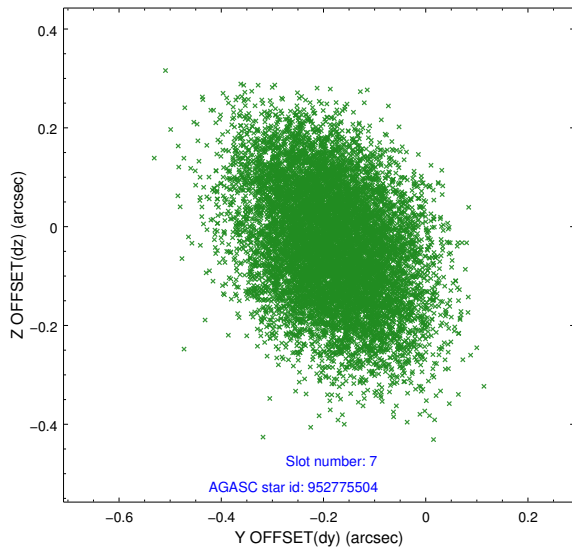
Time (s)



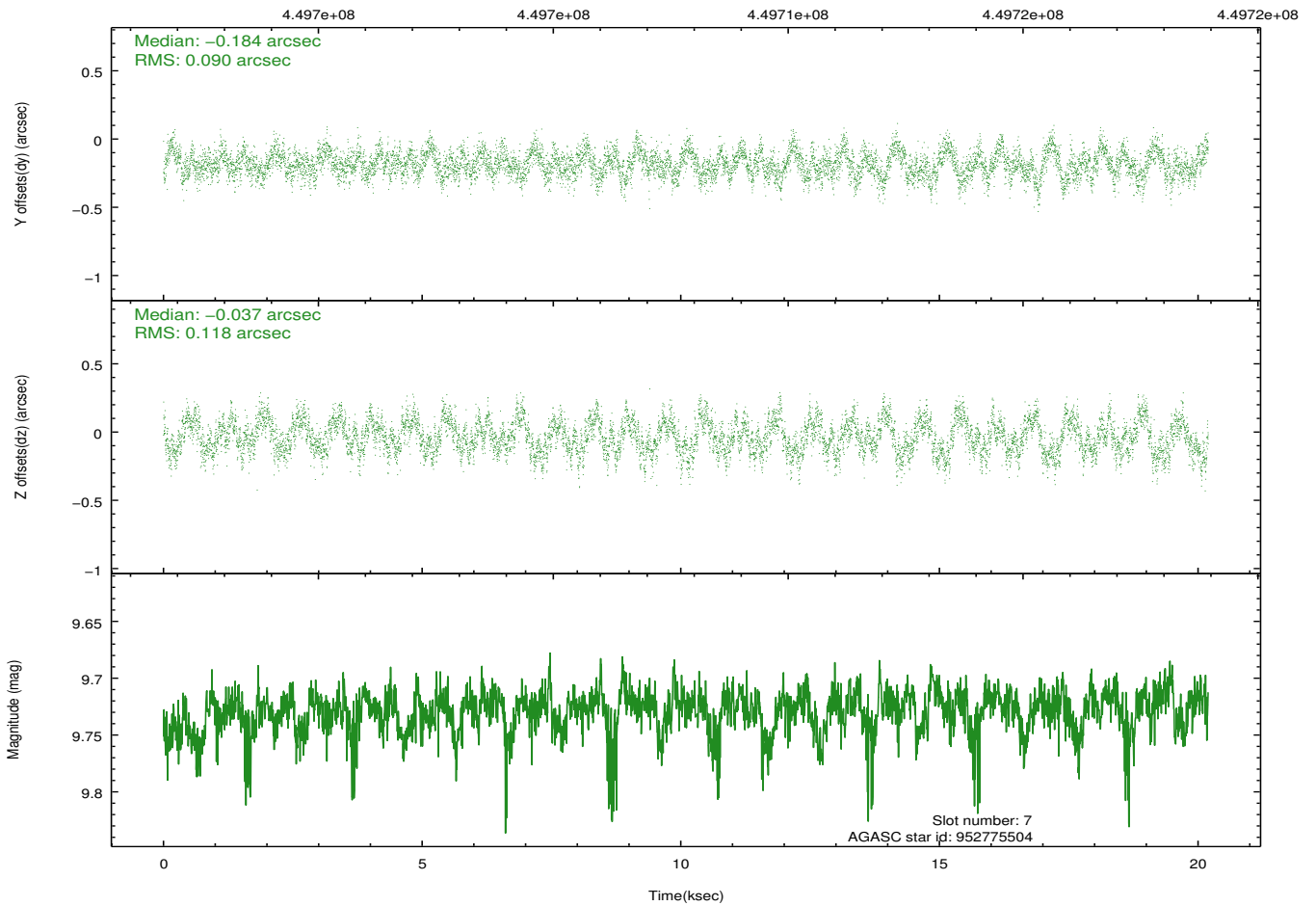
2.4.4 Slot 6



2.4.5 Slot 7

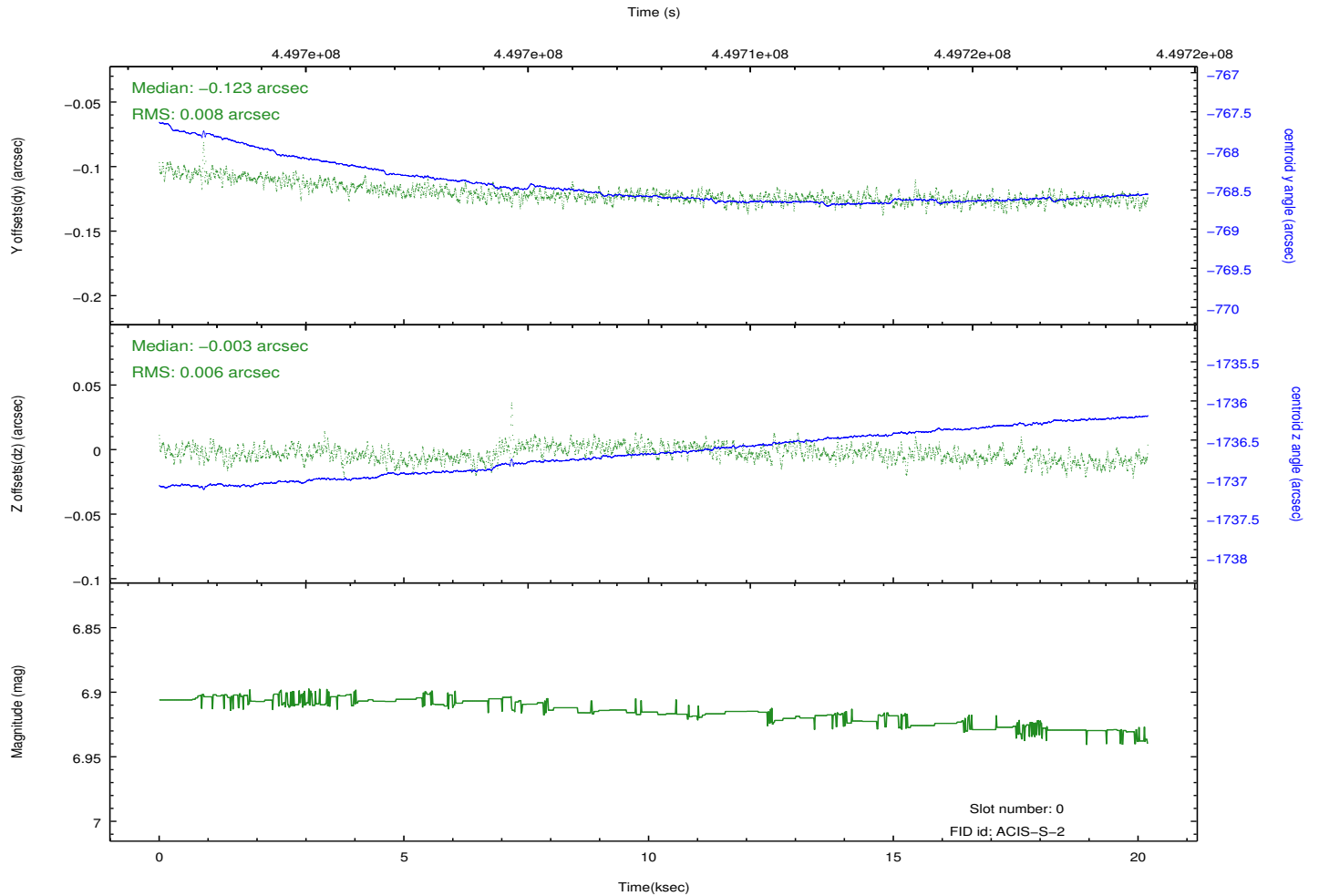
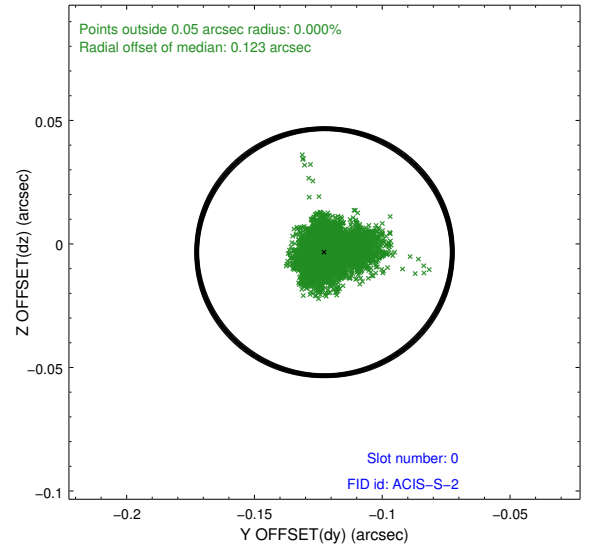
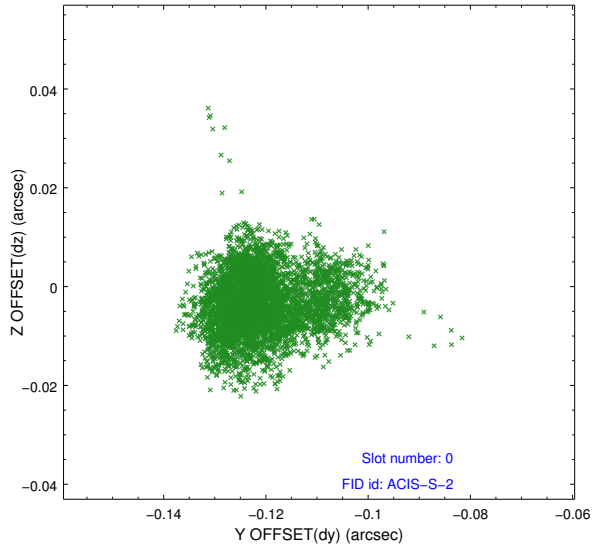


Time (s)

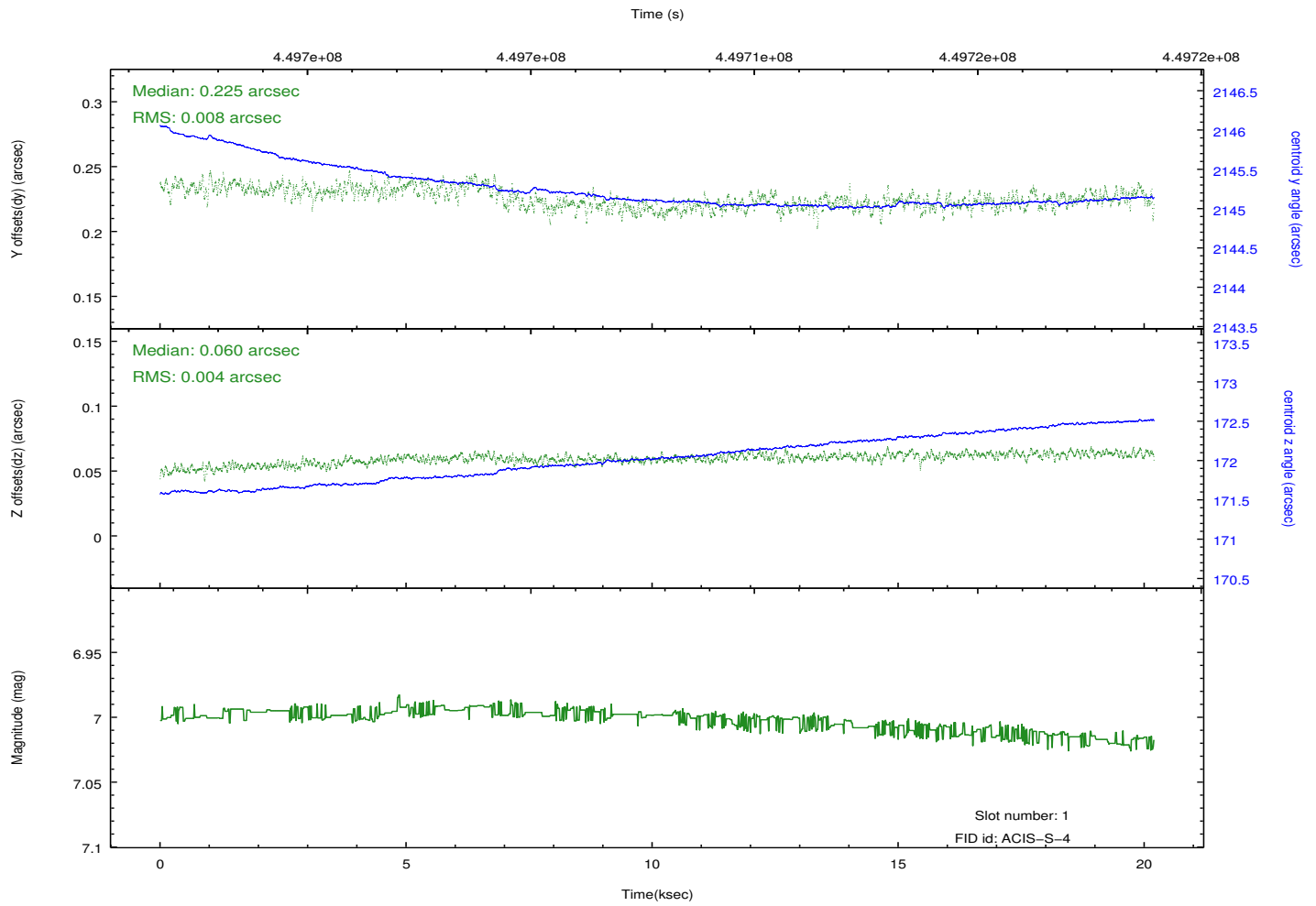
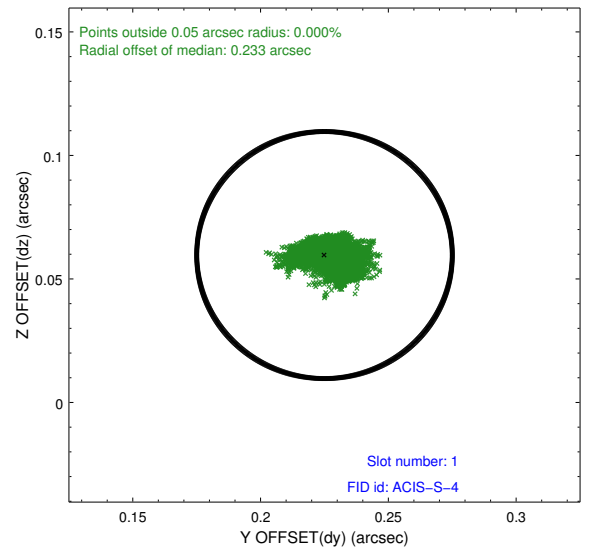
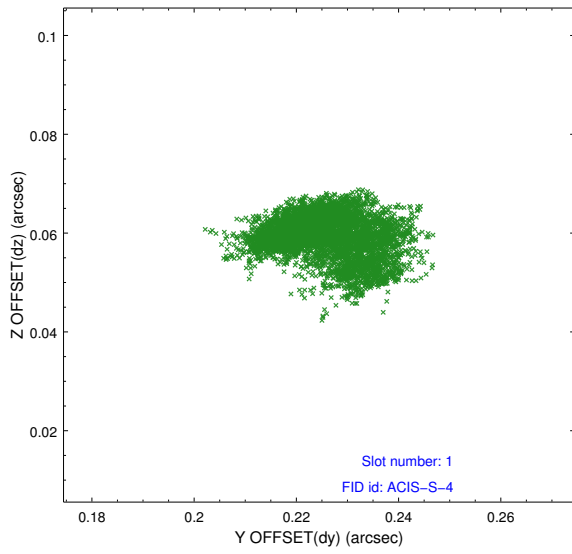


2.5 FID Slots

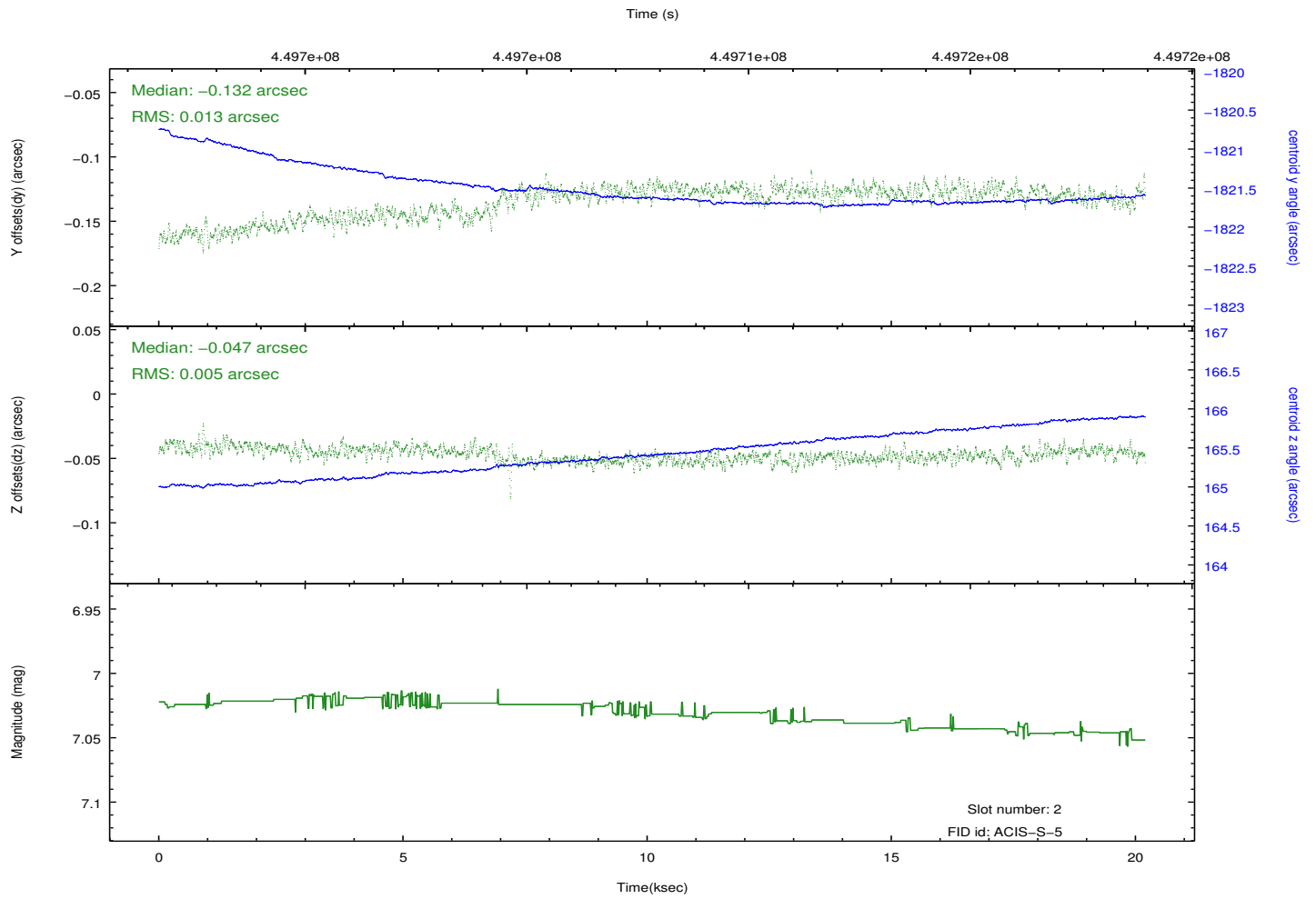
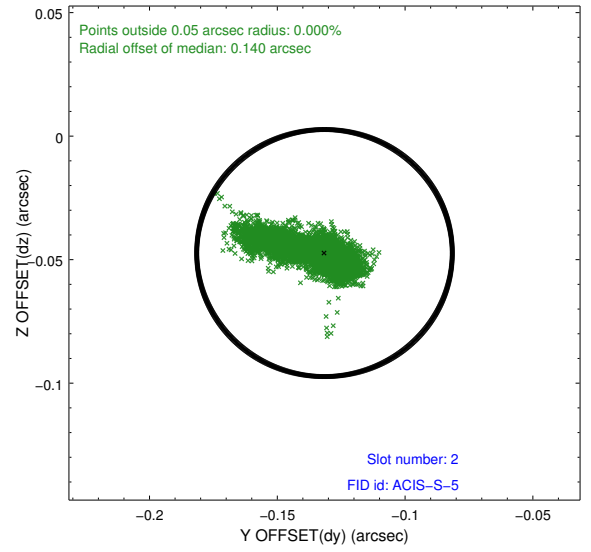
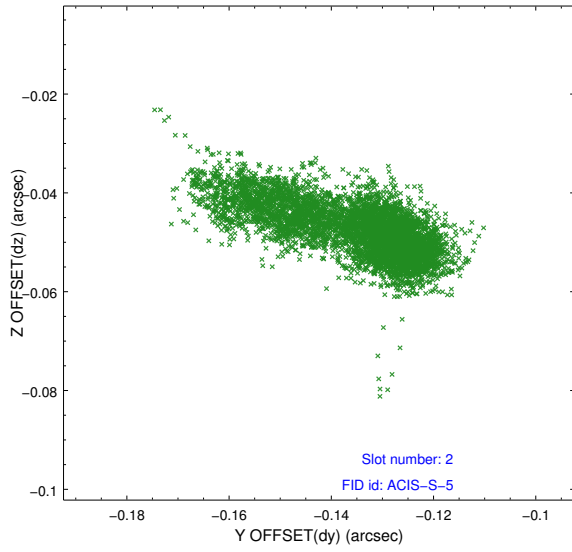
2.5.1 Slot 0



2.5.2 Slot 1



2.5.3 Slot 2



A Summary

A.1 Status

V&V Scientist	Jen Lauer
V&V Date (YYYY-MM-DD)	2012.04.02
V&V Edition	1
V&V Disposition and Status	OK
V&V Charge Time	20.066300154328

A.2 Comments