

V&V Reference Report

L2 ASCDS Version : 8.4.5

Observation 12933 - L2 Version 2
Chandra X-Ray Center

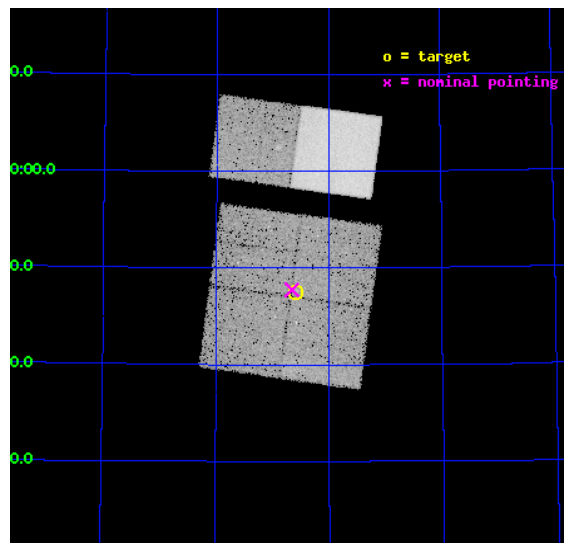
L2 Processing Date : Jul 8 2012

Contents

1	Front	2
2	OBI	3
2.1	OBI	3
2.1.1	Images	3
2.1.2	Bias	3
2.1.3	Parameters	4
2.1.4	Events	4
2.2	Compared Parameters	5
2.3	Aspect	6
2.4	Star Slots	9
2.4.1	Slot 3	9
2.4.2	Slot 4	10
2.4.3	Slot 5	11
2.4.4	Slot 6	12
2.4.5	Slot 7	13
2.5	FID Slots	14
2.5.1	Slot 0	14
2.5.2	Slot 1	15
2.5.3	Slot 2	16
A	Summary	17
A.1	Status	17
A.2	Comments	17

1 Front

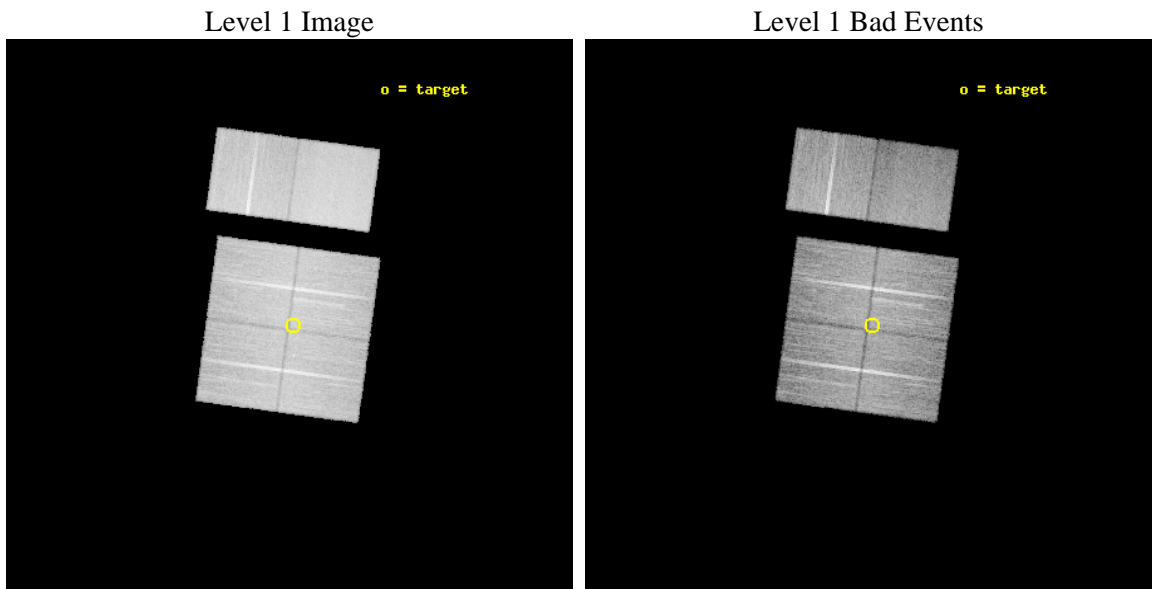
seq_num	900965	Sequence number
obs_id	12933	Observation id
title	Filling the 15 micron Gap: Search for Compton-thick Accretion with Chandra and AKARI in the NEP Deep Field	Proposal title
observer	Dr. Mirko Krumpe	Principal investigator
object	AKARI-NEP-Deep Field	Source name
dtcycle	0	
cycle	P	events from which exps? Prim/Second/Both
ra_targ	269.14583	Observer's specified target RA [deg]
dec_targ	66.7925	Observer's specified target Dec [deg]
ra_nom	269.1644301099	Nominal RA [deg]
dec_nom	66.795923806881	Nominal Dec [deg]
roll_nom	7.7915811281072	Nominal Roll [deg]
revision	2	Processing version of data
ontime	24051.199910462	Sum of GTIs [s]
livetime	23746.649135302	Livetime [s]
ontime0	24051.199910462	Sum of GTIs [s]
ontime1	24051.199910462	Sum of GTIs [s]
ontime2	24047.958910286	Sum of GTIs [s]
ontime3	24051.199910462	Sum of GTIs [s]
ontime6	24051.199910462	Sum of GTIs [s]
ontime7	24051.199910462	Sum of GTIs [s]
l2events	168880	Number of level 2 events



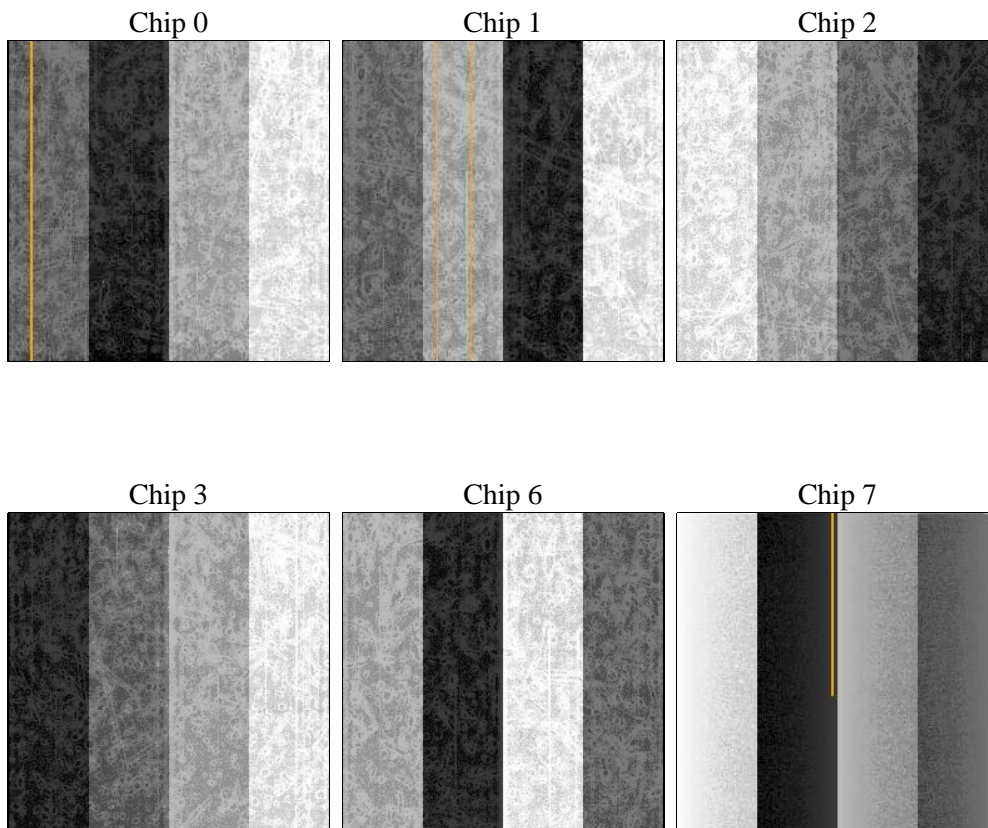
2 OBI

2.1 OBI

2.1.1 Images



2.1.2 Bias



2.1.3 Parameters

obi_num	0	Obi number	sched_exp_time	24000.000000	[s] Scheduled observation exposure time
ascdsver	8.4.5	Processing system revision	ontime	24051.199910462	Sum of GTIs [s]
caldsver	4.5.0	 	ontime0	24051.199910462	Sum of GTIs [s]
date	2012-07-08T21:17:25	Date and time of file creation	ontime1	24051.199910462	Sum of GTIs [s]
revision	2	Processing version of data	ontime2	24047.958910286	Sum of GTIs [s]
			ontime3	24051.199910462	Sum of GTIs [s]
			ontime6	24051.199910462	Sum of GTIs [s]
			ontime7	24051.199910462	Sum of GTIs [s]
			l1events	1017331	Number of level 1 events

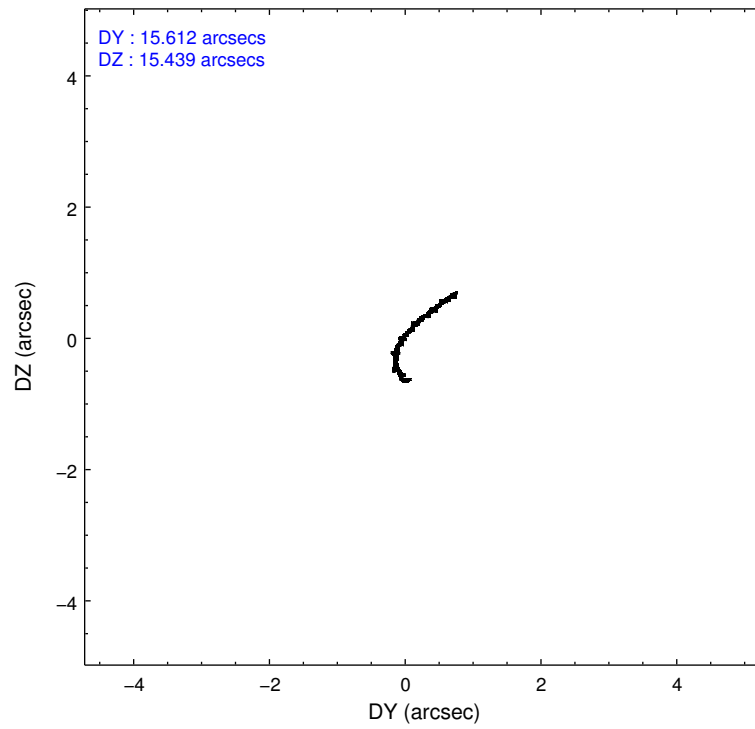
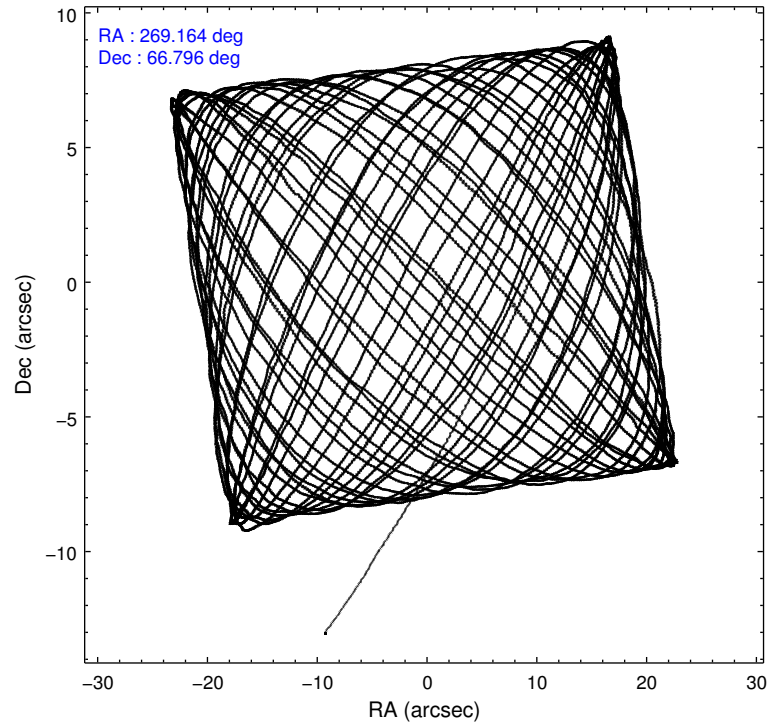
2.1.4 Events

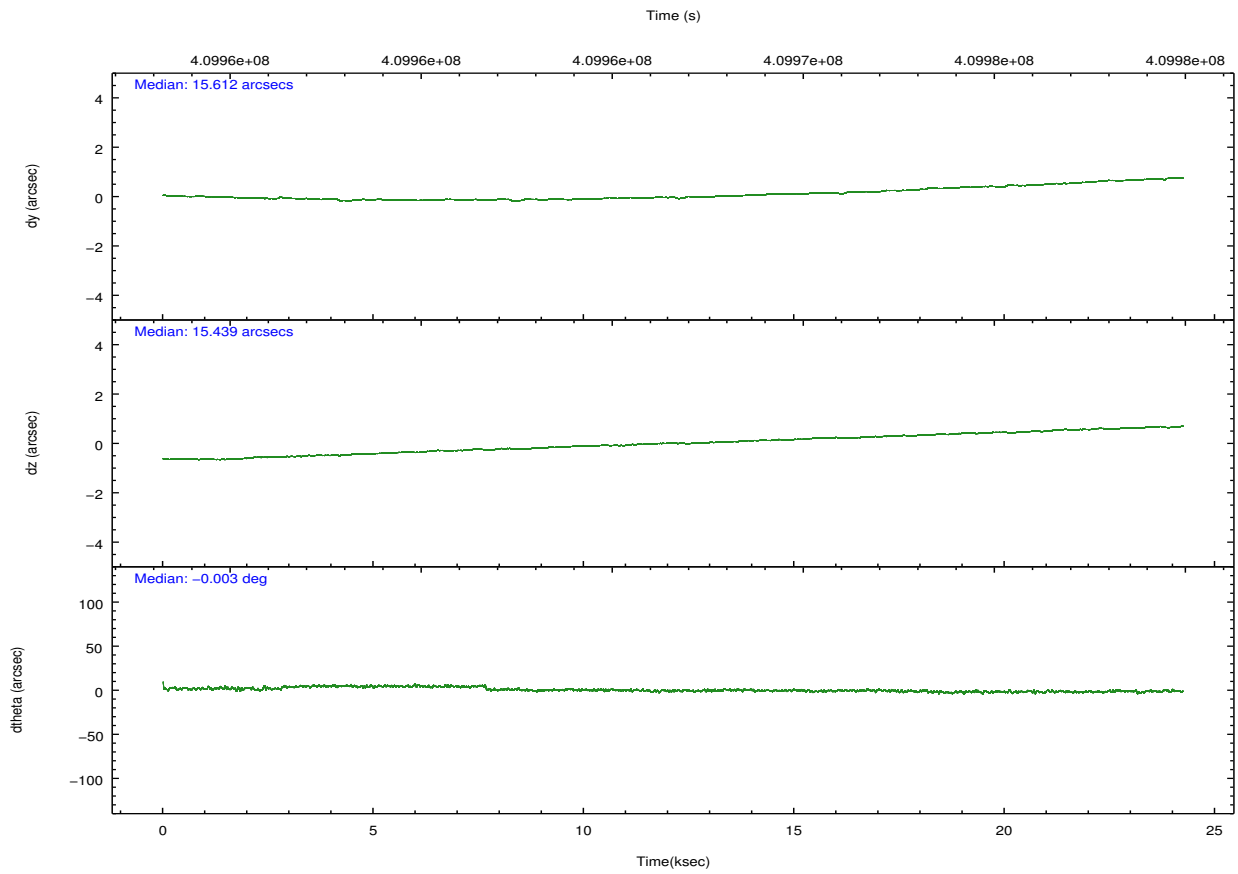
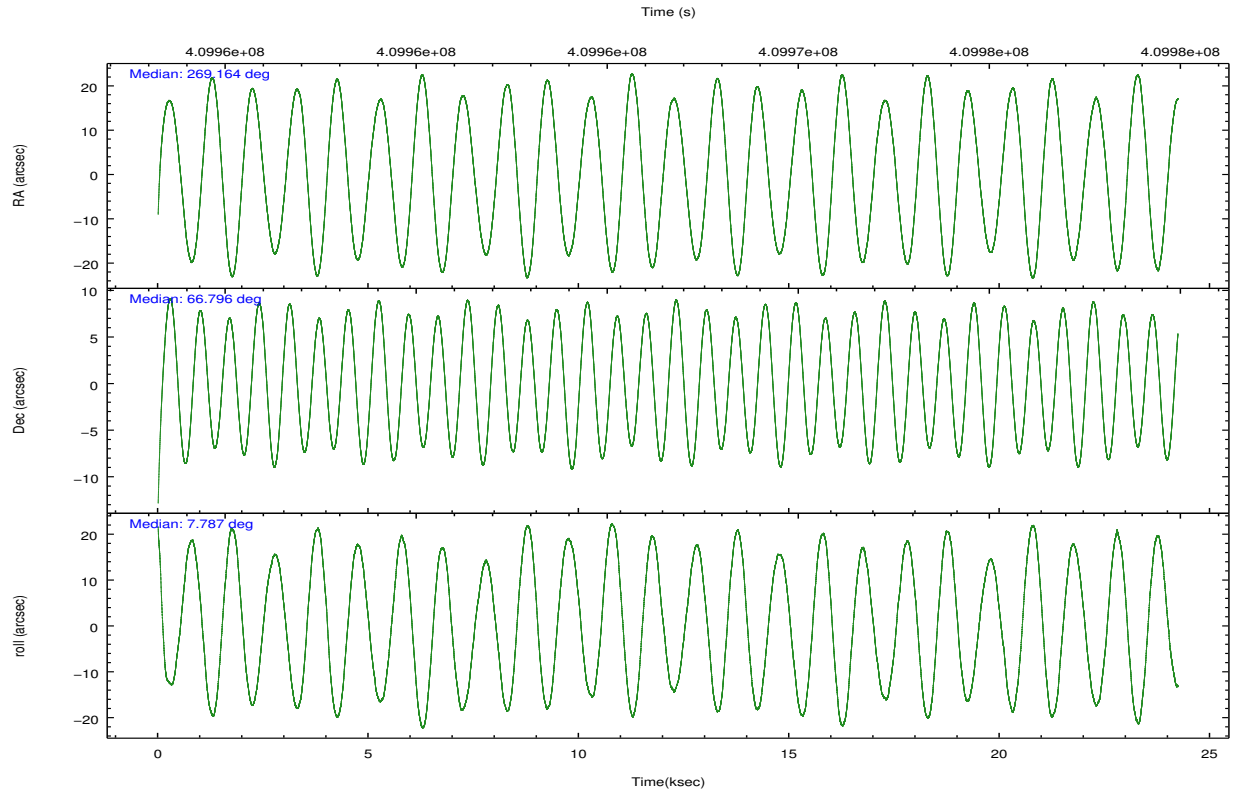
	ccd 0	ccd 1	ccd 2	ccd 3	ccd 6	ccd 7		ccd 0	ccd 1	ccd 2	ccd 3	ccd 6	ccd 7
level 1 events	149496	155480	164701	165878	174990	206786	grade 0 events	6218	7397	6554	6099	6600	8383
rejected events	130986	134970	146560	148714	155632	113909		4%	4%	3%	3%	3%	4%
rejected %	87%	86%	88%	89%	88%	55%	grade 1 events	81	91	109	95	82	286
								0%	0%	0%	0%	0%	0%
							grade 2 events	4686	4824	4496	3811	4545	19030
								3%	3%	2%	2%	2%	9%
							grade 3 events	2006	2091	1741	1841	1983	8148
								1%	1%	1%	1%	1%	3%
							grade 4 events	1866	2030	1895	1923	1912	8045
								1%	1%	1%	1%	1%	3%
							grade 5 events	7028	7309	6625	7742	7773	21274
								4%	4%	4%	4%	4%	10%
							grade 6 events	3740	4178	3459	3494	4322	49298
								2%	2%	2%	2%	2%	23%
							grade 7 events	123871	127560	139822	140873	147773	92322
								82%	82%	84%	84%	84%	44%

2.2 Compared Parameters

Parameter	Planned	Actual	Parameter	Planned	Actual
Instrument	ACIS	ACIS	Obspar format version number	7	7
Detector	ACIS-012367	ACIS-012367	Obspar file type	PREDICTED	ACTUAL
Grating	NONE	NONE	Obspar update status	NONE	UPDATED
Data mode	VFAINT	VFAINT	CCD I0 on	Y	Y
Observation mode	POINTING	POINTING	CCD I1 on	Y	Y
[deg] Pointing RA	269.109463	269.1644301098956	CCD I2 on	Y	Y
[deg] Pointing Dec	66.778958	66.79592380688071	CCD I3 on	Y	Y
[deg] Pointing Roll	7.633417	7.791581128107238	CCD S0 on	N	N
[mm] SIM focus pos	-0.782348	-0.7809083437167272	CCD S1 on	N	N
[mm] SIM defocus	0	0.001439871863259334	CCD S2 on	O2	Y
[mm] SIM translation stage pos	-233.592463	-233.5874344608287	CCD S3 on	O1	Y
[mm] SIM translation stage offset	0	-0.005018542100998502	CCD S4 on	N	N
[s] Observation start time (MET)	409954714.184000	409953682.85846	CCD S5 on	N	N
Observation start date	2010-12-28T20:17:28	2010-12-28T20:01:22	Number of optional ACIS chips dropped	0	0
[s] Observation end time (MET)	409978714.184000	409979441.62229	On-chip summing requested	N	N
Observation end date	2010-12-29T02:57:28	2010-12-29T03:10:41	Subarray requested	NONE	NONE
Read mode	TIMED	TIMED	Alternating exposures requested	N	N
			[s] Primary exposure time	0.000000	3.2

2.3 Aspect



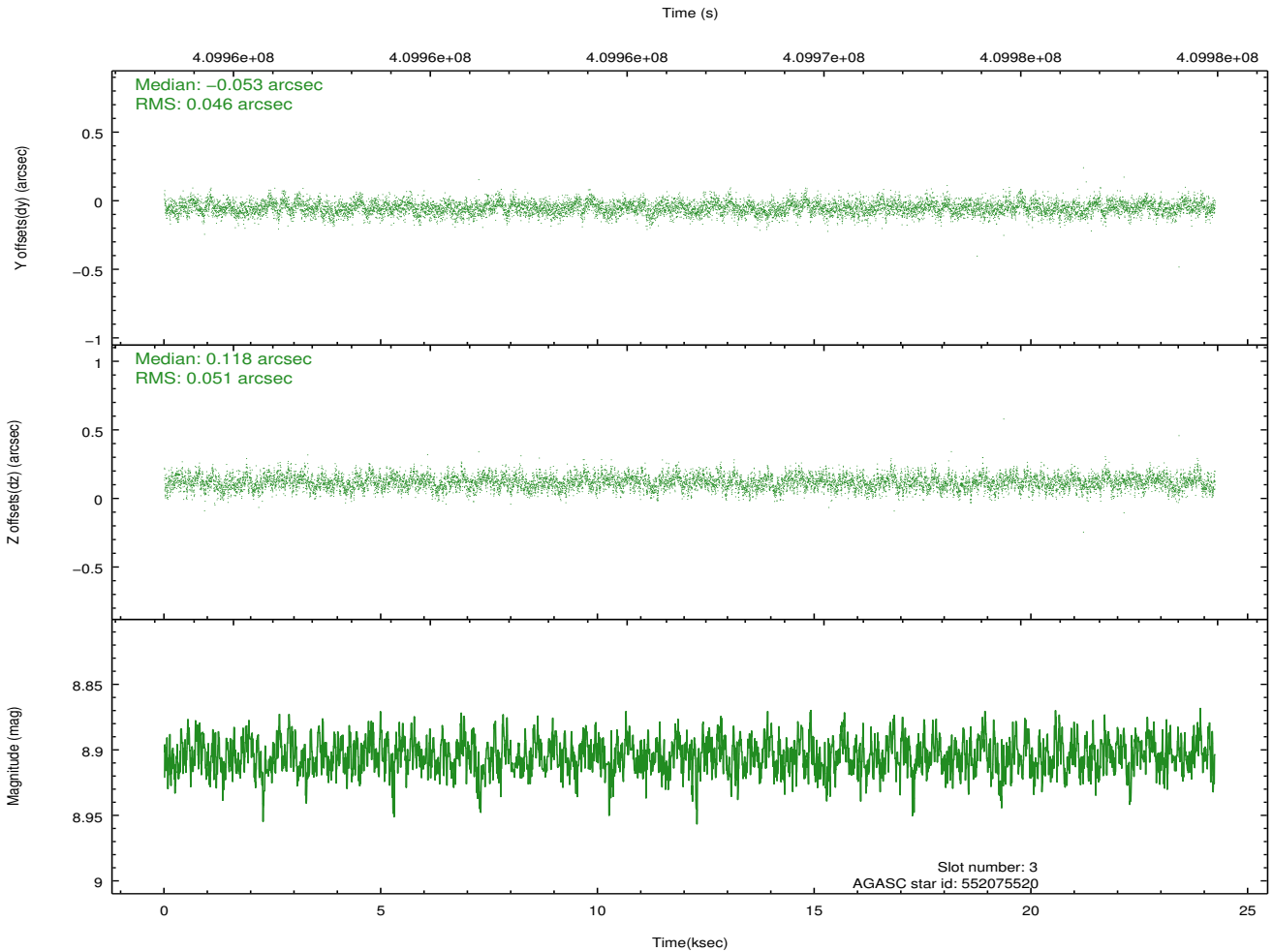
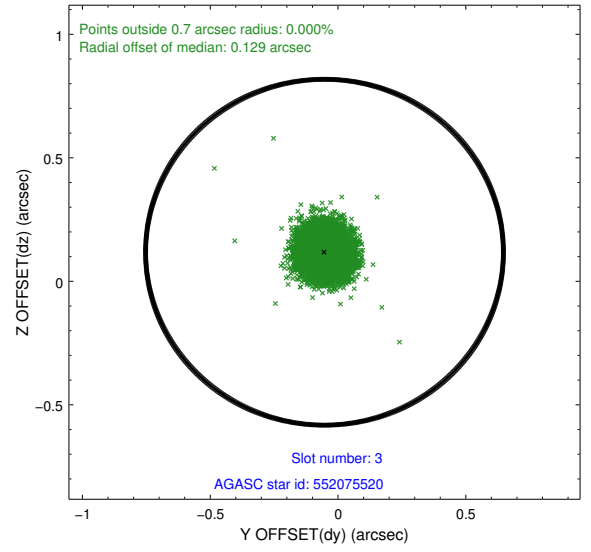
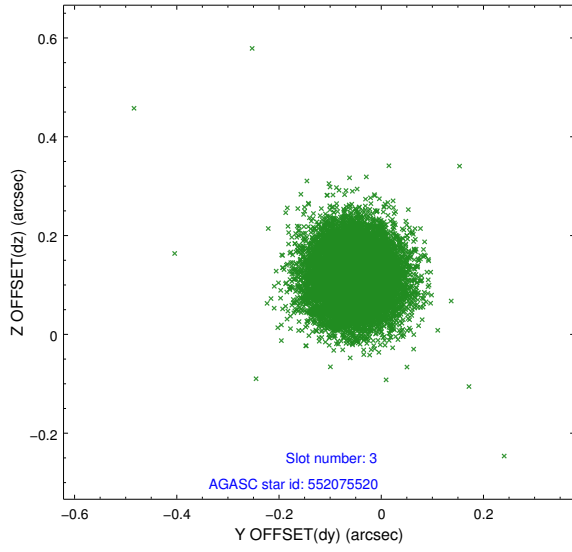


Slot Statistics

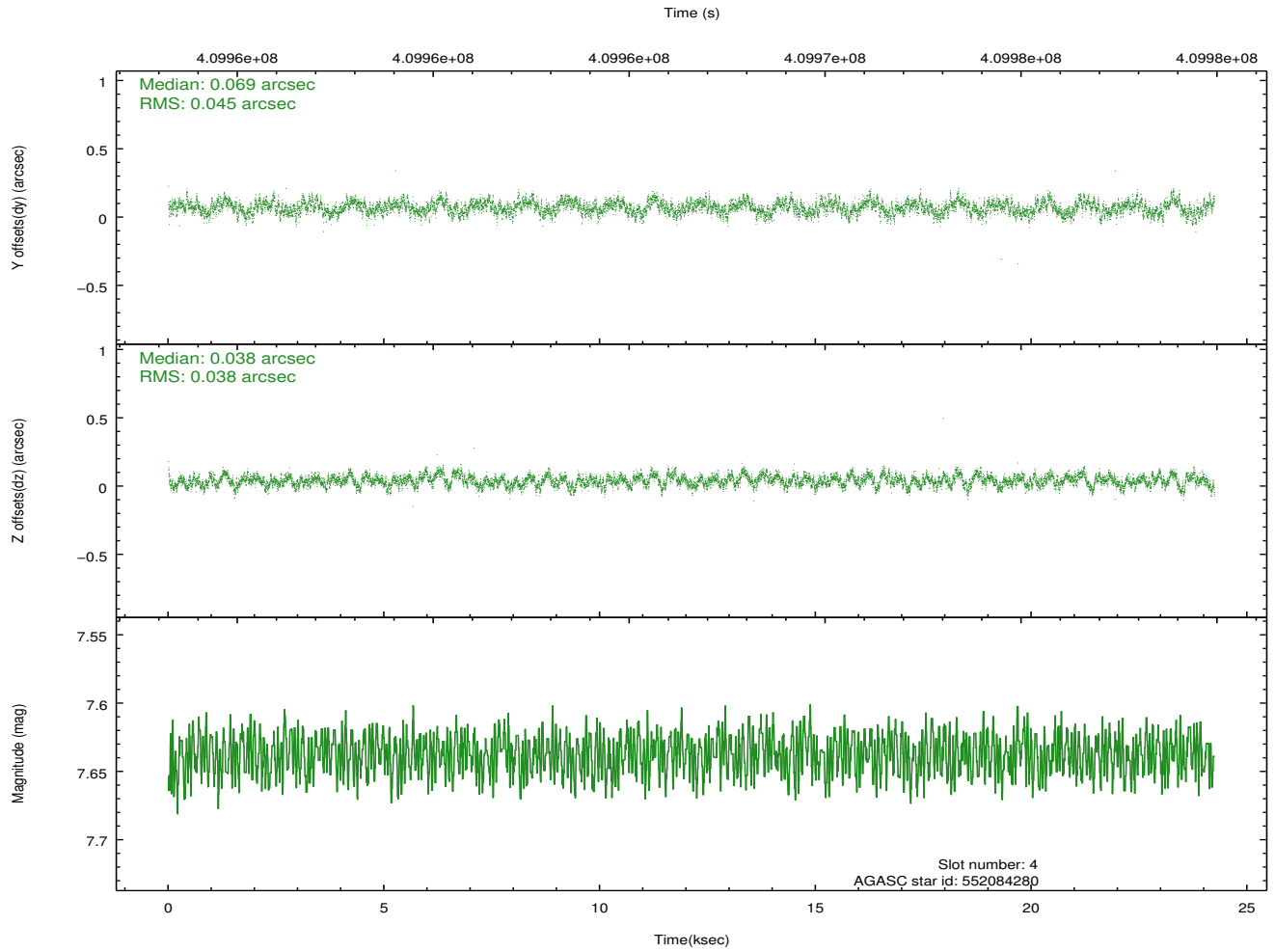
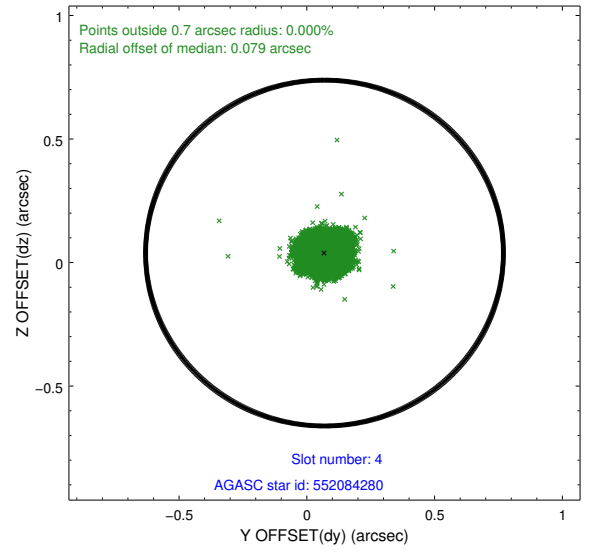
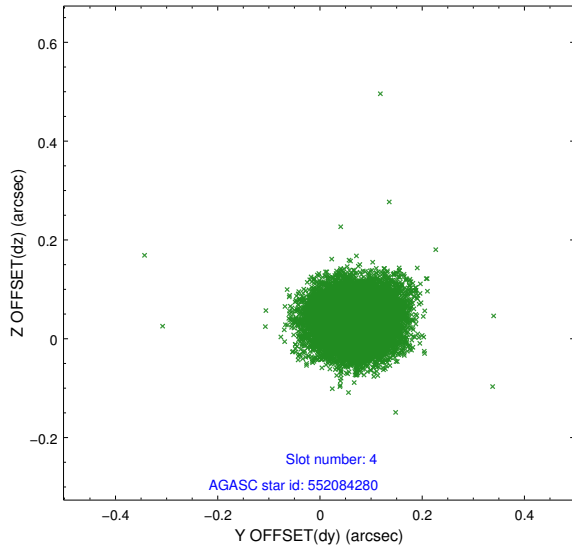
slot	status	id	mag	n_pts	med_dy	med_dz	dr1	dr2	ra	dec	mean_y	mean_z
0	FID	ACIS-I-1	7.04	5912	-0.048	0.018	0.036	0.050	0.000000	0.000000	923.67	-839.02
1	FID	ACIS-I-2	6.95	5911	-0.159	-0.071	0.011	0.019	0.000000	0.000000	-770.46	-845.63
2	FID	ACIS-I-4	6.96	5909	0.109	0.119	0.028	0.039	0.000000	0.000000	2143.64	1060.83
3	GUIDE	552075520	8.91	11817	-0.053	0.118	0.073	0.118	269.430358	66.310622	236.84	-1731.44
4	GUIDE	552084280	7.64	11823	0.069	0.038	0.063	0.100	268.233478	66.419076	-1420.67	-1107.92
5	GUIDE	552213664	8.85	11818	0.024	0.086	0.112	0.178	270.812461	66.341359	2233.88	-1854.69
6	GUIDE	552216648	9.73	11802	-0.042	-0.155	0.145	0.232	270.130141	67.075369	1562.07	878.77
7	GUIDE	552081976	9.24	11811	0.005	-0.094	0.103	0.163	269.000724	66.928627	-79.94	554.60

2.4 Star Slots

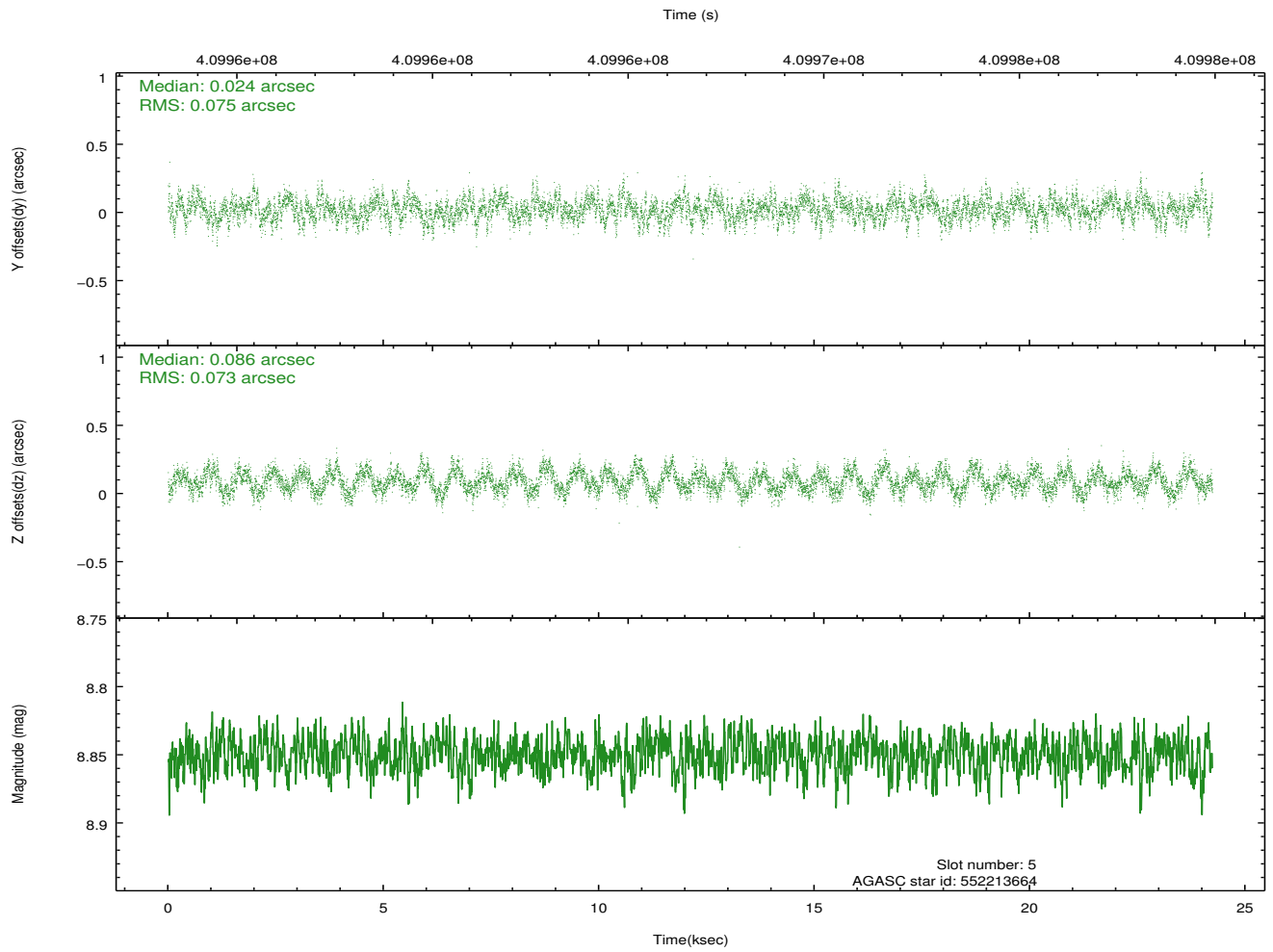
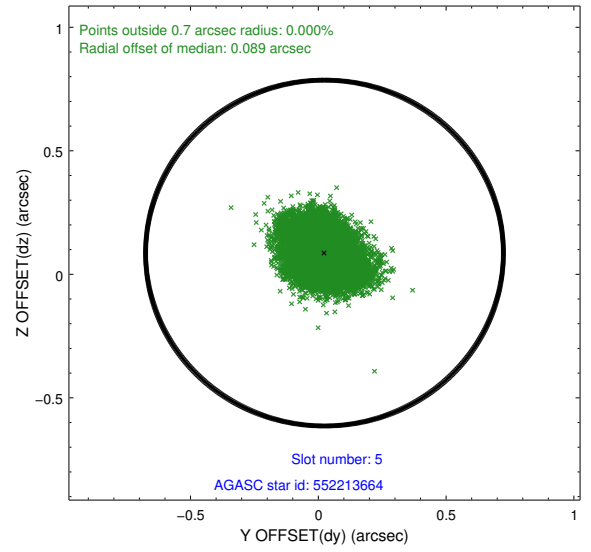
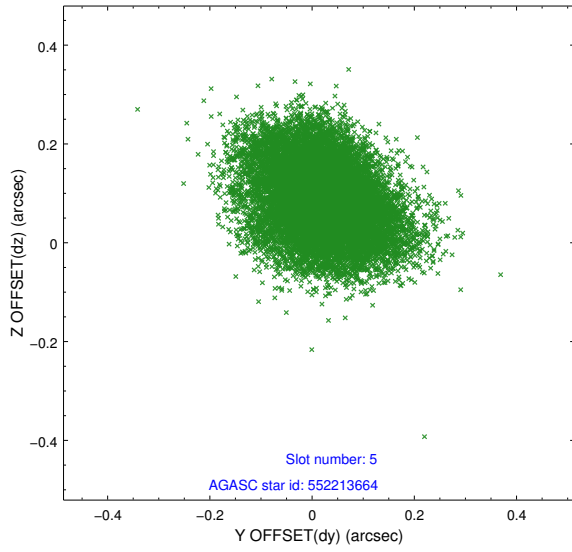
2.4.1 Slot 3



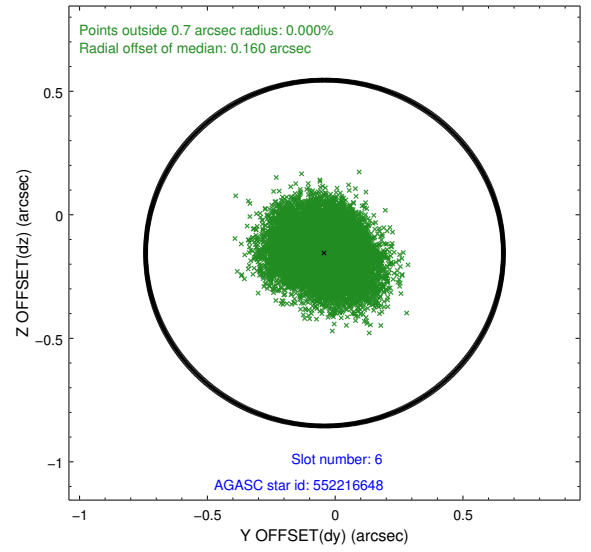
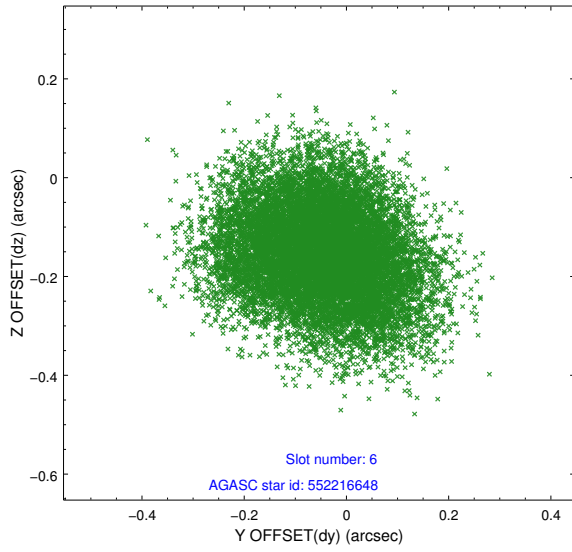
2.4.2 Slot 4



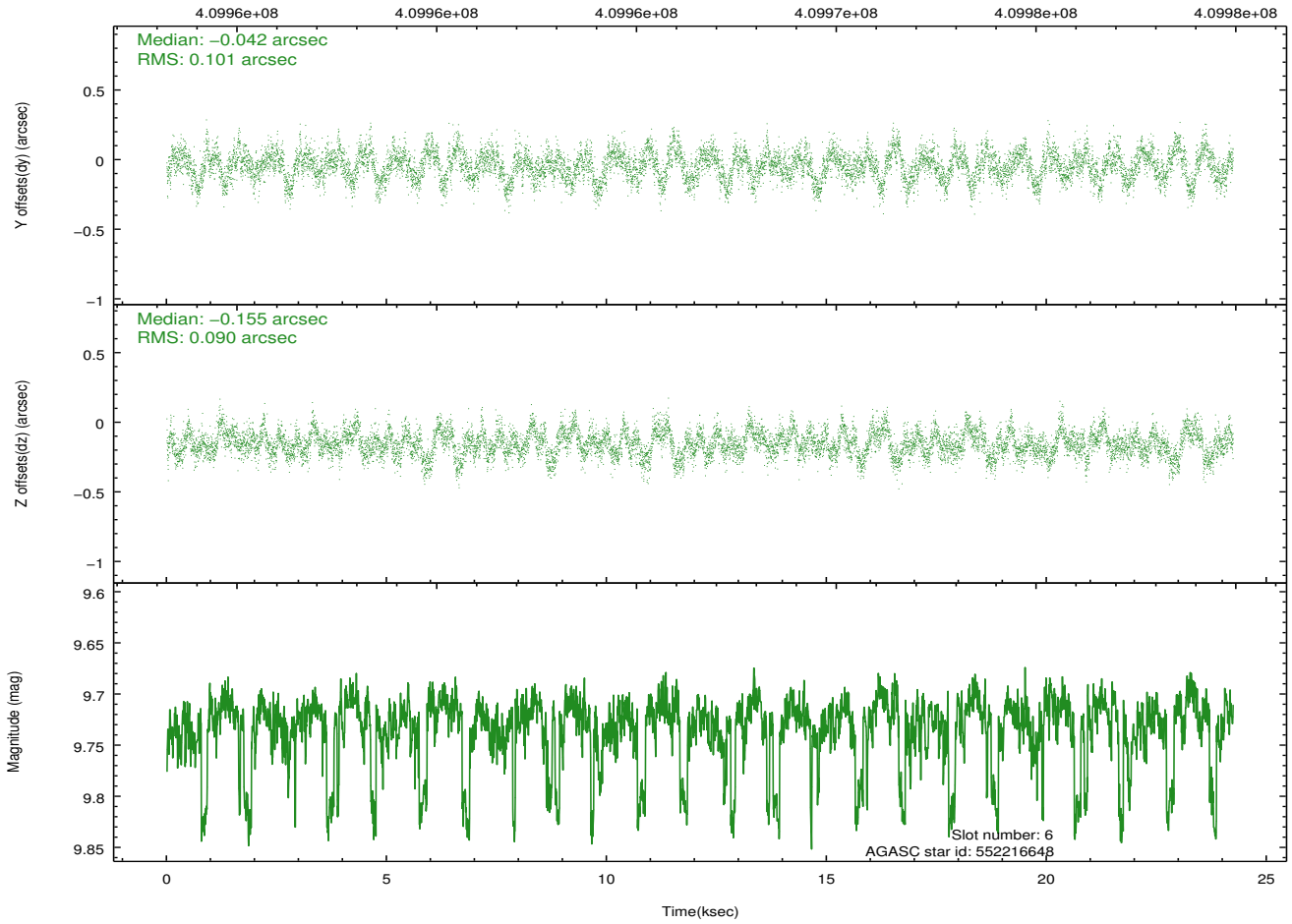
2.4.3 Slot 5



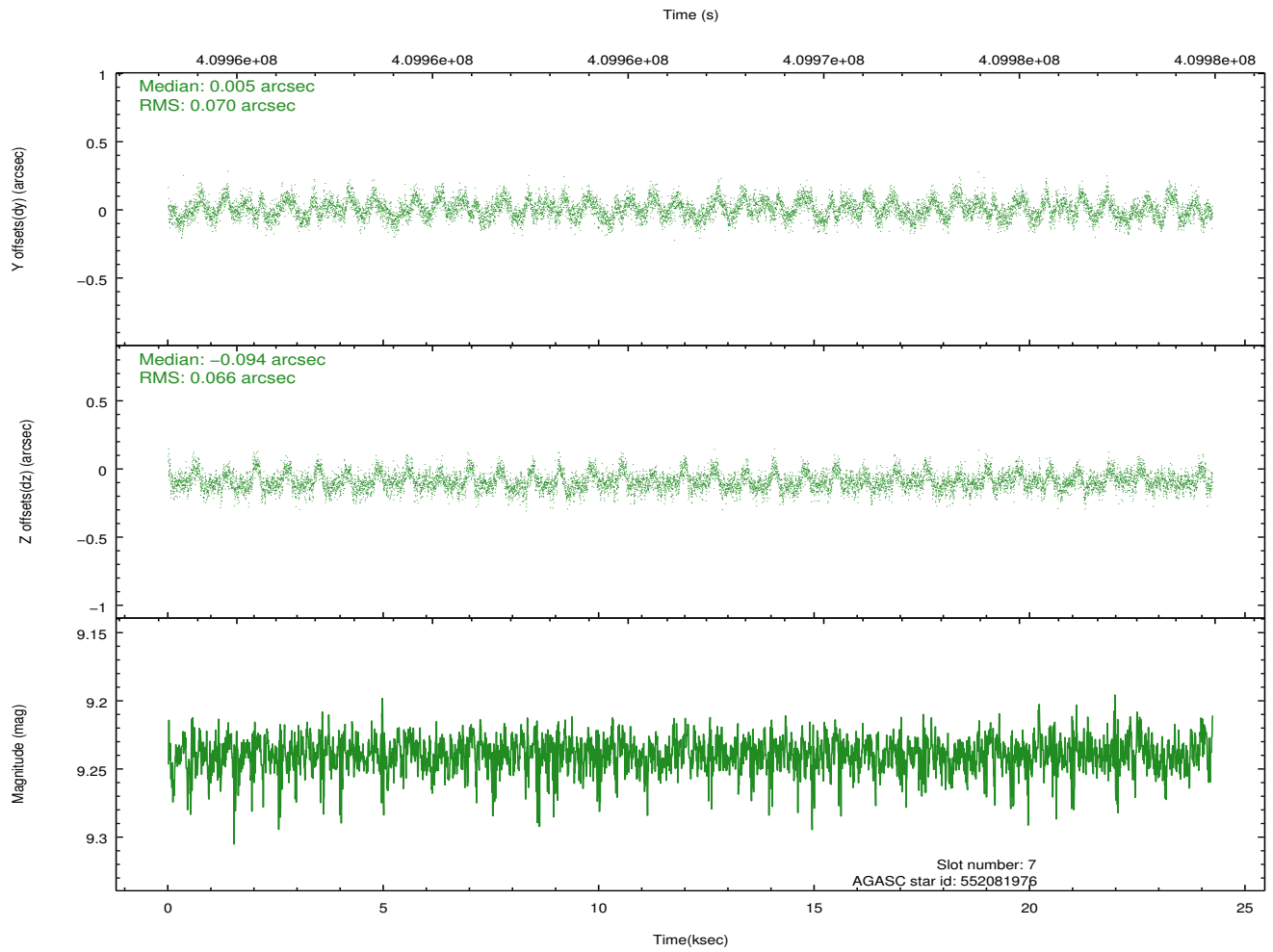
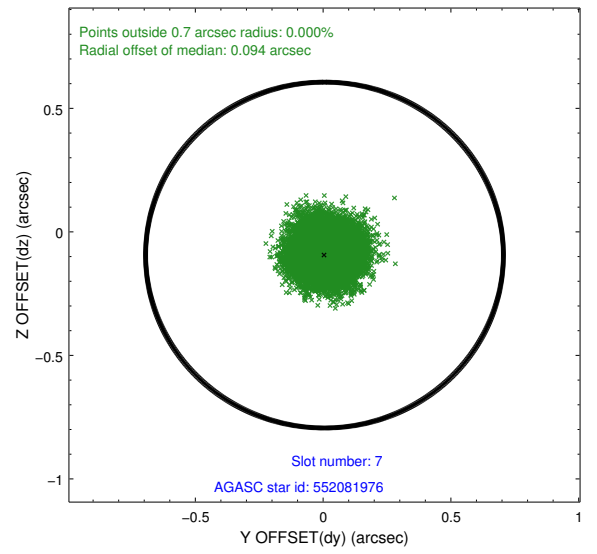
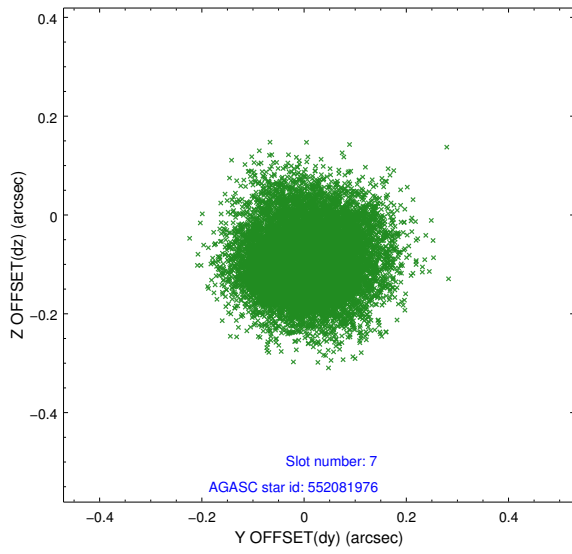
2.4.4 Slot 6



Time (s)

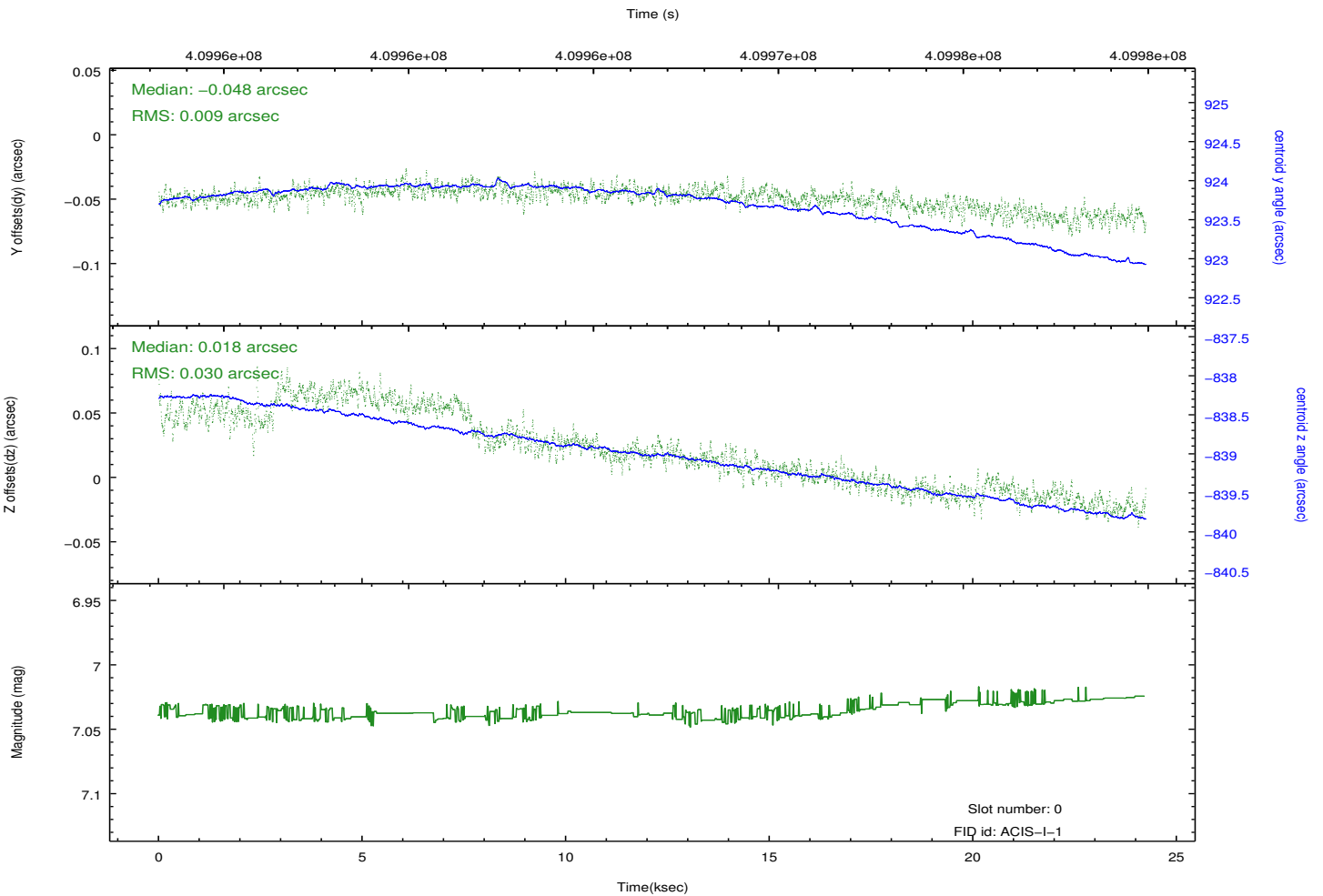
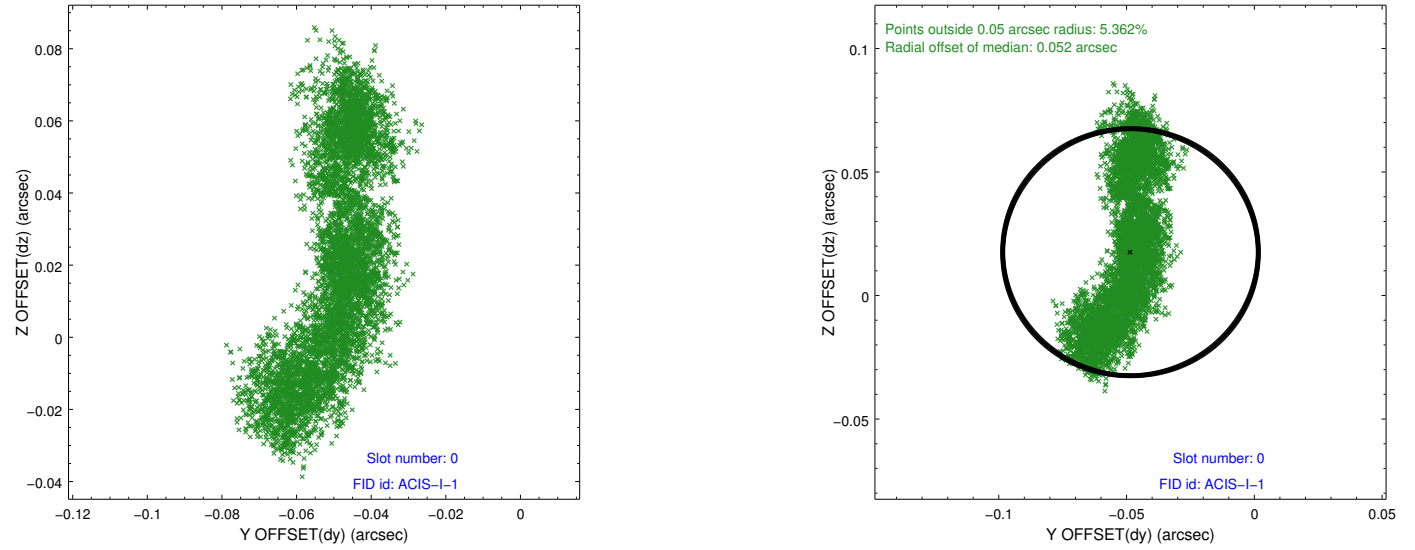


2.4.5 Slot 7

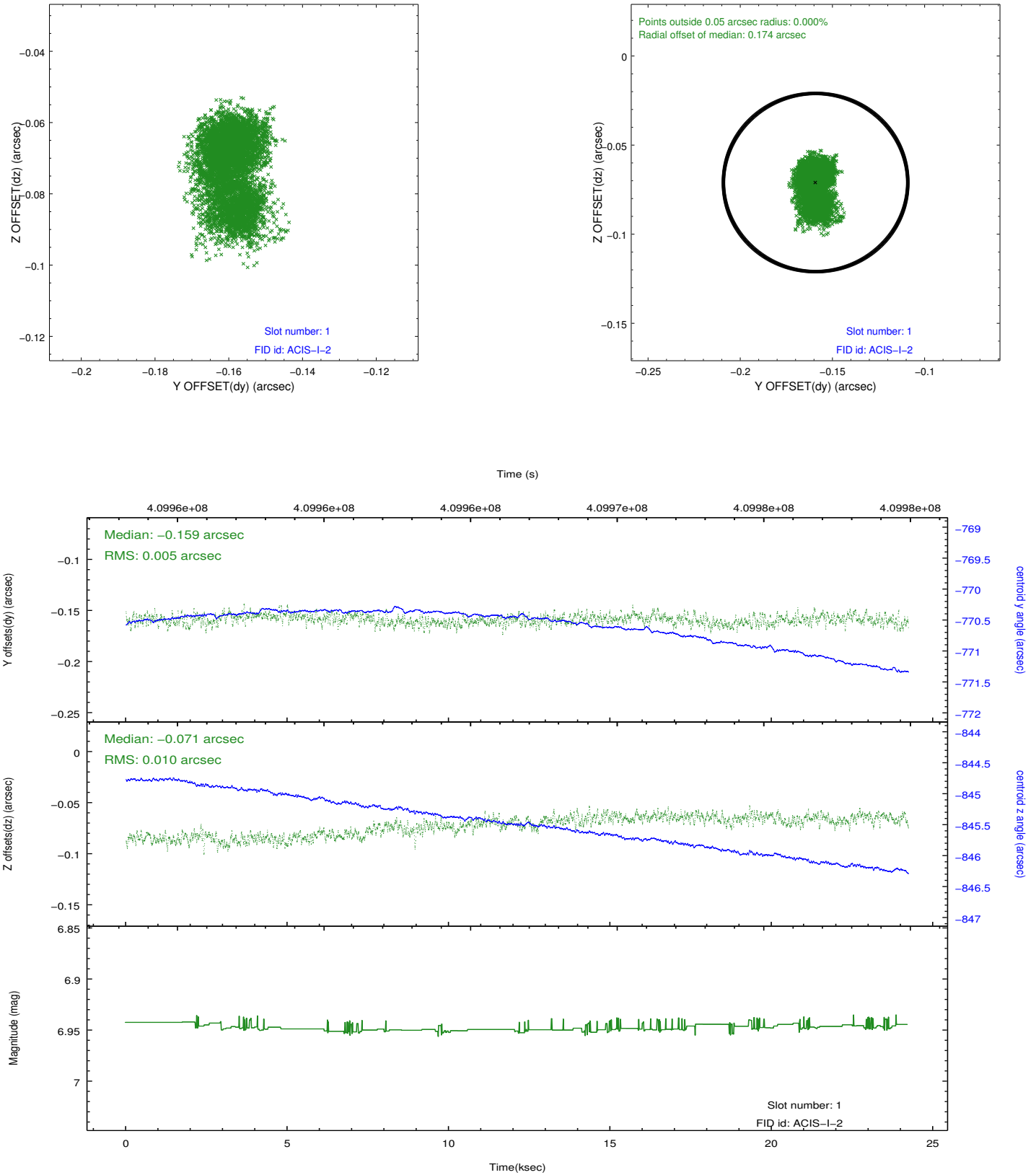


2.5 FID Slots

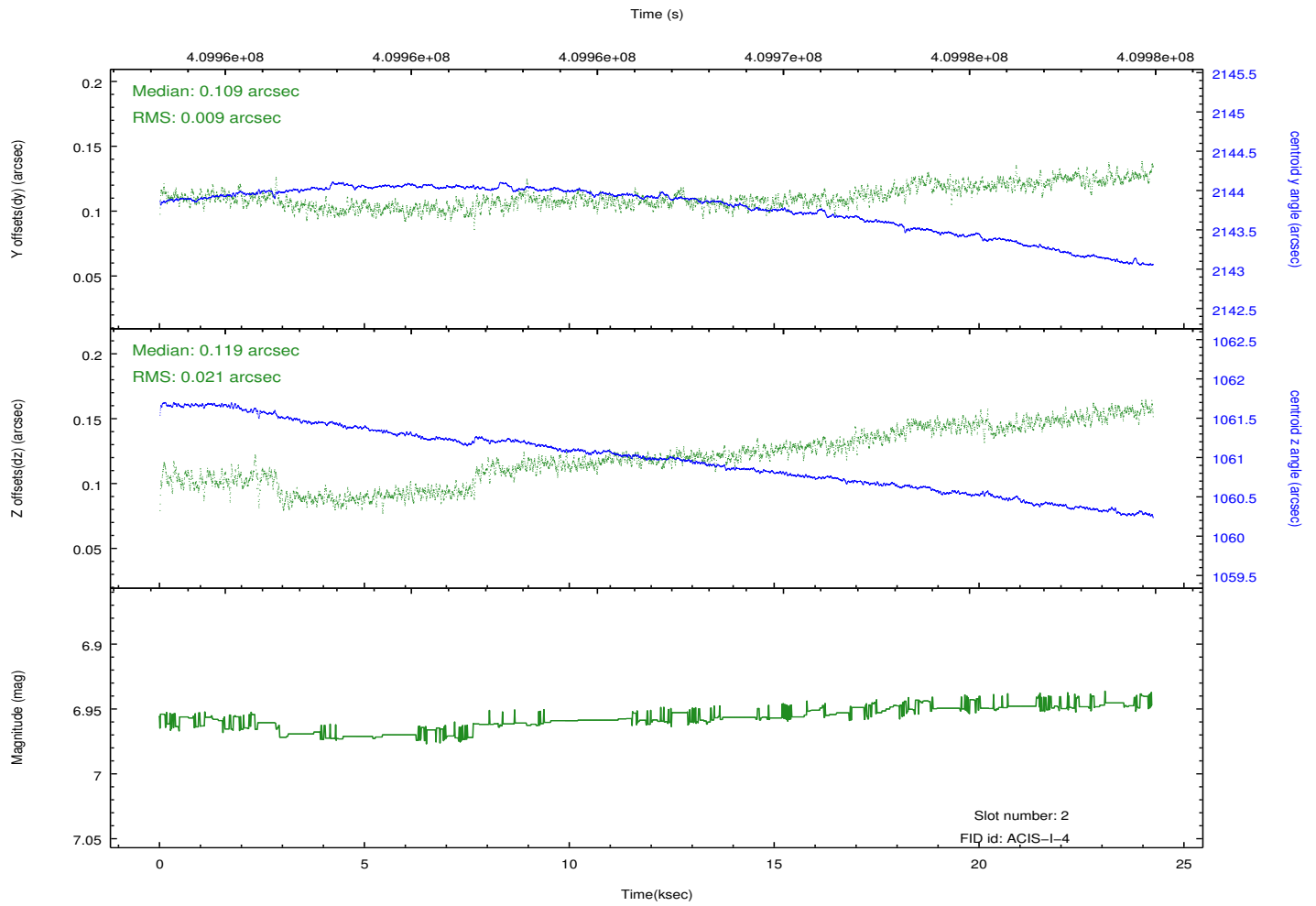
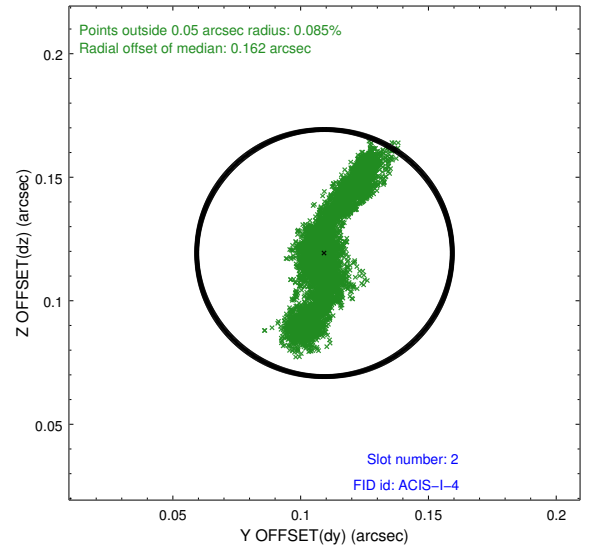
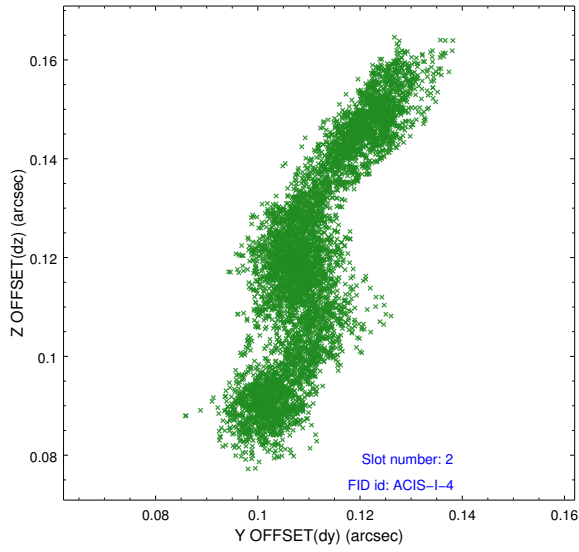
2.5.1 Slot 0



2.5.2 Slot 1



2.5.3 Slot 2



A Summary

A.1 Status

V&V Scientist	Jen Lauer
V&V Date (YYYY-MM-DD)	2012.07.18
V&V Edition	1
V&V Disposition and Status	OK
V&V Charge Time	24.051199910462

A.2 Comments

Roll preference met.