

V&V Reference Report

L2 ASCDS Version : 8.4.4

Observation 13403 - L2 Version 1
Chandra X-Ray Center

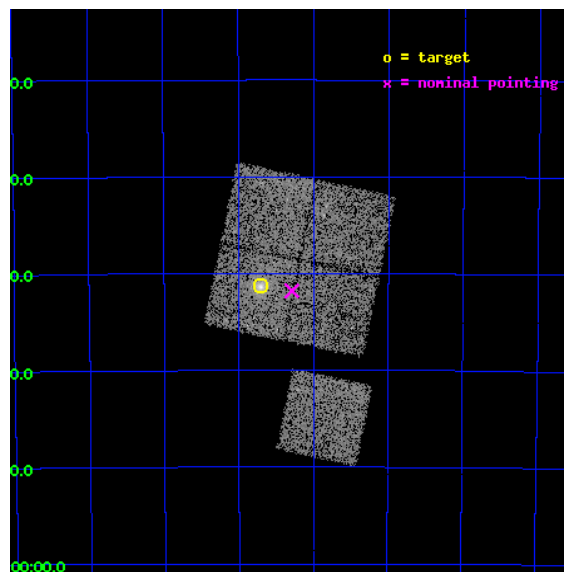
L2 Processing Date : Apr 20 2012

Contents

1	Front	2
2	OBI	3
2.1	OBI	3
2.1.1	Images	3
2.1.2	Bias	3
2.1.3	Parameters	4
2.1.4	Events	4
2.2	Compared Parameters	5
2.3	Aspect	6
2.4	Star Slots	9
2.4.1	Slot 3	9
2.4.2	Slot 4	10
2.4.3	Slot 5	11
2.4.4	Slot 6	12
2.4.5	Slot 7	13
2.5	FID Slots	14
2.5.1	Slot 0	14
2.5.2	Slot 1	15
2.5.3	Slot 2	16
A	Summary	17
A.1	Status	17
A.2	Comments	17

1 Front

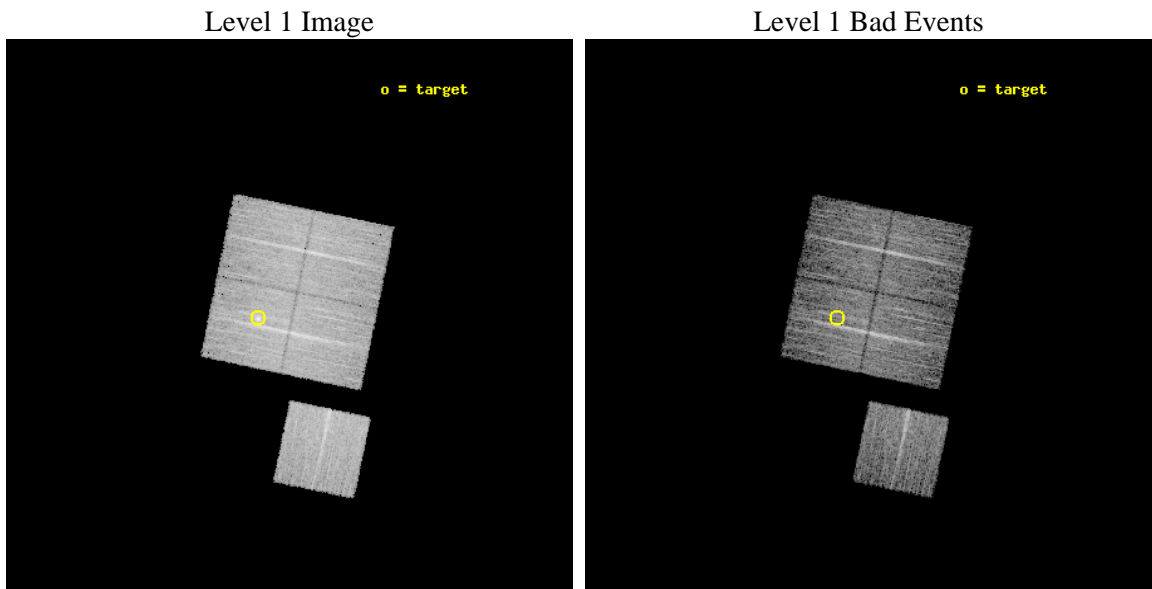
seq_num	801090	Sequence number
obs_id	13403	Observation id
title	Chandra Observation of the Most Massive Galaxy Clusters Detected in the South Pole Telescope Survey	Proposal title
observer	Professor Gordon Garmire	Principal investigator
object	SPT-CLJ0234-5831	Source name
dtcycle	0	
cycle	P	events from which exps? Prim/Second/Both
ra_targ	38.675	Observer's specified target RA [deg]
dec_targ	-58.520611	Observer's specified target Dec [deg]
ra_nom	38.572375165708	Nominal RA [deg]
dec_nom	-58.52982852247	Nominal Dec [deg]
roll_nom	191.7712786184	Nominal Roll [deg]
revision	1	Processing version of data
ontime	10078.10007751	Sum of GTIs [s]
livetime	9946.4222806079	Livetime [s]
ontime0	10078.10007751	Sum of GTIs [s]
ontime1	10078.10007751	Sum of GTIs [s]
ontime2	10071.817986727	Sum of GTIs [s]
ontime3	10078.10007751	Sum of GTIs [s]
ontime6	10074.959047198	Sum of GTIs [s]
l2events	32591	Number of level 2 events



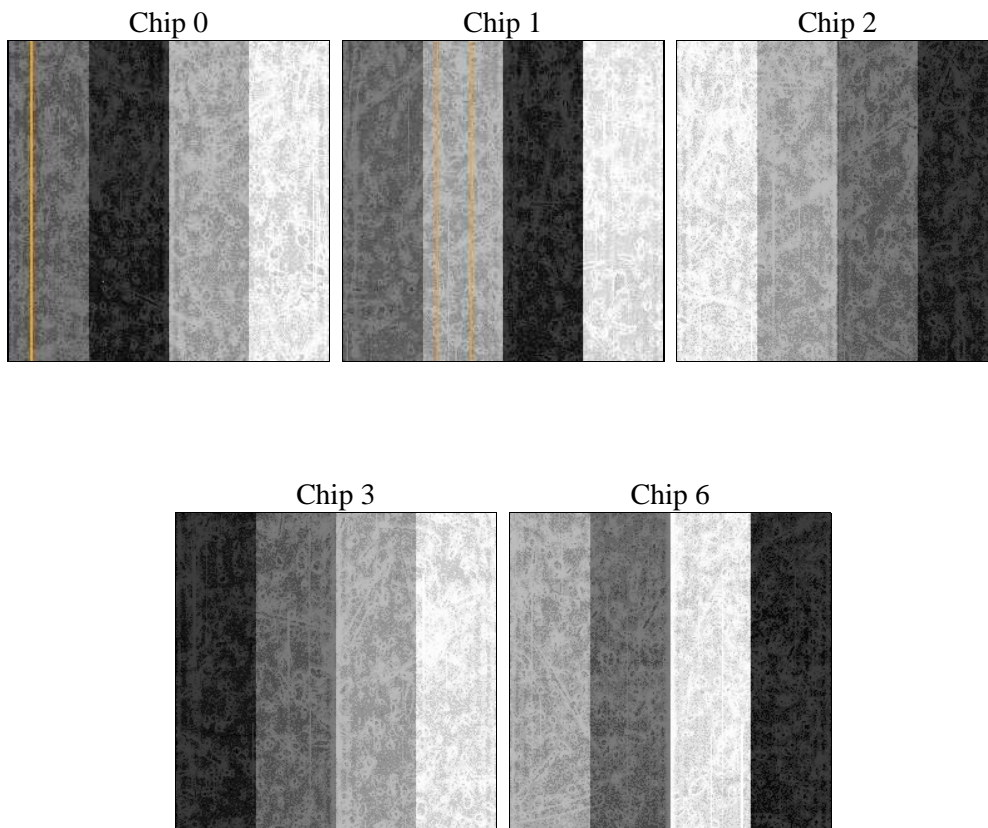
2 OBI

2.1 OBI

2.1.1 Images



2.1.2 Bias



2.1.3 Parameters

obi_num	0	Obi number	sched_exp_time	10000.343000	[s] Scheduled observation exposure time
ascdsver	8.4.4	Processing system revision	ontime	10078.10007751	Sum of GTIs [s]
caldbver	4.4.9	 	ontime0	10078.10007751	Sum of GTIs [s]
date	2012-04-20T11:52:00	Date and time of file creation	ontime1	10078.10007751	Sum of GTIs [s]
revision	1	Processing version of data	ontime2	10071.817986727	Sum of GTIs [s]
			ontime3	10078.10007751	Sum of GTIs [s]
			ontime6	10074.959047198	Sum of GTIs [s]
			l1events	304822	Number of level 1 events

2.1.4 Events

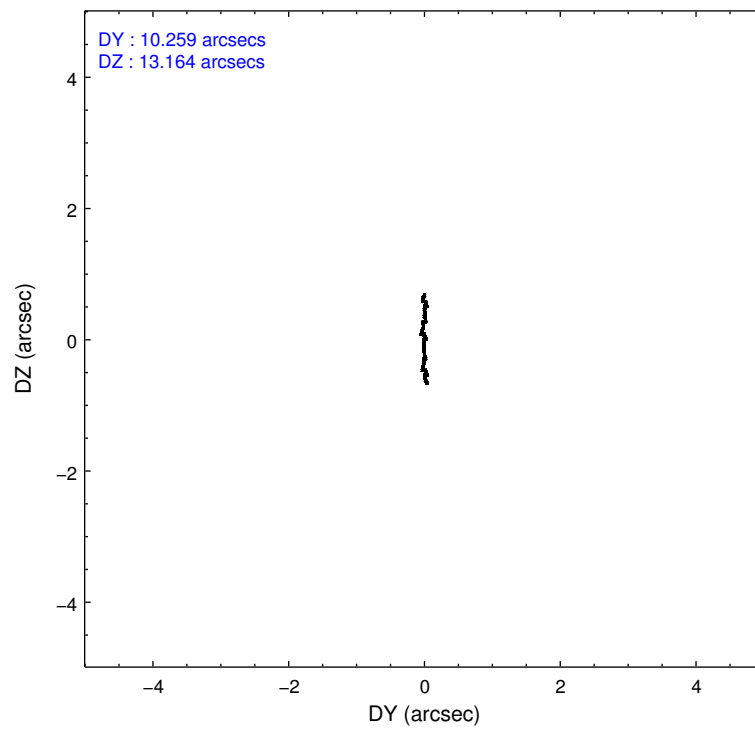
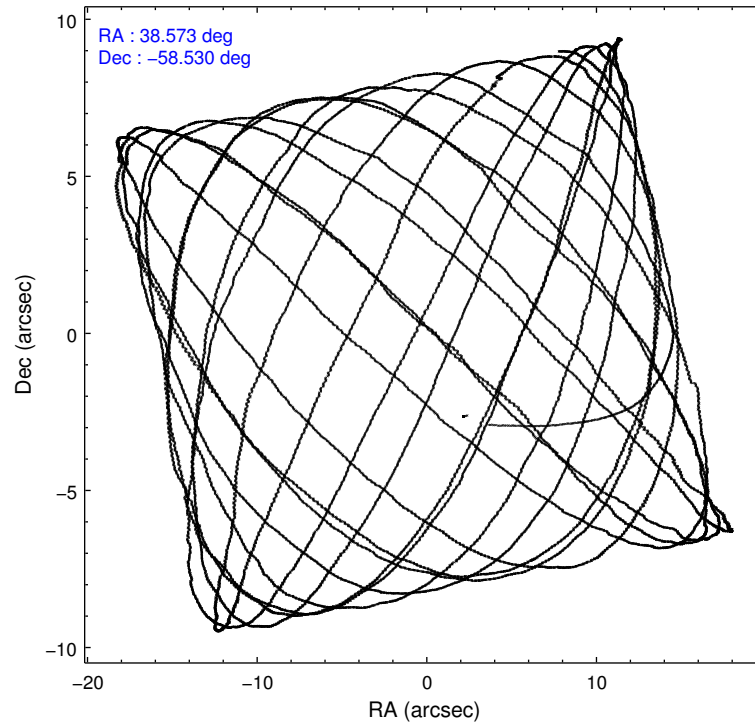
	ccd 0	ccd 1	ccd 2	ccd 3	ccd 6
level 1 events	57943	57319	62773	64437	62350
rejected events	50953	49473	56094	55085	55244
rejected %	87%	86%	89%	85%	88%

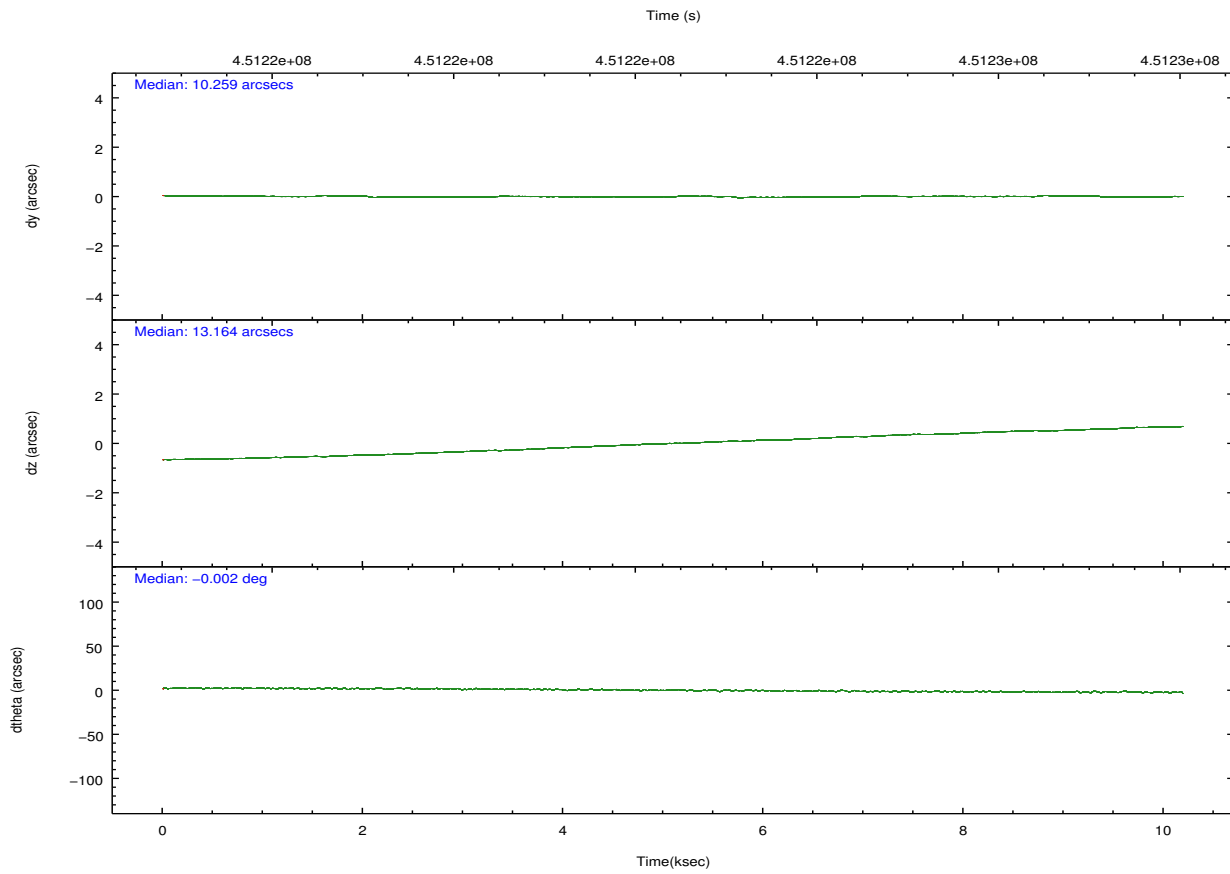
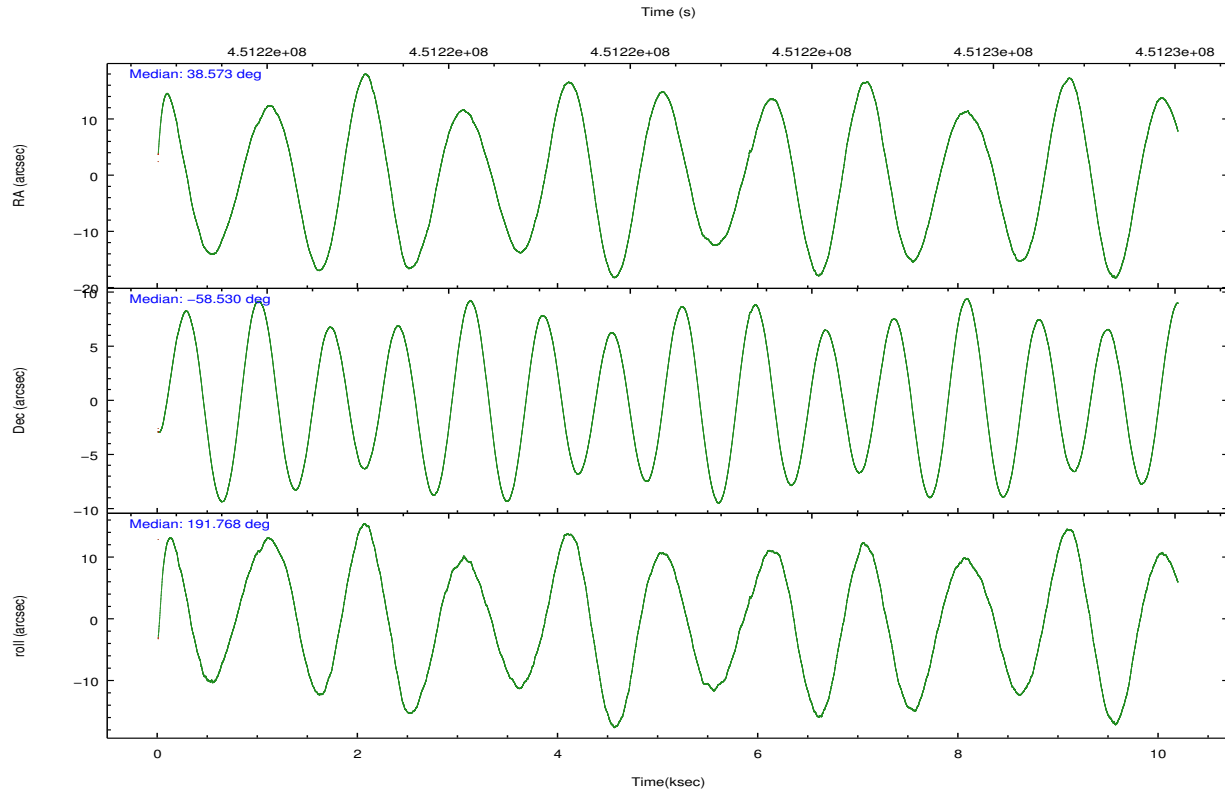
	ccd 0	ccd 1	ccd 2	ccd 3	ccd 6
grade 0 events	2557	2768	2430	4506	2484
	4%	4%	3%	6%	3%
grade 1 events	35	38	34	51	25
	0%	0%	0%	0%	0%
grade 2 events	1639	1886	1504	1755	1560
	2%	3%	2%	2%	2%
grade 3 events	729	776	736	815	707
	1%	1%	1%	1%	1%
grade 4 events	679	738	703	803	734
	1%	1%	1%	1%	1%
grade 5 events	2699	2956	2522	3083	2925
	4%	5%	4%	4%	4%
grade 6 events	1387	1678	1309	1475	1622
	2%	2%	2%	2%	2%
grade 7 events	48218	46479	53535	51949	52293
	83%	81%	85%	80%	83%

2.2 Compared Parameters

Parameter	Planned	Actual	Parameter	Planned	Actual
Instrument	ACIS	ACIS	Obspar format version number	7	7
Detector	ACIS-01236	ACIS-01236	Obspar file type	PREDICTED	ACTUAL
Grating	NONE	NONE	Obspar update status	NONE	UPDATED
Data mode	VFAINT	VFAINT	CCD I0 on	Y	Y
Observation mode	POINTING	POINTING	CCD I1 on	Y	Y
[deg] Pointing RA	38.611435	38.57237516570771	CCD I2 on	Y	Y
[deg] Pointing Dec	-58.511443	-58.52982852246994	CCD I3 on	Y	Y
[deg] Pointing Roll	191.595917	191.7712786183957	CCD S0 on	N	N
[mm] SIM focus pos	-0.782348	-0.7809083437167272	CCD S1 on	N	N
[mm] SIM defocus	0	0.001439871863259334	CCD S2 on	O1	Y
[mm] SIM translation stage pos	-225.840463	-225.848371962627	CCD S3 on	N	N
[mm] SIM translation stage offset	-7.752	-7.744081040302689	CCD S4 on	N	N
[s] Observation start time (MET)	451217511.184000	451216437.03396	CCD S5 on	N	N
Observation start date	2012-04-19T10:10:45	2012-04-19T09:53:57	Number of optional ACIS chips dropped	0	0
[s] Observation end time (MET)	451227511.184000	451227745.85956	On-chip summing requested	N	N
Observation end date	2012-04-19T12:57:25	2012-04-19T13:02:25	Subarray requested	NONE	NONE
Read mode	TIMED	TIMED	Alternating exposures requested	N	N
			[s] Primary exposure time	0.000000	3.1

2.3 Aspect



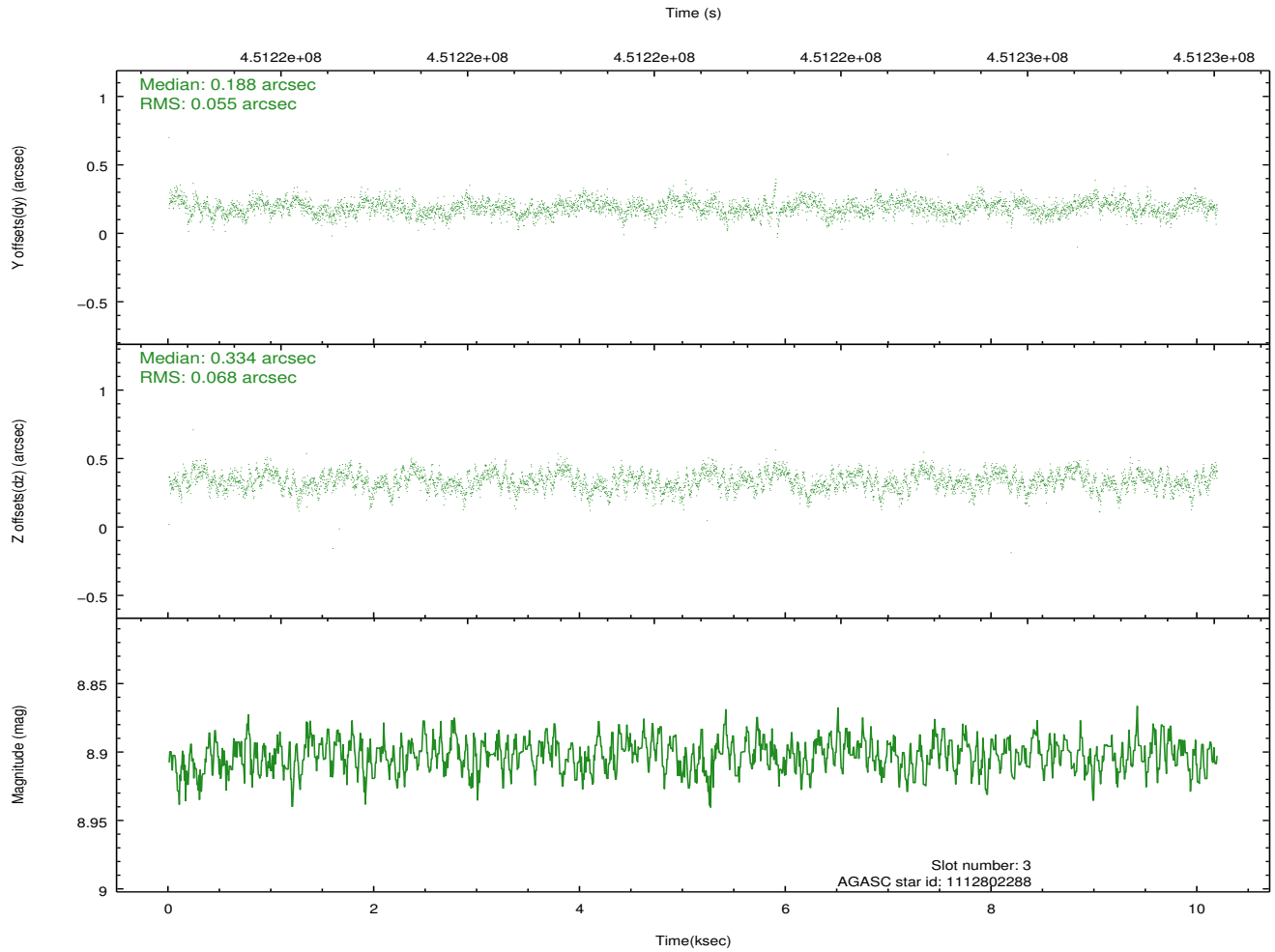
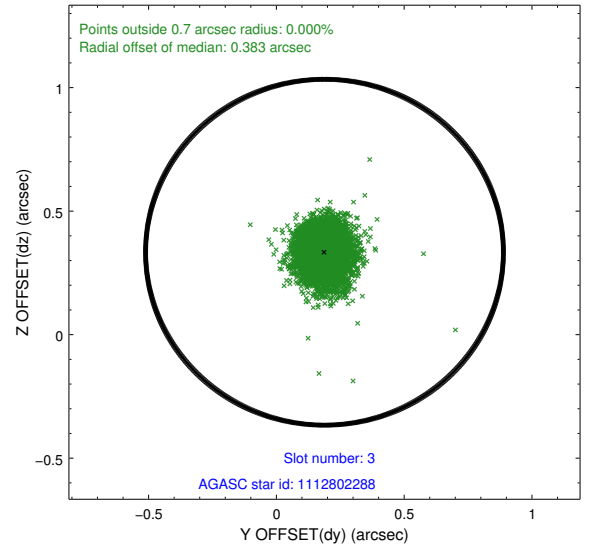
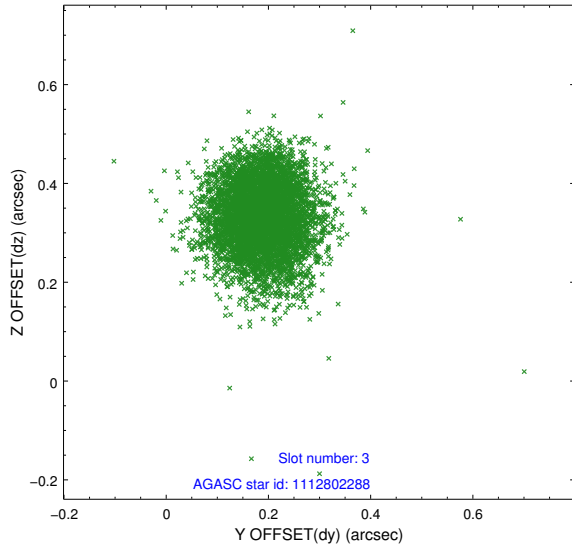


Slot Statistics

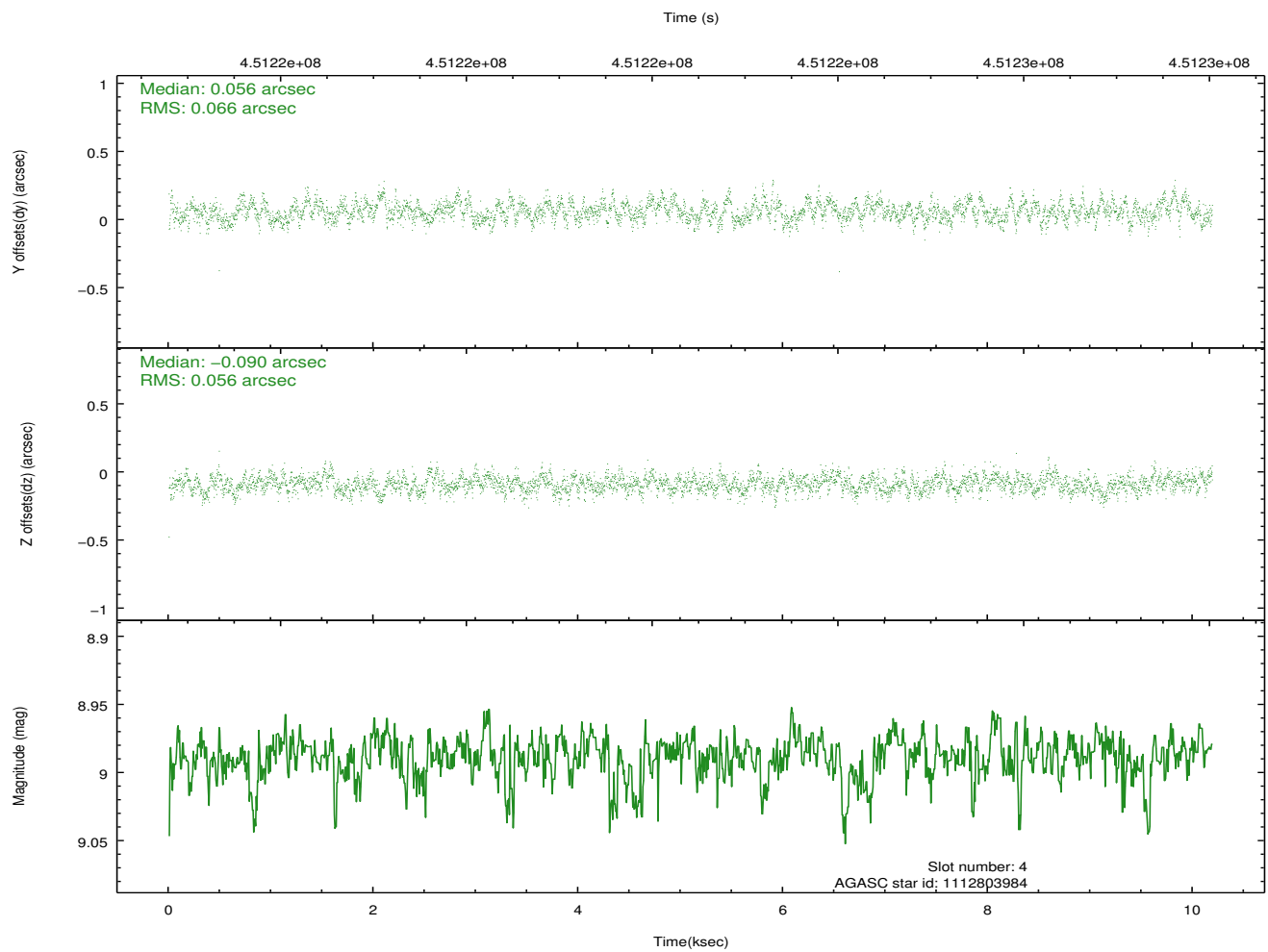
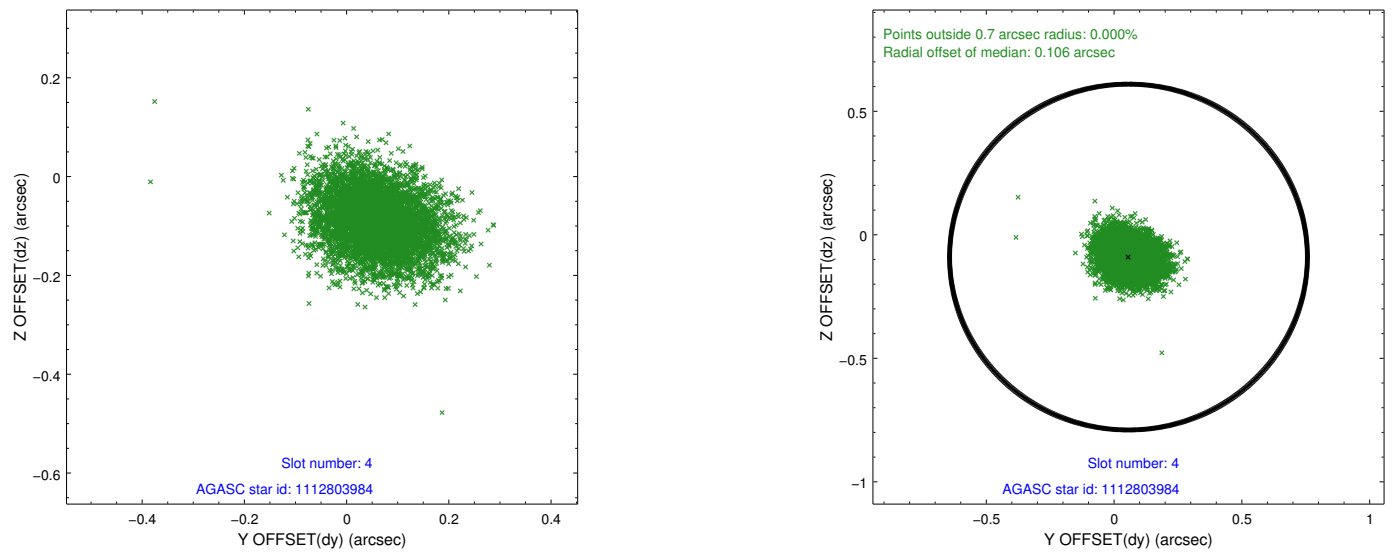
slot	status	id	mag	n_pts	med_dy	med_dz	dr1	dr2	ra	dec	mean_y	mean_z
0	FID	ACIS-I-1	7.19	2486	0.134	-0.081	0.019	0.030	0.000000	0.000000	929.33	-995.76
1	FID	ACIS-I-5	7.17	2486	-0.276	0.117	0.013	0.018	0.000000	0.000000	-1818.91	901.58
2	FID	ACIS-I-6	7.20	2486	0.050	0.037	0.013	0.019	0.000000	0.000000	394.21	1546.62
3	GUIDE	1112802288	8.90	4968	0.188	0.334	0.092	0.146	38.783550	-57.927509	-743.92	-1992.19
4	GUIDE	1112803984	8.99	4965	0.056	-0.090	0.092	0.148	39.571669	-59.015706	-1375.51	2148.26
5	GUIDE	1112804104	9.42	4936	-0.140	-0.065	0.117	0.191	38.441593	-58.686728	437.51	554.91
6	GUIDE	1112804792	8.93	4969	-0.063	-0.212	0.096	0.158	37.847759	-59.149060	1844.42	1973.27
7	GUIDE	1112810872	8.18	4969	-0.042	0.033	0.073	0.122	37.908186	-58.870664	1543.25	1010.87

2.4 Star Slots

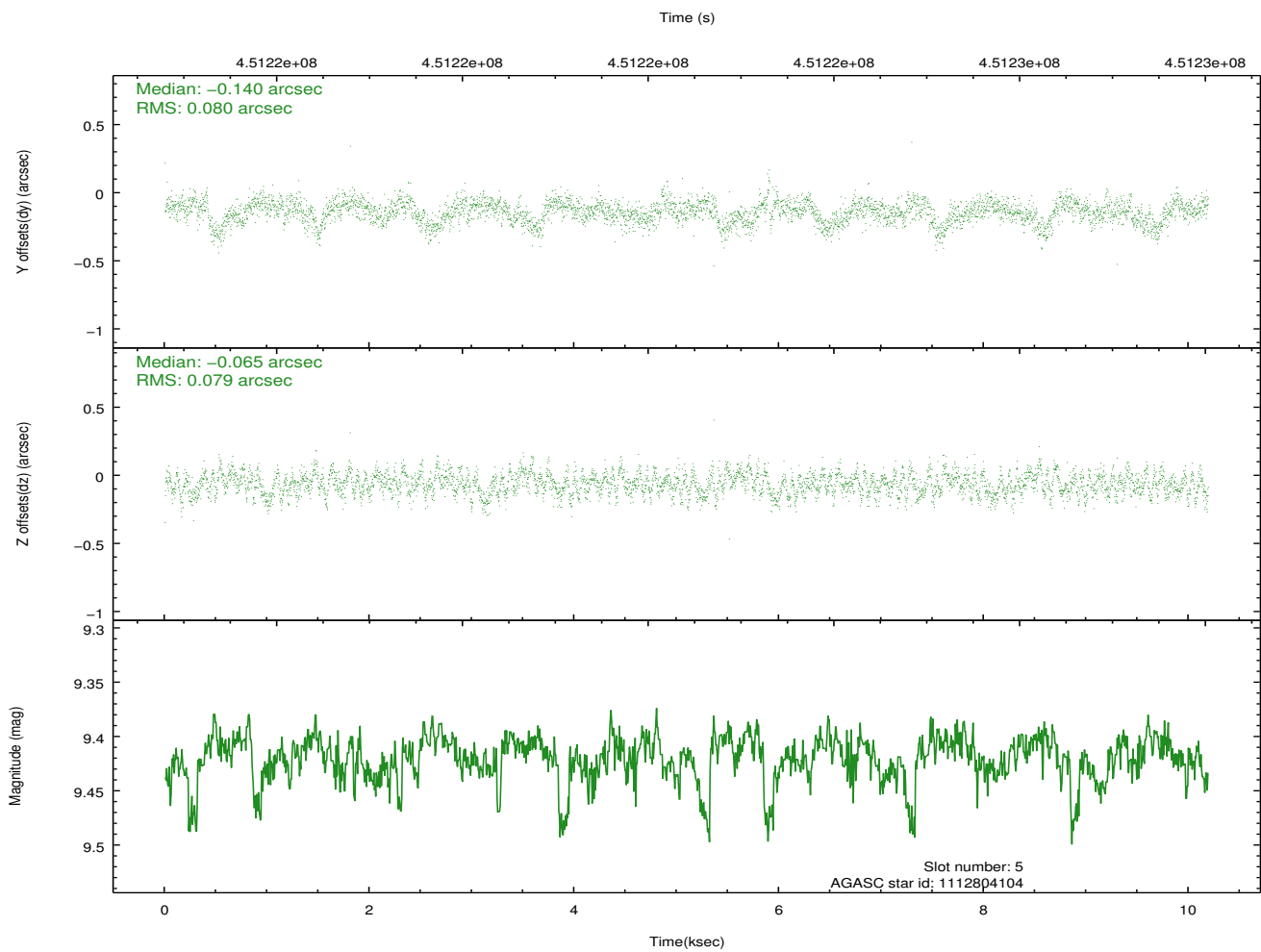
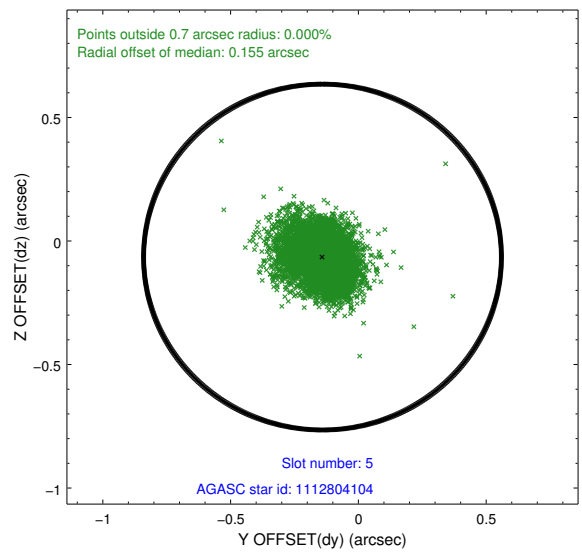
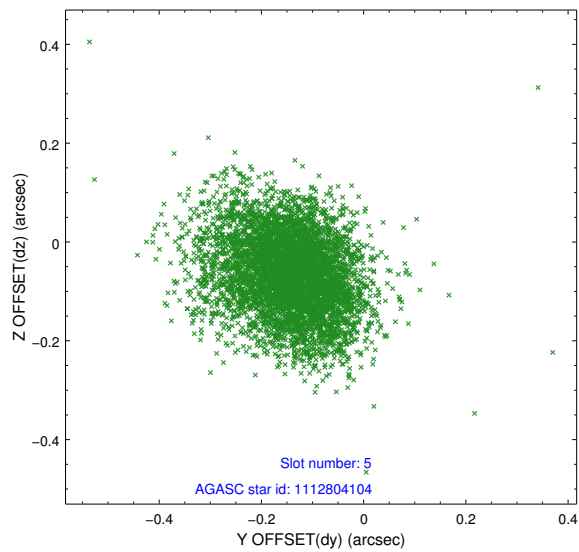
2.4.1 Slot 3



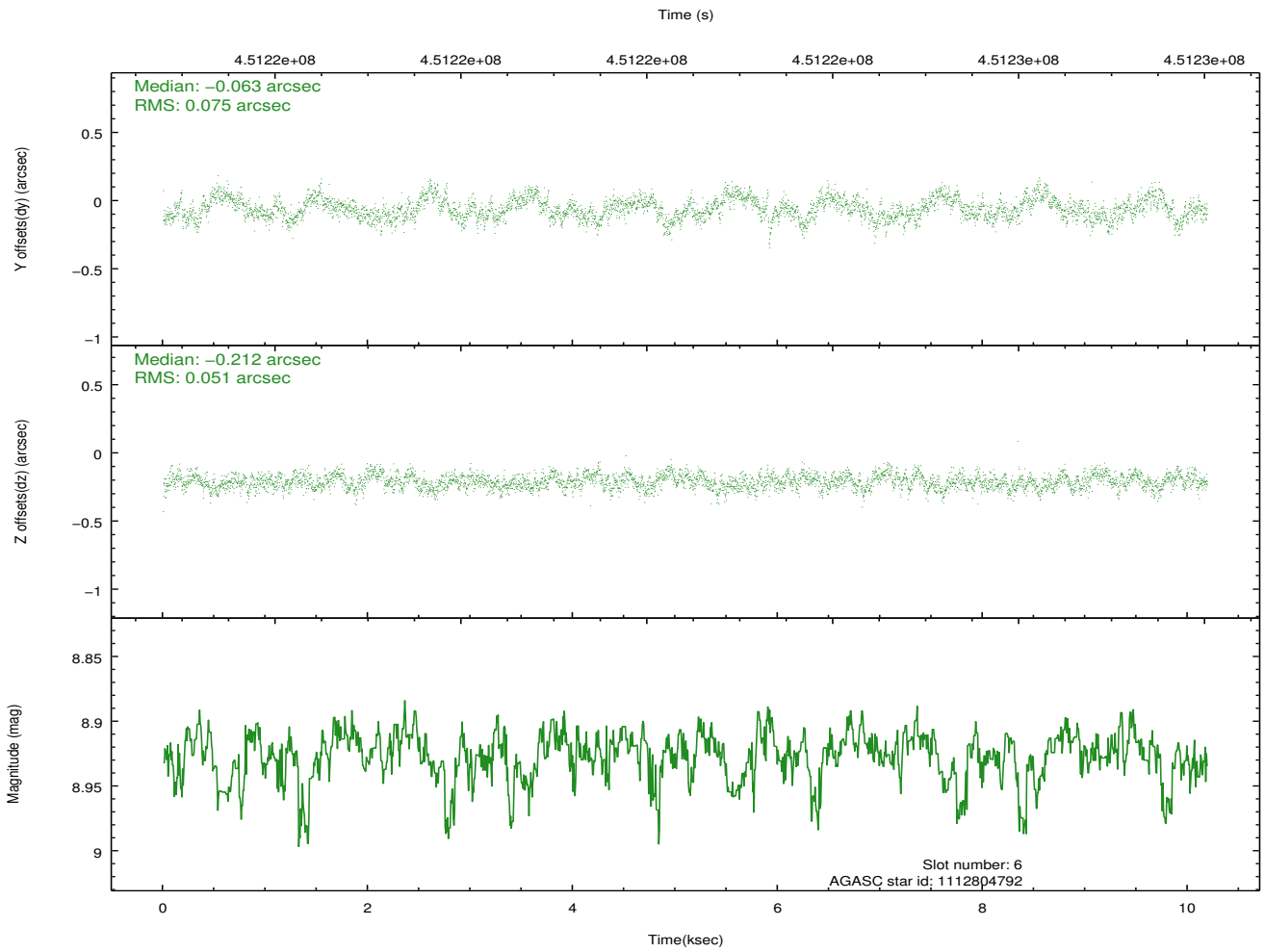
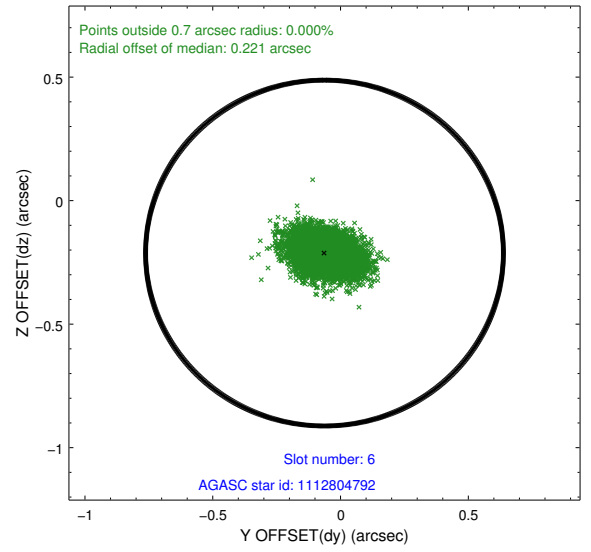
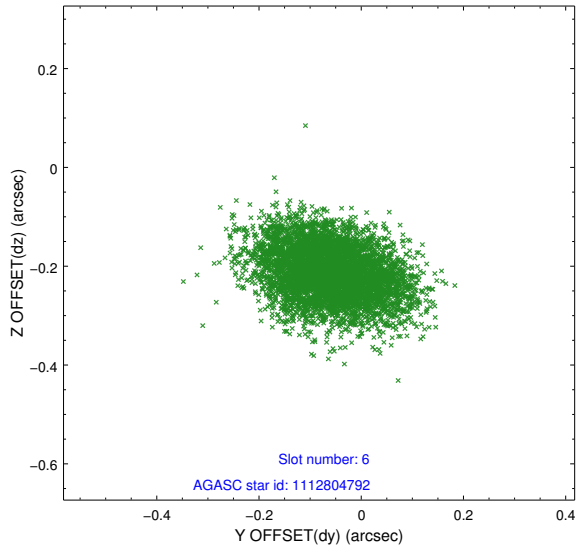
2.4.2 Slot 4



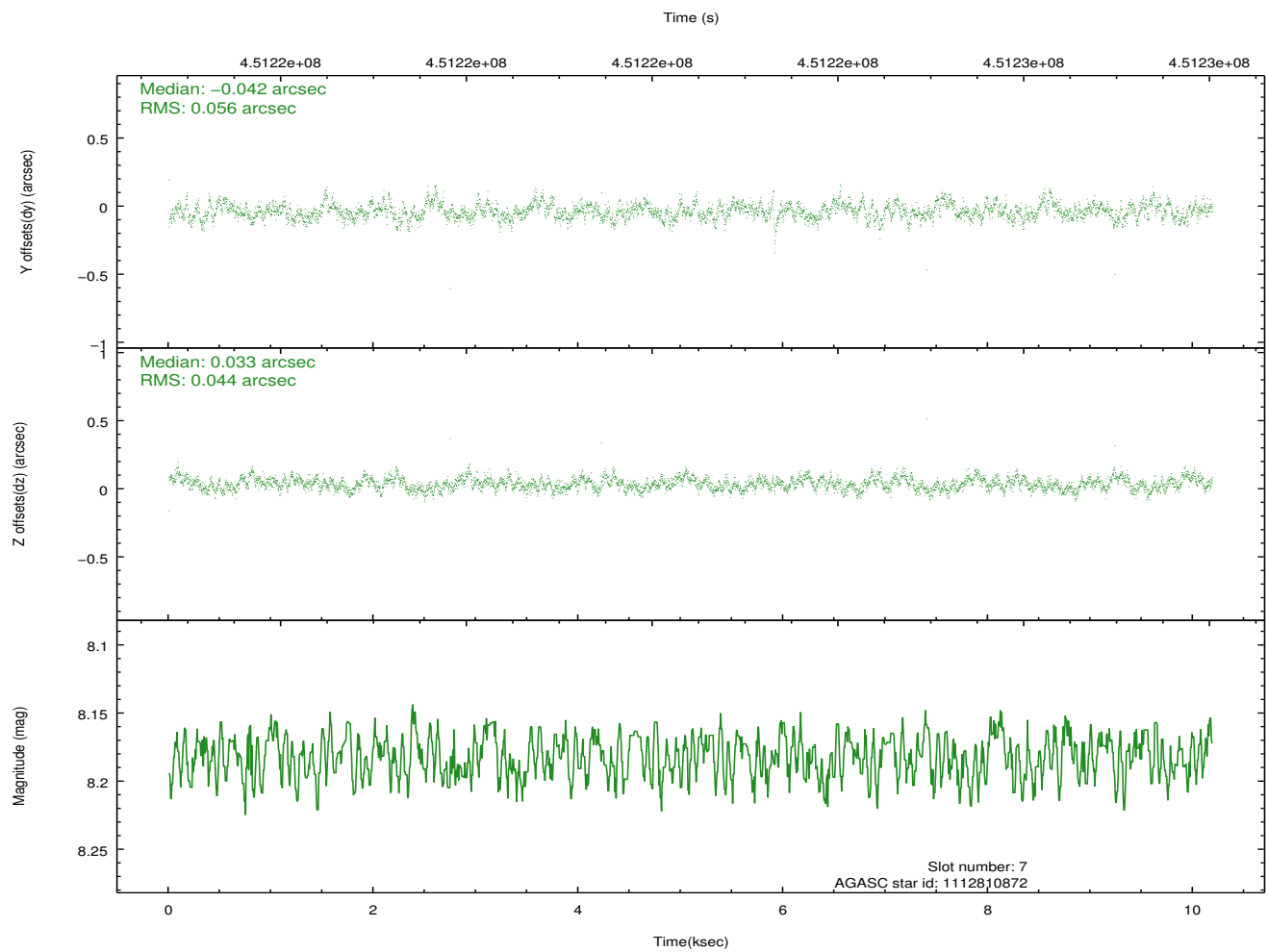
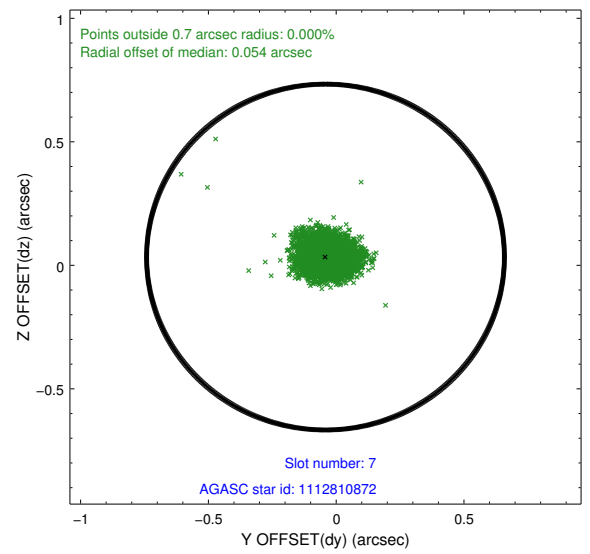
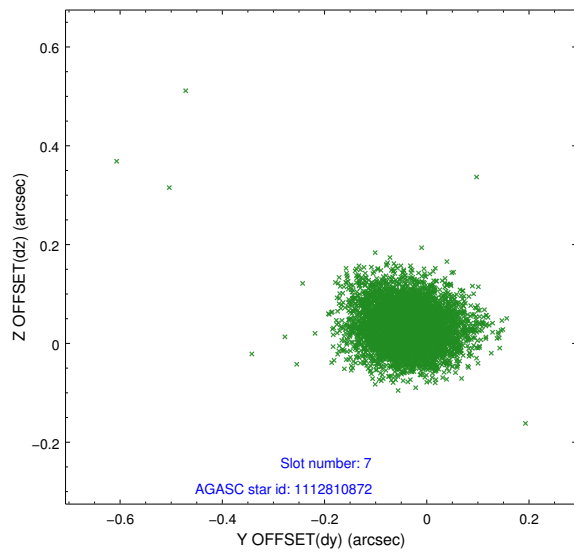
2.4.3 Slot 5



2.4.4 Slot 6

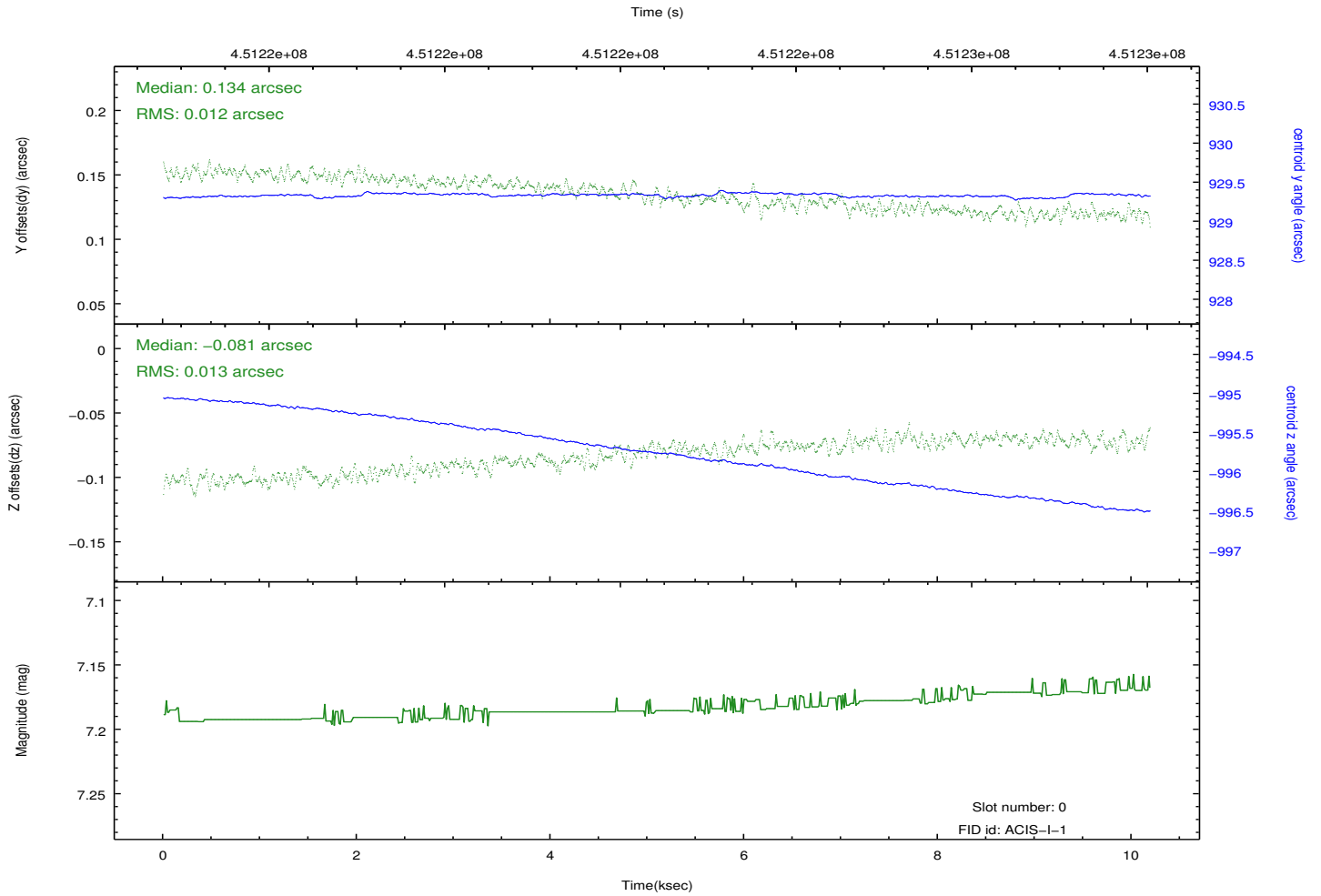
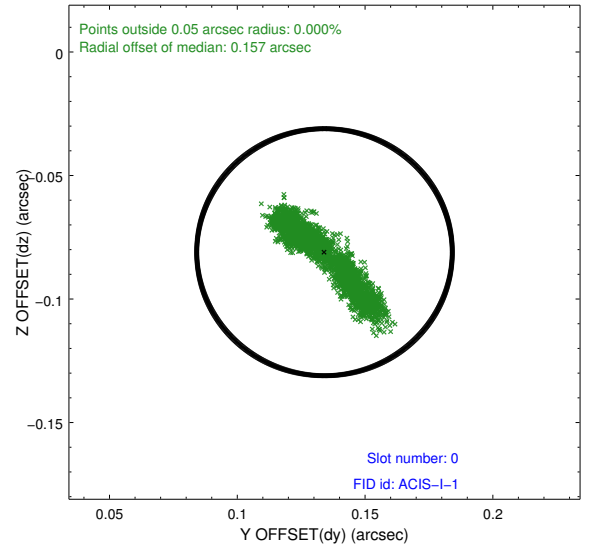
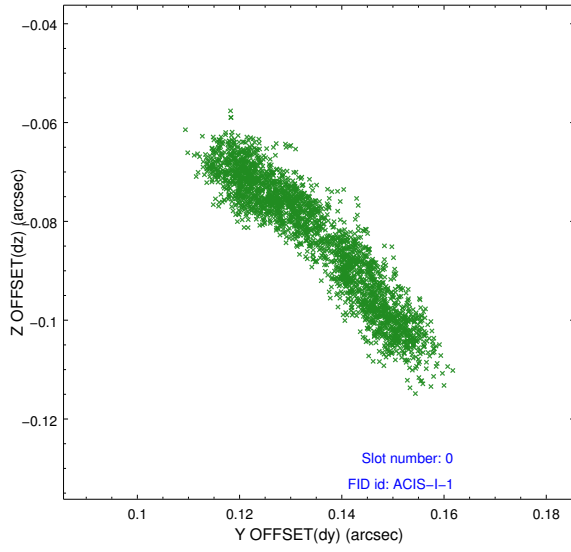


2.4.5 Slot 7

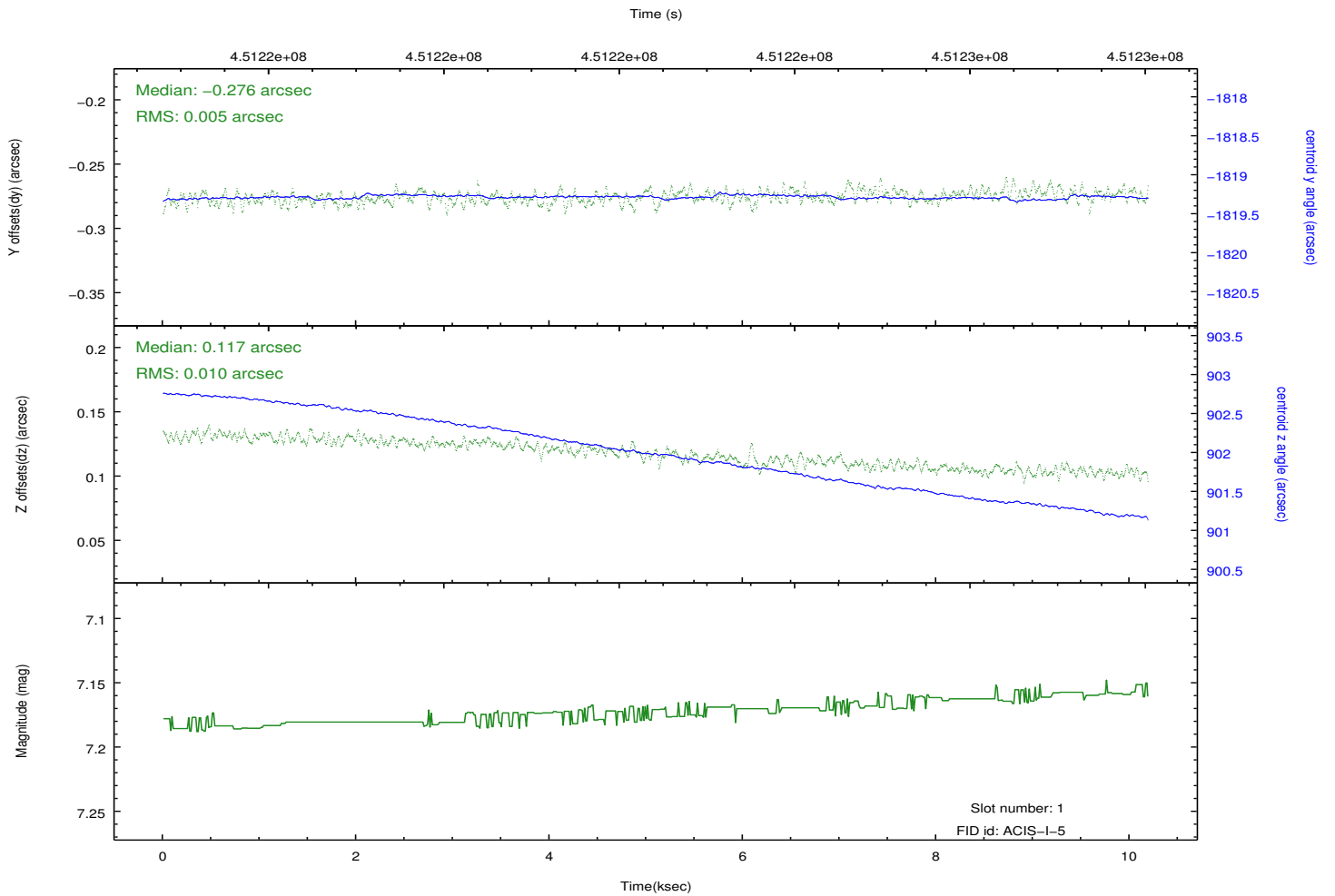
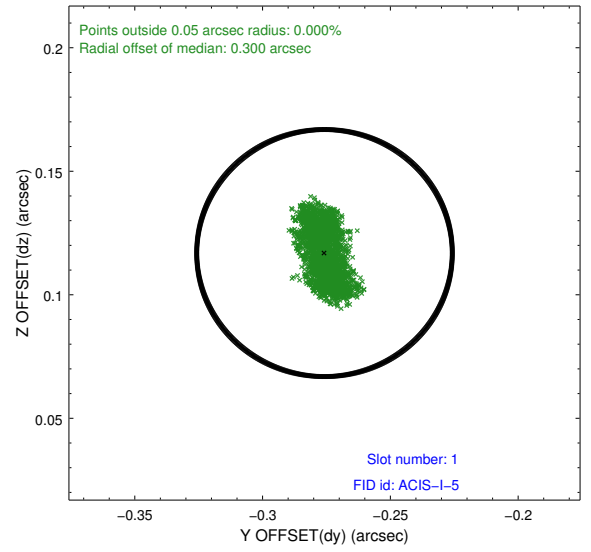
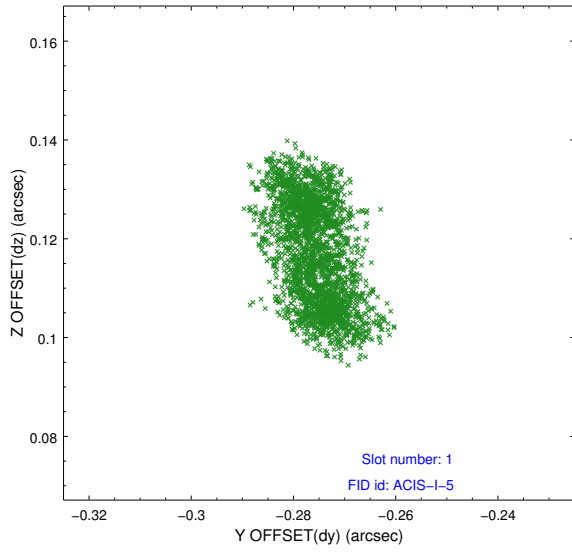


2.5 FID Slots

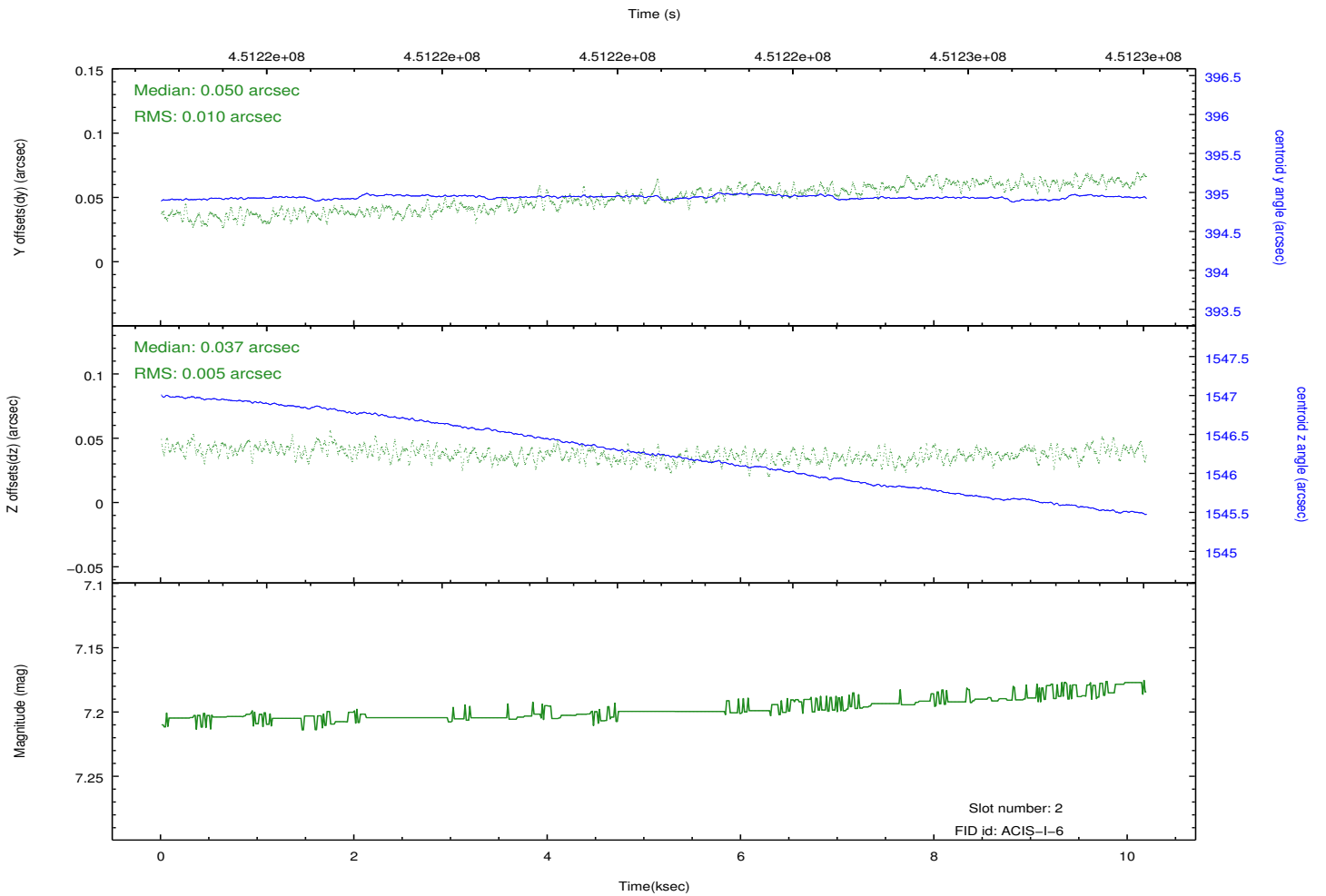
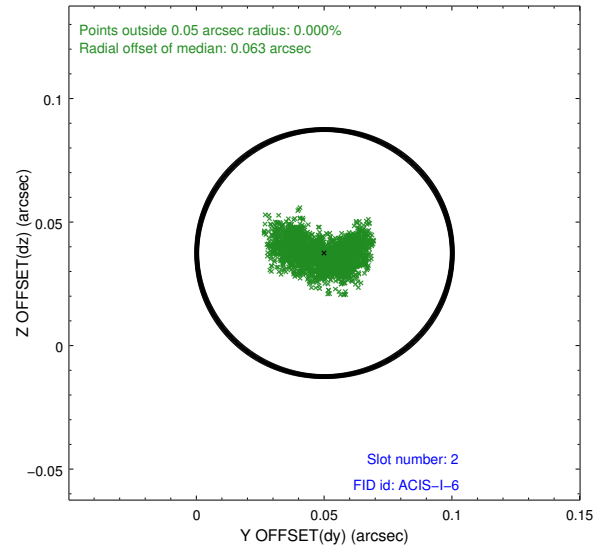
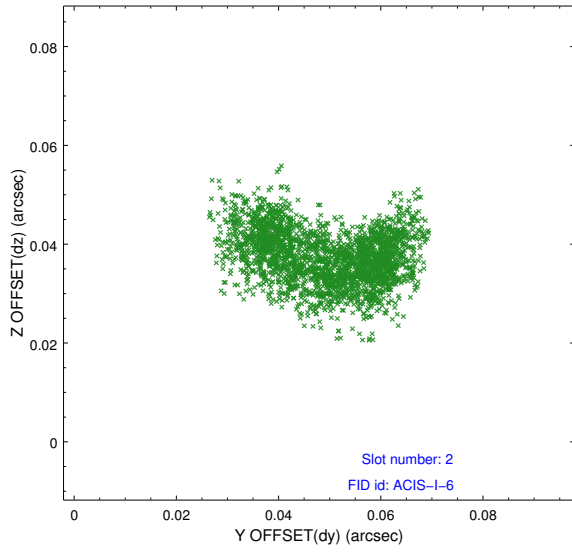
2.5.1 Slot 0



2.5.2 Slot 1



2.5.3 Slot 2



A Summary

A.1 Status

V&V Scientist	Beth Sundheim
V&V Date (YYYY-MM-DD)	2012.04.20
V&V Edition	1
V&V Disposition and Status	OK
V&V Charge Time	10.07810007751

A.2 Comments