

V&V Reference Report

L2 ASCDS Version : 8.4.3

Observation 13433 - L2 Version 3
Chandra X-Ray Center

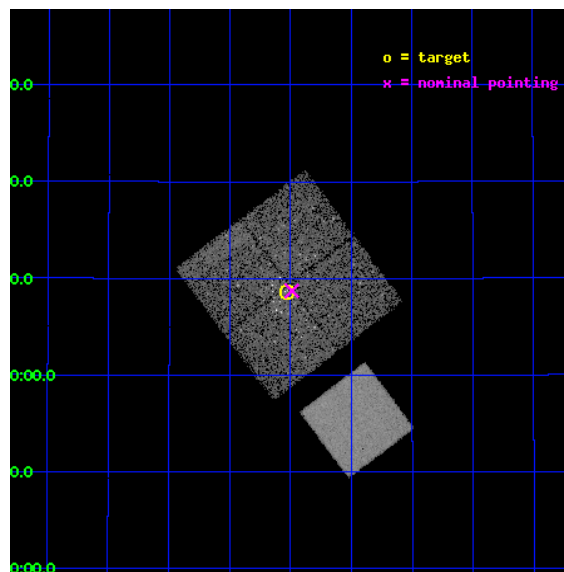
L2 Processing Date : Feb 26 2012

Contents

1	Front	2
2	OBI	3
2.1	OBI	3
2.1.1	Images	3
2.1.2	Bias	3
2.1.3	Parameters	4
2.1.4	Events	4
2.2	Compared Parameters	5
2.3	Aspect	6
2.4	Star Slots	9
2.4.1	Slot 3	9
2.4.2	Slot 4	10
2.4.3	Slot 5	11
2.4.4	Slot 6	12
2.4.5	Slot 7	13
2.5	FID Slots	14
2.5.1	Slot 0	14
2.5.2	Slot 1	15
2.5.3	Slot 2	16
A	Summary	17
A.1	Status	17
A.2	Comments	17

1 Front

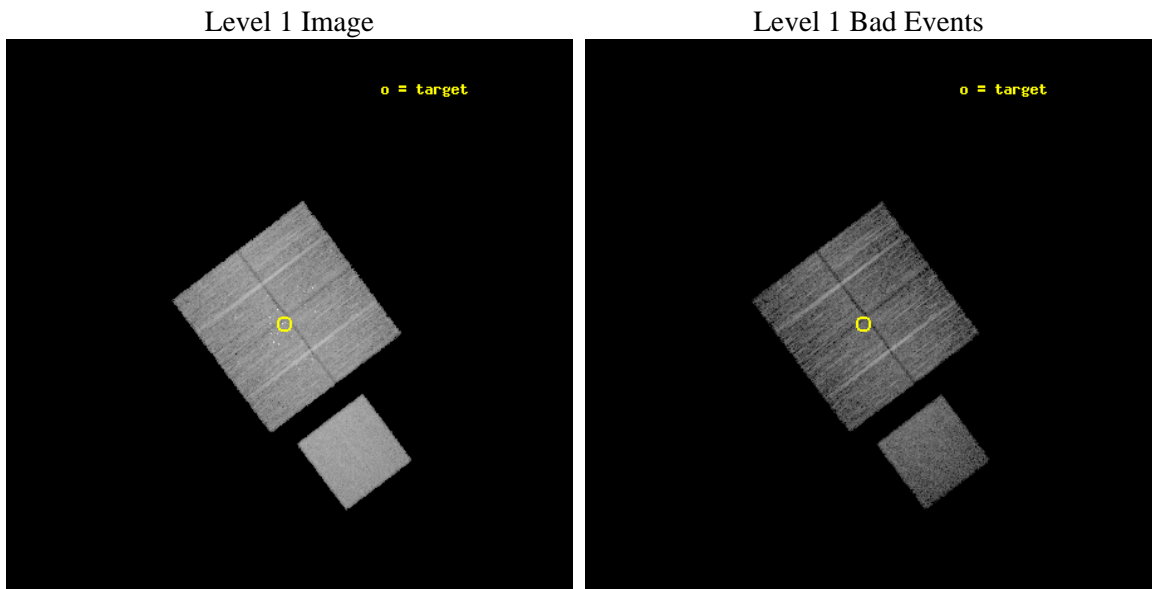
seq_num	200755	Sequence number
obs_id	13433	Observation id
title	Connecting Young Stellar Object Variability Across the Great Observatories: A Combined Spitzer and Chandra Study	Proposal title
observer	Dr. Kevin Flaherty	Principal investigator
object	IC 348	Source name
dtcycle	0	
cycle	P	events from which exps? Prim/Second/Both
ra_targ	56.13125	Observer's specified target RA [deg]
dec_targ	32.142694	Observer's specified target Dec [deg]
ra_nom	56.122274308975	Nominal RA [deg]
dec_nom	32.145430825828	Nominal Dec [deg]
roll_nom	143.09997329012	Nominal Roll [deg]
revision	3	Processing version of data
ontime	10932.911259592	Sum of GTIs [s]
livetime	10790.064725293	Livetime [s]
ontime0	10929.647179246	Sum of GTIs [s]
ontime1	10932.829179585	Sum of GTIs [s]
ontime2	10932.870219588	Sum of GTIs [s]
ontime3	10932.911259592	Sum of GTIs [s]
ontime7	10932.952299595	Sum of GTIs [s]
l2events	76253	Number of level 2 events



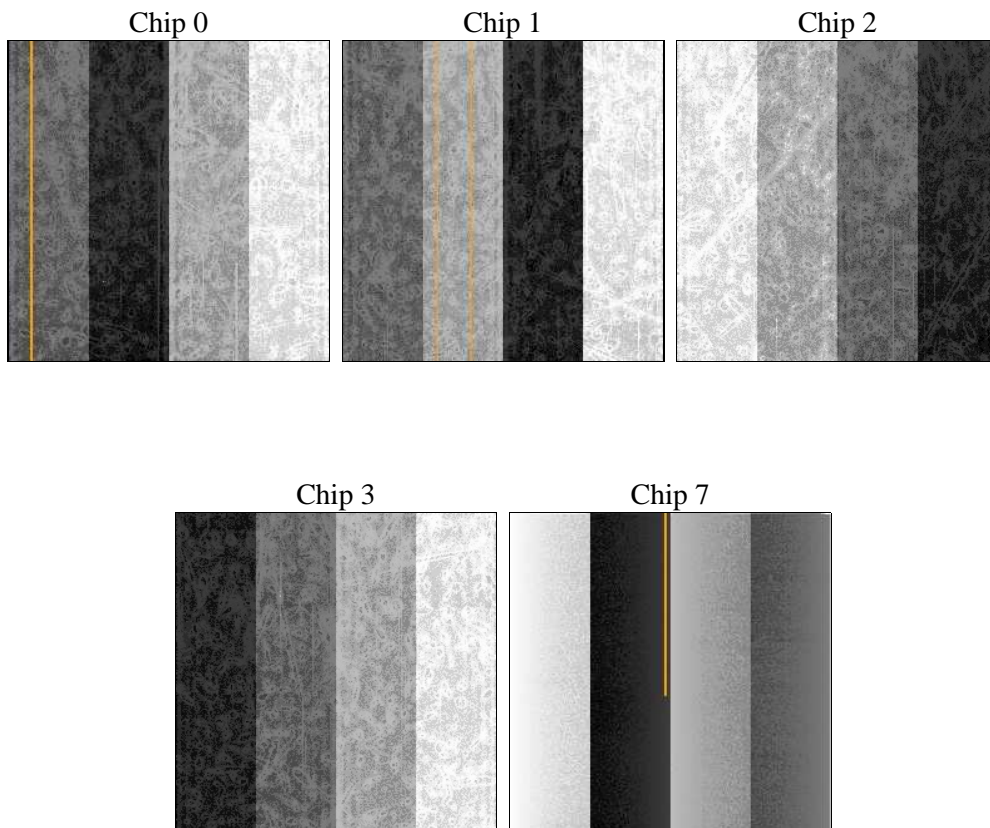
2 OBI

2.1 OBI

2.1.1 Images



2.1.2 Bias



2.1.3 Parameters

obi_num	0	Obi number	sched_exp_time	10886.966000	[s] Scheduled observation exposure time
ascdsver	8.4.3	Processing system revision	ontime	10932.911259592	Sum of GTIs [s]
caldsver	4.4.8	 	ontime0	10929.647179246	Sum of GTIs [s]
date	2012-02-27T01:38:57	Date and time of file creation	ontime1	10932.829179585	Sum of GTIs [s]
revision	3	Processing version of data	ontime2	10932.870219588	Sum of GTIs [s]
			ontime3	10932.911259592	Sum of GTIs [s]
			ontime7	10932.952299595	Sum of GTIs [s]
			l1events	361346	Number of level 1 events

2.1.4 Events

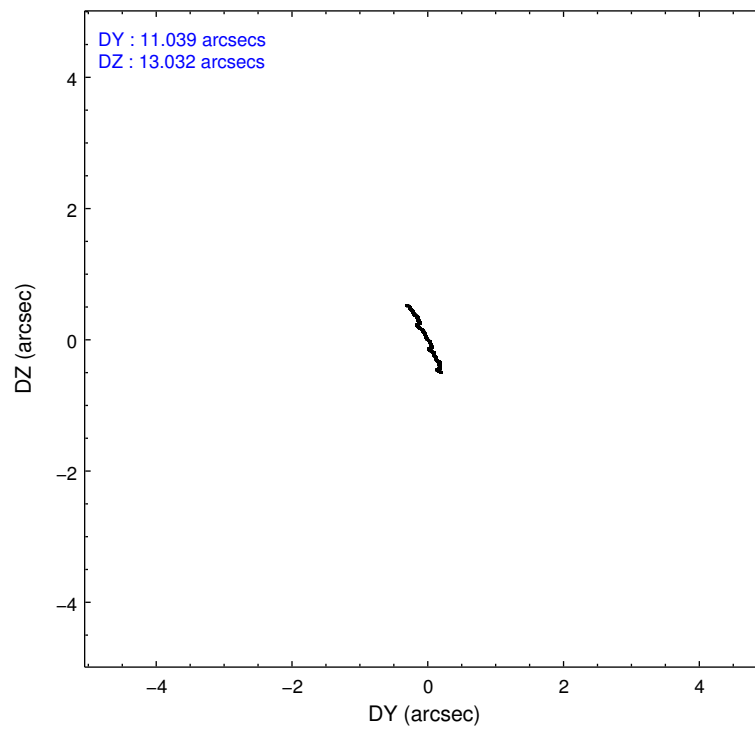
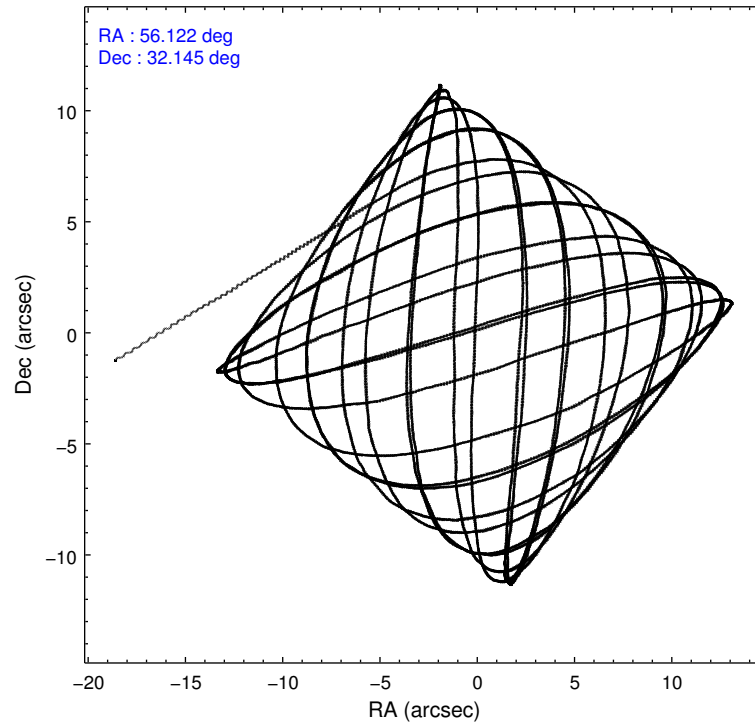
	ccd 0	ccd 1	ccd 2	ccd 3	ccd 7
level 1 events	65445	67269	68480	70081	90071
rejected events	55387	55759	59399	58698	49131
rejected %	84%	82%	86%	83%	54%

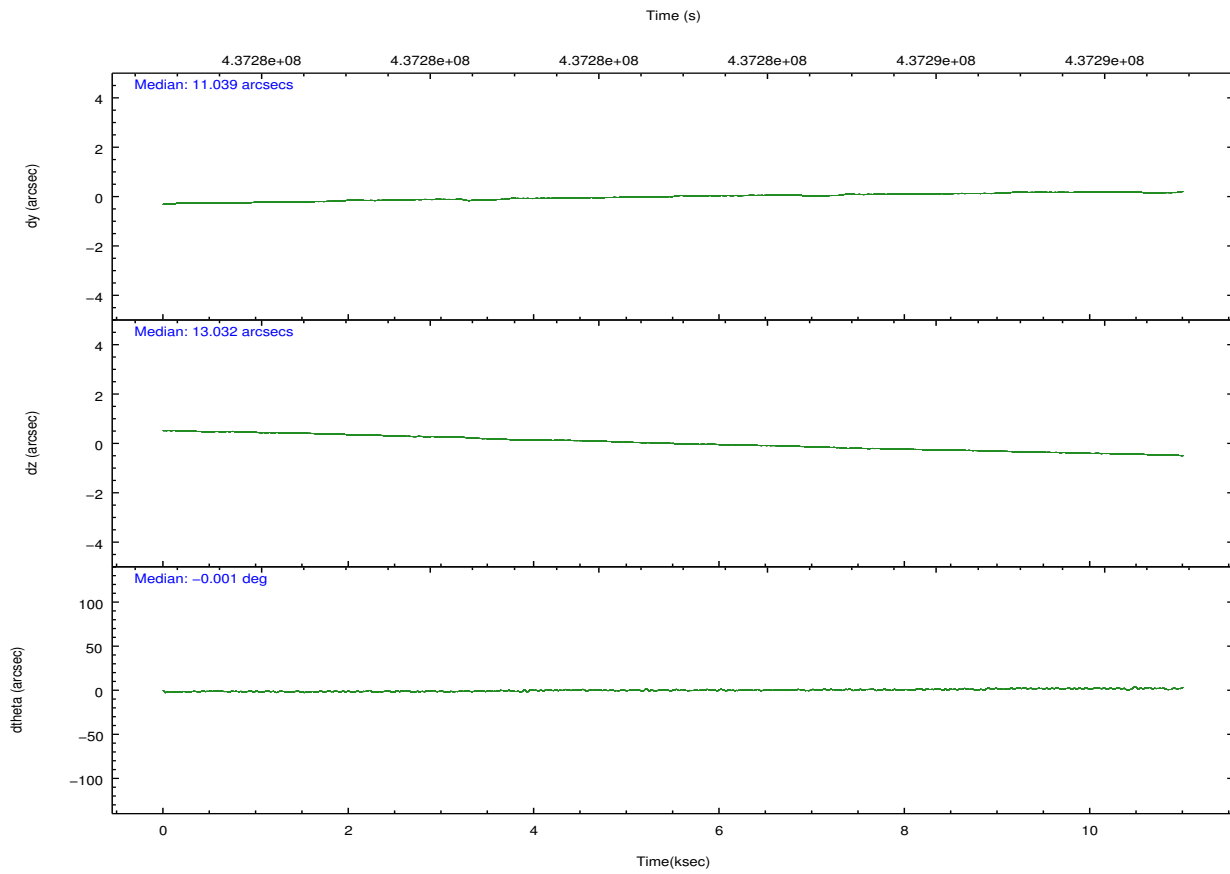
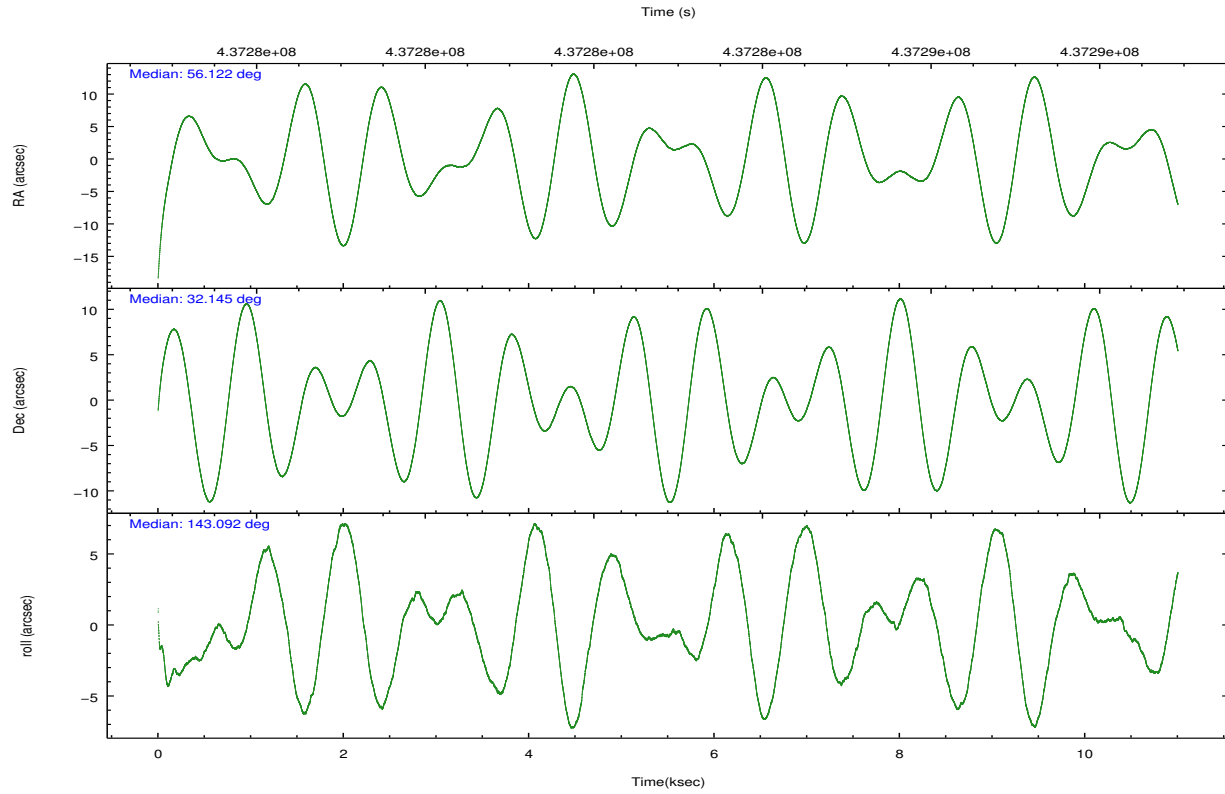
	ccd 0	ccd 1	ccd 2	ccd 3	ccd 7
grade 0 events	4447	5317	3818	5870	3732
	6%	7%	5%	8%	4%
grade 1 events	48	71	34	87	102
	0%	0%	0%	0%	0%
grade 2 events	2186	2447	2037	2045	8119
	3%	3%	2%	2%	9%
grade 3 events	919	962	850	936	3603
	1%	1%	1%	1%	4%
grade 4 events	887	904	811	888	3545
	1%	1%	1%	1%	3%
grade 5 events	3031	3199	2898	3426	9319
	4%	4%	4%	4%	10%
grade 6 events	1621	1883	1567	1646	21952
	2%	2%	2%	2%	24%
grade 7 events	52306	52486	56465	55183	39699
	79%	78%	82%	78%	44%

2.2 Compared Parameters

Parameter	Planned	Actual	Parameter	Planned	Actual
Instrument	ACIS	ACIS	Obspar format version number	7	7
Detector	ACIS-01237	ACIS-01237	Obspar file type	PREDICTED	ACTUAL
Grating	NONE	NONE	Obspar update status	NONE	UPDATED
Data mode	VFAINT	VFAINT	CCD I0 on	Y	Y
Observation mode	POINTING	POINTING	CCD I1 on	Y	Y
[deg] Pointing RA	56.154510	56.12227430897538	CCD I2 on	Y	Y
[deg] Pointing Dec	32.142215	32.14543082582829	CCD I3 on	Y	Y
[deg] Pointing Roll	142.874138	143.0999732901232	CCD S0 on	N	N
[mm] SIM focus pos	-0.782348	-0.7809083437167272	CCD S1 on	N	N
[mm] SIM defocus	0	0.001439871863259334	CCD S2 on	N	N
[mm] SIM translation stage pos	-233.592463	-233.5874344608287	CCD S3 on	O1	Y
[mm] SIM translation stage offset	0	-0.005018542100998502	CCD S4 on	N	N
[s] Observation start time (MET)	437277494.184000	437276189.78417	CCD S5 on	N	N
Observation start date	2011-11-10T01:57:08	2011-11-10T01:36:29	Number of optional ACIS chips dropped	0	0
[s] Observation end time (MET)	437288381.184000	437288618.42232	On-chip summing requested	N	N
Observation end date	2011-11-10T04:58:35	2011-11-10T05:03:38	Subarray requested	NONE	NONE
Read mode	TIMED	TIMED	Alternating exposures requested	N	N
			[s] Primary exposure time	0.000000	3.1

2.3 Aspect



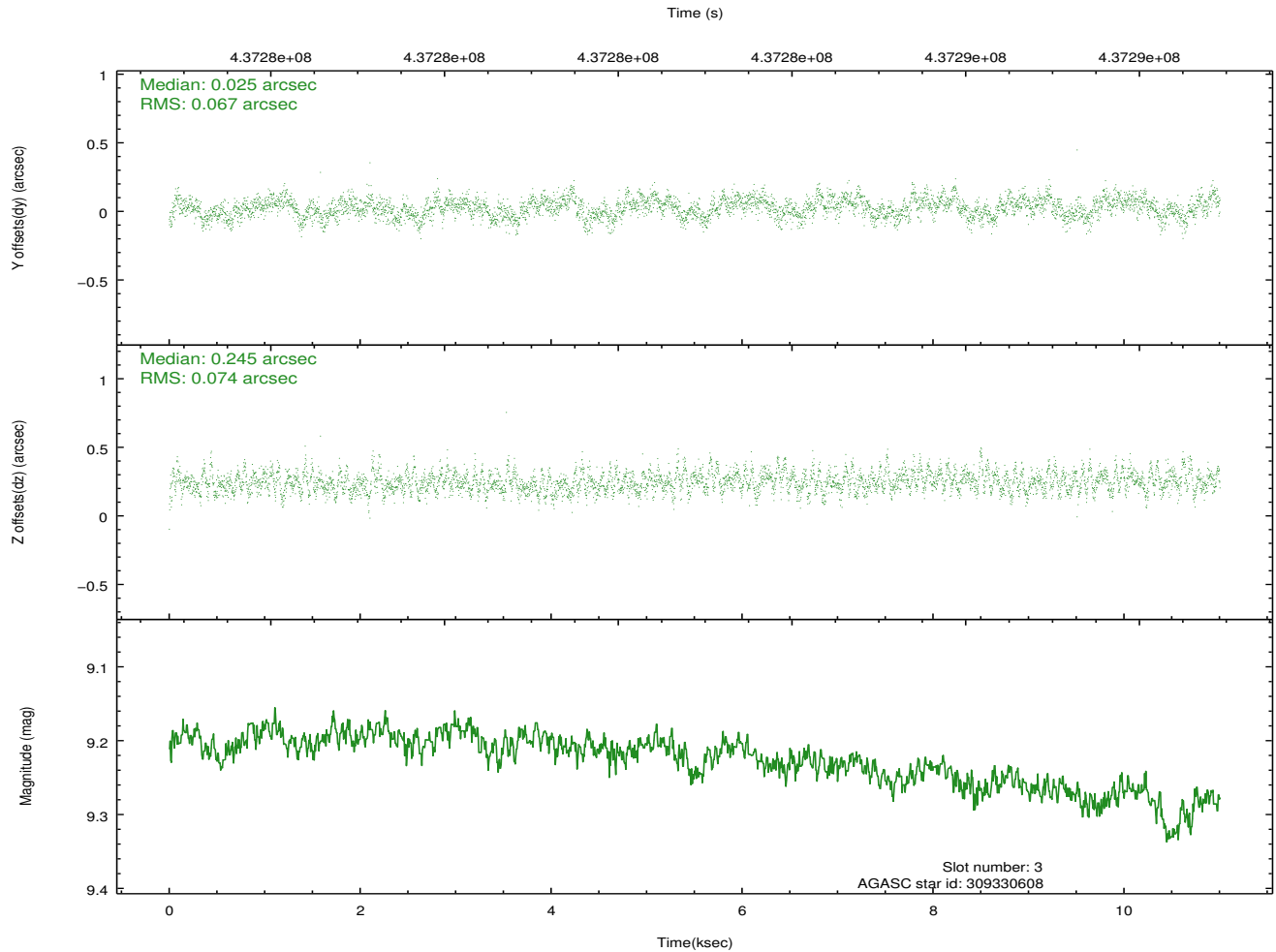
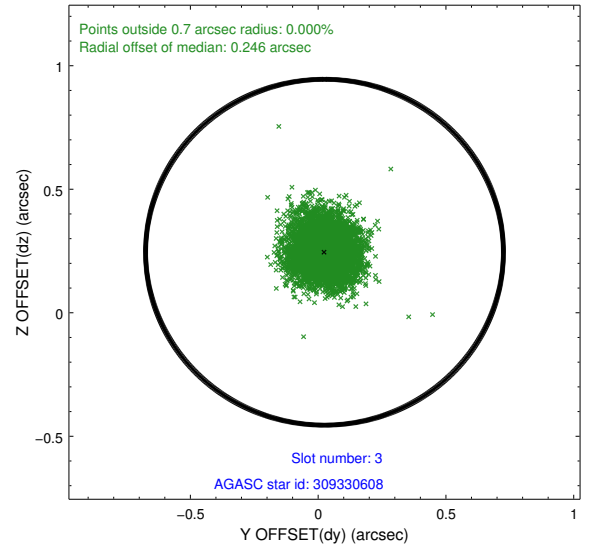
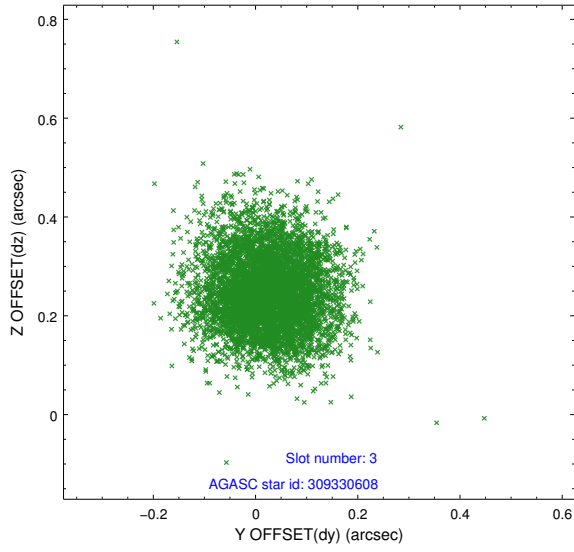


Slot Statistics

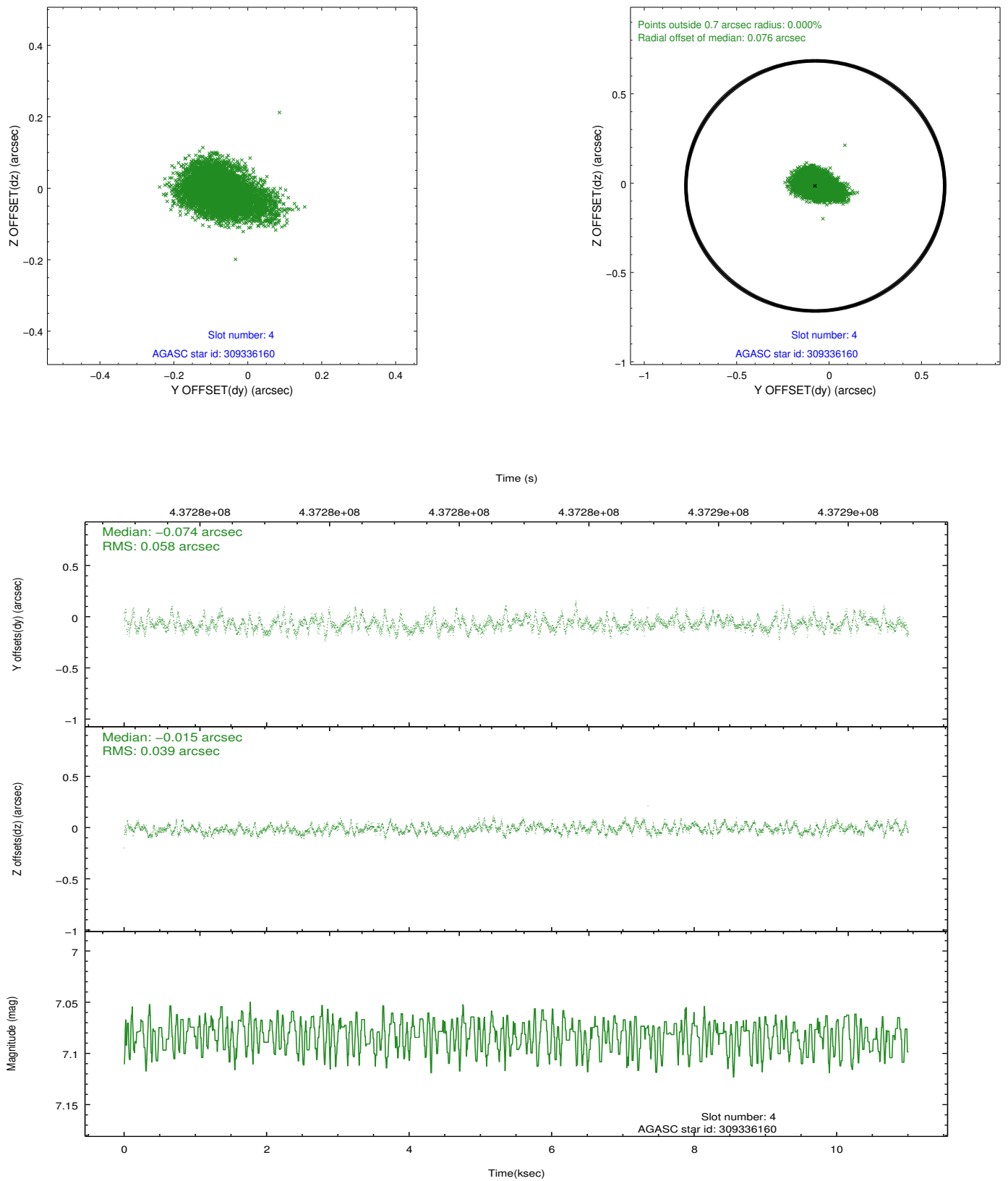
slot	status	id	mag	n_pts	med_dy	med_dz	dr1	dr2	ra	dec	mean_y	mean_z
0	FID	ACIS-I-1	6.97	2684	0.017	-0.004	0.008	0.014	0.000000	0.000000	928.55	-836.61
1	FID	ACIS-I-4	6.92	2684	0.128	0.018	0.008	0.014	0.000000	0.000000	2149.00	1062.96
2	FID	ACIS-I-5	6.95	2685	-0.243	0.057	0.009	0.015	0.000000	0.000000	-1819.08	1061.45
3	GUIDE	309330608	9.22	5363	0.025	0.245	0.107	0.170	56.696267	32.605248	-300.48	-2323.23
4	GUIDE	309336160	7.08	5367	-0.074	-0.015	0.073	0.124	56.670296	32.290187	-927.45	-1375.38
5	GUIDE	308674680	8.85	5365	0.016	-0.295	0.080	0.131	55.747345	31.652644	-67.76	2155.34
6	GUIDE	309205288	9.20	5360	0.055	0.015	0.107	0.174	55.920876	32.625581	1615.78	-959.27
7	GUIDE	309201336	9.46	5302	-0.024	0.047	0.098	0.163	55.980135	32.629910	1482.12	-1080.66

2.4 Star Slots

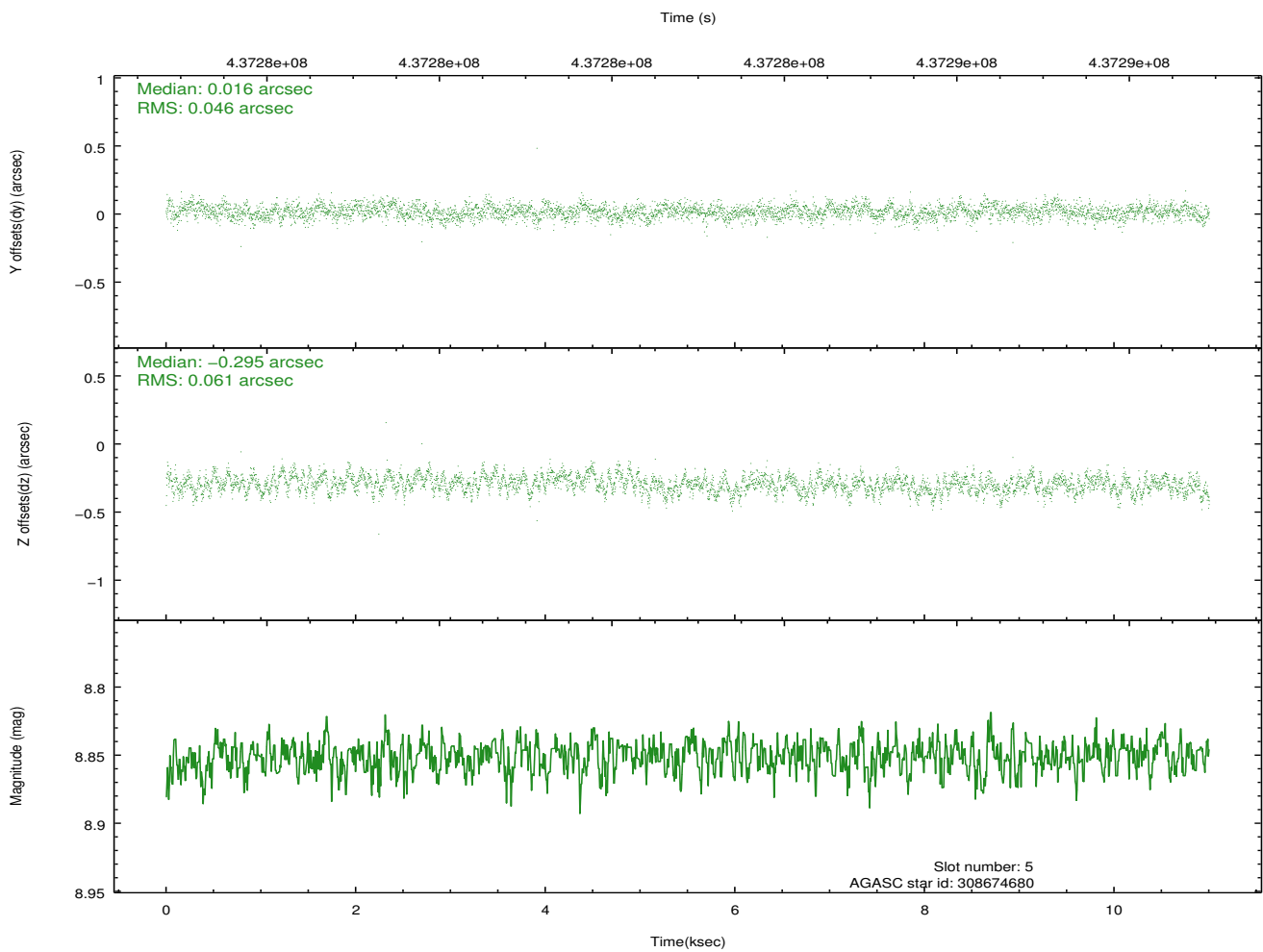
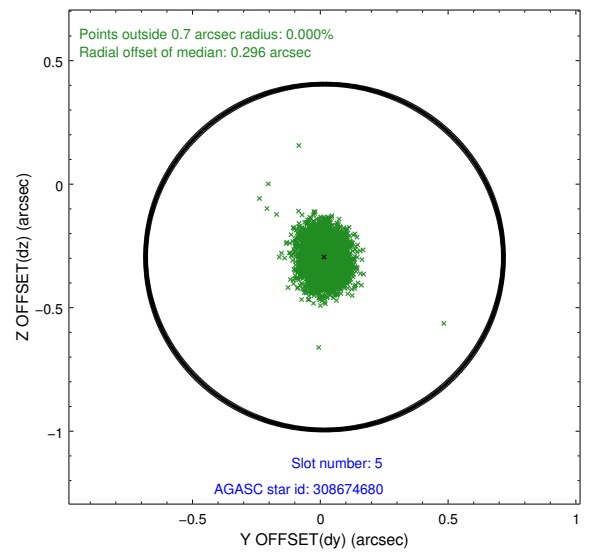
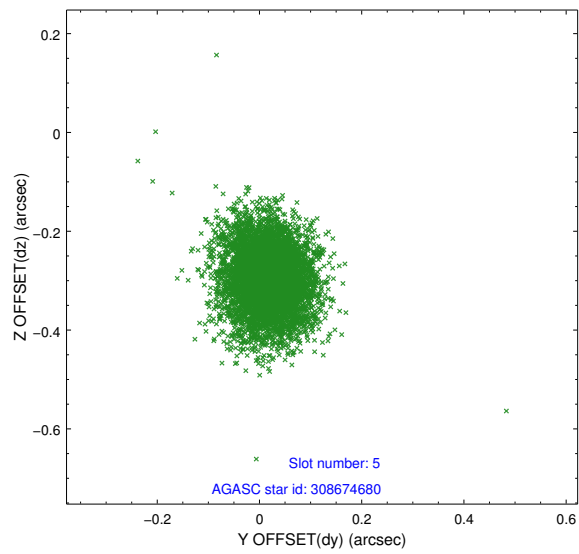
2.4.1 Slot 3



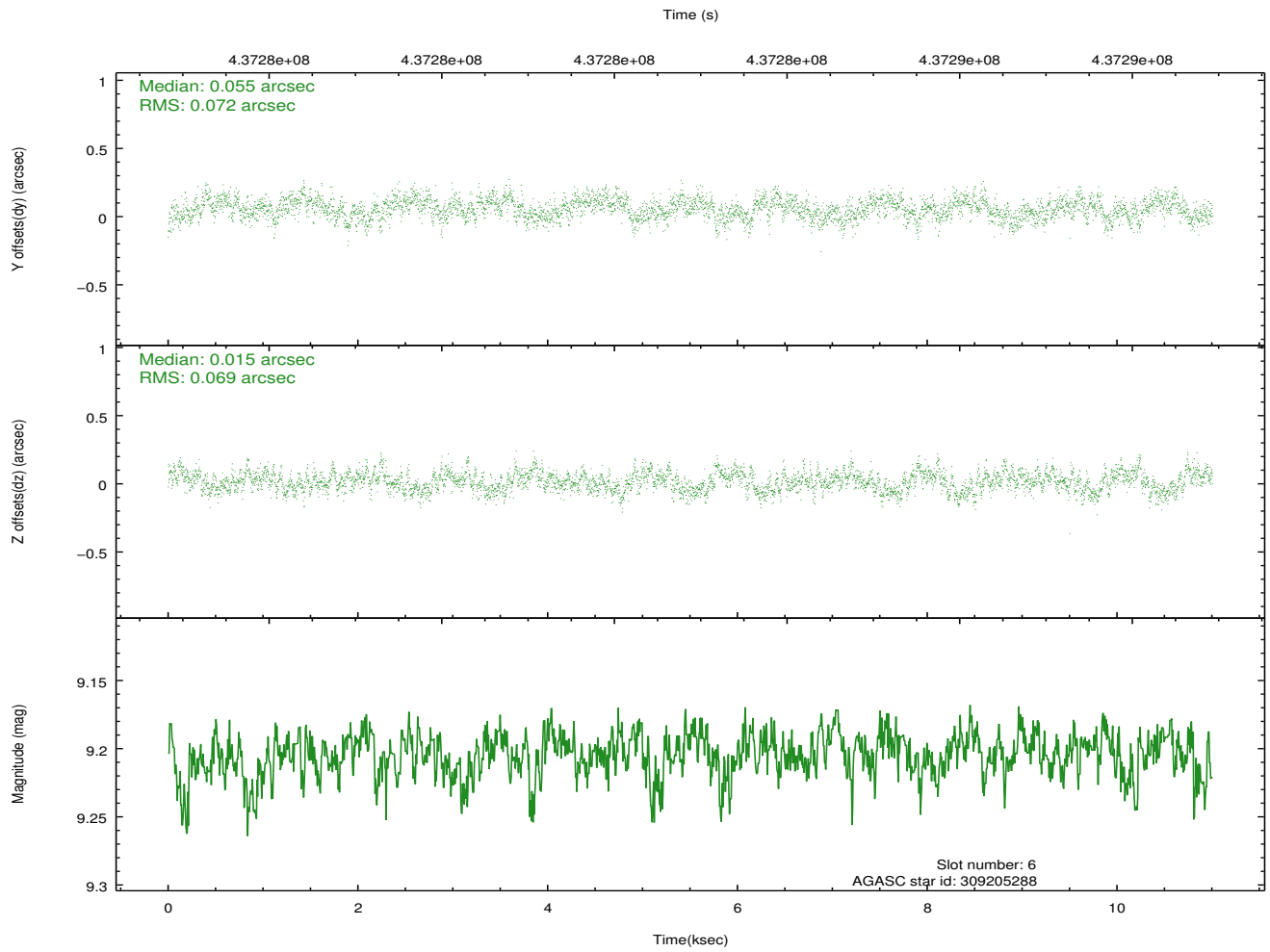
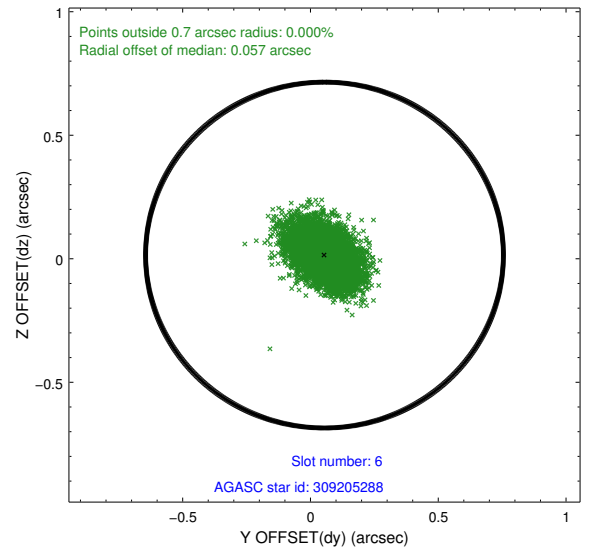
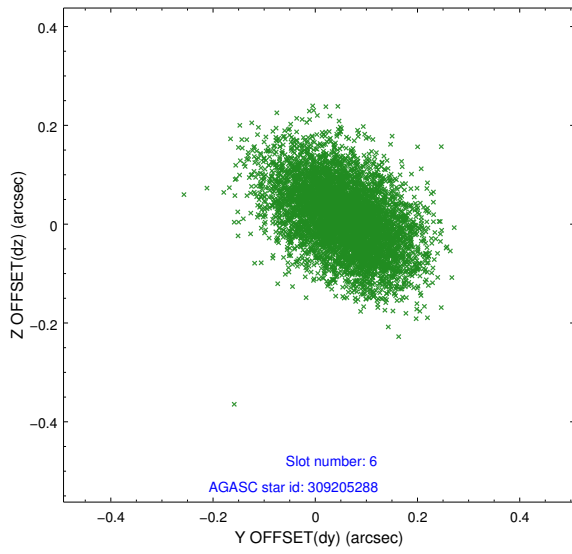
2.4.2 Slot 4



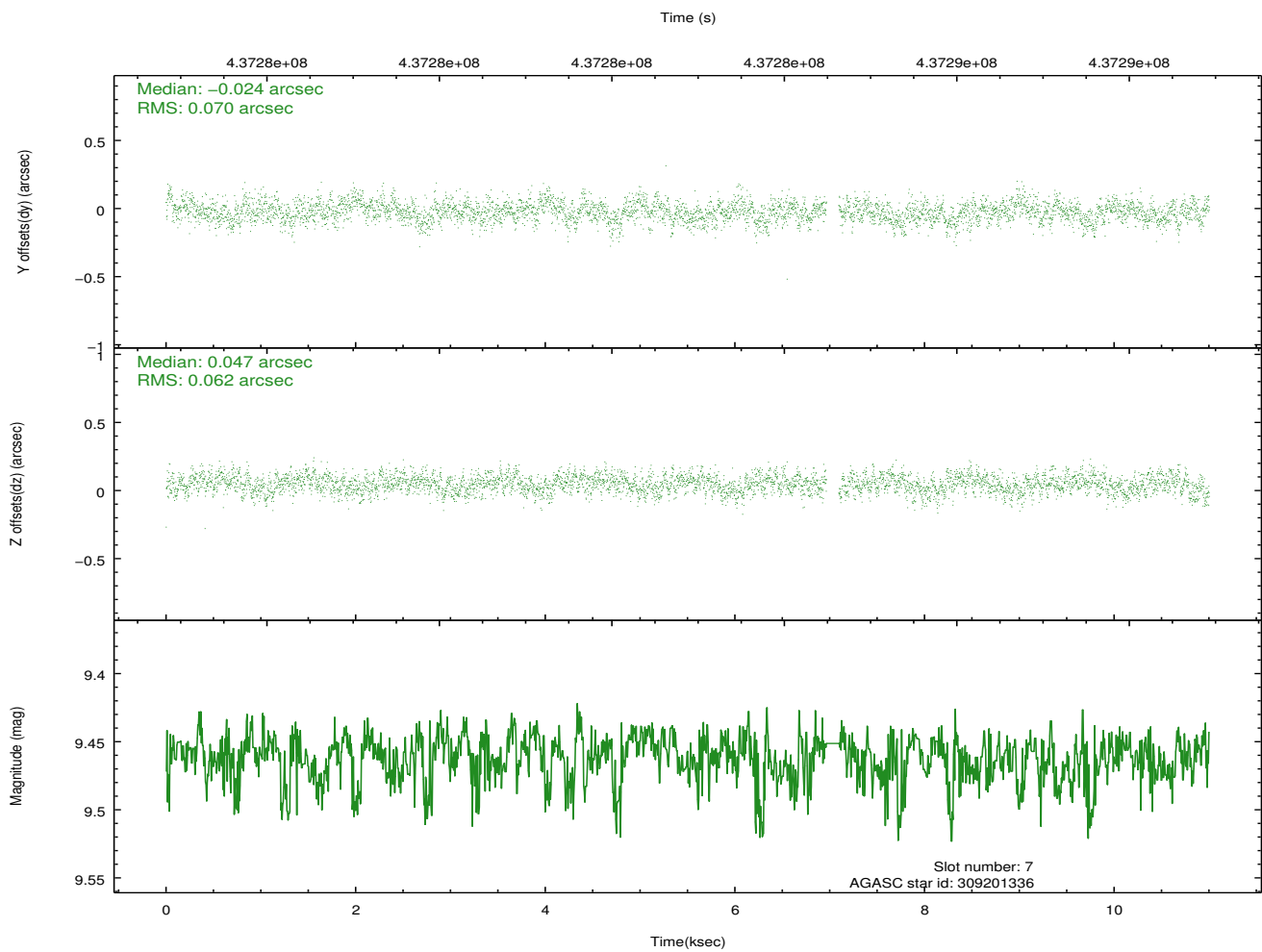
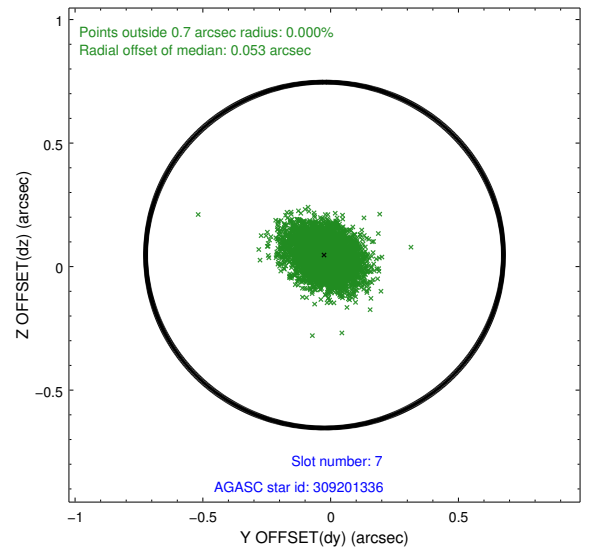
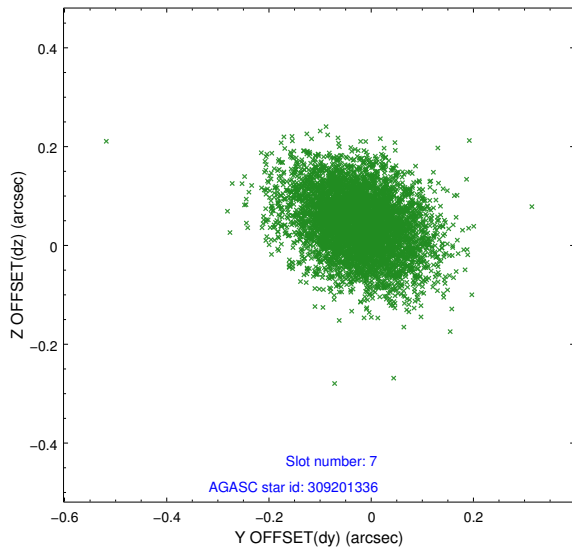
2.4.3 Slot 5



2.4.4 Slot 6

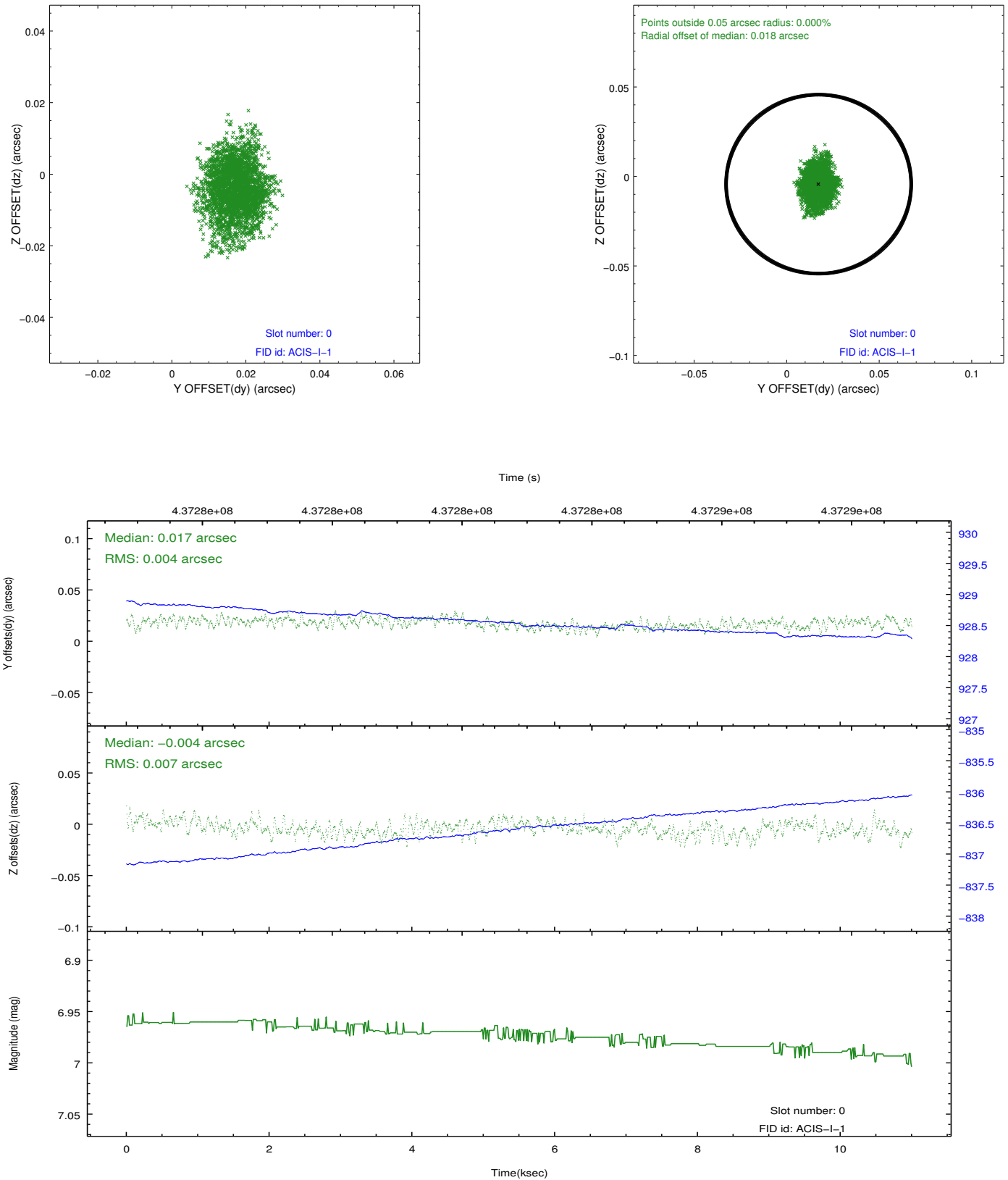


2.4.5 Slot 7

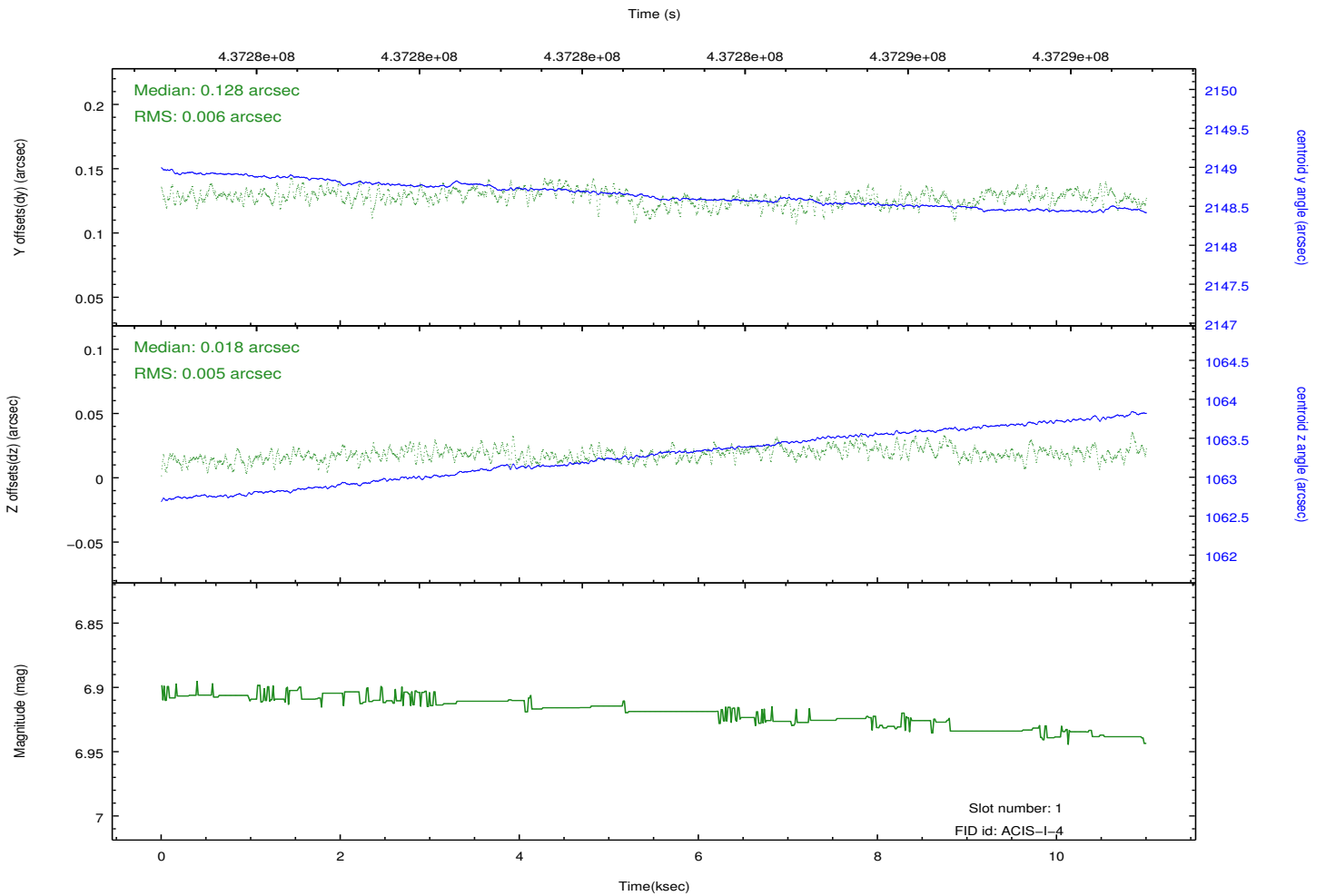
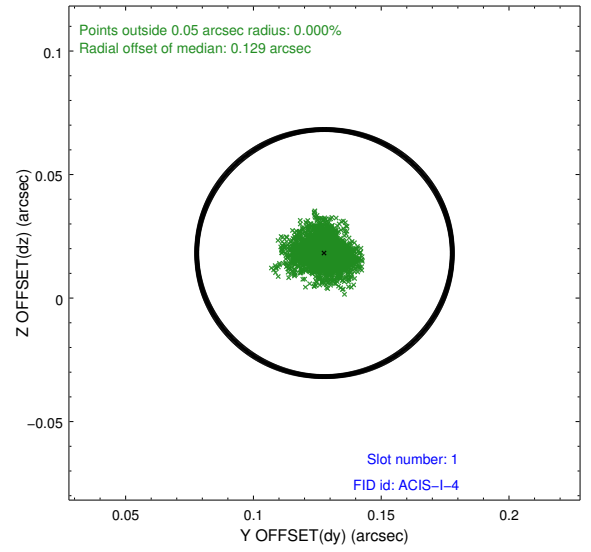
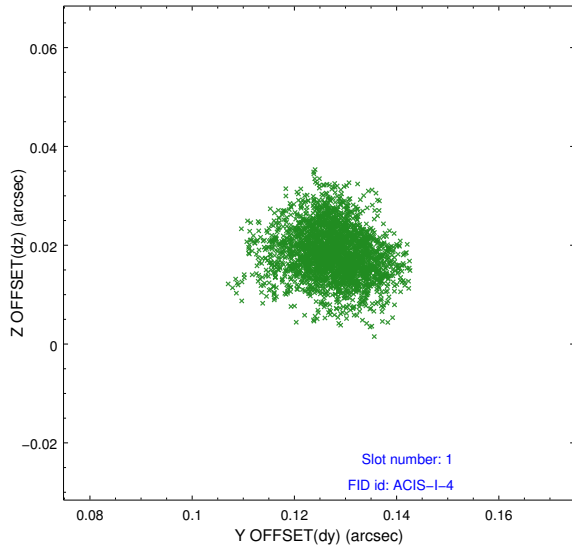


2.5 FID Slots

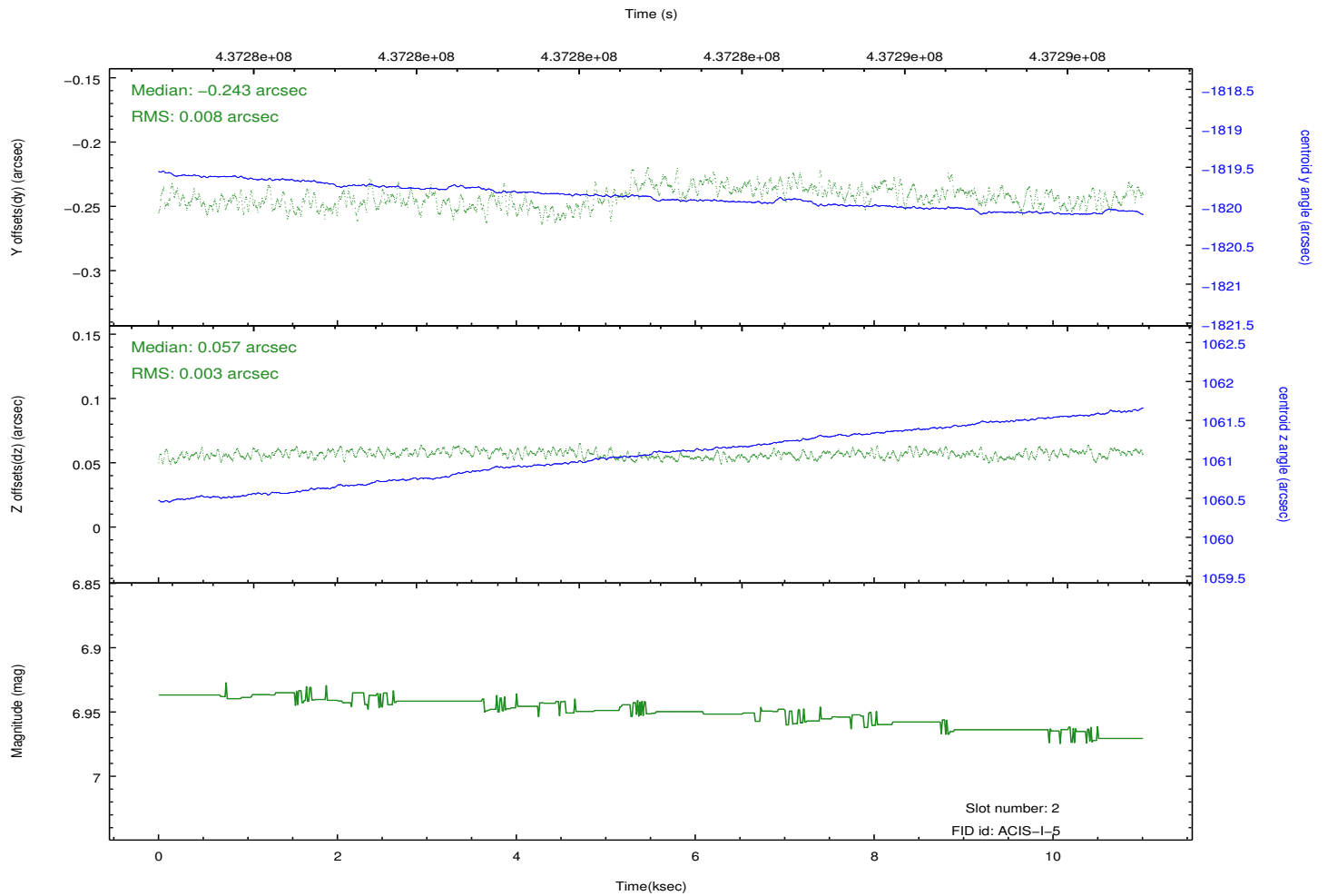
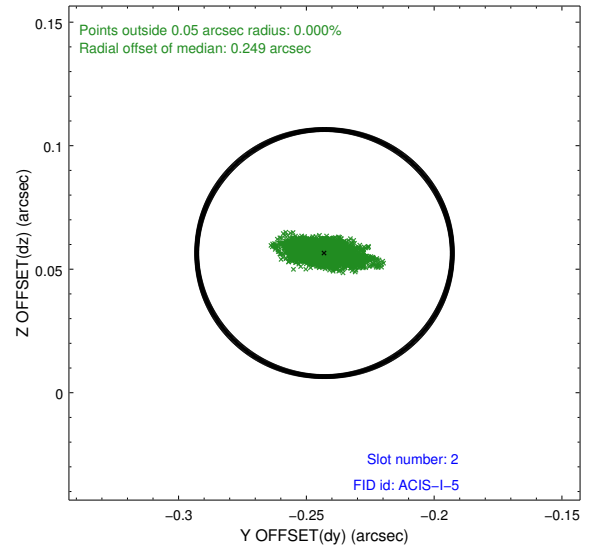
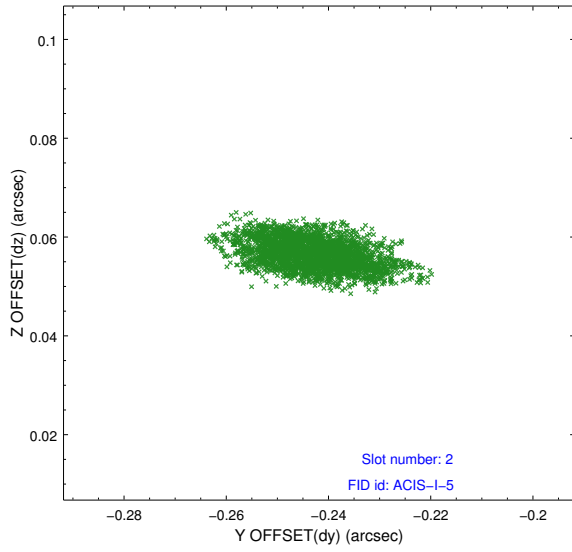
2.5.1 Slot 0



2.5.2 Slot 1



2.5.3 Slot 2



A Summary

A.1 Status

V&V Scientist	Jen Lauer
V&V Date (YYYY-MM-DD)	2012.02.29
V&V Edition	1
V&V Disposition and Status	OK
V&V Charge Time	10.932911260009

A.2 Comments

A spatial region of the original bias map for CCD = 1 suffered from anomalously high data values. Pixels in the event data that were bias-corrected by one of the original affected bias pixels may have an apparent energy shift. While the change in energy is expected to be small (~20 eV), it depends on many parameters that have not yet been fully explored for this bias anomaly. The bias map for CCD = 1 has been reconstructed for this processing to remove this anomaly using scaled data from a comparable bias map from another observation. The pixels affected by the anomaly are bounded by sky coords:
(56.31820,32.13564), (56.32158,32.13946), (56.24400,32.18891), (56.24513,32.18222)

=====

Joint Observatories: CXO-Spitzer. Monitor constraint met.