

V&V Reference Report

L2 ASCDS Version : 8.4.5

Observation 13733 - L2 Version 2
Chandra X-Ray Center

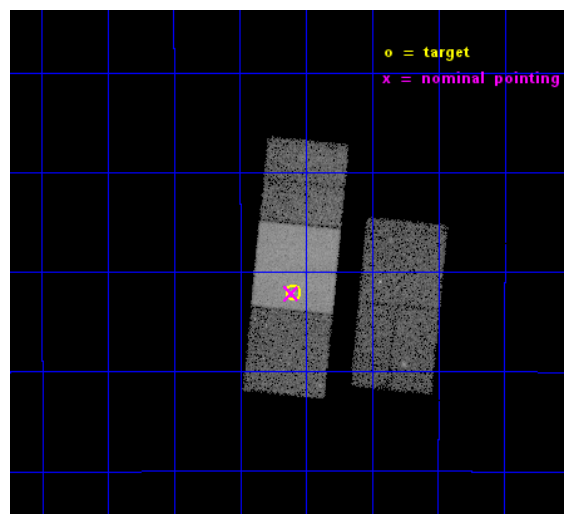
L2 Processing Date : Nov 29 2014

Contents

1	Front	2
2	OBI	3
2.1	OBI	3
2.1.1	Images	3
2.1.2	Bias	3
2.1.3	Parameters	4
2.1.4	Events	4
2.2	Compared Parameters	5
2.3	Aspect	6
2.4	Star Slots	9
2.4.1	Slot 3	9
2.4.2	Slot 4	10
2.4.3	Slot 5	11
2.4.4	Slot 6	12
2.4.5	Slot 7	13
2.5	FID Slots	14
2.5.1	Slot 0	14
2.5.2	Slot 1	15
2.5.3	Slot 2	16
A	Summary	17
A.1	Status	17
A.2	Comments	17

1 Front

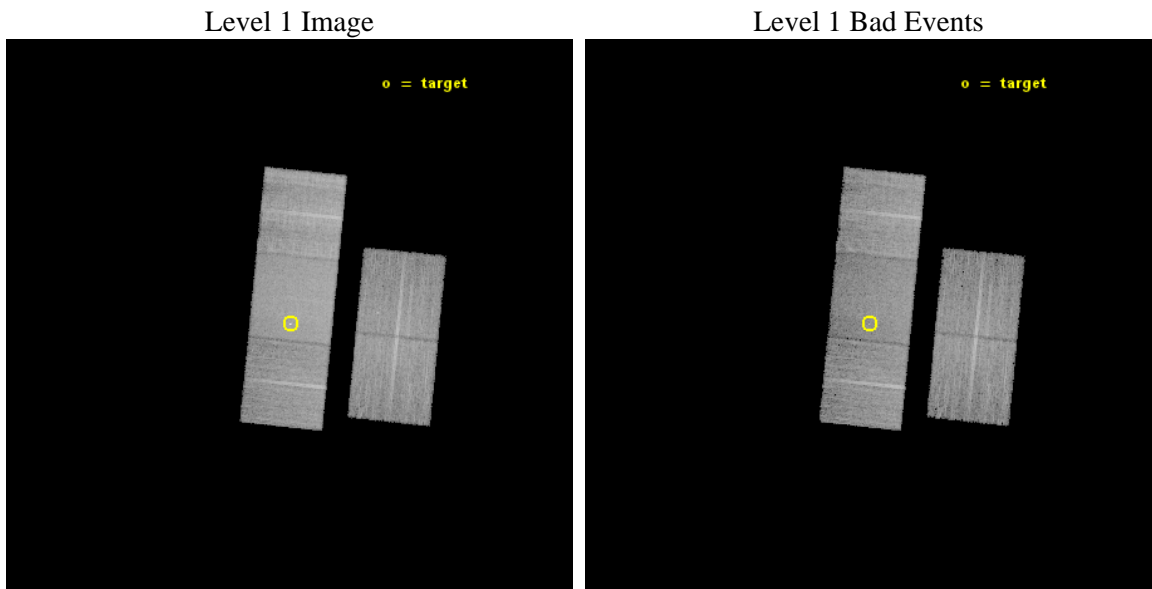
seq_num	401418	Sequence number
obs_id	13733	Observation id
title	Identifying New qLMXBs in Milky Way Globular Cluster Cores	Proposa
observer	Dr. David Morris	Principal investigator
object	NGC6717	Source name
dtycycle	0	
cycle	P	events from which exps? Prim/Second/Both
ra_targ	283.775	Observer's specified target RA [deg]
dec_targ	-22.701472	Observer's specified target Dec [deg]
ra_nom	283.77794851081	Nominal RA [deg]
dec_nom	-22.702874724189	Nominal Dec [deg]
roll_nom	275.7521761392	Nominal Roll [deg]
revision	2	Processing version of data
ontime	19071.003189445	Sum of GTIs [s]
livetime	18821.826492906	Livetime [s]
ontime2	19070.839029431	Sum of GTIs [s]
ontime3	19070.921109438	Sum of GTIs [s]
ontime6	19067.821159244	Sum of GTIs [s]
ontime7	19071.003189445	Sum of GTIs [s]
ontime8	19061.457128584	Sum of GTIs [s]
l2events	105216	Number of level 2 events



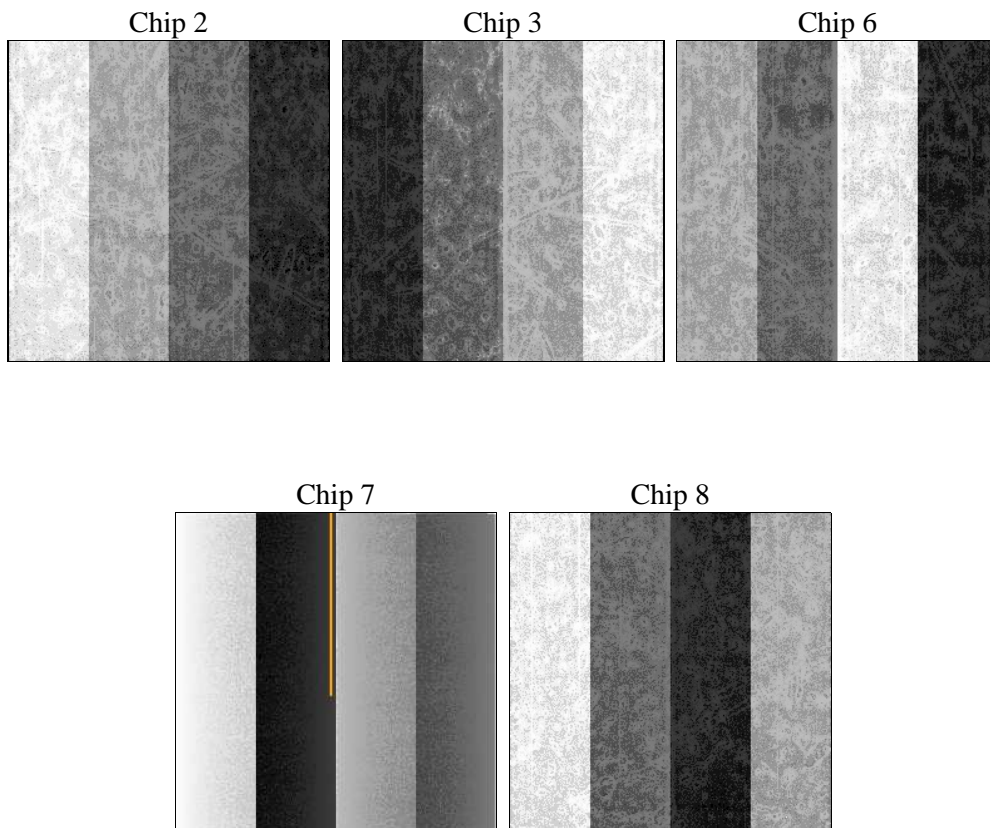
2 OBI

2.1 OBI

2.1.1 Images



2.1.2 Bias



2.1.3 Parameters

obi_num	0	Obi number	sched_exp_time	19297.788000	[s] Scheduled observation exposure time
ascdsver	10.3	Processing system revision	ontime	19071.003189445	Sum of GTIs [s]
caldbver	4.6.4	 	ontime2	19070.839029431	Sum of GTIs [s]
date	2014-11-29T12:37:02	Date and time of file creation	ontime3	19070.921109438	Sum of GTIs [s]
revision	2	Processing version of data	ontime6	19067.821159244	Sum of GTIs [s]
			ontime7	19071.003189445	Sum of GTIs [s]
			ontime8	19061.457128584	Sum of GTIs [s]
			l1events	564823	Number of level 1 events

2.1.4 Events

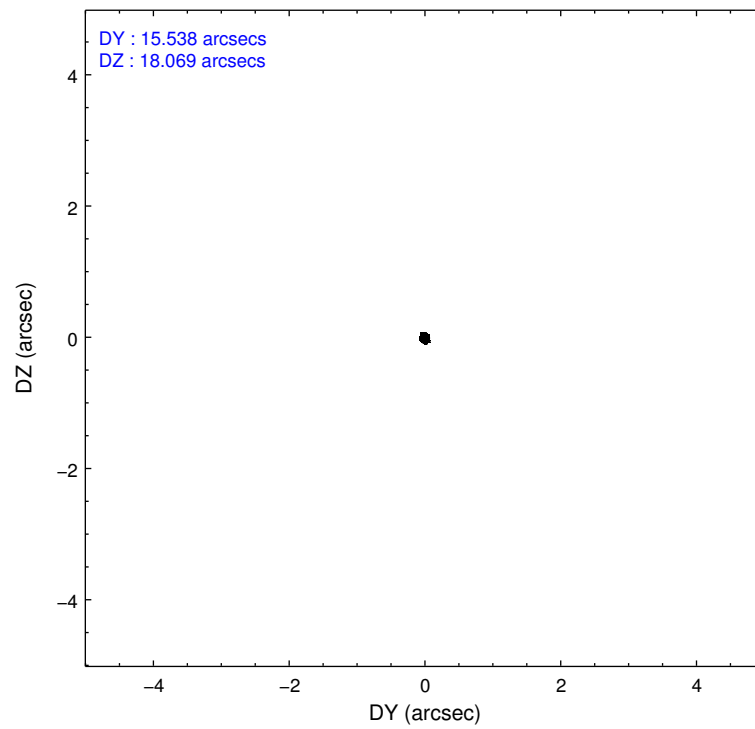
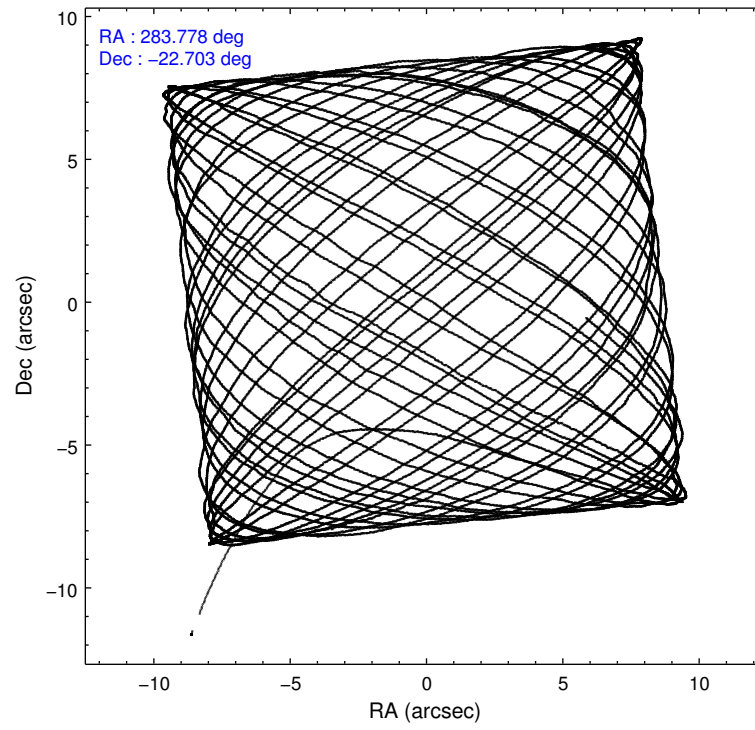
	ccd 2	ccd 3	ccd 6	ccd 7	ccd 8
level 1 events	97198	92144	100073	136261	139147
rejected events	85644	80692	86911	74346	102226
rejected %	88%	87%	86%	54%	73%

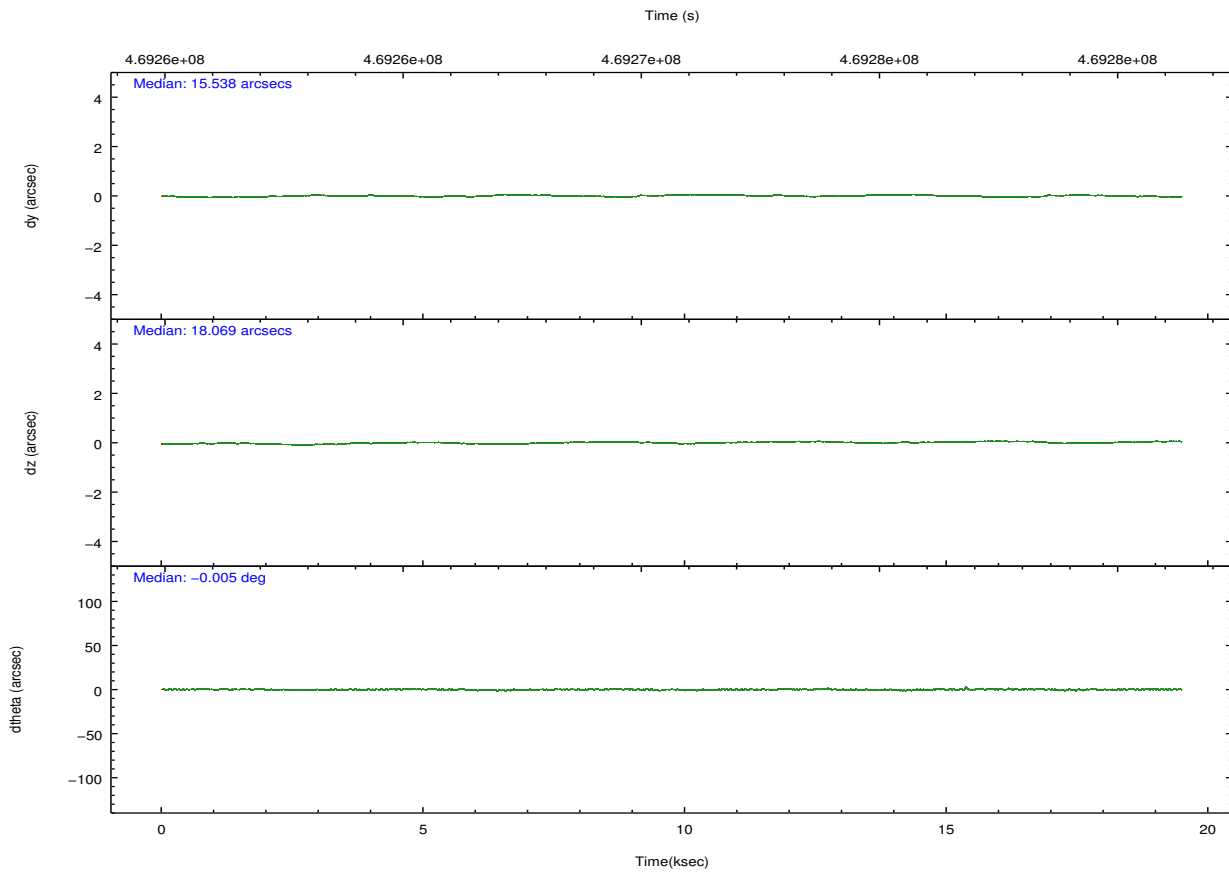
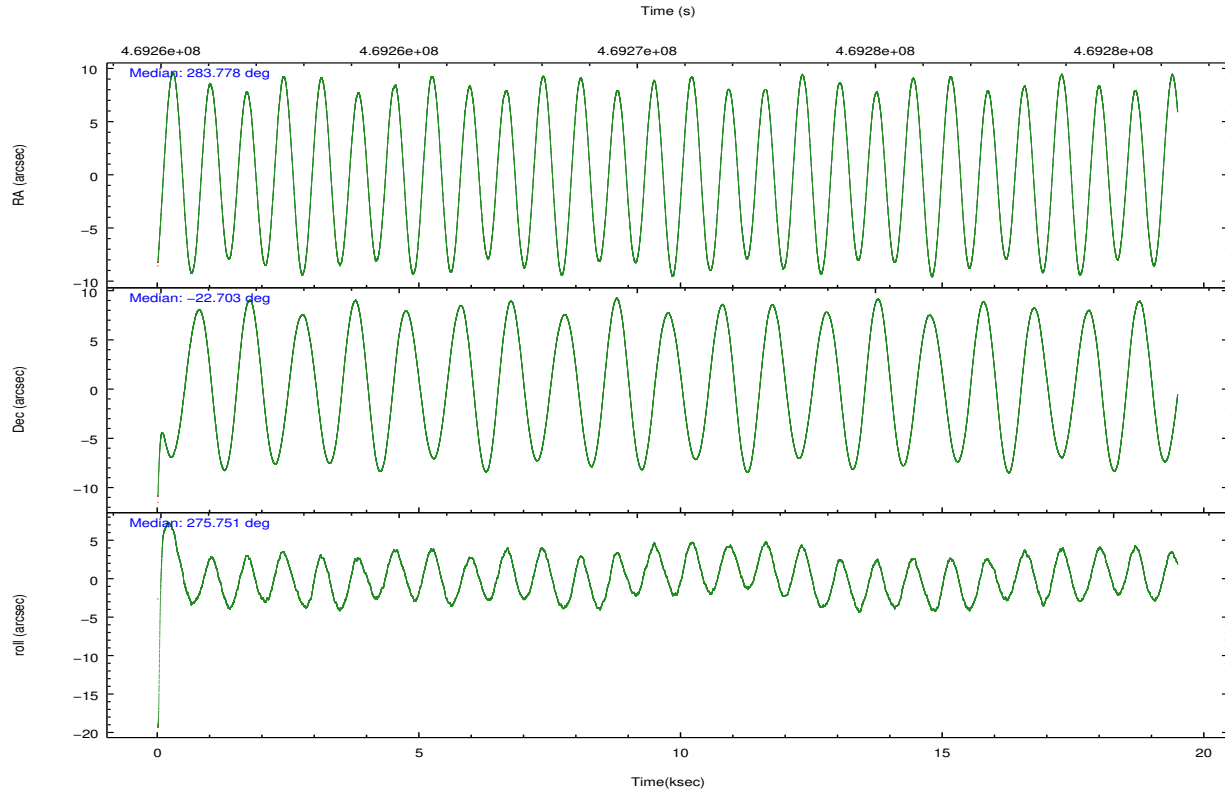
	ccd 2	ccd 3	ccd 6	ccd 7	ccd 8
grade 0 events	4434	4411	5077	6185	11795
	4%	4%	5%	4%	8%
grade 1 events	50	66	47	147	97
	0%	0%	0%	0%	0%
grade 2 events	2664	2477	2782	12868	8431
	2%	2%	2%	9%	6%
grade 3 events	1143	1151	1300	5225	3803
	1%	1%	1%	3%	2%
grade 4 events	1194	1147	1205	5379	3707
	1%	1%	1%	3%	2%
grade 5 events	4302	4989	5113	13827	7510
	4%	5%	5%	10%	5%
grade 6 events	2120	2268	2801	32266	9187
	2%	2%	2%	23%	6%
grade 7 events	81291	75635	81748	60364	94617
	83%	82%	81%	44%	67%

2.2 Compared Parameters

Parameter	Planned	Actual	Parameter	Planned	Actual
Instrument	ACIS	ACIS	Obspar format version number	7	7
Detector	ACIS-23678	ACIS-23678	Obspar file type	PREDICTED	ACTUAL
Grating	NONE	NONE	Obspar update status	NONE	UPDATED
Data mode	FAINT	FAINT	Number of optional ACIS chips dropped	0	0
Observation mode	POINTING	POINTING	On-chip summing requested	N	N
[deg] Pointing RA	283.760288	283.7779485108137	Subarray requested	NONE	NONE
[deg] Pointing Dec	-22.680861	-22.70287472418874	Alternating exposures requested	N	N
[deg] Pointing Roll	275.588754	275.7521761391988	[s] Primary exposure time	0.000000	3.1
[mm] SIM focus pos	-0.684267	-0.6828225247311905			
[mm] SIM defocus	0	0.001444936568705701			
[mm] SIM translation stage pos	-190.132523	-190.145094680475			
[mm] SIM translation stage offset	0	0.01257209746719923			
[s] Observation start time (MET)	469261100.184000	469259596.5317			
Observation start date	2012-11-14T06:17:13	2012-11-14T05:53:16			
[s] Observation end time (MET)	469280398.184000	469280623.38283			
Observation end date	2012-11-14T11:38:51	2012-11-14T11:43:43			
Read mode	TIMED	TIMED			

2.3 Aspect





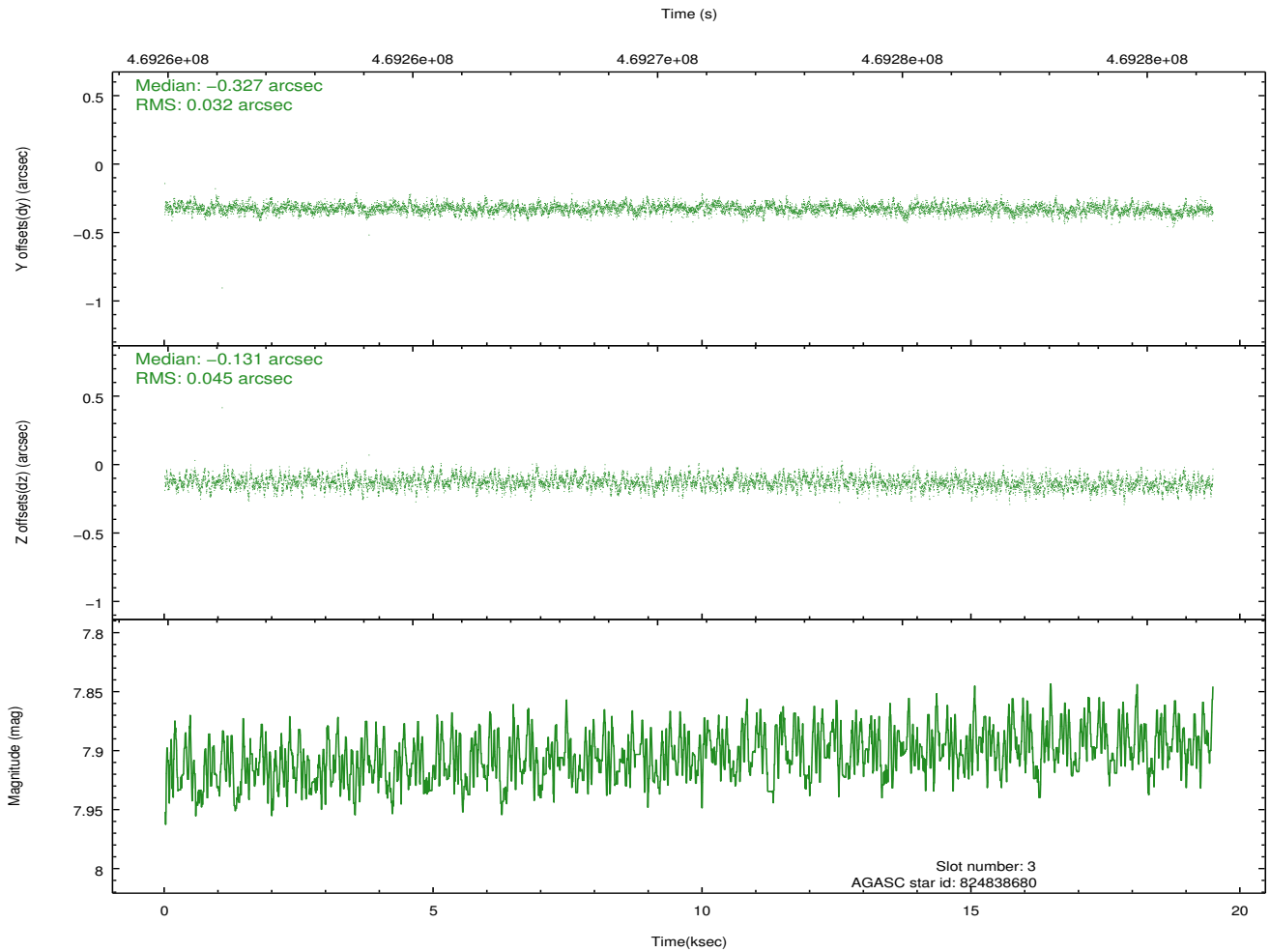
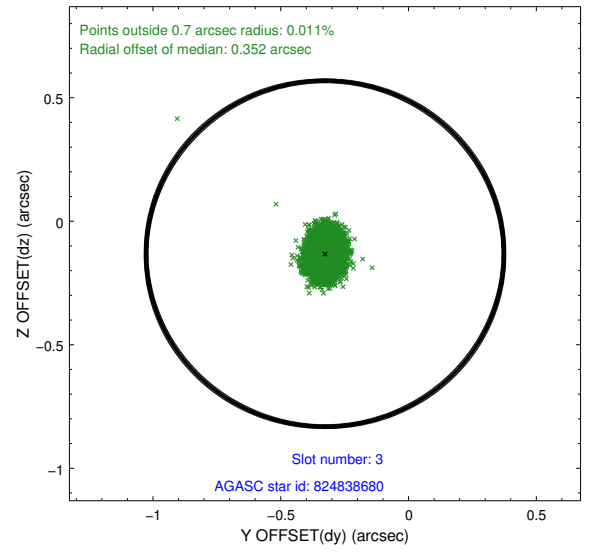
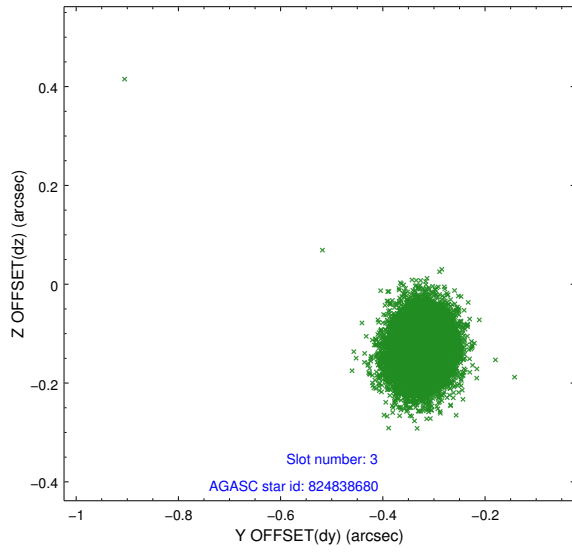
Slot Statistics

slot	status	used	id	mag	n_pts	med_dy	med_dz	dr1	dr2	ra	dec	mean_y	mean_z
0	FID		ACIS-S-1	7.00	4754	0.085	-0.032	0.009	0.018	0.000000	0.000000	927.58	-1735.10
1	FID		ACIS-S-5	7.04	4754	-0.145	0.061	0.007	0.014	0.000000	0.000000	-1821.52	162.38
2	FID		ACIS-S-6	7.14	4754	0.039	-0.017	0.007	0.013	0.000000	0.000000	392.90	806.46
3	GUIDE	used	824838680	7.90	9507	-0.327	-0.131	0.058	0.095	283.159937	-22.303028	-1544.09	-1857.96
4	GUIDE	used	899155640	8.92	9501	0.278	-0.004	0.088	0.141	283.140851	-22.556555	-640.99	-2006.58
5	GUIDE	used	899157712	9.06	9497	-0.527	0.092	0.115	0.178	284.455154	-23.062343	1596.33	2156.39
6	GUIDE	used	899163040	7.78	9507	0.814	-0.029	0.078	0.125	284.142009	-23.148695	1802.42	1093.68
7	GUIDE	used	824839288	8.86	9503	-0.238	0.072	0.085	0.140	283.247418	-22.212766	-1840.18	-1537.20

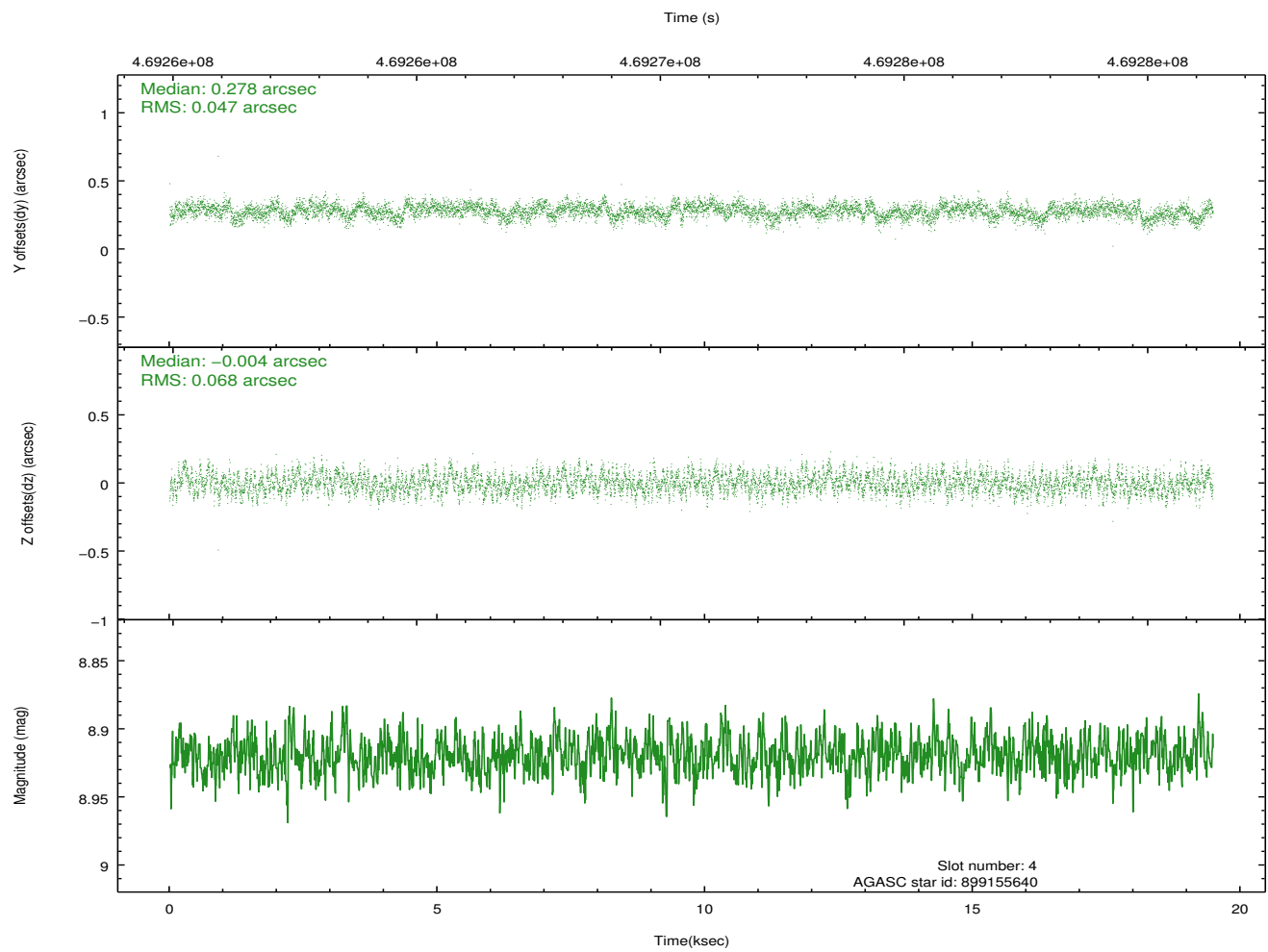
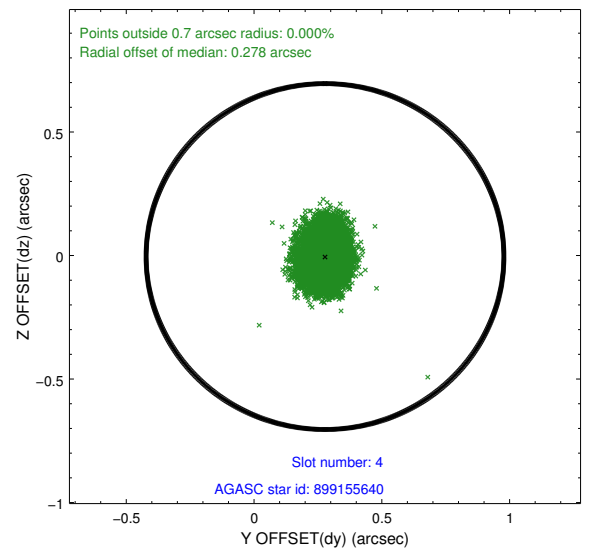
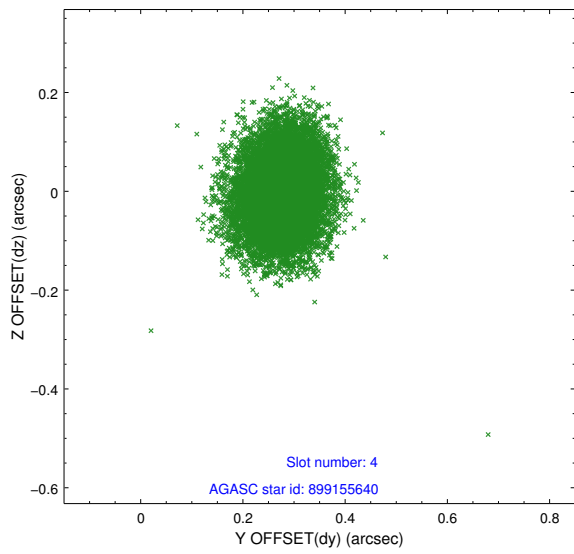
∞

2.4 Star Slots

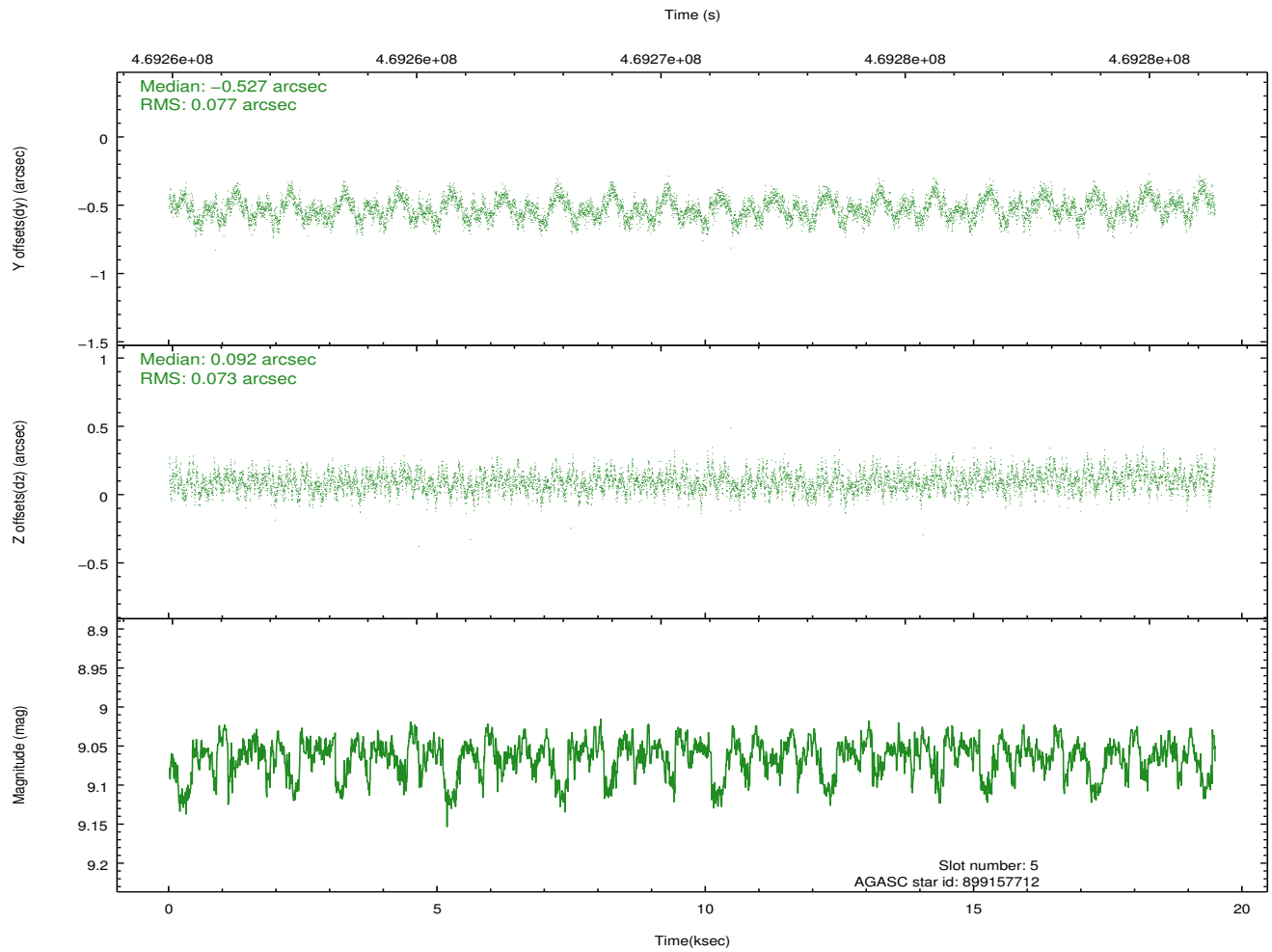
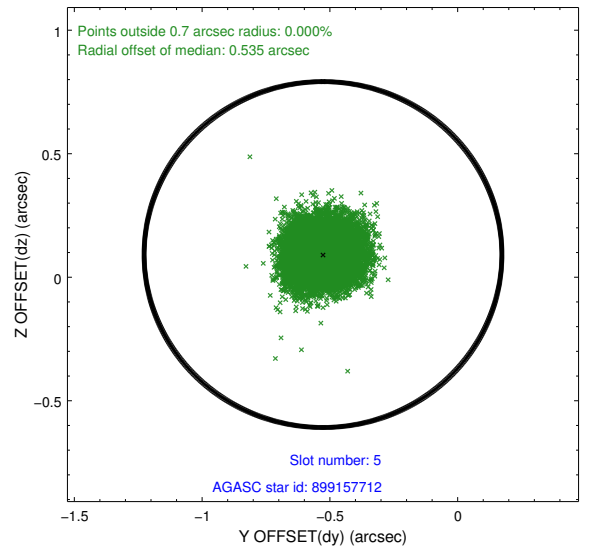
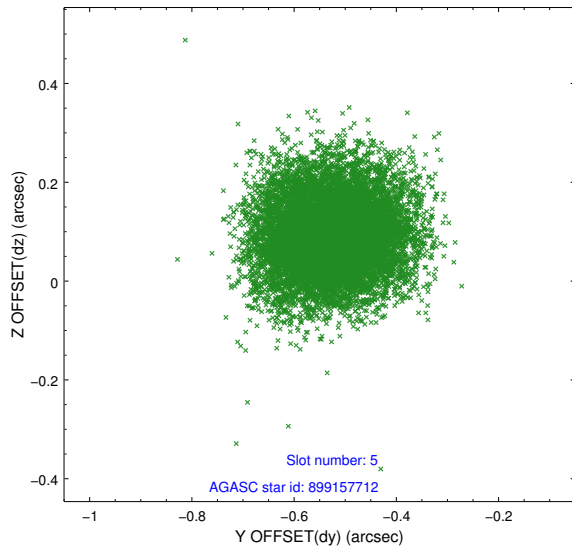
2.4.1 Slot 3



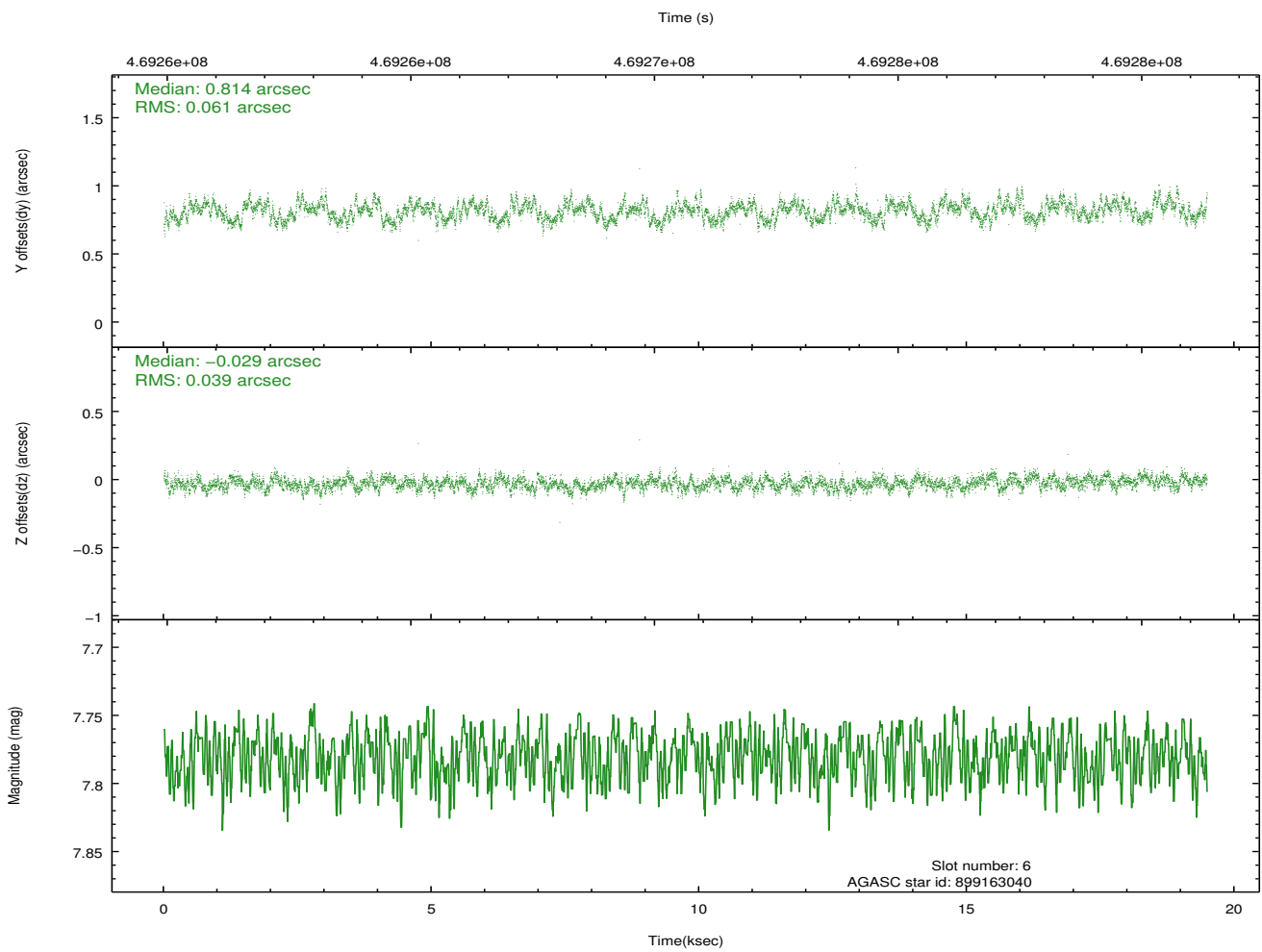
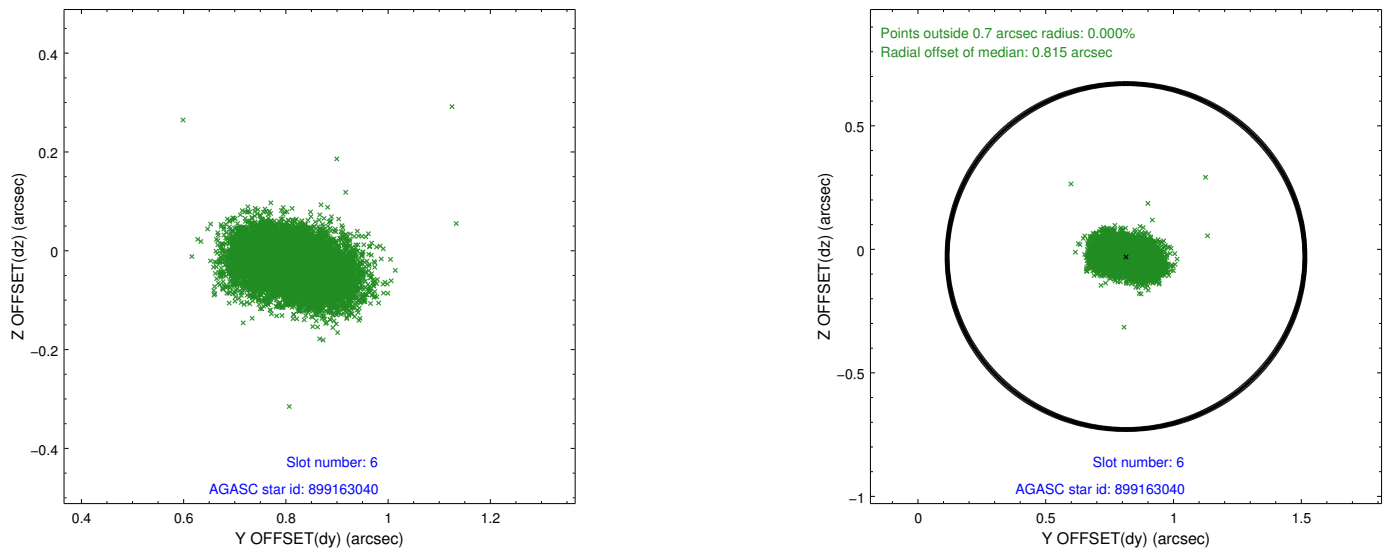
2.4.2 Slot 4



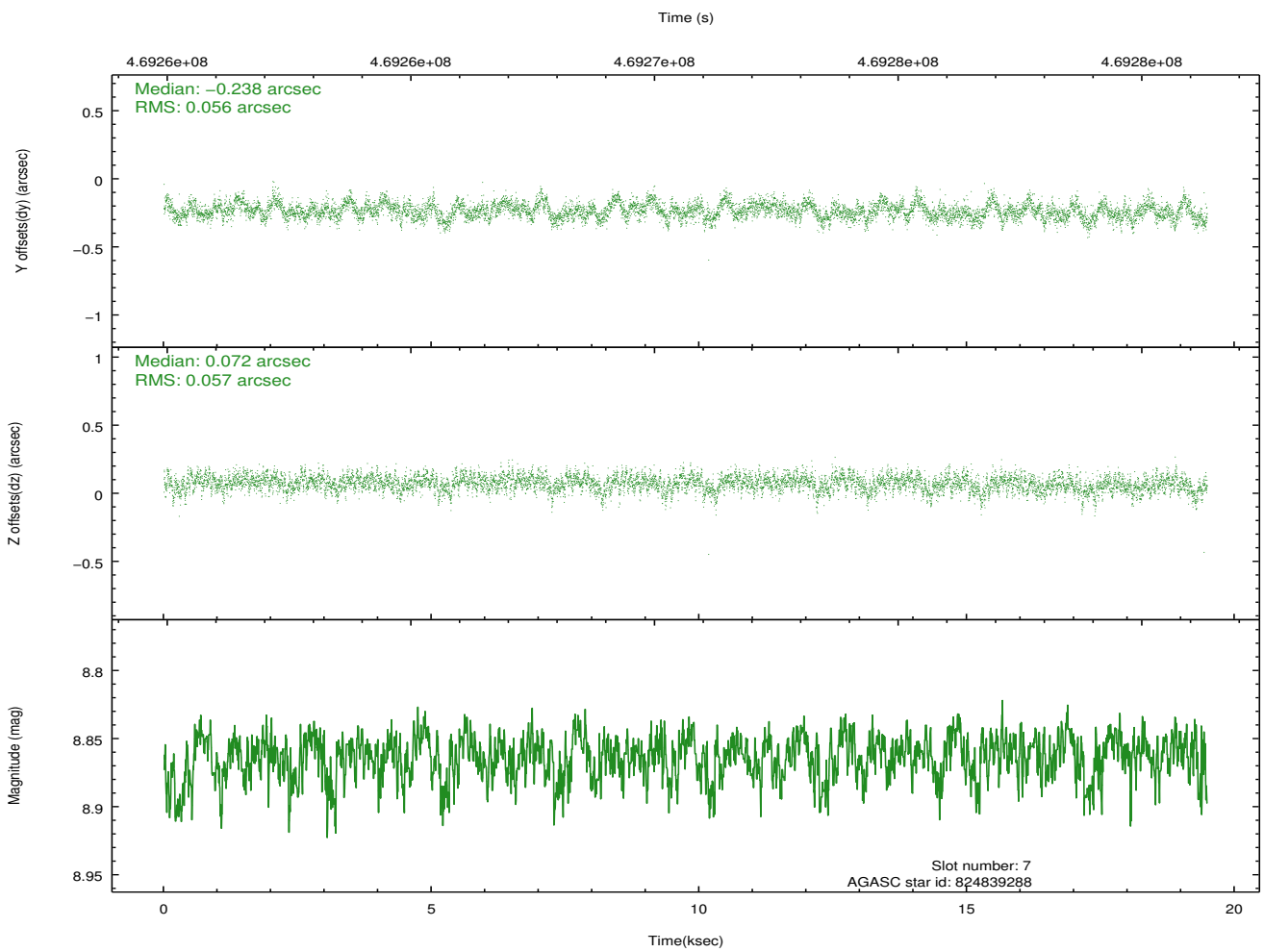
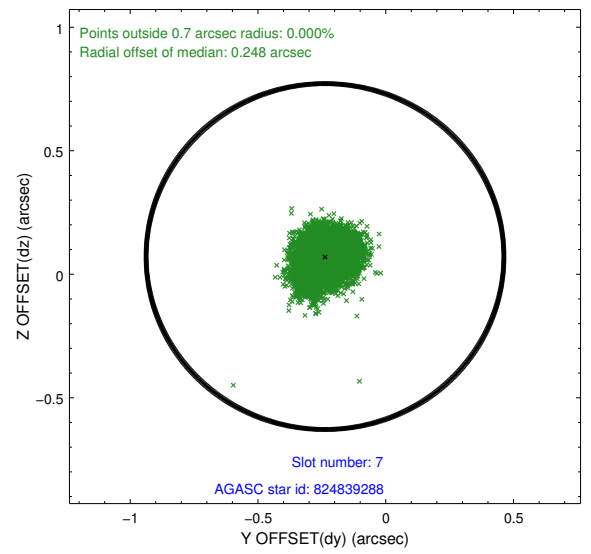
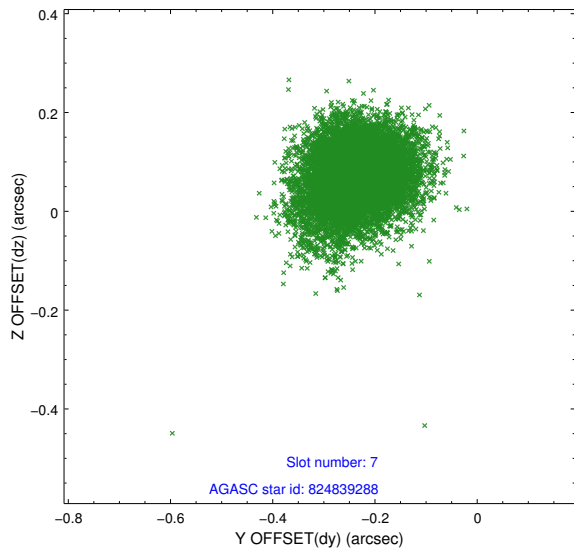
2.4.3 Slot 5



2.4.4 Slot 6

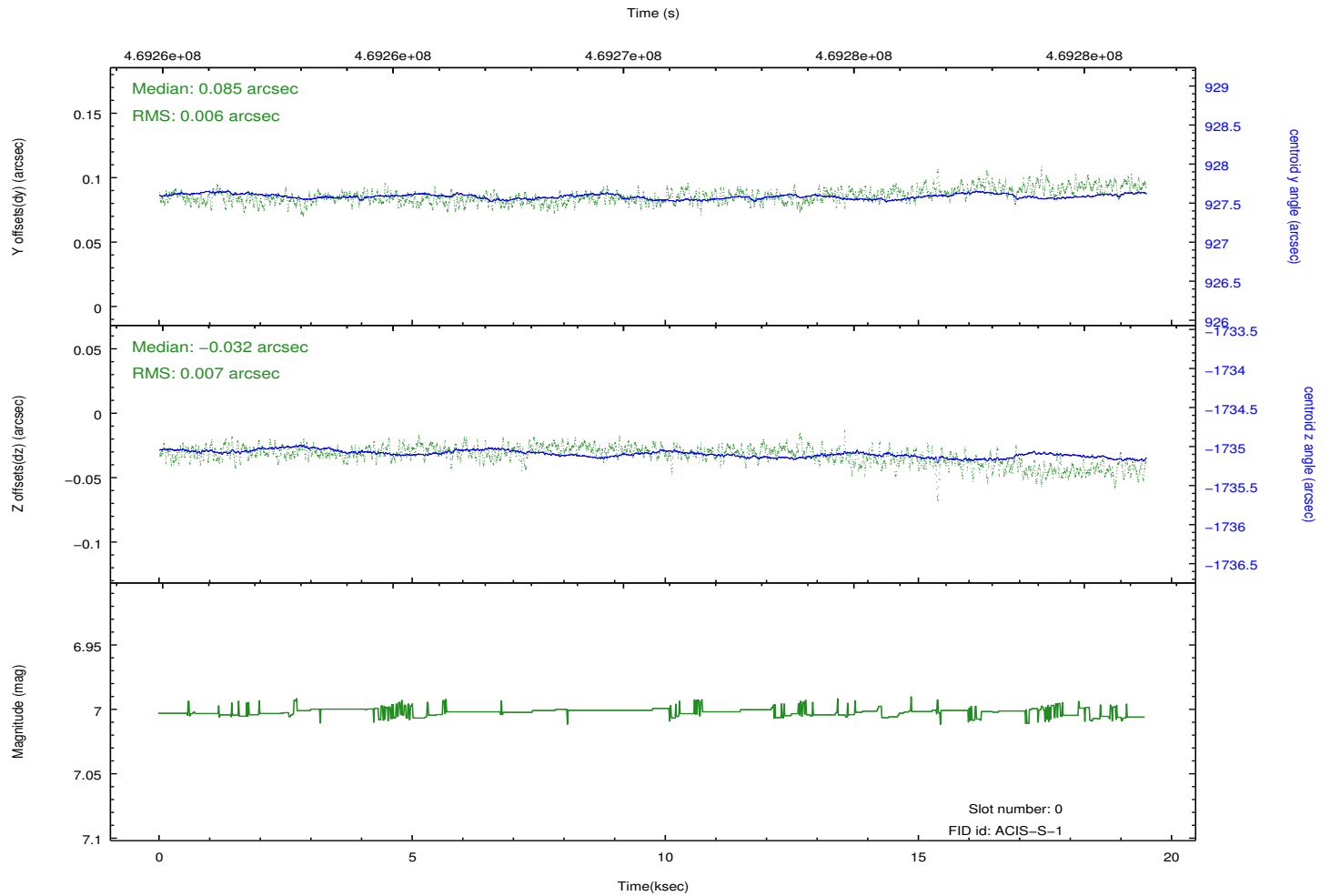
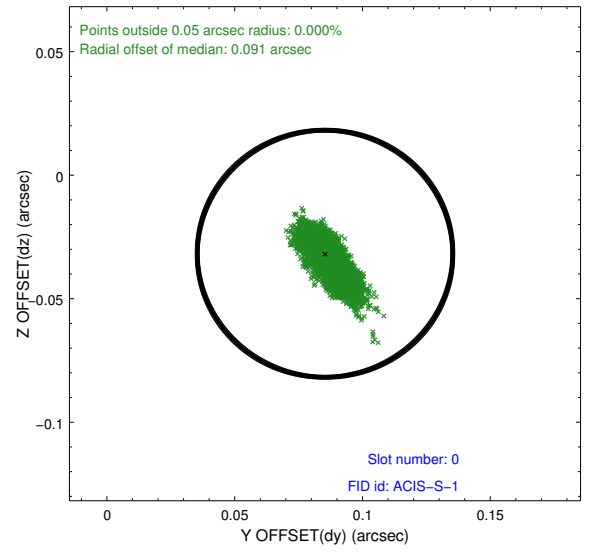
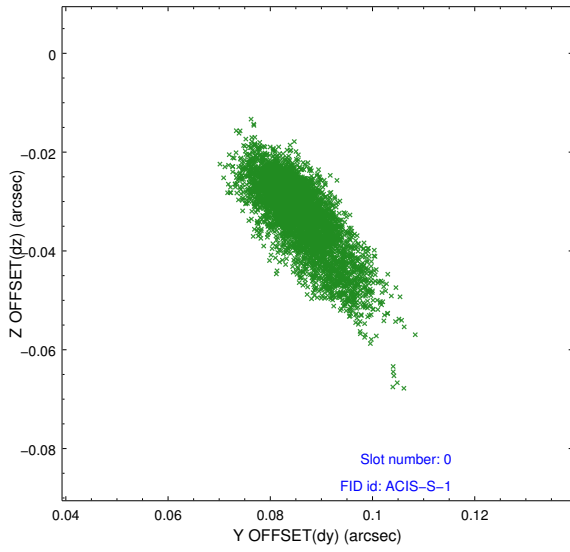


2.4.5 Slot 7

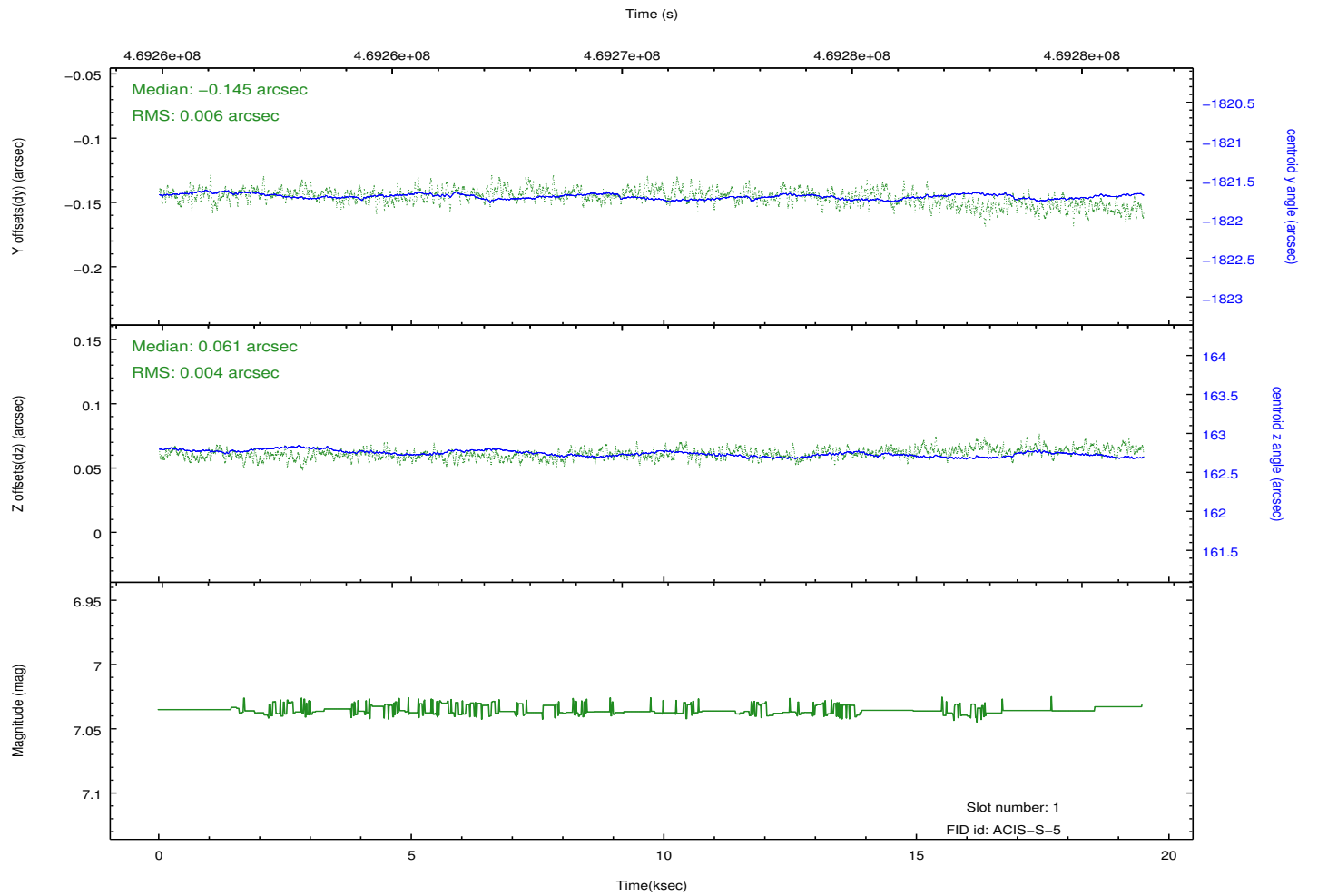
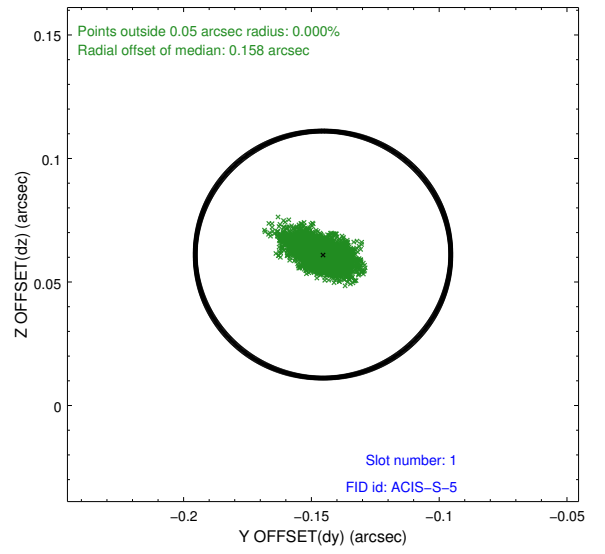
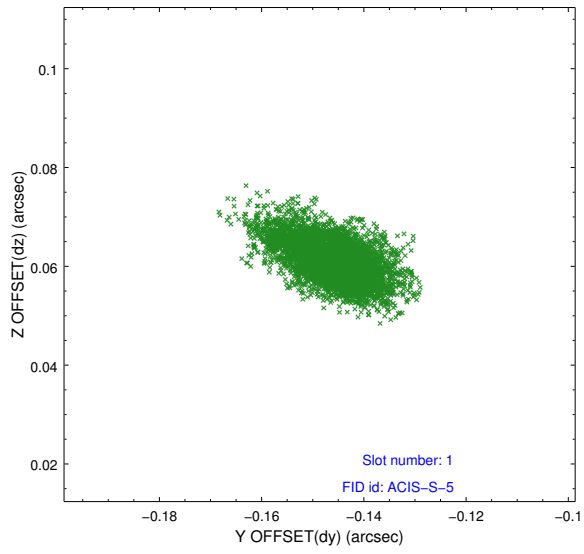


2.5 FID Slots

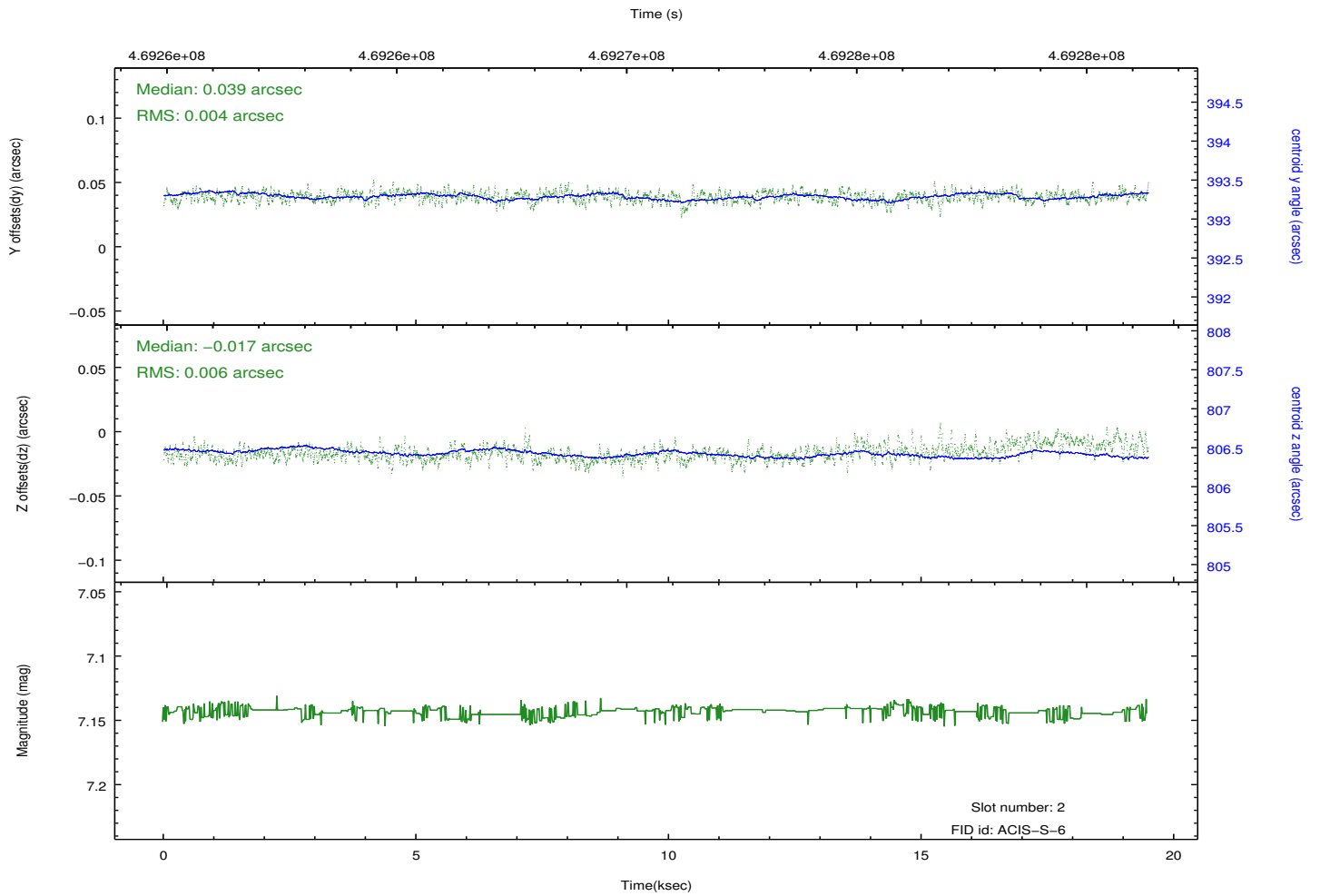
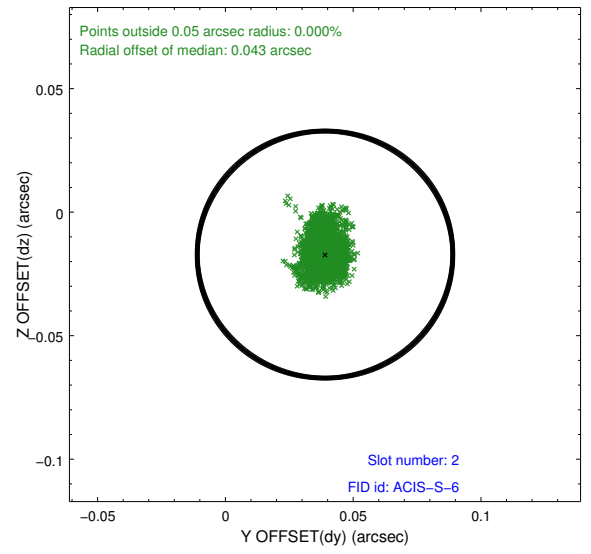
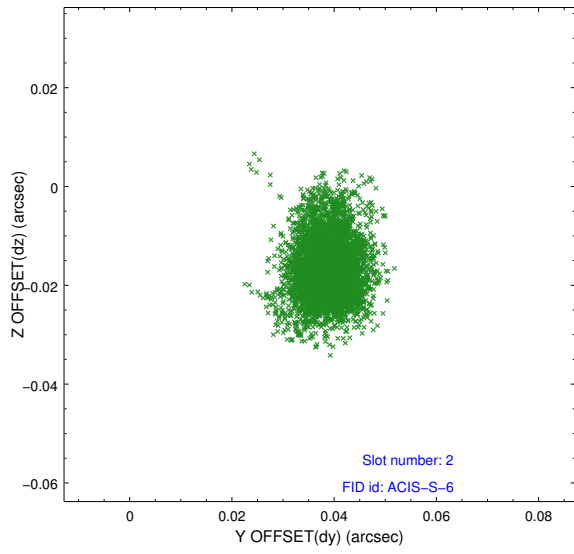
2.5.1 Slot 0



2.5.2 Slot 1



2.5.3 Slot 2



A Summary

A.1 Status

V&V Scientist	Beth Sundheim
V&V Date (YYYY-MM-DD)	2014.12.03
V&V Edition	1
V&V Disposition and Status	OK
V&V Charge Time	19.071003189445

A.2 Comments

These data have been reprocessed with new aspect alignment calibration files that correct small mean offsets (up to 0.4 arcsecs) and improve overall astrometric accuracy. The new calibration was determined using data from the time period being reprocessed and was performed using cross-correlation of X-ray sources with radio and optical counterparts.