

V&V Reference Report

L2 ASCDS Version : 8.5.1.1

Observation 13773 - L2 Version 2
Chandra X-Ray Center

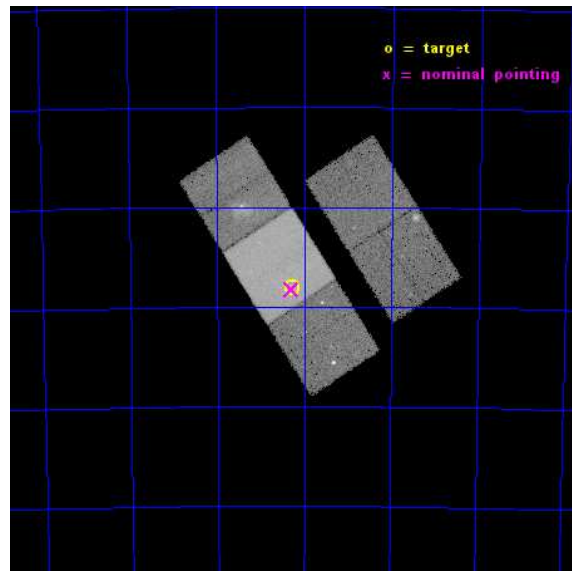
L2 Processing Date : Dec 1 2014

Contents

1	Front	2
2	OBI	3
2.1	OBI	3
2.1.1	Images	3
2.1.2	Bias	3
2.1.3	Parameters	4
2.1.4	Events	4
2.2	Compared Parameters	5
2.3	Aspect	6
2.4	Star Slots	9
2.4.1	Slot 3	9
2.4.2	Slot 4	10
2.4.3	Slot 5	11
2.4.4	Slot 6	12
2.4.5	Slot 7	13
2.5	FID Slots	14
2.5.1	Slot 0	14
2.5.2	Slot 1	15
2.5.3	Slot 2	16
A	Summary	17
A.1	Status	17
A.2	Comments	17

1 Front

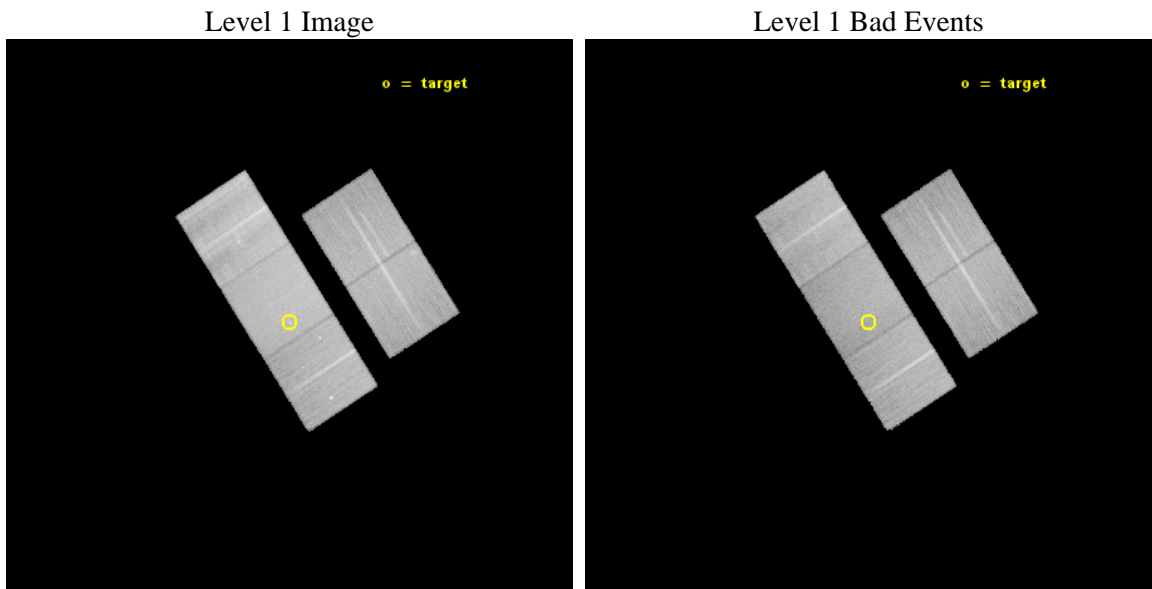
seq_num	501605	Sequence number
obs_id	13773	Observation id
title	IKT 16: A Composite SNR Discovered in the SMC?	Proposal title
observer	Dr. Jean Ballet	Principal investigator
object	IKT 16	Source name
dtycycle	0	
cycle	P	events from which exps? Prim/Second/Both
ra_targ	14.569583	Observer's specified target RA [deg]
dec_targ	-72.301667	Observer's specified target Dec [deg]
ra_nom	14.573752989041	Nominal RA [deg]
dec_nom	-72.30440339149	Nominal Dec [deg]
roll_nom	237.31516820244	Nominal Roll [deg]
revision	2	Processing version of data
ontime	39069.300300479	Sum of GTIs [s]
livetime	38558.831129653	Livetime [s]
ontime2	39069.300300479	Sum of GTIs [s]
ontime3	39066.159310222	Sum of GTIs [s]
ontime6	39059.877409399	Sum of GTIs [s]
ontime7	39069.300300479	Sum of GTIs [s]
ontime8	39069.300300479	Sum of GTIs [s]
l2events	223464	Number of level 2 events



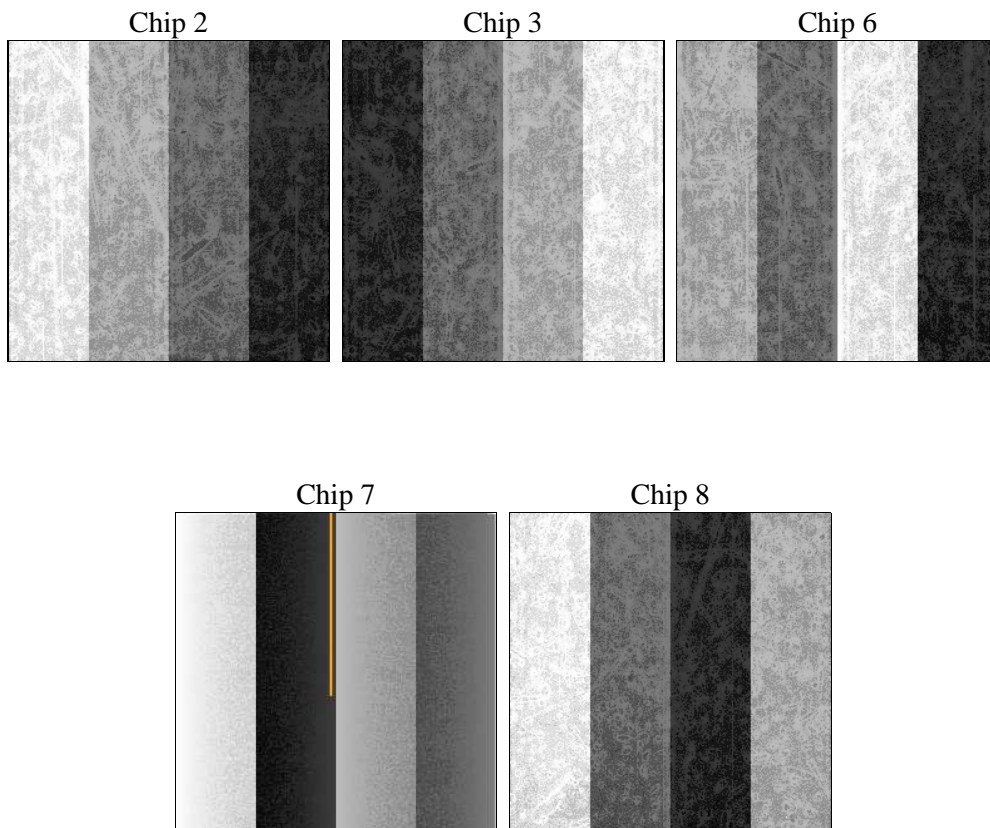
2 OBI

2.1 OBI

2.1.1 Images



2.1.2 Bias



2.1.3 Parameters

obi_num	0	Obi number	sched_exp_time	39000.000000	[s] Scheduled observation exposure time
ascdsver	10.3	Processing system revision	ontime	39069.300300479	Sum of GTIs [s]
caldbver	4.6.4	 	ontime2	39069.300300479	Sum of GTIs [s]
date	2014-12-01T11:44:23	Date and time of file creation	ontime3	39066.159310222	Sum of GTIs [s]
revision	2	Processing version of data	ontime6	39059.877409399	Sum of GTIs [s]
			ontime7	39069.300300479	Sum of GTIs [s]
			ontime8	39069.300300479	Sum of GTIs [s]
			l1events	1238090	Number of level 1 events

2.1.4 Events

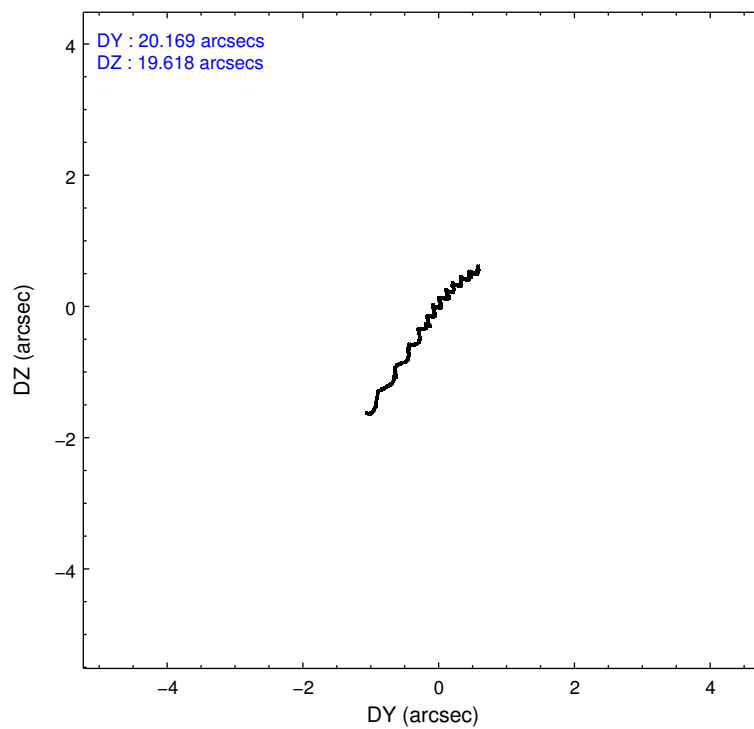
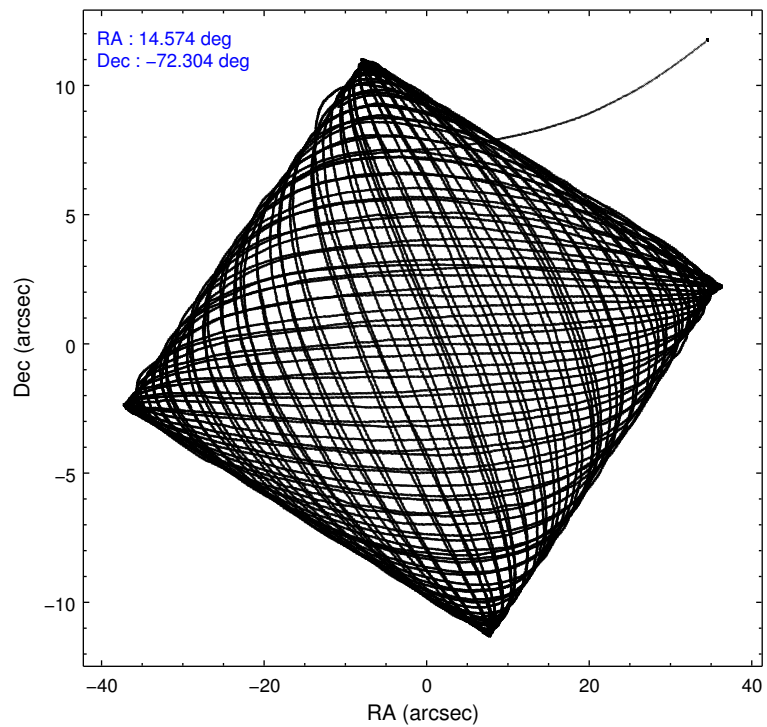
	ccd 2	ccd 3	ccd 6	ccd 7	ccd 8
level 1 events	212954	204154	224527	289770	306685
rejected events	187429	180283	194732	160907	214420
rejected %	88%	88%	86%	55%	69%

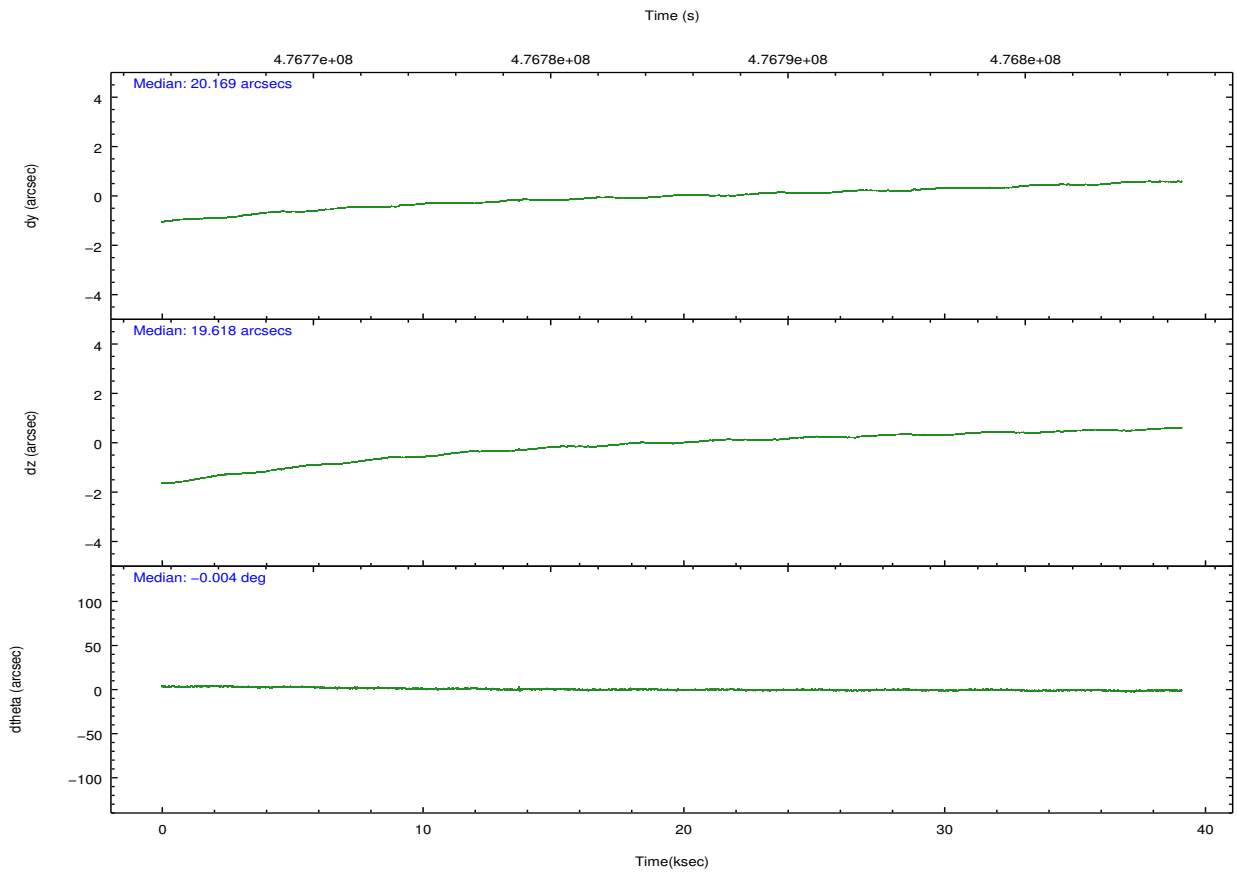
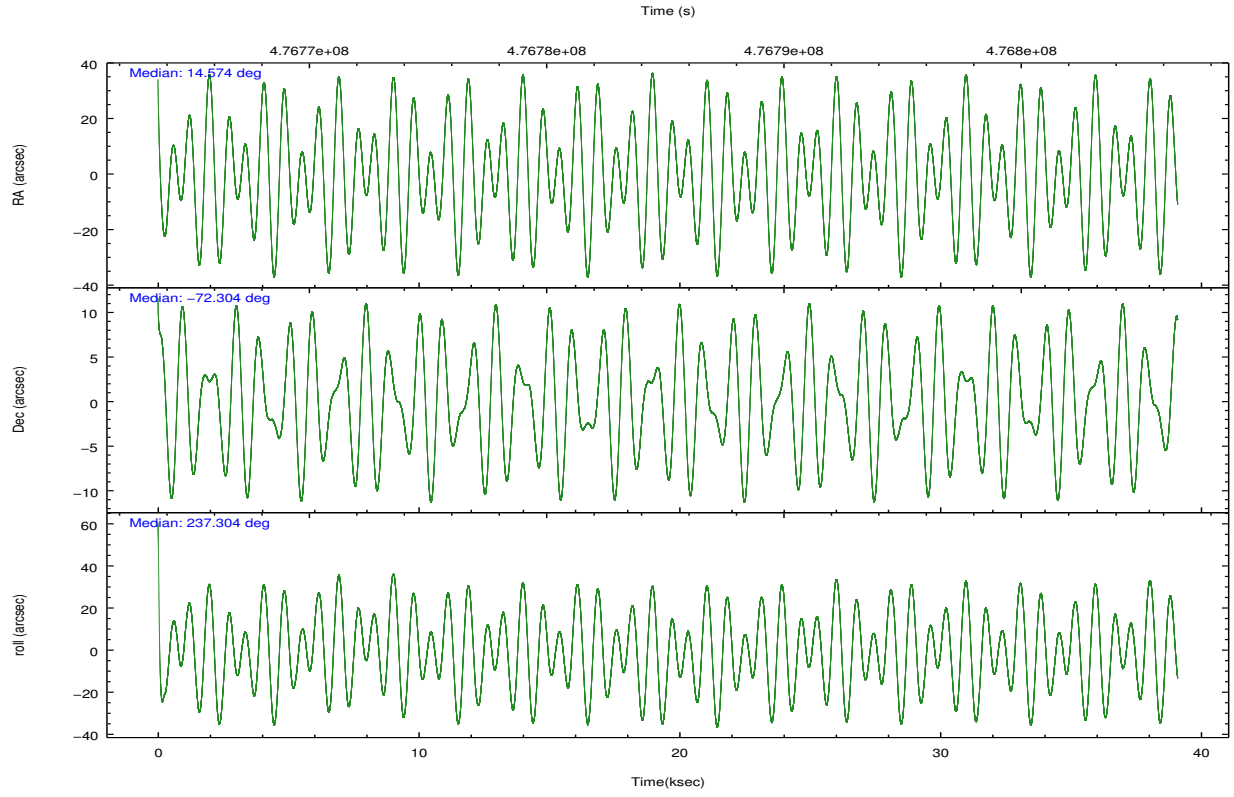
	ccd 2	ccd 3	ccd 6	ccd 7	ccd 8
grade 0 events	9703	8278	11713	12086	29969
	4%	4%	5%	4%	9%
grade 1 events	126	137	119	348	262
	0%	0%	0%	0%	0%
grade 2 events	6027	5324	6526	26881	19324
	2%	2%	2%	9%	6%
grade 3 events	2504	2685	2772	11061	10379
	1%	1%	1%	3%	3%
grade 4 events	2579	2610	2707	11186	9713
	1%	1%	1%	3%	3%
grade 5 events	9122	10765	11194	29722	16166
	4%	5%	4%	10%	5%
grade 6 events	4715	4974	6079	67656	22908
	2%	2%	2%	23%	7%
grade 7 events	178178	169381	183417	130830	197964
	83%	82%	81%	45%	64%

2.2 Compared Parameters

Parameter	Planned	Actual	Parameter	Planned	Actual
Instrument	ACIS	ACIS	Obspar format version number	7	7
Detector	ACIS-23678	ACIS-23678	Obspar file type	PREDICTED	ACTUAL
Grating	NONE	NONE	Obspar update status	NONE	UPDATED
Data mode	VFAINT	VFAINT	CCD I0 on	N	N
Observation mode	POINTING	POINTING	CCD I1 on	N	N
[deg] Pointing RA	14.576745	14.57375298904117	CCD I2 on	Y	Y
[deg] Pointing Dec	-72.277076	-72.3044033914903	CCD I3 on	Y	Y
[deg] Pointing Roll	237.161382	237.31516820244	CCD S0 on	N	N
[mm] SIM focus pos	-0.684267	-0.6828225247311905	CCD S1 on	N	N
[mm] SIM defocus	0	0.001444936568705701	CCD S2 on	Y	Y
[mm] SIM translation stage pos	-190.132523	-190.1400660498719	CCD S3 on	Y	Y
[mm] SIM translation stage offset	0	0.00754346686406393	CCD S4 on	O1	Y
[s] Observation start time (MET)	476765655.184000	476763903.81102	CCD S5 on	N	N
Observation start date	2013-02-09T02:53:08	2013-02-09T02:25:03	Number of optional ACIS chips dropped	0	0
[s] Observation end time (MET)	476804655.184000	476805224.63826	On-chip summing requested	N	N
Observation end date	2013-02-09T13:43:08	2013-02-09T13:53:44	Subarray requested	NONE	NONE
Read mode	TIMED	TIMED	Alternating exposures requested	N	N
			[s] Primary exposure time	0.000000	3.1

2.3 Aspect





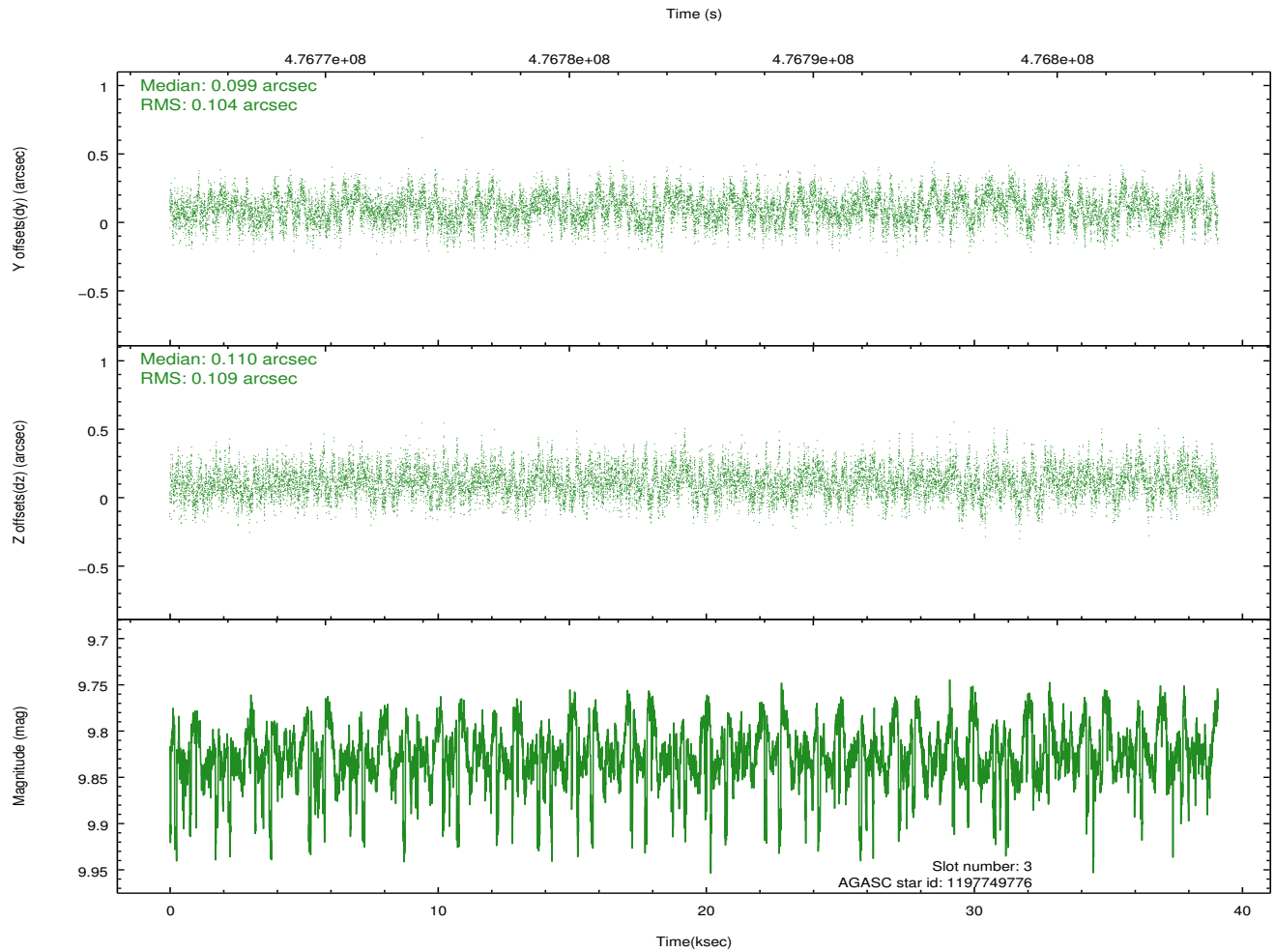
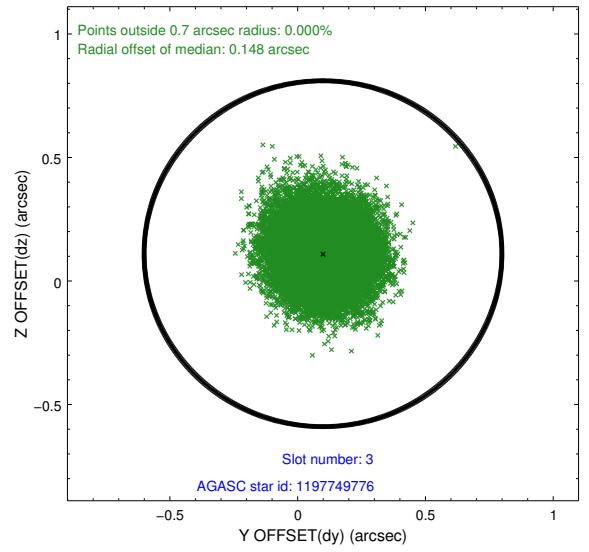
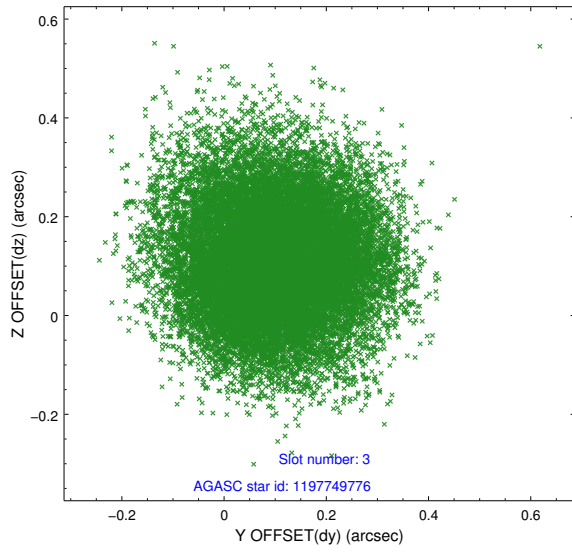
Slot Statistics

slot	status	used	id	mag	n_pts	med_dy	med_dz	dr1	dr2	ra	dec	mean_y	mean_z
0	FID		ACIS-S-2	6.97	9537	-0.128	-0.032	0.018	0.037	0.000000	0.000000	-773.35	-1740.99
1	FID		ACIS-S-4	7.05	9537	0.254	0.070	0.009	0.019	0.000000	0.000000	2140.31	167.56
2	FID		ACIS-S-5	7.08	9538	-0.156	-0.030	0.020	0.046	0.000000	0.000000	-1826.19	161.18
3	GUIDE	used	1197749776	9.83	18998	0.099	0.110	0.163	0.256	12.674349	-72.322893	1294.97	-1639.29
4	GUIDE	used	1197751048	8.59	19062	-0.070	0.179	0.083	0.129	12.451586	-72.130600	865.49	-2235.10
5	GUIDE	used	1197884712	8.32	19069	0.174	0.003	0.083	0.130	16.087398	-72.252690	-954.66	1356.30
6	GUIDE	used	1198189696	7.34	19073	-0.179	-0.263	0.090	0.136	15.223750	-72.697522	899.21	1405.27
7	GUIDE	used	1198192408	9.42	19037	-0.029	-0.032	0.153	0.245	12.860639	-72.678863	2235.24	-745.72

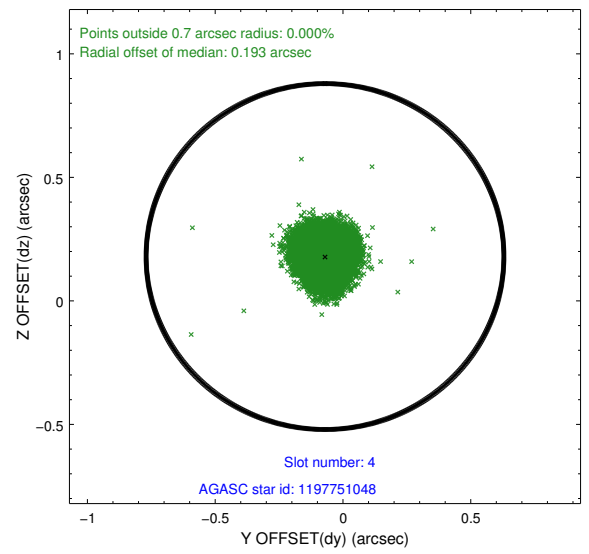
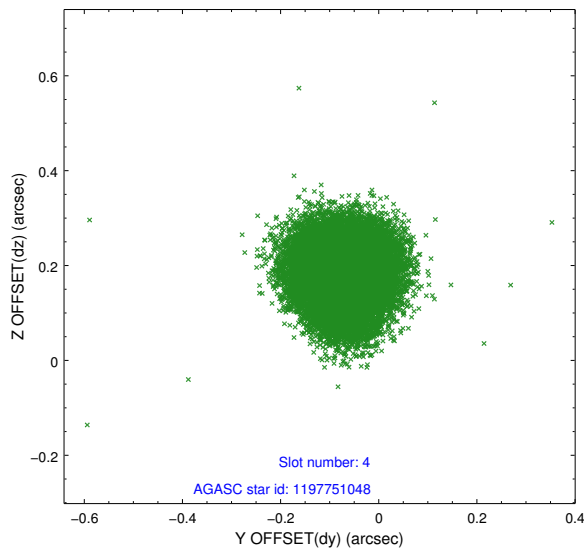
∞

2.4 Star Slots

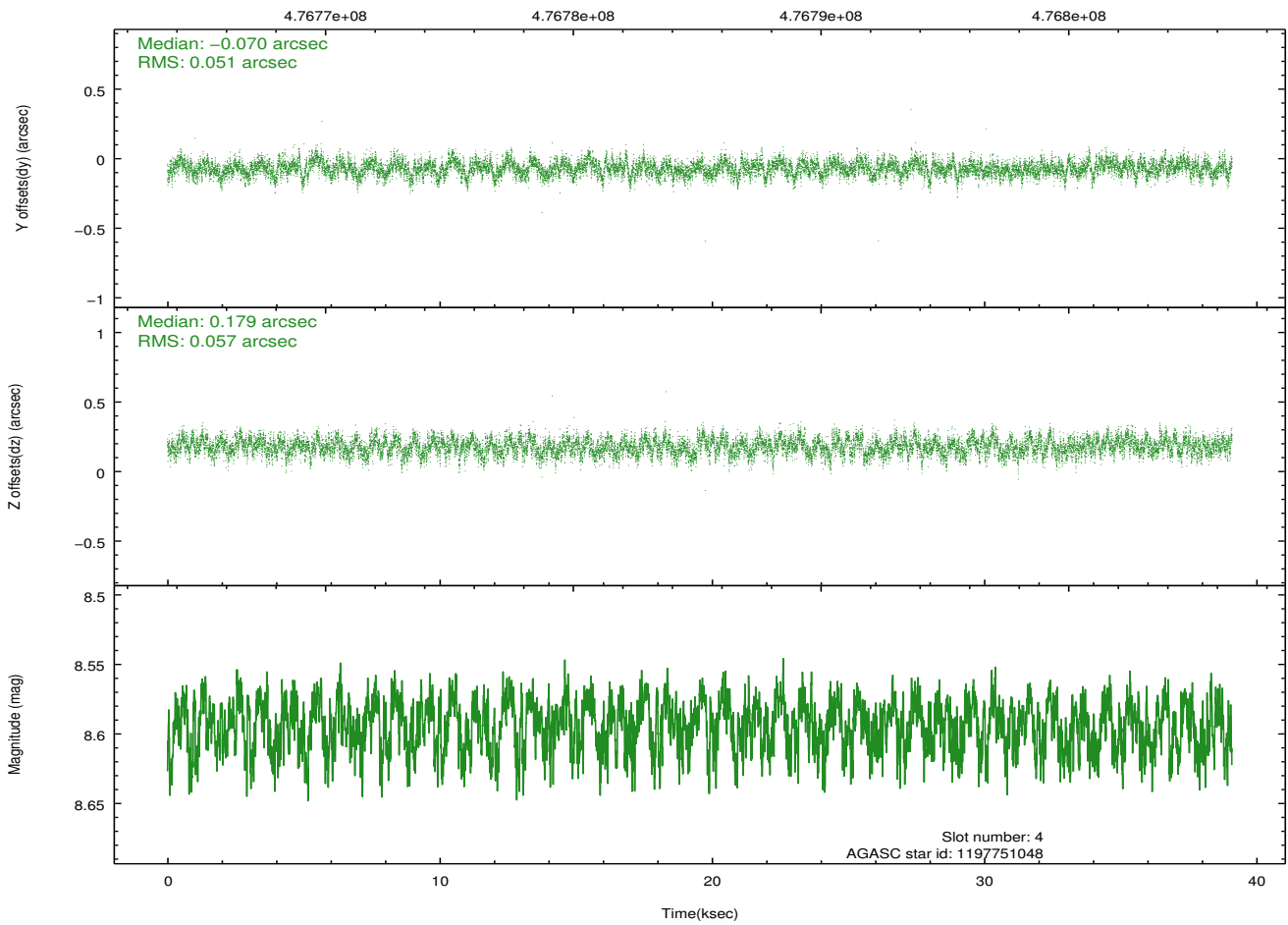
2.4.1 Slot 3



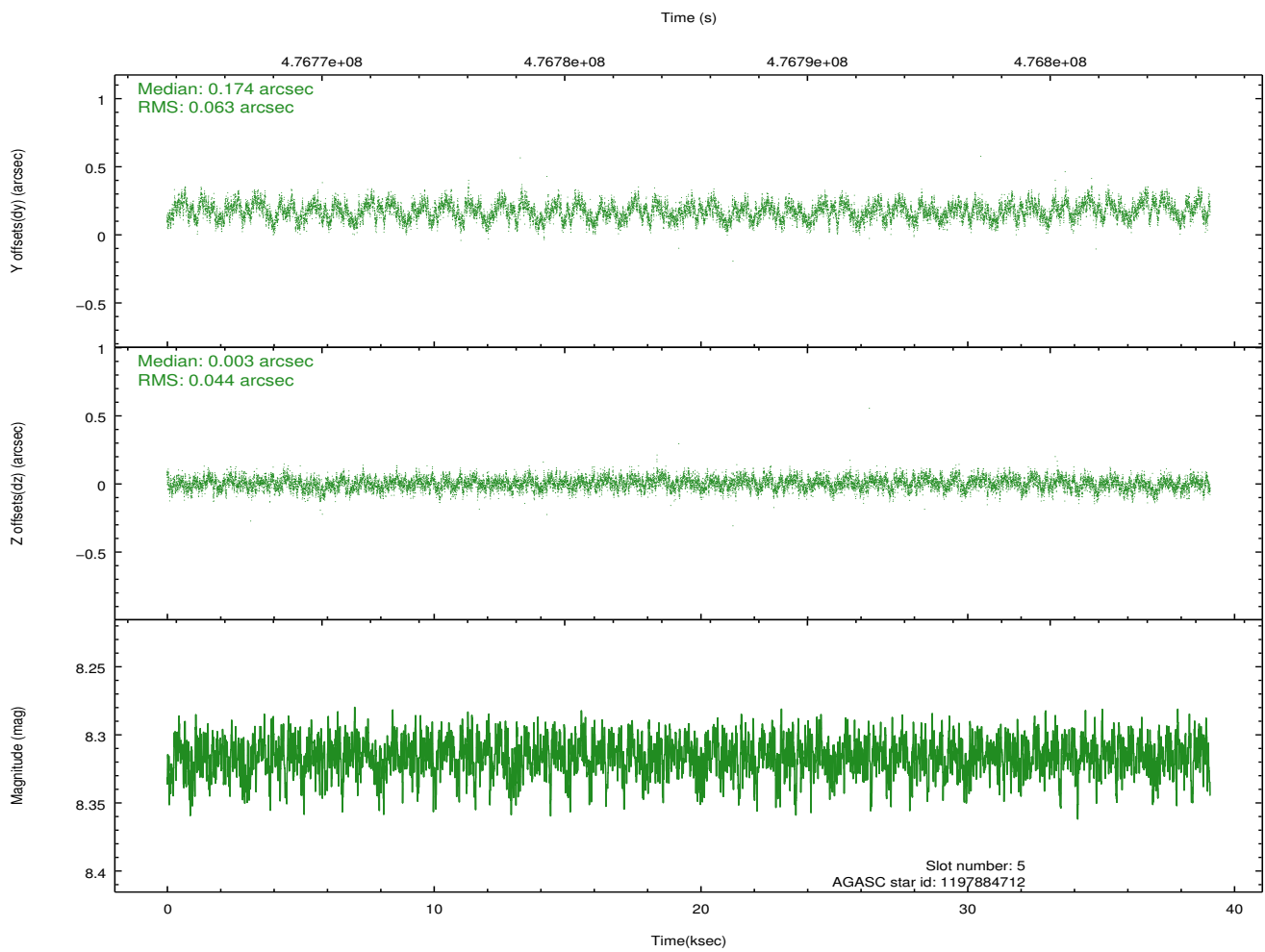
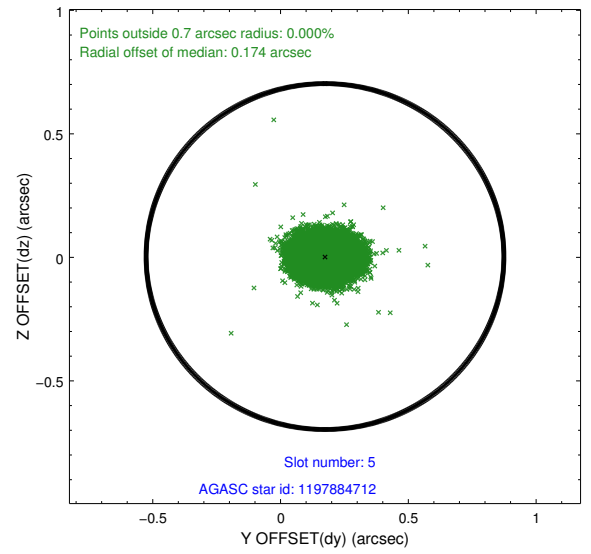
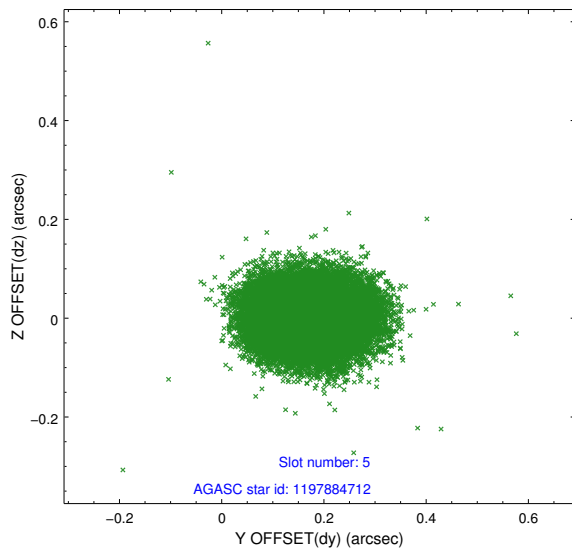
2.4.2 Slot 4



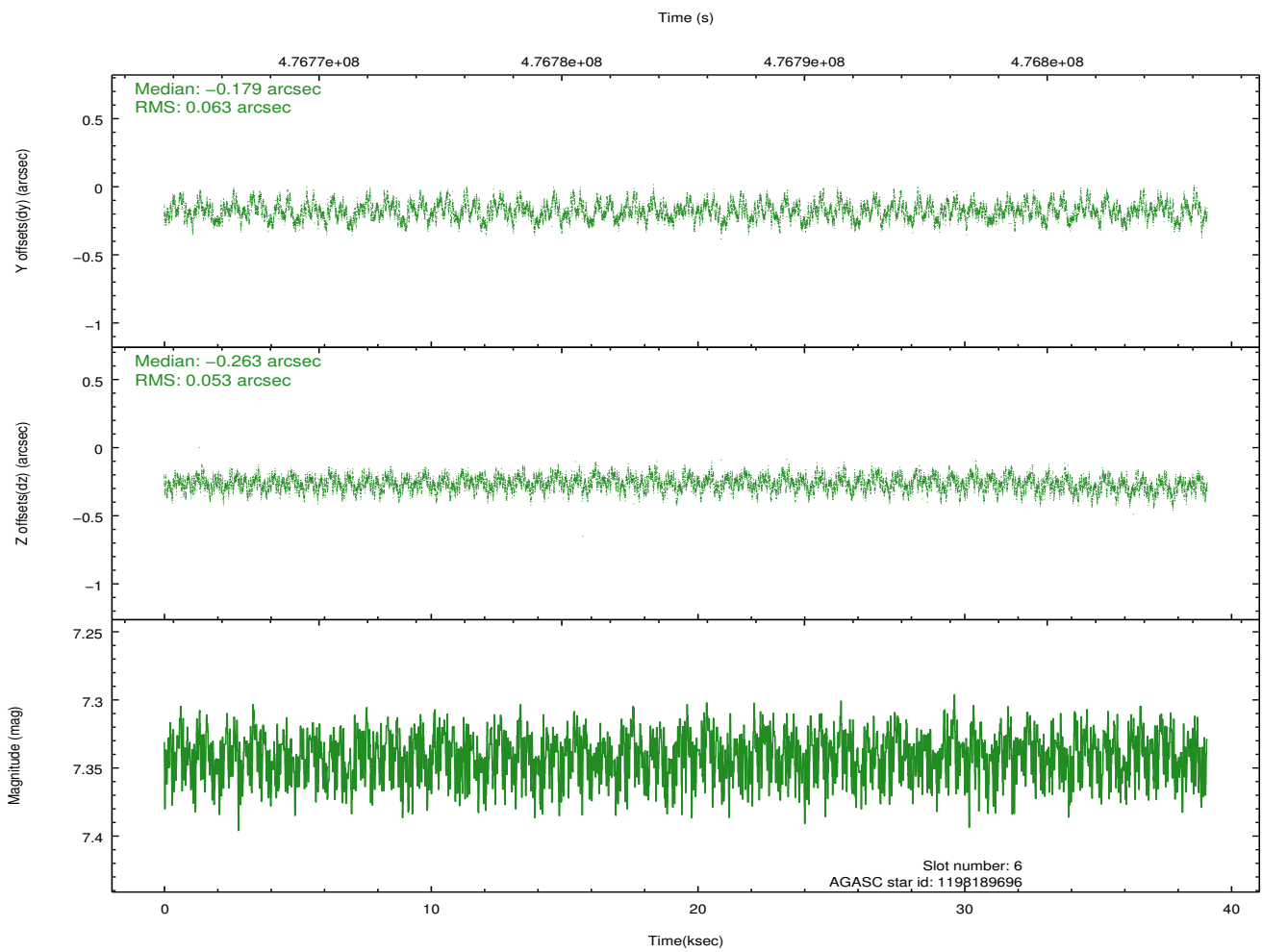
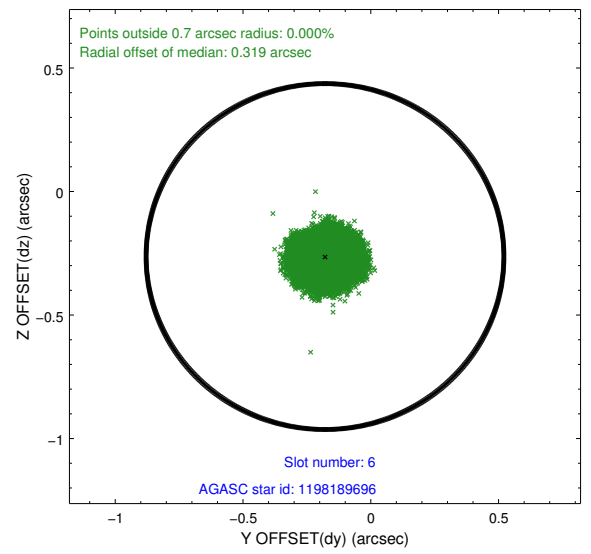
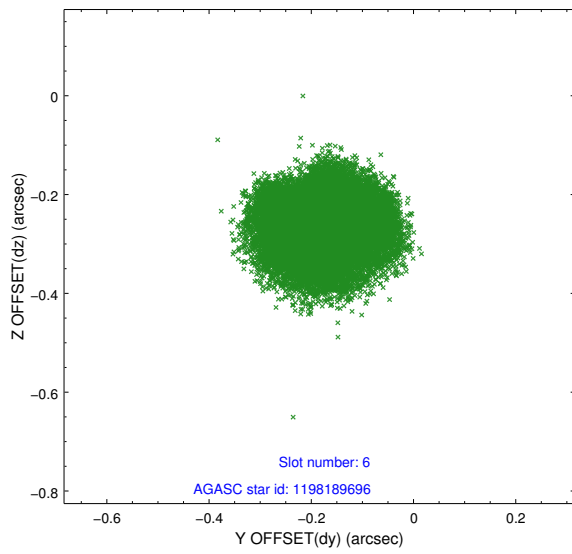
Time (s)



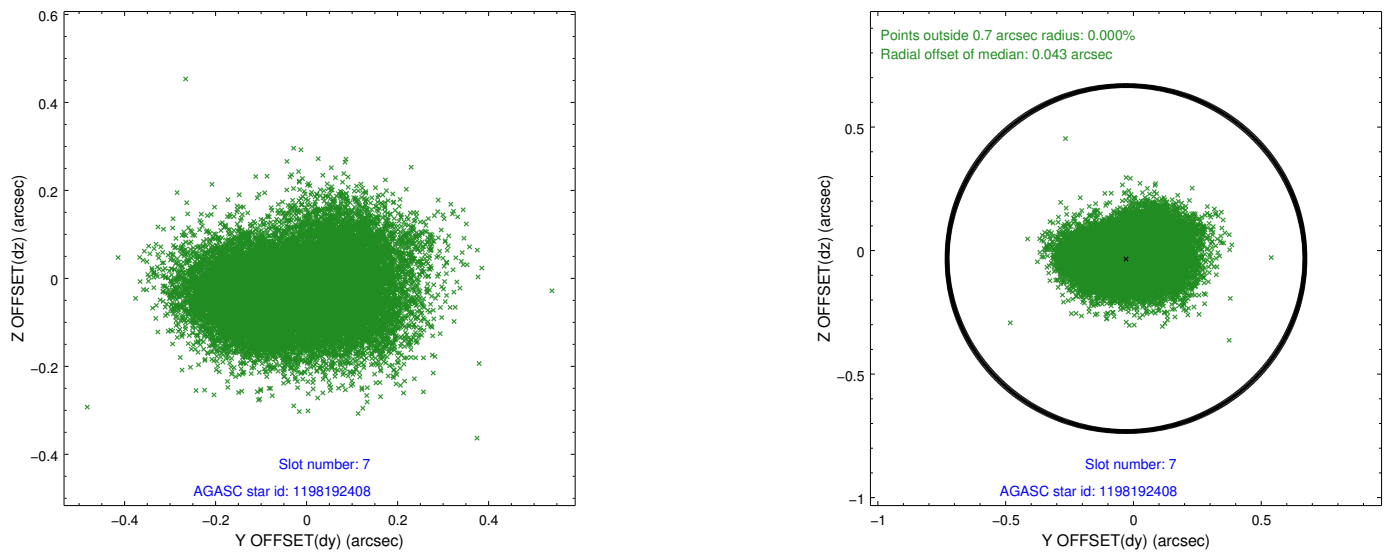
2.4.3 Slot 5



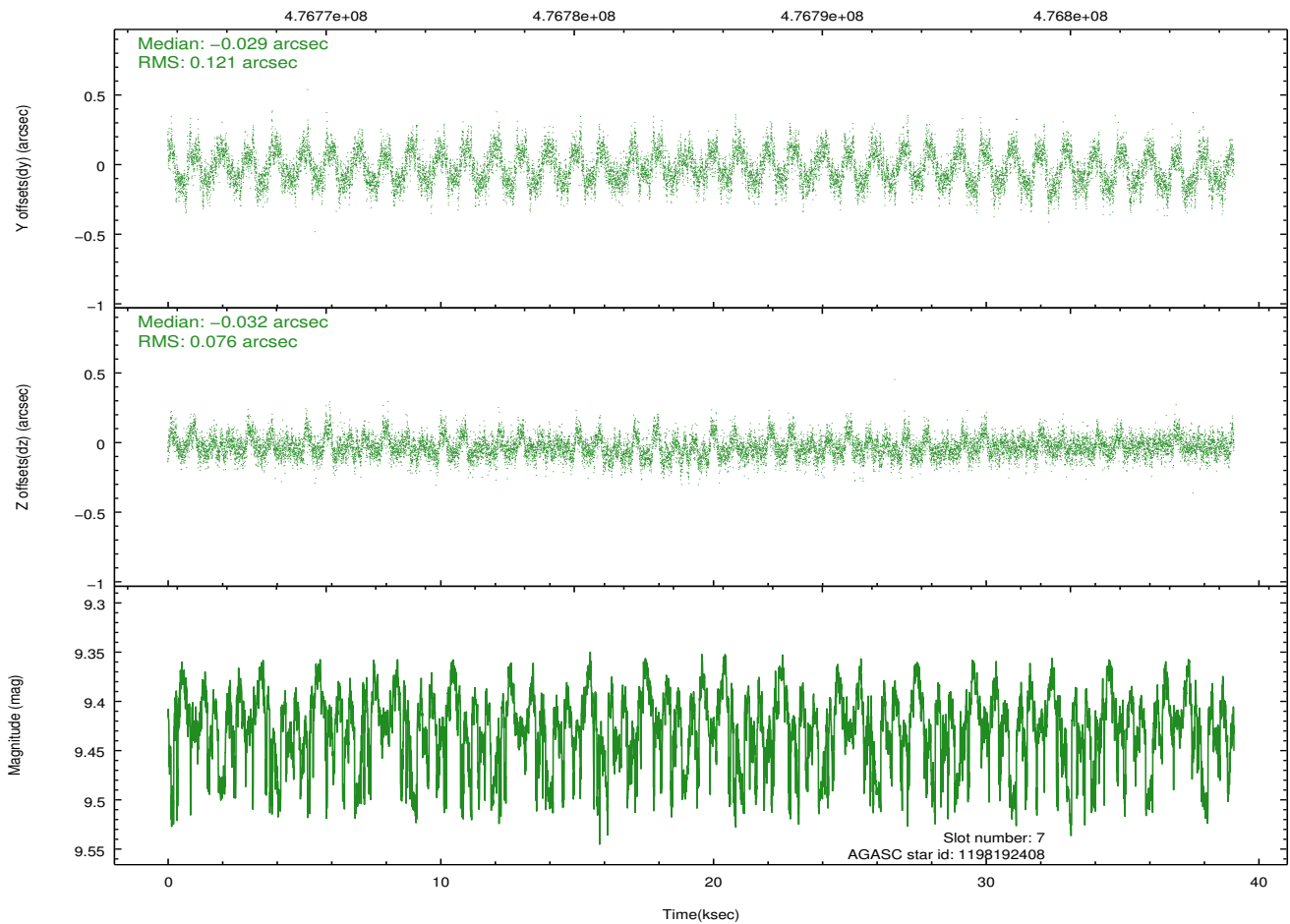
2.4.4 Slot 6



2.4.5 Slot 7

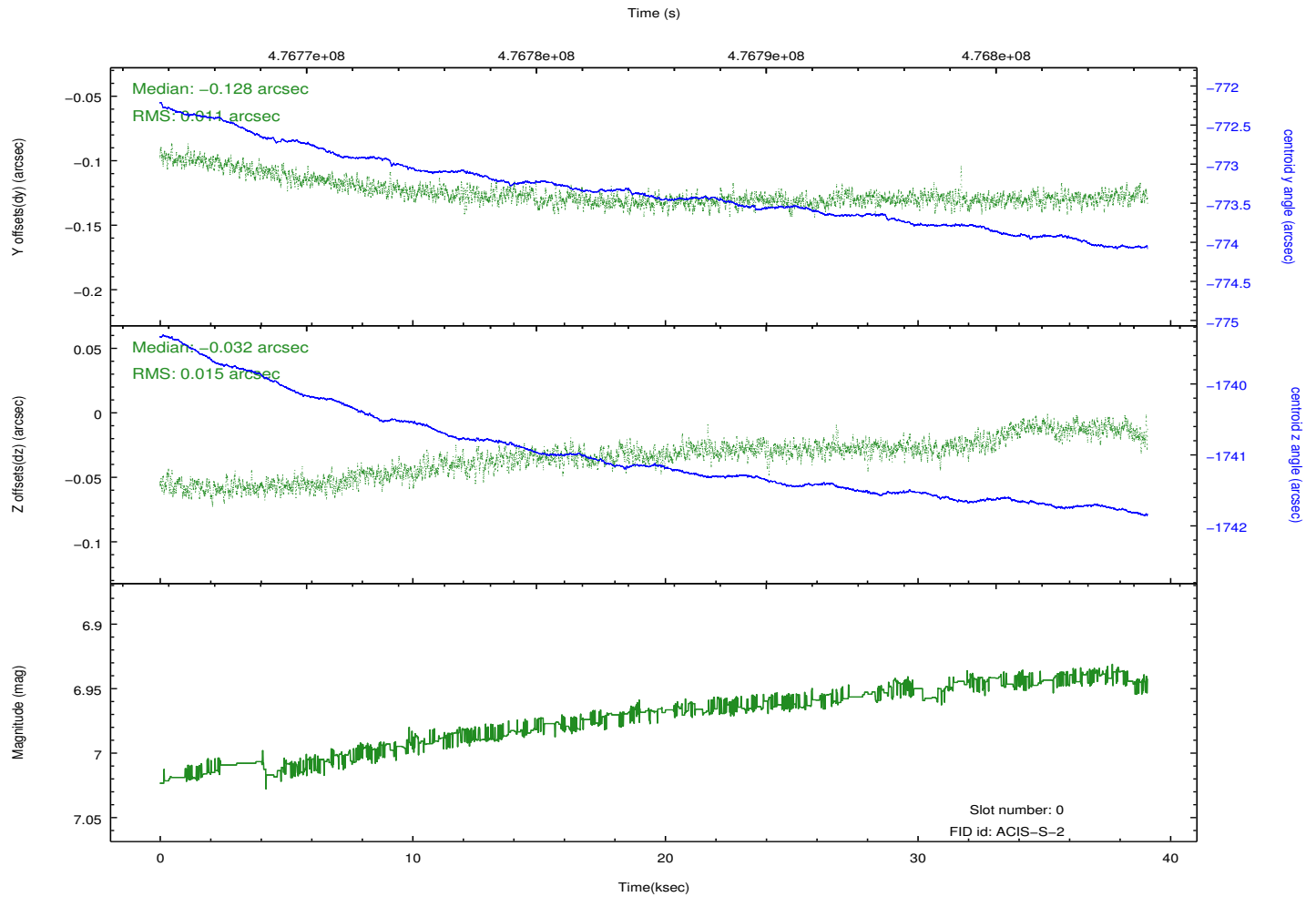
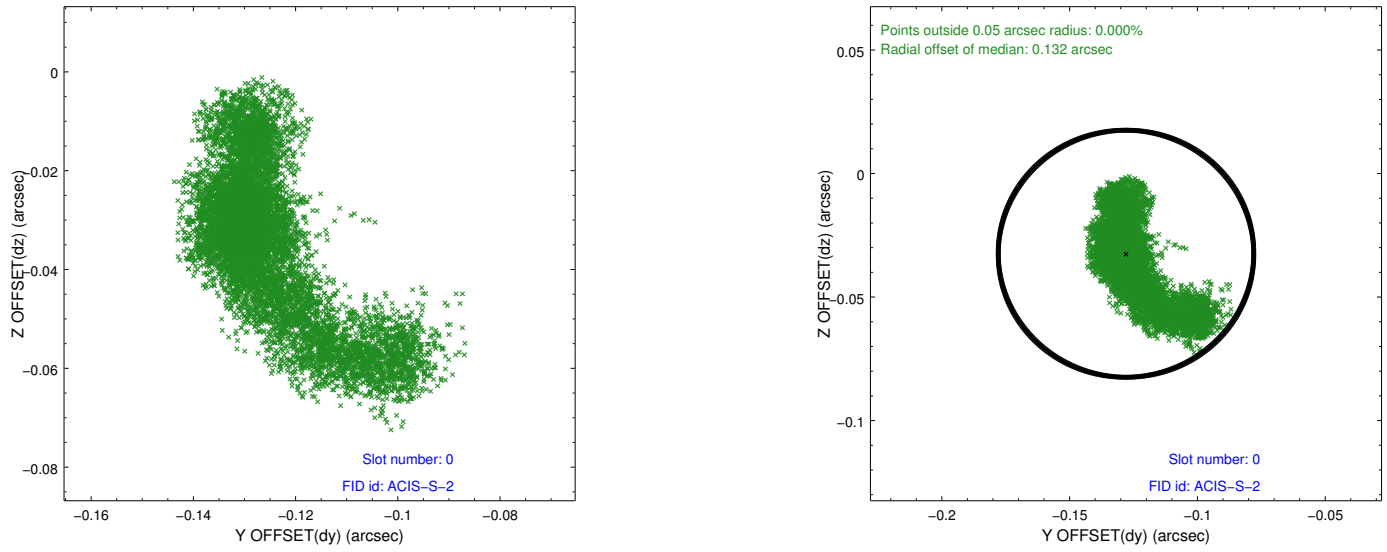


Time (s)

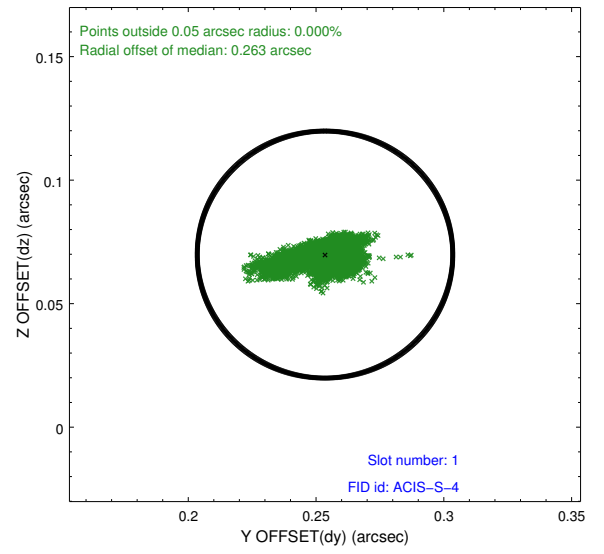
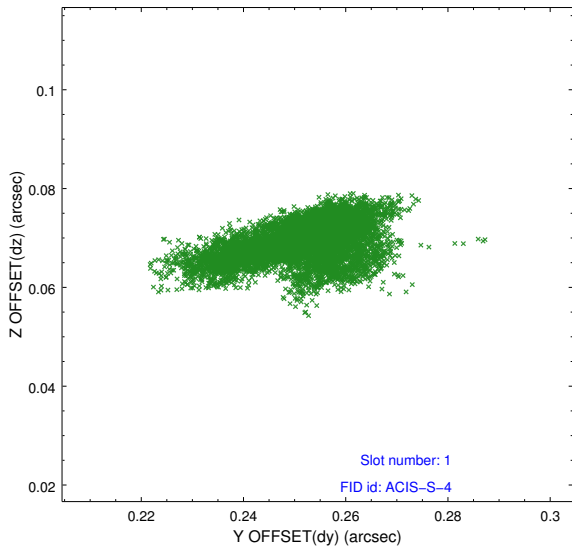


2.5 FID Slots

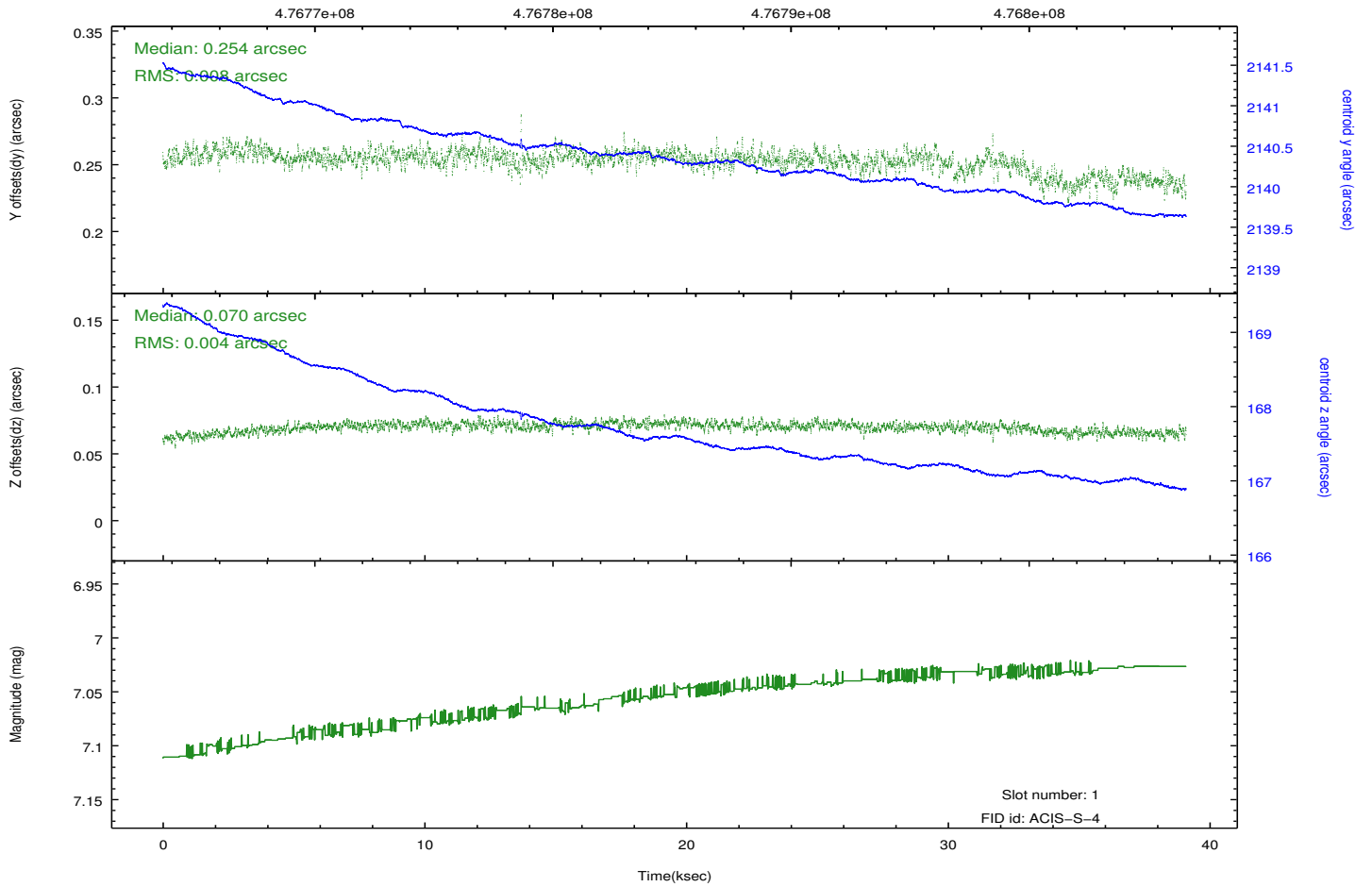
2.5.1 Slot 0



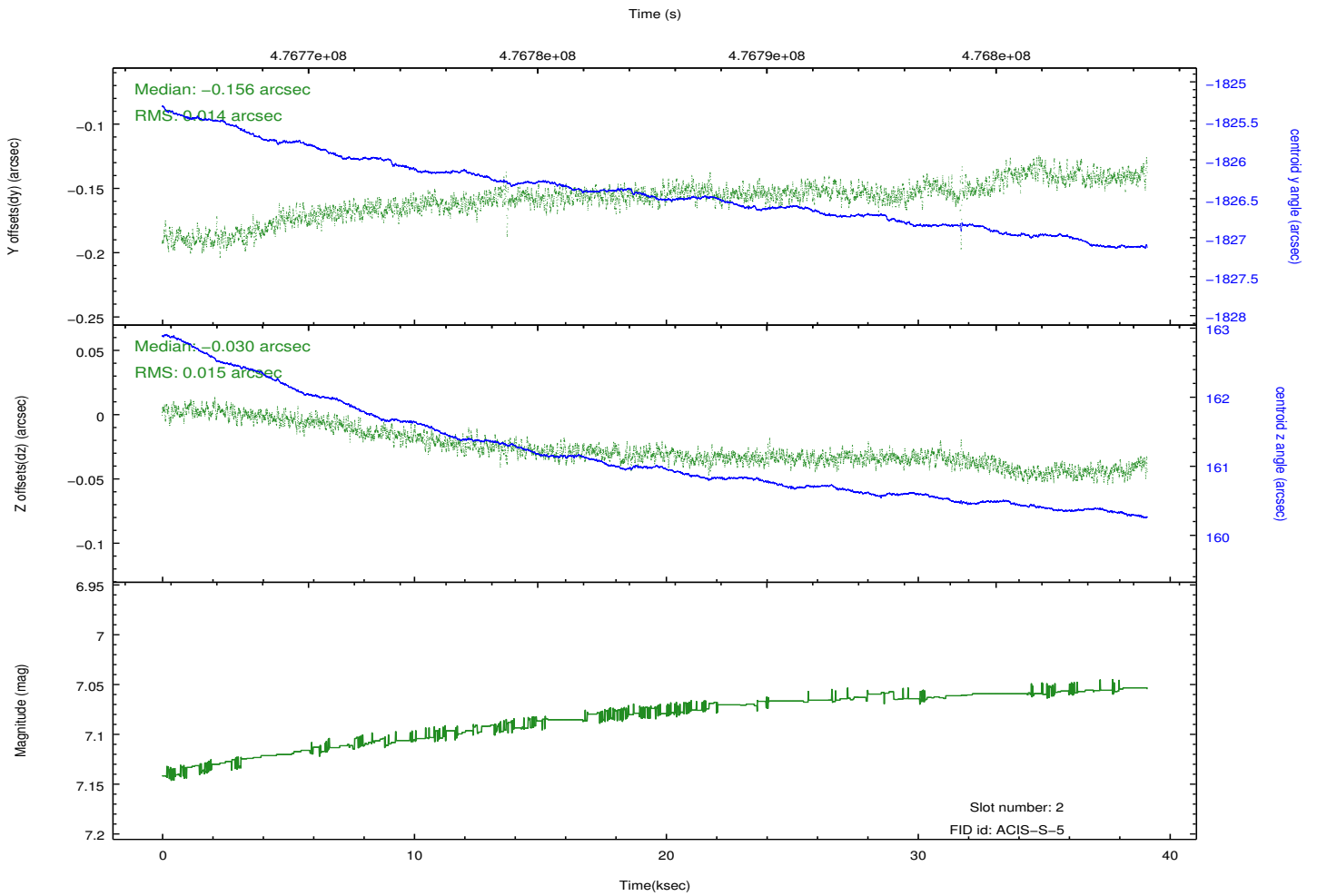
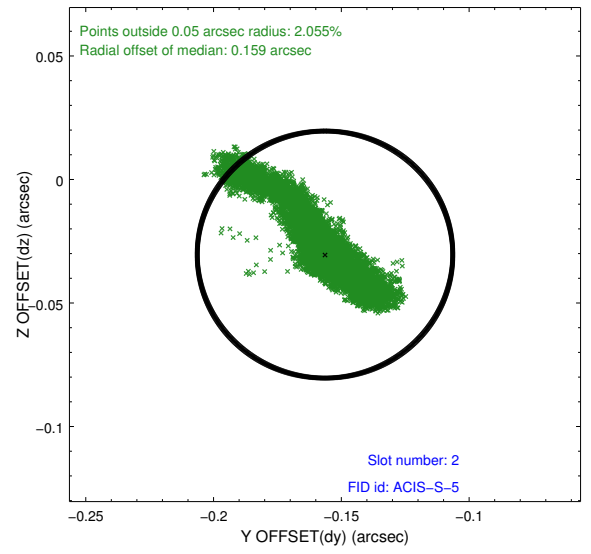
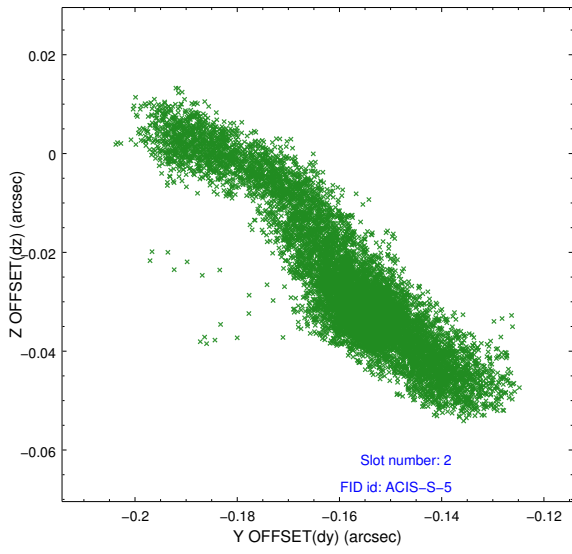
2.5.2 Slot 1



Time (s)



2.5.3 Slot 2



A Summary

A.1 Status

V&V Scientist	Beth Sundheim
V&V Date (YYYY-MM-DD)	2014.12.09
V&V Edition	1
V&V Disposition and Status	OK
V&V Charge Time	39.069300300479

A.2 Comments

These data have been reprocessed with new aspect alignment calibration files that correct small mean offsets (up to 0.4 arcsecs) and improve overall astrometric accuracy. The new calibration was determined using data from the time period being reprocessed and was performed using cross-correlation of X-ray sources with radio and optical counterparts.