

# V&V Reference Report

## L2 ASCDS Version : 8.4.5

Observation 13903 - L2 Version 1  
Chandra X-Ray Center

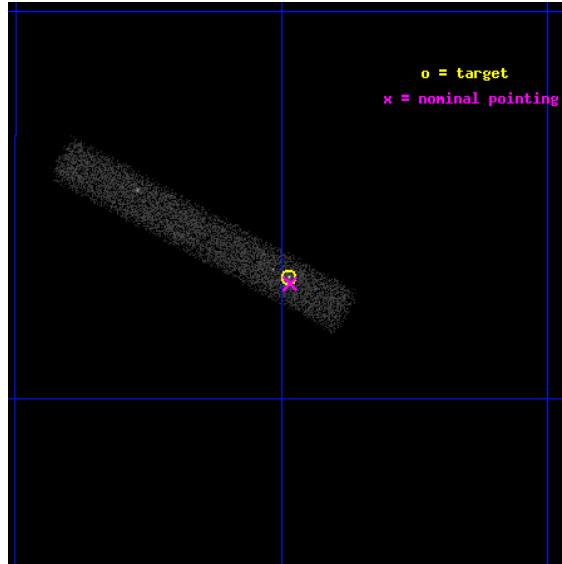
L2 Processing Date : Jul 1 2012

## Contents

<b>1</b>	<b>Front</b>	<b>2</b>
<b>2</b>	<b>OBI</b>	<b>3</b>
2.1	OBI . . . . .	3
2.1.1	Images . . . . .	3
2.1.2	Bias . . . . .	3
2.1.3	Parameters . . . . .	4
2.1.4	Events . . . . .	4
2.2	Compared Parameters . . . . .	5
2.3	Aspect . . . . .	6
2.4	Star Slots . . . . .	9
2.4.1	Slot 3 . . . . .	9
2.4.2	Slot 4 . . . . .	10
2.4.3	Slot 5 . . . . .	11
2.4.4	Slot 6 . . . . .	12
2.4.5	Slot 7 . . . . .	13
2.5	FID Slots . . . . .	14
2.5.1	Slot 0 . . . . .	14
2.5.2	Slot 1 . . . . .	15
2.5.3	Slot 2 . . . . .	16
<b>A</b>	<b>Summary</b>	<b>17</b>
A.1	Status . . . . .	17
A.2	Comments . . . . .	17

# 1 Front

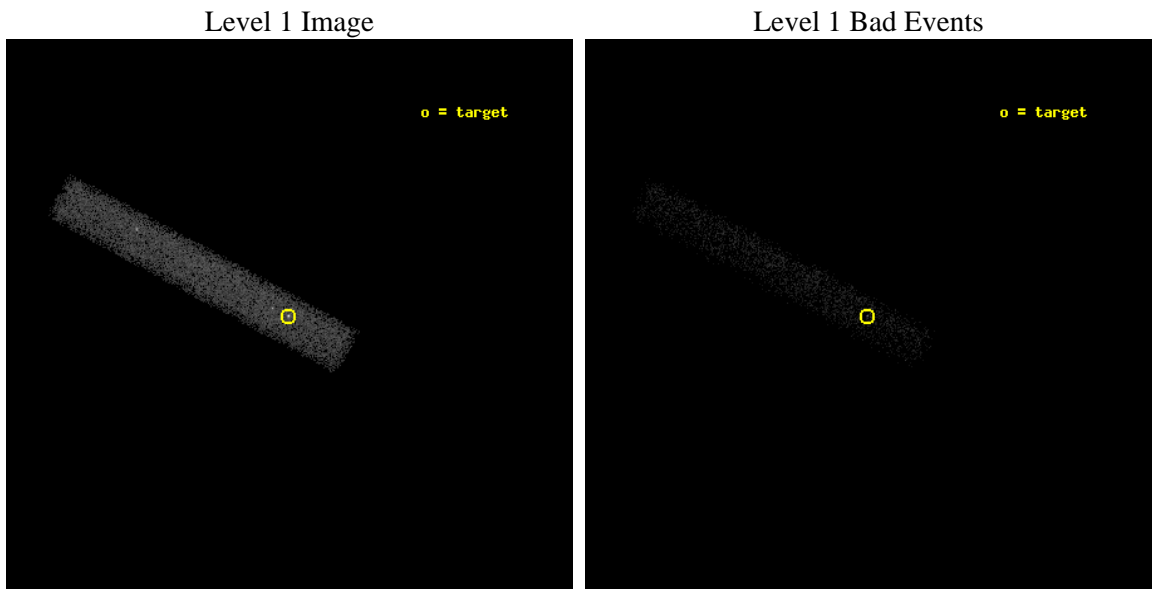
seq_num	702628	Sequence number
obs_id	13903	Observation id
title	CHANDRA SURVEY OF DUAL ACTIVATION IN HARD X-RAY SELECTED MERGING AGN HOSTS	Proposal title
observer	Dr. Richard Mushotzky	Principal investigator
object	2MASX J17085915+2153082	Source name
dtcycle	0	&#160
cycle	P	events from which exps? Prim/Second/Both
ra_targ	257.24625	Observer's specified target RA [deg]
dec_targ	21.885583	Observer's specified target Dec [deg]
ra_nom	257.24602738696	Nominal RA [deg]
dec_nom	21.882560938196	Nominal Dec [deg]
roll_nom	208.22379074715	Nominal Roll [deg]
revision	1	Processing version of data
ontime	20069.198803782	Sum of GTIs [s]
livetime	18201.703975859	Livetime [s]
ontime7	20069.198803782	Sum of GTIs [s]
l2events	12864	Number of level 2 events



## 2 OBI

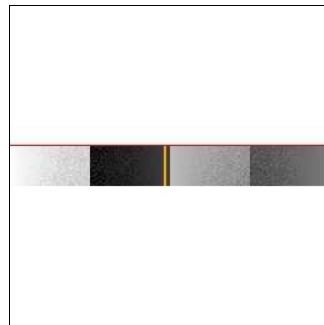
### 2.1 OBI

#### 2.1.1 Images



#### 2.1.2 Bias

Chip 7



### 2.1.3 Parameters

obi_num	1	Obi number	sched_exp_time	20000.000000	[s] Scheduled observation exposure time
ascdsver	8.4.5	Processing system revision	ontime	20069.198803782	Sum of GTIs [s]
caldbver	4.5.0	&#160	ontime7	20069.198803782	Sum of GTIs [s]
date	2012-07-02T01:20:50	Date and time of file creation	l1events	23680	Number of level 1 events
revision	1	Processing version of data			

### 2.1.4 Events

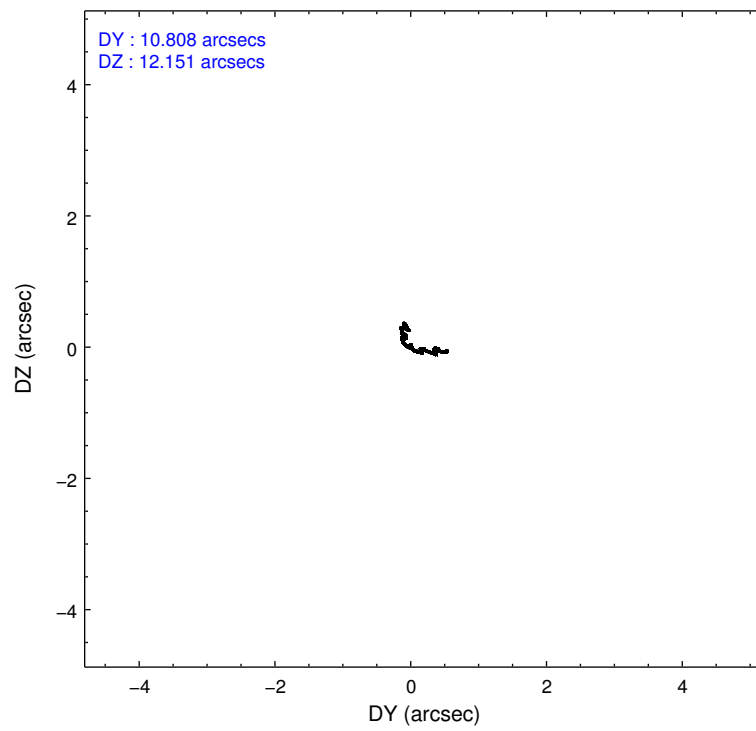
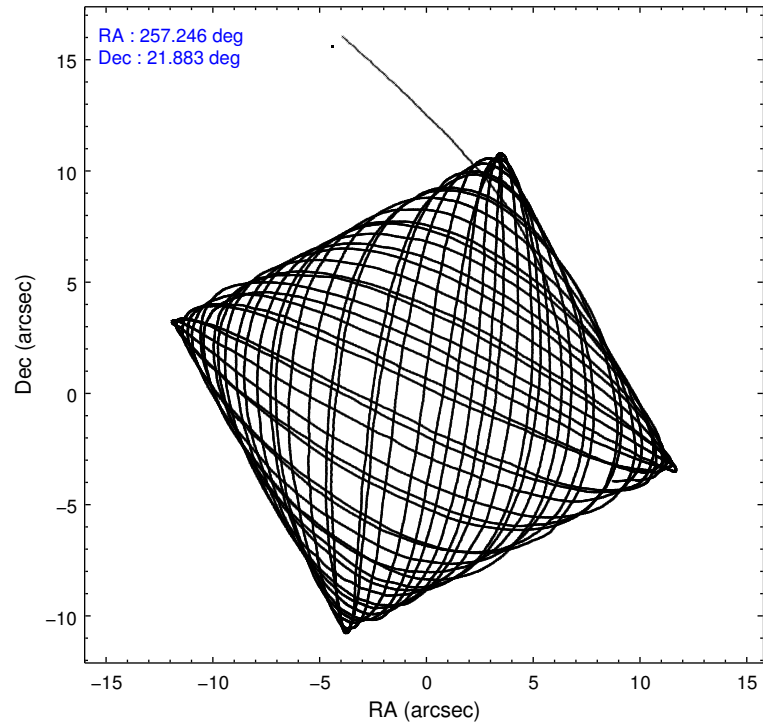
	<b>ccd 7</b>
level 1 events	23680
rejected events	10358
rejected %	43%

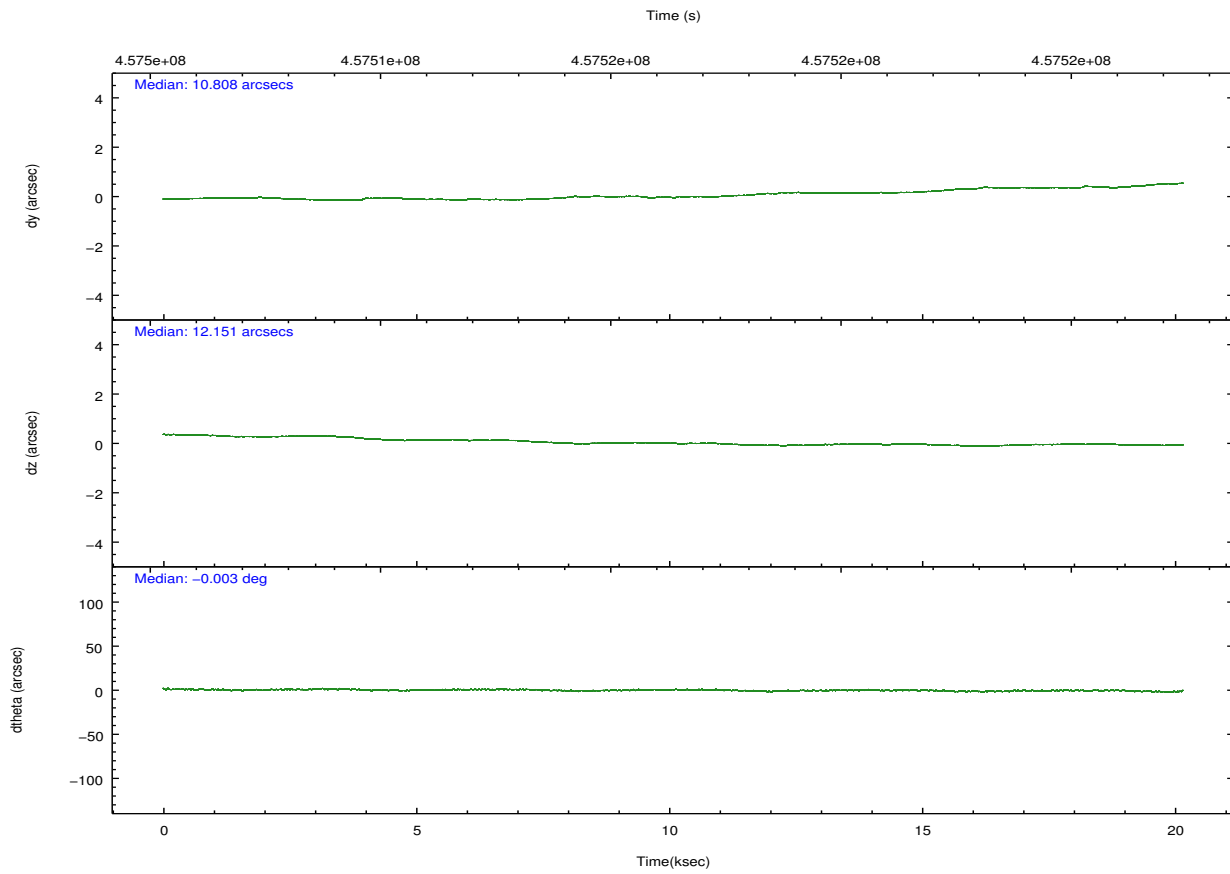
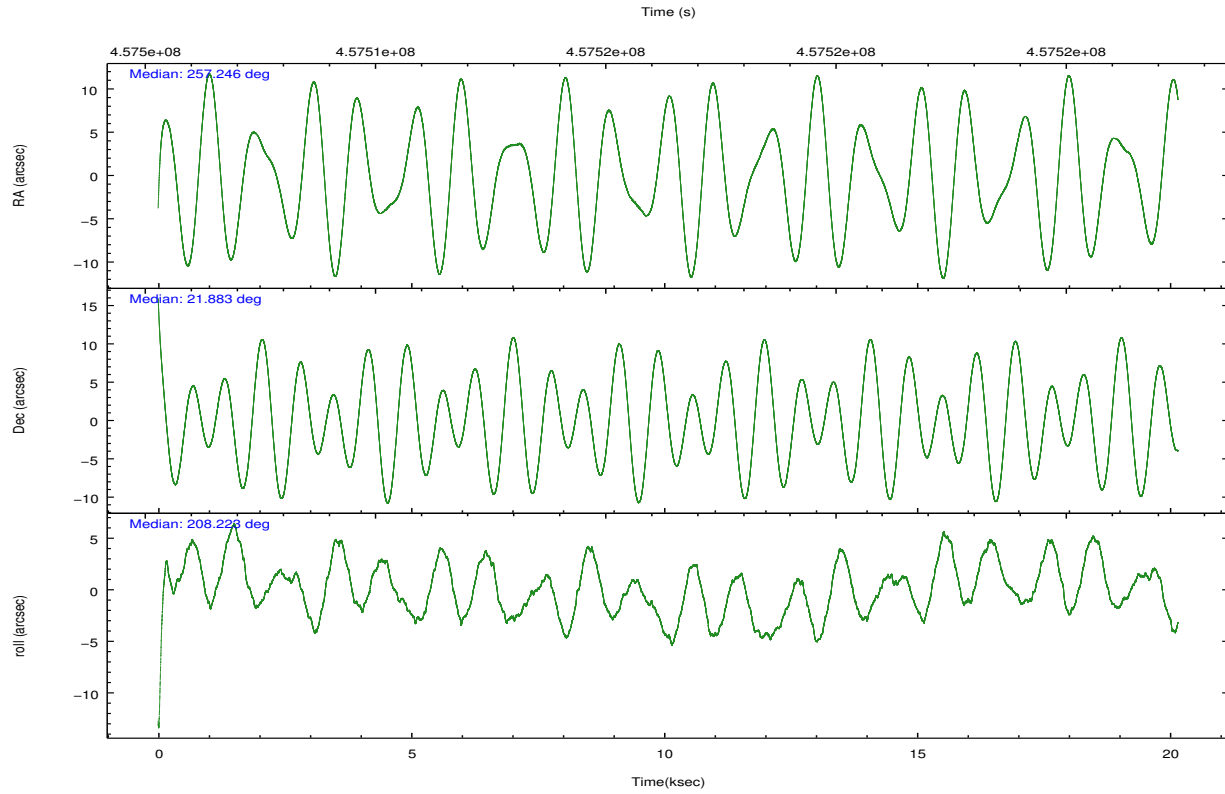
	<b>ccd 7</b>
grade 0 events	1922
	8%
grade 1 events	25
	0%
grade 2 events	2775
	11%
grade 3 events	1692
	7%
grade 4 events	1595
	6%
grade 5 events	2195
	9%
grade 6 events	5338
	22%
grade 7 events	8138
	34%

## 2.2 Compared Parameters

Parameter	Planned	Actual	Parameter	Planned	Actual
Instrument	ACIS	ACIS	Obspar format version number	7	7
Detector	ACIS-7	ACIS-7	Obspar file type	PREDICTED	ACTUAL
Grating	NONE	NONE	Obspar update status	NONE	UPDATED
Data mode	FAINT	FAINT	Number of optional ACIS chips dropped	0	0
Observation mode	POINTING	POINTING	On-chip summing requested	N	N
[deg] Pointing RA	257.261178	257.2460273869619	Subarray requested	CUSTOM	1/8
[deg] Pointing Dec	21.906002	21.88256093819609	Subarray start row	449	449
[deg] Pointing Roll	208.061520	208.2237907471459	Subarray row count	128	128
[mm] SIM focus pos	-0.684267	-0.6828225247311905	Alternating exposures requested	N	N
[mm] SIM defocus	0	0.001444936568705701	[s] Primary exposure time	0.000000	0.4
[mm] SIM translation stage pos	-190.132523	-190.1425803651734			
[mm] SIM translation stage offset	0	0.01005778216563158			
[s] Observation start time (MET)	457506417.184000	457505282.32728			
Observation start date	2012-07-01T05:05:50	2012-07-01T04:48:02			
[s] Observation end time (MET)	457526417.184000	457527386.45346			
Observation end date	2012-07-01T10:39:10	2012-07-01T10:56:26			
Read mode	TIMED	TIMED			

## 2.3 Aspect



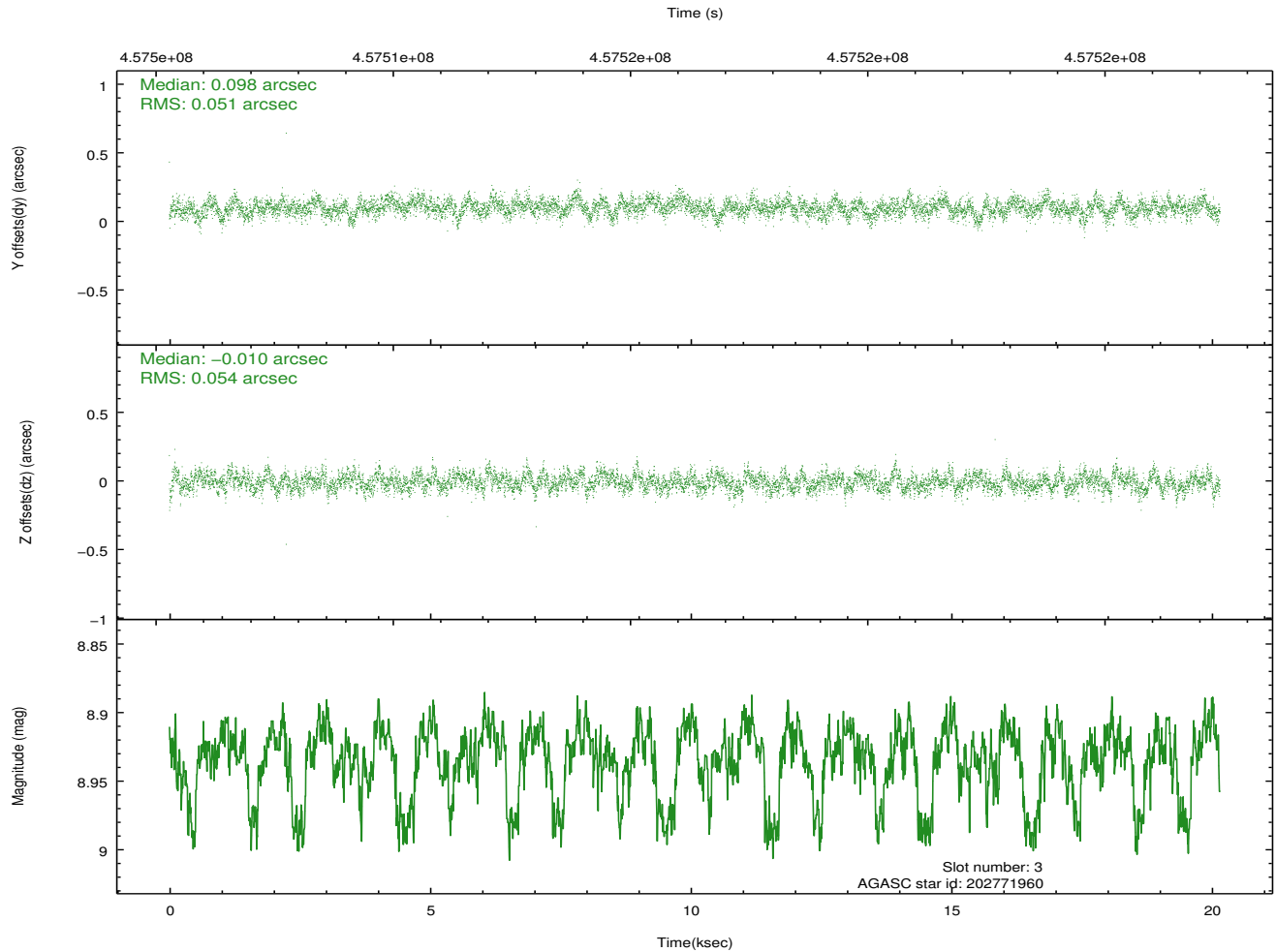
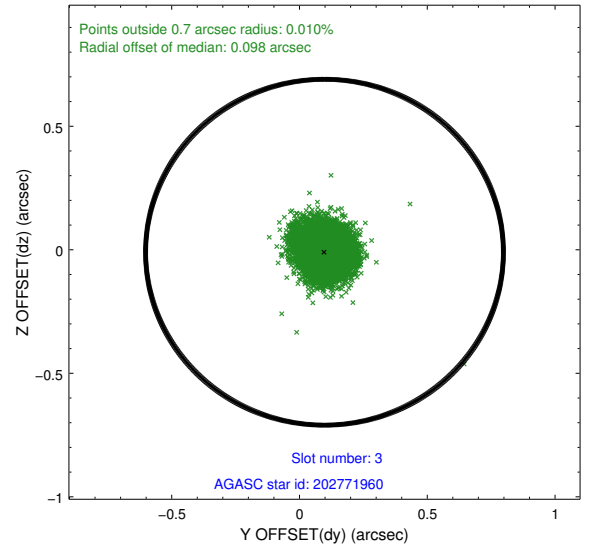
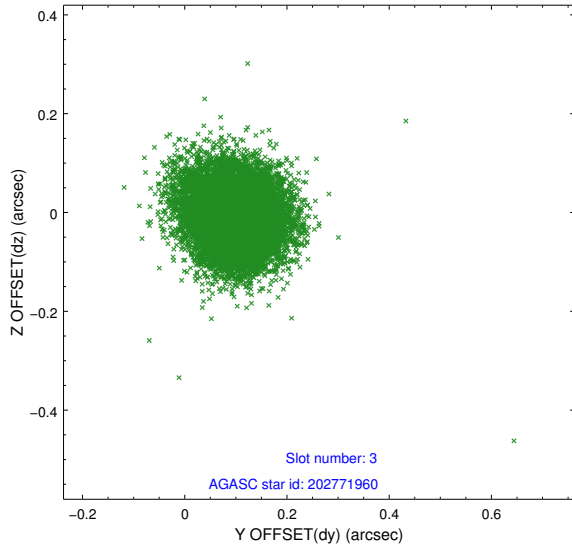


### Slot Statistics

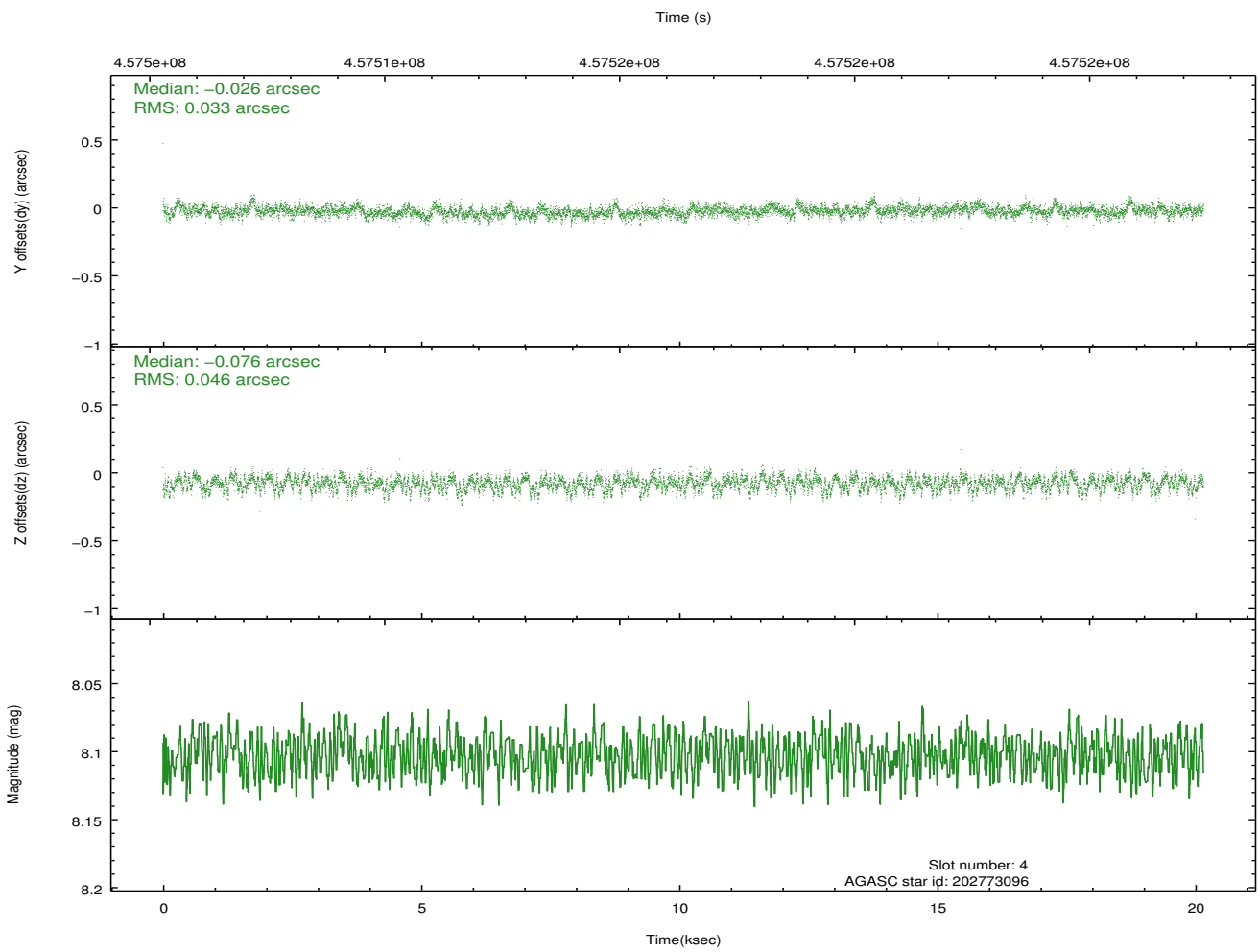
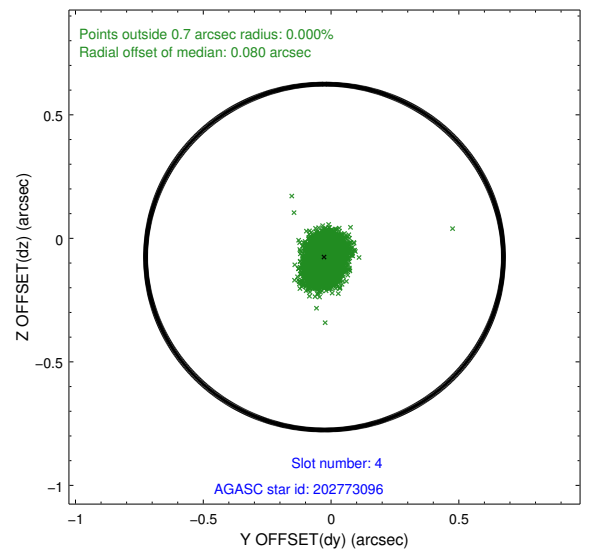
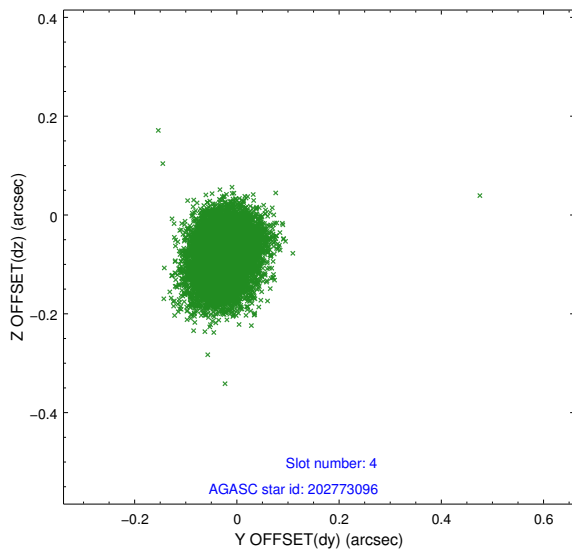
slot	status	id	mag	n_pts	med_dy	med_dz	dr1	dr2	ra	dec	mean_y	mean_z
0	FID	ACIS-S-2	6.96	4916	-0.063	-0.038	0.011	0.017	0.000000	0.000000	-763.83	-1733.49
1	FID	ACIS-S-4	7.05	4916	0.202	0.040	0.012	0.021	0.000000	0.000000	2149.65	174.85
2	FID	ACIS-S-5	7.08	4917	-0.171	0.006	0.012	0.019	0.000000	0.000000	-1816.52	168.74
3	GUIDE	202771960	8.93	9821	0.098	-0.010	0.079	0.127	256.976688	21.920653	813.93	-493.95
4	GUIDE	202773096	8.10	9835	-0.026	-0.076	0.060	0.099	257.339384	22.474471	-1191.47	-1683.80
5	GUIDE	202773832	8.65	9828	0.102	0.070	0.062	0.104	256.883984	22.069091	834.20	-1111.30
6	GUIDE	202776712	7.91	9833	-0.137	0.025	0.059	0.094	257.537829	22.403964	-1655.65	-1149.38
7	GUIDE	202779912	9.35	9826	-0.037	-0.008	0.095	0.159	256.704290	22.002310	1476.04	-1183.22

## 2.4 Star Slots

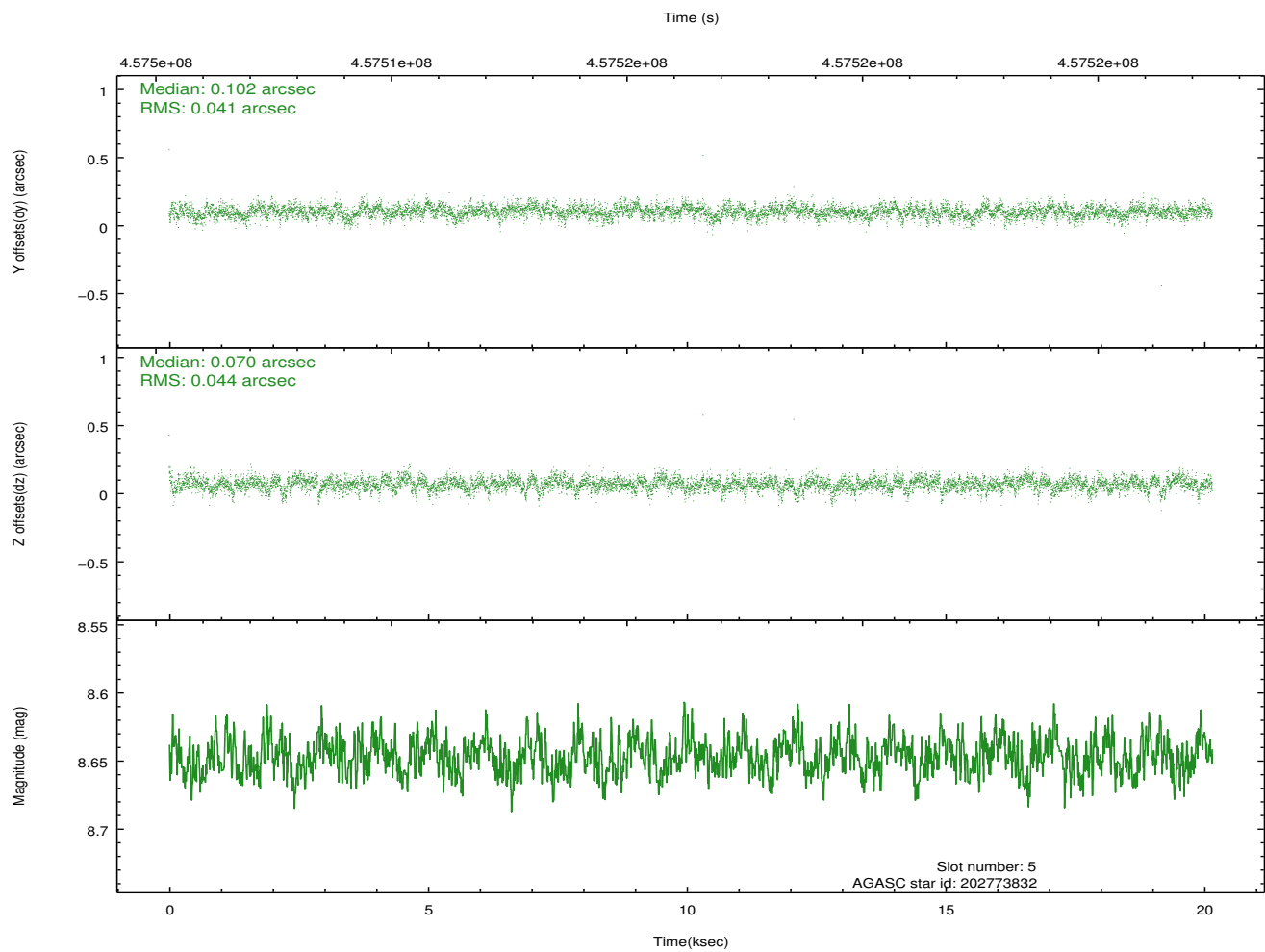
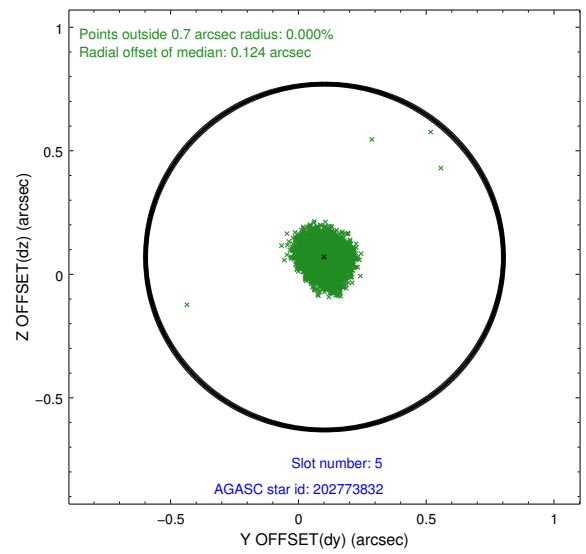
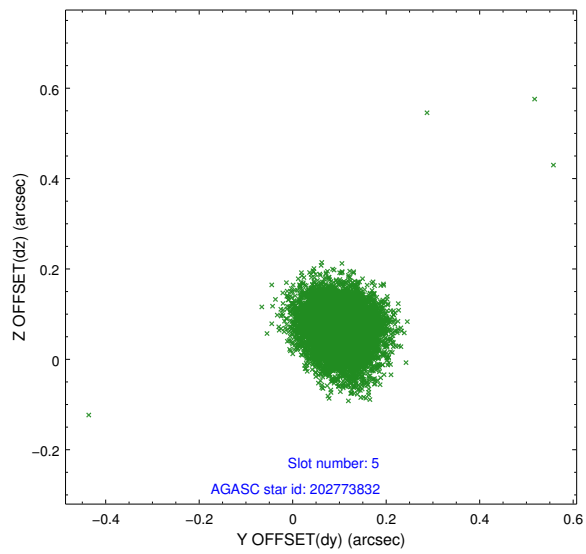
### 2.4.1 Slot 3



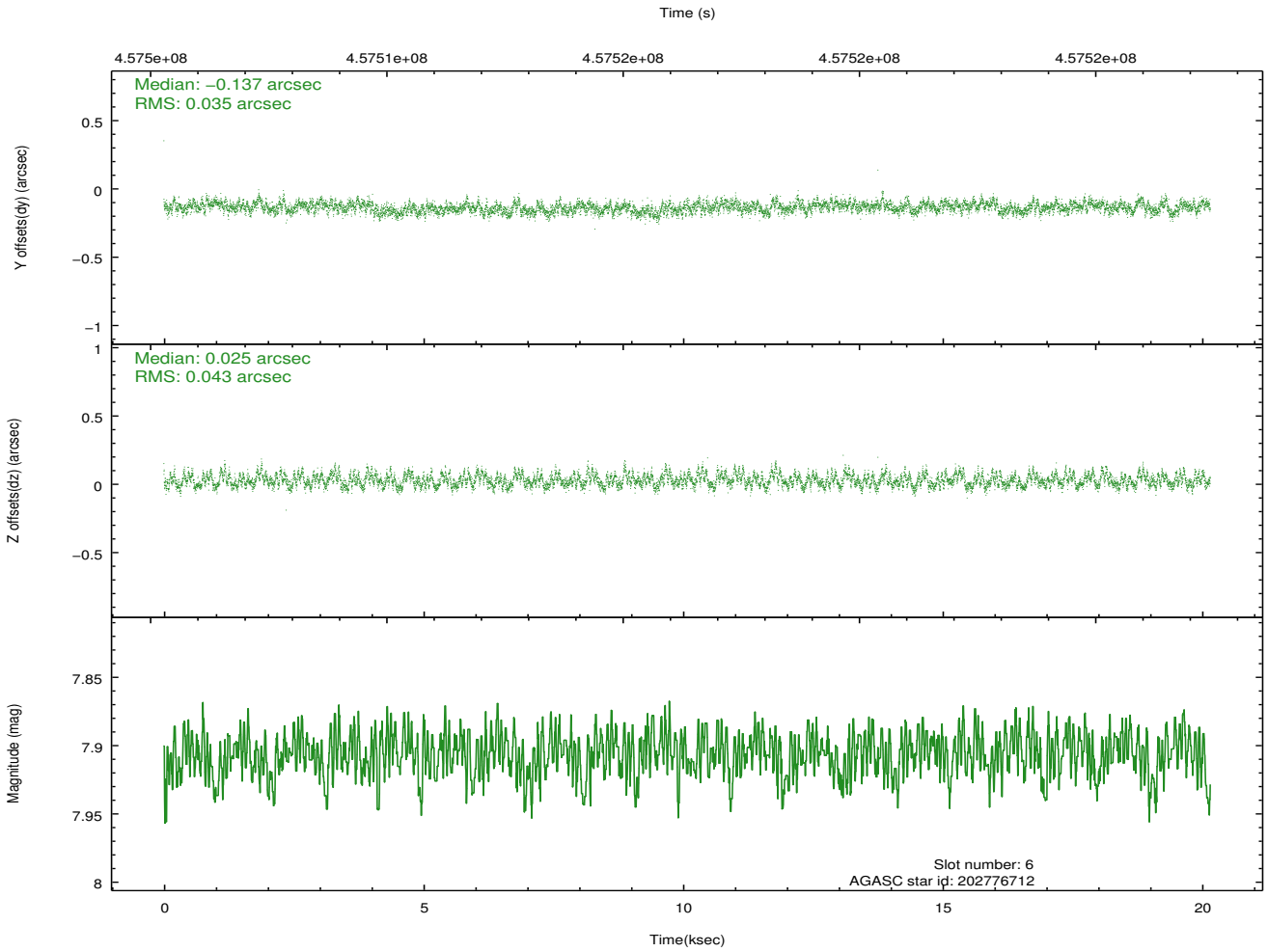
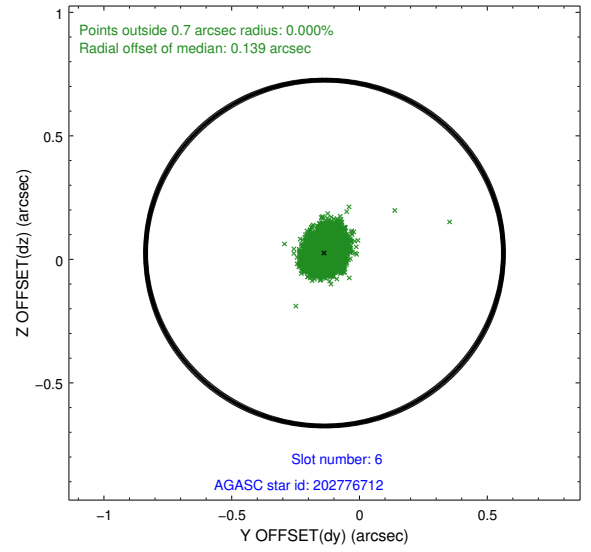
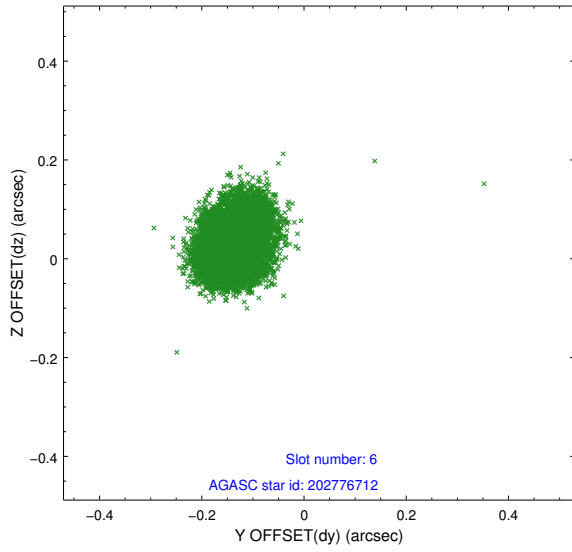
## 2.4.2 Slot 4



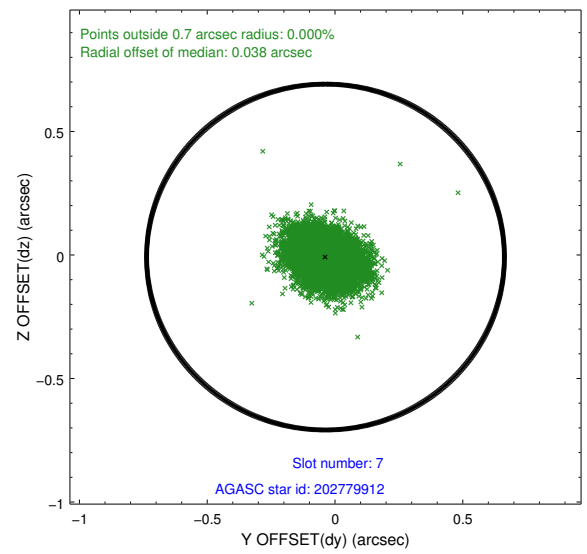
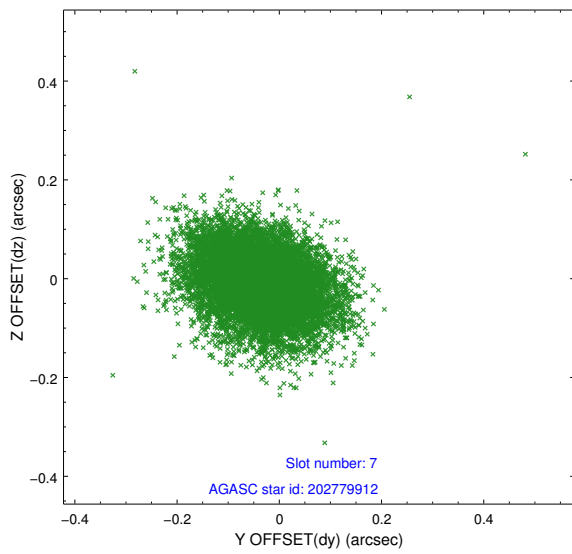
### 2.4.3 Slot 5



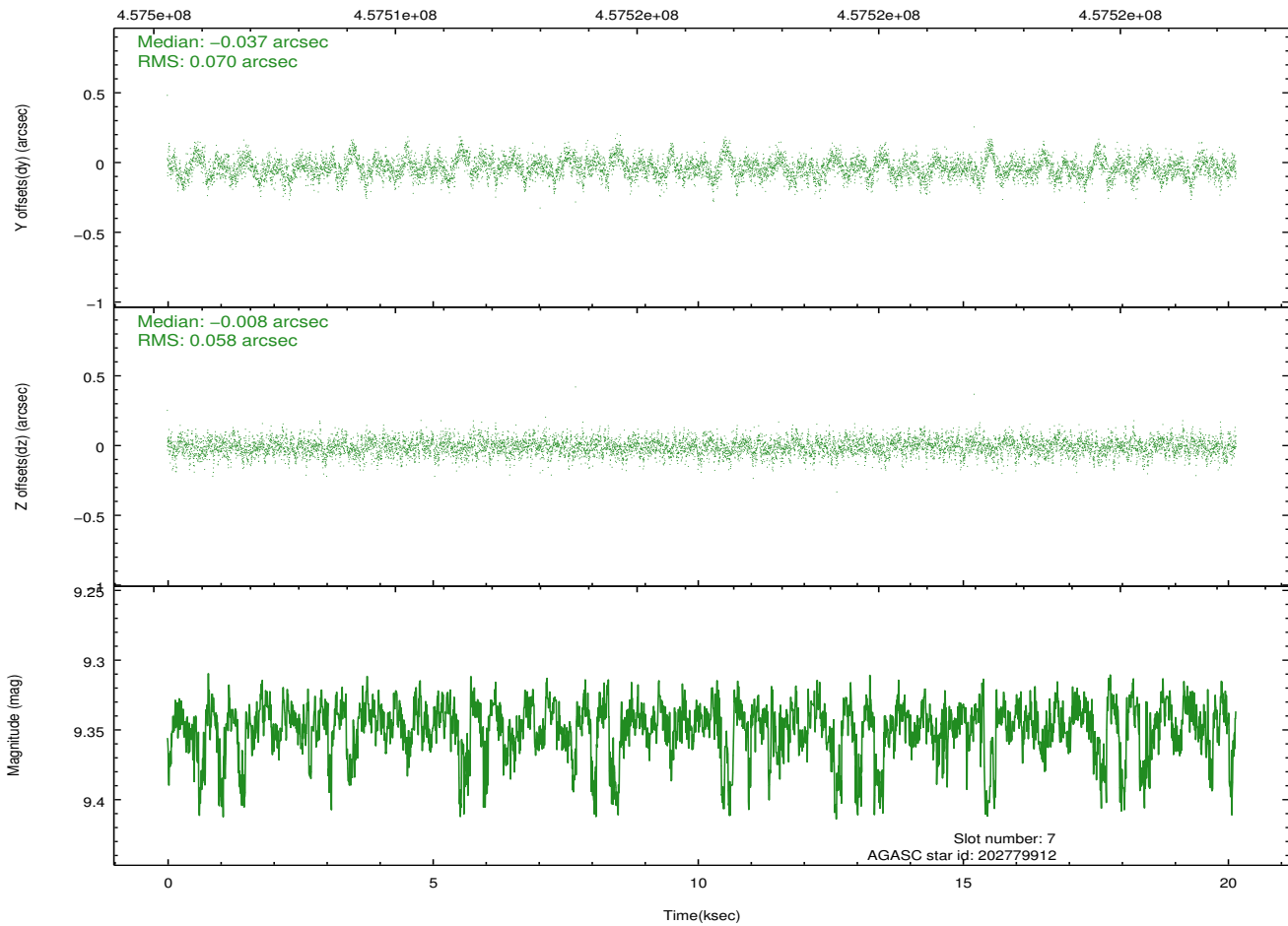
### 2.4.4 Slot 6



## 2.4.5 Slot 7

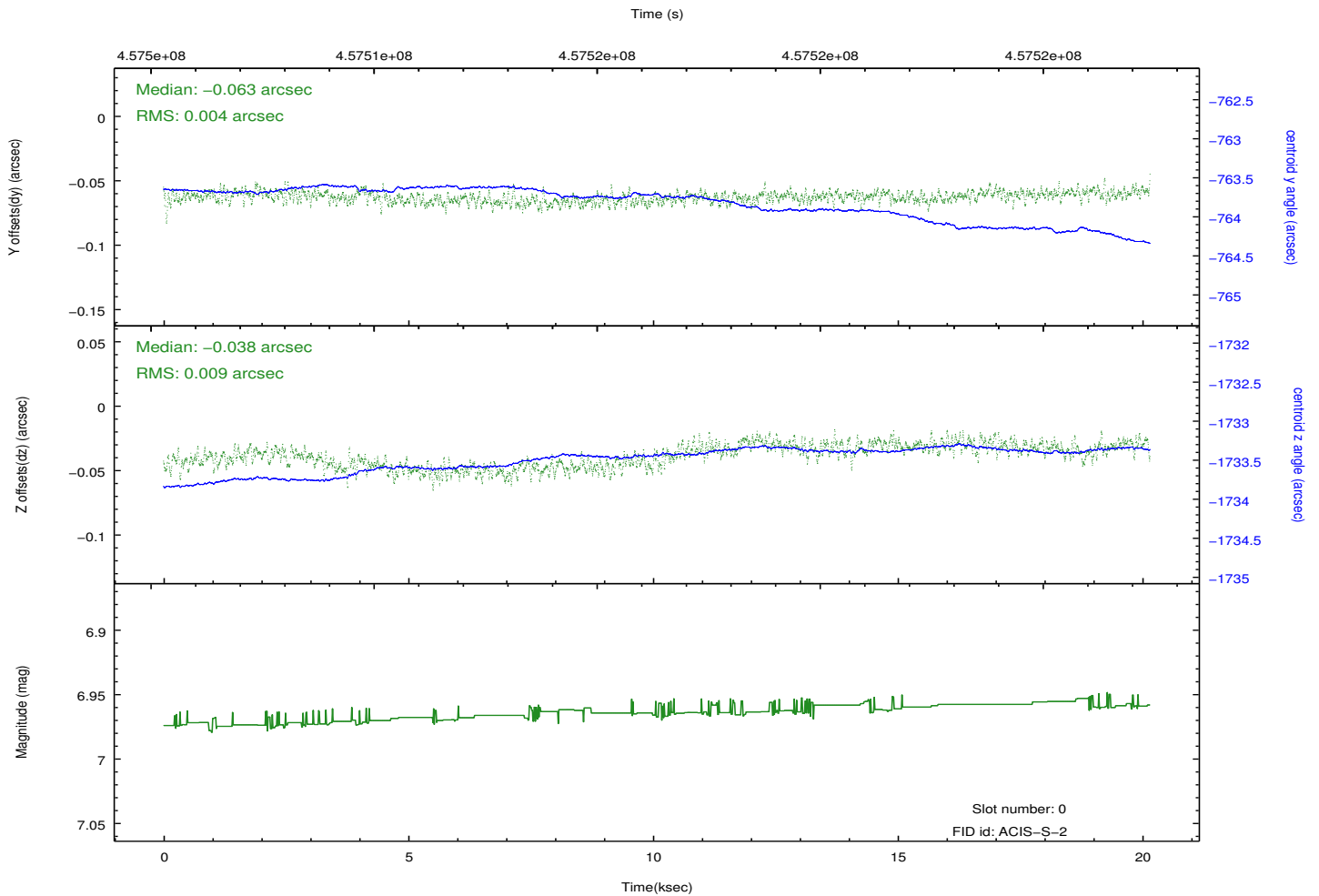
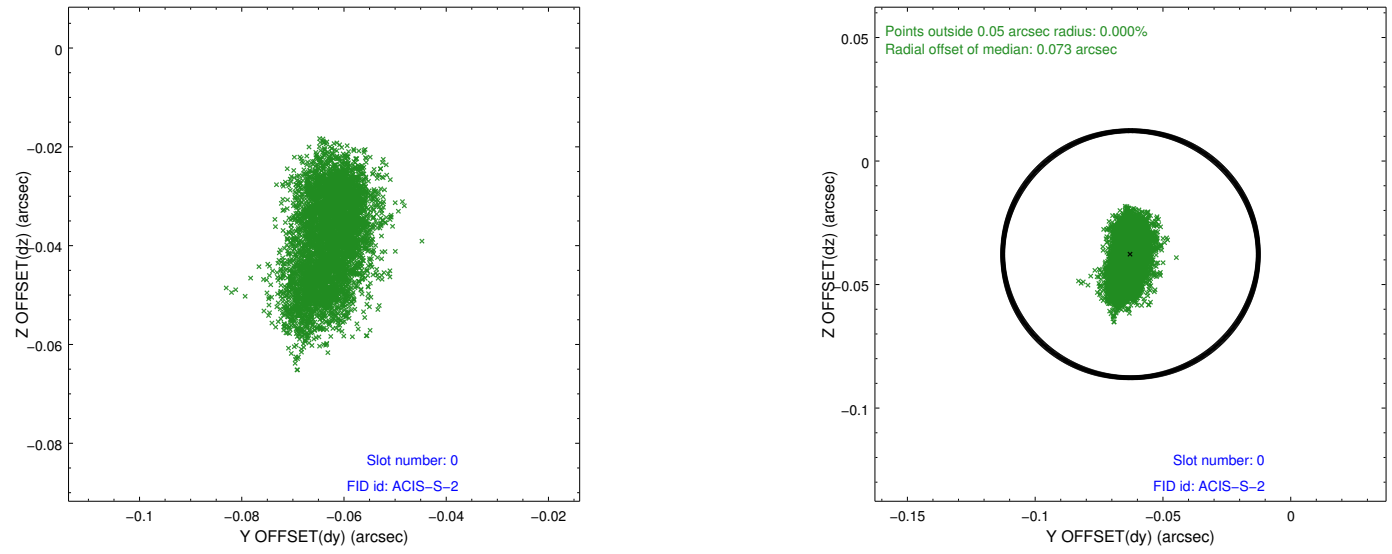


Time (s)

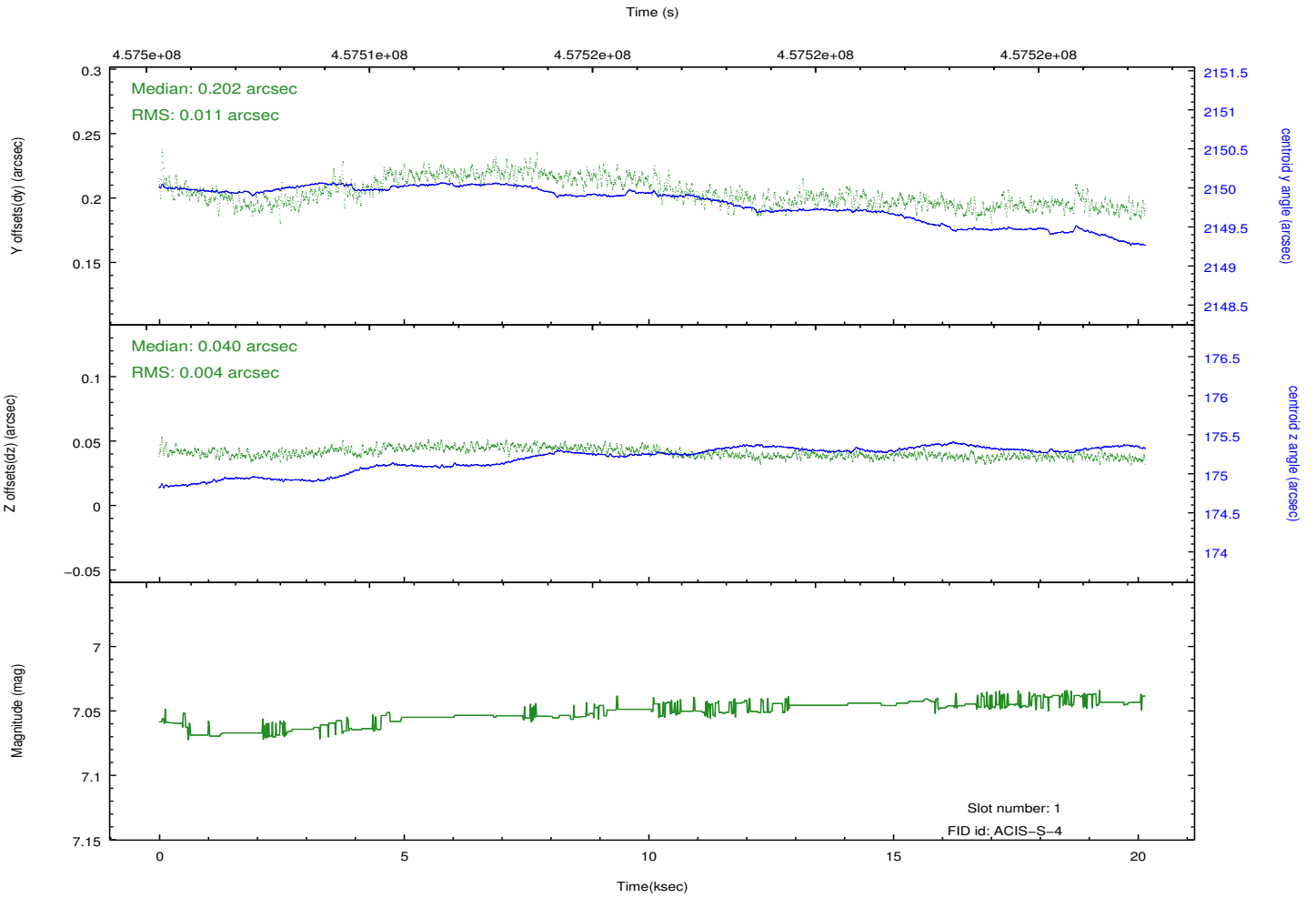
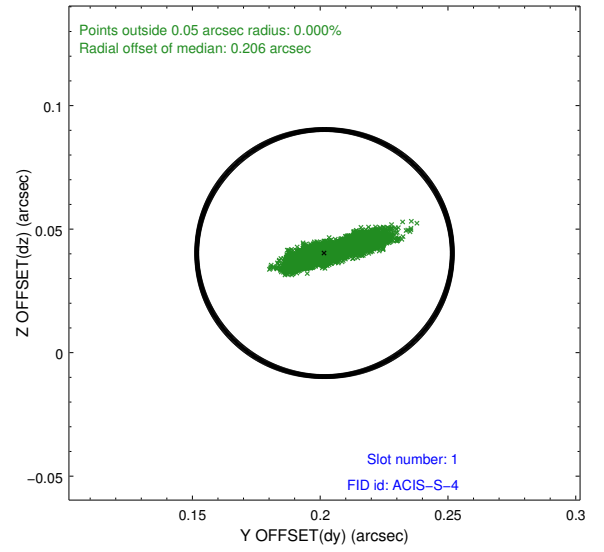
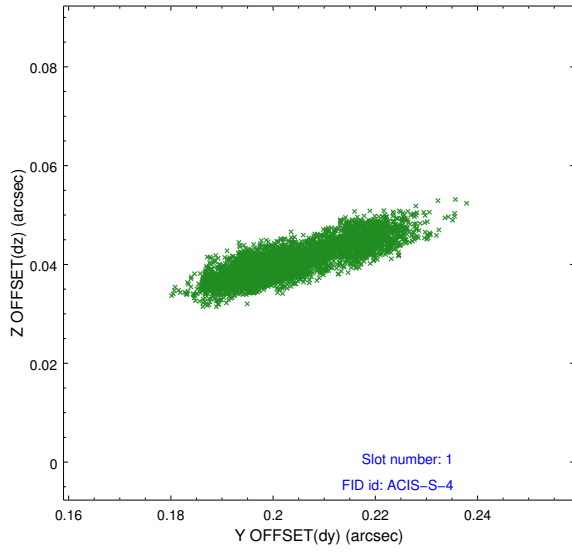


## 2.5 FID Slots

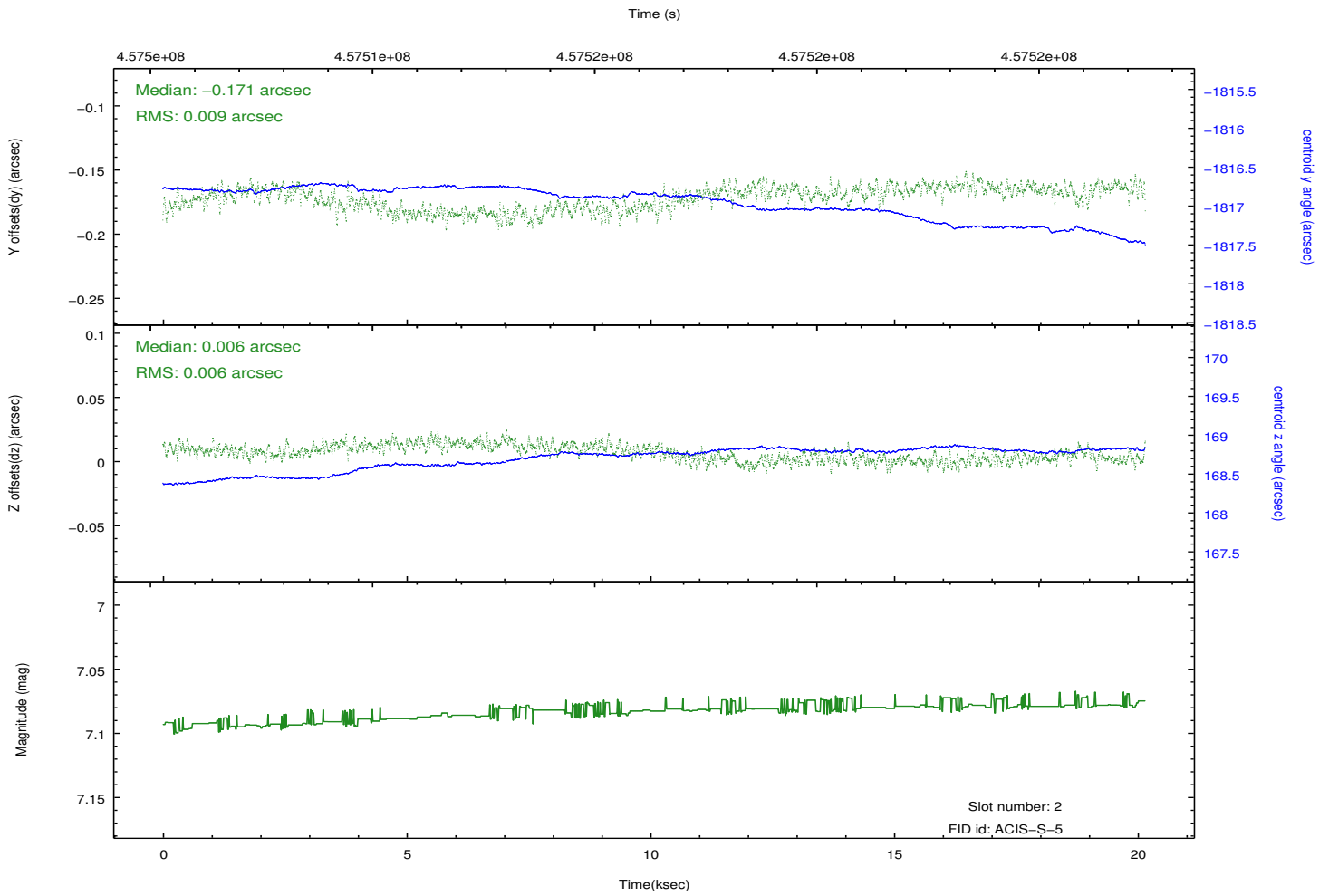
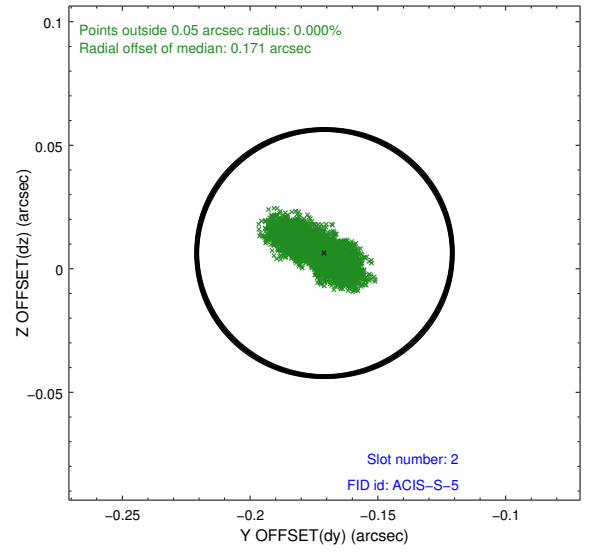
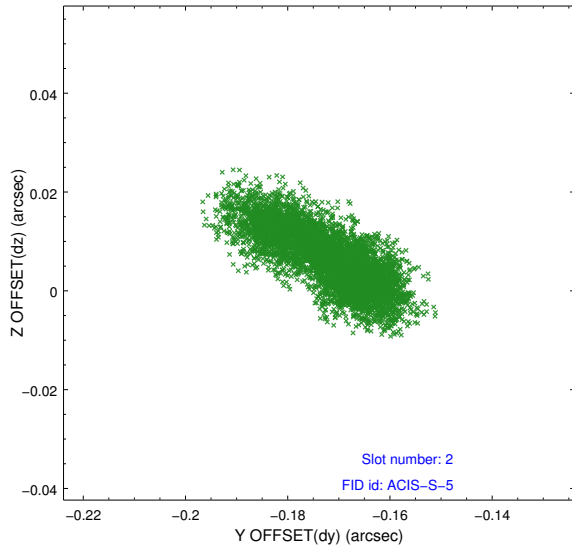
### 2.5.1 Slot 0



## 2.5.2 Slot 1



### 2.5.3 Slot 2



# A Summary

## A.1 Status

V&V Scientist	Joy Nichols
V&V Date (YYYY-MM-DD)	2012.07.02
V&V Edition	1
V&V Disposition and Status	OK
V&V Charge Time	20.069198803782

## A.2 Comments