

V&V Reference Report

L2 ASCDS Version : 8.4.3

Observation 14053 - L2 Version 2
Chandra X-Ray Center

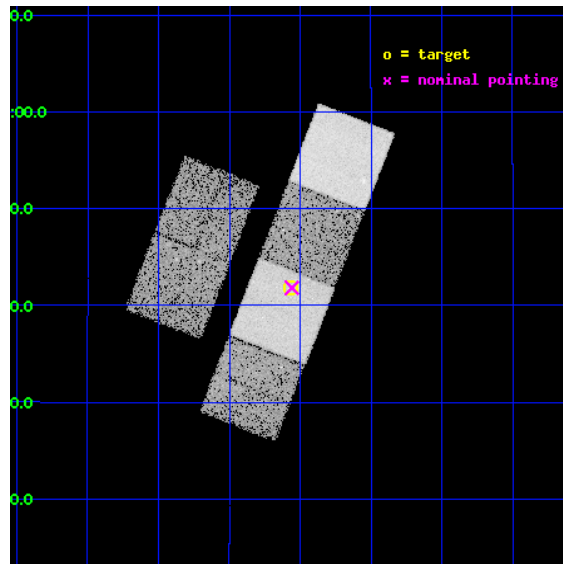
L2 Processing Date : Mar 28 2012

Contents

1	Front	2
2	OBI	3
2.1	OBI	3
2.1.1	Images	3
2.1.2	Bias	3
2.1.3	Parameters	4
2.1.4	Events	4
2.2	Compared Parameters	5
2.3	Aspect	6
2.4	Star Slots	9
2.4.1	Slot 3	9
2.4.2	Slot 5	10
2.4.3	Slot 6	11
2.4.4	Slot 7	12
2.5	FID Slots	13
2.5.1	Slot 0	13
2.5.2	Slot 1	14
2.5.3	Slot 2	15
A	Summary	16
A.1	Status	16
A.2	Comments	16

1 Front

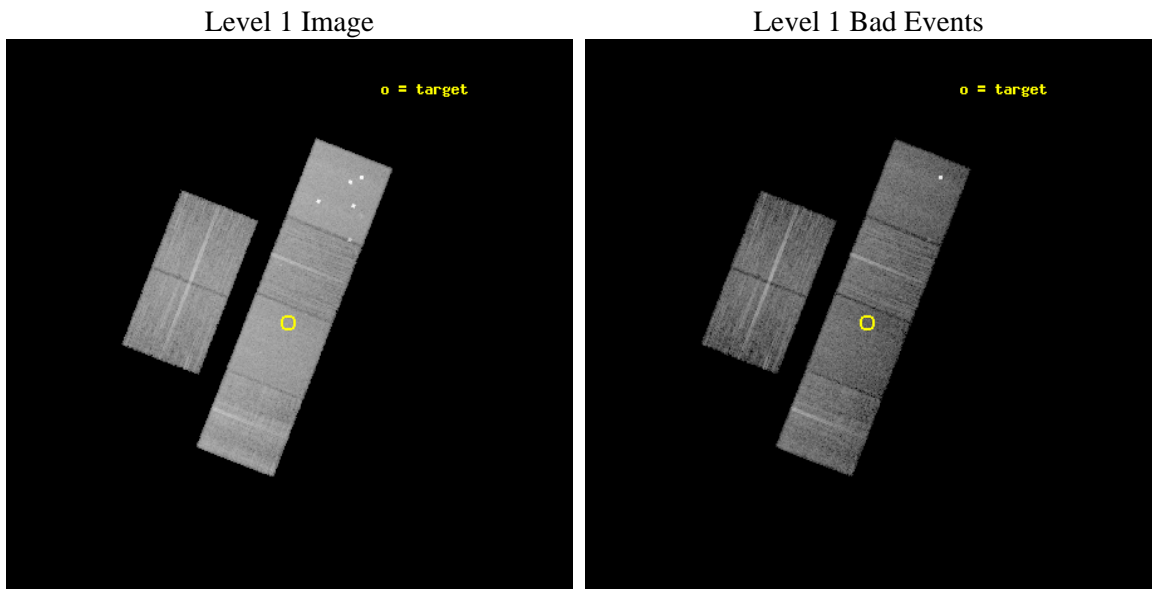
seq_num	901019	Sequence number
obs_id	14053	Observation id
title	The demographics of dark gamma-ray bursts	Proposal title
observer	Dr Andrew Levan	Principal investigator
object	GRB120320A	Source name
dtcycle	0	
cycle	P	events from which exps? Prim/Second/Both
ra_targ	212.517583	Observer's specified target RA [deg]
dec_targ	8.696444	Observer's specified target Dec [deg]
ra_nom	212.51458193369	Nominal RA [deg]
dec_nom	8.697011305108	Nominal Dec [deg]
roll_nom	111.37311688263	Nominal Roll [deg]
revision	2	Processing version of data
ontime	15266.052824914	Sum of GTIs [s]
livetime	15072.744871932	Livetime [s]
ontime2	15266.093864918	Sum of GTIs [s]
ontime3	15262.688664675	Sum of GTIs [s]
ontime5	15266.011784911	Sum of GTIs [s]
ontime6	15265.970744908	Sum of GTIs [s]
ontime7	15266.052824914	Sum of GTIs [s]
ontime8	15265.888664901	Sum of GTIs [s]
l2events	151794	Number of level 2 events



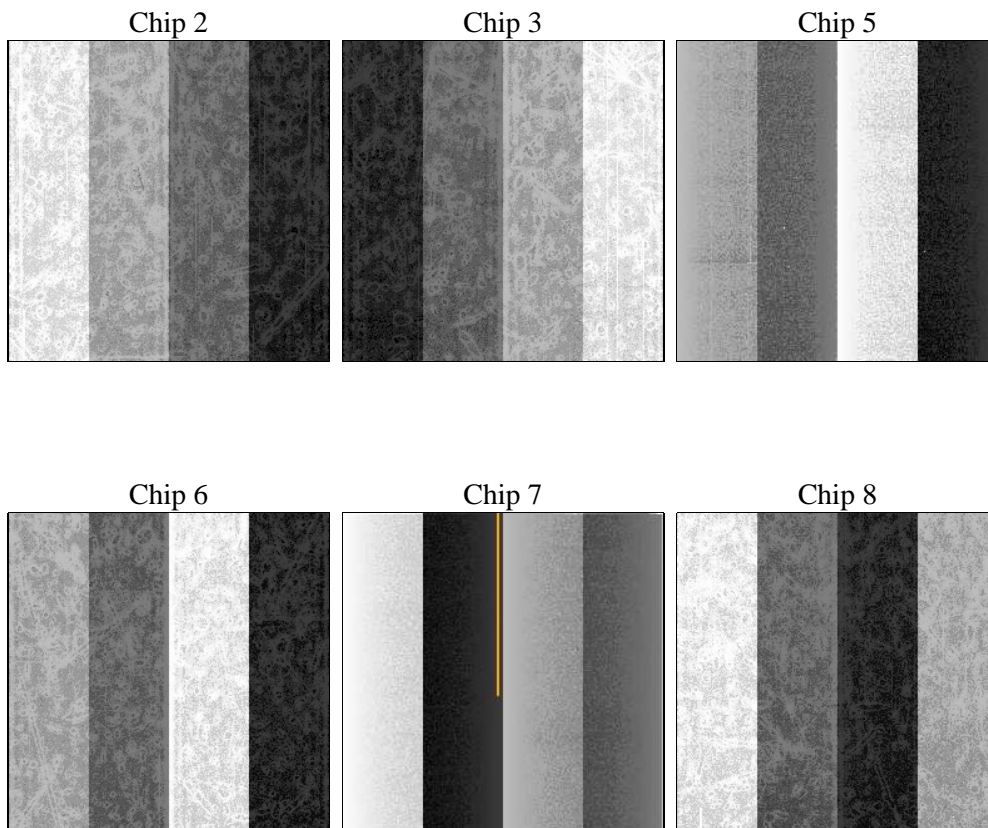
2 OBI

2.1 OBI

2.1.1 Images



2.1.2 Bias



2.1.3 Parameters

obi_num	0	Obi number	sched_exp_time	15304.030000	[s] Scheduled observation exposure time
ascdsver	8.4.3	Processing system revision	ontime	15266.052824914	Sum of GTIs [s]
caldbver	4.4.8	 	ontime2	15266.093864918	Sum of GTIs [s]
date	2012-03-28T14:20:07	Date and time of file creation	ontime3	15262.688664675	Sum of GTIs [s]
revision	2	Processing version of data	ontime5	15266.011784911	Sum of GTIs [s]
			ontime6	15265.970744908	Sum of GTIs [s]
			ontime7	15266.052824914	Sum of GTIs [s]
			ontime8	15265.888664901	Sum of GTIs [s]
			l1events	655035	Number of level 1 events

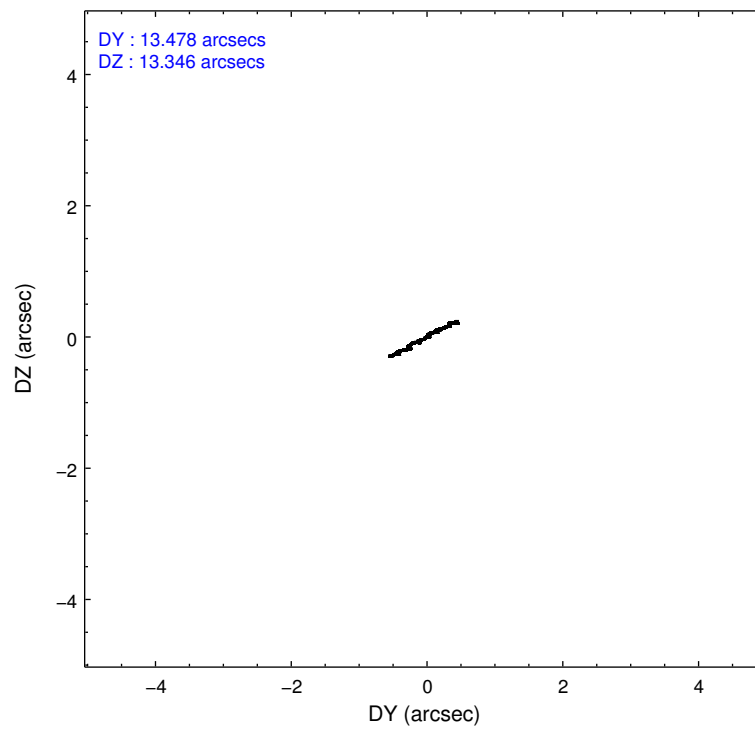
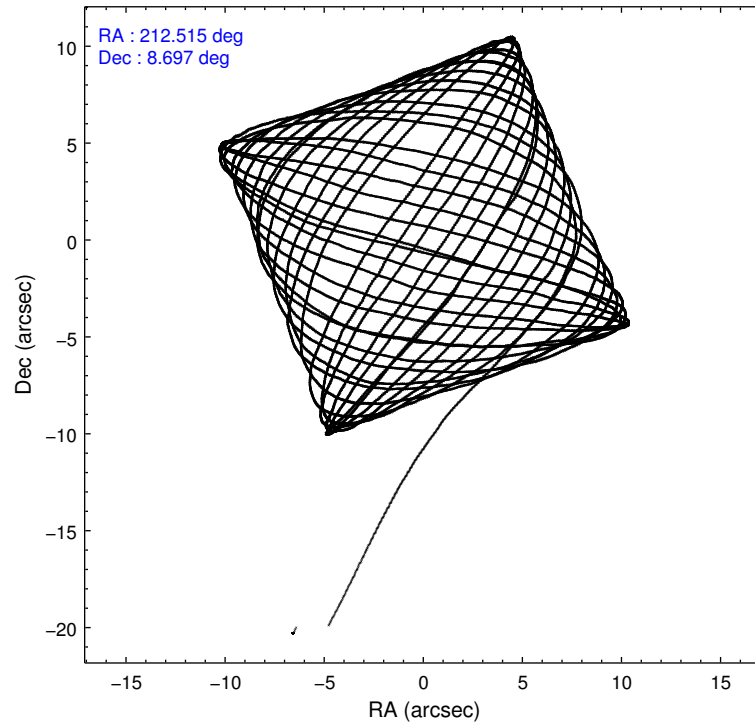
2.1.4 Events

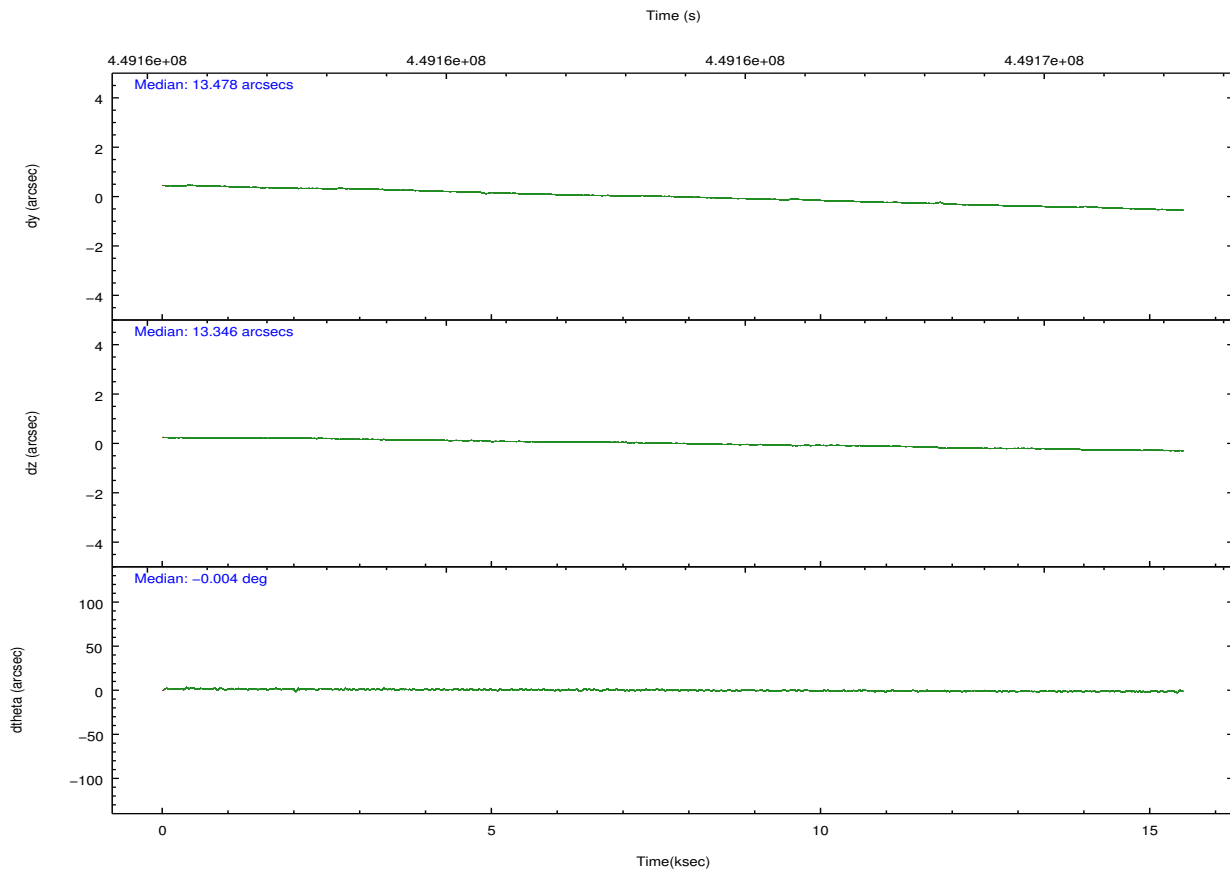
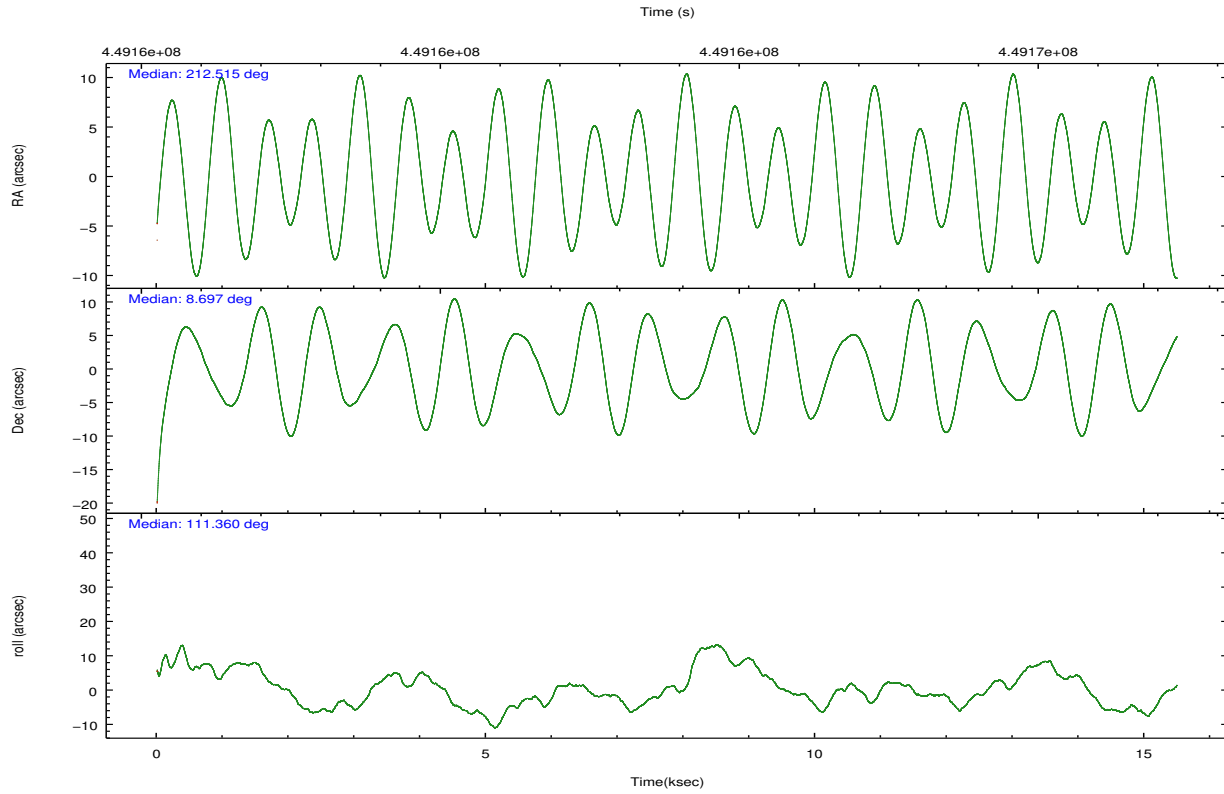
	ccd 2	ccd 3	ccd 5	ccd 6	ccd 7	ccd 8		ccd 2	ccd 3	ccd 5	ccd 6	ccd 7	ccd 8
level 1 events	89397	84142	158619	91841	116875	114161	grade 0 events	3624	3548	18605	3955	4821	8525
rejected events	79675	74666	76451	80984	65412	85116		4%	4%	11%	4%	4%	7%
rejected %	89%	88%	48%	88%	55%	74%	grade 1 events	49	53	334	50	141	73
								0%	0%	0%	0%	0%	0%
							grade 2 events	2301	1984	21770	2422	10479	6916
								2%	2%	13%	2%	8%	6%
							grade 3 events	966	1022	2412	1040	4426	3202
								1%	1%	1%	1%	3%	2%
							grade 4 events	1010	974	2248	1044	4277	2958
								1%	1%	1%	1%	3%	2%
							grade 5 events	3792	4333	10486	4290	11891	6202
								4%	5%	6%	4%	10%	5%
							grade 6 events	1826	1952	37178	2399	27486	7450
								2%	2%	23%	2%	23%	6%
							grade 7 events	75829	70276	65586	76641	53354	78835
								84%	83%	41%	83%	45%	69%

2.2 Compared Parameters

Parameter	Planned	Actual	Parameter	Planned	Actual
Instrument	ACIS	ACIS	Obspar format version number	7	7
Detector	ACIS-235678	ACIS-235678	Obspar file type	PREDICTED	ACTUAL
Grating	NONE	NONE	Obspar update status	NONE	UPDATED
Data mode	VFAINT	VFAINT	CCD I0 on	N	N
Observation mode	POINTING	POINTING	CCD I1 on	N	N
[deg] Pointing RA	212.536418	212.5145819336865	CCD I2 on	O1	Y
[deg] Pointing Dec	8.680253	8.697011305108006	CCD I3 on	O2	Y
[deg] Pointing Roll	111.213201	111.3731168826306	CCD S0 on	N	N
[mm] SIM focus pos	-0.684267	-0.6828225247311905	CCD S1 on	Y	Y
[mm] SIM defocus	0	0.001444936568705701	CCD S2 on	Y	Y
[mm] SIM translation stage pos	-190.132523	-190.1425803651734	CCD S3 on	Y	Y
[mm] SIM translation stage offset	0	0.01005778216563158	CCD S4 on	Y	Y
[s] Observation start time (MET)	449156234.184000	449155092.22458	CCD S5 on	N	N
Observation start date	2012-03-26T13:36:08	2012-03-26T13:18:12	Number of optional ACIS chips dropped	0	0
[s] Observation end time (MET)	449171538.184000	449171763.33796	On-chip summing requested	N	N
Observation end date	2012-03-26T17:51:12	2012-03-26T17:56:03	Subarray requested	NONE	NONE
Read mode	TIMED	TIMED	Alternating exposures requested	N	N
			[s] Primary exposure time	0.000000	3.2

2.3 Aspect



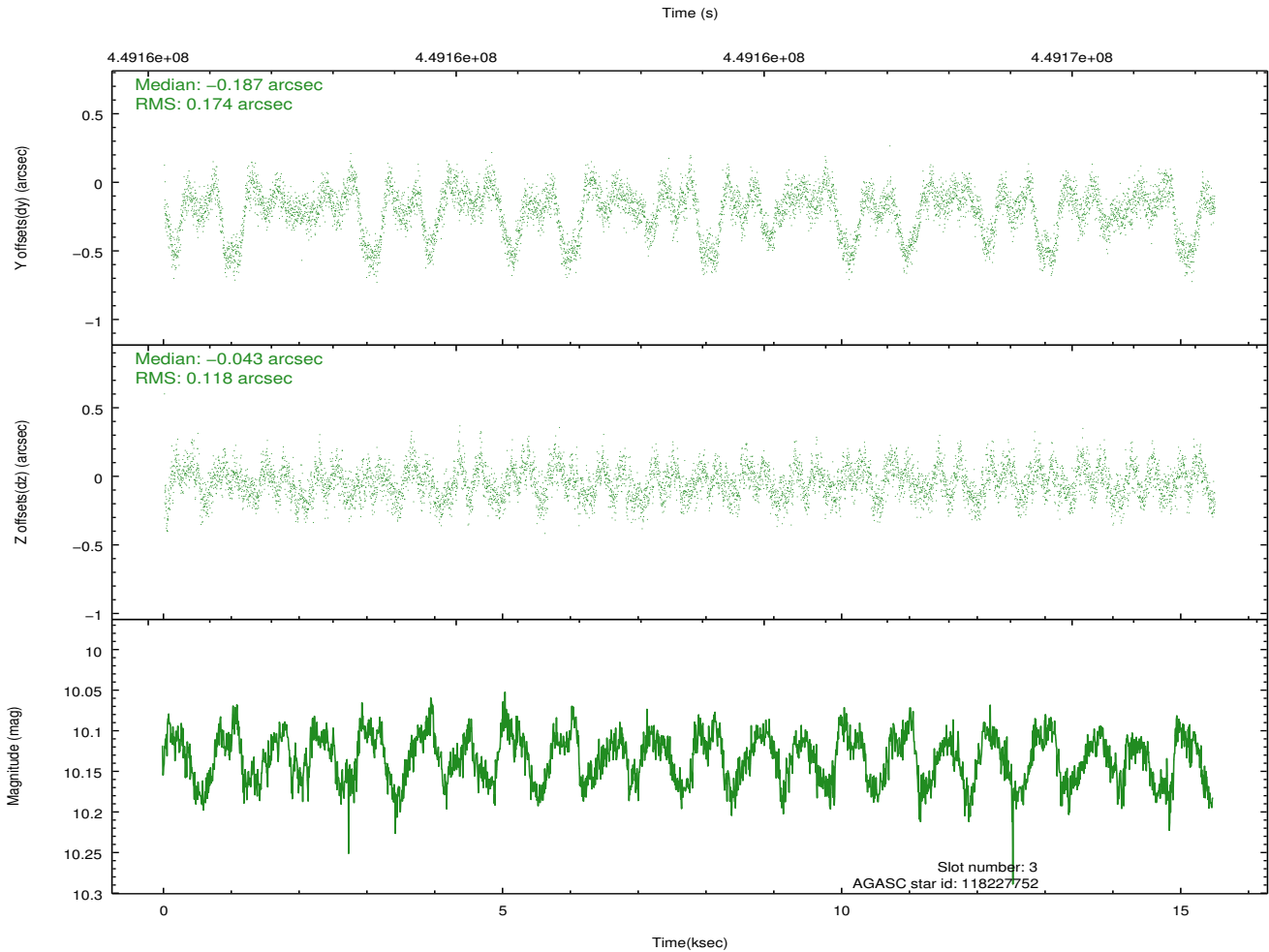
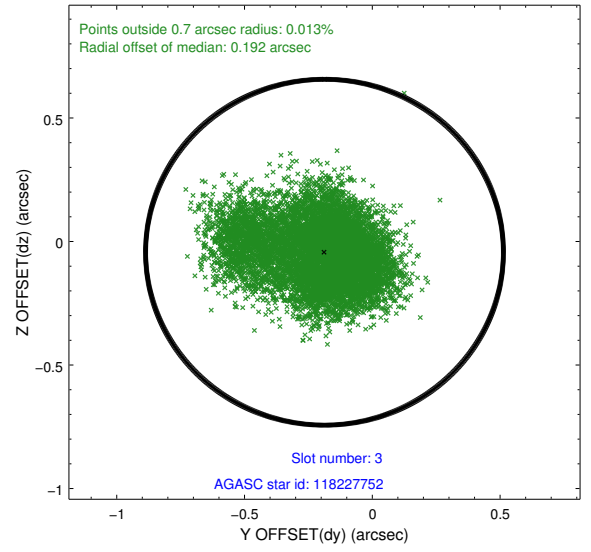
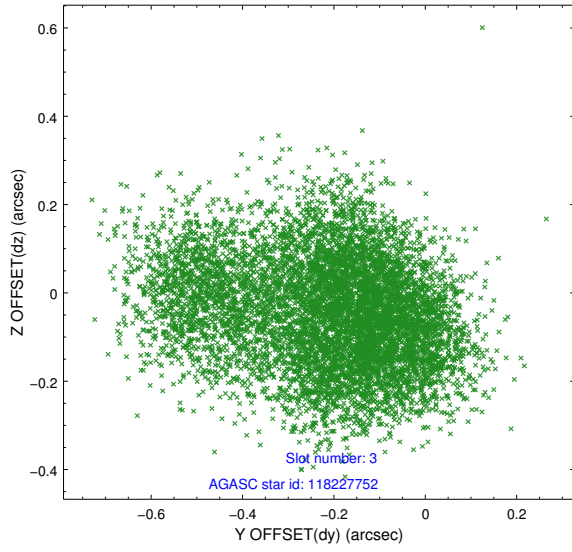


Slot Statistics

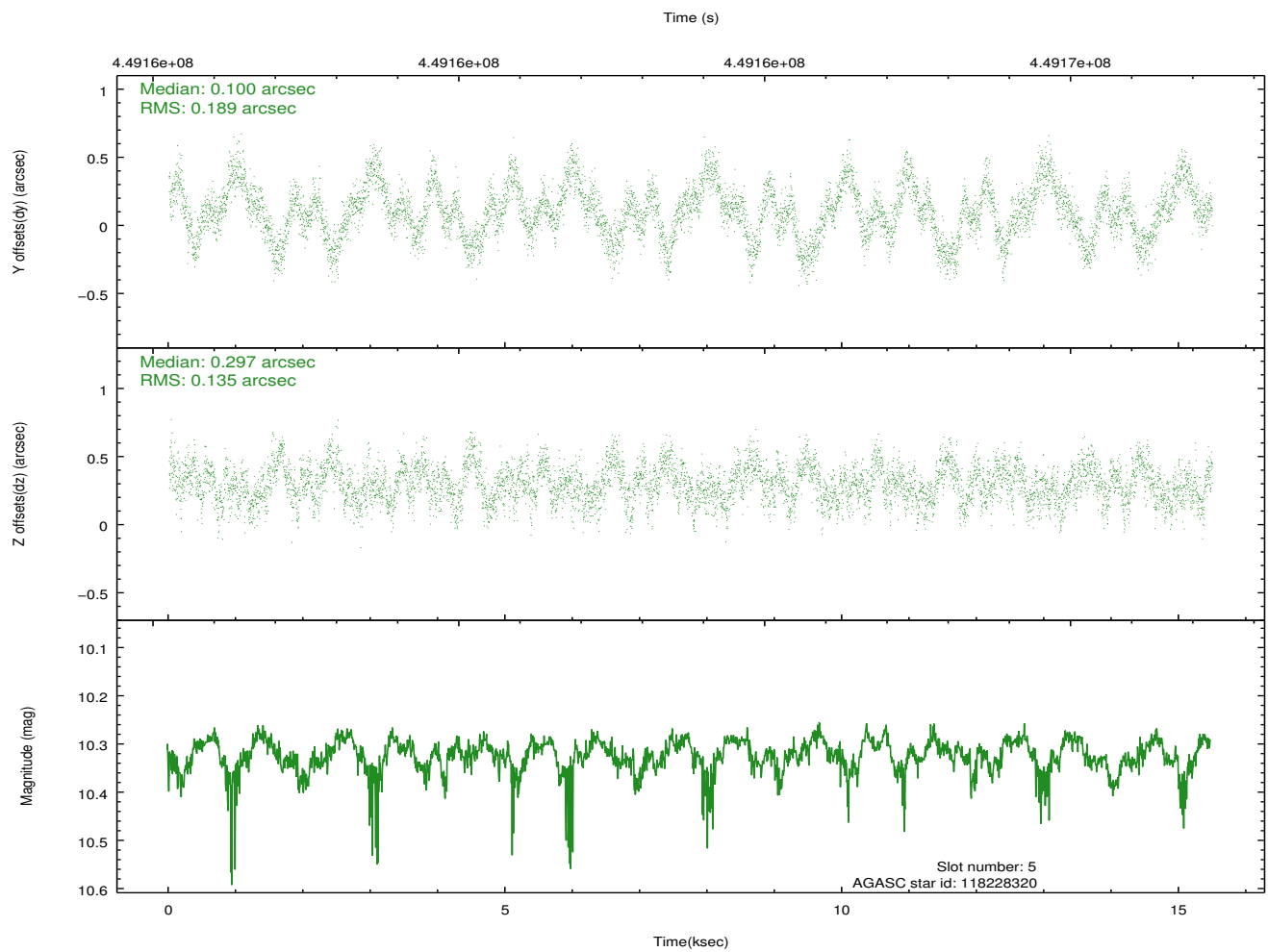
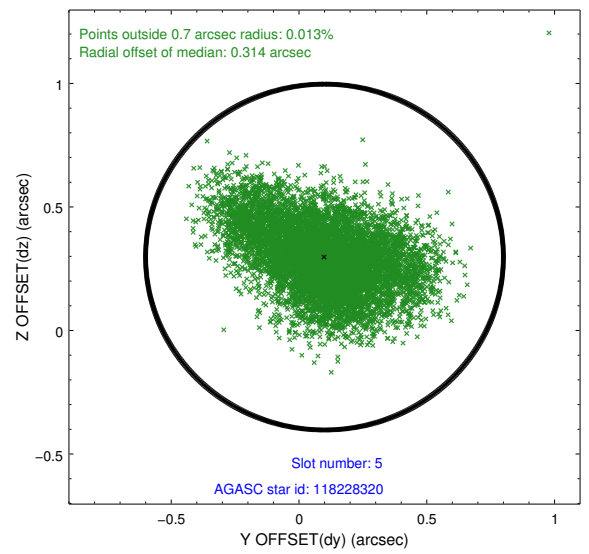
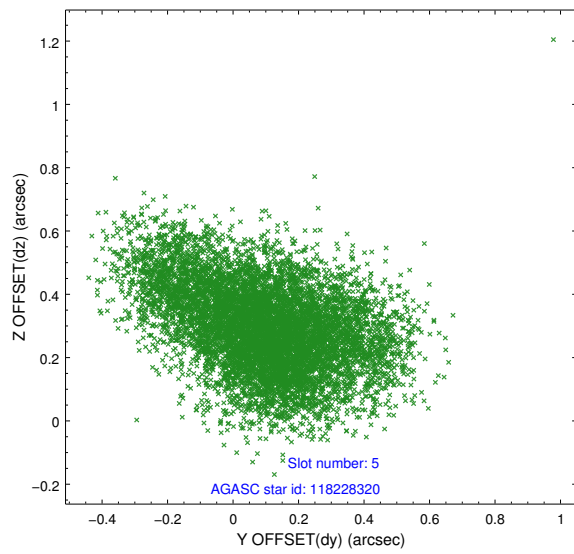
slot	status	id	mag	n_pts	med_dy	med_dz	dr1	dr2	ra	dec	mean_y	mean_z
0	FID	ACIS-S-2	7.03	3779	0.017	-0.072	0.010	0.015	0.000000	0.000000	-766.38	-1734.68
1	FID	ACIS-S-5	7.16	3779	-0.131	0.037	0.012	0.017	0.000000	0.000000	-1819.75	167.11
2	FID	ACIS-S-6	7.25	3779	0.089	0.042	0.011	0.021	0.000000	0.000000	395.02	811.33
3	GUIDE	118227752	10.13	7551	-0.187	-0.043	0.221	0.374	212.501954	8.325998	-1144.37	576.24
4	OMITTED		0.00	0	0.000	0.000	0.000	0.000	0.000000	0.000000	0.00	0.00
5	GUIDE	118228320	10.32	7538	0.100	0.297	0.247	0.407	212.774758	8.447946	-1085.98	-487.94
6	GUIDE	118236624	8.76	7554	0.048	-0.145	0.123	0.205	212.449232	8.117338	-1776.59	1022.98
7	GUIDE	118233352	10.28	7530	0.064	-0.110	0.201	0.351	212.950720	9.461816	2091.46	-2385.62

2.4 Star Slots

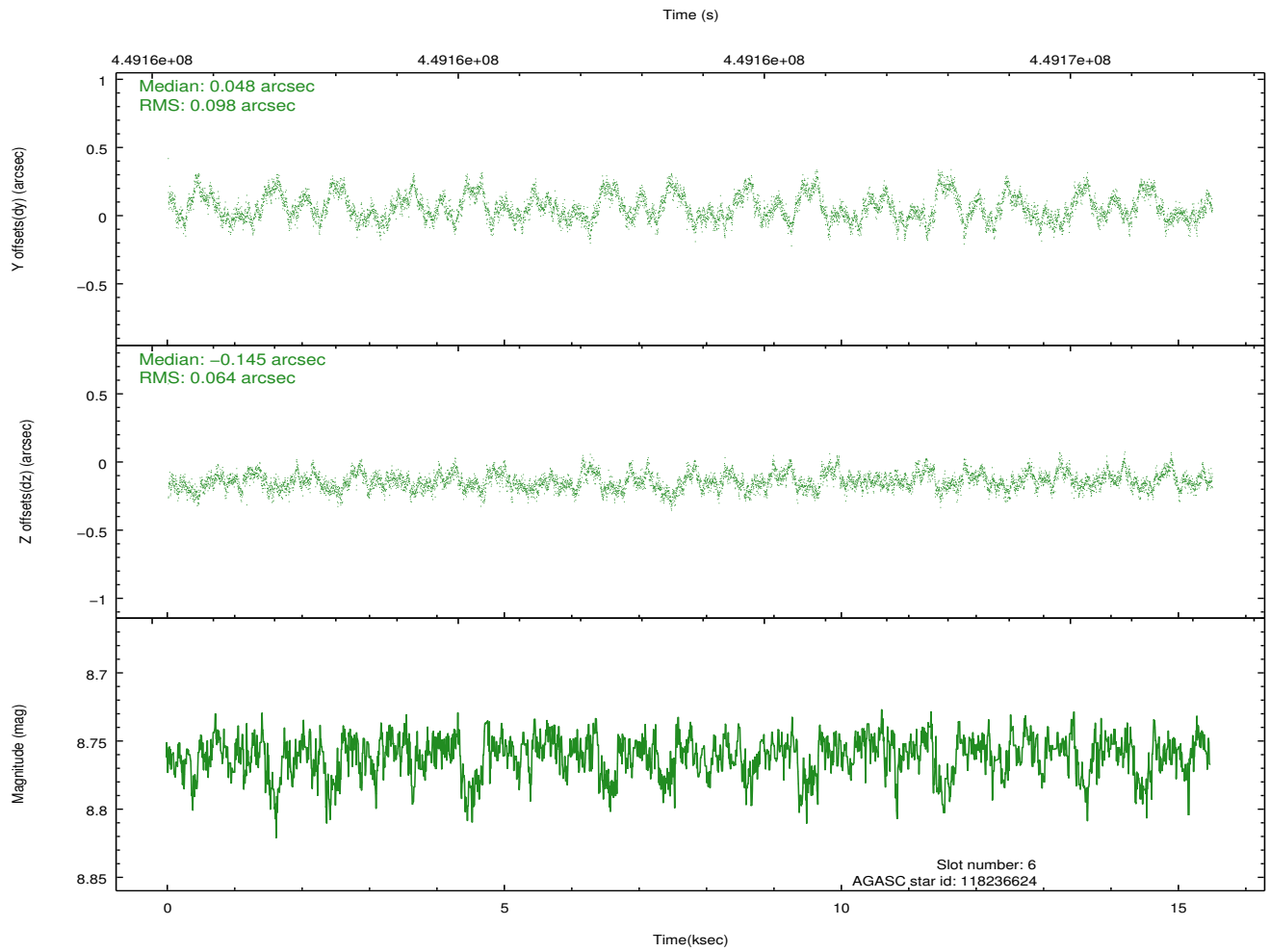
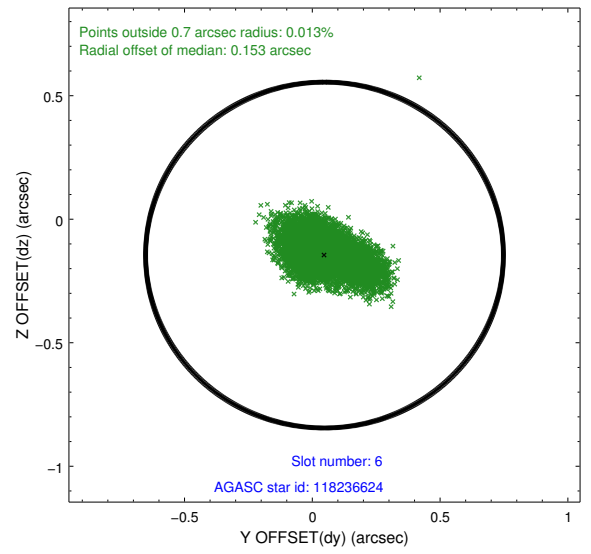
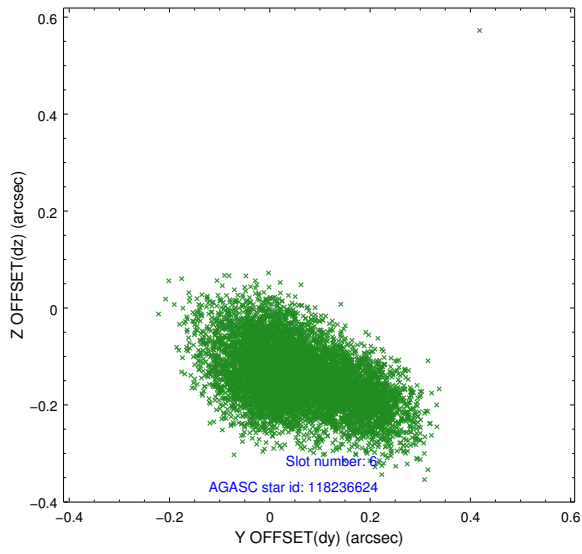
2.4.1 Slot 3



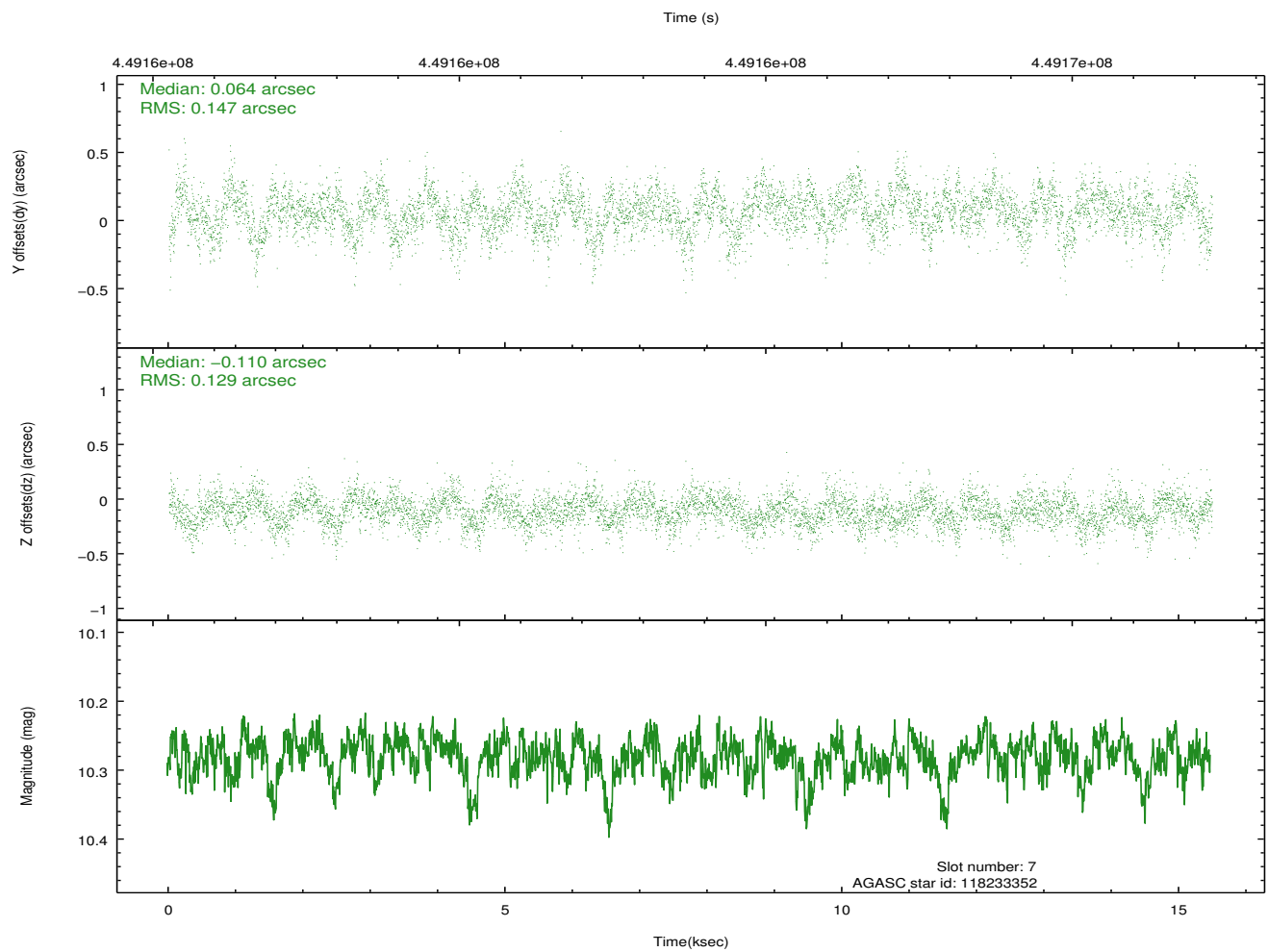
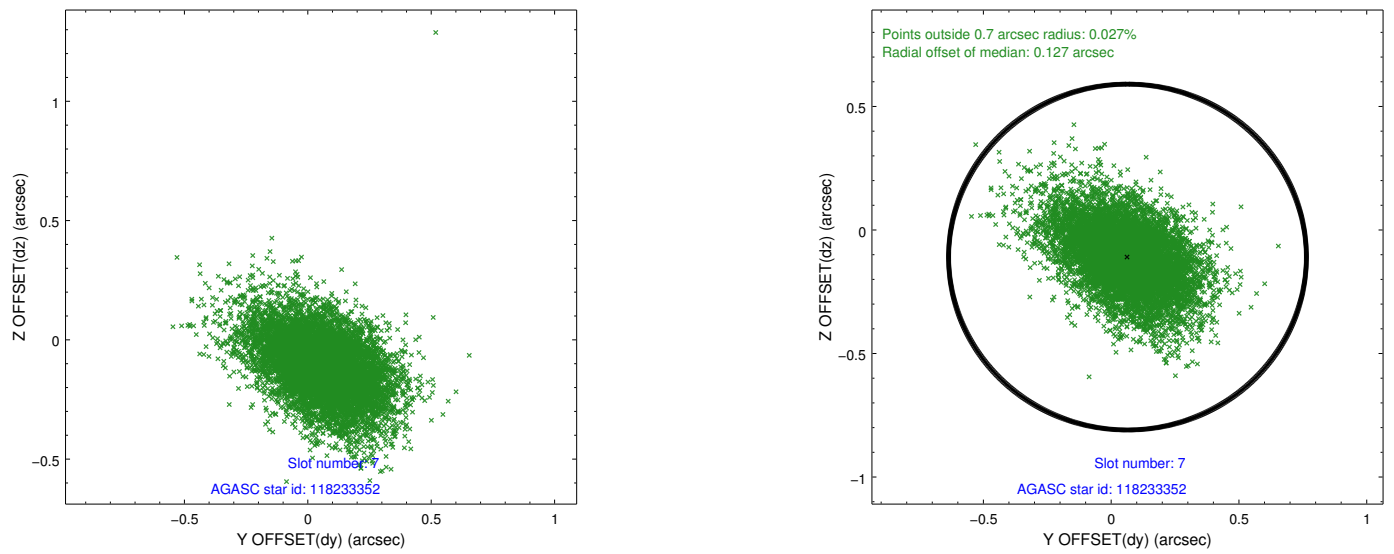
2.4.2 Slot 5



2.4.3 Slot 6

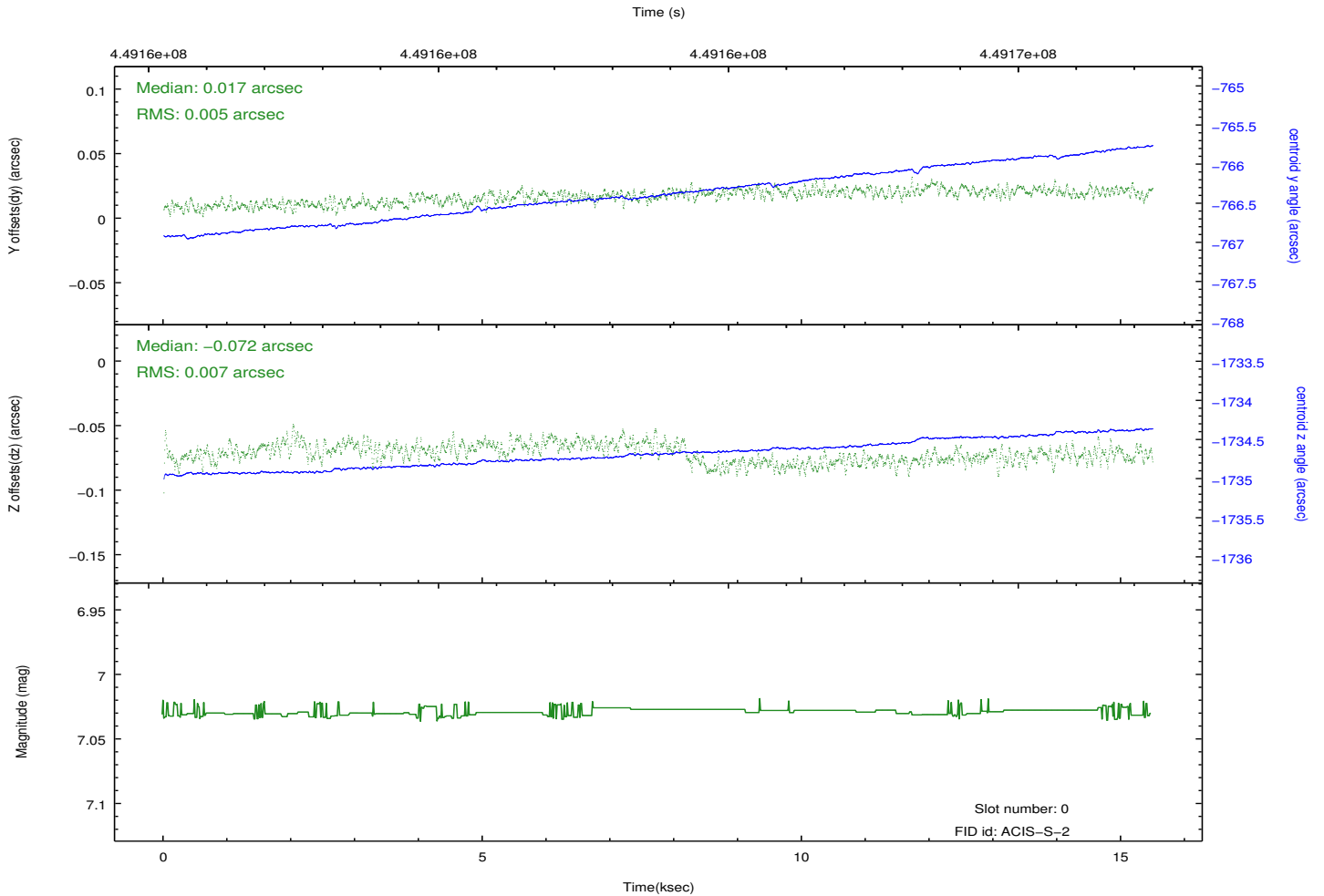
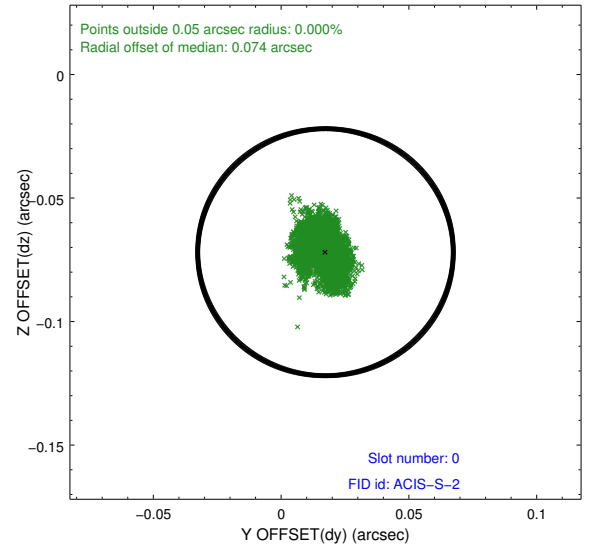
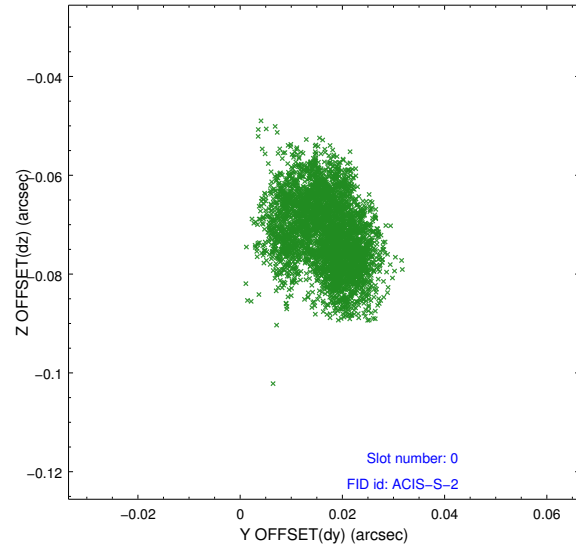


2.4.4 Slot 7

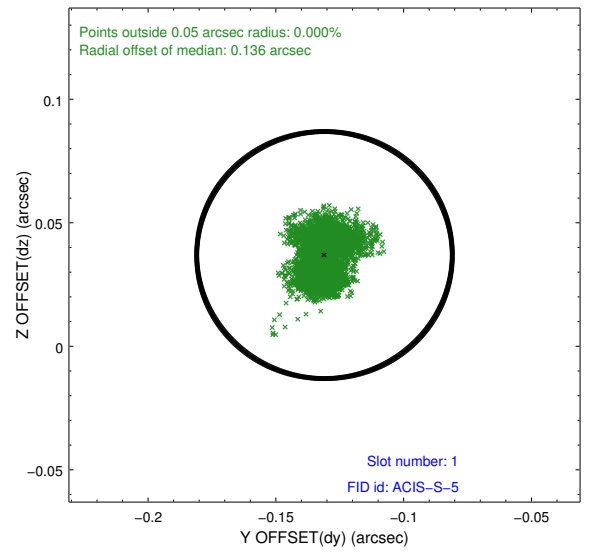
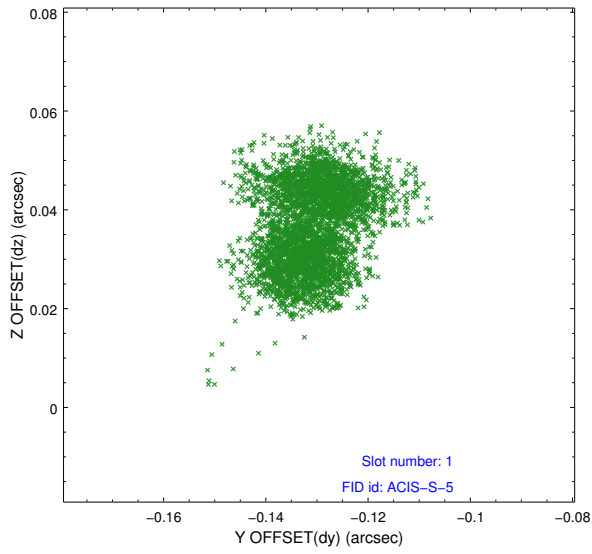


2.5 FID Slots

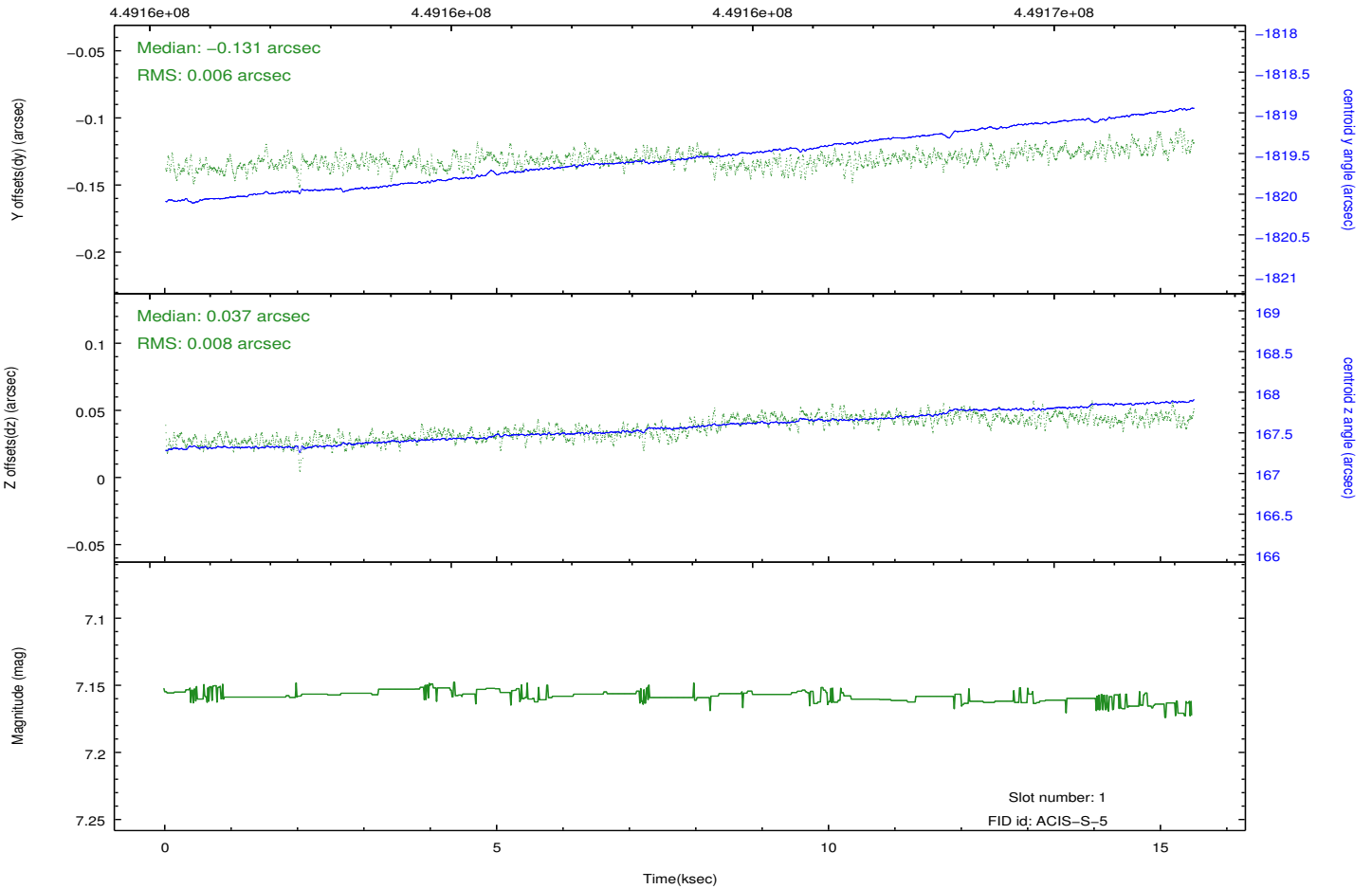
2.5.1 Slot 0



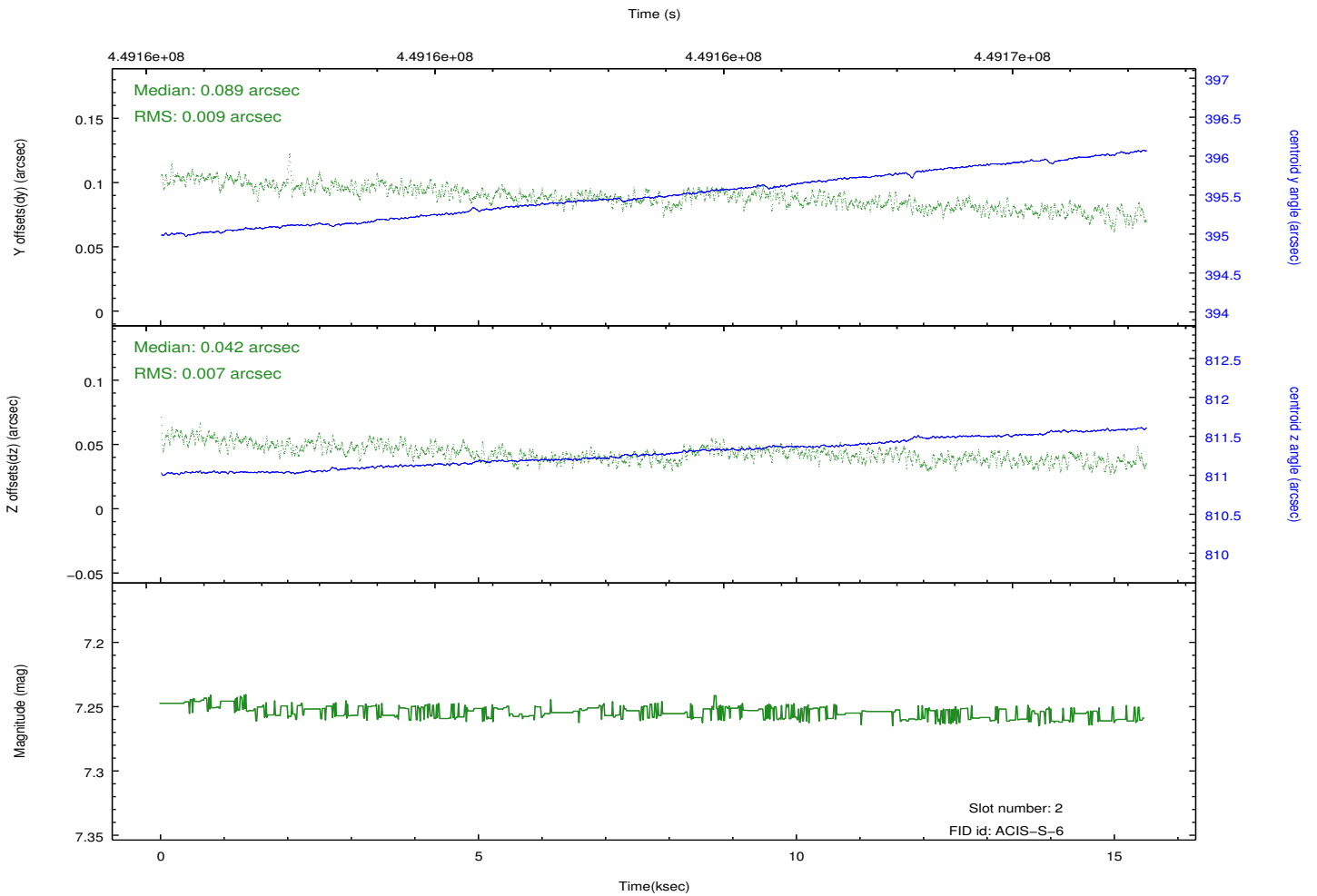
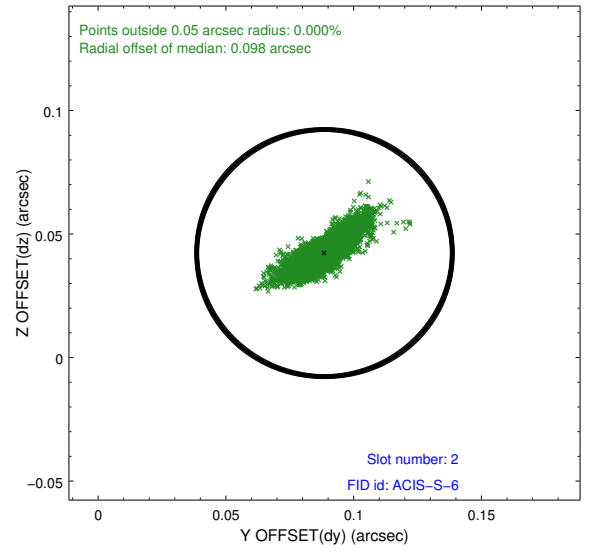
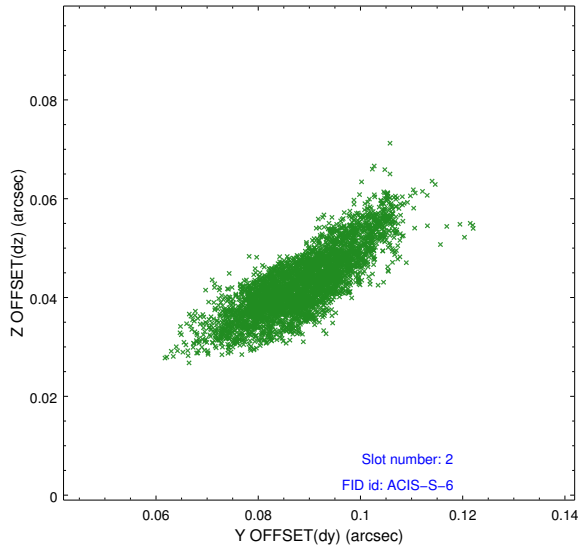
2.5.2 Slot 1



Time (s)



2.5.3 Slot 2



A Summary

A.1 Status

V&V Scientist	Joy Nichols
V&V Date (YYYY-MM-DD)	2012.03.29
V&V Edition	1
V&V Disposition and Status	OK
V&V Charge Time	15.266052824914

A.2 Comments

The guide star in slot 4 was removed from the aspect solution due to poor data quality. The aspect solution is improved by the removal of this guide star from the solution.