

V&V Reference Report

L2 ASCDS Version : 8.4.5

Observation 14353 - L2 Version 1
Chandra X-Ray Center

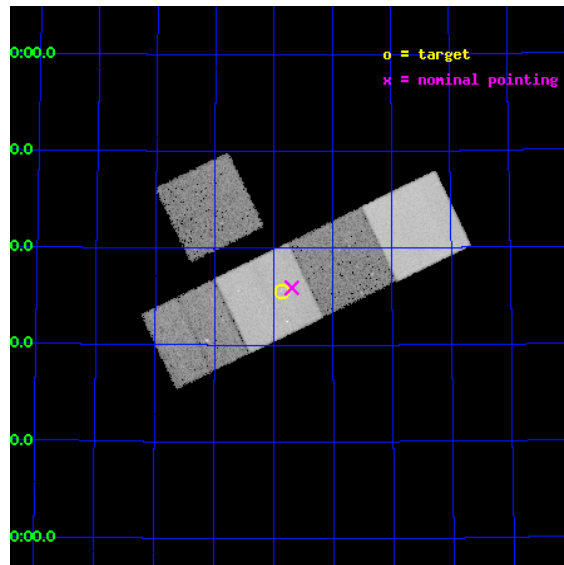
L2 Processing Date : Jul 30 2012

Contents

1	Front	2
2	OBI	3
2.1	OBI	3
2.1.1	Images	3
2.1.2	Bias	3
2.1.3	Parameters	4
2.1.4	Events	4
2.2	Compared Parameters	5
2.3	Aspect	6
2.4	Star Slots	9
2.4.1	Slot 3	9
2.4.2	Slot 4	10
2.4.3	Slot 5	11
2.4.4	Slot 6	12
2.4.5	Slot 7	13
2.5	FID Slots	14
2.5.1	Slot 0	14
2.5.2	Slot 1	15
2.5.3	Slot 2	16
A	Summary	17
A.1	Status	17
A.2	Comments	17

1 Front

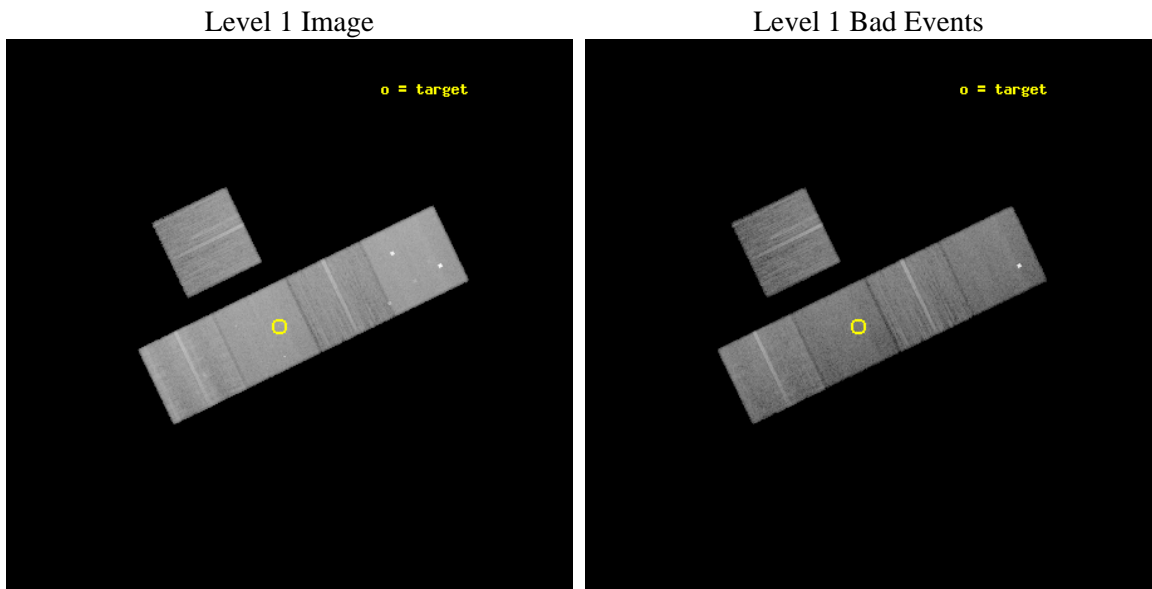
seq_num	501603	Sequence number
obs_id	14353	Observation id
title	Guitar with a bow: a jet-like X-ray-emitting feature associated a fast-moving pulsar	Proposal title
observer	Prof. Q. Daniel Wang	Principal investigator
object	B2224+65	Source name
dtcycle	0	
cycle	P	events from which exps? Prim/Second/Both
ra_targ	336.46625	Observer's specified target RA [deg]
dec_targ	65.593083	Observer's specified target Dec [deg]
ra_nom	336.423752761	Nominal RA [deg]
dec_nom	65.598810577195	Nominal Dec [deg]
roll_nom	154.19533230355	Nominal Roll [deg]
revision	1	Processing version of data
ontime	35067.200269699	Sum of GTIs [s]
livetime	34609.021482078	Livetime [s]
ontime3	35064.05929929	Sum of GTIs [s]
ontime5	35067.200269699	Sum of GTIs [s]
ontime6	35067.200269699	Sum of GTIs [s]
ontime7	35067.200269699	Sum of GTIs [s]
ontime8	35067.200269699	Sum of GTIs [s]
l2events	304144	Number of level 2 events



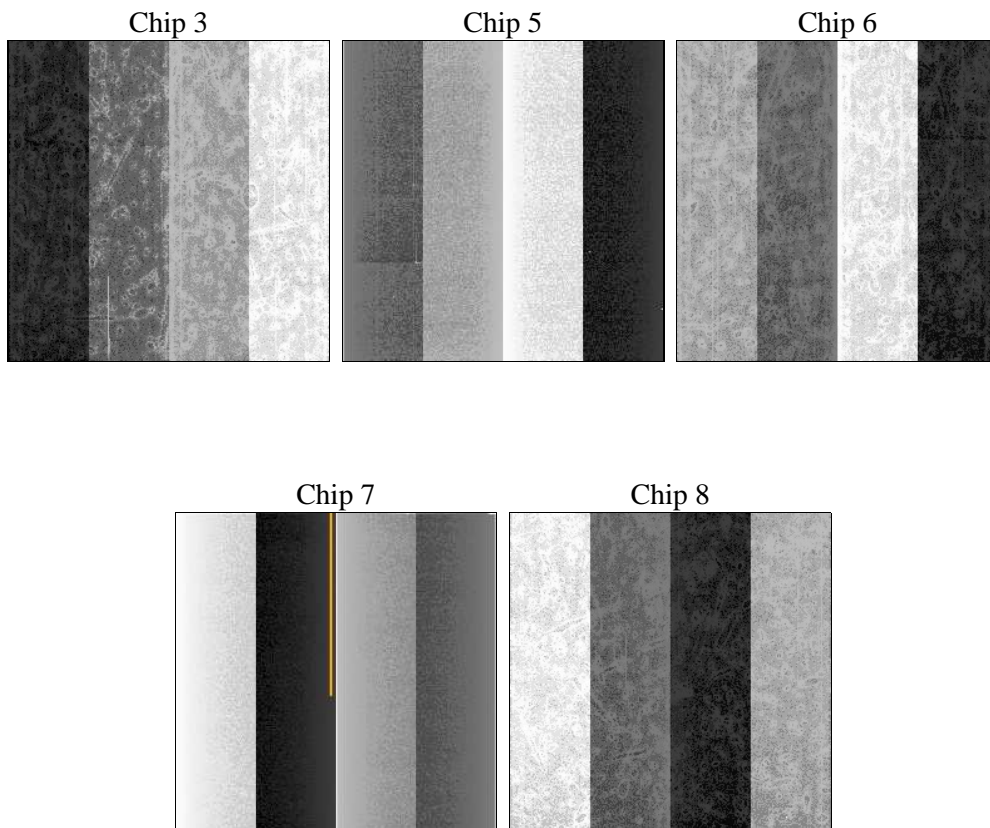
2 OBI

2.1 OBI

2.1.1 Images



2.1.2 Bias



2.1.3 Parameters

obi_num	0	Obi number	sched_exp_time	35000.000000	[s] Scheduled observation exposure time
ascdsver	8.4.5	Processing system revision	ontime	35067.200269699	Sum of GTIs [s]
caldsver	4.5.1	 	ontime3	35064.05929929	Sum of GTIs [s]
date	2012-07-30T15:31:19	Date and time of file creation	ontime5	35067.200269699	Sum of GTIs [s]
revision	1	Processing version of data	ontime6	35067.200269699	Sum of GTIs [s]
			ontime7	35067.200269699	Sum of GTIs [s]
			ontime8	35067.200269699	Sum of GTIs [s]
			l1events	1159597	Number of level 1 events

2.1.4 Events

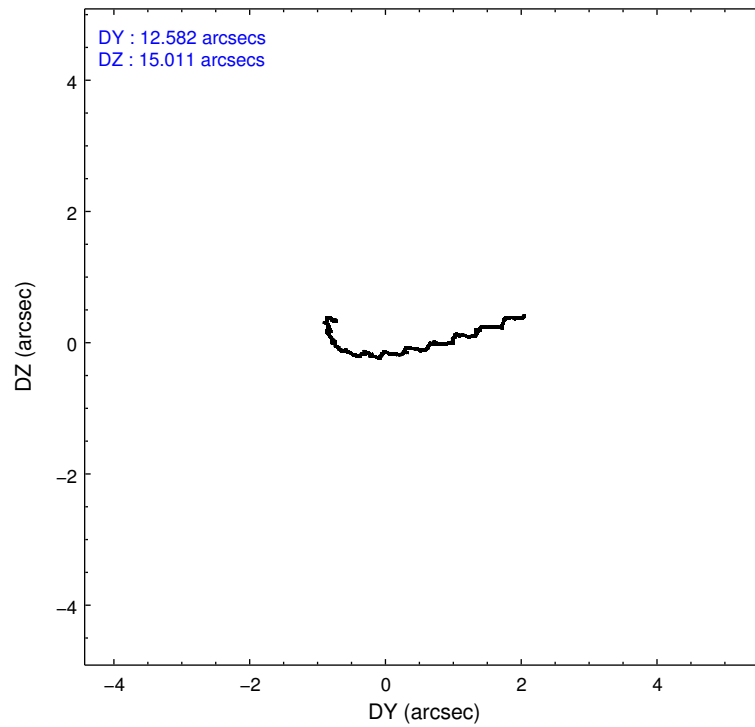
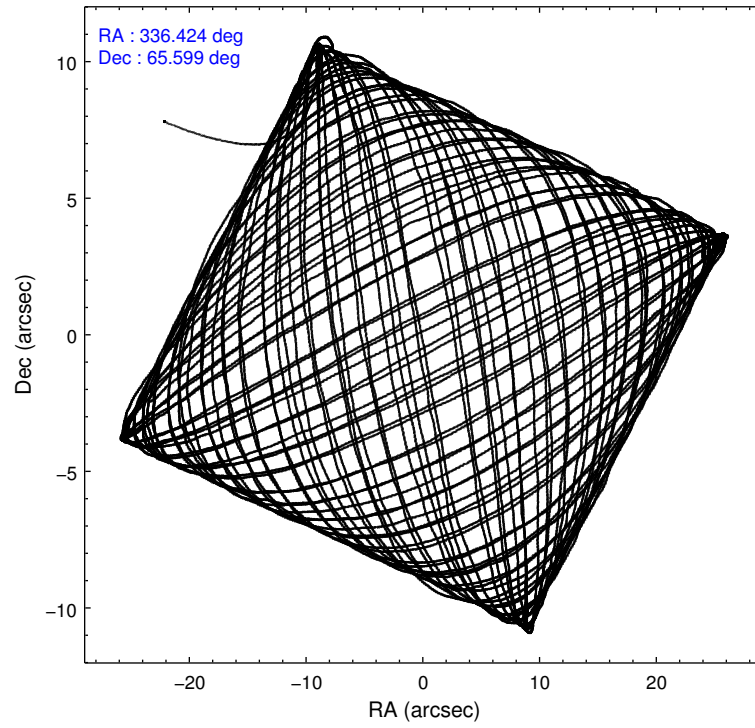
	ccd 3	ccd 5	ccd 6	ccd 7	ccd 8
level 1 events	173924	311988	185180	244202	244303
rejected events	153872	160601	162703	134984	176138
rejected %	88%	51%	87%	55%	72%

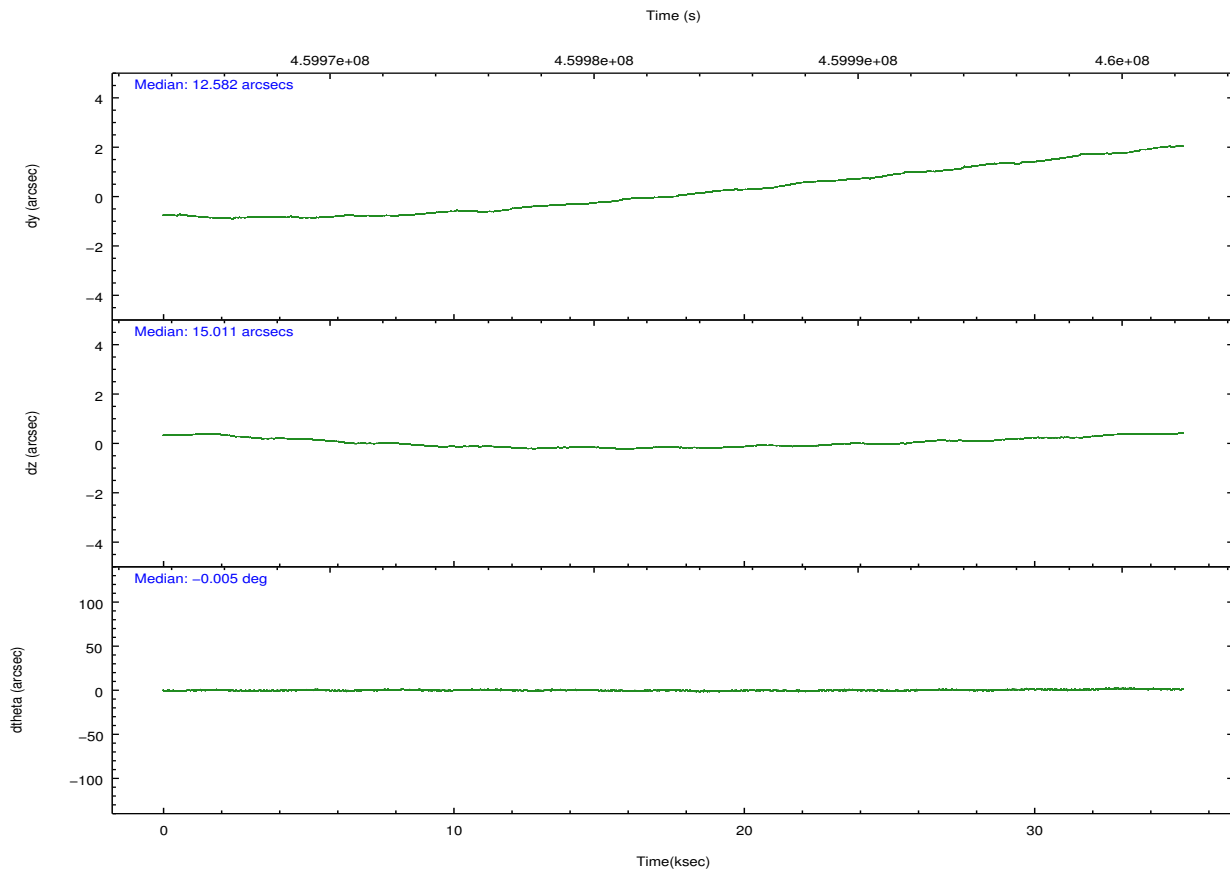
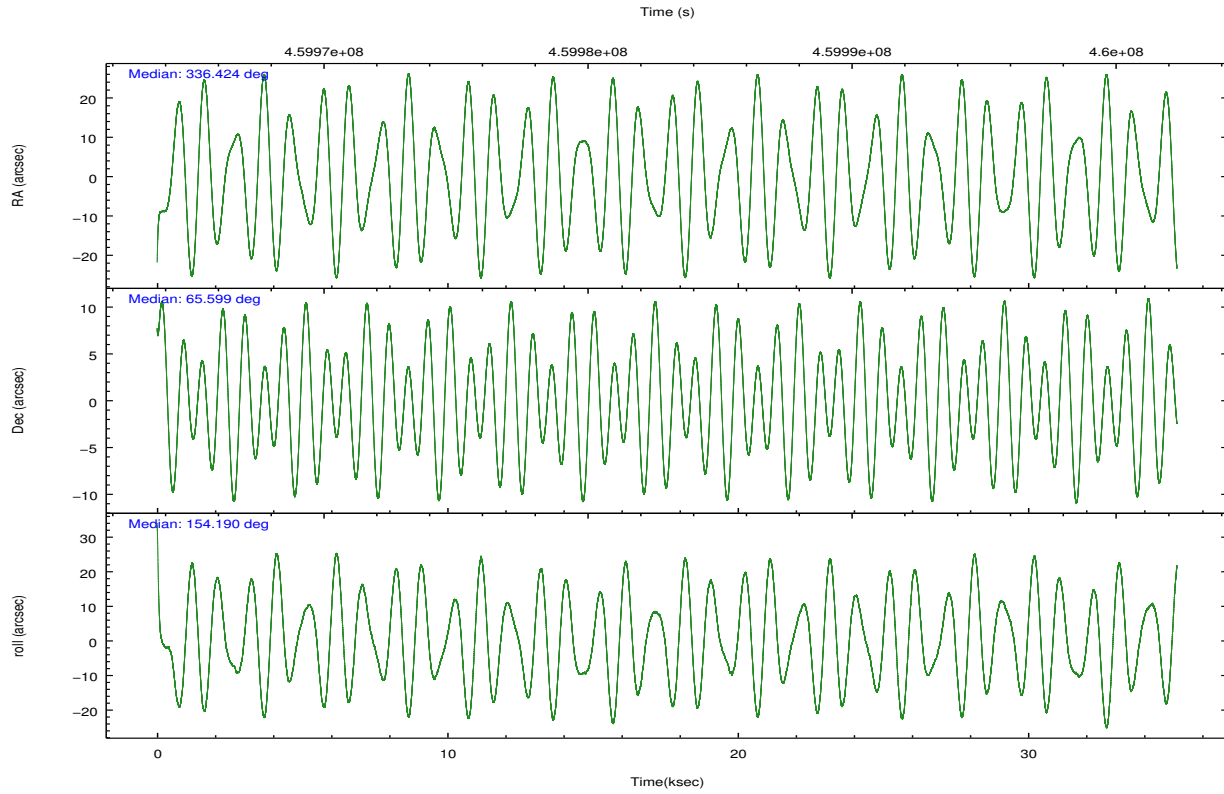
	ccd 3	ccd 5	ccd 6	ccd 7	ccd 8
grade 0 events	7044	18982	7808	10135	20712
	4%	6%	4%	4%	8%
grade 1 events	91	533	94	310	176
	0%	0%	0%	0%	0%
grade 2 events	4470	44434	5105	22516	15140
	2%	14%	2%	9%	6%
grade 3 events	2104	6058	2222	9585	7393
	1%	1%	1%	3%	3%
grade 4 events	2208	4947	2231	9593	6982
	1%	1%	1%	3%	2%
grade 5 events	9150	26666	9072	25152	13306
	5%	8%	4%	10%	5%
grade 6 events	4228	76984	5115	57408	17944
	2%	24%	2%	23%	7%
grade 7 events	144629	133384	153533	109503	162650
	83%	42%	82%	44%	66%

2.2 Compared Parameters

Parameter	Planned	Actual	Parameter	Planned	Actual
Instrument	ACIS	ACIS	Obspar format version number	7	7
Detector	ACIS-35678	ACIS-35678	Obspar file type	PREDICTED	ACTUAL
Grating	NONE	NONE	Obspar update status	NONE	UPDATED
Data mode	VFAINT	VFAINT	CCD I0 on	N	N
Observation mode	POINTING	POINTING	CCD I1 on	N	N
[deg] Pointing RA	336.489699	336.4237527610029	CCD I2 on	N	N
[deg] Pointing Dec	65.601147	65.59881057719491	CCD I3 on	O1	Y
[deg] Pointing Roll	153.978638	154.1953323035509	CCD S0 on	N	N
[mm] SIM focus pos	-0.684267	-0.6828225247311905	CCD S1 on	O2	Y
[mm] SIM defocus	0	0.001444936568705701	CCD S2 on	Y	Y
[mm] SIM translation stage pos	-190.132523	-190.1400660498719	CCD S3 on	Y	Y
[mm] SIM translation stage offset	0	0.00754346686406393	CCD S4 on	Y	Y
[s] Observation start time (MET)	459965546.184000	459964065.78347	CCD S5 on	N	N
Observation start date	2012-07-29T16:11:19	2012-07-29T15:47:45	Number of optional ACIS chips dropped	0	0
[s] Observation end time (MET)	460000546.184000	460001744.78548	On-chip summing requested	N	N
Observation end date	2012-07-30T01:54:39	2012-07-30T02:15:44	Subarray requested	NONE	NONE
Read mode	TIMED	TIMED	Alternating exposures requested	N	N
			[s] Primary exposure time	0.000000	3.1

2.3 Aspect



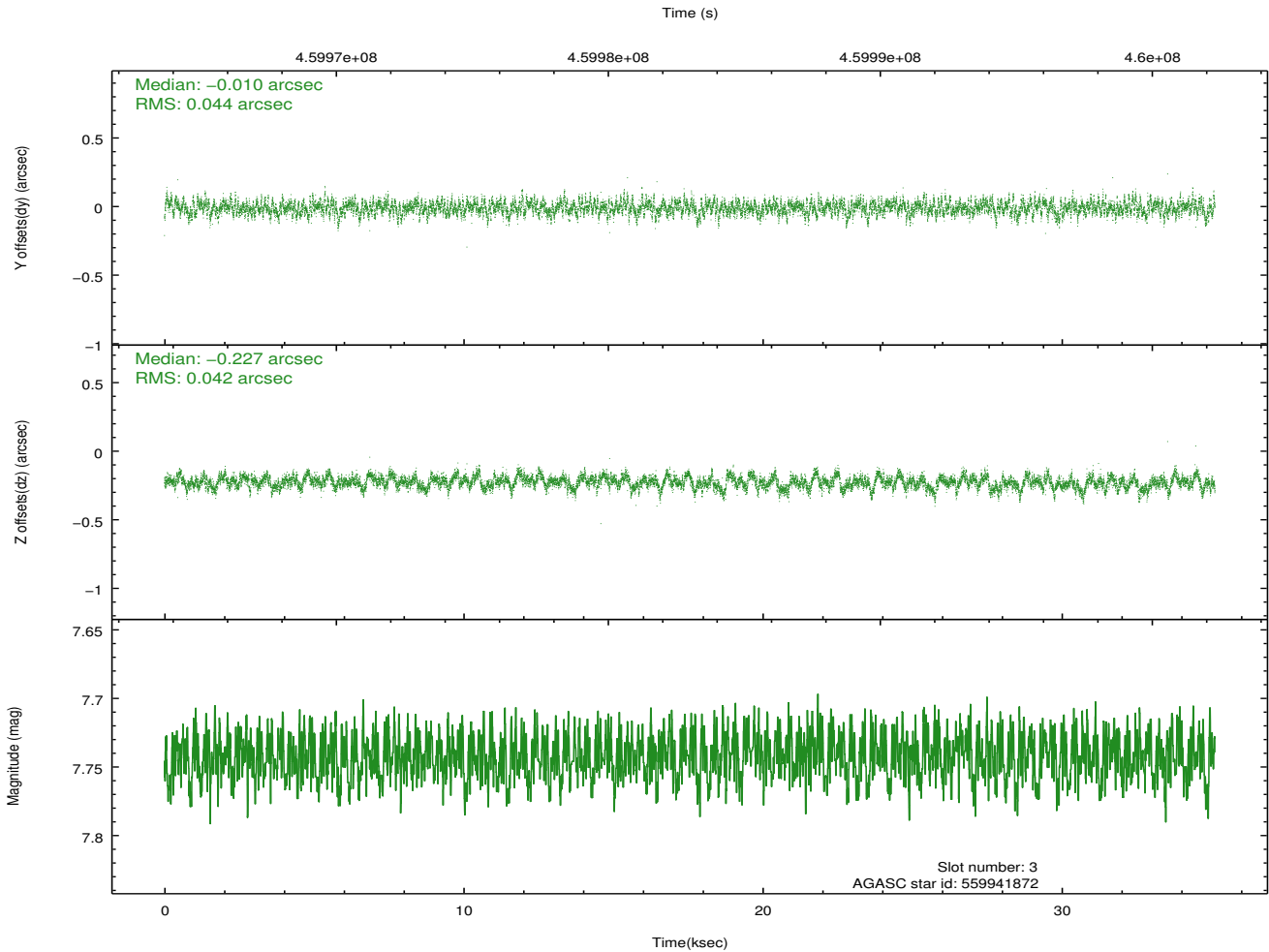
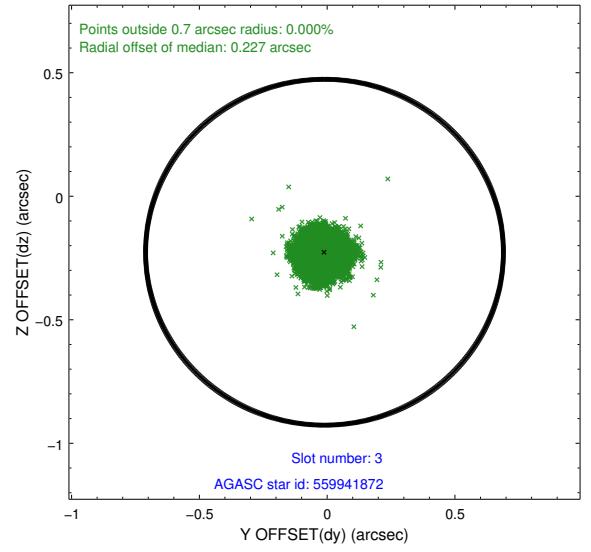
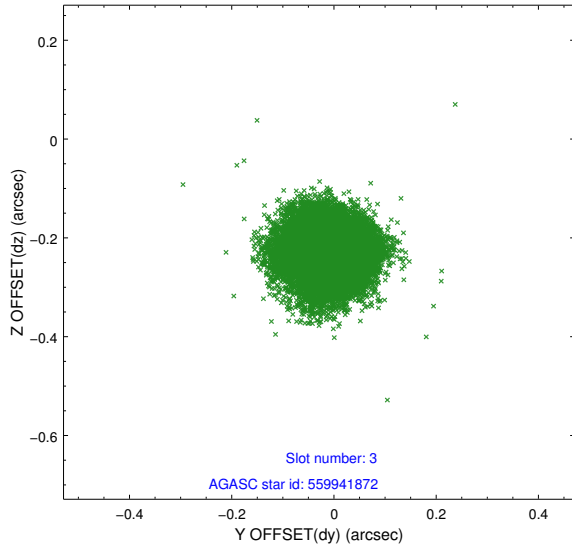


Slot Statistics

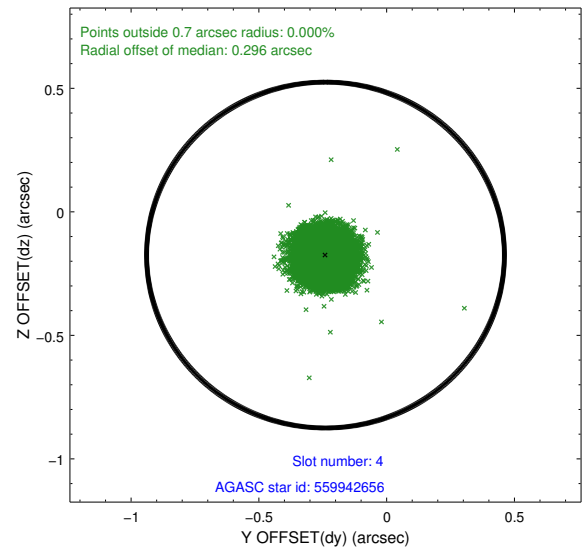
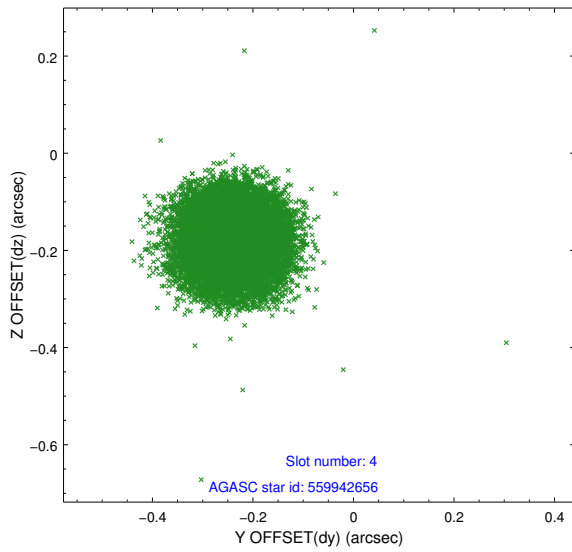
slot	status	id	mag	n_pts	med_dy	med_dz	dr1	dr2	ra	dec	mean_y	mean_z
0	FID	ACIS-S-2	6.92	8566	-0.068	-0.011	0.014	0.040	0.000000	0.000000	-765.76	-1736.46
1	FID	ACIS-S-4	7.00	8566	0.189	0.036	0.034	0.063	0.000000	0.000000	2147.75	172.07
2	FID	ACIS-S-5	7.03	8566	-0.158	-0.017	0.023	0.031	0.000000	0.000000	-1818.66	165.68
3	GUIDE	559941872	7.74	17130	-0.010	-0.227	0.065	0.104	336.770906	65.466155	-590.61	251.54
4	GUIDE	559942656	8.31	17126	-0.239	-0.175	0.080	0.125	335.233249	65.304591	1237.90	1772.10
5	GUIDE	559944168	8.11	17128	0.040	-0.078	0.077	0.134	337.323055	65.113328	-1900.99	1016.98
6	GUIDE	560464080	7.12	17133	0.082	0.237	0.063	0.099	338.477679	65.831661	-2248.48	-2072.85
7	GUIDE	560470752	8.23	17128	0.128	0.243	0.074	0.114	338.199817	65.999376	-1605.88	-2417.25

2.4 Star Slots

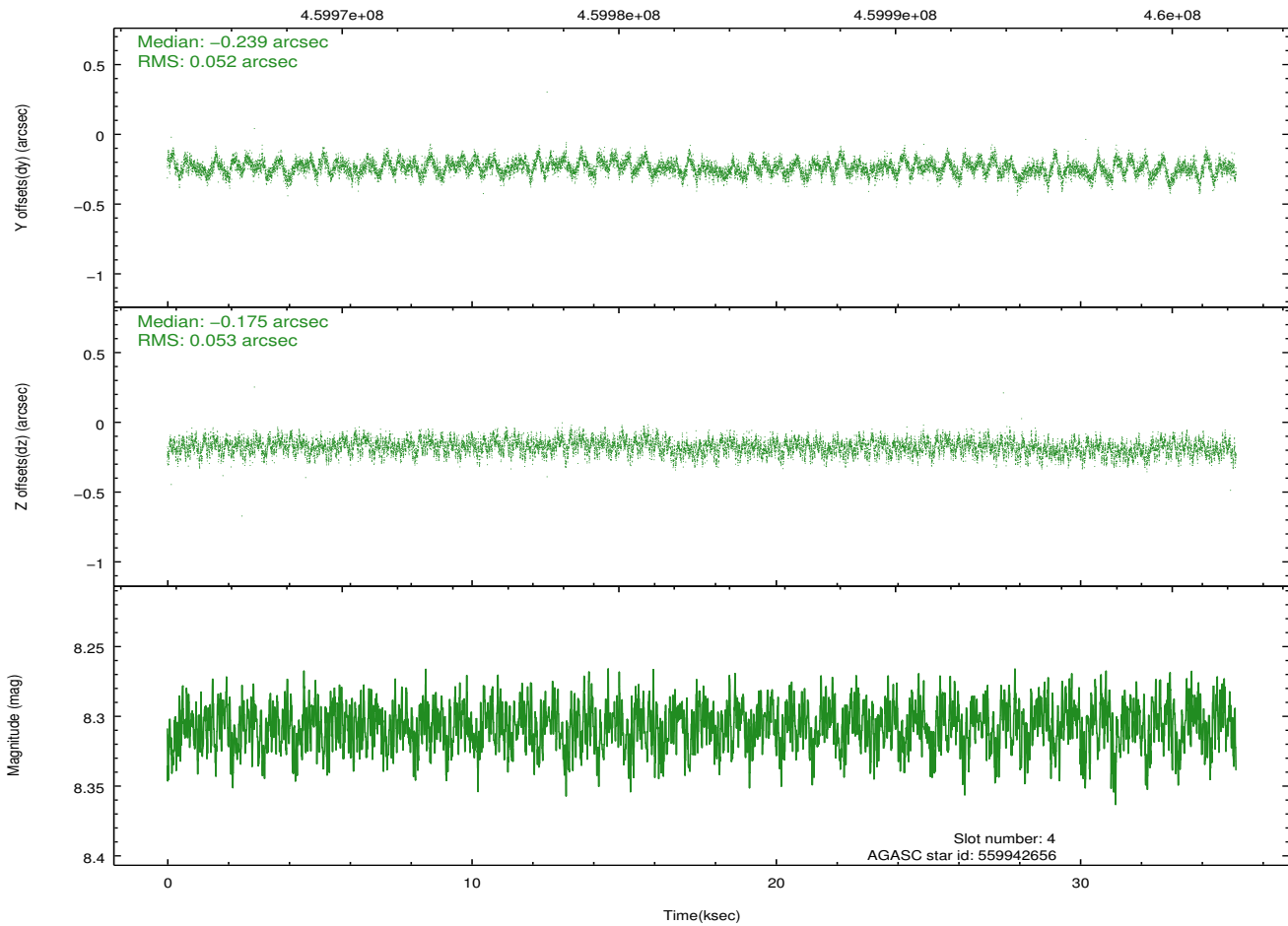
2.4.1 Slot 3



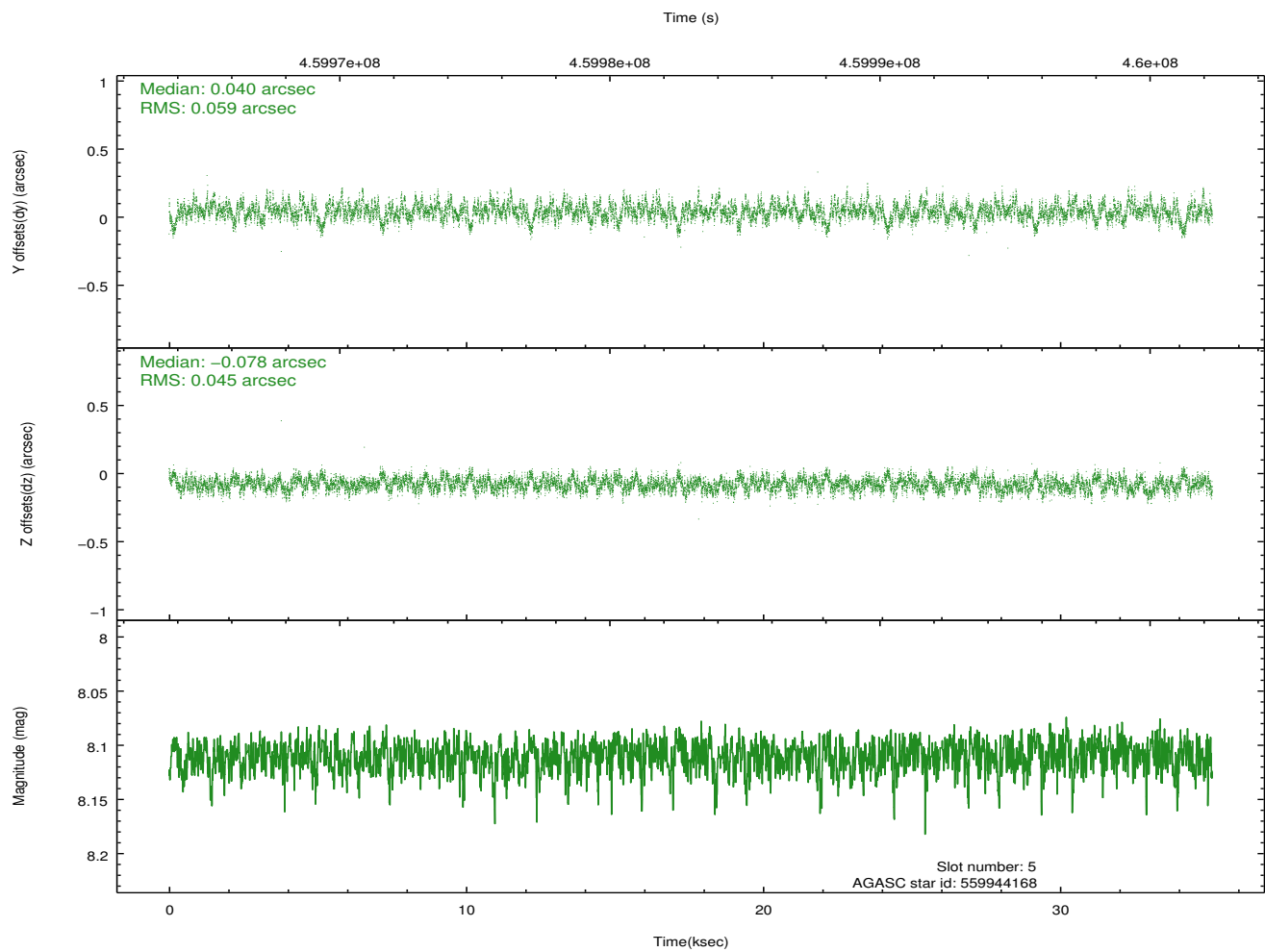
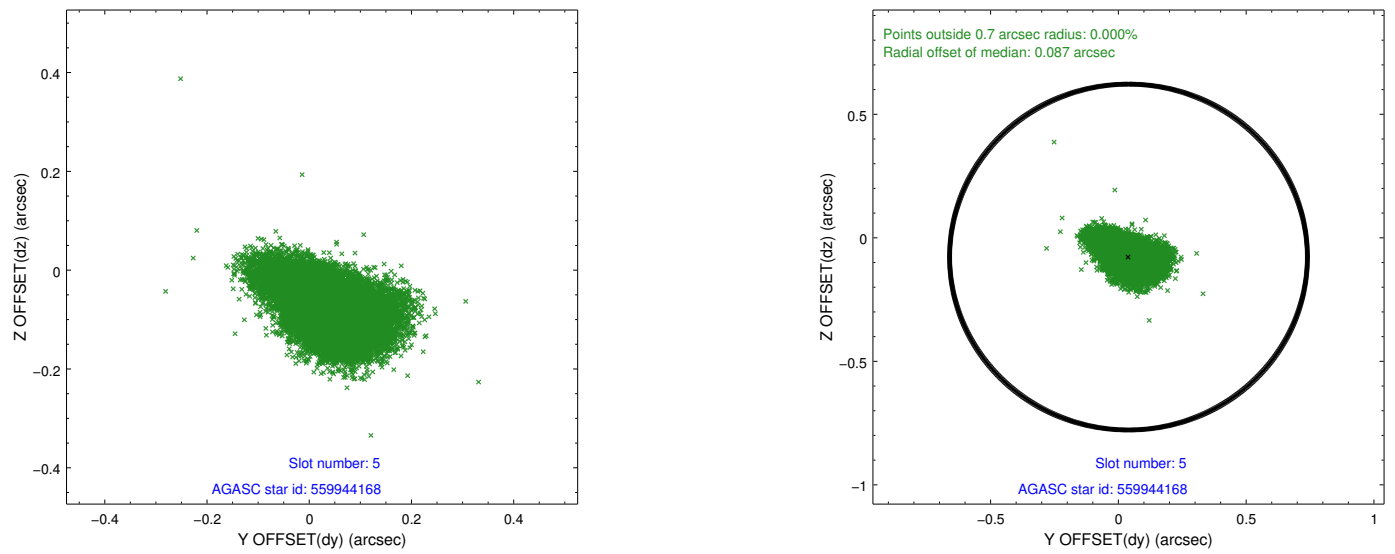
2.4.2 Slot 4



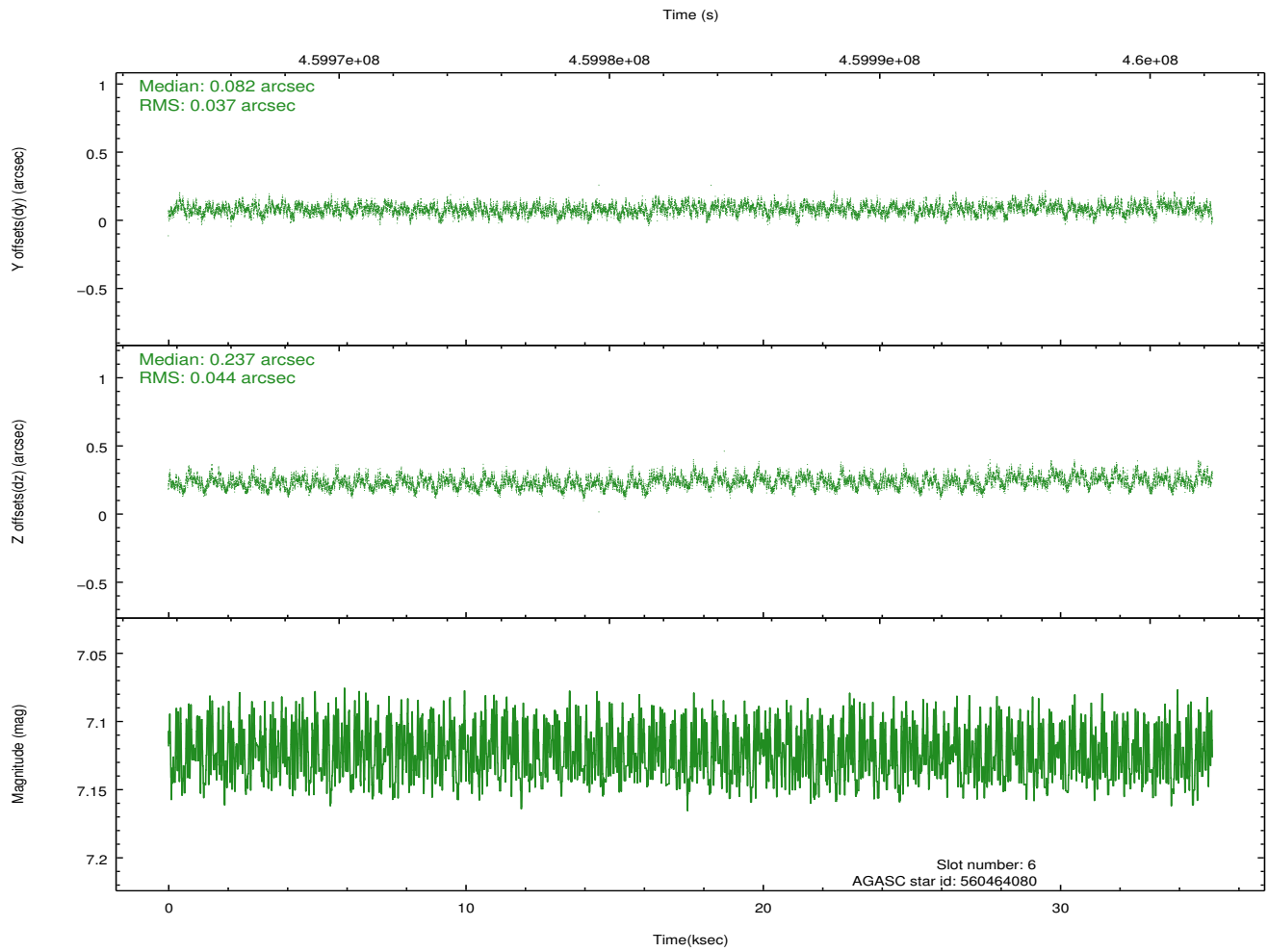
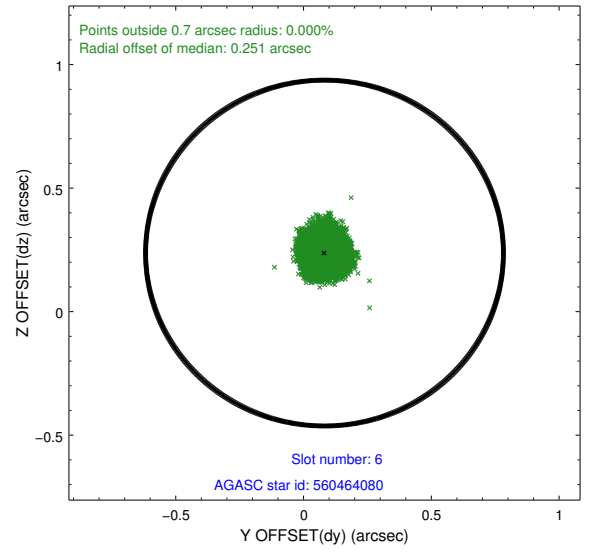
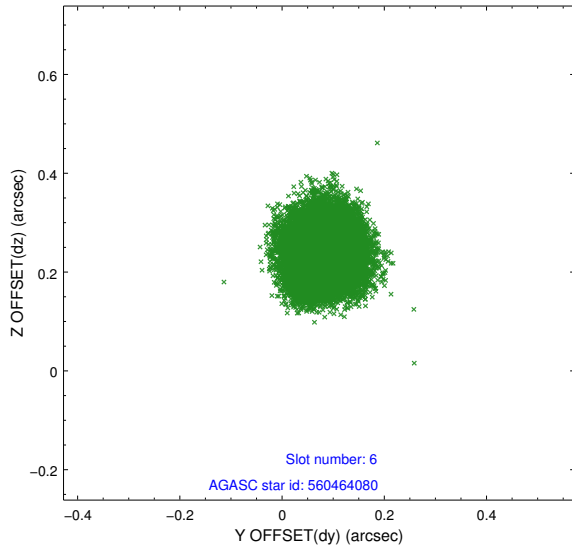
Time (s)



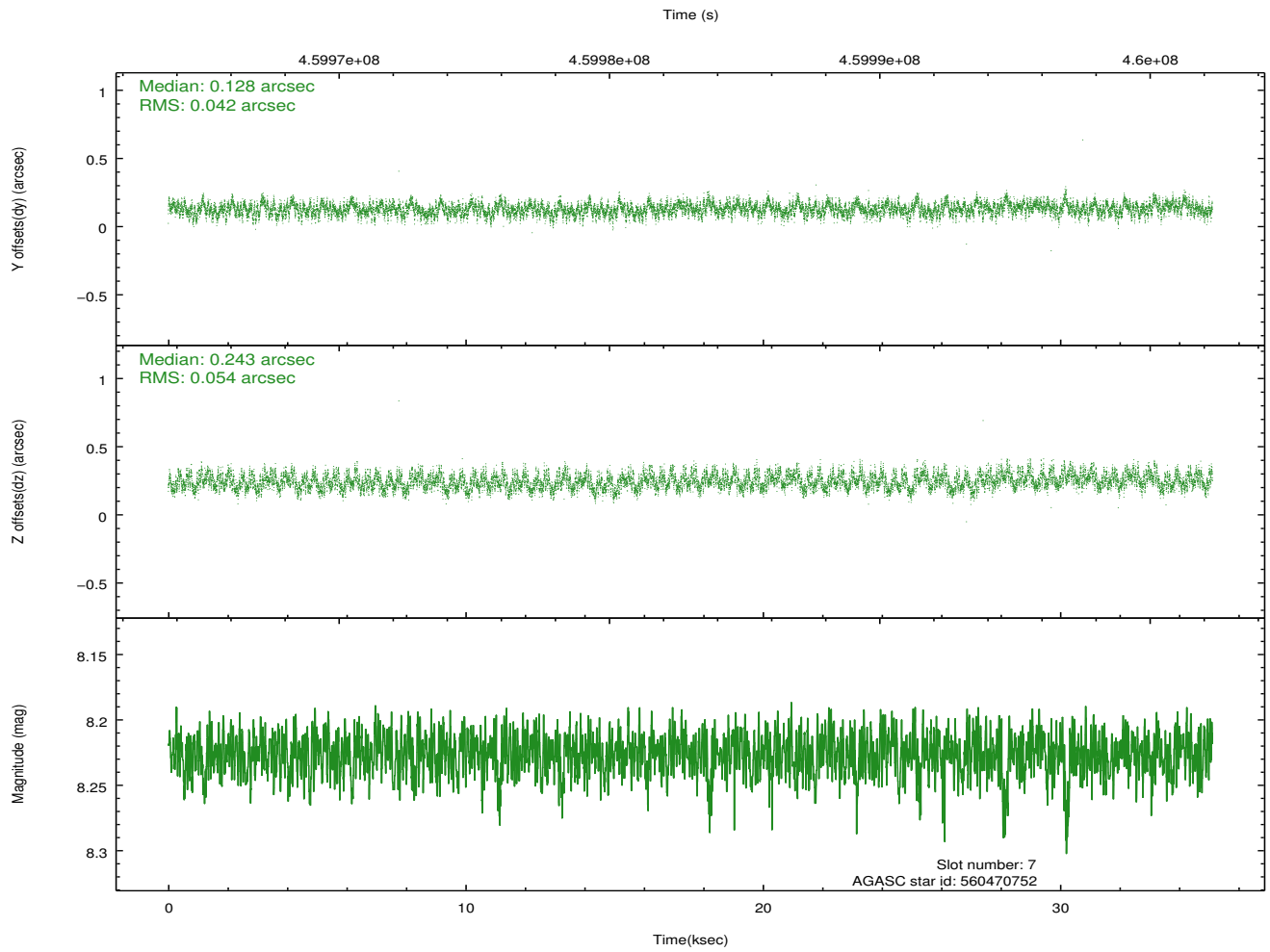
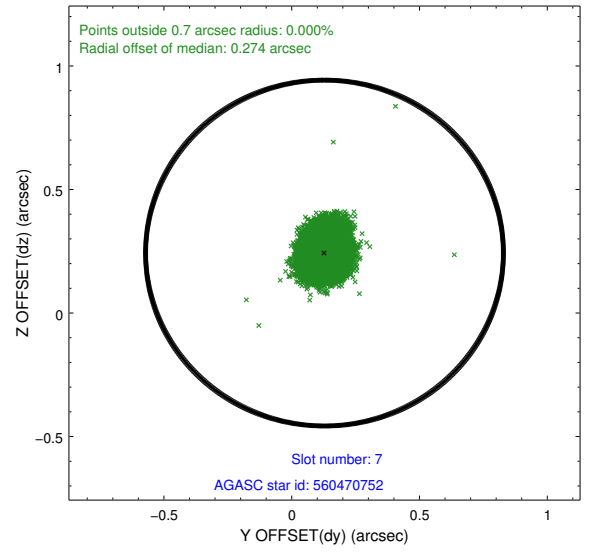
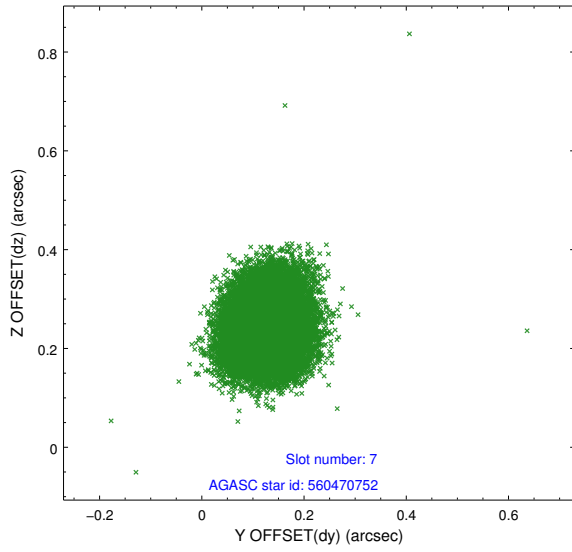
2.4.3 Slot 5



2.4.4 Slot 6

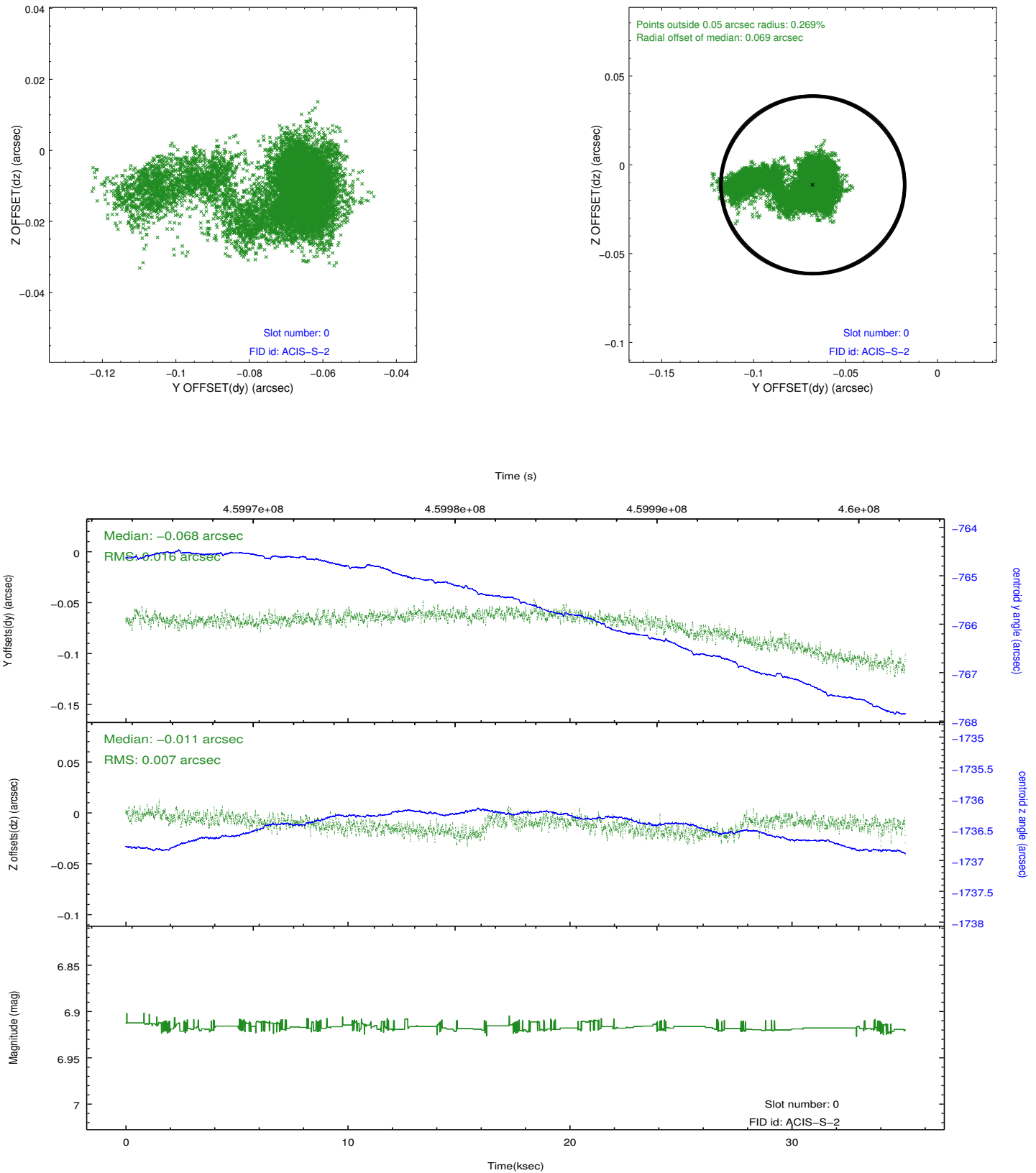


2.4.5 Slot 7

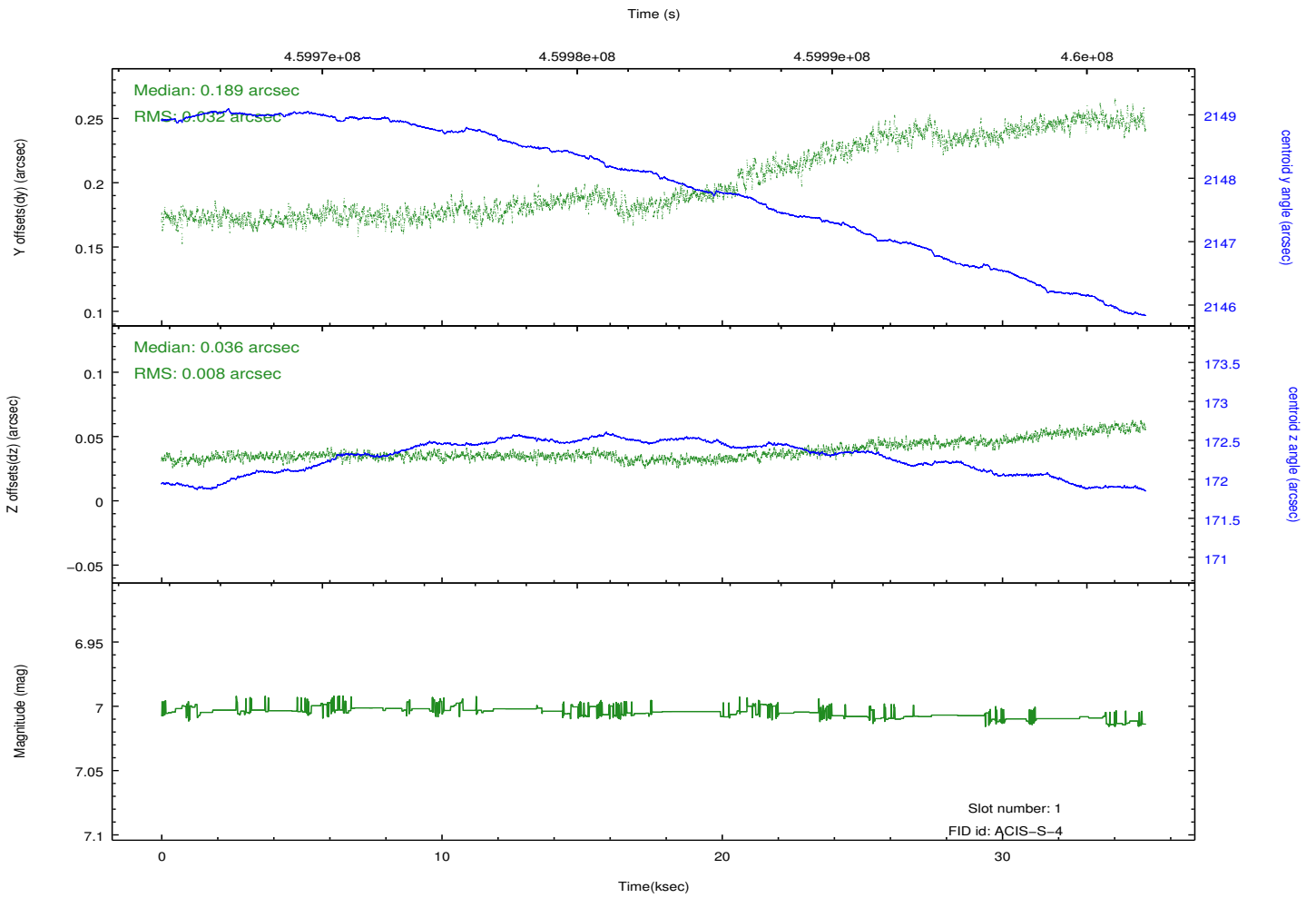
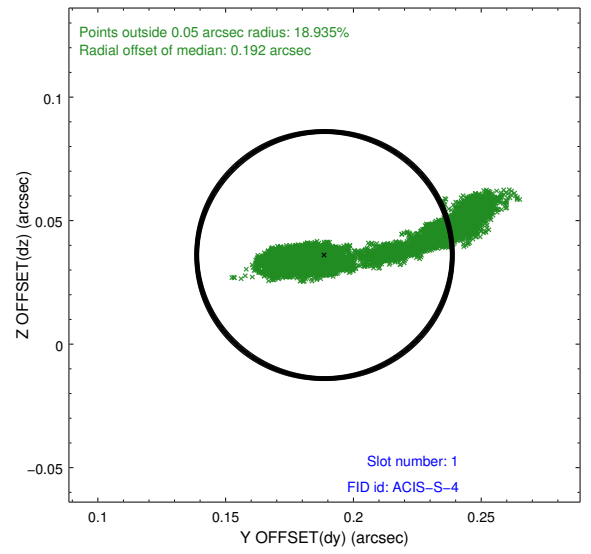
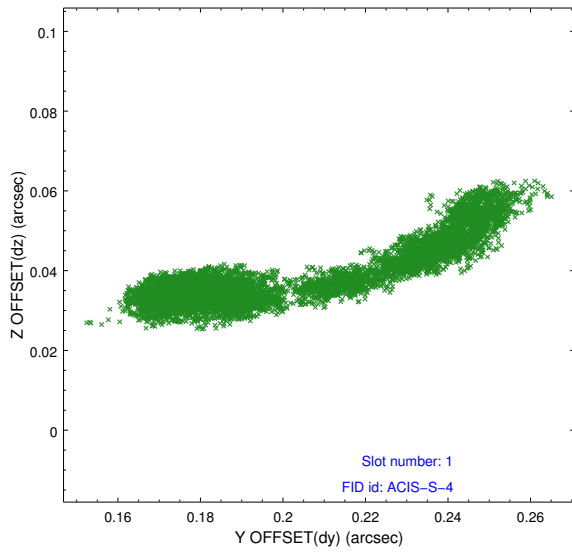


2.5 FID Slots

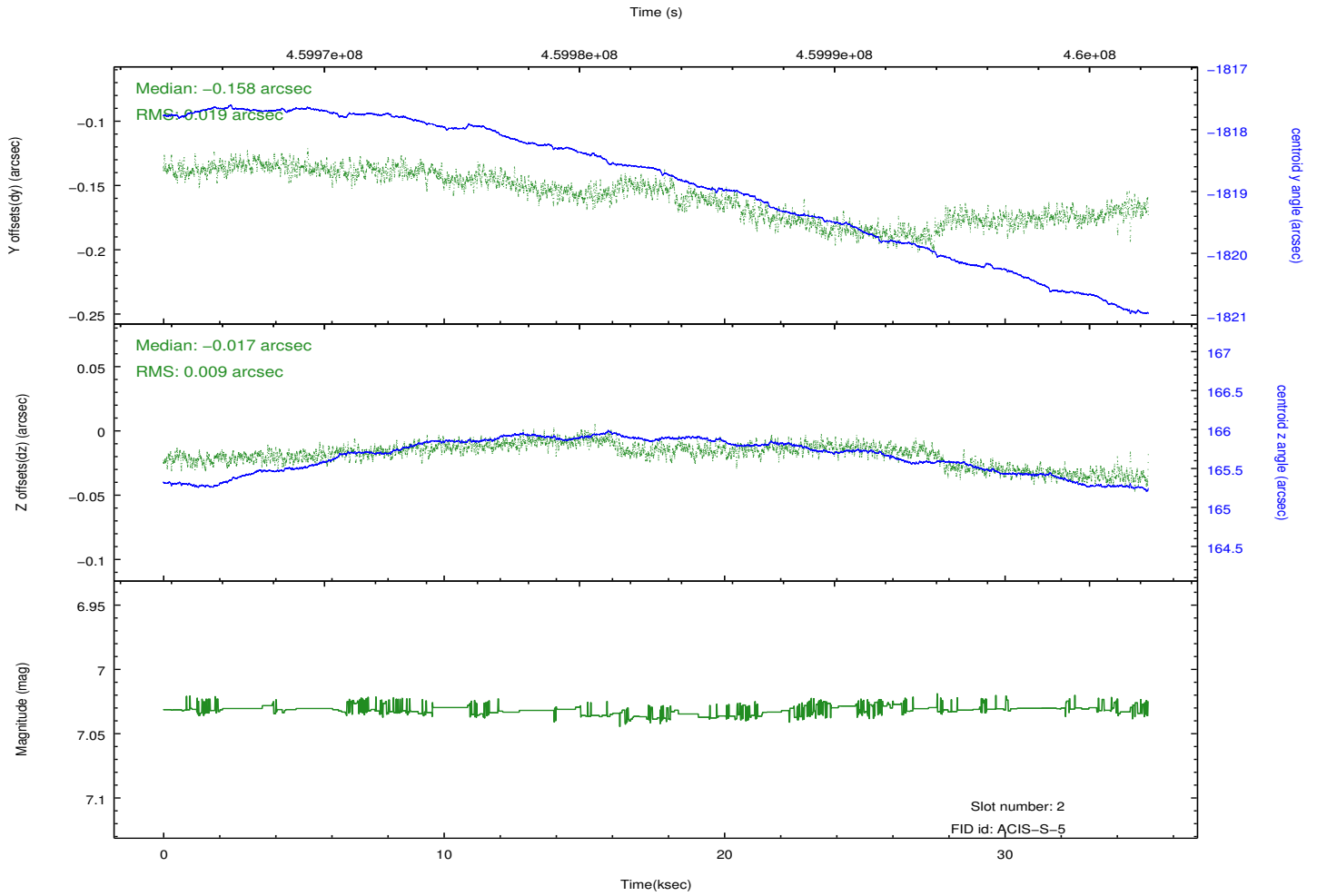
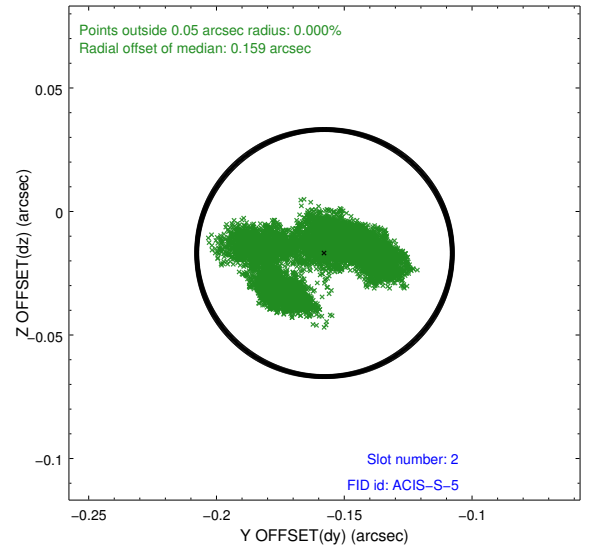
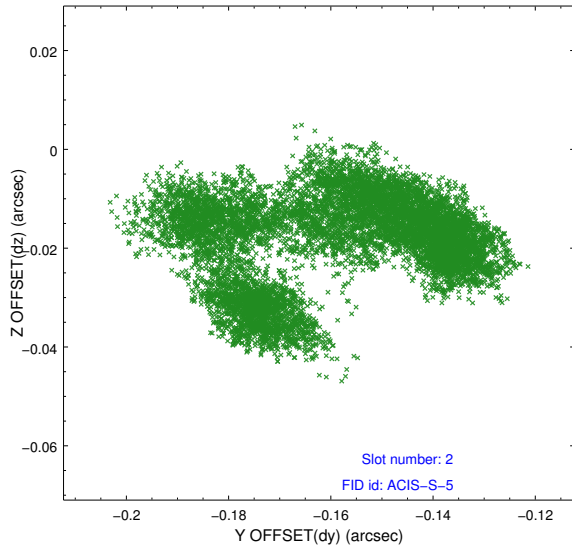
2.5.1 Slot 0



2.5.2 Slot 1



2.5.3 Slot 2



A Summary

A.1 Status

V&V Scientist	Jen Lauer
V&V Date (YYYY-MM-DD)	2012.07.30
V&V Edition	1
V&V Disposition and Status	OK
V&V Charge Time	35.067200269699

A.2 Comments