

V&V Reference Report

L2 ASCDS Version : 8.4.5

Observation 14433 - L2 Version 1
Chandra X-Ray Center

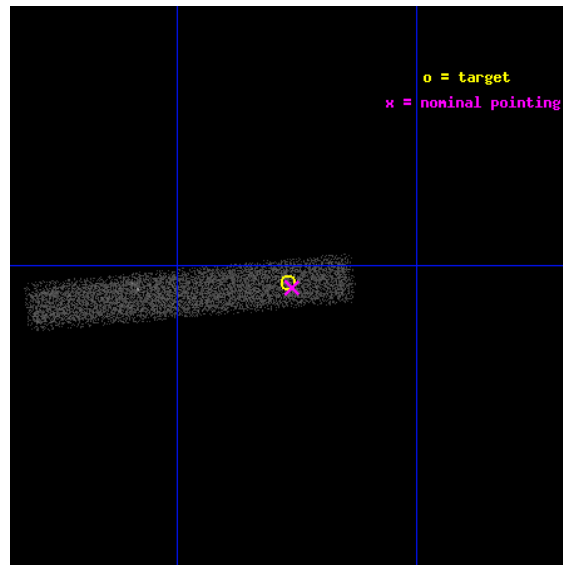
L2 Processing Date : Jun 25 2012

Contents

1	Front	2
2	OBI	3
2.1	OBI	3
2.1.1	Images	3
2.1.2	Bias	3
2.1.3	Parameters	4
2.1.4	Events	4
2.2	Compared Parameters	5
2.3	Aspect	6
2.4	Star Slots	9
2.4.1	Slot 3	9
2.4.2	Slot 4	10
2.4.3	Slot 5	11
2.4.4	Slot 6	12
2.4.5	Slot 7	13
2.5	FID Slots	14
2.5.1	Slot 0	14
2.5.2	Slot 1	15
2.5.3	Slot 2	16
A	Summary	17
A.1	Status	17
A.2	Comments	17

1 Front

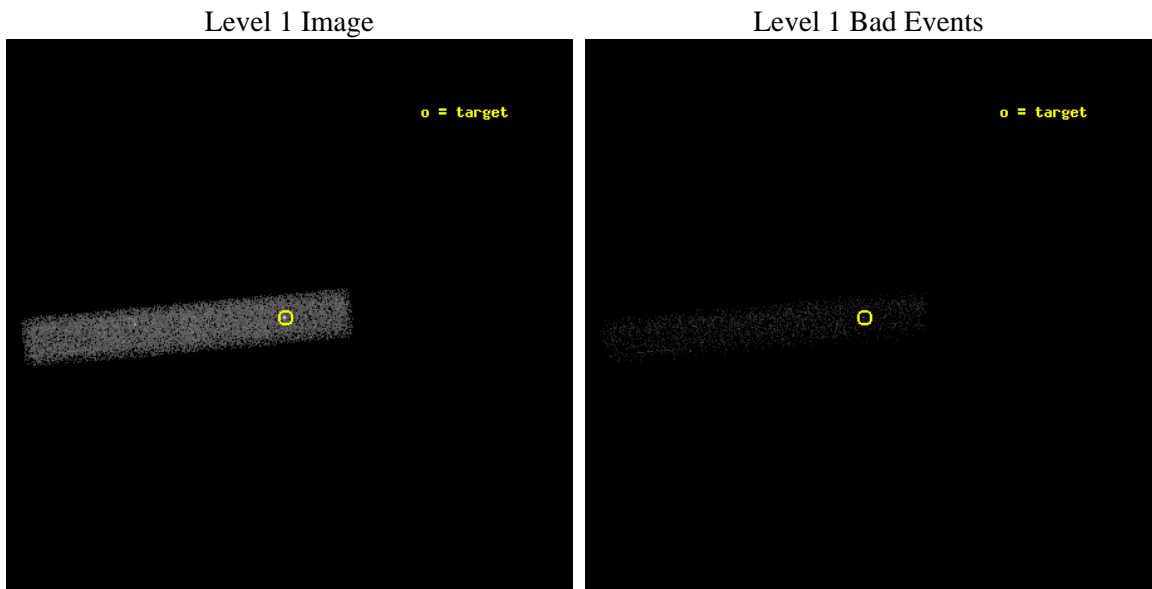
seq_num	401432	Sequence number
obs_id	14433	Observation id
title	Crust cooling of accretion heated neutron stars	Proposal title
observer	Dr. Rudy Wijnands	Principal investigator
object	MAXIJ 0556-332	Source name
dtcycle	0	
cycle	P	events from which exps? Prim/Second/Both
ra_targ	89.1925	Observer's specified target RA [deg]
dec_targ	-33.173972	Observer's specified target Dec [deg]
ra_nom	89.190310292114	Nominal RA [deg]
dec_nom	-33.176387742045	Nominal Dec [deg]
roll_nom	174.74972880346	Nominal Roll [deg]
revision	1	Processing version of data
ontime	20069.552027881	Sum of GTIs [s]
livetime	18202.024331472	Livetime [s]
ontime7	20069.552027881	Sum of GTIs [s]
l2events	11893	Number of level 2 events



2 OBI

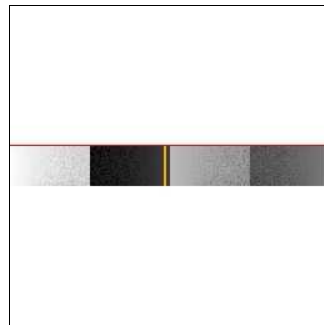
2.1 OBI

2.1.1 Images



2.1.2 Bias

Chip 7



2.1.3 Parameters

obi_num	0	Obi number	sched_exp_time	20000.000000	[s] Scheduled observation exposure time
ascdsver	8.4.5	Processing system revision	ontime	20069.552027881	Sum of GTIs [s]
caldbver	4.4.10	 	ontime7	20069.552027881	Sum of GTIs [s]
date	2012-06-25T16:03:15	Date and time of file creation	l1events	22739	Number of level 1 events
revision	1	Processing version of data			

2.1.4 Events

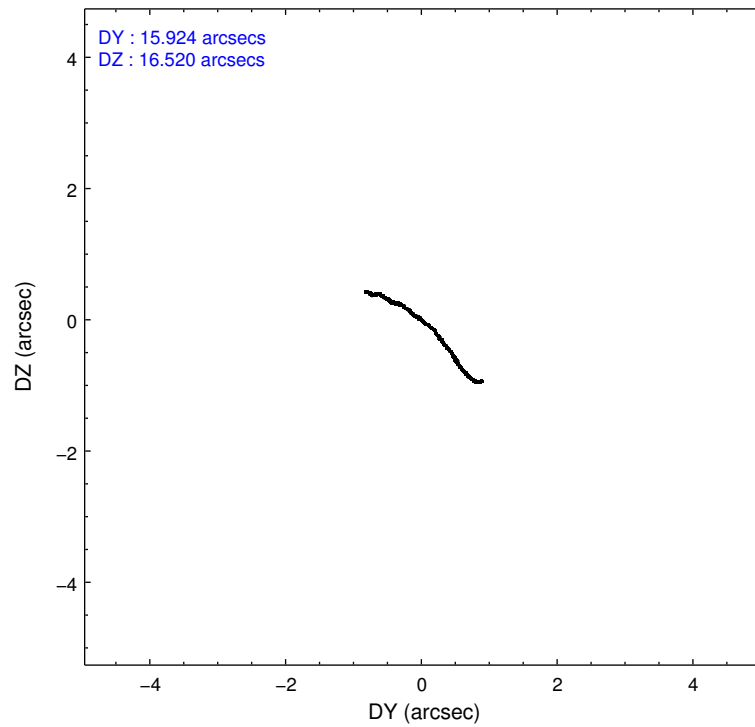
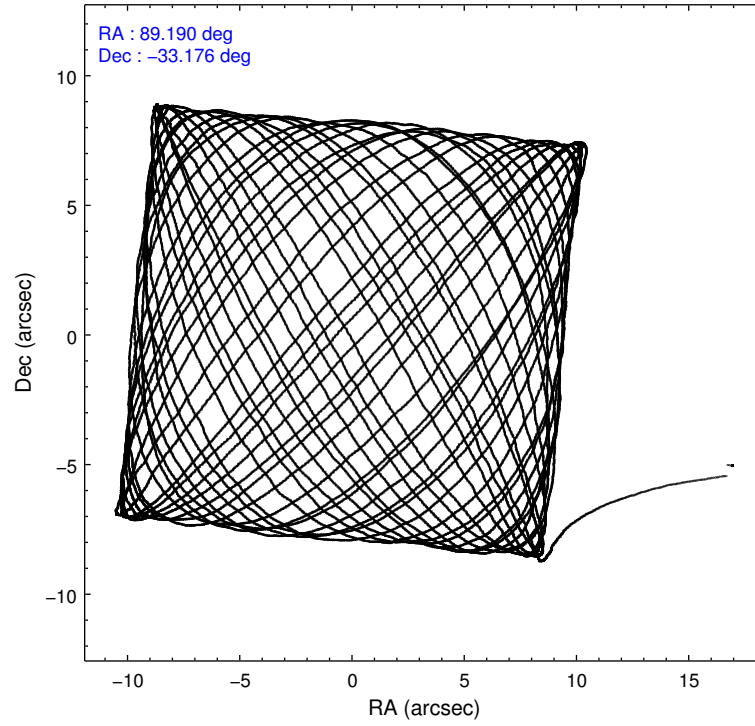
	ccd 7
level 1 events	22739
rejected events	10358
rejected %	45%

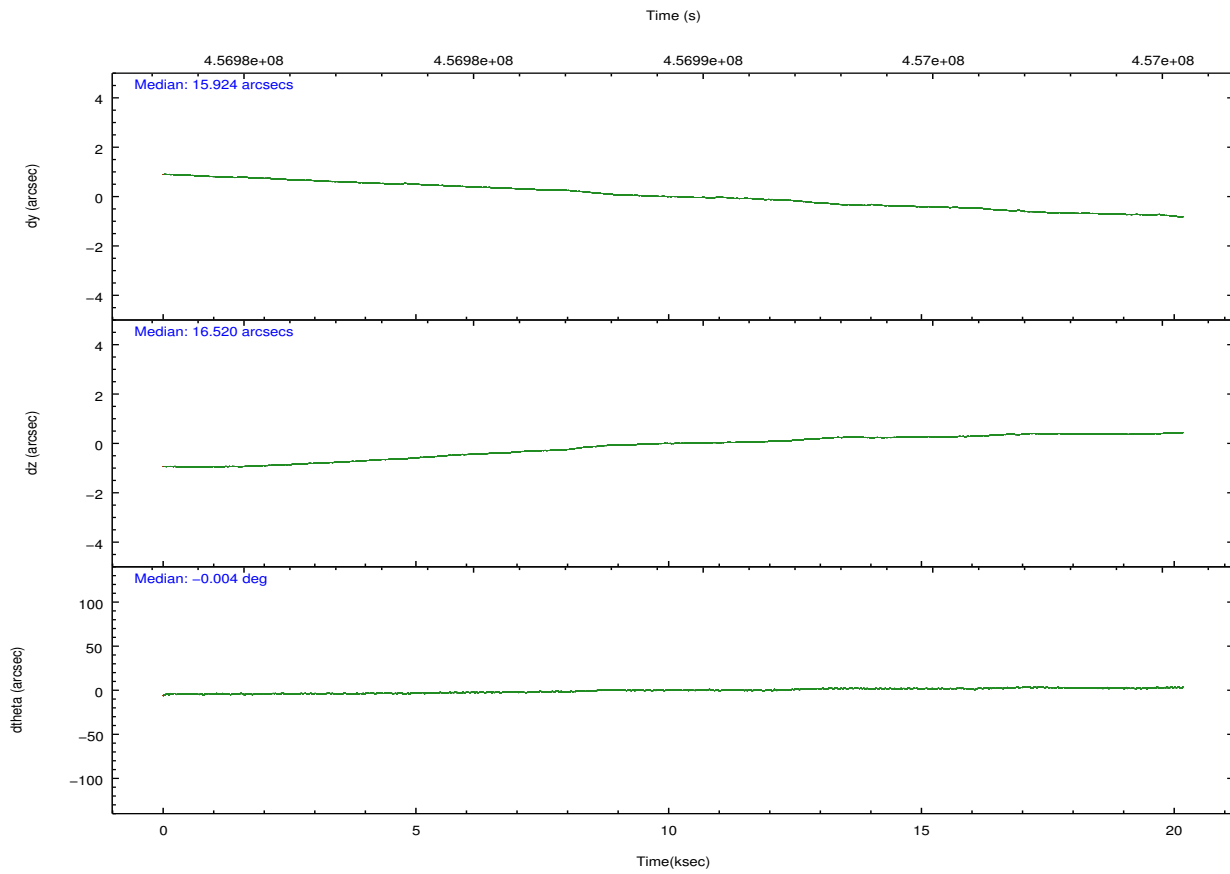
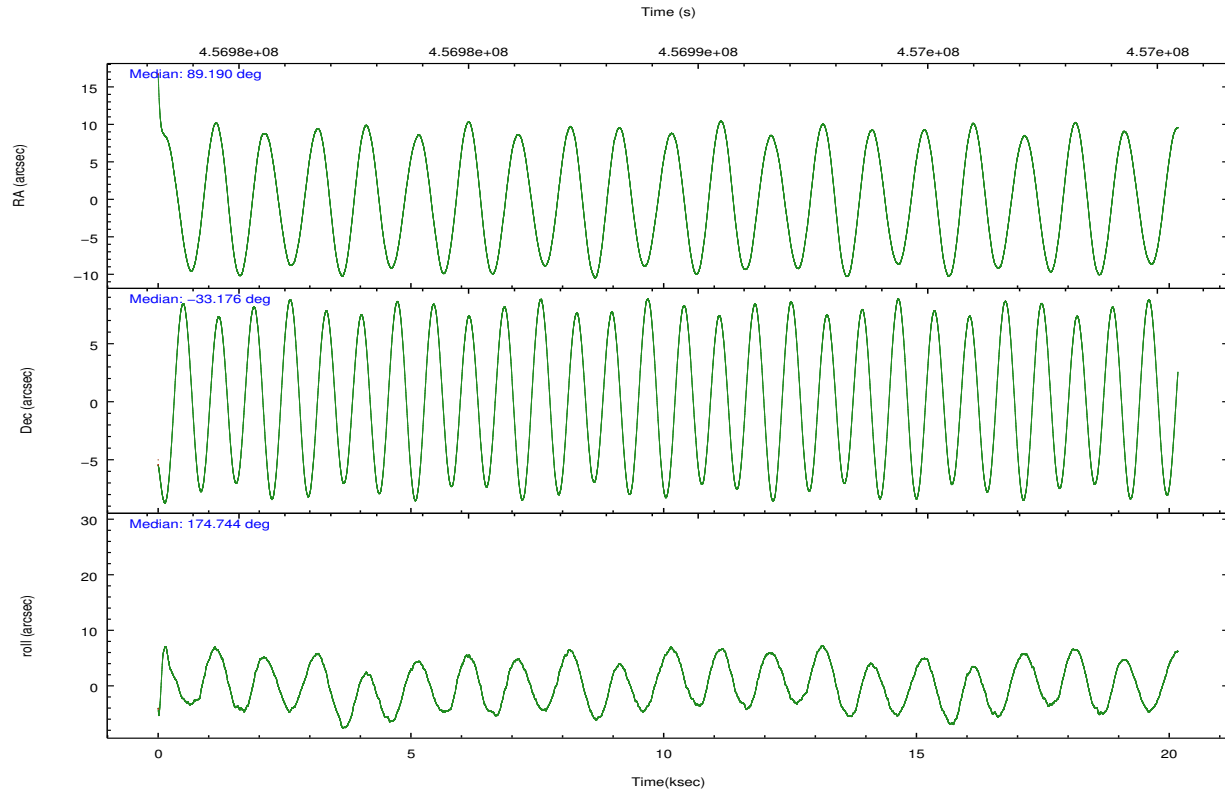
	ccd 7
grade 0 events	1632
	7%
grade 1 events	33
	0%
grade 2 events	2592
	11%
grade 3 events	1640
	7%
grade 4 events	1547
	6%
grade 5 events	2121
	9%
grade 6 events	4970
	21%
grade 7 events	8204
	36%

2.2 Compared Parameters

Parameter	Planned	Actual	Parameter	Planned	Actual
Instrument	ACIS	ACIS	Obspar format version number	7	7
Detector	ACIS-7	ACIS-7	Obspar file type	PREDICTED	ACTUAL
Grating	NONE	NONE	Obspar update status	NONE	UPDATED
Data mode	FAINT	FAINT	Number of optional ACIS chips dropped	0	0
Observation mode	POINTING	POINTING	On-chip summing requested	N	N
[deg] Pointing RA	89.219762	89.19031029211385	Subarray requested	CUSTOM	1/8
[deg] Pointing Dec	-33.164575	-33.17638774204526	Subarray start row	449	449
[deg] Pointing Roll	174.609222	174.7497288034598	Subarray row count	128	128
[mm] SIM focus pos	-0.684267	-0.6828225247311905	Alternating exposures requested	N	N
[mm] SIM defocus	0	0.001444936568705701	[s] Primary exposure time	0.000000	0.4
[mm] SIM translation stage pos	-190.132523	-190.1400660498719			
[mm] SIM translation stage offset	0	0.00754346686406393			
[s] Observation start time (MET)	456979438.184000	456978186.81162			
Observation start date	2012-06-25T02:42:52	2012-06-25T02:23:06			
[s] Observation end time (MET)	456999438.184000	457000041.35029			
Observation end date	2012-06-25T08:16:12	2012-06-25T08:27:21			
Read mode	TIMED	TIMED			

2.3 Aspect



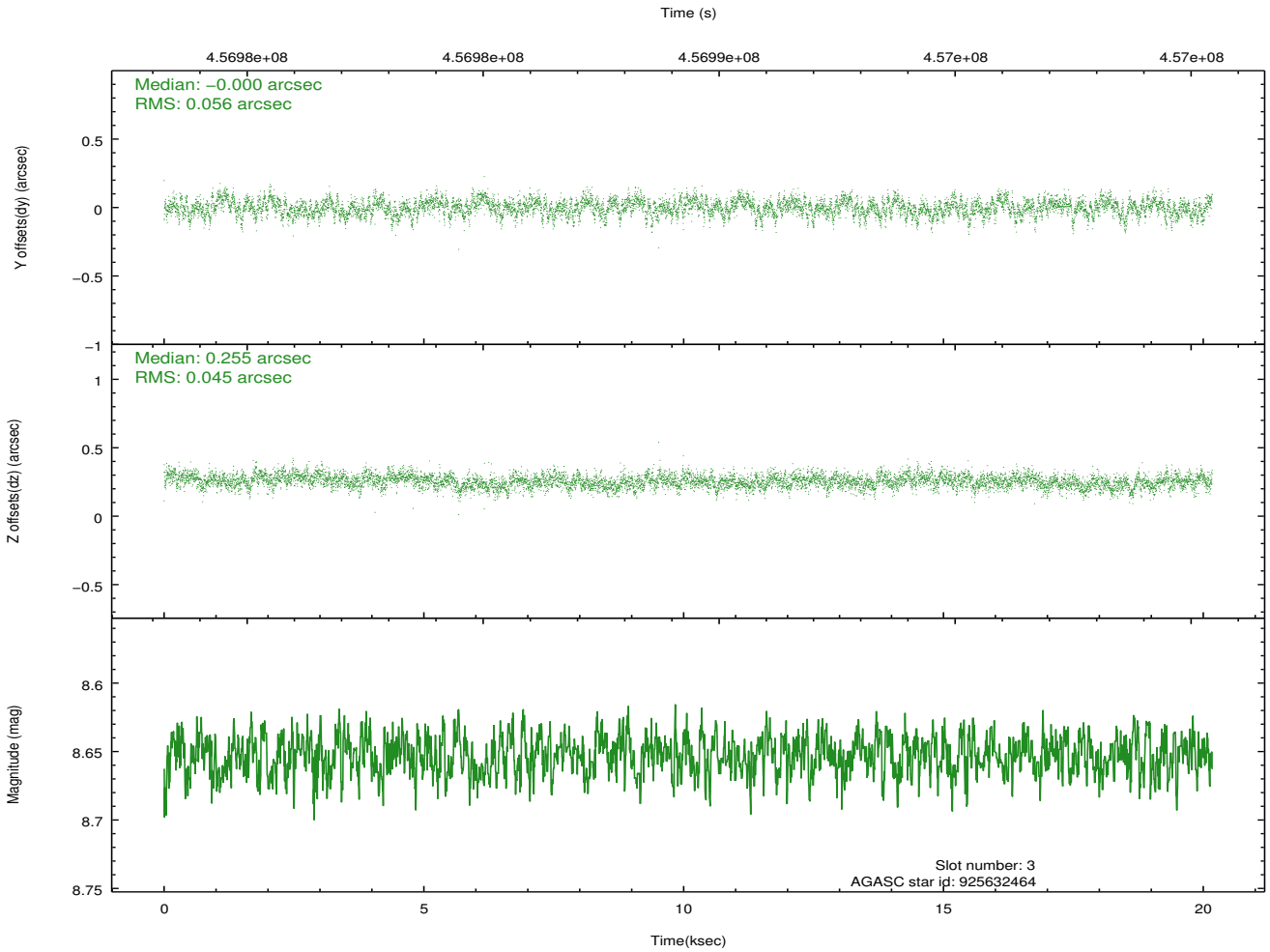
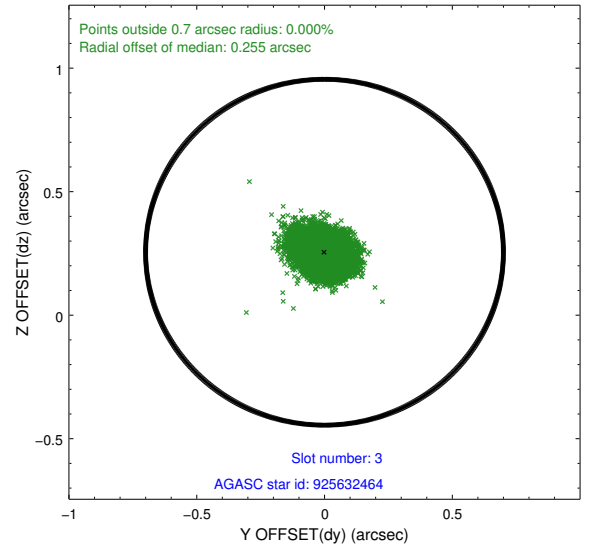
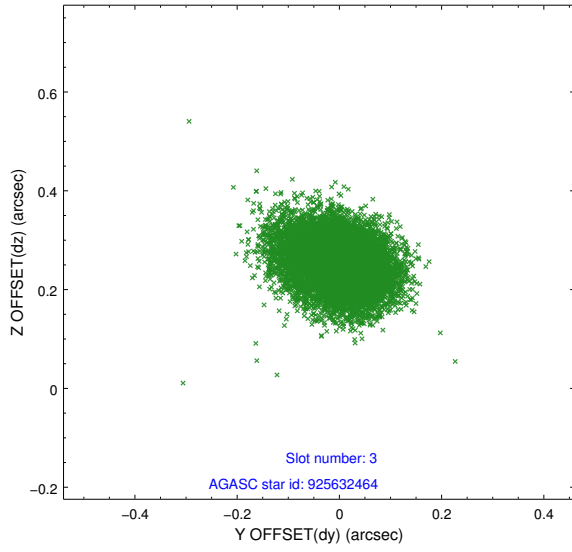


Slot Statistics

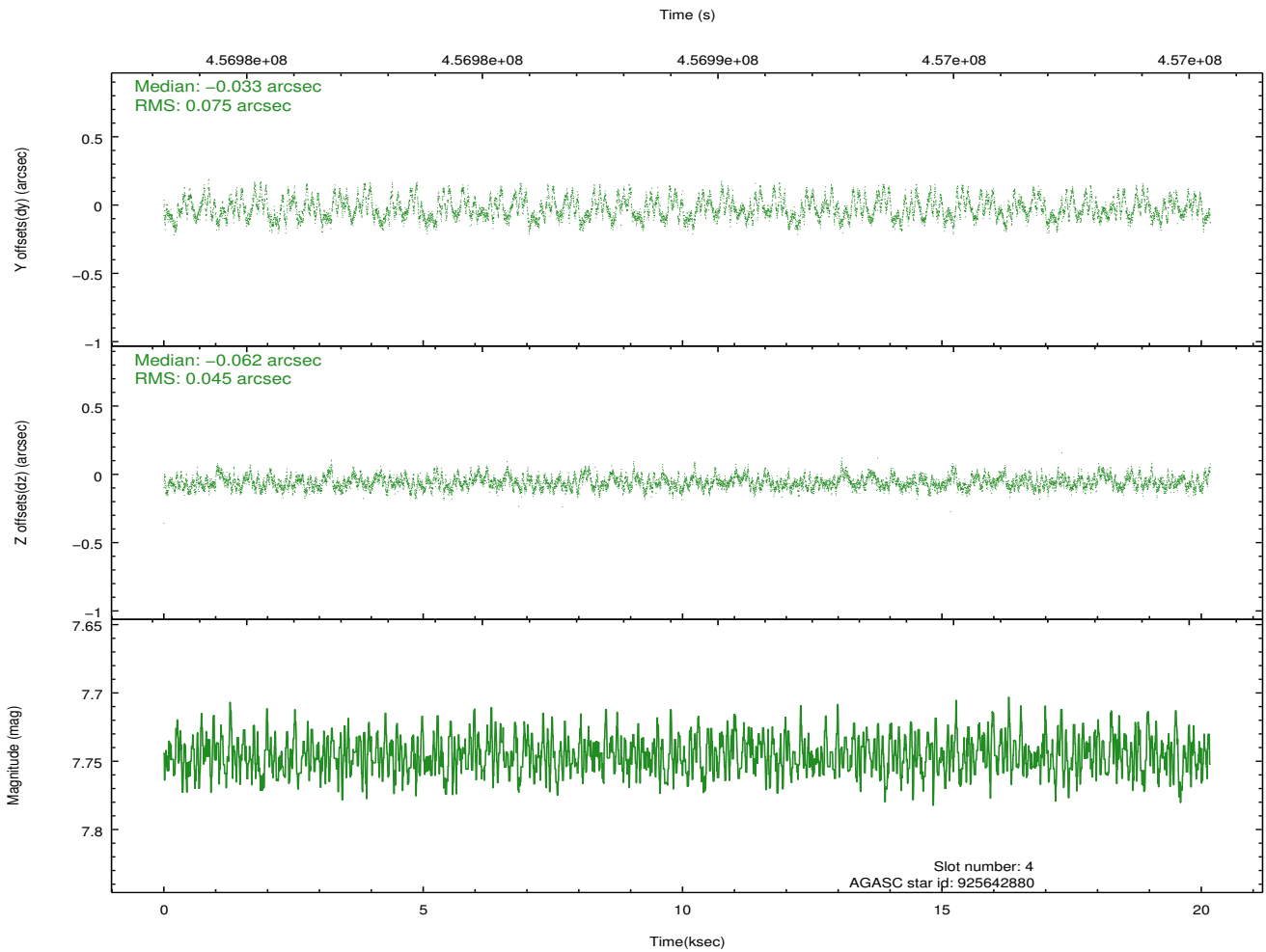
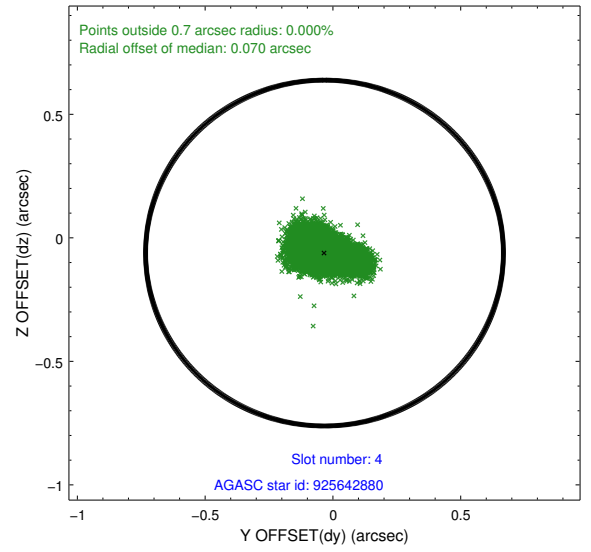
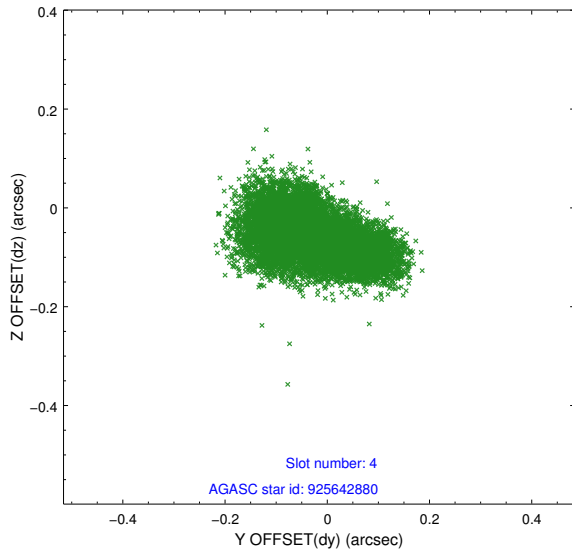
slot	status	id	mag	n_pts	med_dy	med_dz	dr1	dr2	ra	dec	mean_y	mean_z
0	FID	ACIS-S-2	6.93	4921	-0.120	-0.026	0.017	0.027	0.000000	0.000000	-769.07	-1737.81
1	FID	ACIS-S-4	7.01	4921	0.237	0.064	0.009	0.017	0.000000	0.000000	2144.48	170.56
2	FID	ACIS-S-5	7.04	4921	-0.147	-0.030	0.017	0.038	0.000000	0.000000	-1821.70	164.36
3	GUIDE	925632464	8.65	9837	-0.000	0.255	0.076	0.126	88.809884	-32.517498	1457.77	-2199.41
4	GUIDE	925642880	7.75	9839	-0.033	-0.062	0.094	0.153	89.133148	-33.434507	167.85	991.68
5	GUIDE	925645552	7.59	9839	-0.110	-0.179	0.067	0.106	88.738097	-33.665766	1266.88	1935.38
6	GUIDE	925643520	9.25	9829	-0.034	-0.080	0.104	0.164	88.970468	-33.727415	552.91	2089.30
7	GUIDE	925645016	9.08	9835	0.172	0.065	0.082	0.134	89.945223	-33.615732	-2318.54	1420.31

2.4 Star Slots

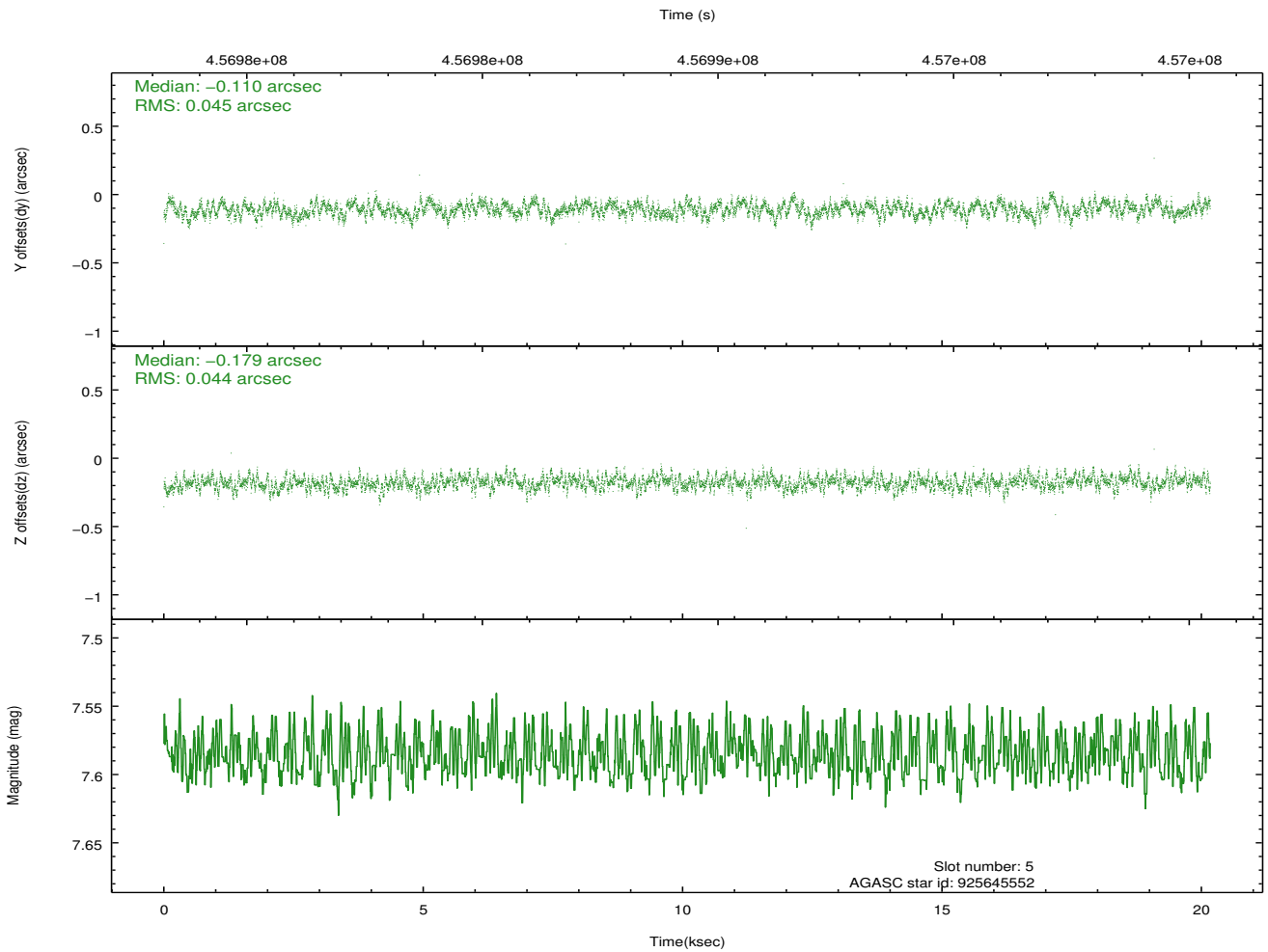
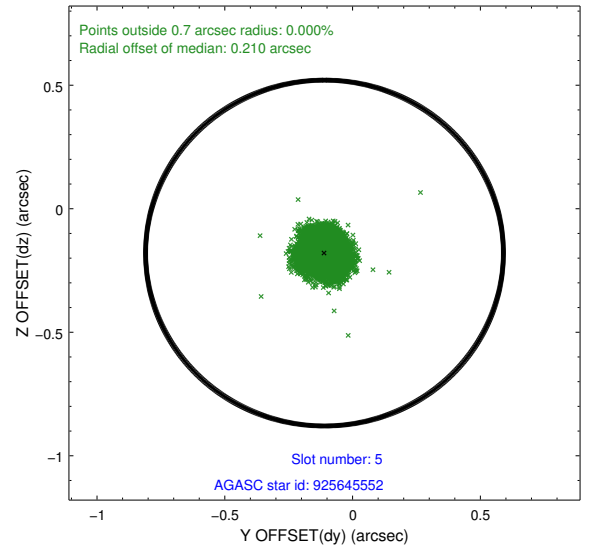
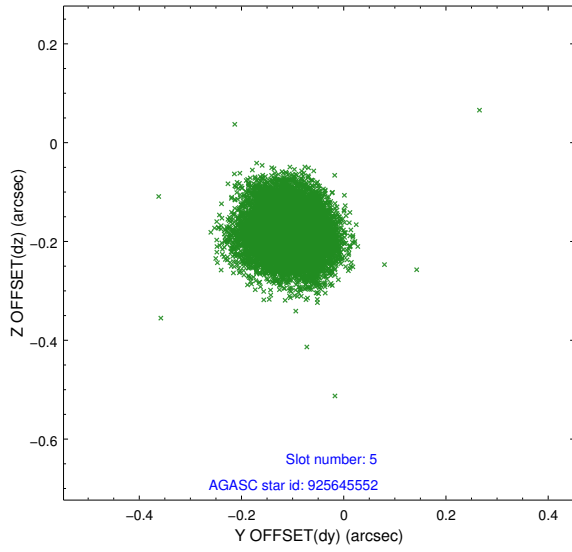
2.4.1 Slot 3



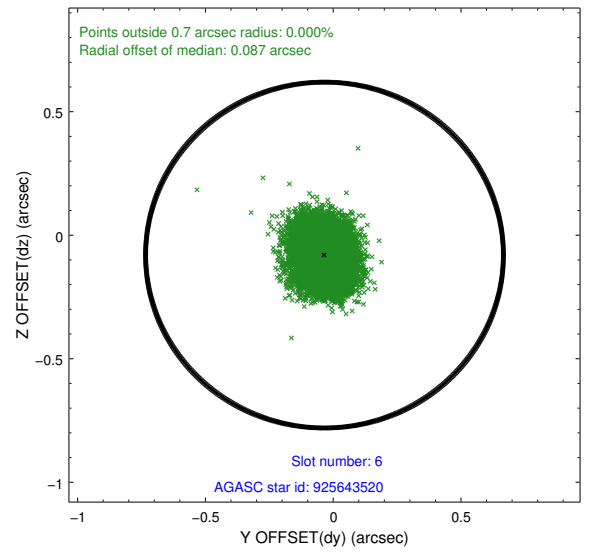
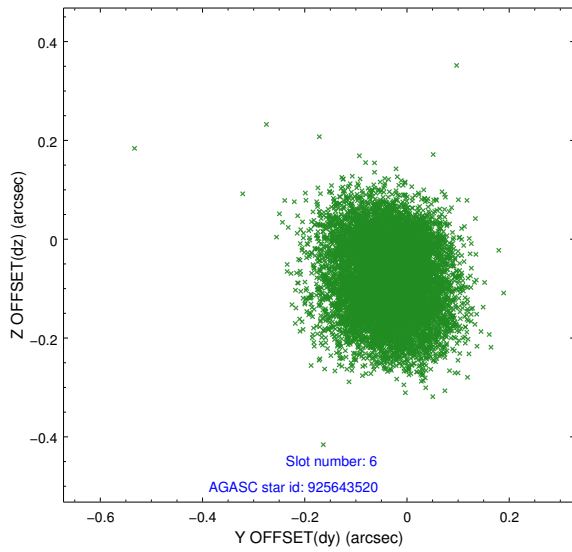
2.4.2 Slot 4



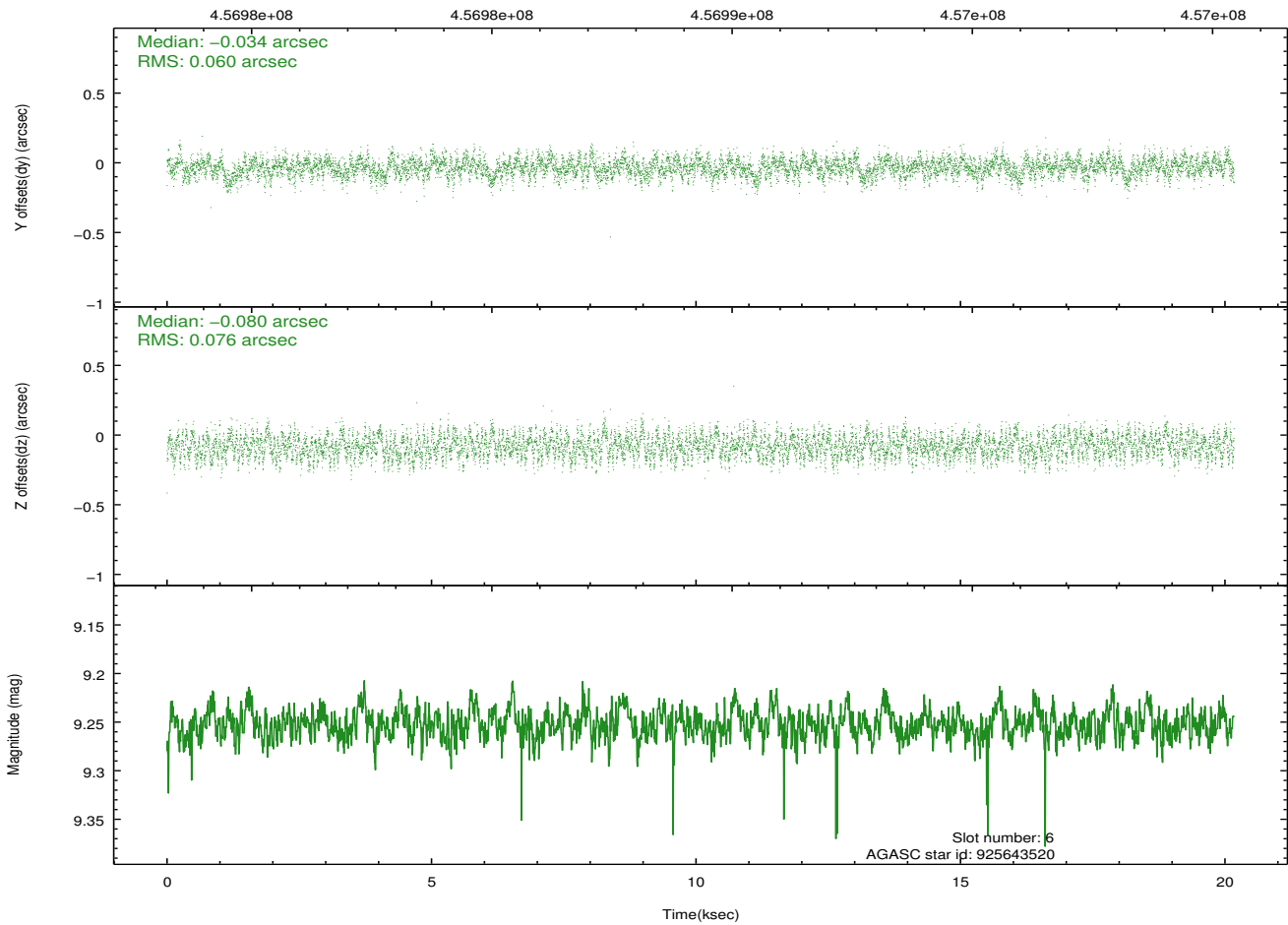
2.4.3 Slot 5



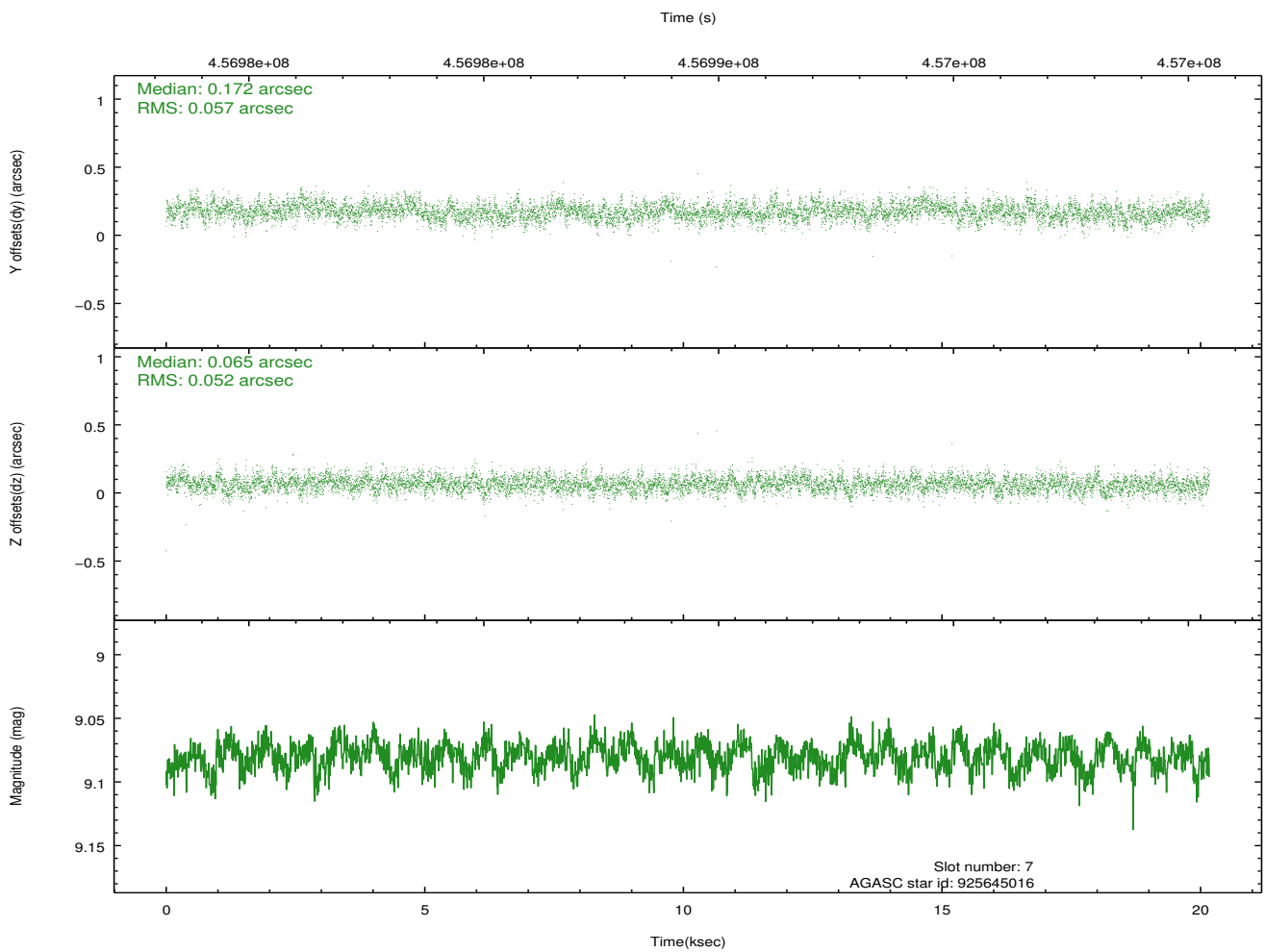
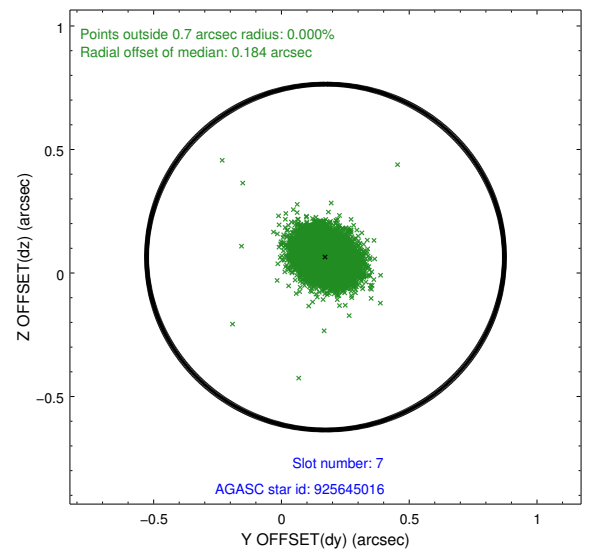
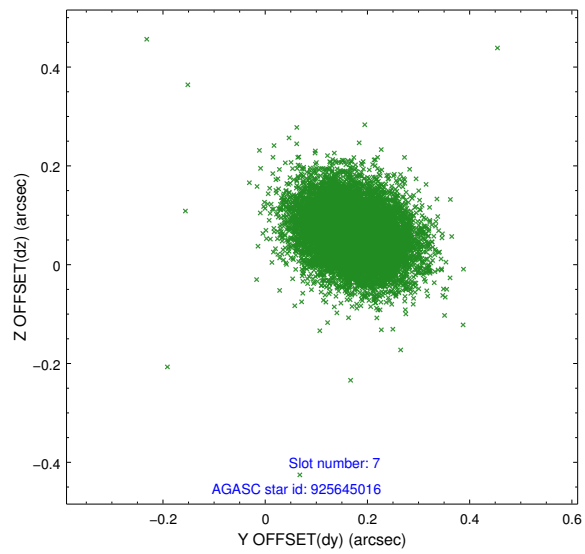
2.4.4 Slot 6



Time (s)

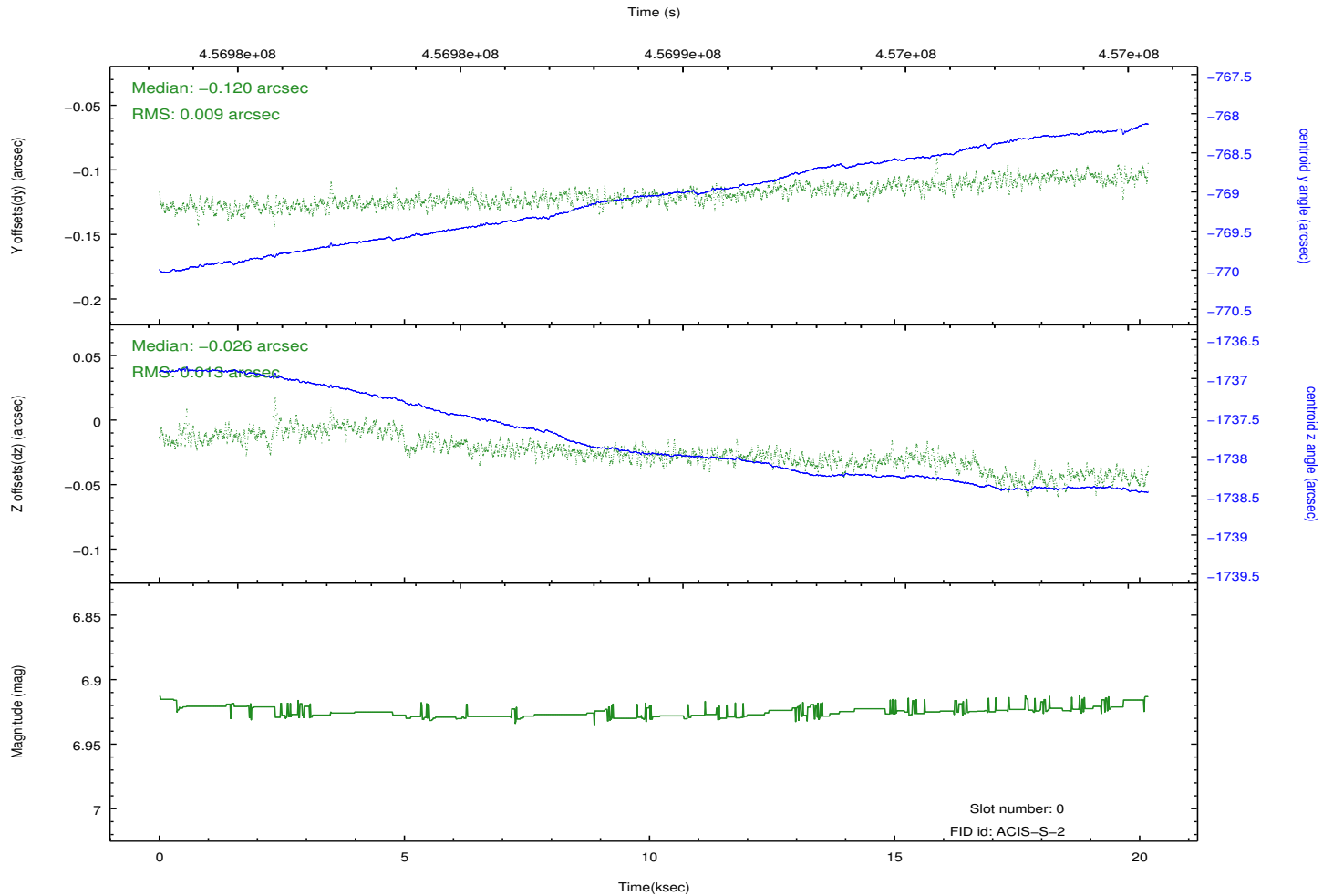
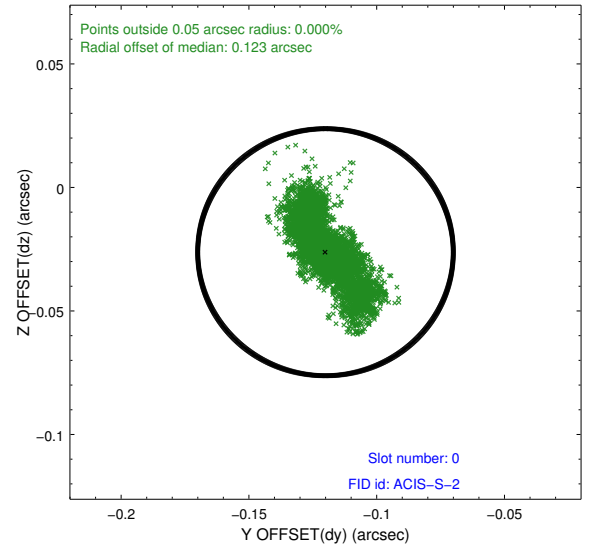
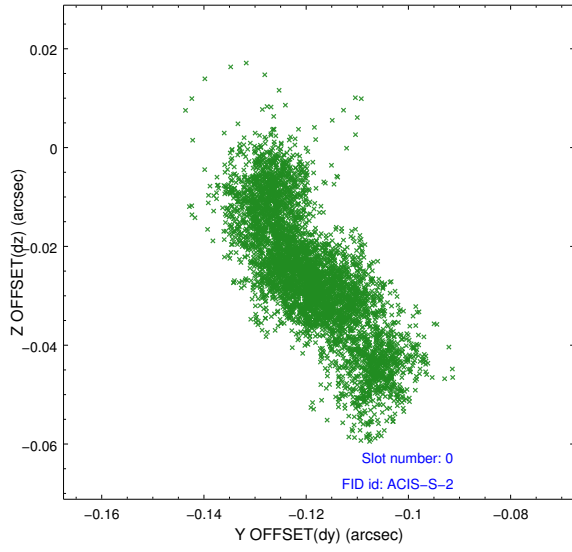


2.4.5 Slot 7

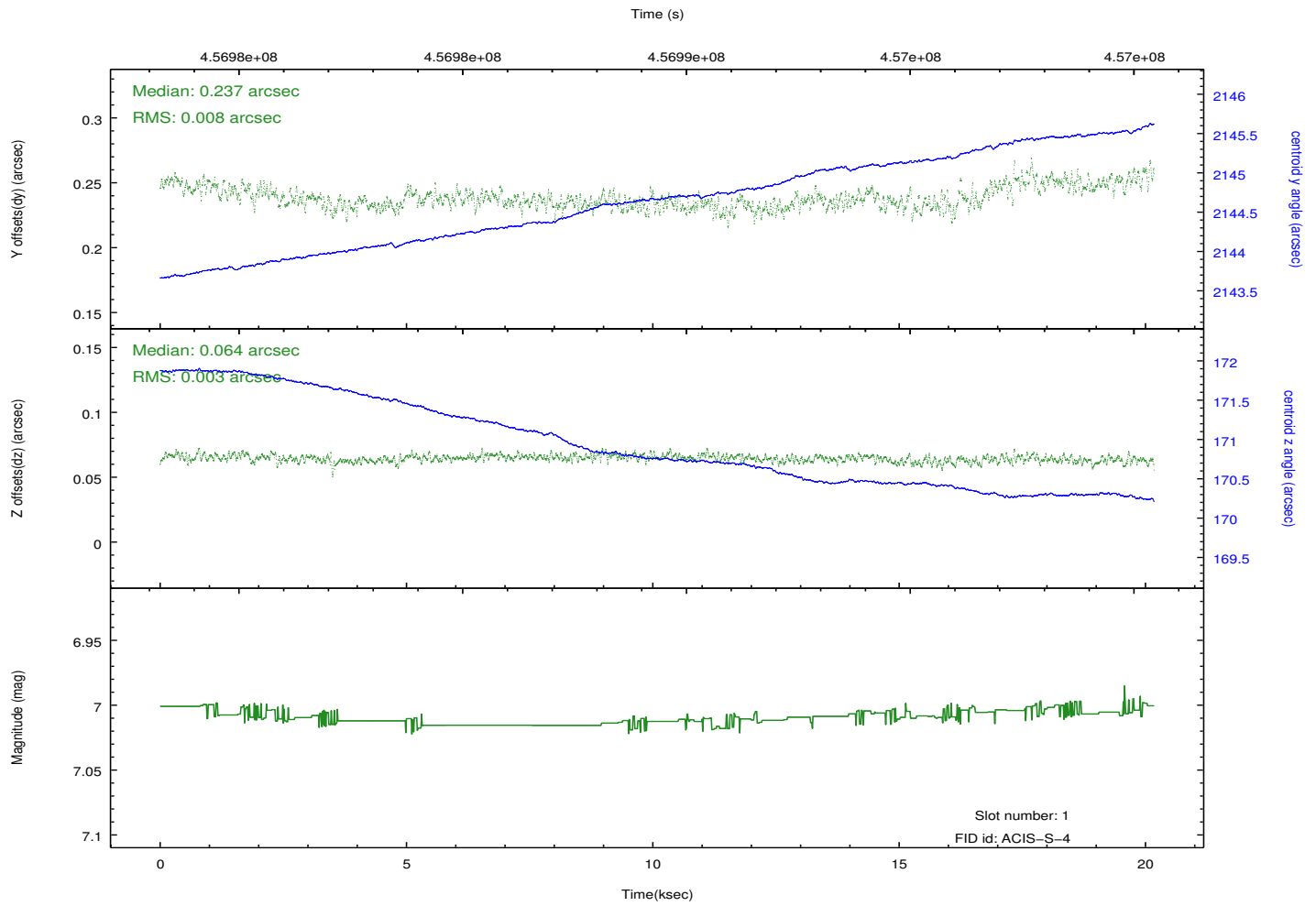
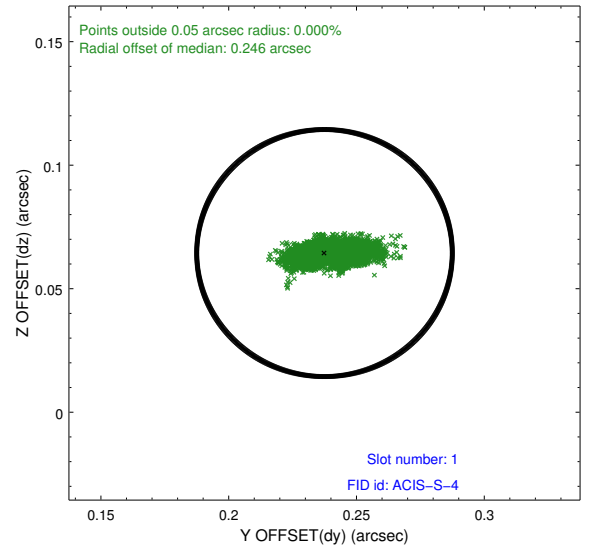
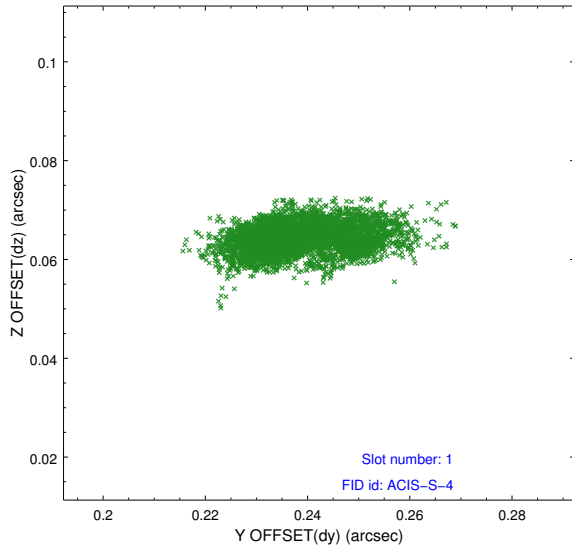


2.5 FID Slots

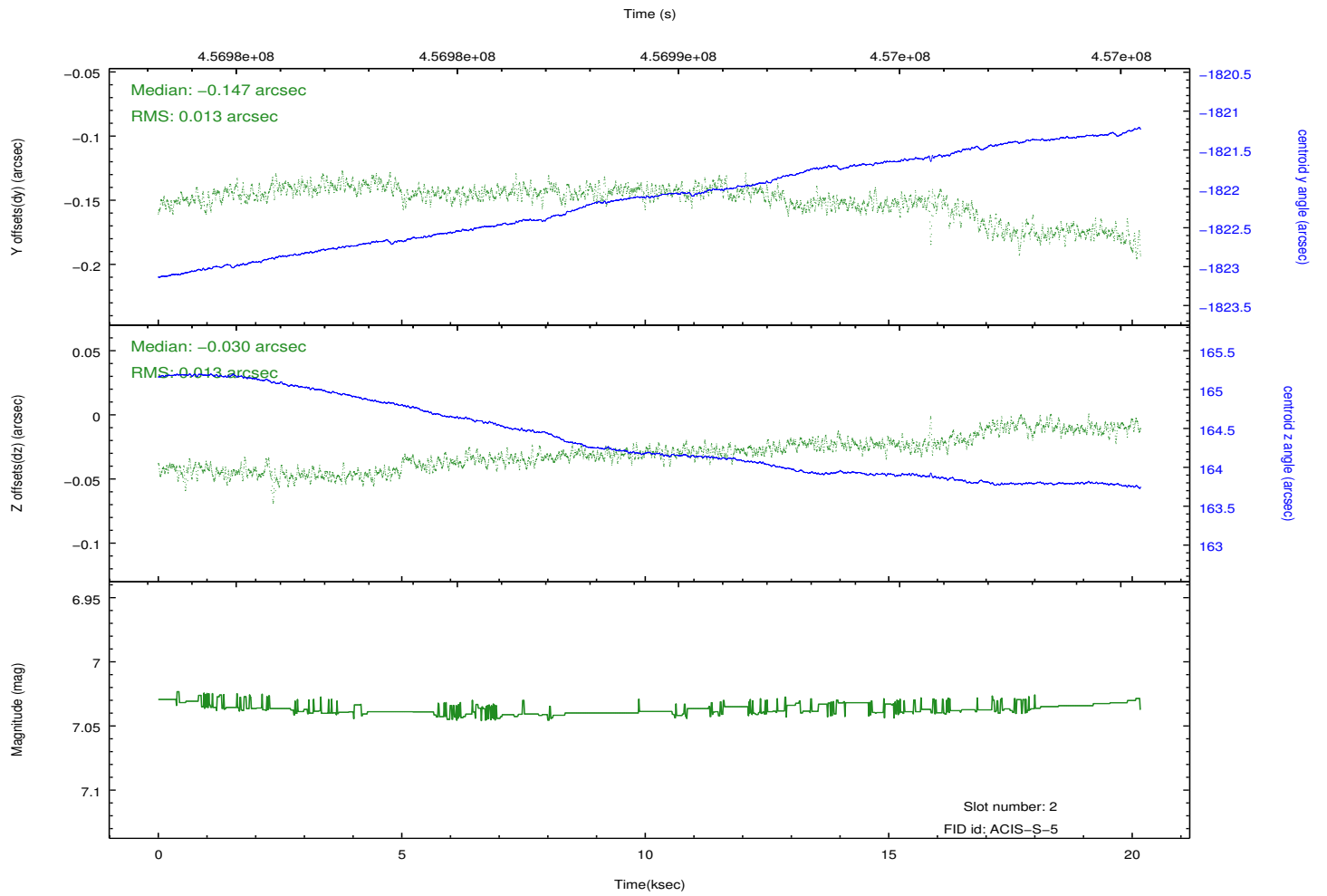
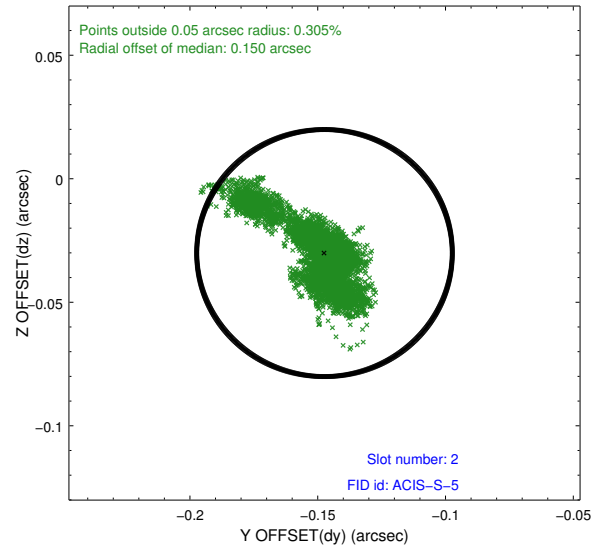
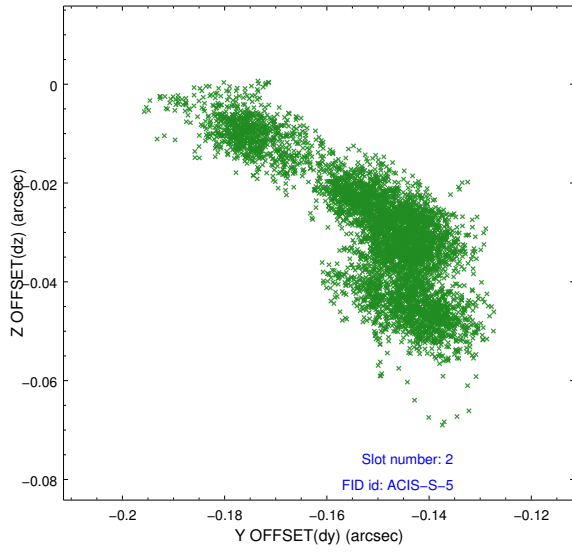
2.5.1 Slot 0



2.5.2 Slot 1



2.5.3 Slot 2



A Summary

A.1 Status

V&V Scientist	Jen Lauer
V&V Date (YYYY-MM-DD)	2012.06.25
V&V Edition	1
V&V Disposition and Status	OK
V&V Charge Time	20.069552027881

A.2 Comments

Monitor constraint met.