

V&V Reference Report

L2 ASCDS Version : 10.0.1

Observation 14603 - L2 Version 2
Chandra X-Ray Center

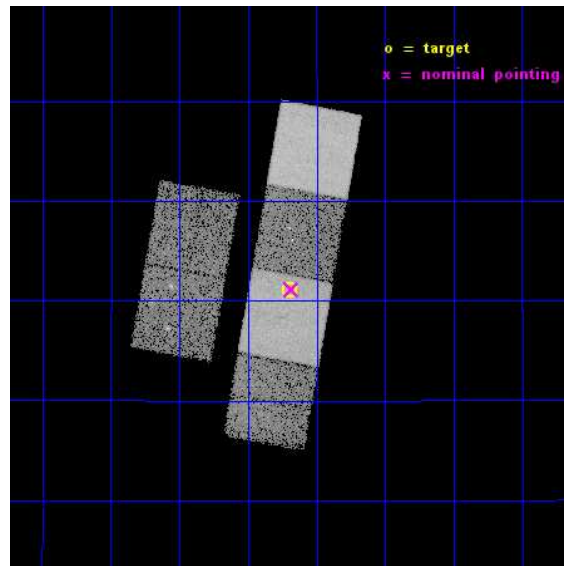
L2 Processing Date : Dec 6 2014

Contents

1	Front	2
2	OBI	3
2.1	OBI	3
2.1.1	Images	3
2.1.2	Bias	3
2.1.3	Parameters	4
2.1.4	Events	4
2.2	Compared Parameters	5
2.3	Aspect	6
2.4	Star Slots	9
2.4.1	Slot 3	9
2.4.2	Slot 4	10
2.4.3	Slot 5	11
2.4.4	Slot 6	12
2.4.5	Slot 7	13
2.5	FID Slots	14
2.5.1	Slot 0	14
2.5.2	Slot 1	15
2.5.3	Slot 2	16
A	Summary	17
A.1	Status	17
A.2	Comments	17

1 Front

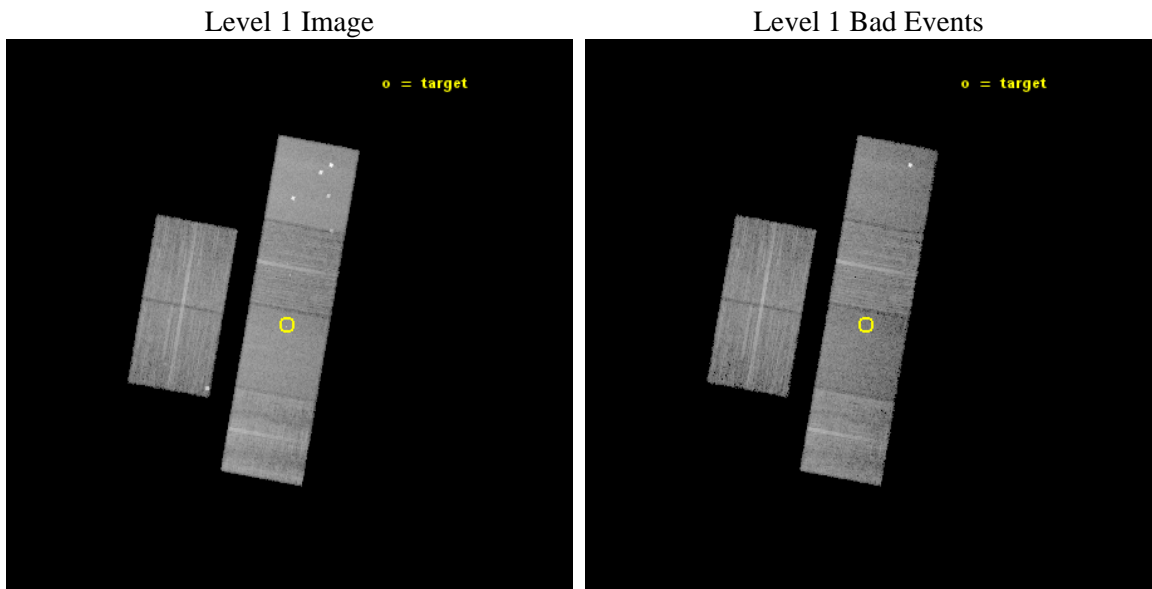
seq_num	200903	Sequence number
obs_id	14603	Observation id
title	Probing the Dynamo Mechanism in Fully Convective Stars	Proposal ti
observer	Dr Nicholas Wright	Principal investigator
object	GJ 3253	Source name
dtcycle	0	
cycle	P	events from which exps? Prim/Second/Both
ra_targ	58.17375	Observer's specified target RA [deg]
dec_targ	17.01825	Observer's specified target Dec [deg]
ra_nom	58.170823455754	Nominal RA [deg]
dec_nom	17.019399056809	Nominal Dec [deg]
roll_nom	100.18724390808	Nominal Roll [deg]
revision	2	Processing version of data
ontime	20966.399921954	Sum of GTIs [s]
livetime	20700.910741692	Livetime [s]
ontime2	20963.158891737	Sum of GTIs [s]
ontime3	20966.399921954	Sum of GTIs [s]
ontime5	20966.399921954	Sum of GTIs [s]
ontime6	20966.399921954	Sum of GTIs [s]
ontime7	20966.399921954	Sum of GTIs [s]
ontime8	20963.158891737	Sum of GTIs [s]
l2events	157464	Number of level 2 events



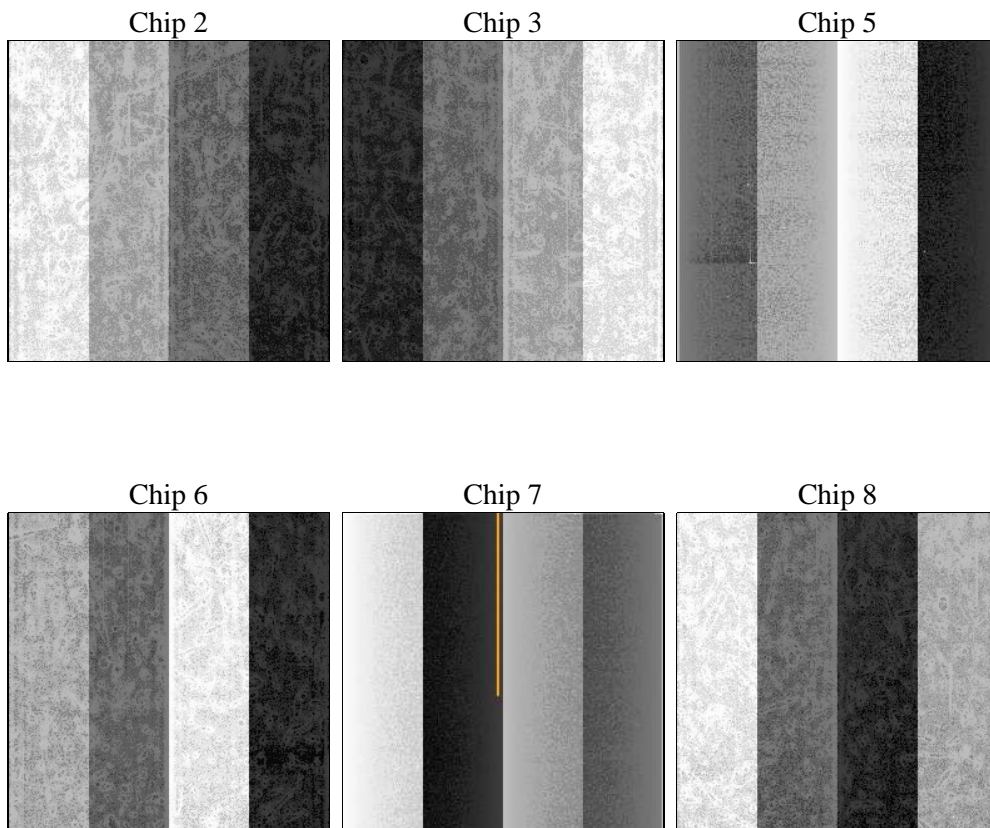
2 OBI

2.1 OBI

2.1.1 Images



2.1.2 Bias



2.1.3 Parameters

obi_num	0	Obi number	sched_exp_time	21000.000000	[s] Scheduled observation exposure time
ascdsver	10.3.1	Processing system revision	ontime	20966.399921954	Sum of GTIs [s]
caldbver	4.6.4	 	ontime2	20963.158891737	Sum of GTIs [s]
date	2014-12-06T22:42:18	Date and time of file creation	ontime3	20966.399921954	Sum of GTIs [s]
revision	2	Processing version of data	ontime5	20966.399921954	Sum of GTIs [s]
			ontime6	20966.399921954	Sum of GTIs [s]
			ontime7	20966.399921954	Sum of GTIs [s]
			ontime8	20963.158891737	Sum of GTIs [s]
			l1events	662510	Number of level 1 events

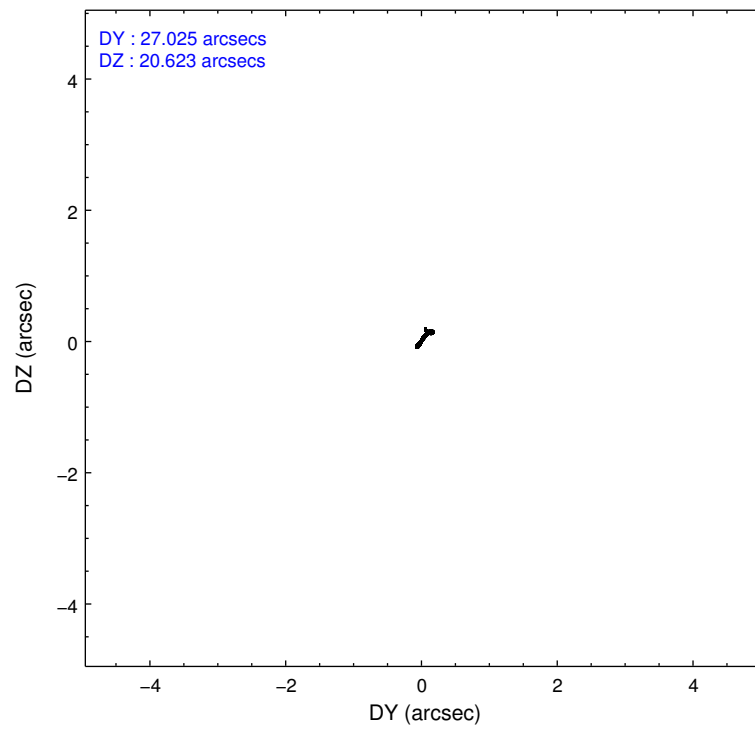
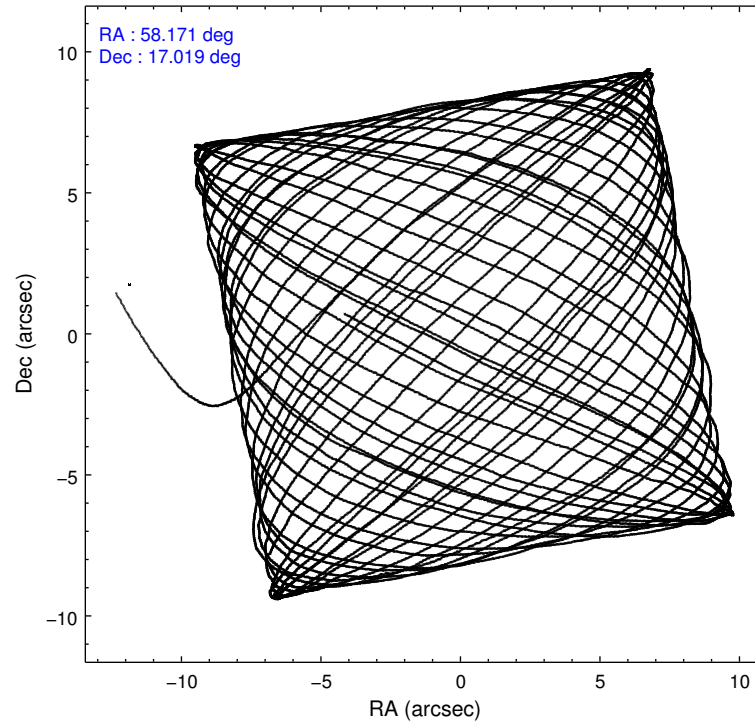
2.1.4 Events

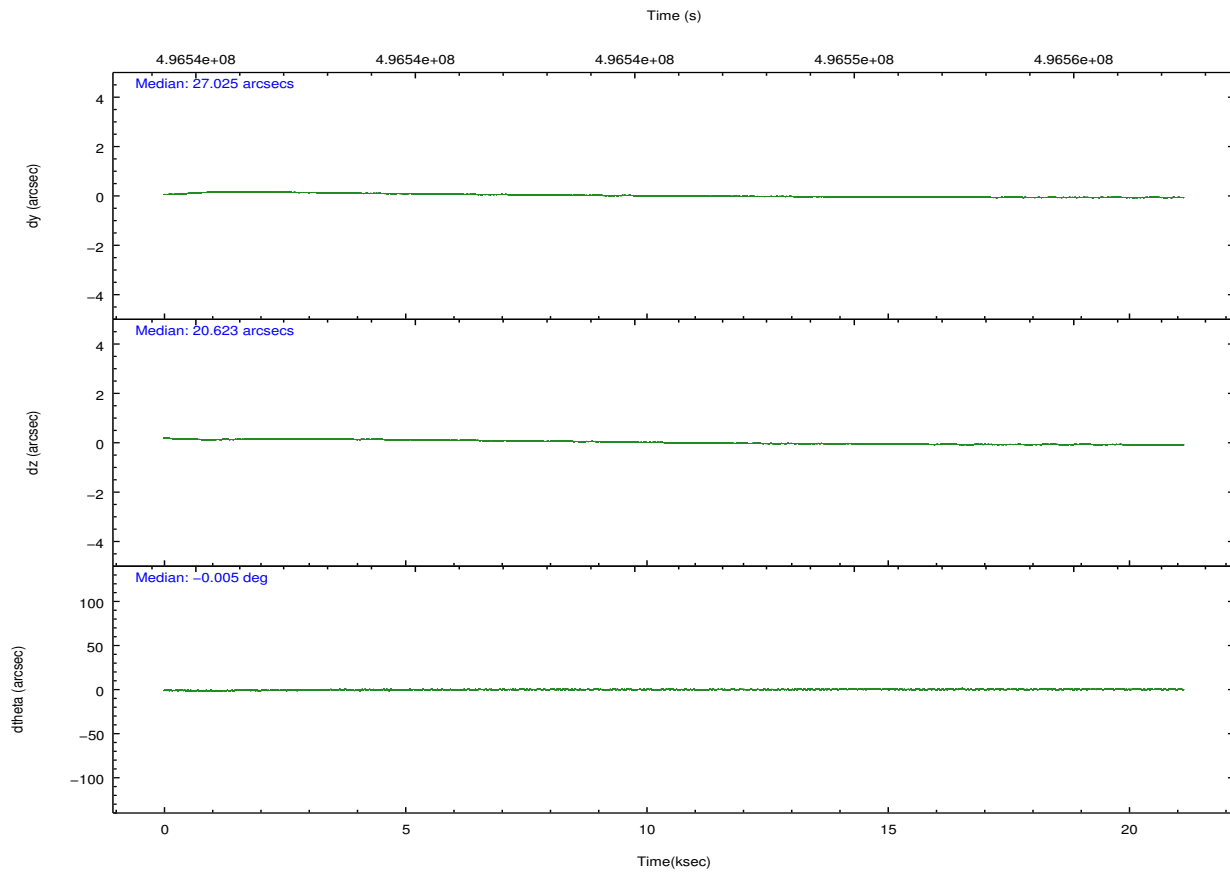
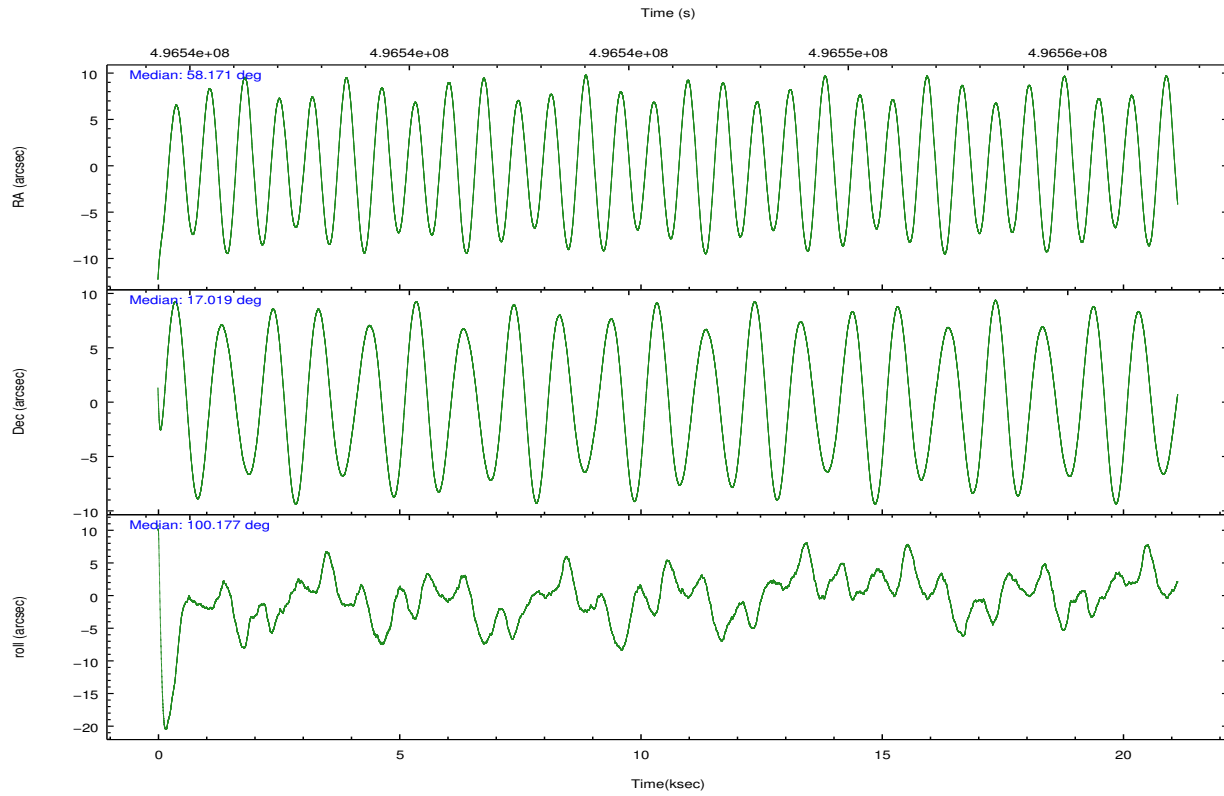
	ccd 2	ccd 3	ccd 5	ccd 6	ccd 7	ccd 8		ccd 2	ccd 3	ccd 5	ccd 6	ccd 7	ccd 8
level 1 events	95356	88318	156697	92850	109103	120186	grade 0 events	3871	5576	14273	4138	4978	9192
rejected events	84789	76271	74359	81292	57543	86612		4%	6%	9%	4%	4%	7%
rejected %	88%	86%	47%	87%	52%	72%	grade 1 events	60	59	276	48	144	86
								0%	0%	0%	0%	0%	0%
							grade 2 events	2648	2221	24356	2605	10923	7948
								2%	2%	15%	2%	10%	6%
							grade 3 events	1064	1112	2692	1157	4546	3587
								1%	1%	1%	1%	4%	2%
							grade 4 events	1021	1073	2531	1138	4602	3517
								1%	1%	1%	1%	4%	2%
							grade 5 events	3678	4326	11369	4217	11707	6430
								3%	4%	7%	4%	10%	5%
							grade 6 events	1966	2067	38515	2525	26520	9333
								2%	2%	24%	2%	24%	7%
							grade 7 events	81048	71884	62685	77022	45683	80093
								84%	81%	40%	82%	41%	66%

2.2 Compared Parameters

Parameter	Planned	Actual	Parameter	Planned	Actual
Instrument	ACIS	ACIS	Obspar format version number	7	7
Detector	ACIS-235678	ACIS-235678	Obspar file type	PREDICTED	ACTUAL
Grating	NONE	NONE	Obspar update status	NONE	UPDATED
Data mode	VFAINT	VFAINT	CCD I0 on	N	N
Observation mode	POINTING	POINTING	CCD I1 on	N	N
[deg] Pointing RA	58.189569	58.17082345575437	CCD I2 on	O1	Y
[deg] Pointing Dec	16.998755	17.01939905680934	CCD I3 on	O2	Y
[deg] Pointing Roll	100.025116	100.1872439080814	CCD S0 on	N	N
[mm] SIM focus pos	-0.684267	-0.6828225247311905	CCD S1 on	Y	Y
[mm] SIM defocus	0	0.001444936568705701	CCD S2 on	Y	Y
[mm] SIM translation stage pos	-190.132523	-190.145094680475	CCD S3 on	Y	Y
[mm] SIM translation stage offset	0	0.01257209746719923	CCD S4 on	Y	Y
[s] Observation start time (MET)	496535452.184000	496534176.63448	CCD S5 on	N	N
Observation start date	2013-09-25T22:29:45	2013-09-25T22:09:36	Number of optional ACIS chips dropped	0	0
[s] Observation end time (MET)	496556452.184000	496556834.26072	On-chip summing requested	N	N
Observation end date	2013-09-26T04:19:45	2013-09-26T04:27:14	Subarray requested	NONE	NONE
Read mode	TIMED	TIMED	Alternating exposures requested	N	N
			[s] Primary exposure time	0.000000	3.2

2.3 Aspect





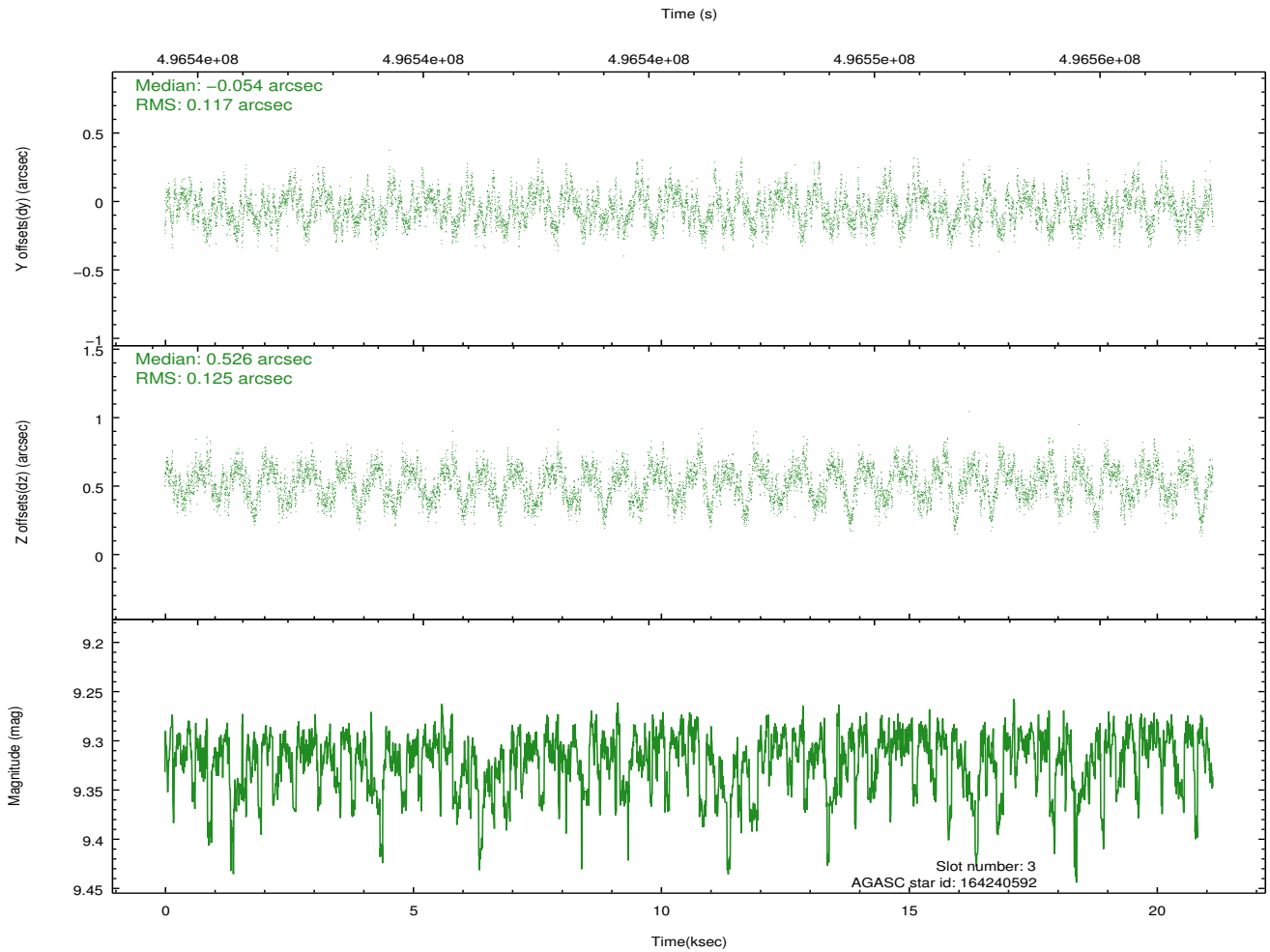
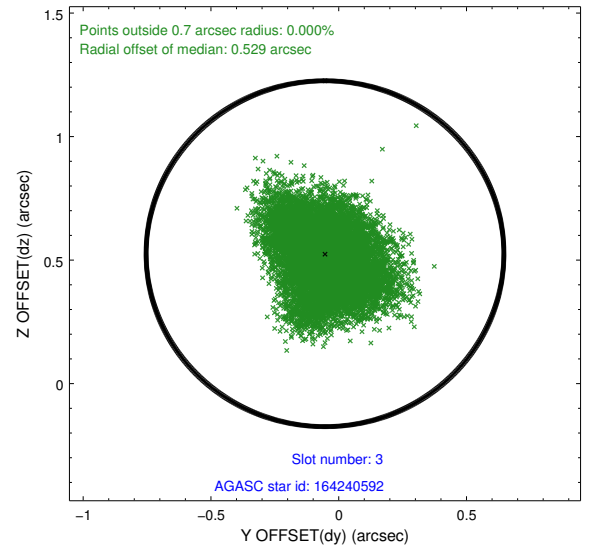
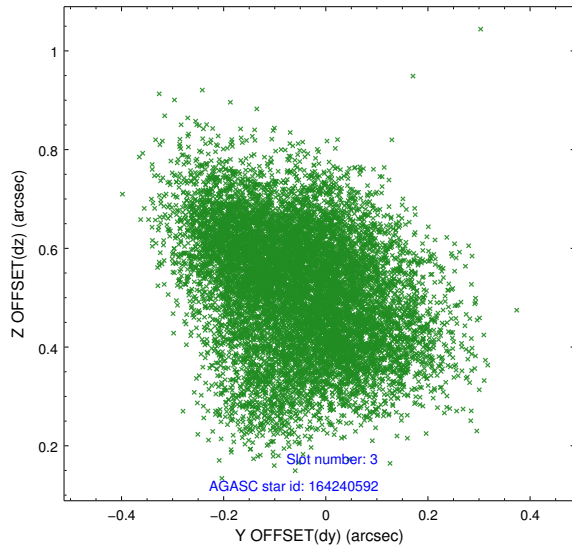
Slot Statistics

slot	status	used	id	mag	n_pts	med_dy	med_dz	dr1	dr2	ra	dec	mean_y	mean_z
0	FID		ACIS-S-2	6.98	5156	-0.192	-0.014	0.007	0.011	0.000000	0.000000	-780.50	-1742.10
1	FID		ACIS-S-4	7.07	5155	0.400	0.097	0.007	0.013	0.000000	0.000000	2133.25	166.36
2	FID		ACIS-S-5	7.10	5156	-0.239	-0.073	0.007	0.011	0.000000	0.000000	-1833.21	159.99
3	GUIDE	used	164240592	9.32	10255	-0.054	0.526	0.186	0.287	58.703011	17.607576	1854.69	-2116.13
4	GUIDE	used	164108304	9.07	10275	0.077	-0.211	0.096	0.157	57.484277	17.131820	897.57	2304.76
5	GUIDE	used	164108896	7.59	10309	-0.009	-0.226	0.089	0.133	57.595704	17.476364	2047.56	1707.56
6	GUIDE	used	164107680	8.60	10256	-0.001	0.063	0.112	0.166	57.952081	17.203049	866.98	675.95
7	GUIDE	used	164102512	8.87	10213	-0.019	-0.146	0.100	0.156	57.937495	17.164233	738.29	749.82

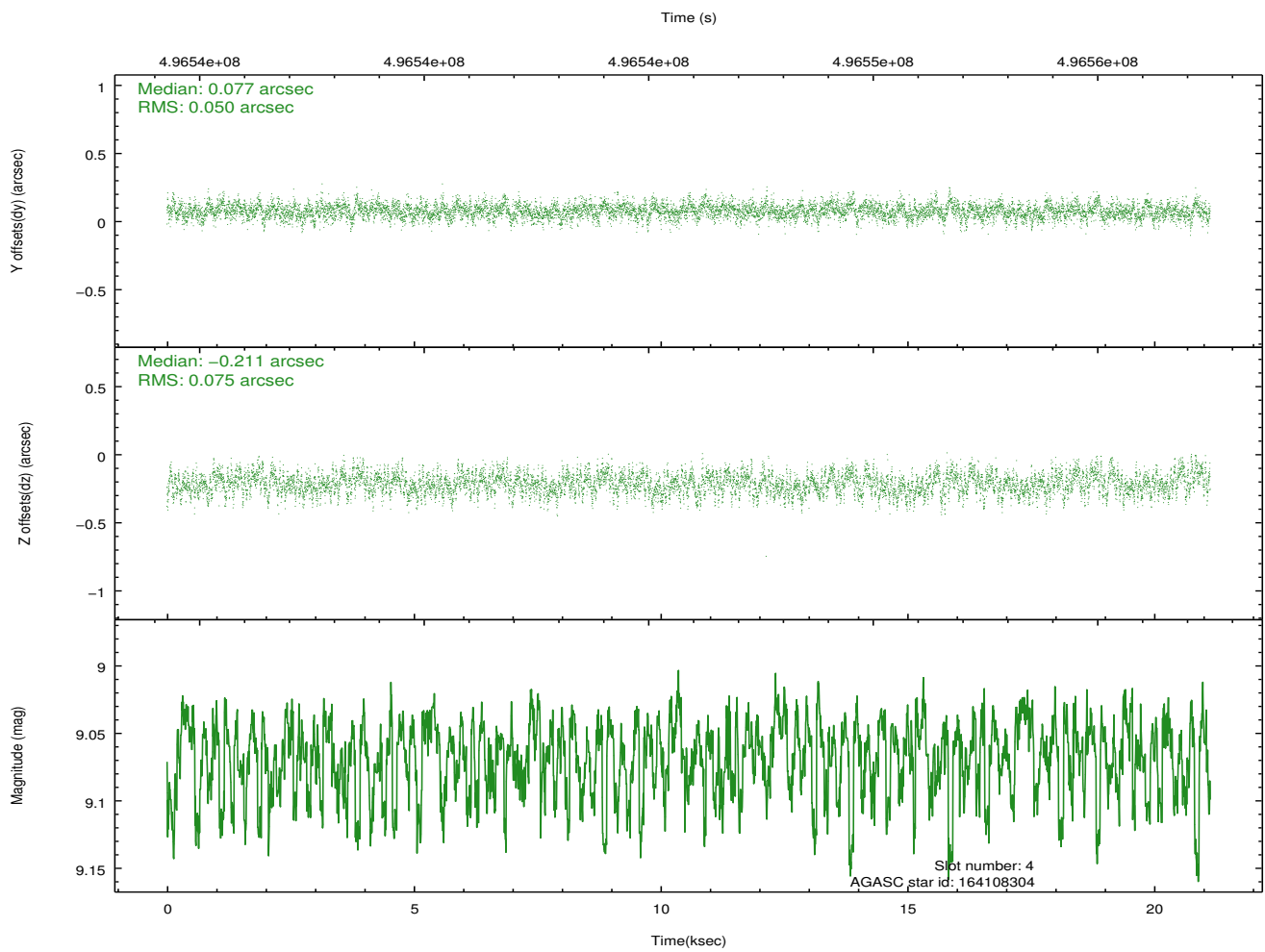
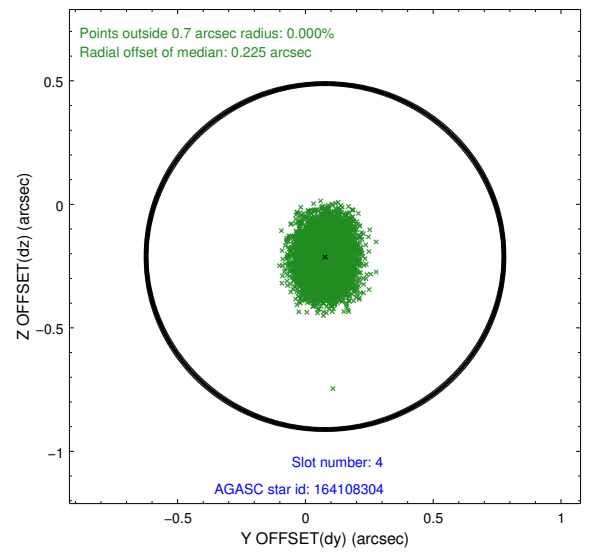
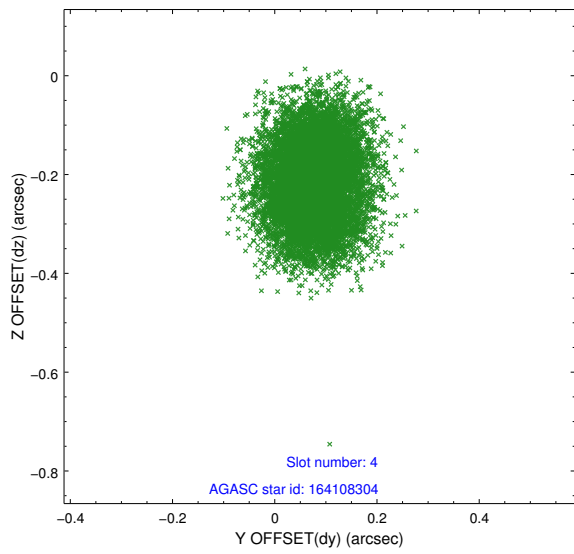
∞

2.4 Star Slots

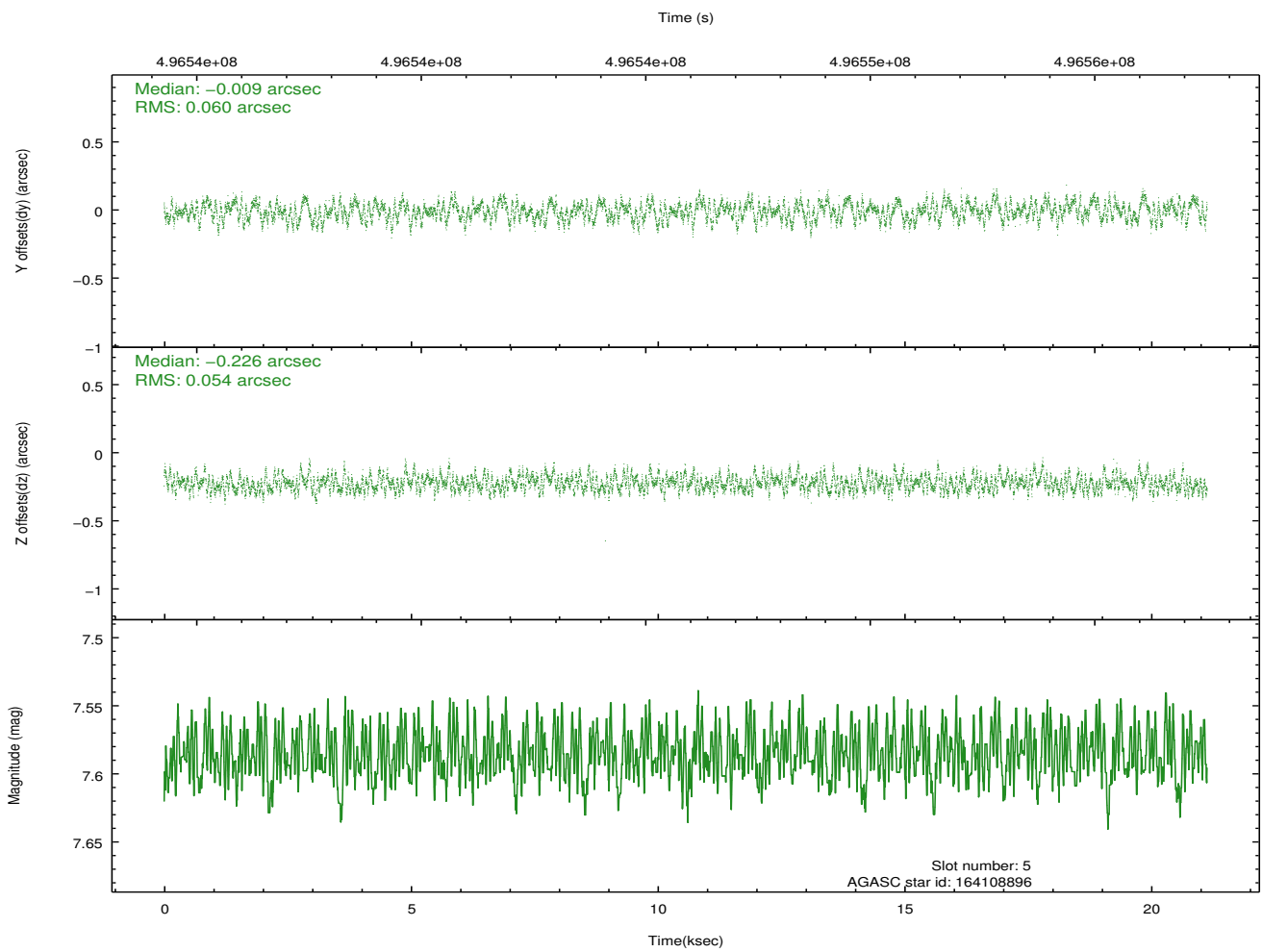
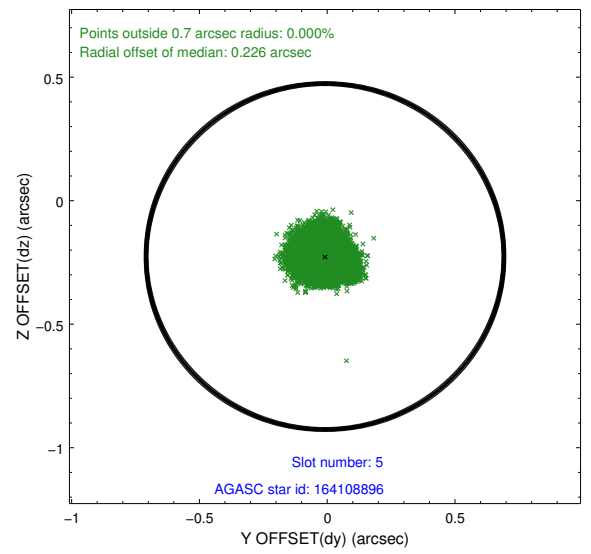
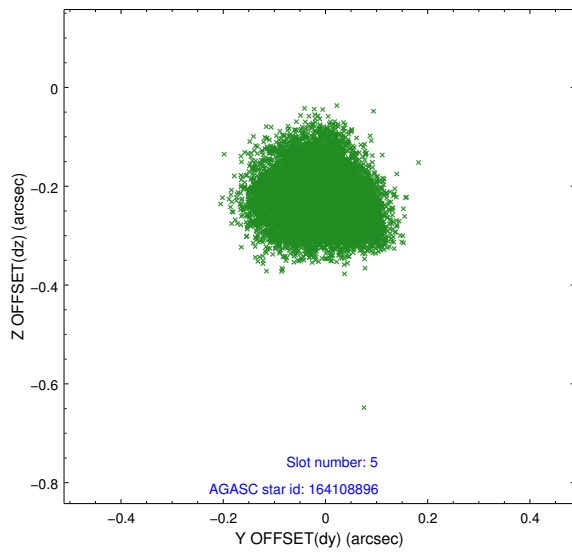
2.4.1 Slot 3



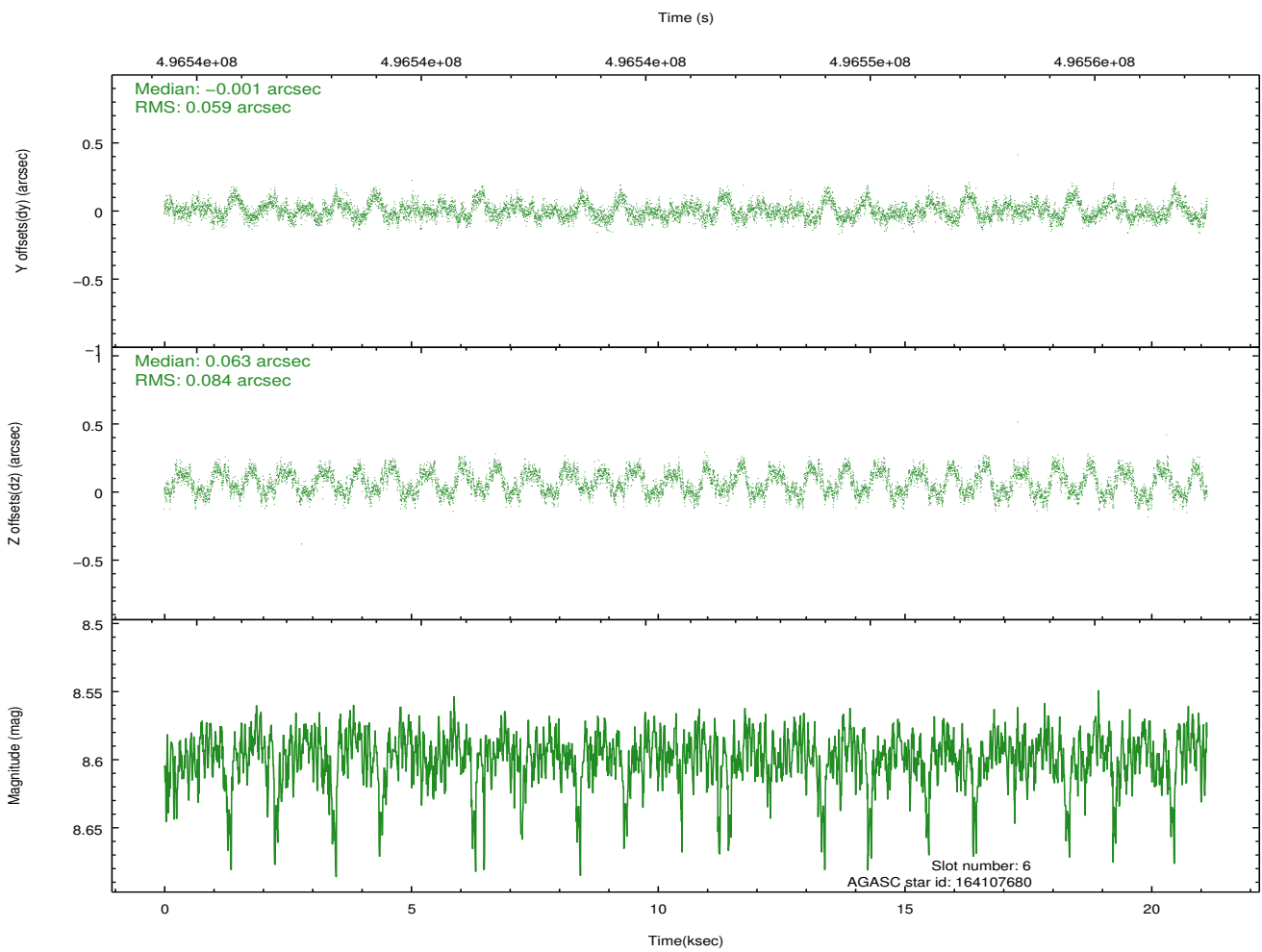
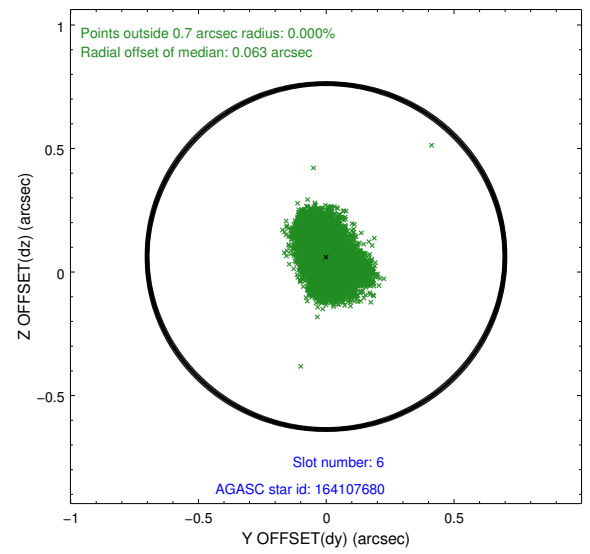
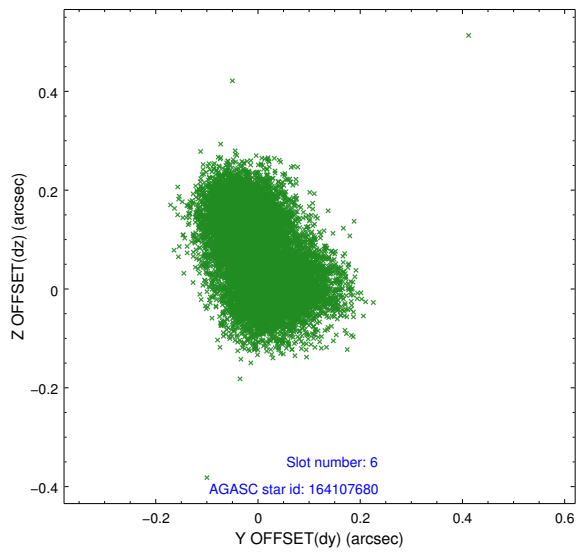
2.4.2 Slot 4



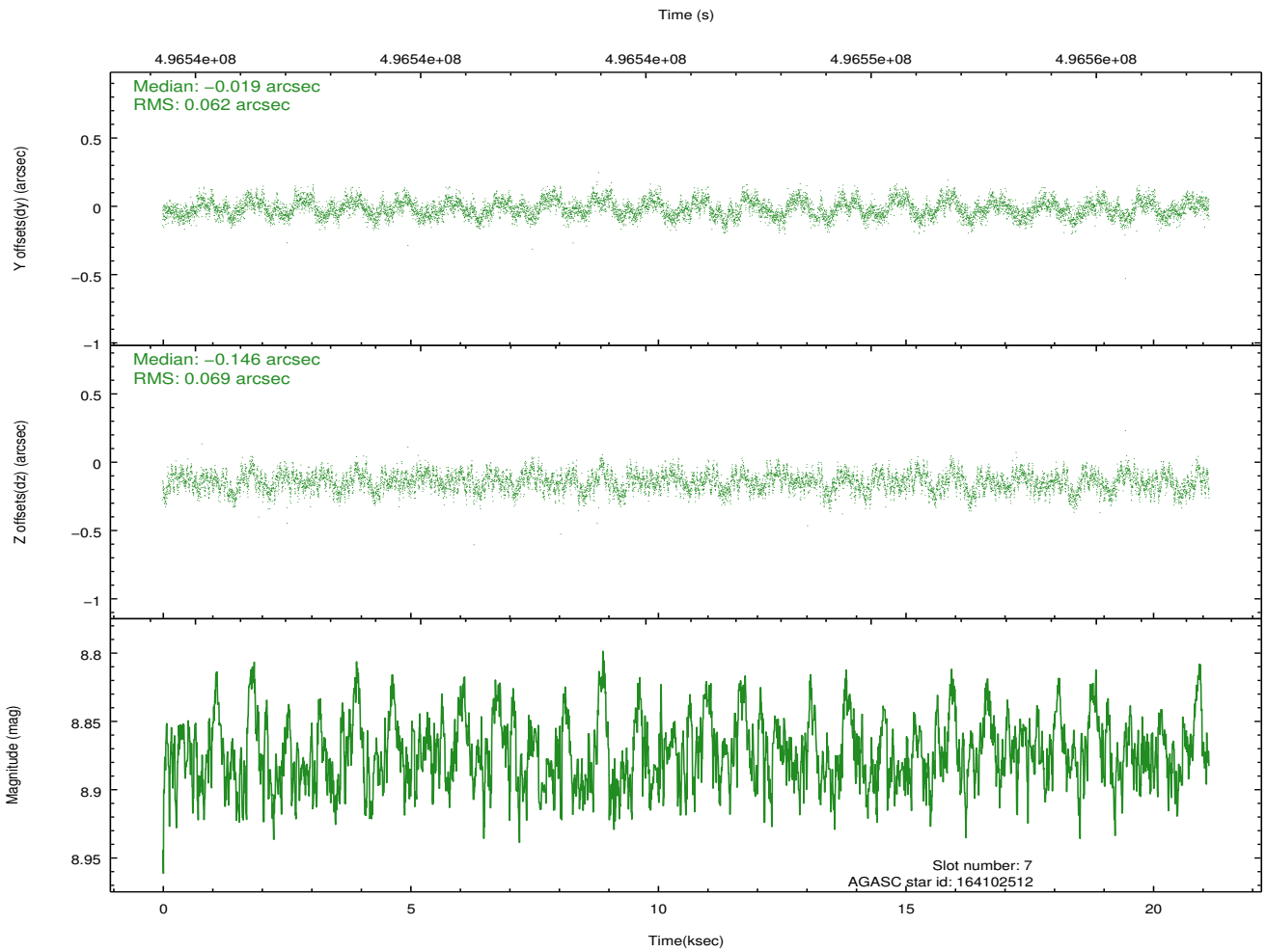
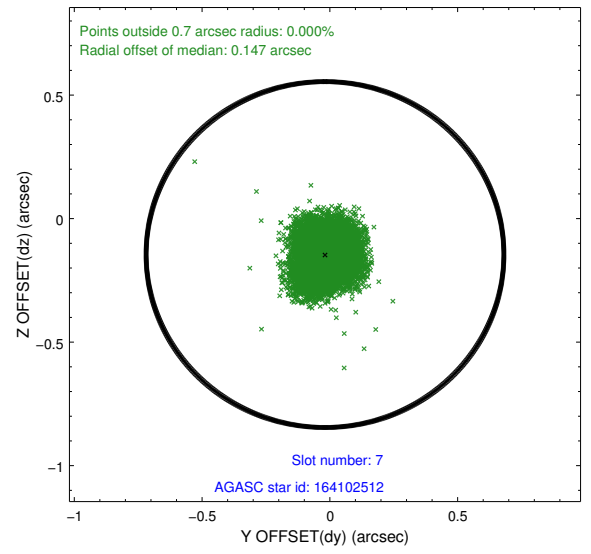
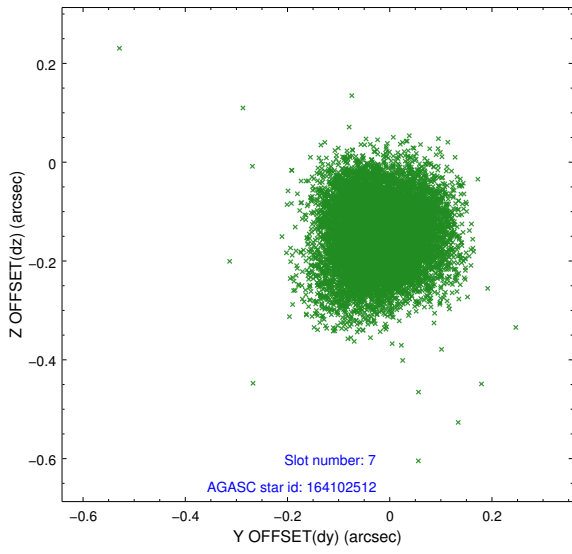
2.4.3 Slot 5



2.4.4 Slot 6

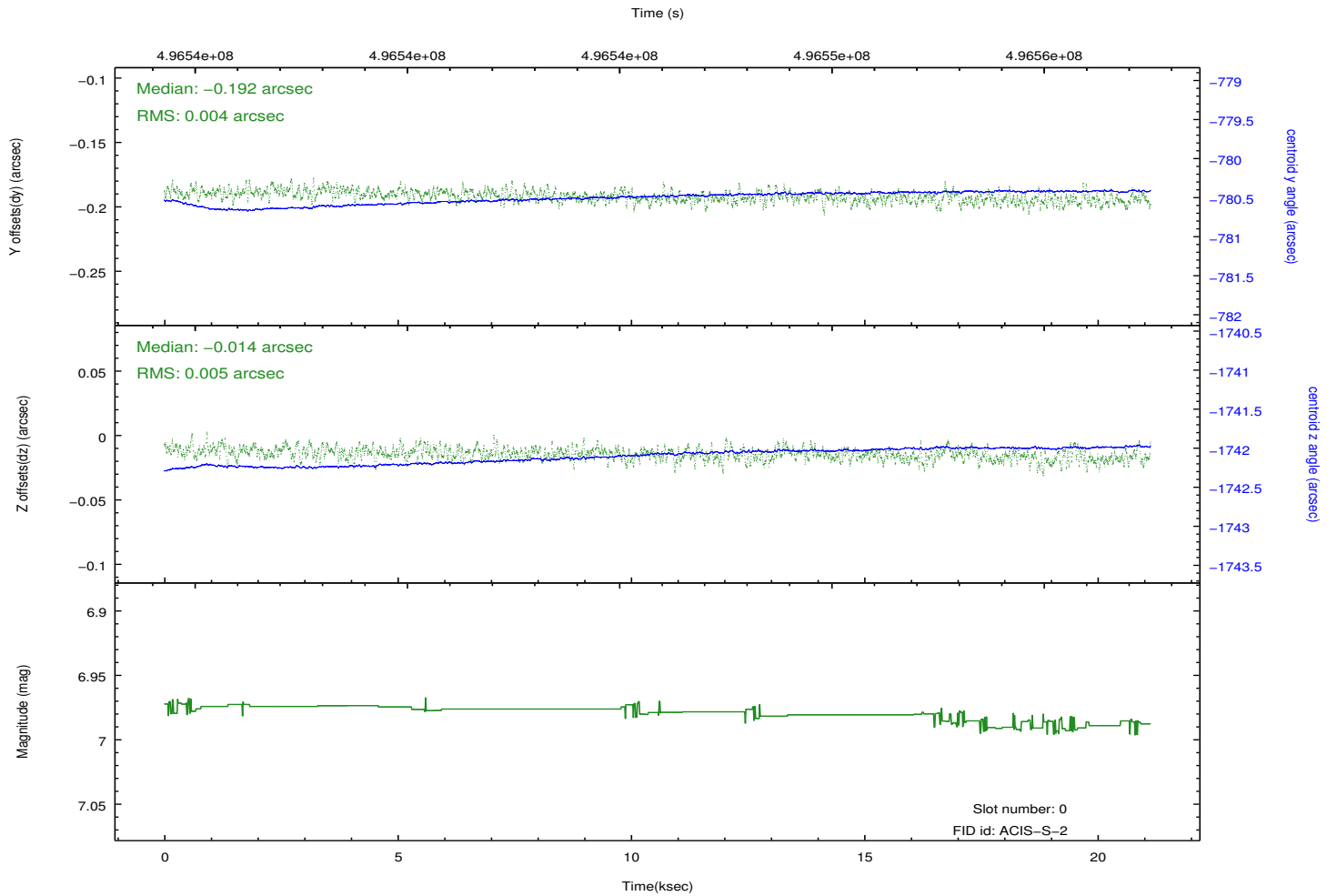
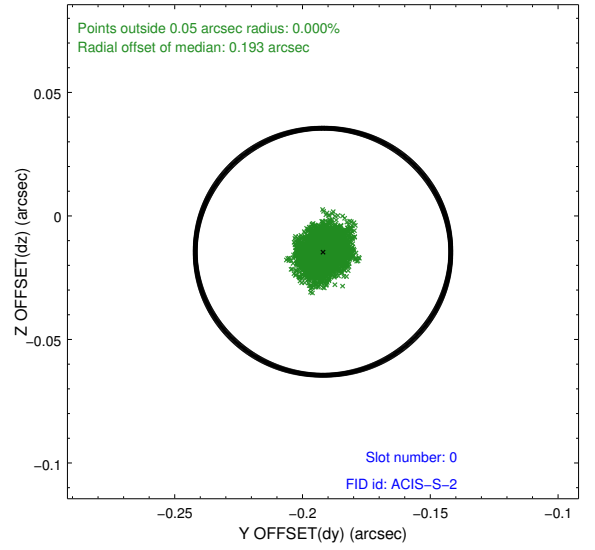
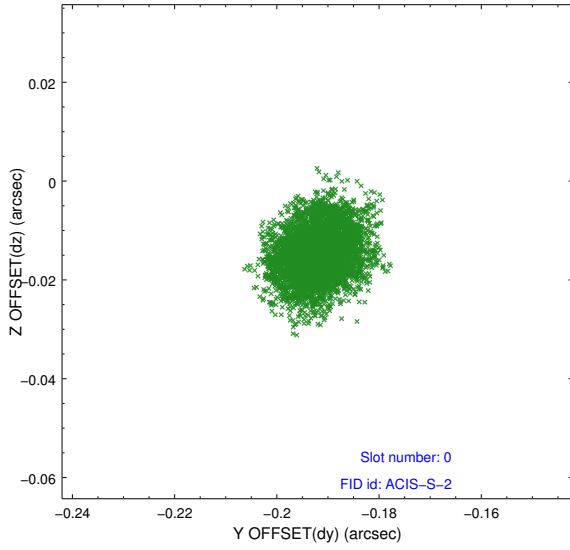


2.4.5 Slot 7

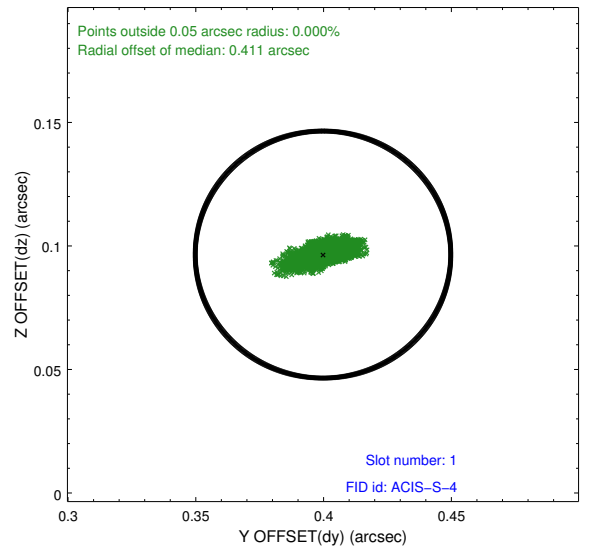
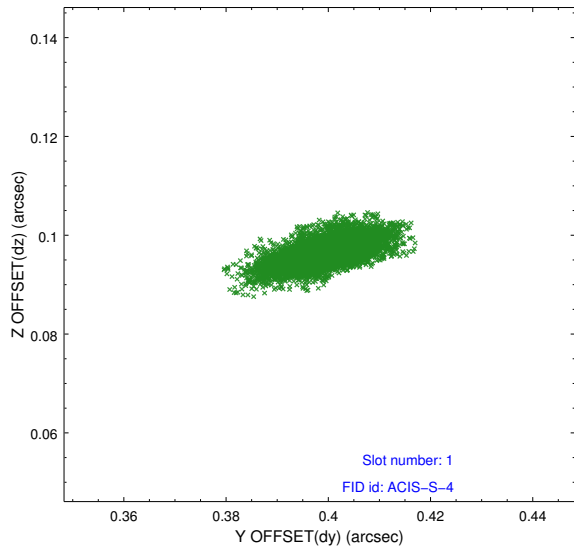


2.5 FID Slots

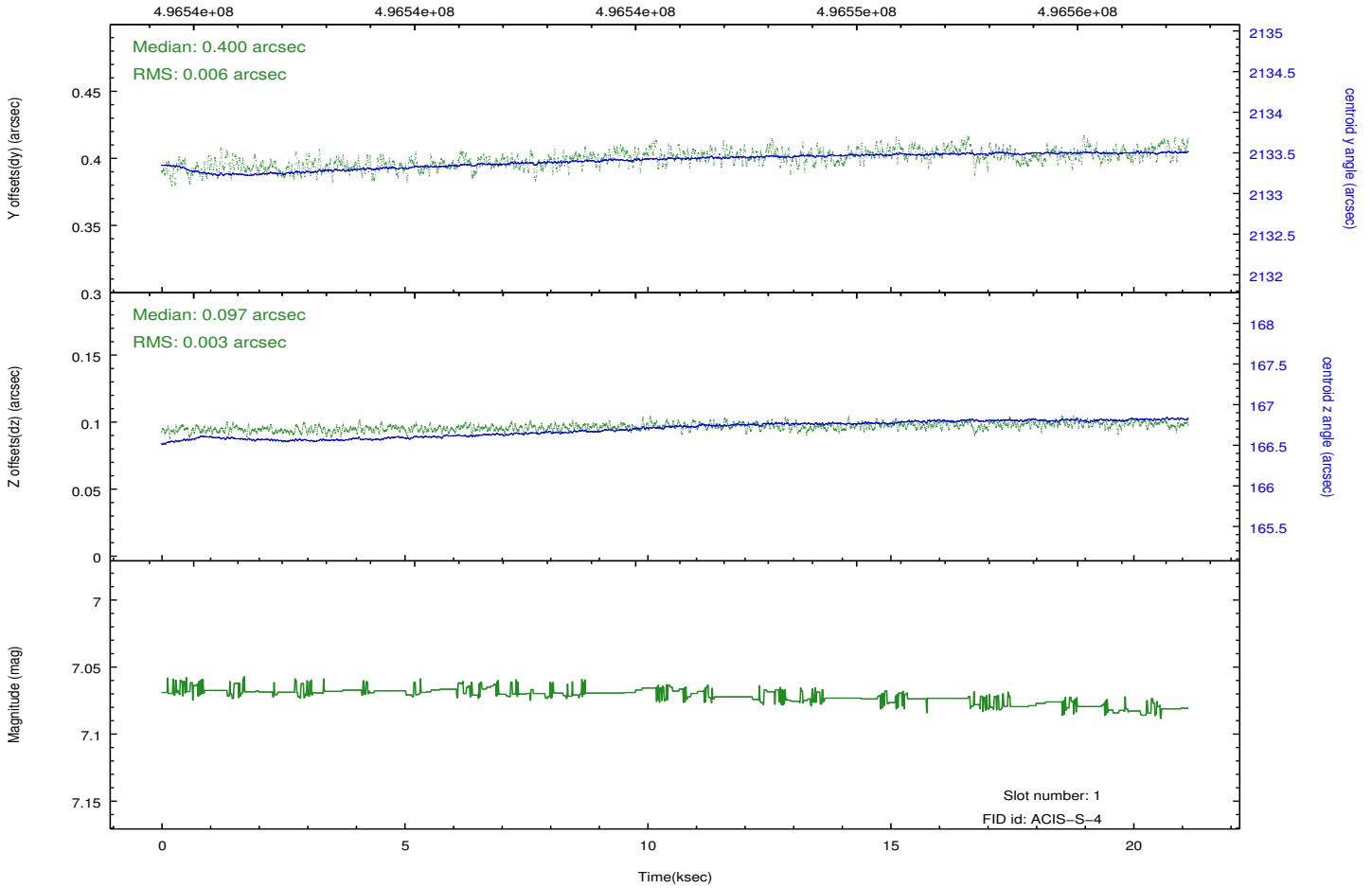
2.5.1 Slot 0



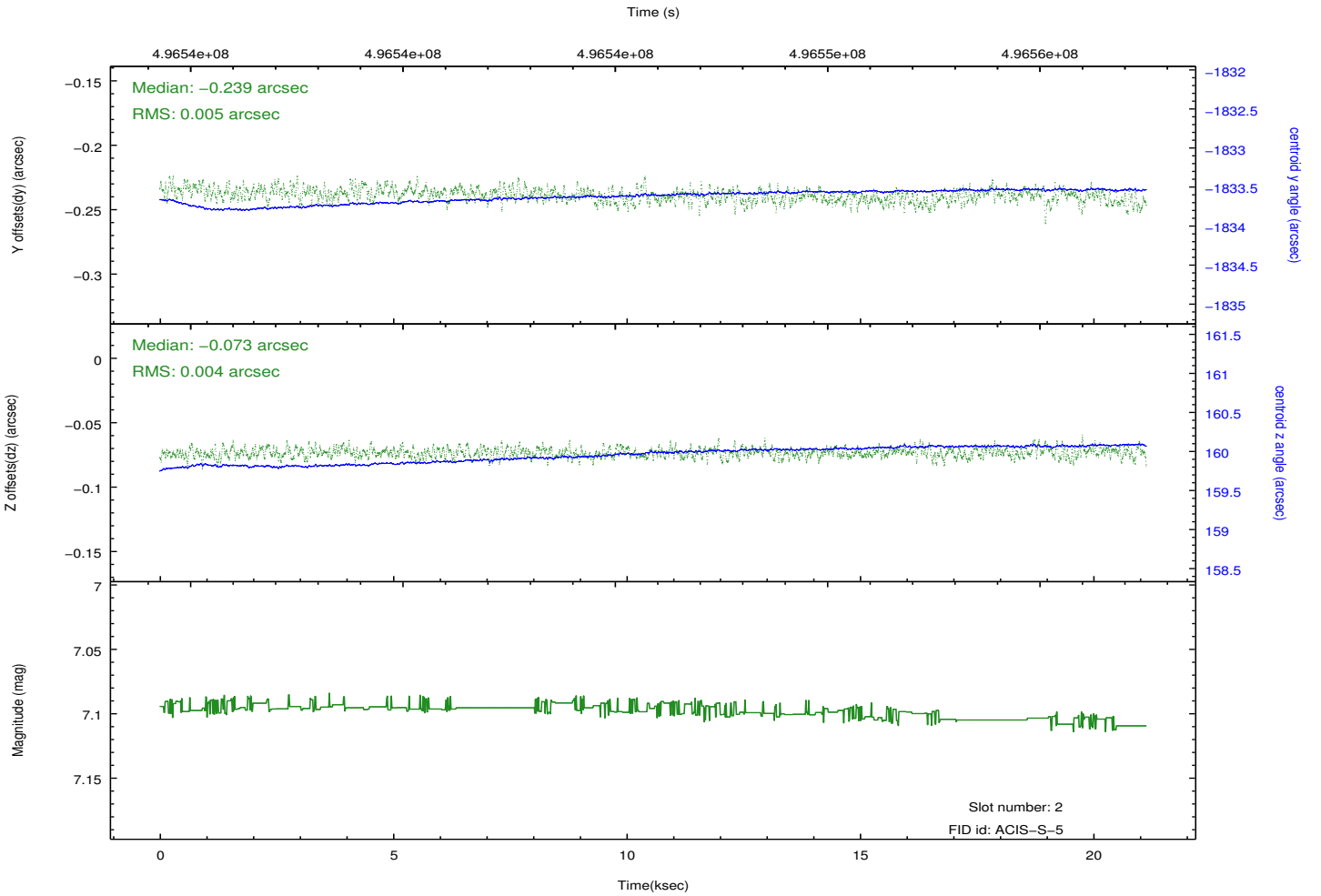
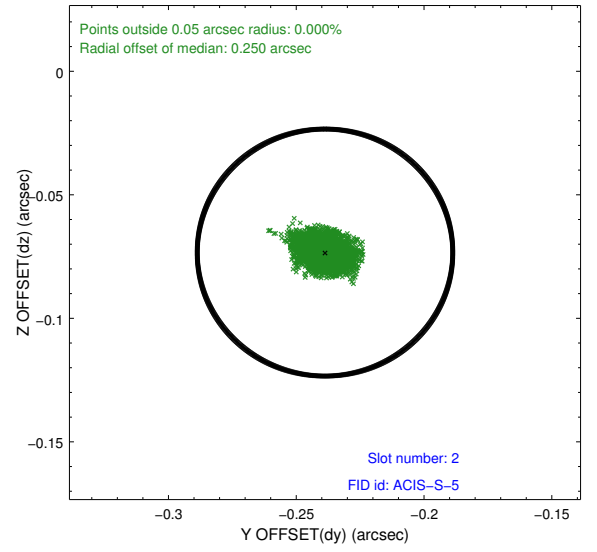
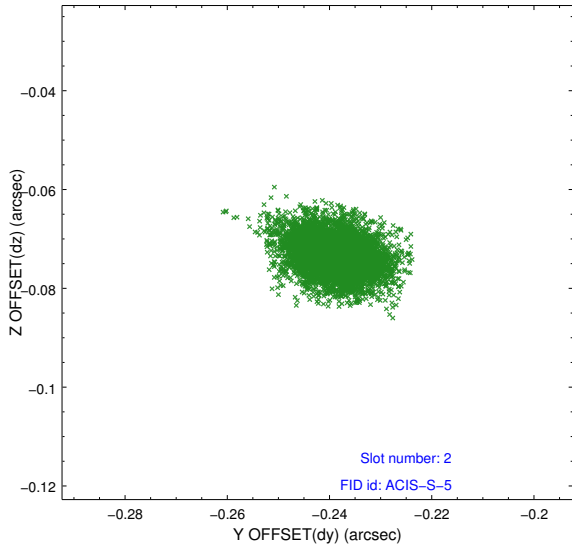
2.5.2 Slot 1



Time (s)



2.5.3 Slot 2



A Summary

A.1 Status

V&V Scientist	Beth Sundheim
V&V Date (YYYY-MM-DD)	2014.12.12
V&V Edition	1
V&V Disposition and Status	OK
V&V Charge Time	20.966399921954

A.2 Comments

These data have been reprocessed with new aspect alignment calibration files that correct small mean offsets (up to 0.4 arcsecs) and improve overall astrometric accuracy. The new calibration was determined using data from the time period being reprocessed and was performed using cross-correlation of X-ray sources with radio and optical counterparts.