

# V&V Reference Report

## L2 ASCDS Version : 10

Observation 15293 - L2 Version 2  
Chandra X-Ray Center

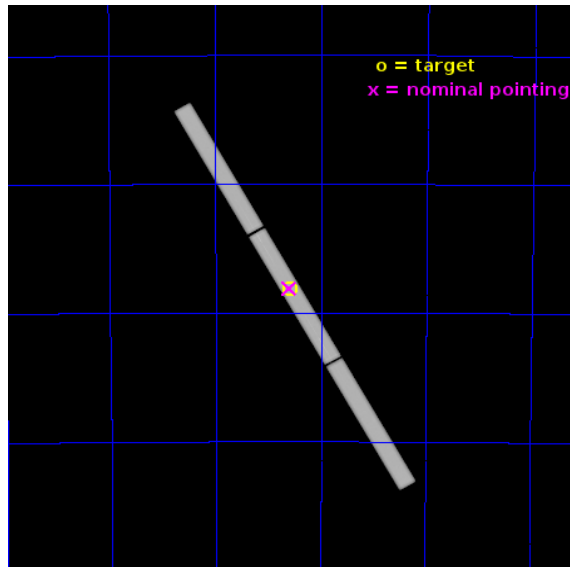
L2 Processing Date : Jun 18 2013

## Contents

<b>1</b>	<b>Front</b>	<b>2</b>
<b>2</b>	<b>OBI</b>	<b>3</b>
2.1	OBI . . . . .	3
2.1.1	Images . . . . .	3
2.1.2	Parameters . . . . .	4
2.1.3	Events . . . . .	4
2.2	Compared Parameters . . . . .	5
2.3	Aspect . . . . .	6
2.4	Star Slots . . . . .	9
2.4.1	Slot 3 . . . . .	9
2.4.2	Slot 4 . . . . .	10
2.4.3	Slot 5 . . . . .	11
2.4.4	Slot 6 . . . . .	12
2.4.5	Slot 7 . . . . .	13
2.5	FID Slots . . . . .	14
2.5.1	Slot 0 . . . . .	14
2.5.2	Slot 1 . . . . .	15
<b>3</b>	<b>Gratings</b>	<b>16</b>
3.1	LETG Arm . . . . .	16
<b>A</b>	<b>Summary</b>	<b>18</b>
A.1	Status . . . . .	18
A.2	Comments . . . . .	18

# 1 Front

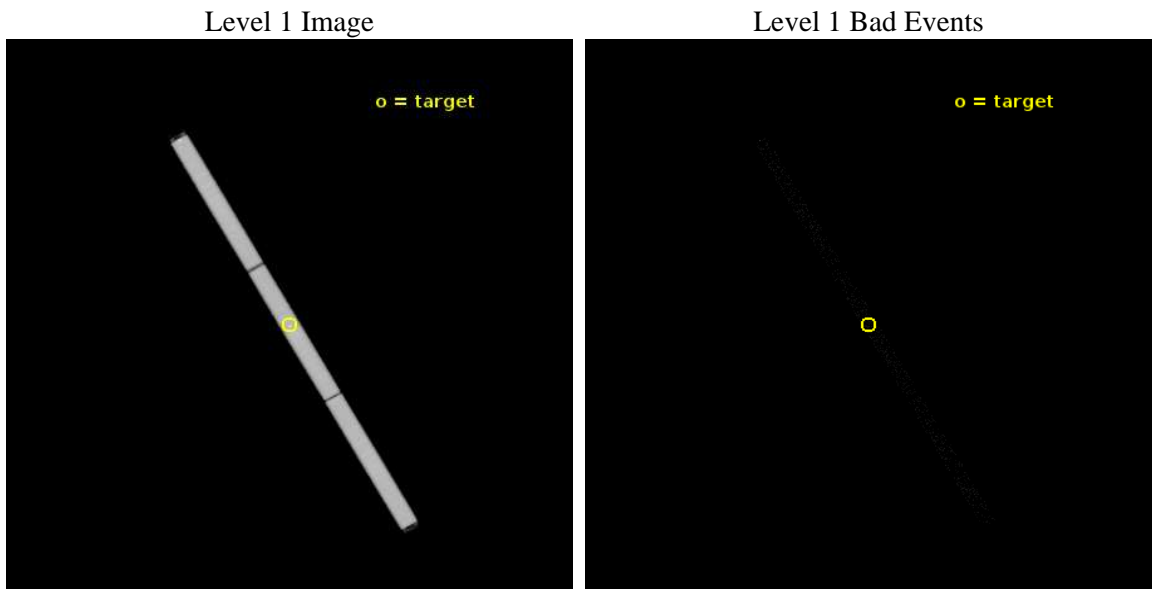
seq_num	502023	Sequence number
obs_id	15293	Observation id
title	Revisiting the Isolated Neutron Star RX J1856.5-3754	Proposal titl
observer	Dr. Peter Predehl	Principal investigator
object	RX J1856.5-3754	Source name
ra_targ	284.147083	Observer's specified target RA [deg]
dec_targ	-37.909556	Observer's specified target Dec [deg]
ra_nom	284.15014244449	Nominal RA [deg]
dec_nom	-37.905466818648	Nominal Dec [deg]
roll_nom	60.069217636087	Nominal Roll [deg]
revision	2	Processing version of data
ontime	91826.936237216	[s]
livetime	91225.401402794	Ontime multiplied by DTCOR
l2events	4929887	Number of level 2 events



## 2 OBI

### 2.1 OBI

#### 2.1.1 Images



### 2.1.2 Parameters

obi_num	0	Obi number	sched_exp_time	91704.000000	[s] Scheduled observation exposure time
ascdsver	10	Processing system revision	ontime	91826.936237216	[s]
caldsver	4.5.6	&#160	l1events	6731446	Number of level 1 events
date	2013-06-18T16:59:11	Date and time of file creation			
revision	2	Processing version of data			

### 2.1.3 Events

#### Level 1 Events

	<b>segment 1</b>	<b>segment 2</b>	<b>segment 3</b>
level 1 events	2243378	2231921	2256147
rejected events	29632	28463	29030
rejected %	1%	1%	1%

## 2.2 Compared Parameters

Parameter	Planned	Actual	Parameter	Planned	Actual
Instrument	HRC	HRC	Obspar format version number	7	7
Detector	HRC-S	HRC-S	Obspar file type	PREDICTED	ACTUAL
Grating	LETG	LETG	Obspar update status	NONE	UPDATED
Data mode	OBSERVING	OBSERVING			
Observation mode	POINTING	POINTING			
[deg] Pointing RA	284.152035	284.1501424444895			
[deg] Pointing Dec	-37.934137	-37.90546681864768			
[deg] Pointing Roll	60.003044	60.06921763608683			
[mm] SIM focus pos	-1.429586	-1.428180813131781			
[mm] SIM defocus	0.1037507710433287	0.1051558262725154			
[mm] SIM translation stage pos	250.455976	250.466033080201			
[mm] SIM translation stage offset	0	-0.01005468664627074			
[s] Observation start time (MET)	487435777.184000	487434589.5013			
Observation start date	2013-06-12T14:48:30	2013-06-12T14:29:49			
[s] Observation end time (MET)	487527481.184000	487528031.06887			
Observation end date	2013-06-13T16:16:54	2013-06-13T16:27:11			

## 2.3 Aspect

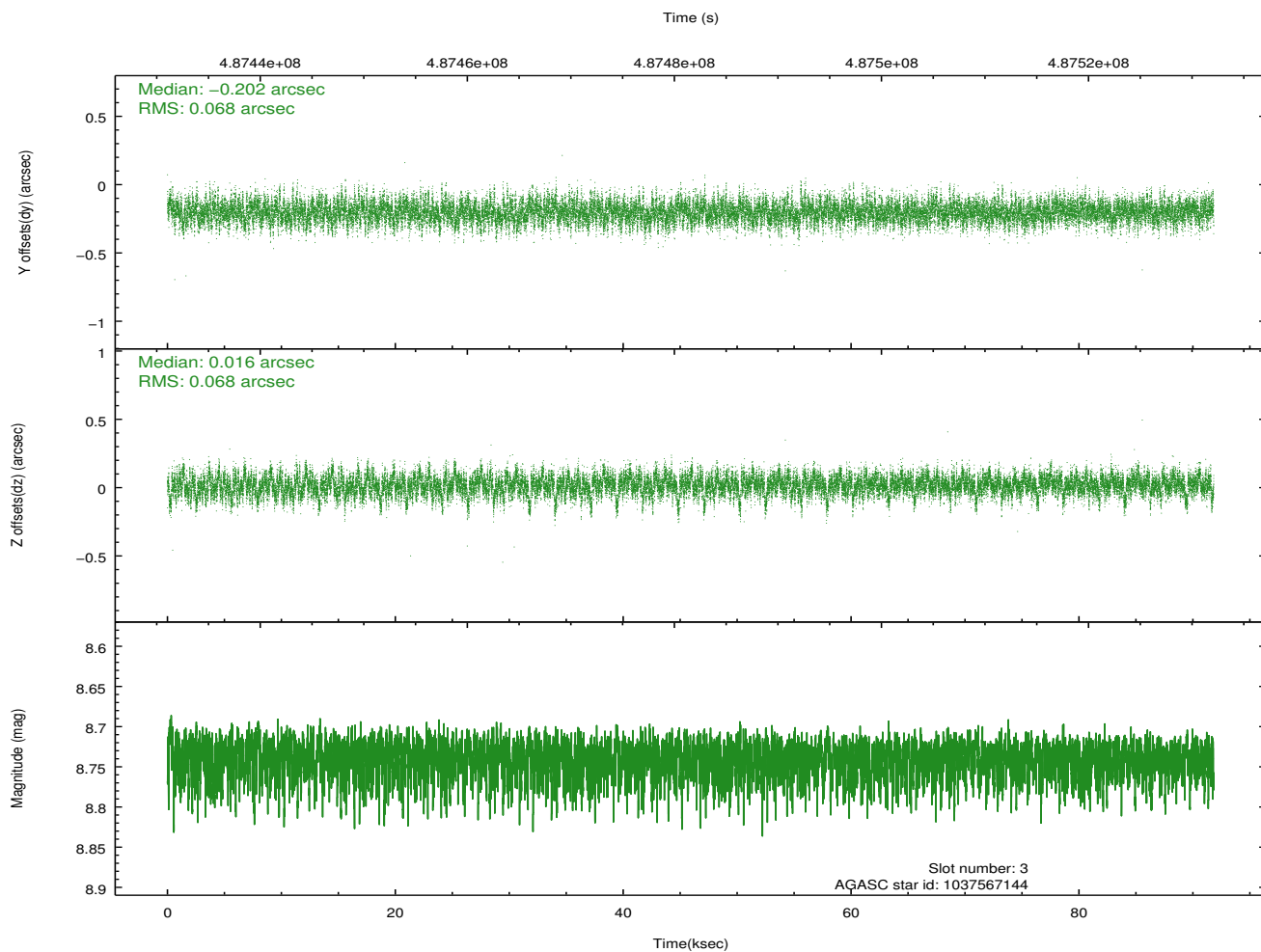
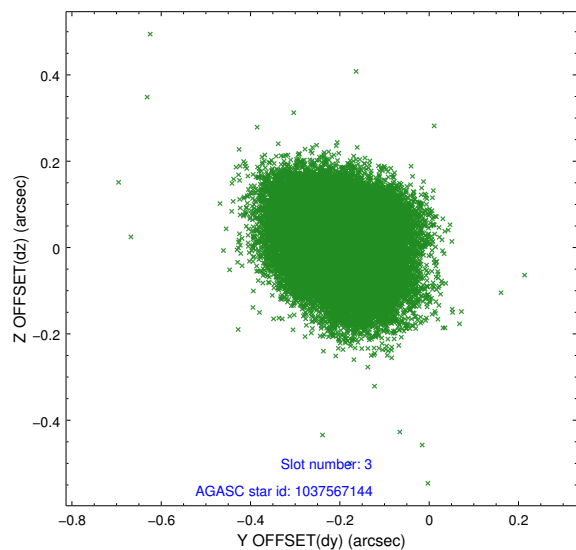


### Slot Statistics

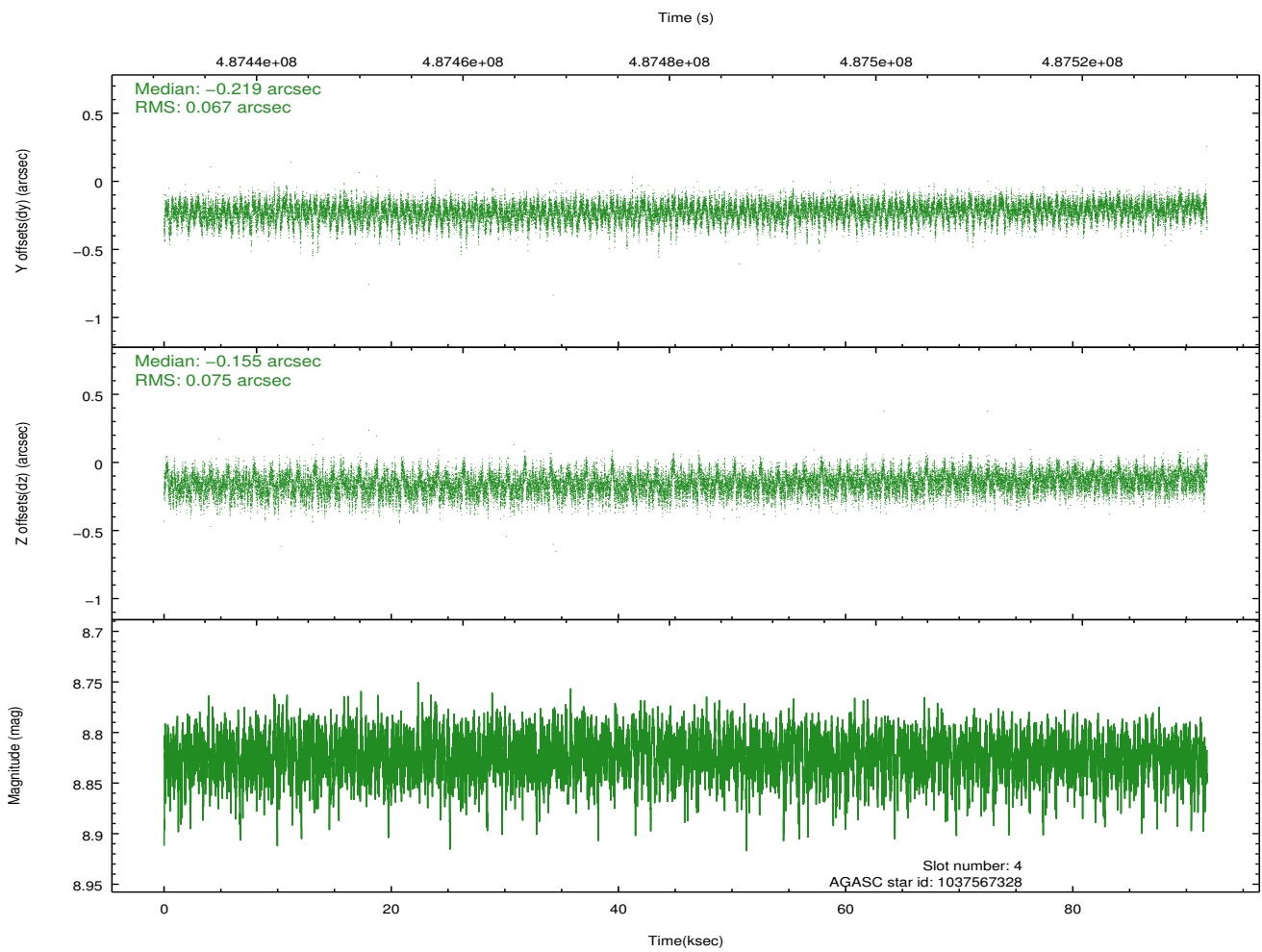
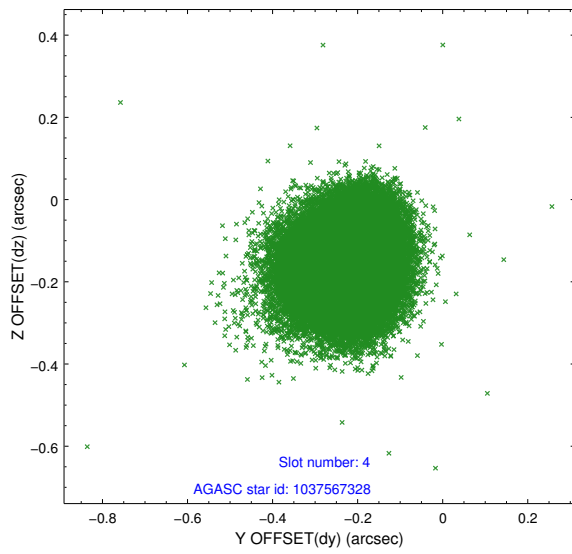
slot	status	id	mag	n_pts	med_dy	med_dz	dr1	dr2	ra	dec	mean_y	mean_z
0	FID	HRC-S-1	7.06	22397	0.010	-0.104	0.022	0.035	0.000000	0.000000	-1174.13	-464.16
1	FID	HRC-S-2	7.04	22396	0.254	-0.102	0.022	0.035	0.000000	0.000000	1225.74	-456.74
2	OMITTED		0.00	0	0.000	0.000	0.000	0.000	0.000000	0.000000	0.00	0.00
3	GUIDE	1037567144	8.74	44766	-0.202	0.016	0.101	0.170	284.940440	-37.605390	2141.34	-1360.04
4	GUIDE	1037567328	8.82	44593	-0.219	-0.155	0.107	0.173	284.052016	-37.647288	751.80	763.11
5	GUIDE	1037576824	8.73	44778	0.111	0.242	0.088	0.139	284.177029	-38.323536	-1178.14	-761.81
6	GUIDE	1037578168	8.11	44779	0.261	0.030	0.081	0.132	284.493659	-38.169059	-252.23	-1262.01
7	GUIDE	1037567312	8.46	44773	0.052	-0.135	0.079	0.129	283.456056	-37.976515	-1125.72	1630.28

## 2.4 Star Slots

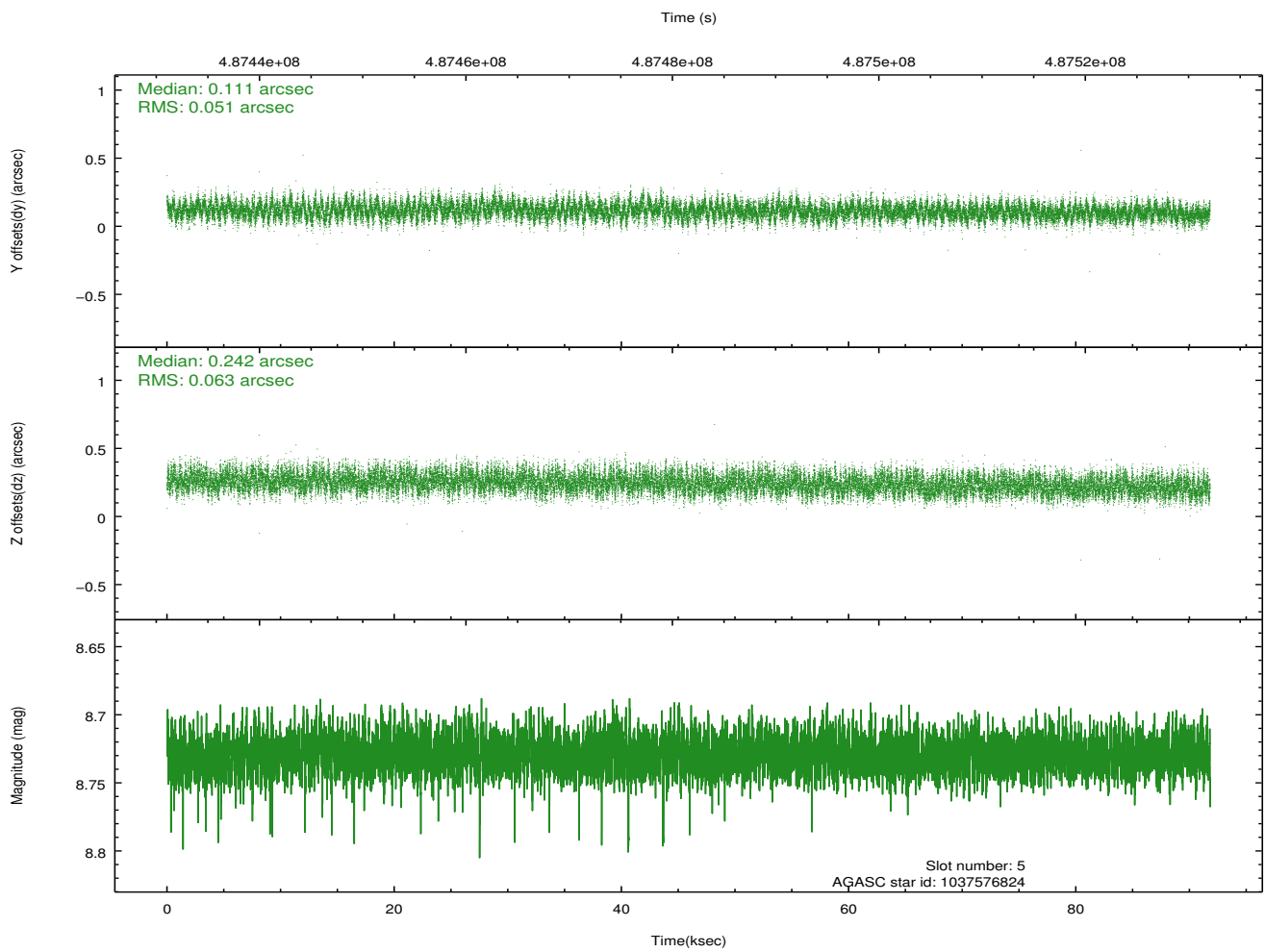
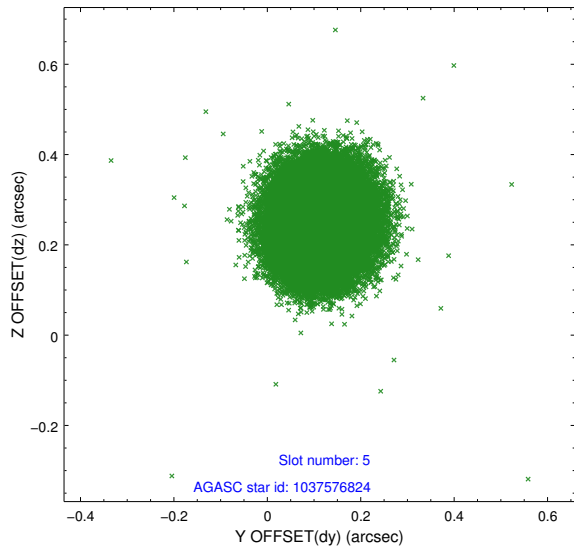
### 2.4.1 Slot 3



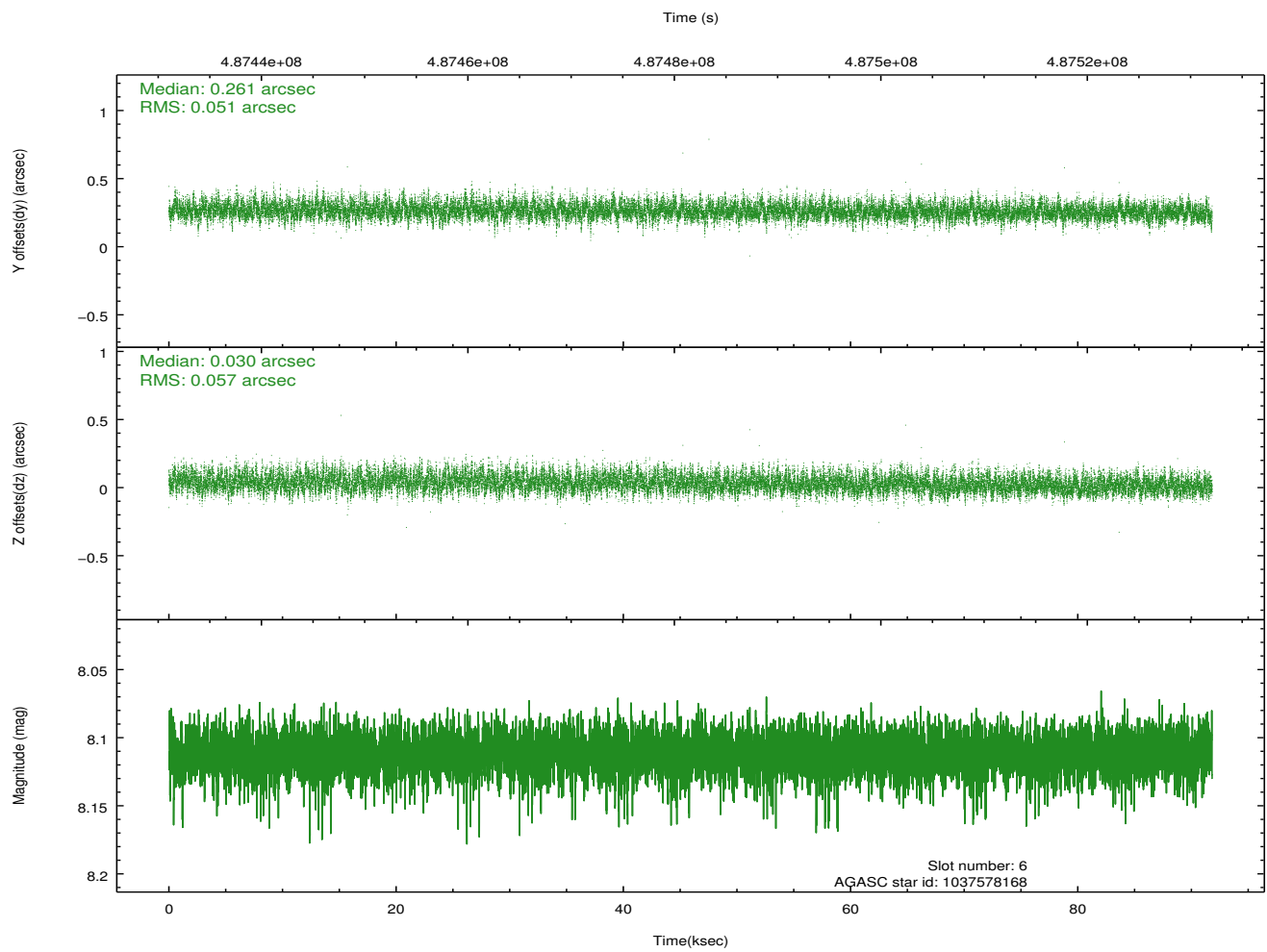
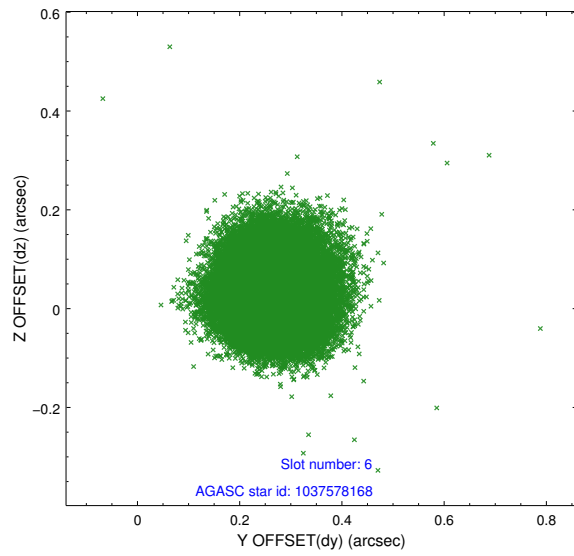
## 2.4.2 Slot 4



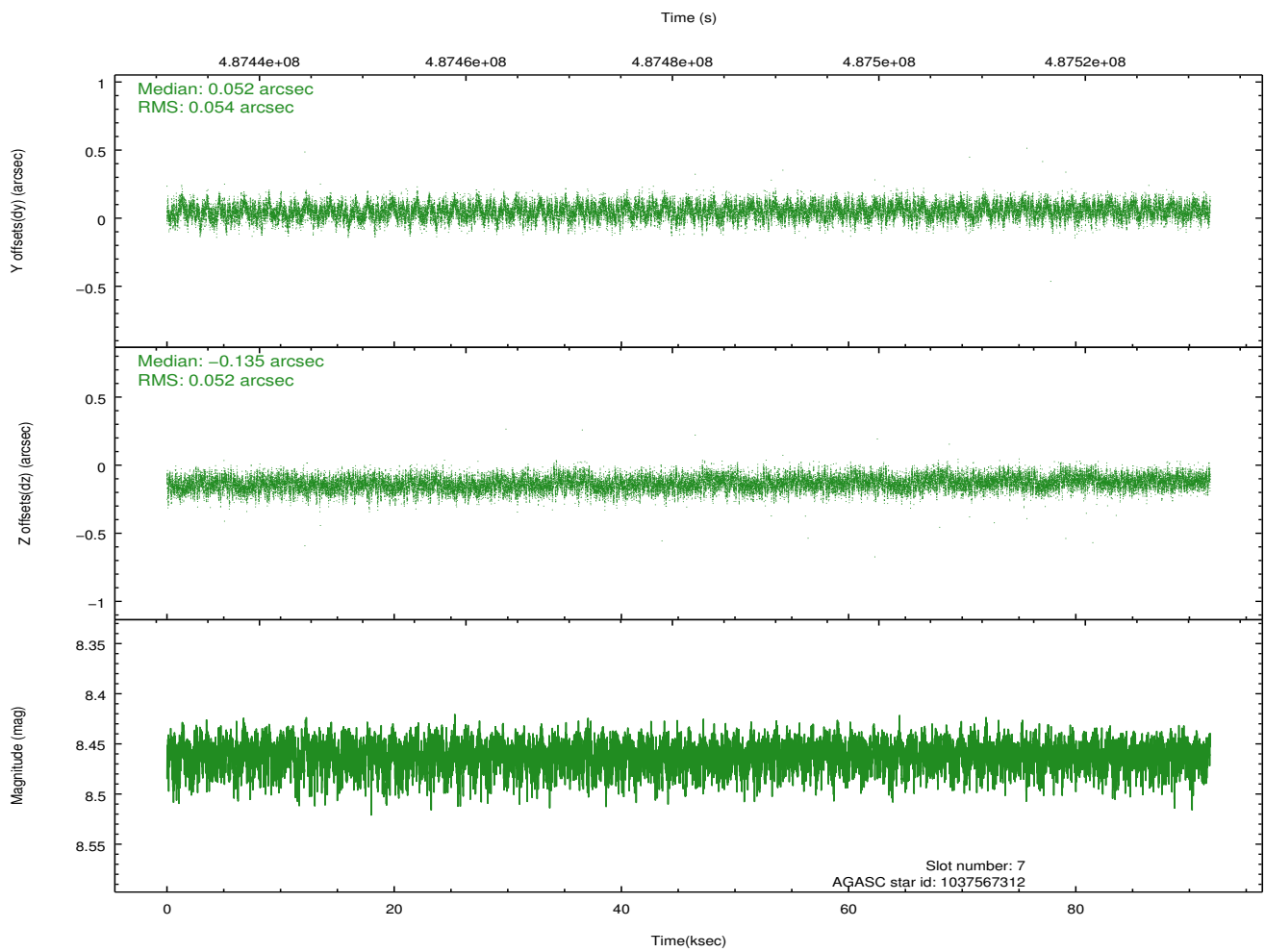
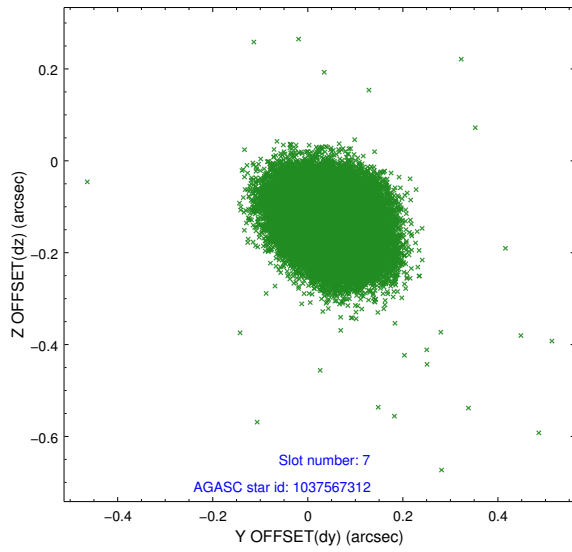
### 2.4.3 Slot 5



## 2.4.4 Slot 6

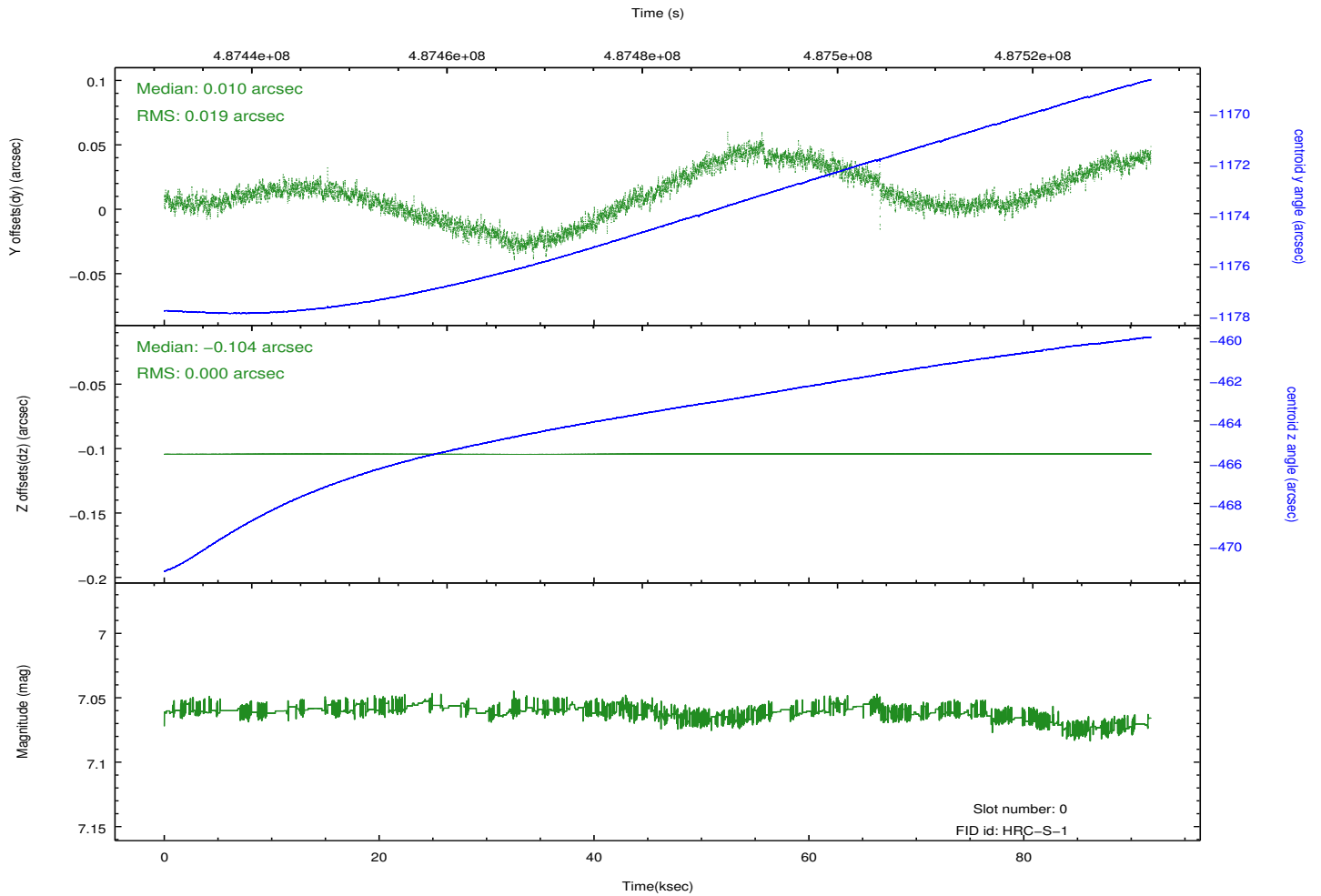
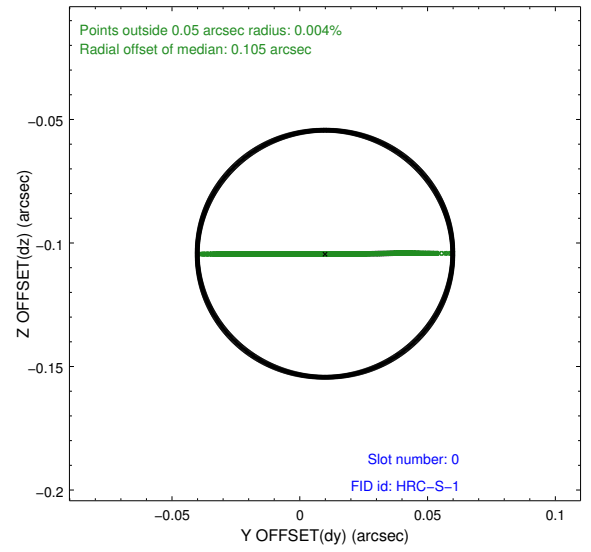
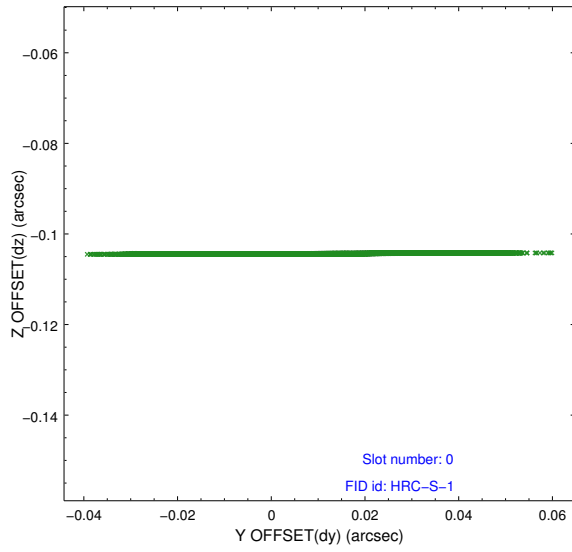


## 2.4.5 Slot 7

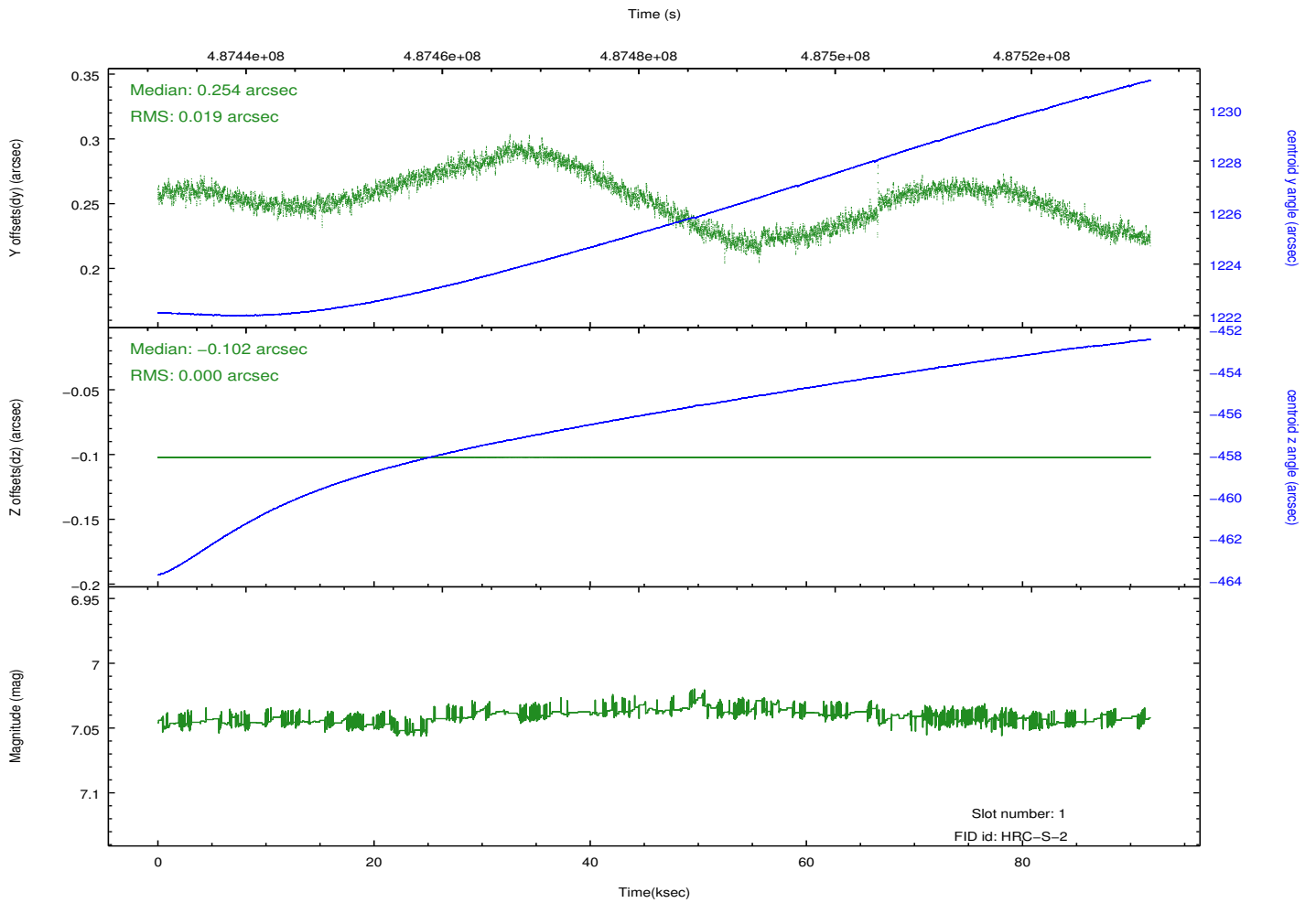
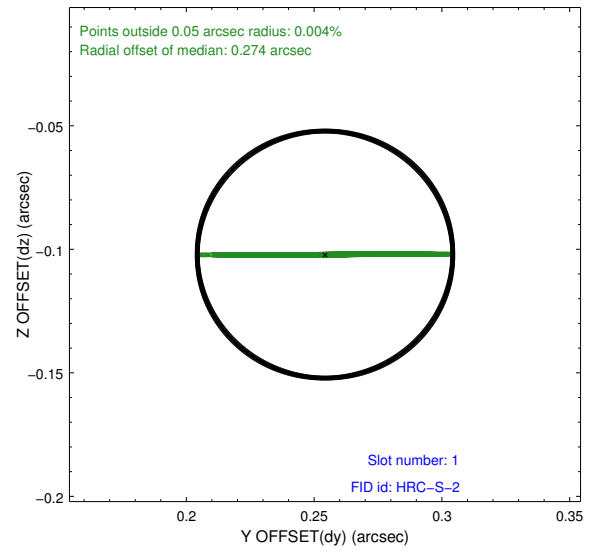
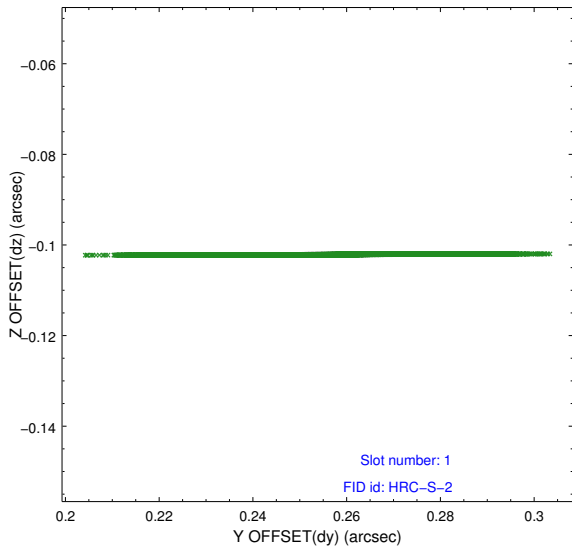


## 2.5 FID Slots

### 2.5.1 Slot 0

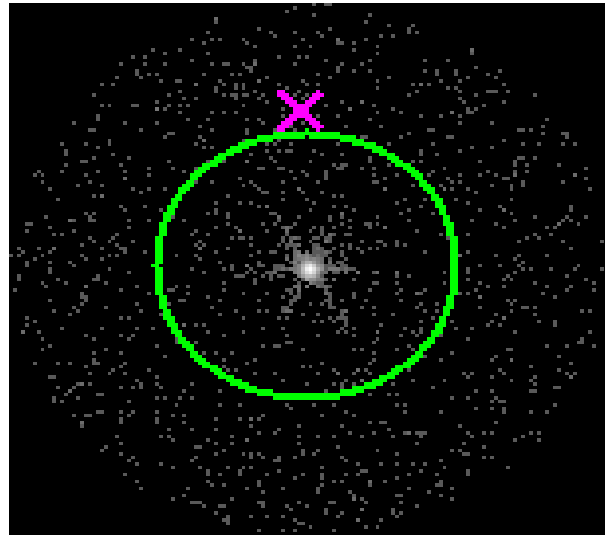


## 2.5.2 Slot 1

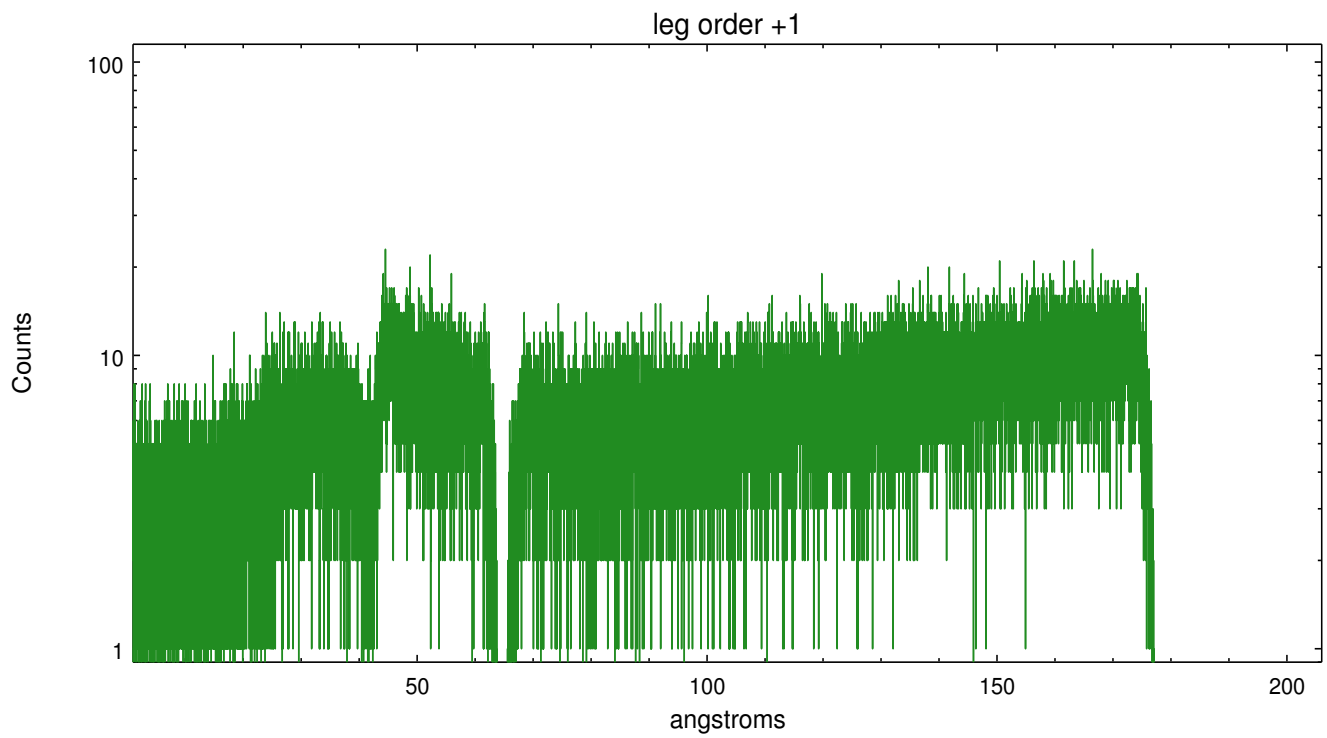
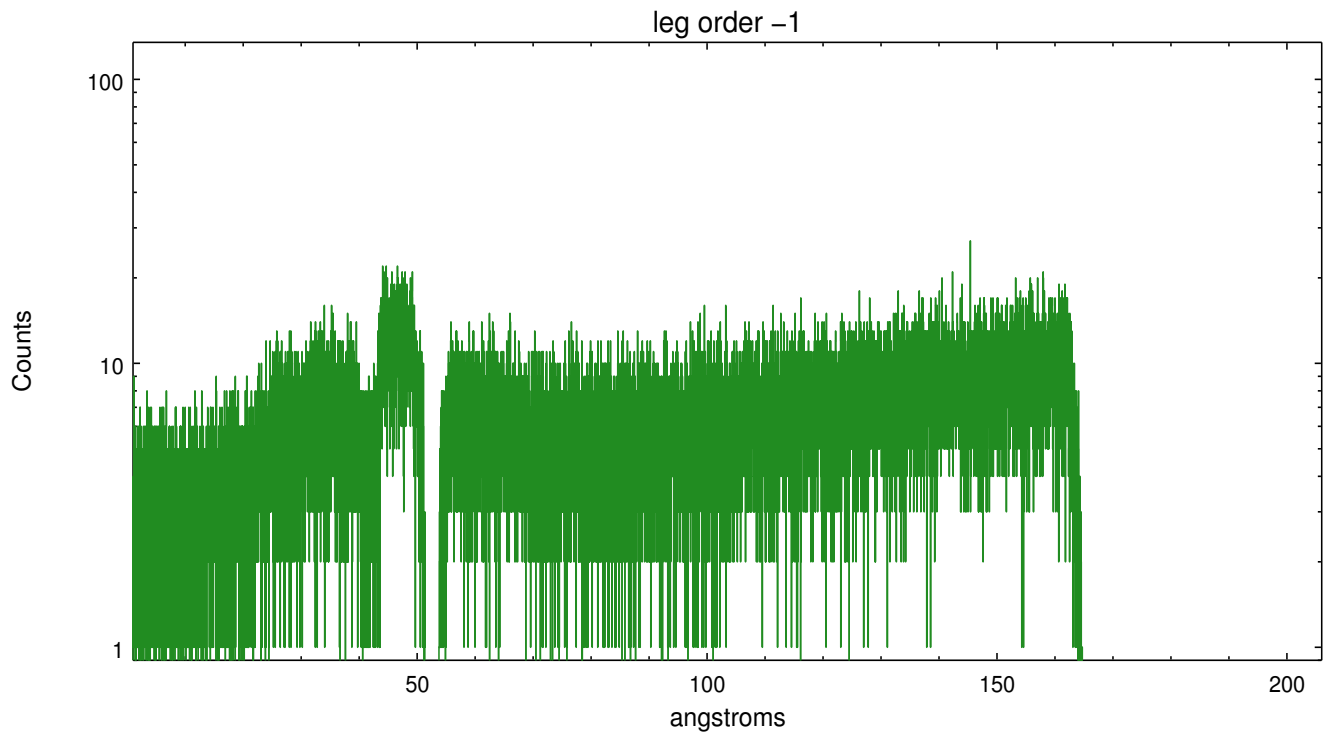


### 3 Gratings

#### 3.1 LETG Arm



LETG Zero Order



## A Summary

### A.1 Status

V&V Scientist	Joy Nichols
V&V Date (YYYY-MM-DD)	2013.06.20
V&V Edition	1
V&V Disposition and Status	OK
V&V Charge Time	91.826936237216

### A.2 Comments

The fid light in slo t2 was removed from the aspect solution due to poor data quality. The aspect solution is improved by the removal of this fid light from the solution.