

V&V Reference Report

L2 ASCDS Version : 10.1.1

Observation 15473 - L2 Version 2
Chandra X-Ray Center

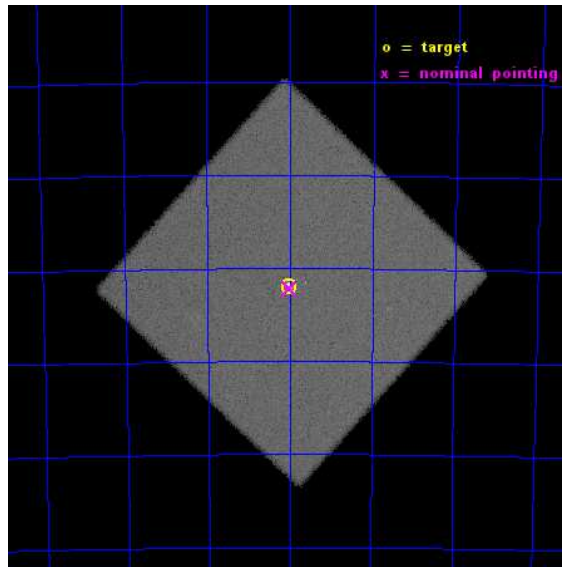
L2 Processing Date : Dec 9 2014

Contents

1	Front	2
2	OBI	3
2.1	OBI	3
2.1.1	Images	3
2.1.2	Parameters	4
2.1.3	Events	4
2.2	Compared Parameters	5
2.3	Aspect	6
2.4	Star Slots	9
2.4.1	Slot 3	9
2.4.2	Slot 4	10
2.4.3	Slot 5	11
2.4.4	Slot 6	12
2.4.5	Slot 7	13
2.5	FID Slots	14
2.5.1	Slot 0	14
2.5.2	Slot 1	15
2.5.3	Slot 2	16
A	Summary	17
A.1	Status	17
A.2	Comments	17

1 Front

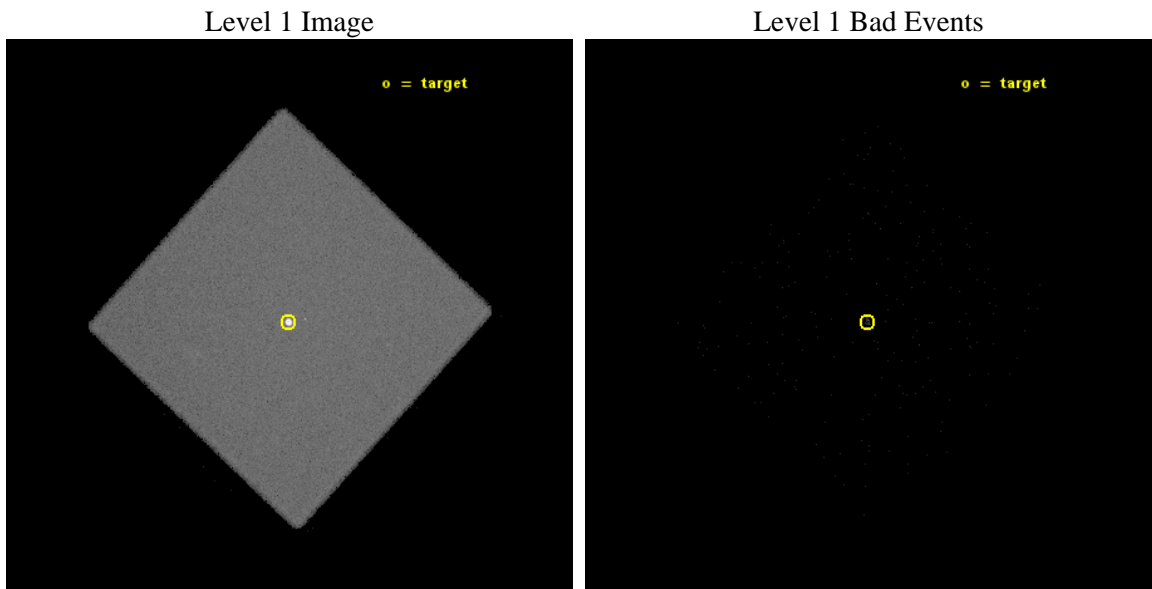
seq_num	590526	Sequence number
obs_id	15473	Observation id
title	AO-14 HRC-I Calibration Observation of E0102-72	Proposal title
observer	Dr. CXC Calibration	Principal investigator
object	E0102-72	Source name
ra_targ	16.01	Observer's specified target RA [deg]
dec_targ	-72.032028	Observer's specified target Dec [deg]
ra_nom	16.004222067014	Nominal RA [deg]
dec_nom	-72.036021782339	Nominal Dec [deg]
roll_nom	267.87423895977	Nominal Roll [deg]
revision	2	Processing version of data
ontime	10128.025556982	[s]
livetime	10051.572317575	Ontime multiplied by DTCOR
l2events	609084	Number of level 2 events



2 OBI

2.1 OBI

2.1.1 Images



2.1.2 Parameters

obi_num	0	Obi number	sched_exp_time	10000.000000	[s] Scheduled observation exposure time
ascdsver	10.3.1	Processing system revision	ontime	10128.025556982	[s]
caldbver	4.6.4	 	l1events	905013	Number of level 1 events
date	2014-12-09T22:42:59	Date and time of file creation			
revision	2	Processing version of data			

2.1.3 Events

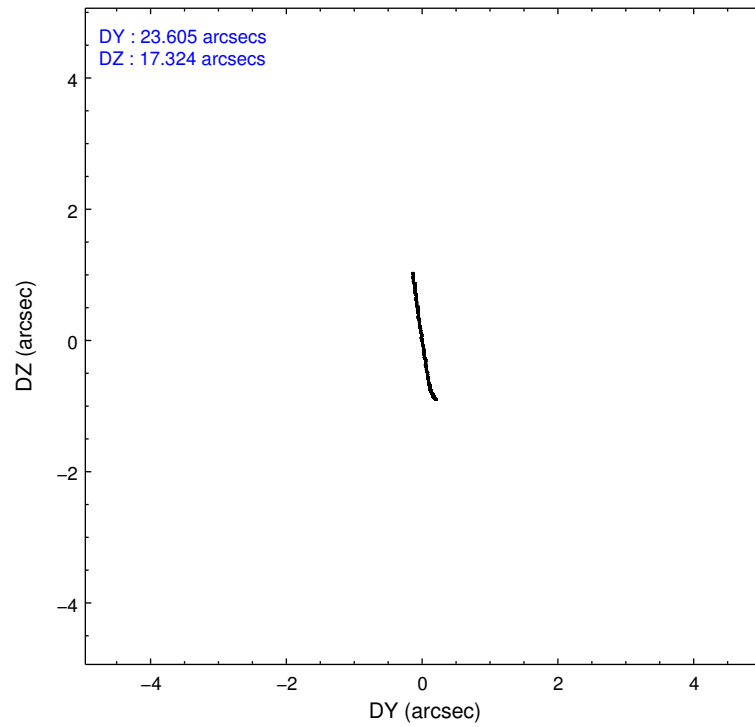
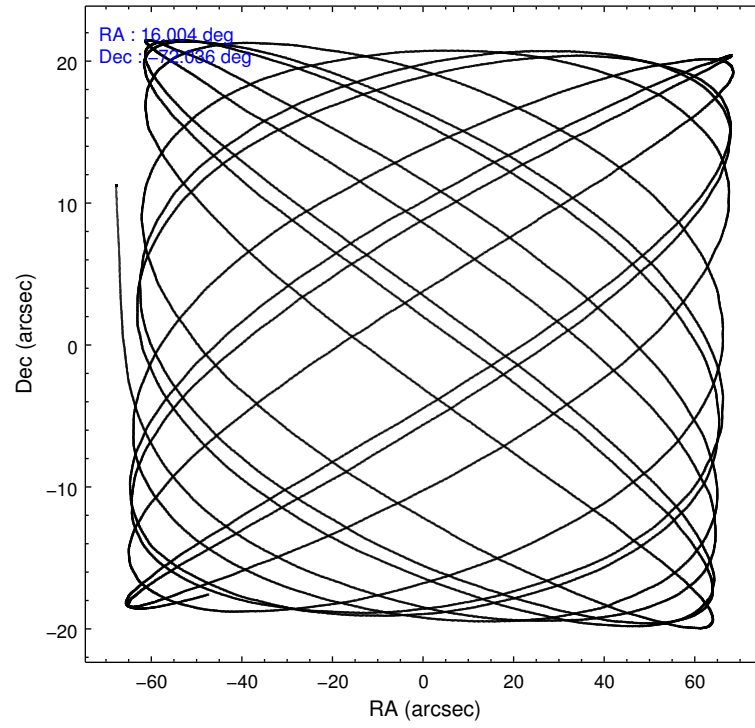
Level 1 Events

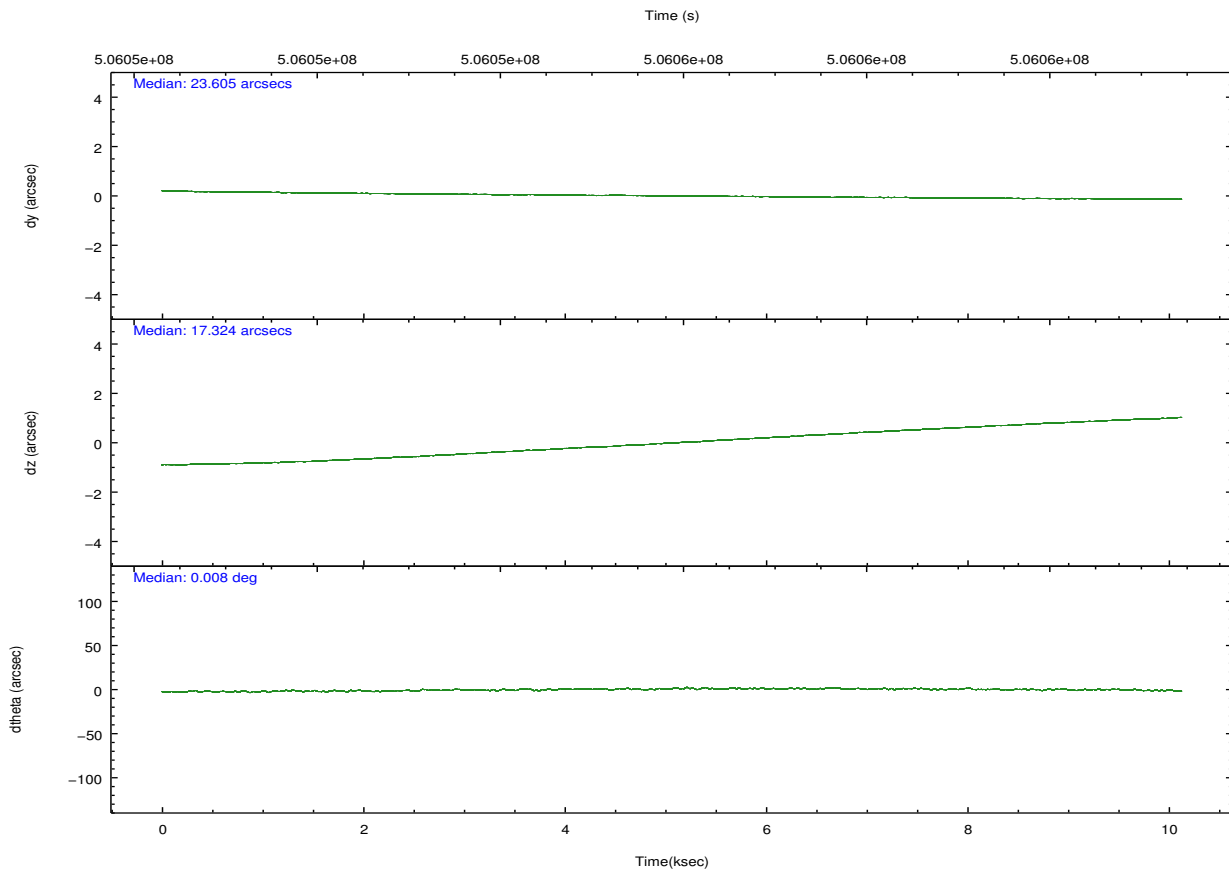
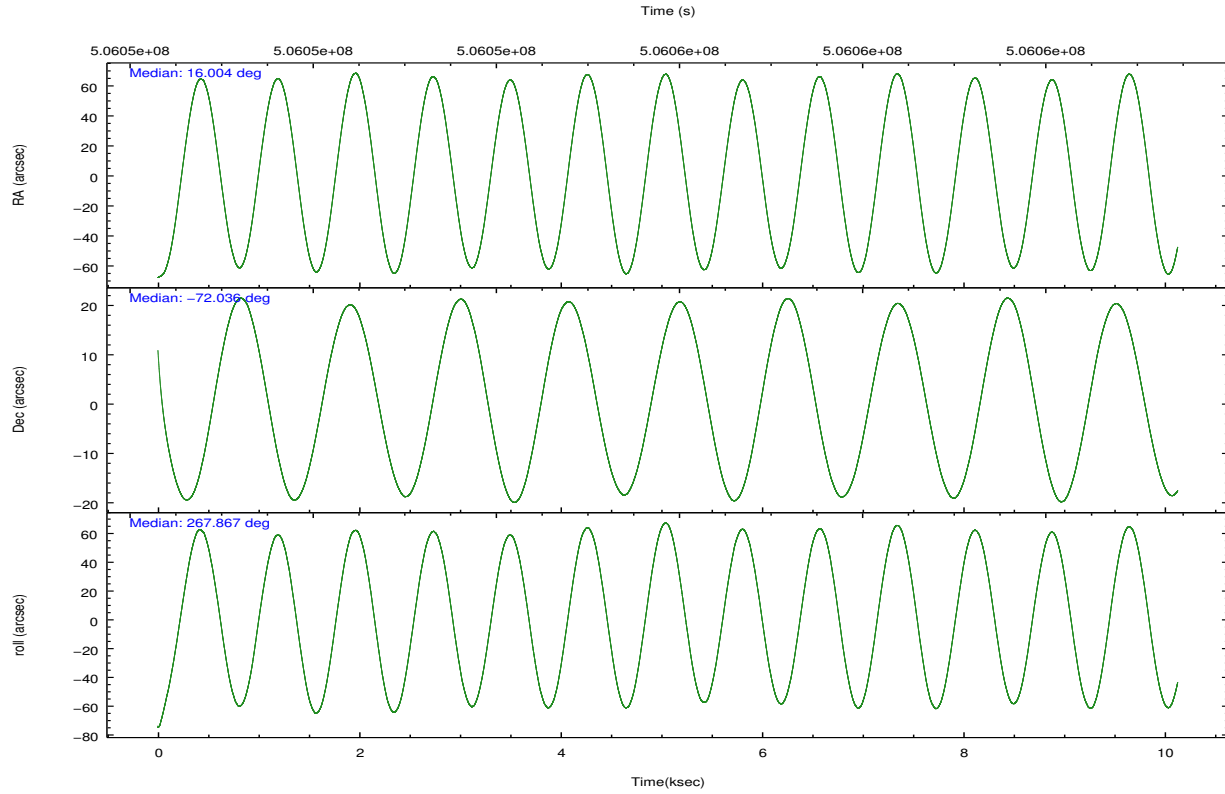
	segment 0
level 1 events	905013
rejected events	95196
rejected %	10%

2.2 Compared Parameters

Parameter	Planned	Actual	Parameter	Planned	Actual
Instrument	HRC	HRC	Obspar format version number	7	7
Detector	HRC-I	HRC-I	Obspar file type	PREDICTED	ACTUAL
Grating	NONE	NONE	Obspar update status	NONE	UPDATED
Data mode	OBSERVING	OBSERVING			
Observation mode	POINTING	POINTING			
[deg] Pointing RA	15.961508	16.00422206701401			
[deg] Pointing Dec	-72.012140	-72.03602178233899			
[deg] Pointing Roll	267.929121	267.8742389597712			
[mm] SIM focus pos	-1.040293	-1.038866356238299			
[mm] SIM defocus	0	0.001426264420575141			
[mm] SIM translation stage pos	126.985494	126.9829799899862			
[mm] SIM translation stage offset	0	0.002508901615314585			
[s] Observation start time (MET)	506050938.184000	506049628.33099			
Observation start date	2014-01-14T01:41:11	2014-01-14T01:20:28			
[s] Observation end time (MET)	506060938.184000	506061956.00667			
Observation end date	2014-01-14T04:27:51	2014-01-14T04:45:56			

2.3 Aspect





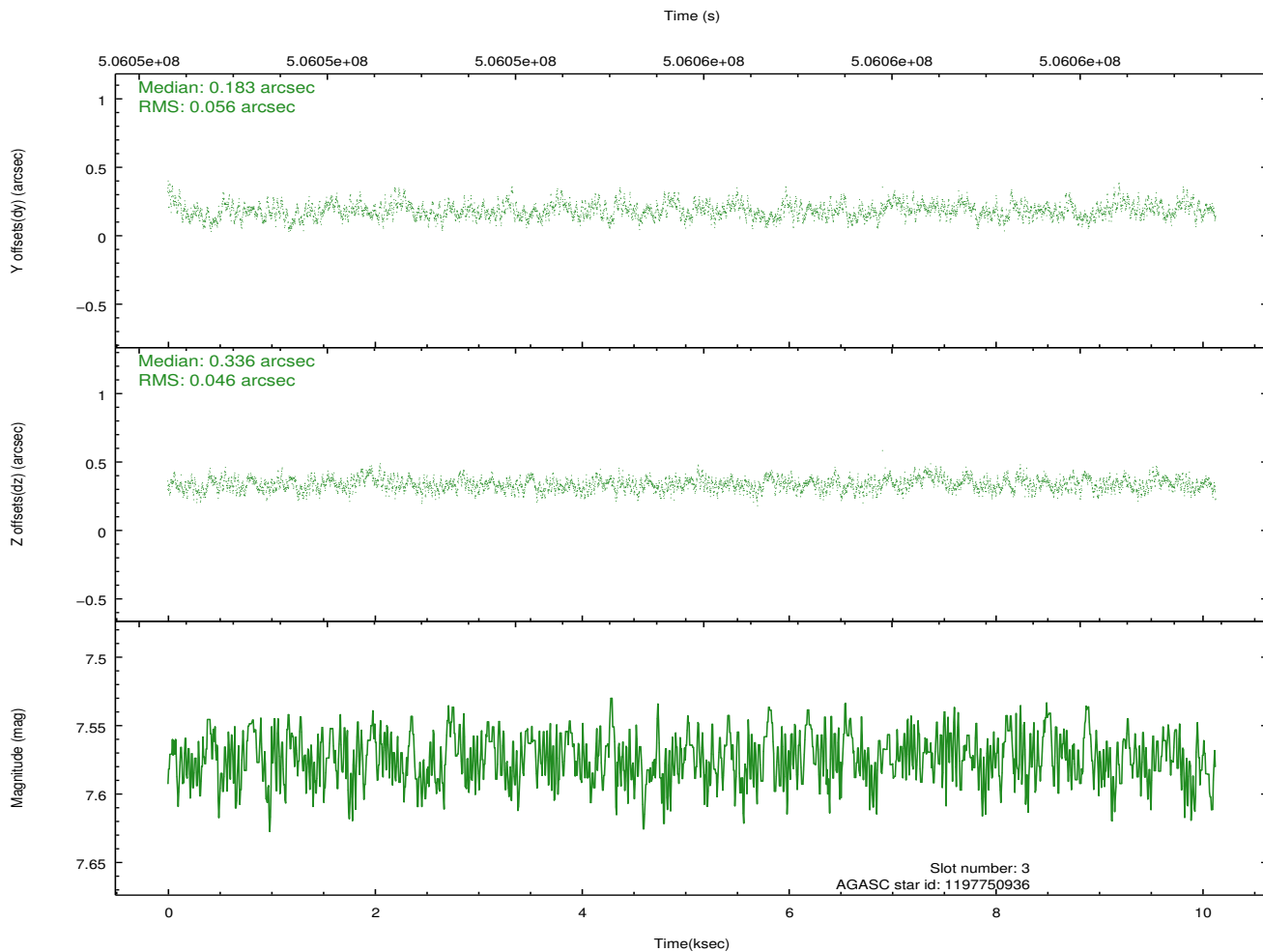
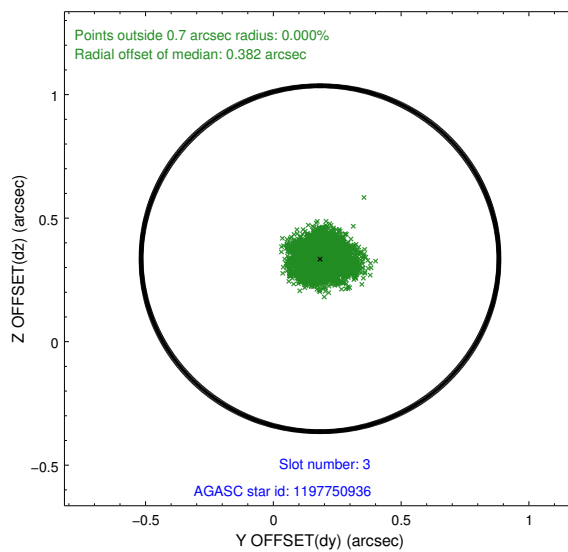
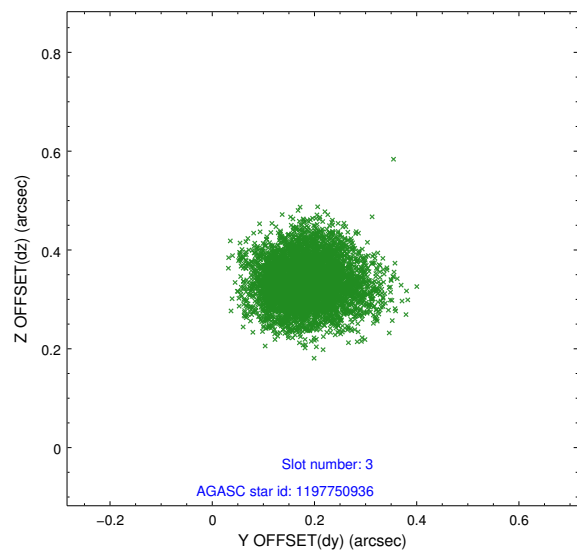
Slot Statistics

slot	status	used	id	mag	n_pts	med_dy	med_dz	dr1	dr2	ra	dec	mean_y	mean_z
0	FID		HRC-I-1	6.98	2471	-0.102	0.044	0.013	0.022	0.000000	0.000000	-779.73	-1305.46
1	FID		HRC-I-2	7.01	2471	0.254	-0.129	0.014	0.030	0.000000	0.000000	832.94	-1307.70
2	FID		HRC-I-3	7.06	2471	-0.033	-0.005	0.012	0.021	0.000000	0.000000	-1207.85	998.52
3	GUIDE	used	1197750936	7.57	4942	0.183	0.336	0.078	0.124	15.387940	-71.549550	-1636.84	-712.61
4	GUIDE	used	1197884712	8.30	4942	0.075	-0.113	0.094	0.146	16.087398	-72.252690	860.19	169.49
5	GUIDE	used	1198283128	7.84	4942	-0.241	-0.030	0.074	0.114	17.272580	-72.642428	2231.61	1490.20
6	GUIDE	used	1197885328	7.25	4942	0.119	-0.059	0.085	0.137	16.283090	-71.733943	-1013.37	328.23
7	GUIDE	used	1197885104	9.34	4938	-0.140	-0.143	0.164	0.251	17.845067	-72.189368	595.22	2096.30

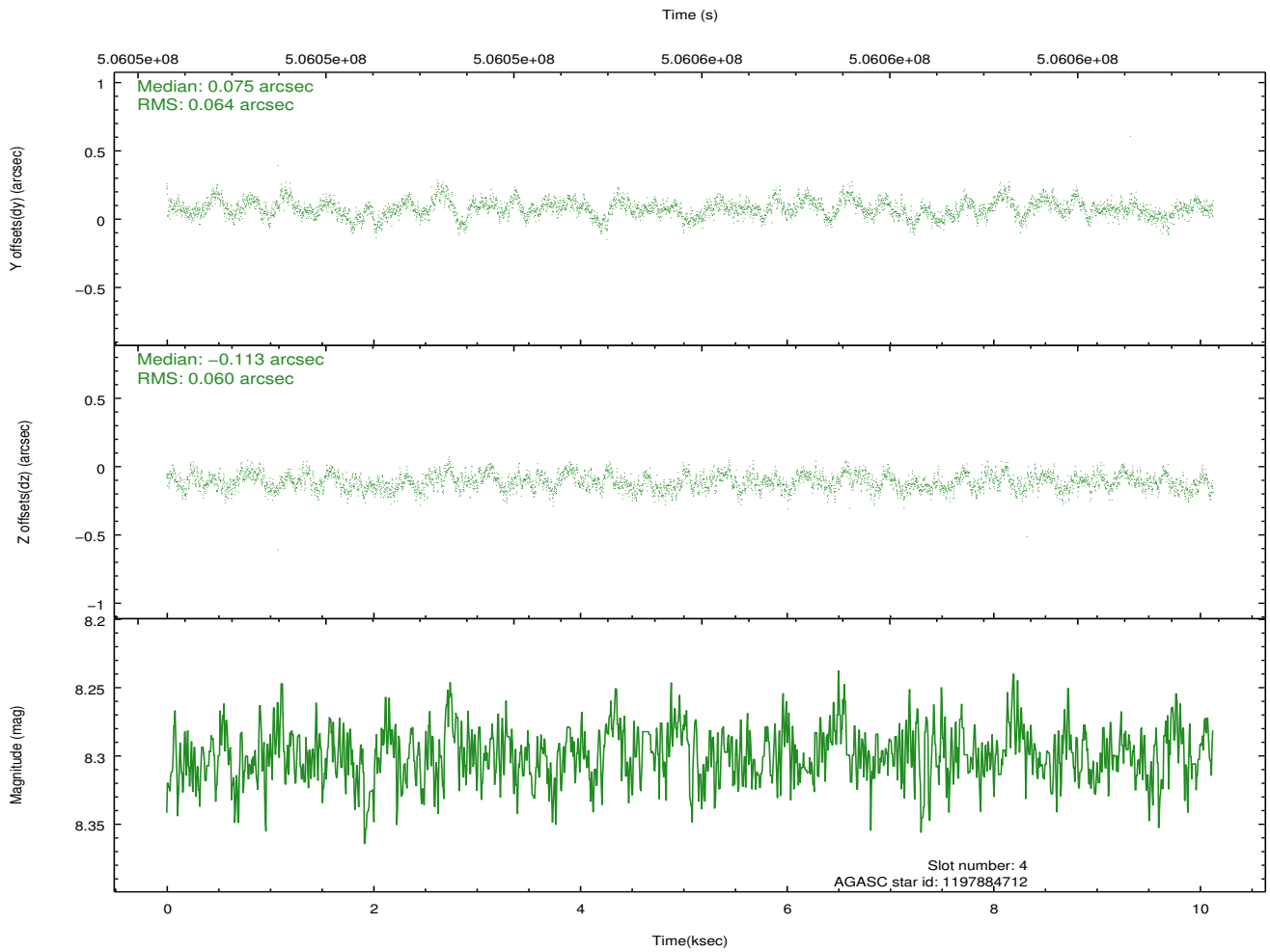
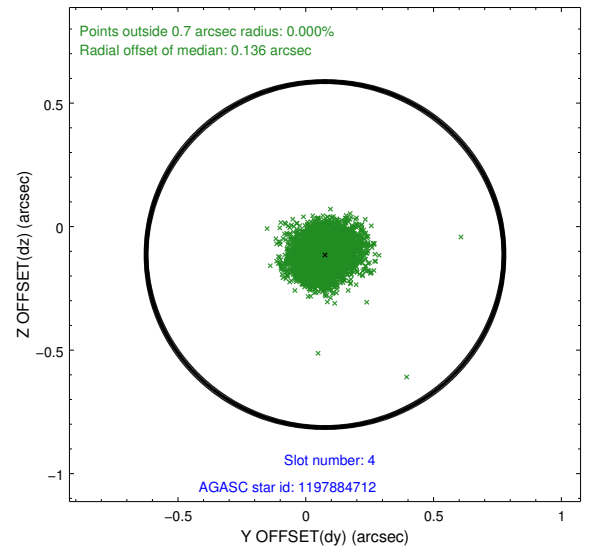
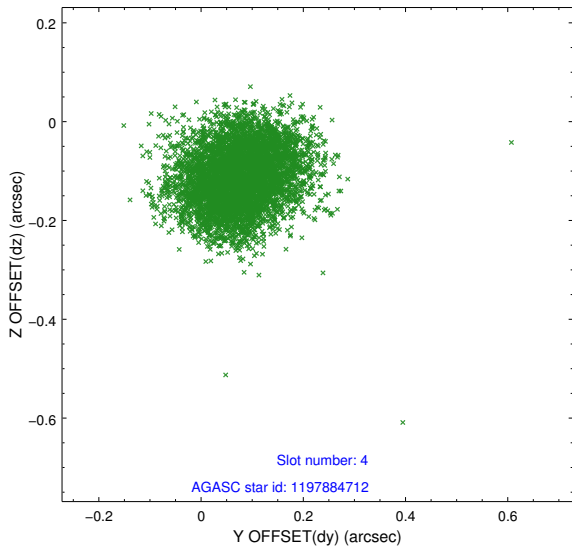
∞

2.4 Star Slots

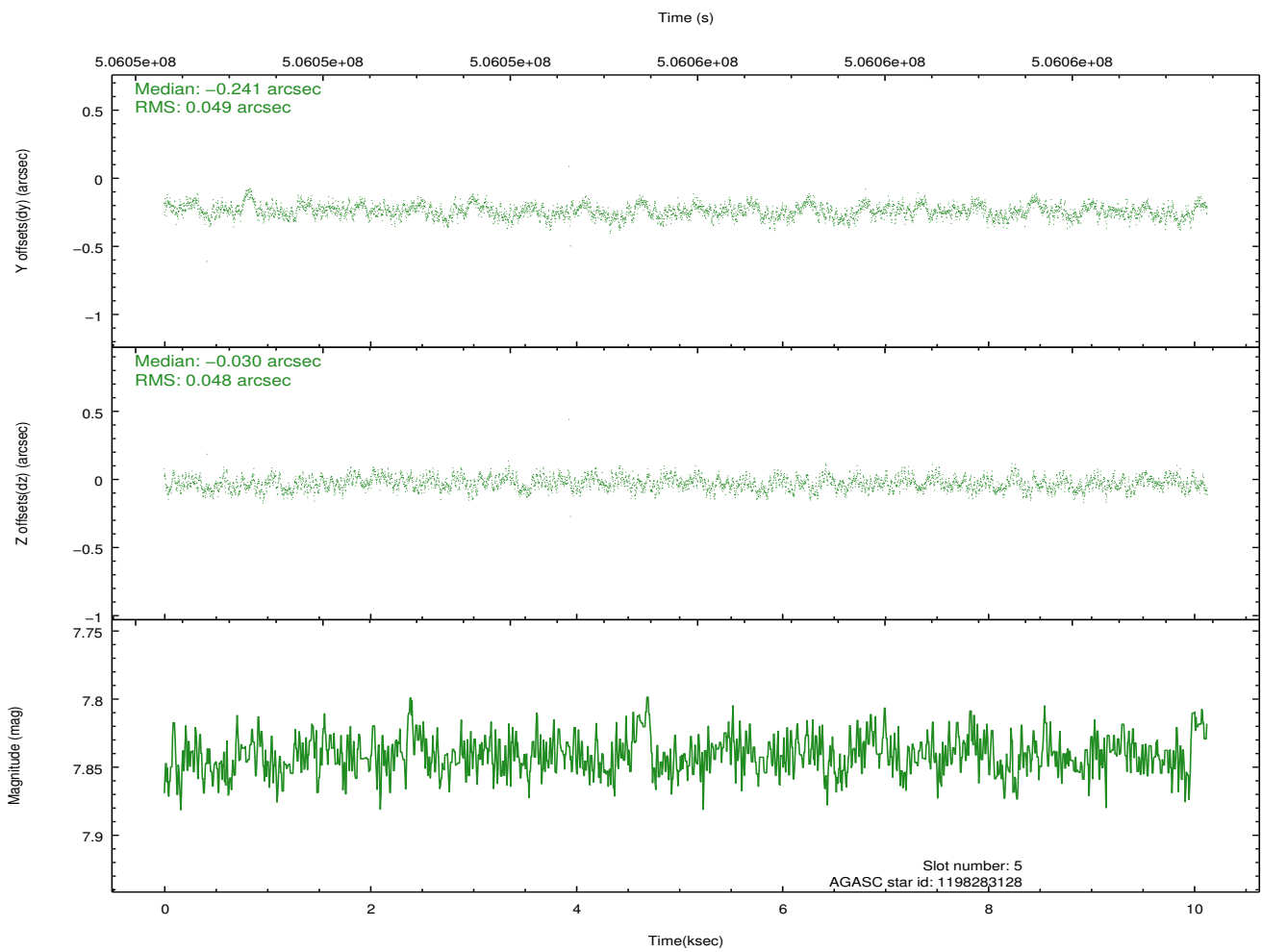
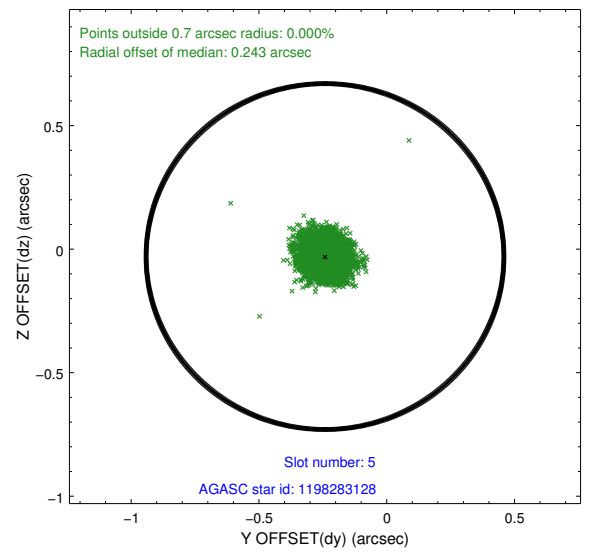
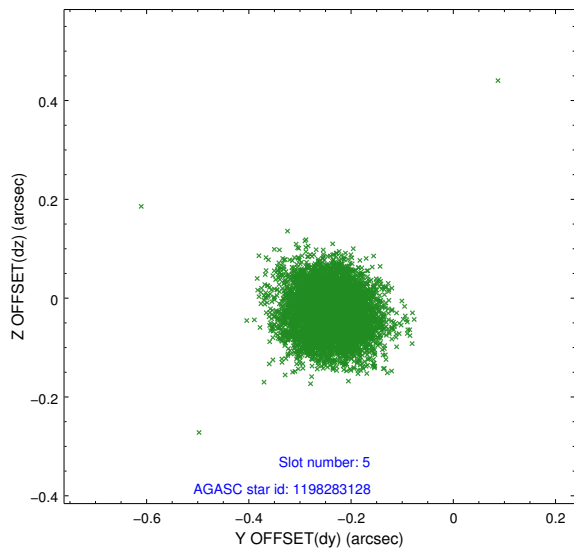
2.4.1 Slot 3



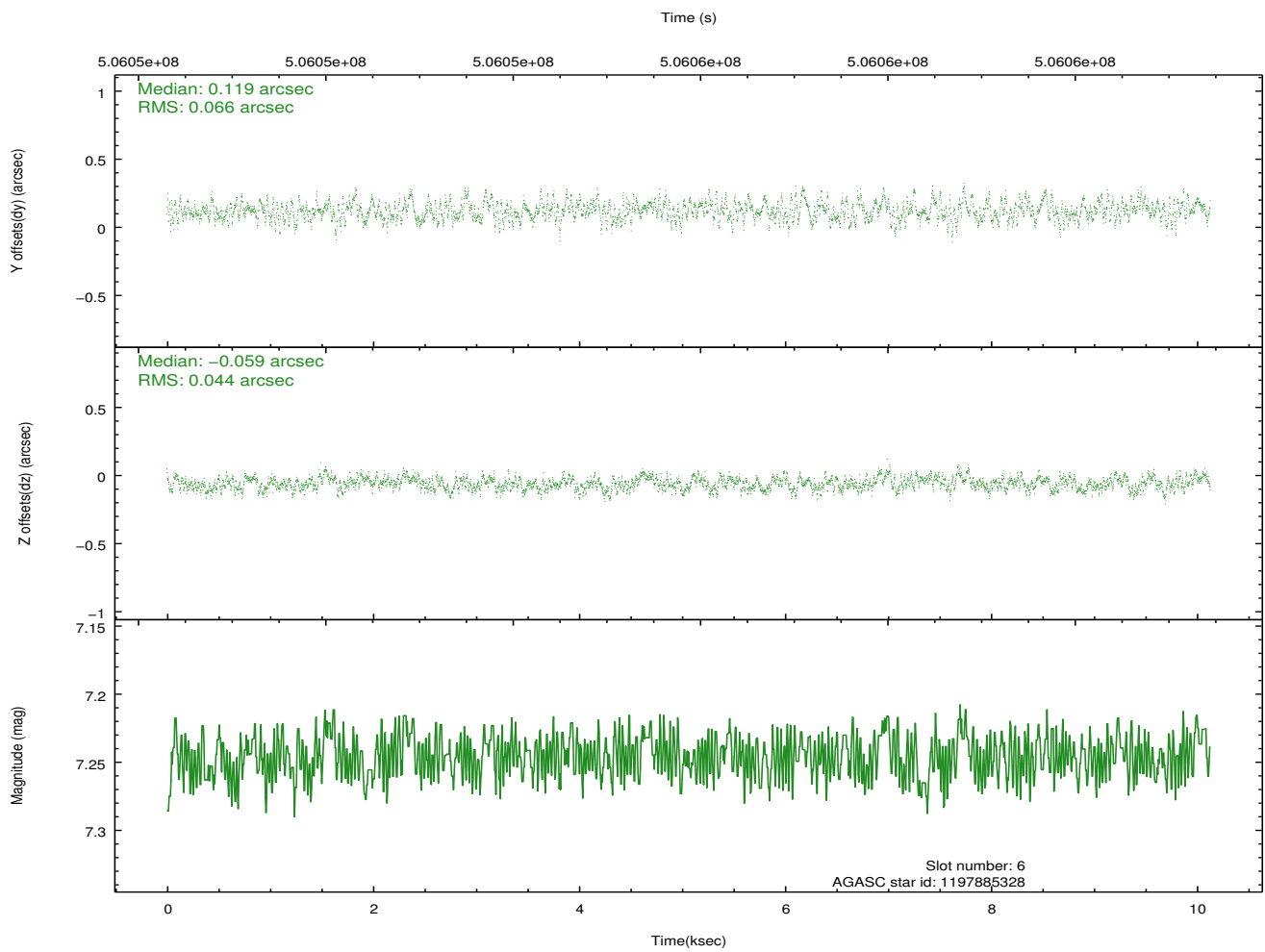
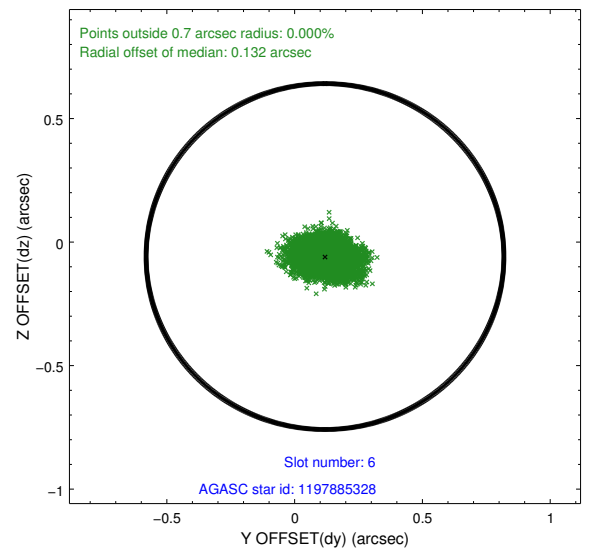
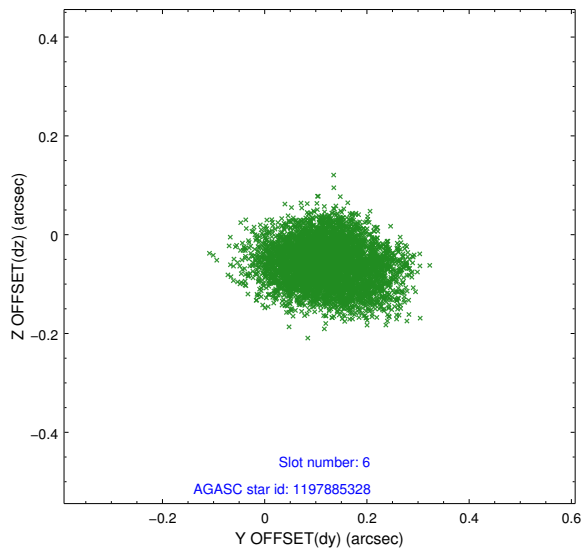
2.4.2 Slot 4



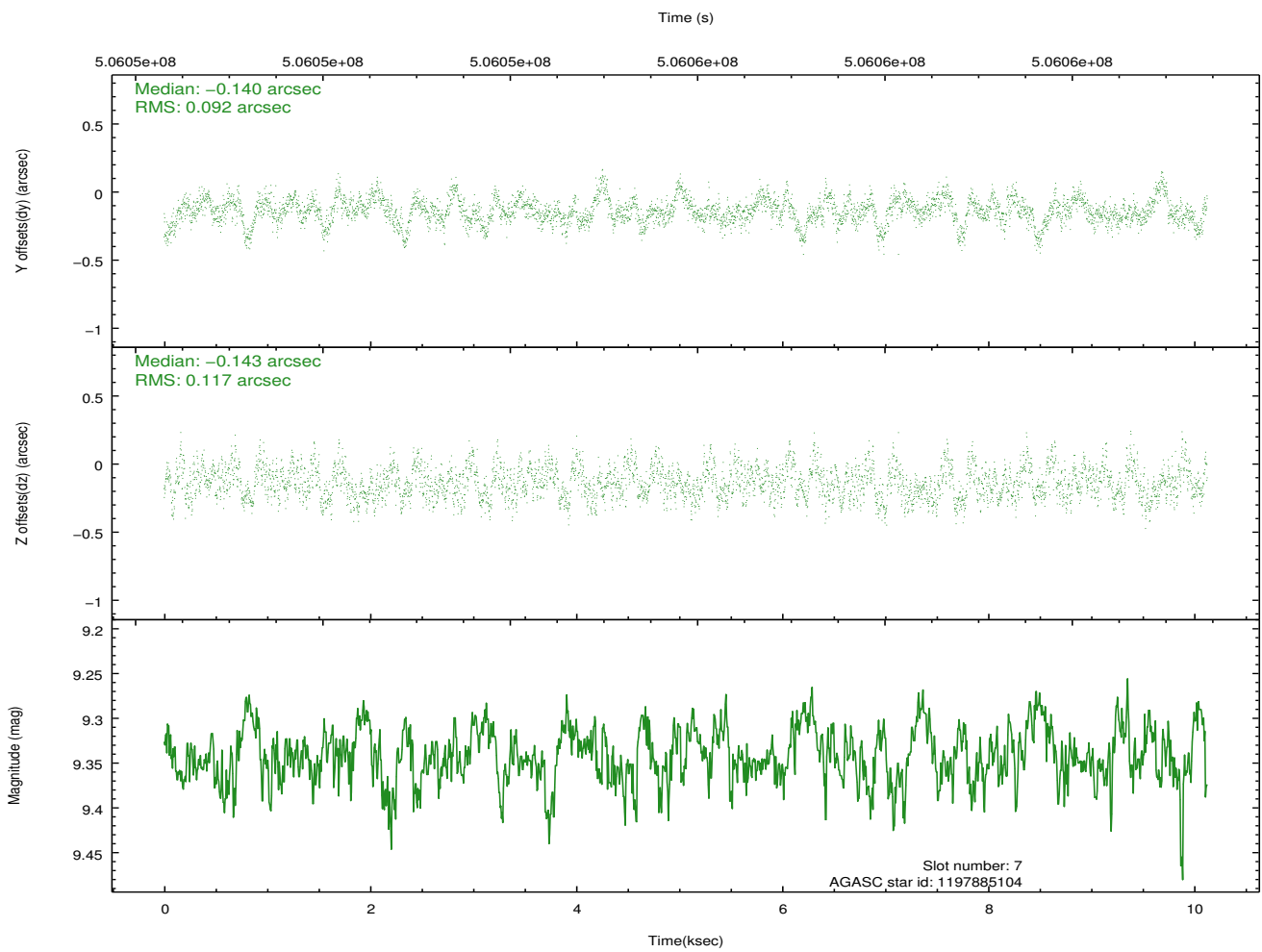
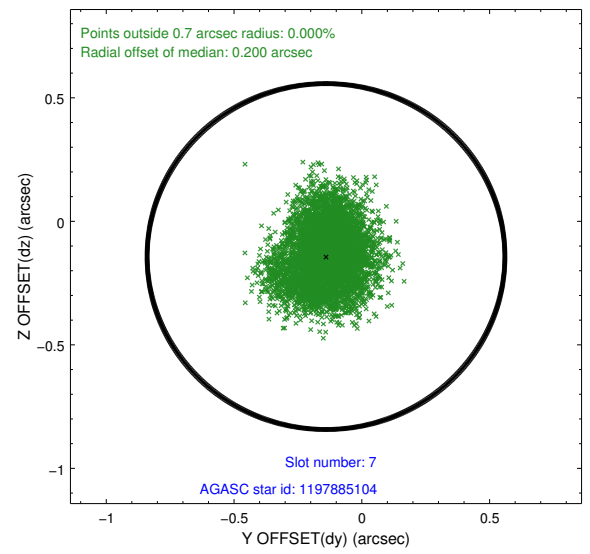
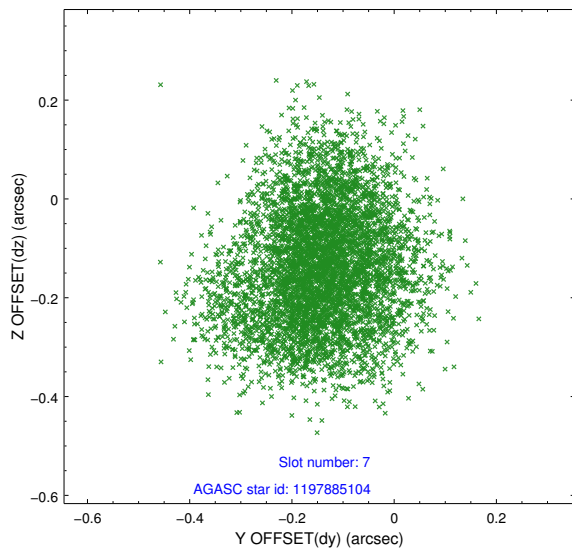
2.4.3 Slot 5



2.4.4 Slot 6

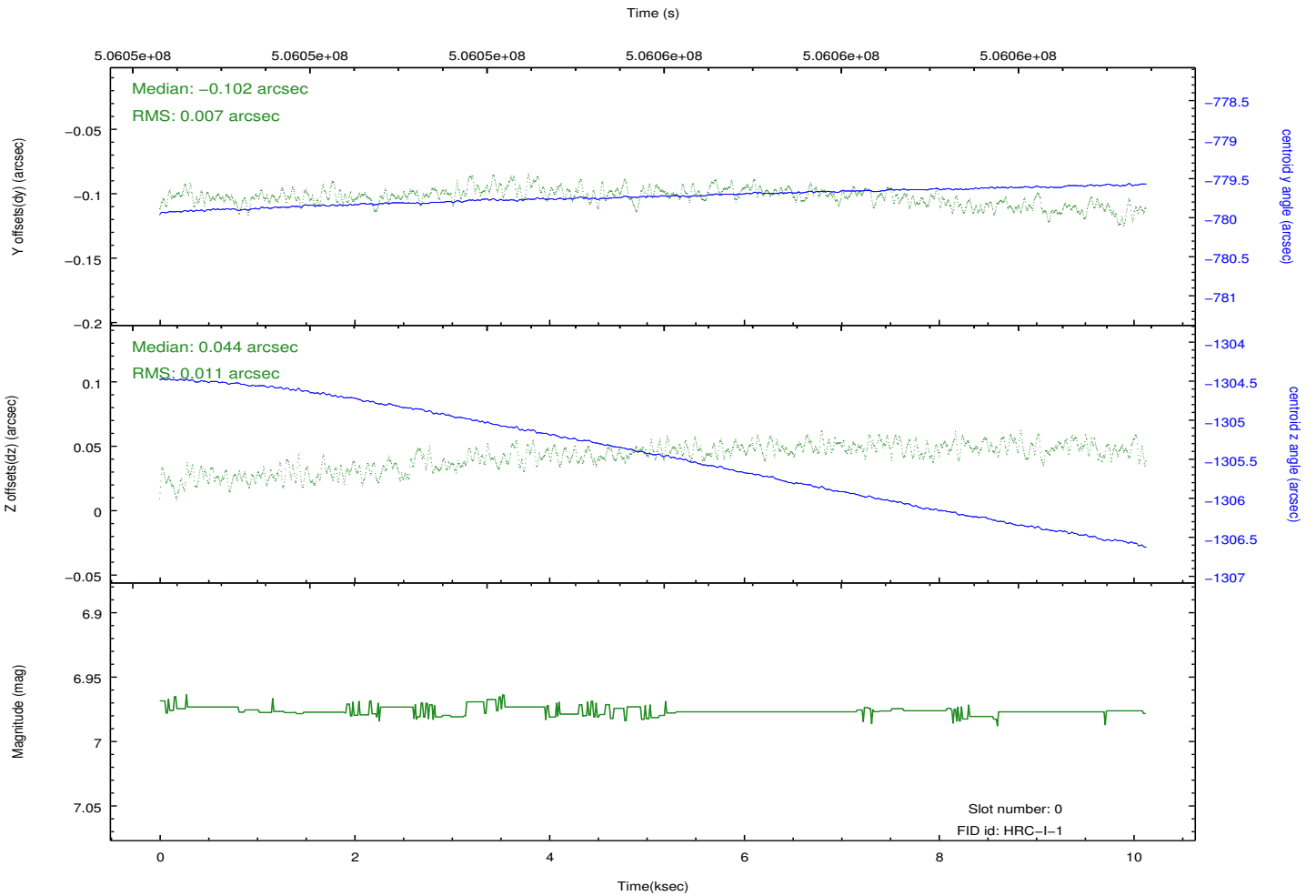
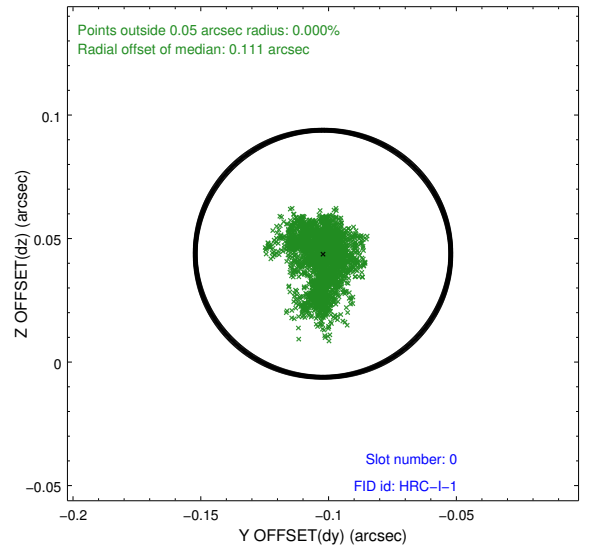
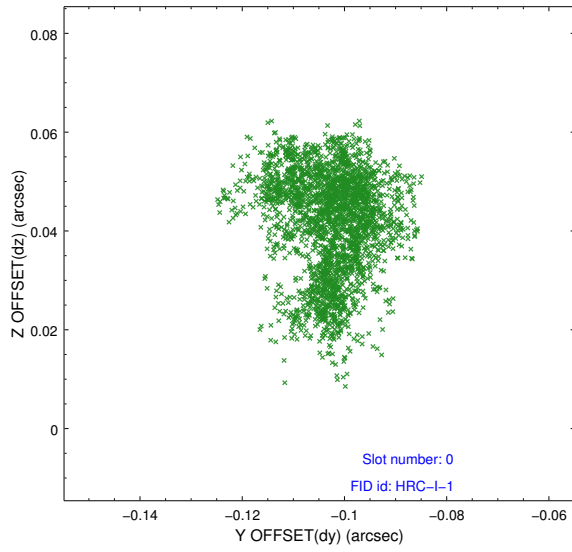


2.4.5 Slot 7

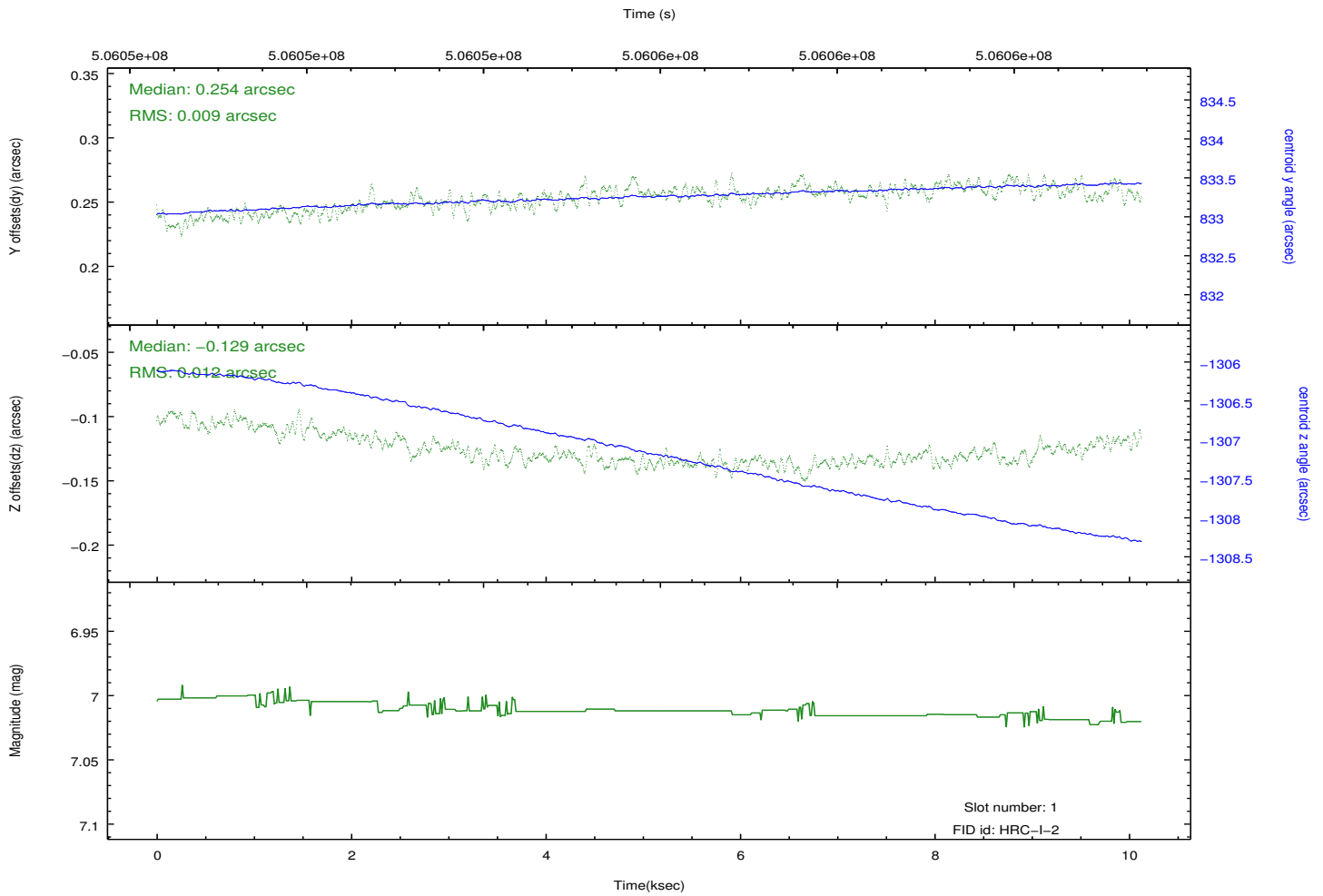
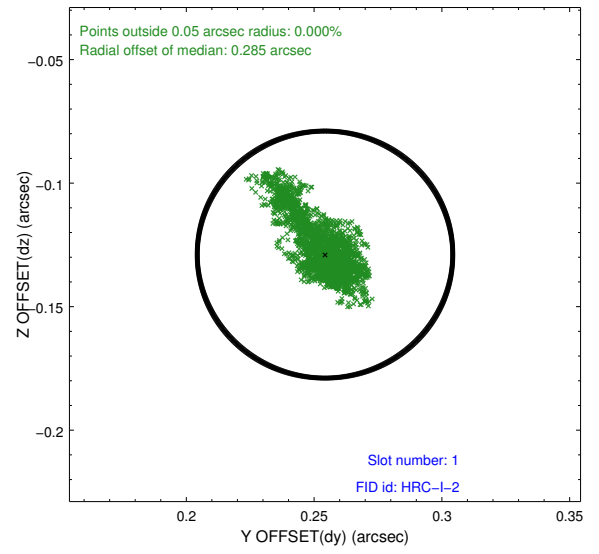
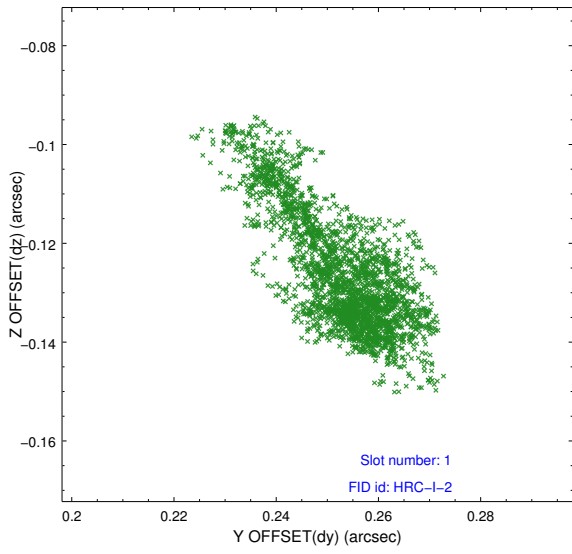


2.5 FID Slots

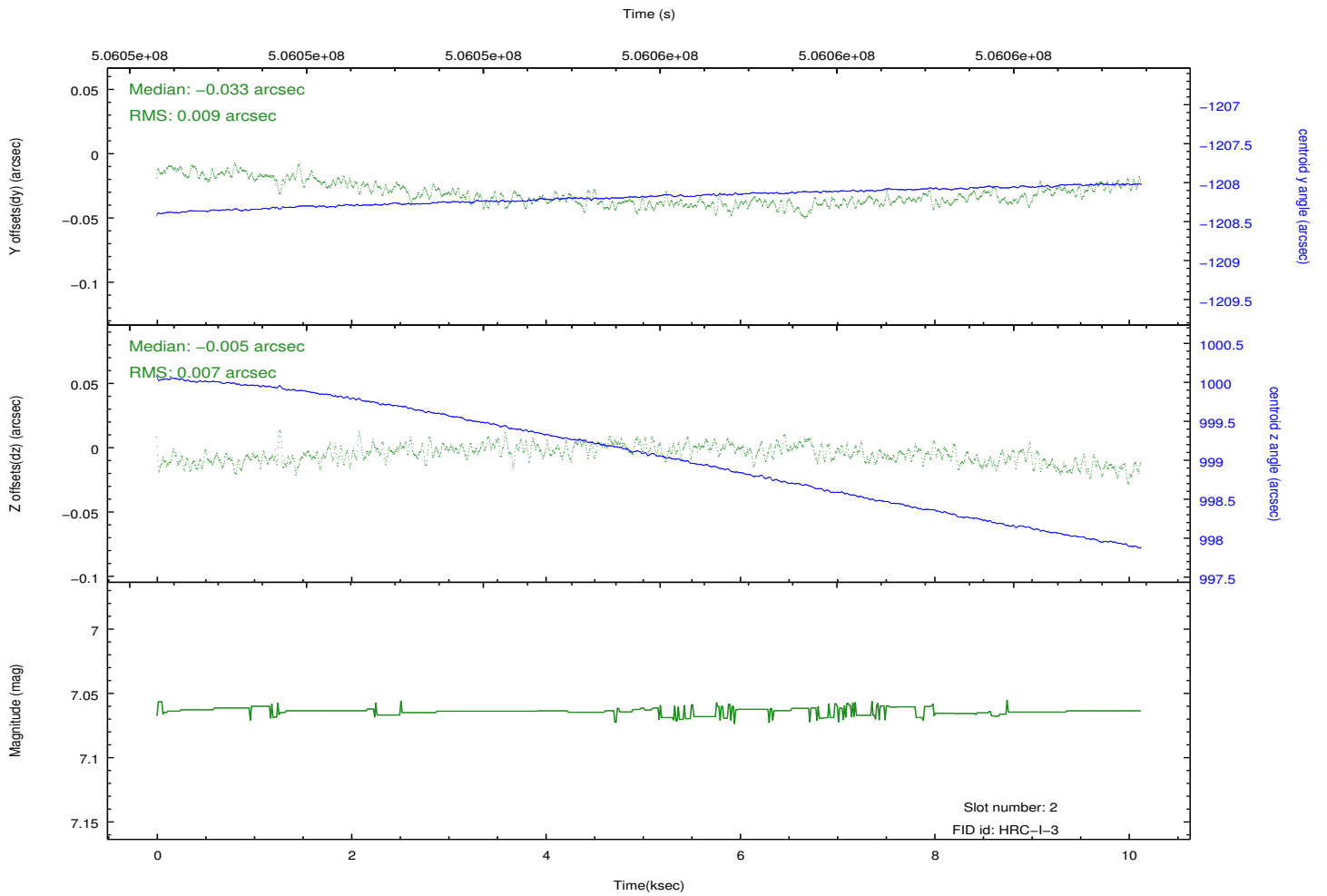
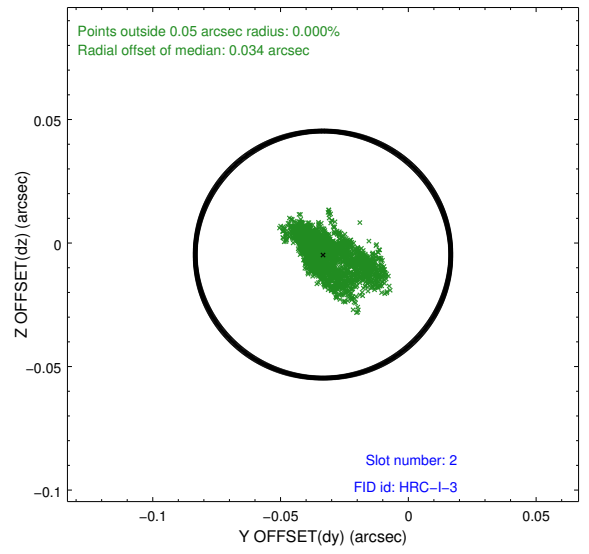
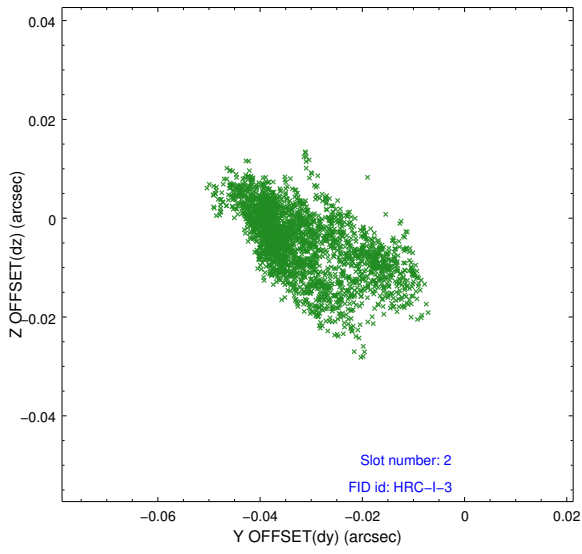
2.5.1 Slot 0



2.5.2 Slot 1



2.5.3 Slot 2



A Summary

A.1 Status

V&V Scientist	Beth Sundheim
V&V Date (YYYY-MM-DD)	2014.12.15
V&V Edition	1
V&V Disposition and Status	OK
V&V Charge Time	10.128025556982

A.2 Comments

These data have been reprocessed with new aspect alignment calibration files that correct small mean offsets (up to 0.4 arcsecs) and improve overall astrometric accuracy. The new calibration was determined using data from the time period being reprocessed and was performed using cross-correlation of X-ray sources with radio and optical counterparts.