

V&V Reference Report

L2 ASCDS Version : 8.4.5

Observation 1613 - L2 Version 3
Chandra X-Ray Center

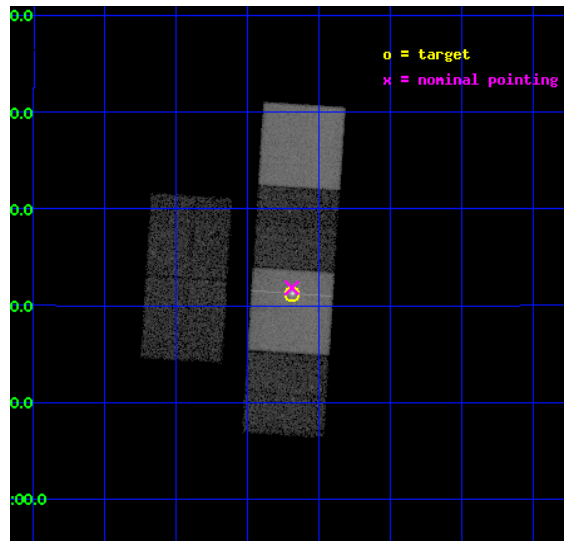
L2 Processing Date : Sep 24 2012

Contents

1	Front	2
2	OBI	3
2.1	OBI	3
2.1.1	Images	3
2.1.2	Bias	3
2.1.3	Parameters	4
2.1.4	Events	4
2.2	Compared Parameters	5
2.3	Aspect	6
2.4	Star Slots	9
2.4.1	Slot 3	9
2.4.2	Slot 4	10
2.4.3	Slot 5	11
2.4.4	Slot 6	12
2.4.5	Slot 7	13
2.5	FID Slots	14
2.5.1	Slot 0	14
2.5.2	Slot 1	15
2.5.3	Slot 2	16
A	Summary	17
A.1	Status	17
A.2	Comments	17

1 Front

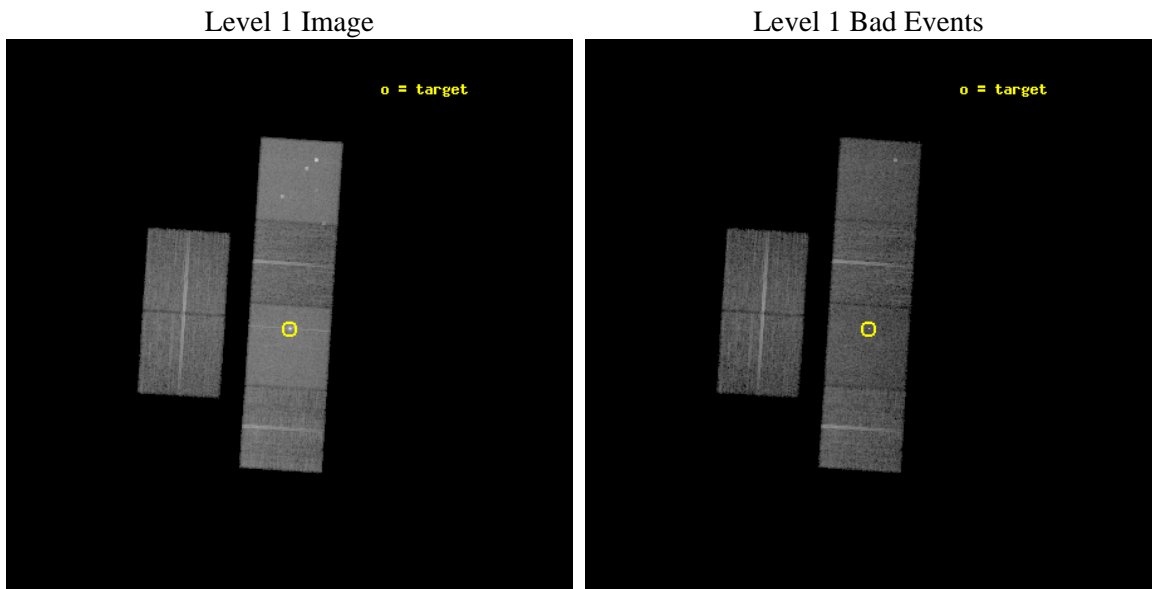
seq_num	700229	Sequence number
obs_id	1613	Observation id
title	STUDIES OF RADIO JETS AND THE NARROW LINE REGIONS OF ACTIVE GALAXIES	
observer	Professor Andrew Wilson	Principal investigator
object	3C120	Source name
dtcycle	0	
cycle	P	events from which exps? Prim/Second/Both
ra_targ	68.29625	Observer's specified target RA [deg]
dec_targ	5.354333	Observer's specified target Dec [deg]
ra_nom	68.297340993721	Nominal RA [deg]
dec_nom	5.3640264745665	Nominal Dec [deg]
roll_nom	93.745225407307	Nominal Roll [deg]
revision	3	Processing version of data
ontime	13043.200012133	Sum of GTIs [s]
livetime	12878.039159907	Livetime [s]
ontime2	13039.959021971	Sum of GTIs [s]
ontime3	13043.200012133	Sum of GTIs [s]
ontime5	13043.200012133	Sum of GTIs [s]
ontime6	13043.200012133	Sum of GTIs [s]
ontime7	13043.200012133	Sum of GTIs [s]
ontime8	13043.200012133	Sum of GTIs [s]
l2events	202746	Number of level 2 events



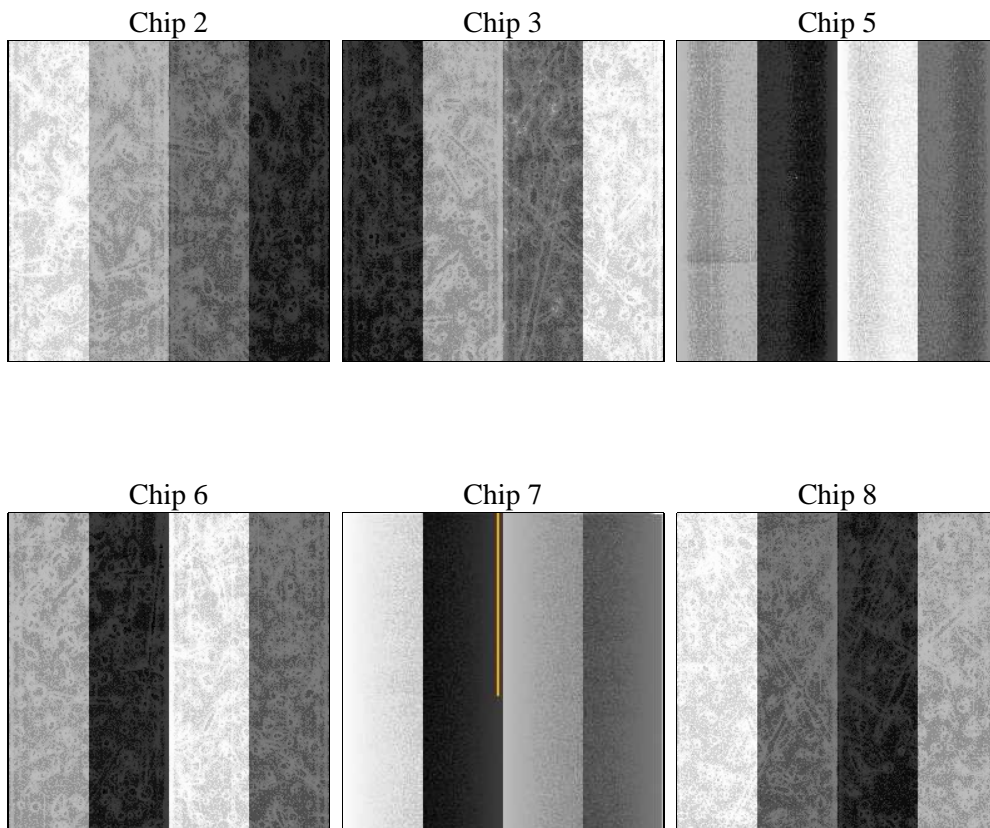
2 OBI

2.1 OBI

2.1.1 Images



2.1.2 Bias



2.1.3 Parameters

obi_num	0	Obi number	sched_exp_time	13096.013000	[s] Scheduled observation exposure time
ascdsver	8.4.5	Processing system revision	ontime	13043.200012133	Sum of GTIs [s]
caldbver	4.5.1.1	 	ontime2	13039.959021971	Sum of GTIs [s]
date	2012-09-24T09:51:43	Date and time of file creation	ontime3	13043.200012133	Sum of GTIs [s]
revision	3	Processing version of data	ontime5	13043.200012133	Sum of GTIs [s]
			ontime6	13043.200012133	Sum of GTIs [s]
			ontime7	13043.200012133	Sum of GTIs [s]
			ontime8	13043.200012133	Sum of GTIs [s]
			l1events	677957	Number of level 1 events

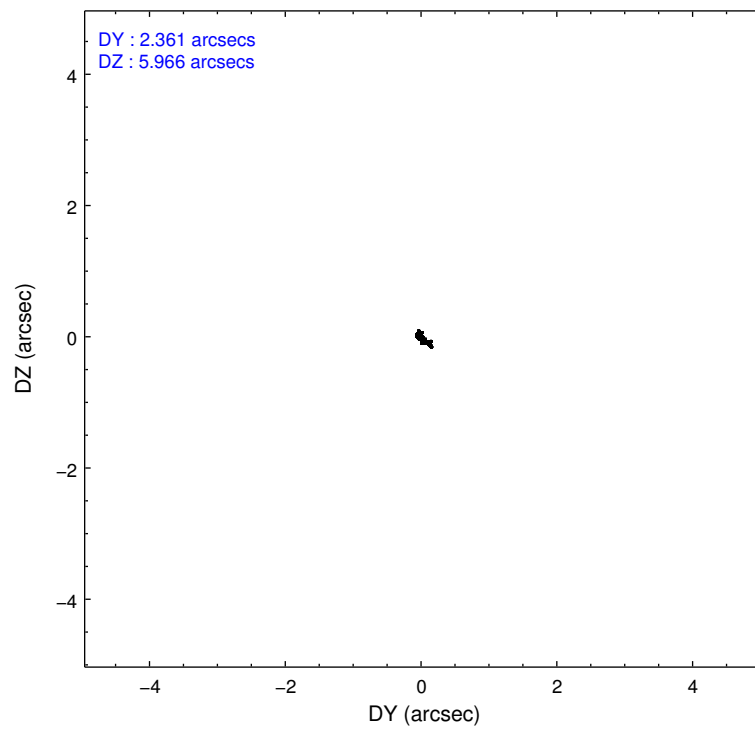
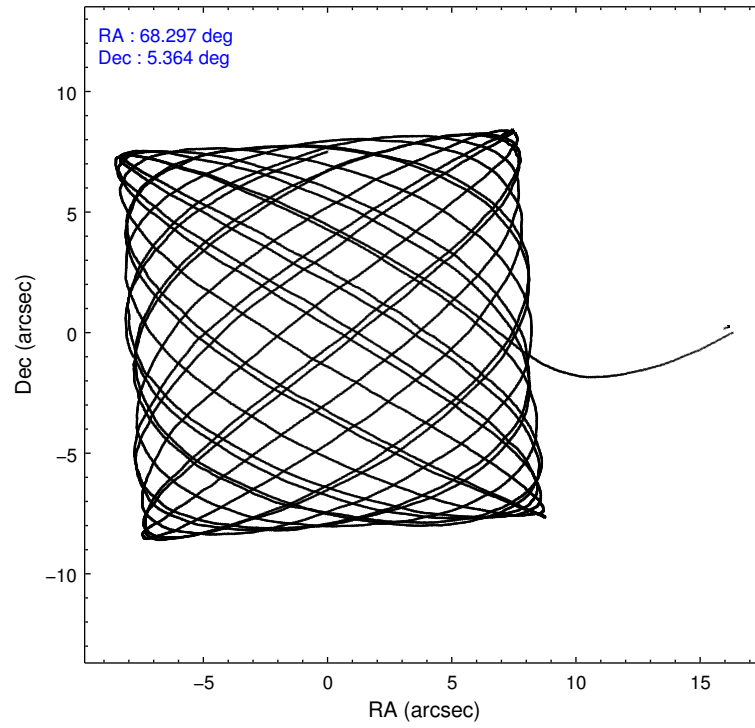
2.1.4 Events

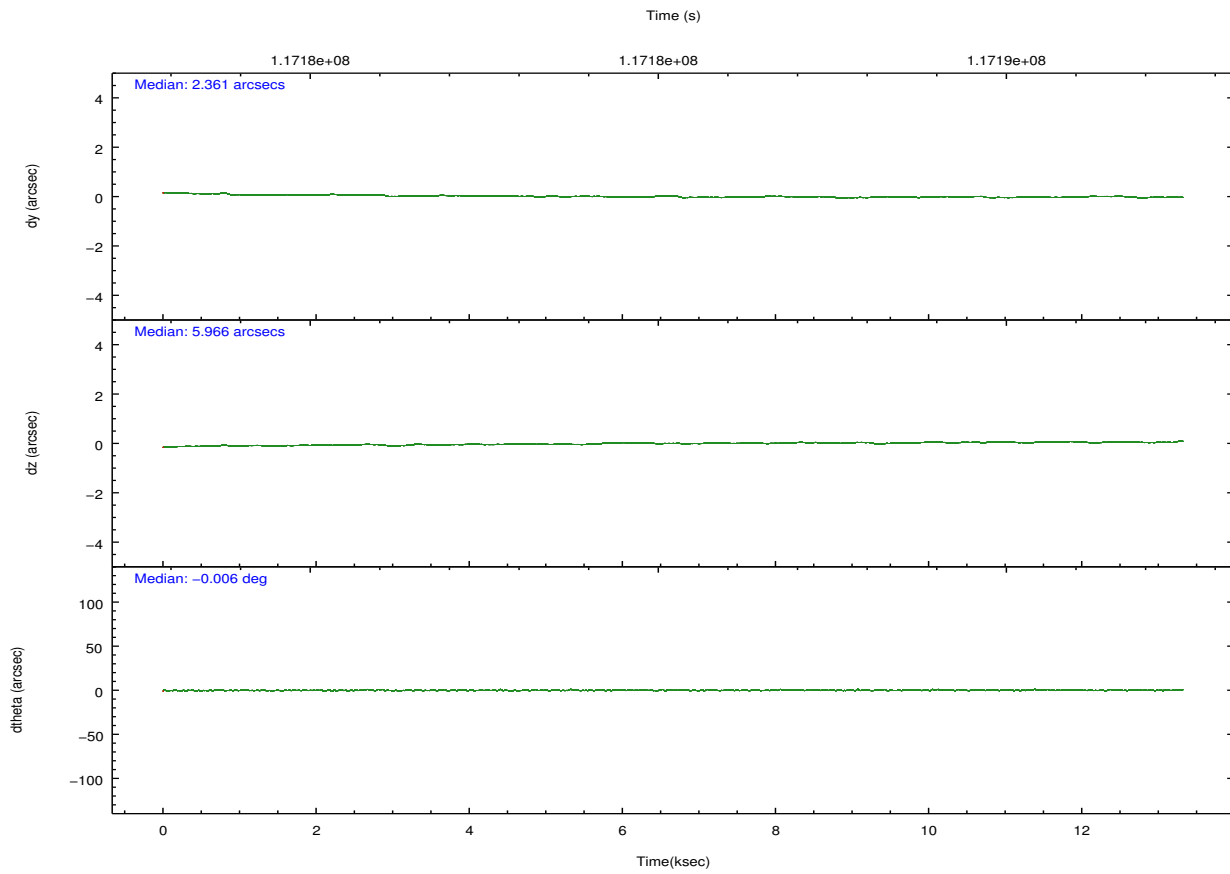
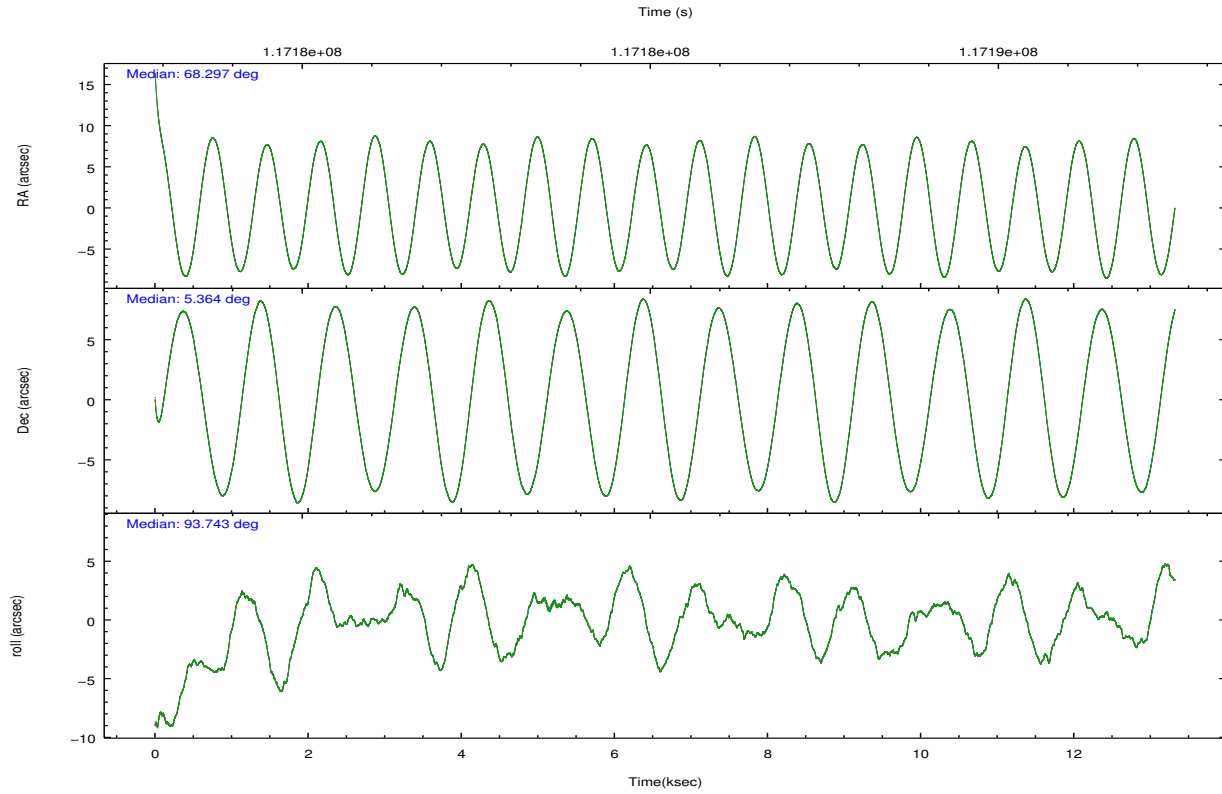
	ccd 2	ccd 3	ccd 5	ccd 6	ccd 7	ccd 8		ccd 2	ccd 3	ccd 5	ccd 6	ccd 7	ccd 8
level 1 events	90002	85676	156343	86826	150543	108567	grade 0 events	4579	4443	15538	5056	12108	7647
rejected events	79513	75767	68551	75720	64719	85541		5%	5%	9%	5%	8%	7%
rejected %	88%	88%	43%	87%	42%	78%	grade 1 events	41	30	788	41	235	61
								0%	0%	0%	0%	0%	0%
							grade 2 events	2186	1904	24258	2102	17470	4766
								2%	2%	15%	2%	11%	4%
							grade 3 events	961	930	4531	985	8070	2368
								1%	1%	2%	1%	5%	2%
							grade 4 events	939	902	4542	986	7760	2290
								1%	1%	2%	1%	5%	2%
							grade 5 events	3061	3374	9492	3611	11089	4704
								3%	3%	6%	4%	7%	4%
							grade 6 events	1827	1731	38949	1982	40437	5959
								2%	2%	24%	2%	26%	5%
							grade 7 events	76408	72362	58245	72063	53374	80772
								84%	84%	37%	82%	35%	74%

2.2 Compared Parameters

Parameter	Planned	Actual	Parameter	Planned	Actual
Instrument	ACIS	ACIS	Obspar format version number	7	7
Detector	ACIS-235678	ACIS-235678	Obspar file type	PREDICTED	ACTUAL
Grating	NONE	NONE	Obspar update status	NONE	UPDATED
Data mode	VFAINT	VFAINT	Number of optional ACIS chips dropped	0	0
Observation mode	POINTING	POINTING	On-chip summing requested	N	N
[deg] Pointing RA	68.312818	68.29734099372133	Subarray requested	NONE	NONE
[deg] Pointing Dec	5.341505	5.364026474566476	Alternating exposures requested	N	N
[deg] Pointing Roll	93.587152	93.74522540730675	[s] Primary exposure time	0.000000	3.2
[mm] SIM focus pos	-0.684267	-0.6828225247311905			
[mm] SIM defocus	0	0.001444936568705701			
[mm] SIM translation stage pos	-190.132523	-190.1400660498719			
[mm] SIM translation stage offset	0	0.00754346686406393			
[s] Observation start time (MET)	117178778.184000	117177787.87596			
Observation start date	2001-09-18T05:38:34	2001-09-18T05:23:07			
[s] Observation end time (MET)	117191874.184000	117192189.12653			
Observation end date	2001-09-18T09:16:50	2001-09-18T09:23:09			
Read mode	TIMED	TIMED			

2.3 Aspect



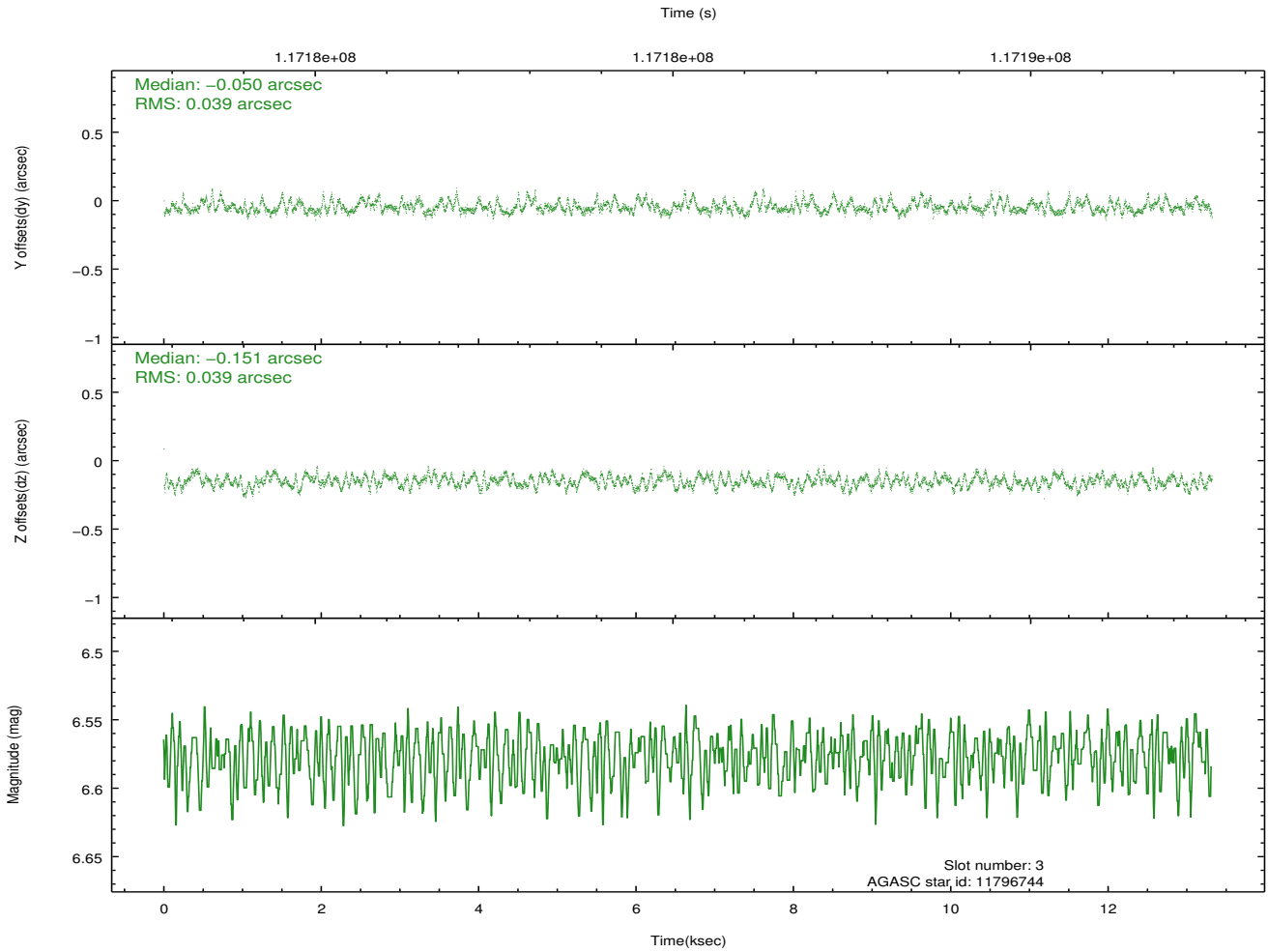
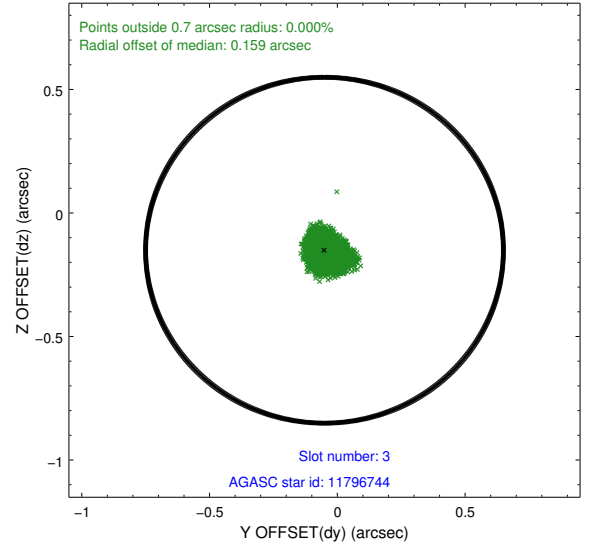
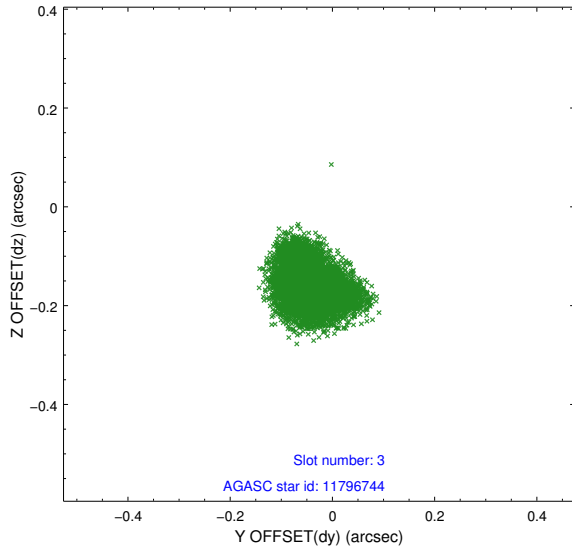


Slot Statistics

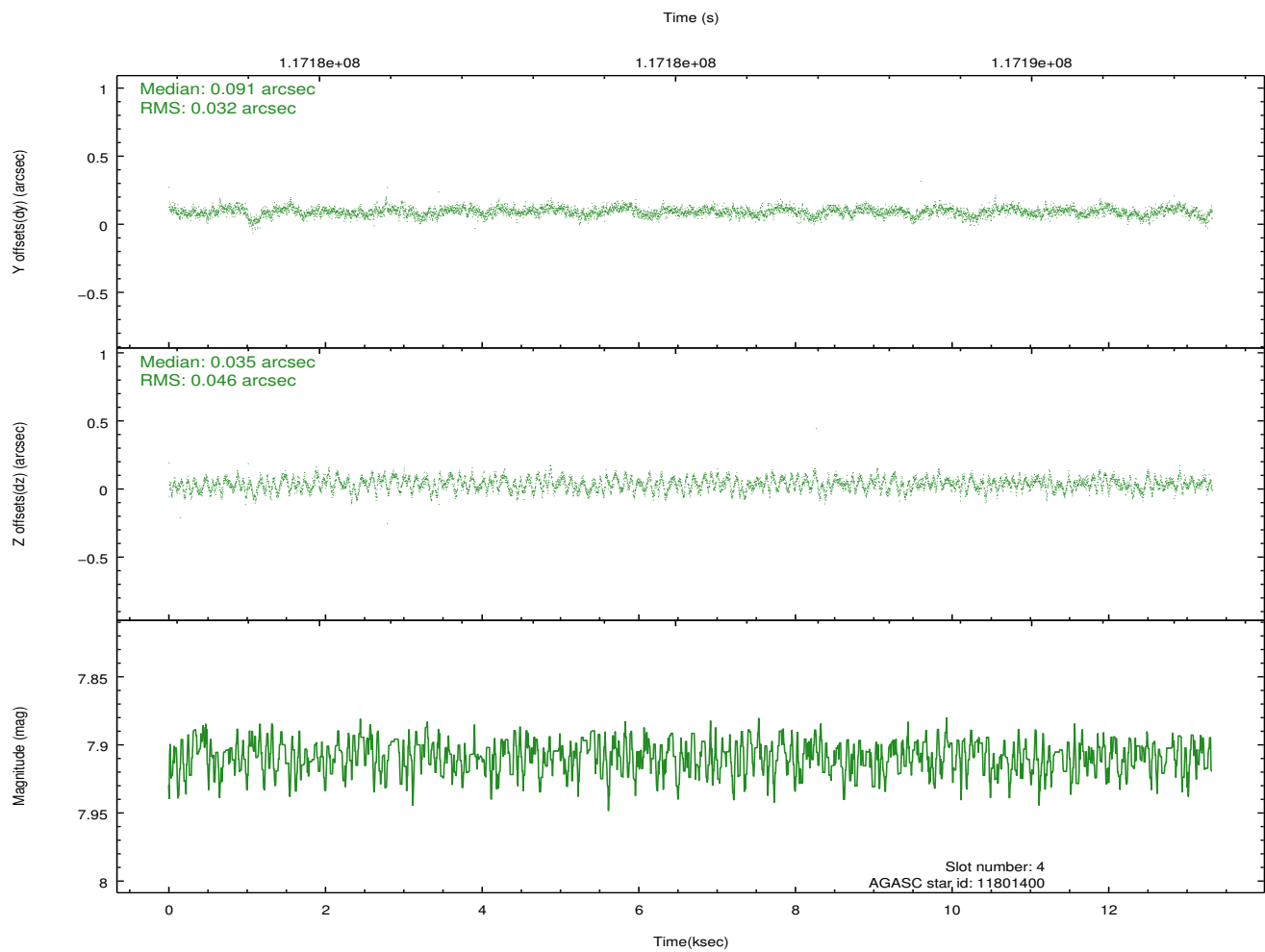
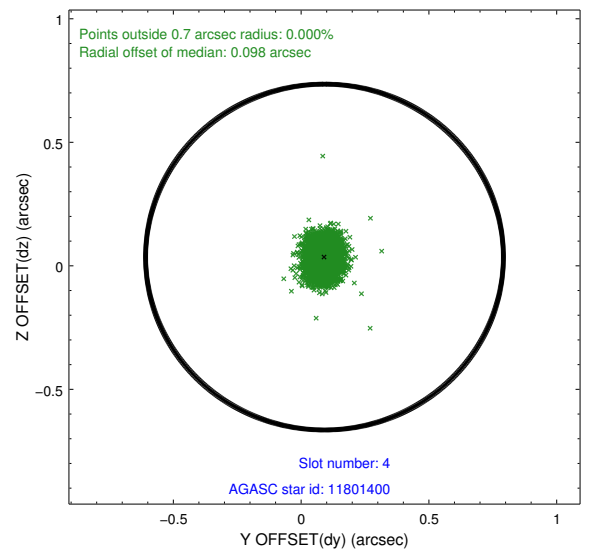
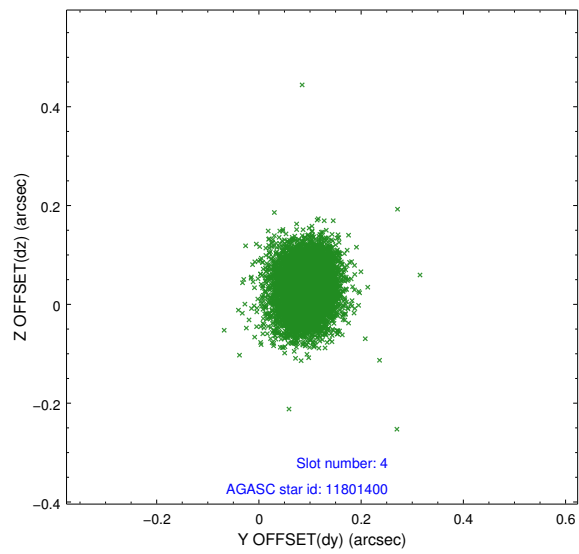
slot	status	id	mag	n_pts	med_dy	med_dz	dr1	dr2	ra	dec	mean_y	mean_z
0	FID	ACIS-S-2	7.12	3249	-0.046	-0.008	0.006	0.010	0.000000	0.000000	-755.00	-1727.12
1	FID	ACIS-S-4	7.20	3246	-0.017	0.024	0.005	0.011	0.000000	0.000000	2158.10	181.10
2	FID	ACIS-S-5	7.24	3248	0.031	-0.008	0.006	0.011	0.000000	0.000000	-1807.35	175.05
3	GUIDE	11796744	6.58	6497	-0.050	-0.151	0.059	0.093	68.020033	5.410032	311.46	1031.23
4	GUIDE	11801400	7.91	6498	0.091	0.035	0.059	0.096	68.459989	5.385023	122.56	-536.13
5	GUIDE	12327088	8.61	6434	-0.262	-0.210	0.057	0.091	67.823561	5.844308	1916.04	1635.12
6	GUIDE	11798168	8.73	6497	0.222	0.150	0.063	0.102	68.723067	4.993277	-1342.77	-1390.00
7	GUIDE	11798712	9.00	6495	-0.005	0.176	0.071	0.117	68.421522	5.061327	-1031.78	-326.30

2.4 Star Slots

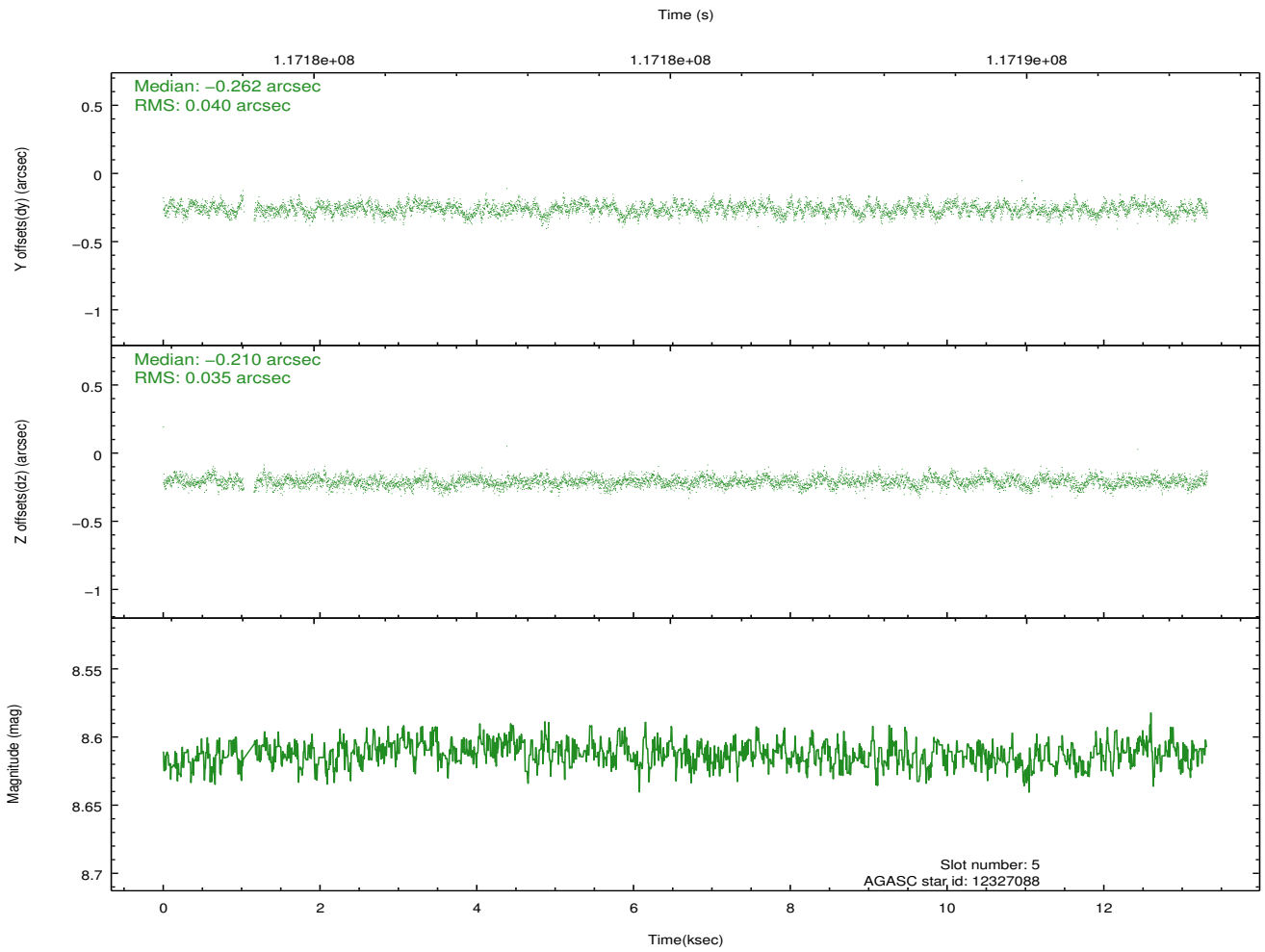
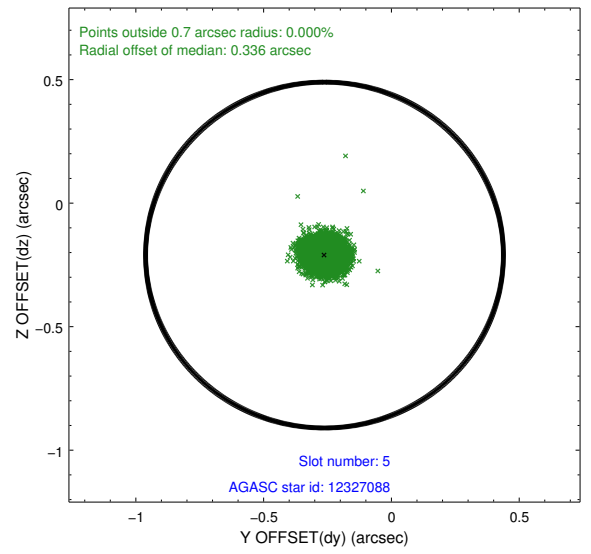
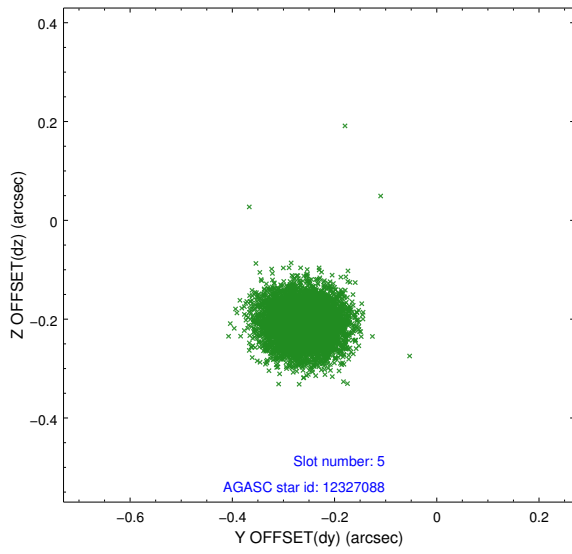
2.4.1 Slot 3



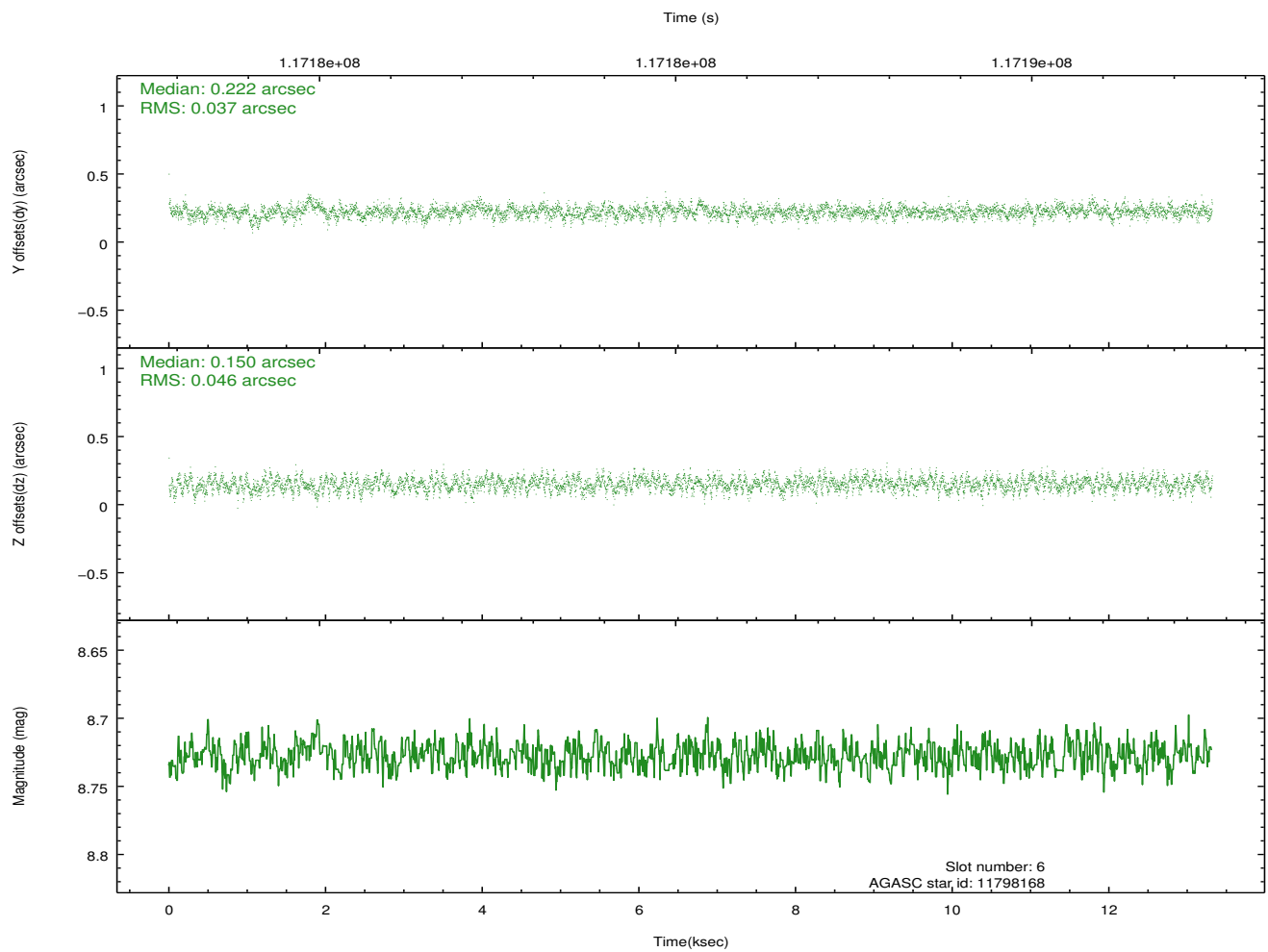
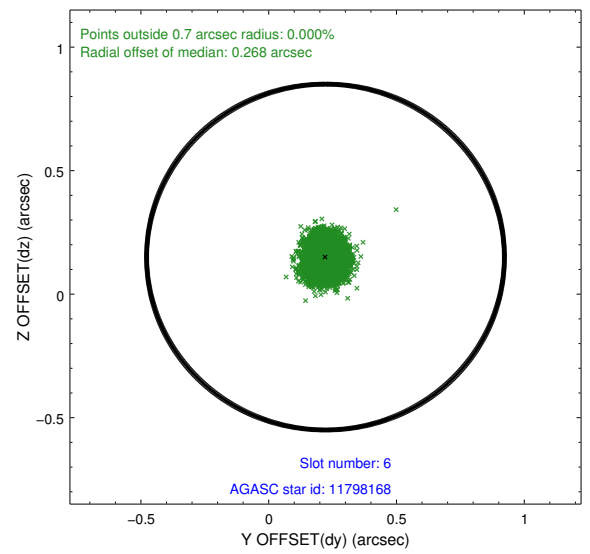
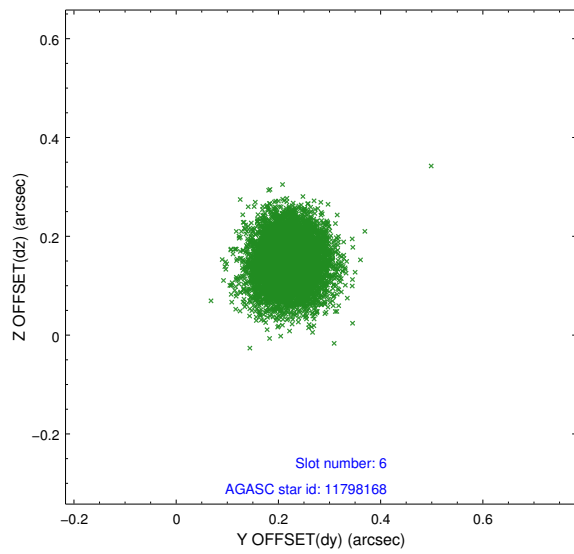
2.4.2 Slot 4



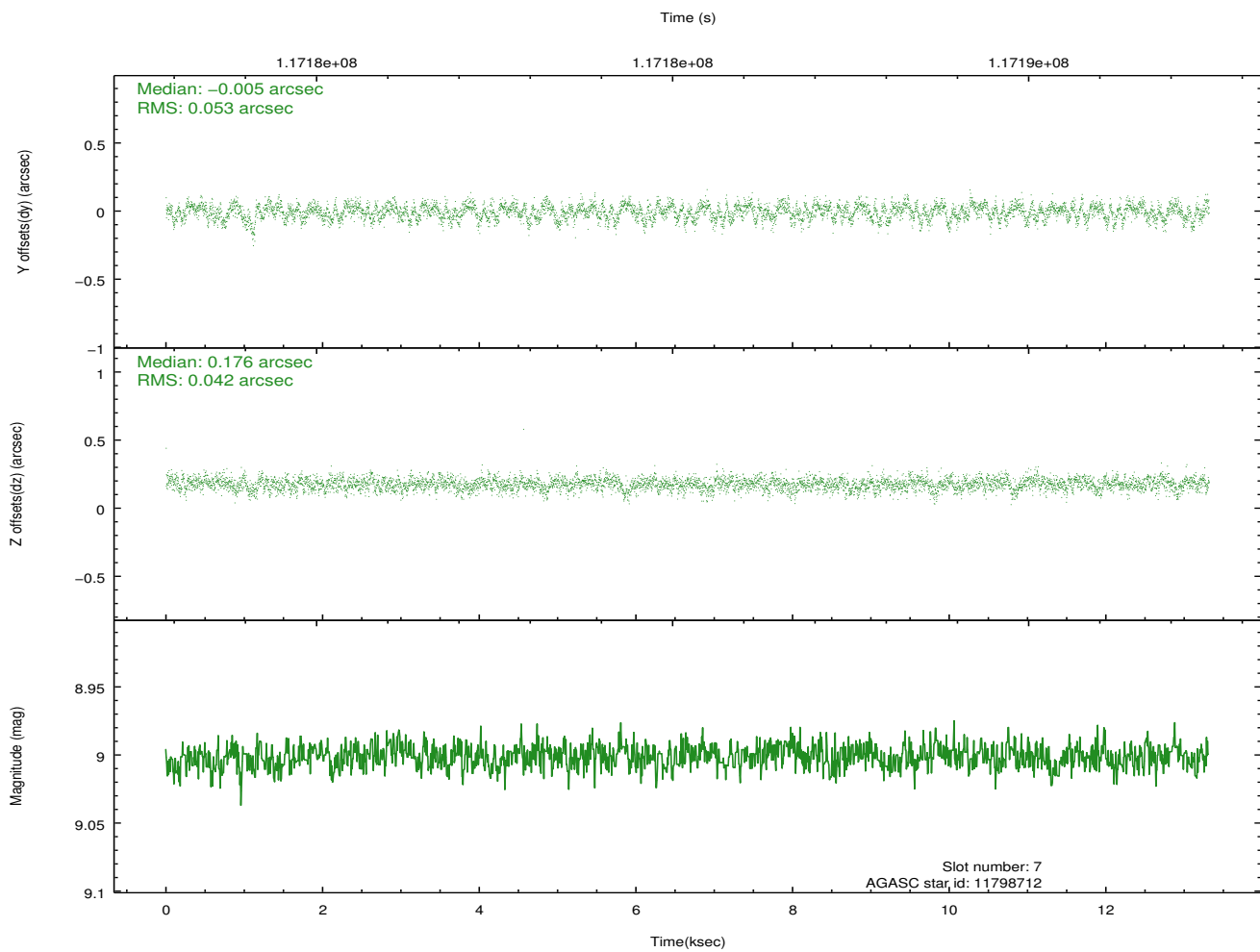
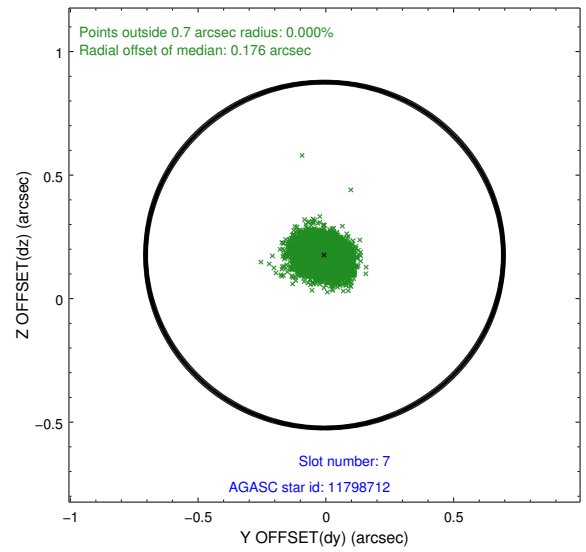
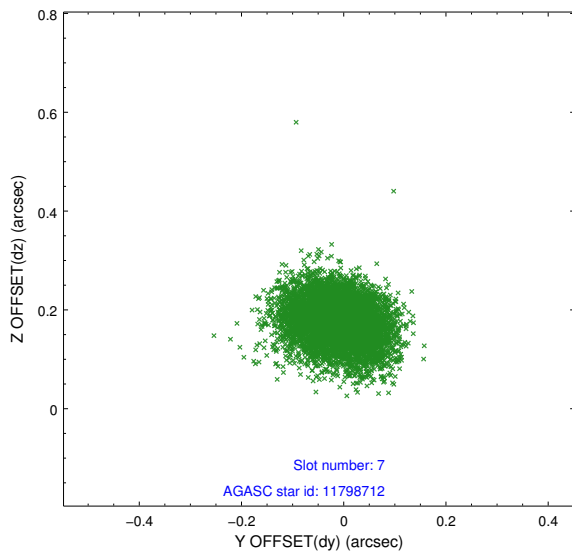
2.4.3 Slot 5



2.4.4 Slot 6

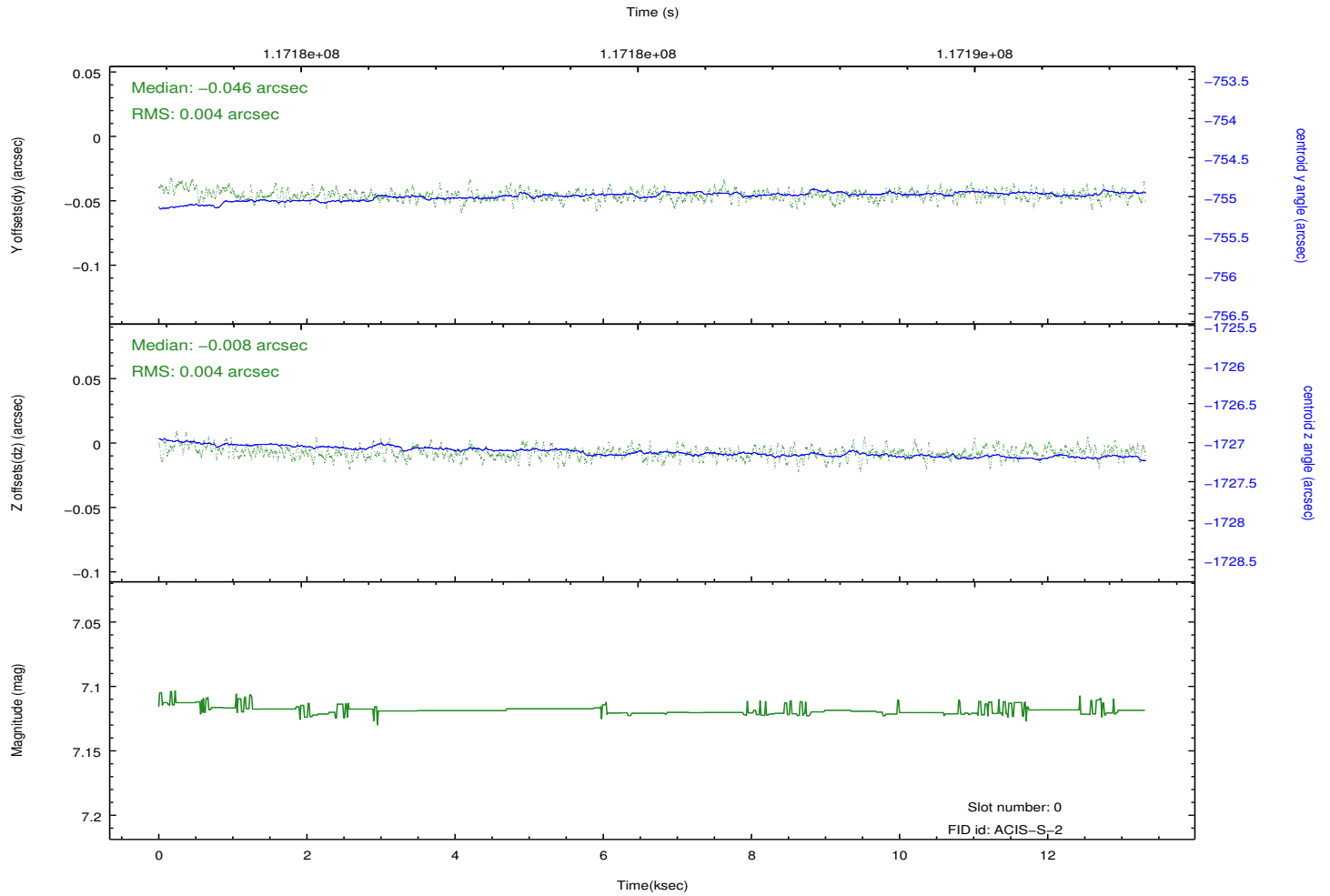
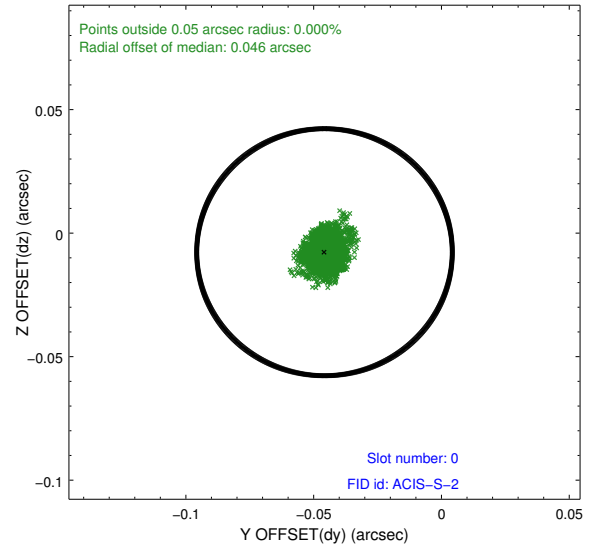
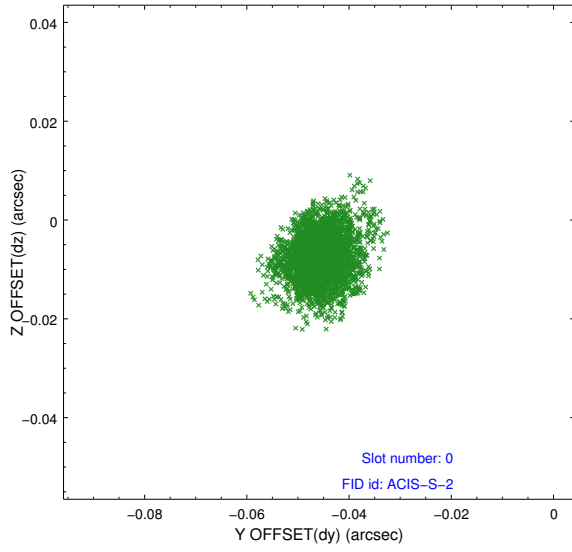


2.4.5 Slot 7

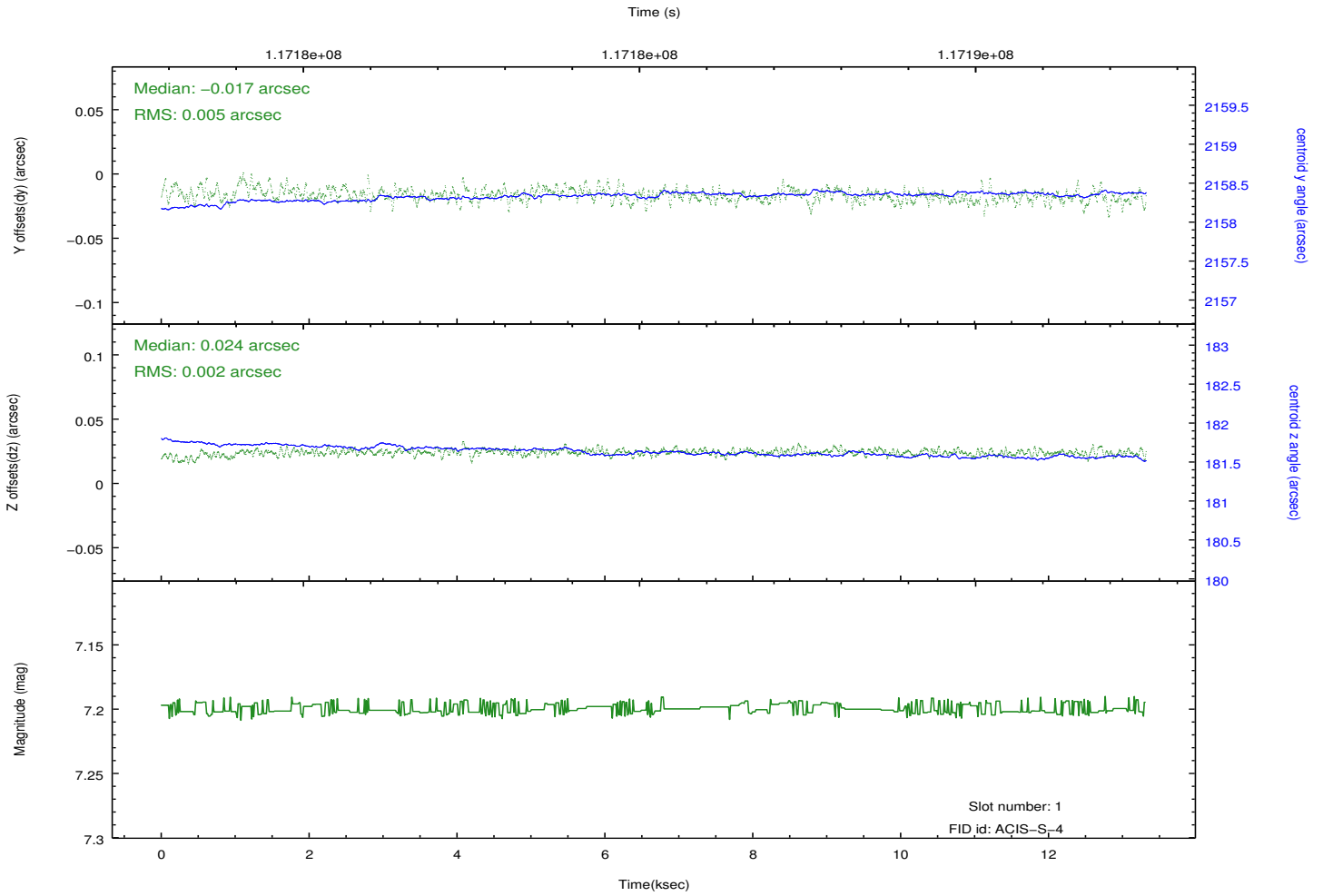
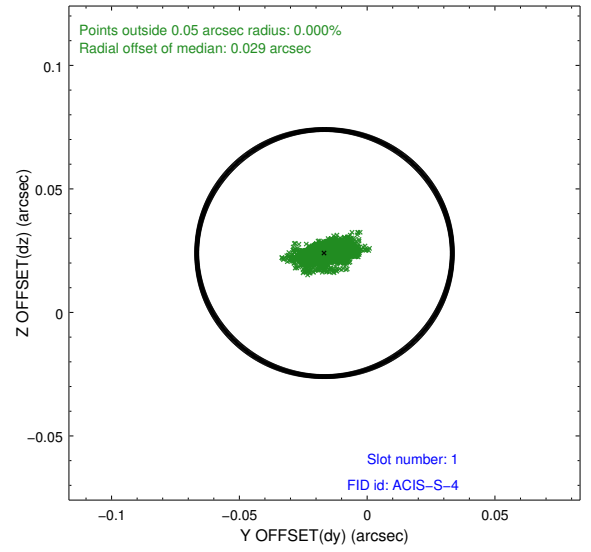
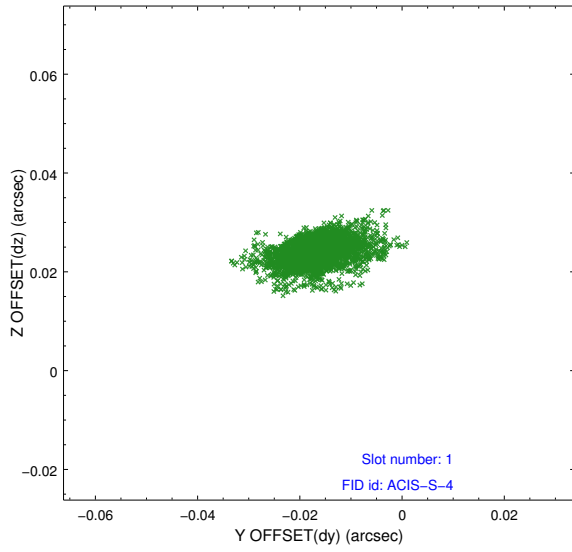


2.5 FID Slots

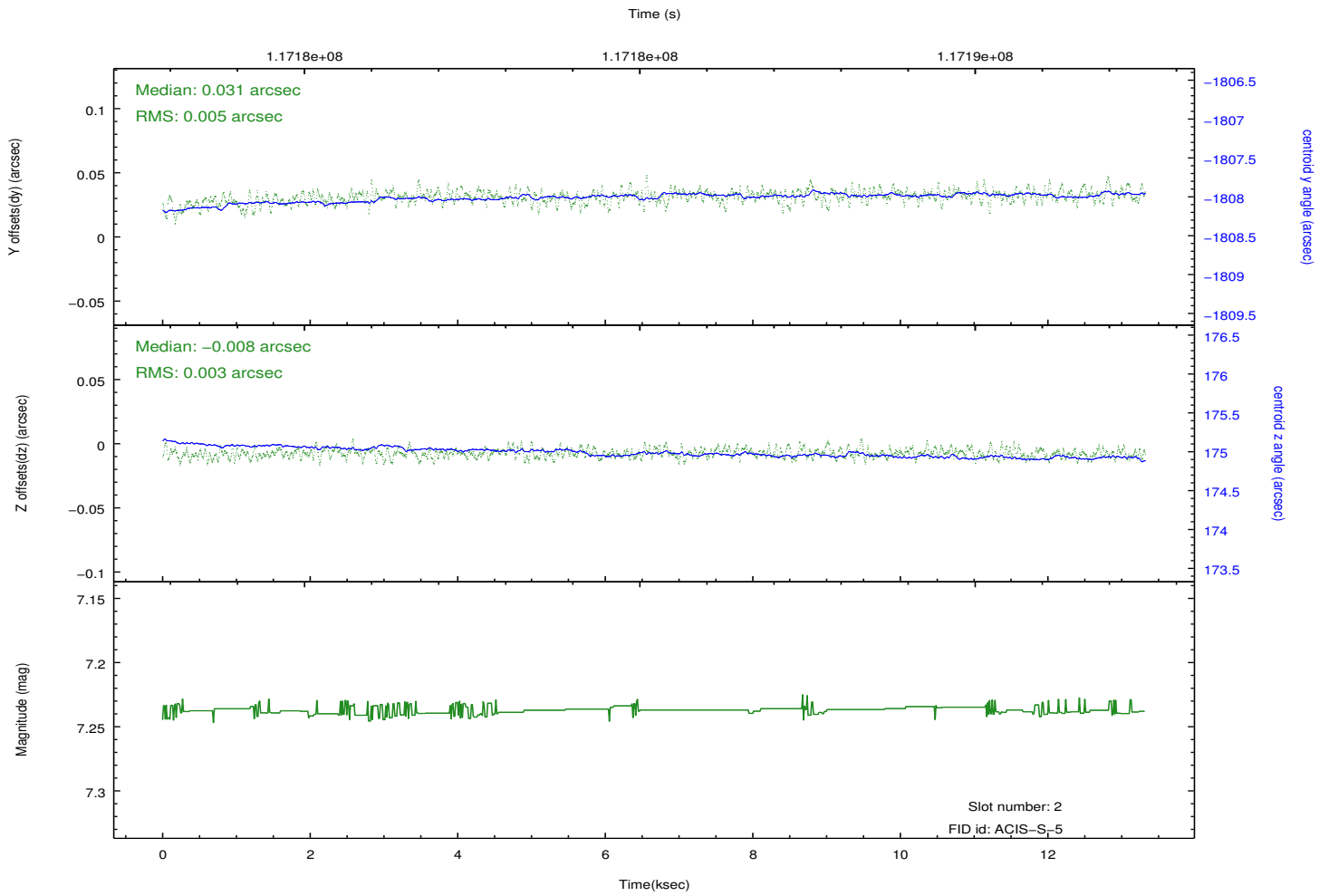
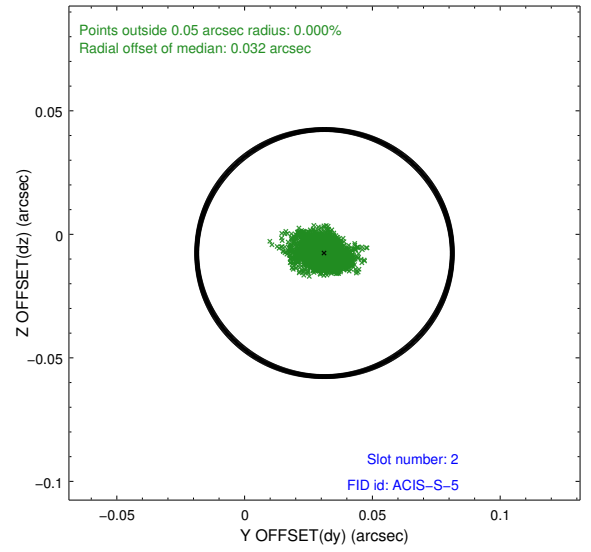
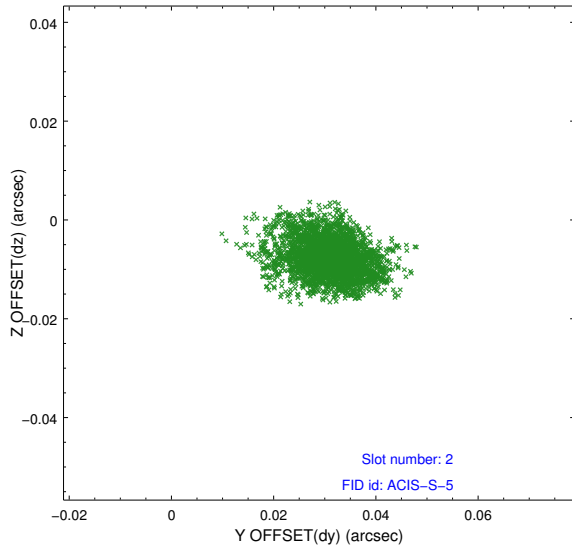
2.5.1 Slot 0



2.5.2 Slot 1



2.5.3 Slot 2



A Summary

A.1 Status

V&V Scientist	Jen Lauer
V&V Date (YYYY-MM-DD)	2012.09.26
V&V Edition	1
V&V Disposition and Status	OK
V&V Charge Time	13.046

A.2 Comments