

V&V Reference Report

L2 ASCDS Version : 8.4.5

Observation 1623 - L2 Version 3
Chandra X-Ray Center

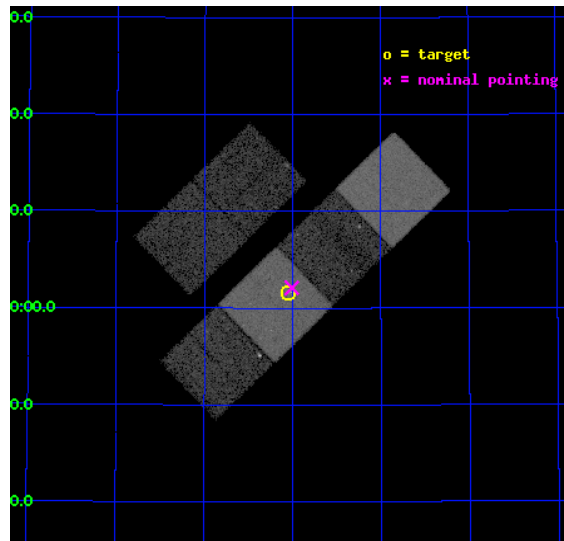
L2 Processing Date : Sep 14 2012

Contents

1	Front	2
2	OBI	3
2.1	OBI	3
2.1.1	Images	3
2.1.2	Bias	3
2.1.3	Parameters	4
2.1.4	Events	4
2.2	Compared Parameters	5
2.3	Aspect	6
2.4	Star Slots	9
2.4.1	Slot 3	9
2.4.2	Slot 4	10
2.4.3	Slot 5	11
2.4.4	Slot 6	12
2.4.5	Slot 7	13
2.5	FID Slots	14
2.5.1	Slot 0	14
2.5.2	Slot 1	15
2.5.3	Slot 2	16
A	Summary	17
A.1	Status	17
A.2	Comments	17

1 Front

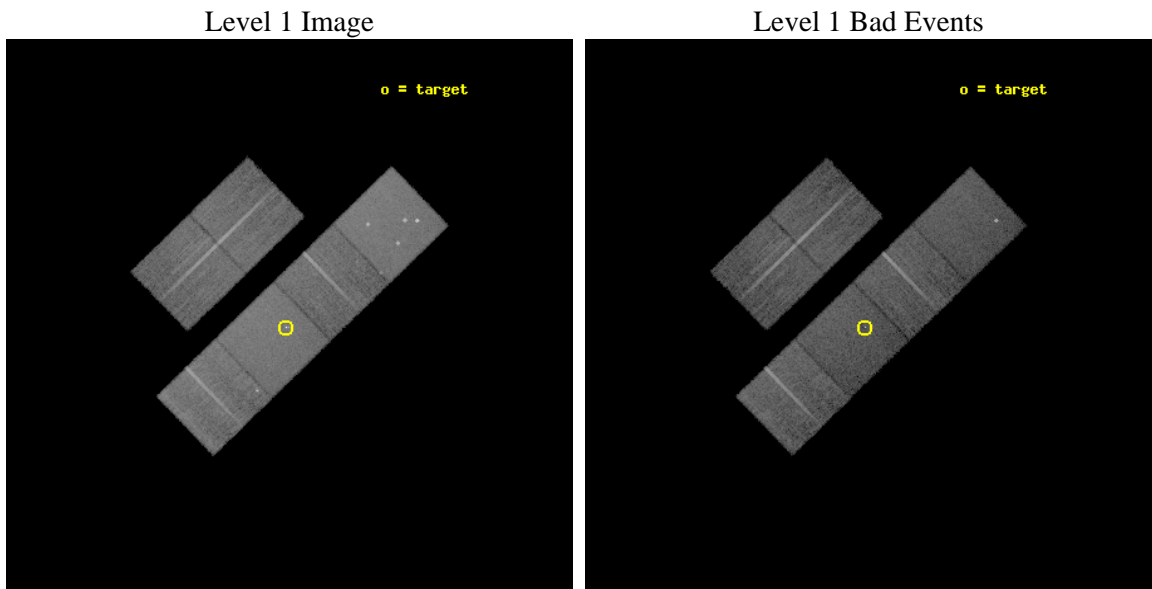
seq_num	700239	Sequence number
obs_id	1623	Observation id
title	STUDIES OF RADIO JETS AND THE NARROW LINE REGIONS OF ACTIVE GALAXIES	
observer	Professor Andrew Wilson	Principal investigator
object	3C303	Source name
dtcycle	0	
cycle	P	events from which exps? Prim/Second/Both
ra_targ	220.761667	Observer's specified target RA [deg]
dec_targ	52.027028	Observer's specified target Dec [deg]
ra_nom	220.75232952896	Nominal RA [deg]
dec_nom	52.034992667711	Nominal Dec [deg]
roll_nom	135.89951145265	Nominal Roll [deg]
revision	3	Processing version of data
ontime	15142.400014088	Sum of GTIs [s]
livetime	14950.657827451	Livetime [s]
ontime2	15142.400014088	Sum of GTIs [s]
ontime3	15142.400014088	Sum of GTIs [s]
ontime5	15142.400014088	Sum of GTIs [s]
ontime6	15142.400014088	Sum of GTIs [s]
ontime7	15142.400014088	Sum of GTIs [s]
ontime8	15142.400014088	Sum of GTIs [s]
l2events	154749	Number of level 2 events



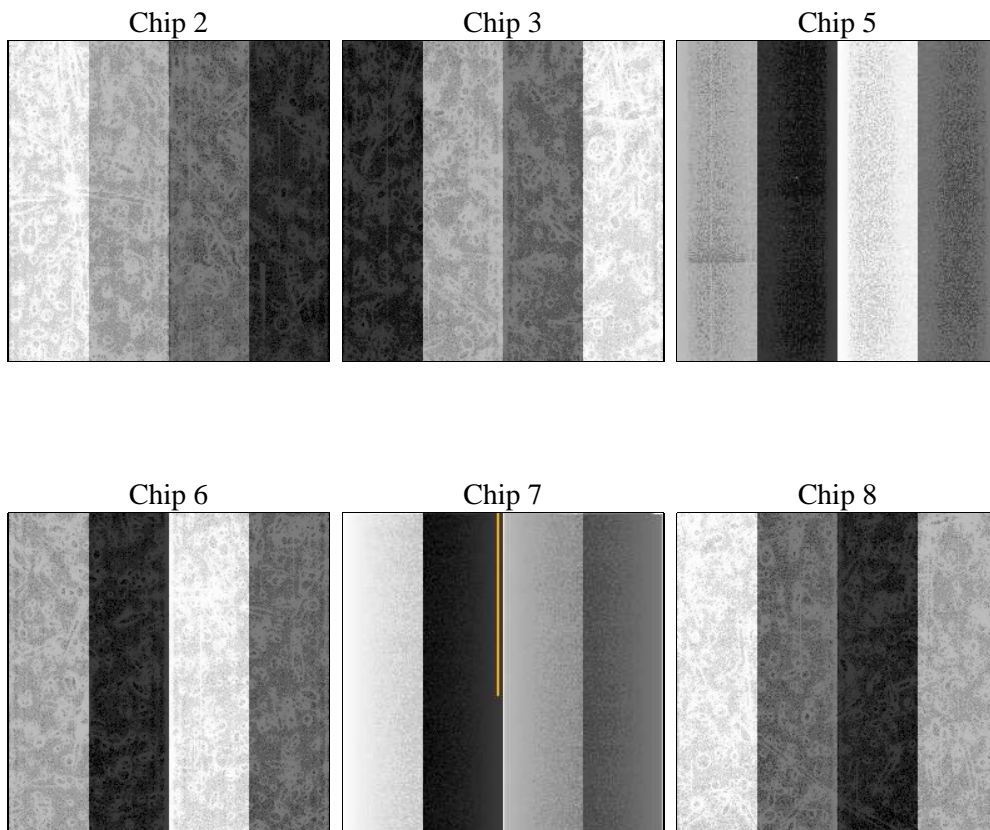
2 OBI

2.1 OBI

2.1.1 Images



2.1.2 Bias



2.1.3 Parameters

obi_num	0	Obi number	sched_exp_time	15000.000000	[s] Scheduled observation exposure time
ascdsver	8.4.5	Processing system revision	ontime	15142.400014088	Sum of GTIs [s]
caldbver	4.5.1.1	 	ontime2	15142.400014088	Sum of GTIs [s]
date	2012-09-14T05:57:40	Date and time of file creation	ontime3	15142.400014088	Sum of GTIs [s]
revision	3	Processing version of data	ontime5	15142.400014088	Sum of GTIs [s]
			ontime6	15142.400014088	Sum of GTIs [s]
			ontime7	15142.400014088	Sum of GTIs [s]
			ontime8	15142.400014088	Sum of GTIs [s]
			l1events	707038	Number of level 1 events

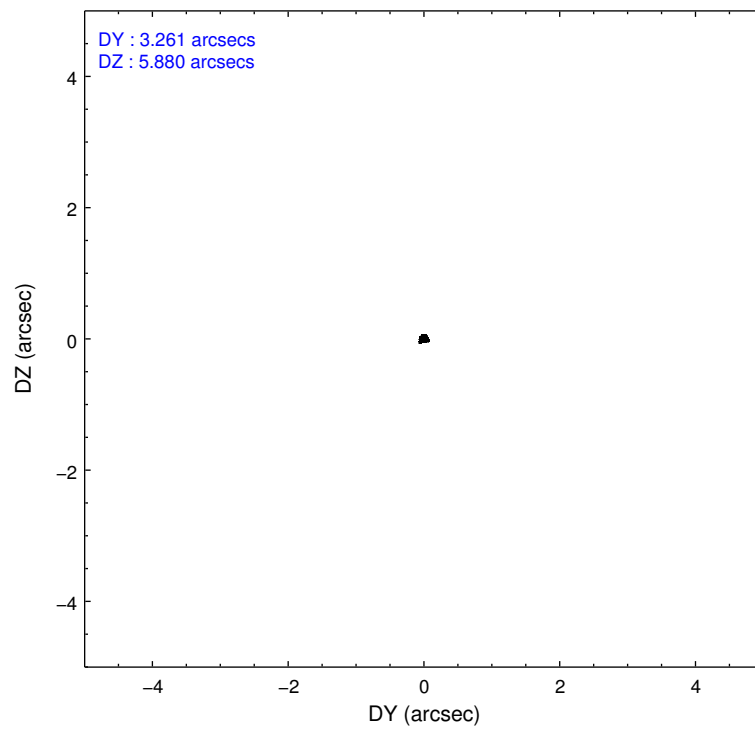
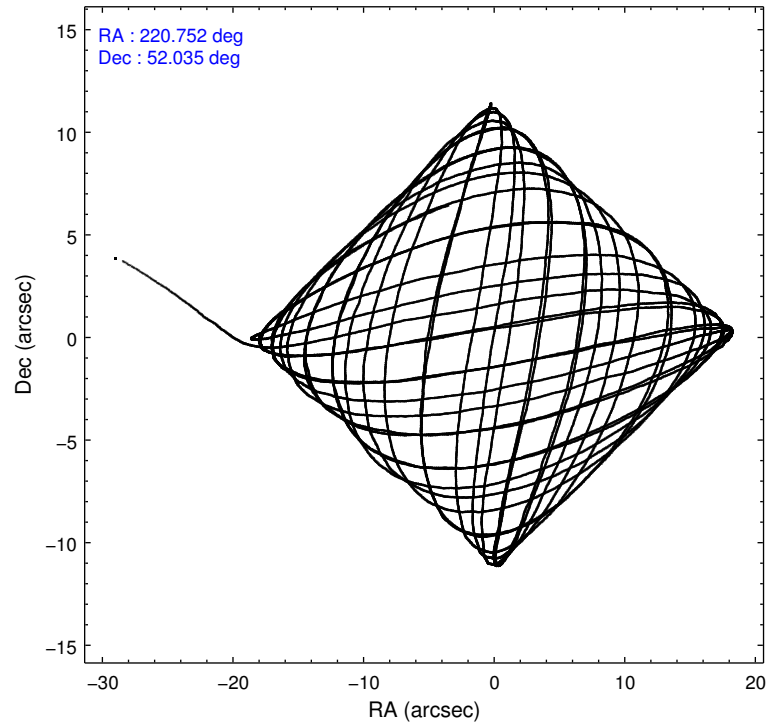
2.1.4 Events

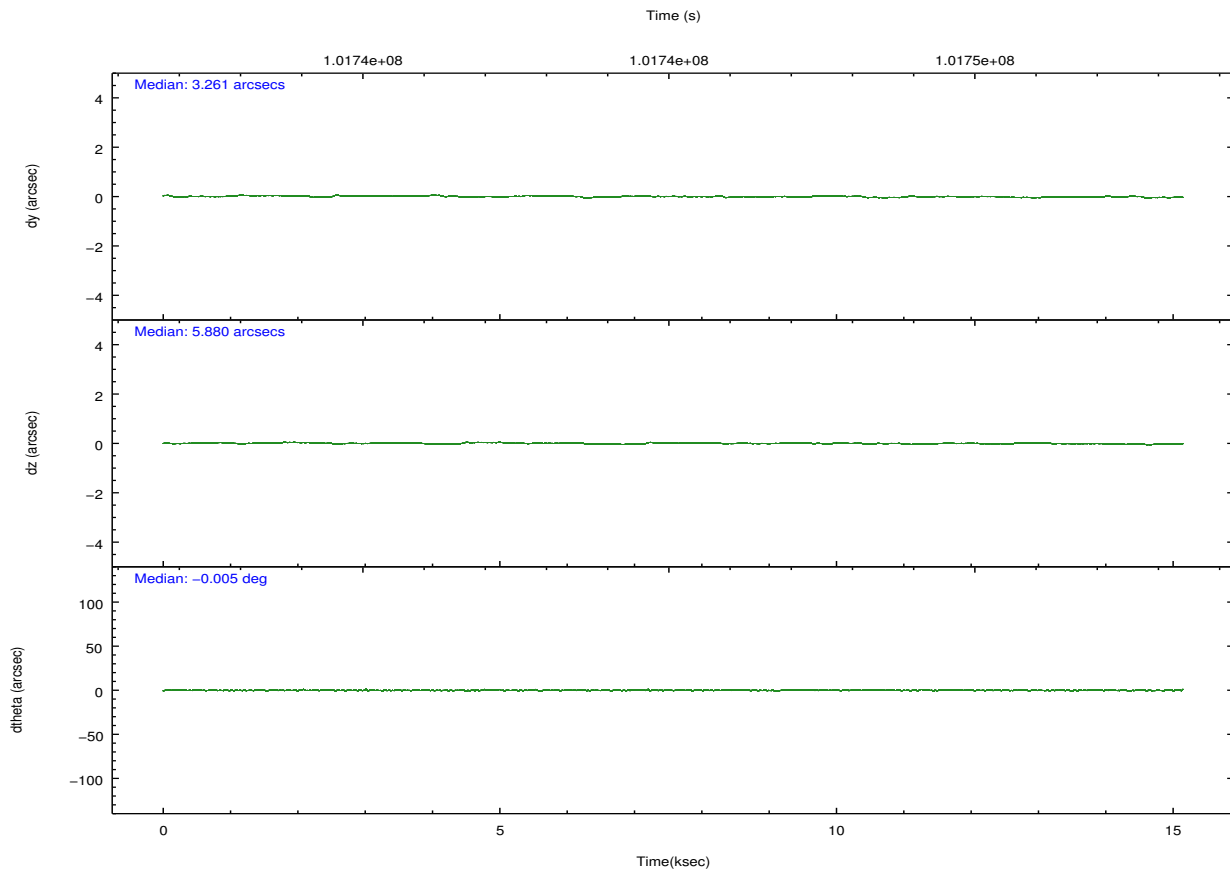
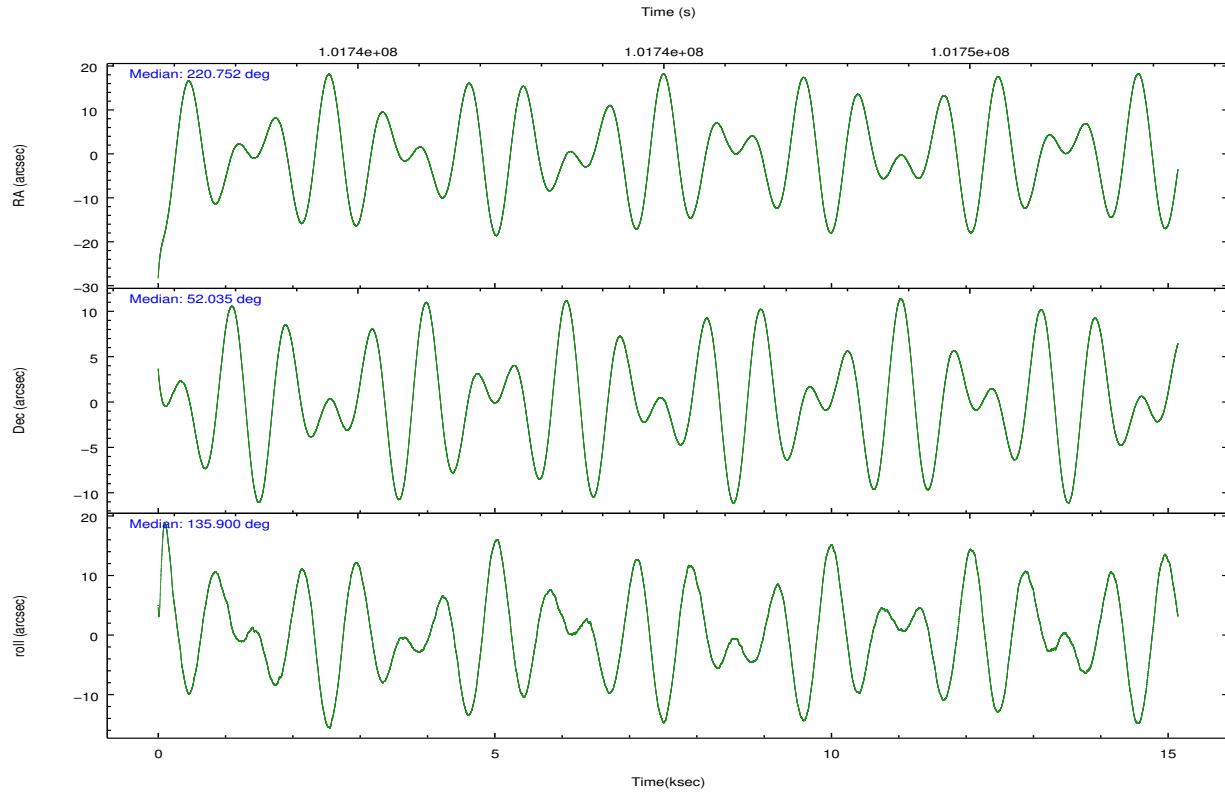
	ccd 2	ccd 3	ccd 5	ccd 6	ccd 7	ccd 8		ccd 2	ccd 3	ccd 5	ccd 6	ccd 7	ccd 8
level 1 events	101715	99686	143732	102120	132250	127535	grade 0 events	4653	4478	9293	4773	6202	8390
rejected events	90804	88999	77400	90622	75449	102735		4%	4%	6%	4%	4%	6%
rejected %	89%	89%	53%	88%	57%	80%	grade 1 events	50	46	182	54	224	72
								0%	0%	0%	0%	0%	0%
							grade 2 events	2365	2154	19130	2303	11401	5286
								2%	2%	13%	2%	8%	4%
							grade 3 events	972	1060	2727	1136	5247	2491
								0%	1%	1%	1%	3%	1%
							grade 4 events	1035	1132	2539	1119	5093	2359
								1%	1%	1%	1%	3%	1%
							grade 5 events	3440	3821	11540	4181	12538	5321
								3%	3%	8%	4%	9%	4%
							grade 6 events	1922	1904	32886	2224	29034	6362
								1%	1%	22%	2%	21%	4%
							grade 7 events	87278	85091	65435	86330	62511	97254
								85%	85%	45%	84%	47%	76%

2.2 Compared Parameters

Parameter	Planned	Actual	Parameter	Planned	Actual
Instrument	ACIS	ACIS	Obspar format version number	7	7
Detector	ACIS-235678	ACIS-235678	Obspar file type	PREDICTED	ACTUAL
Grating	NONE	NONE	Obspar update status	NONE	UPDATED
Data mode	VFAINT	VFAINT	Number of optional ACIS chips dropped	0	0
Observation mode	POINTING	POINTING	On-chip summing requested	N	N
[deg] Pointing RA	220.795534	220.7523295289578	Subarray requested	NONE	NONE
[deg] Pointing Dec	52.028597	52.03499266771107	Alternating exposures requested	N	N
[deg] Pointing Roll	135.708842	135.8995114526541	[s] Primary exposure time	0.000000	3.2
[mm] SIM focus pos	-0.684267	-0.6828225247311905			
[mm] SIM defocus	0	0.001444936568705701			
[mm] SIM translation stage pos	-190.132523	-190.1400660498719			
[mm] SIM translation stage offset	0	0.00754346686406393			
[s] Observation start time (MET)	101737642.184000	101736524.09758			
Observation start date	2001-03-23T12:26:18	2001-03-23T12:08:44			
[s] Observation end time (MET)	101752642.184000	101753502.71074			
Observation end date	2001-03-23T16:36:18	2001-03-23T16:51:42			
Read mode	TIMED	TIMED			

2.3 Aspect



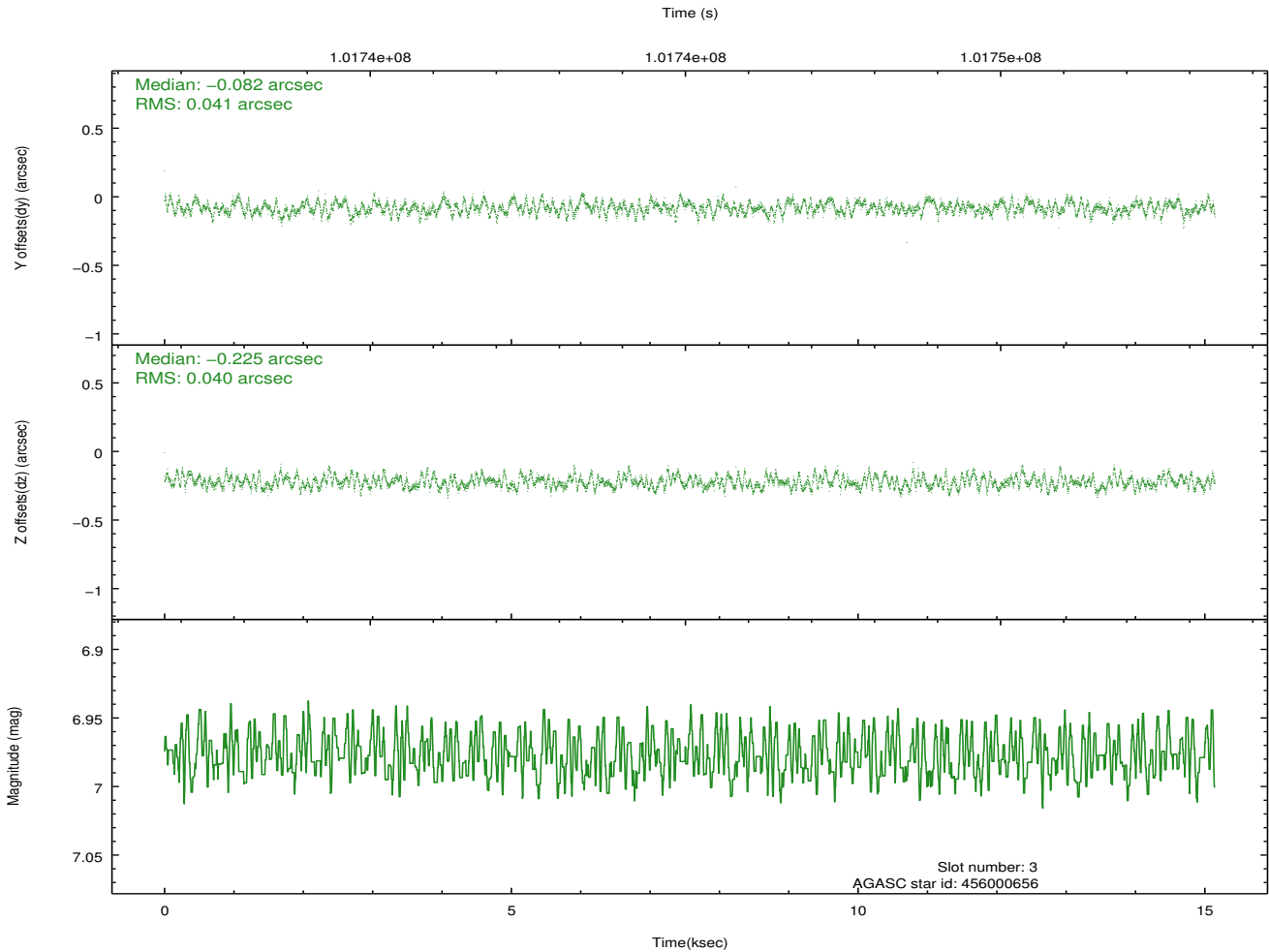
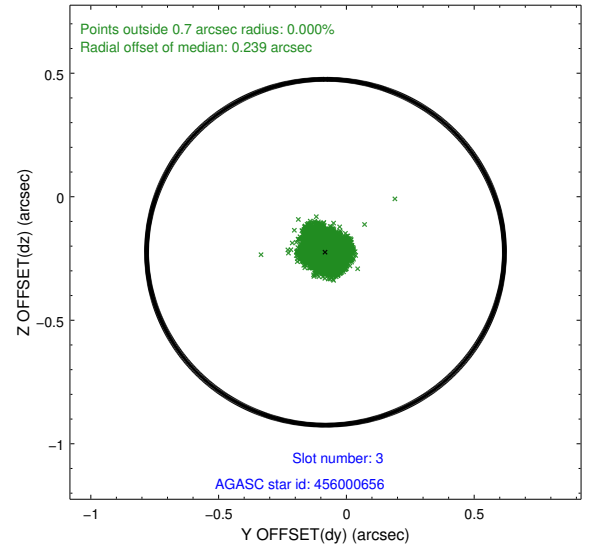
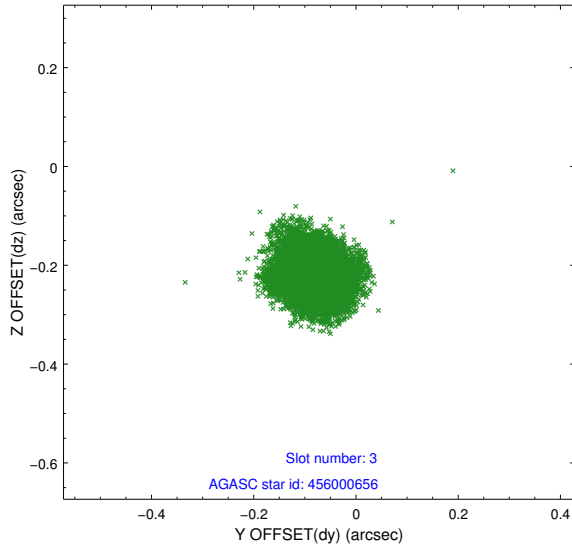


Slot Statistics

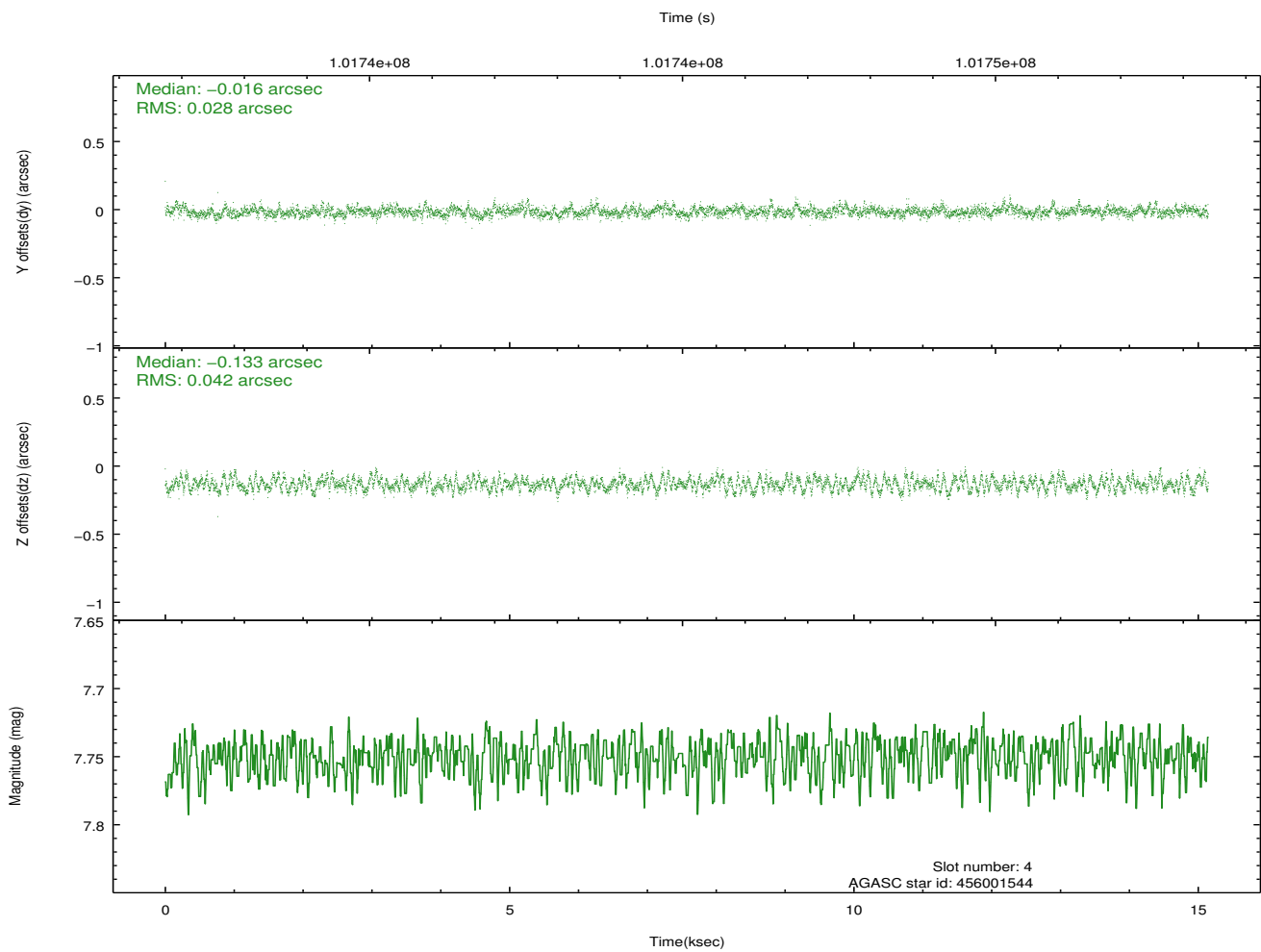
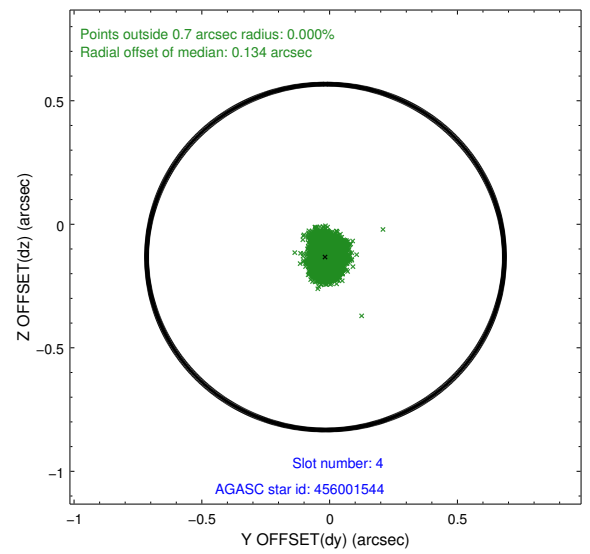
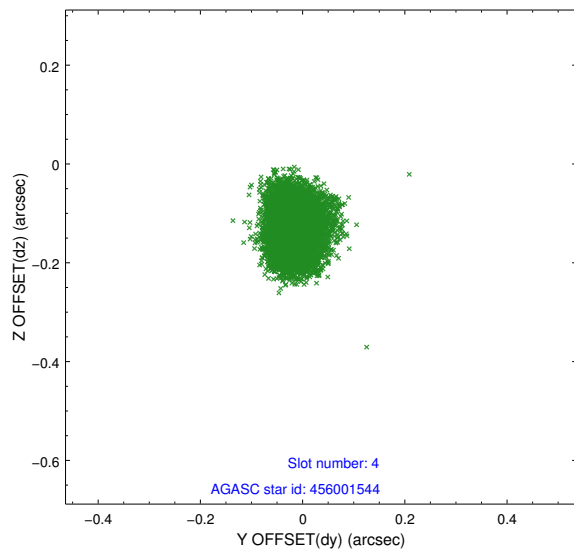
slot	status	id	mag	n_pts	med_dy	med_dz	dr1	dr2	ra	dec	mean_y	mean_z
0	FID	ACIS-S-2	7.12	3695	-0.026	0.008	0.007	0.011	0.000000	0.000000	-755.89	-1727.03
1	FID	ACIS-S-4	7.20	3695	-0.026	0.010	0.006	0.010	0.000000	0.000000	2157.20	181.22
2	FID	ACIS-S-5	7.24	3695	0.021	-0.009	0.006	0.011	0.000000	0.000000	-1808.35	175.12
3	GUIDE	456000656	6.98	7390	-0.082	-0.225	0.062	0.094	220.259574	52.235799	1369.15	287.23
4	GUIDE	456001544	7.75	7390	-0.016	-0.133	0.054	0.087	220.502950	52.005319	406.22	511.03
5	GUIDE	456007360	8.30	7390	0.027	-0.136	0.056	0.091	220.843042	51.918110	-353.47	210.20
6	GUIDE	505950048	8.62	7390	-0.012	0.307	0.074	0.118	220.336085	52.647026	2274.67	-895.55
7	GUIDE	456132624	8.89	7389	0.080	0.190	0.060	0.096	221.490564	51.626542	-2117.46	-54.54

2.4 Star Slots

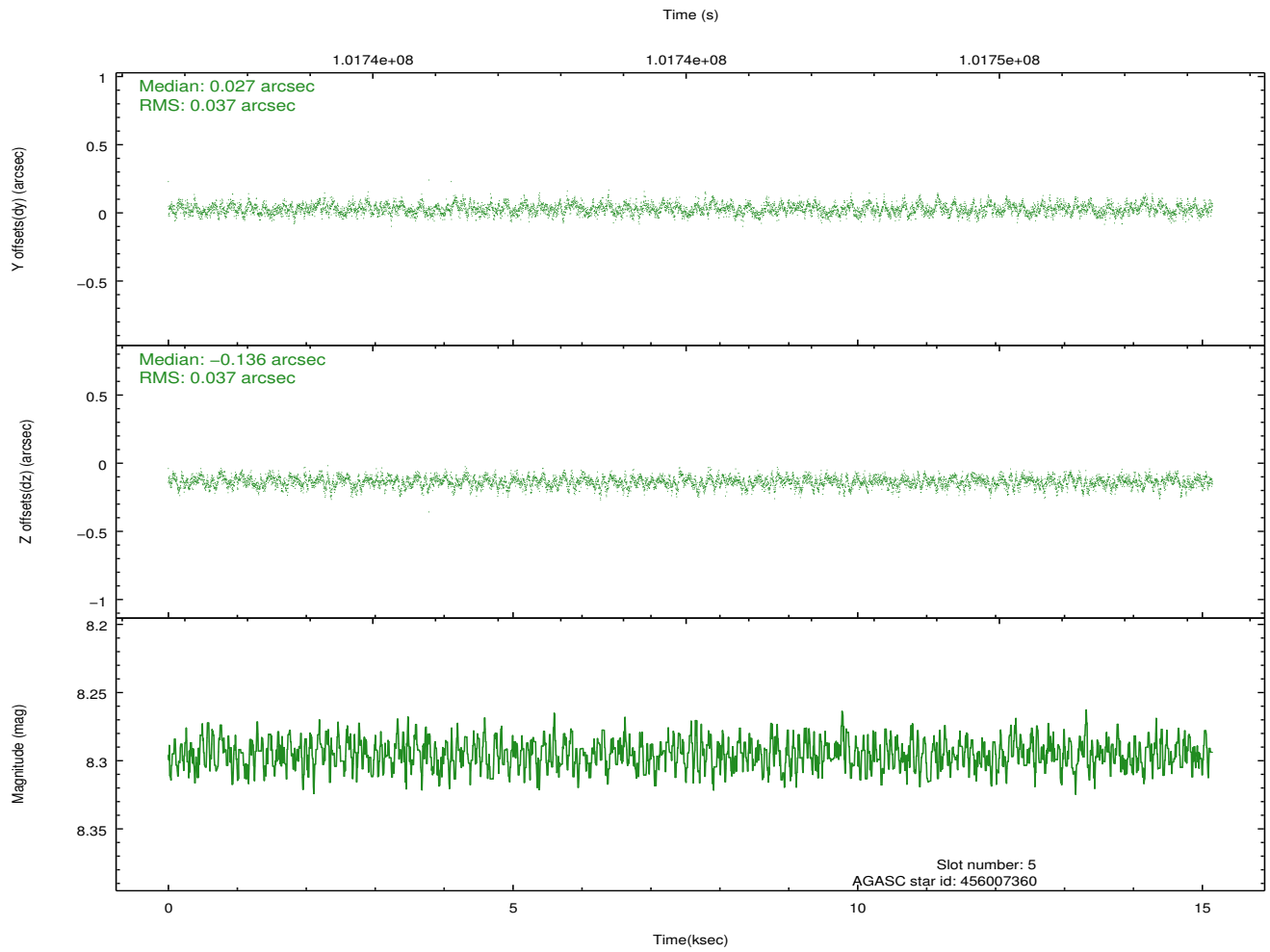
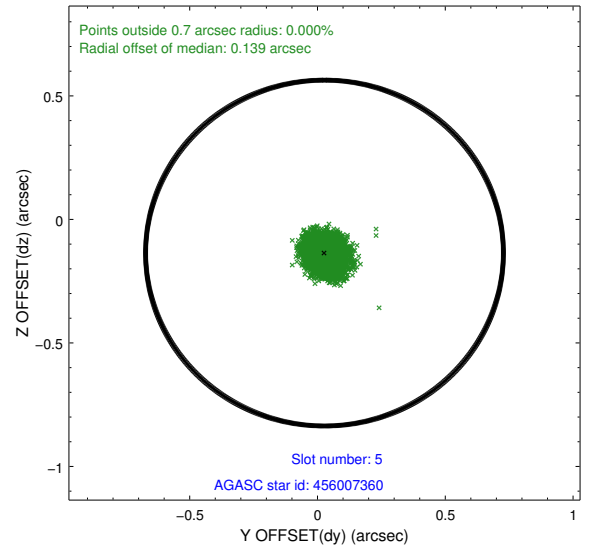
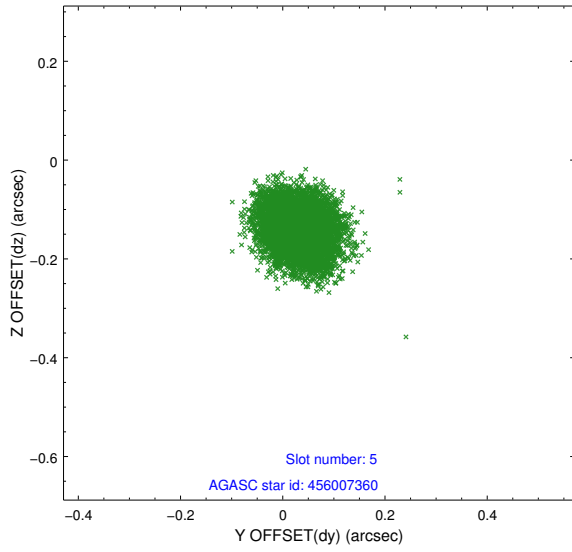
2.4.1 Slot 3



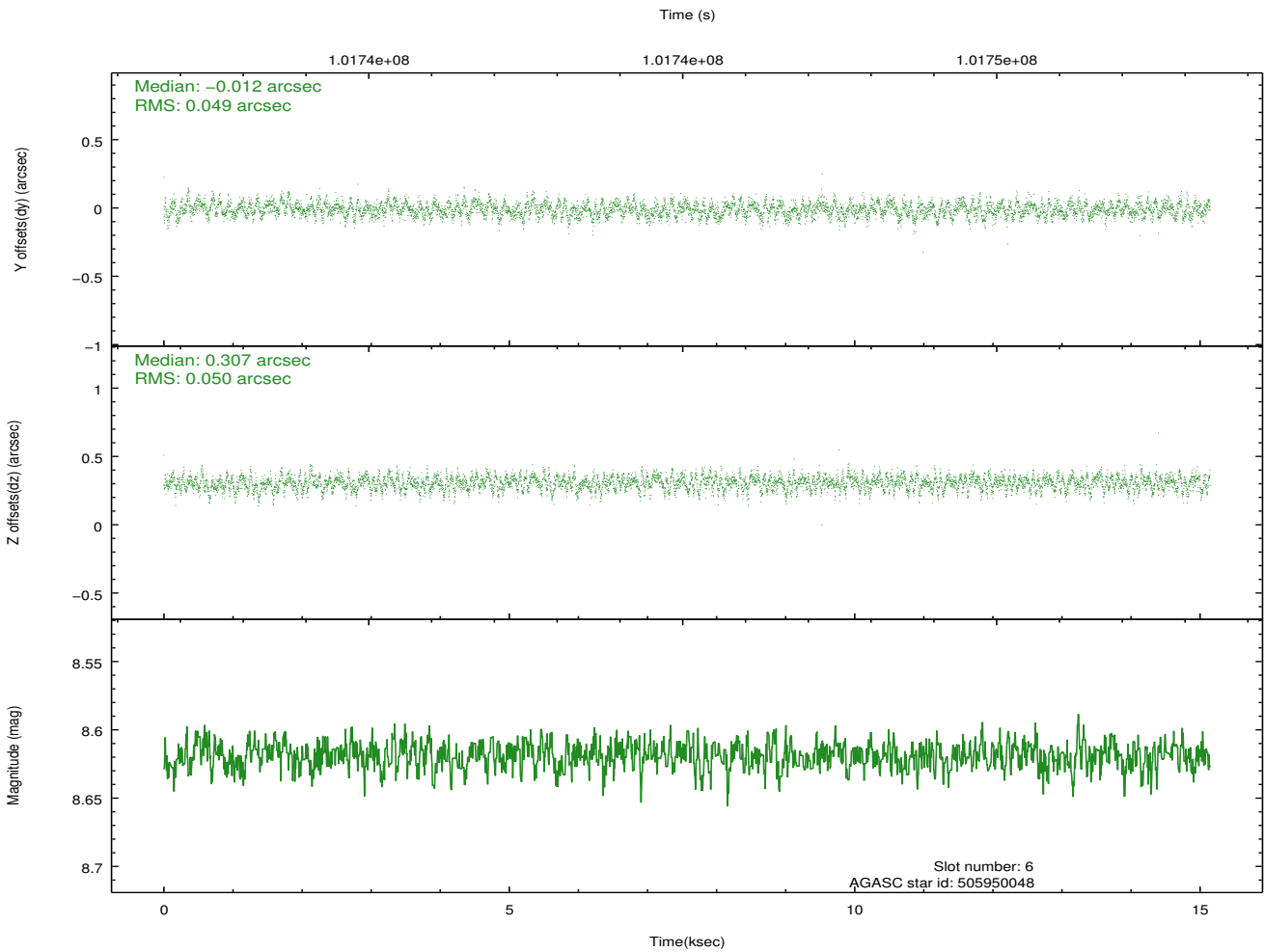
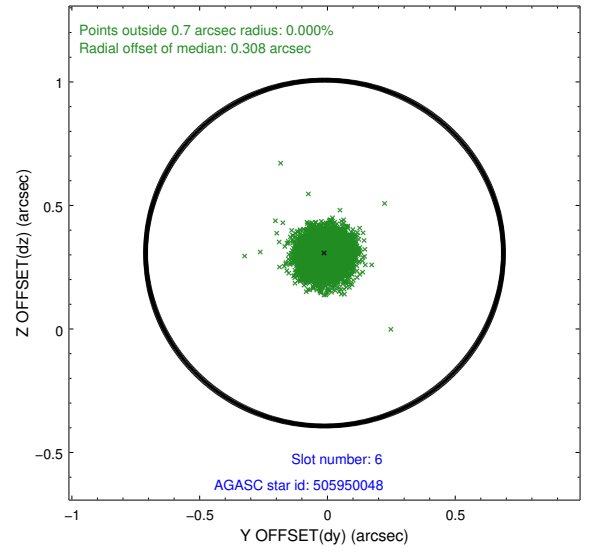
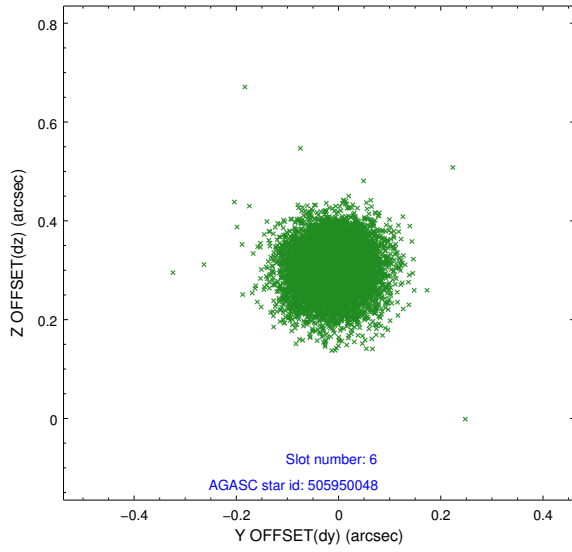
2.4.2 Slot 4



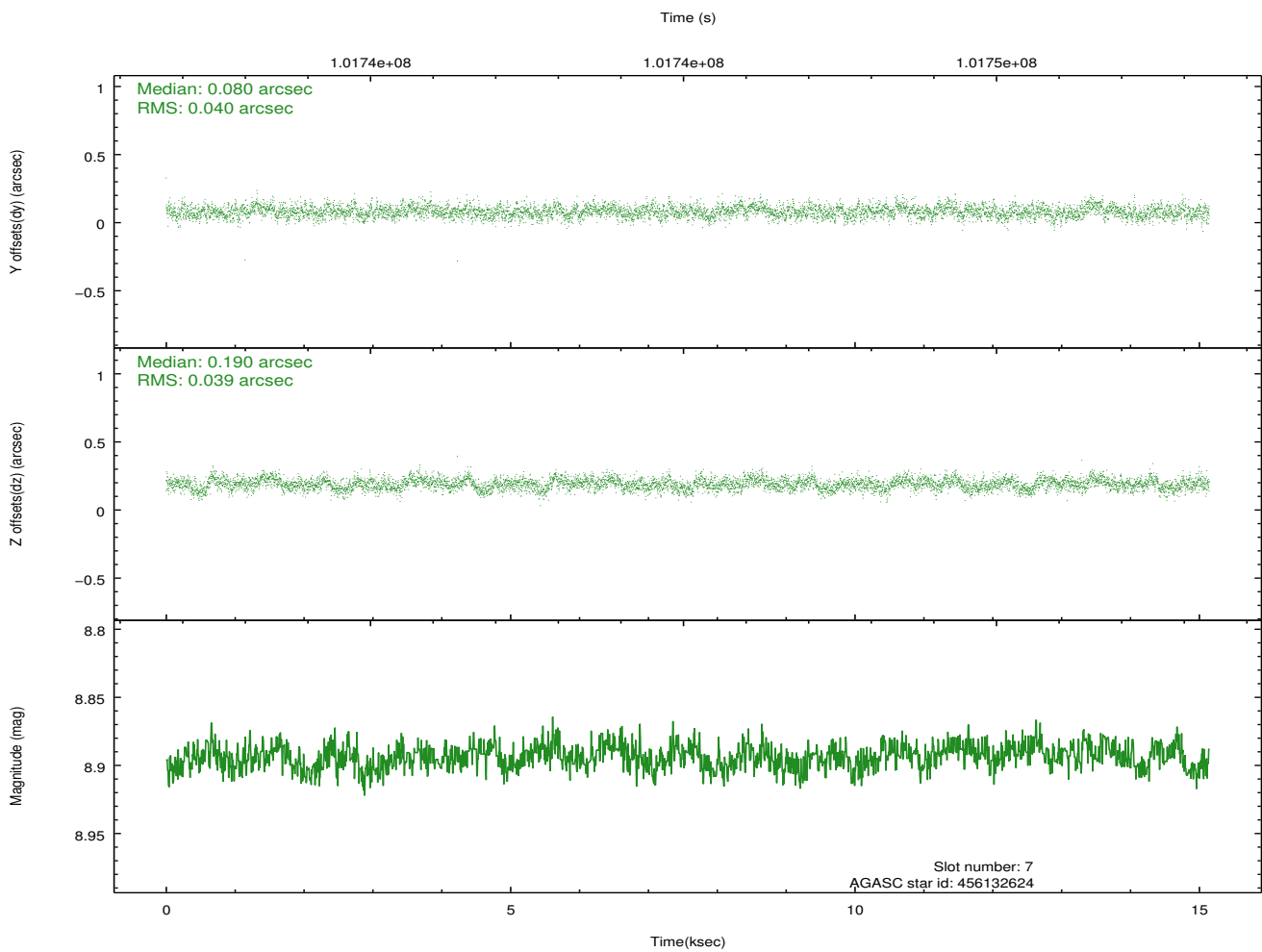
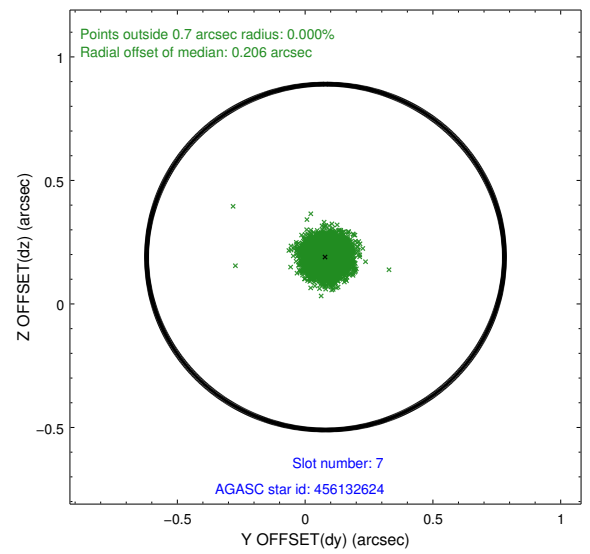
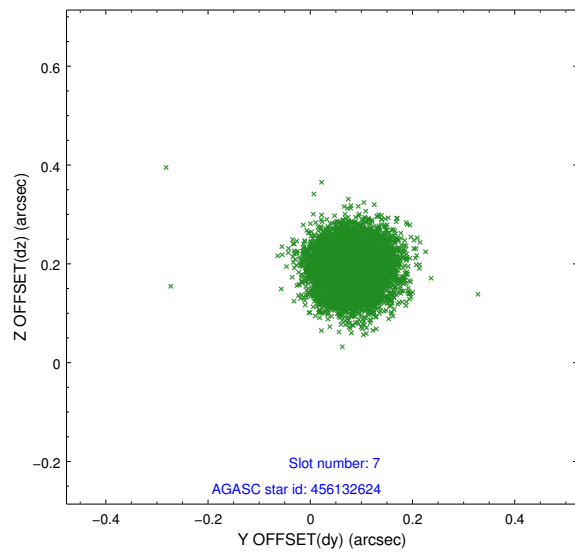
2.4.3 Slot 5



2.4.4 Slot 6

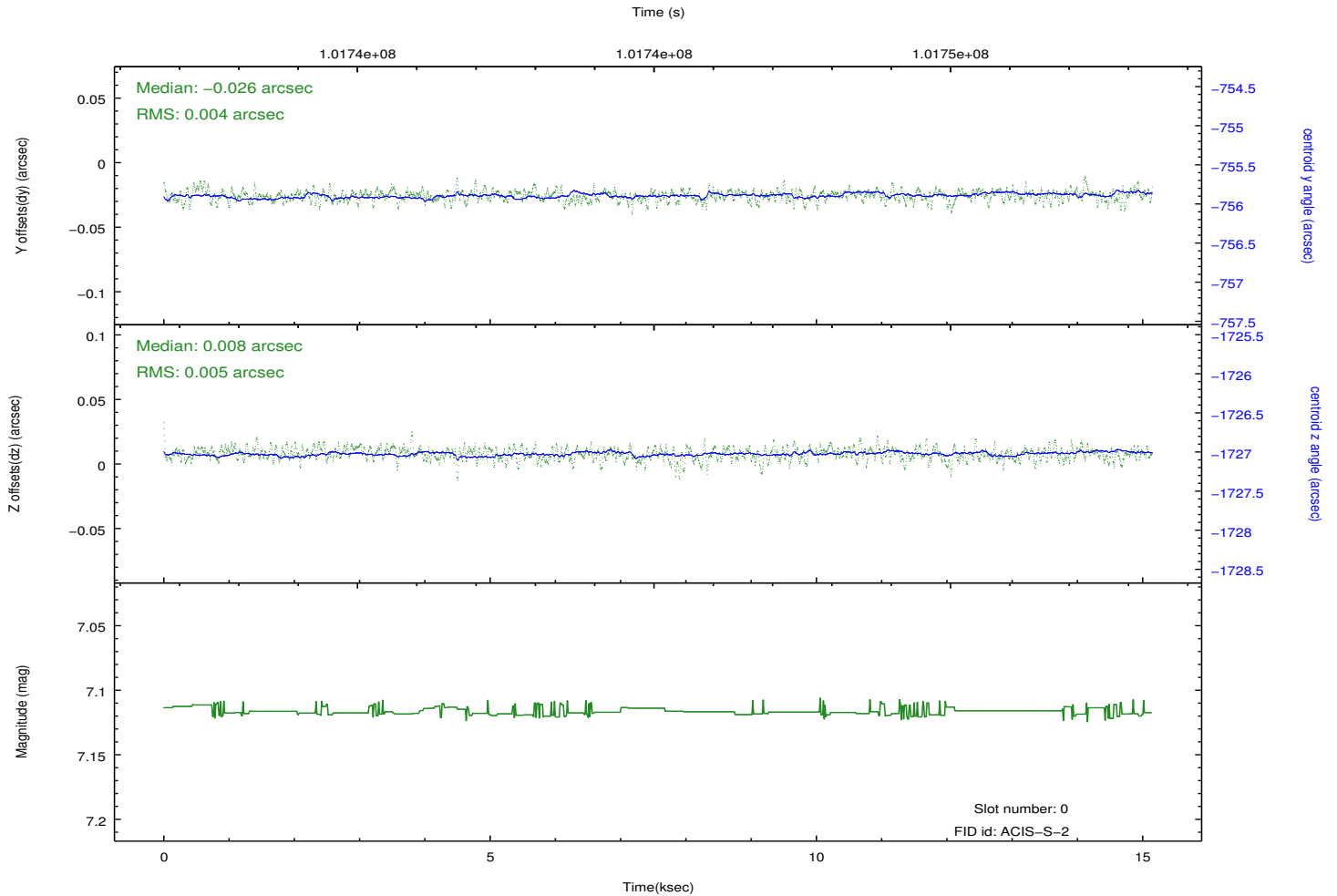
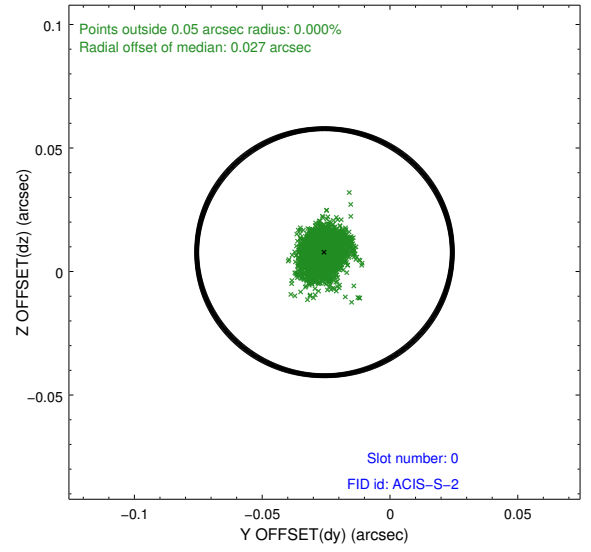
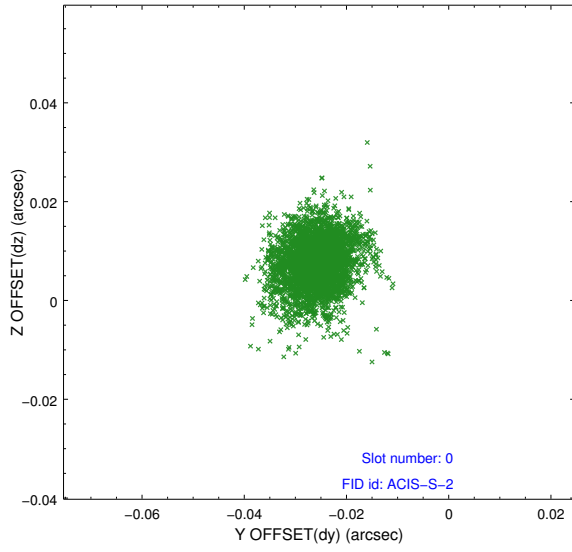


2.4.5 Slot 7

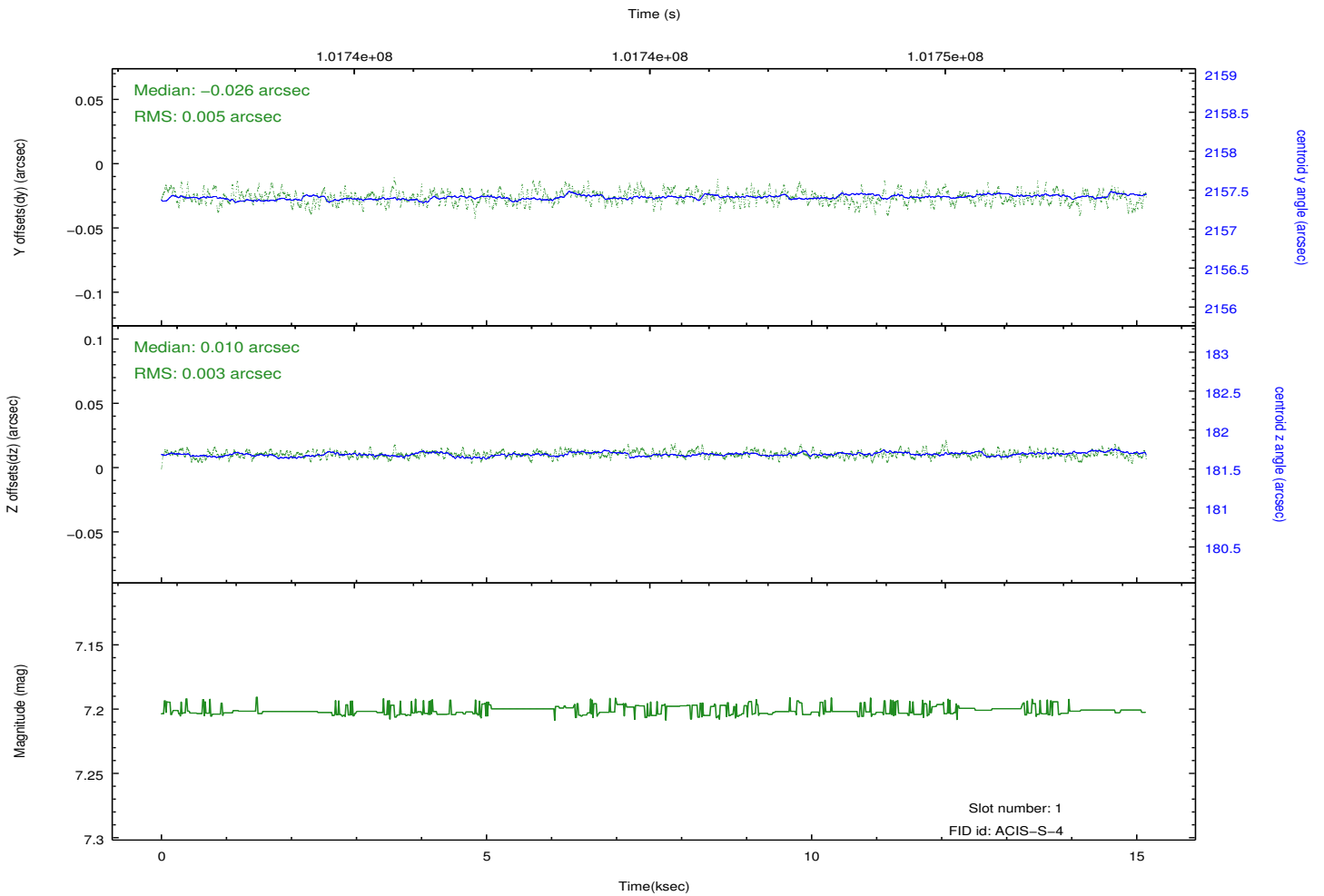
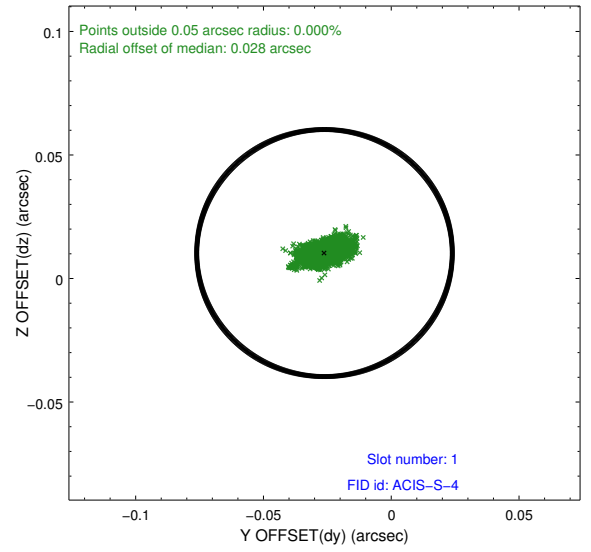
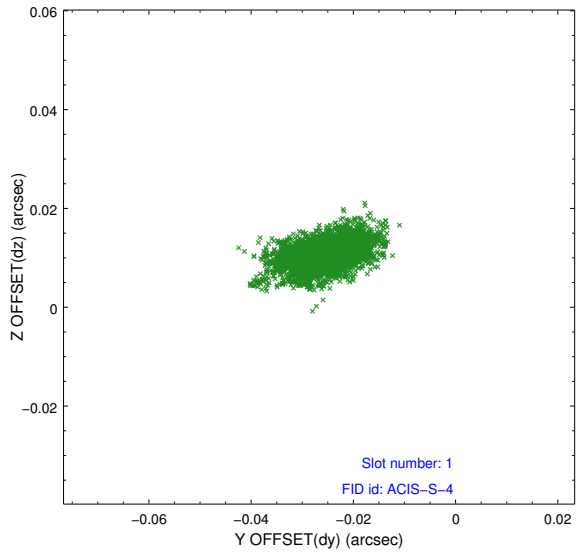


2.5 FID Slots

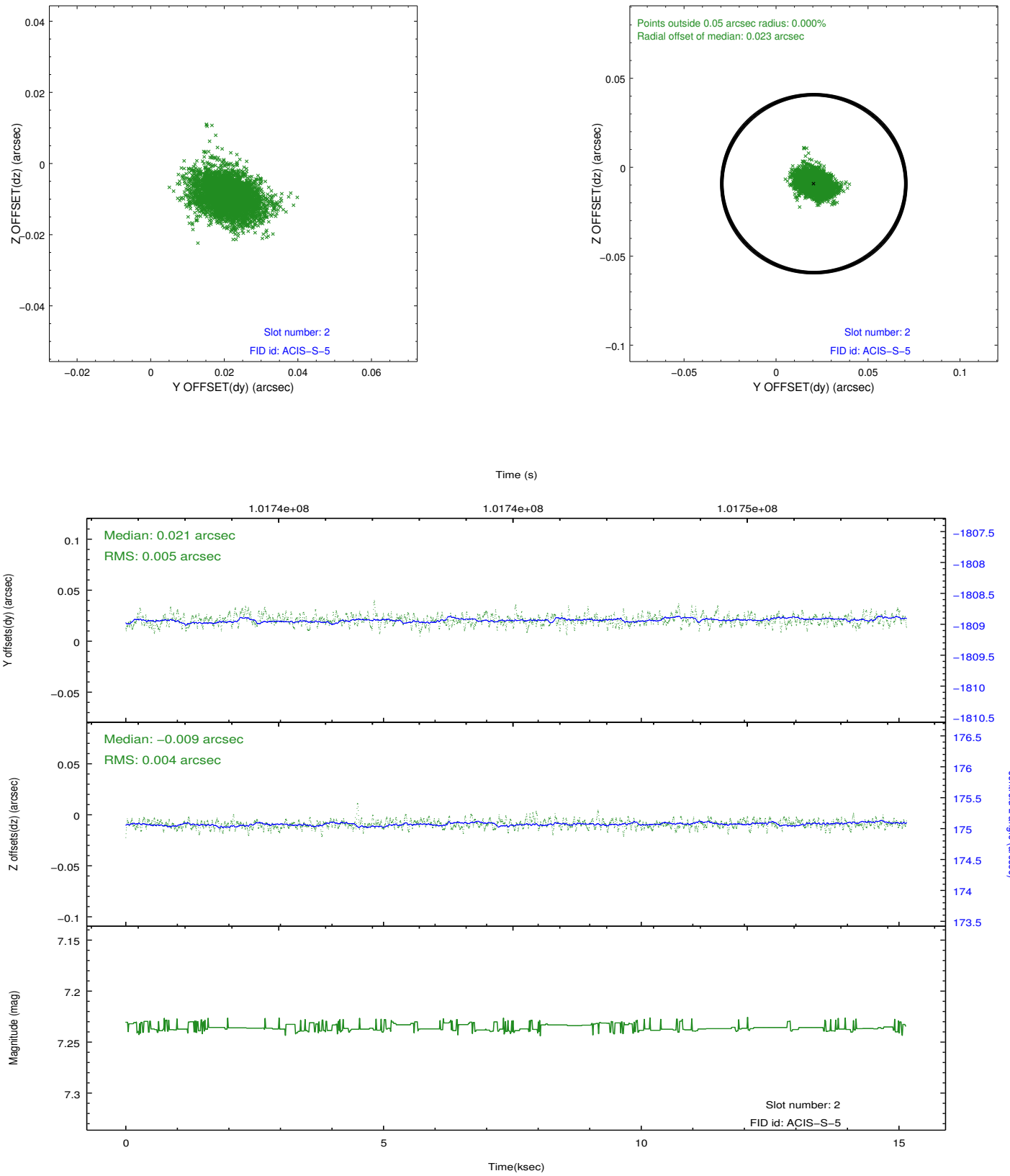
2.5.1 Slot 0



2.5.2 Slot 1



2.5.3 Slot 2



A Summary

A.1 Status

V&V Scientist	Jen Lauer
V&V Date (YYYY-MM-DD)	2012.09.18
V&V Edition	1
V&V Disposition and Status	OK
V&V Charge Time	15.1

A.2 Comments