

V&V Reference Report

L2 ASCDS Version : 10.2.4

Observation 16243 - L2 Version 1
Chandra X-Ray Center

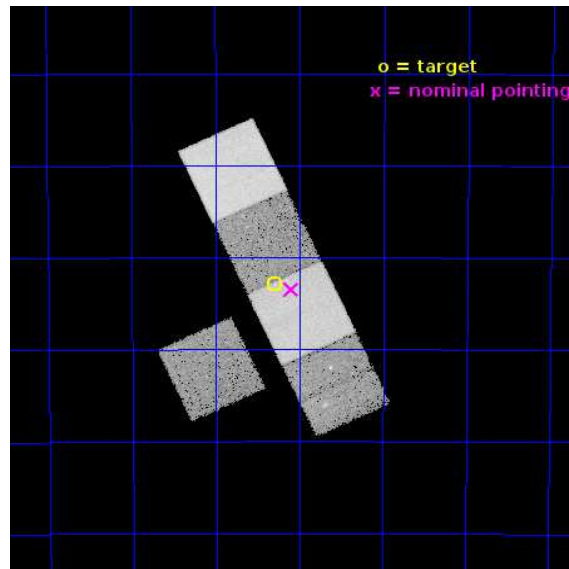
L2 Processing Date : Aug 28 2014

Contents

1	Front	2
2	OBI	3
2.1	OBI	3
2.1.1	Images	3
2.1.2	Bias	3
2.1.3	Parameters	4
2.1.4	Events	4
2.2	Compared Parameters	5
2.3	Aspect	6
2.4	Star Slots	9
2.4.1	Slot 3	9
2.4.2	Slot 4	10
2.4.3	Slot 5	11
2.4.4	Slot 6	12
2.4.5	Slot 7	13
2.5	FID Slots	14
2.5.1	Slot 0	14
2.5.2	Slot 1	15
2.5.3	Slot 2	16
A	Summary	17
A.1	Status	17
A.2	Comments	17

1 Front

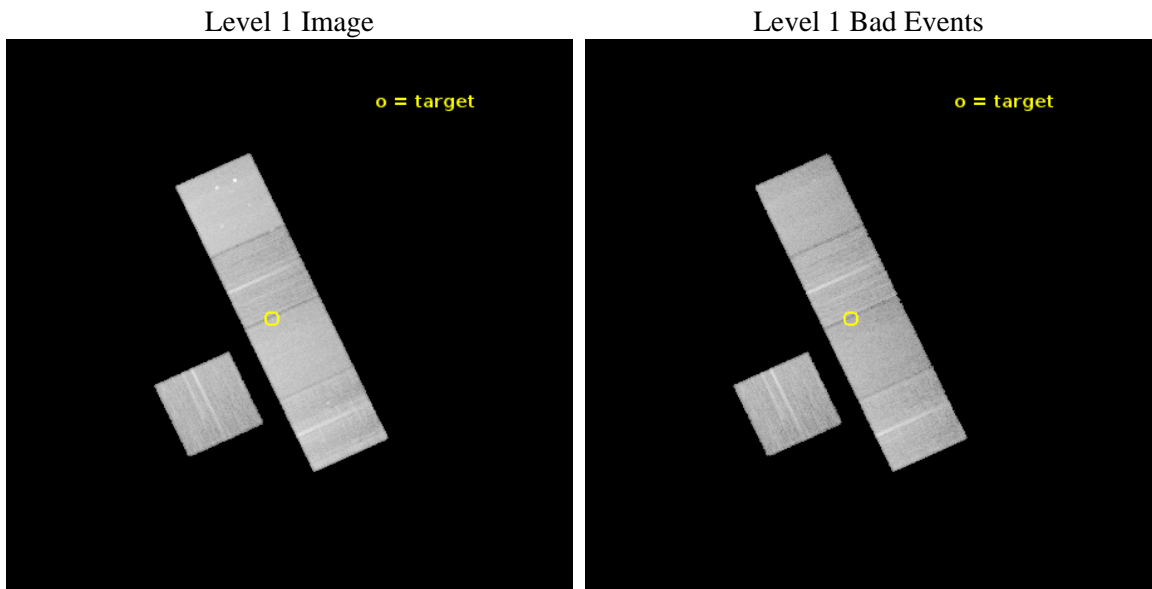
seq_num	601134	Sequence number
obs_id	16243	Observation id
title	The Missing Baryons Around Early-Type Galaxies	Proposal title
observer	Dr. Joel Bregman	Principal investigator
object	ESO 153-G003	Source name
dtycycle	0	
cycle	P	events from which exps? Prim/Second/Both
ra_targ	29.575833	Observer's specified target RA [deg]
dec_targ	-54.215833	Observer's specified target Dec [deg]
ra_nom	29.524468966084	Nominal RA [deg]
dec_nom	-54.224681869272	Nominal Dec [deg]
roll_nom	64.9833444465822	Nominal Roll [deg]
revision	1	Processing version of data
ontime	30062.82278198	Sum of GTIs [s]
livetime	29670.029870405	Livetime [s]
ontime3	30062.69966197	Sum of GTIs [s]
ontime5	30062.781741977	Sum of GTIs [s]
ontime6	30062.740701973	Sum of GTIs [s]
ontime7	30062.82278198	Sum of GTIs [s]
ontime8	30062.658621967	Sum of GTIs [s]
l2events	255269	Number of level 2 events



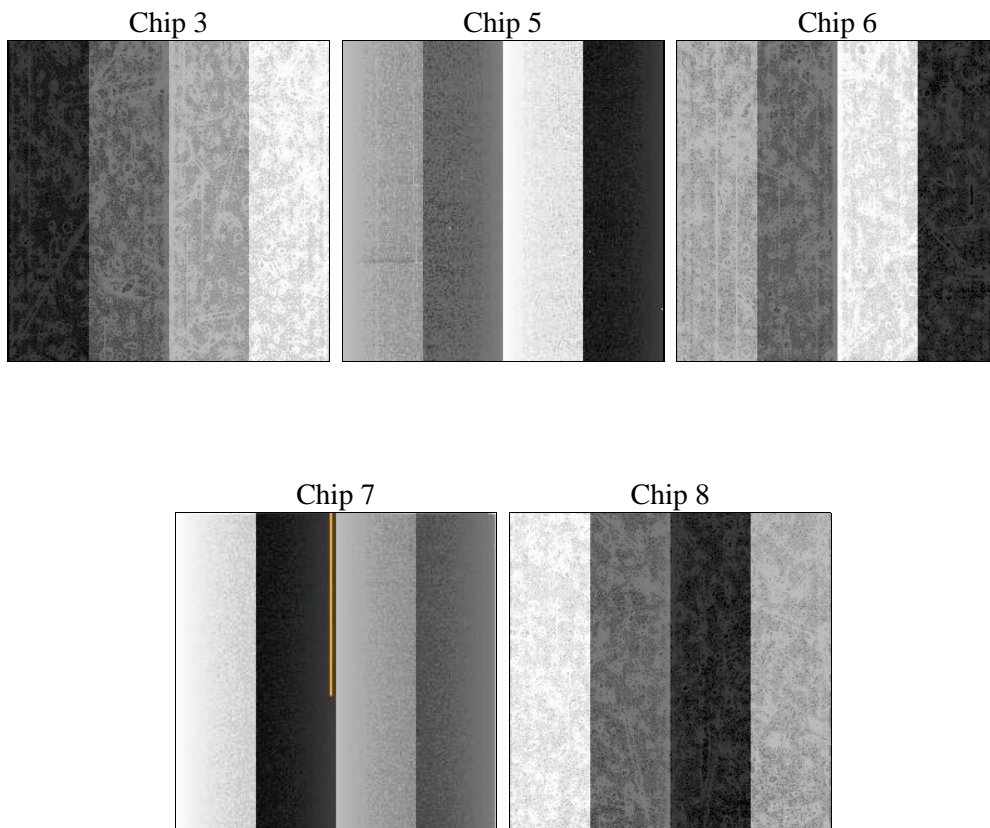
2 OBI

2.1 OBI

2.1.1 Images



2.1.2 Bias



2.1.3 Parameters

obi_num	0	Obi number	sched_exp_time	30000.000000	[s] Scheduled observation exposure time
ascdsver	10.2.4	Processing system revision	ontime	30062.82278198	Sum of GTIs [s]
caldbver	4.6.2	 	ontime3	30062.69966197	Sum of GTIs [s]
date	2014-08-28T14:15:48	Date and time of file creation	ontime5	30062.781741977	Sum of GTIs [s]
revision	1	Processing version of data	ontime6	30062.740701973	Sum of GTIs [s]
			ontime7	30062.82278198	Sum of GTIs [s]
			ontime8	30062.658621967	Sum of GTIs [s]
			l1events	993521	Number of level 1 events

2.1.4 Events

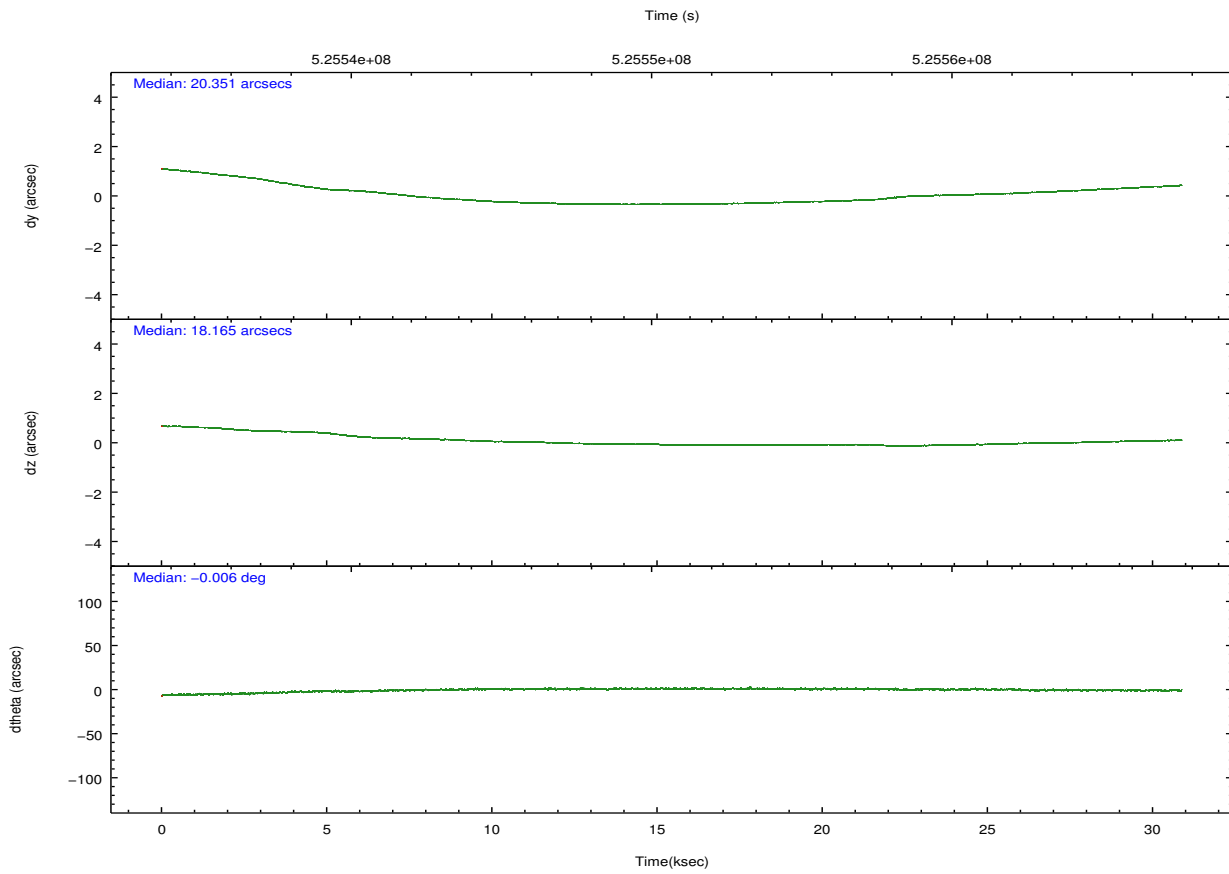
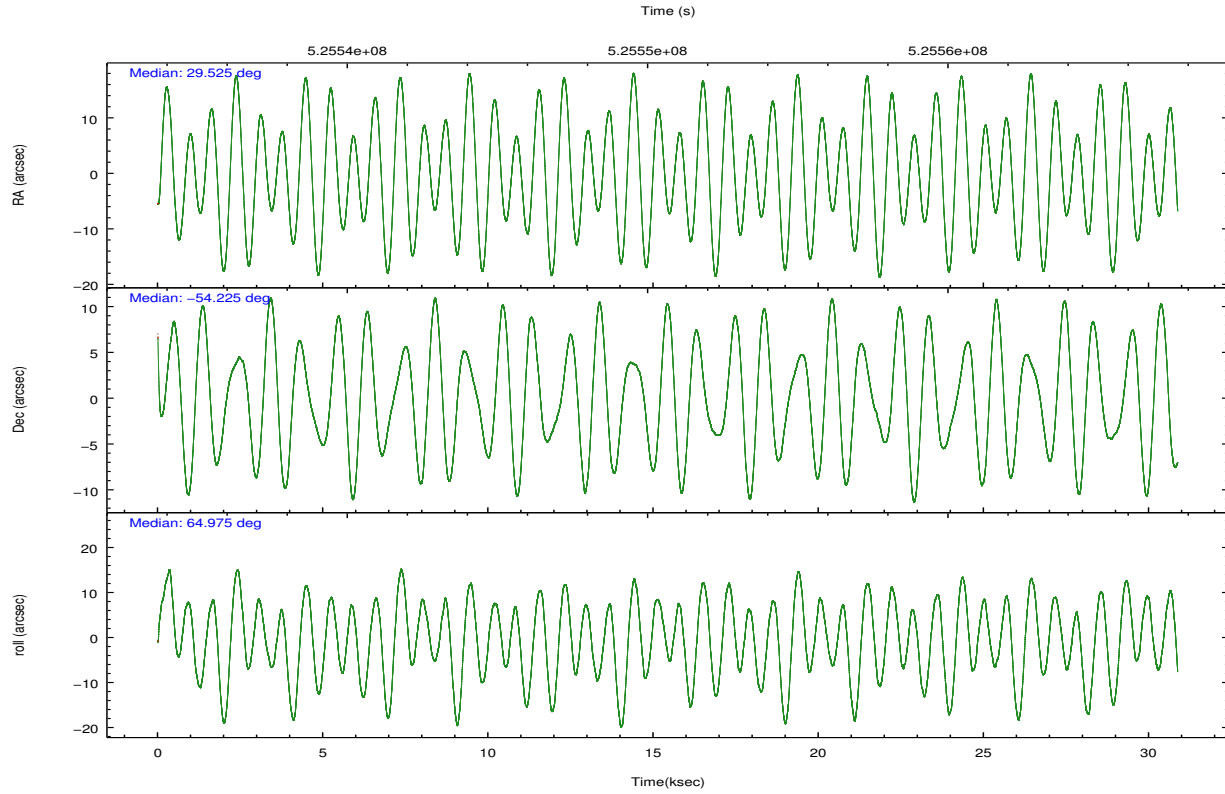
	ccd 3	ccd 5	ccd 6	ccd 7	ccd 8
level 1 events	151107	257899	160626	212969	210920
rejected events	134431	135108	141673	121780	152685
rejected %	88%	52%	88%	57%	72%

	ccd 3	ccd 5	ccd 6	ccd 7	ccd 8
grade 0 events	5531	10305	6446	7802	16860
	3%	3%	4%	3%	7%
grade 1 events	89	621	89	252	155
	0%	0%	0%	0%	0%
grade 2 events	3799	37238	4247	18811	13454
	2%	14%	2%	8%	6%
grade 3 events	1862	3985	1906	7499	6446
	1%	1%	1%	3%	3%
grade 4 events	1884	3971	1913	7423	6056
	1%	1%	1%	3%	2%
grade 5 events	8239	18500	8075	21830	12084
	5%	7%	5%	10%	5%
grade 6 events	3601	67311	4442	49665	15428
	2%	26%	2%	23%	7%
grade 7 events	126102	115968	133508	99687	140437
	83%	44%	83%	46%	66%

2.2 Compared Parameters

Parameter	Planned	Actual	Parameter	Planned	Actual
Instrument	ACIS	ACIS	Obspar format version number	7	7
Detector	ACIS-35678	ACIS-35678	Obspar file type	PREDICTED	ACTUAL
Grating	NONE	NONE	Obspar update status	NONE	UPDATED
Data mode	VFAINT	VFAINT	CCD I0 on	N	N
Observation mode	POINTING	POINTING	CCD I1 on	N	N
[deg] Pointing RA	29.529148	29.52446896608365	CCD I2 on	N	N
[deg] Pointing Dec	-54.252001	-54.22468186927182	CCD I3 on	Y	Y
[deg] Pointing Roll	64.830511	64.9833444658225	CCD S0 on	N	N
[mm] SIM focus pos	-0.684267	-0.6828225247311905	CCD S1 on	O2	Y
[mm] SIM defocus	0	0.001444936568705701	CCD S2 on	Y	Y
[mm] SIM translation stage pos	-190.132523	-190.1400660498719	CCD S3 on	Y	Y
[mm] SIM translation stage offset	0	0.00754346686406393	CCD S4 on	O1	Y
[s] Observation start time (MET)	525536114.184000	525534546.2819	CCD S5 on	N	N
Observation start date	2014-08-27T14:14:07	2014-08-27T13:49:06	Number of optional ACIS chips dropped	0	0
[s] Observation end time (MET)	525566114.184000	525566939.35869	On-chip summing requested	N	N
Observation end date	2014-08-27T22:34:07	2014-08-27T22:48:59	Subarray requested	NONE	NONE
Read mode	TIMED	TIMED	Alternating exposures requested	N	N
			[s] Primary exposure time	0.000000	3.1

2.3 Aspect

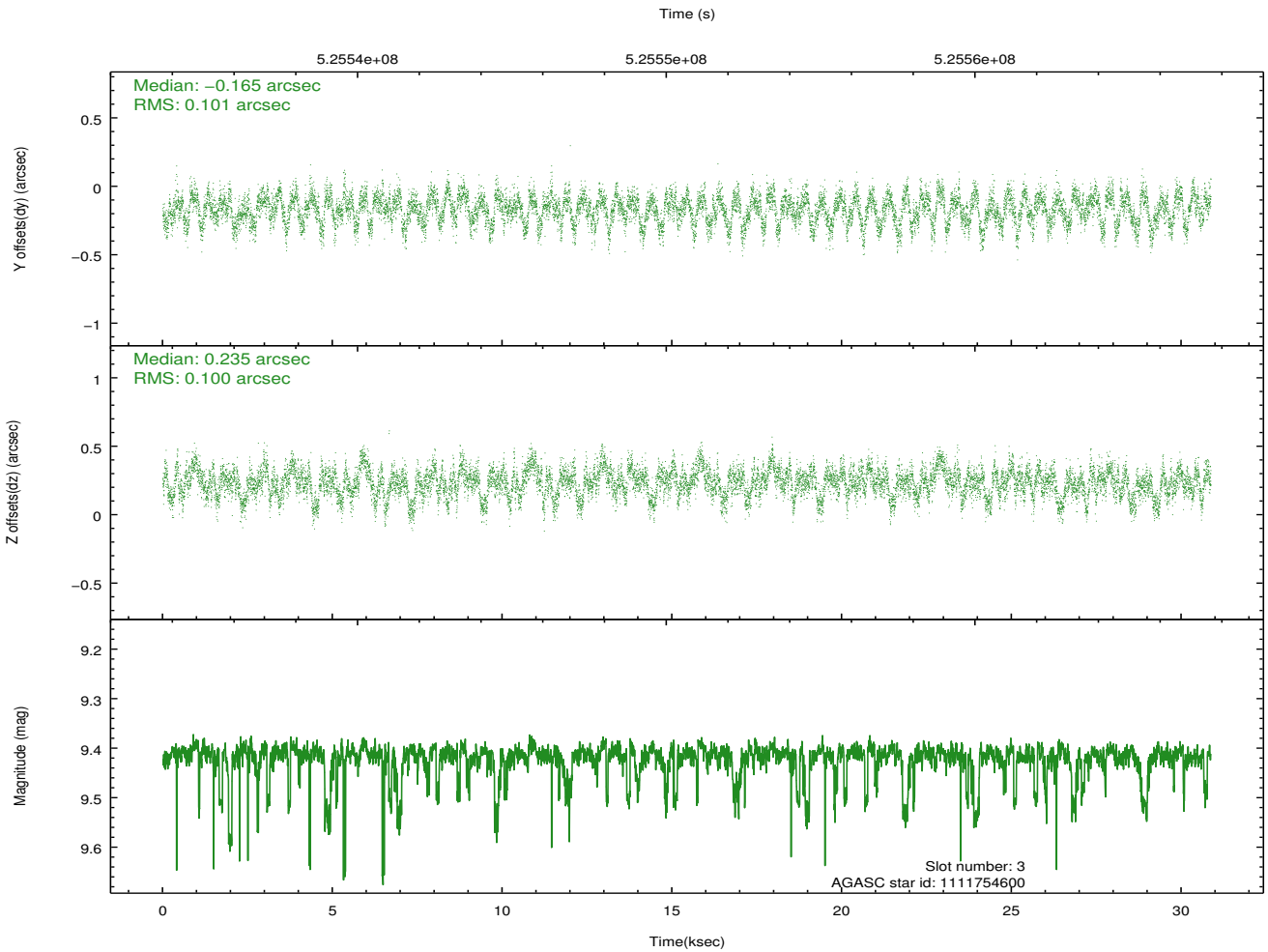
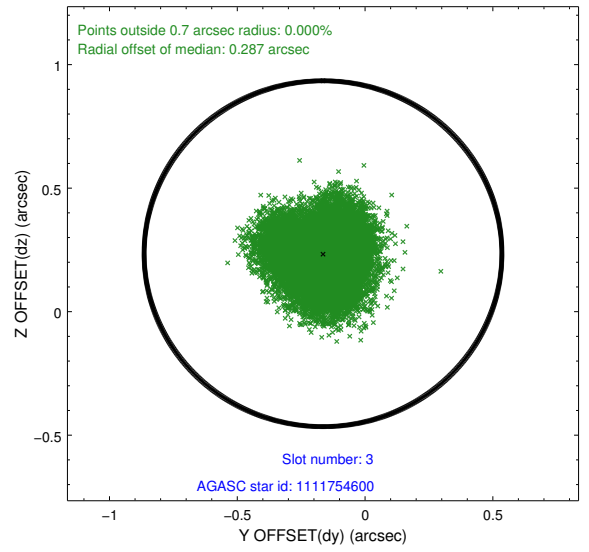
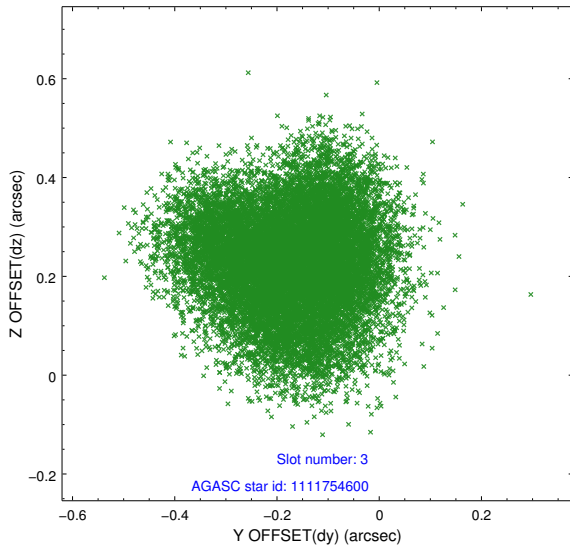


Slot Statistics

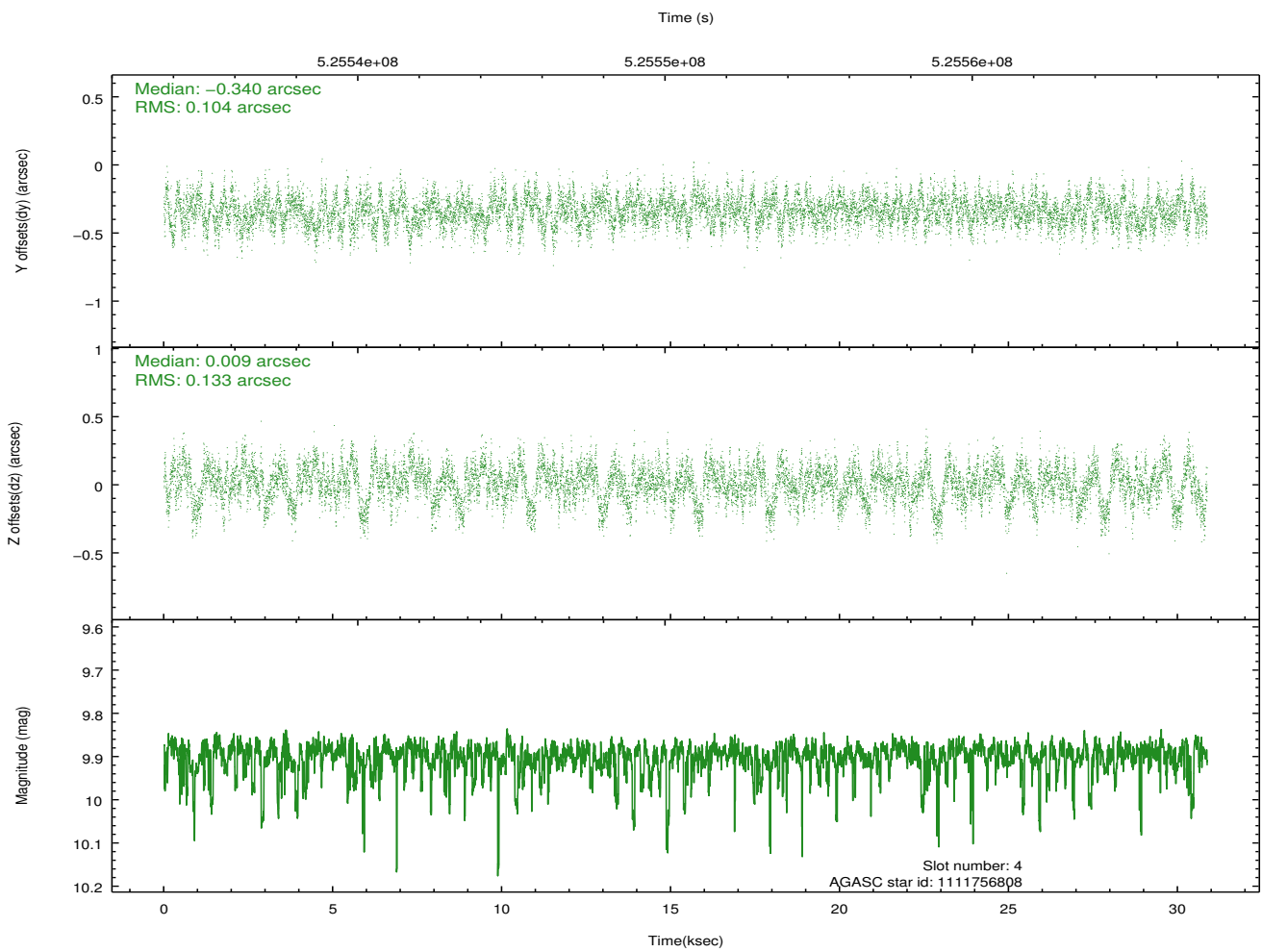
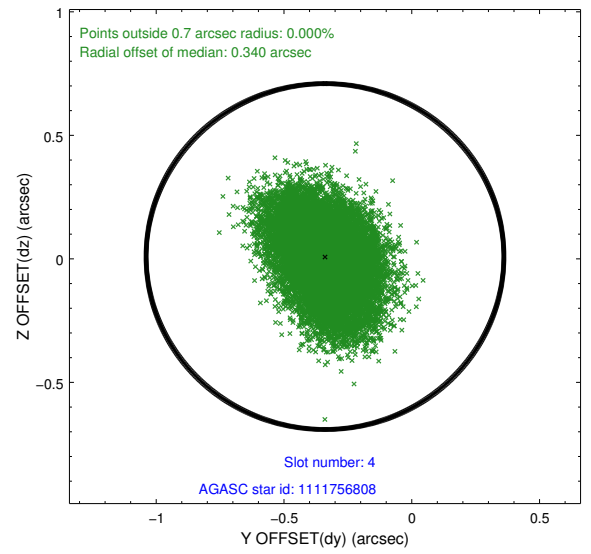
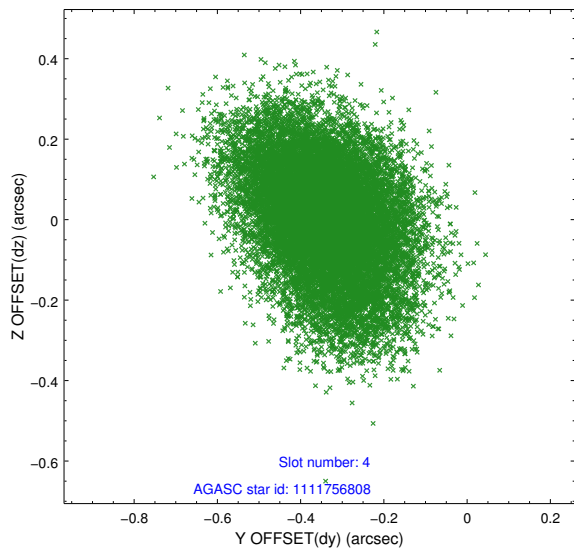
slot	status	id	mag	n_pts	med_dy	med_dz	dr1	dr2	ra	dec	mean_y	mean_z
0	FID	ACIS-S-1	7.10	7529	0.087	-0.019	0.013	0.021	0.000000	0.000000	922.61	-1735.36
1	FID	ACIS-S-5	7.14	7530	-0.177	0.056	0.014	0.021	0.000000	0.000000	-1826.62	162.19
2	FID	ACIS-S-6	7.25	7530	0.070	-0.026	0.011	0.017	0.000000	0.000000	388.06	806.15
3	GUIDE	1111754600	9.42	15036	-0.165	0.235	0.155	0.238	28.290388	-54.483779	-1877.59	1979.97
4	GUIDE	1111756808	9.90	15022	-0.340	0.009	0.179	0.297	30.288509	-54.106344	1148.28	-1230.53
5	GUIDE	1111757128	8.99	15057	-0.150	0.252	0.106	0.167	29.037275	-54.403072	-933.20	699.61
6	GUIDE	1111758216	9.04	15055	0.632	-0.309	0.143	0.218	30.288178	-54.010077	1464.24	-1086.24
7	GUIDE	1112151752	6.46	15058	0.025	-0.170	0.106	0.158	30.070409	-55.012797	-2006.99	-2178.15

2.4 Star Slots

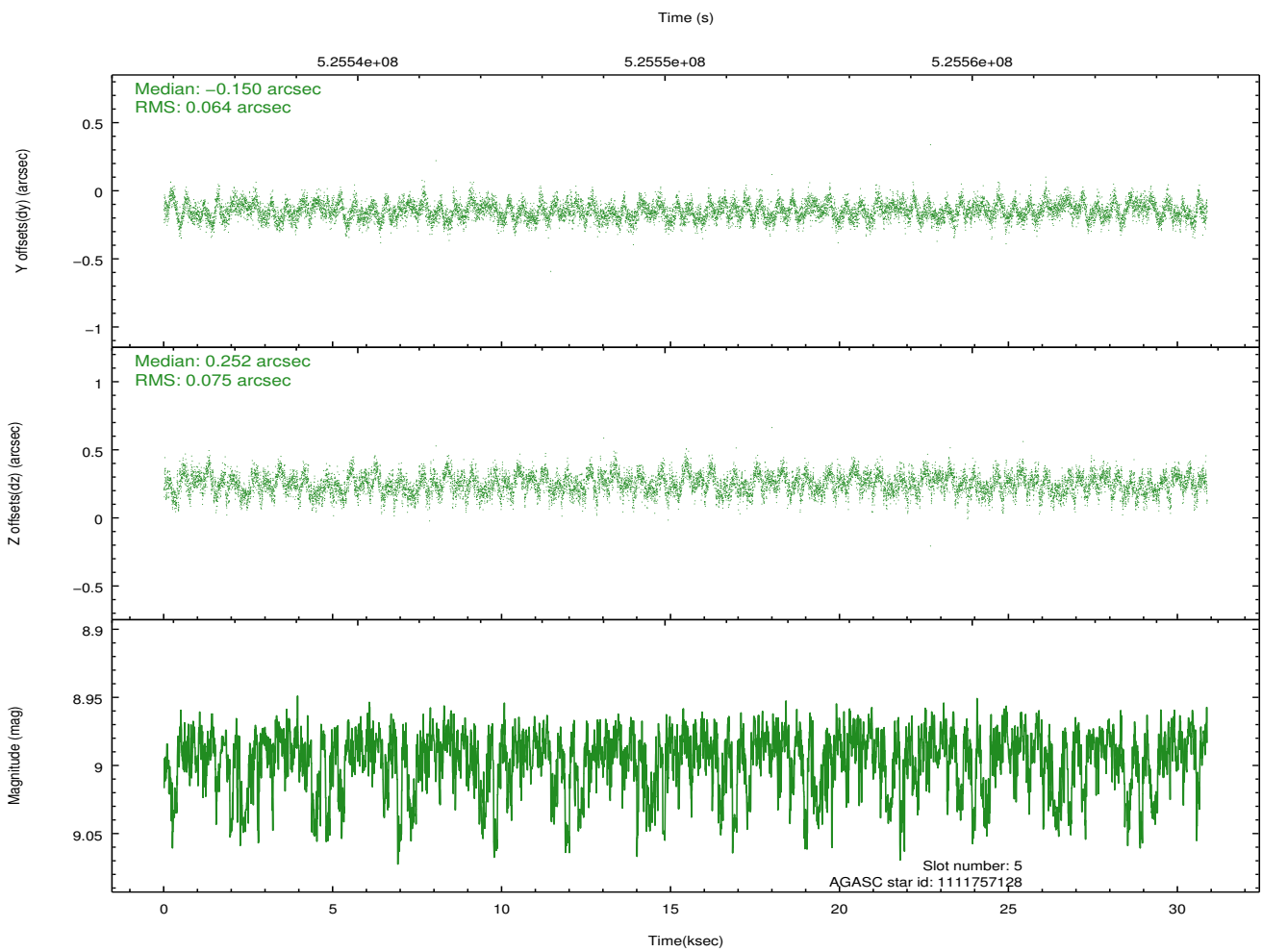
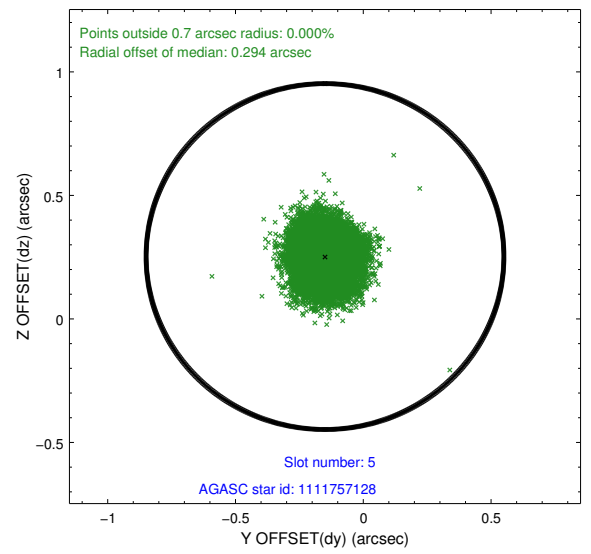
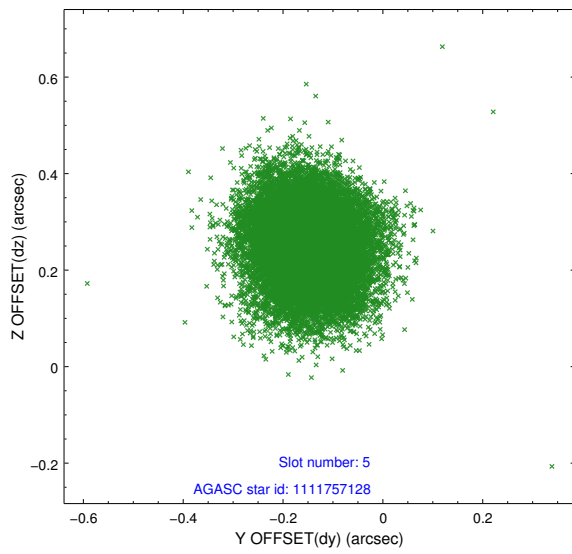
2.4.1 Slot 3



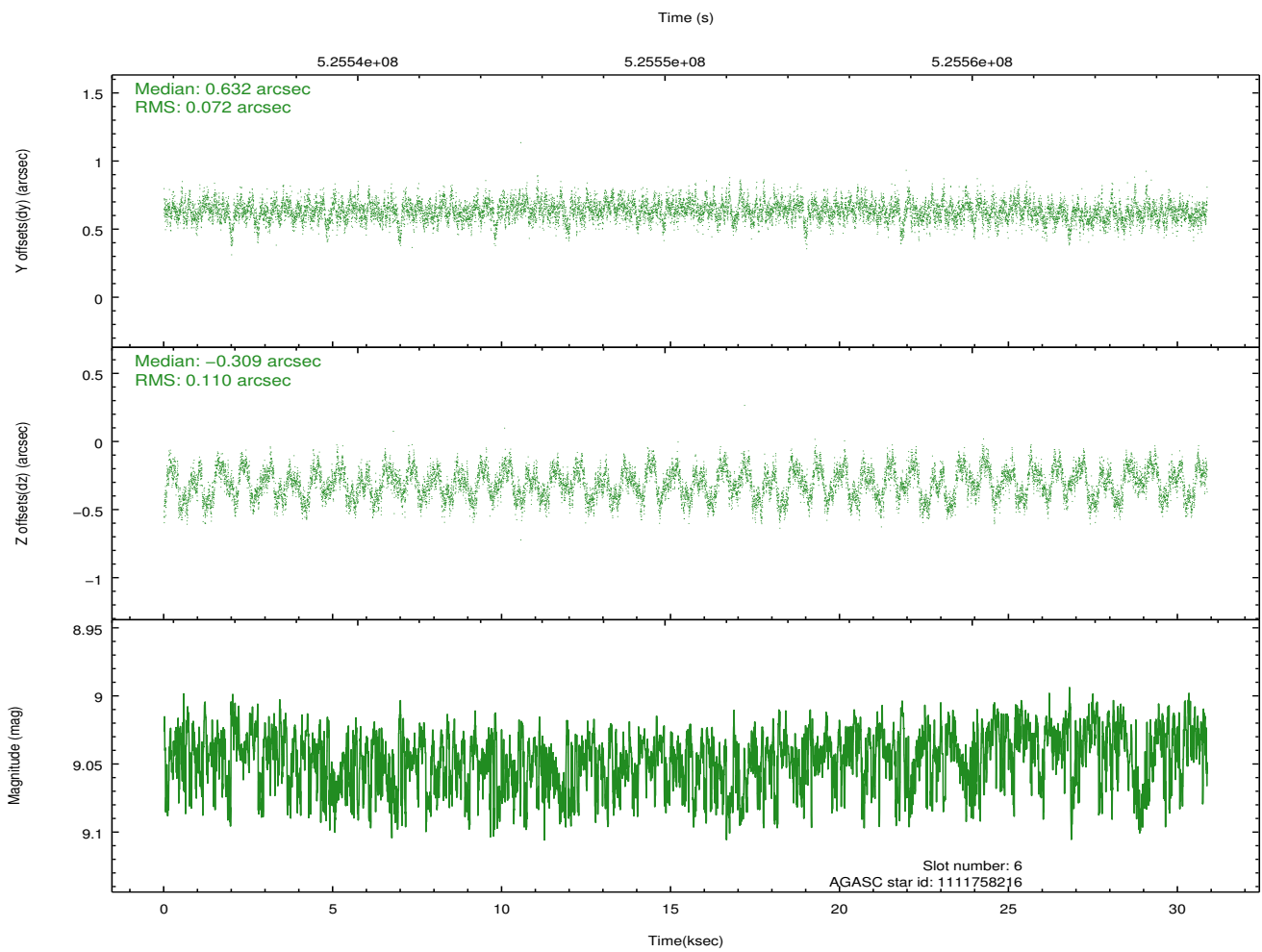
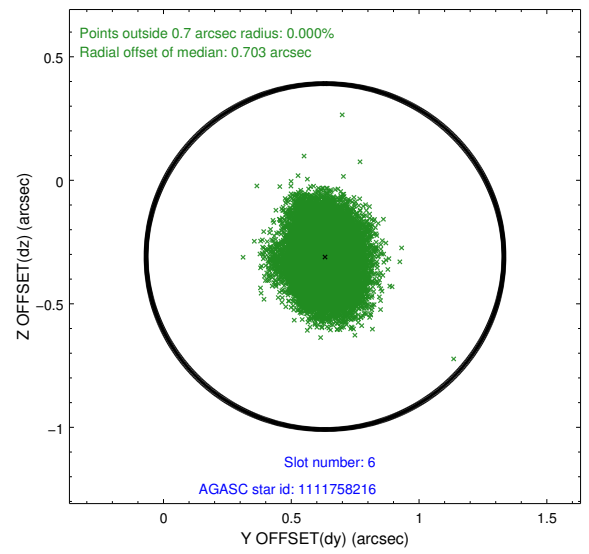
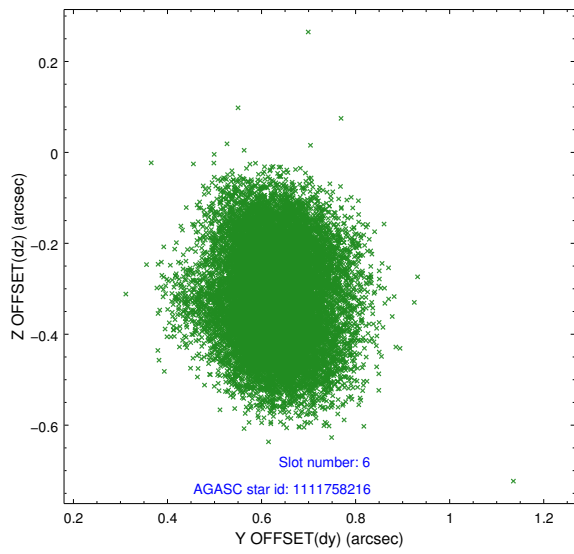
2.4.2 Slot 4



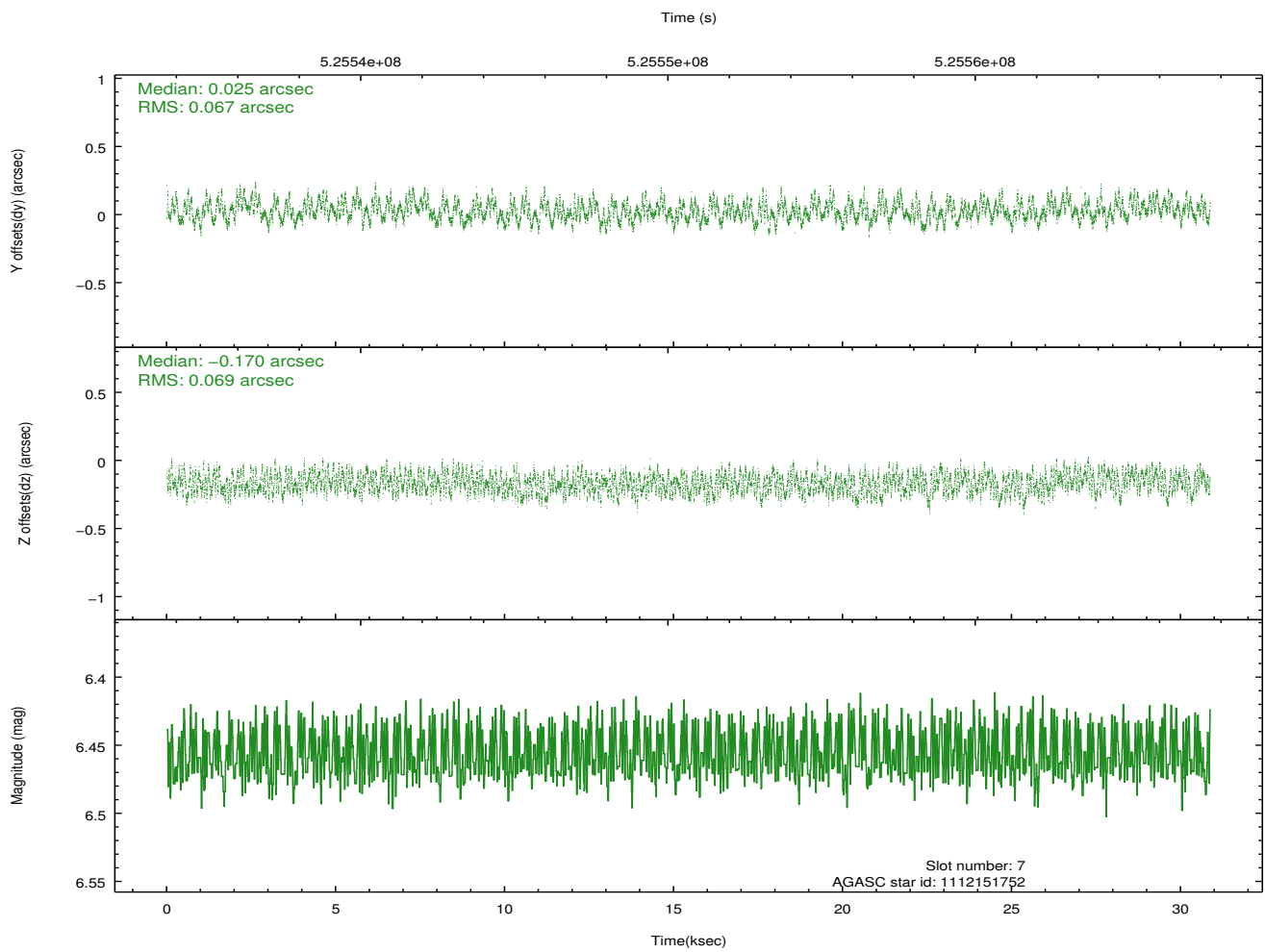
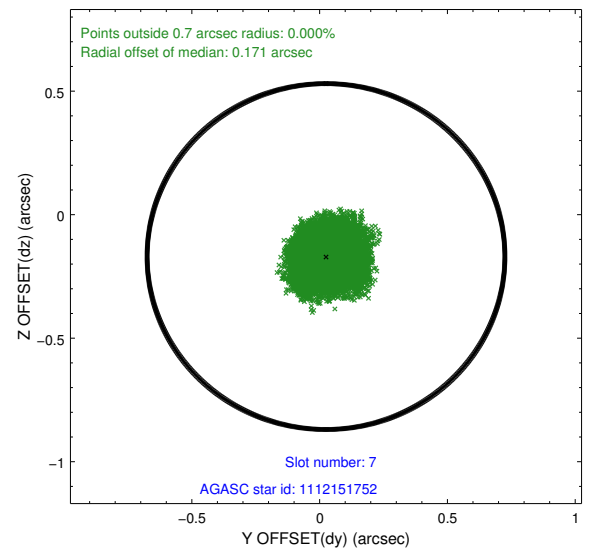
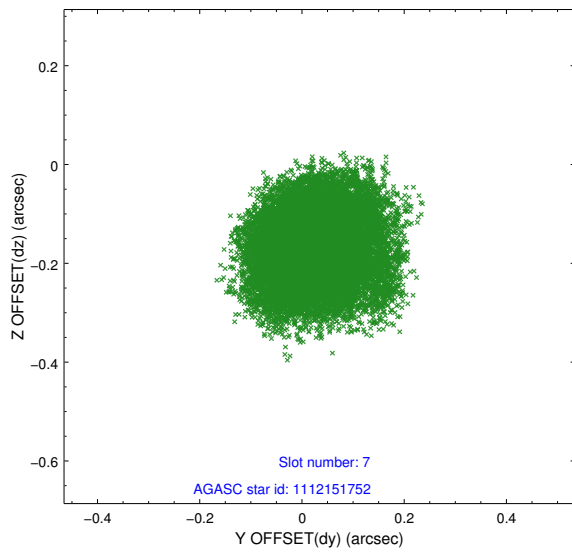
2.4.3 Slot 5



2.4.4 Slot 6

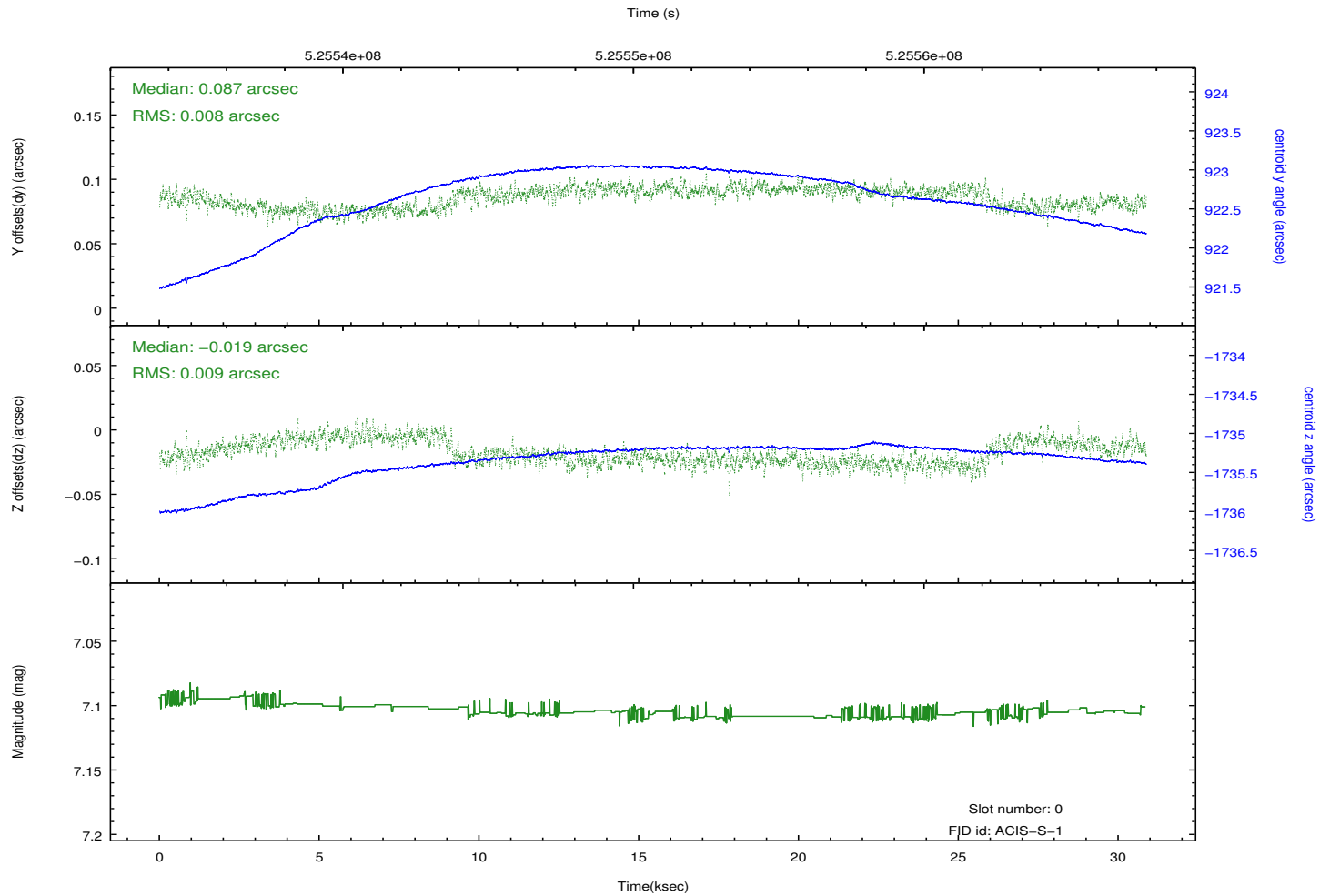
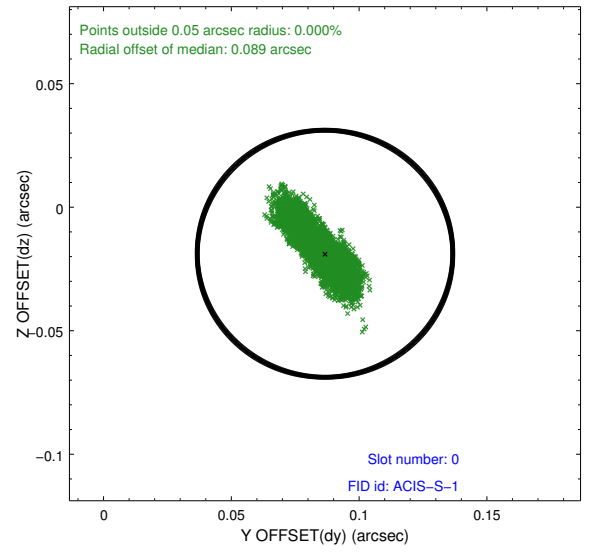
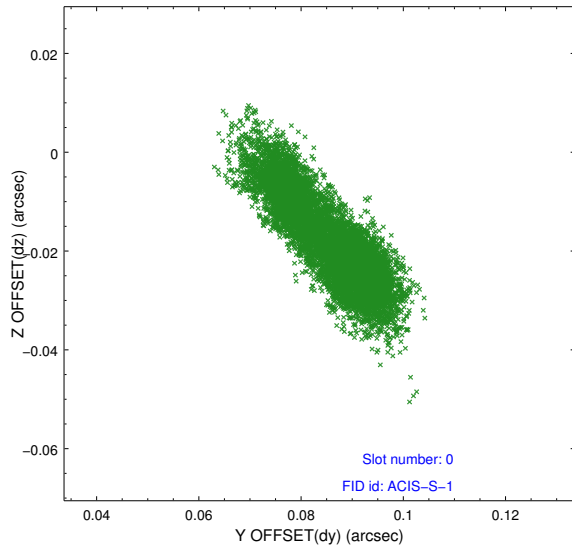


2.4.5 Slot 7

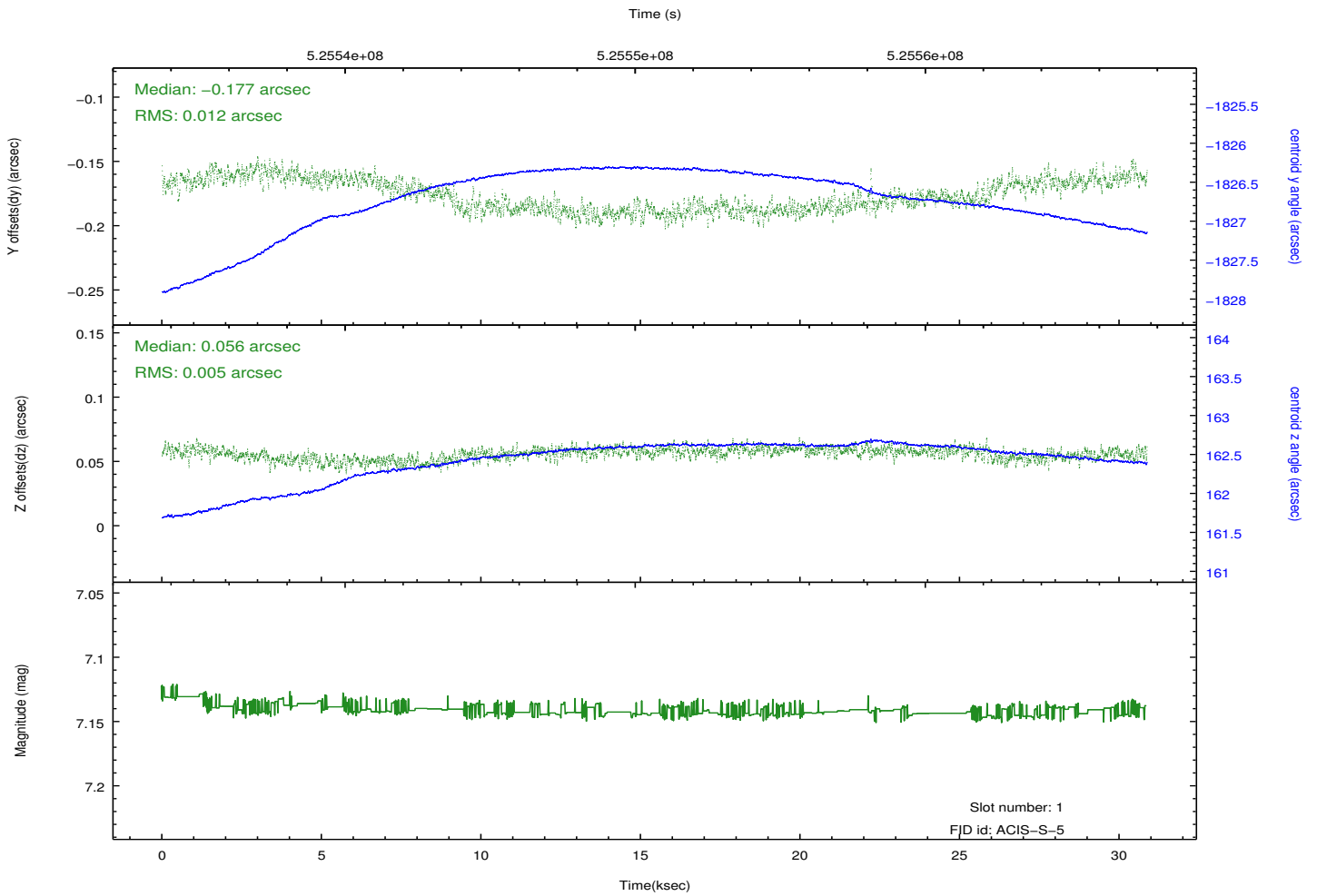
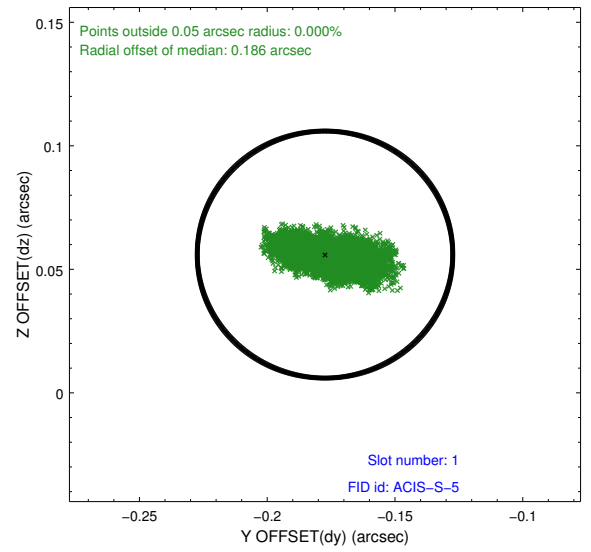
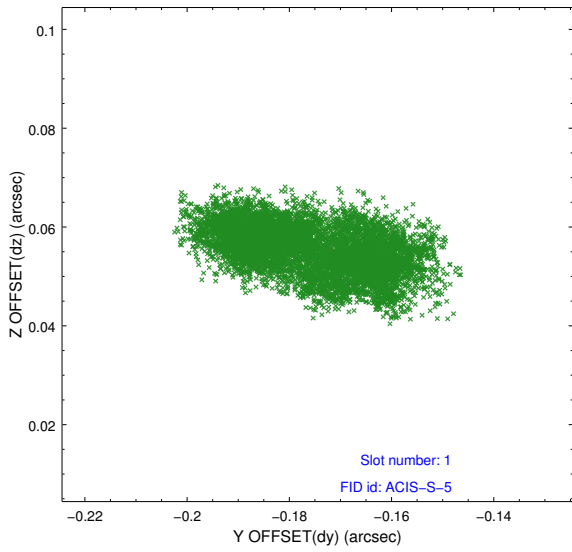


2.5 FID Slots

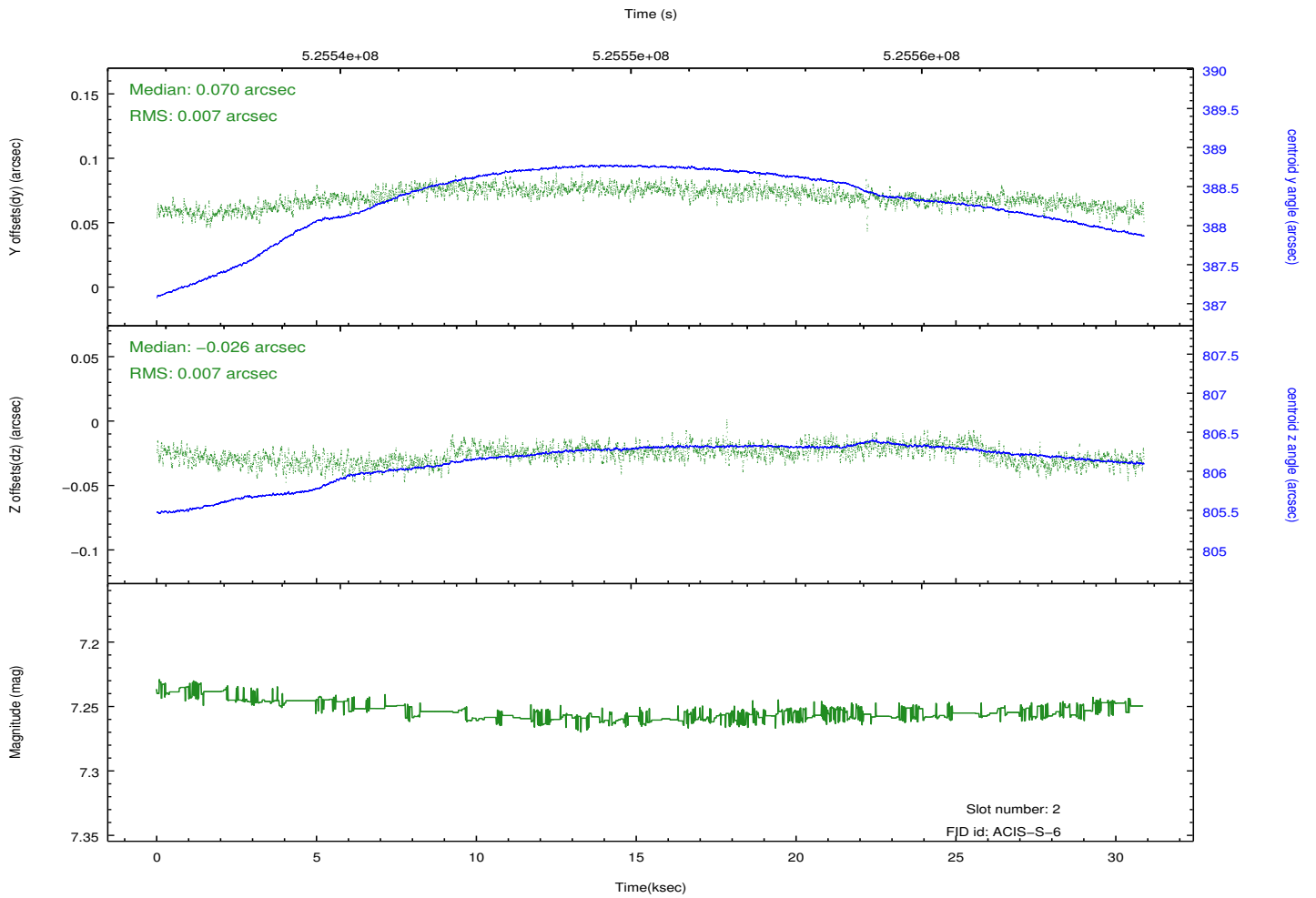
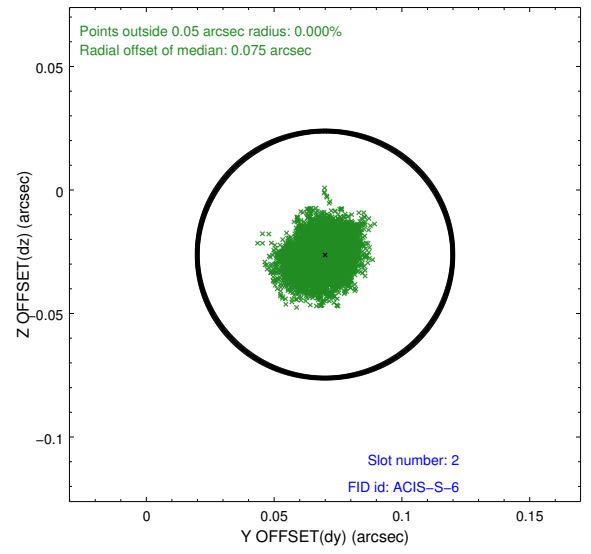
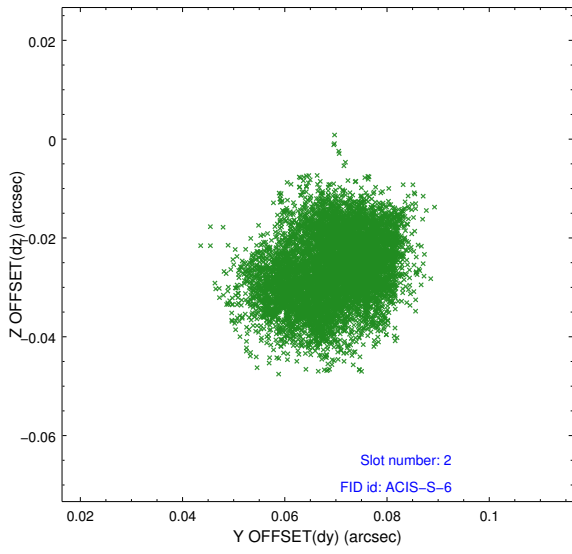
2.5.1 Slot 0



2.5.2 Slot 1



2.5.3 Slot 2



A Summary

A.1 Status

V&V Scientist	Beth Sundheim
V&V Date (YYYY-MM-DD)	2014.08.28
V&V Edition	1
V&V Disposition and Status	OK
V&V Charge Time	30.06282278198

A.2 Comments