

# V&V Reference Report

## L2 ASCDS Version : 10.2.4

Observation 16463 - L2 Version 1  
Chandra X-Ray Center

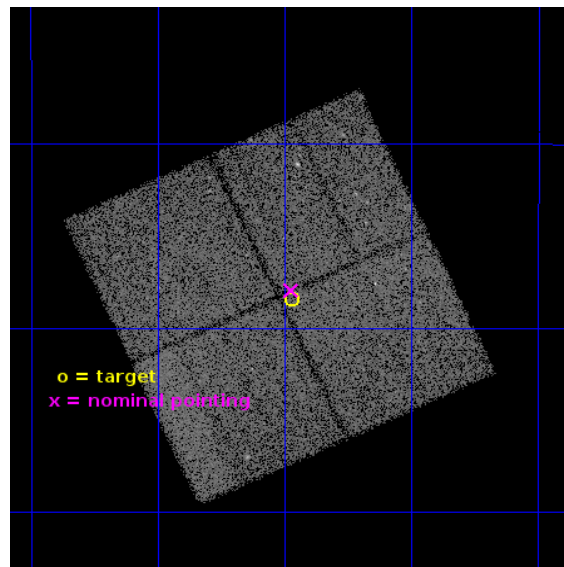
L2 Processing Date : Sep 24 2014

## Contents

<b>1</b>	<b>Front</b>	<b>2</b>
<b>2</b>	<b>OBI</b>	<b>3</b>
2.1	OBI . . . . .	3
2.1.1	Images . . . . .	3
2.1.2	Bias . . . . .	3
2.1.3	Parameters . . . . .	4
2.1.4	Events . . . . .	4
2.2	Compared Parameters . . . . .	5
2.3	Aspect . . . . .	6
2.4	Star Slots . . . . .	9
2.4.1	Slot 3 . . . . .	9
2.4.2	Slot 4 . . . . .	10
2.4.3	Slot 5 . . . . .	11
2.4.4	Slot 6 . . . . .	12
2.4.5	Slot 7 . . . . .	13
2.5	FID Slots . . . . .	14
2.5.1	Slot 0 . . . . .	14
2.5.2	Slot 1 . . . . .	15
2.5.3	Slot 2 . . . . .	16
<b>A</b>	<b>Summary</b>	<b>17</b>
A.1	Status . . . . .	17
A.2	Comments . . . . .	17

# 1 Front

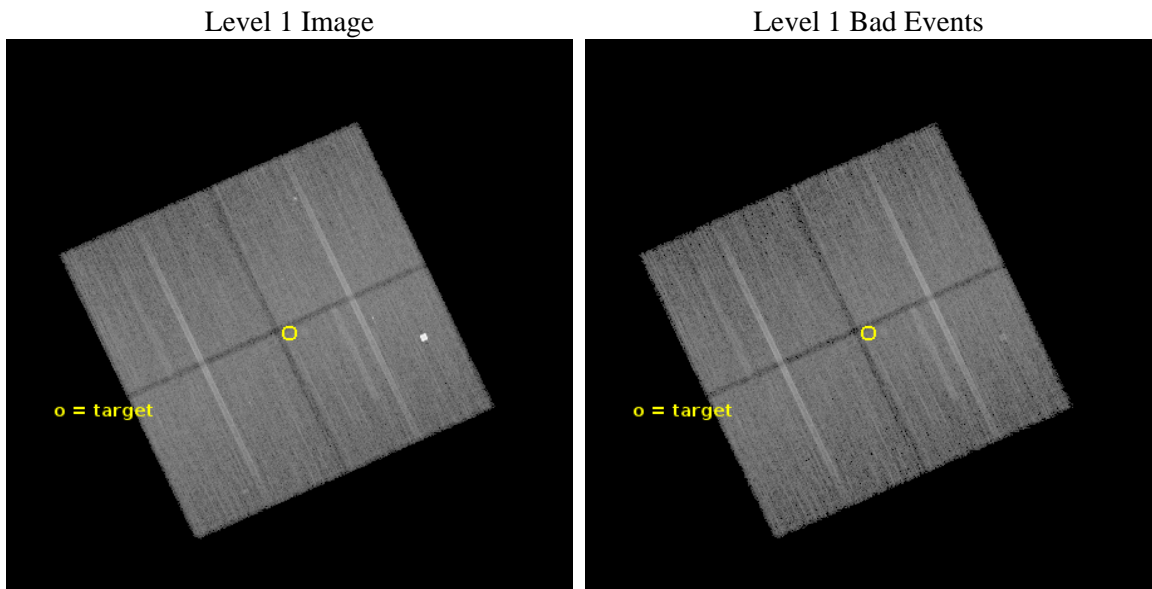
seq_num	901115	Sequence number
obs_id	16463	Observation id
title	The Chandra Deep Field-South: A Peerless Ultradeep Survey for Exploring the Distant X-ray Universe	Proposal title
observer	Prof. W.N. Brandt	Principal investigator
object	Chandra Deep Field-South	Source name
dtcycle	0	&#160
cycle	P	events from which exps? Prim/Second/Both
ra_targ	53.117083	Observer's specified target RA [deg]
dec_targ	-27.807333	Observer's specified target Dec [deg]
ra_nom	53.11826773843	Nominal RA [deg]
dec_nom	-27.799223161329	Nominal Dec [deg]
roll_nom	65.209240507453	Nominal Roll [deg]
revision	1	Processing version of data
ontime	53924.289100707	Sum of GTIs [s]
livetime	53219.728565122	Livetime [s]
ontime0	53927.306991041	Sum of GTIs [s]
ontime1	53924.20702064	Sum of GTIs [s]
ontime2	53917.965999782	Sum of GTIs [s]
ontime3	53924.289100707	Sum of GTIs [s]
l2events	113600	Number of level 2 events



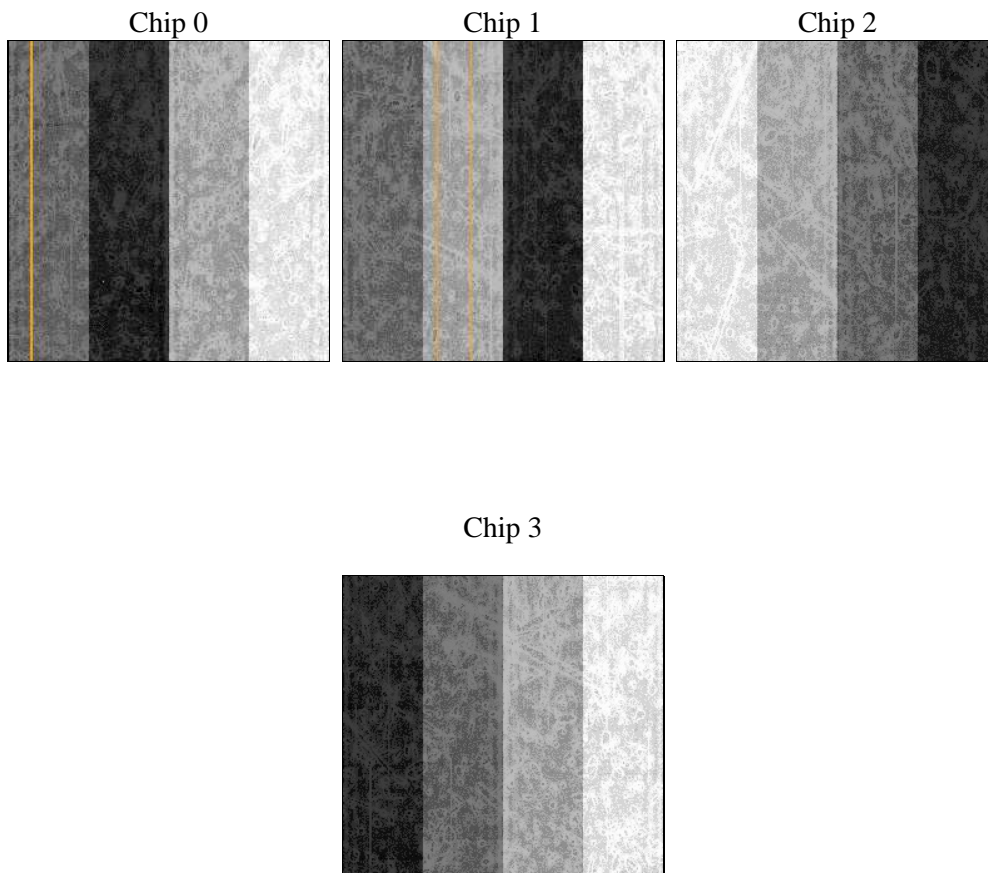
## 2 OBI

### 2.1 OBI

#### 2.1.1 Images



#### 2.1.2 Bias



### 2.1.3 Parameters

obi_num	0	Obi number	sched_exp_time	53838.000000	[s] Scheduled observation exposure time
ascdsver	10.2.4	Processing system revision	ontime	53924.289100707	Sum of GTIs [s]
caldsver	4.6.3	&#160	ontime0	53927.306991041	Sum of GTIs [s]
date	2014-09-24T04:59:12	Date and time of file creation	ontime1	53924.20702064	Sum of GTIs [s]
revision	1	Processing version of data	ontime2	53917.965999782	Sum of GTIs [s]
			ontime3	53924.289100707	Sum of GTIs [s]
			l1events	1126602	Number of level 1 events

### 2.1.4 Events

	ccd 0	ccd 1	ccd 2	ccd 3
level 1 events	259505	266252	286286	314559
rejected events	226212	229292	252466	249626
rejected %	87%	86%	88%	79%

	ccd 0	ccd 1	ccd 2	ccd 3
grade 0 events	11127	12270	12012	27463
	4%	4%	4%	8%
grade 1 events	142	123	170	227
	0%	0%	0%	0%
grade 2 events	8438	9202	8361	23677
	3%	3%	2%	7%
grade 3 events	3515	3595	3350	3424
	1%	1%	1%	1%
grade 4 events	3228	3757	3413	3479
	1%	1%	1%	1%
grade 5 events	13825	14490	13218	15545
	5%	5%	4%	4%
grade 6 events	6985	8137	6684	6895
	2%	3%	2%	2%
grade 7 events	212245	214678	239078	233849
	81%	80%	83%	74%

## 2.2 Compared Parameters

Parameter	Planned	Actual	Parameter	Planned	Actual
Instrument	ACIS	ACIS	Obspar format version number	7	7
Detector	ACIS-0123	ACIS-0123	Obspar file type	PREDICTED	ACTUAL
Grating	NONE	NONE	Obspar update status	NONE	UPDATED
Data mode	VFAINT	VFAINT	Number of optional ACIS chips dropped	0	0
Observation mode	POINTING	POINTING	On-chip summing requested	N	N
[deg] Pointing RA	53.121220	53.11826773842989	Subarray requested	NONE	NONE
[deg] Pointing Dec	-27.826695	-27.79922316132946	Alternating exposures requested	N	N
[deg] Pointing Roll	65.001928	65.20924050745276	[s] Primary exposure time	0.000000	3.1
[mm] SIM focus pos	-0.782348	-0.7809083437167272			
[mm] SIM defocus	0	0.001439871863259334			
[mm] SIM translation stage pos	-233.592463	-233.5874344608287			
[mm] SIM translation stage offset	0	-0.005018542100998502			
[s] Observation start time (MET)	527820612.184000	527819250.90874			
Observation start date	2014-09-23T00:49:05	2014-09-23T00:27:30			
[s] Observation end time (MET)	527874450.184000	527875416.81187			
Observation end date	2014-09-23T15:46:23	2014-09-23T16:03:36			
Read mode	TIMED	TIMED			

## 2.3 Aspect

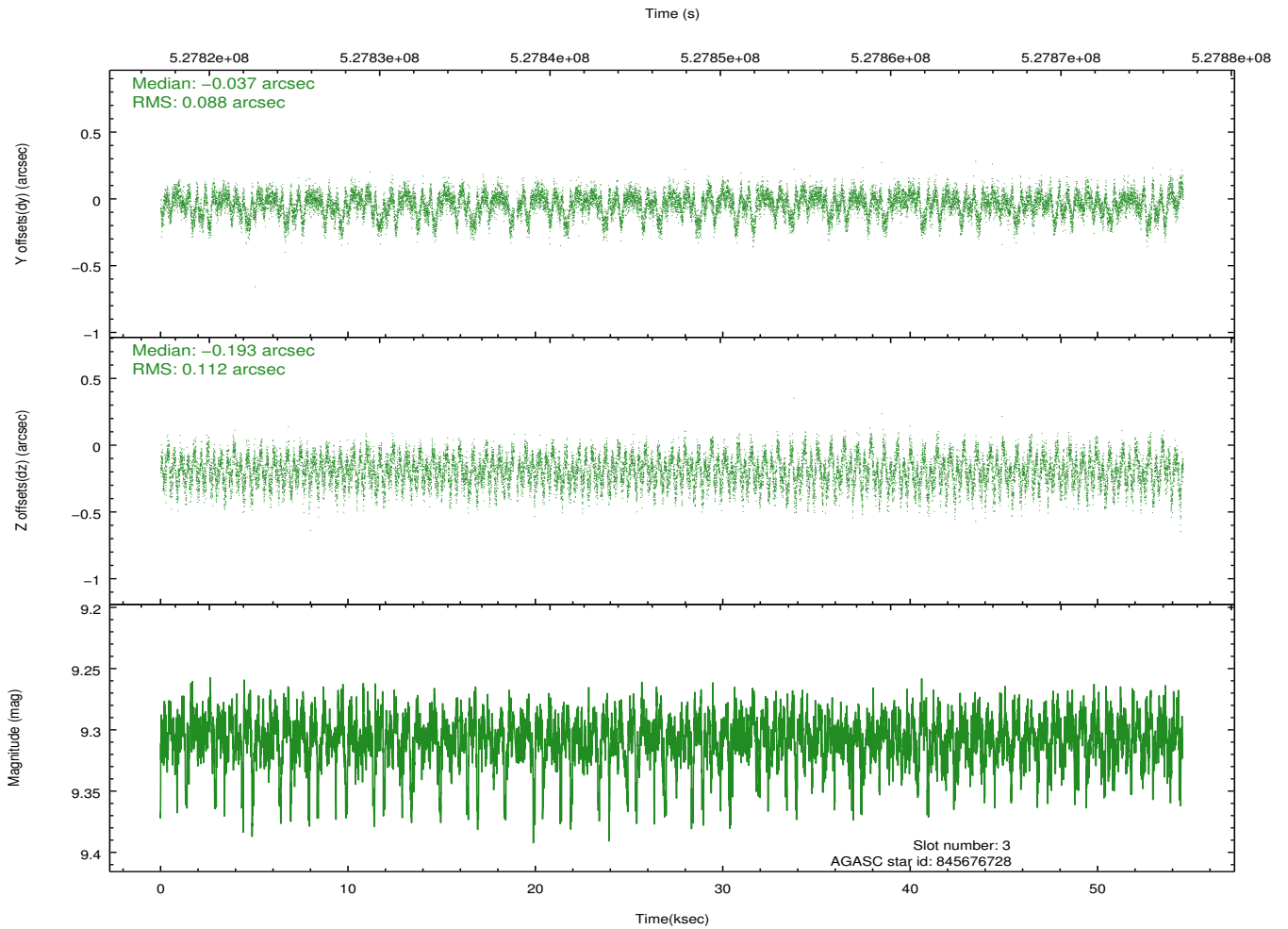
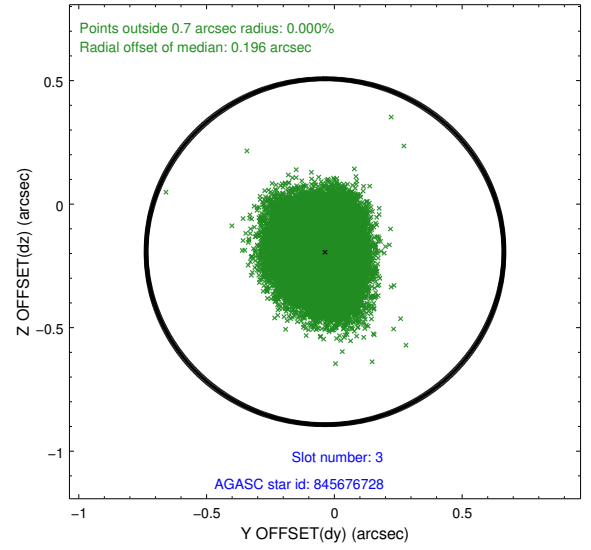
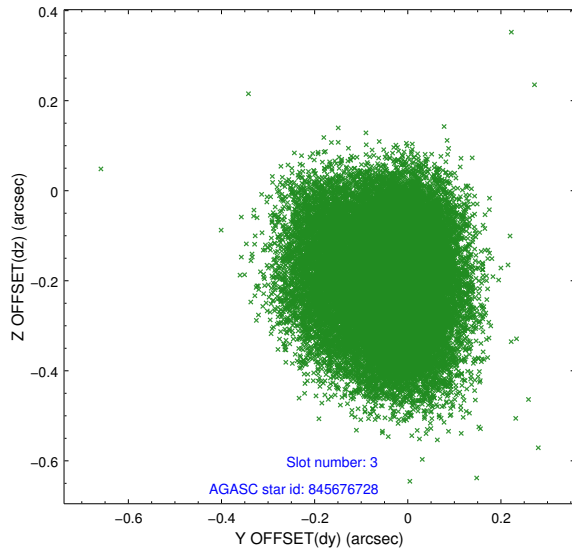


### Slot Statistics

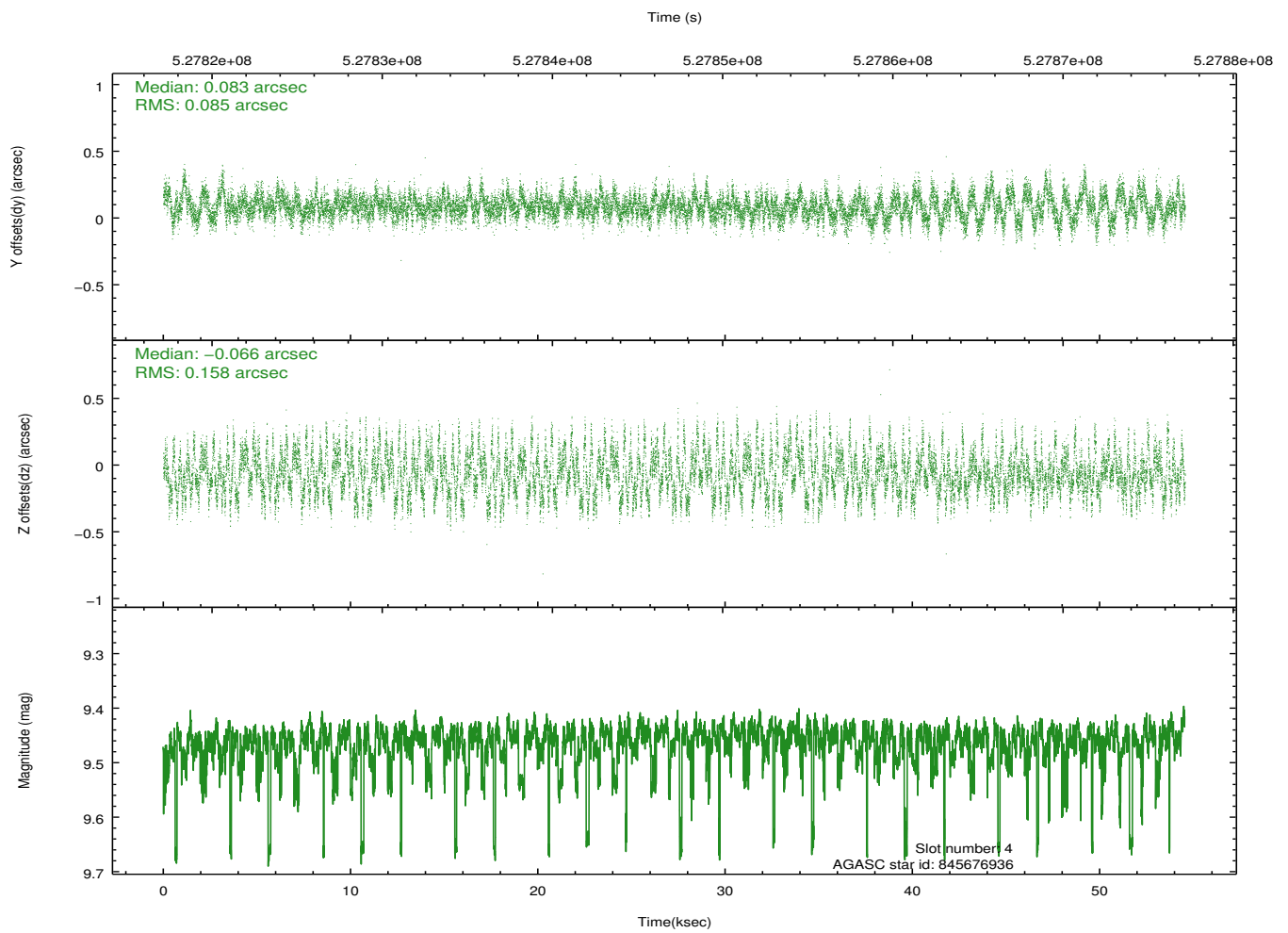
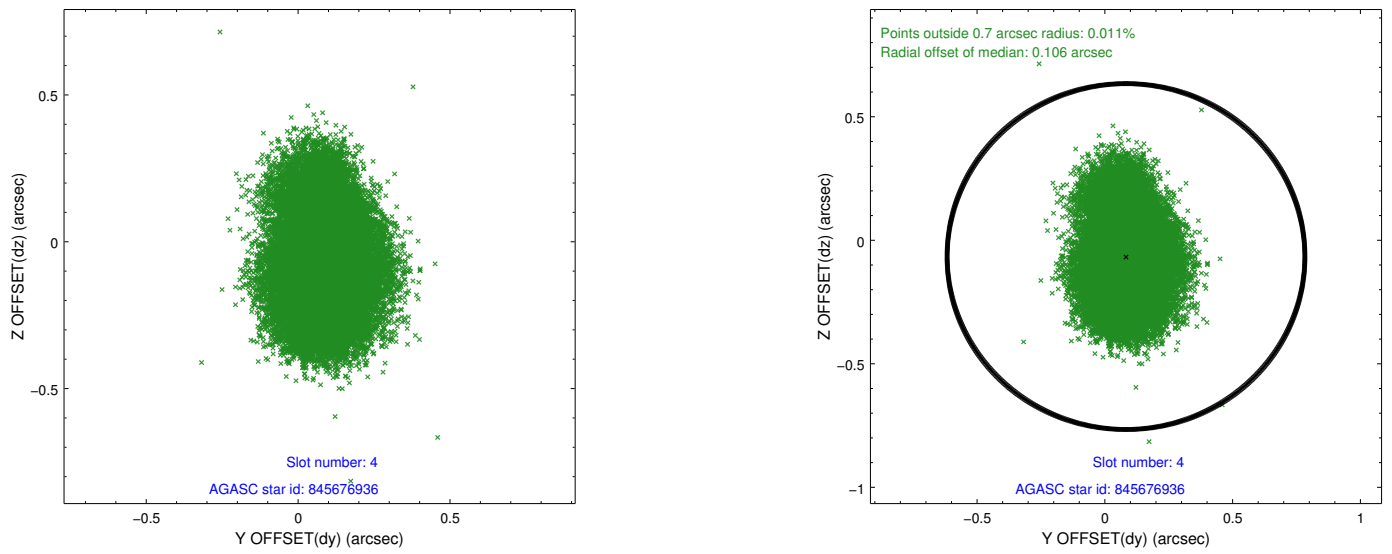
slot	status	id	mag	n_pts	med_dy	med_dz	dr1	dr2	ra	dec	mean_y	mean_z
0	FID	ACIS-I-1	7.13	13308	0.038	0.039	0.011	0.020	0.000000	0.000000	918.94	-842.07
1	FID	ACIS-I-5	7.11	13308	-0.271	0.038	0.010	0.017	0.000000	0.000000	-1829.54	1055.36
2	FID	ACIS-I-6	7.12	13308	0.141	-0.007	0.009	0.020	0.000000	0.000000	384.55	1699.84
3	GUIDE	845676728	9.31	26518	-0.037	-0.193	0.155	0.239	52.877179	-27.664318	200.56	951.85
4	GUIDE	845676936	9.46	26589	0.083	-0.066	0.193	0.312	52.843773	-27.880153	-547.55	717.98
5	GUIDE	845807880	8.77	26608	0.091	0.155	0.108	0.179	53.382027	-27.886093	156.78	-842.57
6	GUIDE	845808496	10.15	26559	-0.065	0.039	0.247	0.431	53.777917	-27.725281	1210.90	-1744.43
7	GUIDE	845808968	9.87	25793	-0.040	0.083	0.321	0.502	54.016598	-27.589085	1973.80	-2231.85

## 2.4 Star Slots

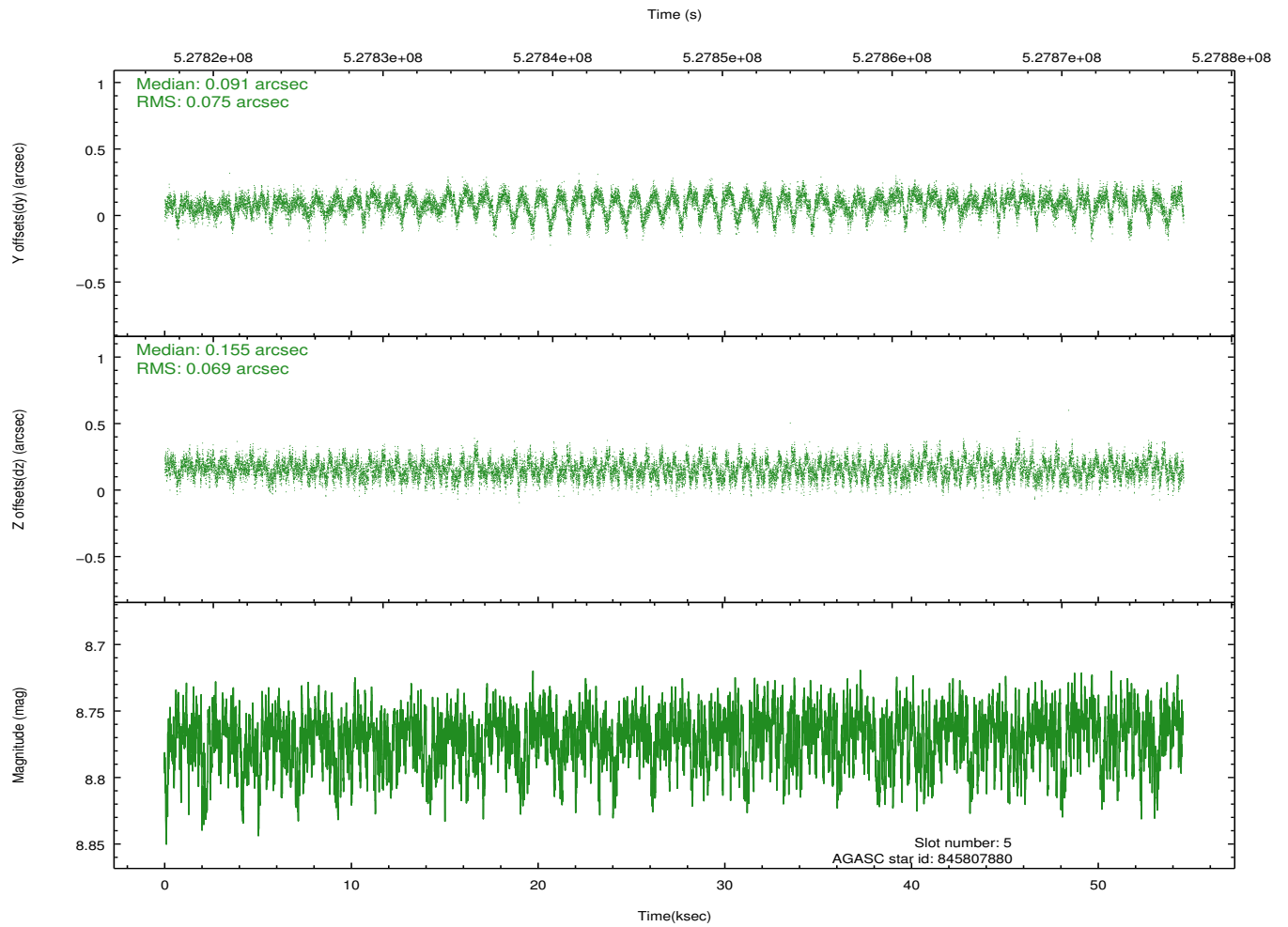
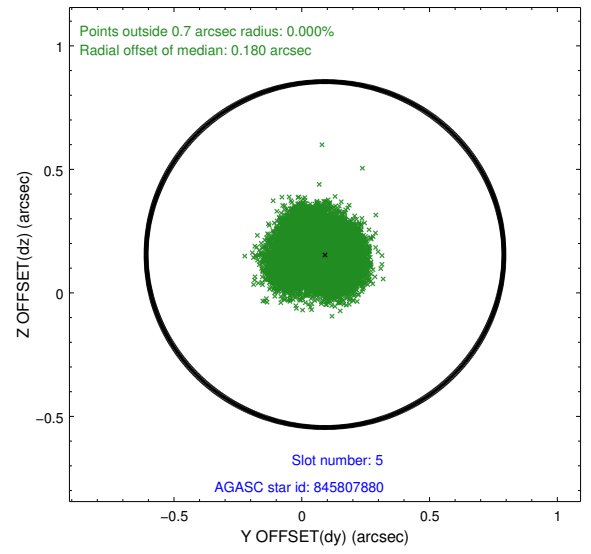
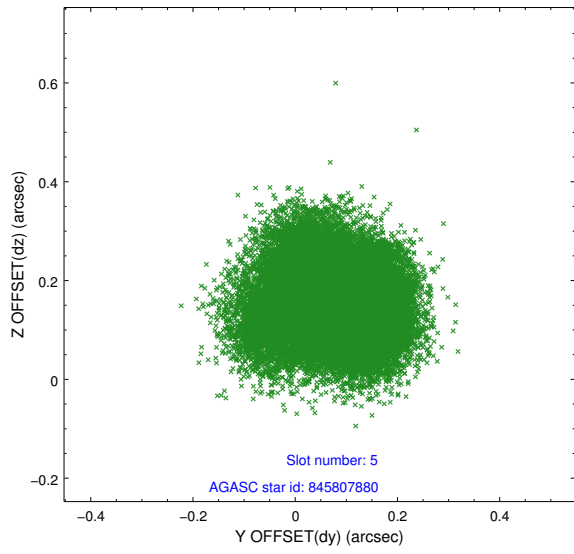
### 2.4.1 Slot 3



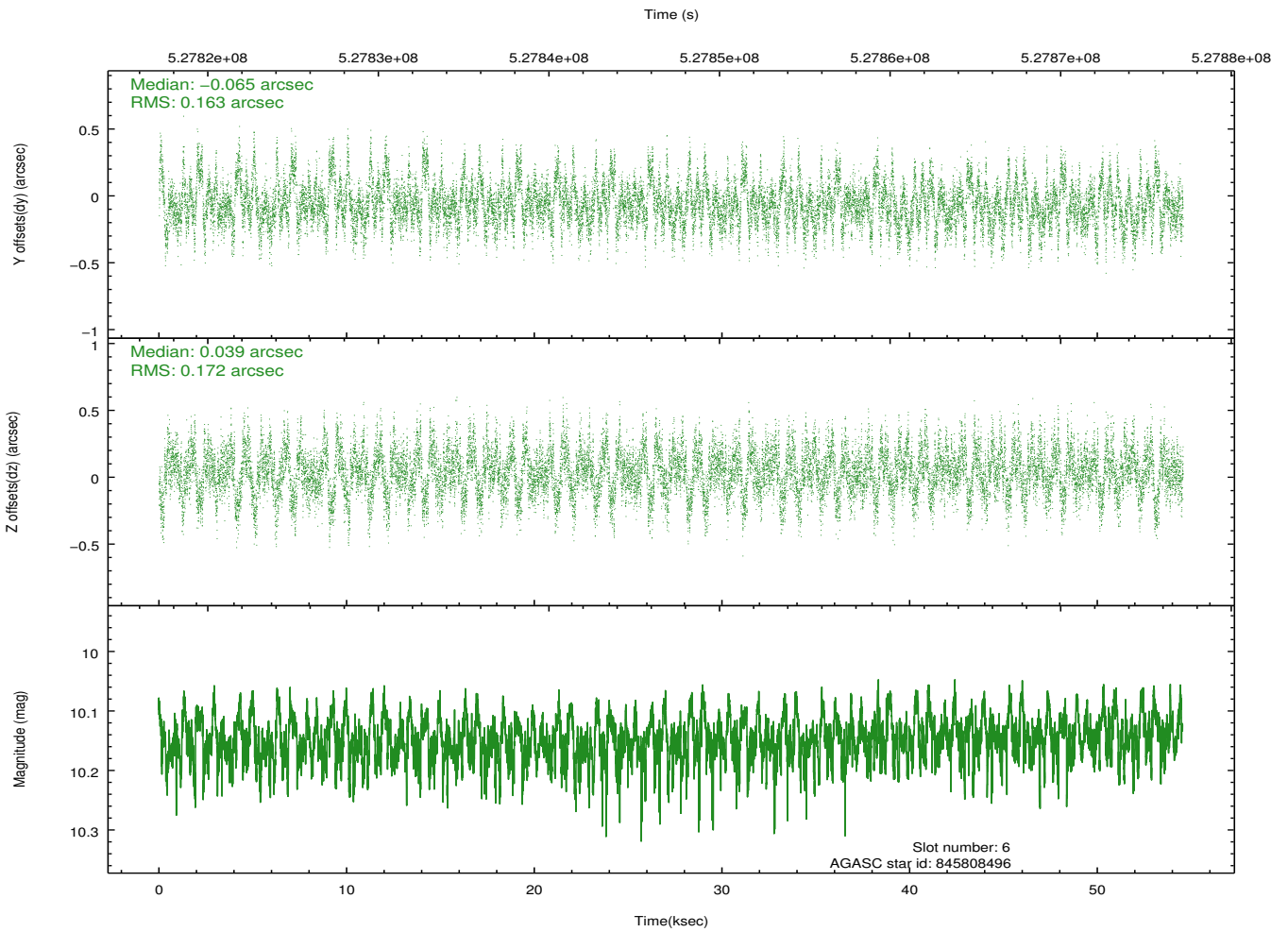
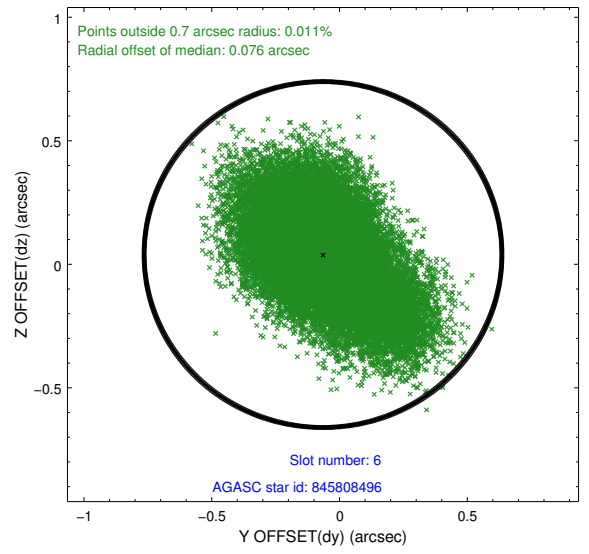
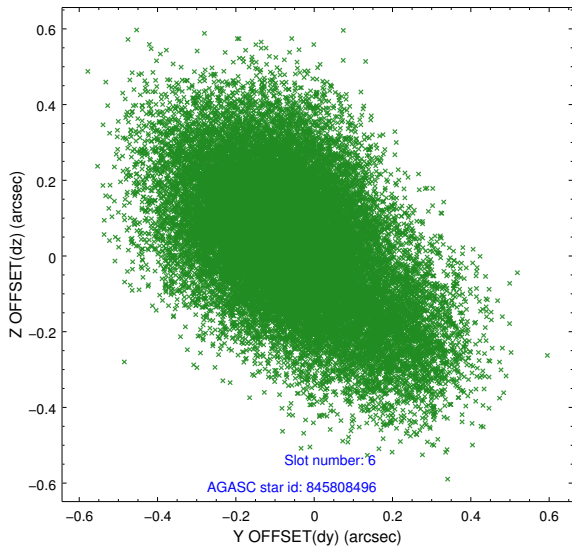
## 2.4.2 Slot 4



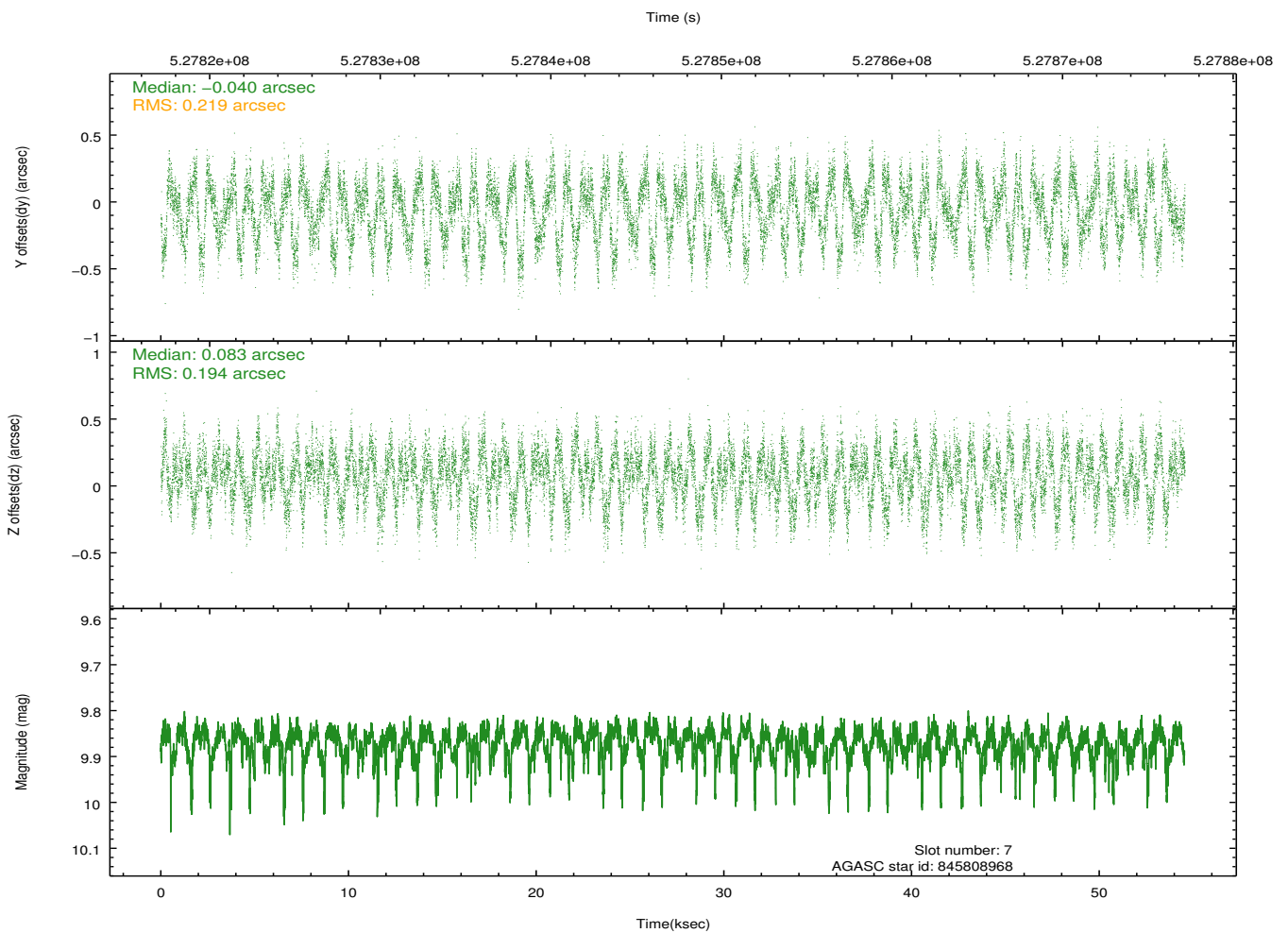
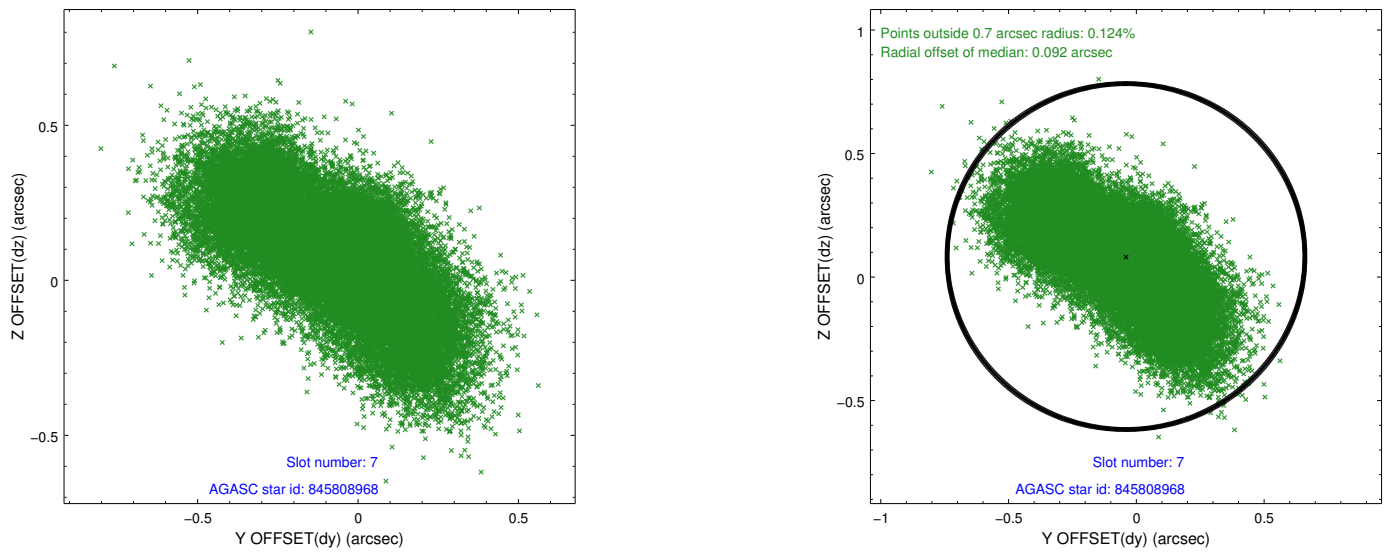
### 2.4.3 Slot 5



### 2.4.4 Slot 6

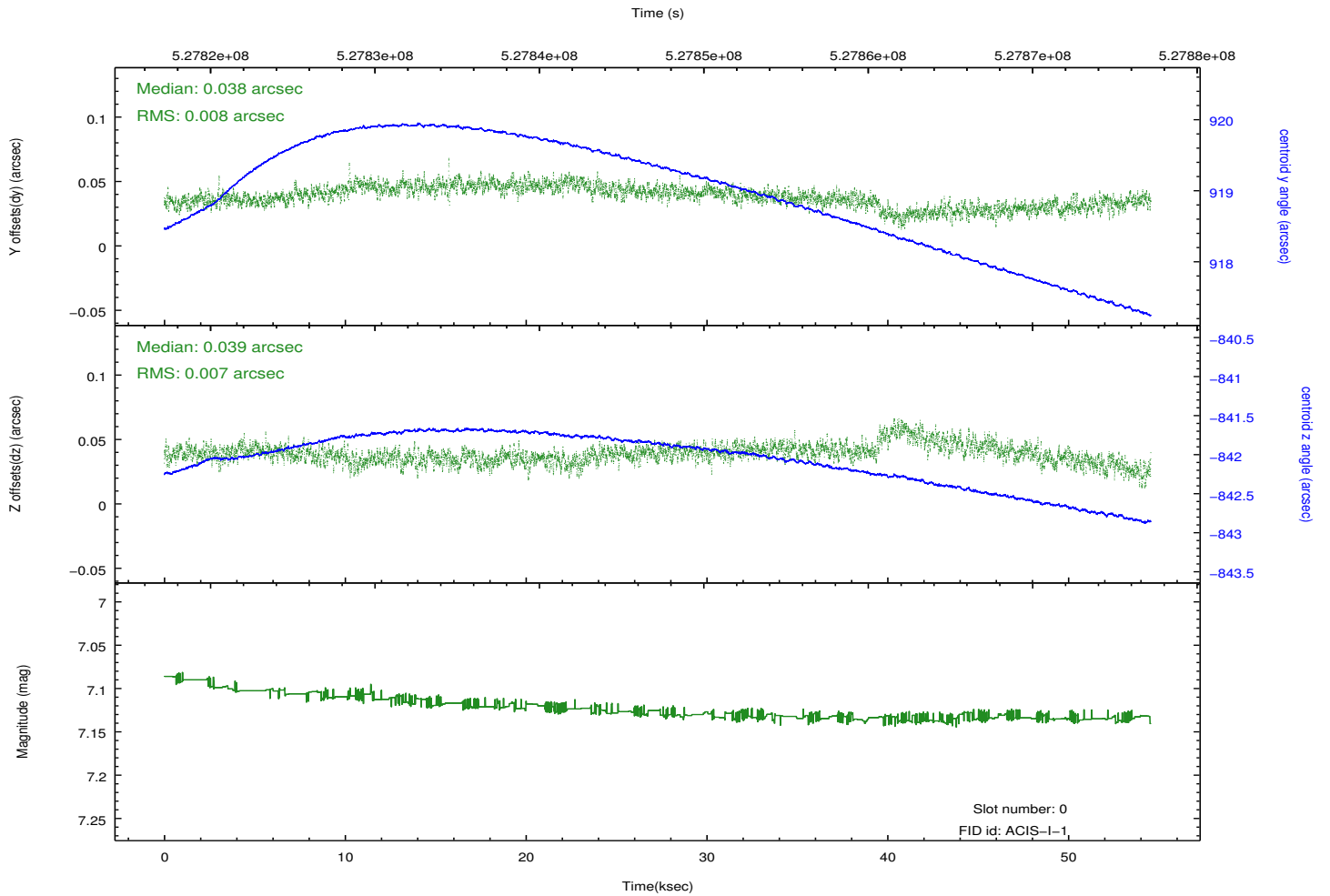
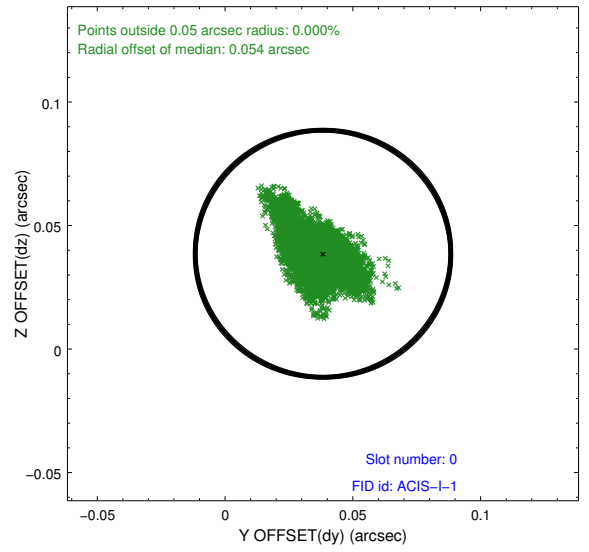
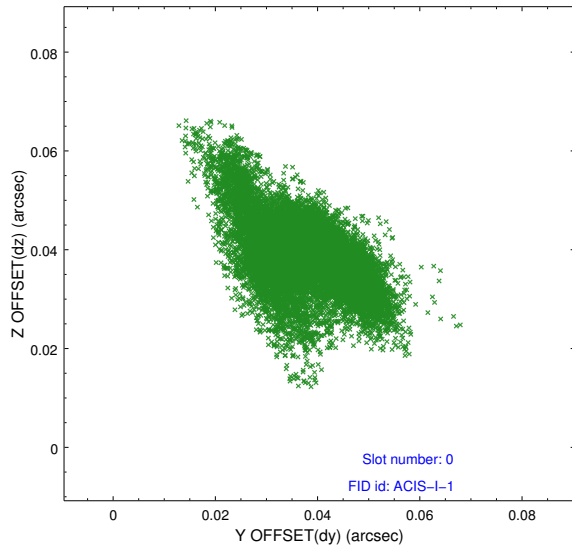


## 2.4.5 Slot 7

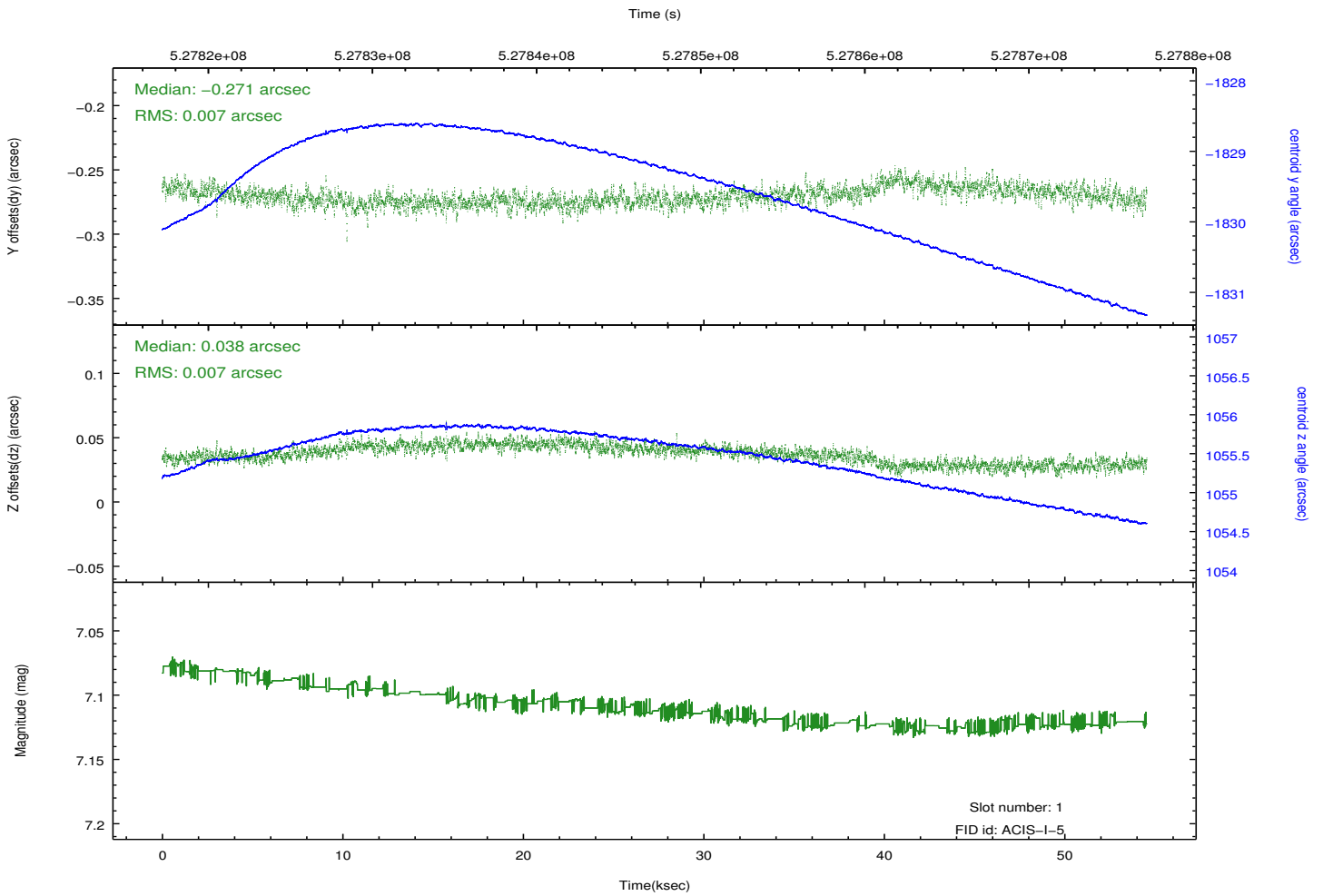
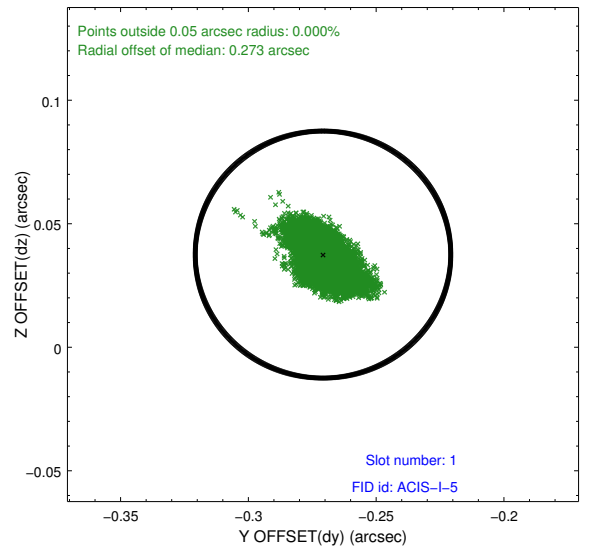
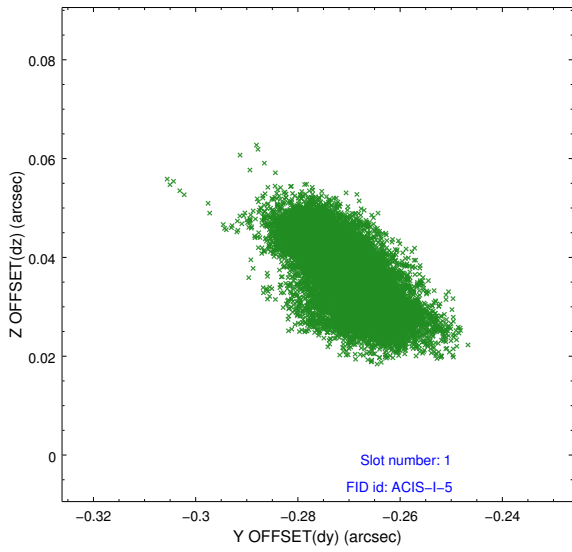


## 2.5 FID Slots

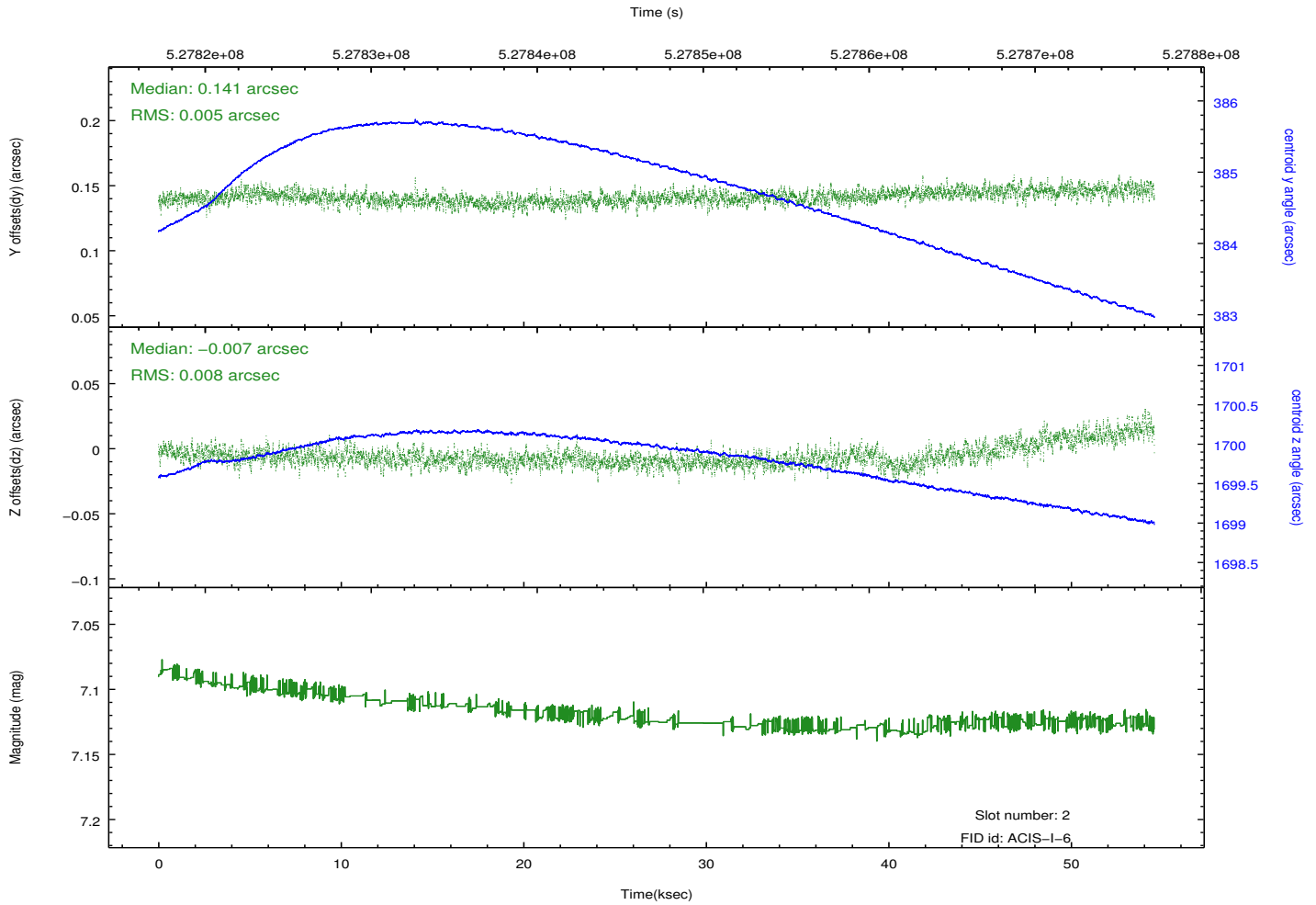
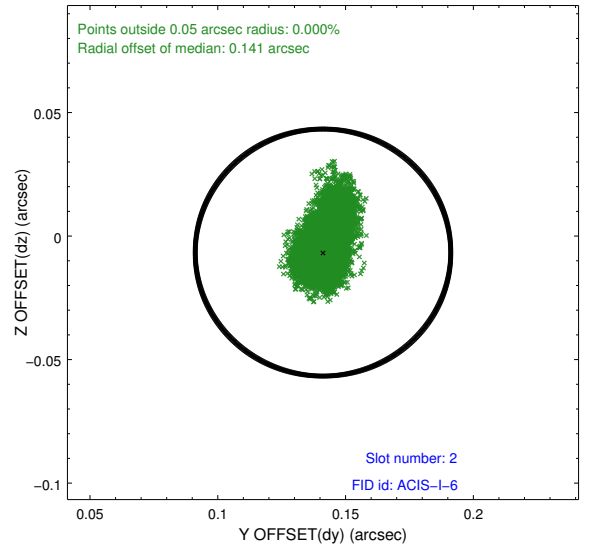
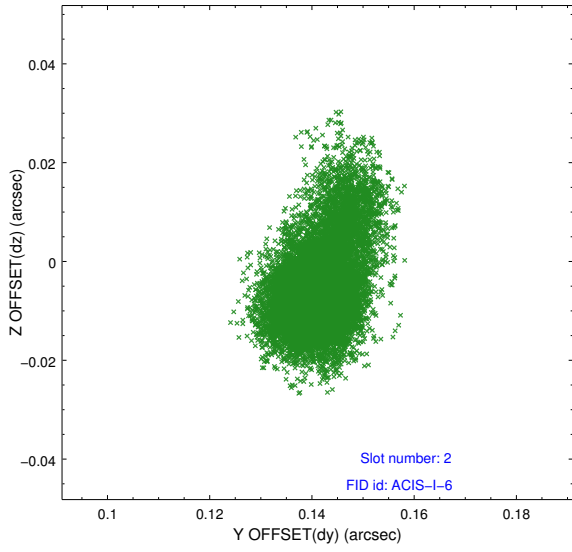
### 2.5.1 Slot 0



## 2.5.2 Slot 1



### 2.5.3 Slot 2



# A Summary

## A.1 Status

V&V Scientist	Joy Nichols
V&V Date (YYYY-MM-DD)	2014.09.24
V&V Edition	1
V&V Disposition and Status	OK
V&V Charge Time	53.924289100707

## A.2 Comments