

V&V Reference Report

L2 ASCDS Version : 10.2.2

Observation 16623 - L2 Version 2
Chandra X-Ray Center

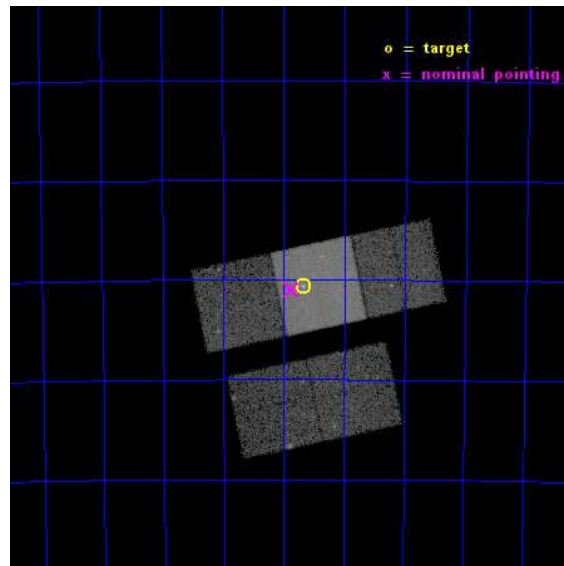
L2 Processing Date : Dec 11 2014

Contents

1	Front	2
2	OBI	3
2.1	OBI	3
2.1.1	Images	3
2.1.2	Bias	3
2.1.3	Parameters	4
2.1.4	Events	4
2.2	Compared Parameters	5
2.3	Aspect	6
2.4	Star Slots	9
2.4.1	Slot 3	9
2.4.2	Slot 4	10
2.4.3	Slot 5	11
2.4.4	Slot 6	12
2.4.5	Slot 7	13
2.5	FID Slots	14
2.5.1	Slot 0	14
2.5.2	Slot 1	15
2.5.3	Slot 2	16
A	Summary	17
A.1	Status	17
A.2	Comments	17

1 Front

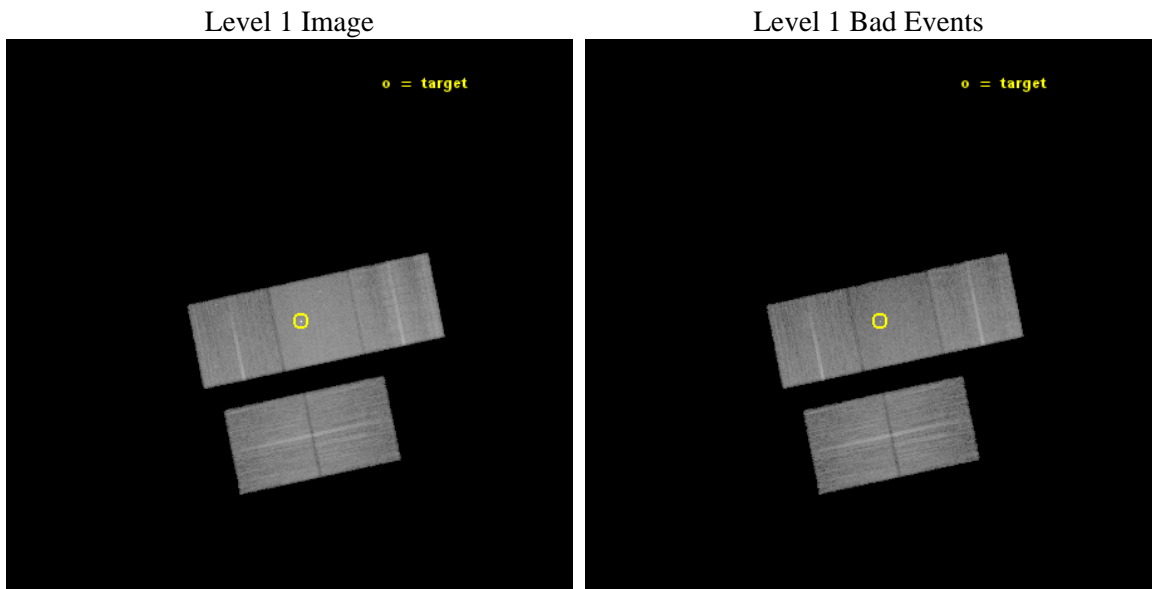
seq_num	702963	Sequence number
obs_id	16623	Observation id
title	Deep Chandra Imaging of Two Youngest Radio Sources	Proposal title
observer	Dr Aneta Siemiginowska	Principal investigator
object	PKS 1718-649	Source name
dtcycle	0	
cycle	P	events from which exps? Prim/Second/Both
ra_targ	260.920833	Observer's specified target RA [deg]
dec_targ	-65.010167	Observer's specified target Dec [deg]
ra_nom	260.96811892806	Nominal RA [deg]
dec_nom	-65.016058013919	Nominal Dec [deg]
roll_nom	348.1995009544	Nominal Roll [deg]
revision	2	Processing version of data
ontime	33473.467817605	Sum of GTIs [s]
livetime	33036.112317759	Livetime [s]
ontime2	33473.303657591	Sum of GTIs [s]
ontime3	33473.385737598	Sum of GTIs [s]
ontime6	33473.426777601	Sum of GTIs [s]
ontime7	33473.467817605	Sum of GTIs [s]
ontime8	33470.203717232	Sum of GTIs [s]
l2events	159324	Number of level 2 events



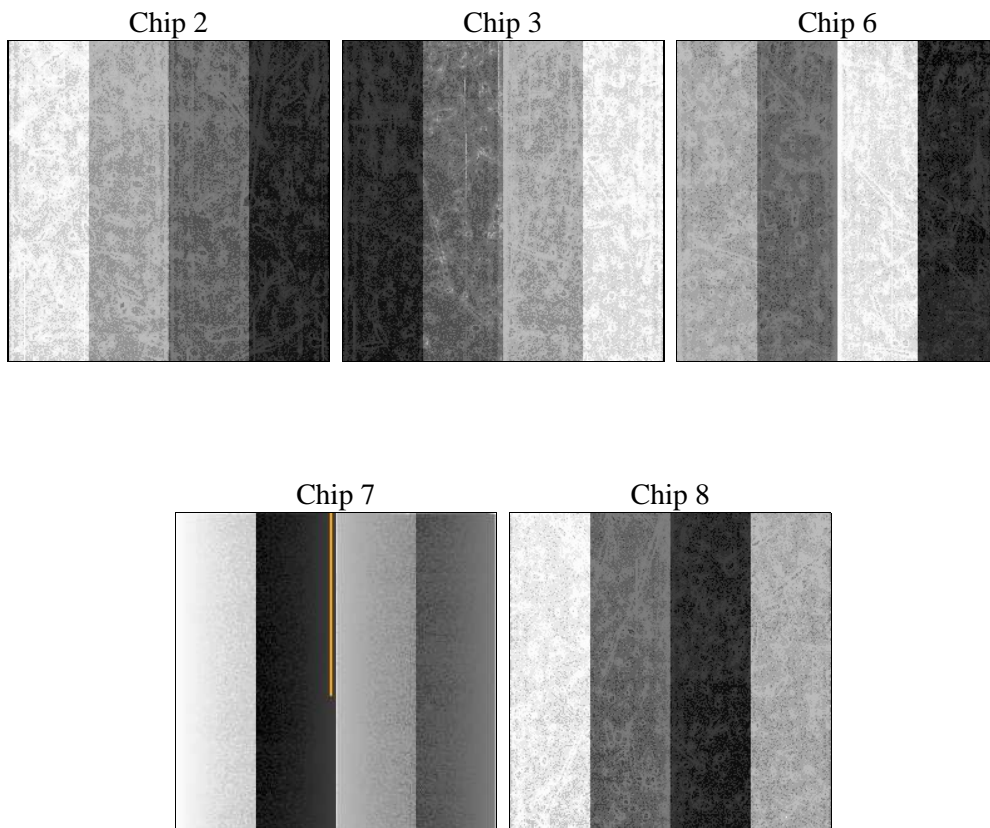
2 OBI

2.1 OBI

2.1.1 Images



2.1.2 Bias



2.1.3 Parameters

obi_num	0	Obi number	sched_exp_time	33400.000000	[s] Scheduled observation exposure time
ascdsver	10.3.1	Processing system revision	ontime	33473.467817605	Sum of GTIs [s]
caldbver	4.6.4	 	ontime2	33473.303657591	Sum of GTIs [s]
date	2014-12-12T02:44:11	Date and time of file creation	ontime3	33473.385737598	Sum of GTIs [s]
revision	2	Processing version of data	ontime6	33473.426777601	Sum of GTIs [s]
			ontime7	33473.467817605	Sum of GTIs [s]
			ontime8	33470.203717232	Sum of GTIs [s]
			l1events	859094	Number of level 1 events

2.1.4 Events

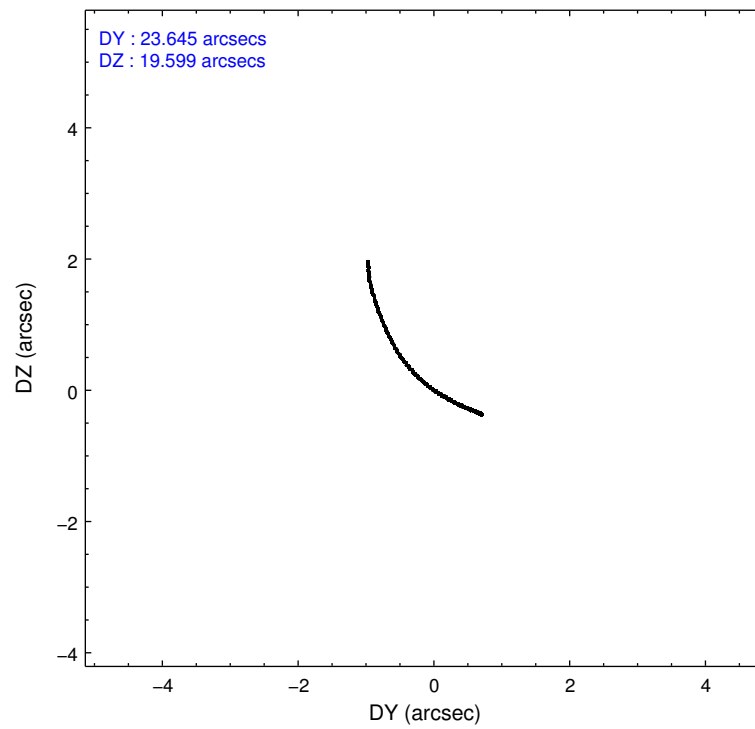
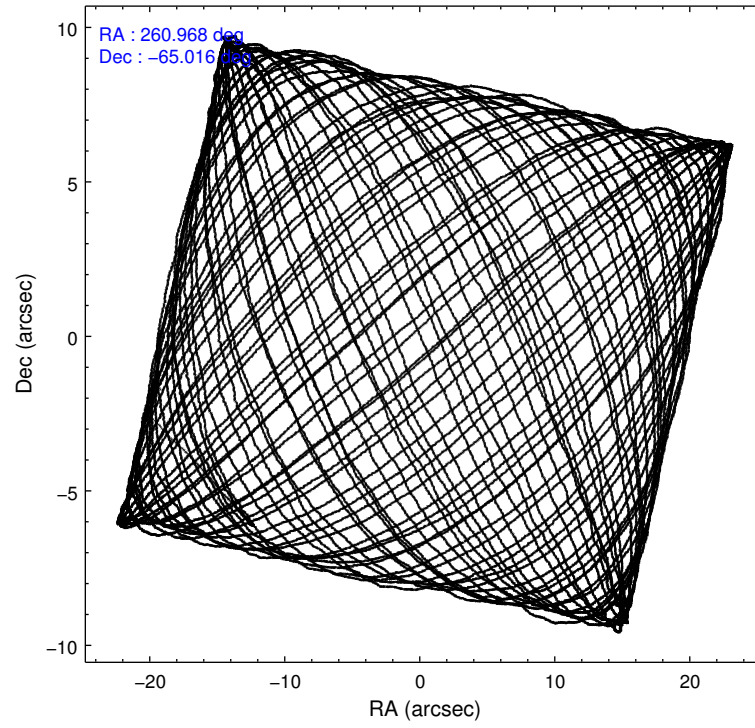
	ccd 2	ccd 3	ccd 6	ccd 7	ccd 8
level 1 events	147789	143032	151127	215272	201874
rejected events	129889	125487	131824	119704	149111
rejected %	87%	87%	87%	55%	73%

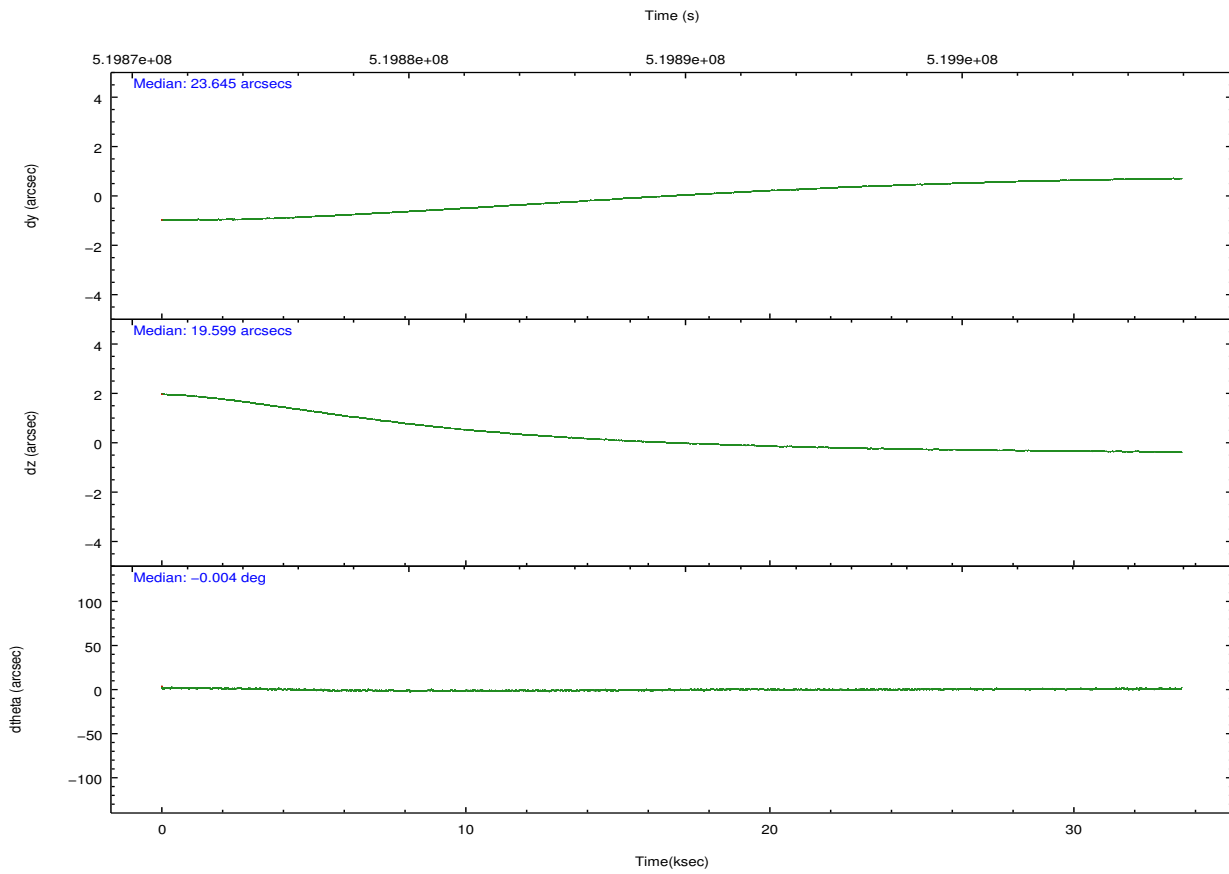
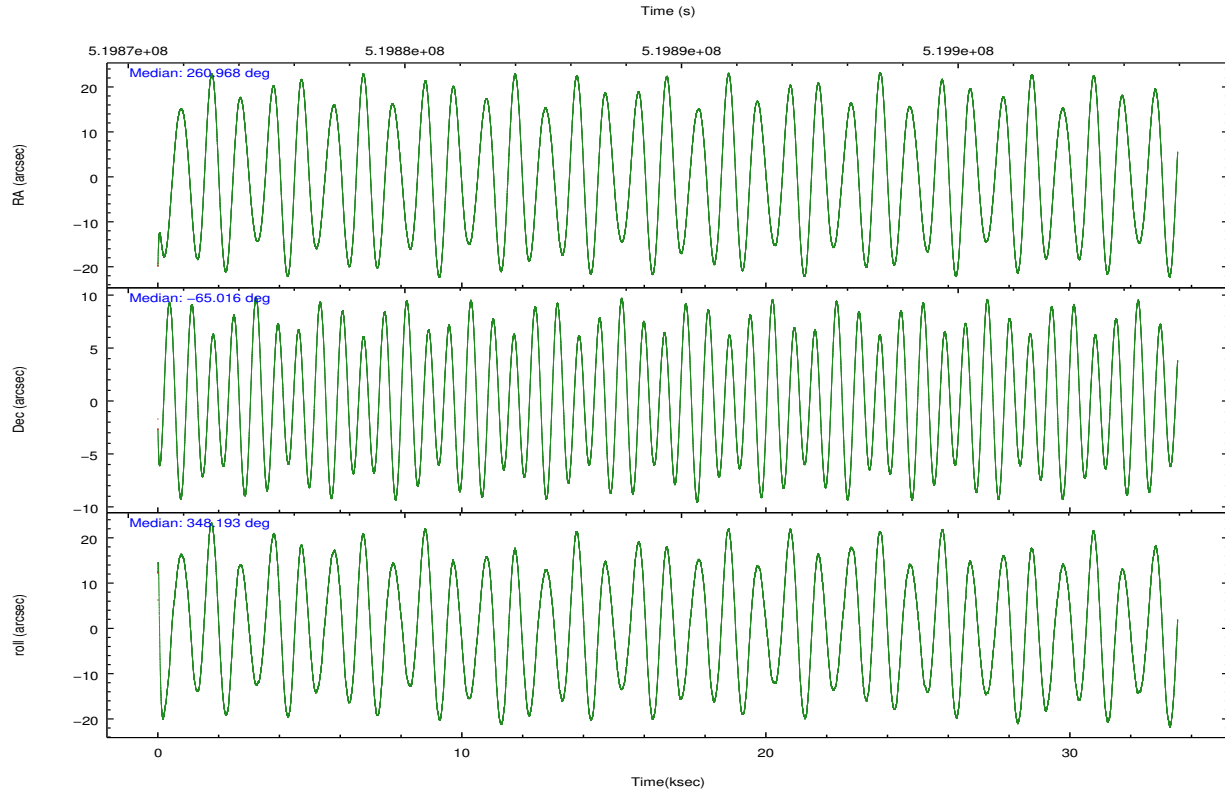
	ccd 2	ccd 3	ccd 6	ccd 7	ccd 8
grade 0 events	6660	6327	6964	9486	15585
	4%	4%	4%	4%	7%
grade 1 events	87	86	75	246	126
	0%	0%	0%	0%	0%
grade 2 events	4333	3979	4197	19714	12420
	2%	2%	2%	9%	6%
grade 3 events	1739	1854	1903	8087	5449
	1%	1%	1%	3%	2%
grade 4 events	1803	1790	1808	7920	5152
	1%	1%	1%	3%	2%
grade 5 events	6470	8221	8442	21699	11628
	4%	5%	5%	10%	5%
grade 6 events	3365	3596	4434	50371	14162
	2%	2%	2%	23%	7%
grade 7 events	123332	117179	123304	97749	137352
	83%	81%	81%	45%	68%

2.2 Compared Parameters

Parameter	Planned	Actual	Parameter	Planned	Actual
Instrument	ACIS	ACIS	Obspar format version number	7	7
Detector	ACIS-23678	ACIS-23678	Obspar file type	PREDICTED	ACTUAL
Grating	NONE	NONE	Obspar update status	NONE	UPDATED
Data mode	VFAINT	VFAINT	CCD I0 on	N	N
Observation mode	POINTING	POINTING	CCD I1 on	N	N
[deg] Pointing RA	260.906933	260.9681189280603	CCD I2 on	O1	Y
[deg] Pointing Dec	-65.024930	-65.01605801391922	CCD I3 on	O2	Y
[deg] Pointing Roll	347.987402	348.1995009544037	CCD S0 on	N	N
[mm] SIM focus pos	-0.684267	-0.6828225247311905	CCD S1 on	N	N
[mm] SIM defocus	0	0.001444936568705701	CCD S2 on	Y	Y
[mm] SIM translation stage pos	-190.132523	-190.1425803651734	CCD S3 on	Y	Y
[mm] SIM translation stage offset	0	0.01005778216563158	CCD S4 on	Y	Y
[s] Observation start time (MET)	519872881.184000	519871730.00567	CCD S5 on	N	N
Observation start date	2014-06-23T01:06:54	2014-06-23T00:48:50	Number of optional ACIS chips dropped	0	0
[s] Observation end time (MET)	519906281.184000	519907419.48264	On-chip summing requested	N	N
Observation end date	2014-06-23T10:23:34	2014-06-23T10:43:39	Subarray requested	NONE	NONE
Read mode	TIMED	TIMED	Alternating exposures requested	N	N
			[s] Primary exposure time	0.000000	3.1

2.3 Aspect





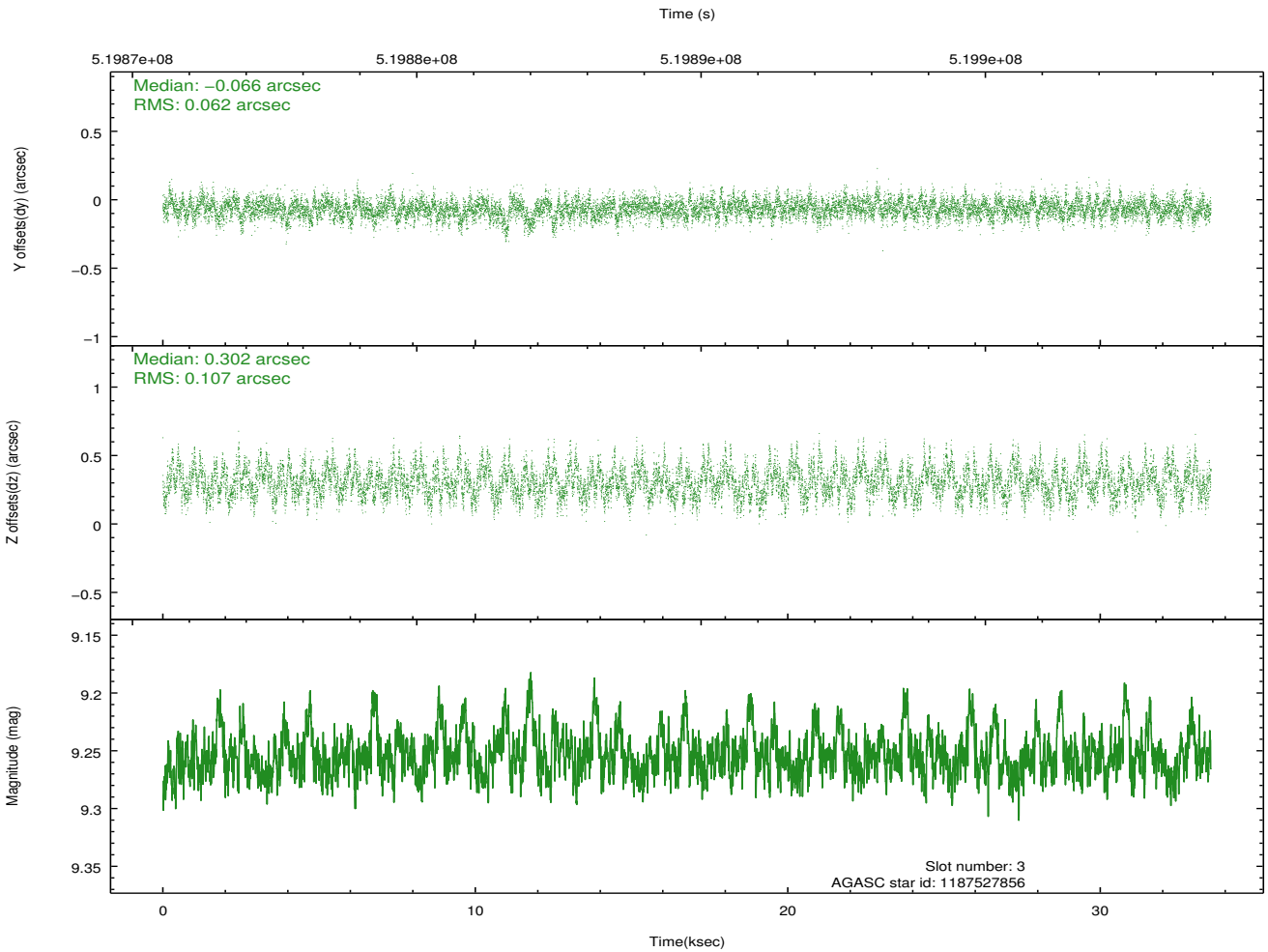
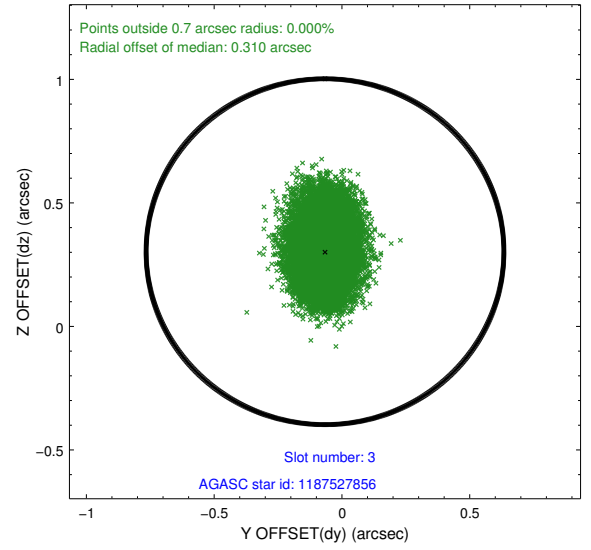
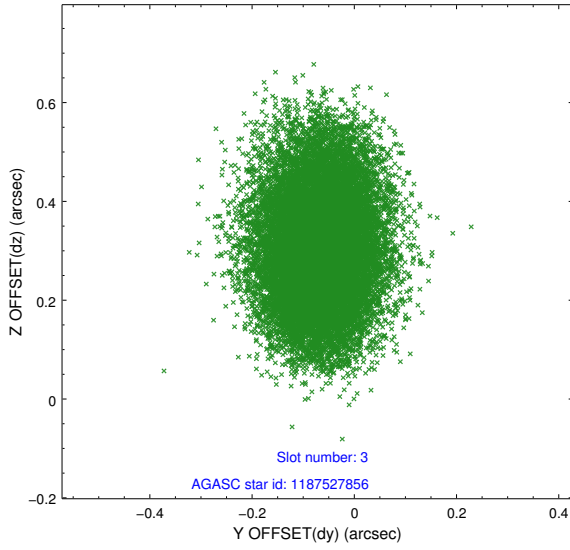
Slot Statistics

slot	status	used	id	mag	n_pts	med_dy	med_dz	dr1	dr2	ra	dec	mean_y	mean_z
0	FID		ACIS-S-2	6.97	8182	-0.149	-0.019	0.031	0.046	0.000000	0.000000	-776.92	-1741.38
1	FID		ACIS-S-4	7.06	8182	0.328	0.078	0.028	0.067	0.000000	0.000000	2136.80	167.15
2	FID		ACIS-S-5	7.08	8182	-0.201	-0.052	0.011	0.018	0.000000	0.000000	-1829.76	160.74
3	GUIDE	used	1187527856	9.25	16354	-0.066	0.302	0.131	0.218	260.889266	-65.511869	339.71	-1719.53
4	GUIDE	used	1187533456	8.70	16360	0.215	0.033	0.080	0.129	260.686036	-64.949110	-385.35	195.63
5	GUIDE	used	1187655104	6.86	16363	-0.262	-0.443	0.072	0.109	262.019924	-64.951088	1607.14	598.43
6	GUIDE	used	1187669496	9.21	16356	-0.083	-0.043	0.143	0.237	261.750446	-64.729734	1048.80	1300.94
7	GUIDE	used	1188064872	7.14	16360	0.196	0.146	0.100	0.156	260.990080	-65.702137	628.97	-2358.50

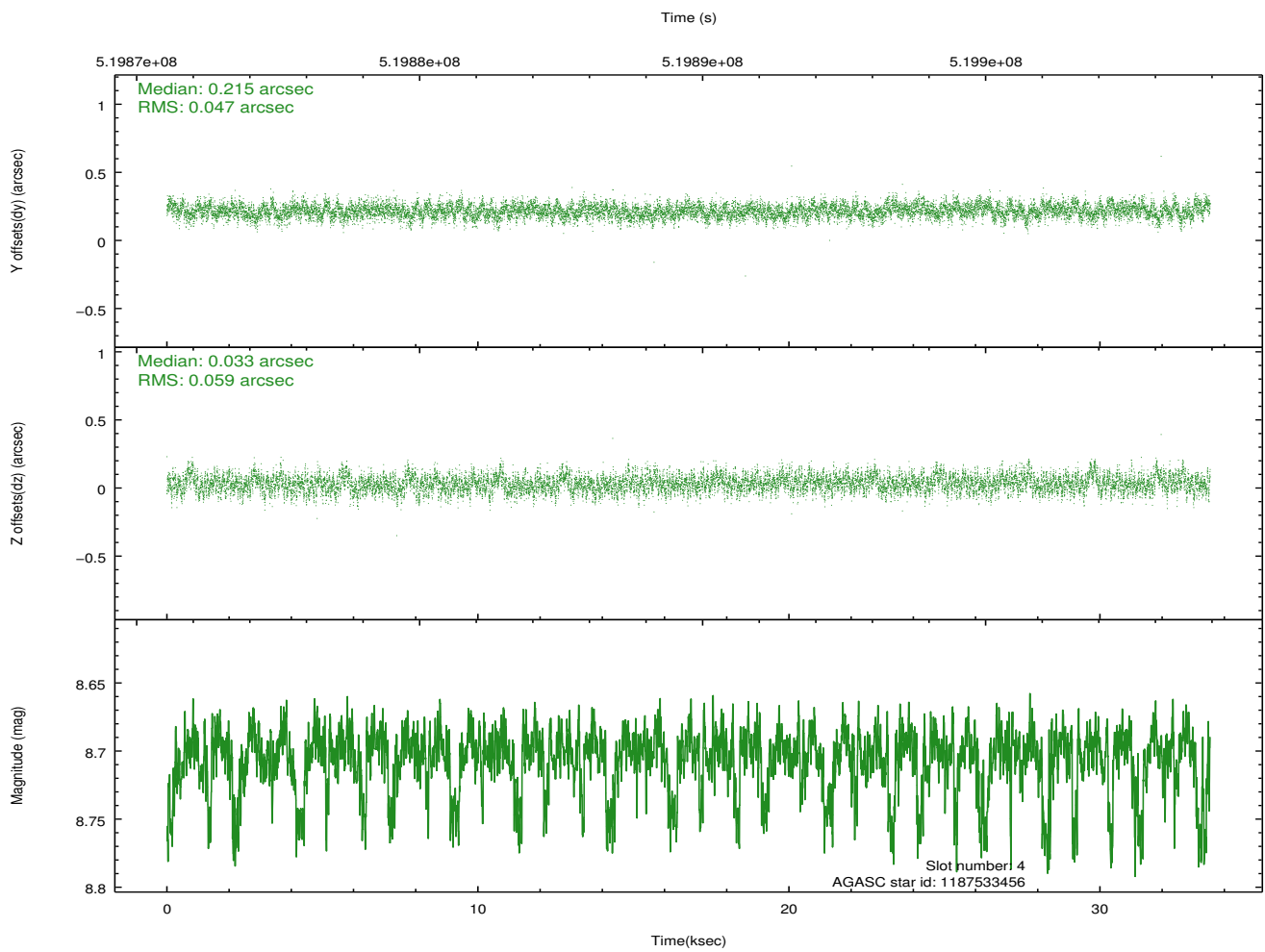
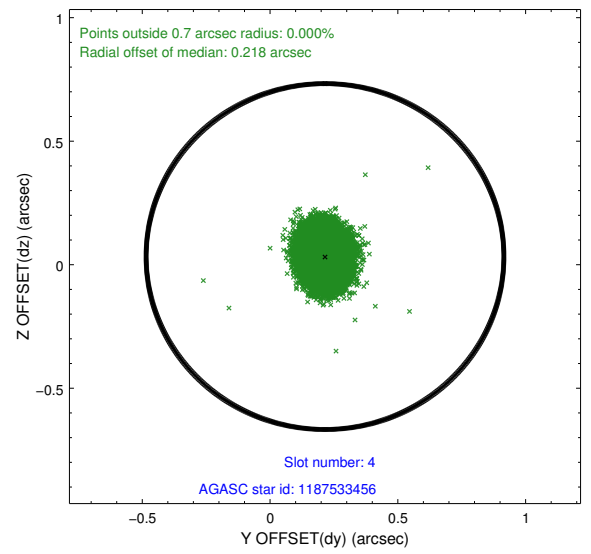
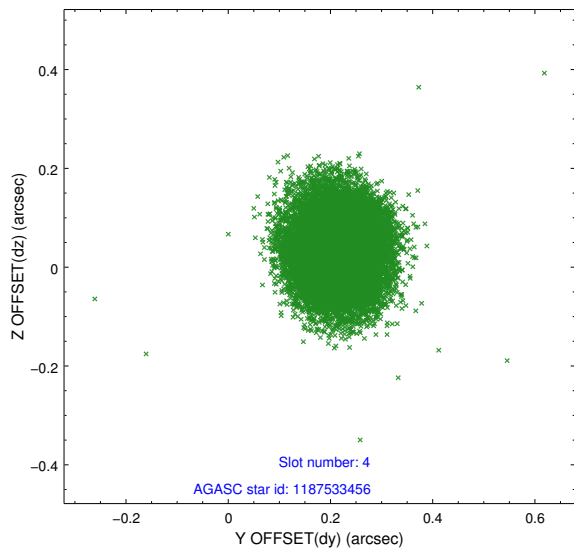
∞

2.4 Star Slots

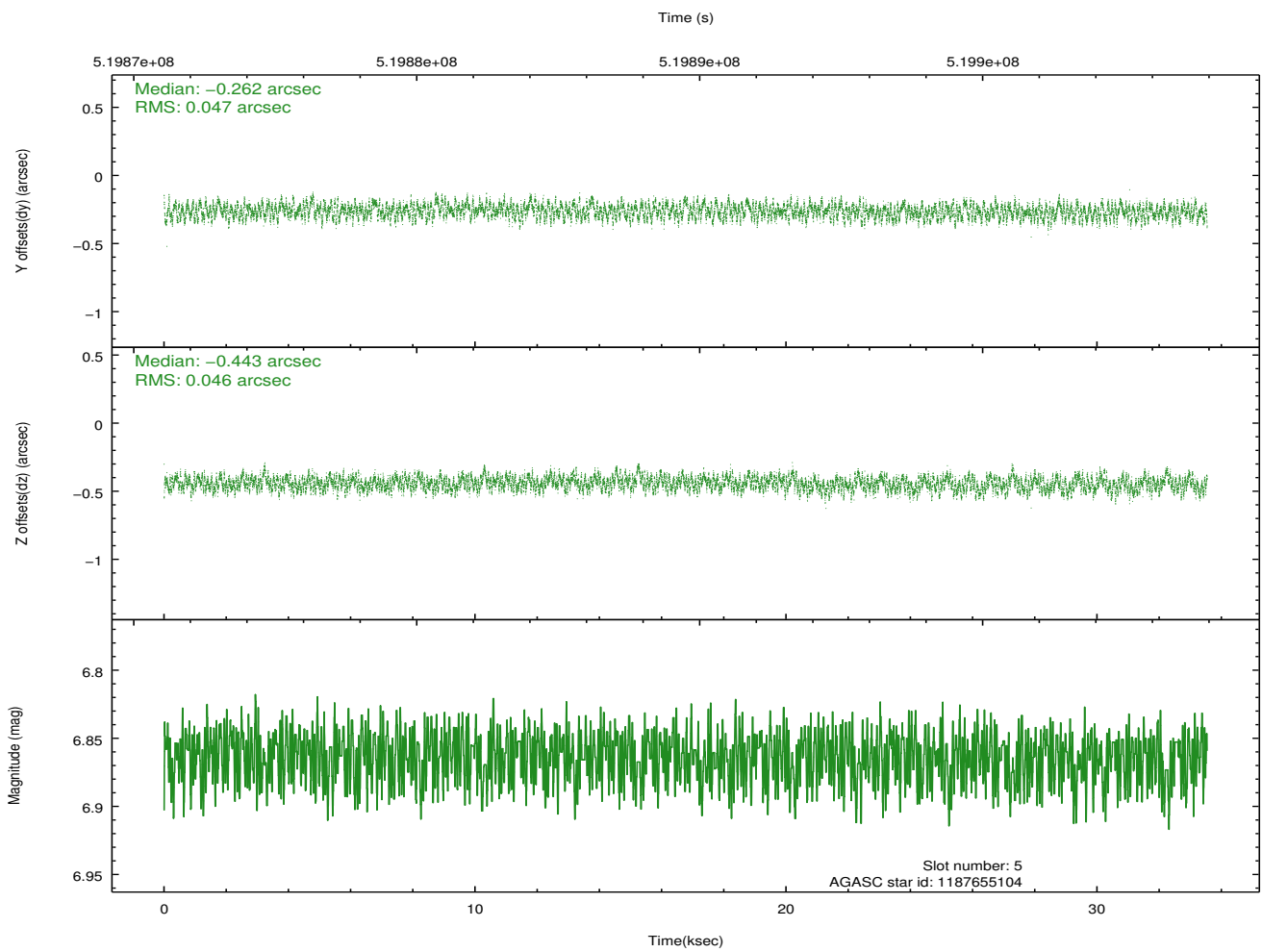
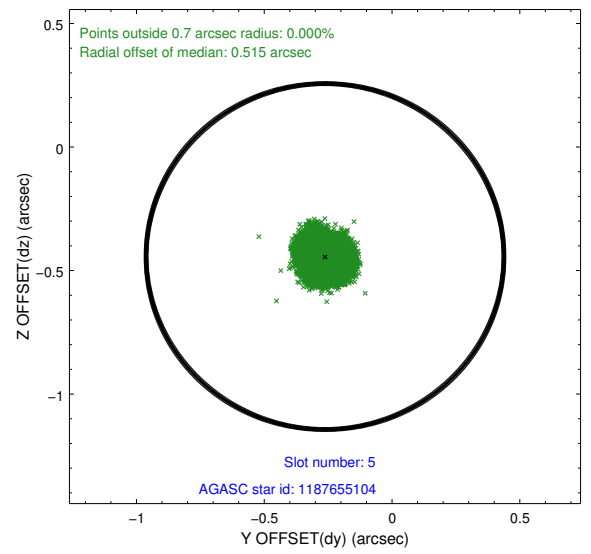
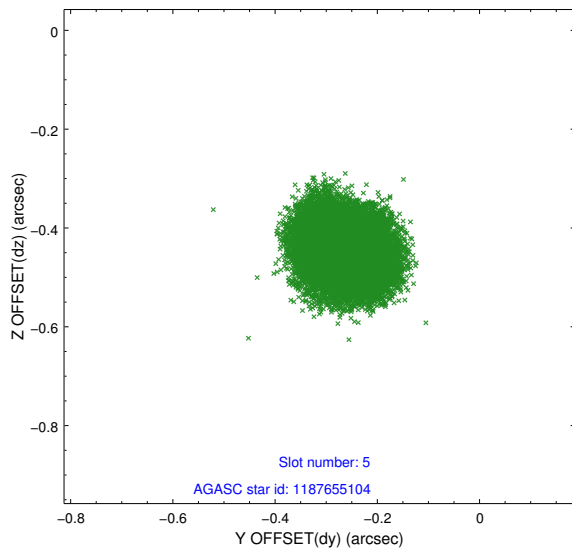
2.4.1 Slot 3



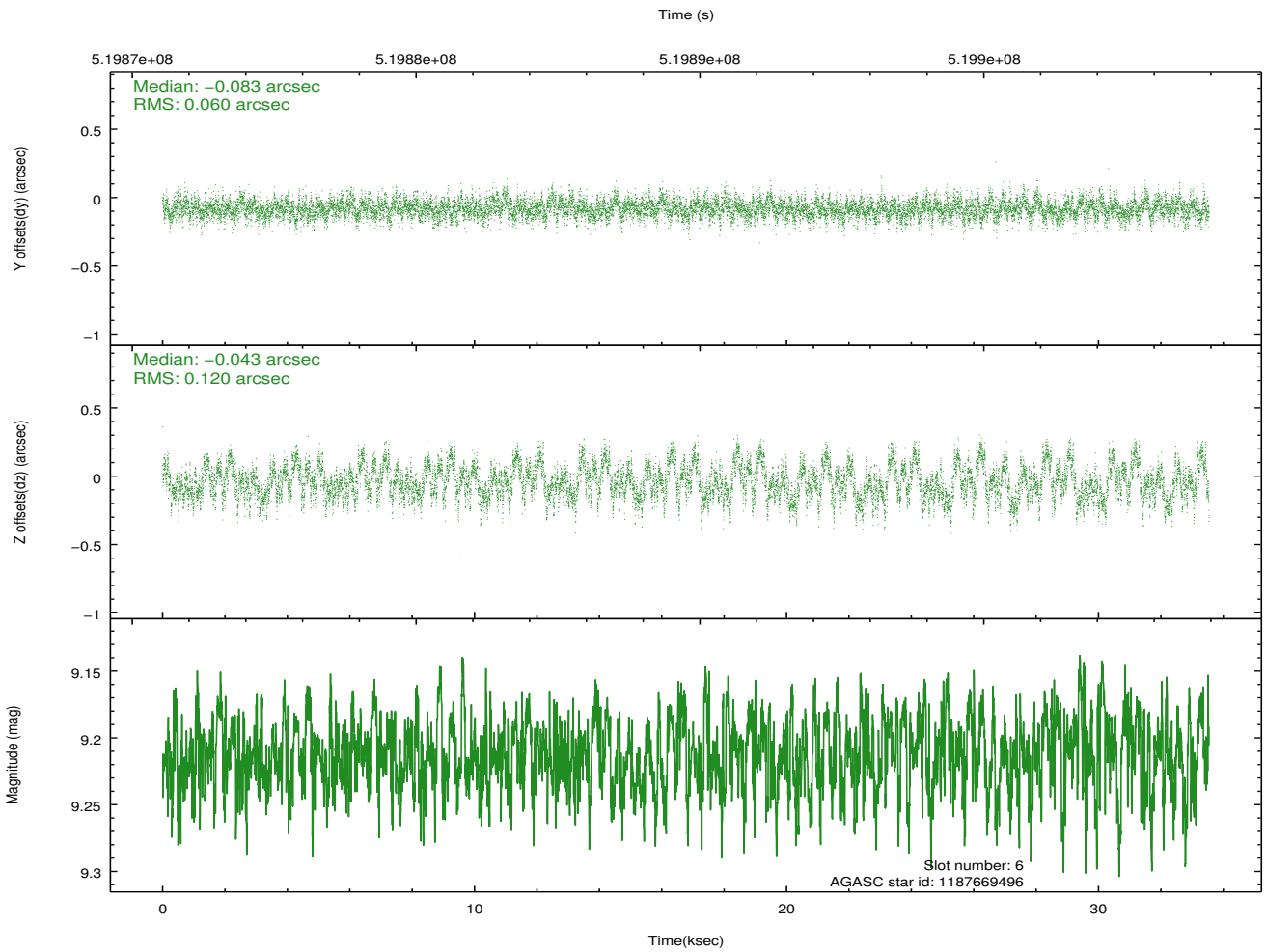
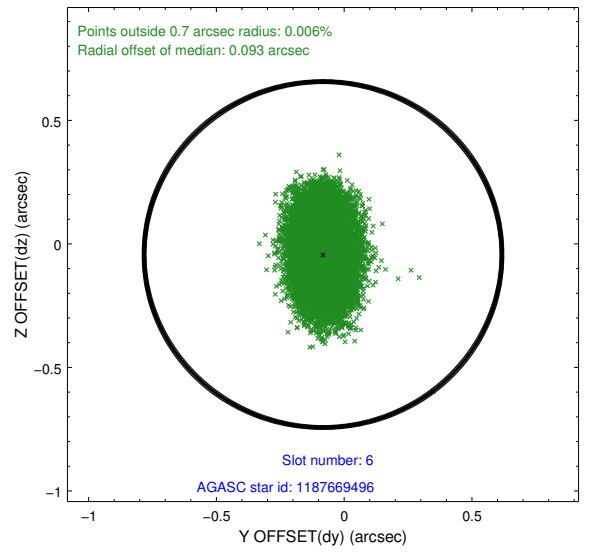
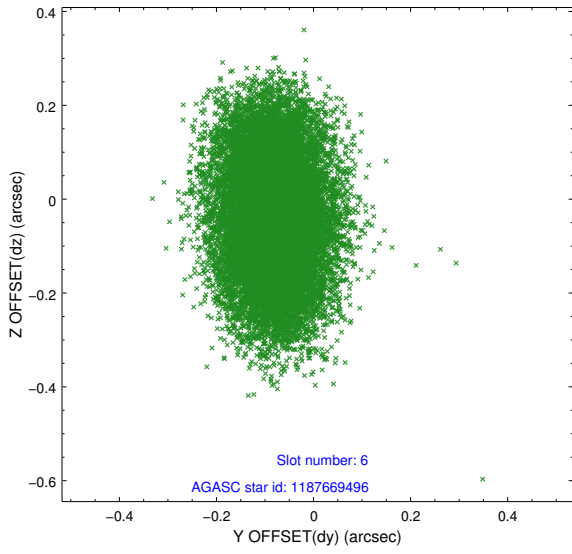
2.4.2 Slot 4



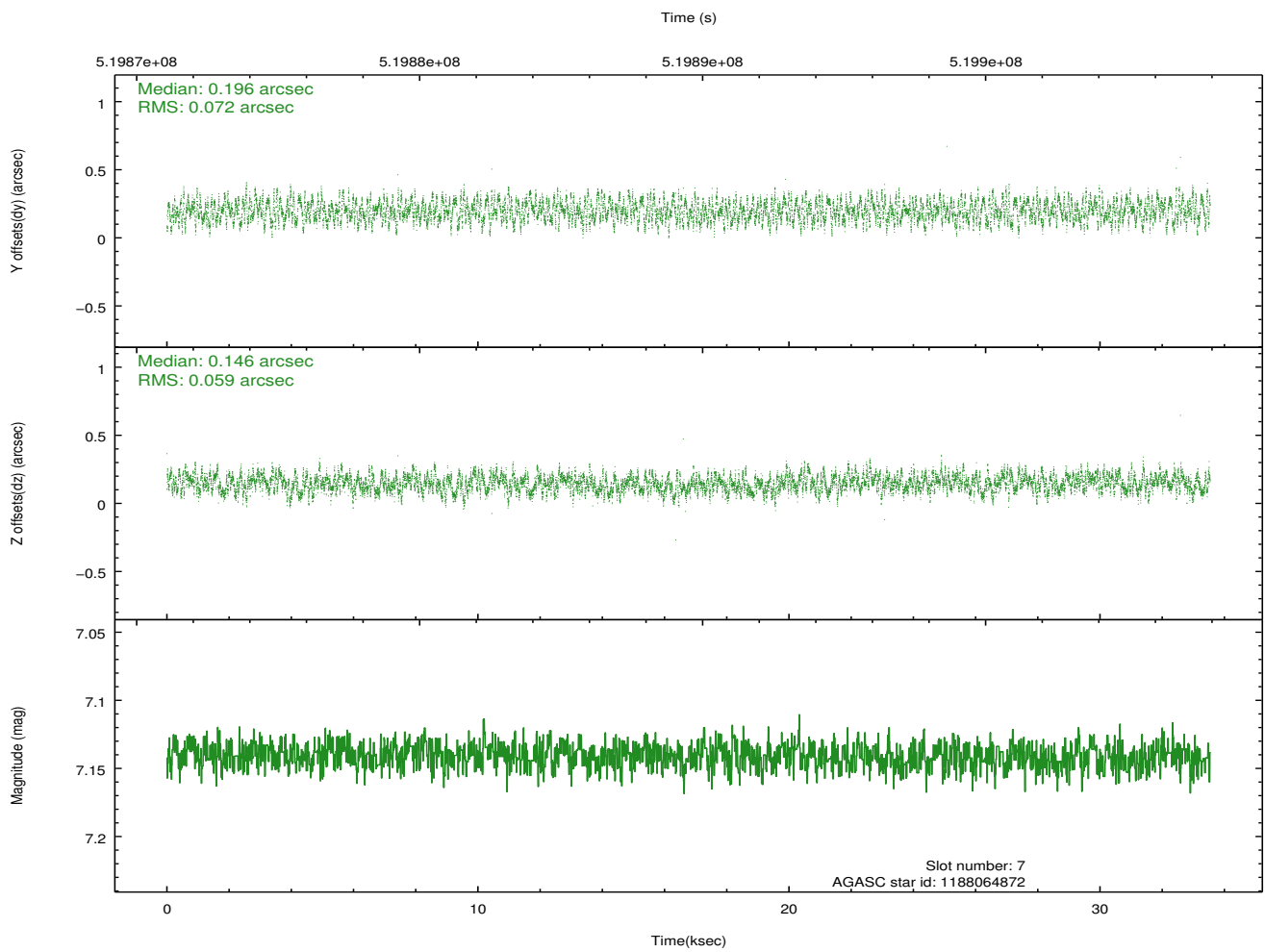
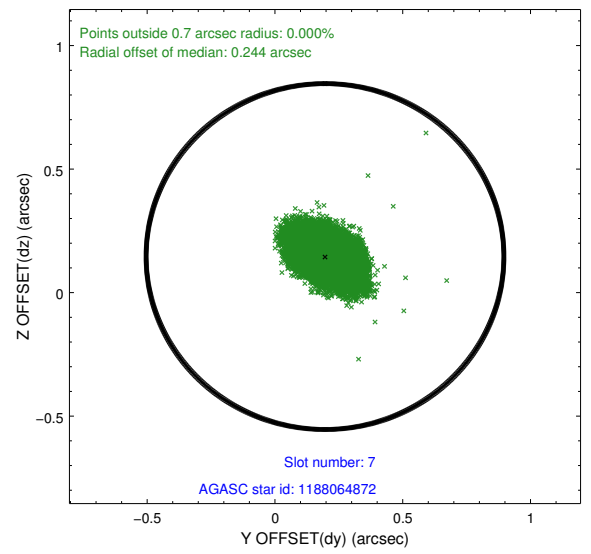
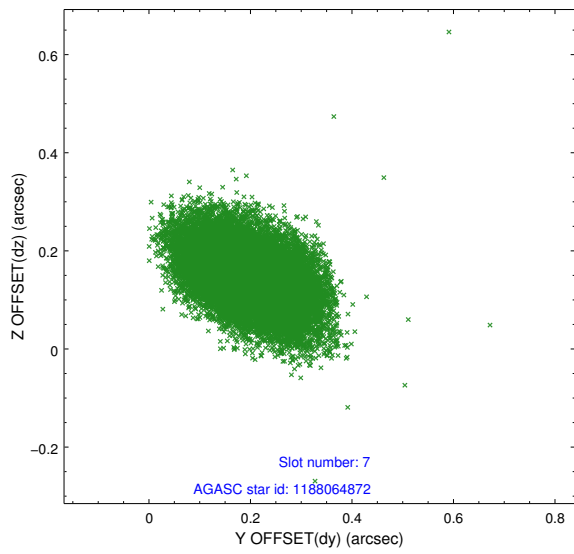
2.4.3 Slot 5



2.4.4 Slot 6

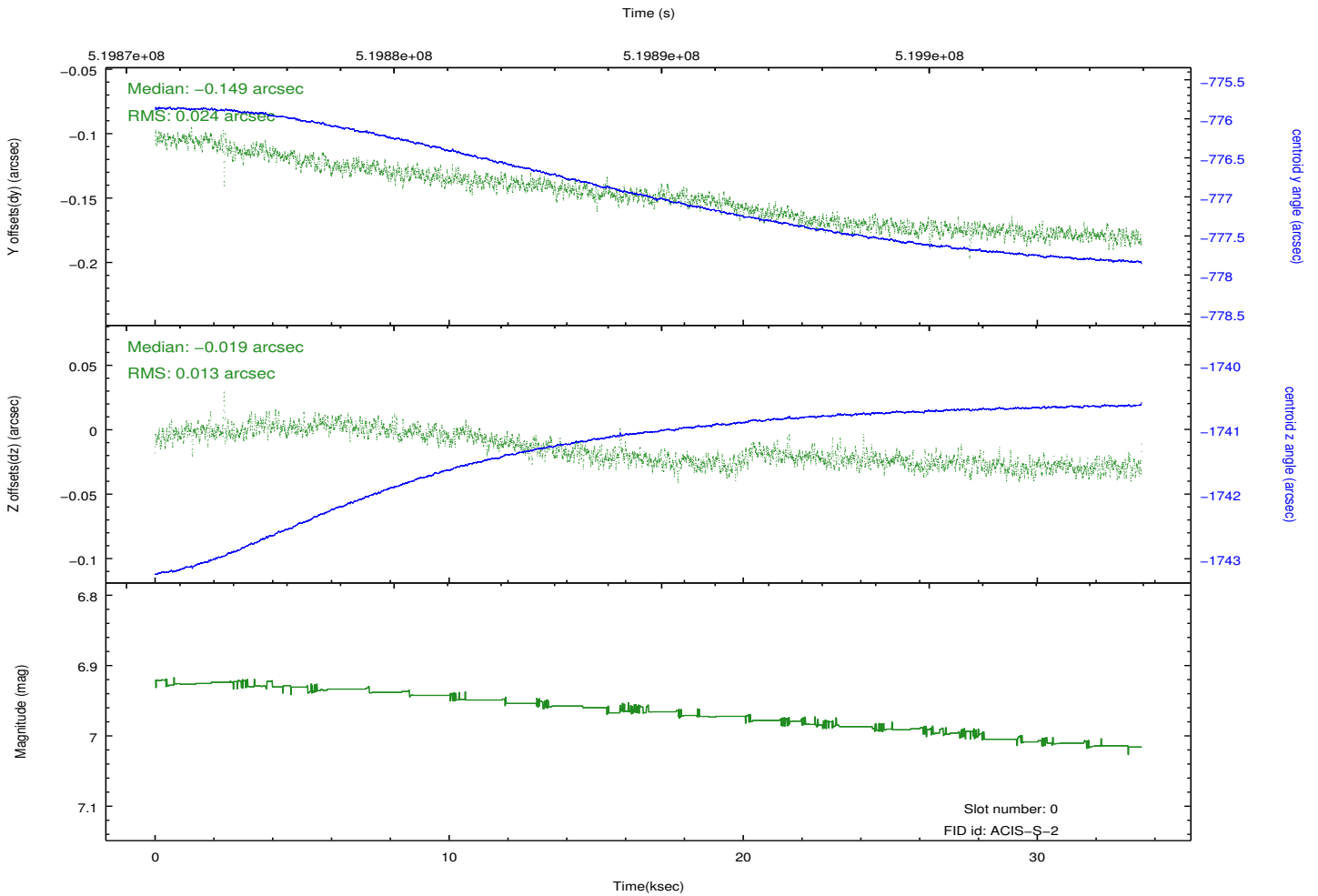
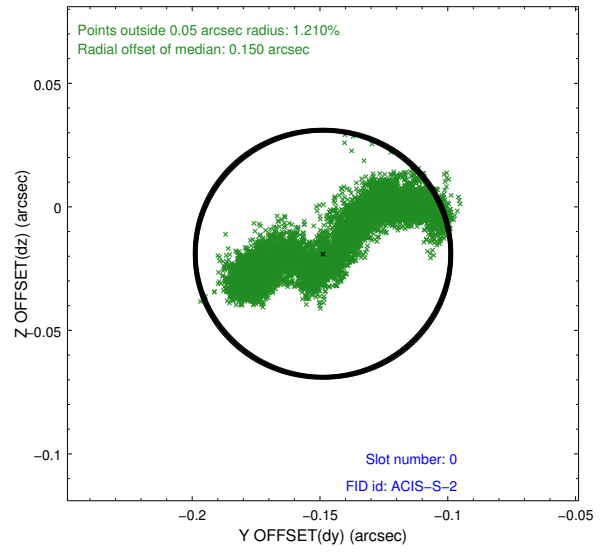
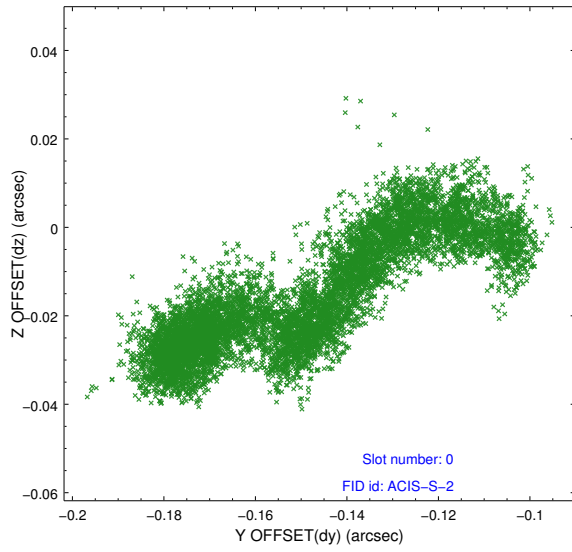


2.4.5 Slot 7

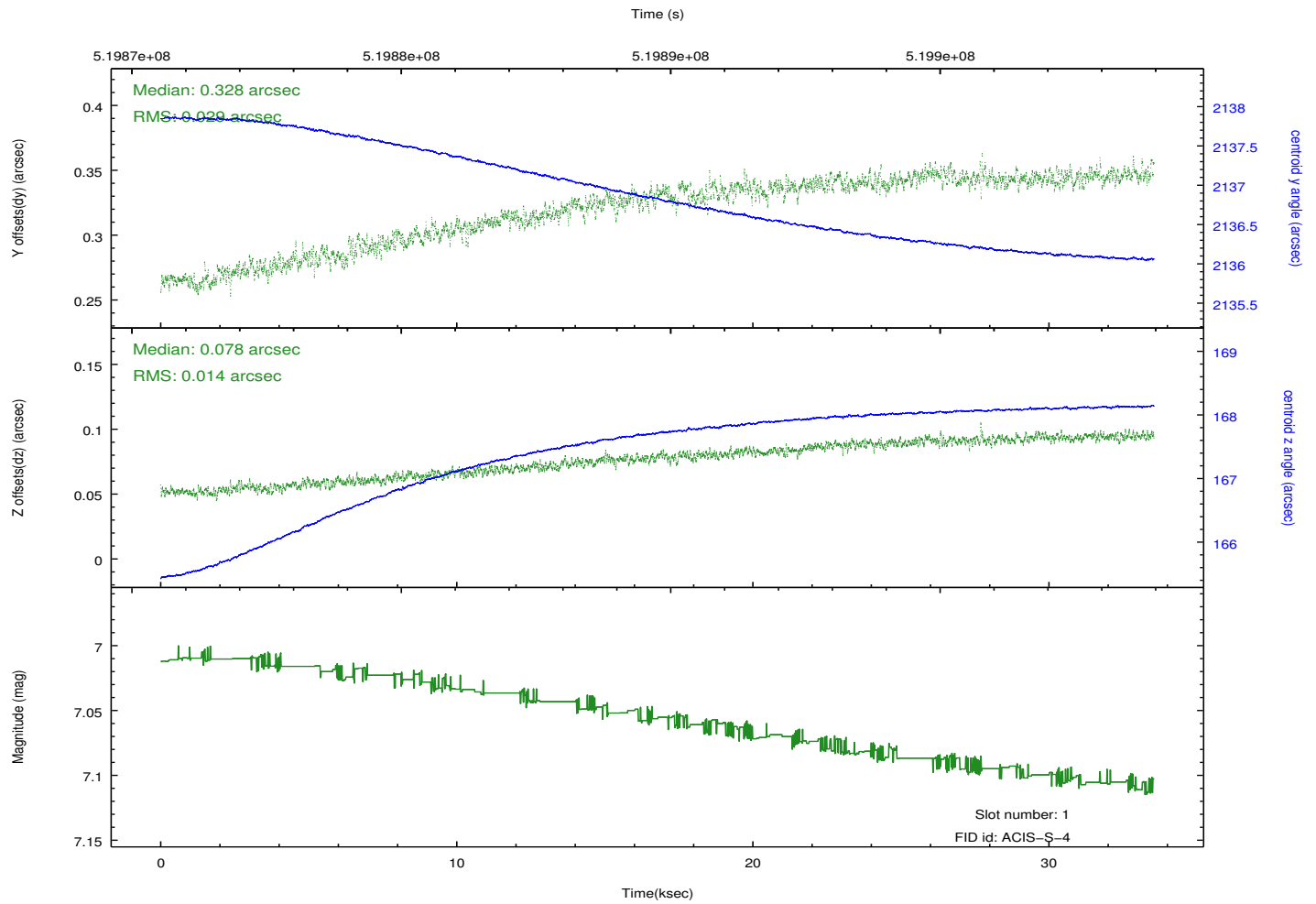
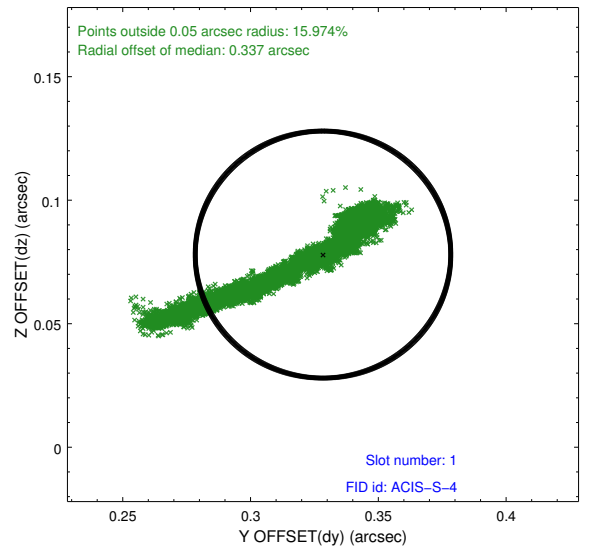
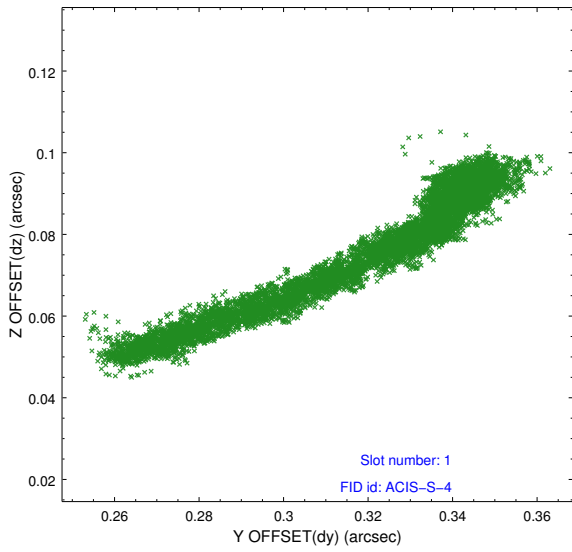


2.5 FID Slots

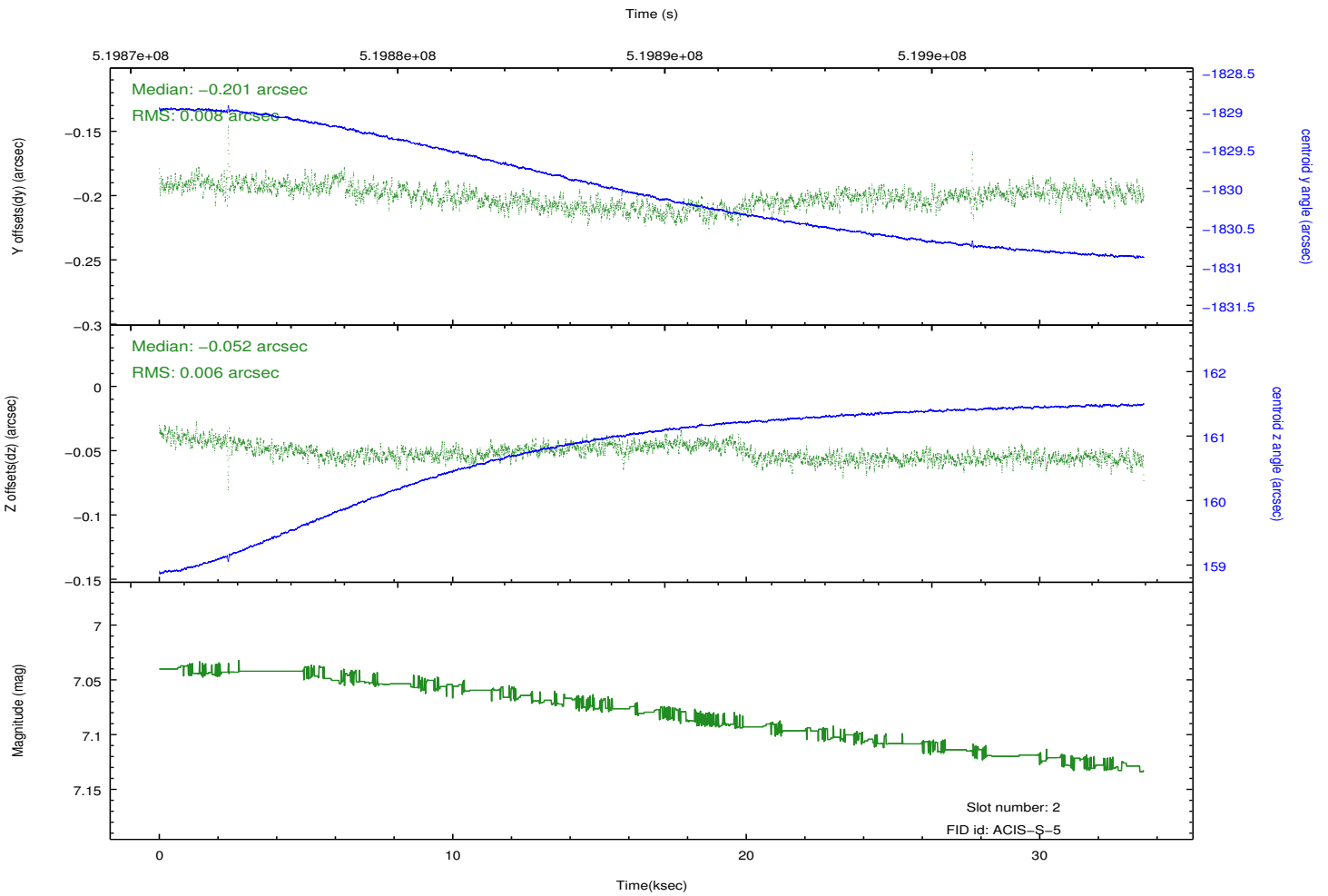
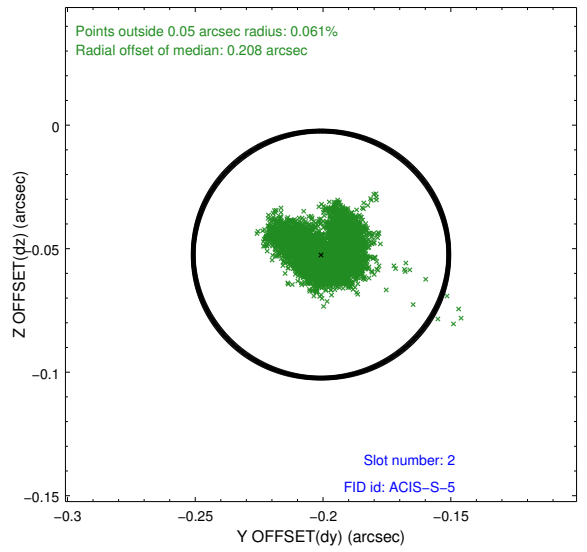
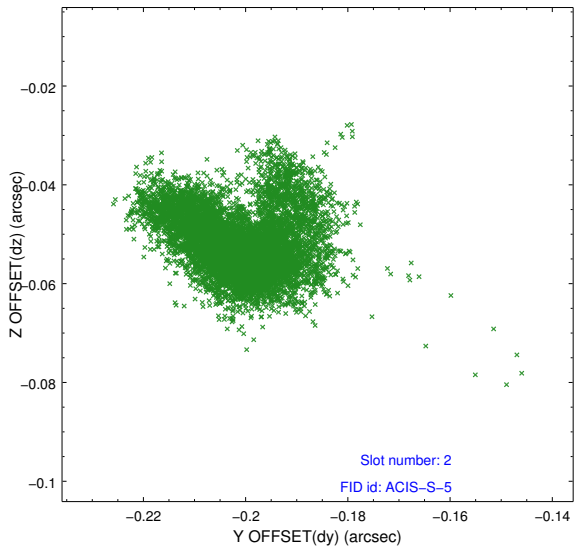
2.5.1 Slot 0



2.5.2 Slot 1



2.5.3 Slot 2



A Summary

A.1 Status

V&V Scientist	Beth Sundheim
V&V Date (YYYY-MM-DD)	2014.12.19
V&V Edition	1
V&V Disposition and Status	OK
V&V Charge Time	33.473467817605

A.2 Comments

These data have been reprocessed with new aspect alignment calibration files that correct small mean offsets (up to 0.4 arcsecs) and improve overall astrometric accuracy. The new calibration was determined using data from the time period being reprocessed and was performed using cross-correlation of X-ray sources with radio and optical counterparts.