

V&V Reference Report

L2 ASCDS Version : 10.3.3

Observation 17193 - L2 Version 1
Chandra X-Ray Center

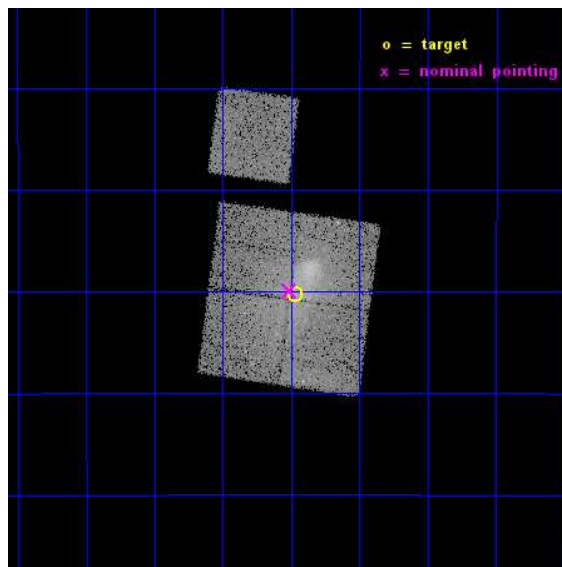
L2 Processing Date : Jan 22 2015

Contents

1	Front	2
2	OBI	3
2.1	OBI	3
2.1.1	Images	3
2.1.2	Bias	3
2.1.3	Parameters	4
2.1.4	Events	4
2.2	Compared Parameters	5
2.3	Aspect	6
2.4	Star Slots	9
2.4.1	Slot 3	9
2.4.2	Slot 4	10
2.4.3	Slot 5	11
2.4.4	Slot 6	12
2.4.5	Slot 7	13
2.5	FID Slots	14
2.5.1	Slot 0	14
2.5.2	Slot 1	15
2.5.3	Slot 2	16
A	Summary	17
A.1	Status	17
A.2	Comments	17

1 Front

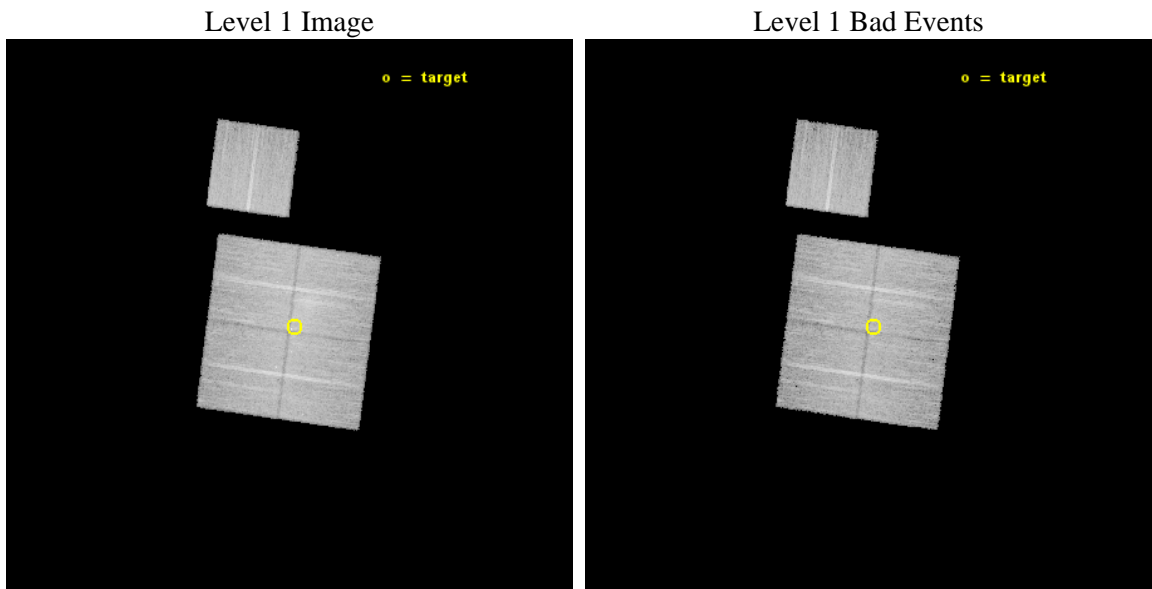
seq_num	801476	Sequence number
obs_id	17193	Observation id
title	Abell 3411: Confronting the Relic Shock Acceleration Mystery	Propo
observer	Dr Reinout van Weeren	Principal investigator
object	Abell 3411	Source name
dtcycle	0	
cycle	P	events from which exps? Prim/Second/Both
ra_targ	130.49375	Observer's specified target RA [deg]
dec_targ	-17.503472	Observer's specified target Dec [deg]
ra_nom	130.50312601451	Nominal RA [deg]
dec_nom	-17.498929819707	Nominal Dec [deg]
roll_nom	7.7115088193393	Nominal Roll [deg]
revision	1	Processing version of data
ontime	22267.300171375	Sum of GTIs [s]
livetime	21976.361501688	Livetime [s]
ontime0	22264.159171104	Sum of GTIs [s]
ontime1	22267.300171375	Sum of GTIs [s]
ontime2	22264.159171104	Sum of GTIs [s]
ontime3	22267.300171375	Sum of GTIs [s]
ontime6	22267.300171375	Sum of GTIs [s]
l2events	74282	Number of level 2 events



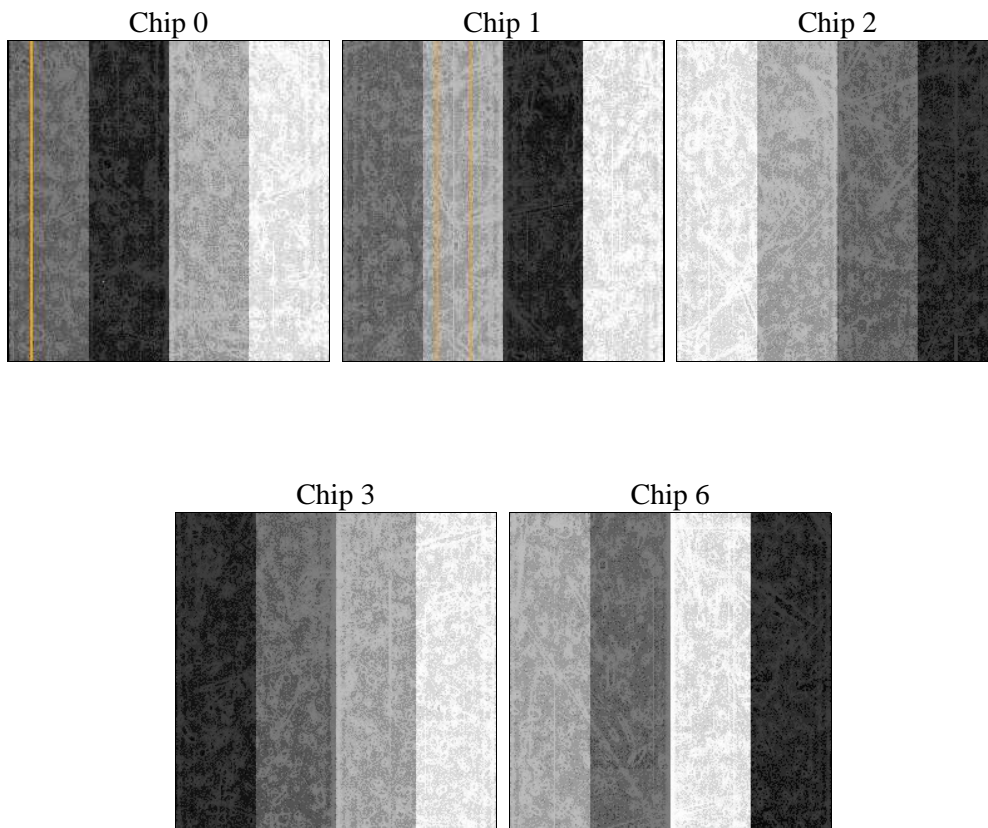
2 OBI

2.1 OBI

2.1.1 Images



2.1.2 Bias



2.1.3 Parameters

obi_num	0	Obi number	sched_exp_time	22188.436000	[s] Scheduled observation exposure time
ascdsver	10.3.3	Processing system revision	ontime	22267.300171375	Sum of GTIs [s]
caldbver	4.6.6	 	ontime0	22264.159171104	Sum of GTIs [s]
date	2015-01-23T02:28:09	Date and time of file creation	ontime1	22267.300171375	Sum of GTIs [s]
revision	1	Processing version of data	ontime2	22264.159171104	Sum of GTIs [s]
			ontime3	22267.300171375	Sum of GTIs [s]
			ontime6	22267.300171375	Sum of GTIs [s]
			l1events	553338	Number of level 1 events

2.1.4 Events

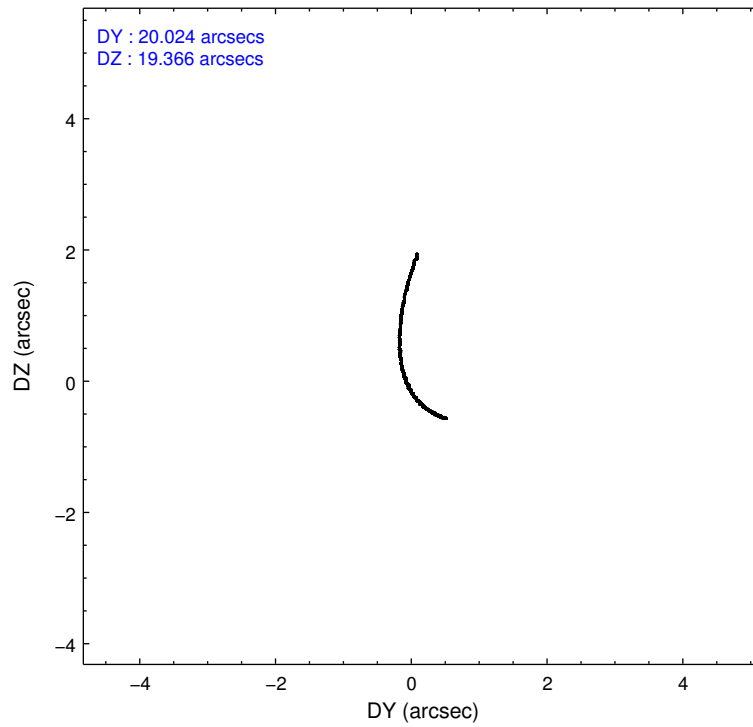
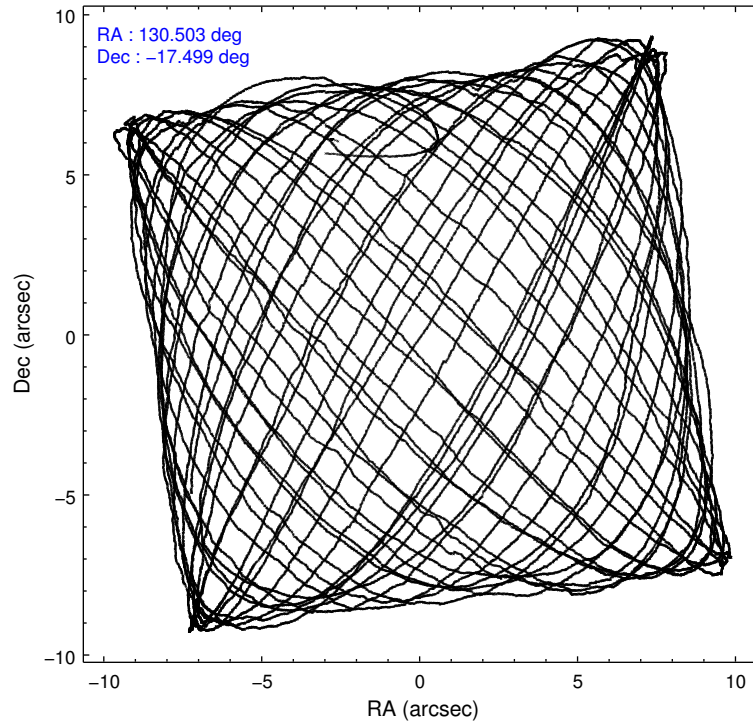
	ccd 0	ccd 1	ccd 2	ccd 3	ccd 6
level 1 events	102645	106295	113768	119903	110727
rejected events	86471	88565	97967	97395	97699
rejected %	84%	83%	86%	81%	88%

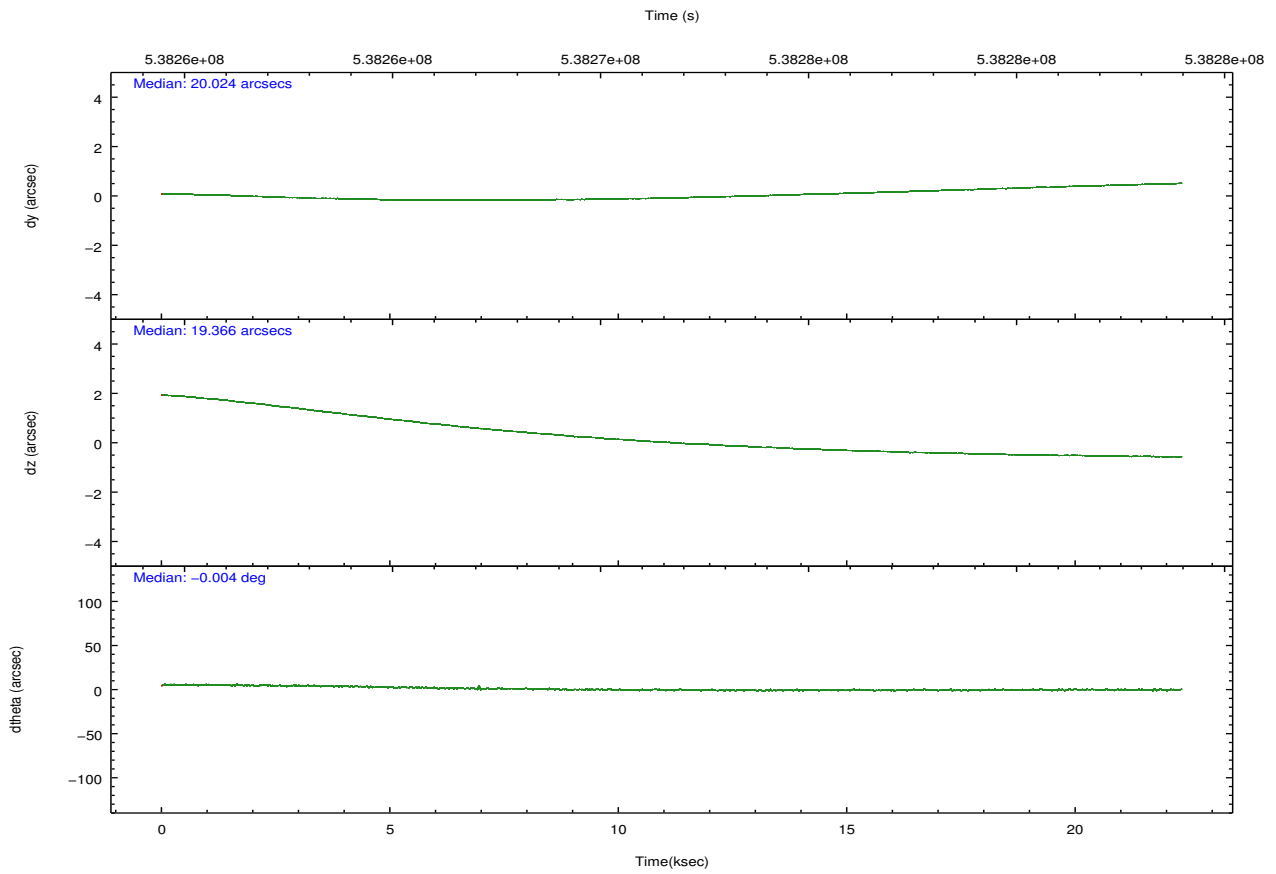
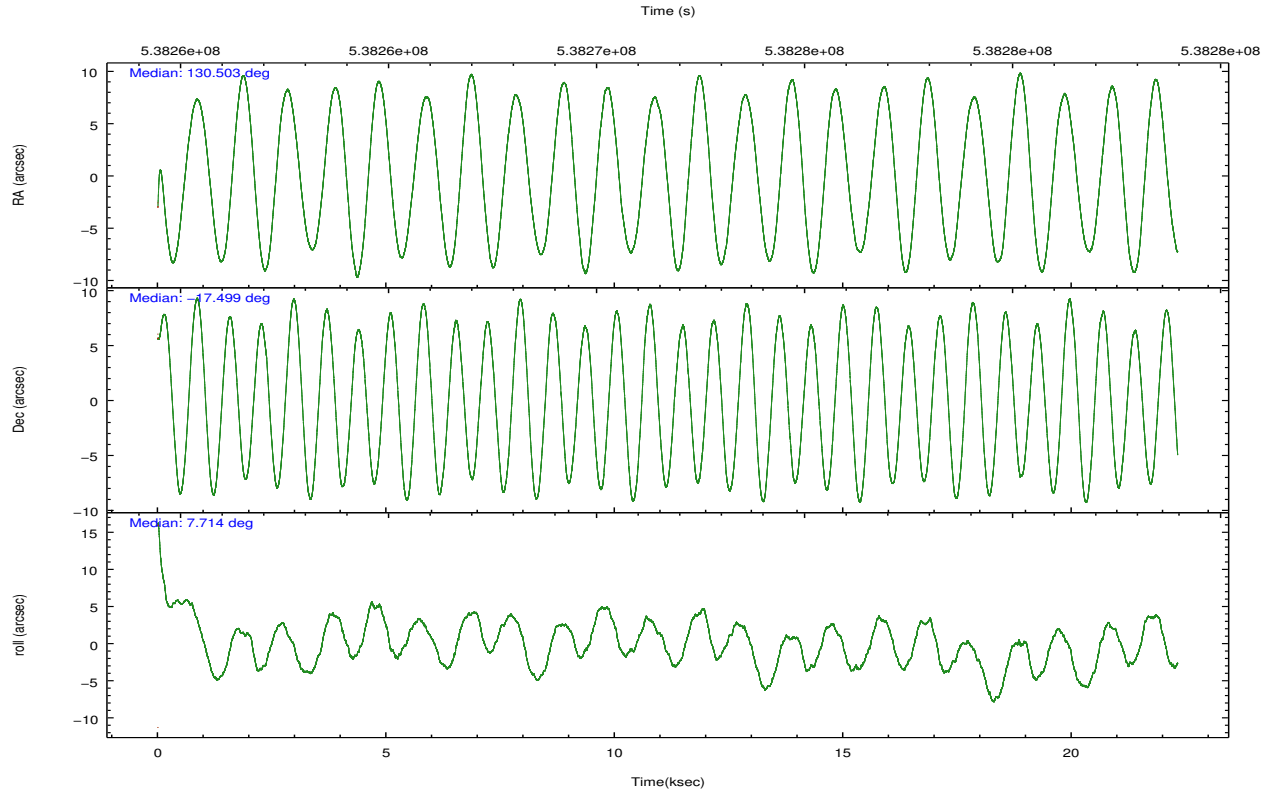
	ccd 0	ccd 1	ccd 2	ccd 3	ccd 6
grade 0 events	6961	7710	7137	12627	4362
	6%	7%	6%	10%	3%
grade 1 events	64	78	78	101	47
	0%	0%	0%	0%	0%
grade 2 events	3532	3753	3444	3882	2868
	3%	3%	3%	3%	2%
grade 3 events	1485	1436	1361	1610	1380
	1%	1%	1%	1%	1%
grade 4 events	1403	1508	1375	1613	1413
	1%	1%	1%	1%	1%
grade 5 events	5192	5418	4834	5908	5729
	5%	5%	4%	4%	5%
grade 6 events	2804	3325	2496	2779	3008
	2%	3%	2%	2%	2%
grade 7 events	81204	83067	93043	91383	91920
	79%	78%	81%	76%	83%

2.2 Compared Parameters

Parameter	Planned	Actual	Parameter	Planned	Actual
Instrument	ACIS	ACIS	Obspar format version number	7	7
Detector	ACIS-01236	ACIS-01236	Obspar file type	PREDICTED	ACTUAL
Grating	NONE	NONE	Obspar update status	NONE	UPDATED
Data mode	VFAINT	VFAINT	CCD I0 on	Y	Y
Observation mode	POINTING	POINTING	CCD I1 on	Y	Y
[deg] Pointing RA	130.480314	130.5031260145108	CCD I2 on	Y	Y
[deg] Pointing Dec	-17.515915	-17.49892981970728	CCD I3 on	Y	Y
[deg] Pointing Roll	7.495957	7.711508819339284	CCD S0 on	N	N
[mm] SIM focus pos	-0.782348	-0.7809083437167272	CCD S1 on	N	N
[mm] SIM defocus	0	0.001439871863259334	CCD S2 on	O2	Y
[mm] SIM translation stage pos	-233.592463	-233.5874344608287	CCD S3 on	O1	N
[mm] SIM translation stage offset	0	-0.005018542100998502	CCD S4 on	N	N
[s] Observation start time (MET)	538260689.184000	538259460.7400301	CCD S5 on	N	N
Observation start date	2015-01-21T20:50:22	2015-01-21T20:31:00	Number of optional ACIS chips dropped	1	1
[s] Observation end time (MET)	538282877.184000	538283113.64135	On-chip summing requested	N	N
Observation end date	2015-01-22T03:00:10	2015-01-22T03:05:13	Subarray requested	NONE	NONE
Read mode	TIMED	TIMED	Alternating exposures requested	N	N
			[s] Primary exposure time	0.000000	3.1

2.3 Aspect



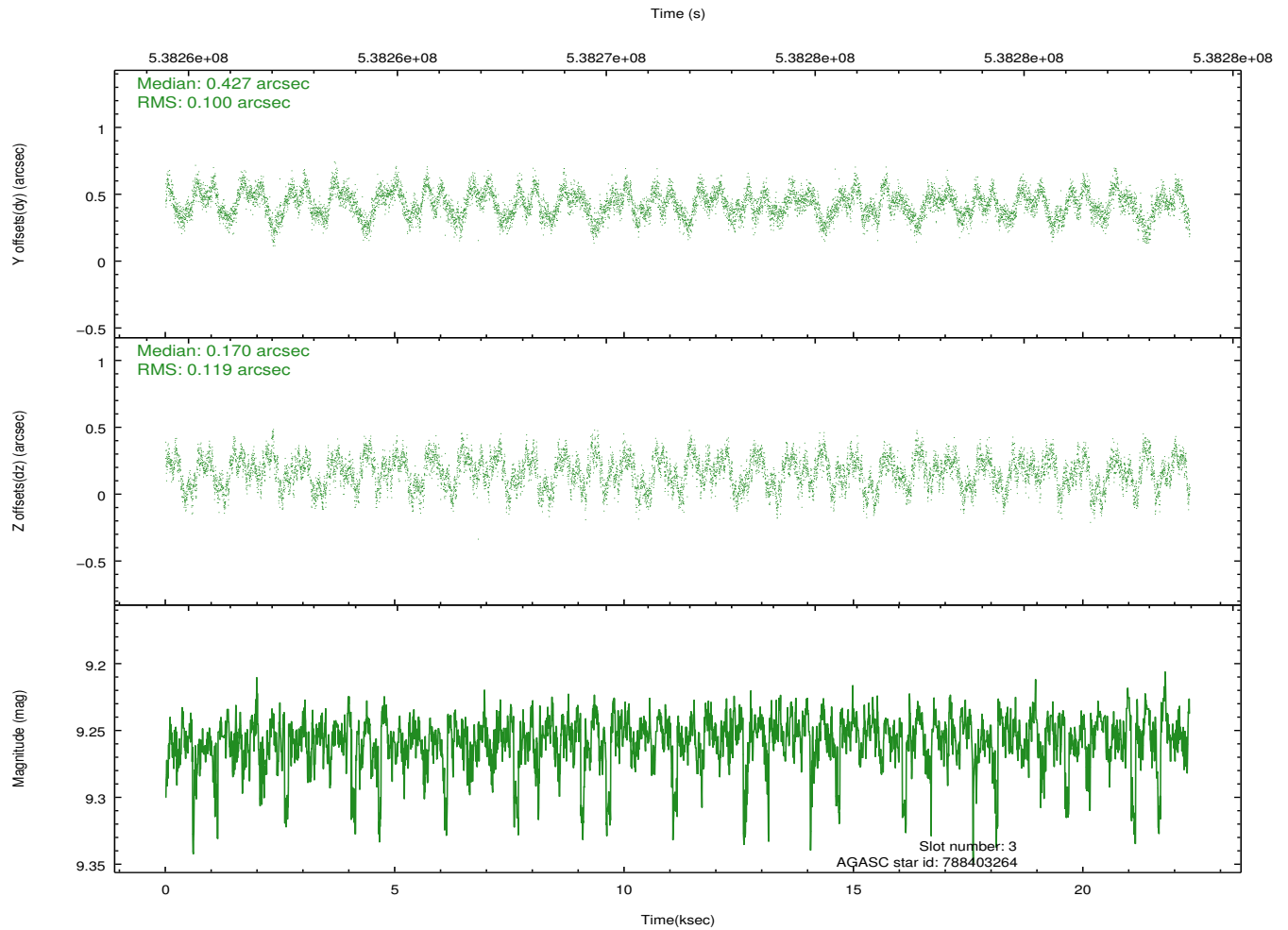
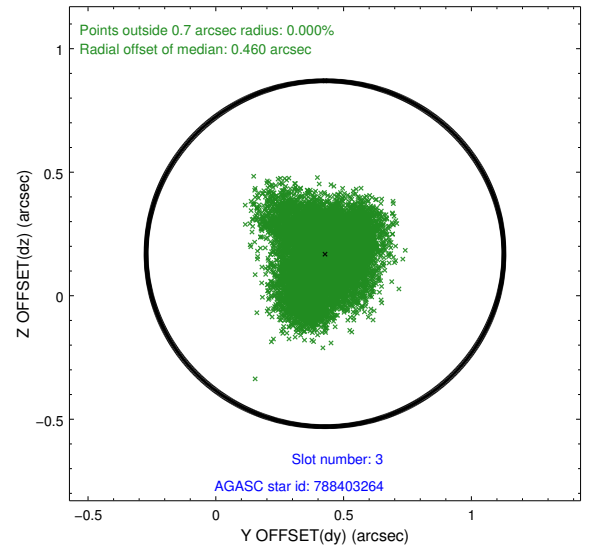
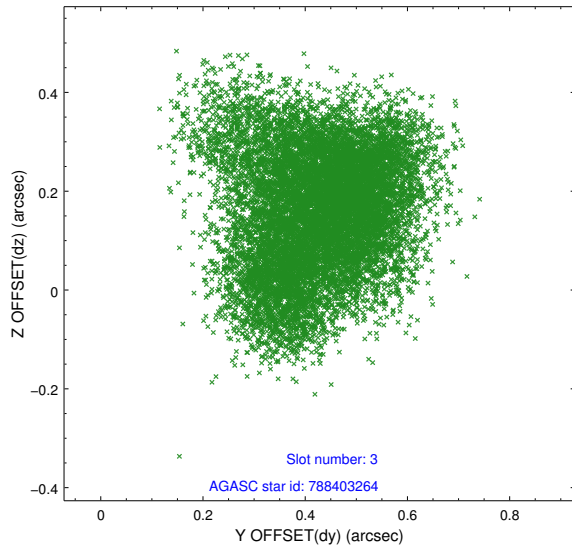


Slot Statistics

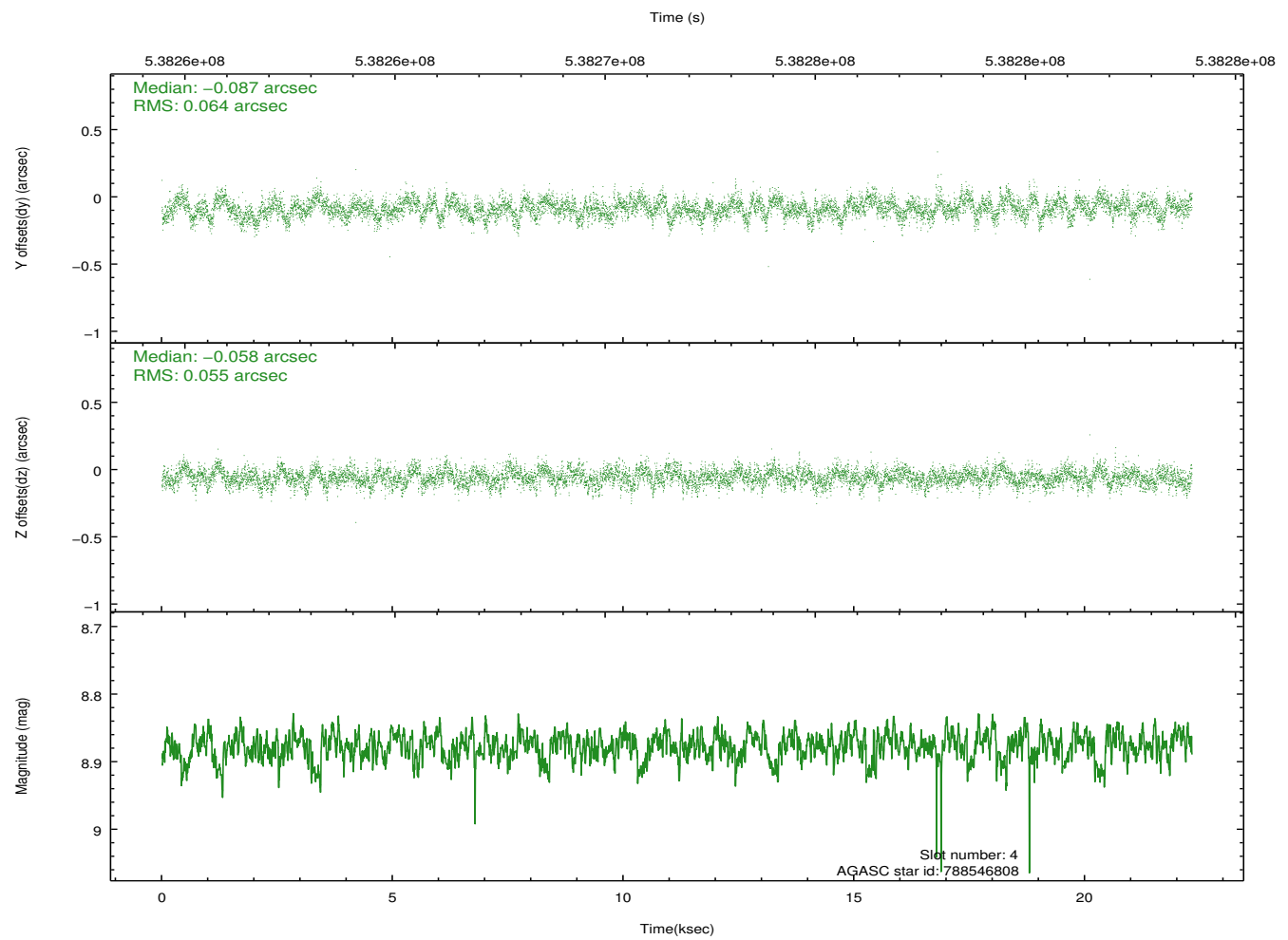
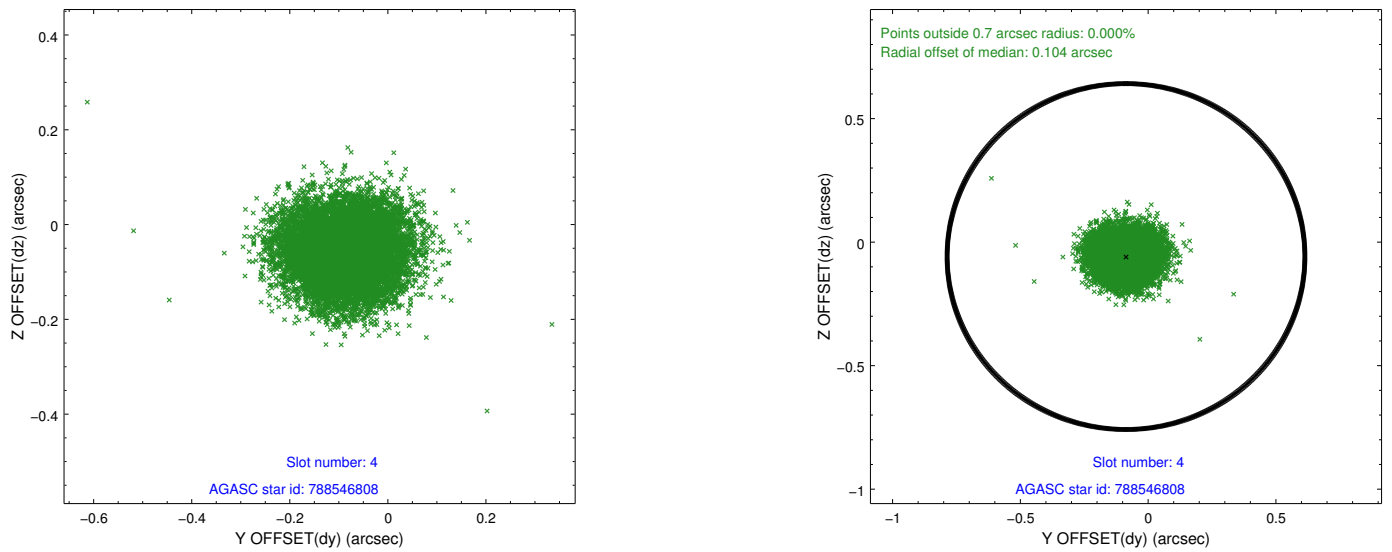
slot	status	used	id	mag	n_pts	med_dy	med_dz	dr1	dr2	ra	dec	mean_y	mean_z
0	FID		ACIS-I-1	7.10	5445	0.038	0.030	0.023	0.074	0.000000	0.000000	919.31	-843.31
1	FID		ACIS-I-5	7.09	5445	-0.294	0.027	0.009	0.025	0.000000	0.000000	-1829.11	1054.03
2	FID		ACIS-I-6	7.10	5445	0.165	0.015	0.022	0.056	0.000000	0.000000	384.72	1698.77
3	GUIDE	used	788403264	9.26	10884	0.427	0.170	0.168	0.264	129.988745	-17.706292	-1760.61	-461.04
4	GUIDE	used	788546808	8.88	10886	-0.087	-0.058	0.090	0.144	131.022424	-17.370468	1914.66	273.53
5	GUIDE	used	788552496	8.76	10886	-0.221	-0.066	0.093	0.152	131.035975	-16.946195	2164.90	1781.28
6	GUIDE	used	788416008	8.77	10887	0.189	0.064	0.117	0.180	129.756864	-17.301734	-2364.68	1084.78
7	GUIDE	used	788552320	8.47	10884	-0.306	-0.104	0.076	0.123	130.958057	-17.020554	1863.20	1549.48

2.4 Star Slots

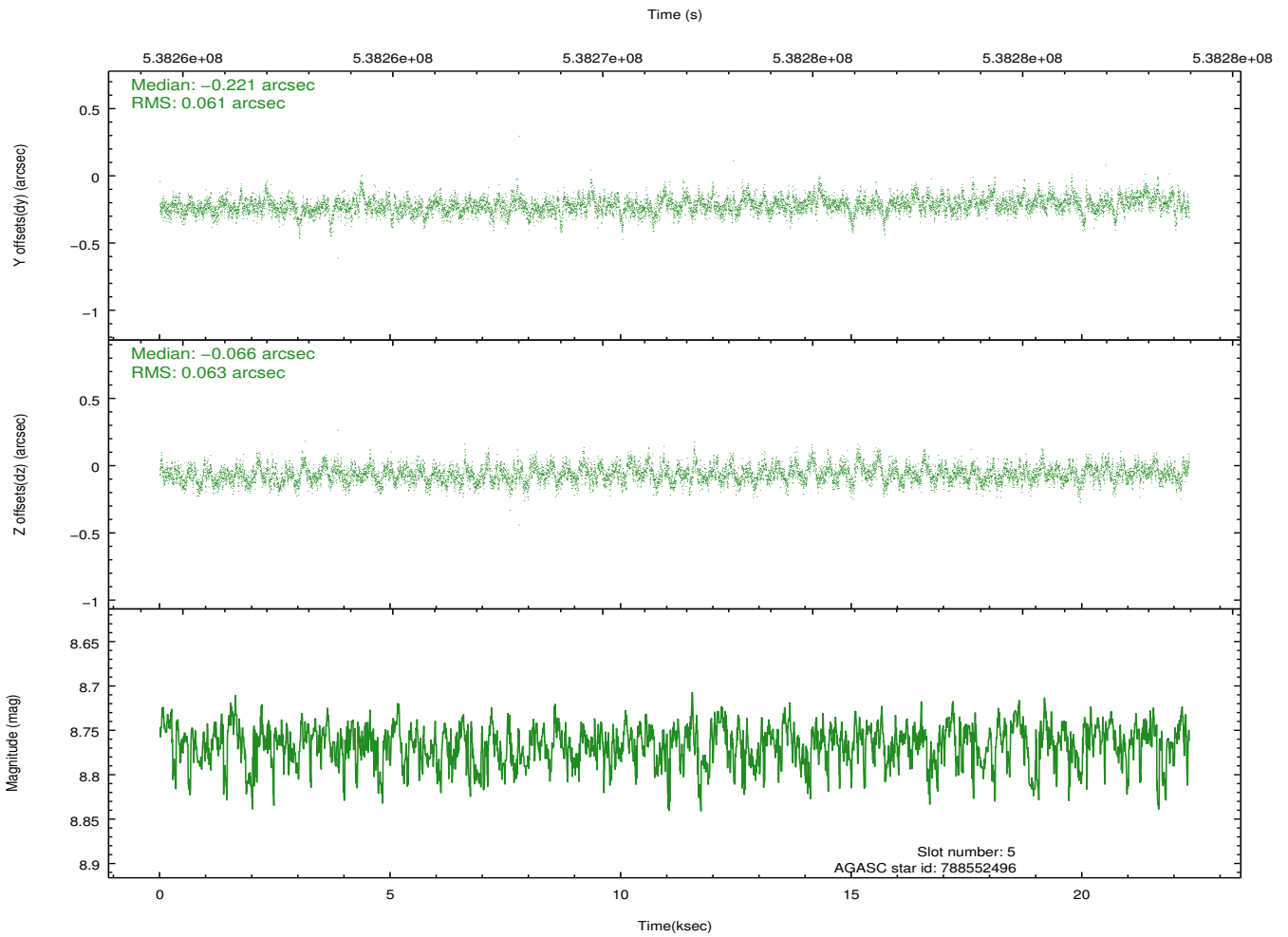
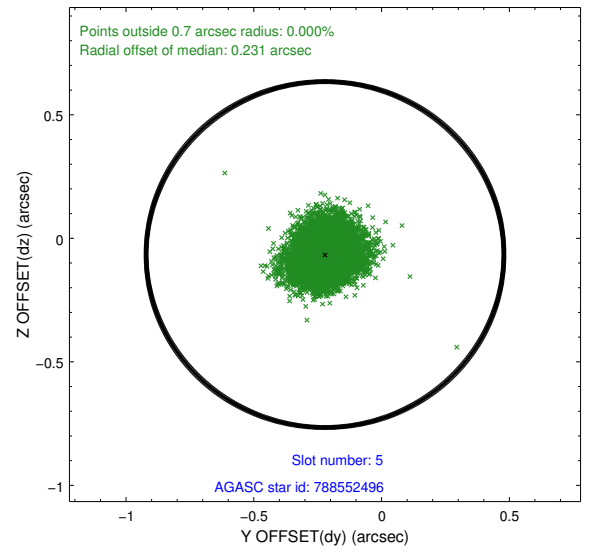
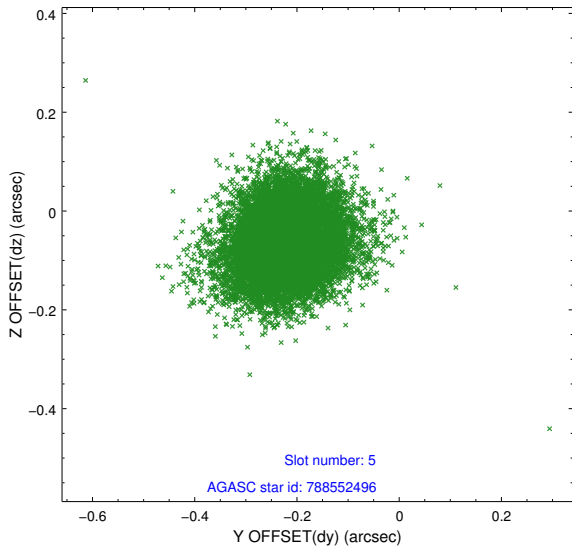
2.4.1 Slot 3



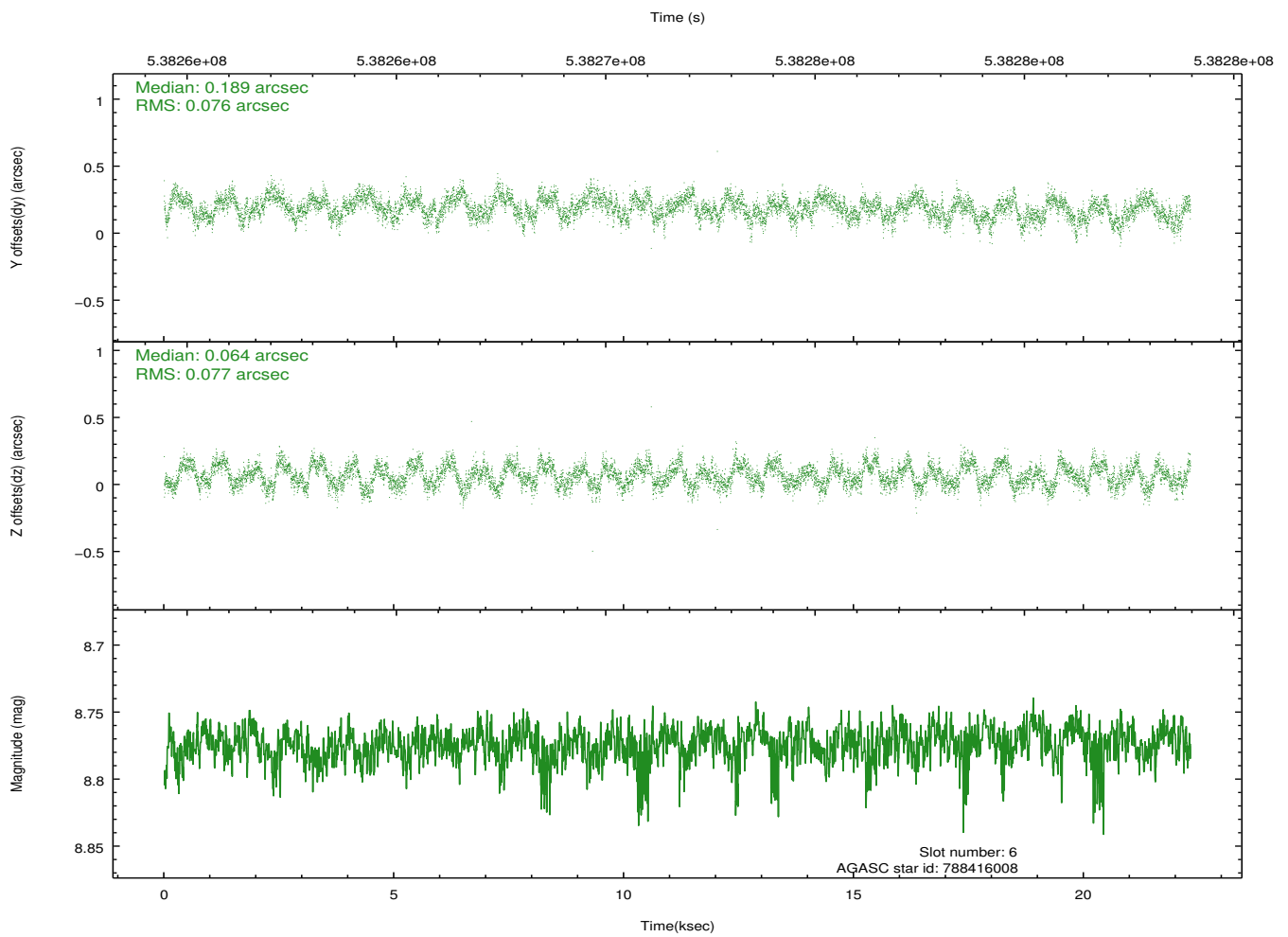
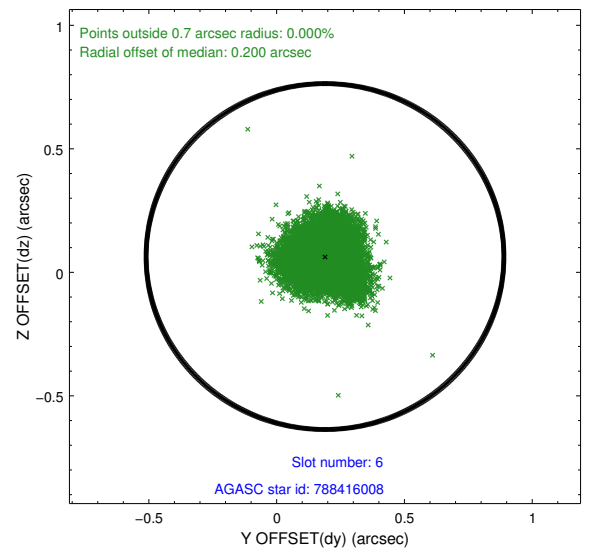
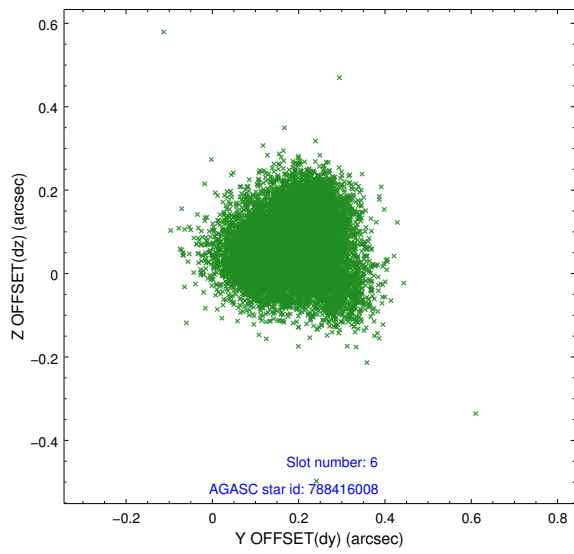
2.4.2 Slot 4



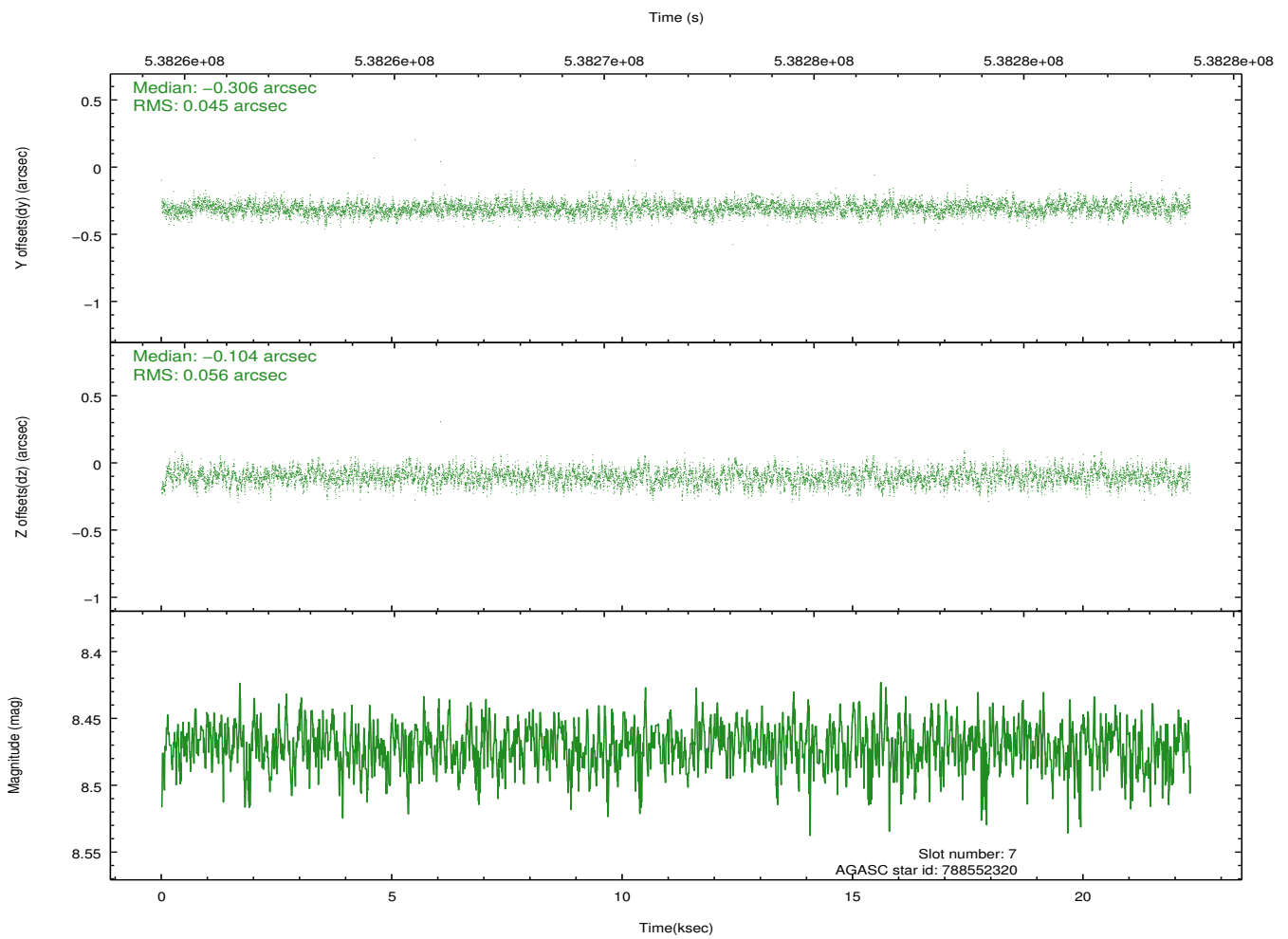
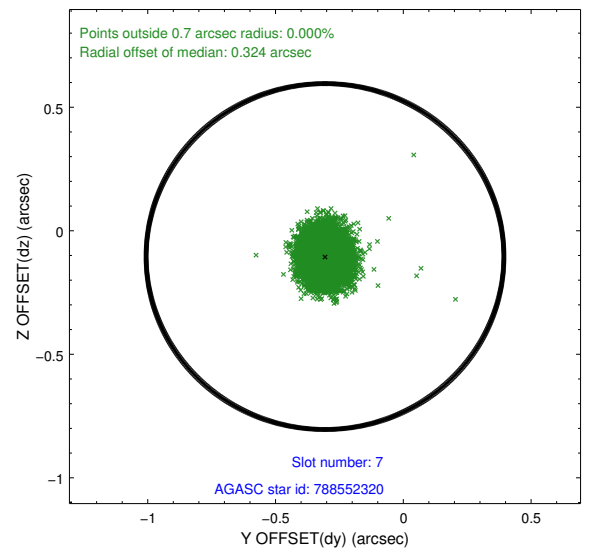
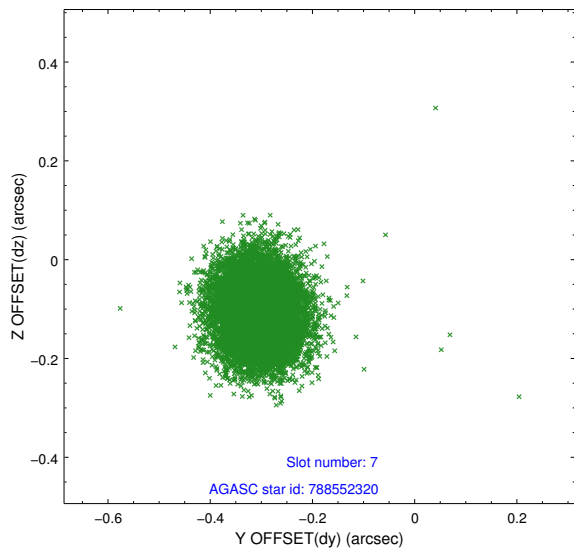
2.4.3 Slot 5



2.4.4 Slot 6

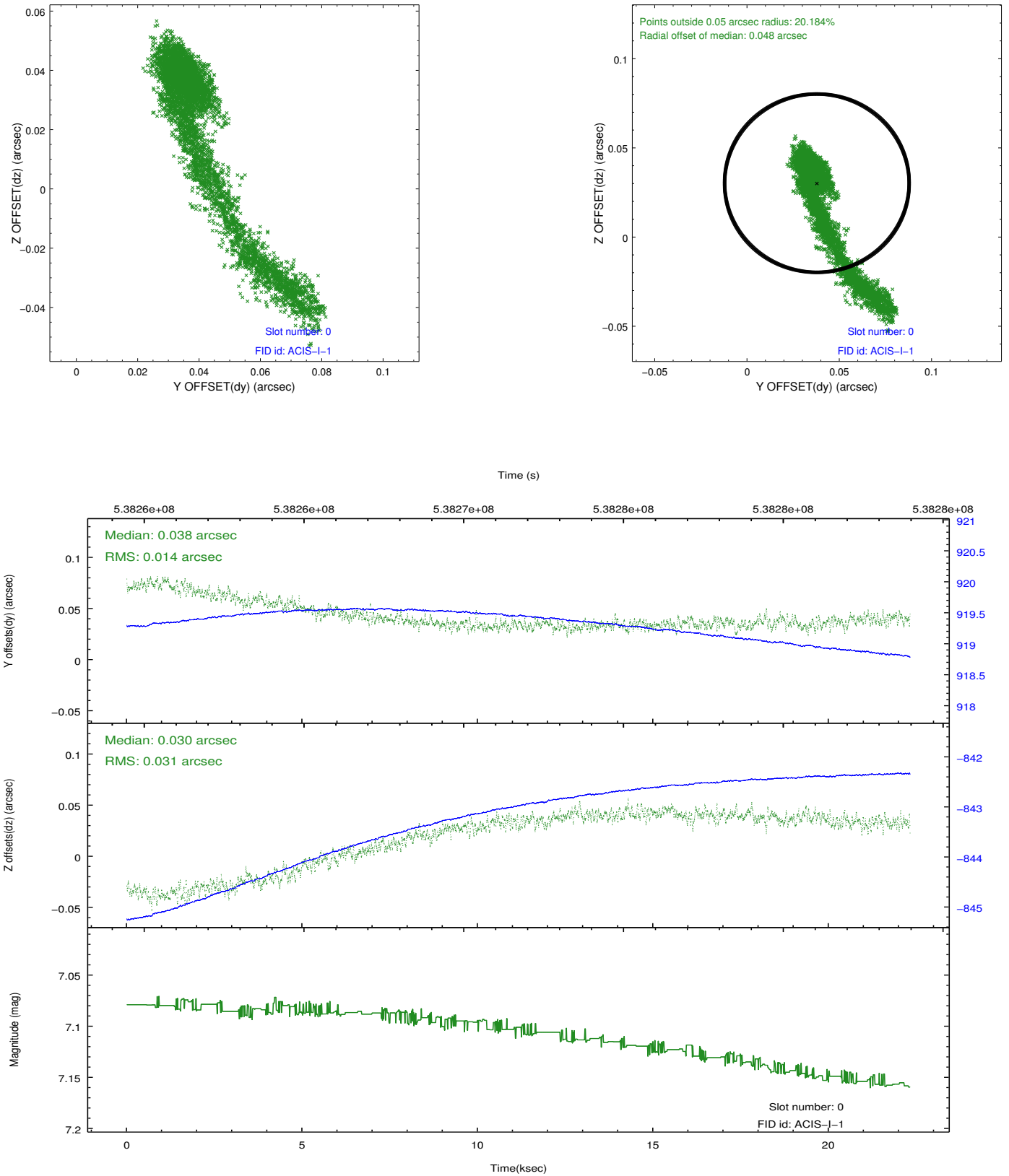


2.4.5 Slot 7

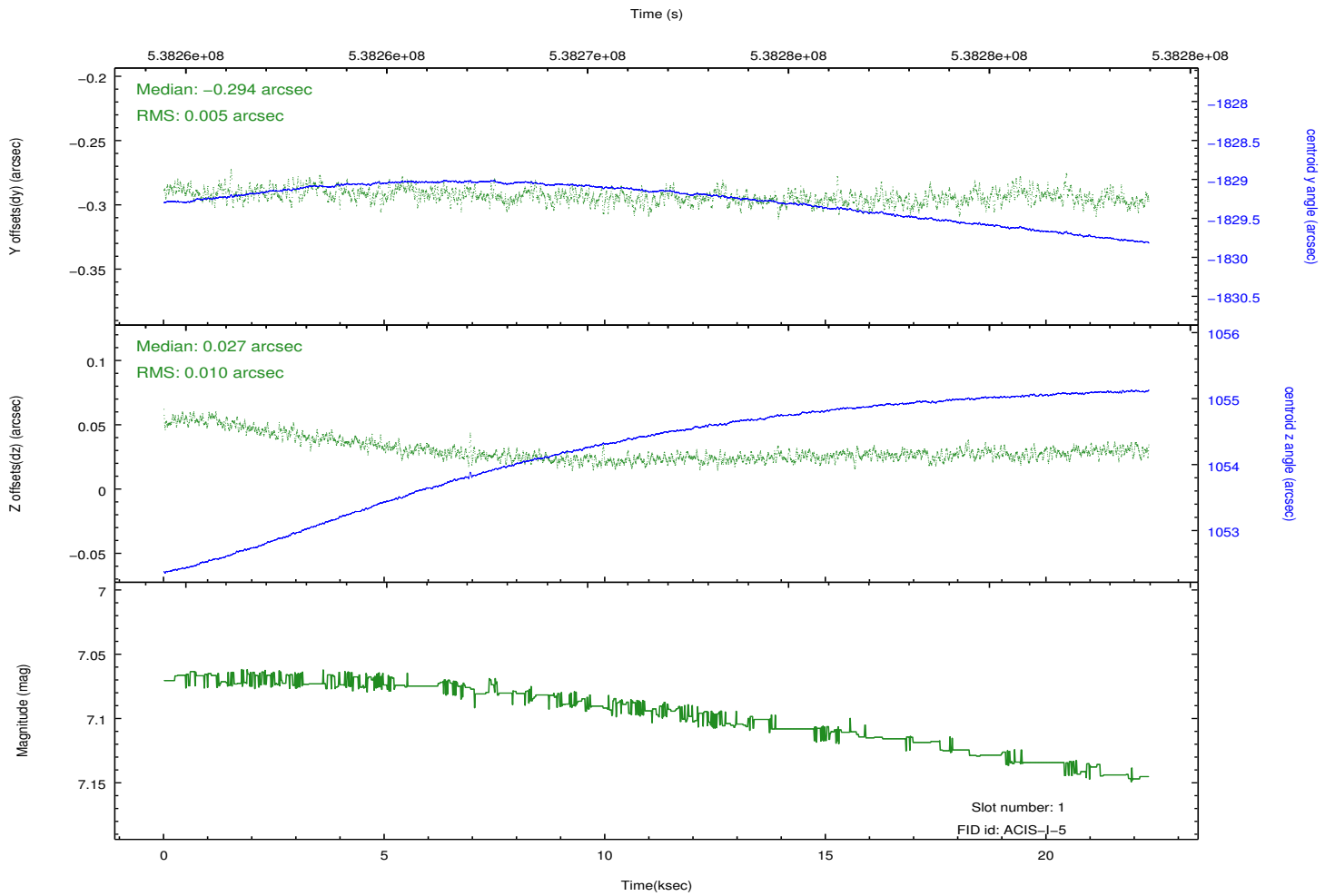
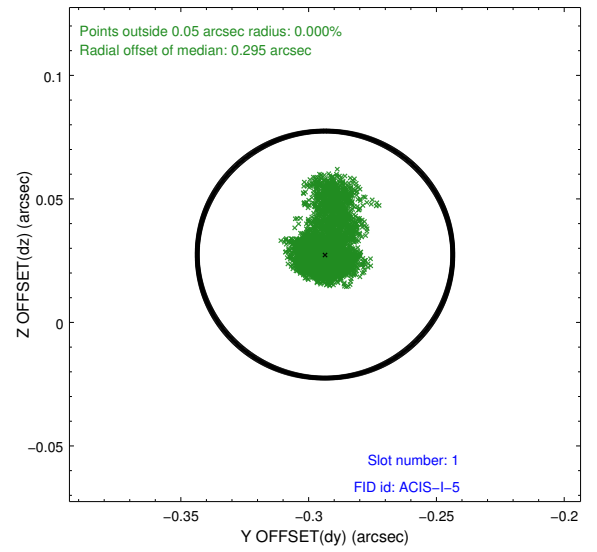
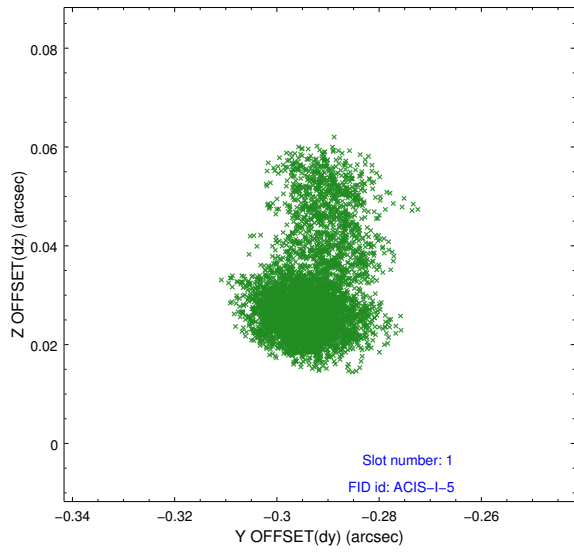


2.5 FID Slots

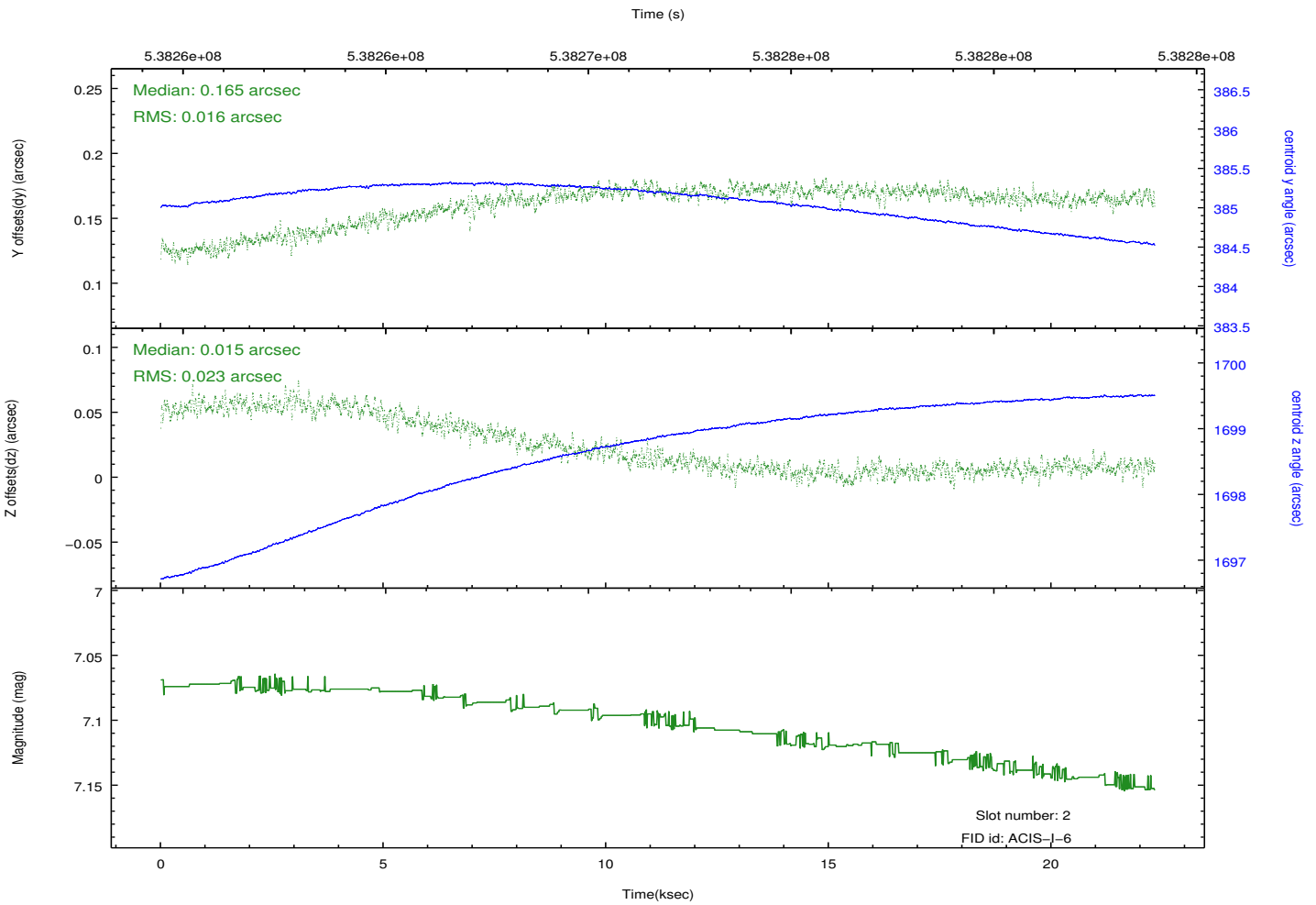
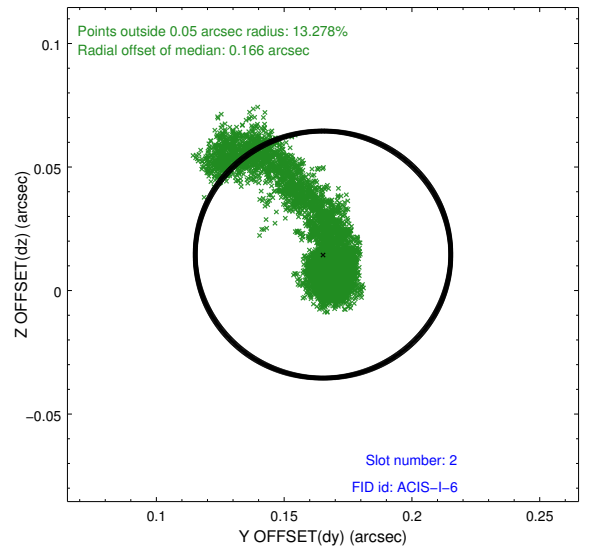
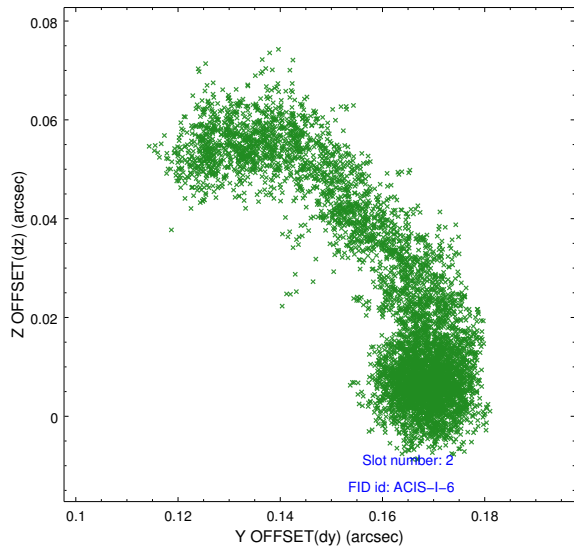
2.5.1 Slot 0



2.5.2 Slot 1



2.5.3 Slot 2



A Summary

A.1 Status

V&V Scientist	Joy Nichols
V&V Date (YYYY-MM-DD)	2015.01.23
V&V Edition	1
V&V Disposition and Status	OK
V&V Charge Time	22.267300171375

A.2 Comments